

# V&V Reference Report

## L2 ASCDS Version : 8.4.5

Observation 4604 - L2 Version 3  
Chandra X-Ray Center

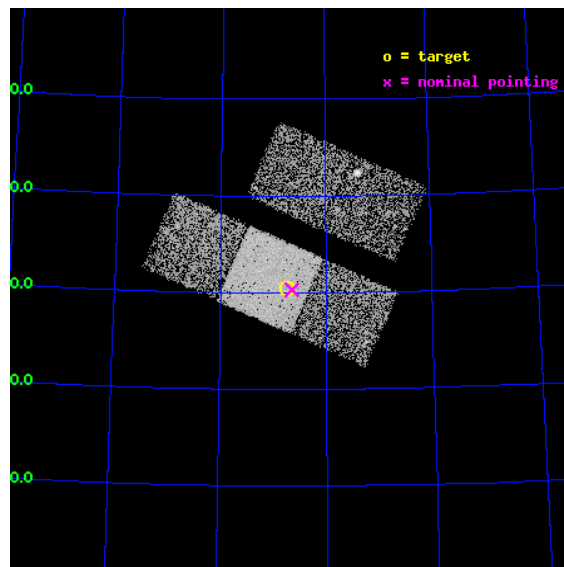
L2 Processing Date : Dec 3 2012

## Contents

<b>1</b>	<b>Front</b>	<b>2</b>
<b>2</b>	<b>OBI</b>	<b>3</b>
2.1	OBI . . . . .	3
2.1.1	Images . . . . .	3
2.1.2	Bias . . . . .	3
2.1.3	Parameters . . . . .	4
2.1.4	Events . . . . .	4
2.2	Compared Parameters . . . . .	5
2.3	Aspect . . . . .	6
2.4	Star Slots . . . . .	9
2.4.1	Slot 3 . . . . .	9
2.4.2	Slot 4 . . . . .	10
2.4.3	Slot 5 . . . . .	11
2.4.4	Slot 6 . . . . .	12
2.4.5	Slot 7 . . . . .	13
2.5	FID Slots . . . . .	14
2.5.1	Slot 0 . . . . .	14
2.5.2	Slot 1 . . . . .	15
2.5.3	Slot 2 . . . . .	16
<b>A</b>	<b>Summary</b>	<b>17</b>
A.1	Status . . . . .	17
A.2	Comments . . . . .	17

# 1 Front

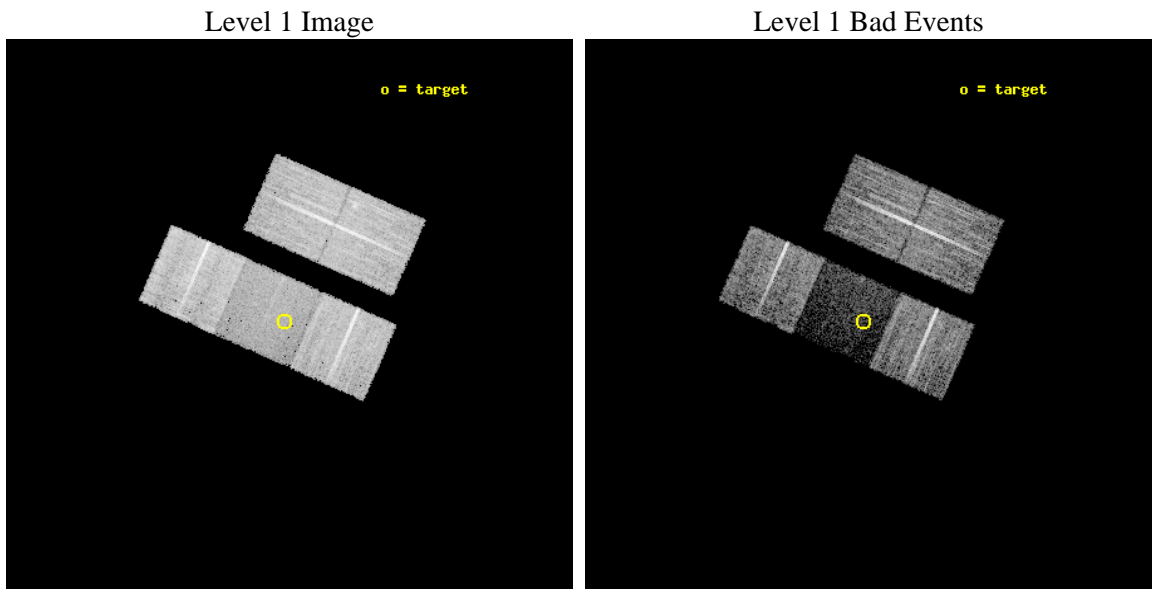
seq_num	500429	Sequence number
obs_id	4604	Observation id
title	Was the X-ray Afterglow of GRB 970815 Detected, or is 3EG J1621+8203 a Pulsar?	Proposal title
observer	Dr Nestor Mirabal	Principal investigator
object	RX J1606.8+8130	Source name
dtcycle	0	&#160
cycle	P	events from which exps? Prim/Second/Both
ra_targ	241.716667	Observer's specified target RA [deg]
dec_targ	81.507778	Observer's specified target Dec [deg]
ra_nom	241.65319782014	Nominal RA [deg]
dec_nom	81.505467233502	Nominal Dec [deg]
roll_nom	203.78880482473	Nominal Roll [deg]
revision	3	Processing version of data
ontime	10130.799980491	Sum of GTIs [s]
livetime	9998.4336205598	Livetime [s]
ontime2	10130.799980491	Sum of GTIs [s]
ontime3	10130.799980491	Sum of GTIs [s]
ontime6	10130.799980491	Sum of GTIs [s]
ontime7	10130.799980491	Sum of GTIs [s]
ontime8	10127.658990294	Sum of GTIs [s]
l2events	32299	Number of level 2 events



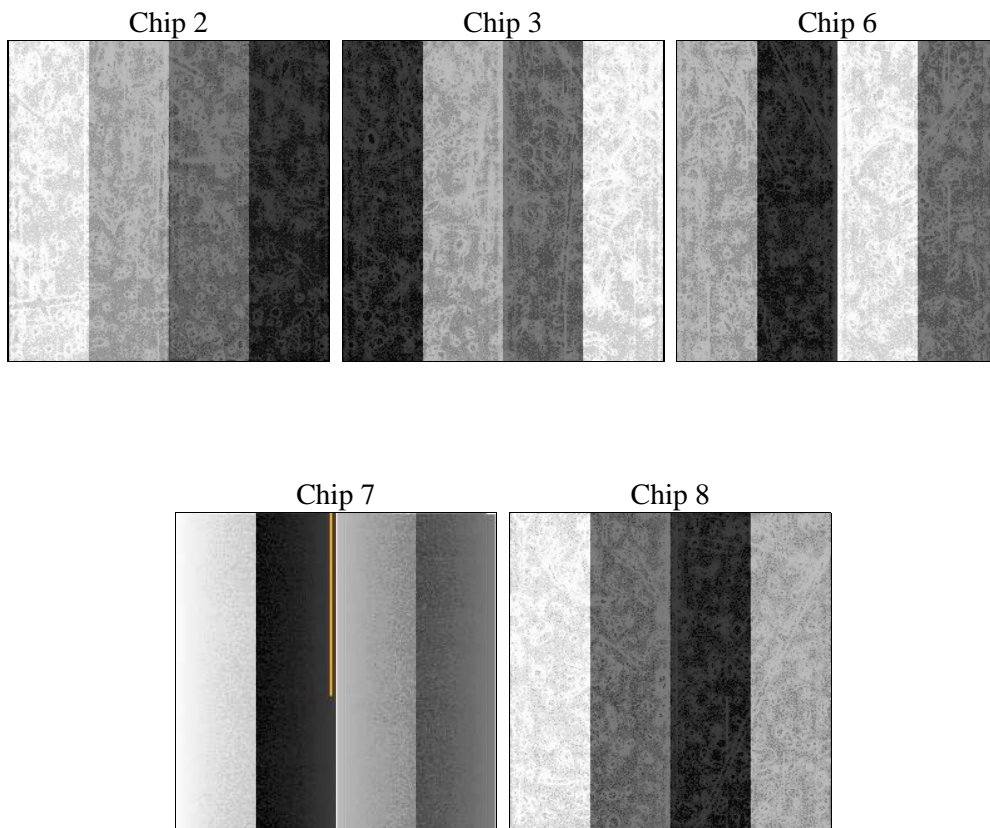
## 2 OBI

### 2.1 OBI

#### 2.1.1 Images



#### 2.1.2 Bias



### 2.1.3 Parameters

obi_num	0	Obi number	sched_exp_time	10000.000000	[s] Scheduled observation exposure time
ascdsver	8.4.5	Processing system revision	ontime	10130.799980491	Sum of GTIs [s]
caldsver	4.5.2	&#160	ontime2	10130.799980491	Sum of GTIs [s]
date	2012-12-03T04:33:00	Date and time of file creation	ontime3	10130.799980491	Sum of GTIs [s]
revision	3	Processing version of data	ontime6	10130.799980491	Sum of GTIs [s]
			ontime7	10130.799980491	Sum of GTIs [s]
			ontime8	10127.658990294	Sum of GTIs [s]
			l1events	298955	Number of level 1 events

### 2.1.4 Events

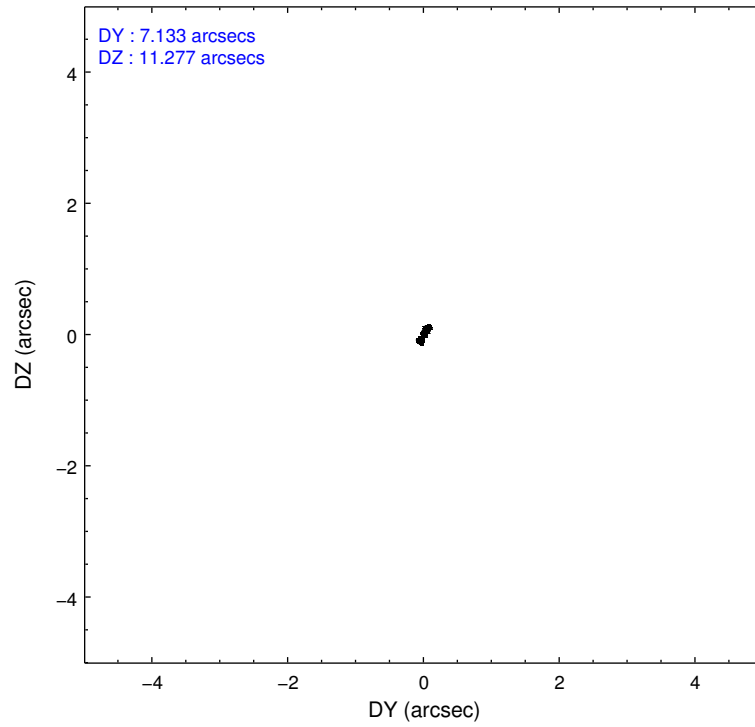
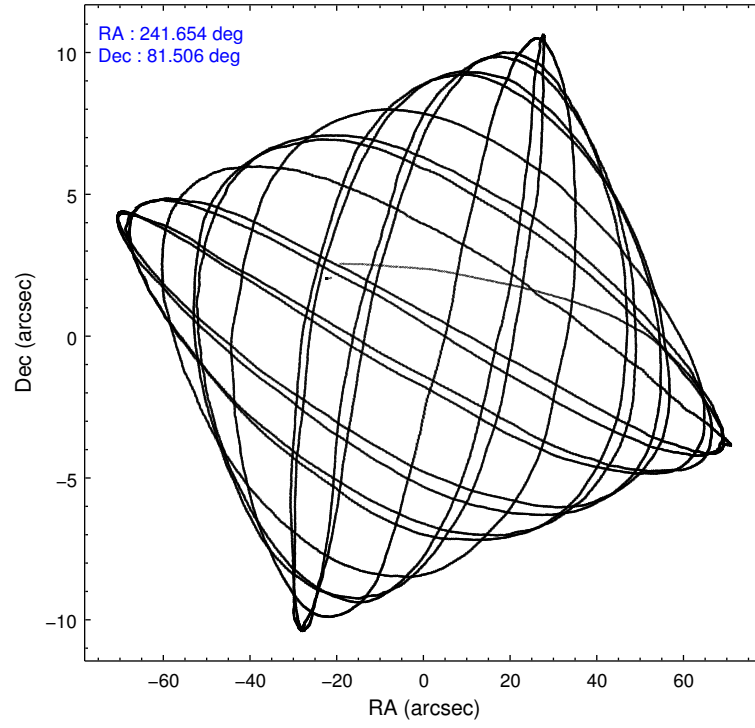
	ccd 2	ccd 3	ccd 6	ccd 7	ccd 8
level 1 events	65540	62283	61892	35766	73474
rejected events	60852	58085	57138	18369	57825
rejected %	92%	93%	92%	51%	78%

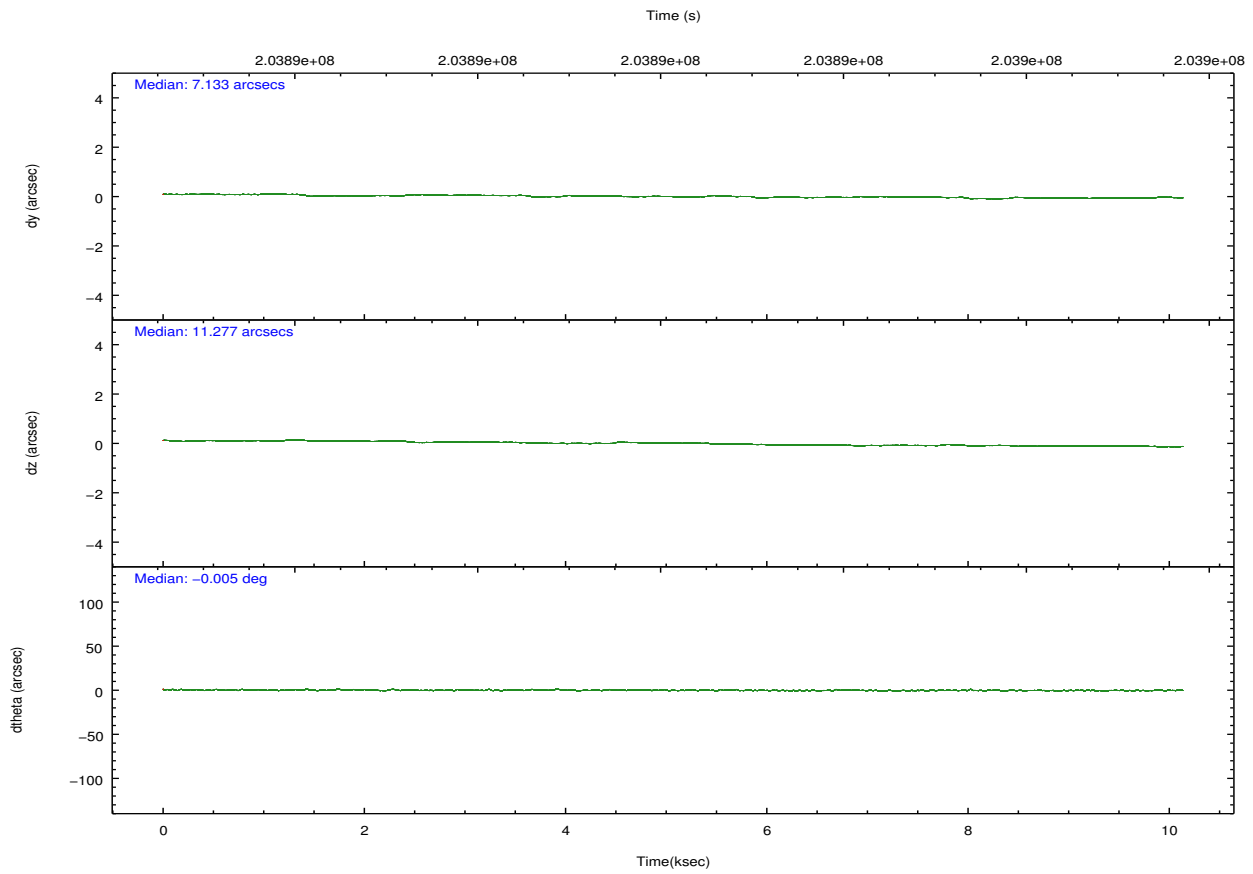
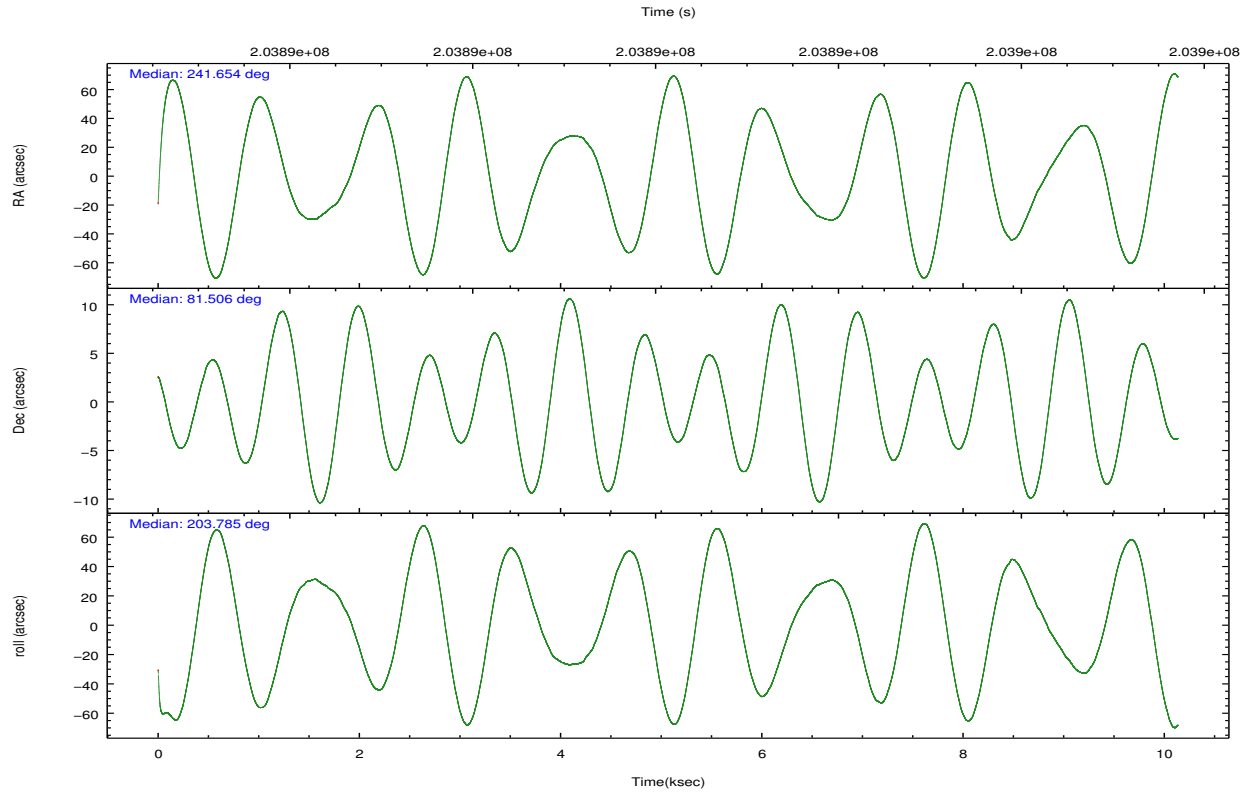
	ccd 2	ccd 3	ccd 6	ccd 7	ccd 8
grade 0 events	2349	1967	2497	2557	5493
	3%	3%	4%	7%	7%
grade 1 events	40	33	26	54	58
	0%	0%	0%	0%	0%
grade 2 events	1195	1009	1181	4878	4115
	1%	1%	1%	13%	5%
grade 3 events	550	592	645	2186	2098
	0%	0%	1%	6%	2%
grade 4 events	626	554	663	2114	2001
	0%	0%	1%	5%	2%
grade 5 events	960	1263	1144	3735	2020
	1%	2%	1%	10%	2%
grade 6 events	711	725	920	8833	4586
	1%	1%	1%	24%	6%
grade 7 events	59109	56140	54816	11409	53103
	90%	90%	88%	31%	72%

## 2.2 Compared Parameters

Parameter	Planned	Actual	Parameter	Planned	Actual
Instrument	ACIS	ACIS	Obspar format version number	7	7
Detector	ACIS-23678	ACIS-23678	Obspar file type	PREDICTED	ACTUAL
Grating	NONE	NONE	Obspar update status	NONE	UPDATED
Data mode	VFAINT	VFAINT	Number of optional ACIS chips dropped	0	0
Observation mode	POINTING	POINTING	On-chip summing requested	N	N
[deg] Pointing RA	241.760230	241.6531978201367	Subarray requested	NONE	NONE
[deg] Pointing Dec	81.527657	81.50546723350239	Alternating exposures requested	N	N
[deg] Pointing Roll	203.526392	203.7888048247339	[s] Primary exposure time	0.000000	3.1
[mm] SIM focus pos	-0.684267	-0.6828225247311905			
[mm] SIM defocus	0	0.001444936568705701			
[mm] SIM translation stage pos	-190.132523	-190.1425803651734			
[mm] SIM translation stage offset	0	0.01005778216563158			
[s] Observation start time (MET)	203887208.184000	203885434.06337			
Observation start date	2004-06-17T19:19:04	2004-06-17T18:50:34			
[s] Observation end time (MET)	203897208.184000	203898820.05146			
Observation end date	2004-06-17T22:05:44	2004-06-17T22:33:40			
Read mode	TIMED	TIMED			

## 2.3 Aspect



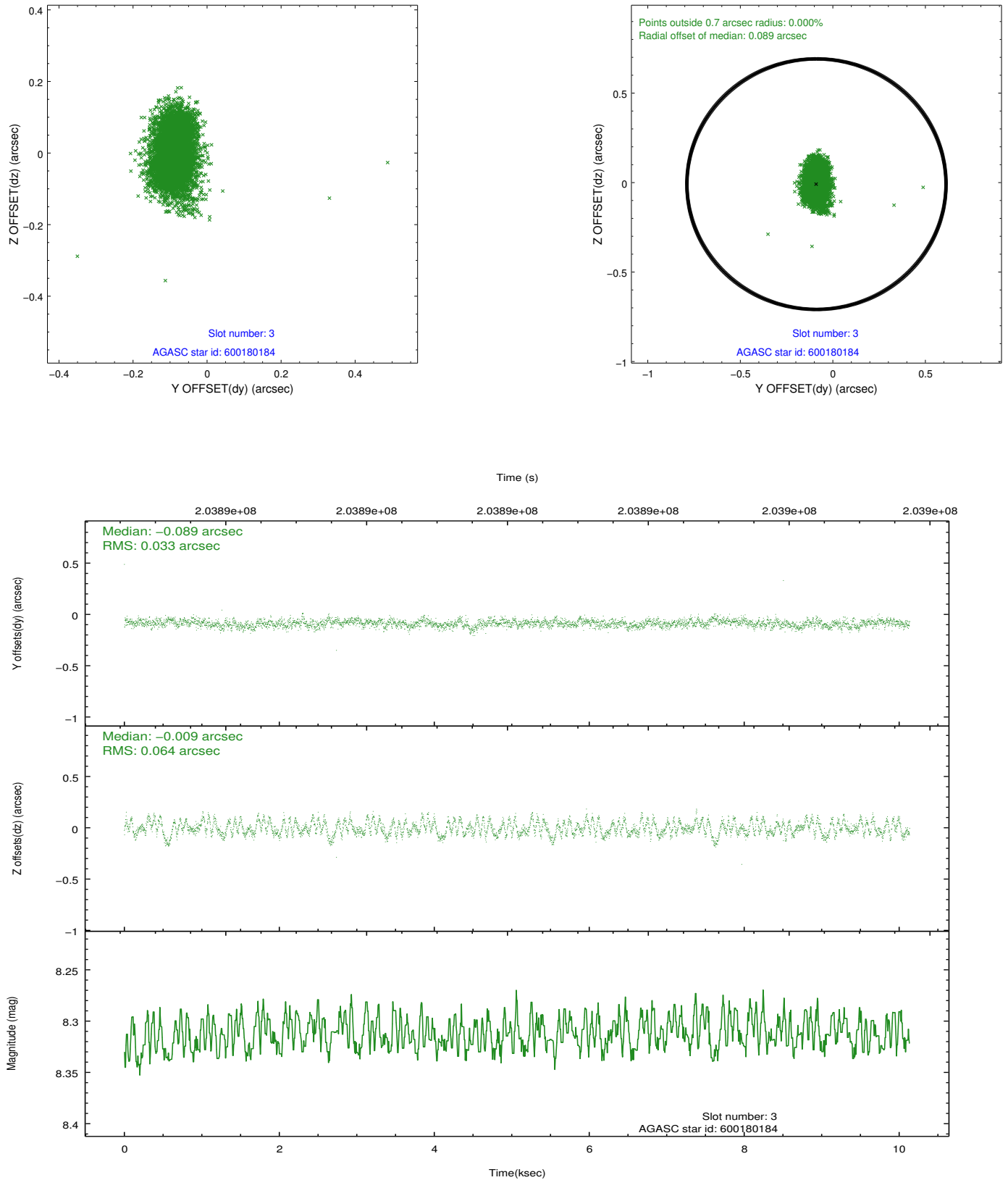


### Slot Statistics

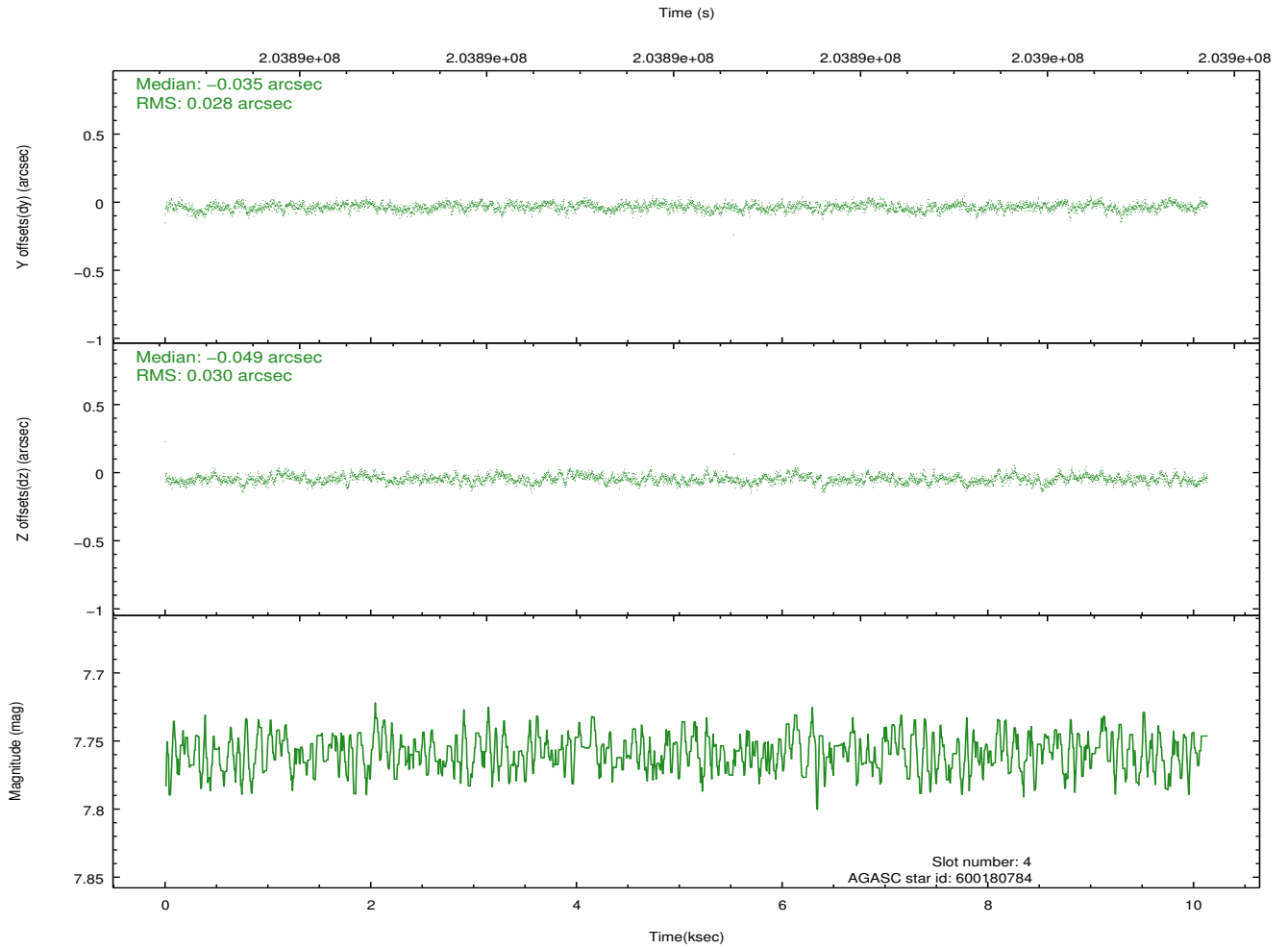
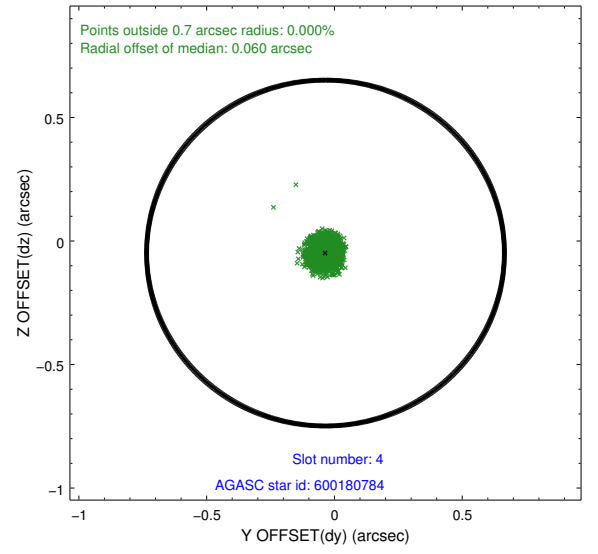
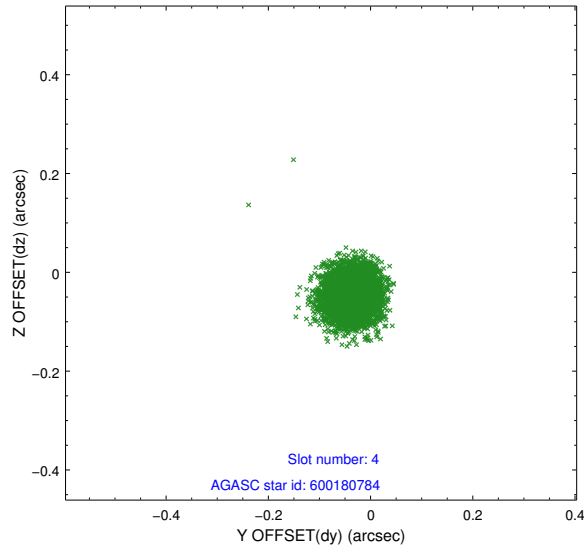
slot	status	id	mag	n_pts	med_dy	med_dz	dr1	dr2	ra	dec	mean_y	mean_z
0	FID	ACIS-S-2	7.10	2473	-0.037	-0.008	0.007	0.011	0.000000	0.000000	-759.91	-1732.52
1	FID	ACIS-S-4	7.20	2473	0.054	0.020	0.005	0.011	0.000000	0.000000	2153.20	175.49
2	FID	ACIS-S-5	7.23	2472	-0.049	-0.003	0.006	0.012	0.000000	0.000000	-1812.12	169.69
3	GUIDE	600180184	8.31	4945	-0.089	-0.009	0.075	0.124	242.510461	82.078959	-1133.97	-1673.32
4	GUIDE	600180784	7.76	4945	-0.035	-0.049	0.043	0.070	242.508218	81.144005	170.22	1429.23
5	GUIDE	600185384	8.55	4942	0.103	-0.031	0.054	0.091	244.503222	81.468012	-1270.32	749.97
6	GUIDE	600185816	8.98	4942	0.031	0.026	0.079	0.125	243.410736	82.087964	-1559.32	-1533.55
7	GUIDE	598478560	9.69	4942	-0.010	0.060	0.119	0.196	236.853076	81.478903	2423.21	-984.31

## 2.4 Star Slots

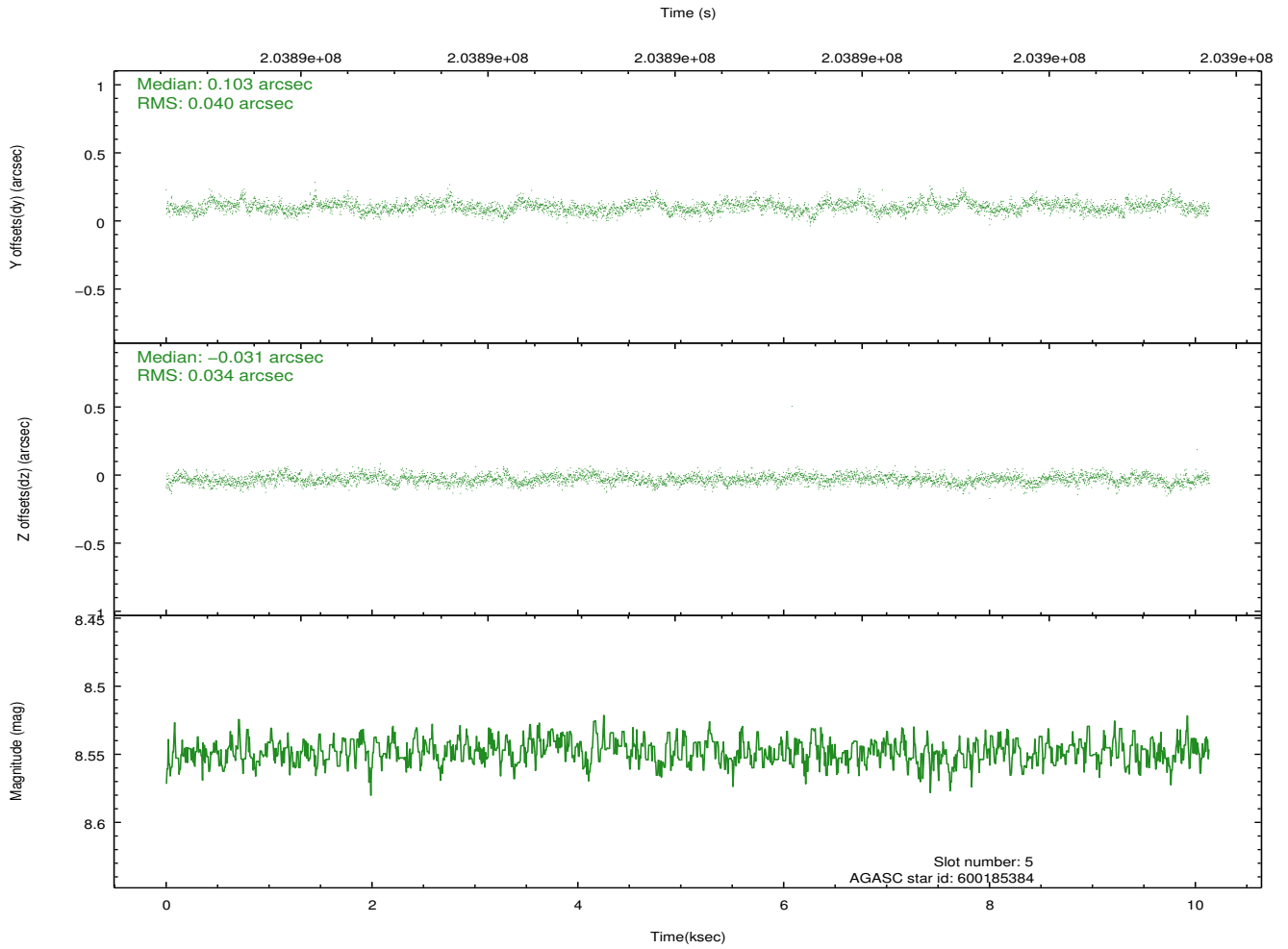
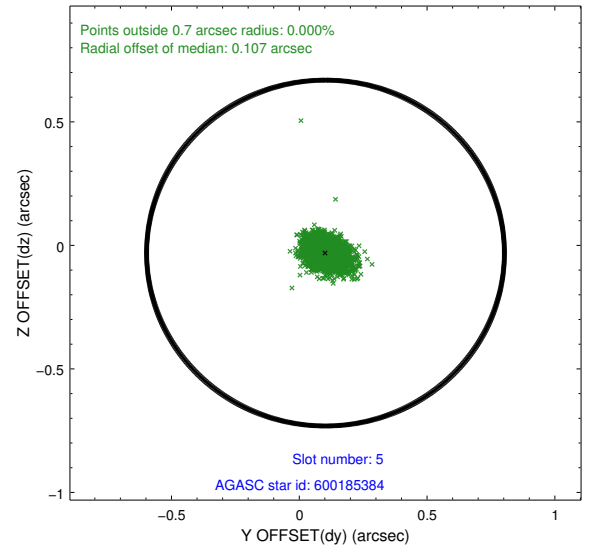
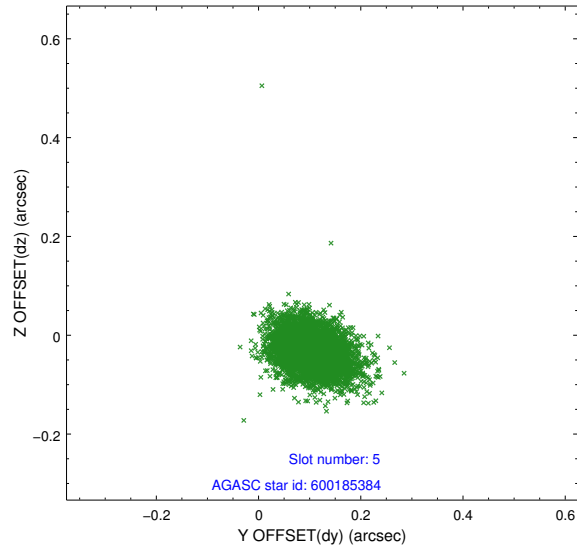
### 2.4.1 Slot 3



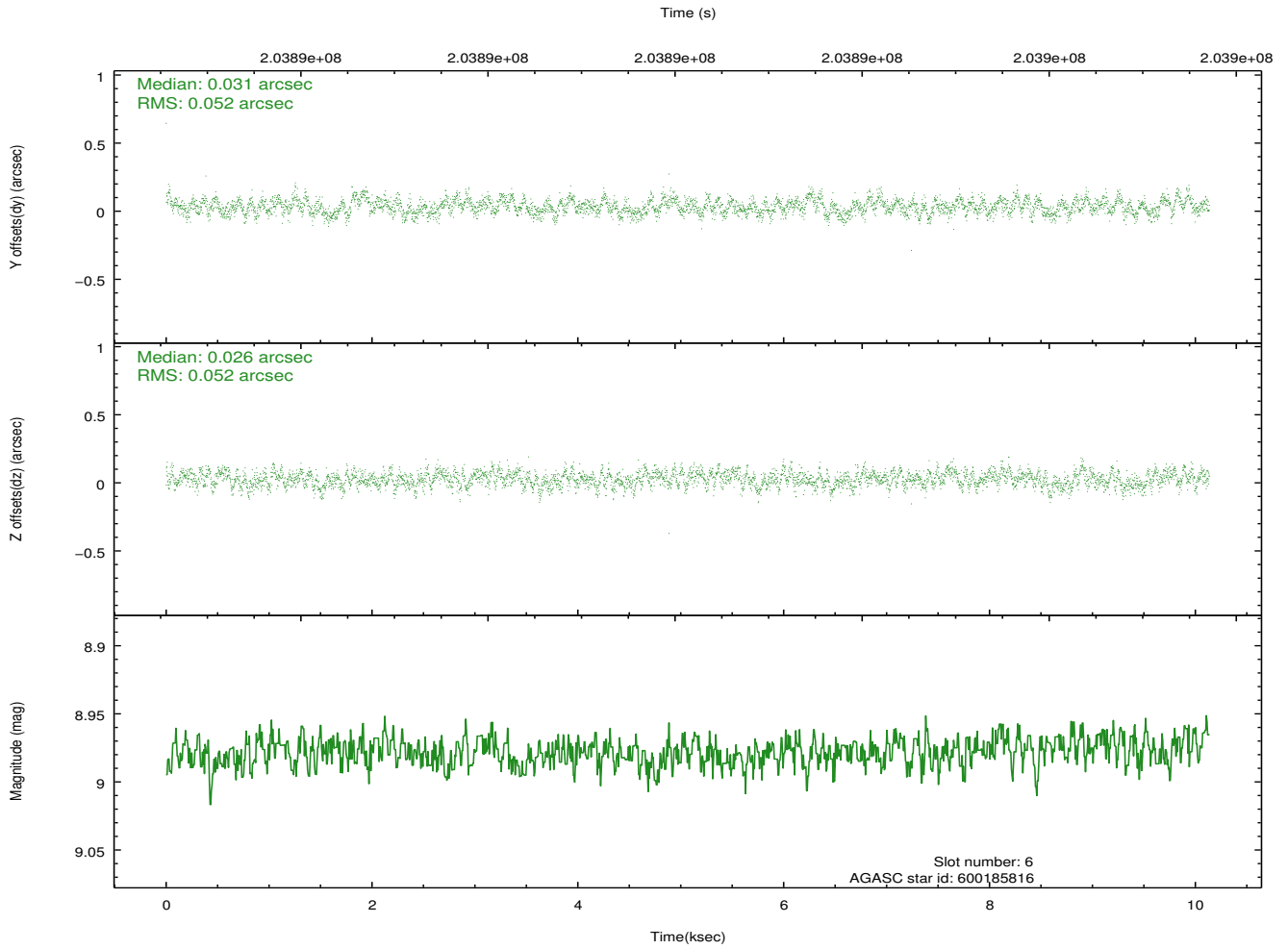
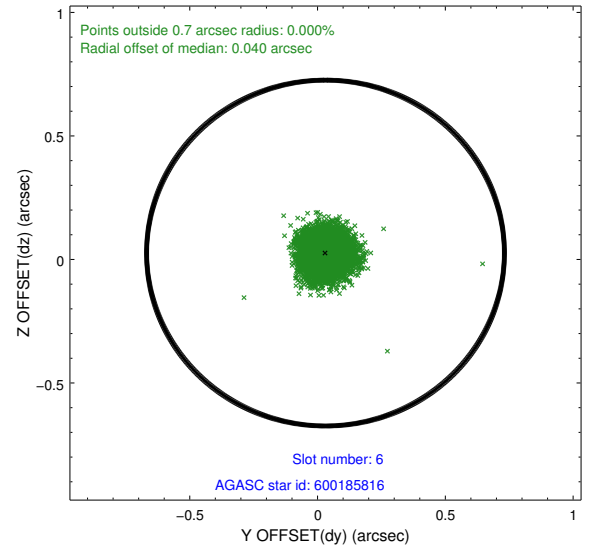
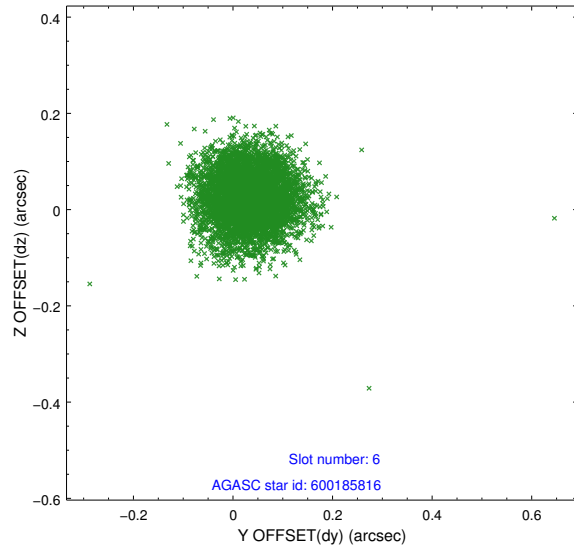
## 2.4.2 Slot 4



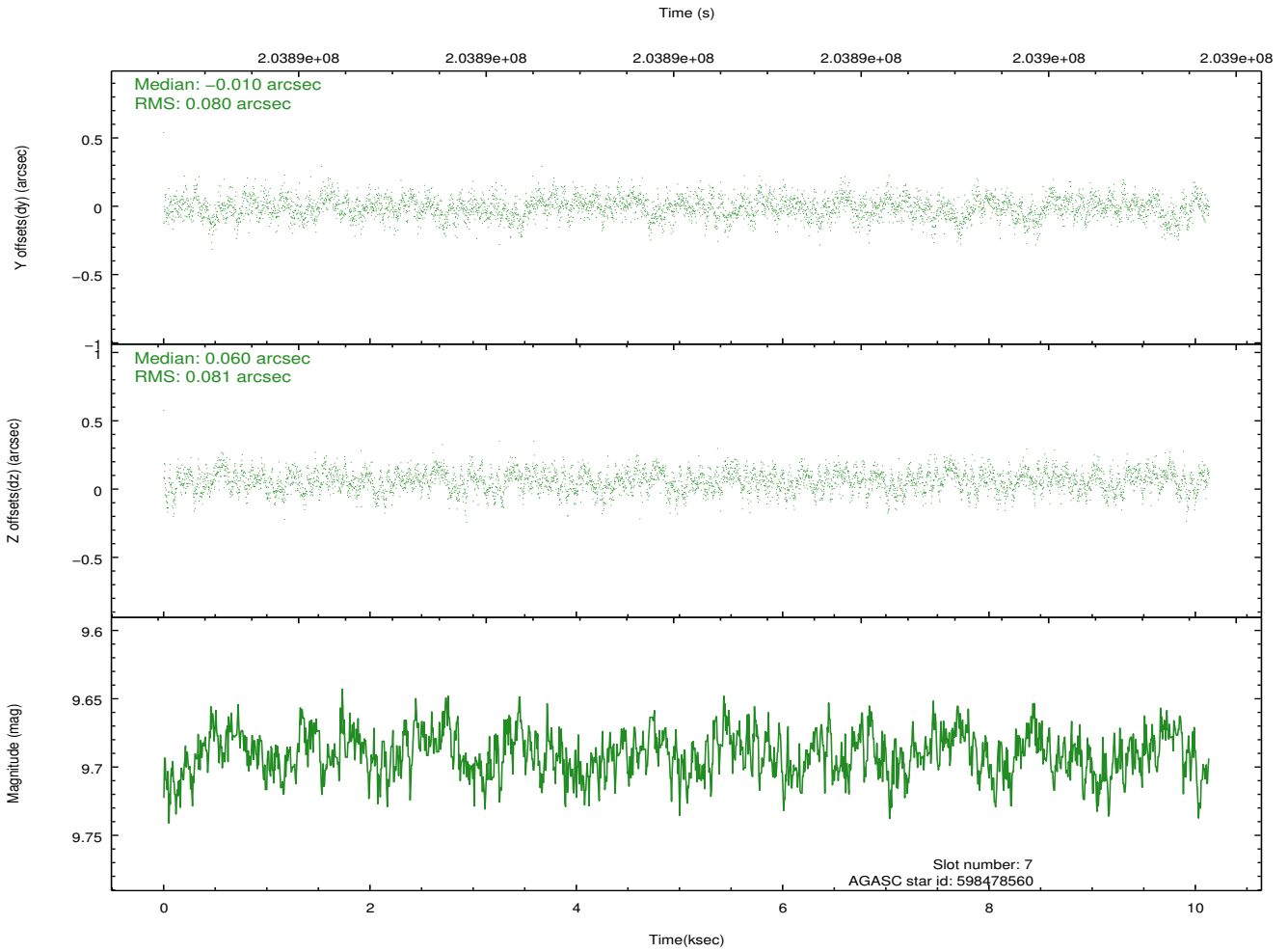
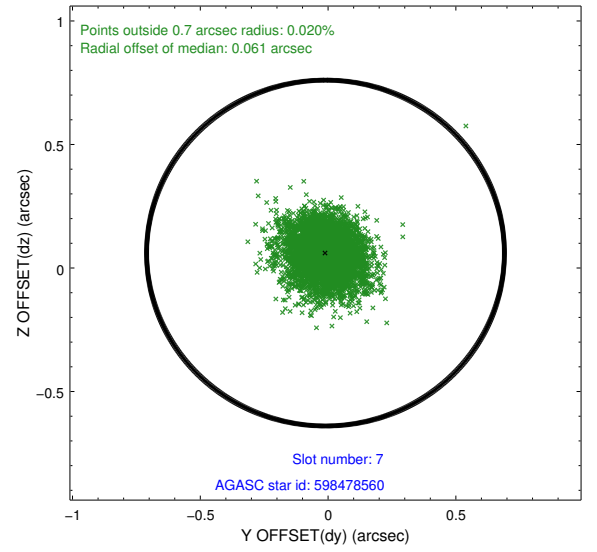
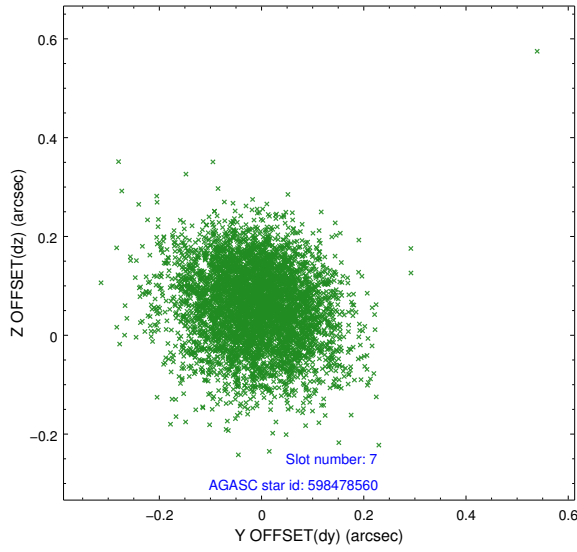
### 2.4.3 Slot 5



## 2.4.4 Slot 6

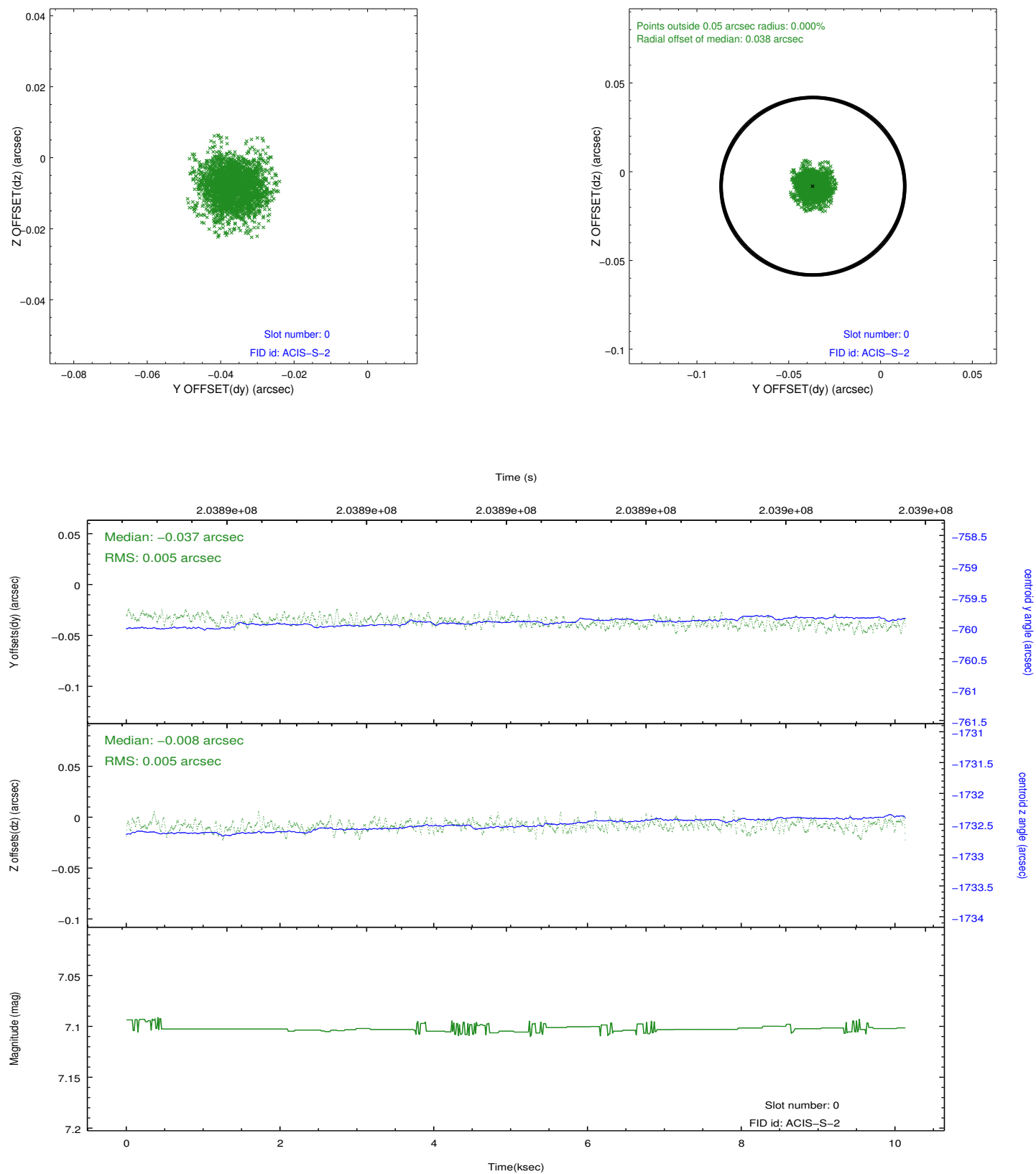


## 2.4.5 Slot 7

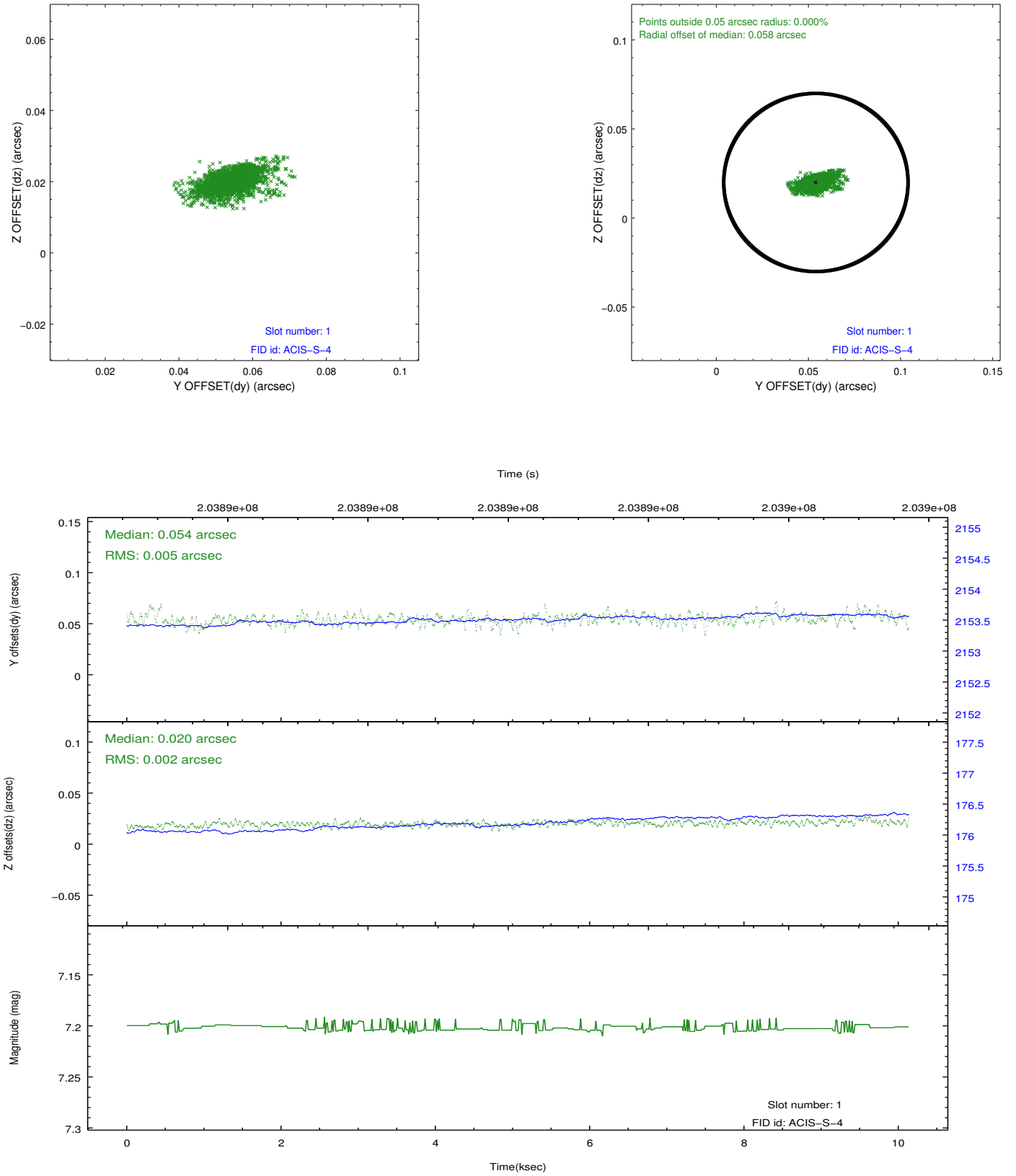


## 2.5 FID Slots

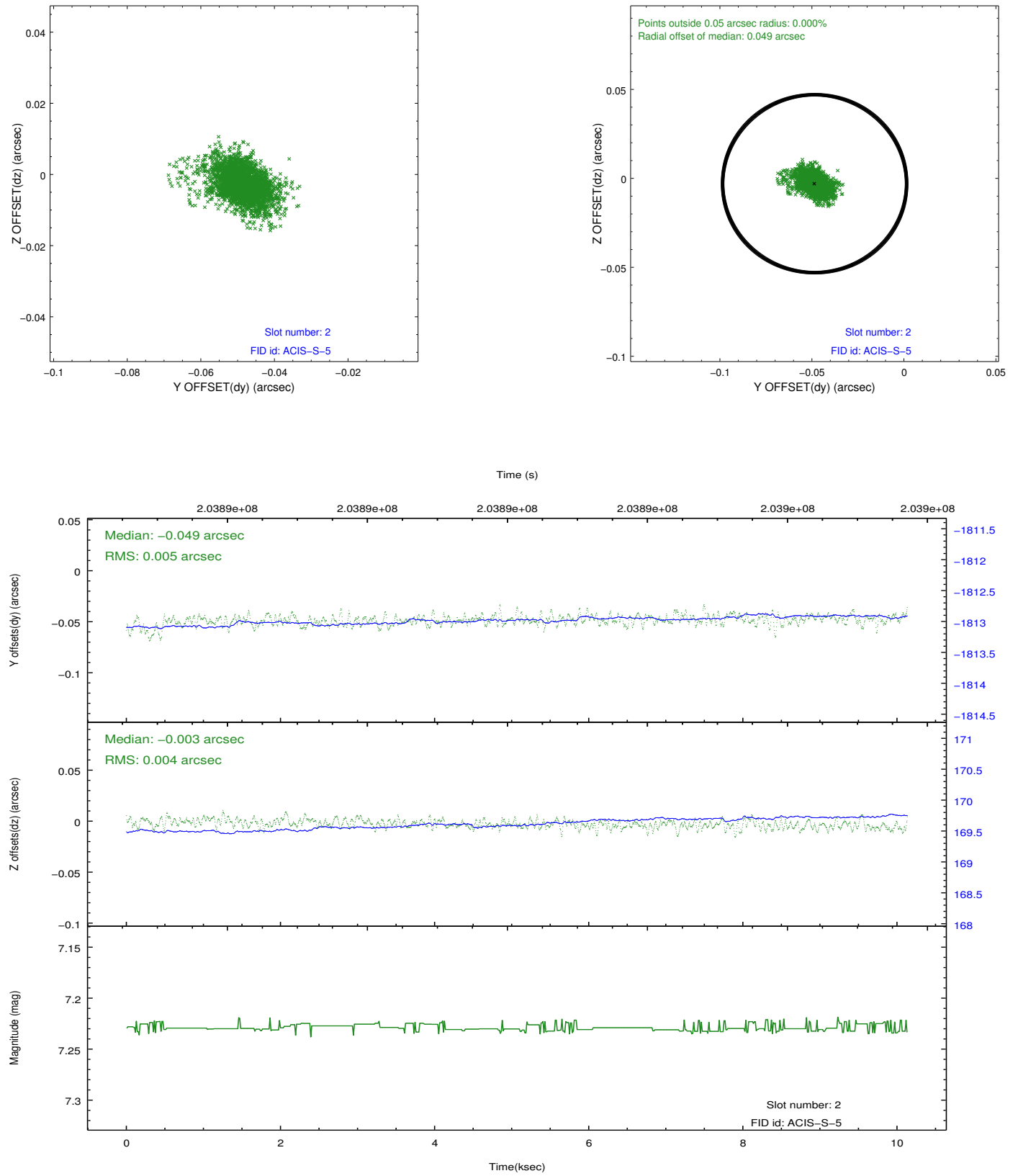
### 2.5.1 Slot 0



## 2.5.2 Slot 1



### 2.5.3 Slot 2



## **A Summary**

### **A.1 Status**

V&V Scientist	Jen Lauer
V&V Date (YYYY-MM-DD)	2012.12.18
V&V Edition	1
V&V Disposition and Status	OK
V&V Charge Time	10.13

### **A.2 Comments**