

V&V Reference Report

L2 ASCDS Version : 7.6.8

Observation 4574 - L2 Version 001
Chandra X-Ray Center

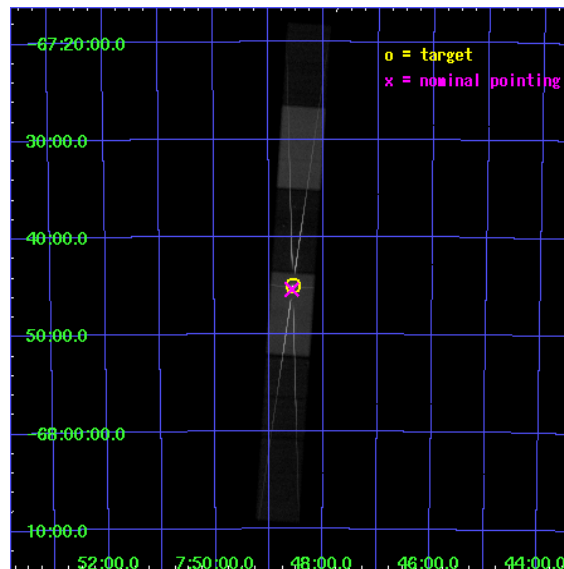
L2 Processing Date : Jul 2 2006

Contents

1	Front	2
2	OBI	3
2.1	OBI	3
2.1.1	Images	3
2.1.2	Bias	3
2.1.3	Parameters	4
2.1.4	Events	4
2.2	Compared Parameters	5
2.3	Aspect	6
2.4	Star Slots	9
2.4.1	Slot 3	9
2.4.2	Slot 4	10
2.4.3	Slot 5	11
2.4.4	Slot 6	12
2.4.5	Slot 7	13
2.5	FID Slots	14
2.5.1	Slot 0	14
2.5.2	Slot 1	15
2.5.3	Slot 2	16
3	Gratings	17
3.1	HEG Arm	17
3.2	MEG Arm	19
A	Summary	21
A.1	Status	21
A.2	Comments	21

1 Front

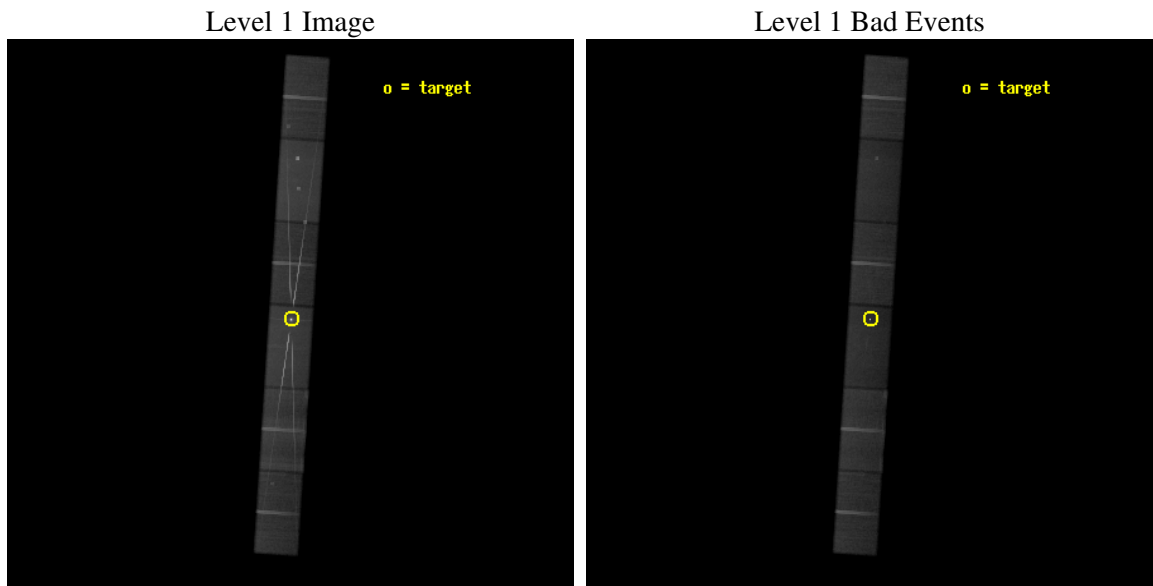
seq_num	400356
obs_id	4574
title	High Resolution Photospheric Spectroscopy of the Neutron Star in EXO0748-676
observer	Prof. FREDERIK PAERELS
object	EXO 0748-676
dtcycle	0
cycle	P
ra_targ	117.13875
dec_targ	-67.75
ra_nom	117.14428562533
dec_nom	-67.756875768215
roll_nom	93.698754360135
revision	2
ontime	126354.55984667
livetime	123537.89582193
ontime4	126352.71883661
ontime5	126354.55984667
ontime6	126352.71885651
ontime7	126354.55984667
ontime8	126349.03681639
ontime9	126354.55984667
l2events	1037697



2 OBI

2.1 OBI

2.1.1 Images

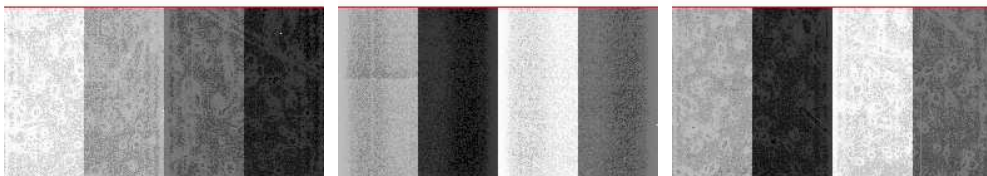


2.1.2 Bias

Chip 4

Chip 5

Chip 6



Chip 7

Chip 8

Chip 9



2.1.3 Parameters

obi_num	0
ascdsver	7.6.8
caldbver	3.2.2
date	2006-07-02T02:54:21
revision	2

sched_exp_time	126013.646000
ontime	126363.75643438
ontime4	126361.91542432
ontime5	126363.75643438
ontime6	126361.91544423
ontime7	126363.75643438
ontime8	126358.2334041
ontime9	126363.75643438
l1events	3665368

2.1.4 Events

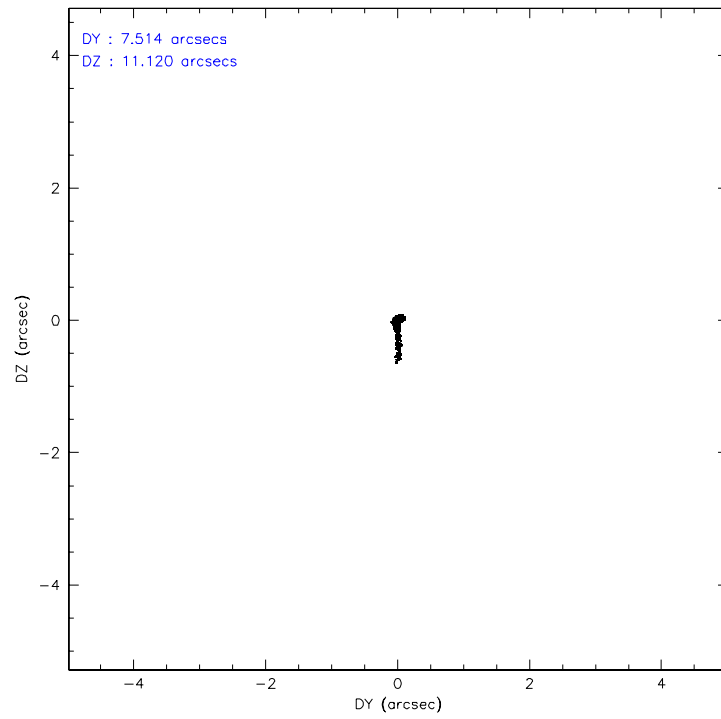
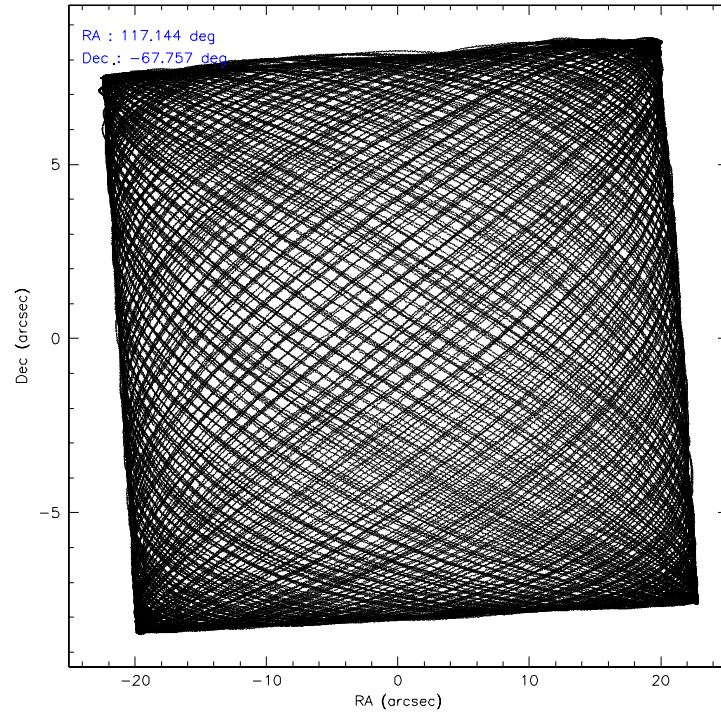
	ccd 4	ccd 5	ccd 6	ccd 7	ccd 8	ccd 9
level 1 events	519745	682025	590500	793939	620617	458542
rejected events	455954	363159	418240	384470	468334	395601
rejected %	87%	53%	70%	48%	75%	86%

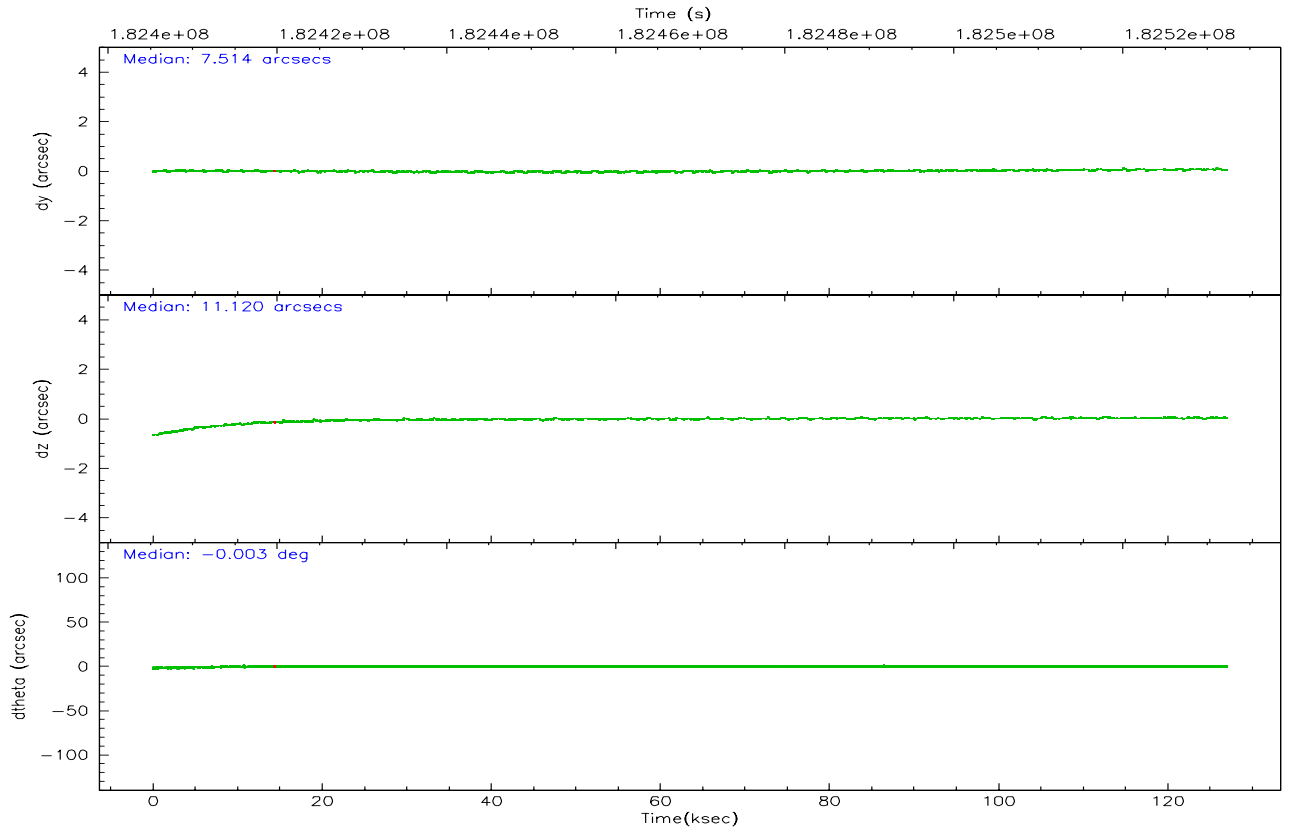
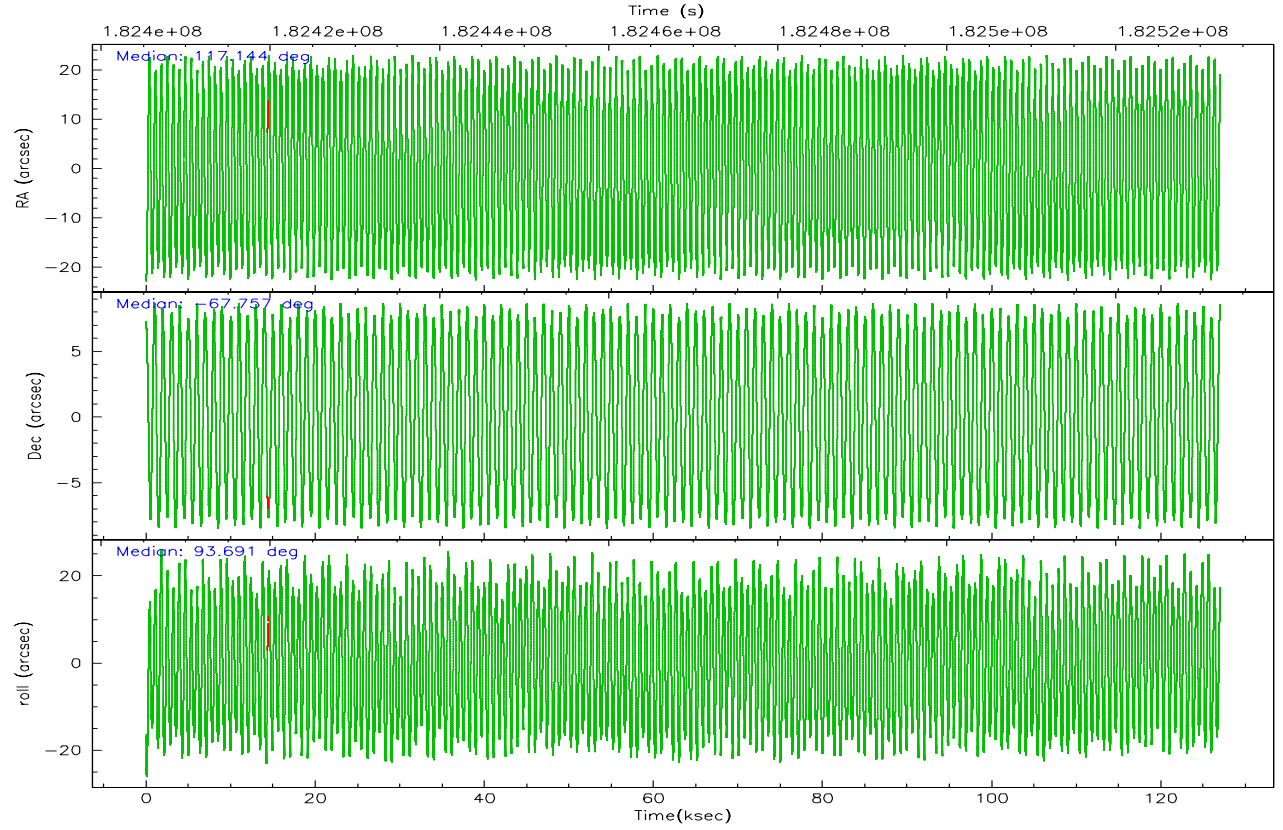
	ccd 4	ccd 5	ccd 6	ccd 7	ccd 8	ccd 9
grade 0 events	28703	31981	104788	45538	61090	27643
	5%	4%	17%	5%	9%	6%
grade 1 events	320	683	532	1508	397	208
	0%	0%	0%	0%	0%	0%
grade 2 events	12820	99219	26359	98226	28689	11455
	2%	14%	4%	12%	4%	2%
grade 3 events	6633	11559	11562	32342	14955	6723
	1%	1%	1%	4%	2%	1%
grade 4 events	6309	10859	11453	31835	14140	6515
	1%	1%	1%	4%	2%	1%
grade 5 events	18150	35838	19967	52605	24765	20489
	3%	5%	3%	6%	3%	4%
grade 6 events	9334	165283	18110	201563	33439	10611
	1%	24%	3%	25%	5%	2%
grade 7 events	437476	326603	397729	330322	443142	374898
	84%	47%	67%	41%	71%	81%

2.2 Compared Parameters

Parameter	Planned	Actual	Parameter	Planned	Actual
Instrument	ACIS	ACIS	Obspar format version number	6	6
Detector	ACIS-456789	ACIS-456789	Obspar file type	PREDICTED	ACTUAL
Grating	HETG	HETG	Obspar update status	NONE	UPDATED
Data mode	FAINT	FAINT	On-chip summing requested	N	N
Observation mode	POINTING	POINTING	Subarray requested	CUSTOM	CUSTOM
Pointing RA	117.185045	117.1442856253291	Subarray start row	1	1
Pointing Dec	-67.779313	-67.75687576821505	Subarray row count	542	542
Pointing Roll	93.579861	93.69875436013491	Alternating exposures requested	N	N
SIM focus pos (mm)	-0.684267	-0.6828225247311905	Primary exposure time	0.000000	1.8
SIM defocus (mm)	0	0.001444936568705701			
SIM translation stage pos (mm)	-184.532523	-184.52811429679			
SIM translation stage offset (mm)	-5.6	-5.604408286217847			
Observation start time	182406313.184000	182404715.6868			
Observation start date	2003-10-13T04:24:09	2003-10-13T03:58:35			
Observation end time	182532327.184000	182532641.8423			
Observation end date	2003-10-14T15:24:23	2003-10-14T15:30:41			
Read mode	TIMED	TIMED			

2.3 Aspect



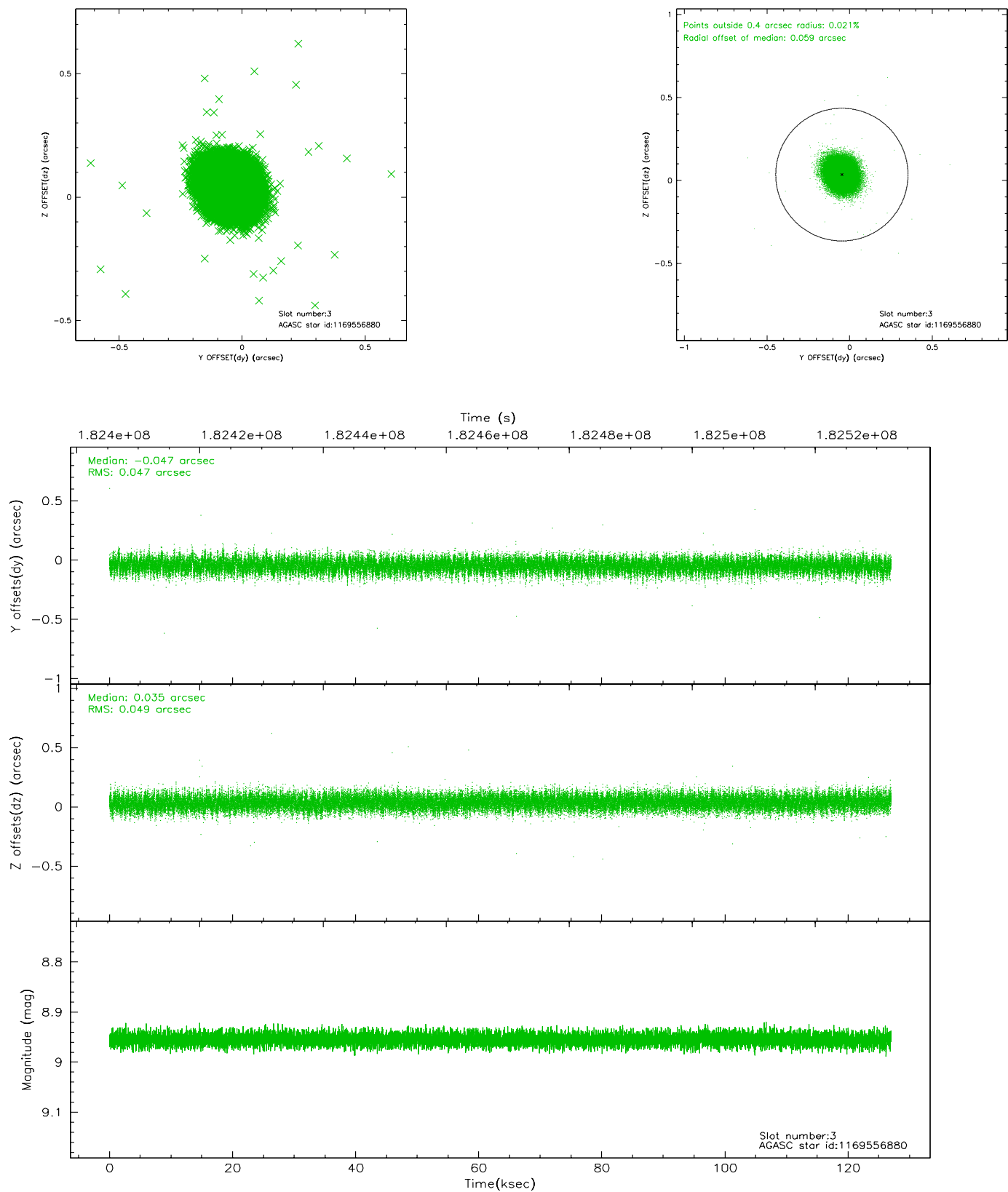


Slot Statistics

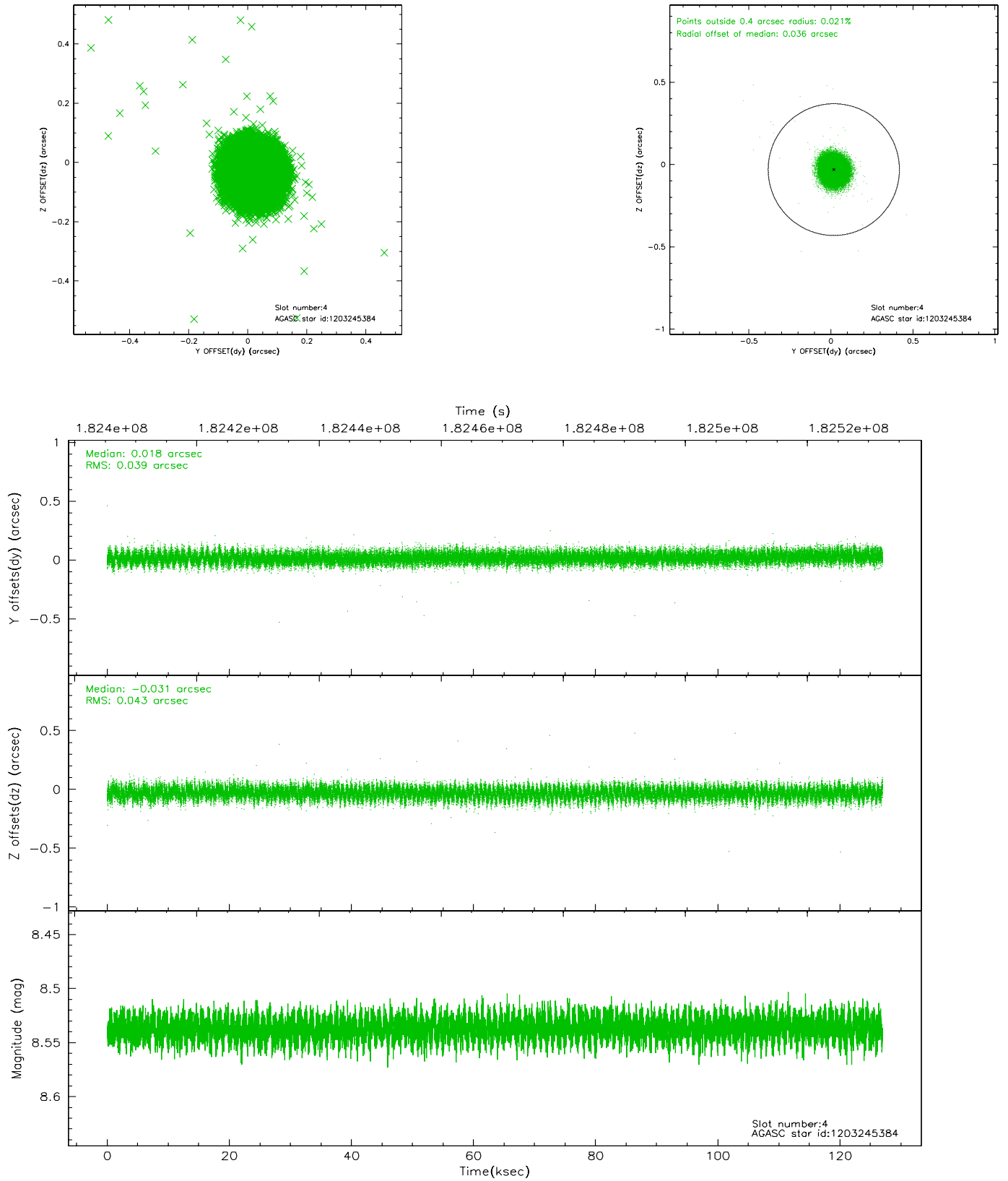
slot	status	id	mag	n_pts	med_dy	med_dz	dr1	dr2	ra	dec	mean_y	mean_z
0	FID	ACIS-S-2	7.08	30974	-0.046	-0.096	0.007	0.015	0.000000	0.000000	-759.96	-1847.97
1	FID	ACIS-S-4	7.18	30974	0.025	0.048	0.005	0.010	0.000000	0.000000	2153.46	60.70
2	FID	ACIS-S-5	7.22	30974	-0.010	0.056	0.007	0.013	0.000000	0.000000	-1812.87	54.32
3	GUIDE	1169556880	8.95	61911	-0.047	0.035	0.072	0.117	118.476472	-67.455164	1035.23	-1850.34
4	GUIDE	1203245384	8.54	61933	0.018	-0.031	0.062	0.098	117.096059	-68.354351	-2058.64	247.09
5	GUIDE	1203248984	9.66	61915	0.026	-0.078	0.121	0.201	117.212023	-68.341440	-2021.77	90.27
6	GUIDE	1203257328	9.70	61891	0.078	-0.005	0.130	0.206	116.686345	-67.749877	145.52	672.36
7	GUIDE	1203258824	9.89	61818	-0.083	0.074	0.110	0.181	118.613315	-67.511932	815.65	-2020.97

2.4 Star Slots

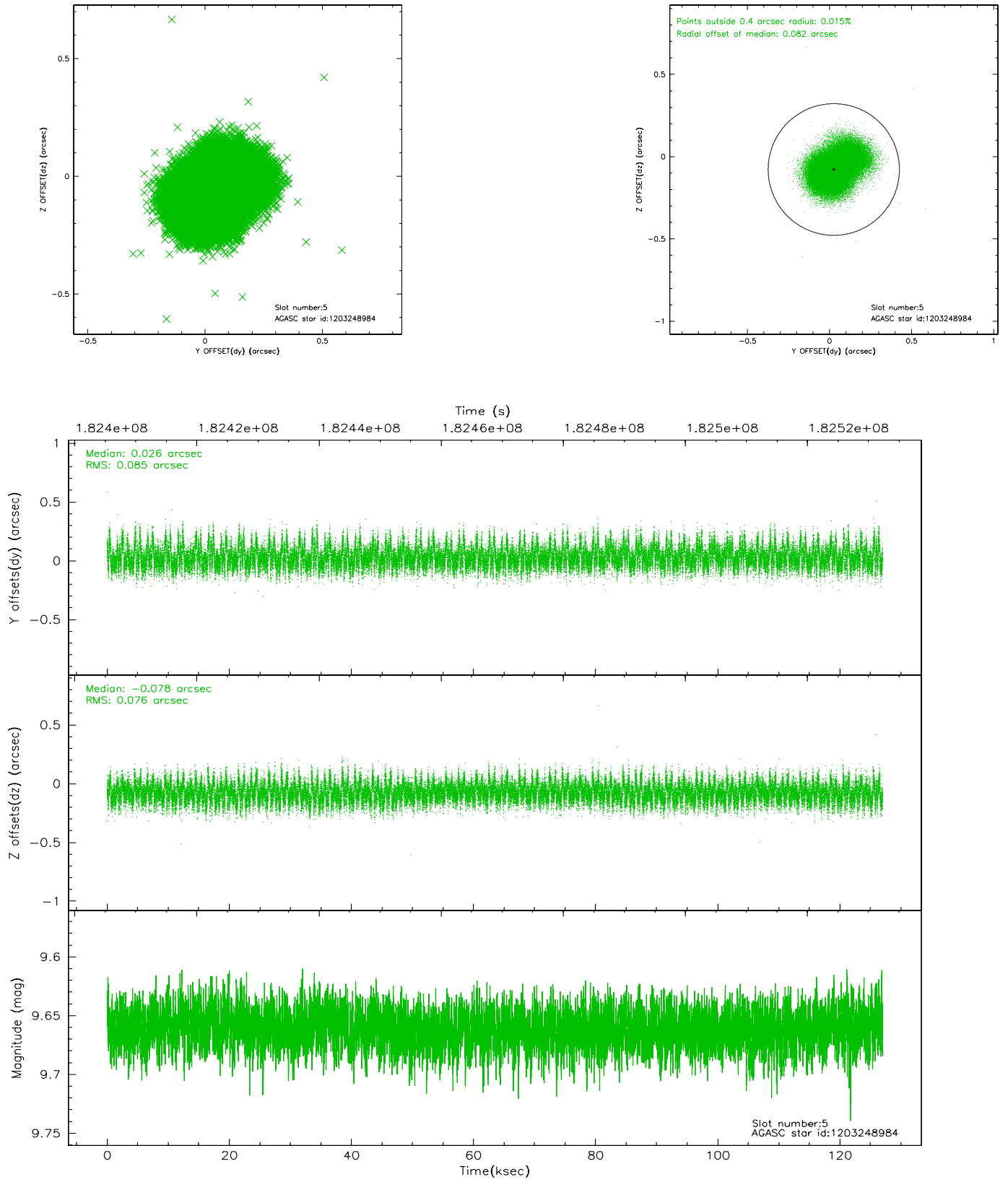
2.4.1 Slot 3



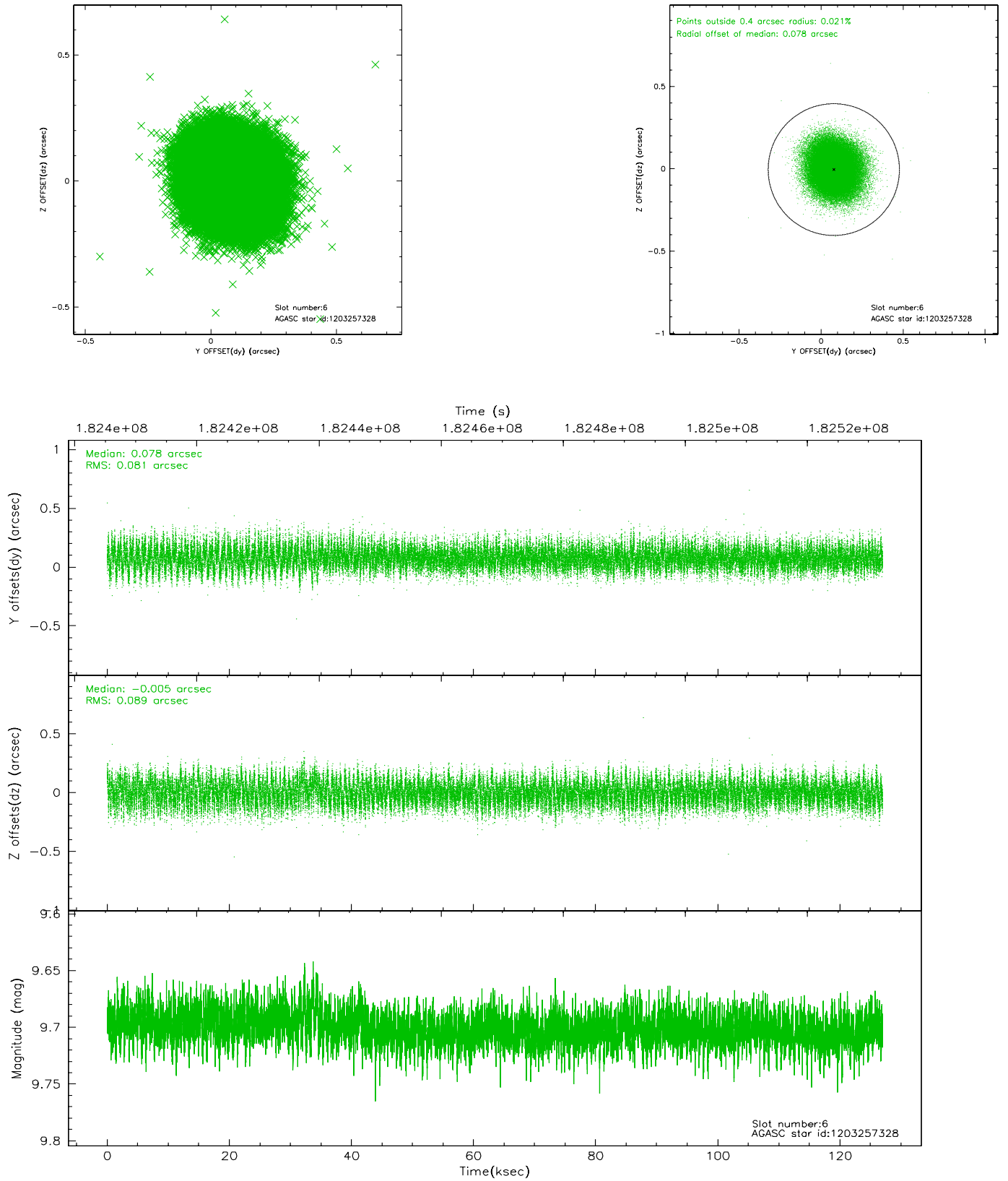
2.4.2 Slot 4



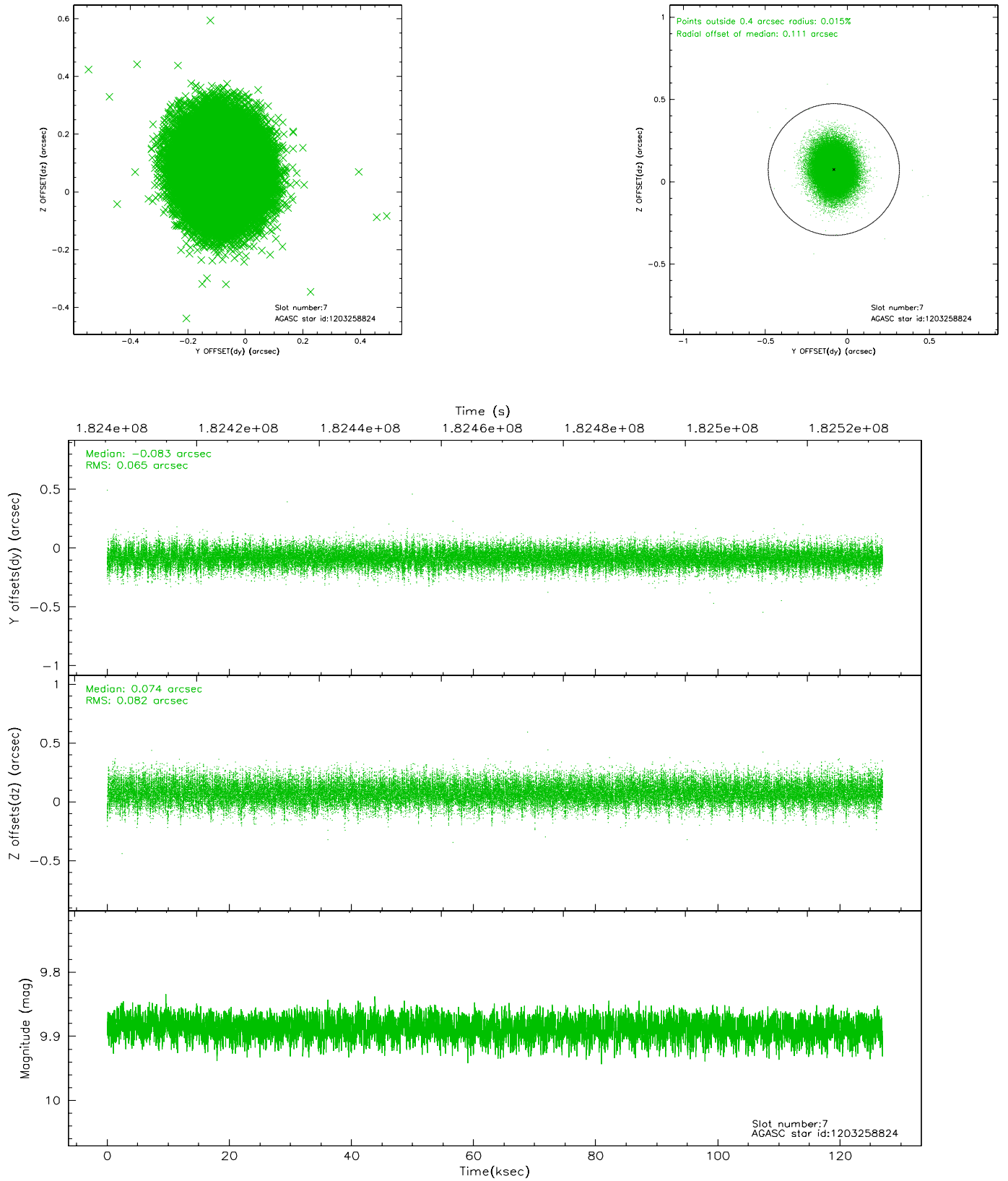
2.4.3 Slot 5



2.4.4 Slot 6

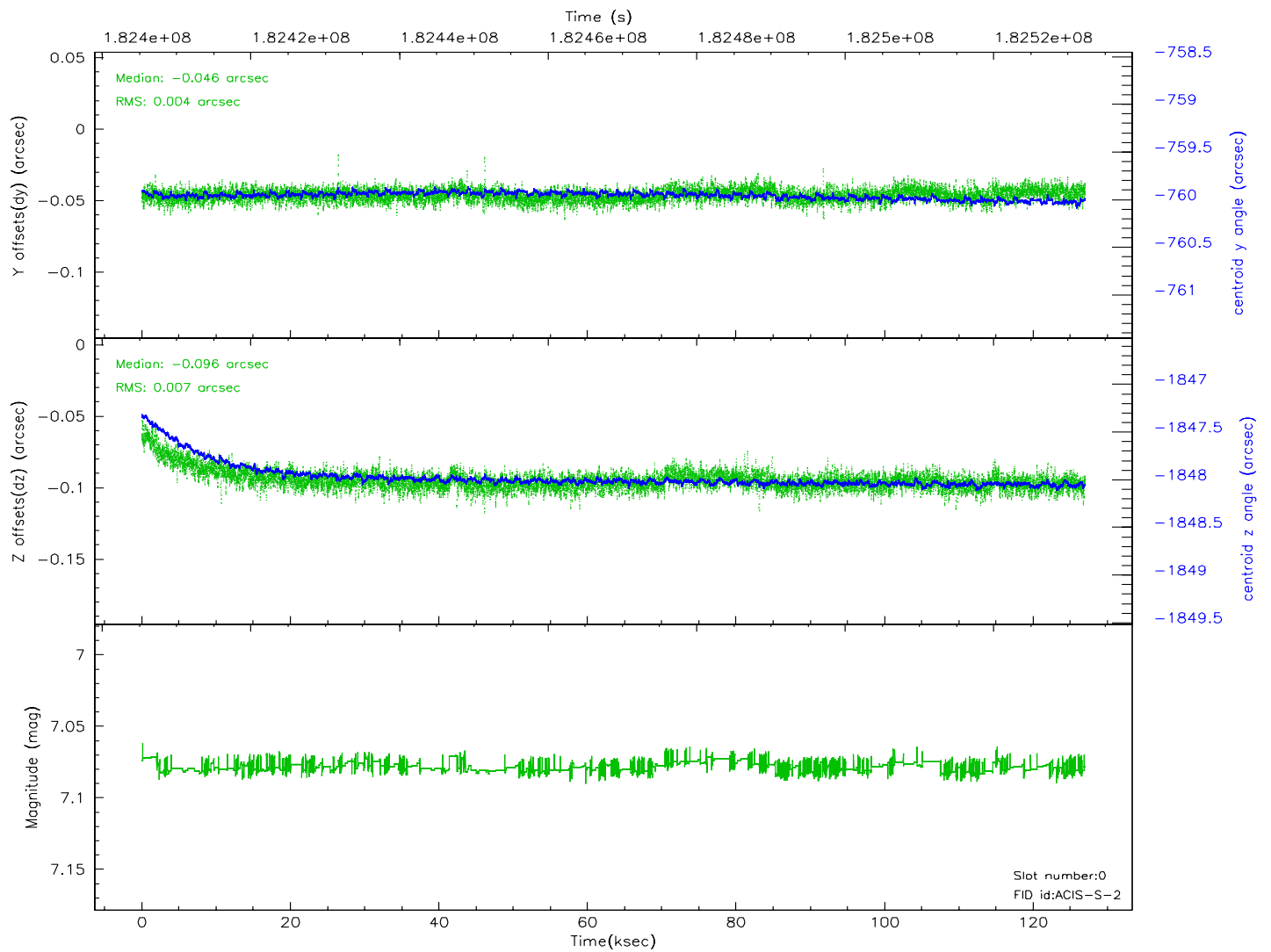
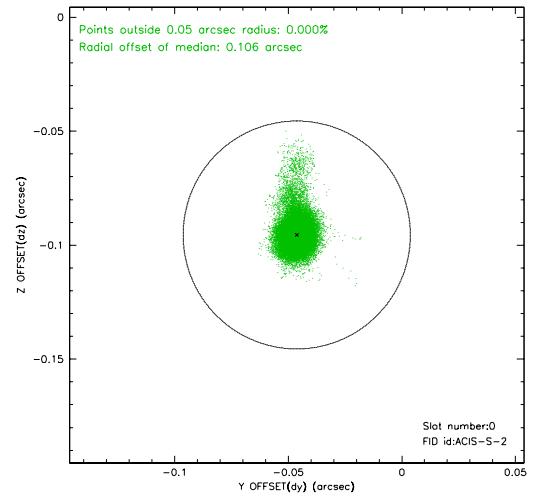
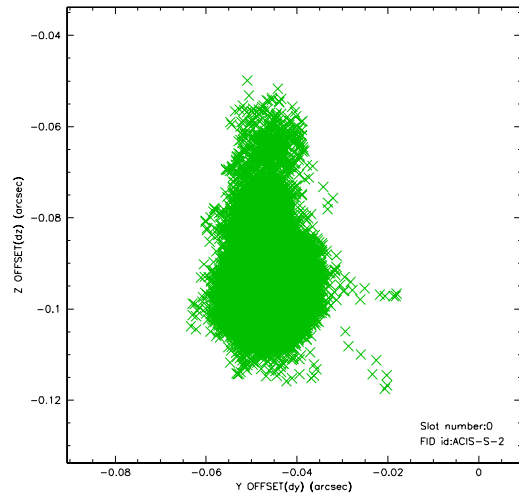


2.4.5 Slot 7

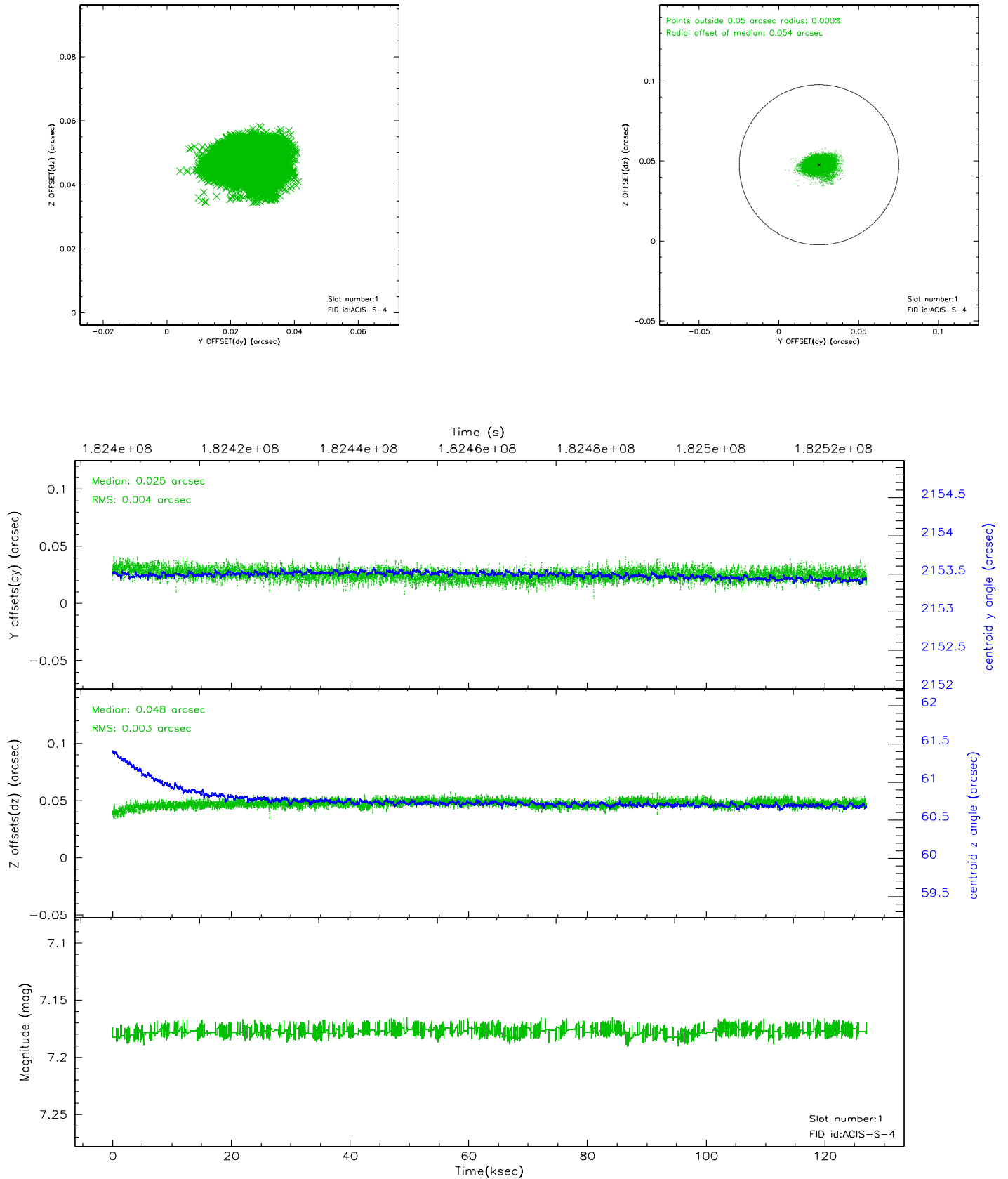


2.5 FID Slots

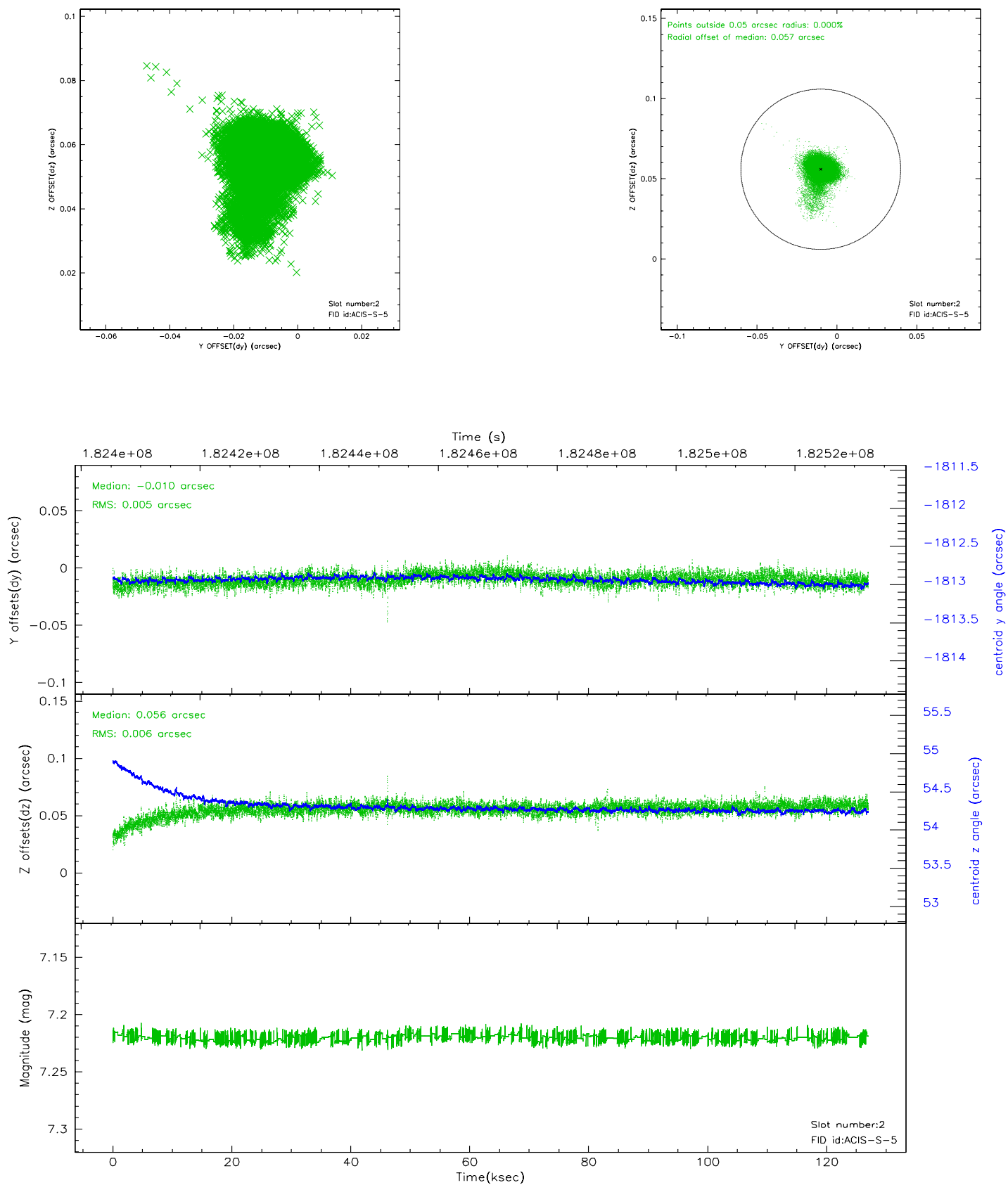
2.5.1 Slot 0



2.5.2 Slot 1

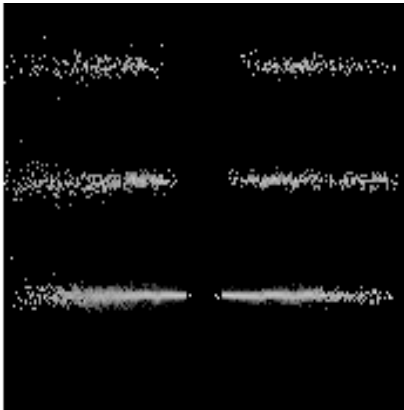


2.5.3 Slot 2

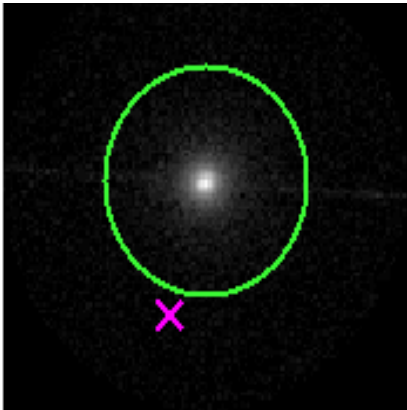


3 Gratings

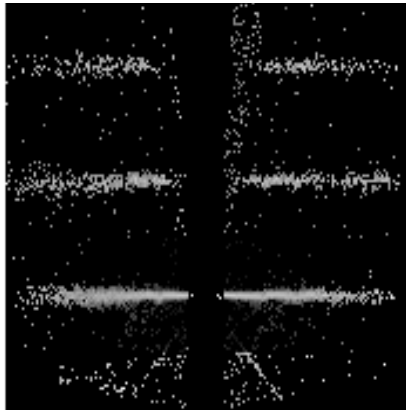
3.1 HEG Arm



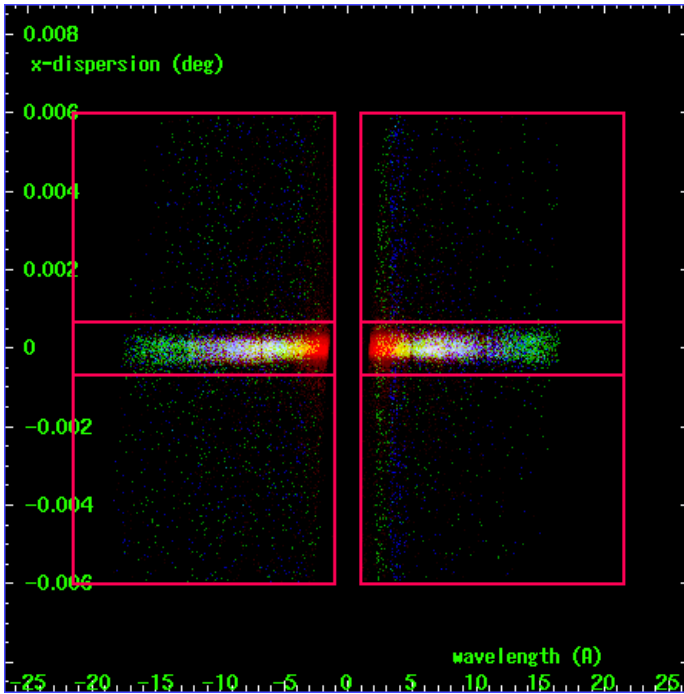
HEG Order Sort 123



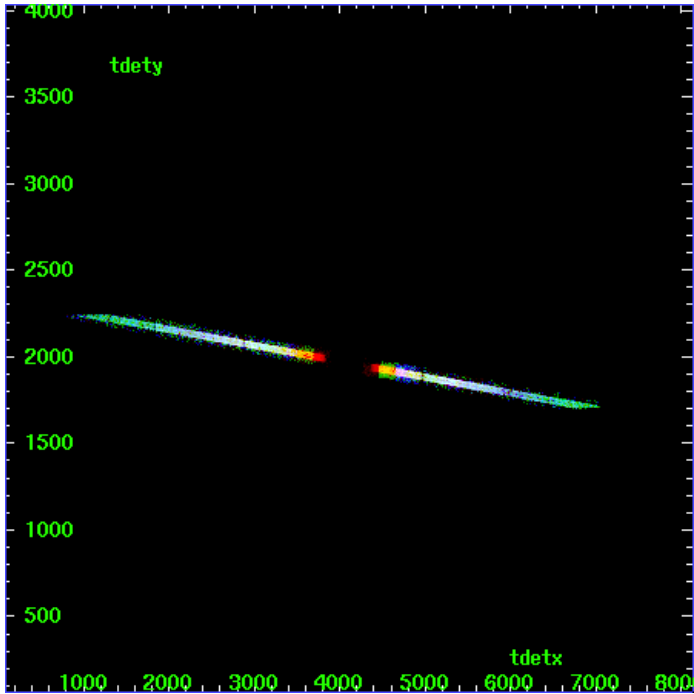
HEG Zero Order



HEG Order Sort ALL

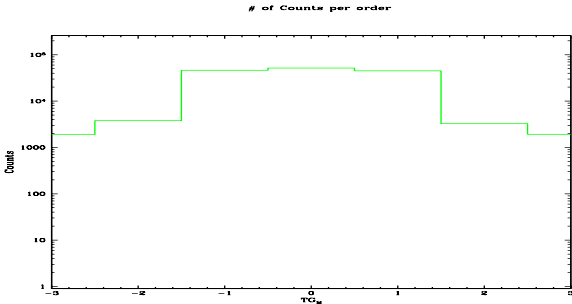


Spot Image HEG

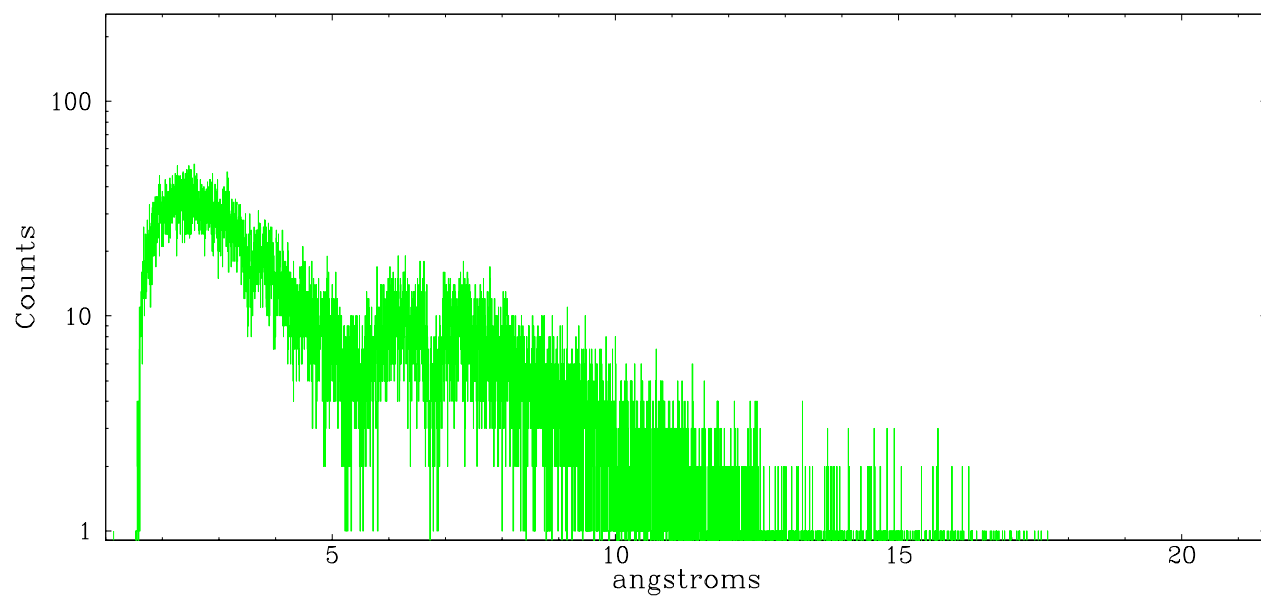


Full Detector HEG

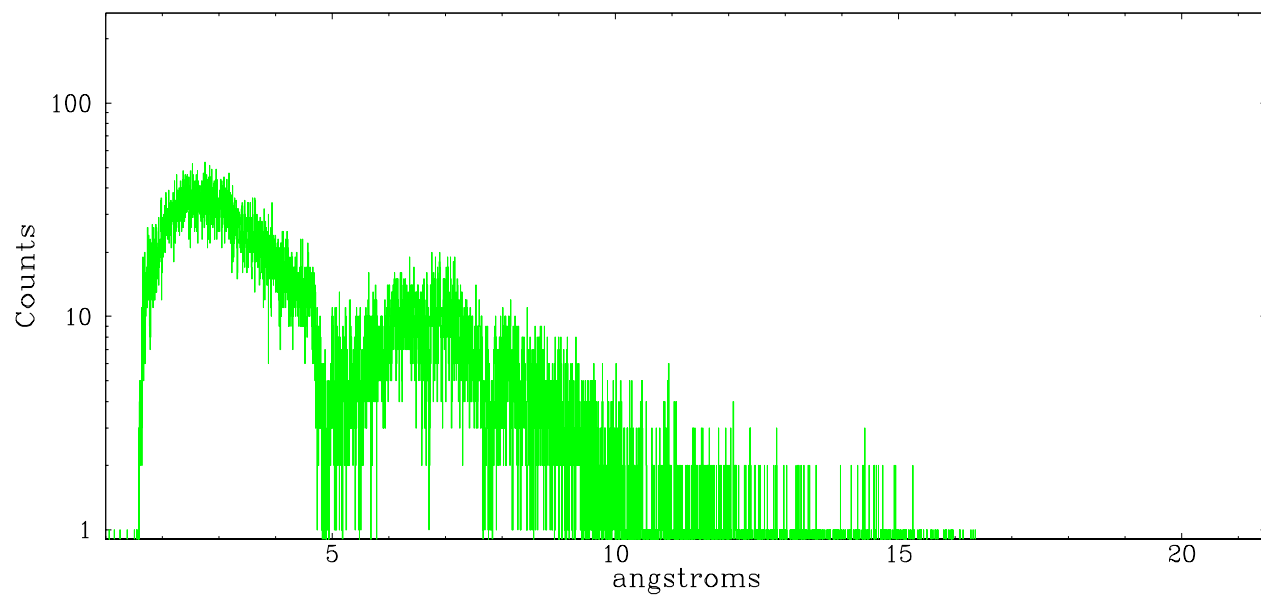
	order -3	order -2	order -1	order 0	order 1	order 2	order 3
Events	1902	3776	46296	51602	44965	3259	1913



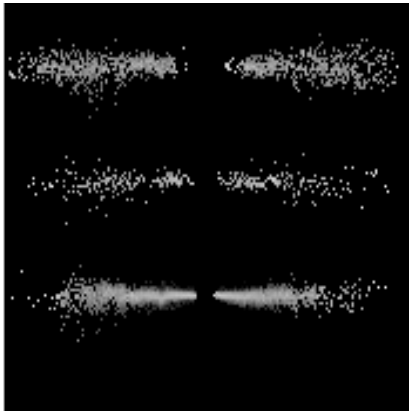
heg order -1



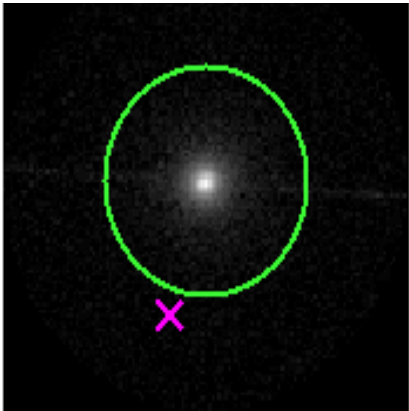
heg order +1



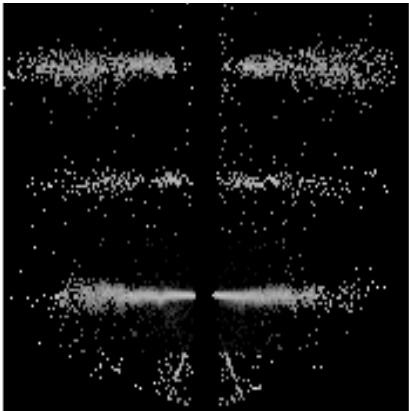
3.2 MEG Arm



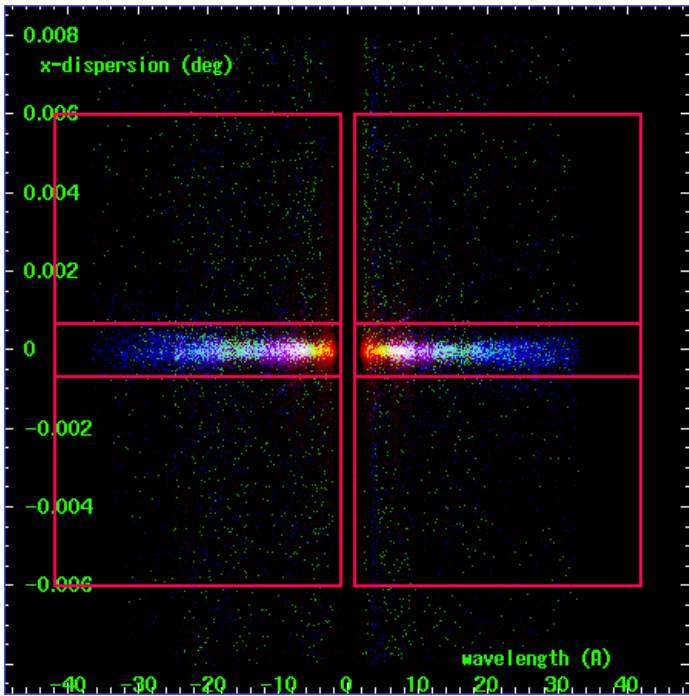
MEG Order Sort 123



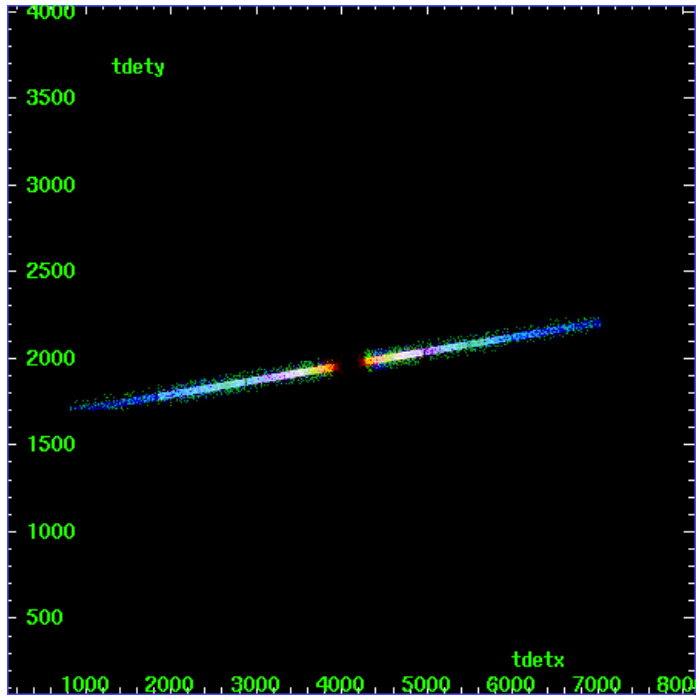
MEG Zero Order



MEG Order Sort ALL

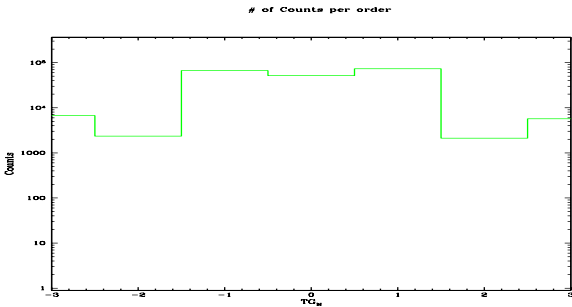


Spot Image MEG

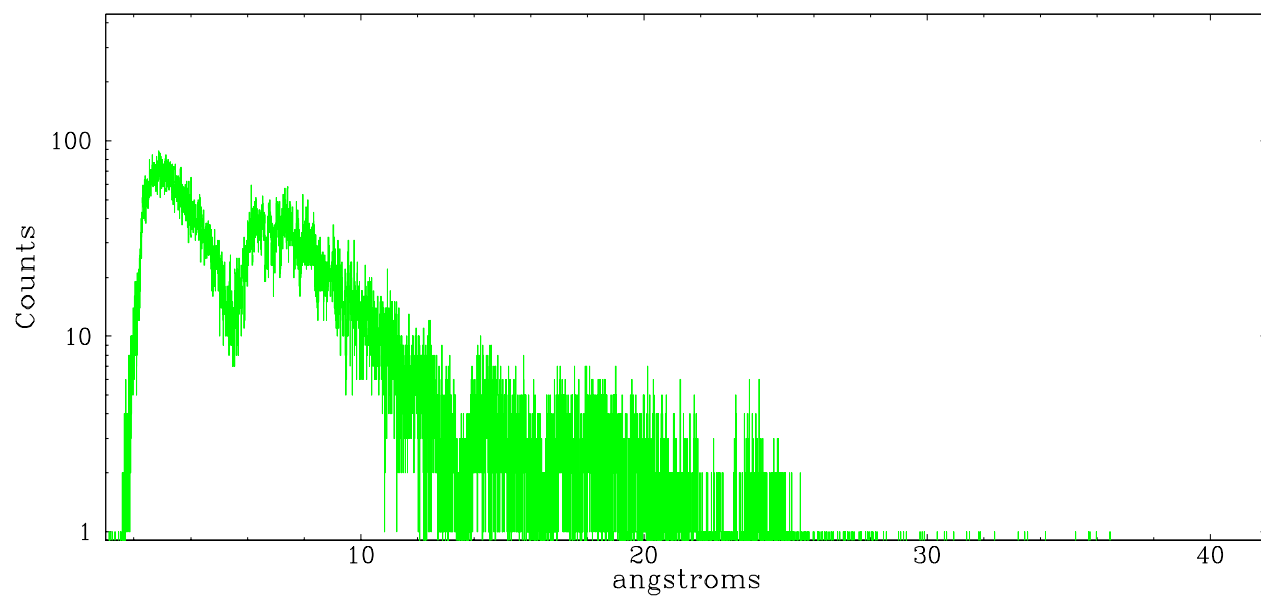


Full Detector MEG

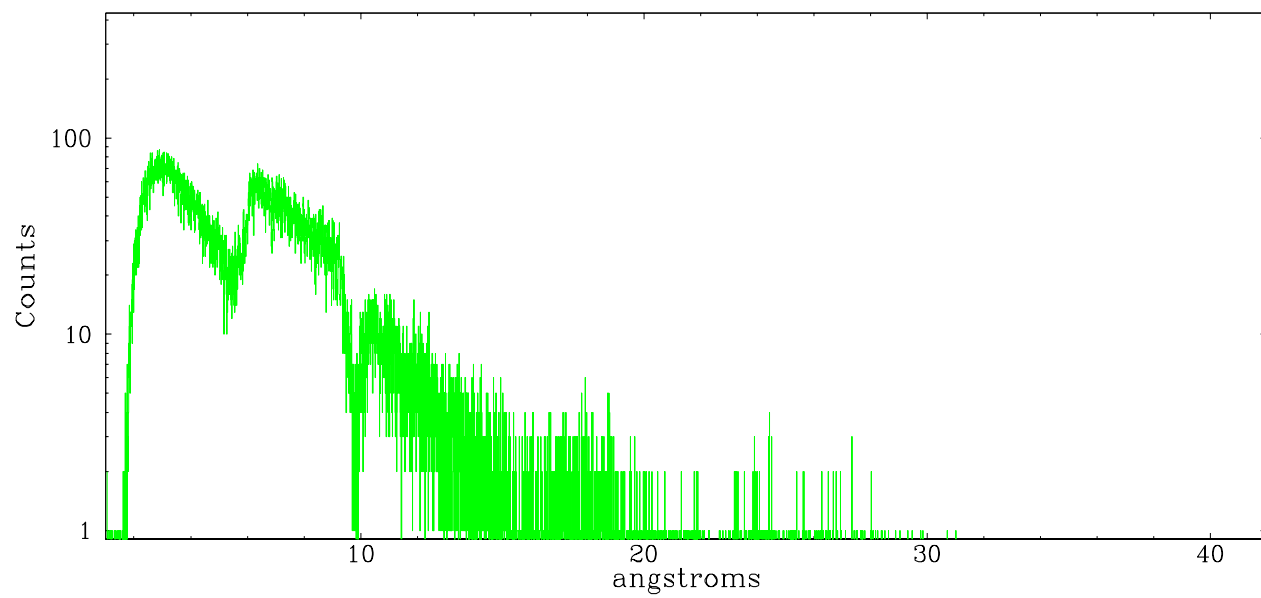
	order -3	order -2	order -1	order 0	order 1	order 2	order 3
Events	6685	2345	66268	51602	72945	2119	5687



meg order -1



meg order +1



A Summary

A.1 Status

V&V Scientist	Beth Sundheim
V&V Date (YYYY-MM-DD)	2006.07.03
V&V Edition	1
V&V Disposition and Status	OK
V&V Charge Time	123.581

A.2 Comments