

V&V Reference Report

L2 ASCDS Version : 7.6.7.2

Observation 4572 - L2 Version 001
Chandra X-Ray Center

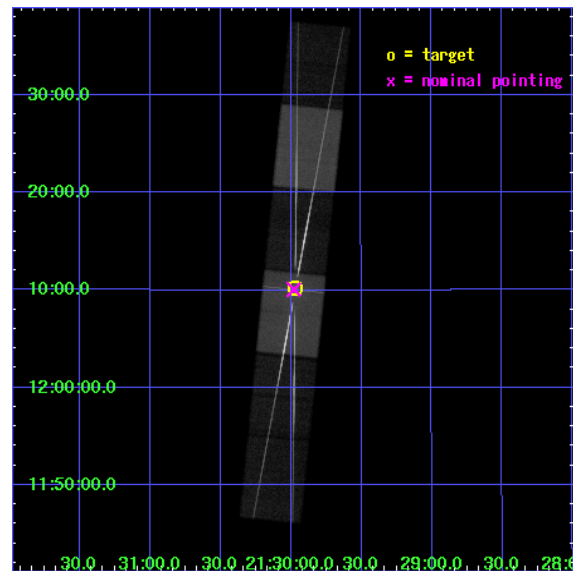
L2 Processing Date : May 25 2006

Contents

1	Front	2
2	OBI	3
2.1	OBI	3
2.1.1	Images	3
2.1.2	Bias	3
2.1.3	Parameters	4
2.1.4	Events	4
2.2	Compared Parameters	5
2.3	Aspect	6
2.4	Star Slots	9
2.4.1	Slot 3	9
2.4.2	Slot 4	10
2.4.3	Slot 5	11
2.4.4	Slot 6	12
2.4.5	Slot 7	13
2.5	FID Slots	14
2.5.1	Slot 0	14
2.5.2	Slot 1	15
2.5.3	Slot 2	16
3	Gratings	17
3.1	HEG Arm	17
3.2	MEG Arm	19
A	Summary	21
A.1	Status	21
A.2	Comments	21

1 Front

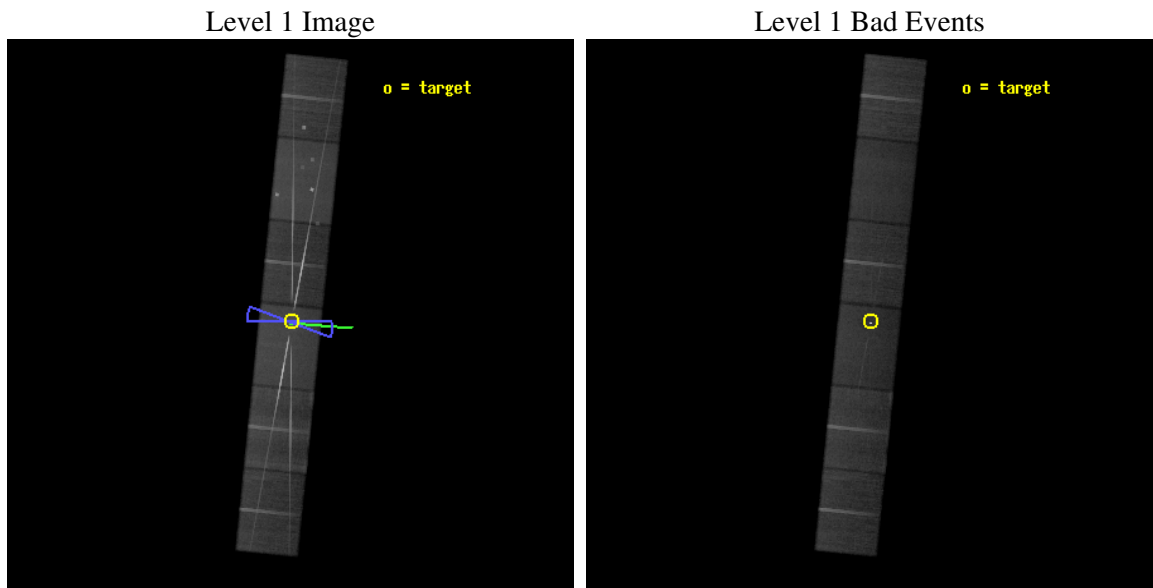
seq_num	400355
obs_id	4572
title	A High Resolution X-ray Spectroscopic Investigation of AC211
observer	Dr Nicholas White
object	AC211
dtcycle	0
cycle	P
ra_targ	322.492917
dec_targ	12.169167
ra_nom	322.49476747639
dec_nom	12.167852269113
roll_nom	95.840780207156
revision	2
ontime	60137.5
livetime	59166.227214054
ontime4	60137.5
ontime5	60137.5
ontime6	60137.5
ontime7	60137.5
ontime8	60137.5
ontime9	60137.5
l2events	1003990



2 OBI

2.1 OBI

2.1.1 Images

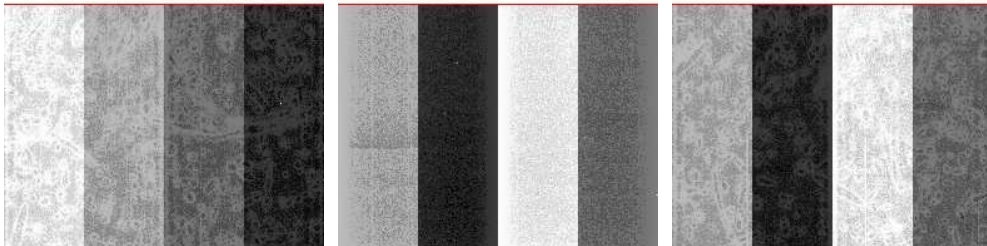


2.1.2 Bias

Chip 4

Chip 5

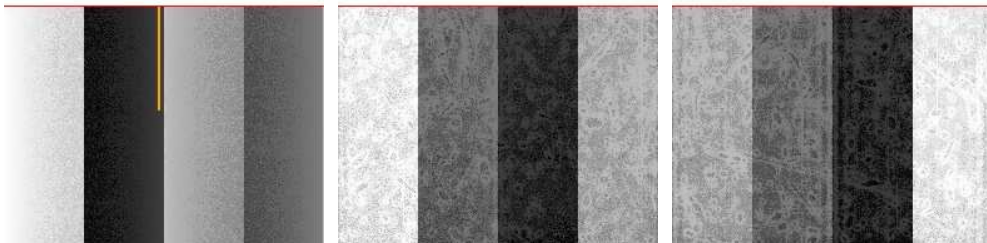
Chip 6



Chip 7

Chip 8

Chip 9



2.1.3 Parameters

obi_num	0
ascdsver	7.6.7.2
caldsver	3.2.2
date	2006-05-25T14:49:54
revision	2

sched_exp_time	60000.000000
ontime	60615.777670413
ontime4	60476.023148715
ontime5	60615.777670413
ontime6	60496.351448774
ontime7	60615.777670413
ontime8	60506.515608788
ontime9	60493.810408771
l1events	2964655

2.1.4 Events

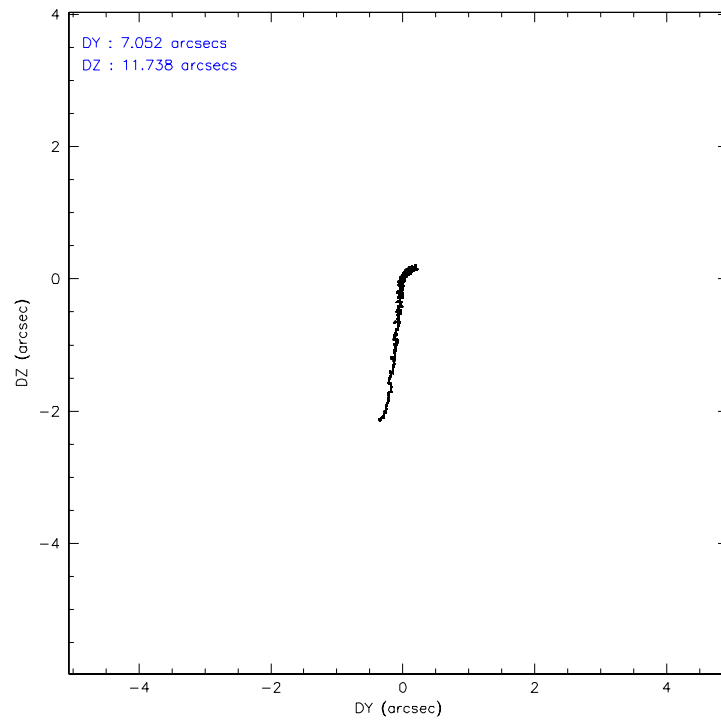
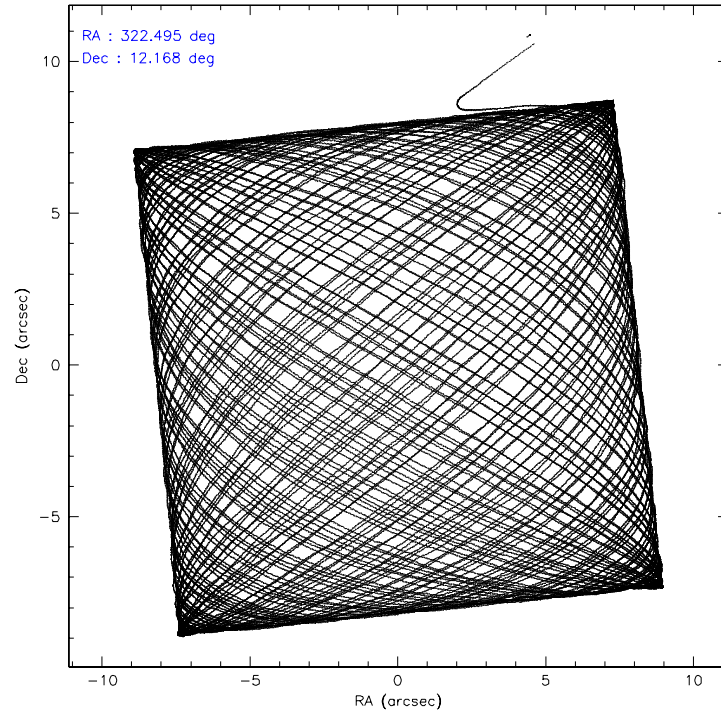
	ccd 4	ccd 5	ccd 6	ccd 7	ccd 8	ccd 9
level 1 events	391166	544464	513030	670961	496415	348619
rejected events	333510	275939	298113	301712	335826	293447
rejected %	85%	50%	58%	44%	67%	84%

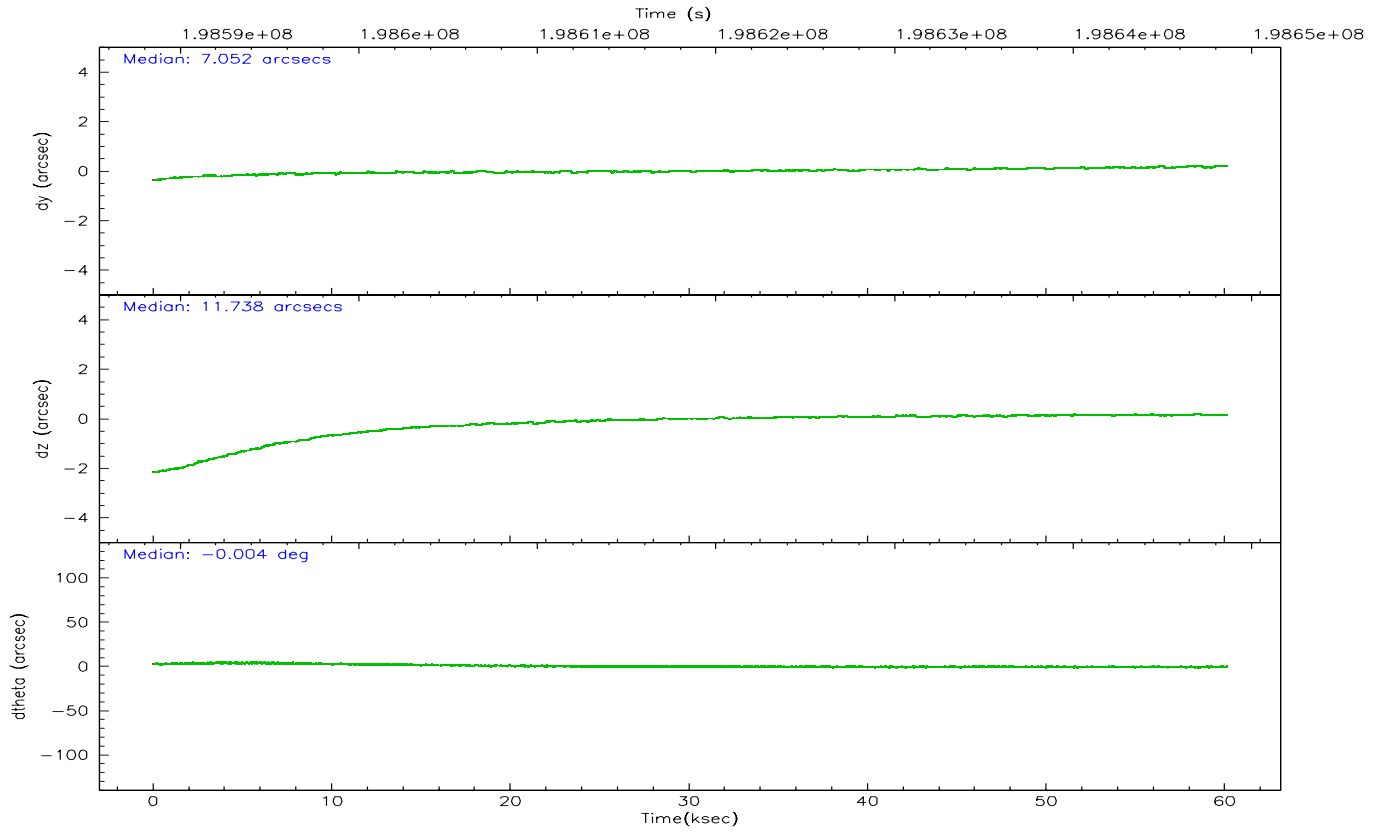
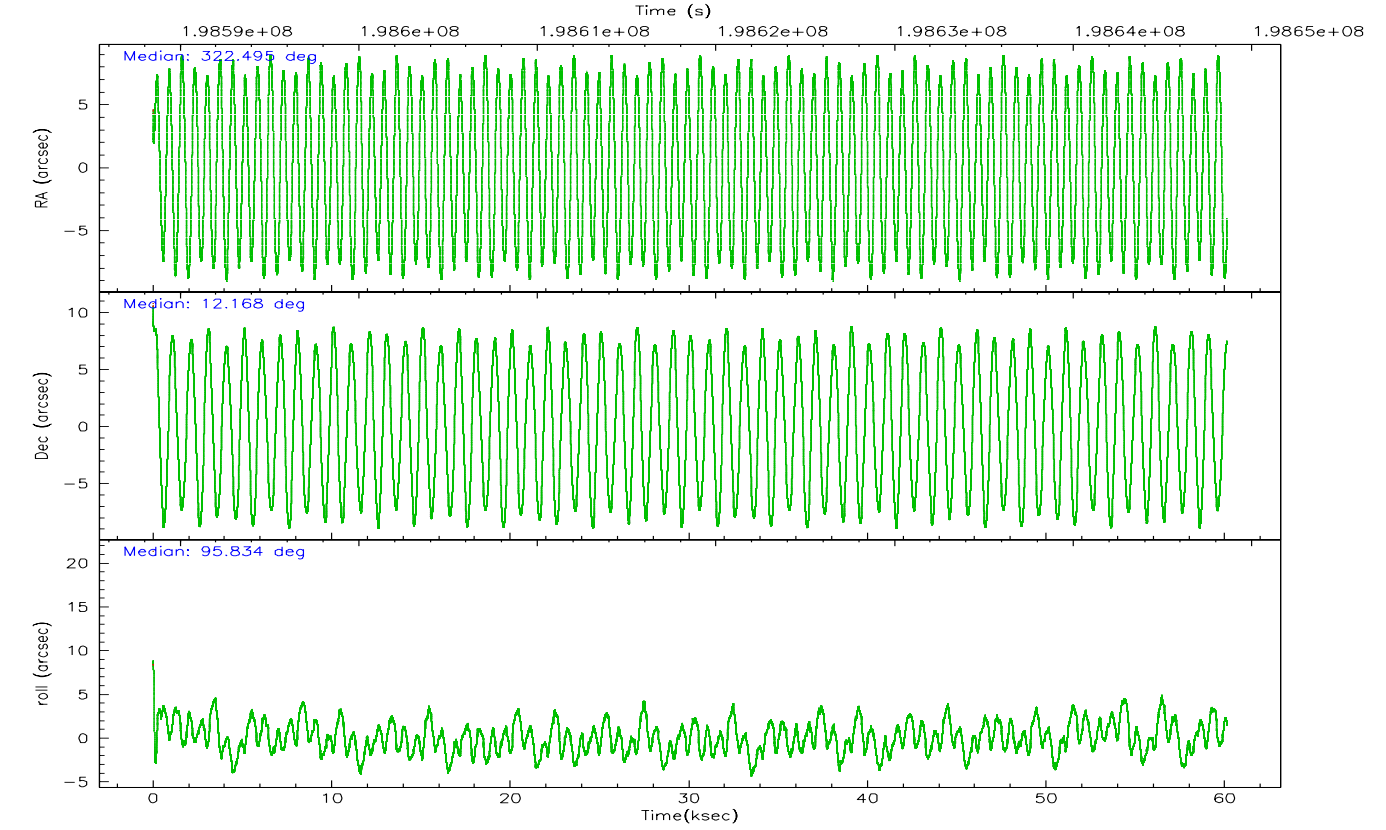
	ccd 4	ccd 5	ccd 6	ccd 7	ccd 8	ccd 9
grade 0 events	31874	41615	152000	48328	86724	28611
	8%	7%	29%	7%	17%	8%
grade 1 events	331	503	793	1095	464	185
	0%	0%	0%	0%	0%	0%
grade 2 events	10012	80590	28671	94915	26657	9310
	2%	14%	5%	14%	5%	2%
grade 3 events	4727	9263	10640	29344	11734	4780
	1%	1%	2%	4%	2%	1%
grade 4 events	4615	8863	10521	29460	11009	4674
	1%	1%	2%	4%	2%	1%
grade 5 events	14243	25530	15761	37611	19764	15780
	3%	4%	3%	5%	3%	4%
grade 6 events	6712	130191	13607	169094	25163	8034
	1%	23%	2%	25%	5%	2%
grade 7 events	318652	247909	281037	261114	314900	277245
	81%	45%	54%	38%	63%	79%

2.2 Compared Parameters

Parameter	Planned	Actual	Parameter	Planned	Actual
Instrument	ACIS	ACIS	Obspar format version number	6	6
Detector	ACIS-456789	ACIS-456789	Obspar file type	PREDICTED	ACTUAL
Grating	HETG	HETG	Obspar update status	NONE	UPDATED
Data mode	FAINT	FAINT	On-chip summing requested	N	N
Observation mode	POINTING	POINTING	Subarray requested	CUSTOM	CUSTOM
Pointing RA	322.511376	322.4947674763857	Subarray start row	1	1
Pointing Dec	12.146011	12.16785226911332	Subarray row count	774	774
Pointing Roll	95.680654	95.84078020715612	Alternating exposures requested	N	N
Roll angle	280.000000	280.000000	Primary exposure time	0.000000	2.5
Roll tolerance	10.000000	10.000000			
Roll constraint allows 180D rotation	Y	Y			
SIM focus pos (mm)	-0.684267	-0.6828225247311905			
SIM defocus (mm)	0	0.001444936568705701			
SIM translation stage pos (mm)	-187.132523	-187.1228876879999			
SIM translation stage offset (mm)	-3	-3.009634895007935			
Observation start time	198588624.184000	198587436.89196			
Observation start date	2004-04-17T11:29:20	2004-04-17T11:10:36			
Observation end time	198648624.184000	198649643.6322			
Observation end date	2004-04-18T04:09:20	2004-04-18T04:27:23			
Read mode	TIMED	TIMED			

2.3 Aspect



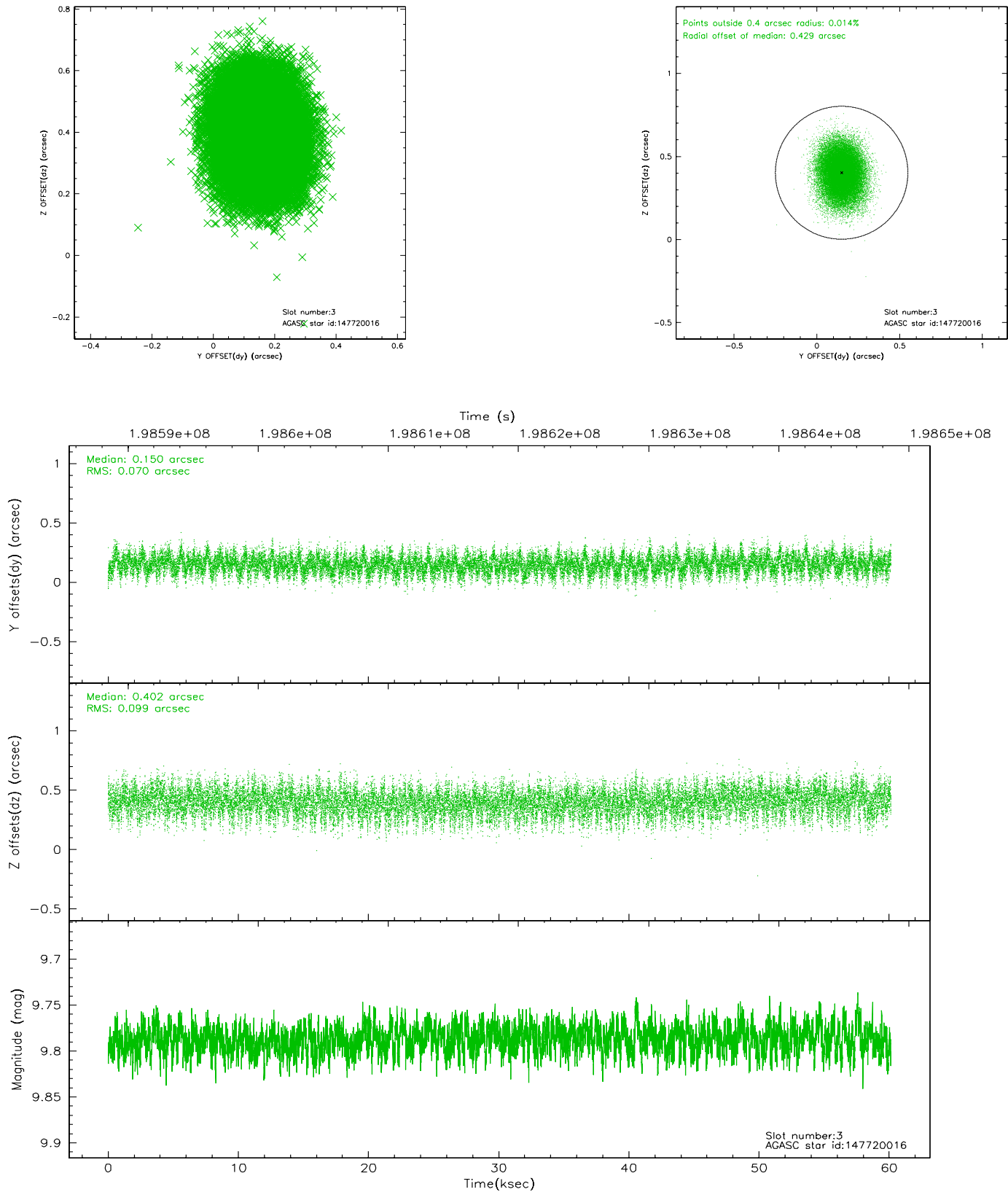


Slot Statistics

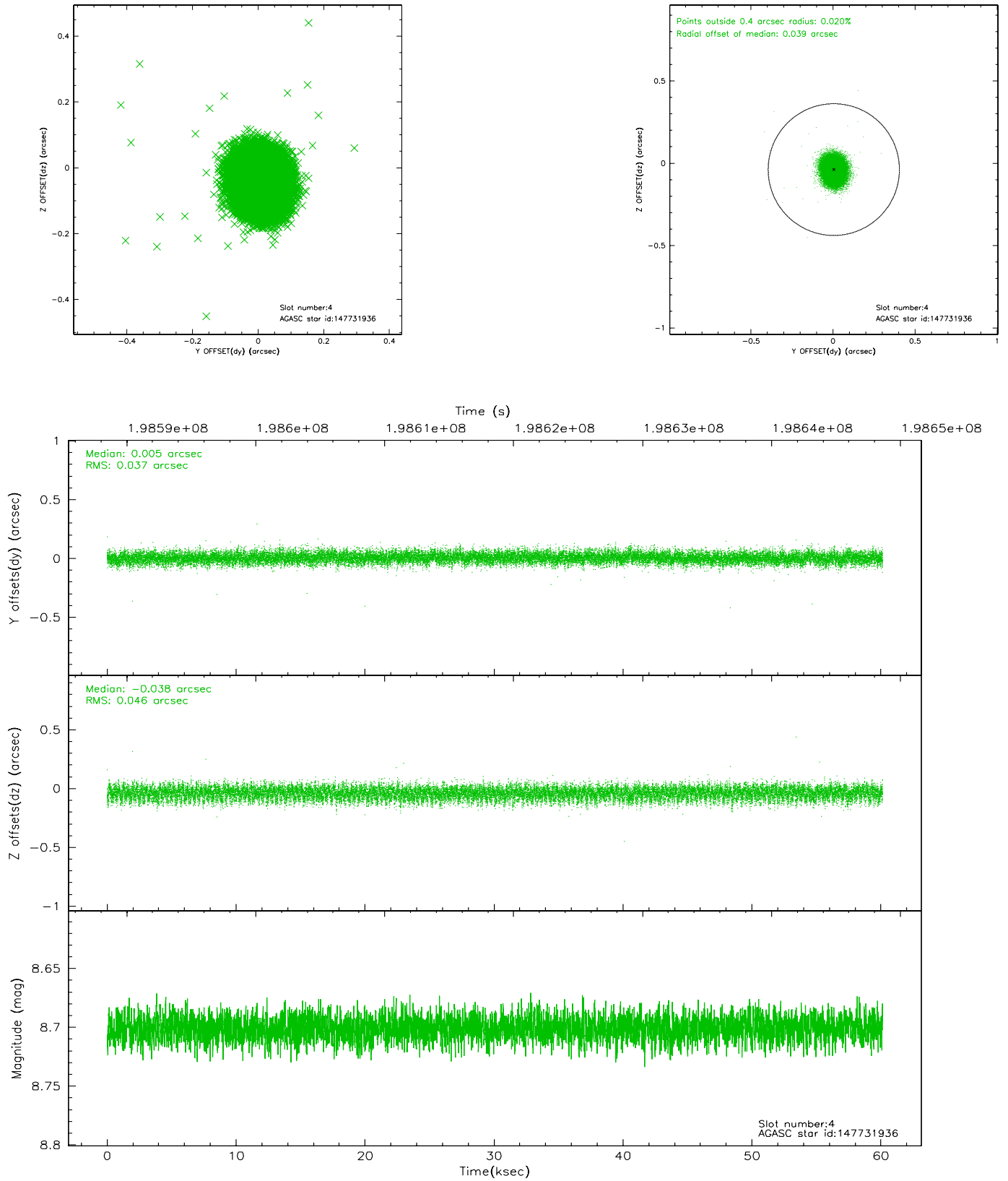
slot	status	id	mag	n_pts	med_dy	med_dz	dr1	dr2	ra	dec	mean_y	mean_z
0	FID	ACIS-S-2	7.09	14668	-0.050	-0.061	0.015	0.024	0.000000	0.000000	-759.65	-1794.97
1	FID	ACIS-S-4	7.19	14667	0.048	0.039	0.019	0.026	0.000000	0.000000	2153.75	113.64
2	FID	ACIS-S-5	7.23	14668	-0.032	0.029	0.013	0.020	0.000000	0.000000	-1812.53	107.25
3	GUIDE	147720016	9.79	29305	0.150	0.402	0.128	0.210	323.177446	11.961153	-891.08	-2268.30
4	GUIDE	147731936	8.70	29329	0.005	-0.038	0.062	0.100	322.421133	12.450297	1121.59	207.34
5	GUIDE	147733624	9.07	29321	-0.120	-0.071	0.084	0.135	321.878010	12.639099	1989.07	2038.34
6	GUIDE	147735992	6.97	29337	-0.003	-0.021	0.050	0.080	322.299566	11.952911	-617.78	810.96
7	GUIDE	147735328	8.66	29329	-0.029	-0.272	0.103	0.156	321.823462	12.214663	488.41	2383.68

2.4 Star Slots

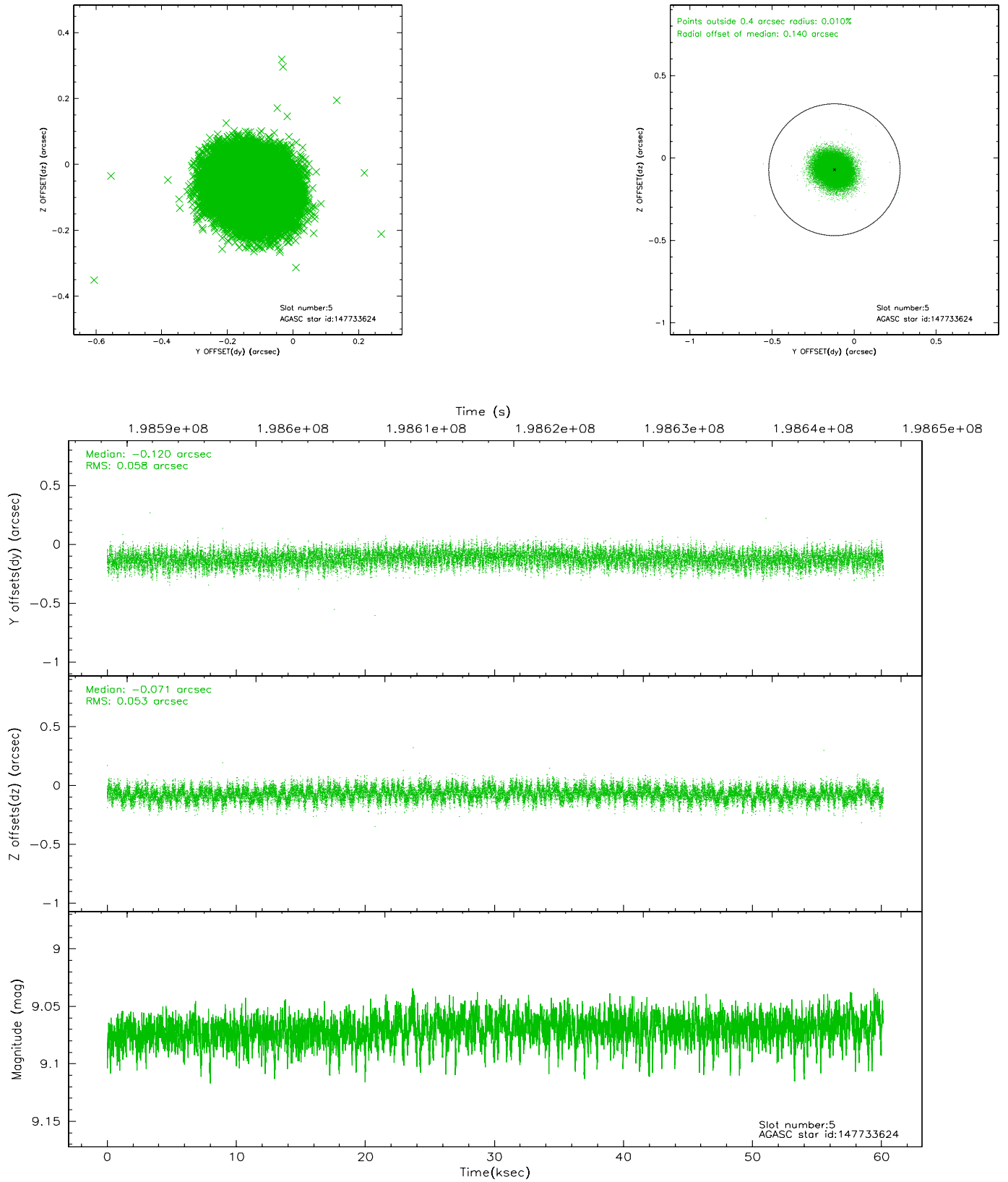
2.4.1 Slot 3



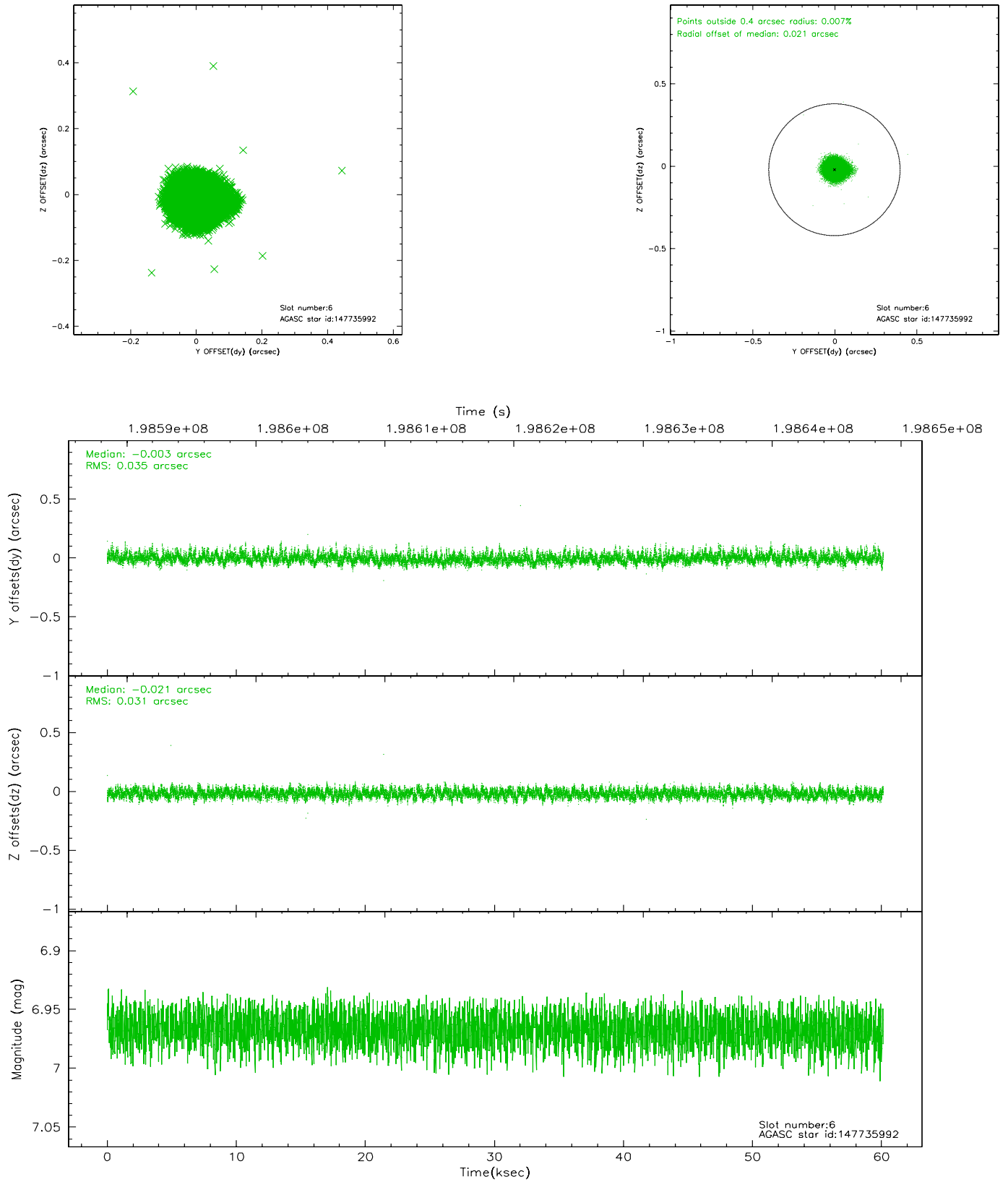
2.4.2 Slot 4



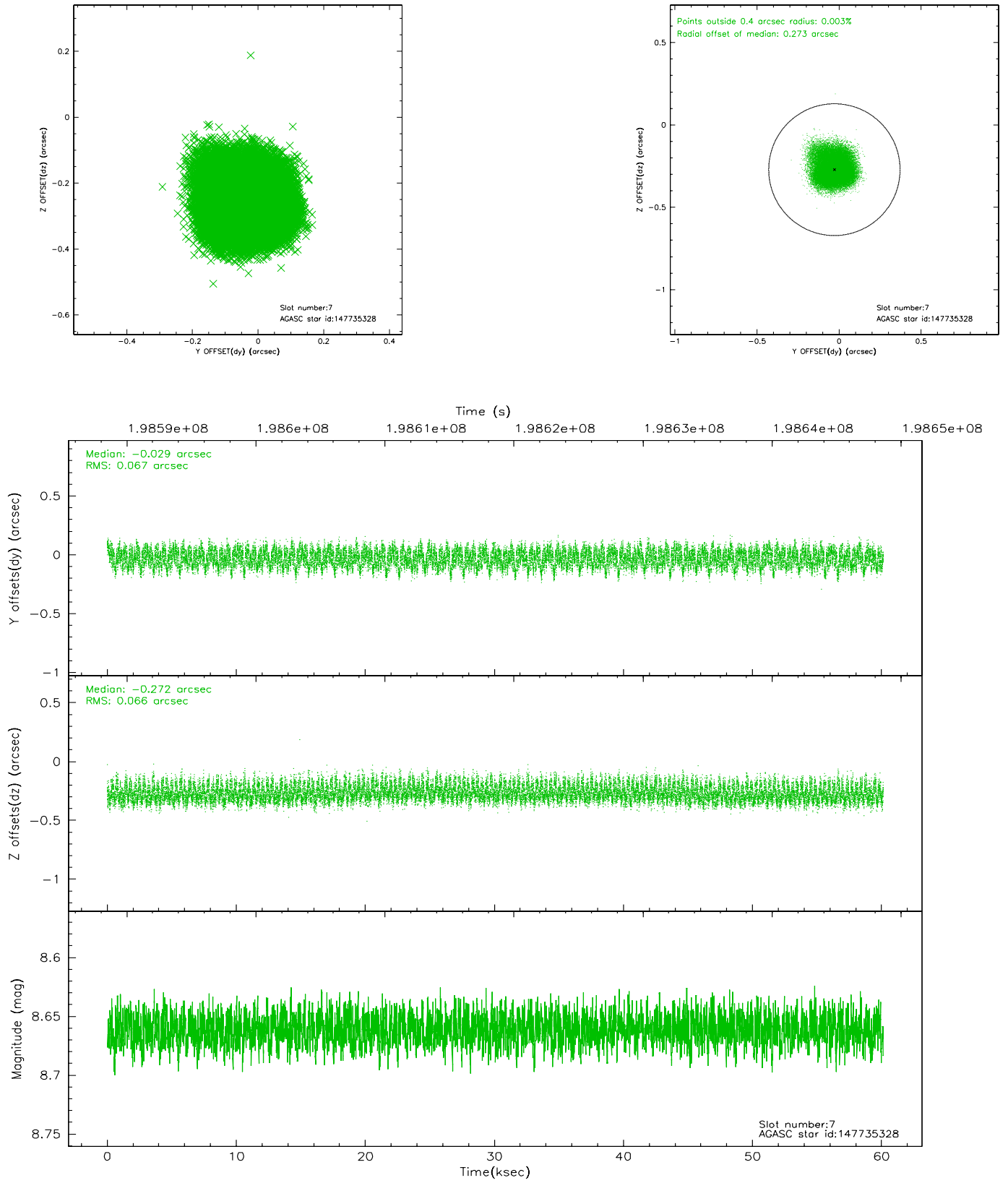
2.4.3 Slot 5



2.4.4 Slot 6

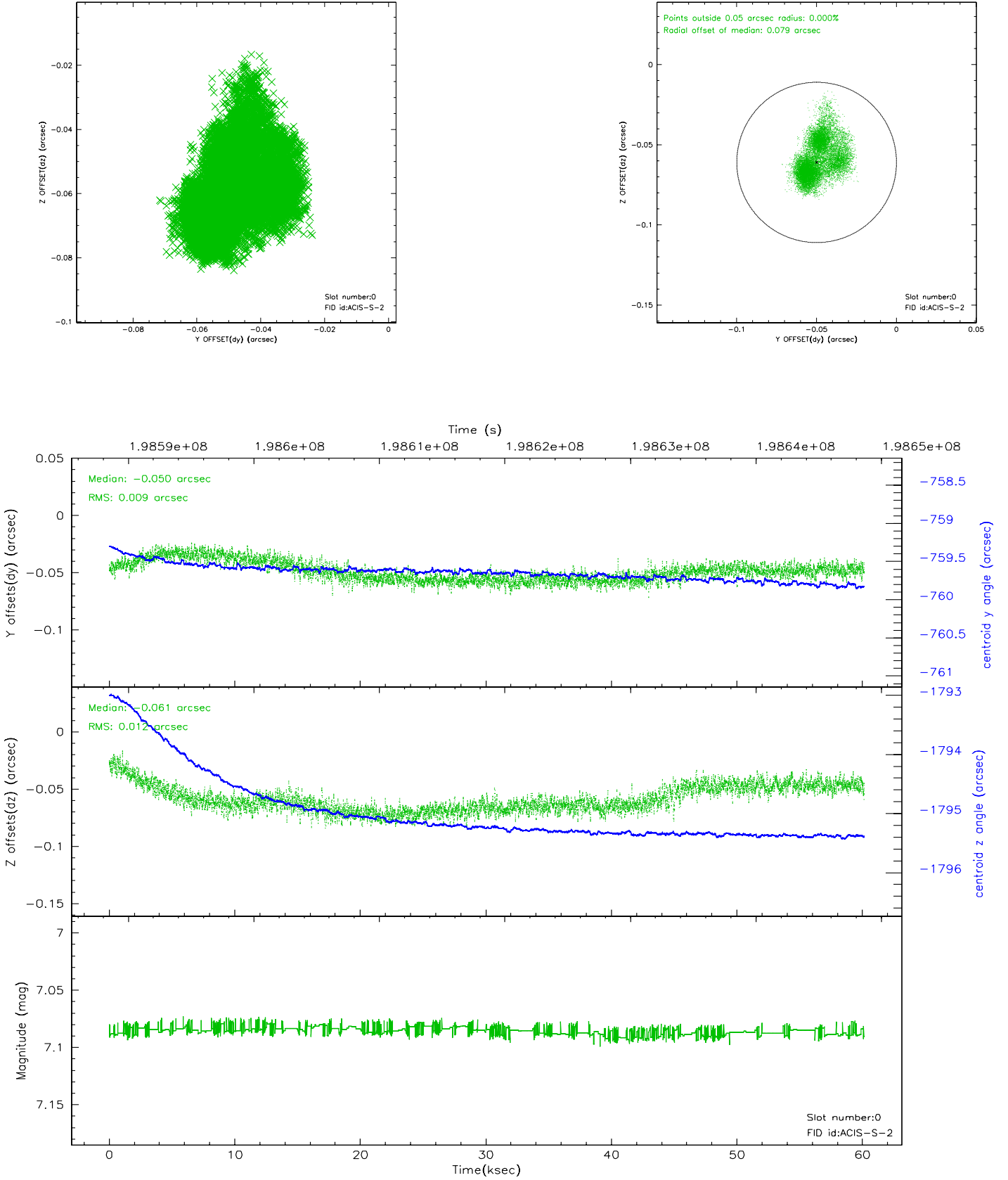


2.4.5 Slot 7

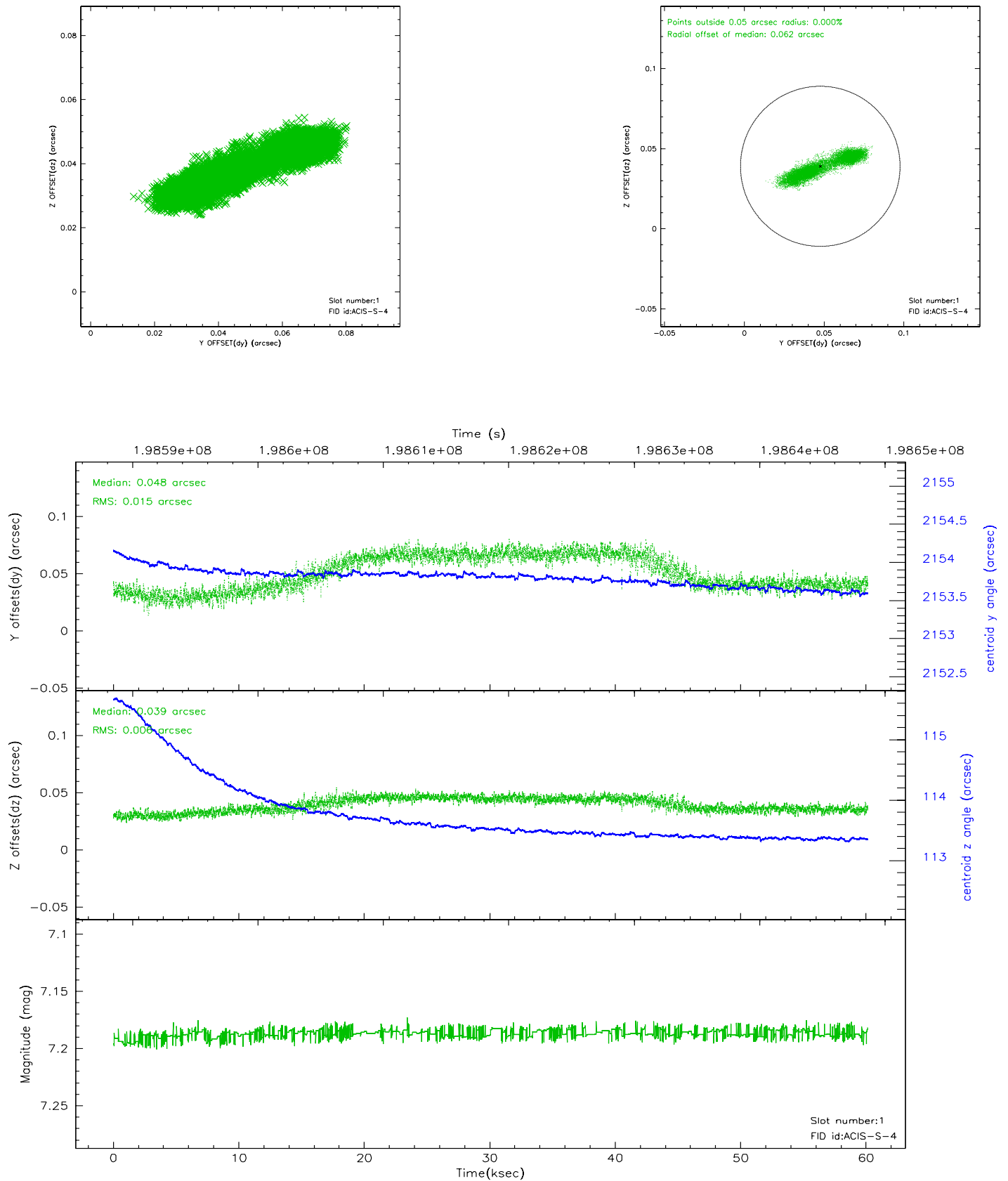


2.5 FID Slots

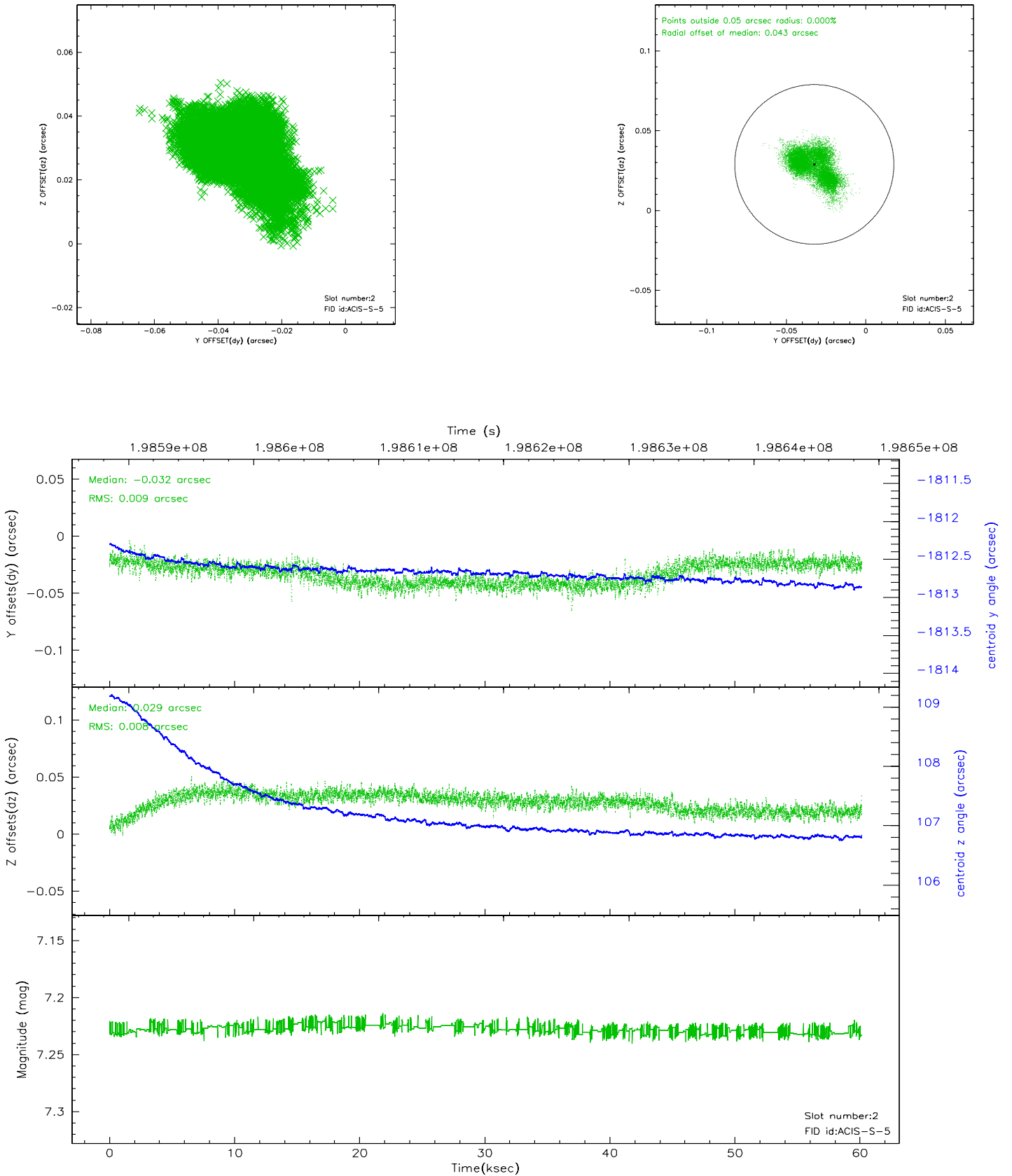
2.5.1 Slot 0



2.5.2 Slot 1

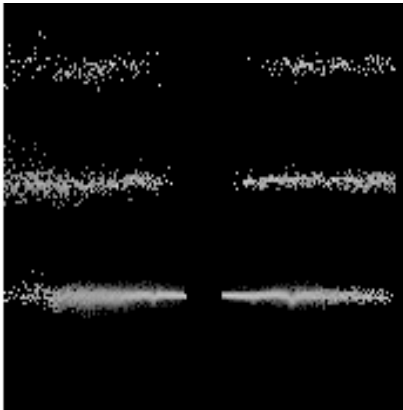


2.5.3 Slot 2

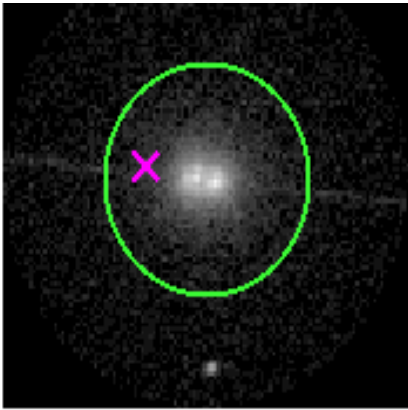


3 Gratings

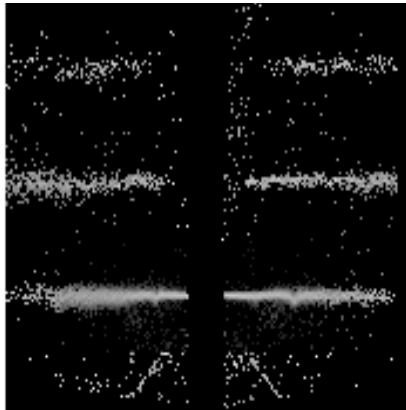
3.1 HEG Arm



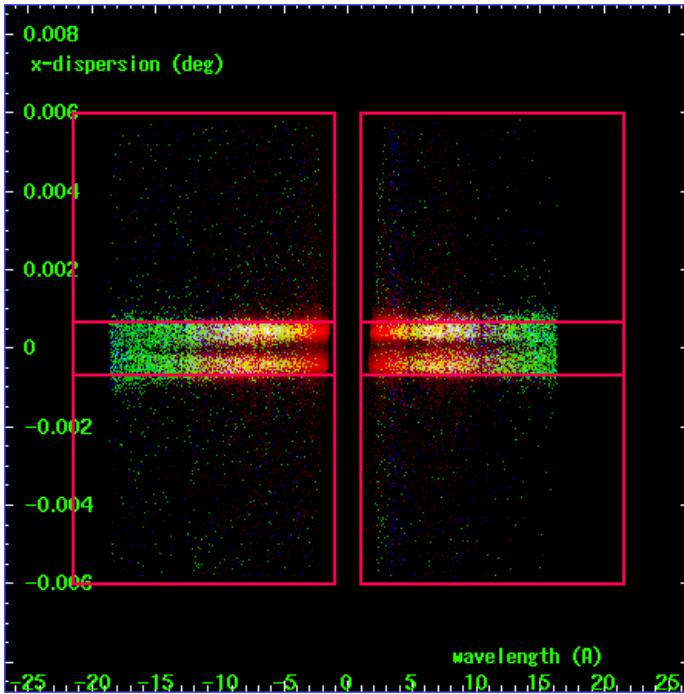
HEG Order Sort 123



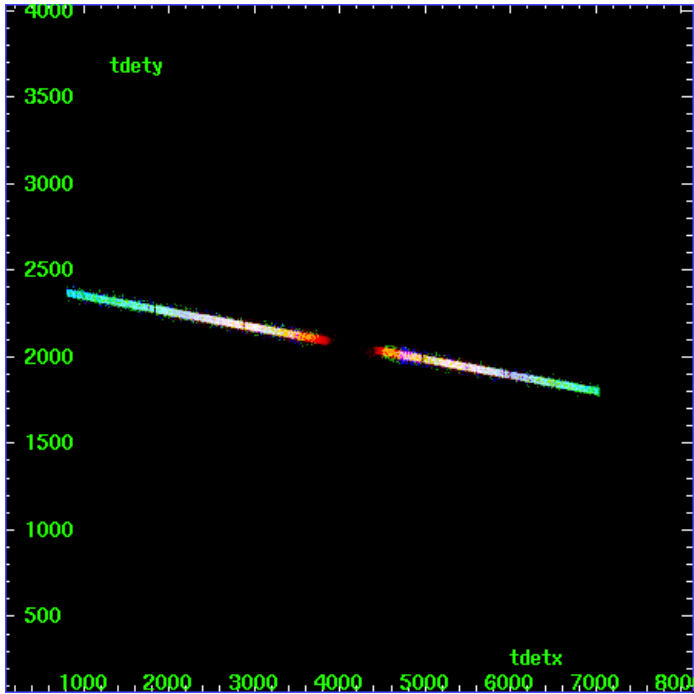
HEG Zero Order



HEG Order Sort ALL

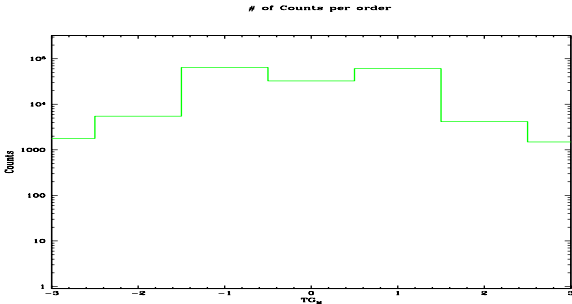


Spot Image HEG

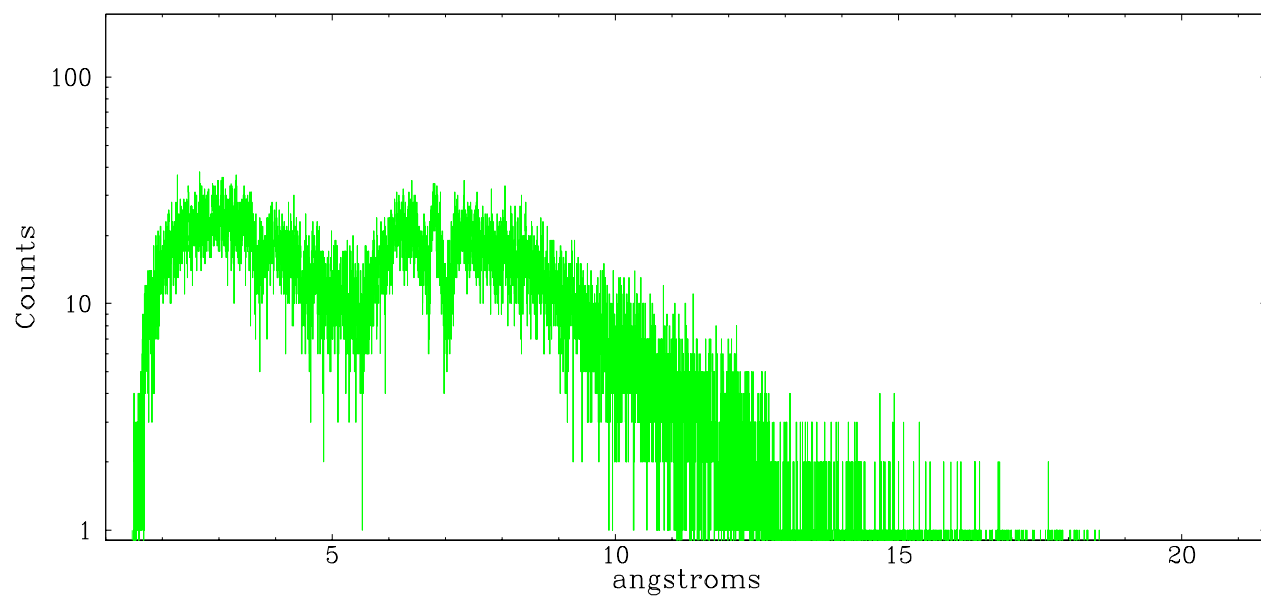


Full Detector HEG

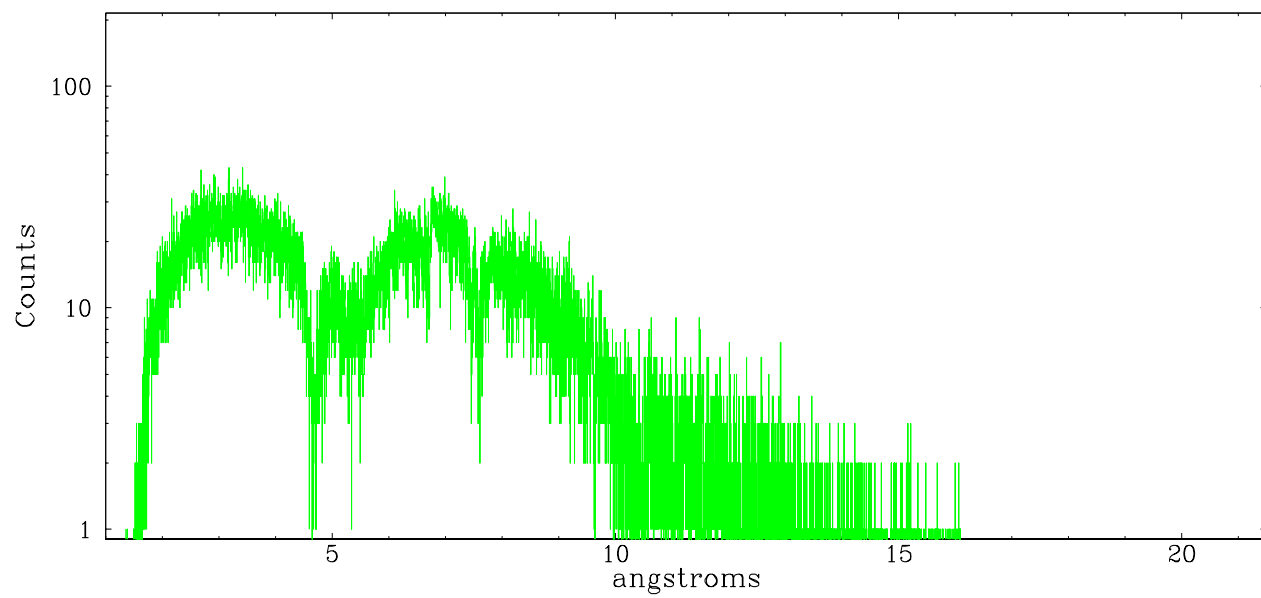
	order -3	order -2	order -1	order 0	order 1	order 2	order 3
Events	1774	5483	64206	32456	60456	4172	1489



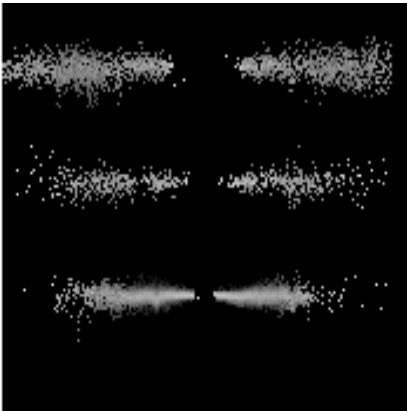
heg order -1



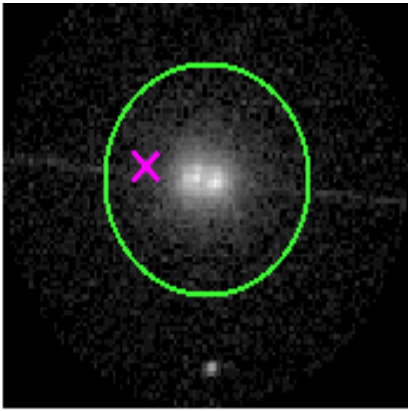
heg order +1



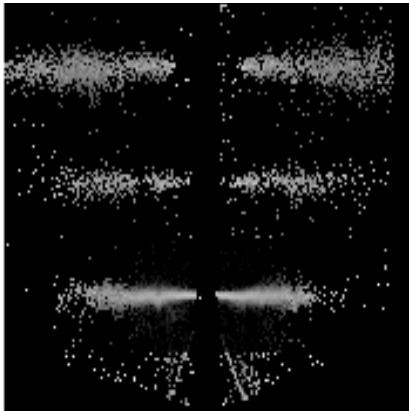
3.2 MEG Arm



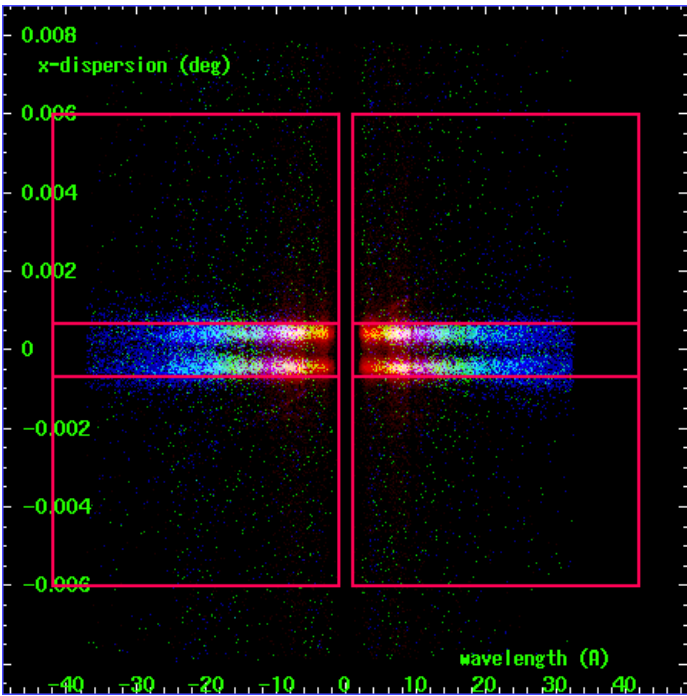
MEG Order Sort 123



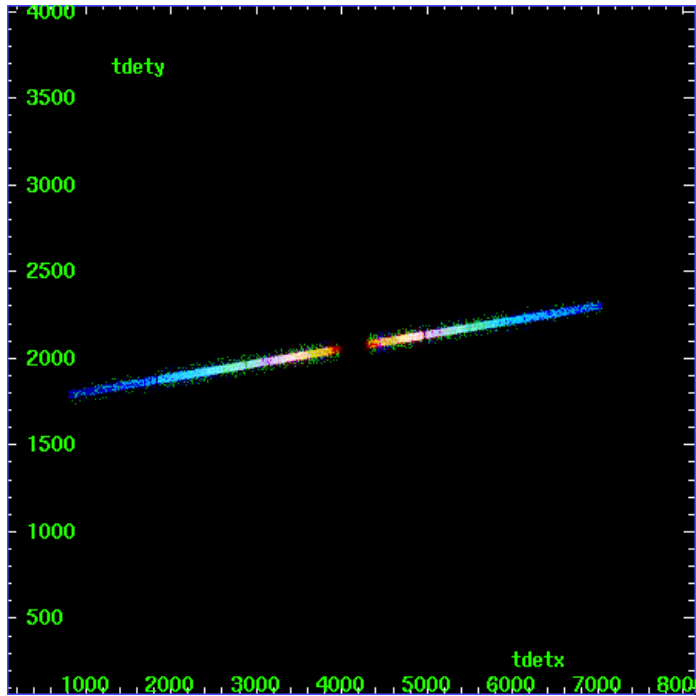
MEG Zero Order



MEG Order Sort ALL

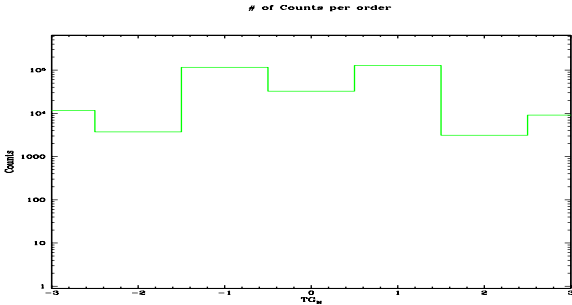


Spot Image MEG

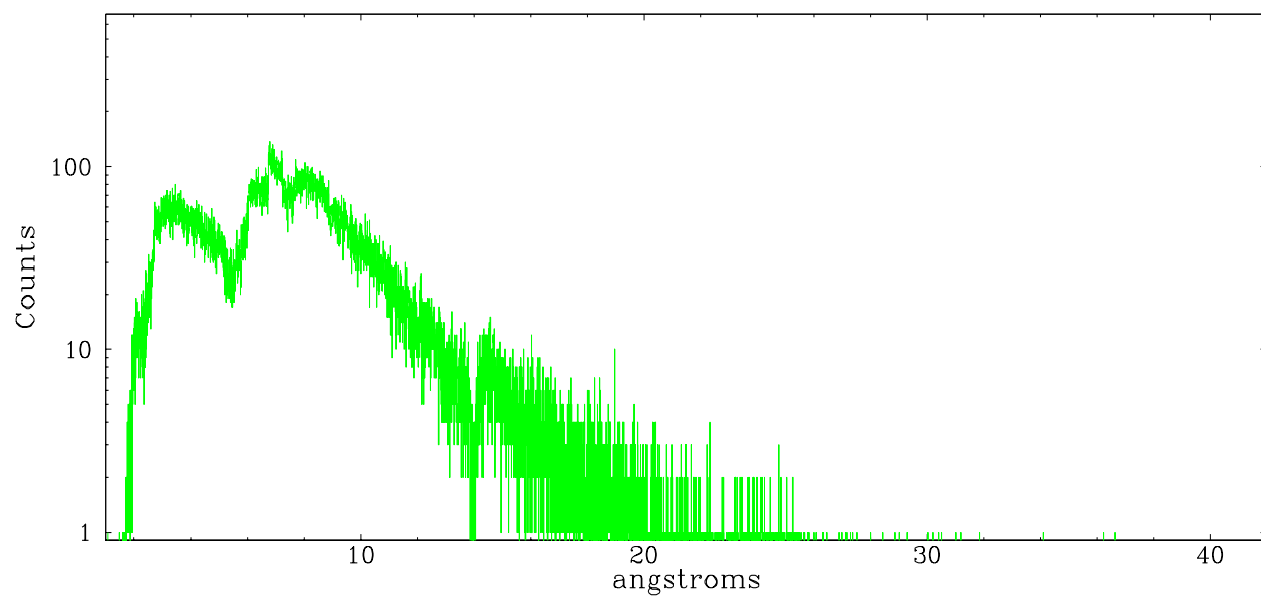


Full Detector MEG

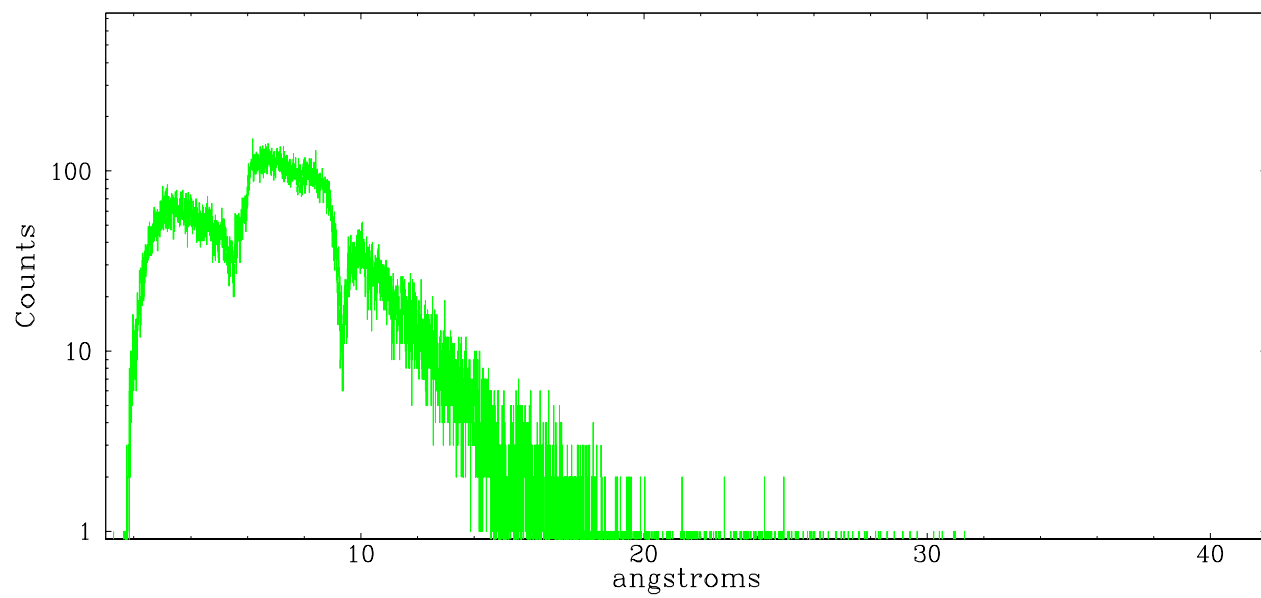
	order -3	order -2	order -1	order 0	order 1	order 2	order 3
Events	11722	3722	116570	32456	127876	3103	9152



meg order -1



meg order +1



A Summary

A.1 Status

V&V Scientist	Beth Sundheim
V&V Date (YYYY-MM-DD)	2006.05.25
V&V Edition	1
V&V Disposition and Status	OK
V&V Charge Time	60.137

A.2 Comments

Roll constraint satisfied.