

# V&V Reference Report

## L2 ASCDS Version : 7.6.7.2

Observation 4567 - L2 Version 001  
Chandra X-Ray Center

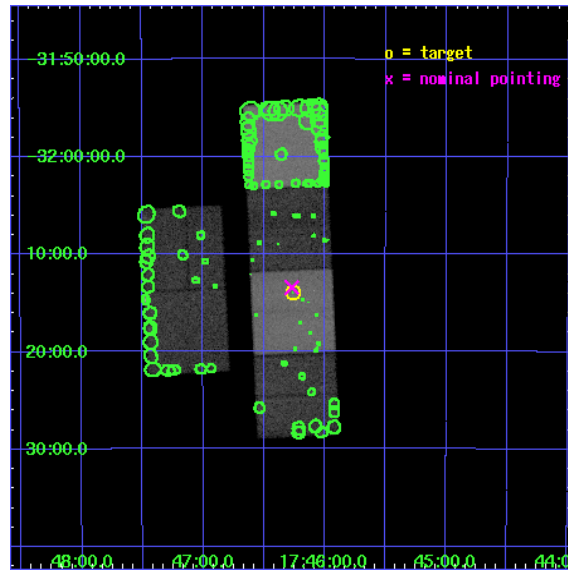
L2 Processing Date : May 27 2006

## Contents

<b>1</b>	<b>Front</b>	<b>2</b>
<b>2</b>	<b>OBI</b>	<b>3</b>
2.1	OBI . . . . .	3
2.1.1	Images . . . . .	3
2.1.2	Bias . . . . .	3
2.1.3	Parameters . . . . .	4
2.1.4	Events . . . . .	4
2.2	Compared Parameters . . . . .	5
2.3	Aspect . . . . .	6
2.4	Star Slots . . . . .	9
2.4.1	Slot 3 . . . . .	9
2.4.2	Slot 4 . . . . .	10
2.4.3	Slot 5 . . . . .	11
2.4.4	Slot 6 . . . . .	12
2.4.5	Slot 7 . . . . .	13
2.5	FID Slots . . . . .	14
2.5.1	Slot 0 . . . . .	14
2.5.2	Slot 1 . . . . .	15
2.5.3	Slot 2 . . . . .	16
<b>3</b>	<b>Point Sources</b>	<b>17</b>
<b>A</b>	<b>Summary</b>	<b>18</b>
A.1	Status . . . . .	18
A.2	Comments . . . . .	18

# 1 Front

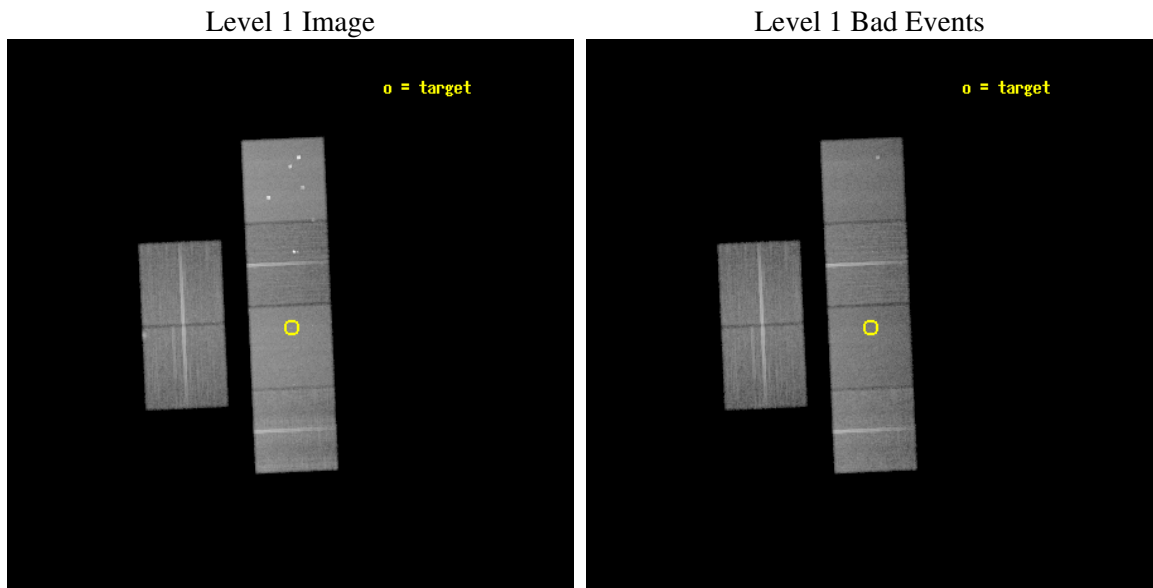
seq_num	400350
obs_id	4567
title	X-Ray Jets in Microquasars
observer	Dr Stephane Corbel
object	H1743-322
dtcycle	0
cycle	P
ra_targ	266.565
dec_targ	-32.2333
ra_nom	266.56751265292
dec_nom	-32.223865352498
roll_nom	87.457970725287
revision	2
ontime	40550.399848938
livetime	40036.926269531
ontime2	40547.158878654
ontime3	40540.676898271
ontime5	40550.399848938
ontime6	40550.399848938
ontime7	40550.399848938
ontime8	40550.399848938
l2events	446747



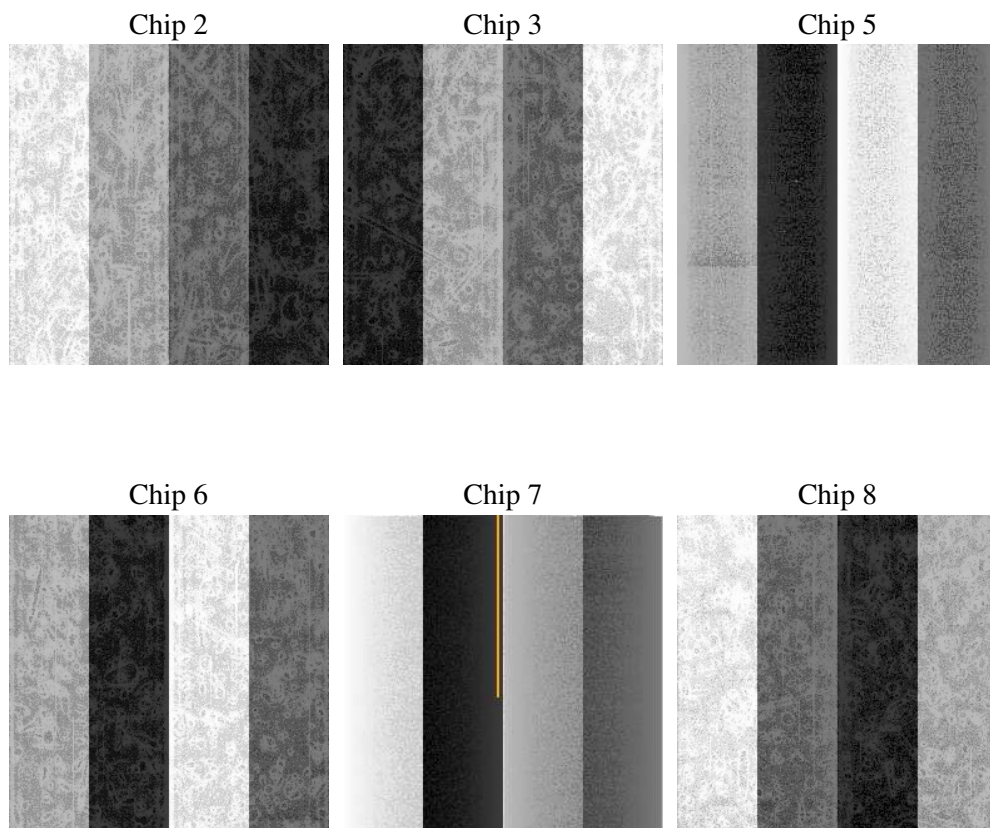
## 2 OBI

### 2.1 OBI

#### 2.1.1 Images



#### 2.1.2 Bias



### 2.1.3 Parameters

obi_num	0
ascdsver	7.6.7.2
caldsver	3.2.2
date	2006-05-27T04:47:43
revision	2

sched_exp_time	40400.000000
ontime	40557.906891882
ontime2	40554.665871769
ontime3	40551.424931377
ontime5	40561.147882044
ontime6	40561.147882044
ontime7	40557.906891882
ontime8	40561.147882044
l1events	2008922

### 2.1.4 Events

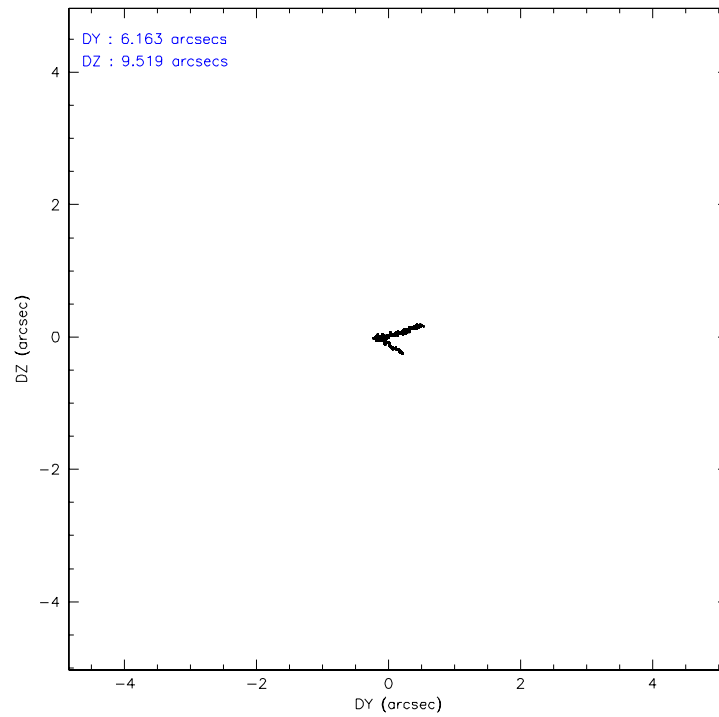
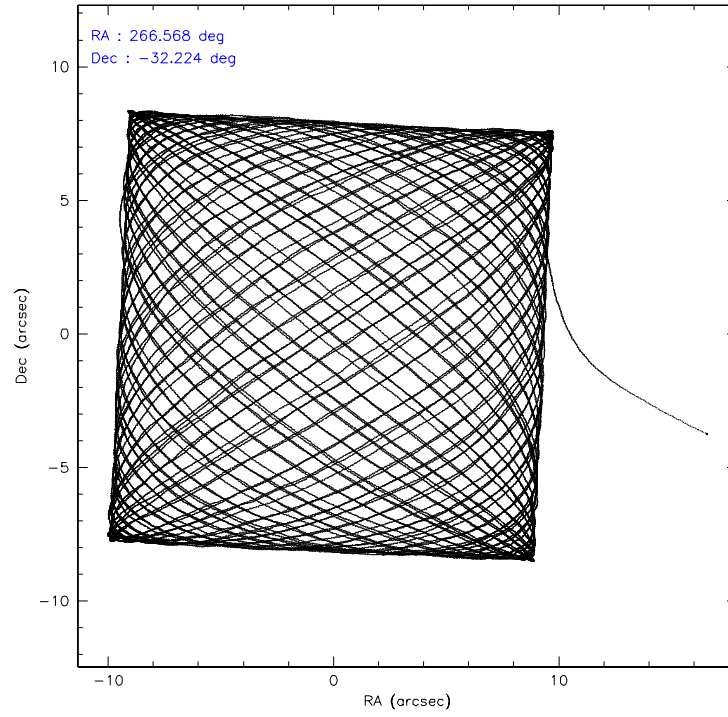
	ccd 2	ccd 3	ccd 5	ccd 6	ccd 7	ccd 8
level 1 events	281248	276741	426852	287869	380924	355288
rejected events	246140	240983	233187	247303	236030	277548
rejected %	87%	87%	54%	85%	61%	78%

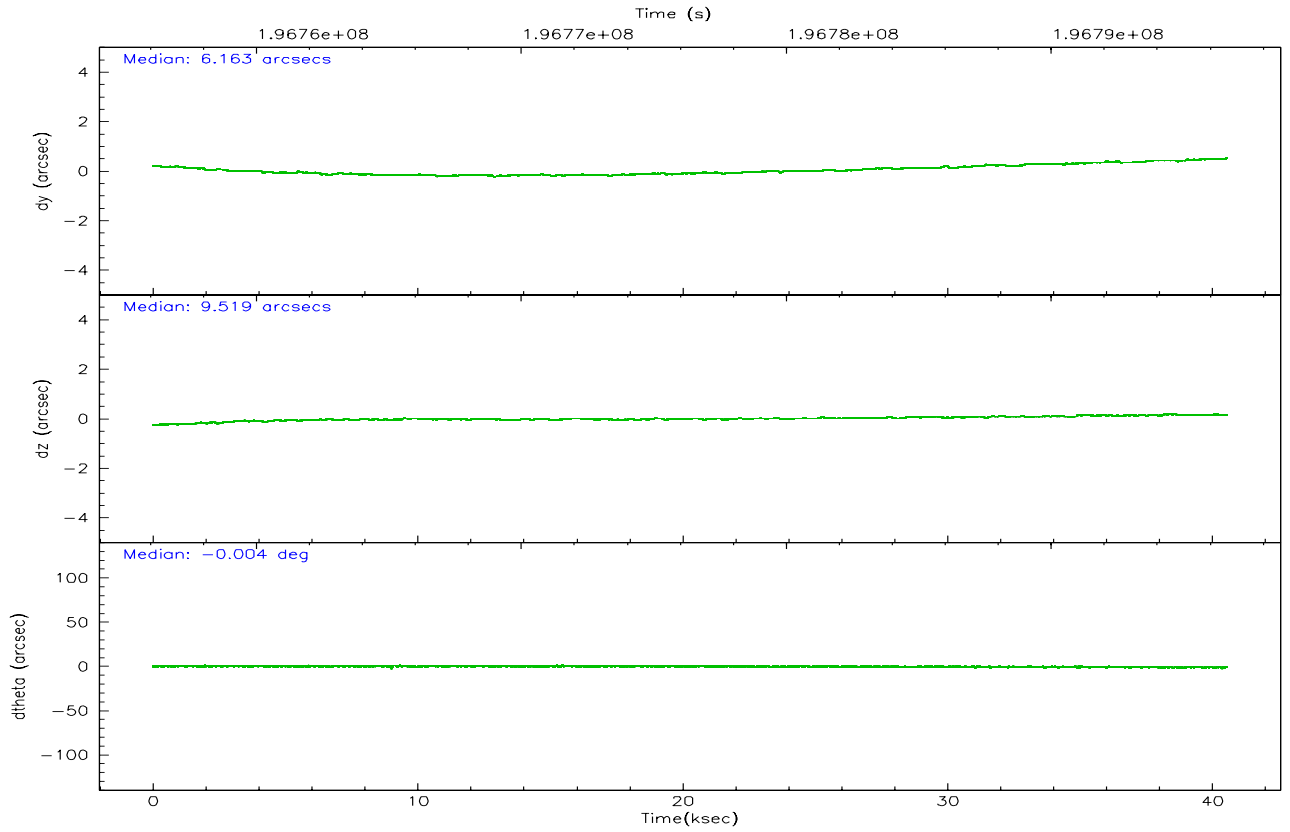
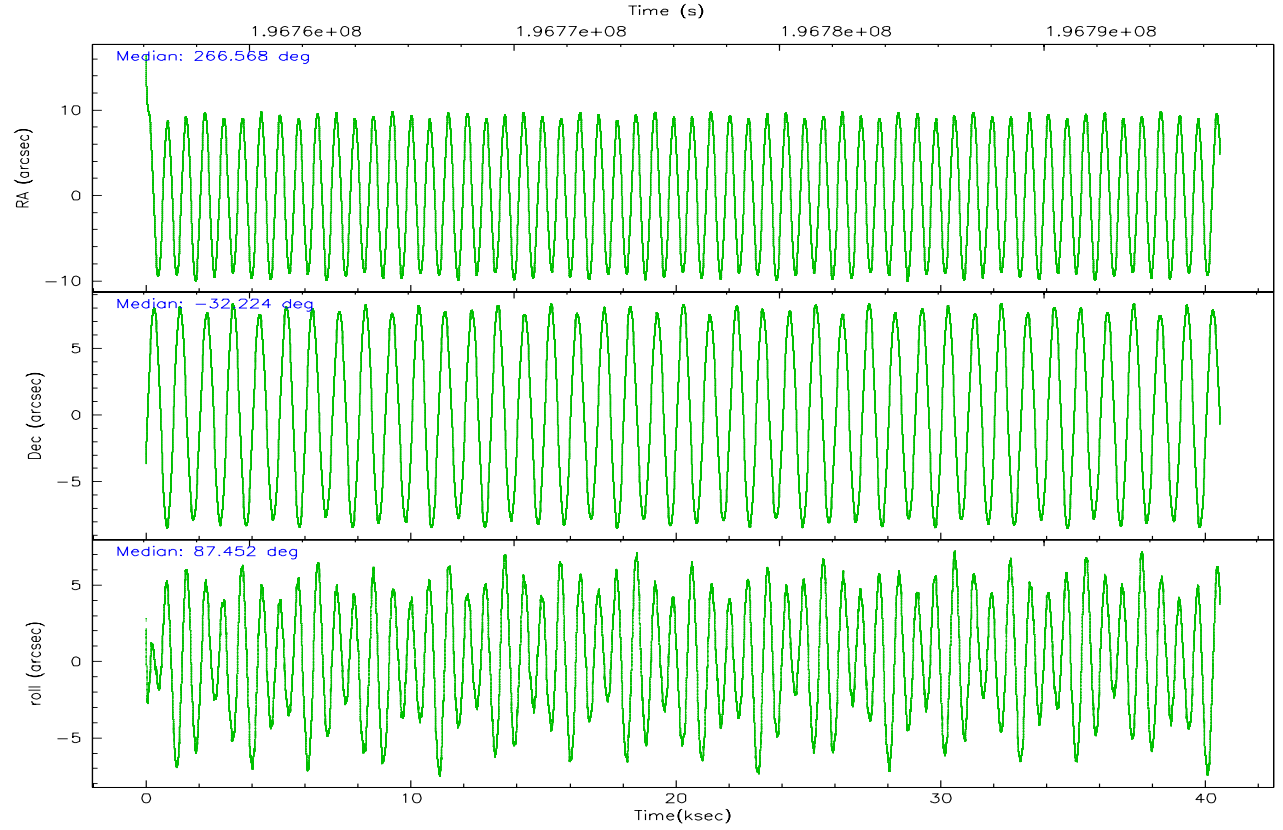
	ccd 2	ccd 3	ccd 5	ccd 6	ccd 7	ccd 8
grade 0 events	16048	16942	23188	19431	8151	25589
	5%	6%	5%	6%	2%	7%
grade 1 events	177	169	1089	245	257	225
	0%	0%	0%	0%	0%	0%
grade 2 events	6957	6529	57796	7546	36257	16697
	2%	2%	13%	2%	9%	4%
grade 3 events	3246	3274	4058	3459	7294	8087
	1%	1%	0%	1%	1%	2%
grade 4 events	3214	3319	3871	3310	7191	7611
	1%	1%	0%	1%	1%	2%
grade 5 events	11221	12290	19411	12889	25015	16735
	3%	4%	4%	4%	6%	4%
grade 6 events	5651	5708	104782	6827	86021	19764
	2%	2%	24%	2%	22%	5%
grade 7 events	234734	228510	212657	234162	210738	260580
	83%	82%	49%	81%	55%	73%

## 2.2 Compared Parameters

Parameter	Planned	Actual	Parameter	Planned	Actual
Instrument	ACIS	ACIS	Obspar format version number	6	6
Detector	ACIS-235678	ACIS-235678	Obspar file type	PREDICTED	ACTUAL
Grating	NONE	NONE	Obspar update status	NONE	UPDATED
Data mode	FAINT	FAINT	On-chip summing requested	N	N
Observation mode	POINTING	POINTING	Subarray requested	NONE	NONE
Pointing RA	266.582731	266.5675126529213	Alternating exposures requested	N	N
Pointing Dec	-32.247862	-32.22386535249829	Primary exposure time	0.000000	3.2
Pointing Roll	87.309466	87.45797072528747			
Window start time	195955264.184000	195955264.184000			
Window stop time	197078464.184000	197078464.184000			
SIM focus pos (mm)	-0.684267	-0.6828225247311905			
SIM defocus (mm)	0	0.001444936568705701			
SIM translation stage pos (mm)	-190.132523	-190.1400660498719			
SIM translation stage offset (mm)	0	0.00754346686406393			
Observation start time	196756249.184000	196755189.34889			
Observation start date	2004-03-27T06:29:45	2004-03-27T06:13:09			
Observation end time	196796649.184000	196797309.16324			
Observation end date	2004-03-27T17:43:05	2004-03-27T17:55:09			
Read mode	TIMED	TIMED			

## 2.3 Aspect





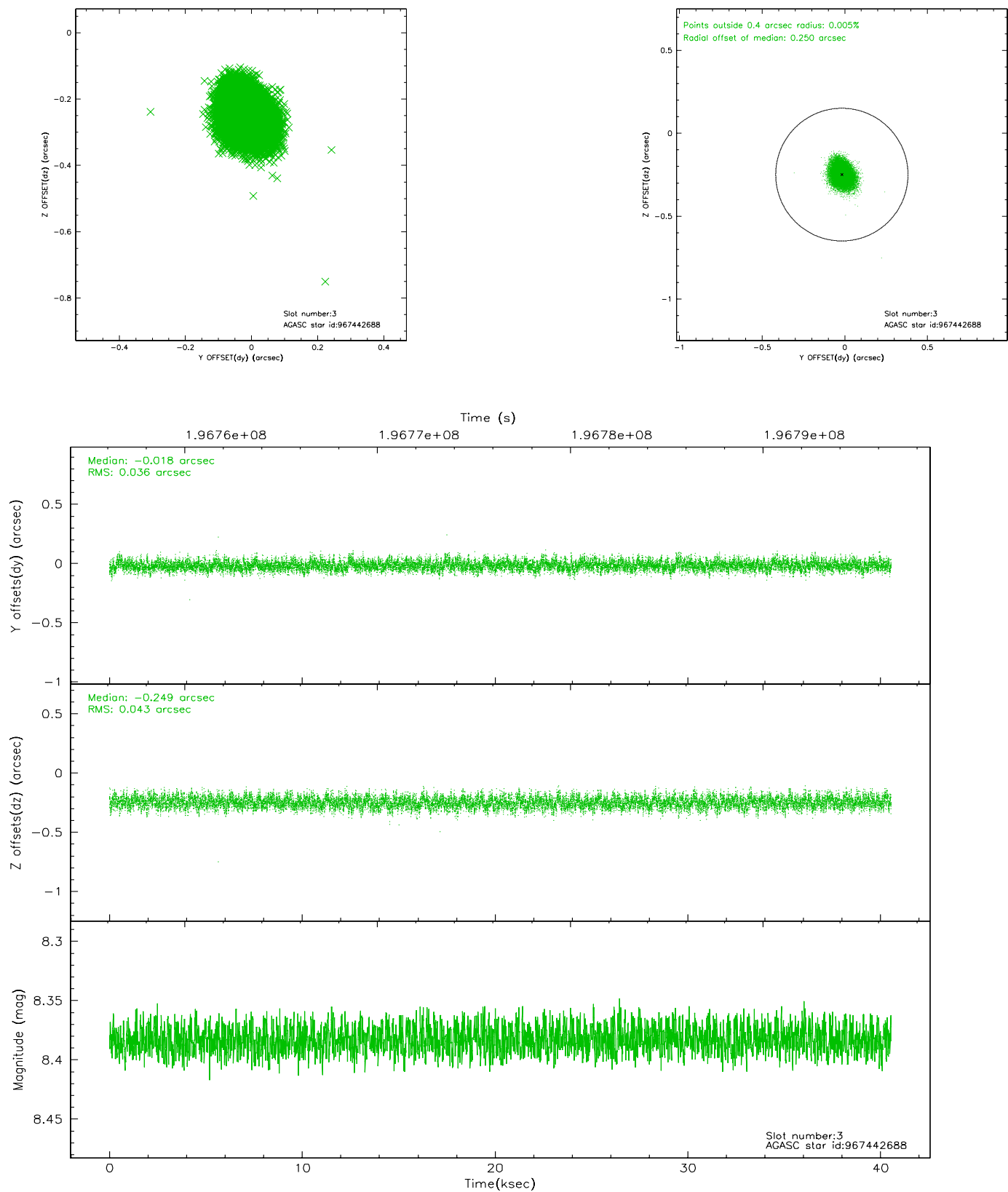
### Slot Statistics

slot	status	id	mag	n_pts	med_dy	med_dz	dr1	dr2	ra	dec	mean_y	mean_z
0	FID	ACIS-S-2	7.10	9891	-0.047	-0.013	0.007	0.012	0.000000	0.000000	-758.97	-1730.78
1	FID	ACIS-S-4	7.20	9891	0.050	0.027	0.006	0.010	0.000000	0.000000	2154.38	177.75
2	FID	ACIS-S-5	7.23	9891	-0.034	-0.004	0.006	0.010	0.000000	0.000000	-1811.80	171.37
3	GUIDE	967442688	8.38	19778	-0.018	-0.249	0.059	0.097	266.096113	-32.373763	-525.52	1456.39
4	GUIDE	967450832	9.10	19732	-0.093	-0.206	0.084	0.136	266.078096	-31.879979	1246.83	1603.18
5	GUIDE	967446352	7.75	19779	0.098	-0.013	0.063	0.101	267.069988	-32.671157	-1455.92	-1546.45
6	GUIDE	967447616	9.30	19770	0.137	0.254	0.090	0.144	267.260141	-32.889782	-2218.34	-2154.27
7	GUIDE	967451816	9.26	19777	-0.123	0.213	0.085	0.138	267.266669	-31.901374	1337.48	-2029.38

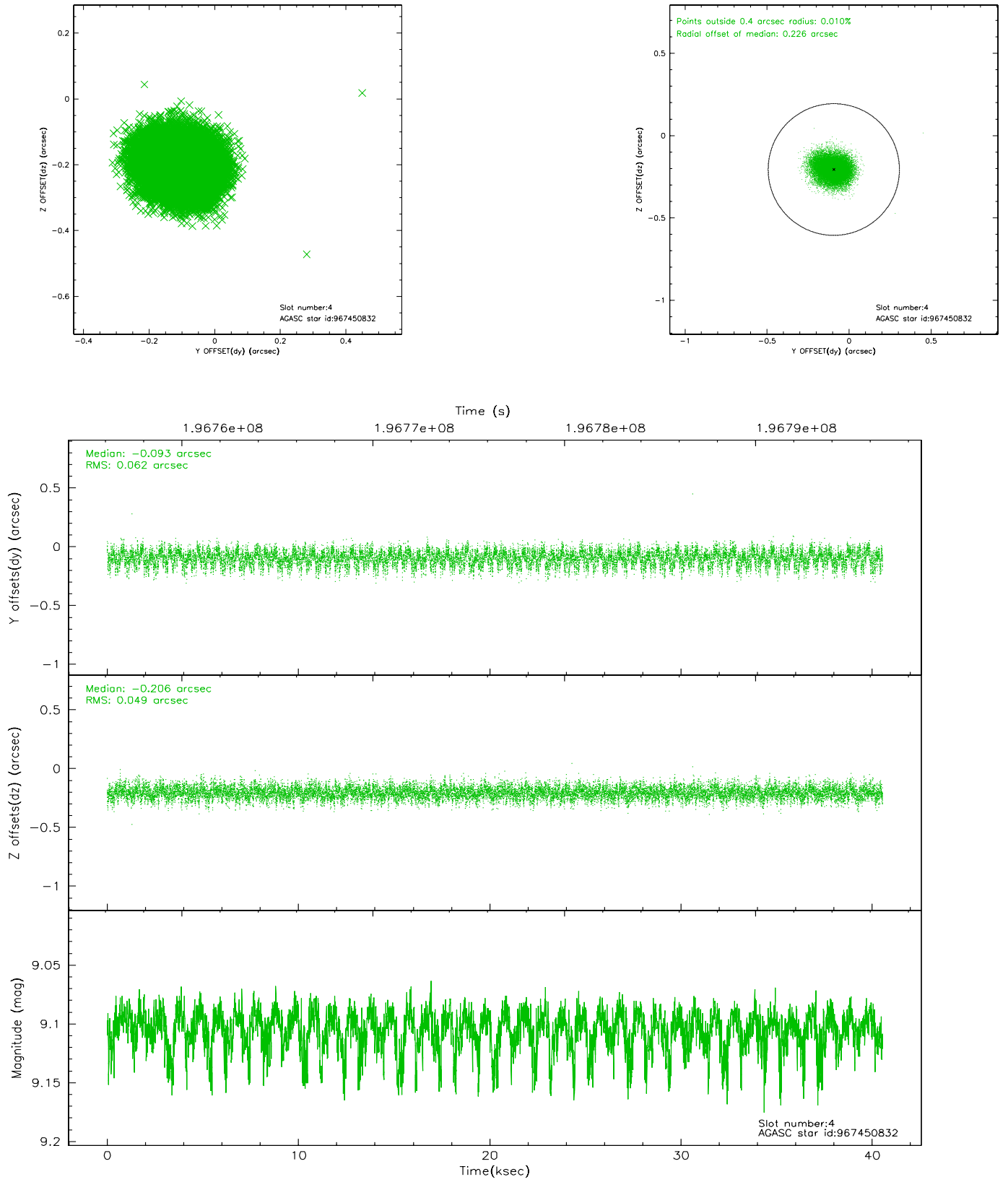


## 2.4 Star Slots

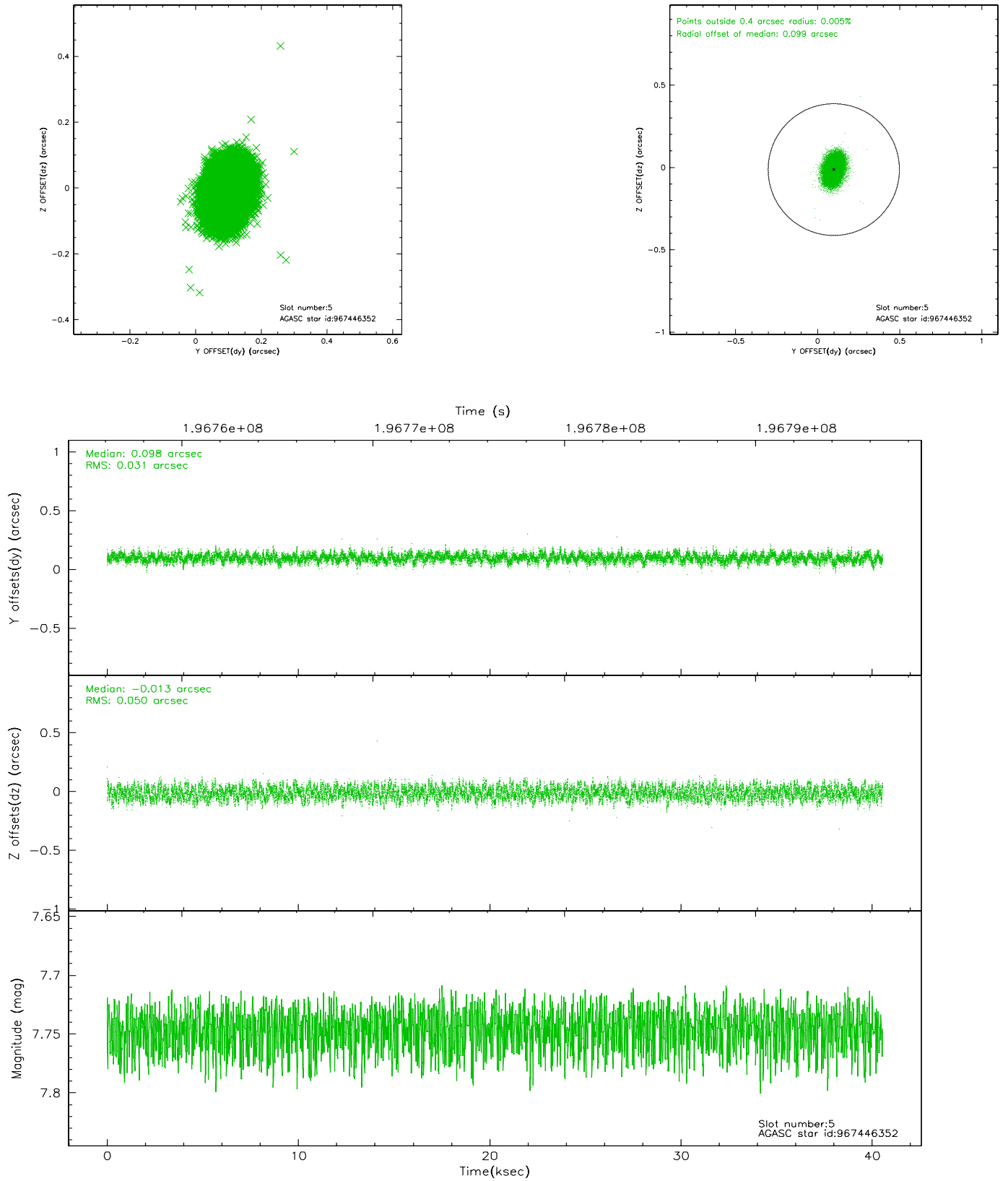
### 2.4.1 Slot 3



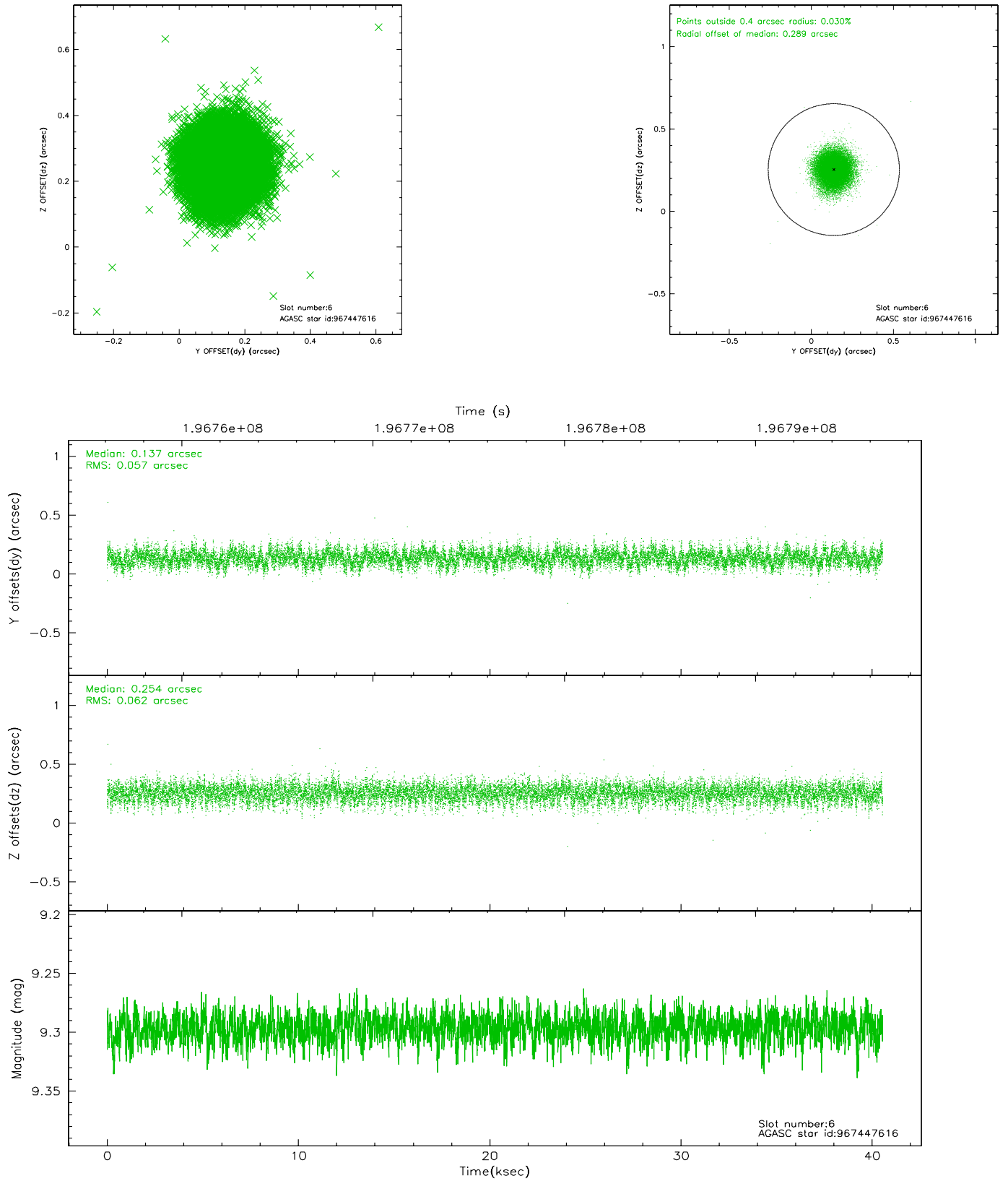
## 2.4.2 Slot 4



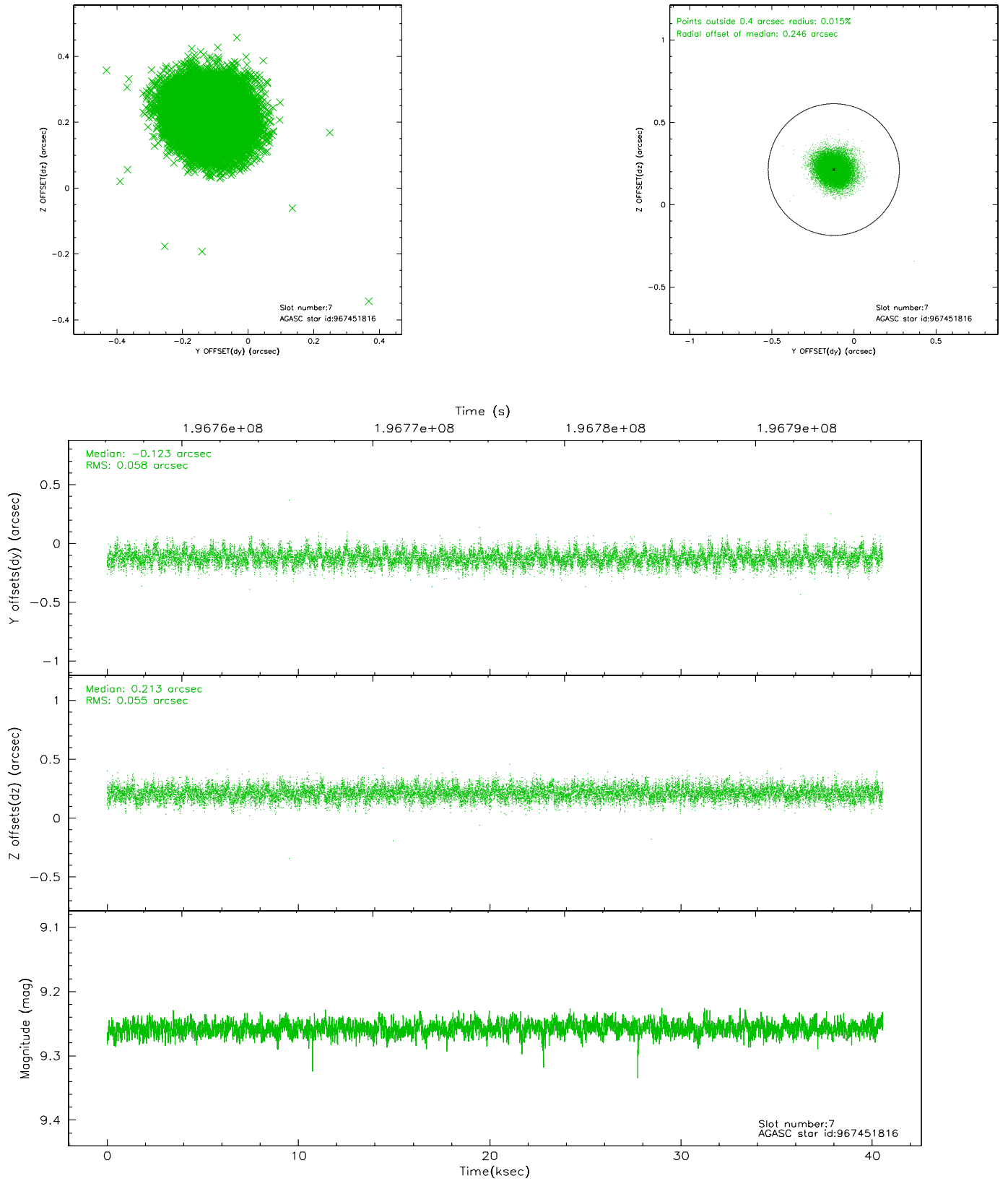
### 2.4.3 Slot 5



## 2.4.4 Slot 6

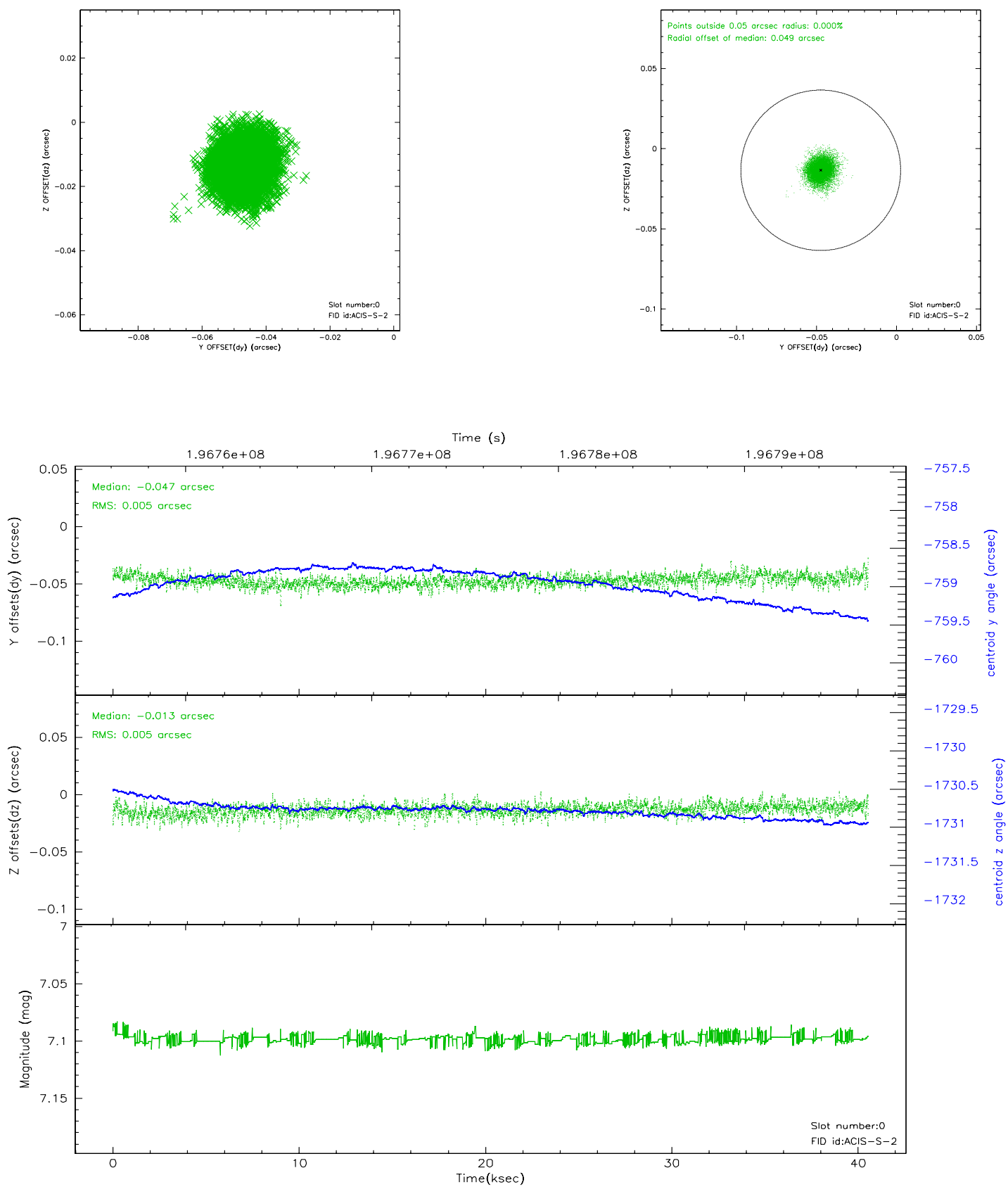


## 2.4.5 Slot 7

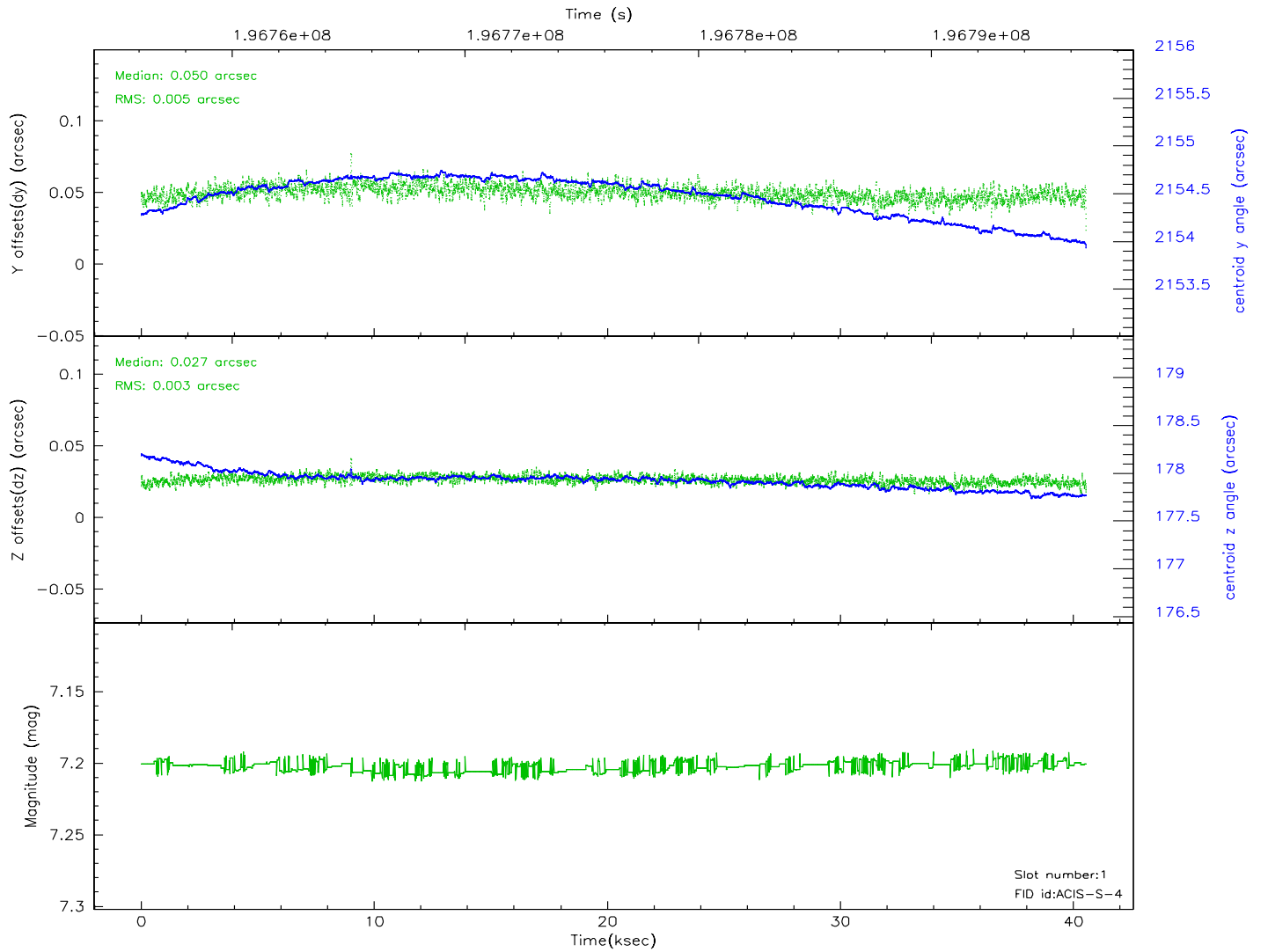
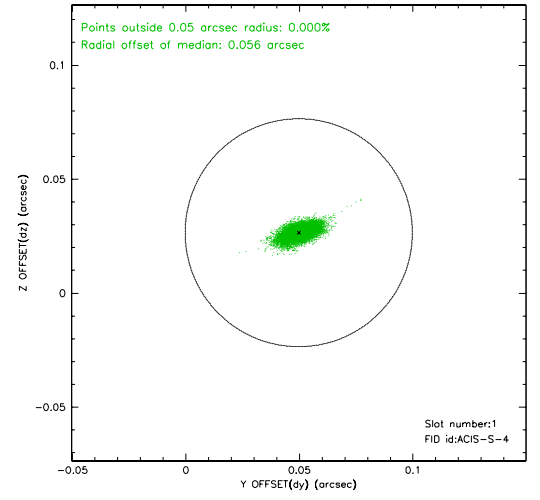
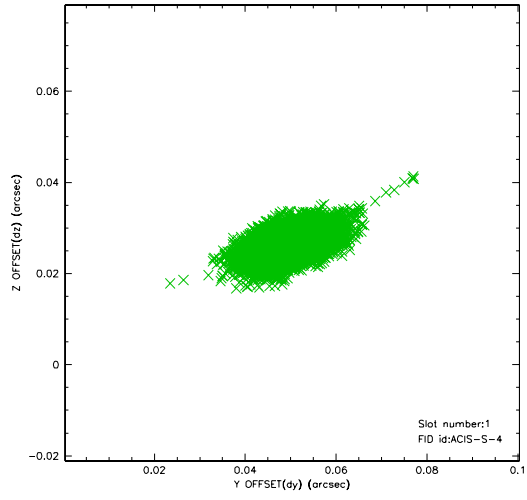


## 2.5 FID Slots

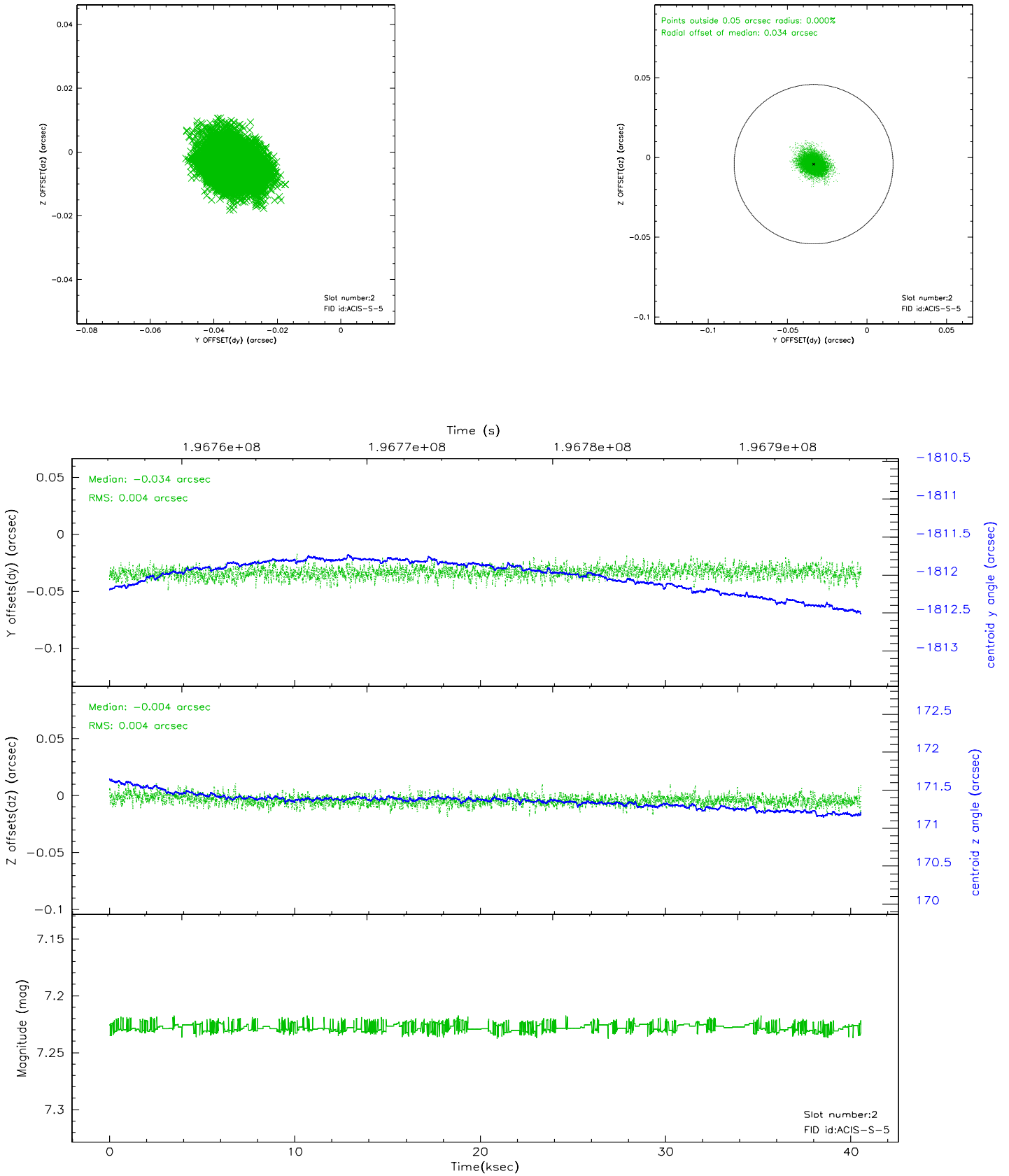
### 2.5.1 Slot 0



## 2.5.2 Slot 1

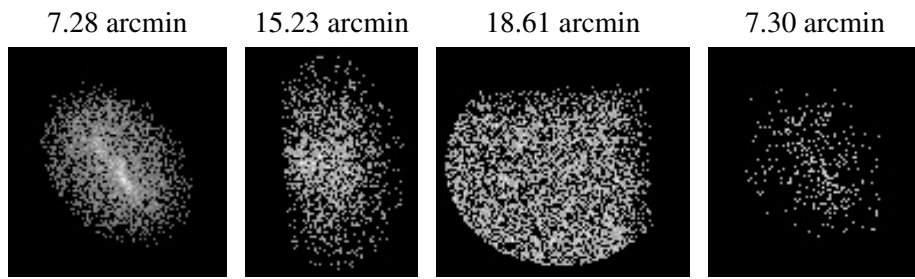


### 2.5.3 Slot 2





### 3 Point Sources



## A Summary

### A.1 Status

V&V Scientist	Beth Sundheim
V&V Date (YYYY-MM-DD)	2006.05.30
V&V Edition	1
V&V Disposition and Status	OK
V&V Charge Time	40.55

### A.2 Comments

Window constraint satisfied.