

V&V Reference Report

L2 ASCDS Version : 7.6.7.2

Observation 4549 - L2 Version 001
Chandra X-Ray Center

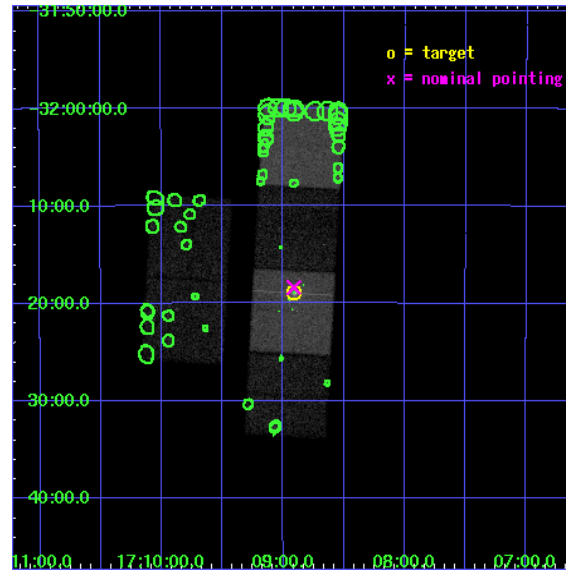
L2 Processing Date : Jun 7 2006

Contents

1	Front	2
2	OBI	3
2.1	OBI	3
2.1.1	Images	3
2.1.2	Bias	3
2.1.3	Parameters	4
2.1.4	Events	4
2.2	Compared Parameters	5
2.3	Aspect	6
2.4	Star Slots	9
2.4.1	Slot 3	9
2.4.2	Slot 4	10
2.4.3	Slot 5	11
2.4.4	Slot 6	12
2.4.5	Slot 7	13
2.5	FID Slots	14
2.5.1	Slot 0	14
2.5.2	Slot 1	15
2.5.3	Slot 2	16
3	Point Sources	17
A	Summary	18
A.1	Status	18
A.2	Comments	18

1 Front

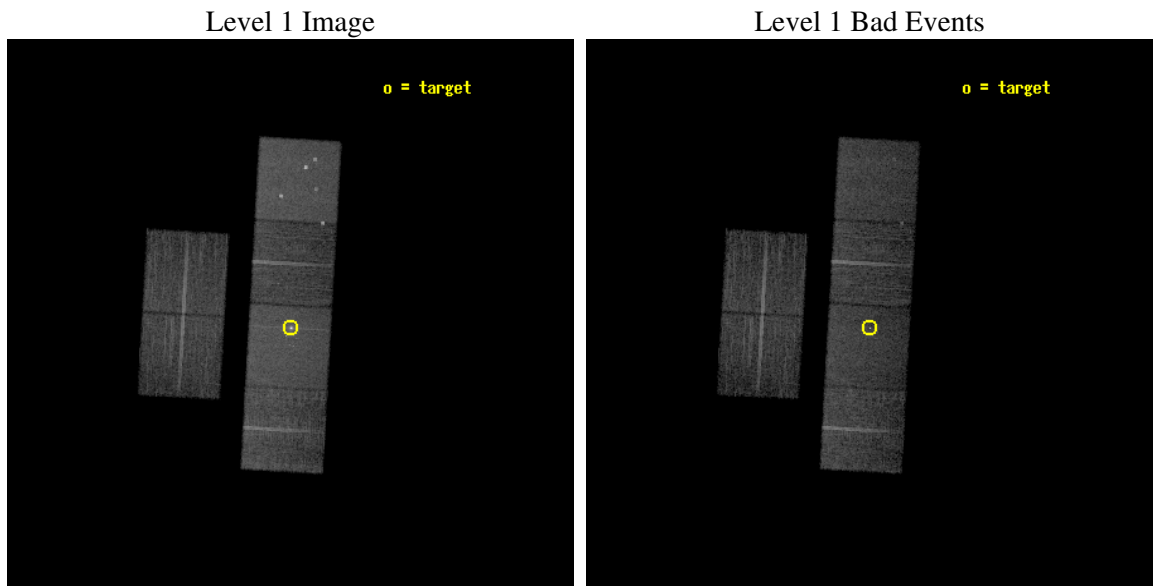
seq_num	400332
obs_id	4549
title	Low-luminosity X-ray binaries
observer	Dr Mariano Mendez
object	1RXS J170854.4-321857
dtcycle	0
cycle	P
ra_targ	257.226667
dec_targ	-32.315833
ra_nom	257.22798685578
dec_nom	-32.306264338436
roll_nom	93.268517723247
revision	2
ontime	13670.35900867
livetime	13497.2566916
ontime2	13673.599949062
ontime3	13670.358968884
ontime5	13670.358988792
ontime6	13673.599949062
ontime7	13670.35900867
ontime8	13673.599949062
l2events	143743



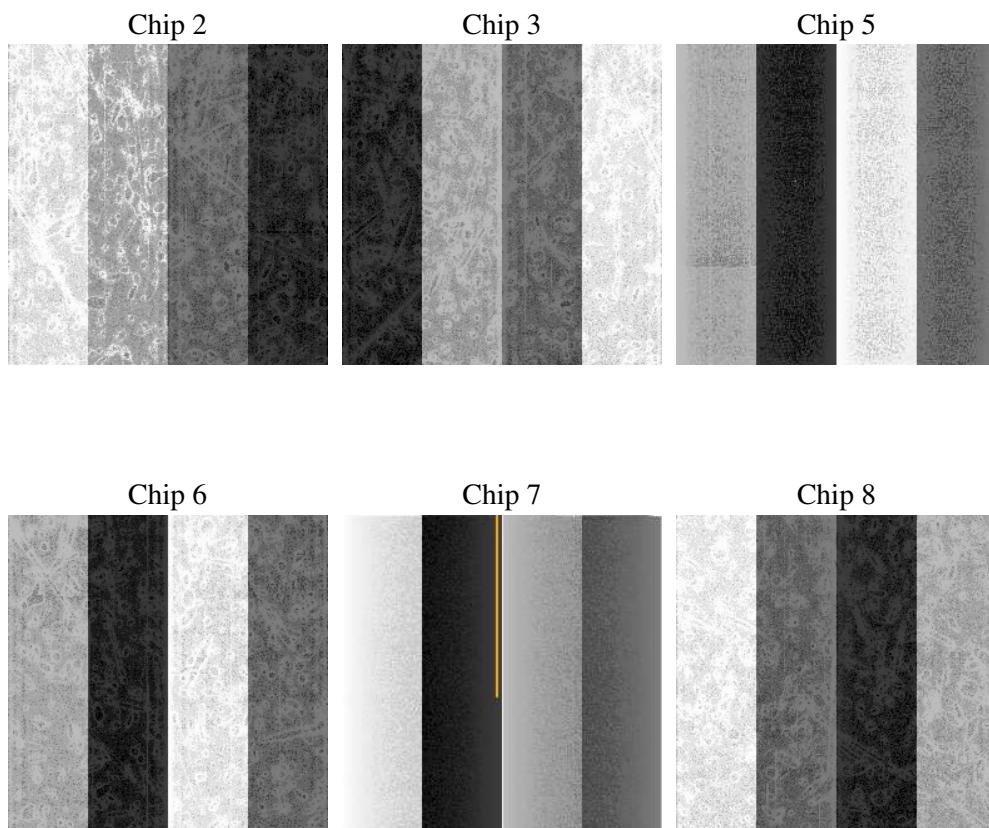
2 OBI

2.1 OBI

2.1.1 Images



2.1.2 Bias



2.1.3 Parameters

obi_num	0
ascdsver	7.6.7.2
caldbver	3.2.2
date	2006-06-07T05:21:29
revision	2

sched_exp_time	13500.000000
ontime	13809.899852961
ontime2	13813.140763462
ontime3	13809.899783283
ontime5	13809.899833083
ontime6	13813.140763462
ontime7	13809.899852961
ontime8	13813.140763462
l1events	599248

2.1.4 Events

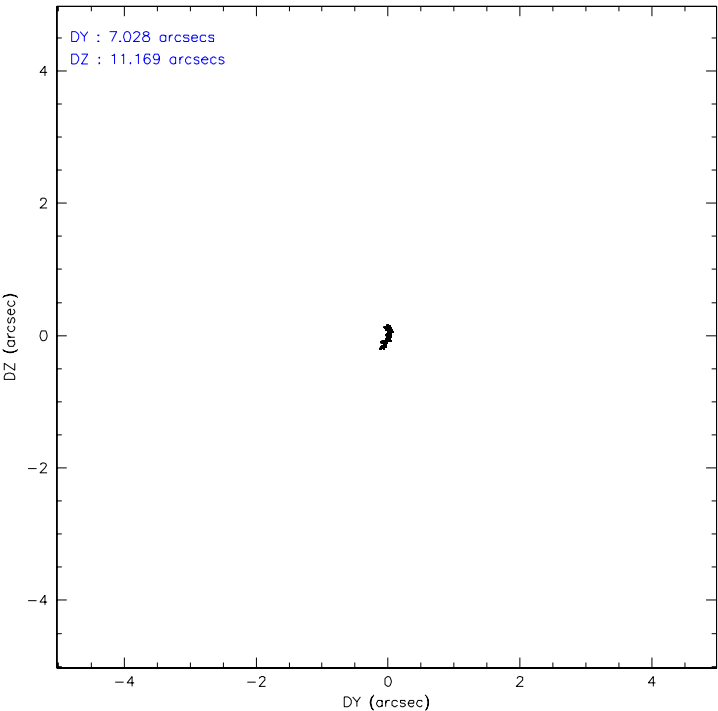
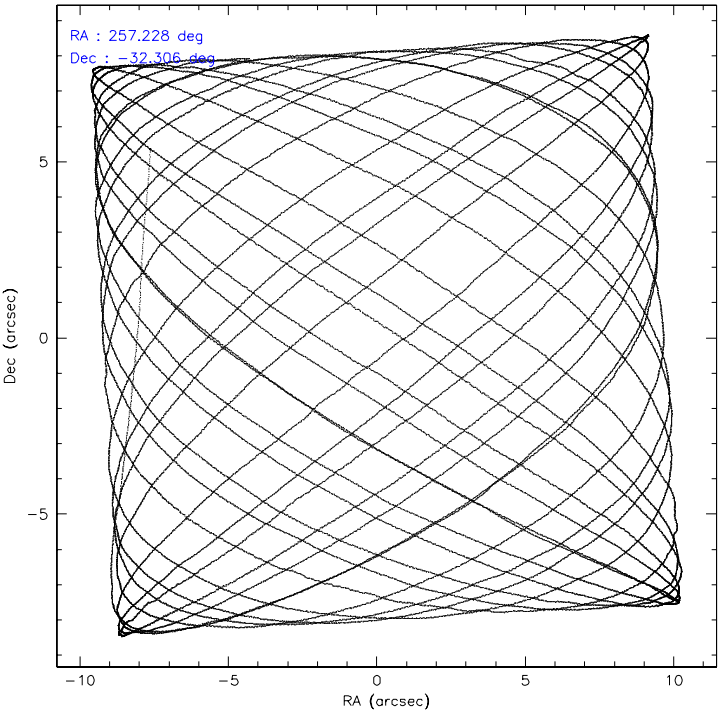
	ccd 2	ccd 3	ccd 5	ccd 6	ccd 7	ccd 8
level 1 events	82780	78656	128876	83429	124391	101116
rejected events	72038	67973	70096	71647	71208	79169
rejected %	87%	86%	54%	85%	57%	78%

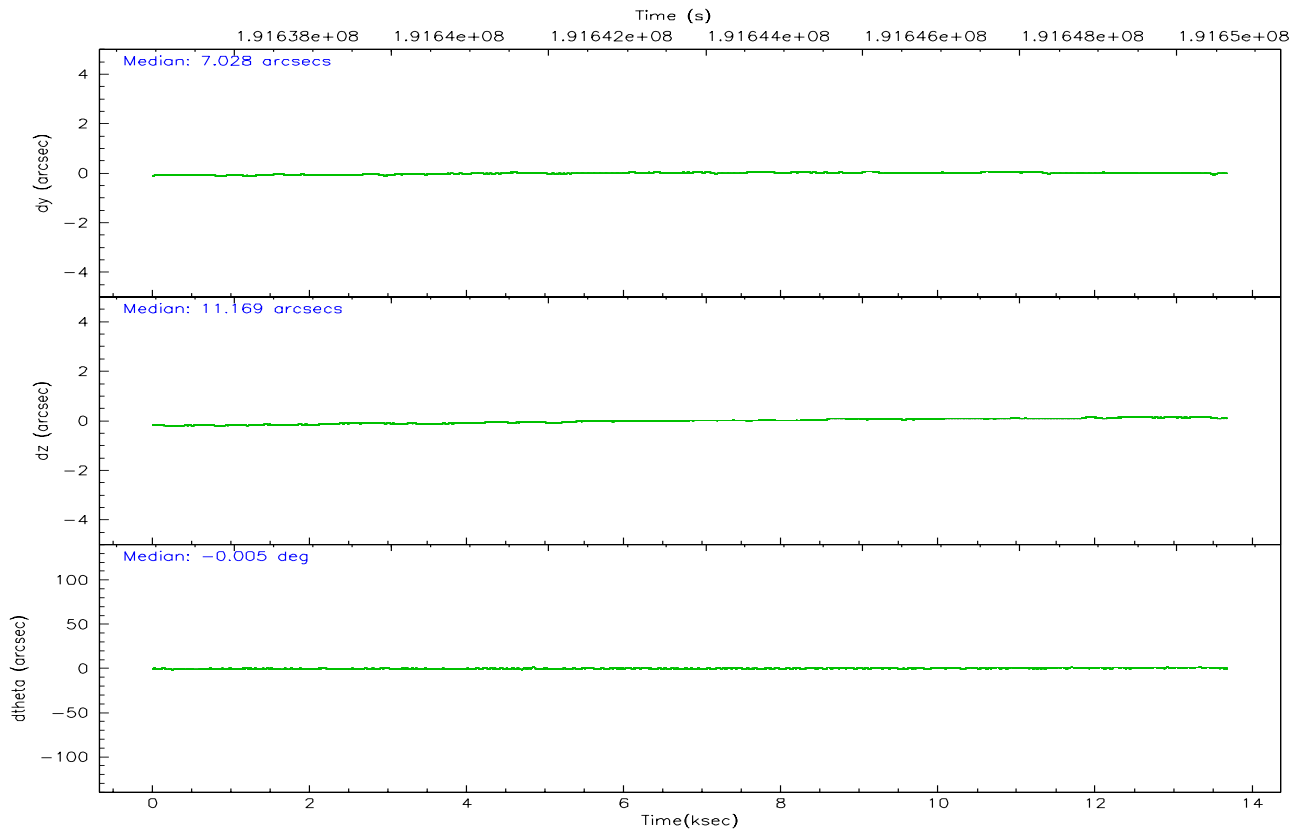
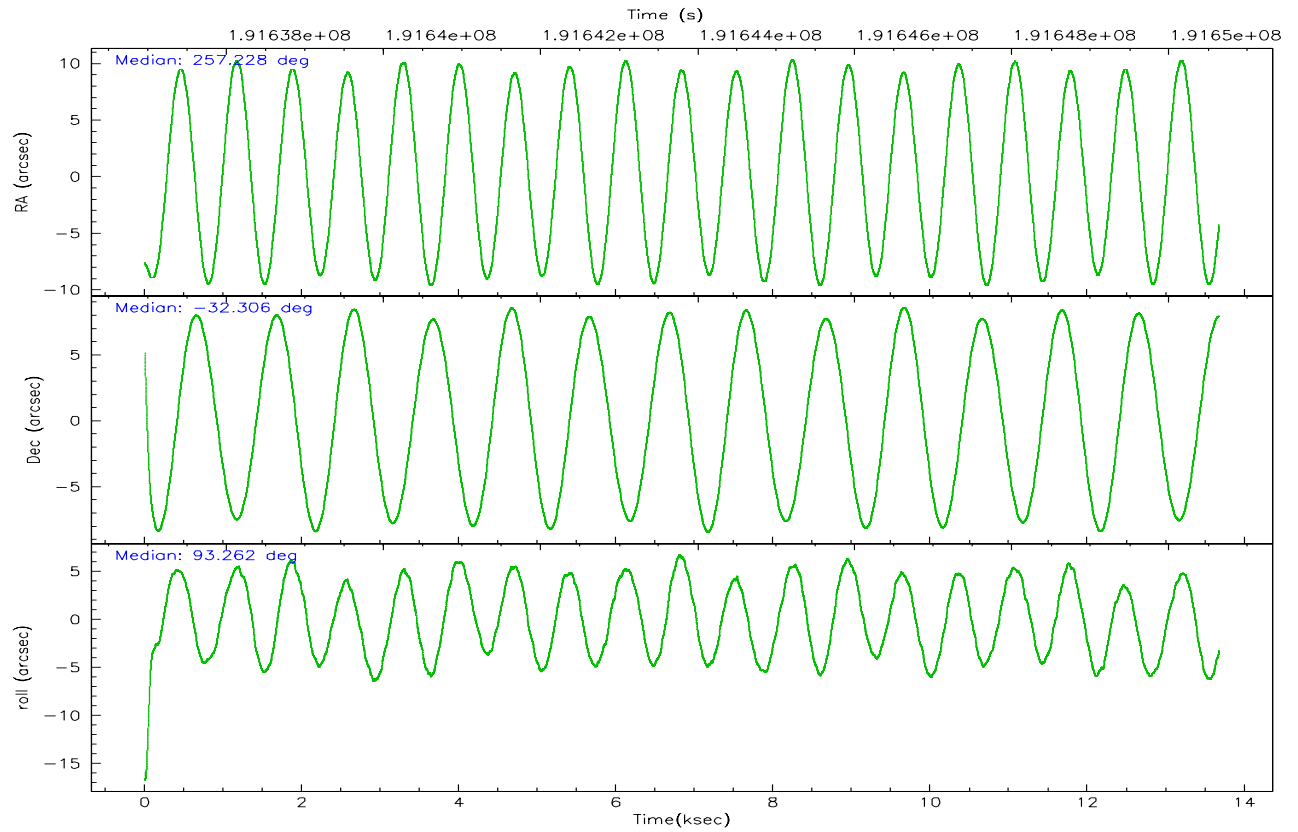
	ccd 2	ccd 3	ccd 5	ccd 6	ccd 7	ccd 8
grade 0 events	5119	5289	8408	5709	5215	7843
	6%	6%	6%	6%	4%	7%
grade 1 events	60	46	227	43	146	65
	0%	0%	0%	0%	0%	0%
grade 2 events	2161	1981	17299	2193	13579	4736
	2%	2%	13%	2%	10%	4%
grade 3 events	934	924	1403	1025	3358	2064
	1%	1%	1%	1%	2%	2%
grade 4 events	898	940	1418	1001	3368	1968
	1%	1%	1%	1%	2%	1%
grade 5 events	3151	3529	5884	3803	7668	4949
	3%	4%	4%	4%	6%	4%
grade 6 events	1724	1656	30825	1971	28257	5544
	2%	2%	23%	2%	22%	5%
grade 7 events	68733	64291	63412	67684	62800	73947
	83%	81%	49%	81%	50%	73%

2.2 Compared Parameters

Parameter	Planned	Actual	Parameter	Planned	Actual
Instrument	ACIS	ACIS	Obspar format version number	6	6
Detector	ACIS-235678	ACIS-235678	Obspar file type	PREDICTED	ACTUAL
Grating	NONE	NONE	Obspar update status	NONE	UPDATED
Data mode	FAINT	FAINT	On-chip summing requested	N	N
Observation mode	POINTING	POINTING	Subarray requested	NONE	NONE
Pointing RA	257.246064	257.2279868557758	Alternating exposures requested	N	N
Pointing Dec	-32.328795	-32.30626433843562	Primary exposure time	0.000000	3.2
Pointing Roll	93.121576	93.26851772324699			
SIM focus pos (mm)	-0.684267	-0.6828225247311905			
SIM defocus (mm)	0	0.001444936568705701			
SIM translation stage pos (mm)	-190.132523	-190.1425803651734			
SIM translation stage offset (mm)	0	0.01005778216563158			
Observation start time	191637144.184000	191636010.61215			
Observation start date	2004-01-28T00:31:20	2004-01-28T00:13:30			
Observation end time	191650644.184000	191651534.23782			
Observation end date	2004-01-28T04:16:20	2004-01-28T04:32:14			
Read mode	TIMED	TIMED			

2.3 Aspect



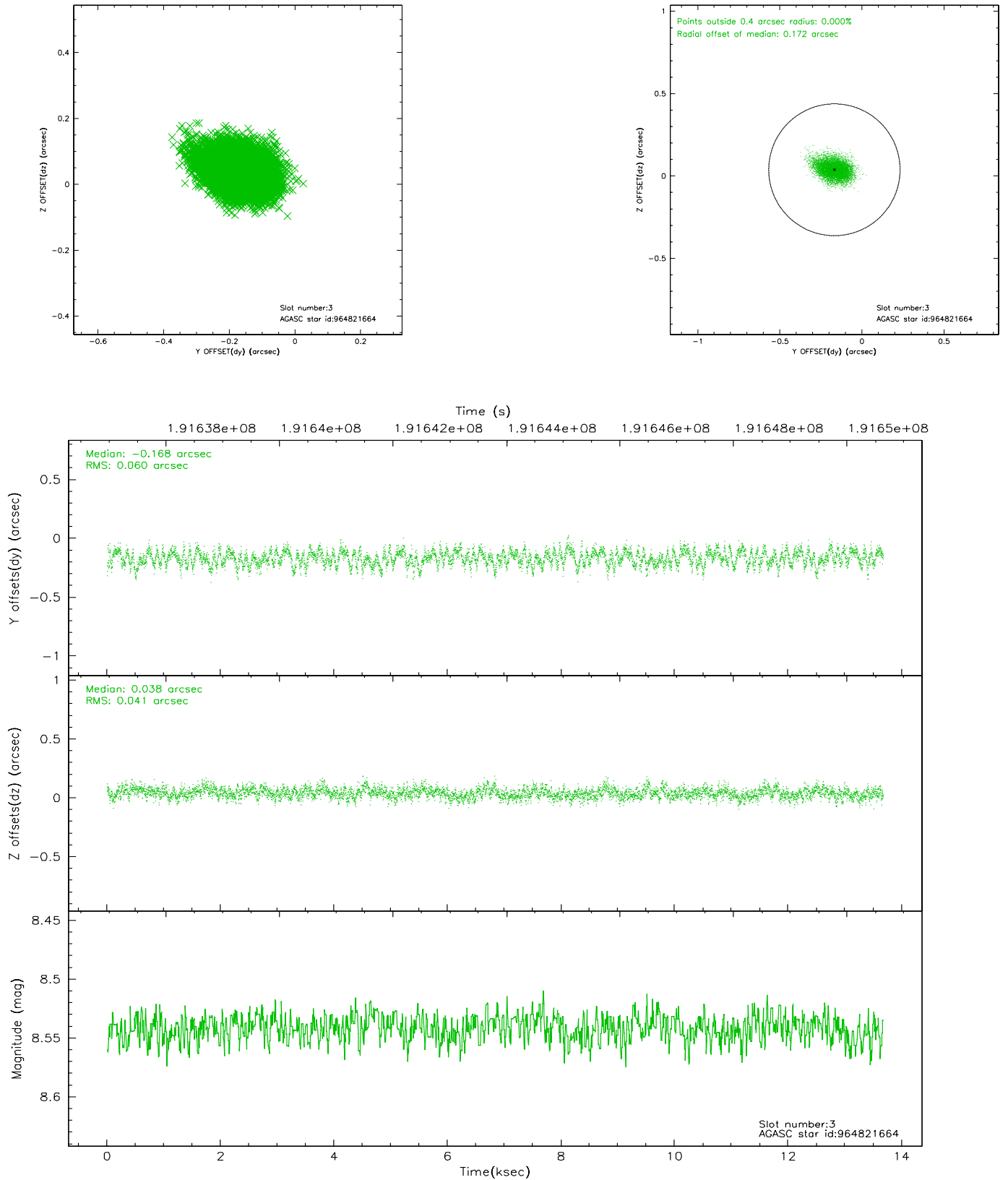


Slot Statistics

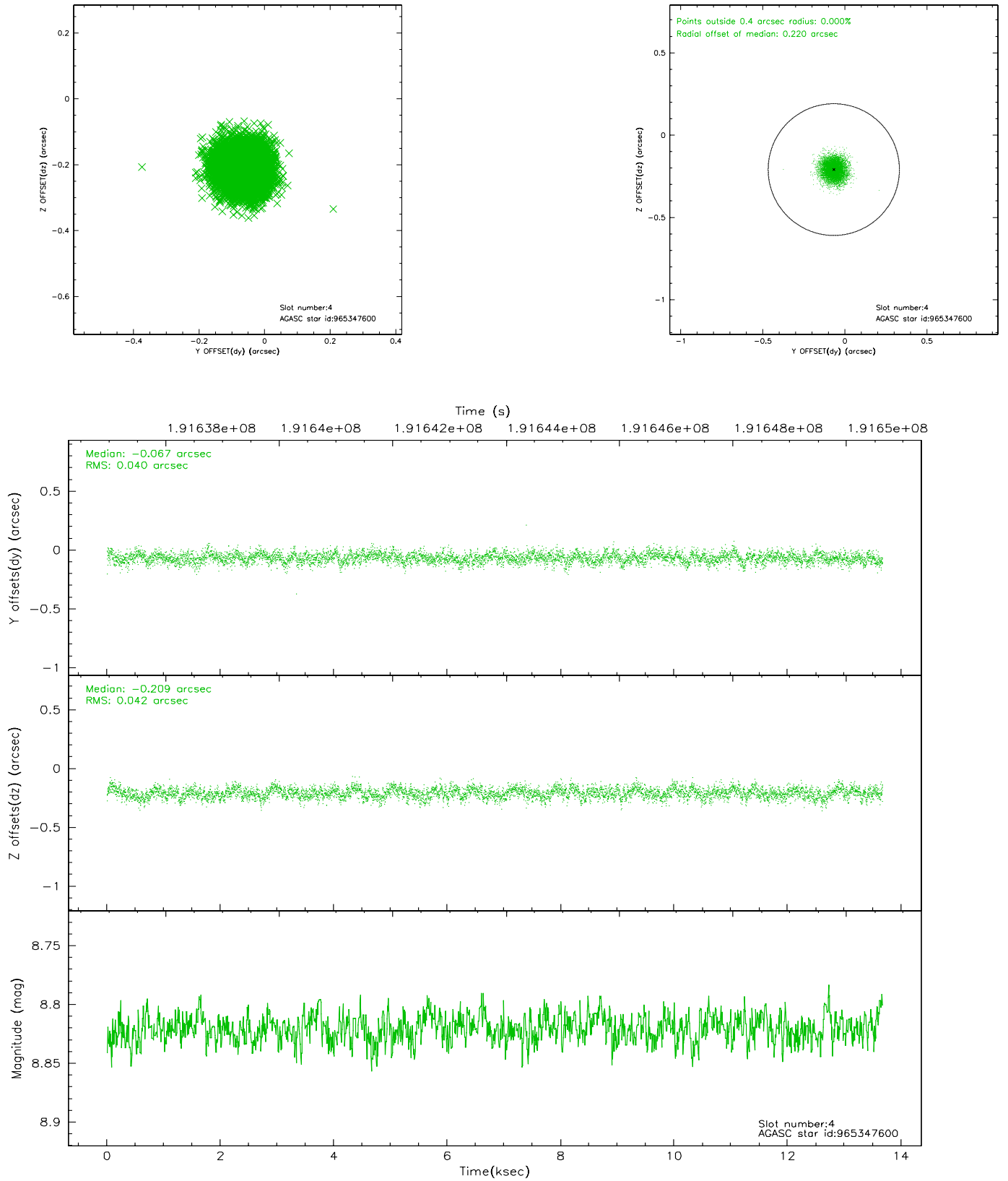
slot	status	id	mag	n_pts	med_dy	med_dz	dr1	dr2	ra	dec	mean_y	mean_z
0	FID	ACIS-S-2	7.10	3336	-0.030	0.008	0.007	0.011	0.000000	0.000000	-759.77	-1732.39
1	FID	ACIS-S-4	7.20	3336	0.026	0.012	0.006	0.009	0.000000	0.000000	2153.37	175.79
2	FID	ACIS-S-5	7.23	3336	-0.027	-0.012	0.006	0.011	0.000000	0.000000	-1812.20	169.77
3	GUIDE	964821664	8.54	6671	-0.168	0.038	0.077	0.126	257.959642	-31.747667	1963.21	-2294.62
4	GUIDE	965347600	8.82	6673	-0.067	-0.209	0.062	0.100	256.993678	-31.977059	1305.76	700.37
5	GUIDE	964828392	9.32	6669	0.009	0.239	0.079	0.130	256.830445	-31.804107	1953.24	1167.57
6	GUIDE	965351944	9.09	6670	0.121	-0.082	0.074	0.118	257.024404	-32.627347	-1036.69	729.62
7	GUIDE	965351608	8.89	6671	0.106	0.014	0.076	0.124	257.606184	-32.621094	-1111.69	-1032.90

2.4 Star Slots

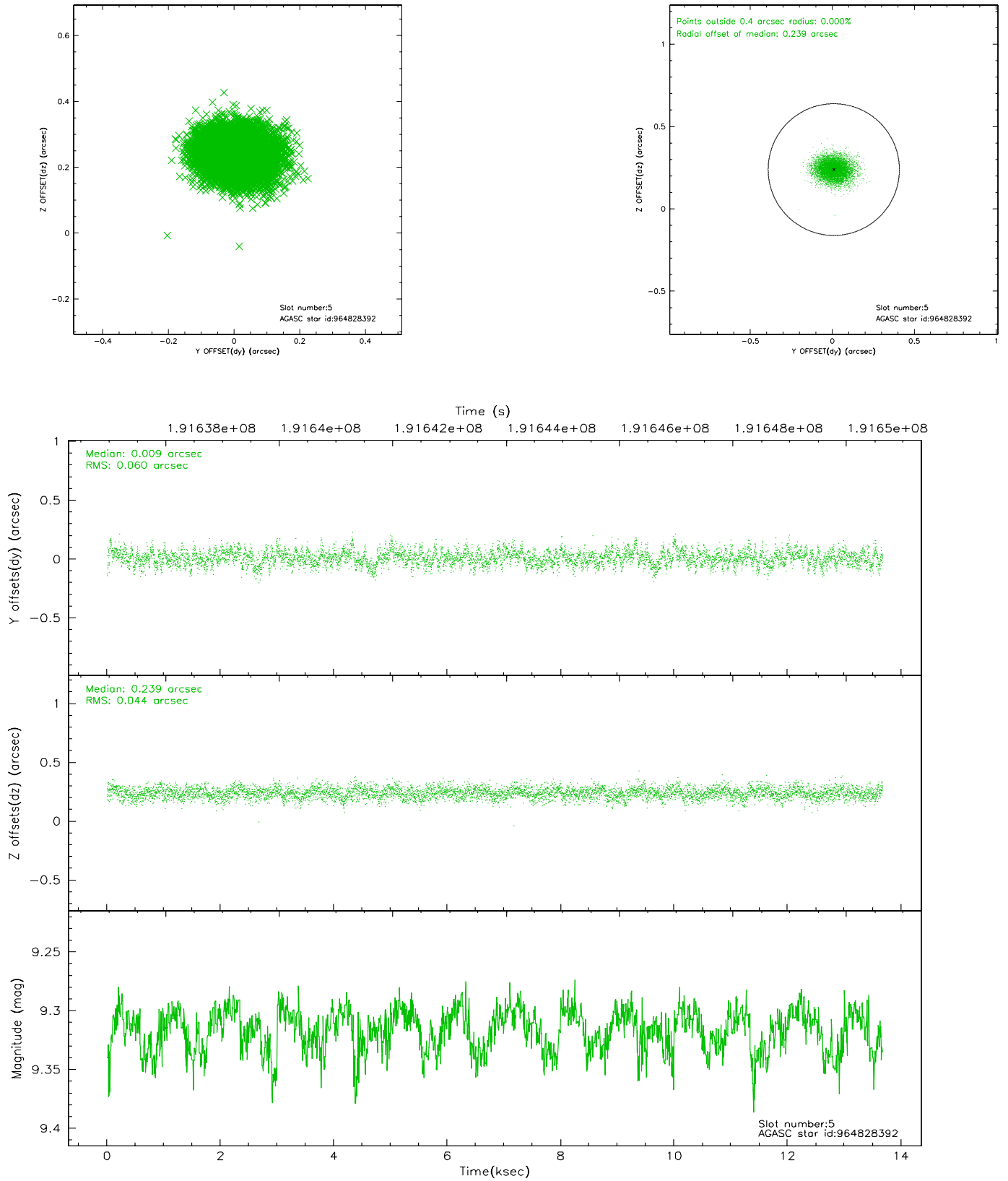
2.4.1 Slot 3



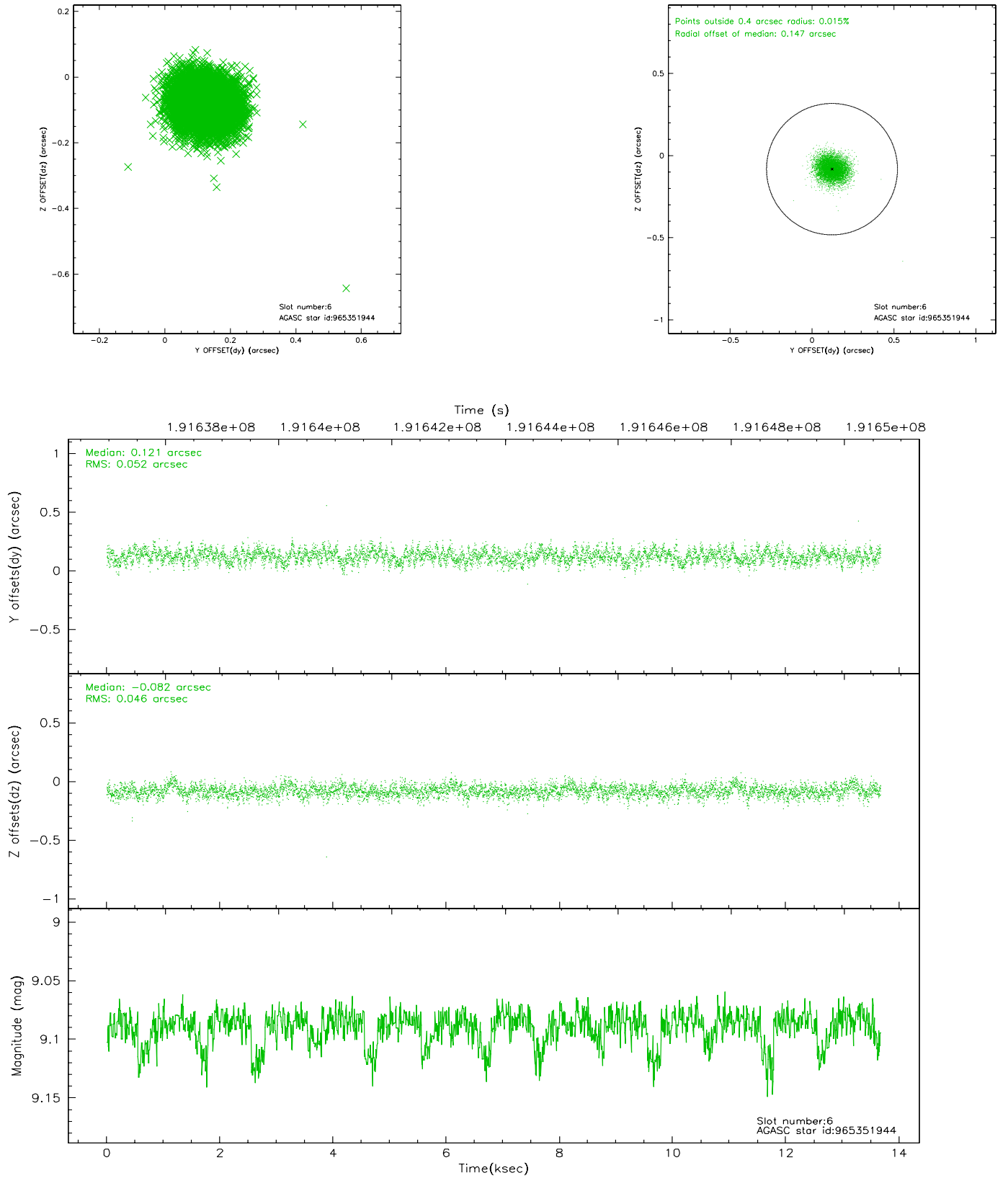
2.4.2 Slot 4



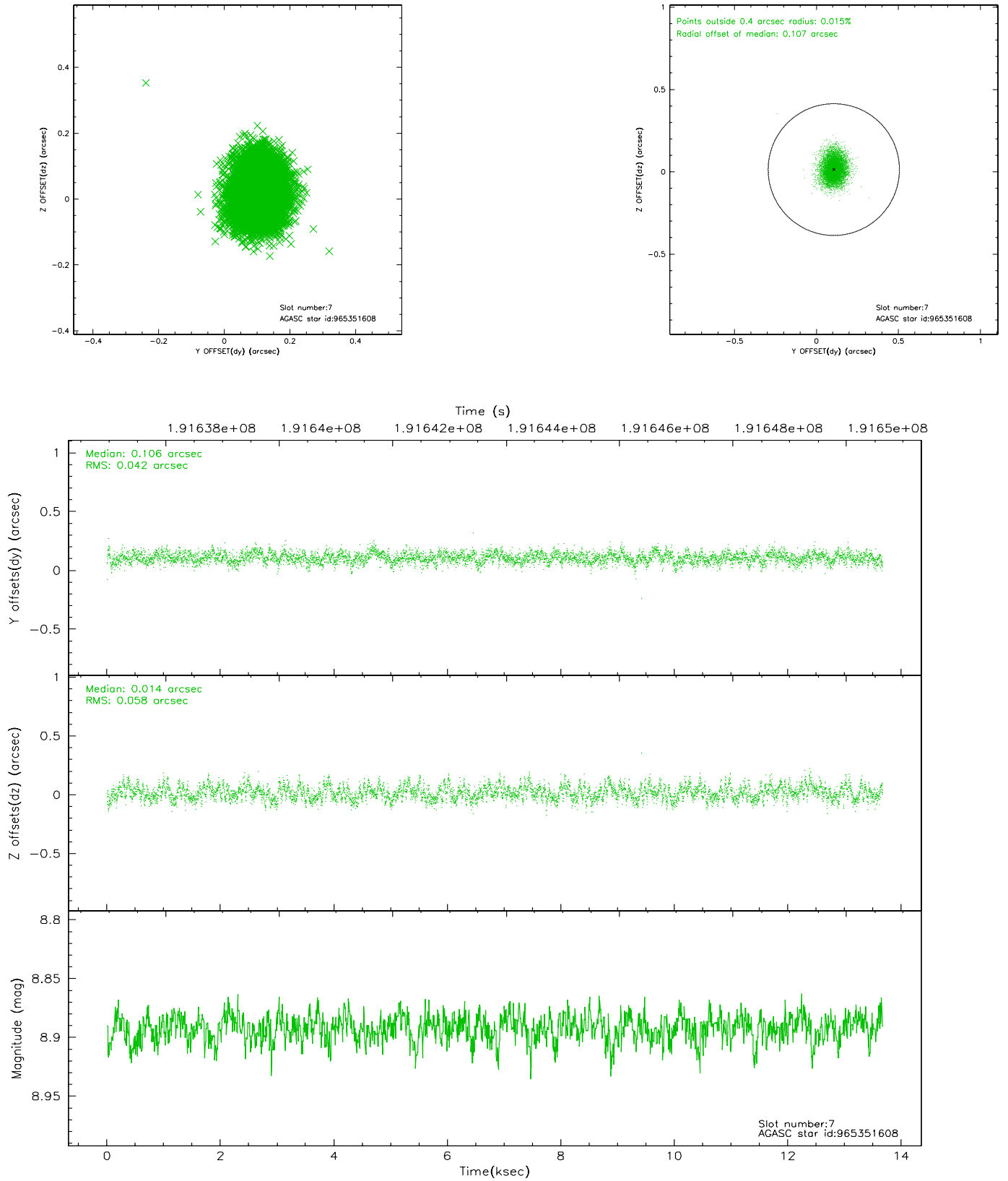
2.4.3 Slot 5



2.4.4 Slot 6

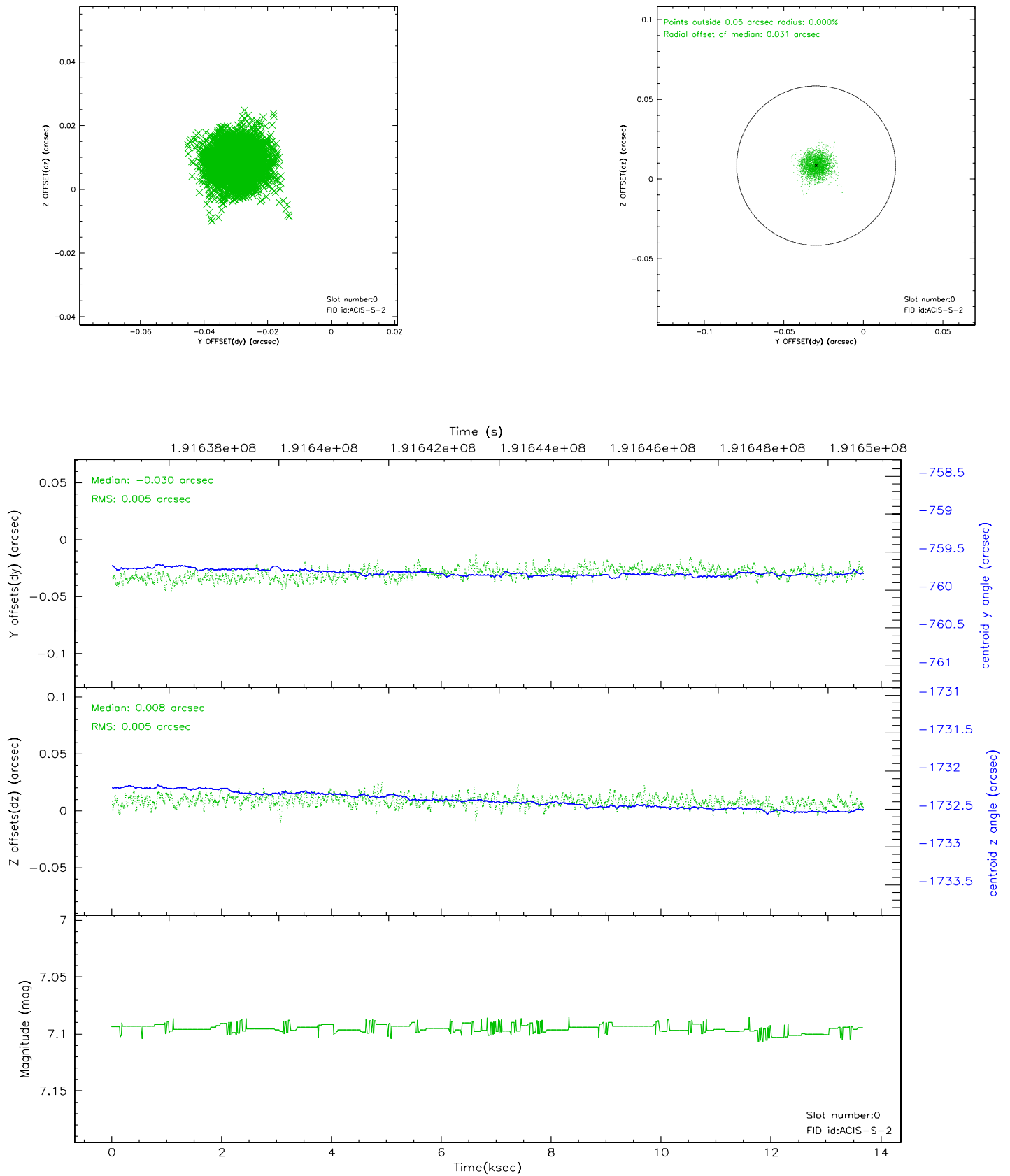


2.4.5 Slot 7

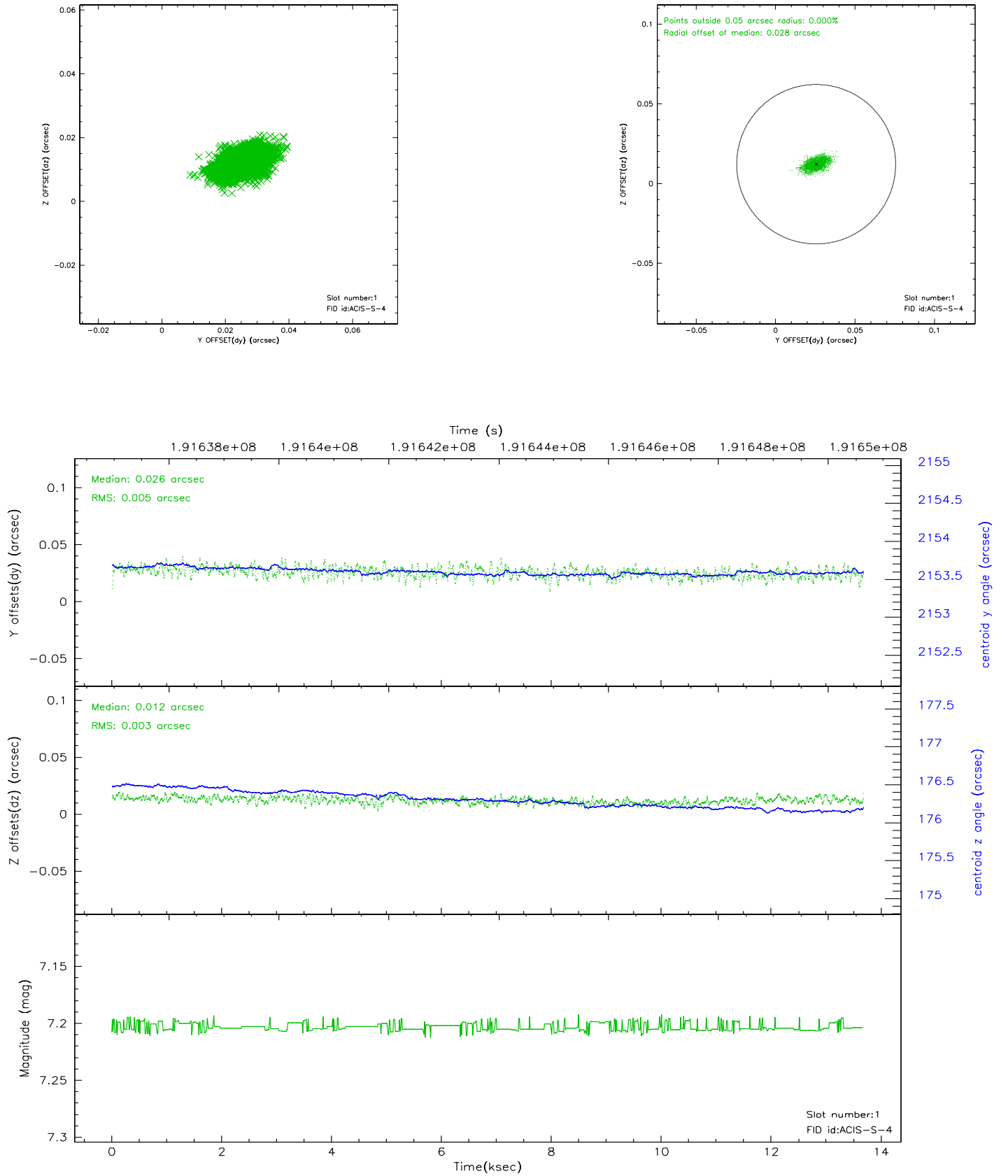


2.5 FID Slots

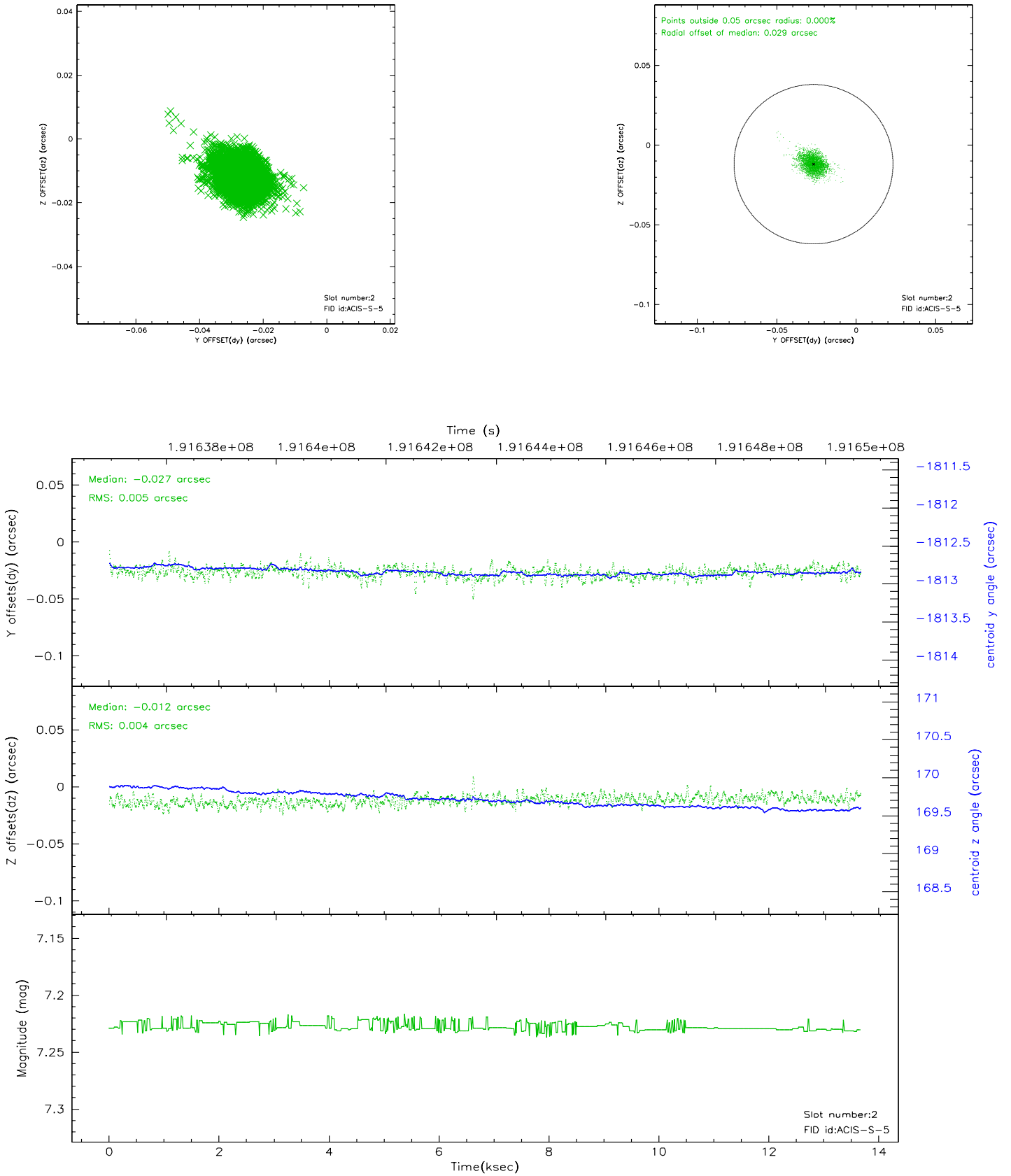
2.5.1 Slot 0



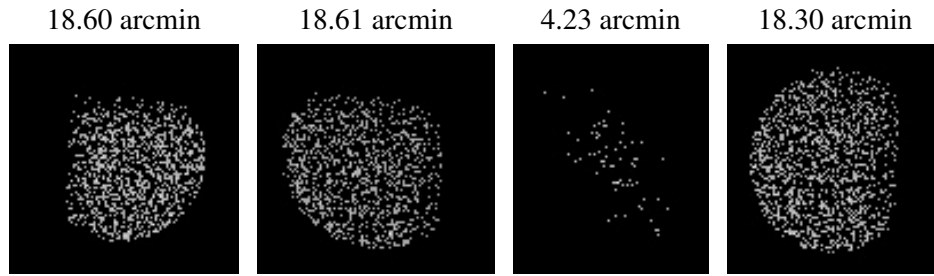
2.5.2 Slot 1



2.5.3 Slot 2



3 Point Sources



A Summary

A.1 Status

V&V Scientist	Beth Sundheim
V&V Date (YYYY-MM-DD)	2006.06.07
V&V Edition	1
V&V Disposition and Status	OK
V&V Charge Time	13.638

A.2 Comments