

V&V Reference Report

L2 ASCDS Version : 8.4.5

Observation 5303 - L2 Version 3
Chandra X-Ray Center

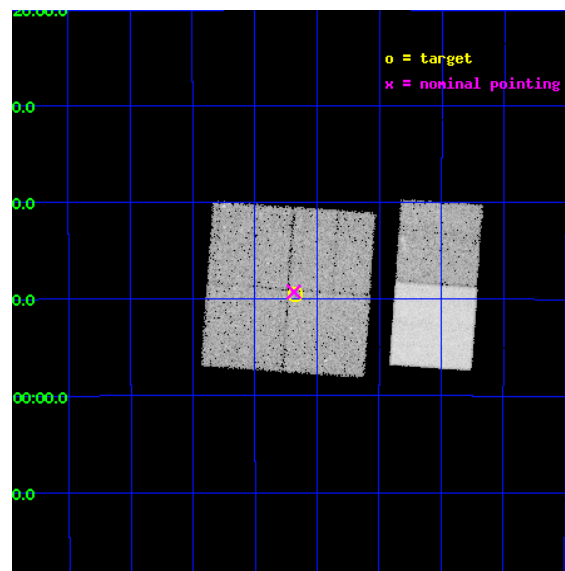
L2 Processing Date : Nov 11 2012

Contents

1	Front	2
2	OBI	3
2.1	OBI	3
2.1.1	Images	3
2.1.2	Bias	3
2.1.3	Parameters	4
2.1.4	Events	4
2.2	Compared Parameters	5
2.3	Aspect	6
2.4	Star Slots	9
2.4.1	Slot 3	9
2.4.2	Slot 4	10
2.4.3	Slot 5	11
2.4.4	Slot 6	12
2.4.5	Slot 7	13
2.5	FID Slots	14
2.5.1	Slot 0	14
2.5.2	Slot 1	15
2.5.3	Slot 2	16
A	Summary	17
A.1	Status	17
A.2	Comments	17

1 Front

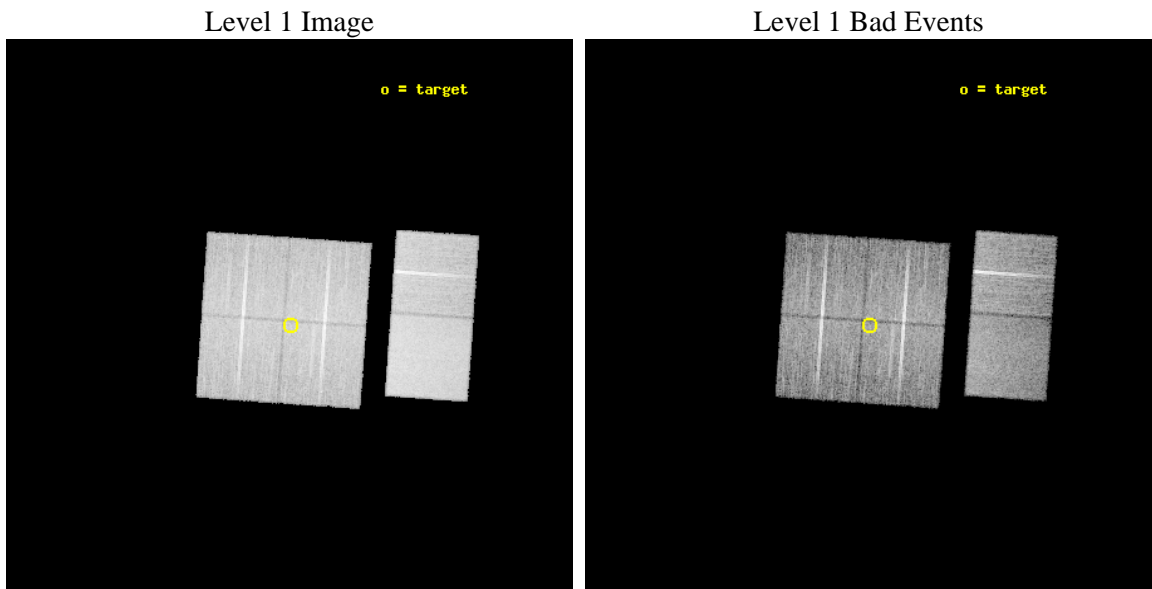
seq_num	300141	Sequence number
obs_id	5303	Observation id
title	Galactic Bulge Deep Survey	Proposal title
observer	Professor Johnathan Grindlay	Principal investigator
object	Stanek window	Source name
dtcycle	0	
cycle	P	events from which exps? Prim/Second/Both
ra_targ	268.67	Observer's specified target RA [deg]
dec_targ	-29.825556	Observer's specified target Dec [deg]
ra_nom	268.67174672216	Nominal RA [deg]
dec_nom	-29.8211698375	Nominal Dec [deg]
roll_nom	94.009555055893	Nominal Roll [deg]
revision	3	Processing version of data
ontime	18748.75895986	Sum of GTIs [s]
livetime	18511.350884763	Livetime [s]
ontime0	18751.999930143	Sum of GTIs [s]
ontime1	18751.999930143	Sum of GTIs [s]
ontime2	18751.999930143	Sum of GTIs [s]
ontime3	18748.75895986	Sum of GTIs [s]
ontime6	18751.999930143	Sum of GTIs [s]
ontime7	18751.999930143	Sum of GTIs [s]
l2events	160018	Number of level 2 events



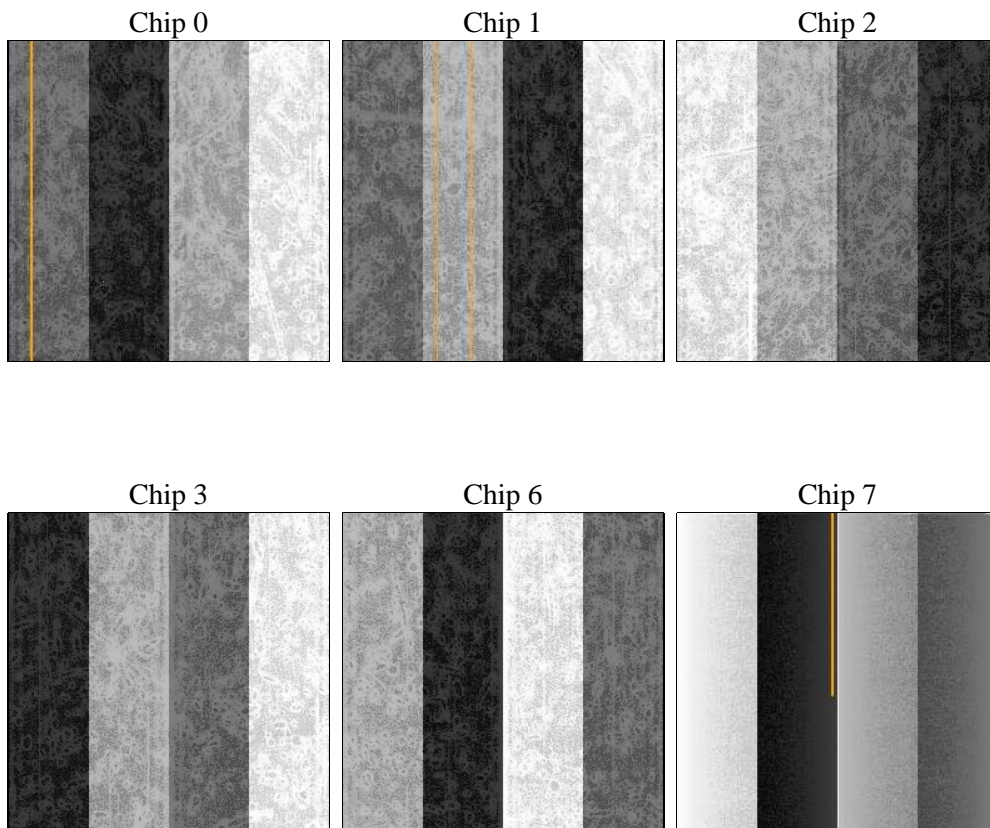
2 OBI

2.1 OBI

2.1.1 Images



2.1.2 Bias



2.1.3 Parameters

obi_num	0	Obi number	sched_exp_time	19000.000000	[s] Scheduled observation exposure time
ascdsver	8.4.5	Processing system revision	ontime	18748.75895986	Sum of GTIs [s]
caldsver	4.5.2	 	ontime0	18751.999930143	Sum of GTIs [s]
date	2012-11-11T23:55:14	Date and time of file creation	ontime1	18751.999930143	Sum of GTIs [s]
revision	3	Processing version of data	ontime2	18751.999930143	Sum of GTIs [s]
			ontime3	18748.75895986	Sum of GTIs [s]
			ontime6	18751.999930143	Sum of GTIs [s]
			ontime7	18751.999930143	Sum of GTIs [s]
			l1events	781717	Number of level 1 events

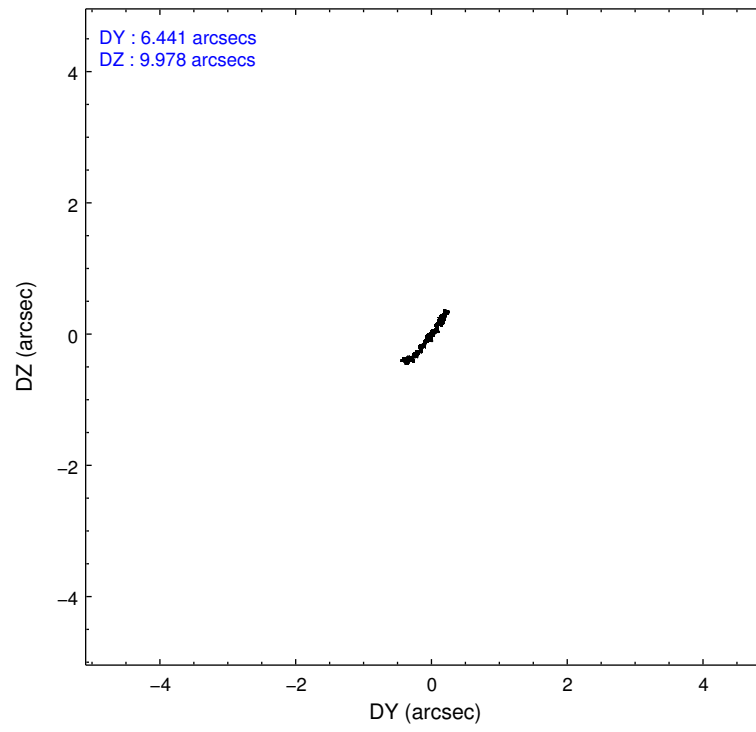
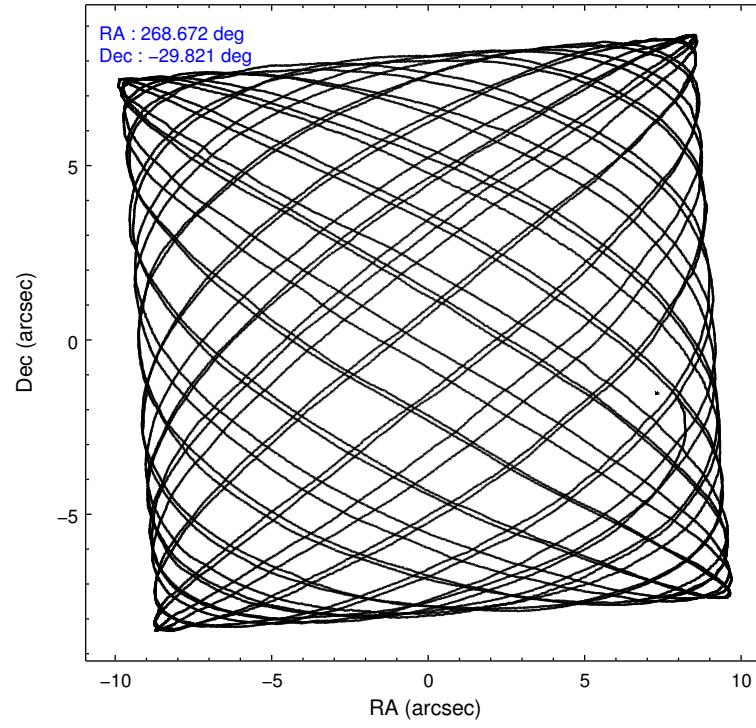
2.1.4 Events

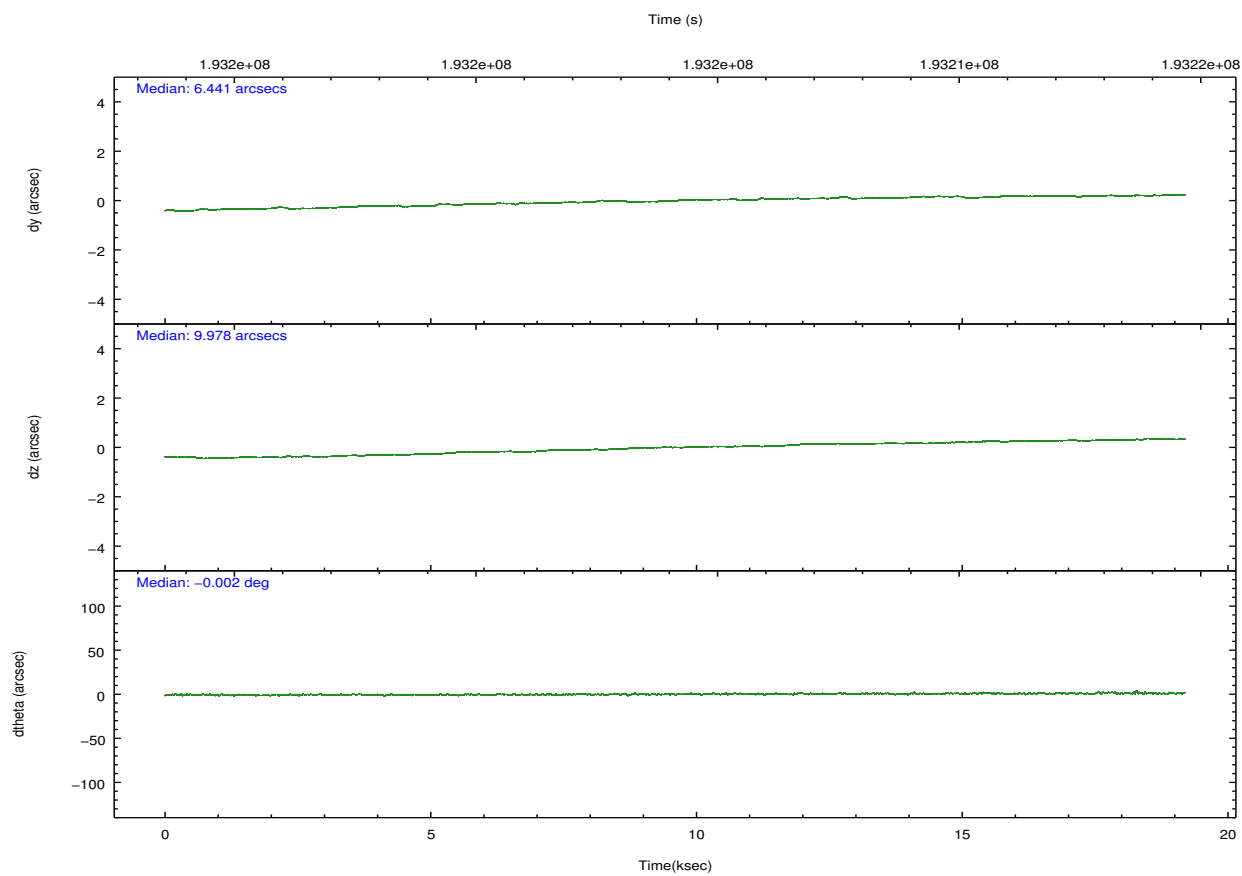
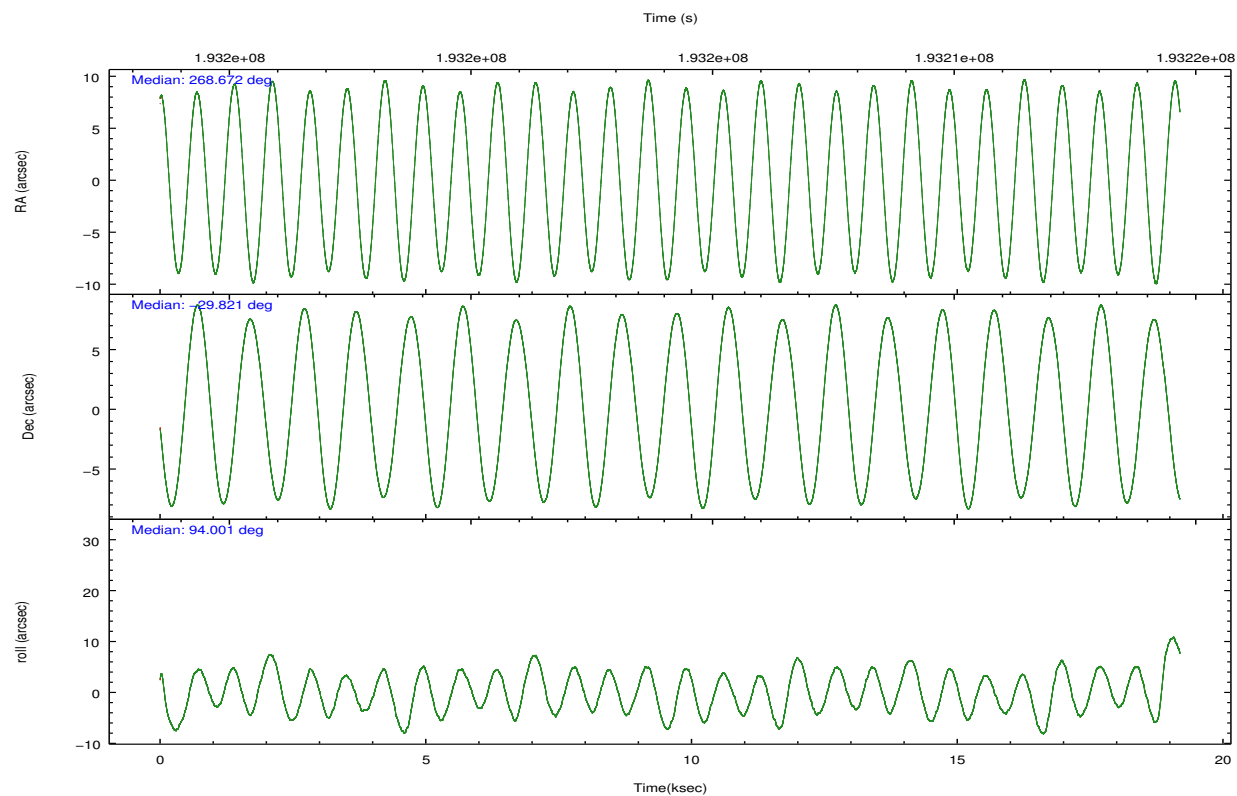
	ccd 0	ccd 1	ccd 2	ccd 3	ccd 6	ccd 7		ccd 0	ccd 1	ccd 2	ccd 3	ccd 6	ccd 7
level 1 events	116864	116281	125492	120898	130136	172046	grade 0 events	10034	9642	11130	10701	10570	8201
rejected events	97602	96837	105696	101575	109820	97078		8%	8%	8%	8%	8%	4%
rejected %	83%	83%	84%	84%	84%	56%	grade 1 events	70	66	89	100	74	184
								0%	0%	0%	0%	0%	0%
							grade 2 events	3473	3515	3395	3107	3570	15493
								2%	3%	2%	2%	2%	9%
							grade 3 events	1573	1584	1394	1544	1585	6956
								1%	1%	1%	1%	1%	4%
							grade 4 events	1497	1652	1493	1456	1502	6784
								1%	1%	1%	1%	1%	3%
							grade 5 events	5021	5082	4706	5478	5724	16061
								4%	4%	3%	4%	4%	9%
							grade 6 events	2694	3056	2393	2518	3100	37552
								2%	2%	1%	2%	2%	21%
							grade 7 events	92502	91684	100892	95994	104011	80815
								79%	78%	80%	79%	79%	46%

2.2 Compared Parameters

Parameter	Planned	Actual	Parameter	Planned	Actual
Instrument	ACIS	ACIS	Obspar format version number	7	7
Detector	ACIS-012367	ACIS-012367	Obspar file type	PREDICTED	ACTUAL
Grating	NONE	NONE	Obspar update status	NONE	UPDATED
Data mode	FAINT	FAINT	Number of optional ACIS chips dropped	0	0
Observation mode	POINTING	POINTING	On-chip summing requested	N	N
[deg] Pointing RA	268.689497	268.6717467221582	Subarray requested	NONE	NONE
[deg] Pointing Dec	-29.843806	-29.82116983749976	Alternating exposures requested	N	N
[deg] Pointing Roll	93.809701	94.00955505589256	[s] Primary exposure time	0.000000	3.2
[mm] SIM focus pos	-0.782348	-0.7809083437167272			
[mm] SIM defocus	0	0.001439871863259334			
[mm] SIM translation stage pos	-233.592463	-233.5874344608287			
[mm] SIM translation stage offset	0	-0.005018542100998502			
[s] Observation start time (MET)	193194718.184000	193191309.80514			
Observation start date	2004-02-15T01:10:54	2004-02-15T00:15:09			
[s] Observation end time (MET)	193213718.184000	193214472.75615			
Observation end date	2004-02-15T06:27:34	2004-02-15T06:41:12			
Read mode	TIMED	TIMED			

2.3 Aspect



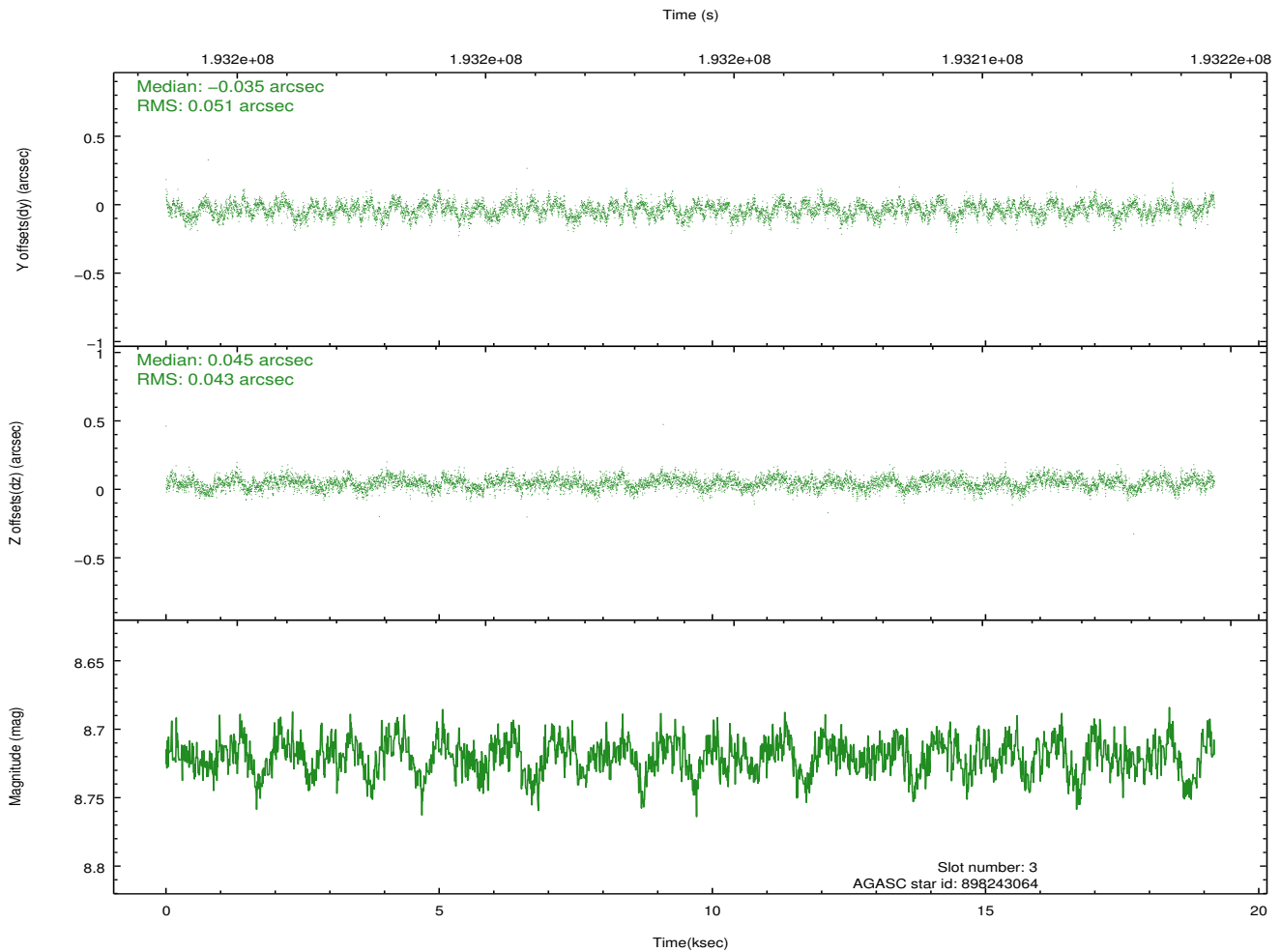
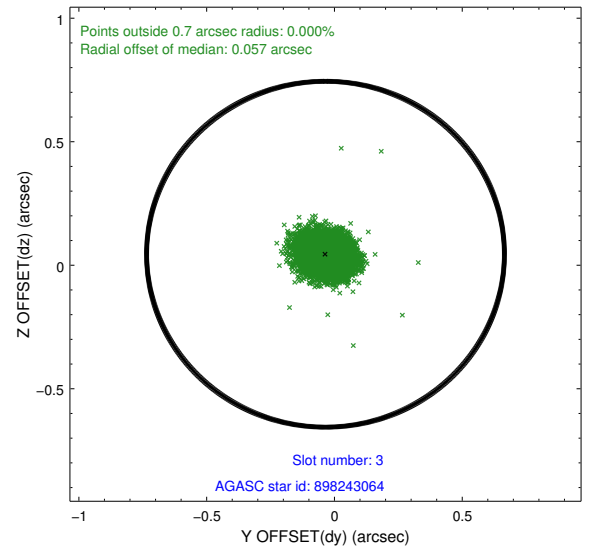
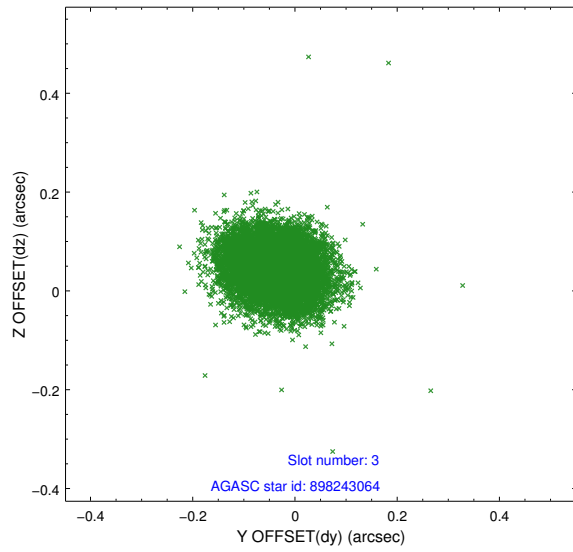


Slot Statistics

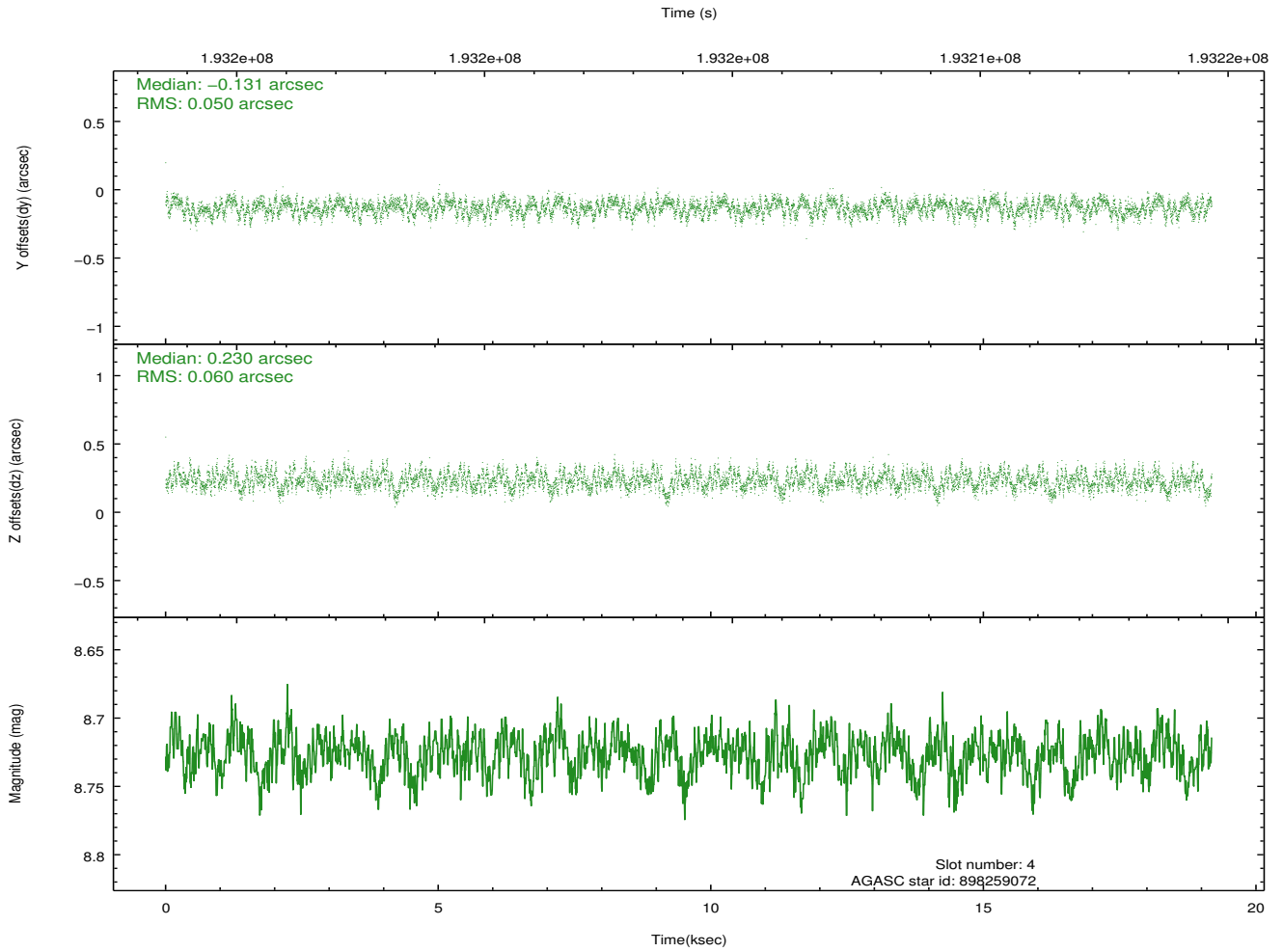
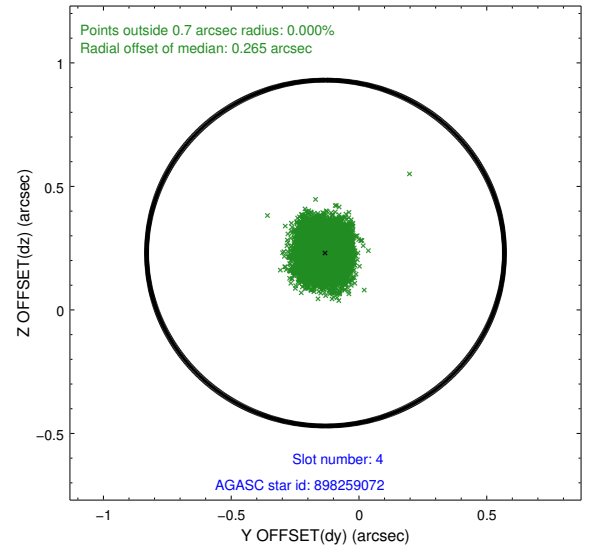
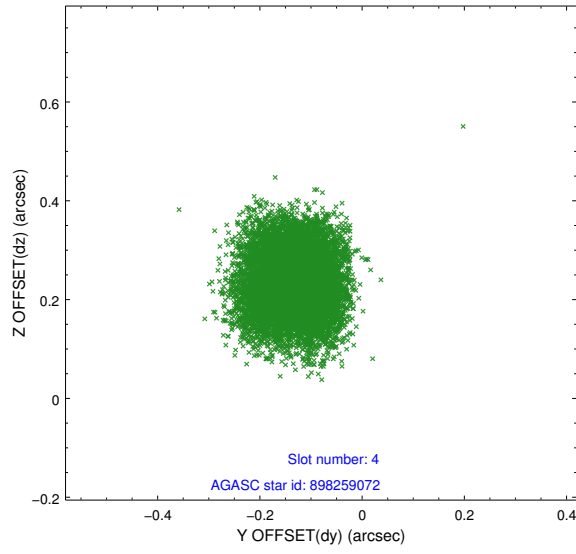
slot	status	id	mag	n_pts	med_dy	med_dz	dr1	dr2	ra	dec	mean_y	mean_z
0	FID	ACIS-I-1	7.24	4681	0.004	0.017	0.015	0.025	0.000000	0.000000	933.29	-833.40
1	FID	ACIS-I-5	7.23	4680	-0.142	0.031	0.006	0.012	0.000000	0.000000	-1814.84	1064.01
2	FID	ACIS-I-6	7.25	4681	0.046	0.024	0.013	0.022	0.000000	0.000000	398.67	1708.73
3	GUIDE	898243064	8.72	9360	-0.035	0.045	0.071	0.114	268.852106	-29.678564	559.65	-546.53
4	GUIDE	898259072	8.73	9358	-0.131	0.230	0.085	0.132	269.401862	-29.860959	-215.77	-2214.06
5	GUIDE	967057128	9.35	9353	0.082	-0.186	0.110	0.181	267.996939	-30.494743	-2202.07	2299.45
6	GUIDE	967070136	8.74	9358	0.089	0.093	0.080	0.134	269.219754	-30.286661	-1703.80	-1538.17
7	GUIDE	967053960	9.24	9355	-0.009	-0.182	0.080	0.130	268.185736	-30.091336	-788.54	1624.99

2.4 Star Slots

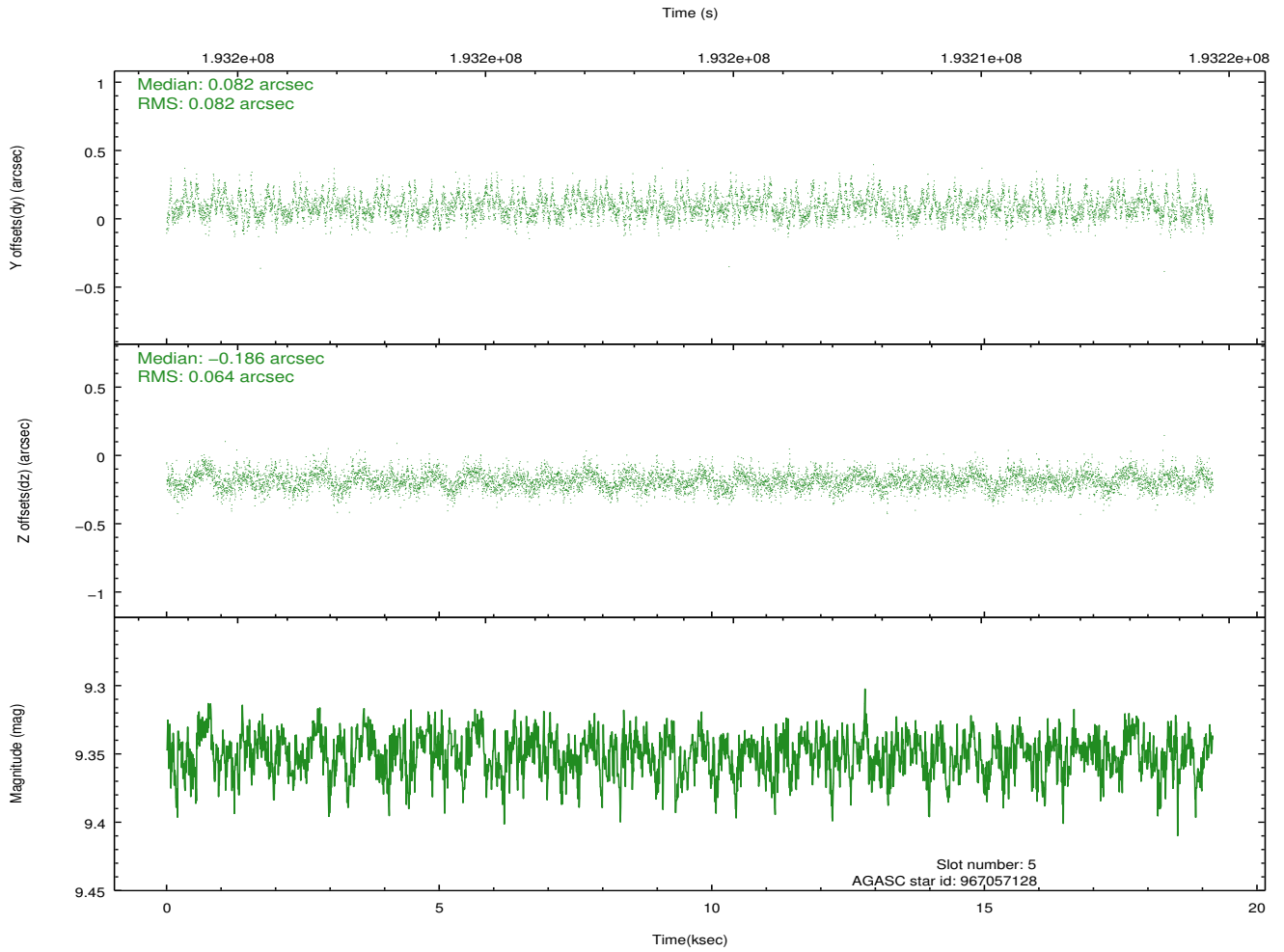
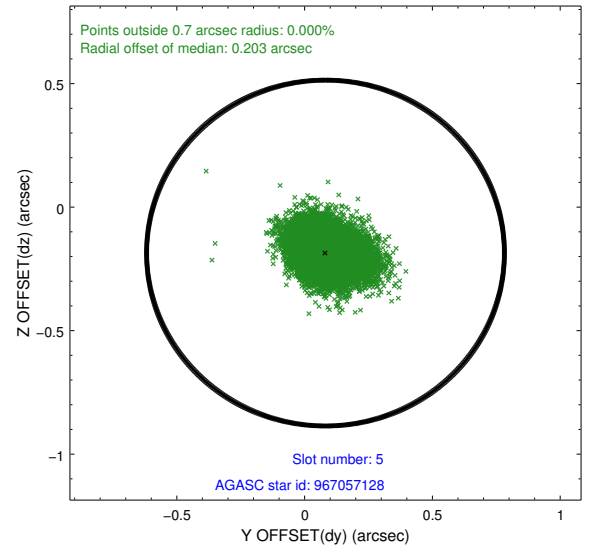
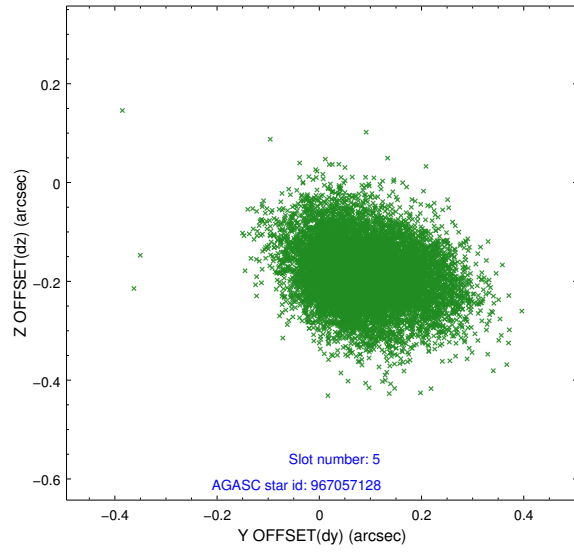
2.4.1 Slot 3



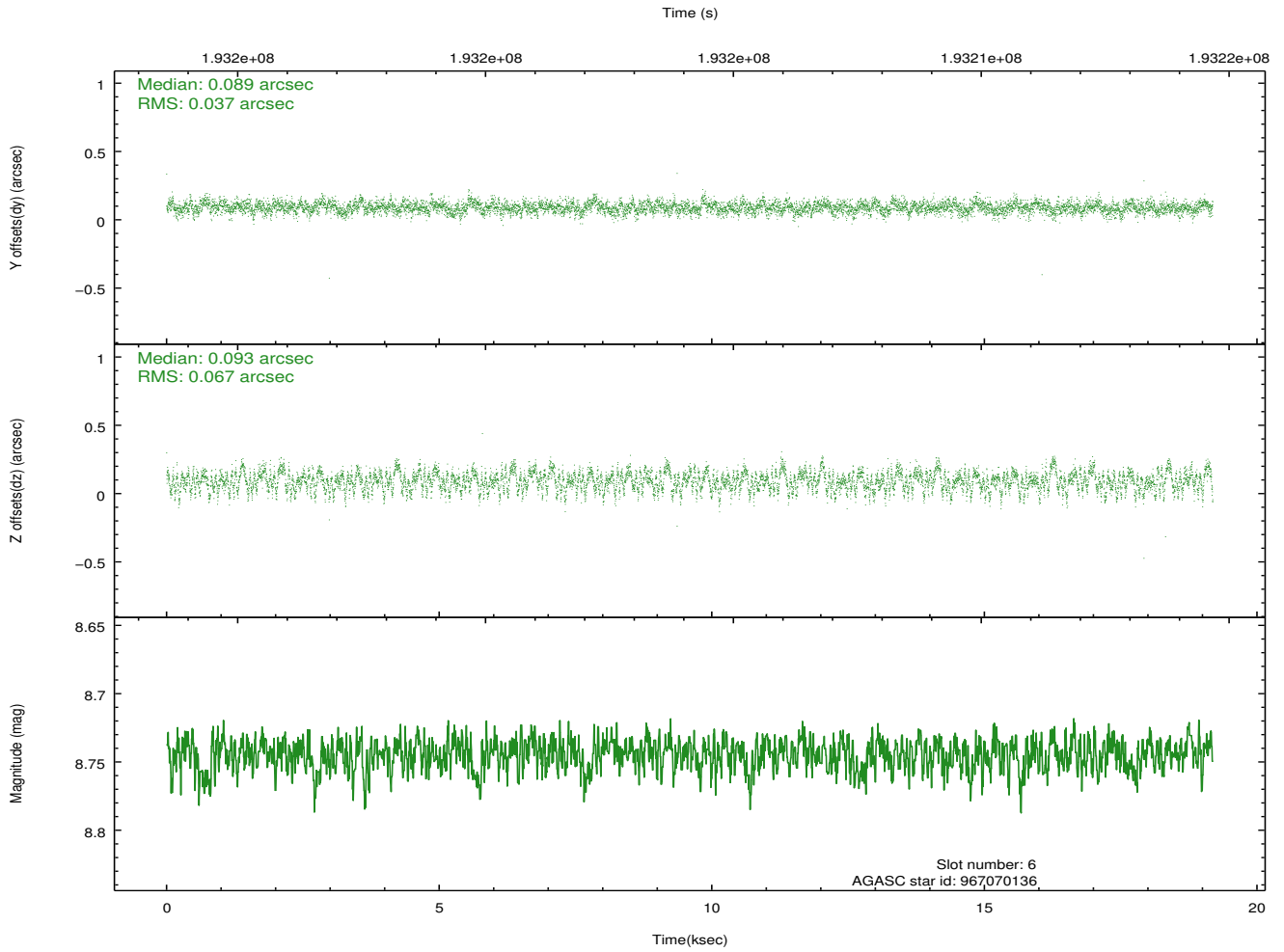
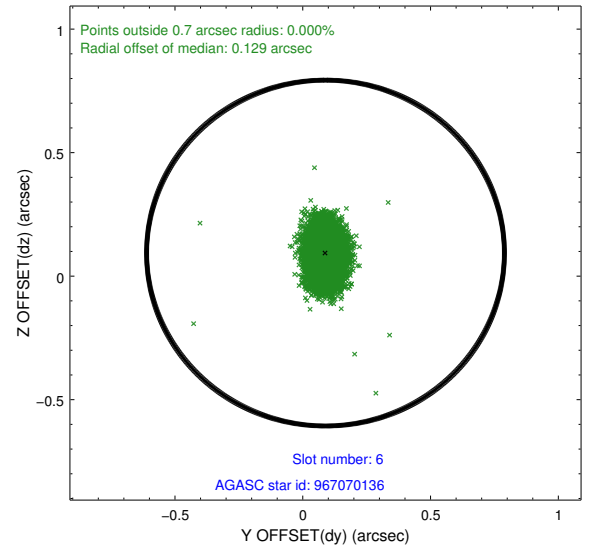
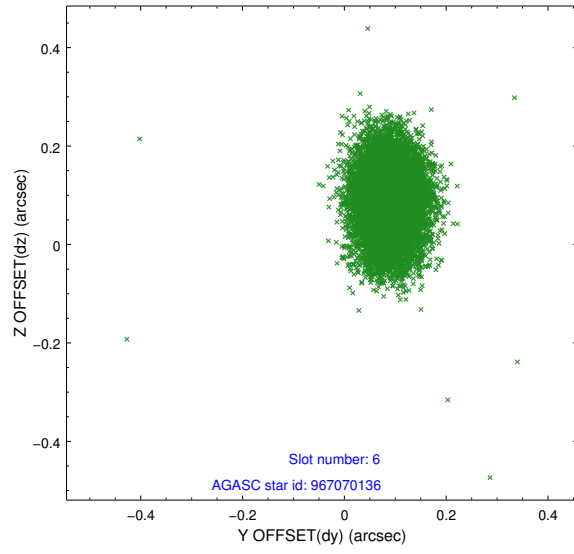
2.4.2 Slot 4



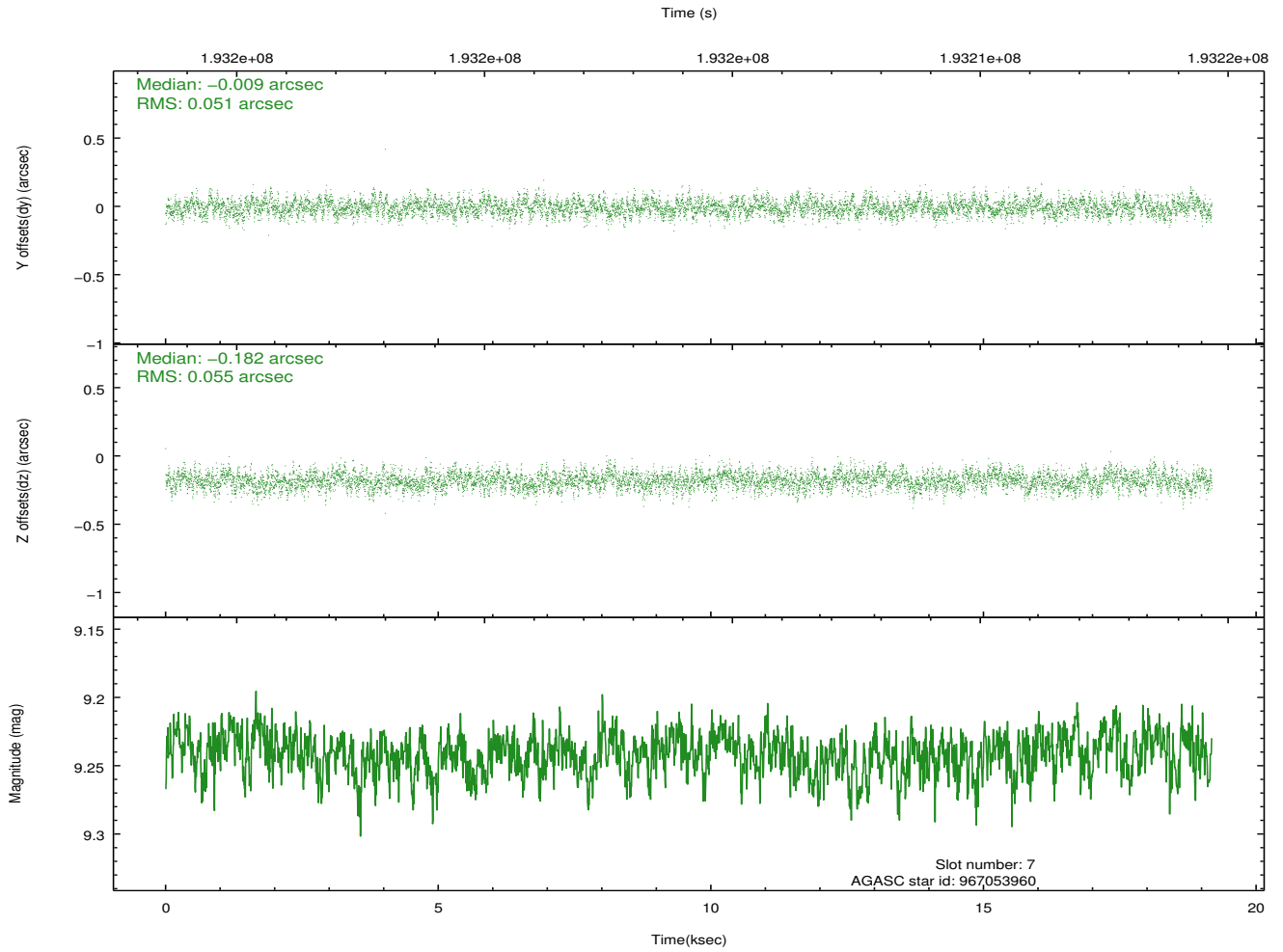
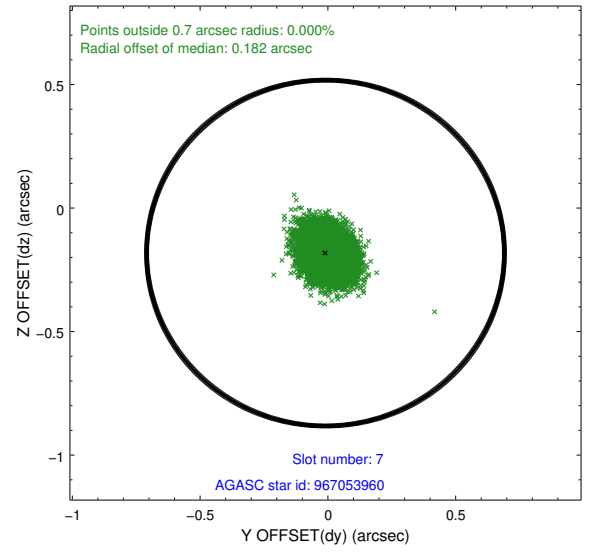
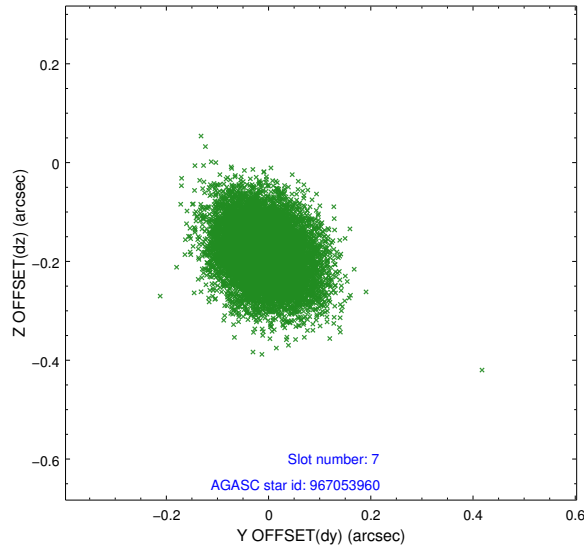
2.4.3 Slot 5



2.4.4 Slot 6

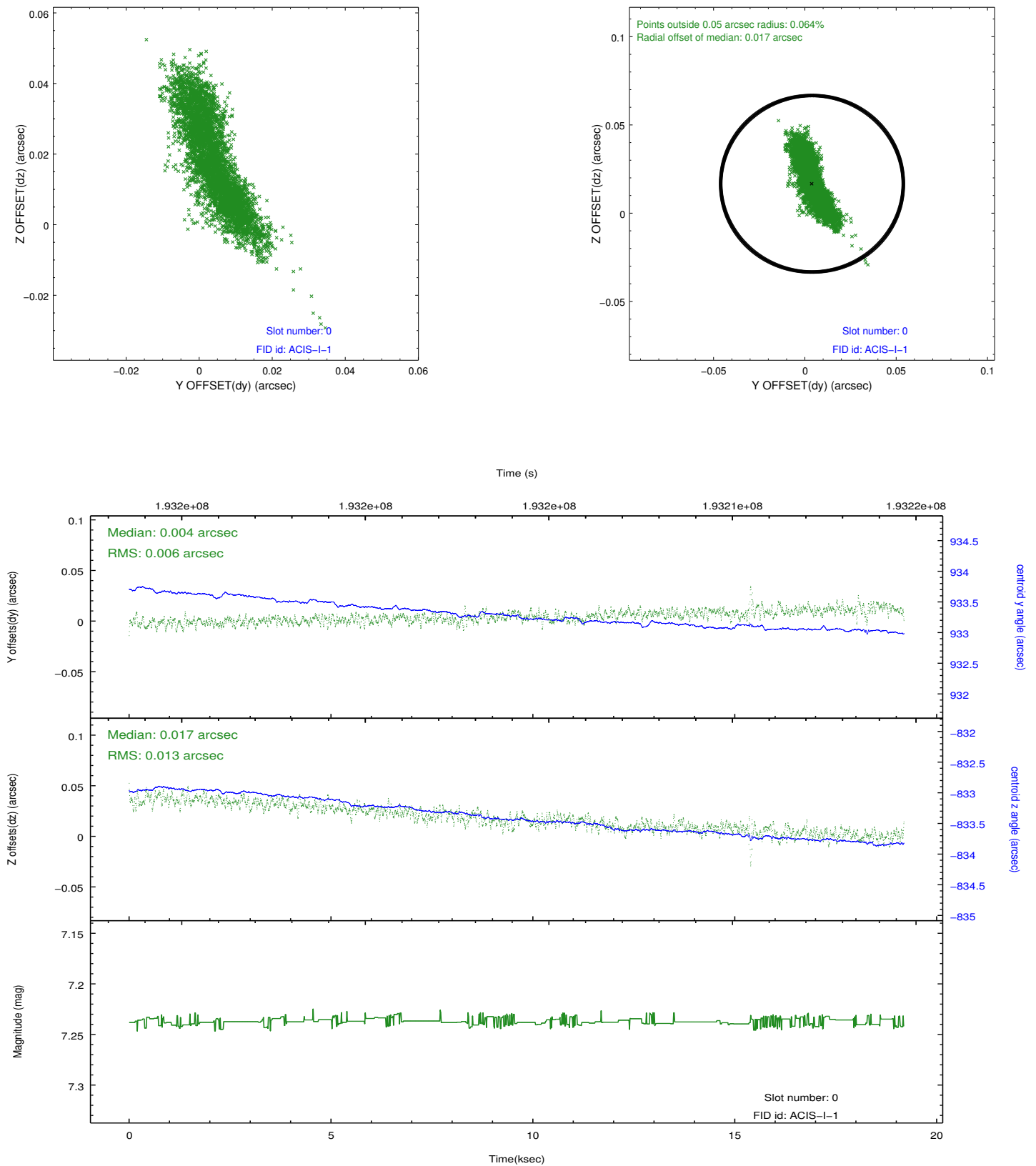


2.4.5 Slot 7

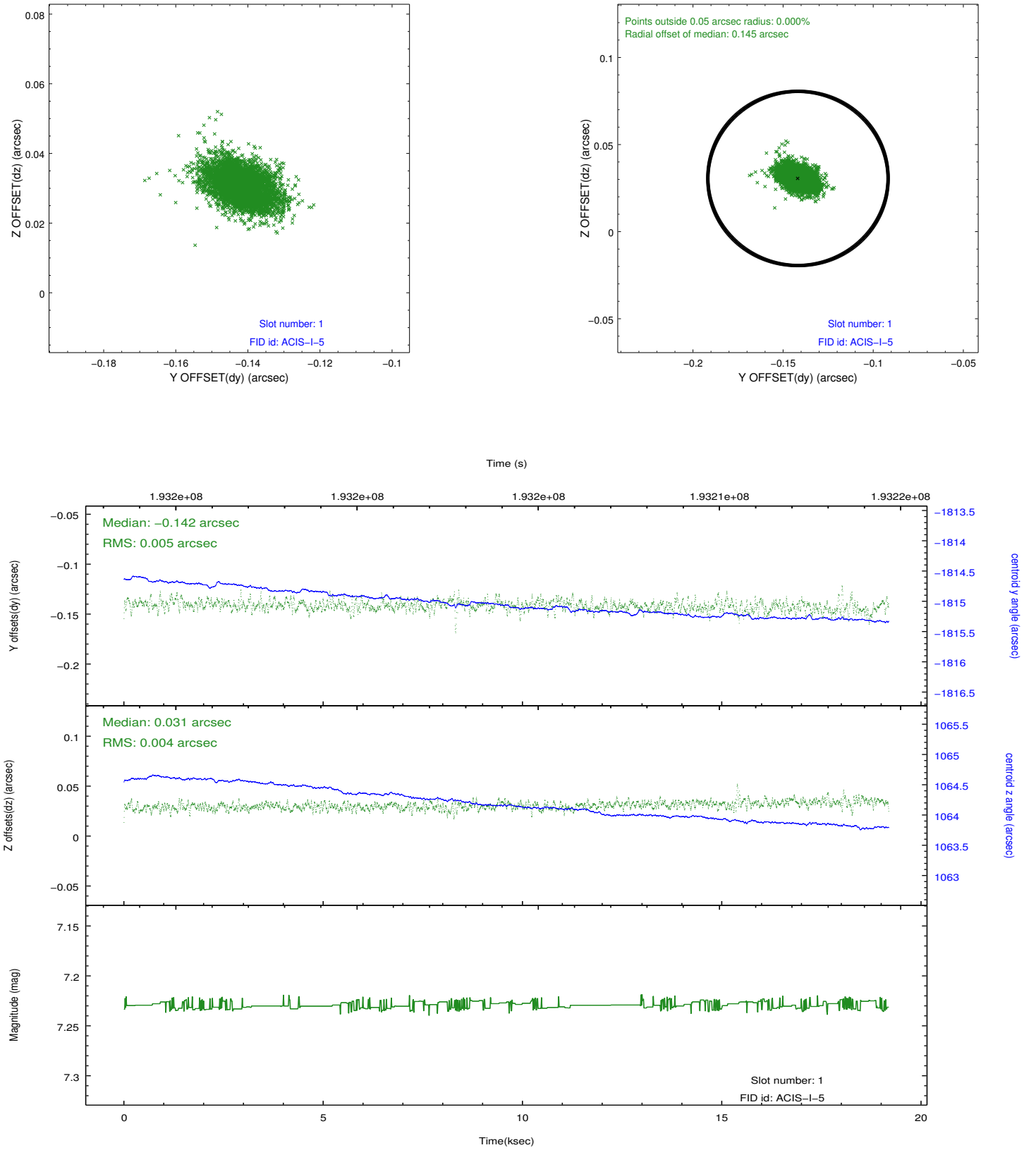


2.5 FID Slots

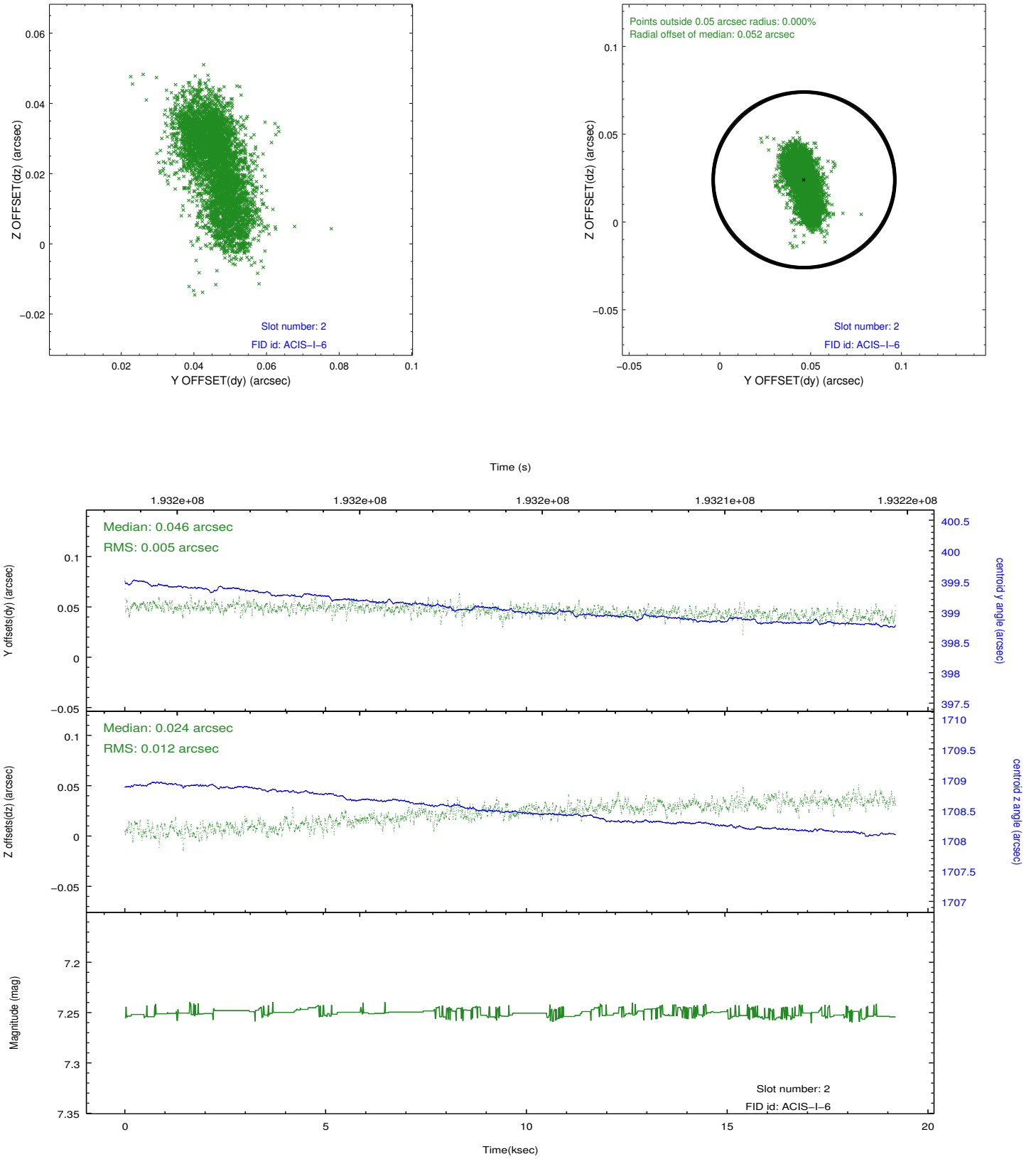
2.5.1 Slot 0



2.5.2 Slot 1



2.5.3 Slot 2



A Summary

A.1 Status

V&V Scientist	Jen Lauer
V&V Date (YYYY-MM-DD)	2012.12.11
V&V Edition	1
V&V Disposition and Status	OK
V&V Charge Time	18.755

A.2 Comments

Joint Proposal: HST