

V&V Reference Report

L2 ASCDS Version : 8.4.5

Observation 4523 - L2 Version 4
Chandra X-Ray Center

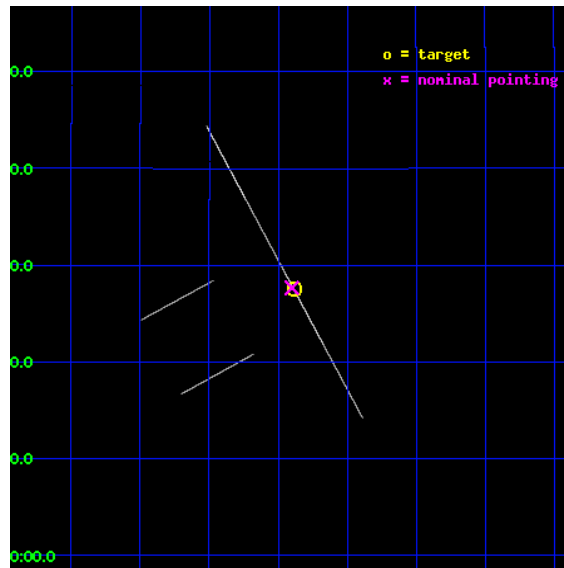
L2 Processing Date : Nov 10 2012

Contents

1	Front	2
2	OBI	3
2.1	OBI	3
2.1.1	Images	3
2.1.2	Parameters	4
2.1.3	Events	4
2.2	Compared Parameters	5
2.3	Aspect	6
2.4	Star Slots	9
2.4.1	Slot 3	9
2.4.2	Slot 4	10
2.4.3	Slot 5	11
2.4.4	Slot 6	12
2.4.5	Slot 7	13
2.5	FID Slots	14
2.5.1	Slot 0	14
2.5.2	Slot 1	15
2.5.3	Slot 2	16
A	Summary	17
A.1	Status	17
A.2	Comments	17

1 Front

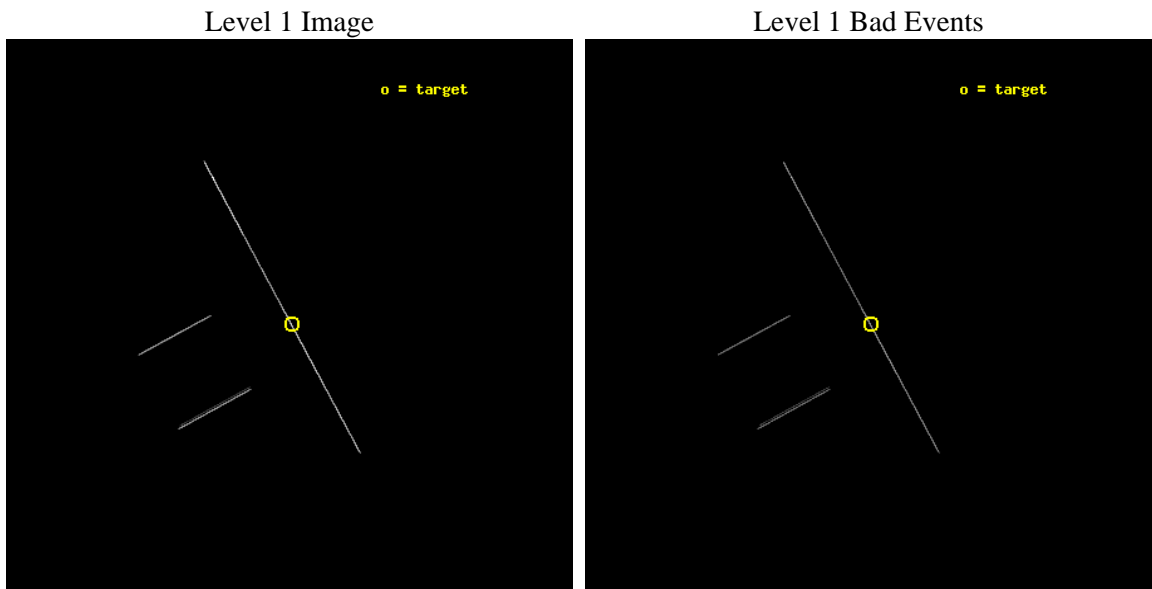
seq_num	300117	Sequence number
obs_id	4523	Observation id
title	Timing the Orbit of RX J0806.3+1527	Proposal title
observer	Dr. Tod Strohmayer	Principal investigator
object	RX J0806.3+1527	Source name
ra_targ	121.596667	Observer's specified target RA [deg]
dec_targ	15.458389	Observer's specified target Dec [deg]
ra_nom	121.60019443116	Nominal RA [deg]
dec_nom	15.461170035454	Nominal Dec [deg]
roll_nom	61.530814534747	Nominal Roll [deg]
revision	4	Processing version of data
ontime	19517.25	Sum of GTIs [s]
livetime	19441.010742188	Livetime [s]
ontime2	19517.25	Sum of GTIs [s]
ontime3	19517.25	Sum of GTIs [s]
ontime5	19517.25	Sum of GTIs [s]
ontime6	19517.25	Sum of GTIs [s]
ontime7	19517.25	Sum of GTIs [s]
ontime8	19517.25	Sum of GTIs [s]
l2events	225662	Number of level 2 events



2 OBI

2.1 OBI

2.1.1 Images



2.1.2 Parameters

obi_num	0	Obi number	sched_exp_time	19000.000000	[s] Scheduled observation exposure time
ascdsver	8.4.5	Processing system revision	ontime	19517.25	Sum of GTIs [s]
caldsver	4.5.2	 	ontime2	19517.25	Sum of GTIs [s]
date	2012-11-10T03:05:04	Date and time of file creation	ontime3	19517.25	Sum of GTIs [s]
revision	4	Processing version of data	ontime5	19517.25	Sum of GTIs [s]
			ontime6	19517.25	Sum of GTIs [s]
			ontime7	19517.25	Sum of GTIs [s]
			ontime8	19517.25	Sum of GTIs [s]
			l1events	346933	Number of level 1 events

2.1.3 Events

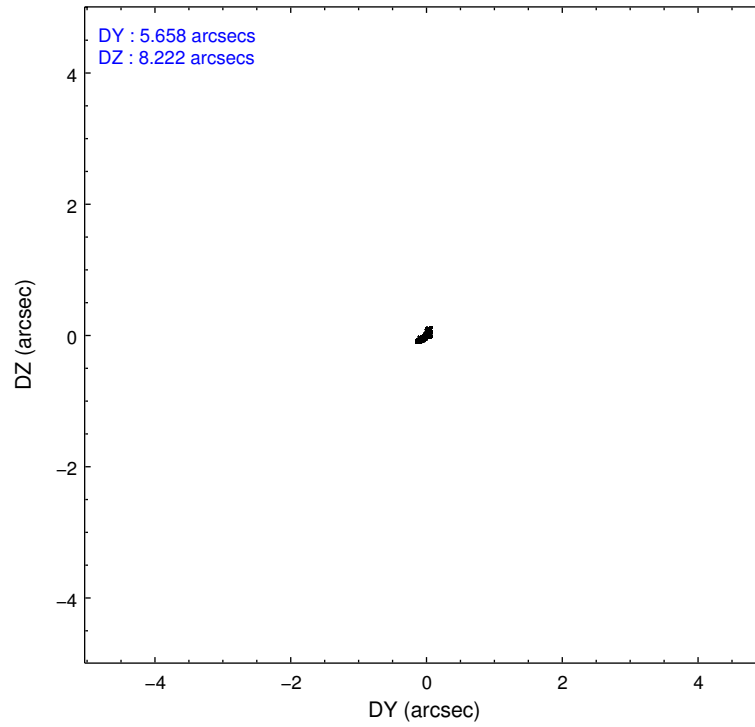
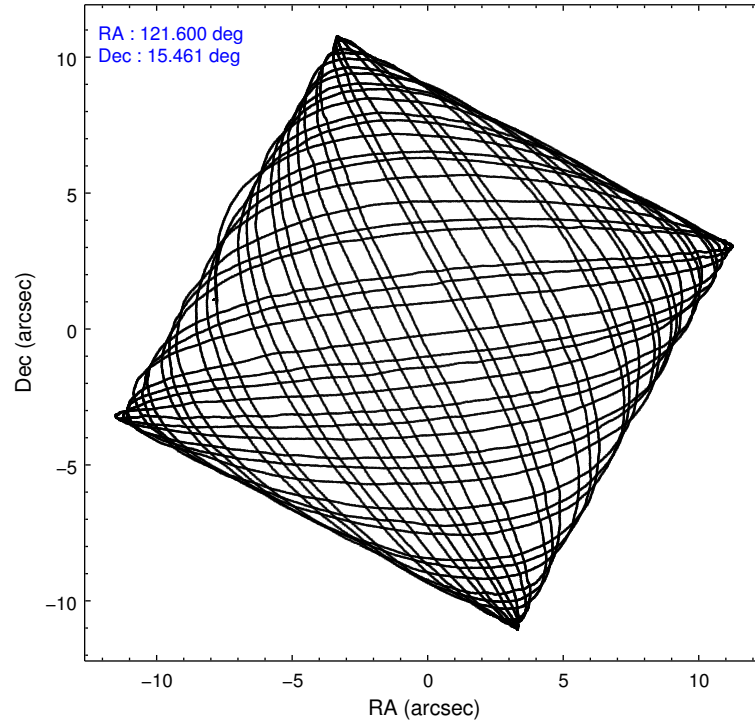
	ccd 2	ccd 3	ccd 5	ccd 6	ccd 7	ccd 8
level 1 events	24732	26072	130163	26337	88317	51312
rejected events	4899	5315	13145	5718	14430	8828
rejected %	19%	20%	10%	21%	16%	17%

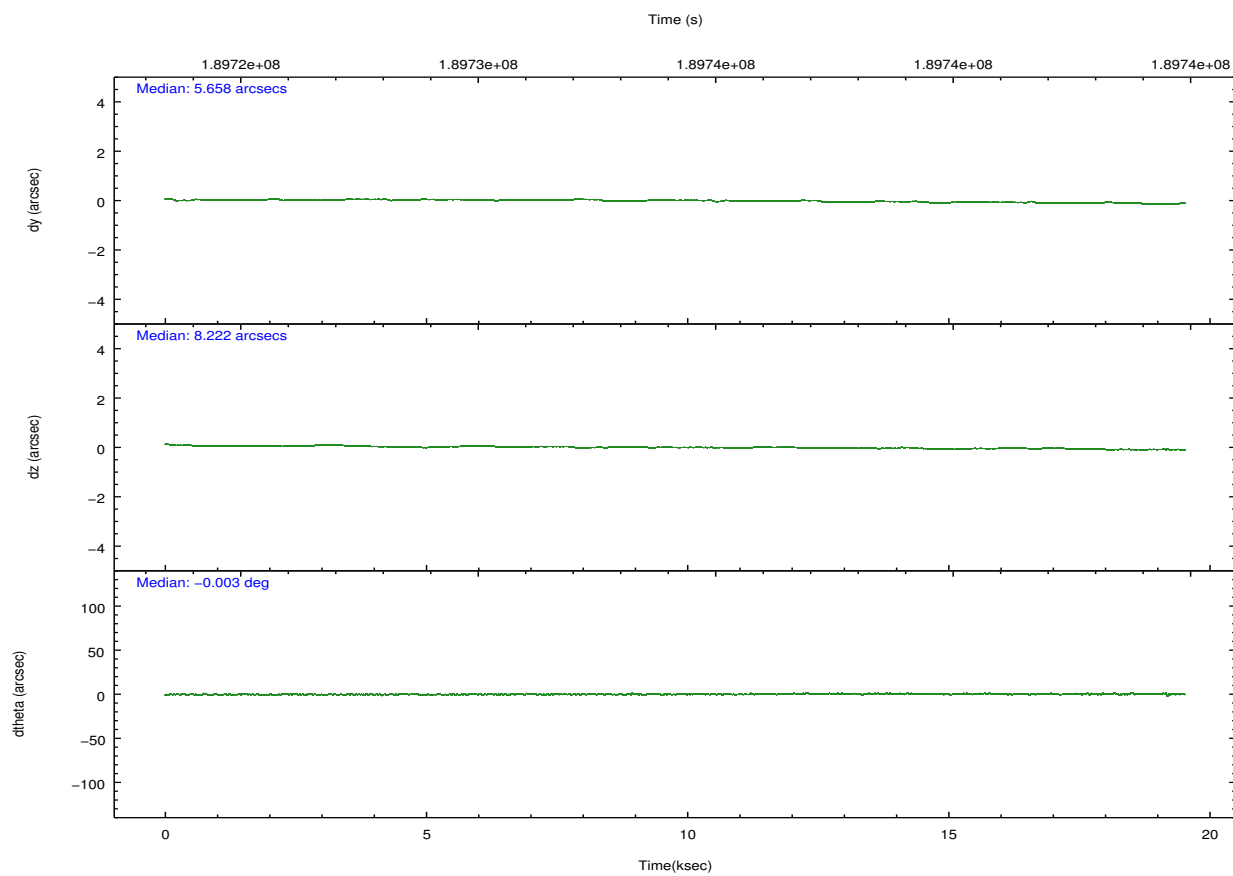
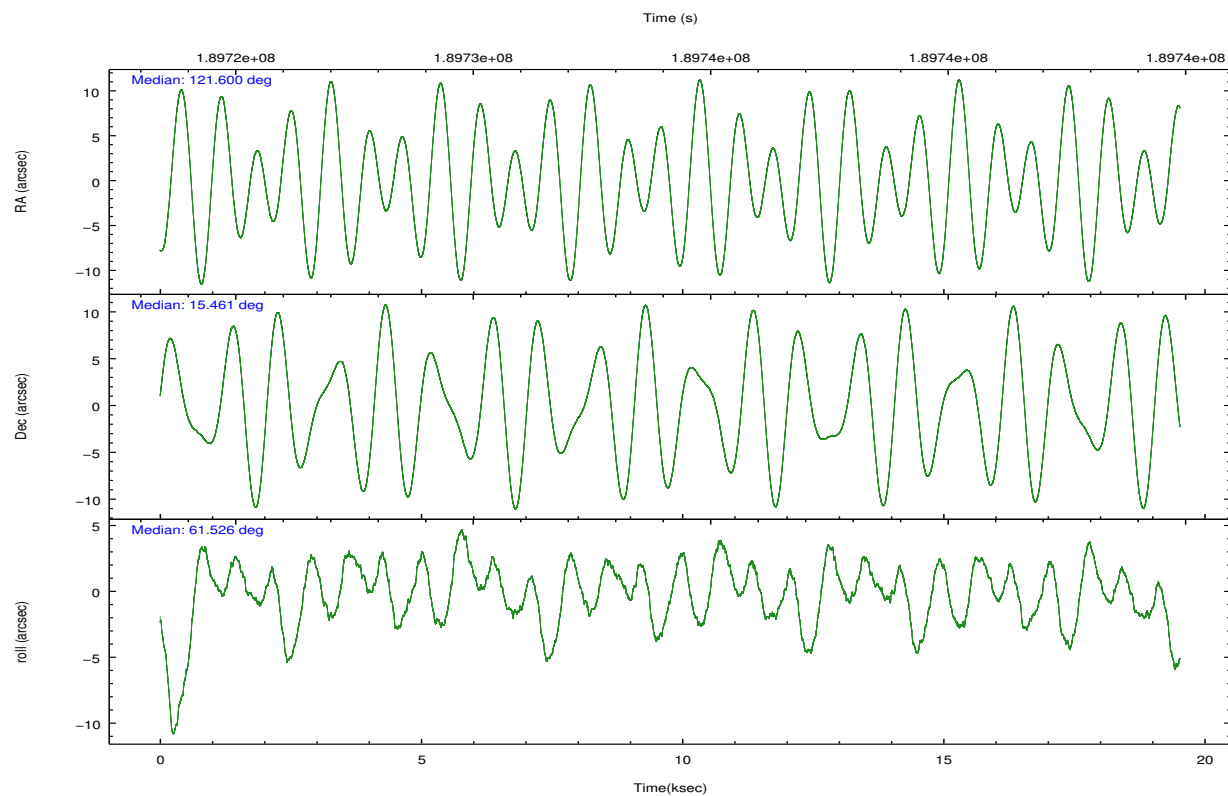
	ccd 2	ccd 3	ccd 5	ccd 6	ccd 7	ccd 8
grade 0 events	2445	2383	31909	2403	7636	7817
	9%	9%	24%	9%	8%	15%
grade 1 events	89	86	138	80	139	162
	0%	0%	0%	0%	0%	0%
grade 2 events	8151	8417	31038	8211	19187	14389
	32%	32%	23%	31%	21%	28%
grade 3 events	2534	3004	1953	2616	3271	4739
	10%	11%	1%	9%	3%	9%
grade 4 events	2612	2490	1887	2514	3304	4626
	10%	9%	1%	9%	3%	9%
grade 5 events	4308	4650	9450	5058	12363	7280
	17%	17%	7%	19%	13%	14%
grade 6 events	4593	5042	53788	5455	42417	12299
	18%	19%	41%	20%	48%	23%
grade 7 events	0	0	0	0	0	0
	0%	0%	0%	0%	0%	0%

2.2 Compared Parameters

Parameter	Planned	Actual	Parameter	Planned	Actual
Instrument	ACIS	ACIS	Obspar format version number	7	7
Detector	ACIS-235678	ACIS-235678	Obspar file type	PREDICTED	ACTUAL
Grating	NONE	NONE	Obspar update status	NONE	UPDATED
Data mode	CC33_GRADED	CC33_GRADED	Number of optional ACIS chips dropped	0	0
Observation mode	POINTING	POINTING	On-chip summing requested	N	N
[deg] Pointing RA	121.601329	121.6001944311643	Subarray requested	NONE	NONE
[deg] Pointing Dec	15.433912	15.46117003545367	Alternating exposures requested	N	N
[deg] Pointing Roll	61.373885	61.53081453474717	[s] Primary exposure time	0.000000	0
[mm] SIM focus pos	-0.684267	-0.6828225247311905			
[mm] SIM defocus	0	0.001444936568705701			
[mm] SIM translation stage pos	-190.132523	-190.1400660498719			
[mm] SIM translation stage offset	0	0.00754346686406393			
[s] Observation start time (MET)	189724903.184000	189723770.52878			
Observation start date	2004-01-05T21:20:39	2004-01-05T21:02:50			
[s] Observation end time (MET)	189743903.184000	189744435.55468			
Observation end date	2004-01-06T02:37:19	2004-01-06T02:47:15			
Read mode	CONTINUOUS	CONTINUOUS			

2.3 Aspect



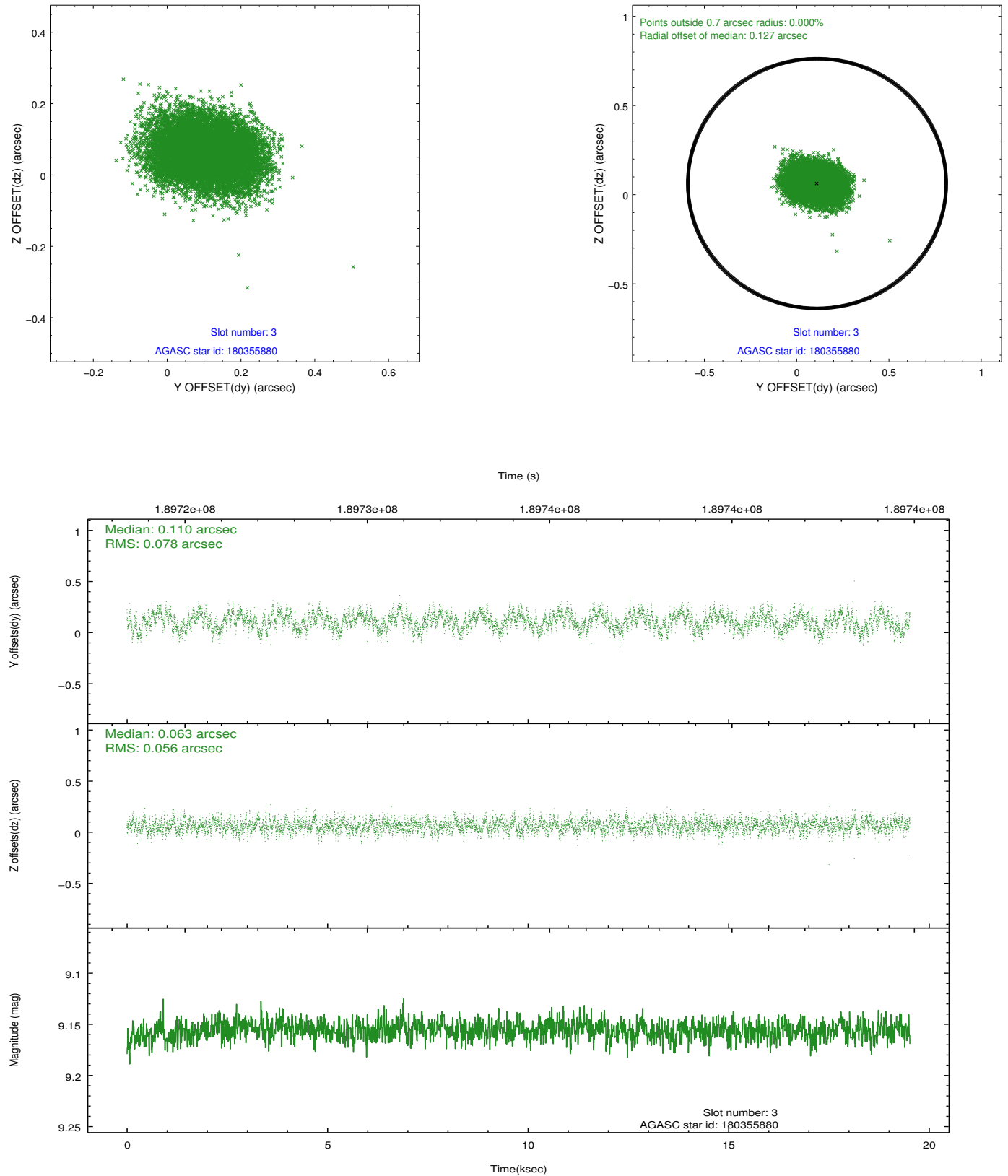


Slot Statistics

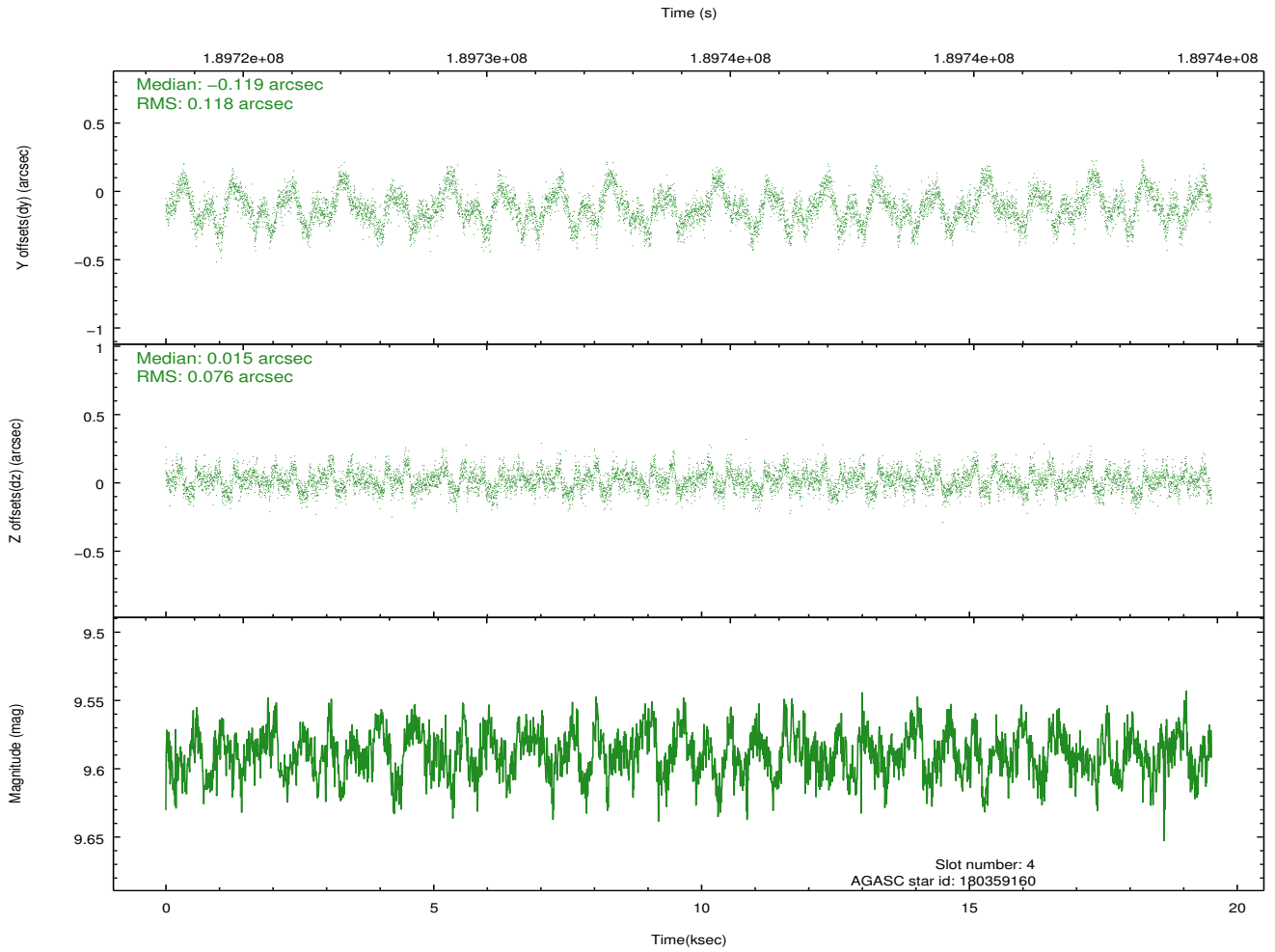
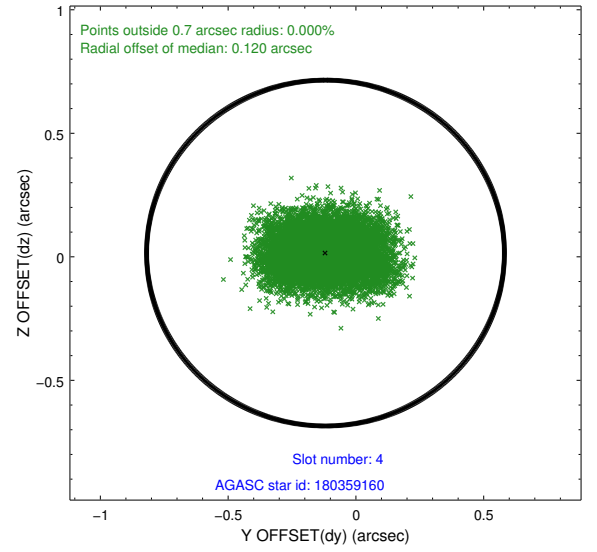
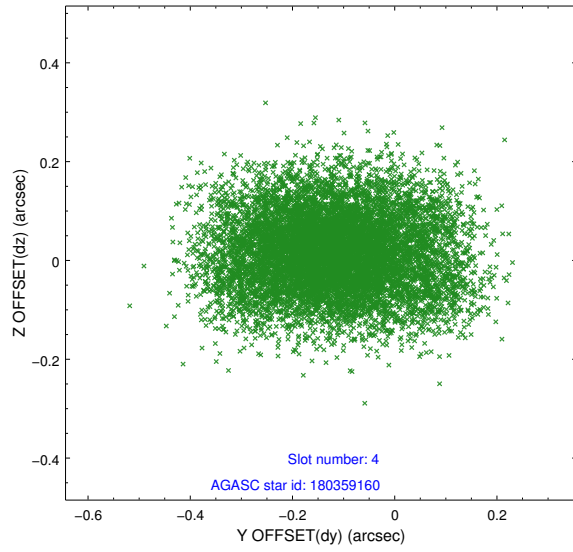
slot	status	id	mag	n_pts	med_dy	med_dz	dr1	dr2	ra	dec	mean_y	mean_z
0	FID	ACIS-S-1	7.18	4762	0.045	-0.020	0.009	0.026	0.000000	0.000000	937.66	-1725.10
1	FID	ACIS-S-5	7.23	4762	-0.081	0.036	0.009	0.024	0.000000	0.000000	-1811.28	172.42
2	FID	ACIS-S-6	7.35	4762	0.015	-0.004	0.009	0.021	0.000000	0.000000	403.07	816.47
3	GUIDE	180355880	9.16	9524	0.110	0.063	0.103	0.163	120.943434	15.103820	-2135.56	1439.48
4	GUIDE	180359160	9.59	9523	-0.119	0.015	0.150	0.246	121.837257	16.020694	2245.36	296.12
5	GUIDE	180367416	9.14	9516	-0.021	-0.185	0.089	0.138	120.920648	15.525818	-837.44	2232.61
6	GUIDE	180370112	8.38	9524	-0.047	0.096	0.074	0.118	121.144488	15.364256	-979.83	1273.15
7	GUIDE	180372496	7.92	9524	0.074	0.010	0.064	0.100	121.745221	15.155380	-640.46	-919.13

2.4 Star Slots

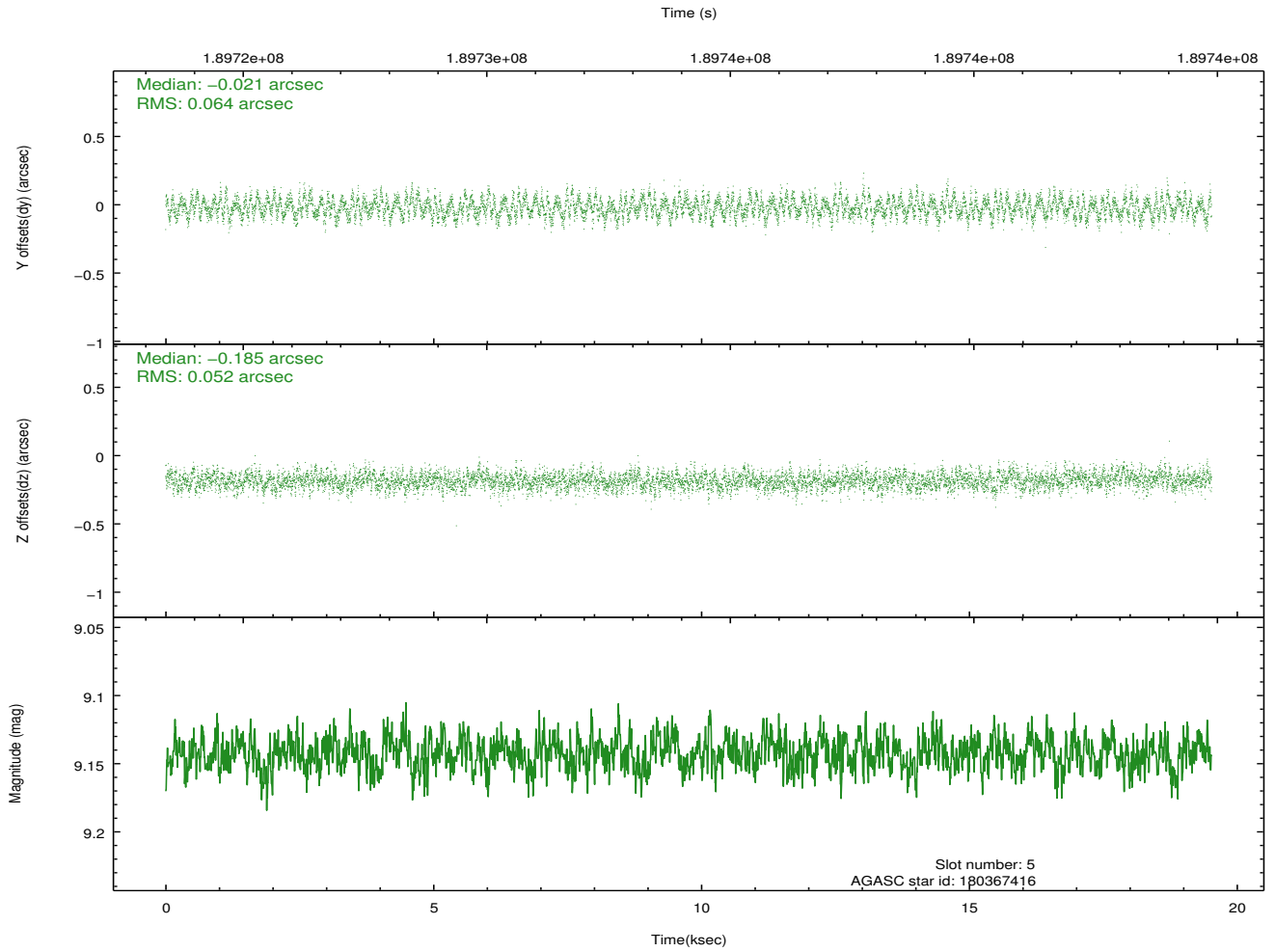
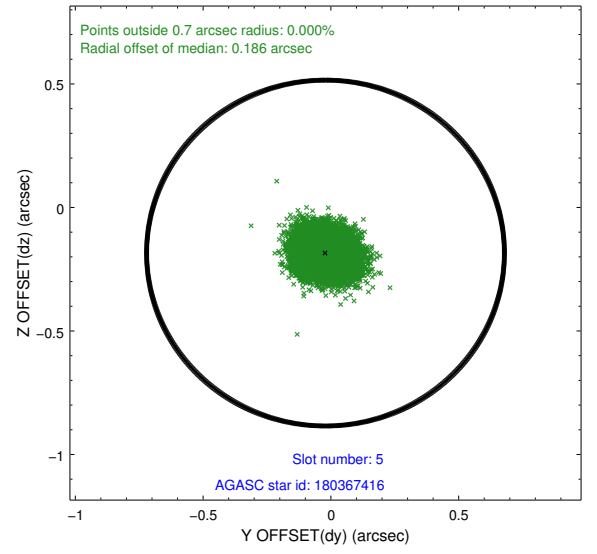
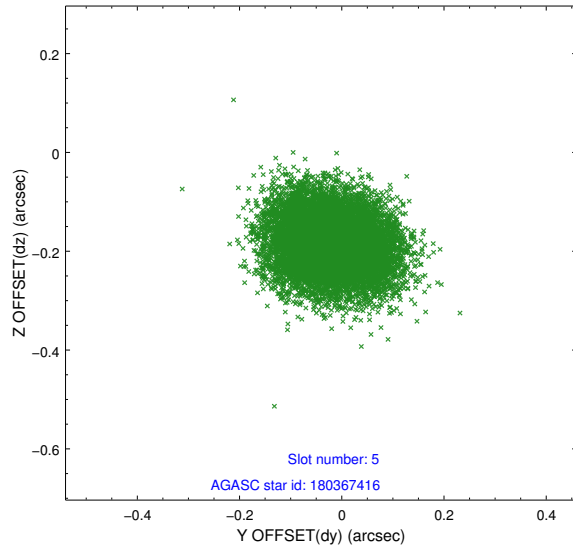
2.4.1 Slot 3



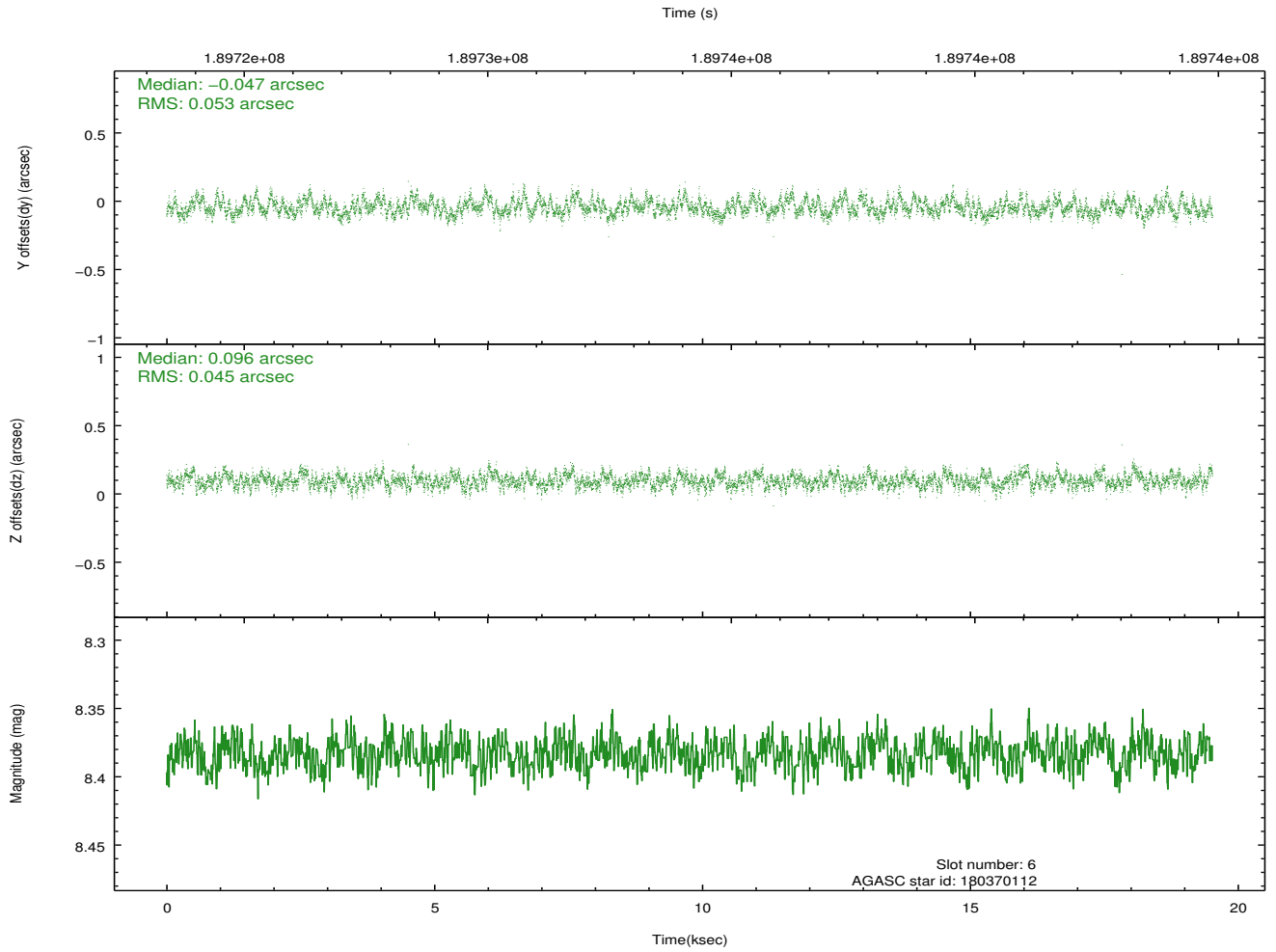
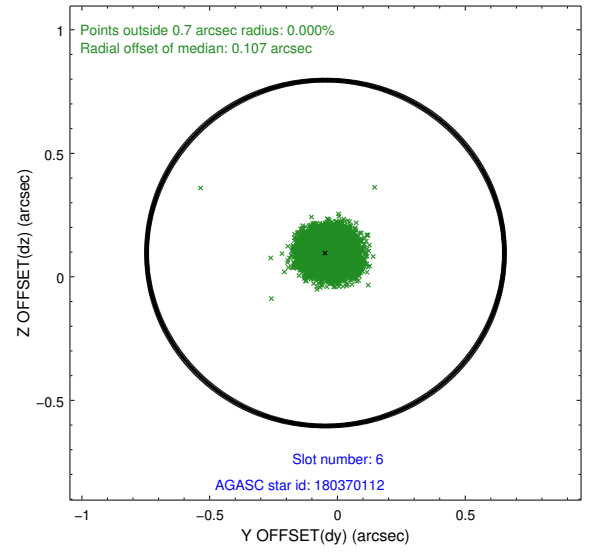
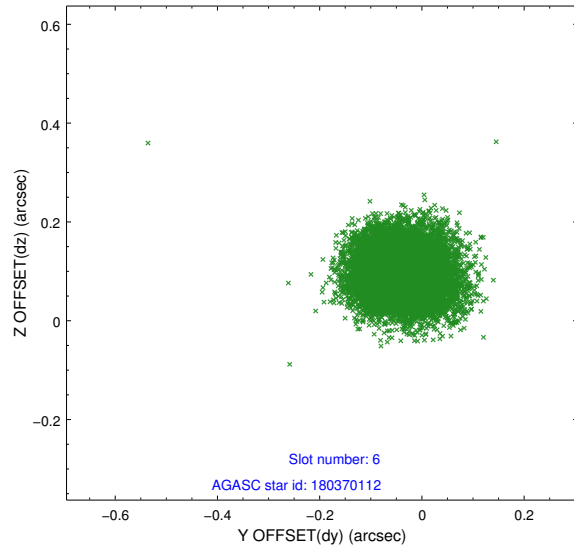
2.4.2 Slot 4



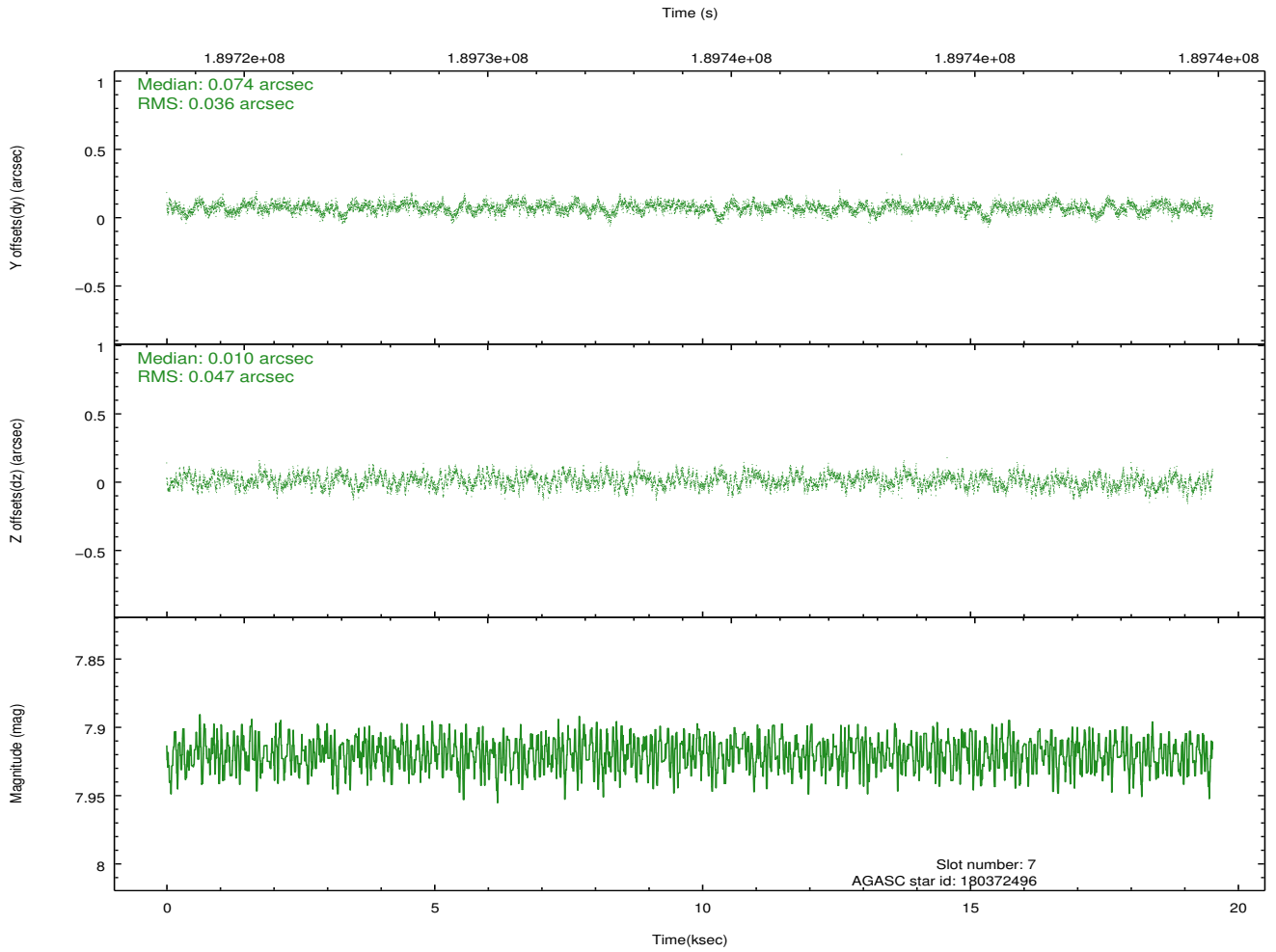
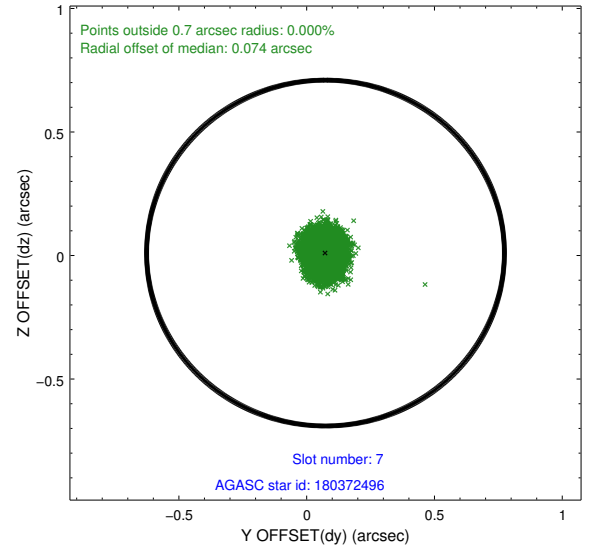
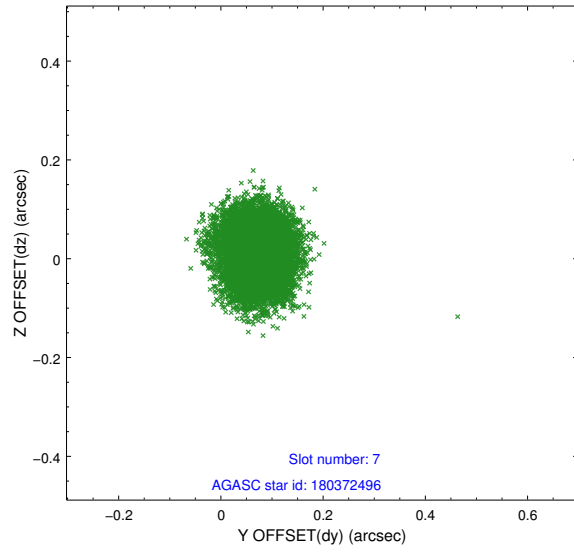
2.4.3 Slot 5



2.4.4 Slot 6

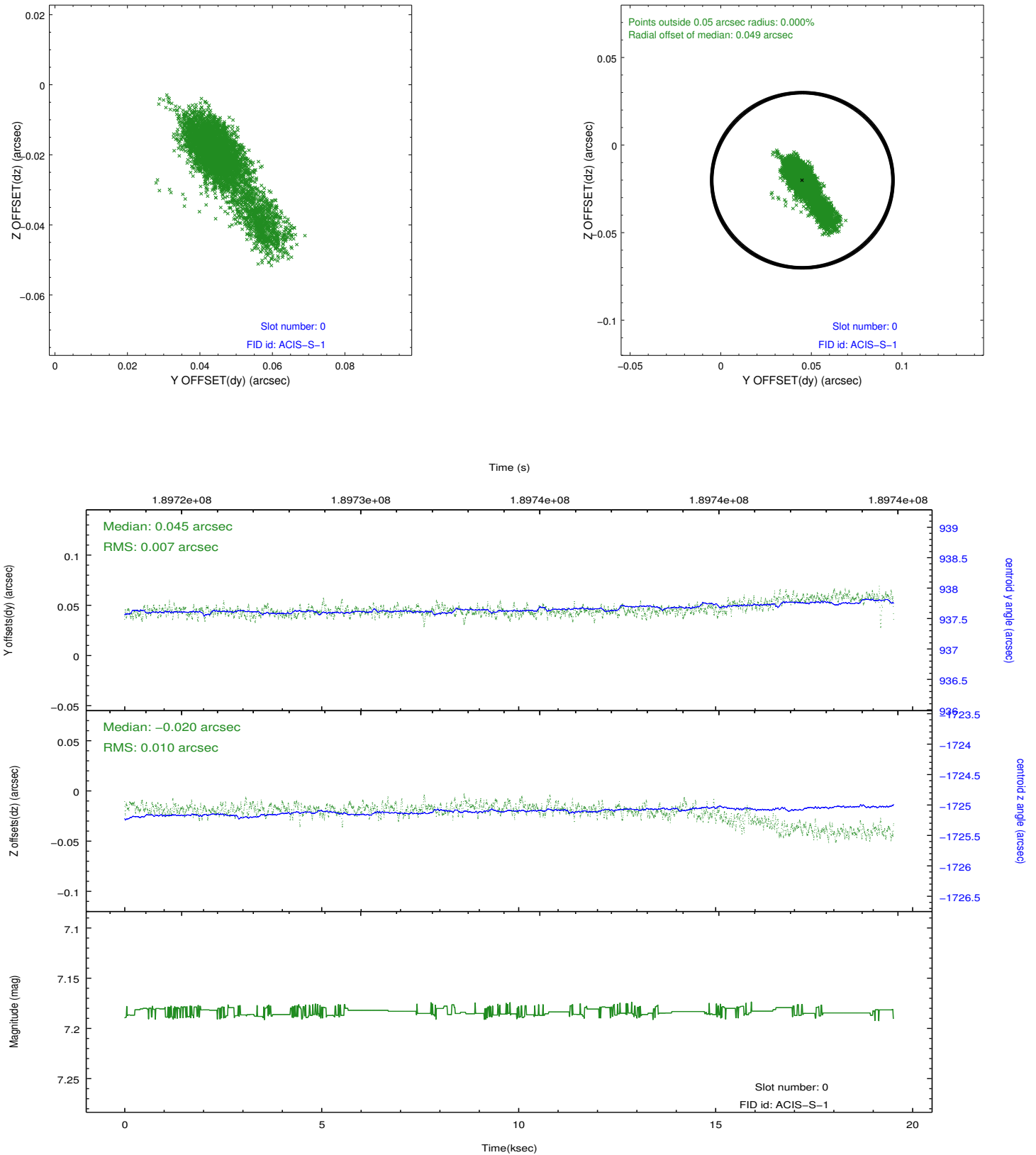


2.4.5 Slot 7

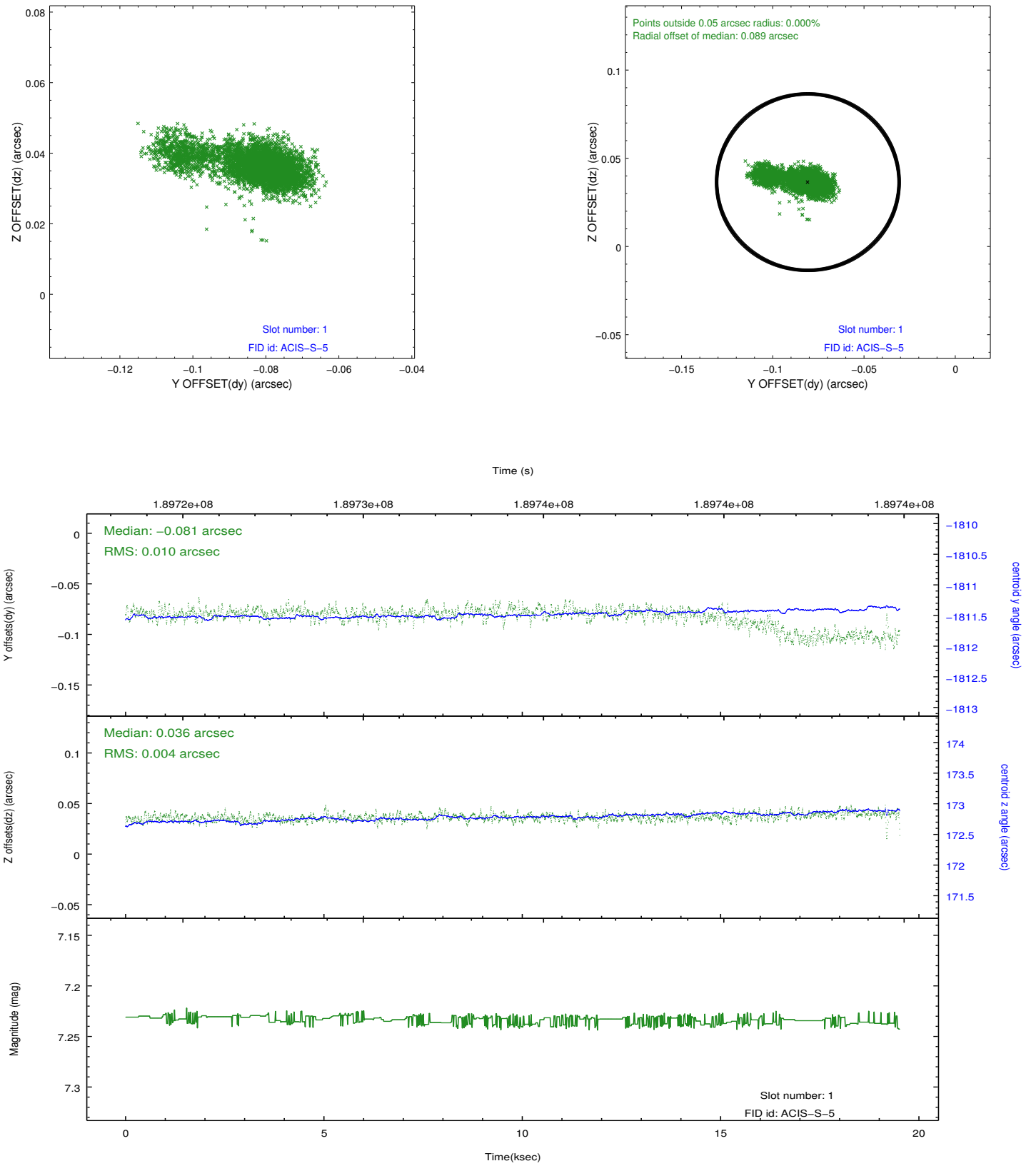


2.5 FID Slots

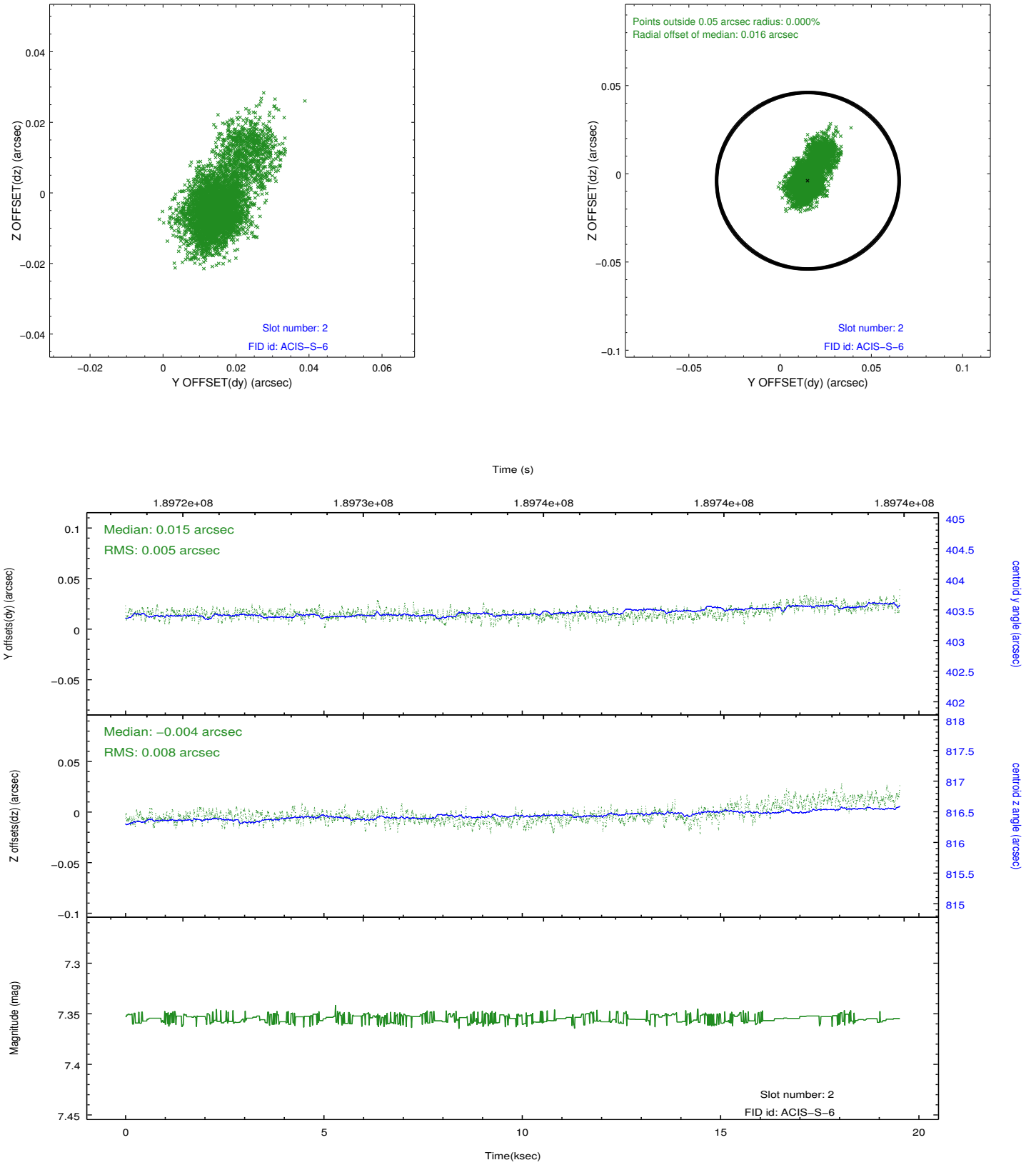
2.5.1 Slot 0



2.5.2 Slot 1



2.5.3 Slot 2



A Summary

A.1 Status

V&V Scientist	Joy Nichols
V&V Date (YYYY-MM-DD)	2012.12.12
V&V Edition	1
V&V Disposition and Status	OK
V&V Charge Time	19.521

A.2 Comments