

V&V Reference Report

L2 ASCDS Version : 8.5

Observation 4522 - L2 Version 4
Chandra X-Ray Center

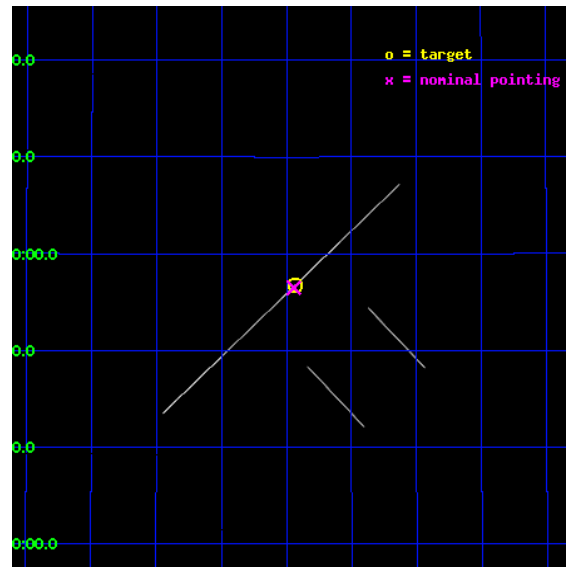
L2 Processing Date : Dec 12 2012

Contents

1	Front	2
2	OBI	3
2.1	OBI	3
2.1.1	Images	3
2.1.2	Parameters	4
2.1.3	Events	4
2.2	Compared Parameters	5
2.3	Aspect	6
2.4	Star Slots	9
2.4.1	Slot 3	9
2.4.2	Slot 4	10
2.4.3	Slot 5	11
2.4.4	Slot 6	12
2.4.5	Slot 7	13
2.5	FID Slots	14
2.5.1	Slot 0	14
2.5.2	Slot 1	15
2.5.3	Slot 2	16
A	Summary	17
A.1	Status	17
A.2	Comments	17

1 Front

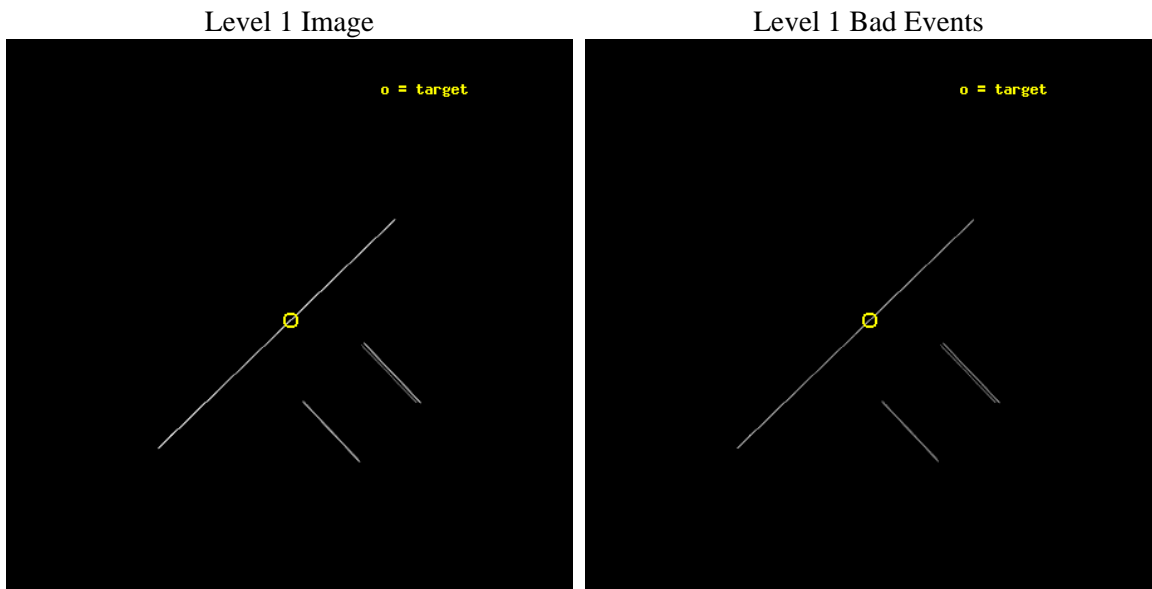
seq_num	300116	Sequence number
obs_id	4522	Observation id
title	Continued Monitoring of the Orbital Evolution of RX J1914.4+2456	P
observer	Dr. Tod Strohmayer	Principal investigator
object	RX J1914.4+2456	Source name
ra_targ	288.60875	Observer's specified target RA [deg]
dec_targ	24.945444	Observer's specified target Dec [deg]
ra_nom	288.61067765804	Nominal RA [deg]
dec_nom	24.941411248088	Nominal Dec [deg]
roll_nom	316.25851121852	Nominal Roll [deg]
revision	4	Processing version of data
ontime	15140.0	Sum of GTIs [s]
livetime	15080.859375	Livetime [s]
ontime2	15140.0	Sum of GTIs [s]
ontime3	15140.0	Sum of GTIs [s]
ontime5	15140.0	Sum of GTIs [s]
ontime6	15140.0	Sum of GTIs [s]
ontime7	15140.0	Sum of GTIs [s]
ontime8	15140.0	Sum of GTIs [s]
l2events	215682	Number of level 2 events



2 OBI

2.1 OBI

2.1.1 Images



2.1.2 Parameters

obi_num	0	Obi number	sched_exp_time	15000.000000	[s] Scheduled observation exposure time
ascdsver	8.5	Processing system revision	ontime	15140.0	Sum of GTIs [s]
caldsver	4.5.4	 	ontime2	15140.0	Sum of GTIs [s]
date	2012-12-12T11:13:29	Date and time of file creation	ontime3	15140.0	Sum of GTIs [s]
revision	4	Processing version of data	ontime5	15140.0	Sum of GTIs [s]
			ontime6	15140.0	Sum of GTIs [s]
			ontime7	15140.0	Sum of GTIs [s]
			ontime8	15140.0	Sum of GTIs [s]
			l1events	327920	Number of level 1 events

2.1.3 Events

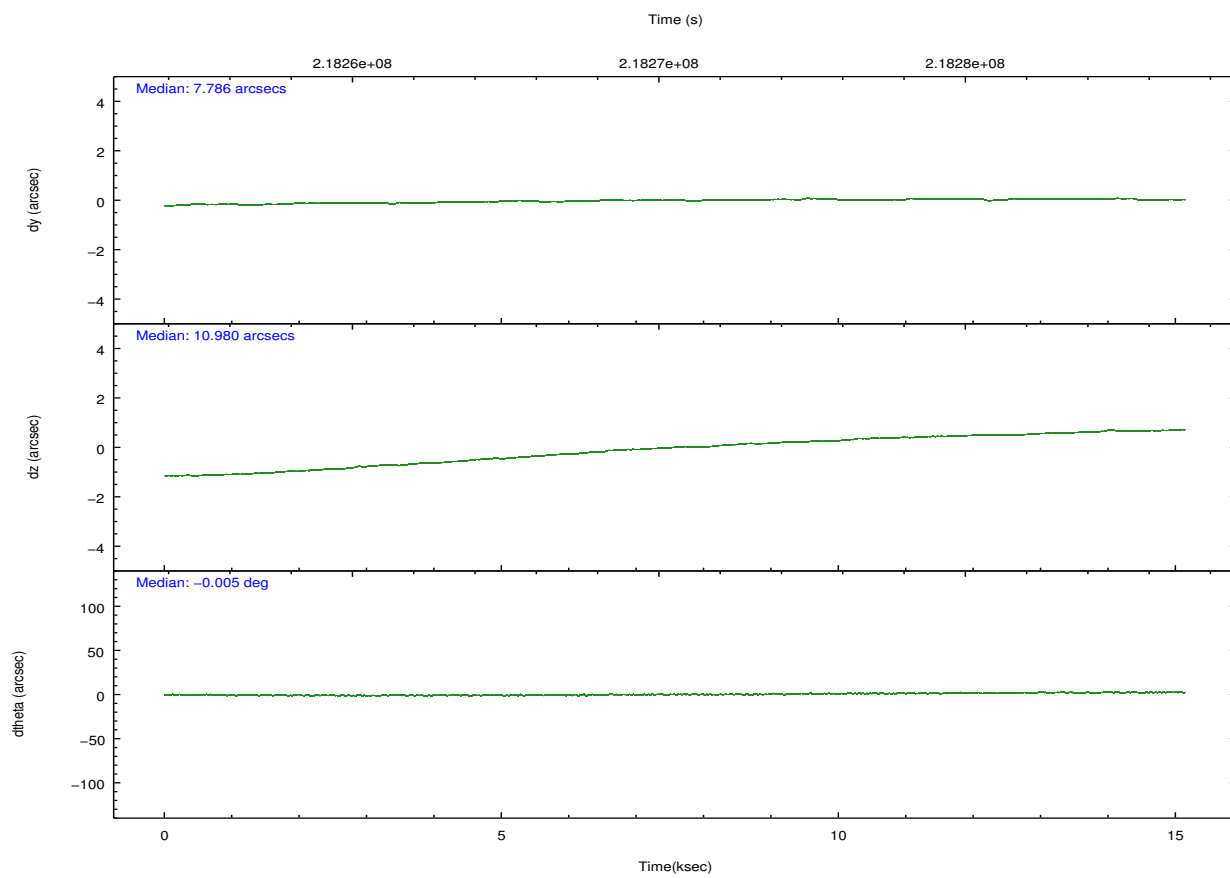
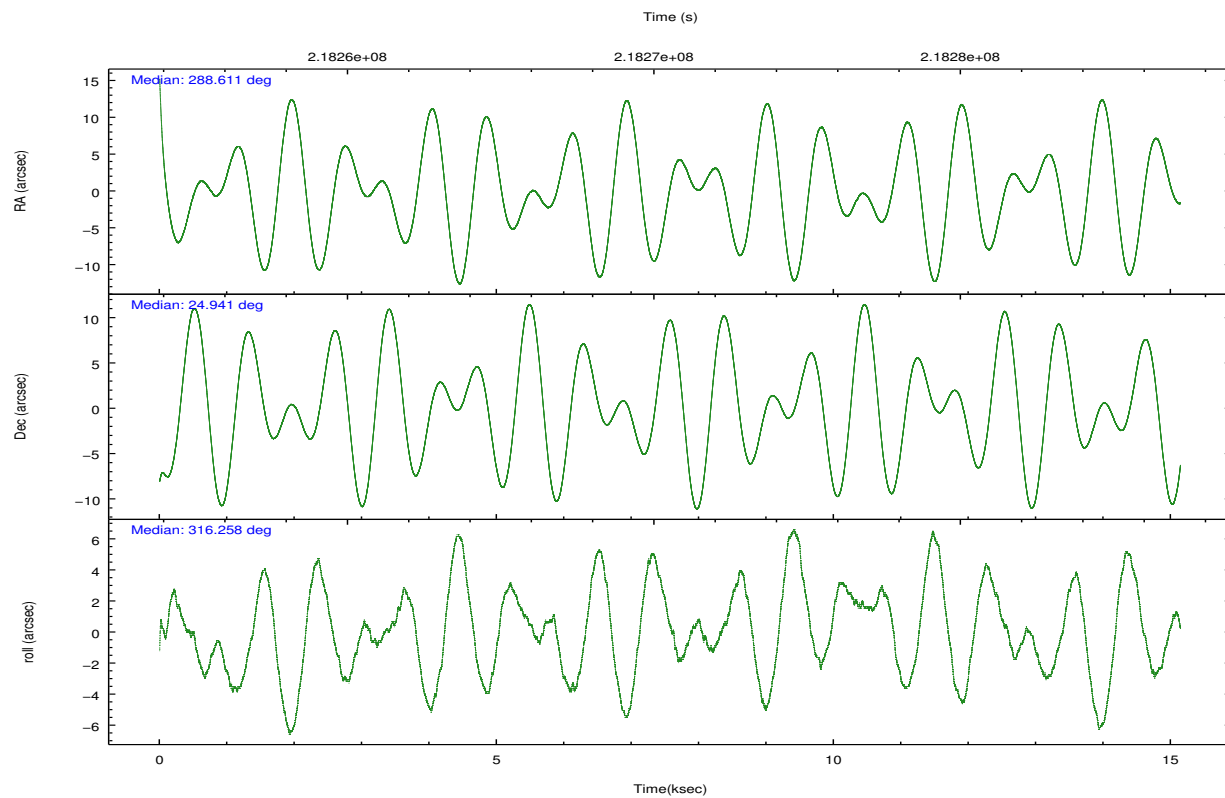
	ccd 2	ccd 3	ccd 5	ccd 6	ccd 7	ccd 8
level 1 events	24140	27148	110685	26052	88975	50920
rejected events	5717	6617	17441	6672	16562	10007
rejected %	23%	24%	15%	25%	18%	19%

	ccd 2	ccd 3	ccd 5	ccd 6	ccd 7	ccd 8
grade 0 events	2479	2636	15634	2264	6829	7770
	10%	9%	14%	8%	7%	15%
grade 1 events	80	111	121	96	148	175
	0%	0%	0%	0%	0%	0%
grade 2 events	7718	8620	28237	7921	20453	13997
	31%	31%	25%	30%	22%	27%
grade 3 events	2379	2951	1917	2586	3677	4846
	9%	10%	1%	9%	4%	9%
grade 4 events	2453	2554	1897	2479	3599	4658
	10%	9%	1%	9%	4%	9%
grade 5 events	4444	5149	9847	5239	12155	7016
	18%	18%	8%	20%	13%	13%
grade 6 events	4587	5127	53032	5467	42114	12458
	19%	18%	47%	20%	47%	24%
grade 7 events	0	0	0	0	0	0
	0%	0%	0%	0%	0%	0%

2.2 Compared Parameters

Parameter	Planned	Actual	Parameter	Planned	Actual
Instrument	ACIS	ACIS	Obspar format version number	7	7
Detector	ACIS-235678	ACIS-235678	Obspar file type	PREDICTED	ACTUAL
Grating	NONE	NONE	Obspar update status	NONE	UPDATED
Data mode	CC33_GRADED	CC33_GRADED	Number of optional ACIS chips dropped	0	0
Observation mode	POINTING	POINTING	On-chip summing requested	N	N
[deg] Pointing RA	288.581407	288.6106776580357	Subarray requested	NONE	NONE
[deg] Pointing Dec	24.947556	24.94141124808814	Alternating exposures requested	N	N
[deg] Pointing Roll	316.114224	316.258511218516	[s] Primary exposure time	0.000000	0
[mm] SIM focus pos	-0.684267	-0.6828225247311905			
[mm] SIM defocus	0	0.001444936568705701			
[mm] SIM translation stage pos	-190.132523	-190.1425803651734			
[mm] SIM translation stage offset	0	0.01005778216563158			
[s] Observation start time (MET)	218262839.184000	218261718.77962			
Observation start date	2004-12-01T04:32:55	2004-12-01T04:15:18			
[s] Observation end time (MET)	218277839.184000	218278423.20538			
Observation end date	2004-12-01T08:42:55	2004-12-01T08:53:43			
Read mode	CONTINUOUS	CONTINUOUS			

2.3 Aspect

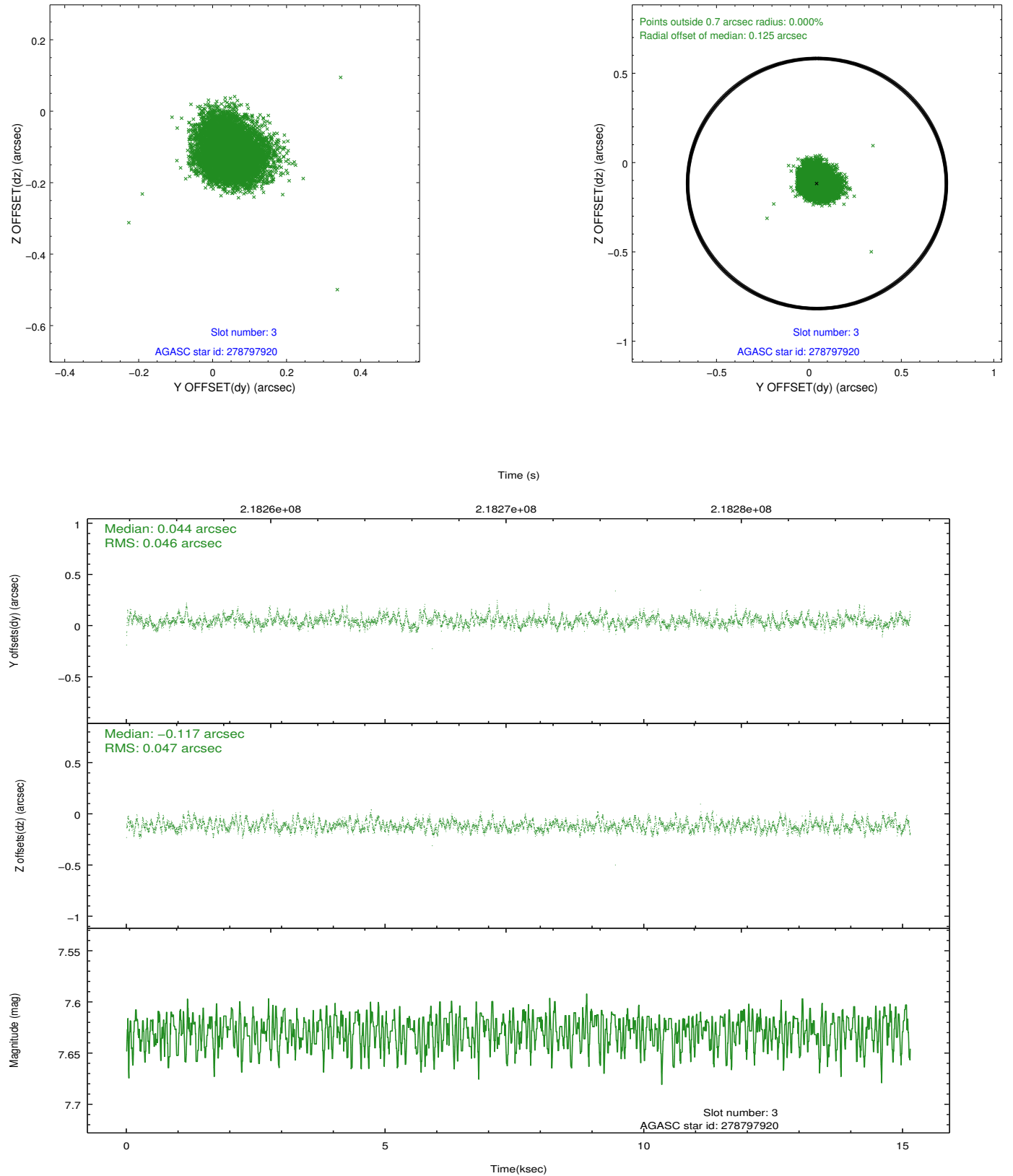


Slot Statistics

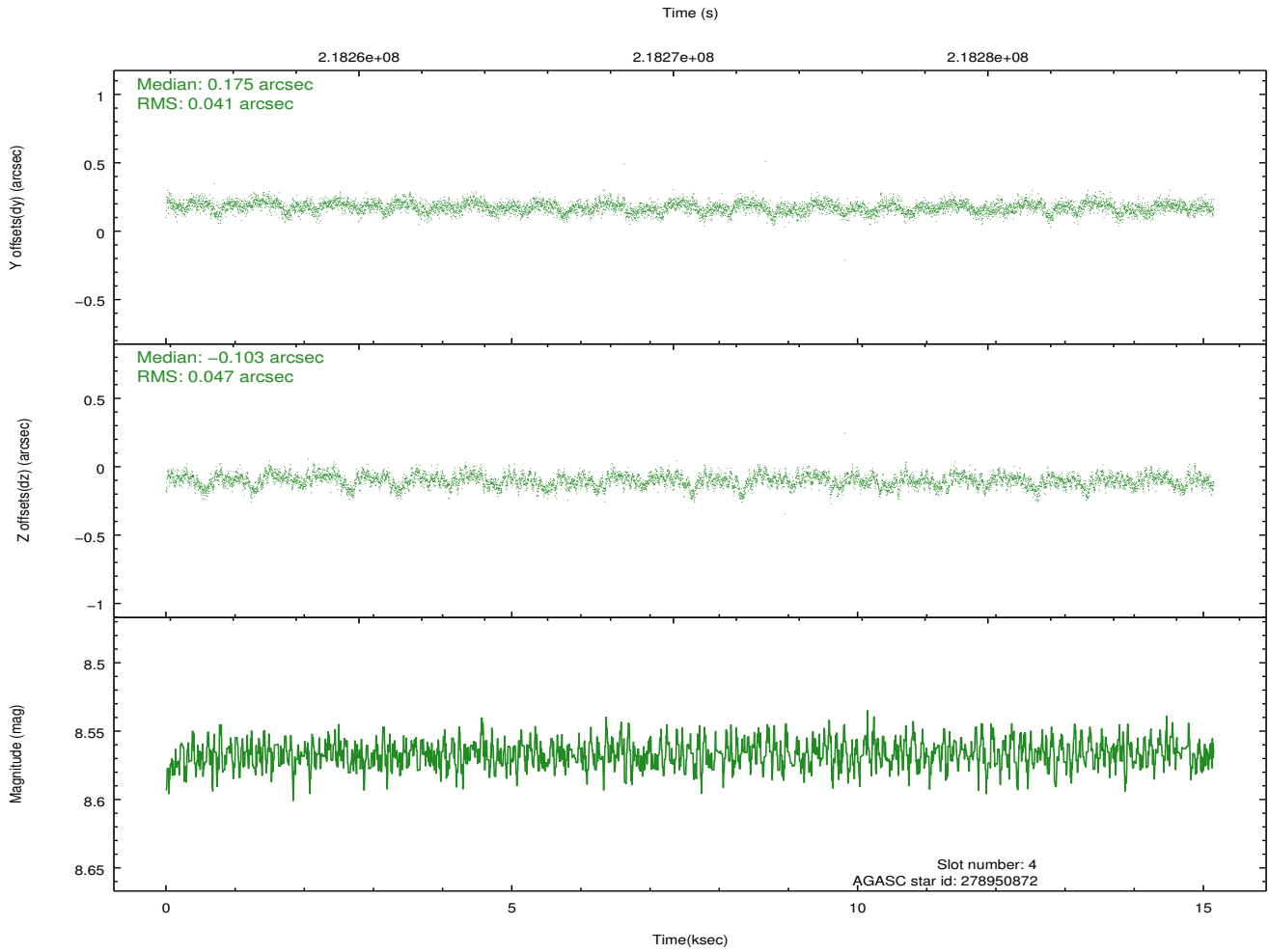
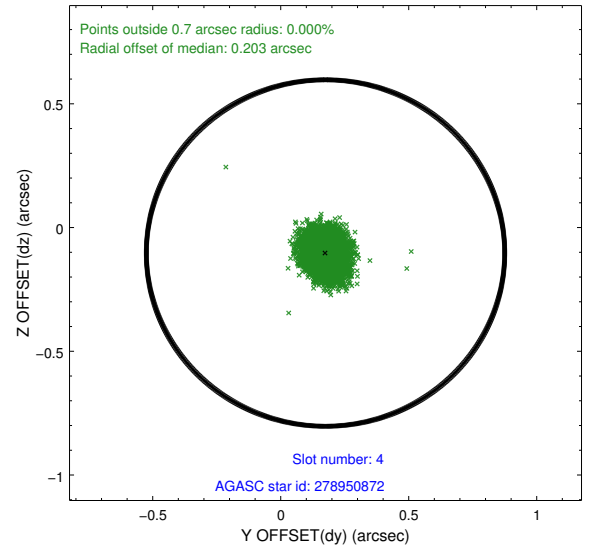
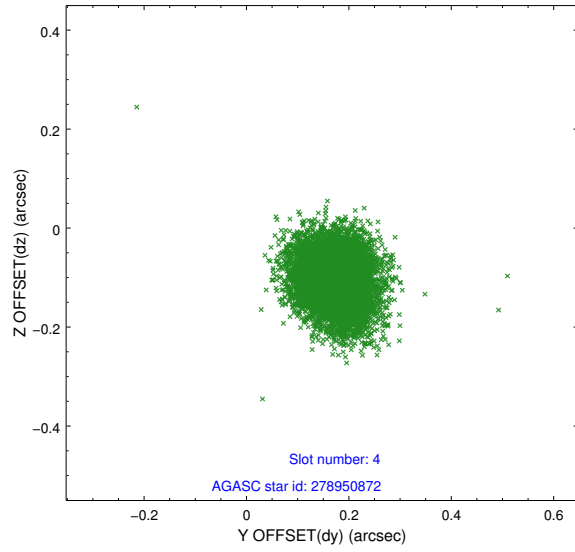
slot	status	id	mag	n_pts	med_dy	med_dz	dr1	dr2	ra	dec	mean_y	mean_z
0	FID	ACIS-S-2	7.10	3694	-0.035	-0.011	0.018	0.031	0.000000	0.000000	-760.53	-1732.11
1	FID	ACIS-S-4	7.21	3694	0.083	0.019	0.018	0.038	0.000000	0.000000	2152.70	176.15
2	FID	ACIS-S-5	7.23	3694	-0.082	0.002	0.011	0.022	0.000000	0.000000	-1813.07	170.08
3	GUIDE	278797920	7.63	7388	0.044	-0.117	0.070	0.111	288.580174	25.013203	-166.40	167.64
4	GUIDE	278950872	8.57	7386	0.175	-0.103	0.065	0.108	288.955805	24.789192	1276.38	438.73
5	GUIDE	278953272	8.37	7387	-0.097	0.194	0.056	0.089	289.216166	24.729034	2038.28	875.77
6	GUIDE	278795448	8.95	7386	-0.087	0.053	0.093	0.147	287.699473	24.798355	-1710.76	-2377.98
7	GUIDE	278808544	8.95	7386	-0.033	-0.027	0.083	0.135	287.819957	25.159250	-2321.36	-1165.90

2.4 Star Slots

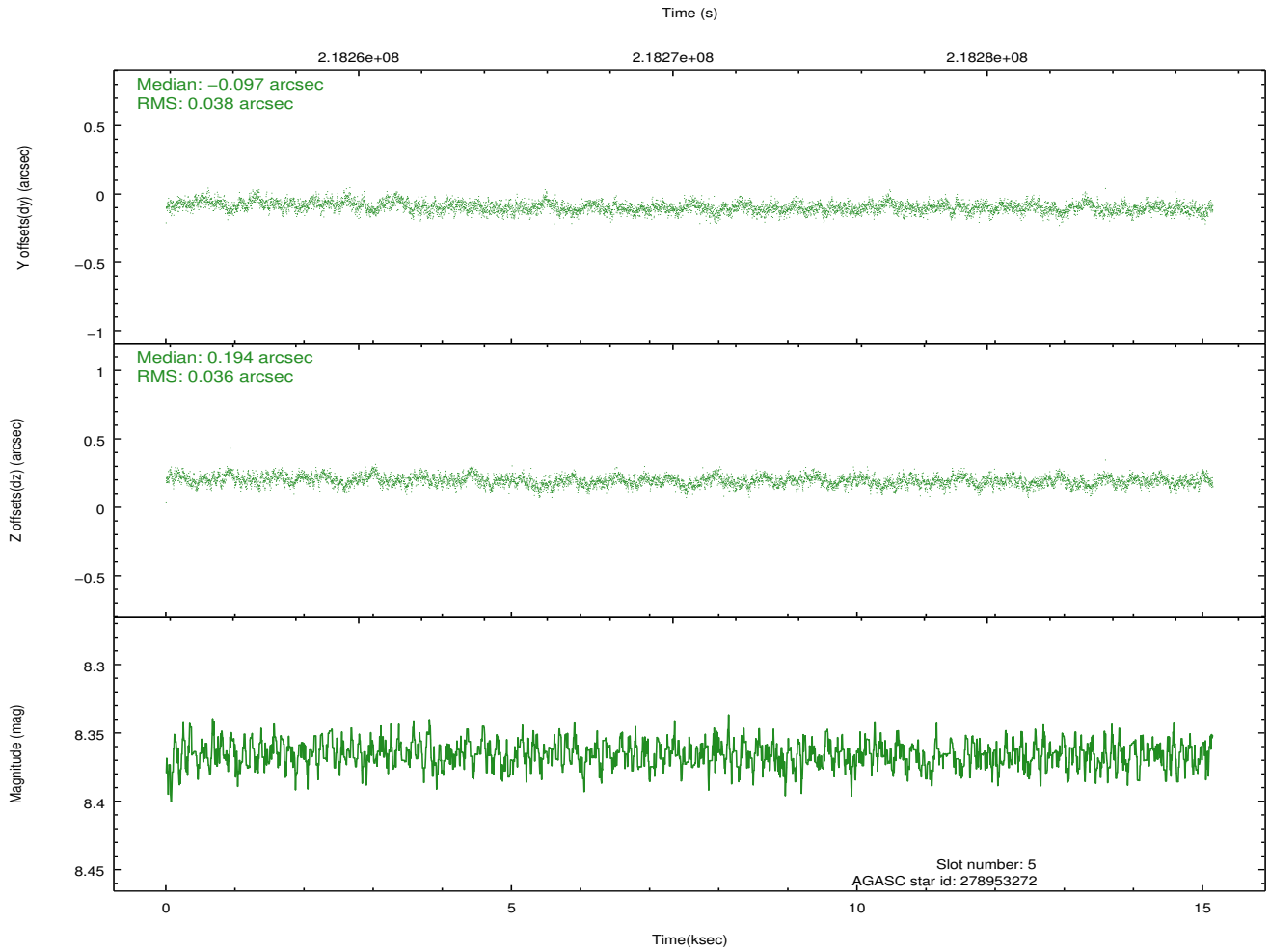
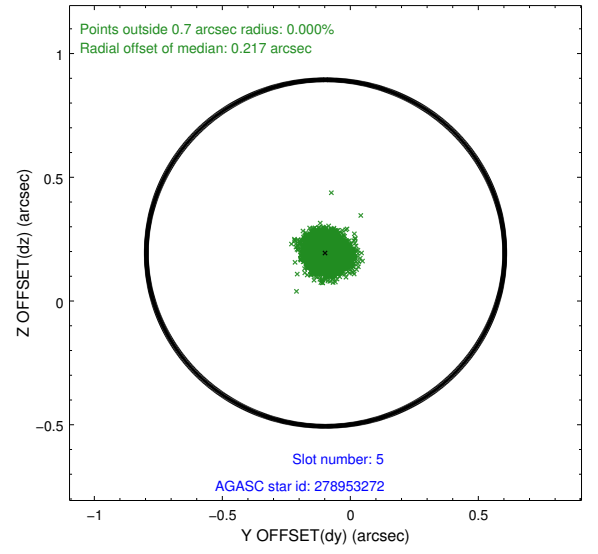
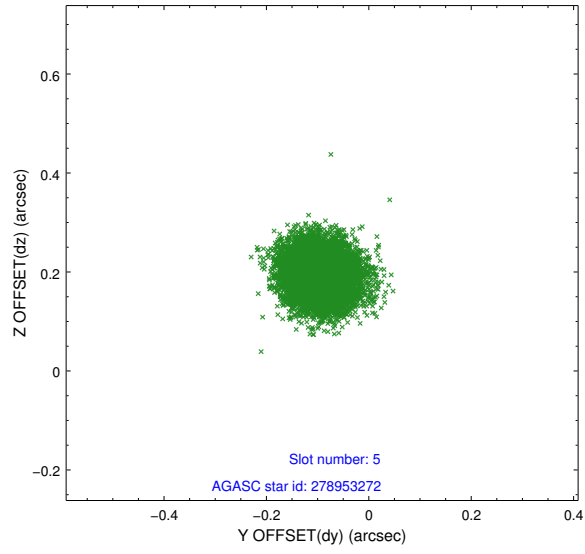
2.4.1 Slot 3



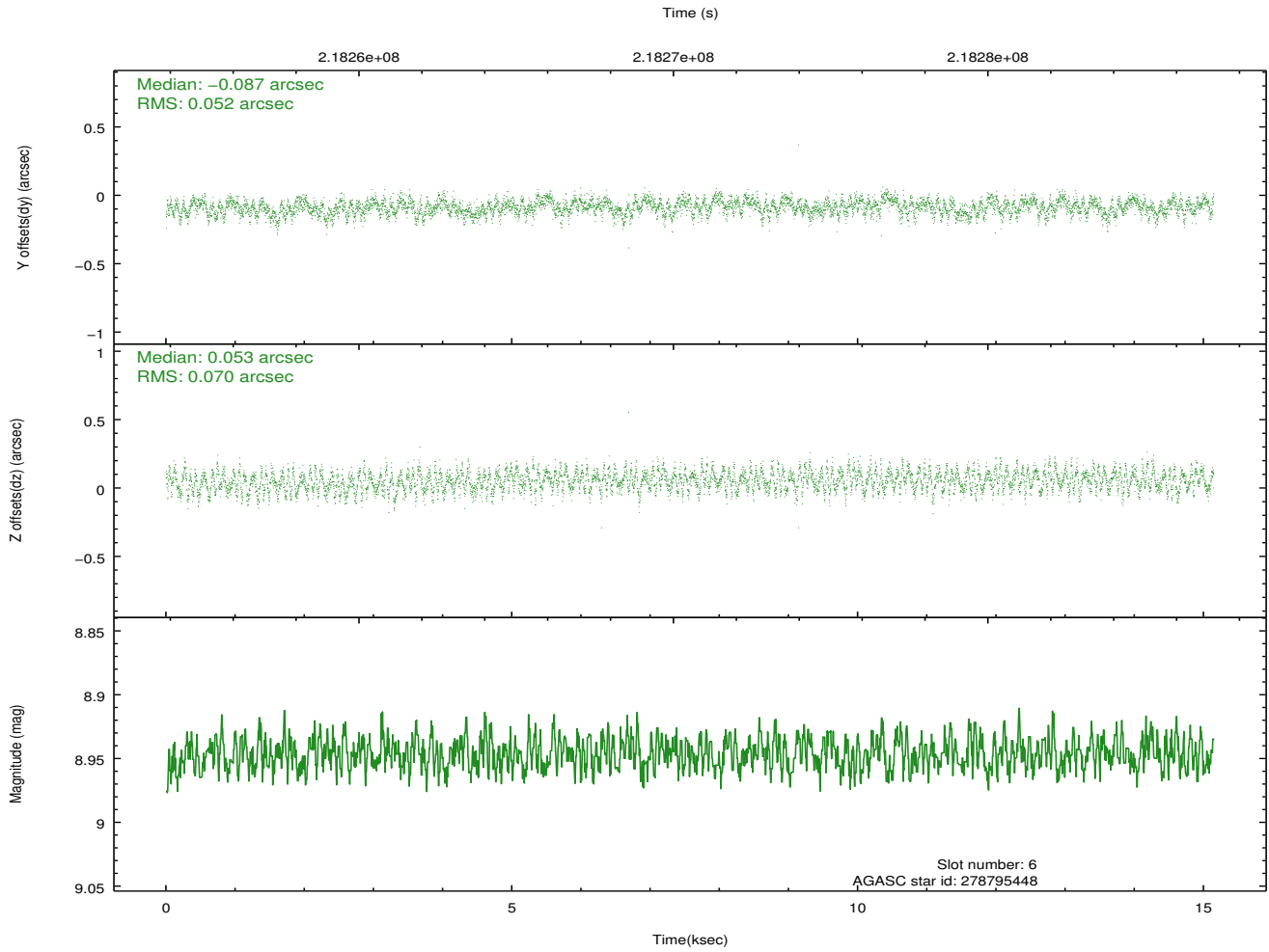
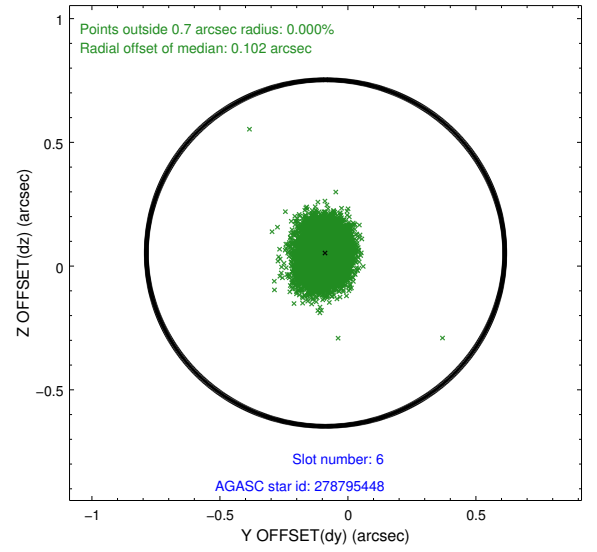
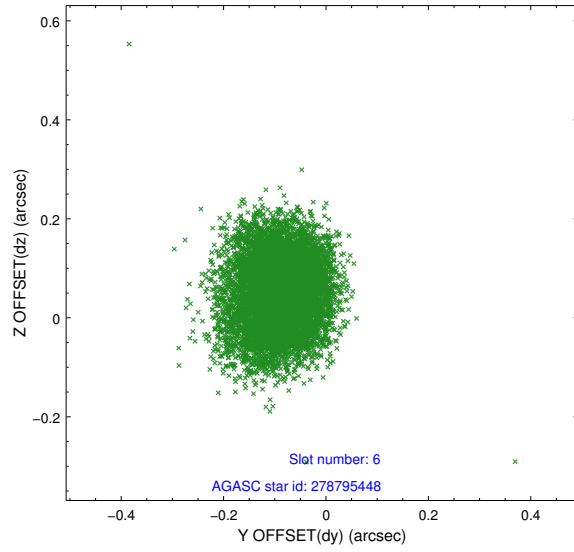
2.4.2 Slot 4



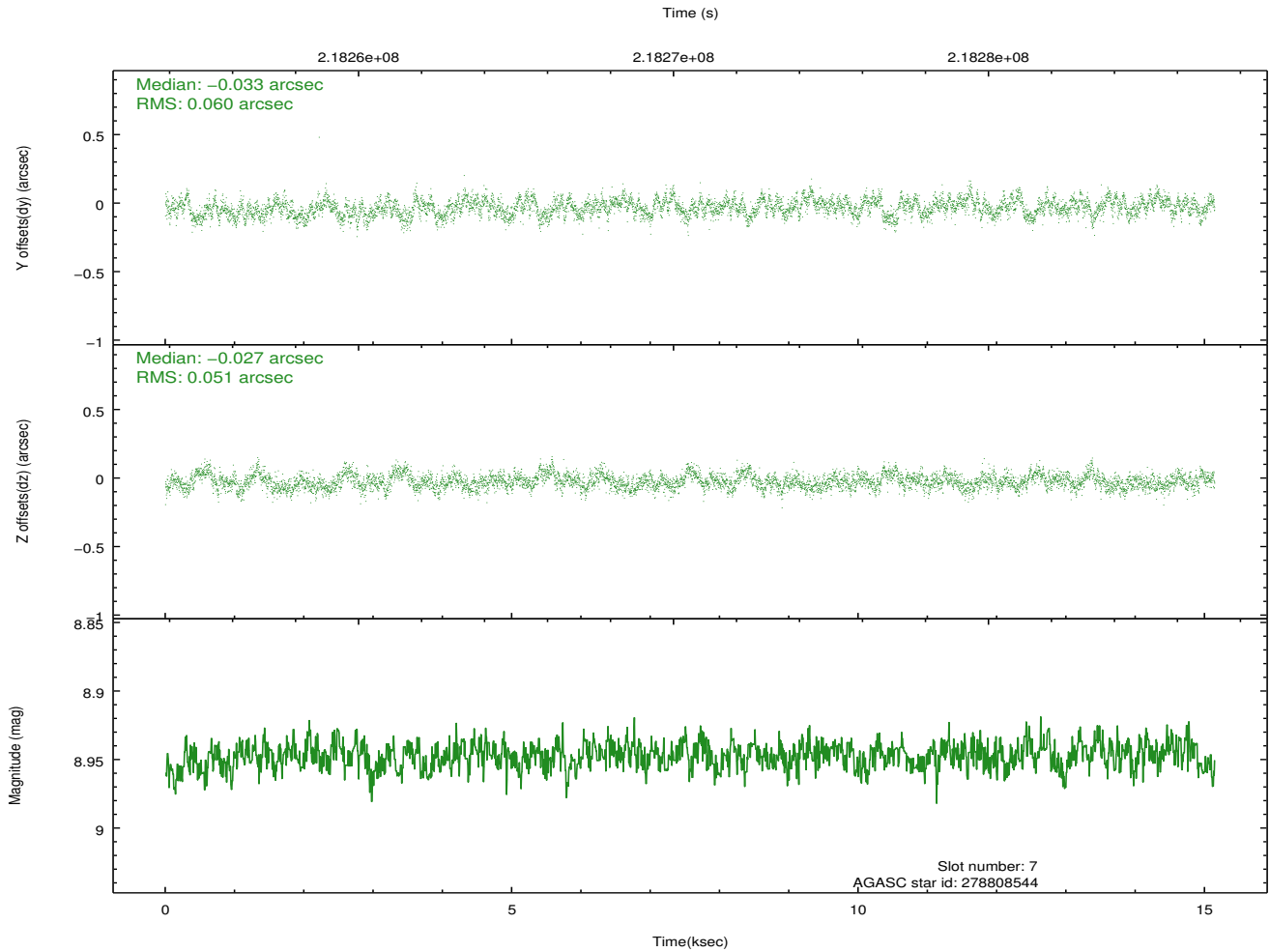
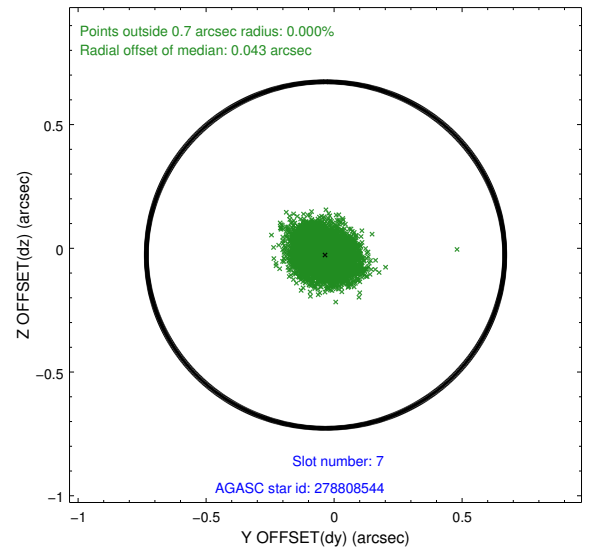
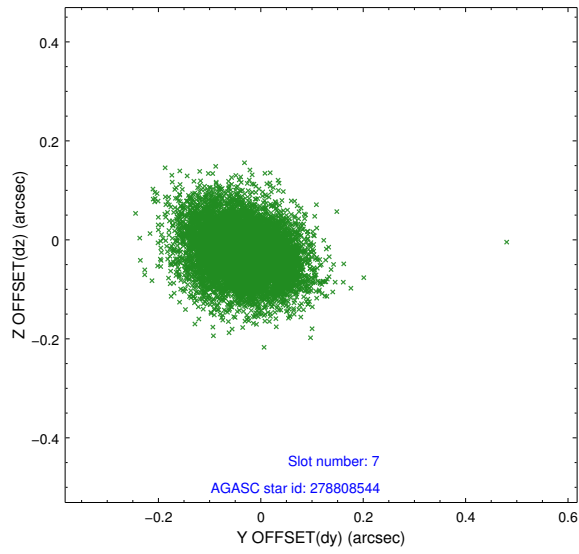
2.4.3 Slot 5



2.4.4 Slot 6

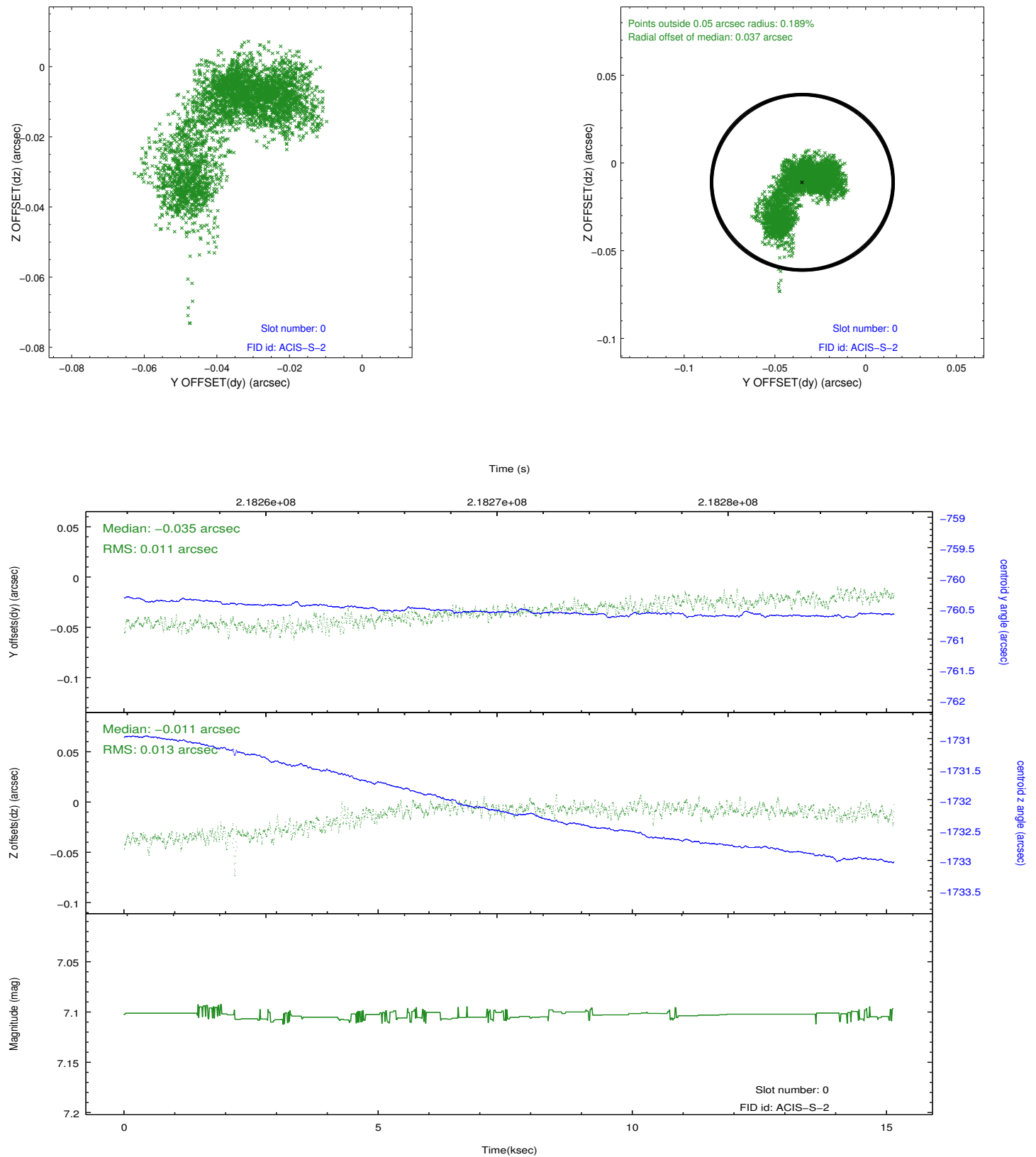


2.4.5 Slot 7

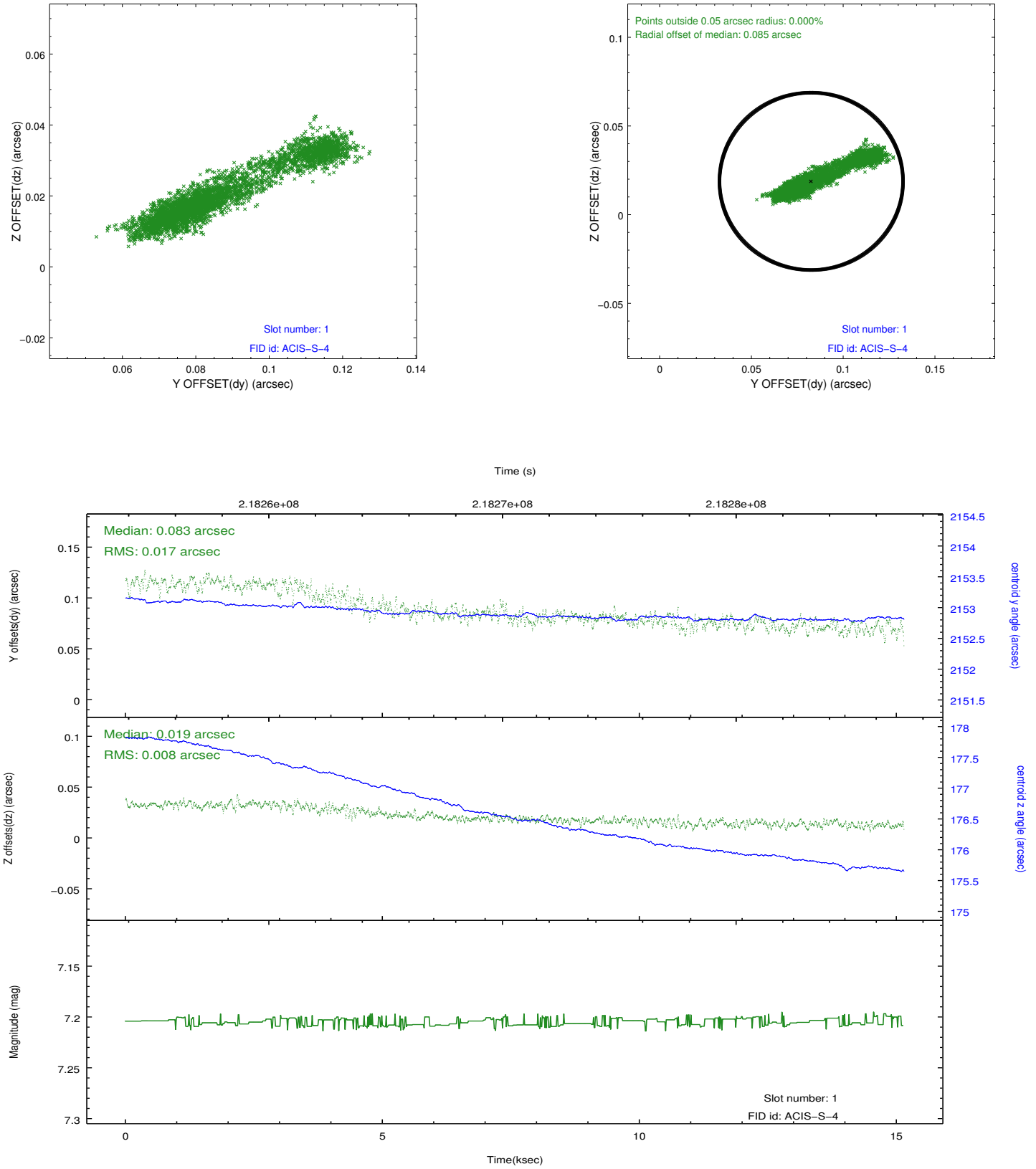


2.5 FID Slots

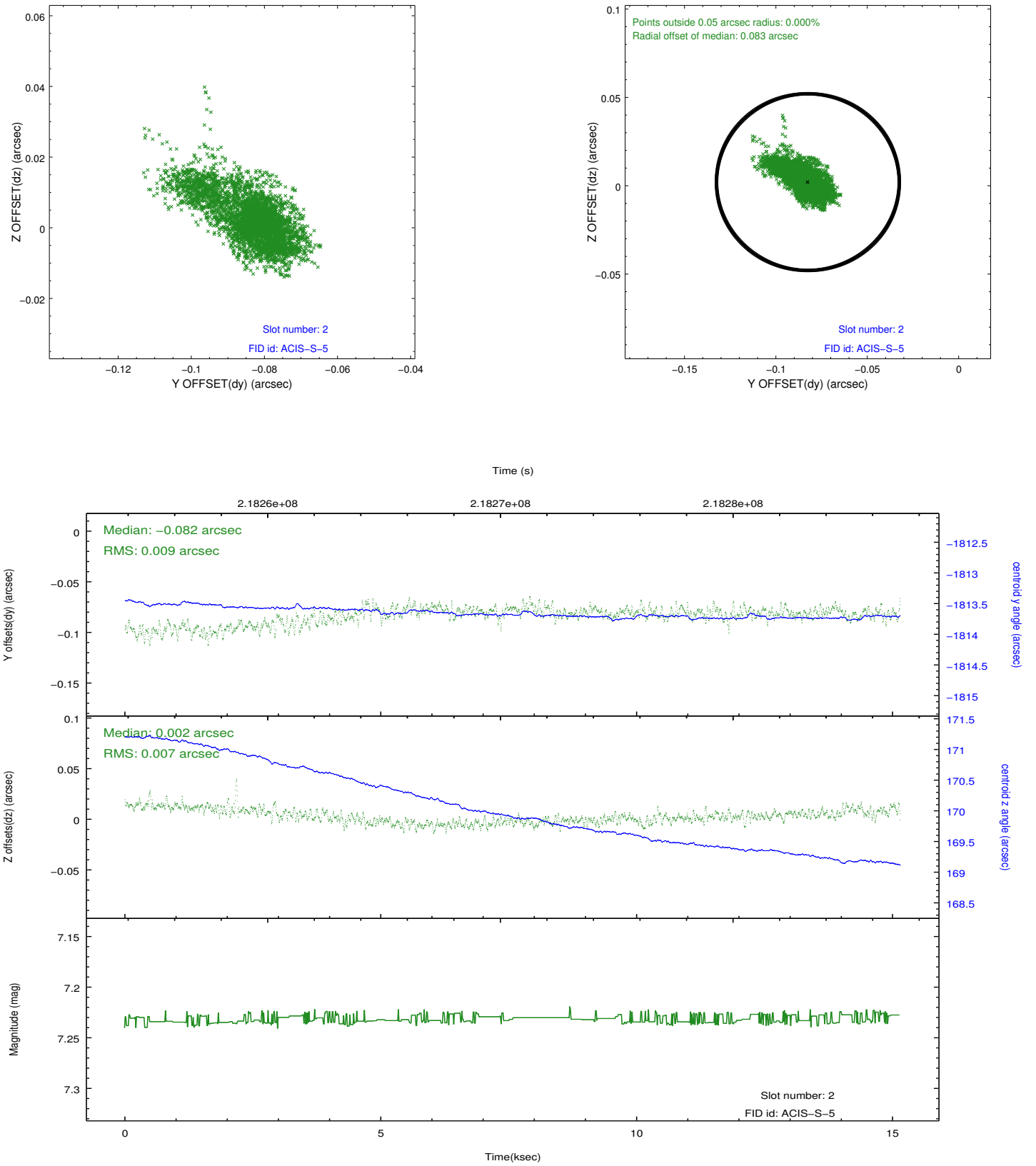
2.5.1 Slot 0



2.5.2 Slot 1



2.5.3 Slot 2



A Summary

A.1 Status

V&V Scientist	Joy Nichols
V&V Date (YYYY-MM-DD)	2013.01.08
V&V Edition	1
V&V Disposition and Status	OK
V&V Charge Time	15.1435

A.2 Comments