

V&V Reference Report

L2 ASCDS Version : 8.5.1.1

Observation 6349 - L2 Version 3
Chandra X-Ray Center

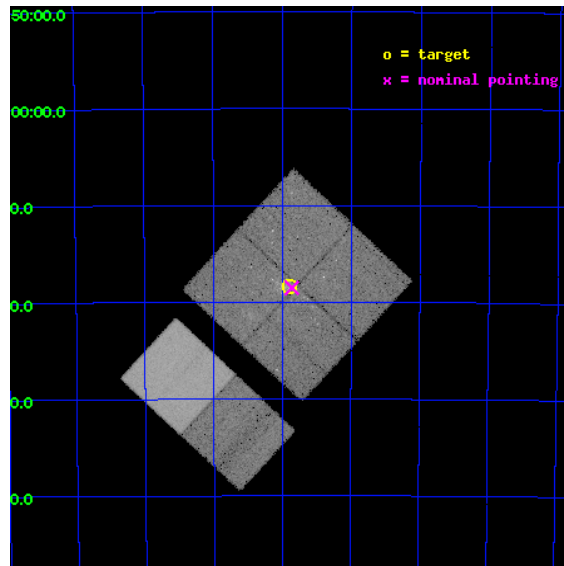
L2 Processing Date : Dec 26 2012

Contents

1	Front	2
2	OBI	3
2.1	OBI	3
2.1.1	Images	3
2.1.2	Bias	3
2.1.3	Parameters	4
2.1.4	Events	4
2.2	Compared Parameters	5
2.3	Aspect	6
2.4	Star Slots	9
2.4.1	Slot 3	9
2.4.2	Slot 4	10
2.4.3	Slot 5	11
2.4.4	Slot 6	12
2.4.5	Slot 7	13
2.5	FID Slots	14
2.5.1	Slot 0	14
2.5.2	Slot 1	15
2.5.3	Slot 2	16
A	Summary	17
A.1	Status	17
A.2	Comments	17

1 Front

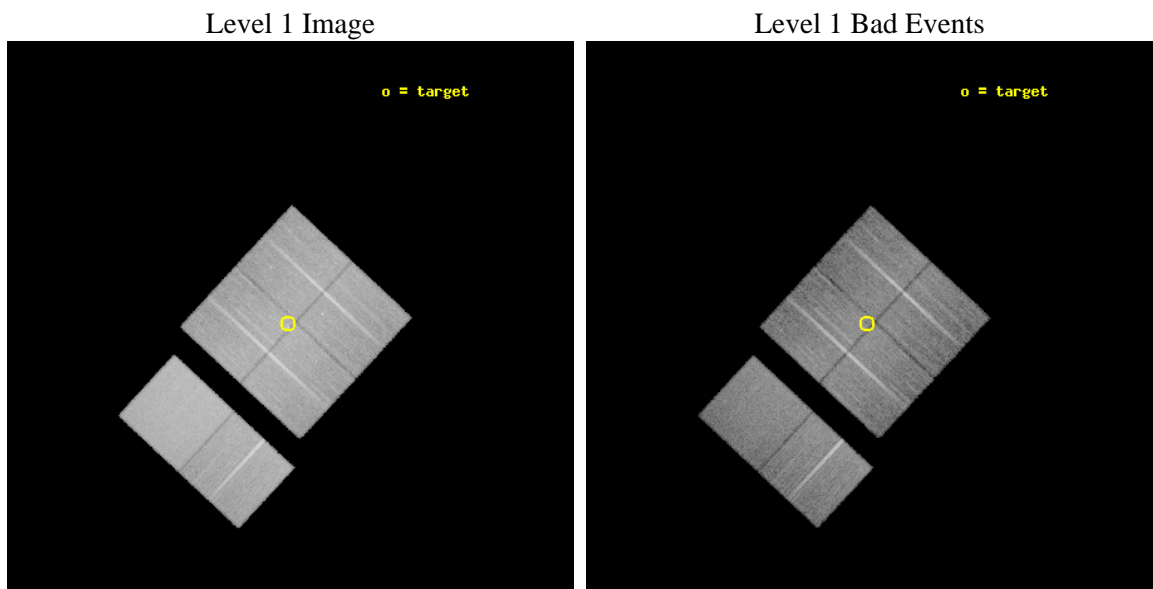
seq_num	200265	Sequence number
obs_id	6349	Observation id
title	X-ray Flows from the Giant HII Region NGC 3576	Proposal title
observer	Dr. Leisa Townsley	Principal investigator
object	NGC 3576	Source name
dtcycle	0	
cycle	P	events from which exps? Prim/Second/Both
ra_targ	167.974167	Observer's specified target RA [deg]
dec_targ	-61.306944	Observer's specified target Dec [deg]
ra_nom	167.965146	Nominal RA [deg]
dec_nom	-61.308514	Nominal Dec [deg]
roll_nom	222.900758	Nominal Roll [deg]
revision	3	Processing version of data
ontime	21121.877179474	Sum of GTIs [s]
livetime	20854.41925256	Livetime [s]
ontime0	21121.754059494	Sum of GTIs [s]
ontime1	21121.795099467	Sum of GTIs [s]
ontime2	21115.354198903	Sum of GTIs [s]
ontime3	21121.877179474	Sum of GTIs [s]
ontime6	21118.718289196	Sum of GTIs [s]
ontime7	21121.918219477	Sum of GTIs [s]
l2events	231608	Number of level 2 events



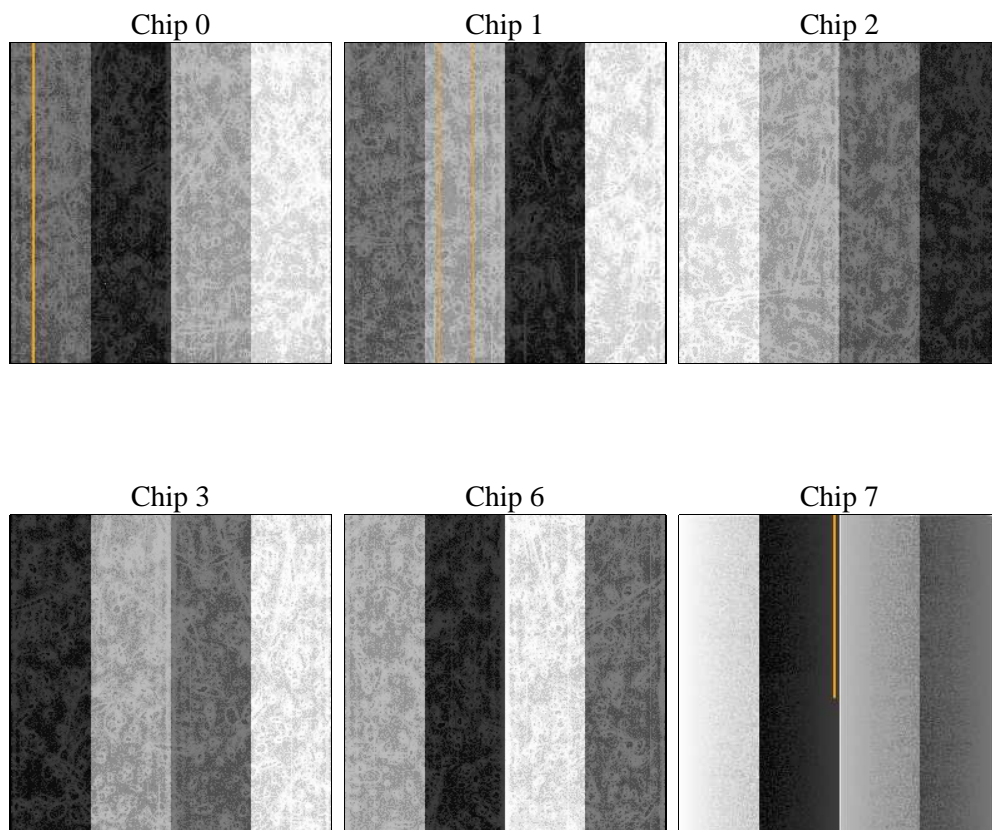
2 OBI

2.1 OBI

2.1.1 Images



2.1.2 Bias



2.1.3 Parameters

obi_num	0	Obi number	sched_exp_time	20949.496000	[s] Scheduled observation exposure time
ascdsver	8.5.1.1	Processing system revision	ontime	21121.877179474	Sum of GTIs [s]
caldsver	4.5.5	 	ontime0	21121.754059494	Sum of GTIs [s]
date	2012-12-26T14:49:39	Date and time of file creation	ontime1	21121.795099467	Sum of GTIs [s]
revision	3	Processing version of data	ontime2	21115.354198903	Sum of GTIs [s]
			ontime3	21121.877179474	Sum of GTIs [s]
			ontime6	21118.718289196	Sum of GTIs [s]
			ontime7	21121.918219477	Sum of GTIs [s]
			l1events	1077968	Number of level 1 events

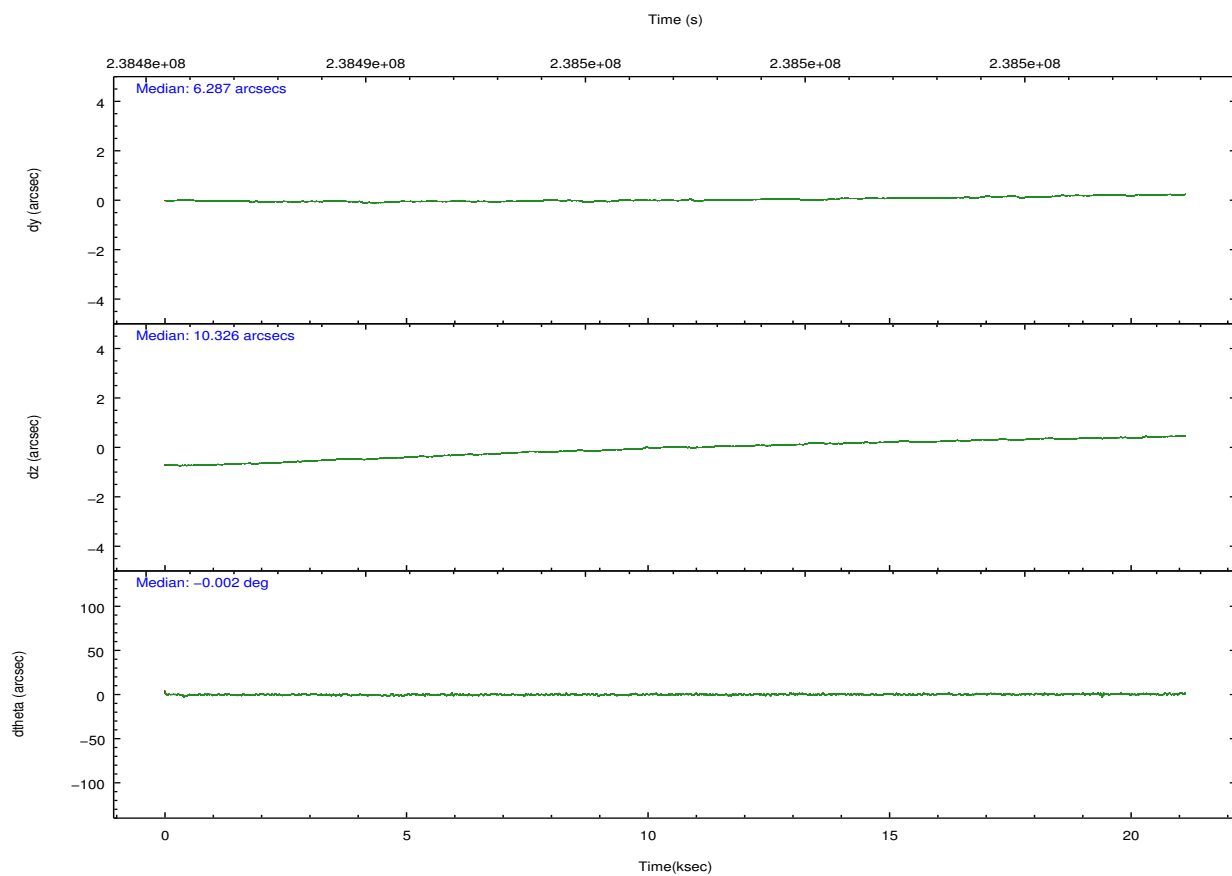
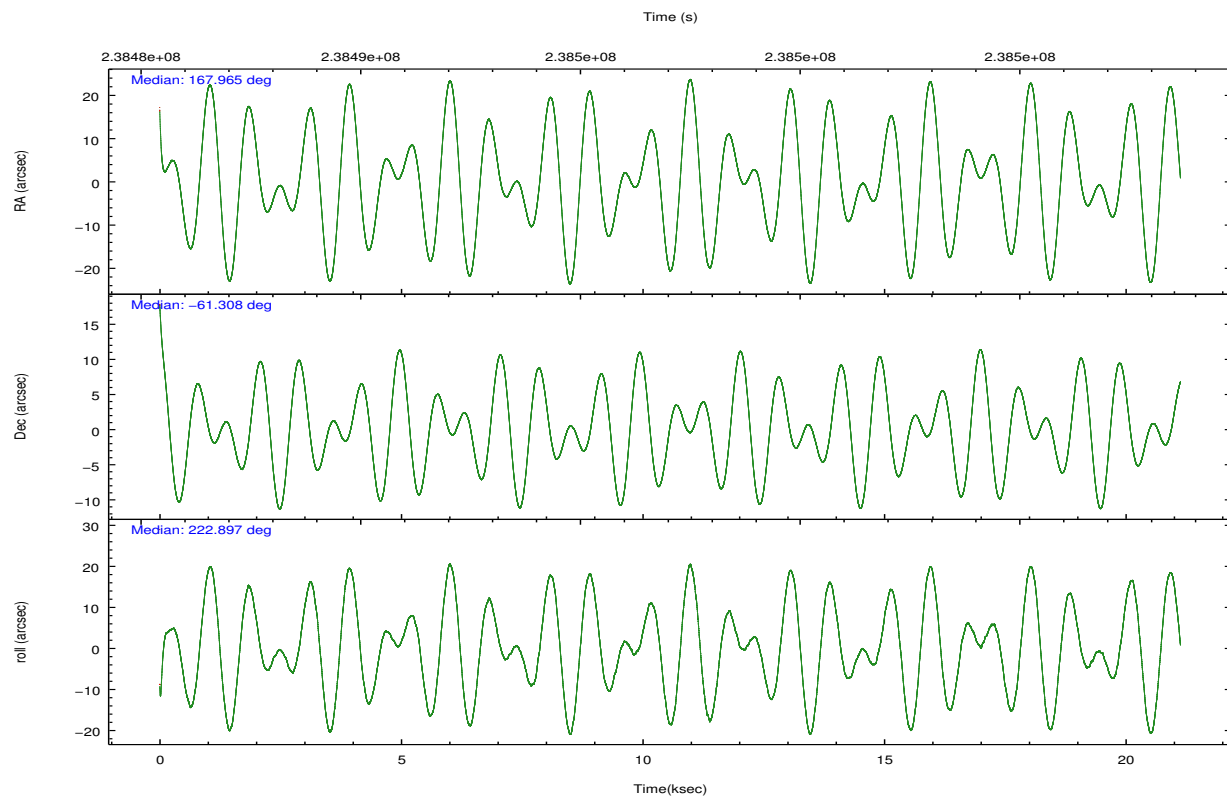
2.1.4 Events

	ccd 0	ccd 1	ccd 2	ccd 3	ccd 6	ccd 7		ccd 0	ccd 1	ccd 2	ccd 3	ccd 6	ccd 7
level 1 events	158089	161895	172859	174638	175428	235059	grade 0 events	15156	15294	15354	16599	13369	9365
rejected events	129152	130947	144500	144312	147832	131580		9%	9%	8%	9%	7%	3%
rejected %	81%	80%	83%	82%	84%	55%	grade 1 events	111	111	138	150	108	229
								0%	0%	0%	0%	0%	0%
							grade 2 events	5330	6148	5065	5039	5197	19992
								3%	3%	2%	2%	2%	8%
							grade 3 events	2226	2413	2078	2229	2145	8771
								1%	1%	1%	1%	1%	3%
							grade 4 events	2117	2356	2142	2258	2166	8807
								1%	1%	1%	1%	1%	3%
							grade 5 events	6798	7006	6504	7531	7884	20949
								4%	4%	3%	4%	4%	8%
							grade 6 events	4127	4754	3738	4216	4727	56578
								2%	2%	2%	2%	2%	24%
							grade 7 events	122224	123813	137840	136616	139832	110368
								77%	76%	79%	78%	79%	46%

2.2 Compared Parameters

Parameter	Planned	Actual	Parameter	Planned	Actual
Instrument	ACIS	ACIS	Obspar format version number	7	7
Detector	ACIS-012367	ACIS-012367	Obspar file type	PREDICTED	ACTUAL
Grating	NONE	NONE	Obspar update status	NONE	UPDATED
Data mode	VFAINT	VFAINT	On-chip summing requested	N	N
Observation mode	POINTING	POINTING	Subarray requested	NONE	NONE
[deg] Pointing RA	167.981626	167.9651038913066	Alternating exposures requested	N	N
[deg] Pointing Dec	-61.282329	-61.308533060712	[s] Primary exposure time	0.000000	3.2
[deg] Pointing Roll	222.706546	222.9007209922042			
[mm] SIM focus pos	-0.782348	-0.7809083437167272			
[mm] SIM defocus	0	0.001439871863259334			
[mm] SIM translation stage pos	-233.592463	-233.5874344608287			
[mm] SIM translation stage offset	0	-0.005018542100998502			
[s] Observation start time (MET)	238486655.184000	238485587.25993			
Observation start date	2005-07-23T06:16:31	2005-07-23T05:59:47			
[s] Observation end time (MET)	238507605.184000	238507836.42345			
Observation end date	2005-07-23T12:05:41	2005-07-23T12:10:36			
Read mode	TIMED	TIMED			

2.3 Aspect

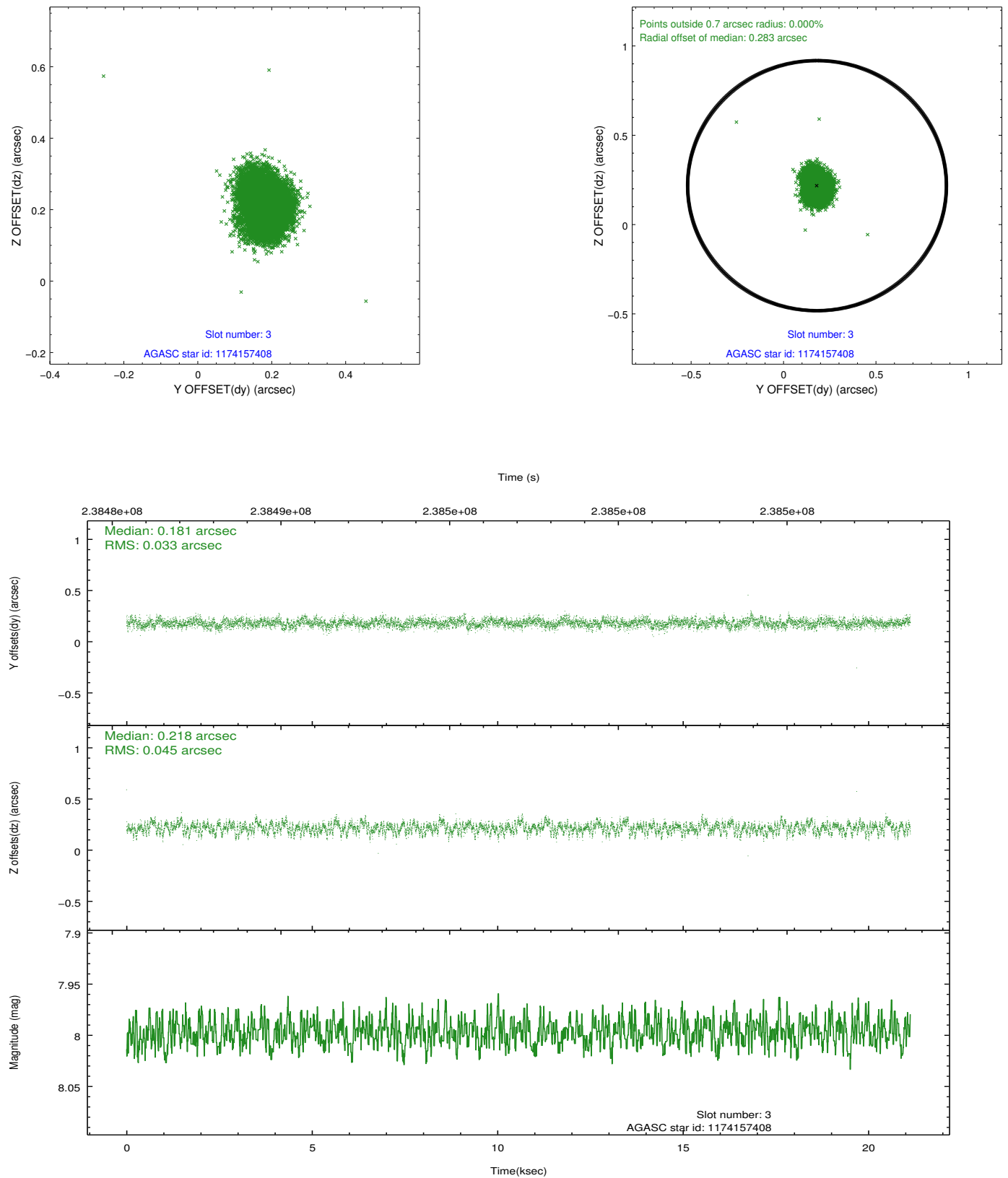


Slot Statistics

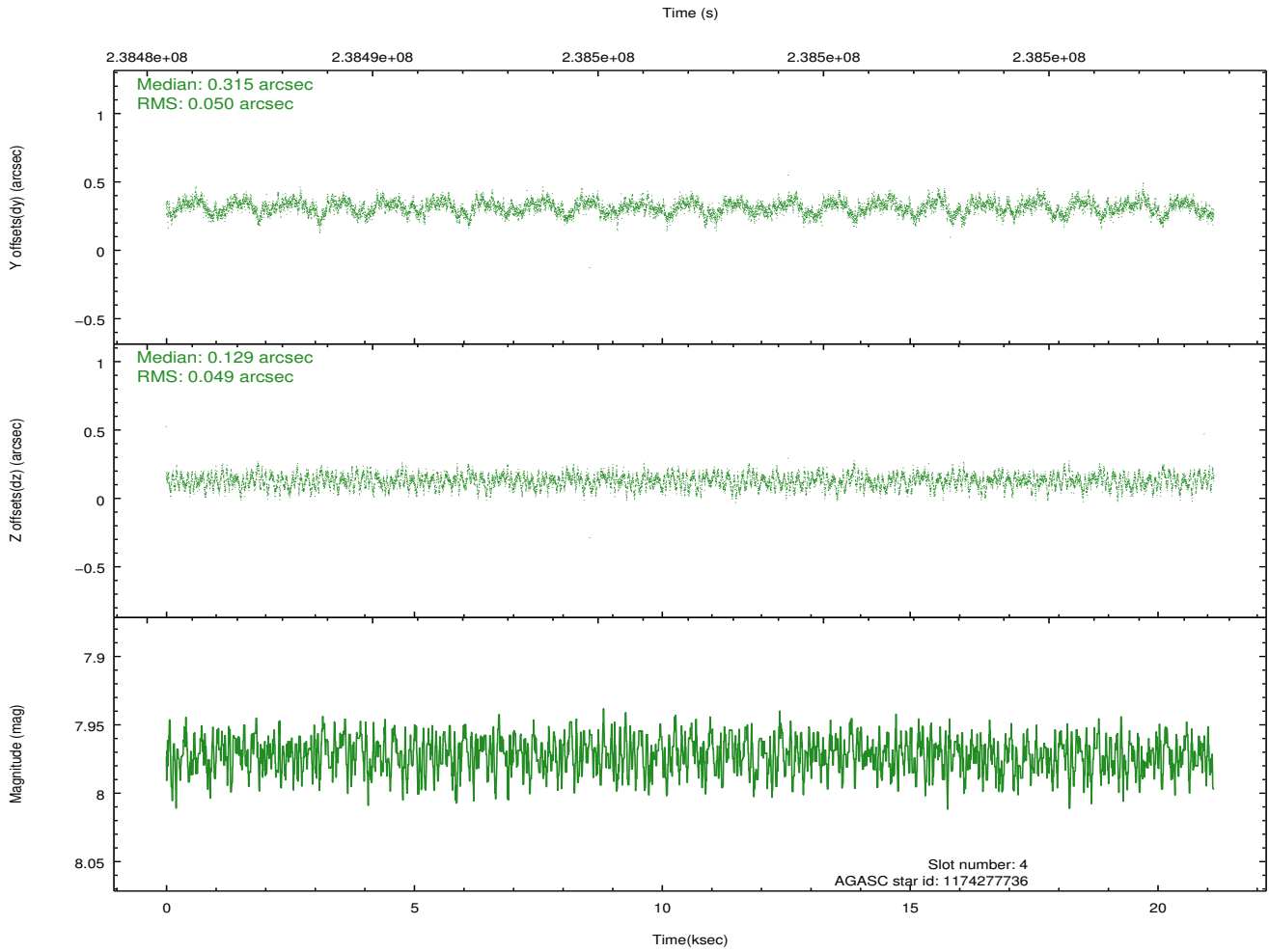
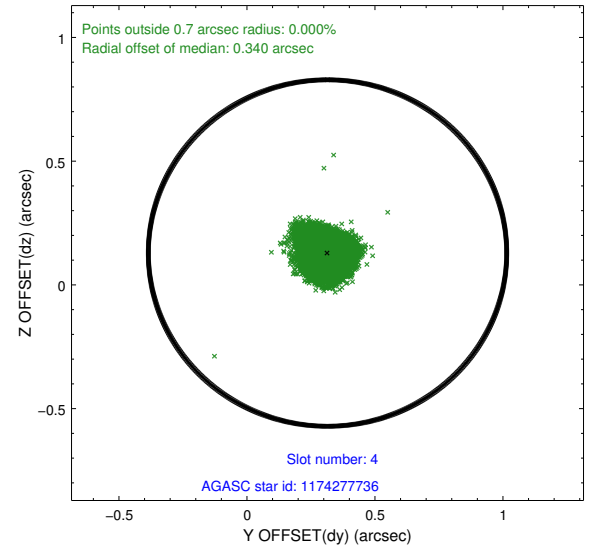
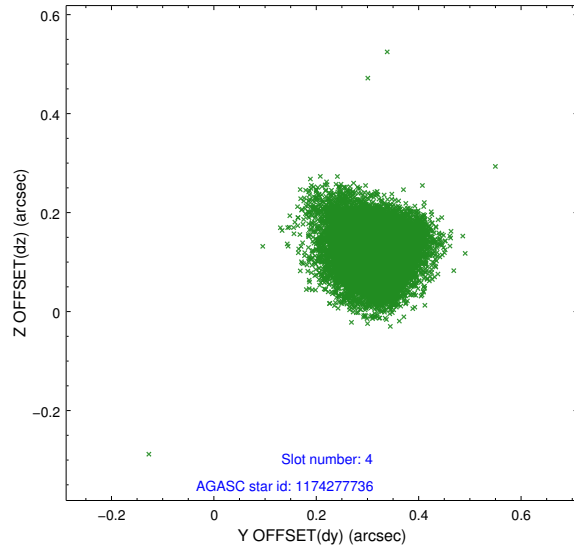
slot	status	id	mag	n_pts	med_dy	med_dz	dr1	dr2	ra	dec	mean_y	mean_z
0	FID	ACIS-I-1	7.25	5154	-0.005	-0.011	0.027	0.045	0.000000	0.000000	933.38	-833.74
1	FID	ACIS-I-4	7.18	5154	0.095	0.033	0.018	0.030	0.000000	0.000000	2153.62	1066.02
2	FID	ACIS-I-5	7.22	5154	-0.188	0.049	0.012	0.019	0.000000	0.000000	-1814.59	1064.09
3	GUIDE	1174157408	8.00	10309	0.181	0.218	0.060	0.095	167.115550	-61.626529	1936.33	-86.70
4	GUIDE	1174277736	7.97	10308	0.315	0.129	0.075	0.117	167.205882	-61.559450	1660.12	-162.82
5	GUIDE	1174281840	8.17	10305	-0.145	-0.181	0.072	0.116	167.912903	-60.443364	-1958.37	-2302.46
6	GUIDE	1174282480	7.02	10308	-0.348	-0.010	0.048	0.078	168.099465	-60.378692	-2360.53	-2248.55
7	GUIDE	1174286632	8.71	10307	0.001	-0.153	0.067	0.108	169.069142	-61.673672	-399.11	2306.23

2.4 Star Slots

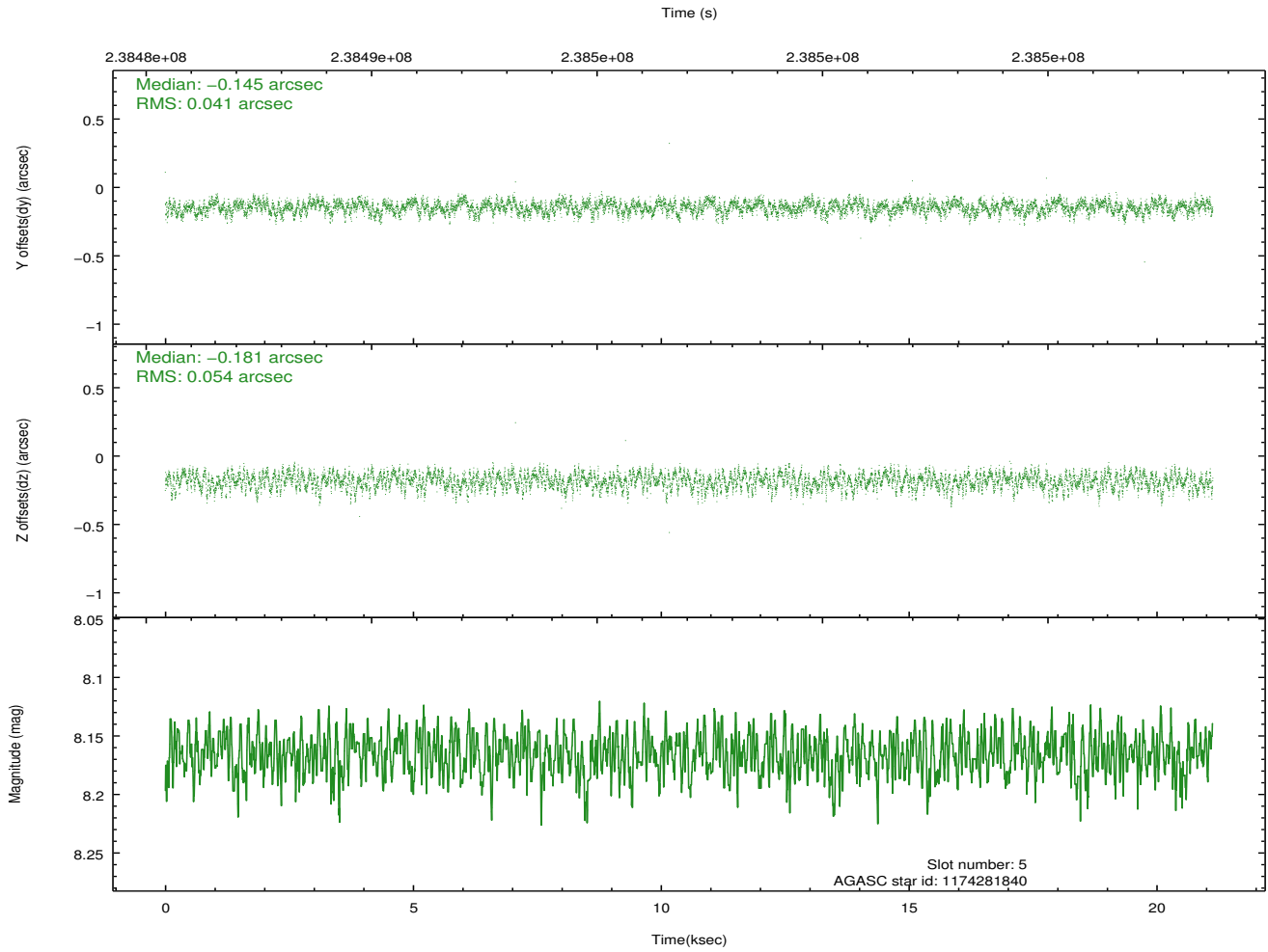
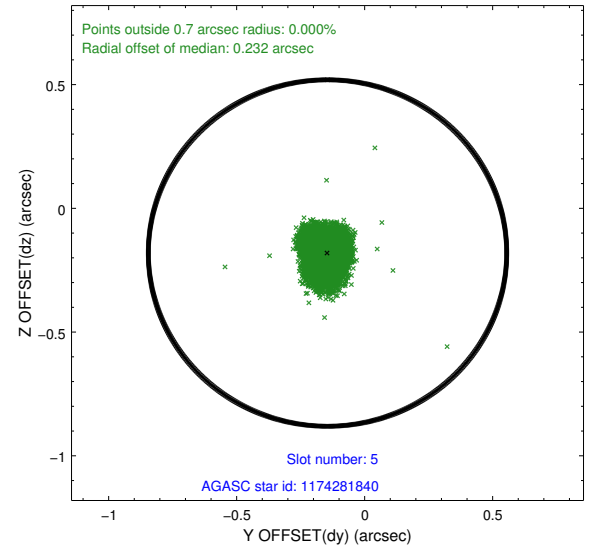
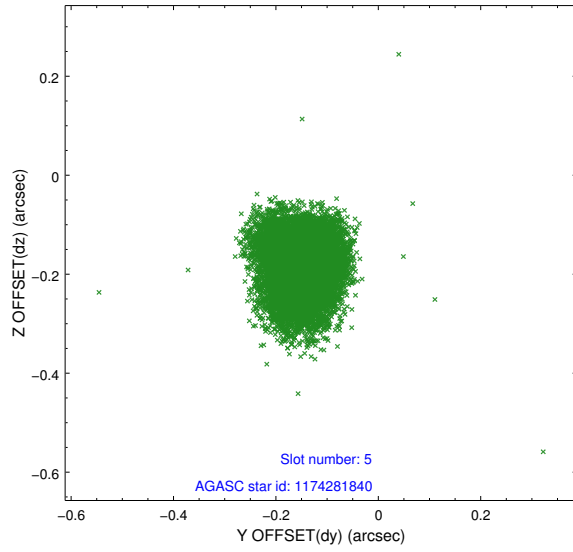
2.4.1 Slot 3



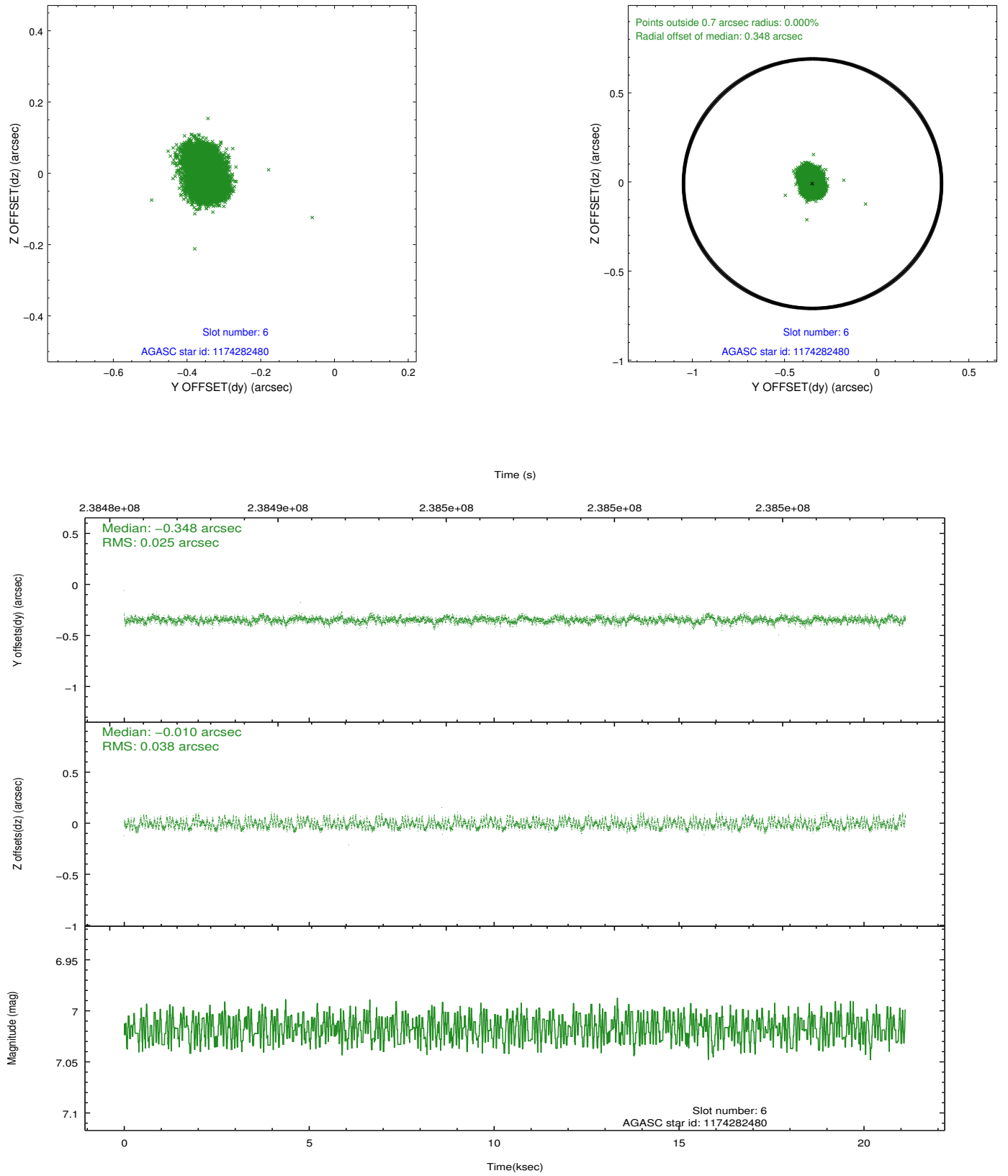
2.4.2 Slot 4



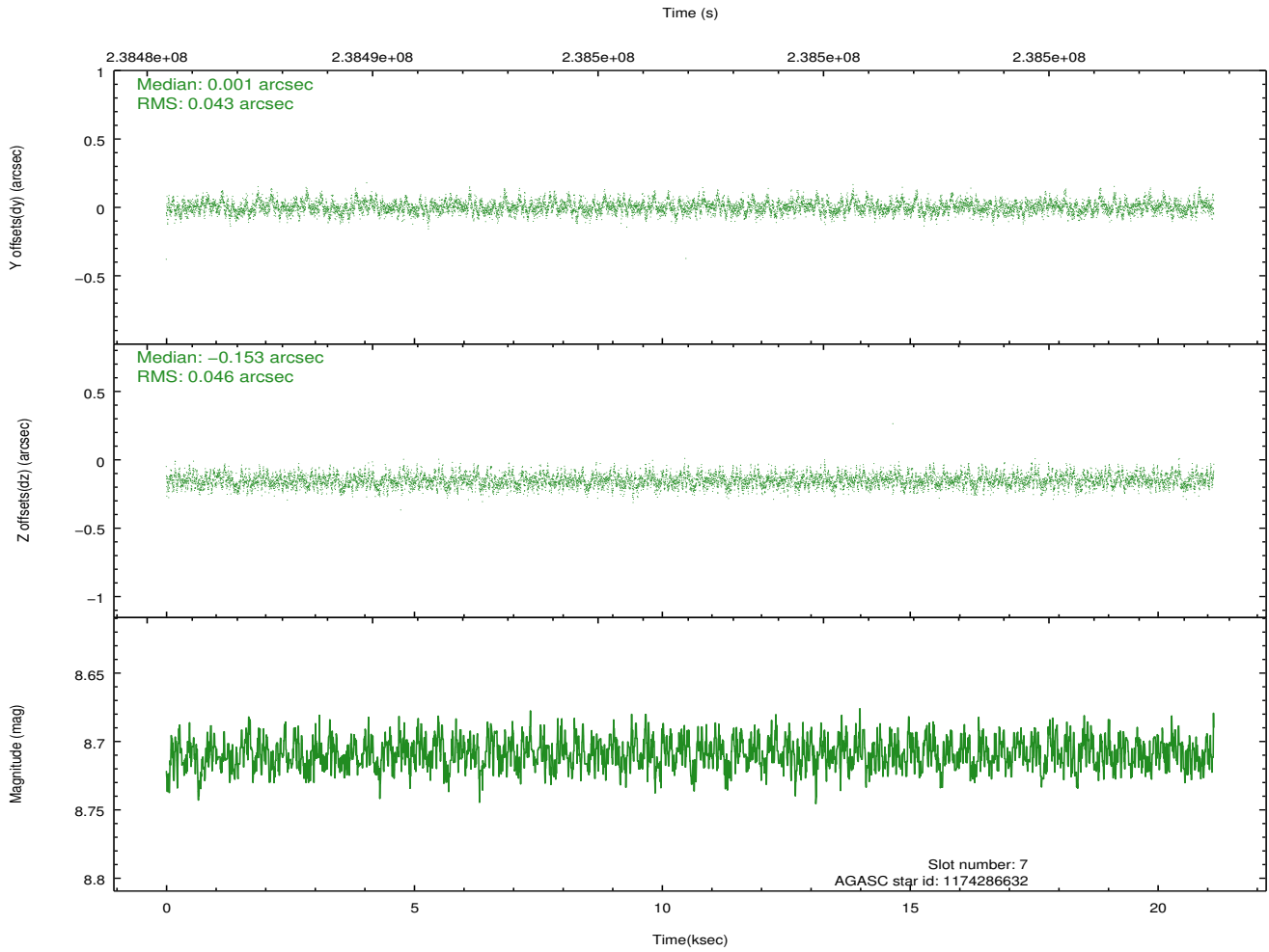
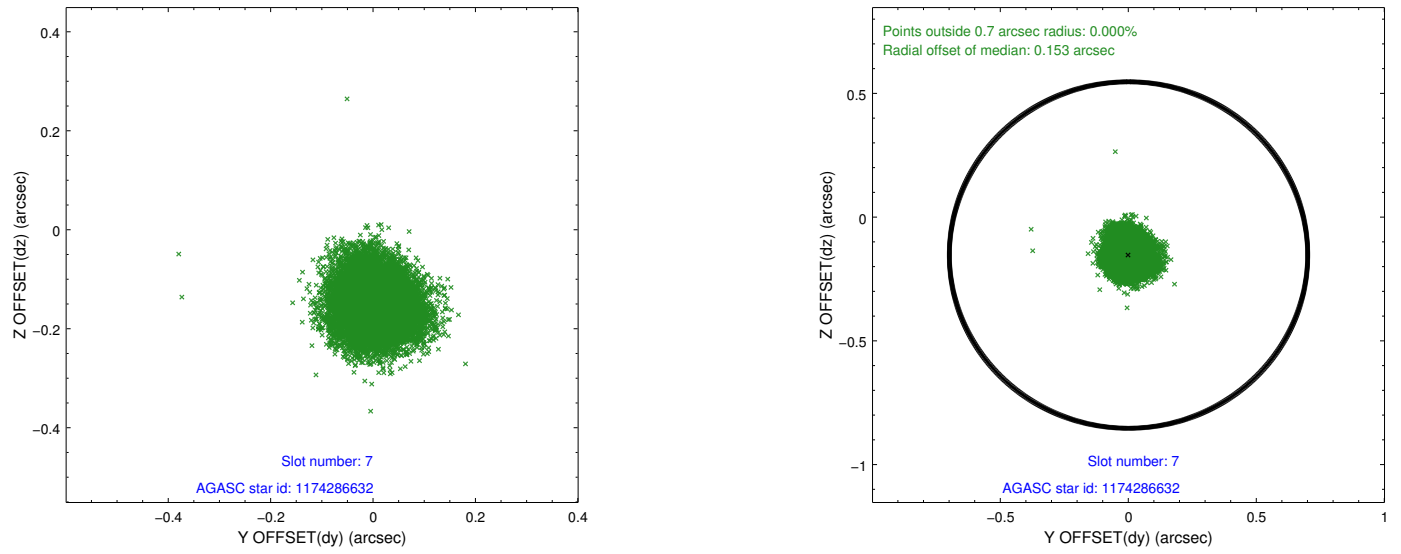
2.4.3 Slot 5



2.4.4 Slot 6

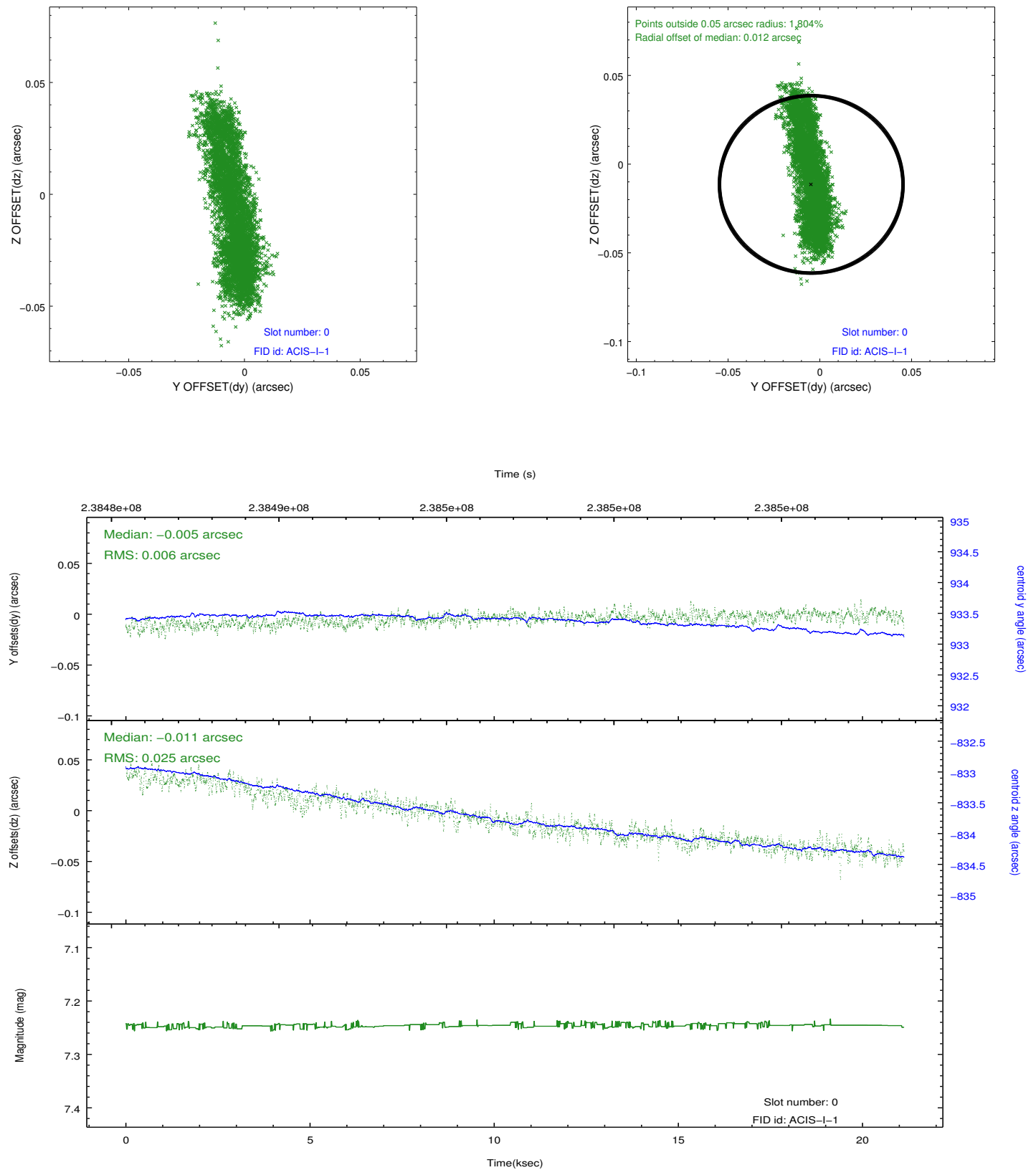


2.4.5 Slot 7

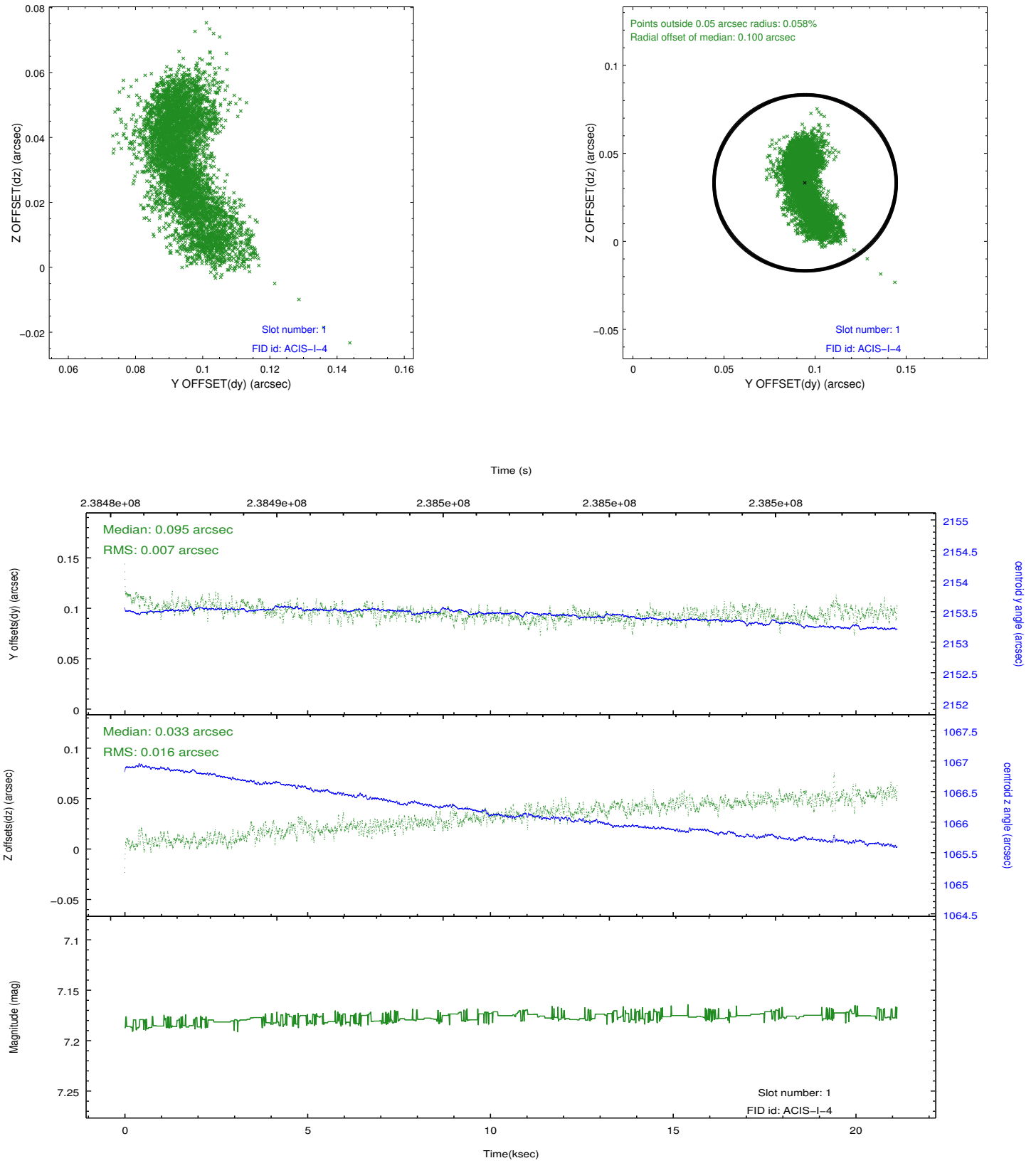


2.5 FID Slots

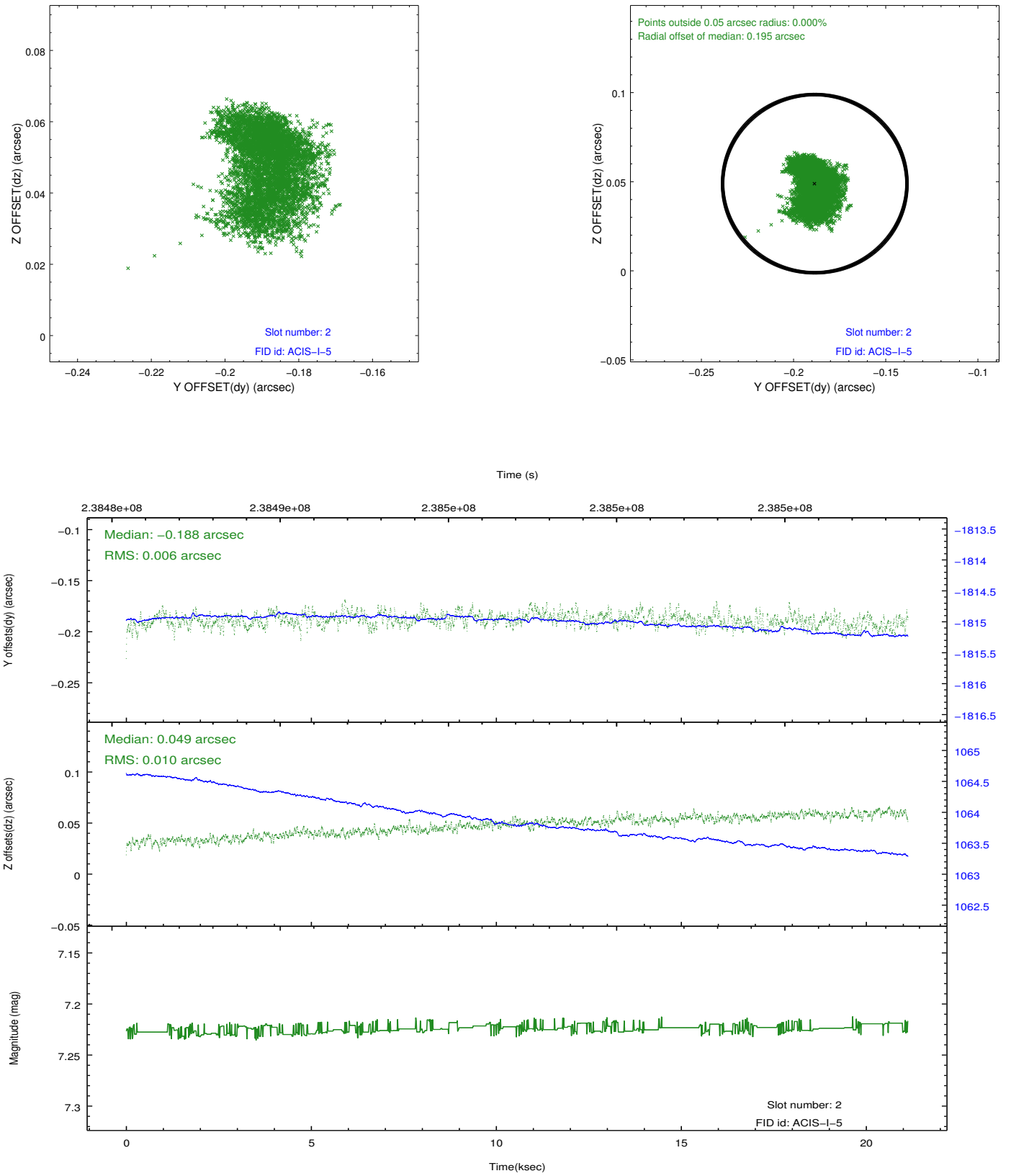
2.5.1 Slot 0



2.5.2 Slot 1



2.5.3 Slot 2



A Summary

A.1 Status

V&V Scientist	Jen Lauer
V&V Date (YYYY-MM-DD)	2013.01.23
V&V Edition	1
V&V Disposition and Status	OK
V&V Charge Time	21.12319

A.2 Comments