

V&V Reference Report

L2 ASCDS Version : 7.6.7.2

Observation 5183 - L2 Version 001
Chandra X-Ray Center

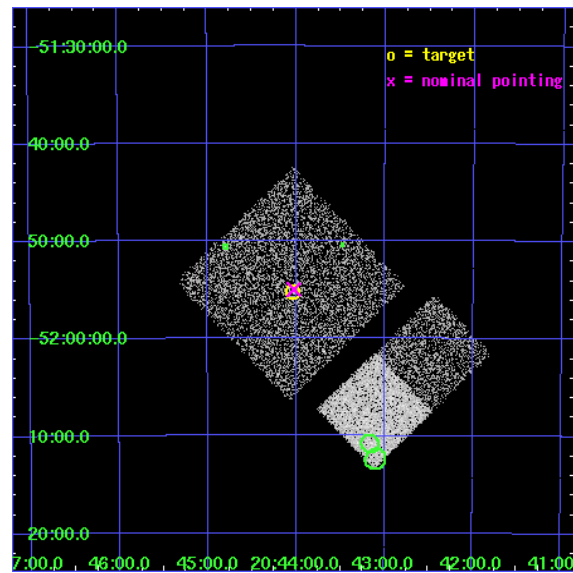
L2 Processing Date : May 31 2006

Contents

1	Front	2
2	OBI	3
2.1	OBI	3
2.1.1	Images	3
2.1.2	Bias	3
2.1.3	Parameters	4
2.1.4	Events	4
2.2	Compared Parameters	5
2.3	Aspect	6
2.4	Star Slots	9
2.4.1	Slot 3	9
2.4.2	Slot 4	10
2.4.3	Slot 5	11
2.4.4	Slot 6	12
2.4.5	Slot 7	13
2.5	FID Slots	14
2.5.1	Slot 0	14
2.5.2	Slot 1	15
2.5.3	Slot 2	16
3	Point Sources	17
A	Summary	18
A.1	Status	18
A.2	Comments	18

1 Front

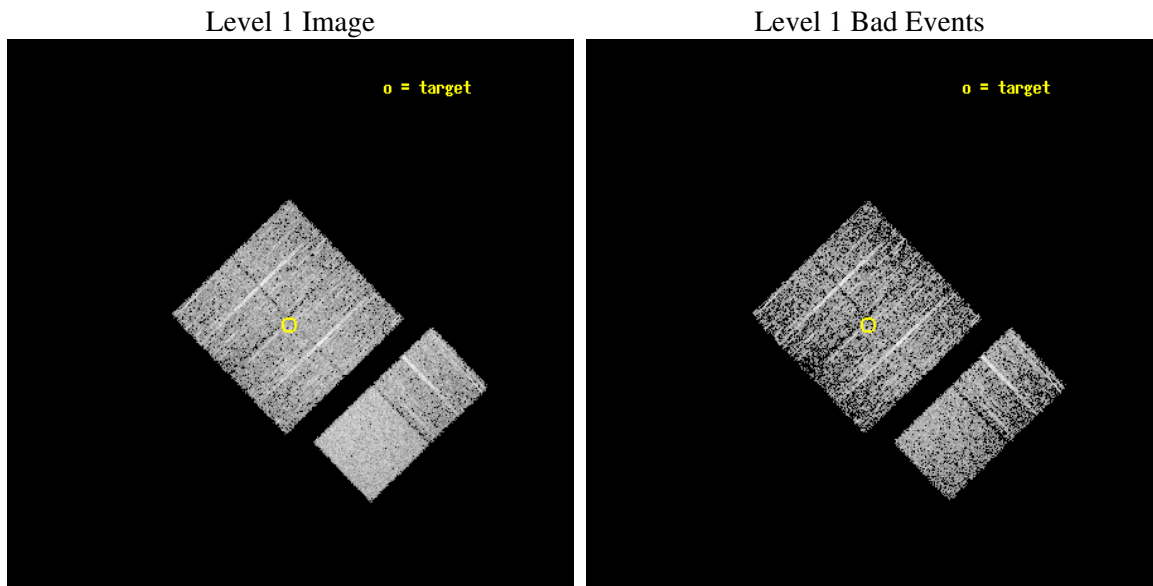
seq_num	200291
obs_id	5183
title	Alternate - Search for beta Pic analogs extension
observer	Professor Gordon Garmire
object	eta Ind
dtcycle	0
cycle	P
ra_targ	311.009167
dec_targ	-51.920833
ra_nom	311.00618789067
dec_nom	-51.916685241856
roll_nom	136.04972883473
revision	2
ontime	3148.7999882698
livetime	3108.9279868386
ontime0	3148.7999882698
ontime1	3148.7999882698
ontime2	3148.7999882698
ontime3	3148.7999882698
ontime6	3148.7999882698
ontime7	3148.7999882698
l2events	21376



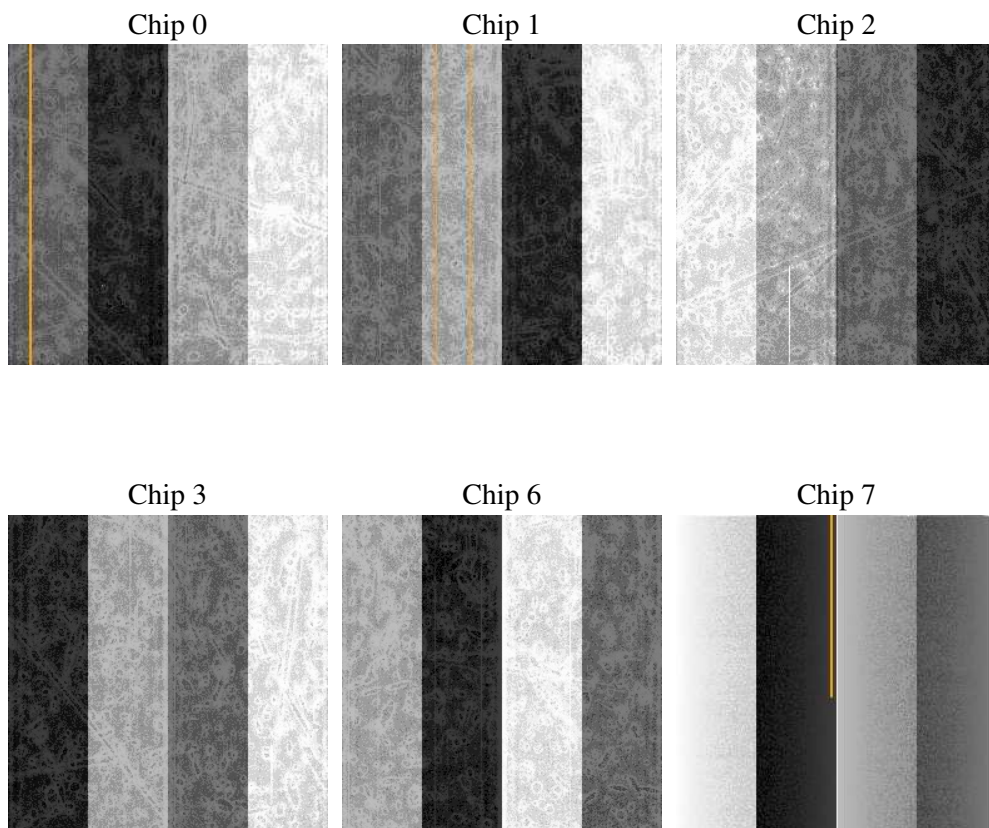
2 OBI

2.1 OBI

2.1.1 Images



2.1.2 Bias



2.1.3 Parameters

obi_num	0
ascdsver	7.6.7.2
caldsver	3.2.2
date	2006-05-31T10:40:59
revision	2

sched_exp_time	2999.648000
ontime	3435.4607307911
ontime0	3435.4607307911
ontime1	3435.4607307911
ontime2	3435.4607307911
ontime3	3435.4607307911
ontime6	3435.4607307911
ontime7	3435.4607307911
l1events	137821

2.1.4 Events

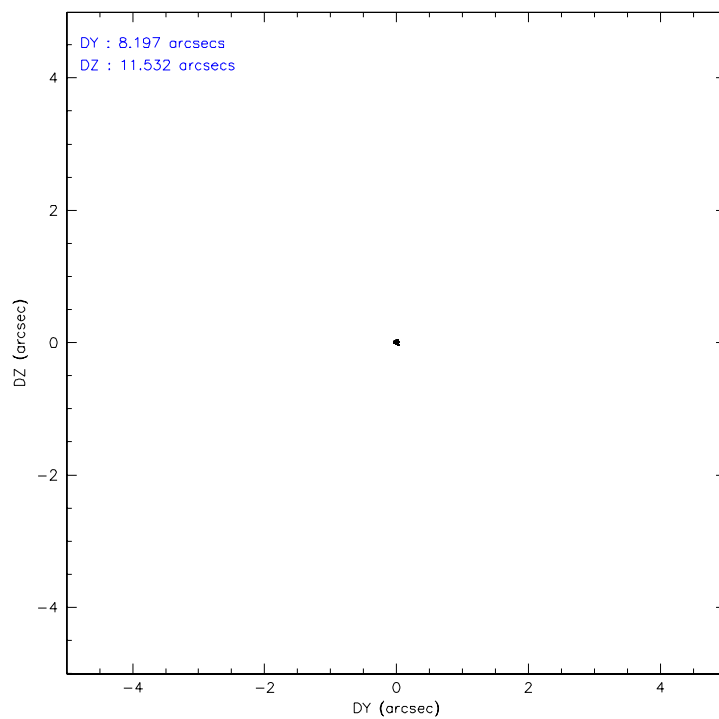
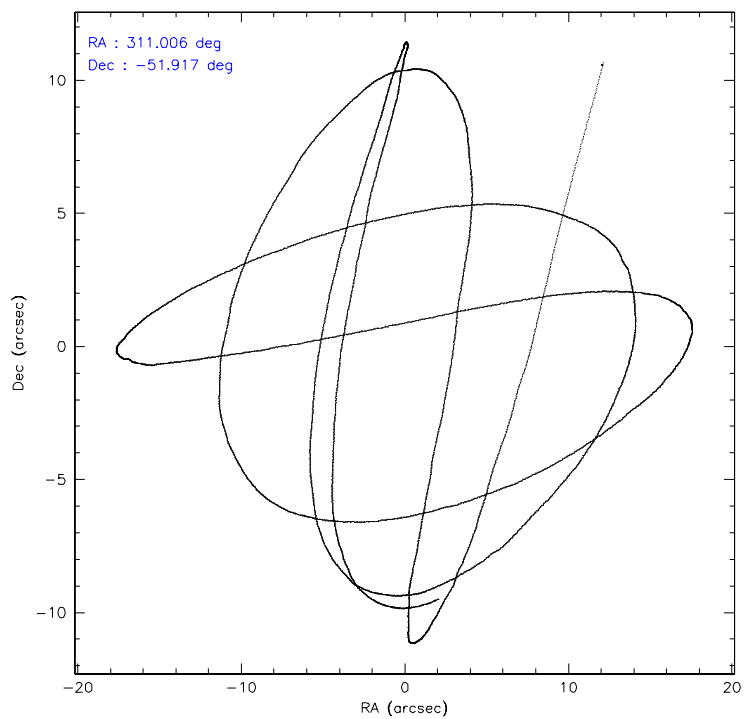
	ccd 0	ccd 1	ccd 2	ccd 3	ccd 6	ccd 7
level 1 events	21024	20443	22309	20951	22361	30733
rejected events	18484	17777	19865	18585	19882	19942
rejected %	87%	86%	89%	88%	88%	64%

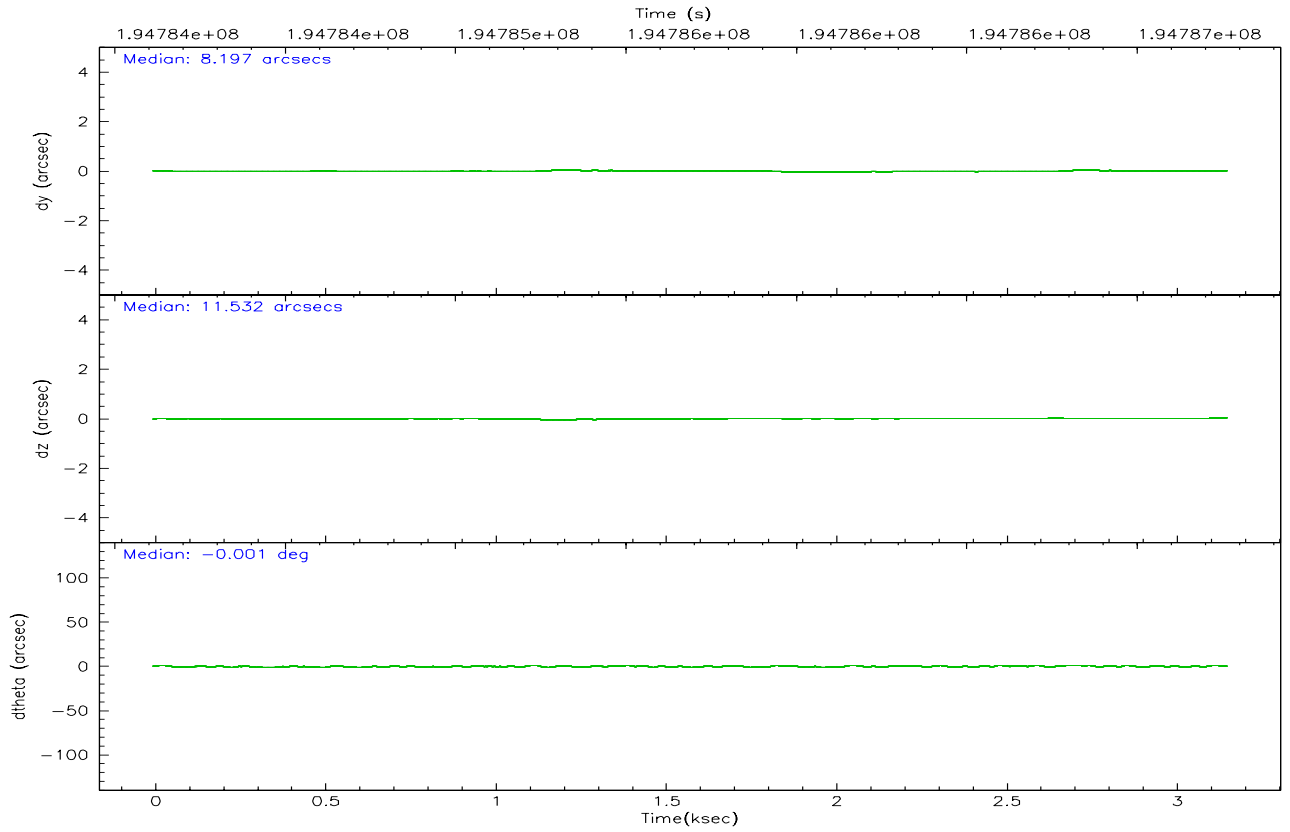
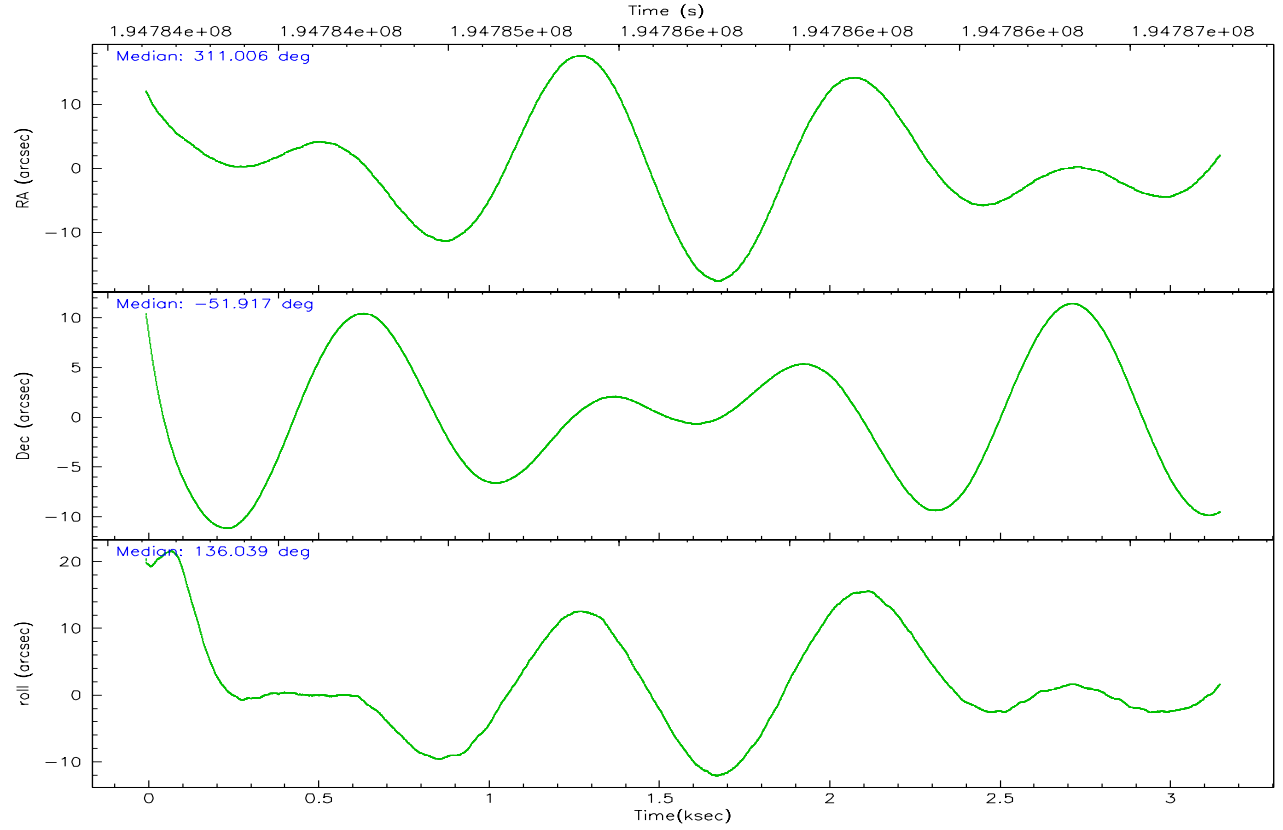
	ccd 0	ccd 1	ccd 2	ccd 3	ccd 6	ccd 7
grade 0 events	1205	1166	1235	1190	1062	665
	5%	5%	5%	5%	4%	2%
grade 1 events	14	7	18	10	9	20
	0%	0%	0%	0%	0%	0%
grade 2 events	572	593	513	469	548	2921
	2%	2%	2%	2%	2%	9%
grade 3 events	297	289	241	247	250	553
	1%	1%	1%	1%	1%	1%
grade 4 events	221	284	269	246	284	596
	1%	1%	1%	1%	1%	1%
grade 5 events	902	967	844	986	1054	1950
	4%	4%	3%	4%	4%	6%
grade 6 events	480	579	407	459	580	7034
	2%	2%	1%	2%	2%	22%
grade 7 events	17333	16558	18782	17344	18574	16994
	82%	80%	84%	82%	83%	55%

2.2 Compared Parameters

Parameter	Planned	Actual	Parameter	Planned	Actual
Instrument	ACIS	ACIS	Obspar format version number	6	6
Detector	ACIS-012367	ACIS-012367	Obspar file type	PREDICTED	ACTUAL
Grating	NONE	NONE	Obspar update status	NONE	UPDATED
Data mode	FAINT	FAINT	On-chip summing requested	N	N
Observation mode	POINTING	POINTING	Subarray requested	NONE	NONE
Pointing RA	311.049349	311.0061878906661	Alternating exposures requested	N	N
Pointing Dec	-51.923058	-51.91668524185637	Primary exposure time	0.000000	3.2
Pointing Roll	135.875043	136.0497288347281			
SIM focus pos (mm)	-0.782348	-0.7809083437167272			
SIM defocus (mm)	0	0.001439871863259334			
SIM translation stage pos (mm)	-233.592463	-233.5874344608287			
SIM translation stage offset (mm)	0	-0.005018542100998502			
Observation start time	194784260.184000	194783064.14983			
Observation start date	2004-03-04T10:43:16	2004-03-04T10:24:24			
Observation end time	194787259.184000	194789059.37509			
Observation end date	2004-03-04T11:33:15	2004-03-04T12:04:19			
Read mode	TIMED	TIMED			

2.3 Aspect



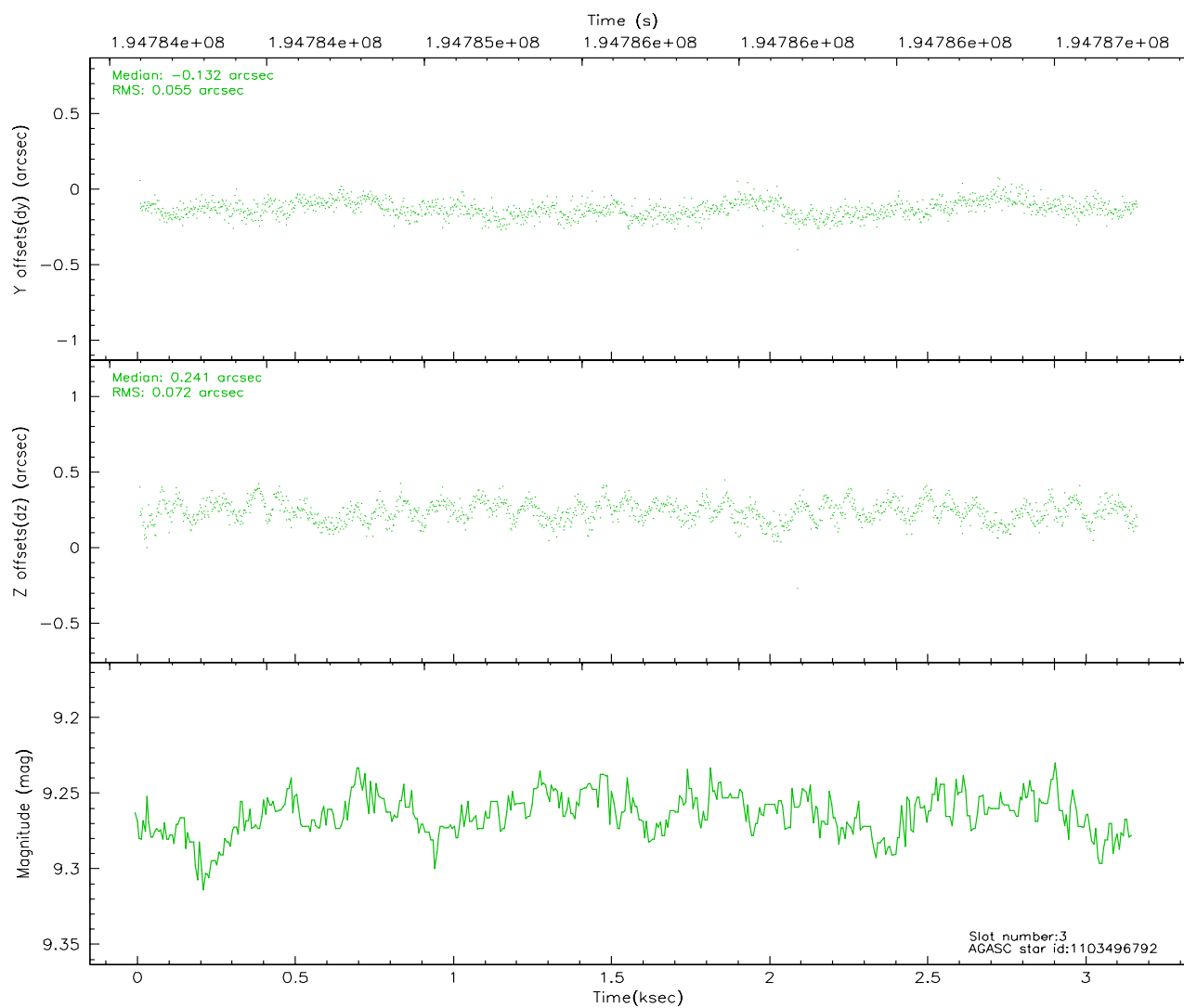
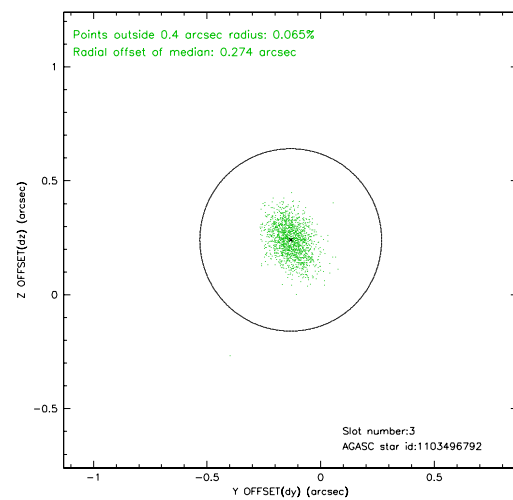
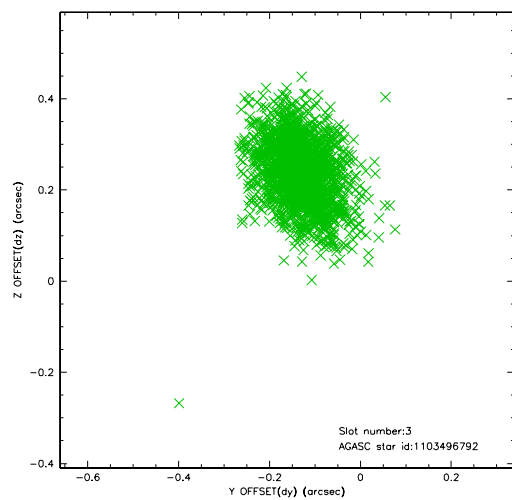


Slot Statistics

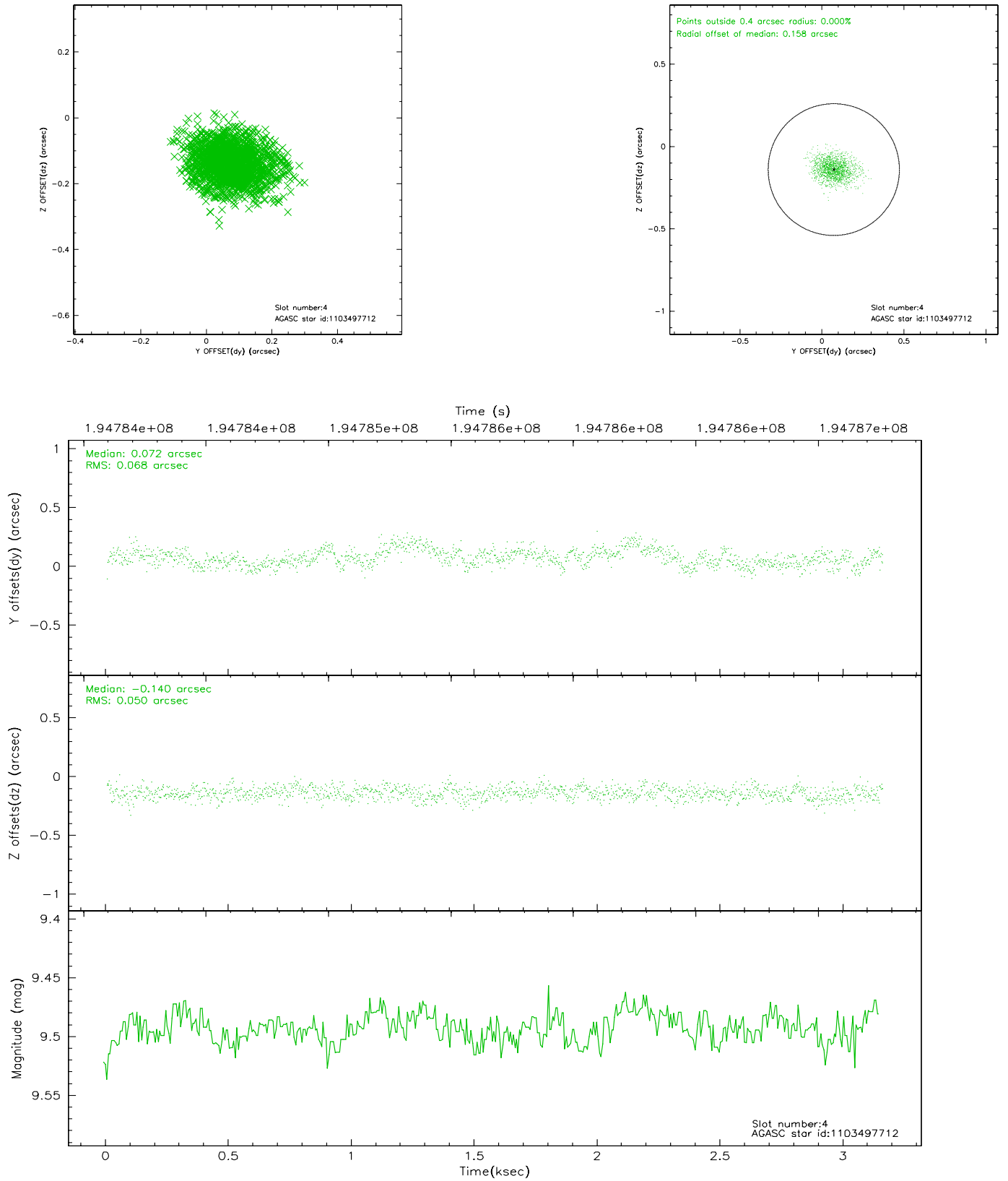
slot	status	id	mag	n_pts	med_dy	med_dz	dr1	dr2	ra	dec	mean_y	mean_z
0	FID	ACIS-I-1	7.23	770	0.017	0.023	0.007	0.012	0.000000	0.000000	931.44	-835.04
1	FID	ACIS-I-5	7.23	770	-0.128	0.050	0.006	0.010	0.000000	0.000000	-1815.64	1061.54
2	FID	ACIS-I-6	7.25	770	0.020	-0.003	0.007	0.011	0.000000	0.000000	394.87	1708.22
3	GUIDE	1103496792	9.26	1540	-0.132	0.241	0.095	0.157	311.409432	-51.348189	858.71	-2047.43
4	GUIDE	1103497712	9.49	1538	0.072	-0.140	0.089	0.149	311.089403	-52.274162	-942.58	844.28
5	GUIDE	1103498448	9.69	1537	0.004	-0.124	0.099	0.156	311.234357	-52.313056	-1270.56	724.91
6	GUIDE	1103629104	8.39	1540	-0.006	0.188	0.067	0.106	312.370349	-51.890519	-2044.03	-2108.27
7	GUIDE	1152254728	9.12	1539	0.059	-0.164	0.080	0.128	311.187430	-52.658266	-2060.69	1688.34

2.4 Star Slots

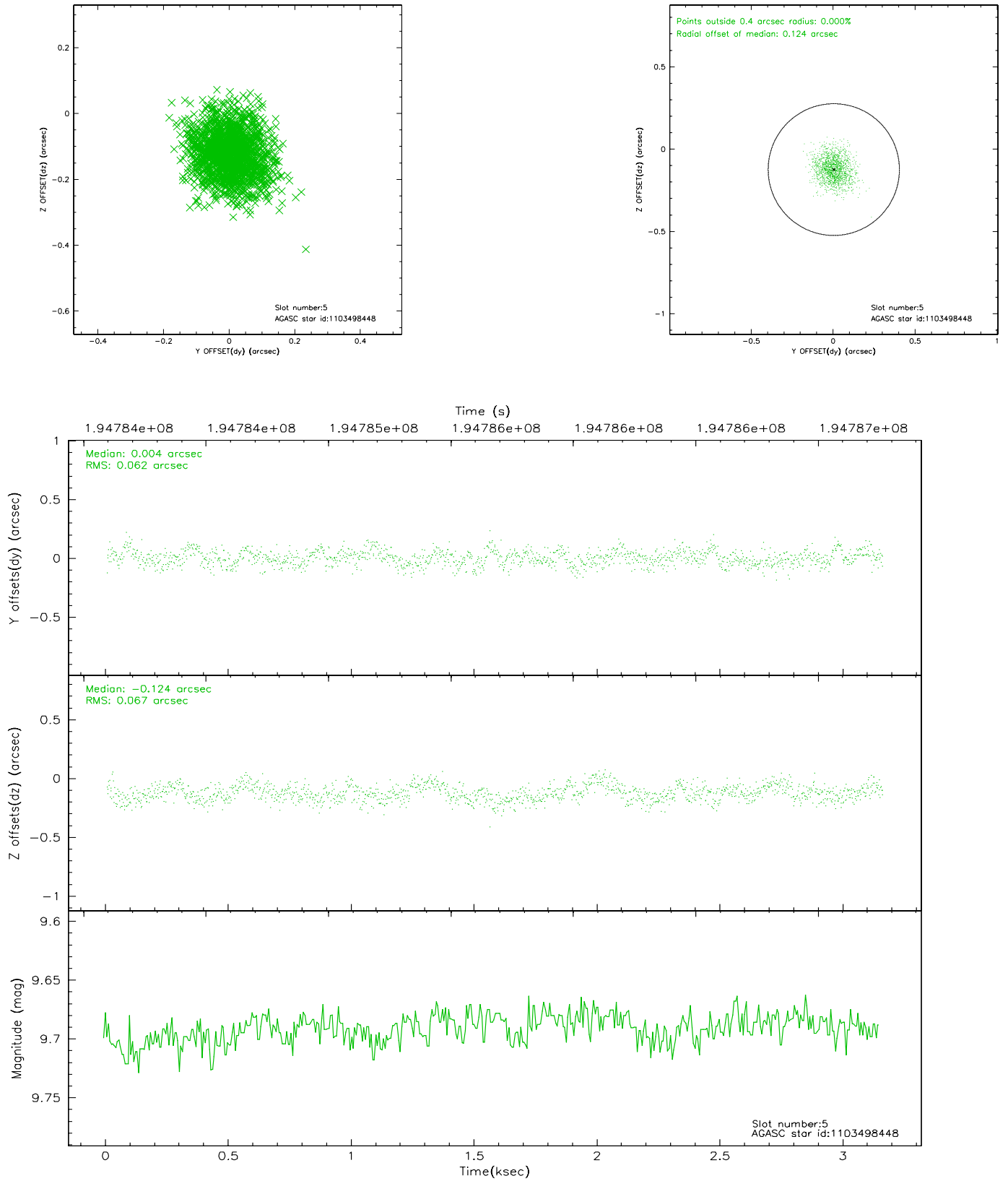
2.4.1 Slot 3



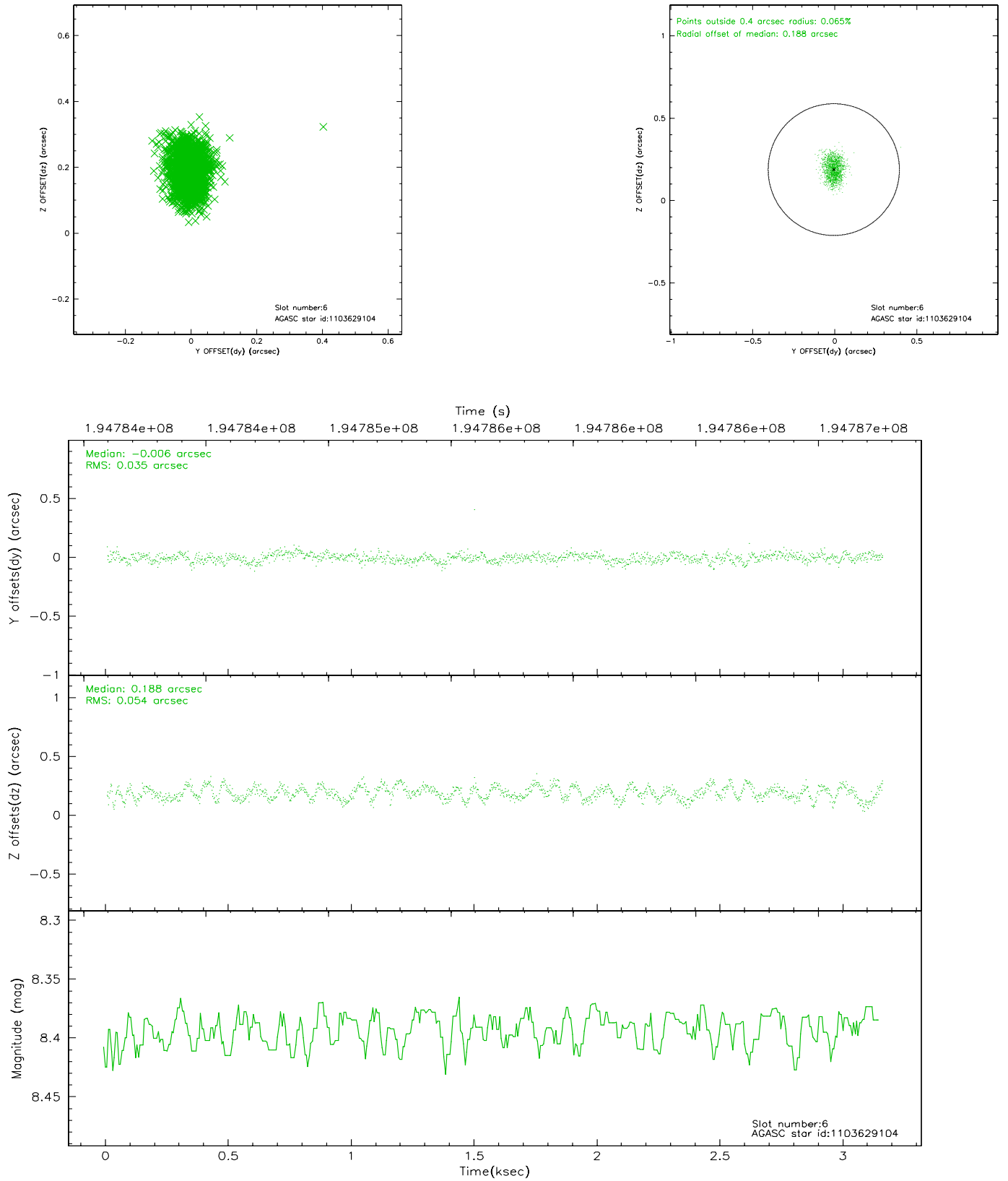
2.4.2 Slot 4



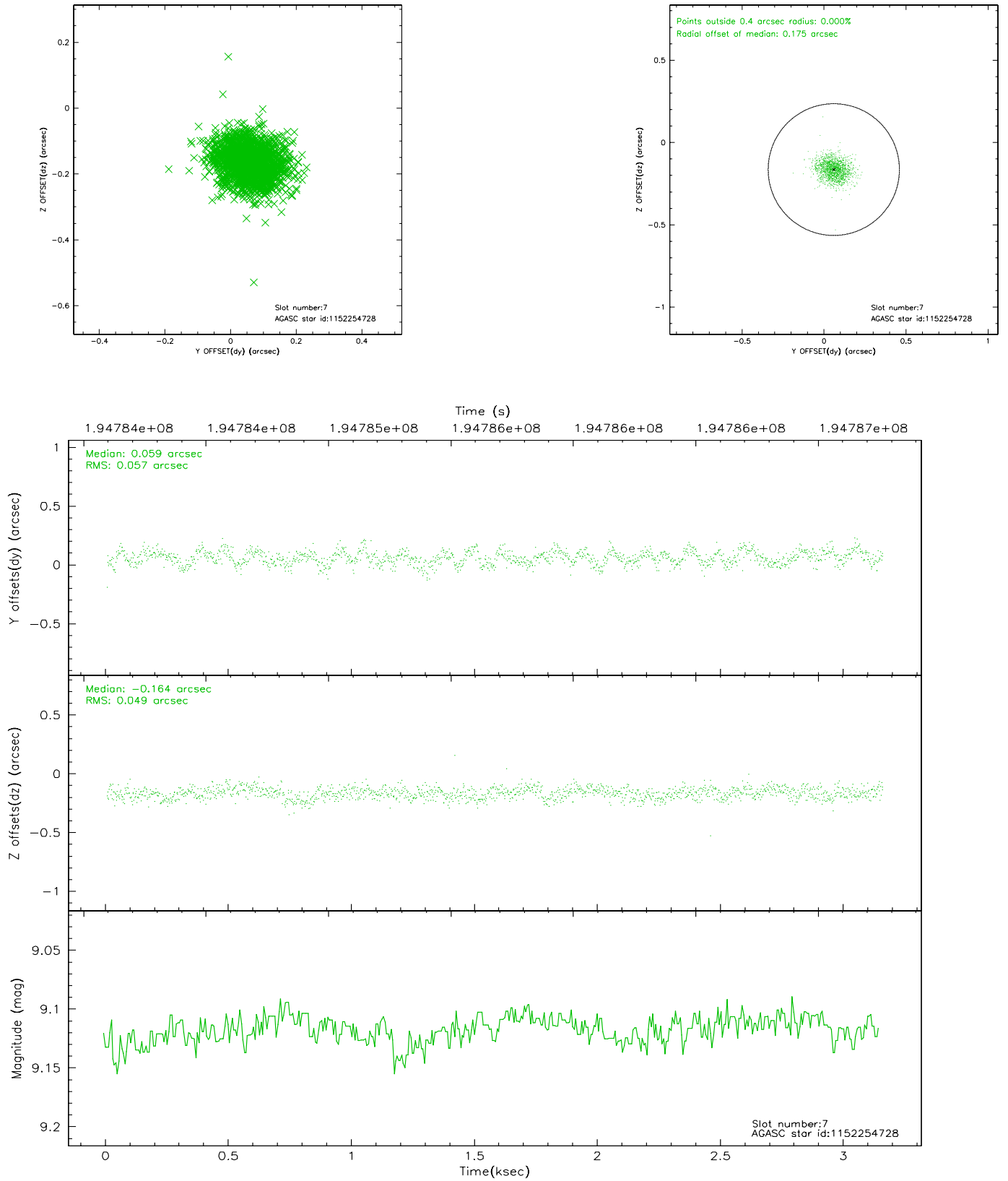
2.4.3 Slot 5



2.4.4 Slot 6

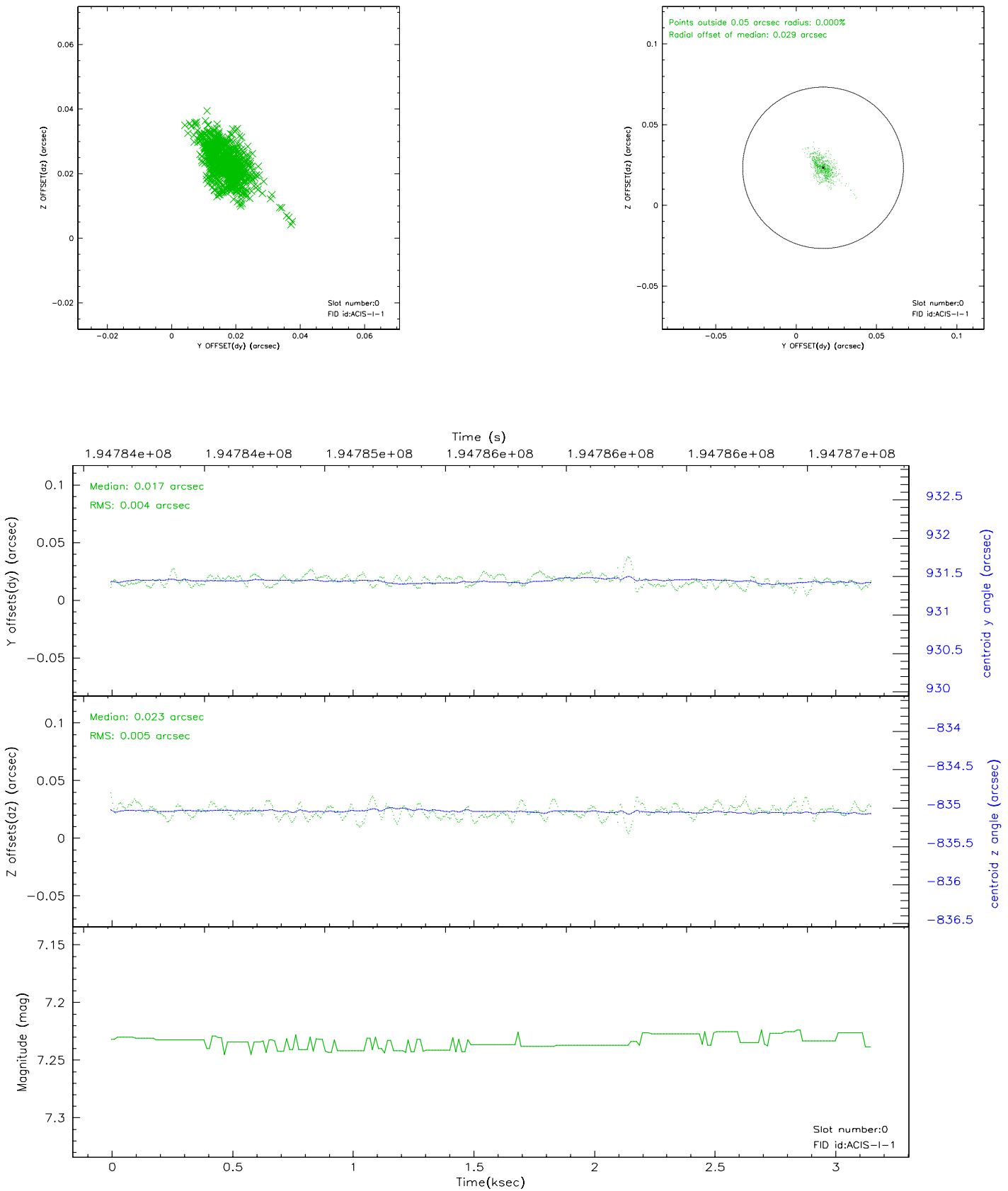


2.4.5 Slot 7

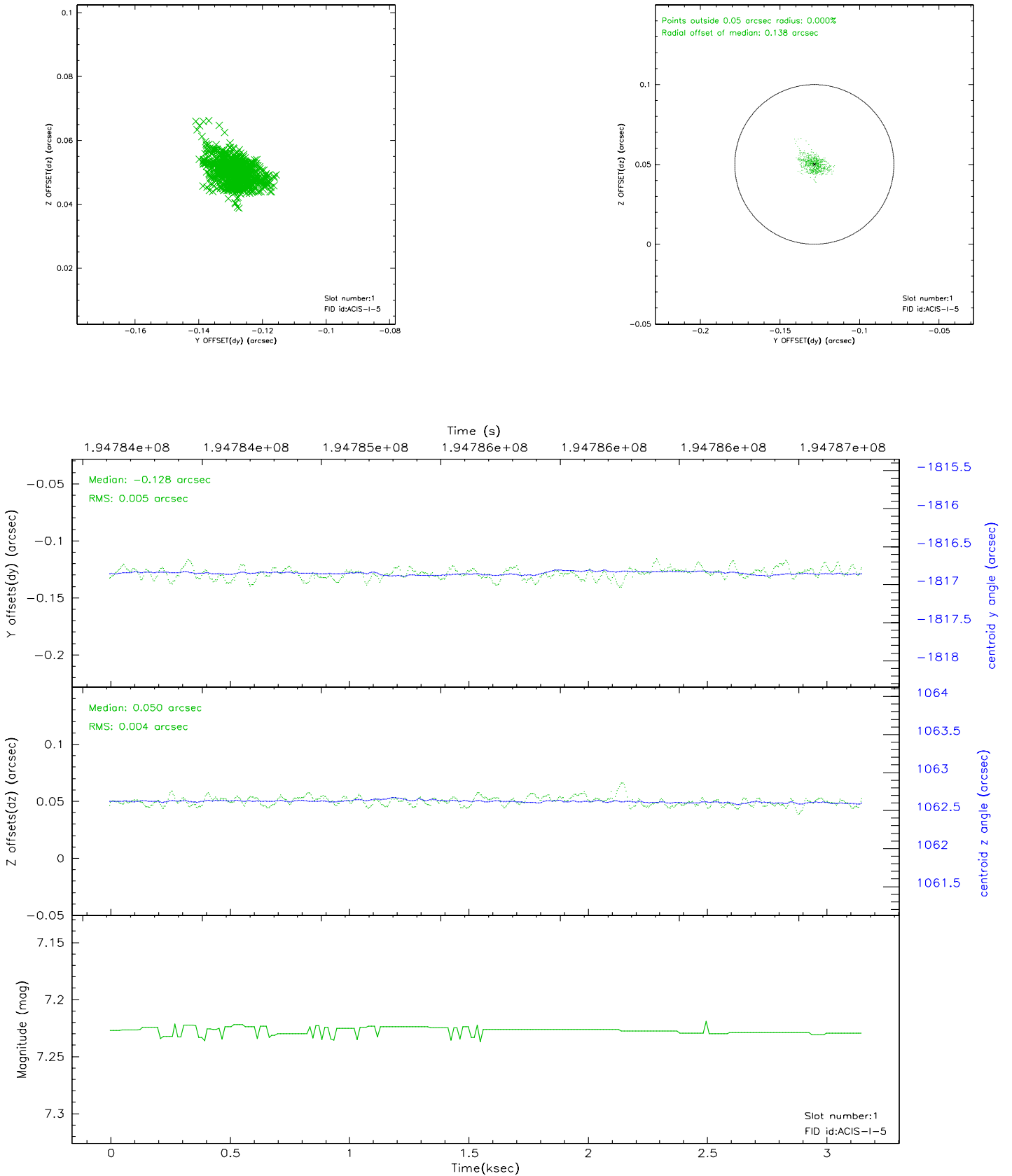


2.5 FID Slots

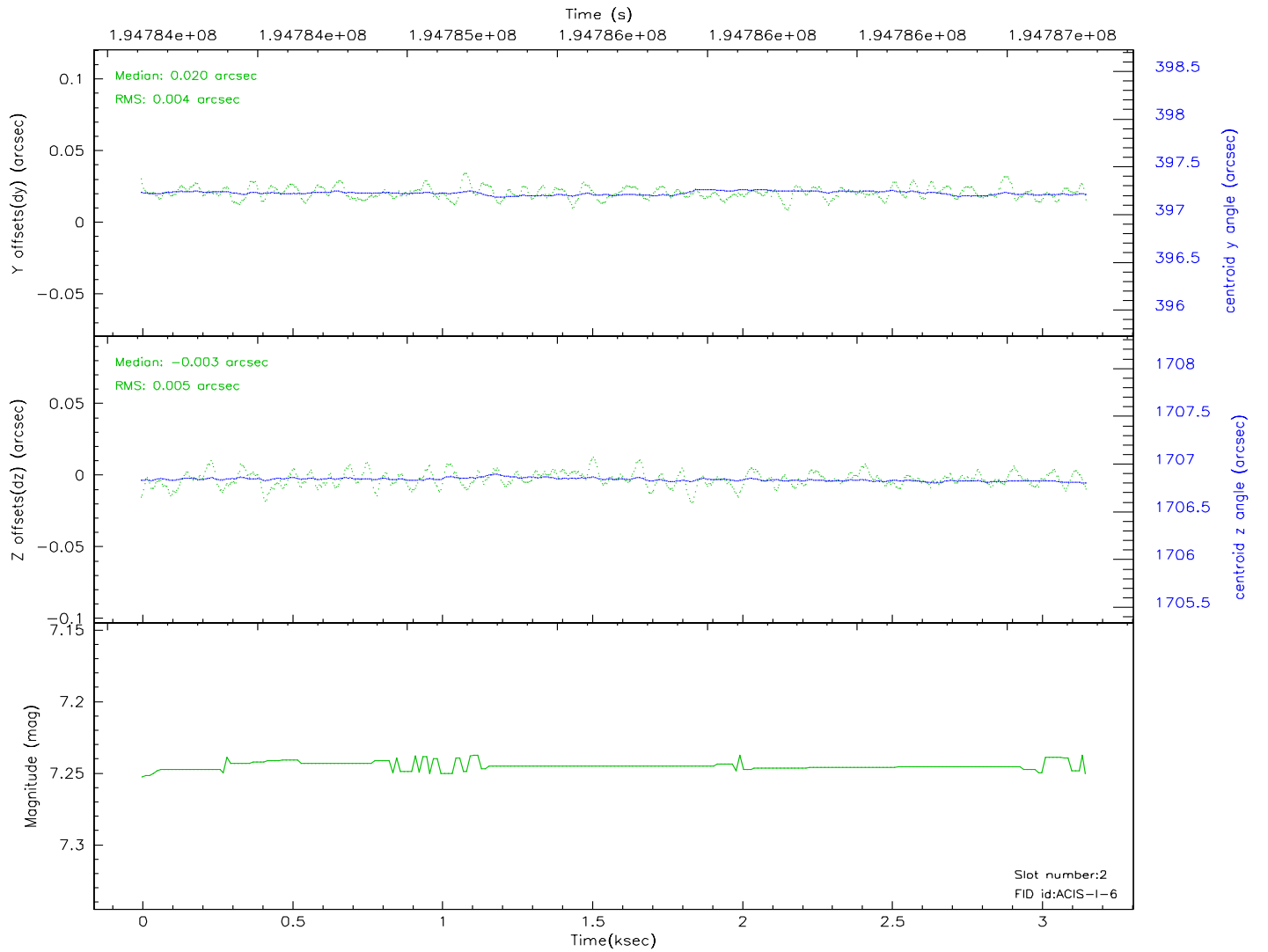
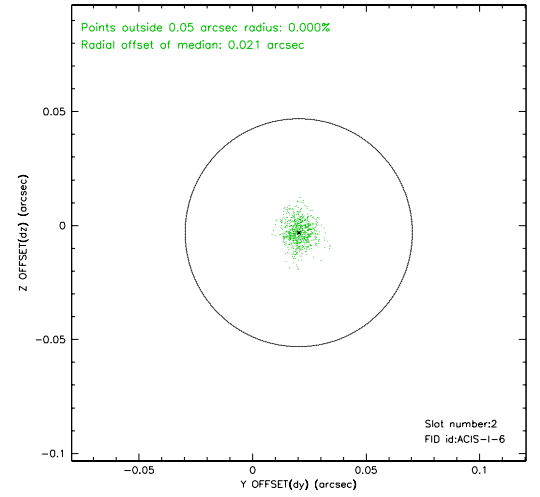
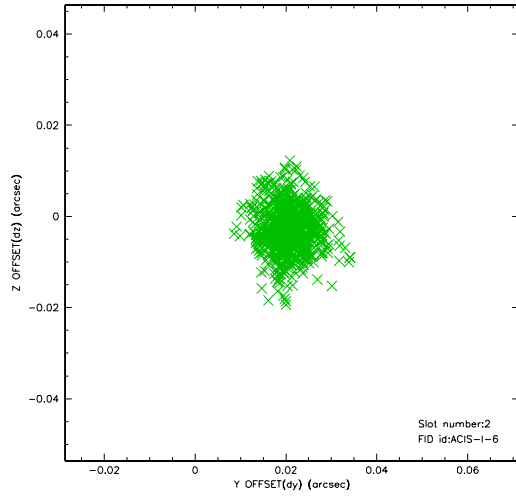
2.5.1 Slot 0



2.5.2 Slot 1

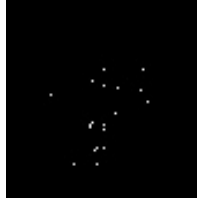


2.5.3 Slot 2



3 Point Sources

6.85 arcmin



A Summary

A.1 Status

V&V Scientist	Jen Lauer
V&V Date (YYYY-MM-DD)	2006.05.31
V&V Edition	1
V&V Disposition and Status	OK
V&V Charge Time	3.148

A.2 Comments