

V&V Reference Report

L2 ASCDS Version : 7.6.7.1

Observation 4491 - L2 Version 001
Chandra X-Ray Center

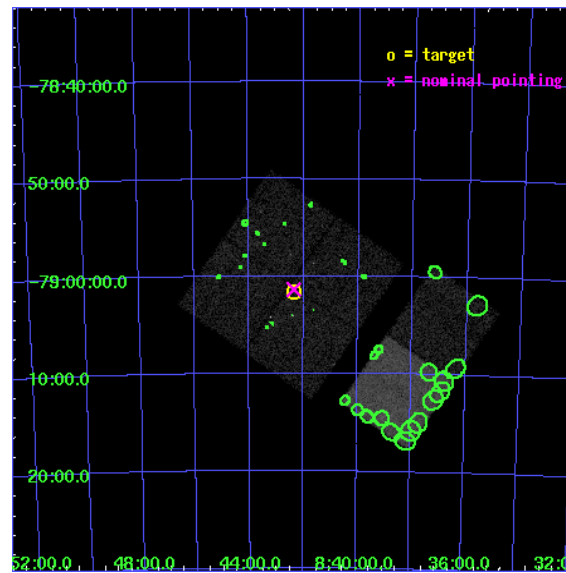
L2 Processing Date : Apr 16 2006

Contents

1	Front	2
2	OBI	3
2.1	OBI	3
2.1.1	Images	3
2.1.2	Bias	3
2.1.3	Parameters	4
2.1.4	Events	4
2.2	Compared Parameters	5
2.3	Aspect	6
2.4	Star Slots	9
2.4.1	Slot 3	9
2.4.2	Slot 4	10
2.4.3	Slot 5	11
2.4.4	Slot 6	12
2.4.5	Slot 7	13
2.5	FID Slots	14
2.5.1	Slot 0	14
2.5.2	Slot 1	15
2.5.3	Slot 2	16
3	Point Sources	17
A	Summary	18
A.1	Status	18
A.2	Comments	18

1 Front

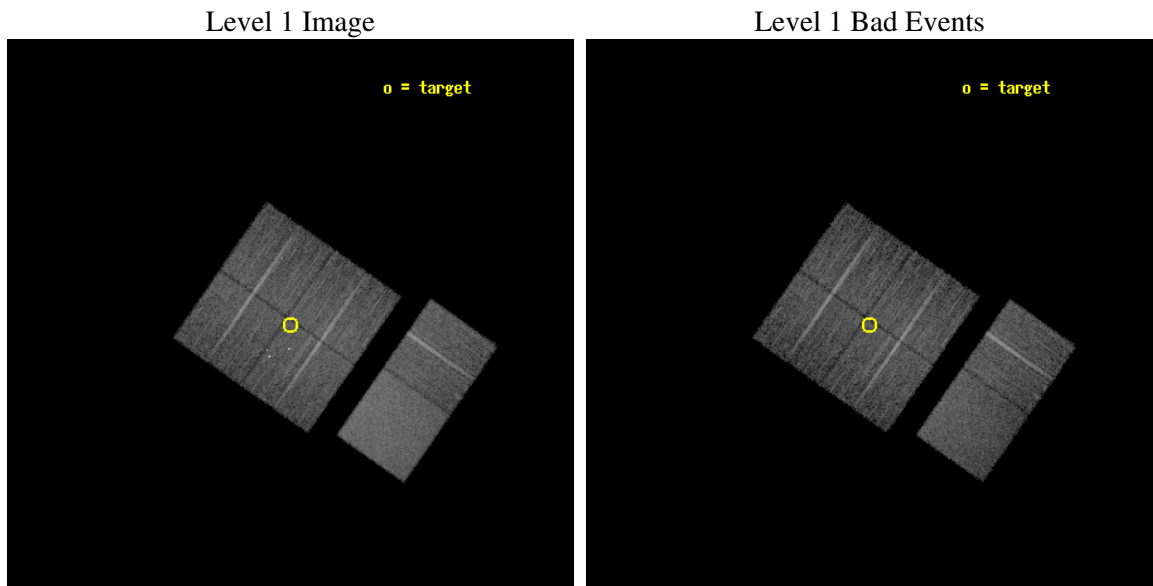
seq_num	200260
obs_id	4491
title	Planet formation and the missing 10 Myr old stars
observer	Prof. Eric Feigelson
object	eta Cha
dtcycle	0
cycle	P
ra_targ	130.591667
dec_targ	-79.027222
ra_nom	130.58678227175
dec_nom	-79.022721541508
roll_nom	124.86409918882
revision	2
ontime	10118.399962306
livetime	9990.2746894143
ontime0	10118.399962306
ontime1	10118.399962306
ontime2	10118.399962306
ontime3	10118.399962306
ontime6	10118.399962306
ontime7	10118.399962306
l2events	79754



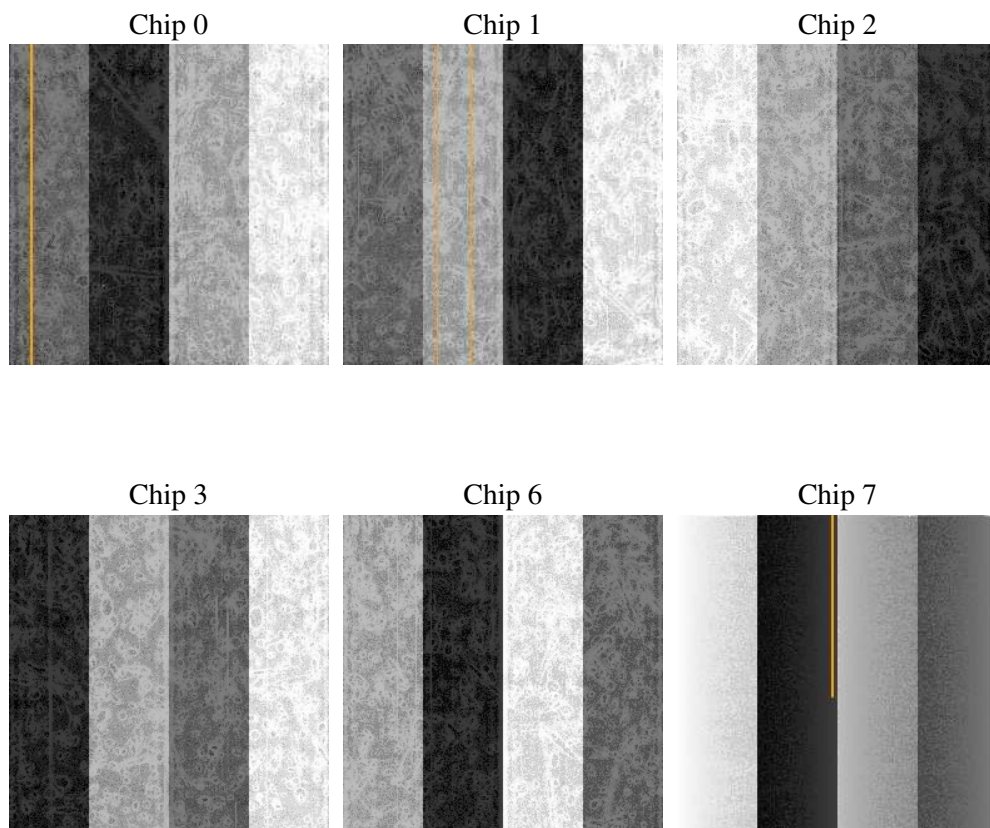
2 OBI

2.1 OBI

2.1.1 Images



2.1.2 Bias



2.1.3 Parameters

obi_num	0
ascdsver	7.6.7.1
caldbver	3.2.1
date	2006-04-16T17:30:32
revision	2

sched_exp_time	10000.000000
ontime	11411.572170168
ontime0	11411.572140276
ontime1	11411.572140276
ontime2	11411.572140276
ontime3	11411.572170168
ontime6	11411.572140276
ontime7	11411.572170168
l1events	537124

2.1.4 Events

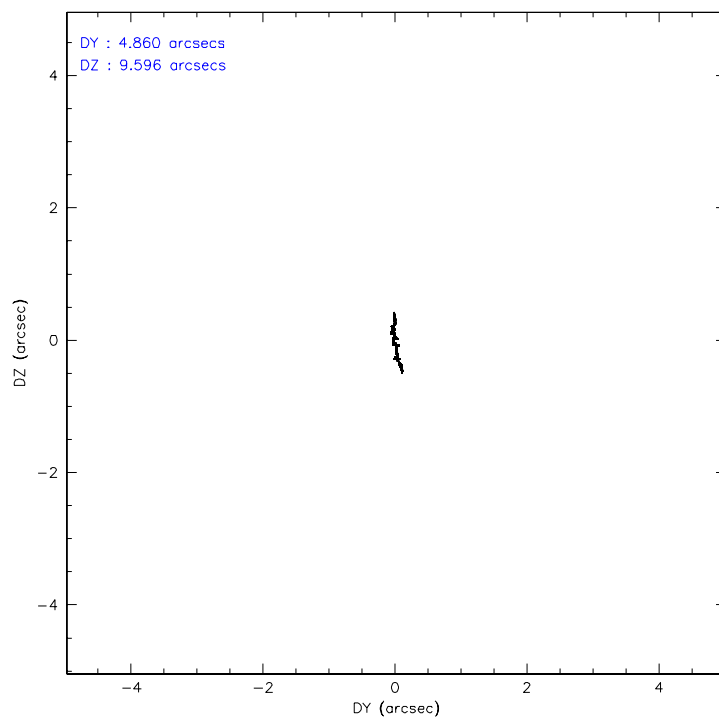
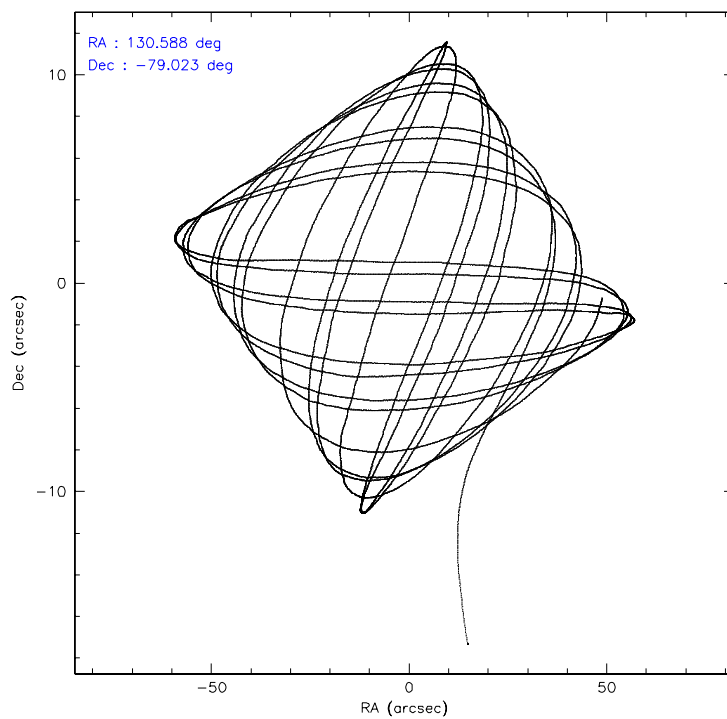
	ccd 0	ccd 1	ccd 2	ccd 3	ccd 6	ccd 7
level 1 events	81017	77693	87071	85988	89529	115826
rejected events	71721	68265	78161	74237	80557	77141
rejected %	88%	87%	89%	86%	89%	66%

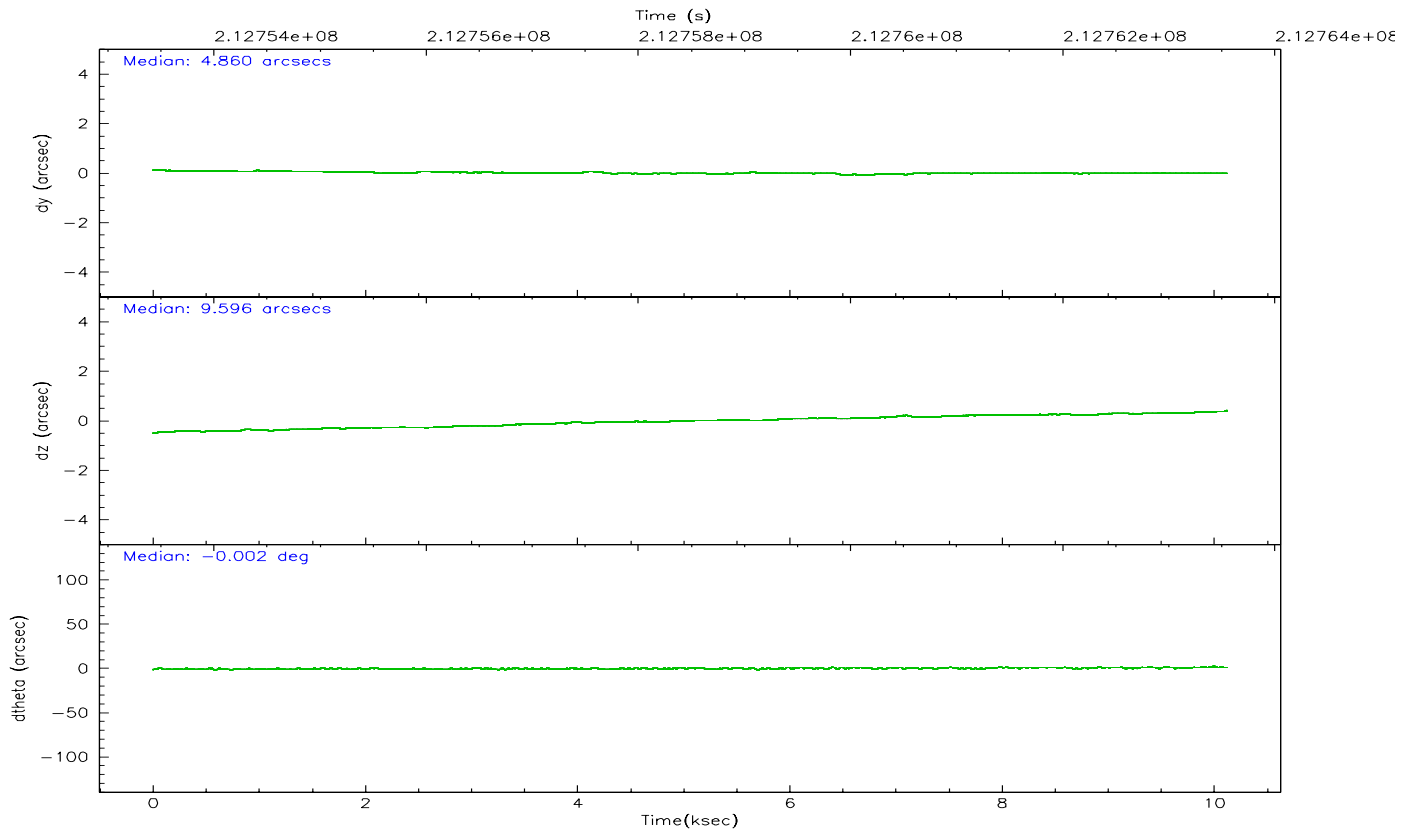
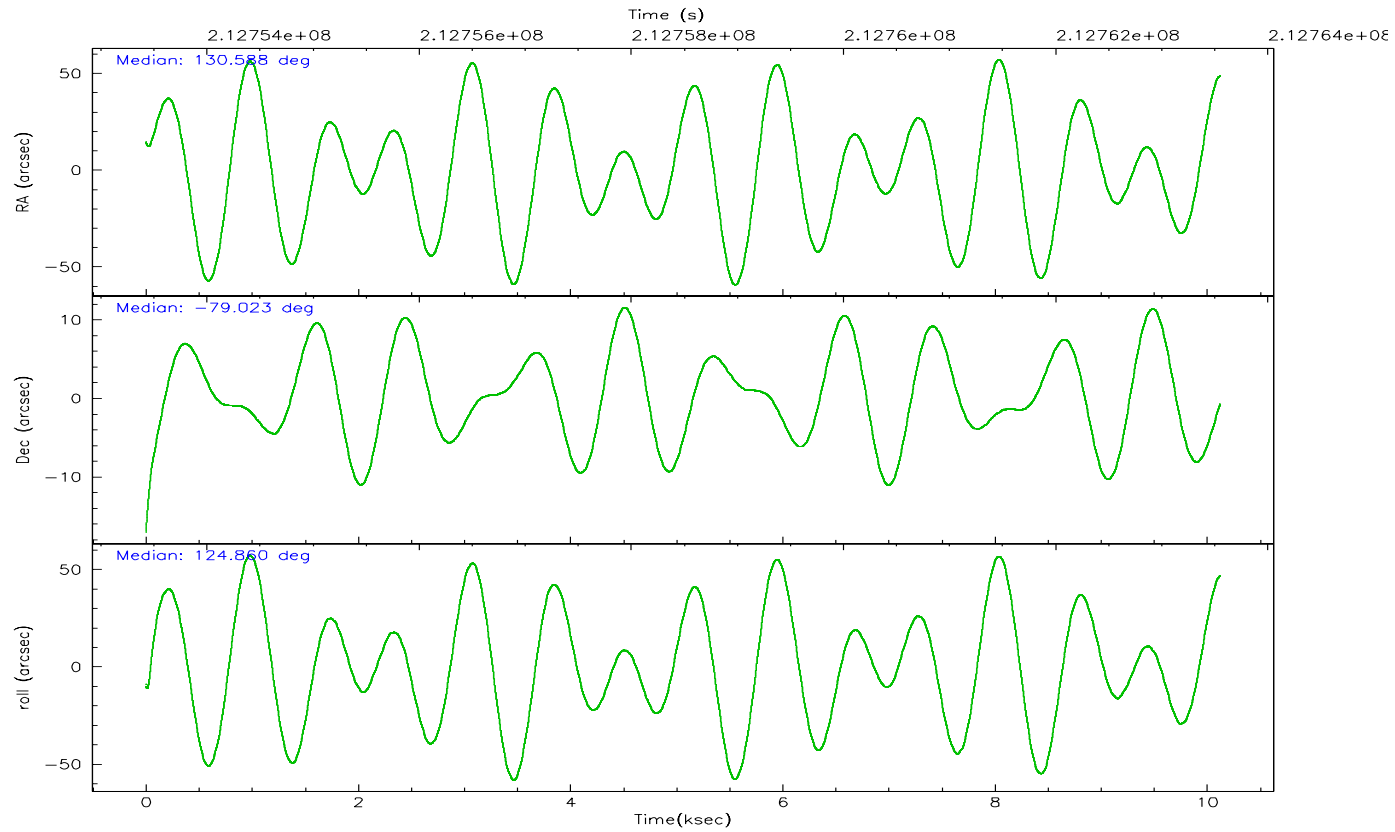
	ccd 0	ccd 1	ccd 2	ccd 3	ccd 6	ccd 7
grade 0 events	4506	4102	4521	6815	3862	2404
	5%	5%	5%	7%	4%	2%
grade 1 events	46	26	45	161	46	61
	0%	0%	0%	0%	0%	0%
grade 2 events	2196	2373	2005	2188	2097	10770
	2%	3%	2%	2%	2%	9%
grade 3 events	1048	1013	942	1043	1042	2218
	1%	1%	1%	1%	1%	1%
grade 4 events	897	1058	956	1059	1014	2091
	1%	1%	1%	1%	1%	1%
grade 5 events	3419	3635	3262	3857	4182	7532
	4%	4%	3%	4%	4%	6%
grade 6 events	1799	2101	1648	1815	2064	26144
	2%	2%	1%	2%	2%	22%
grade 7 events	67106	63385	73692	69050	75222	64606
	82%	81%	84%	80%	84%	55%

2.2 Compared Parameters

Parameter	Planned	Actual	Parameter	Planned	Actual
Instrument	ACIS	ACIS	Obspar format version number	6	6
Detector	ACIS-012367	ACIS-012367	Obspar file type	PREDICTED	ACTUAL
Grating	NONE	NONE	Obspar update status	NONE	UPDATED
Data mode	FAINT	FAINT	On-chip summing requested	N	N
Observation mode	POINTING	POINTING	Subarray requested	NONE	NONE
Pointing RA	130.717197	130.5867822717487	Alternating exposures requested	N	N
Pointing Dec	-79.034192	-79.02272154150825	Primary exposure time	0.000000	3.2
Pointing Roll	124.783472	124.8640991888197			
SIM focus pos (mm)	-0.782348	-0.7809083437167272			
SIM defocus (mm)	0	0.001439871863259334			
SIM translation stage pos (mm)	-233.592463	-233.5874344608287			
SIM translation stage offset (mm)	0	-0.005018542100998502			
Observation start time	212753545.184000	212751860.75776			
Observation start date	2004-09-28T10:11:21	2004-09-28T09:44:20			
Observation end time	212763545.184000	212764082.34581			
Observation end date	2004-09-28T12:58:01	2004-09-28T13:08:02			
Read mode	TIMED	TIMED			

2.3 Aspect



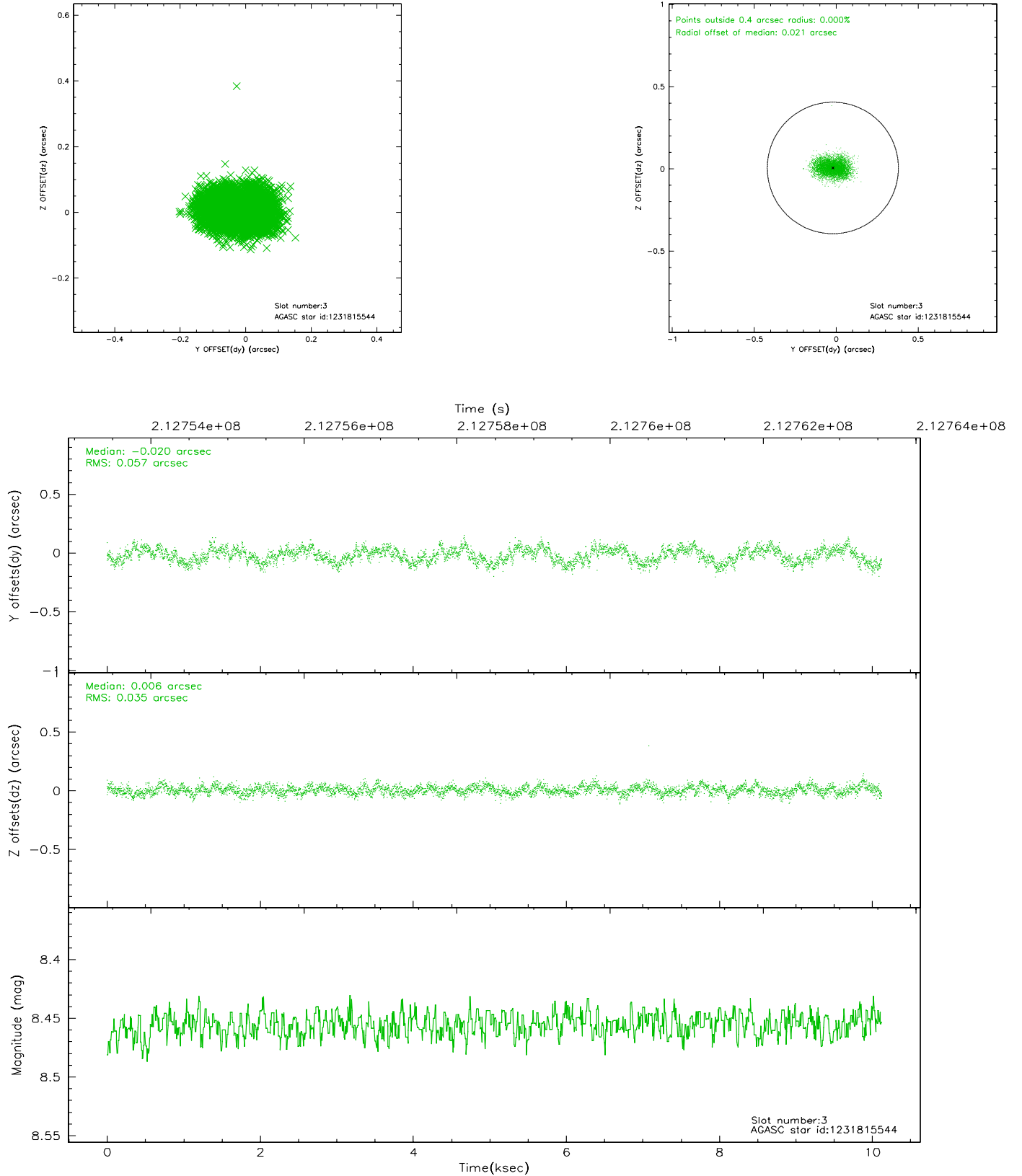


Slot Statistics

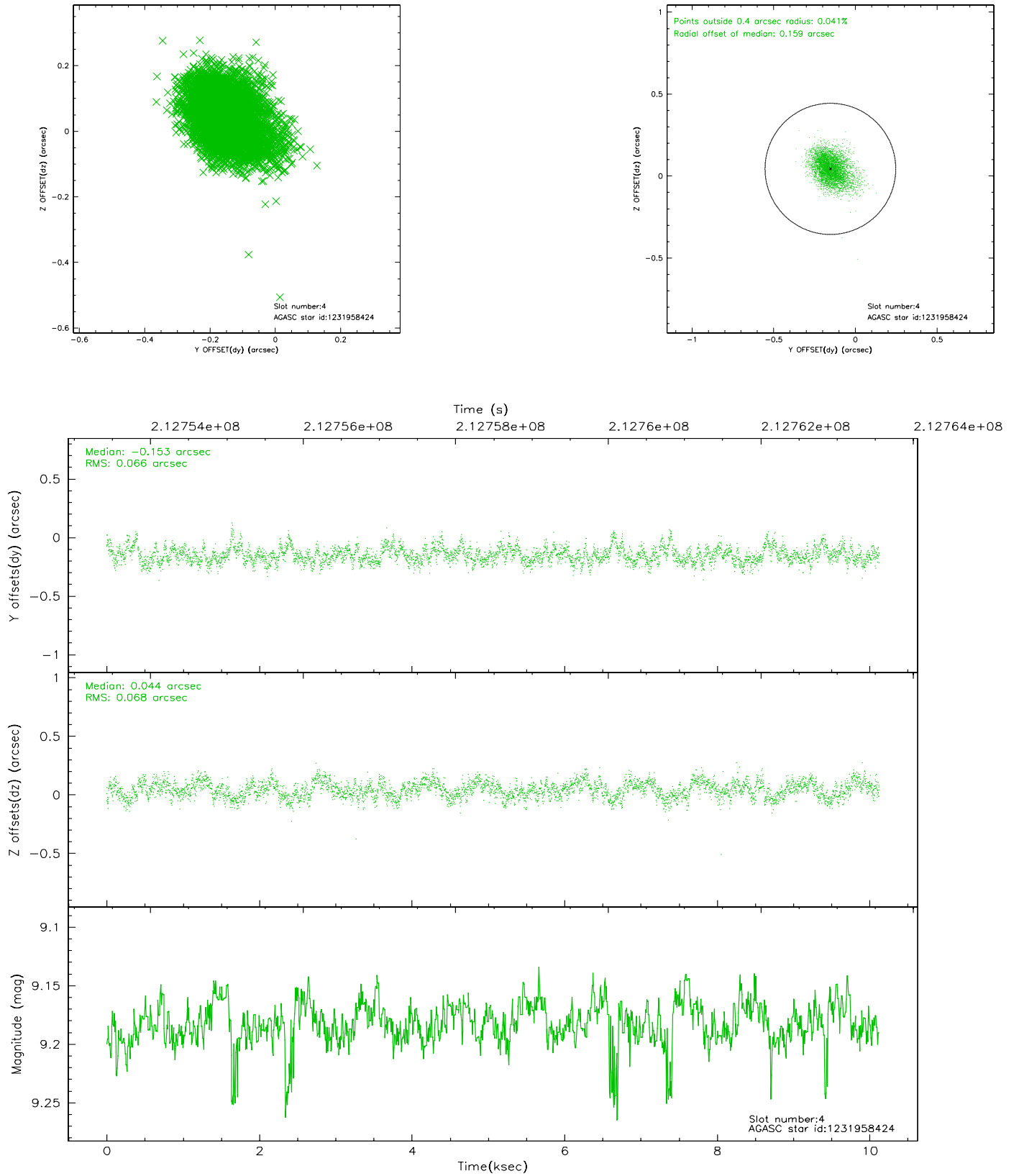
slot	status	id	mag	n_pts	med_dy	med_dz	dr1	dr2	ra	dec	mean_y	mean_z
0	FID	ACIS-I-1	7.24	2470	-0.011	0.057	0.012	0.019	0.000000	0.000000	934.86	-832.97
1	FID	ACIS-I-5	7.22	2470	-0.138	0.023	0.007	0.011	0.000000	0.000000	-1813.10	1064.21
2	FID	ACIS-I-6	7.25	2470	0.058	-0.009	0.013	0.021	0.000000	0.000000	399.89	1709.28
3	GUIDE	1231815544	8.46	4939	-0.020	0.006	0.072	0.115	127.722617	-78.704866	2133.87	1088.34
4	GUIDE	1231958424	9.18	4929	-0.153	0.044	0.099	0.164	132.573445	-78.483269	851.58	-2214.46
5	GUIDE	1232483360	8.20	4939	0.013	0.016	0.062	0.102	130.079659	-79.674033	-1659.15	1652.49
6	GUIDE	1231817112	9.50	4936	0.074	0.044	0.110	0.176	127.625827	-78.657948	2313.10	1057.93
7	GUIDE	1232471888	8.66	4938	0.086	-0.101	0.092	0.142	134.188873	-78.796681	-740.31	-2439.55

2.4 Star Slots

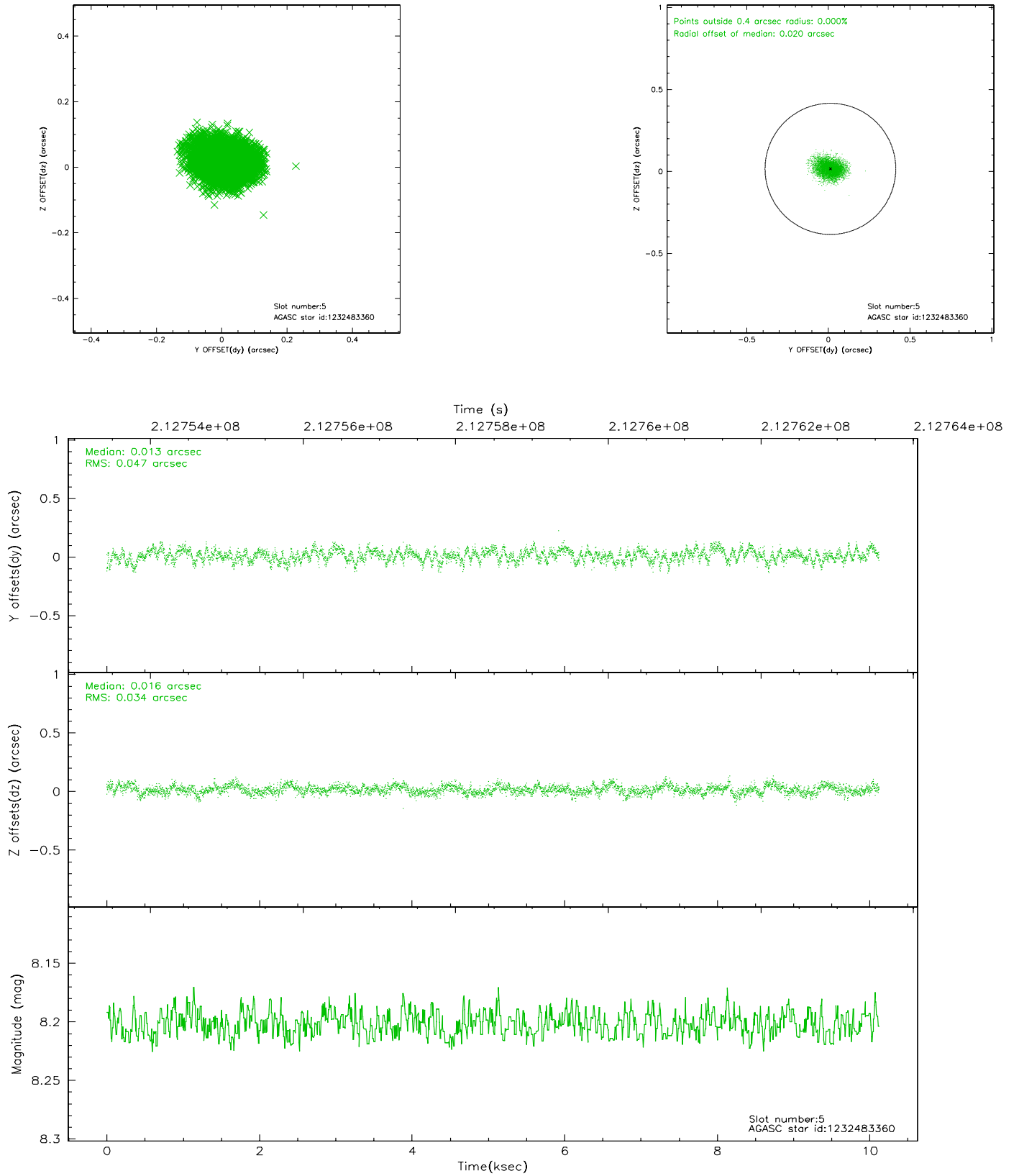
2.4.1 Slot 3



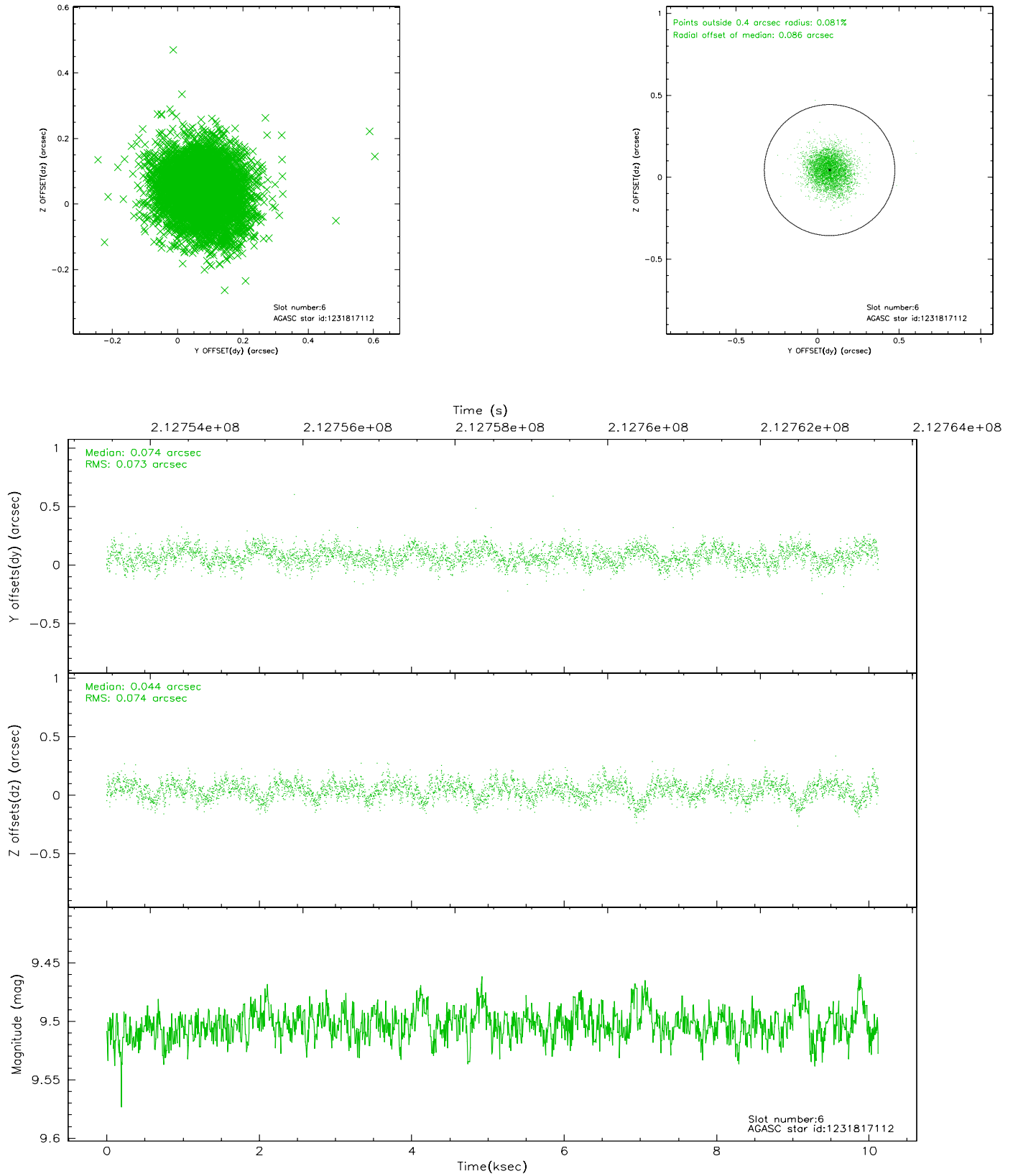
2.4.2 Slot 4



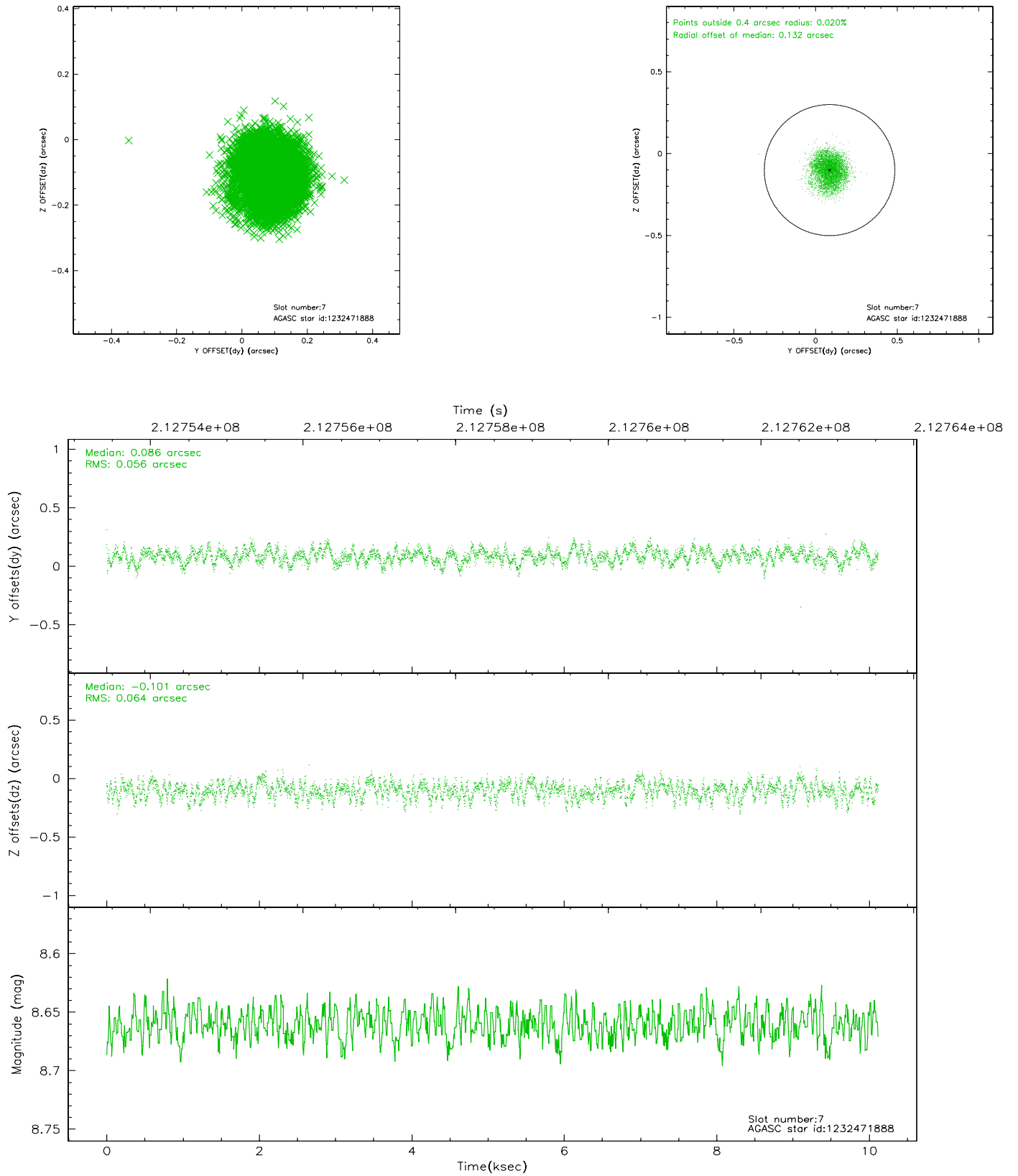
2.4.3 Slot 5



2.4.4 Slot 6

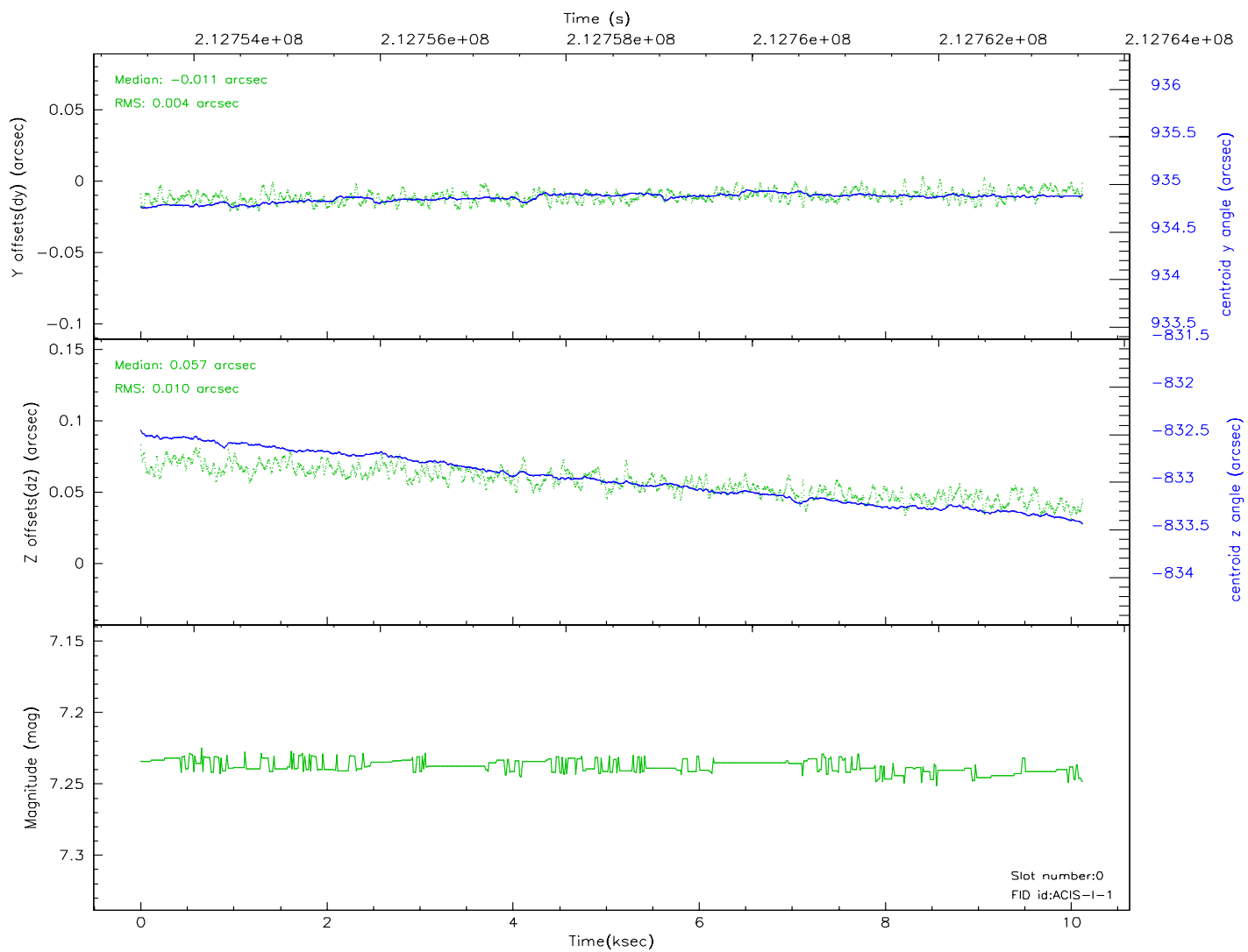
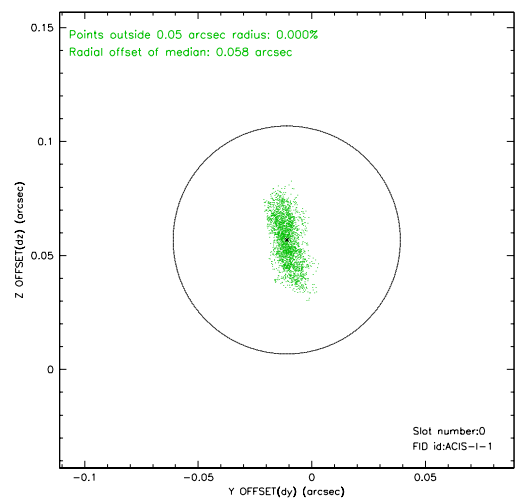
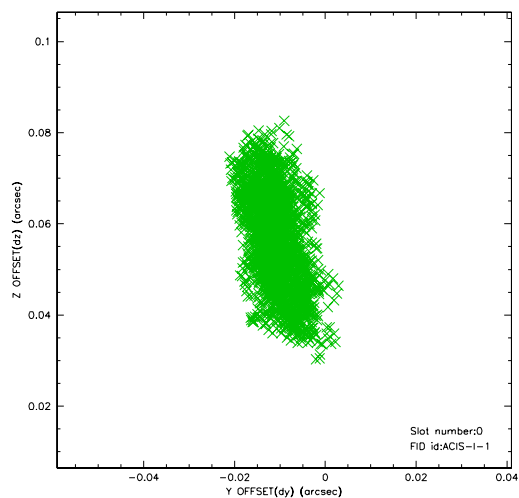


2.4.5 Slot 7

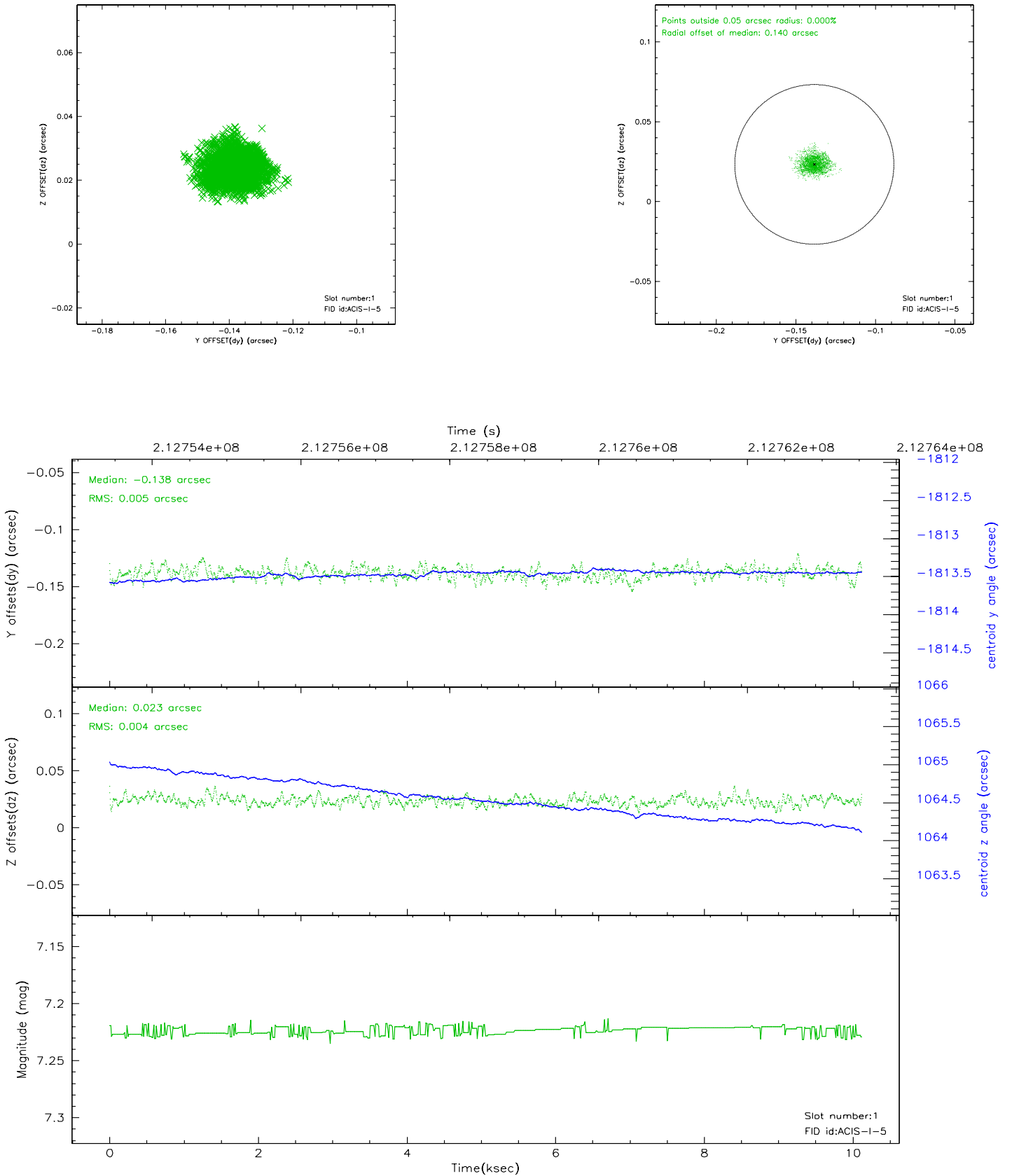


2.5 FID Slots

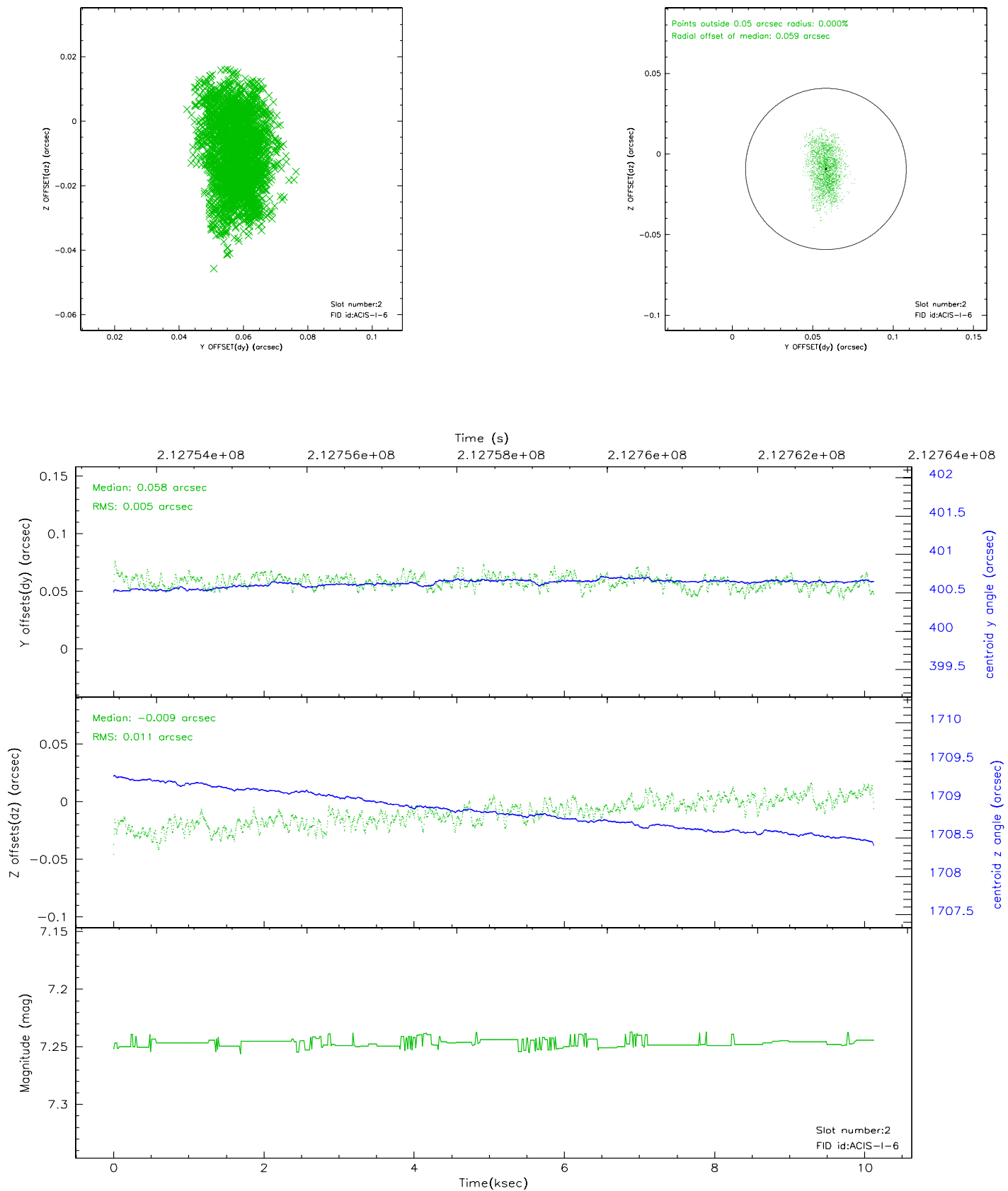
2.5.1 Slot 0



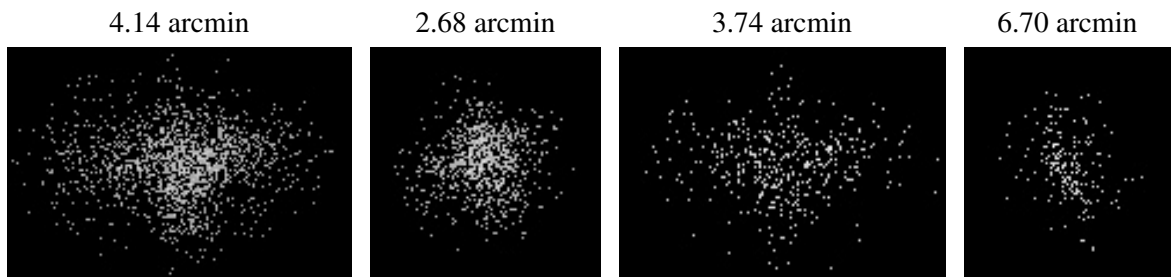
2.5.2 Slot 1



2.5.3 Slot 2



3 Point Sources



A Summary

A.1 Status

V&V Scientist	Beth Sundheim
V&V Date (YYYY-MM-DD)	2006.04.16
V&V Edition	1
V&V Disposition and Status	OK
V&V Charge Time	10.118

A.2 Comments