

V&V Reference Report

L2 ASCDS Version : 7.6.7.1

Observation 4485 - L2 Version 002
Chandra X-Ray Center

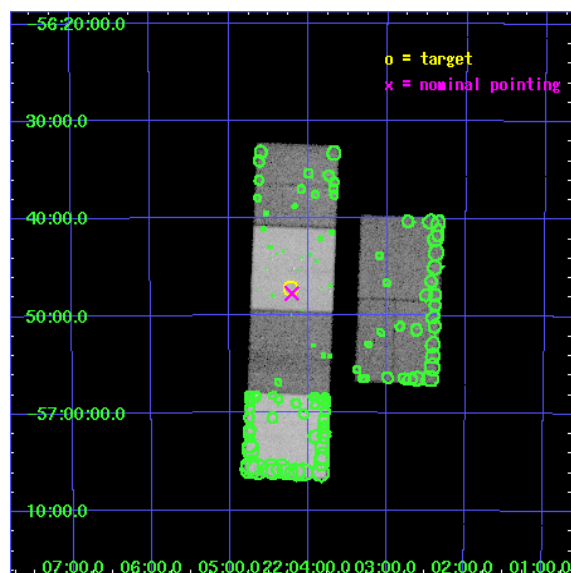
L2 Processing Date : Apr 8 2006

Contents

1	Front	2
2	OBI	3
2.1	OBI	3
2.1.1	Images	3
2.1.2	Bias	3
2.1.3	Parameters	4
2.1.4	Events	4
2.2	Compared Parameters	5
2.3	Aspect	6
2.4	Star Slots	9
2.4.1	Slot 3	9
2.4.2	Slot 4	10
2.4.3	Slot 5	11
2.4.4	Slot 6	12
2.4.5	Slot 7	13
2.5	FID Slots	14
2.5.1	Slot 0	14
2.5.2	Slot 1	15
2.5.3	Slot 2	16
3	Point Sources	17
A	Summary	18
A.1	Status	18
A.2	Comments	18

1 Front

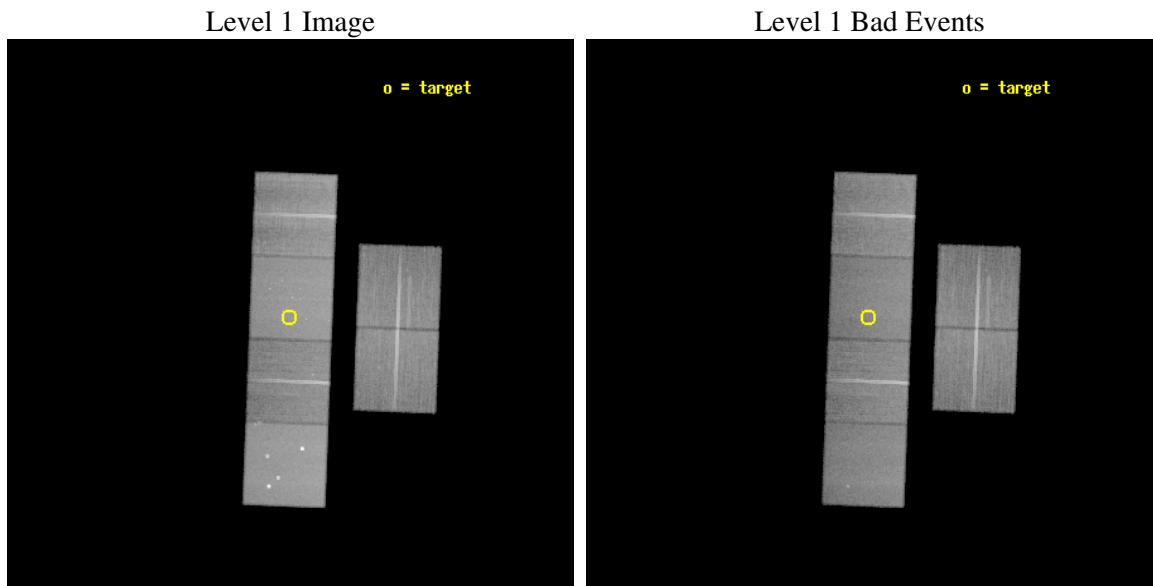
seq_num	200254
obs_id	4485
title	A DEEP LOOK AT THE NEAREST BROWN DWARF: EPSILON INDI B, A T2.5 DWARF
observer	Dr Marc Audard
object	EPSILON INDI B
dtcycle	0
cycle	P
ra_targ	331.054167
dec_targ	-56.78625
ra_nom	331.05173153376
dec_nom	-56.795809380374
roll_nom	272.15457894215
revision	2
ontime	39644.799852312
livetime	39142.793525349
ontime2	39635.076971382
ontime3	39635.077051044
ontime5	39644.799852312
ontime6	39641.558882028
ontime7	39644.799852312
ontime8	39638.318031311
l2events	470659



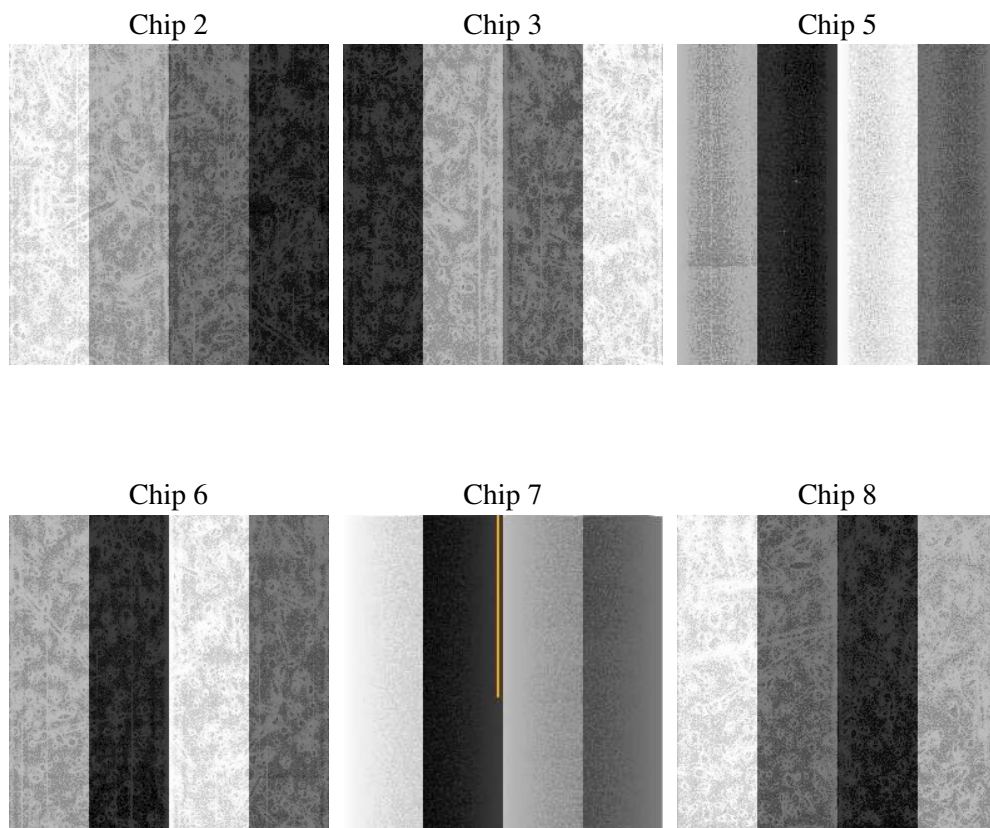
2 OBI

2.1 OBI

2.1.1 Images



2.1.2 Bias



2.1.3 Parameters

obi_num	0
ascdsver	7.6.7.1
caldsver	3.2.1
date	2006-04-08T18:29:42
revision	2

sched_exp_time	39500.000000
ontime	39776.822139263
ontime2	39767.099238455
ontime3	39767.099288166
ontime5	39776.822139263
ontime6	39773.581149101
ontime7	39776.822139263
ontime8	39770.340298384
l1events	2149095

2.1.4 Events

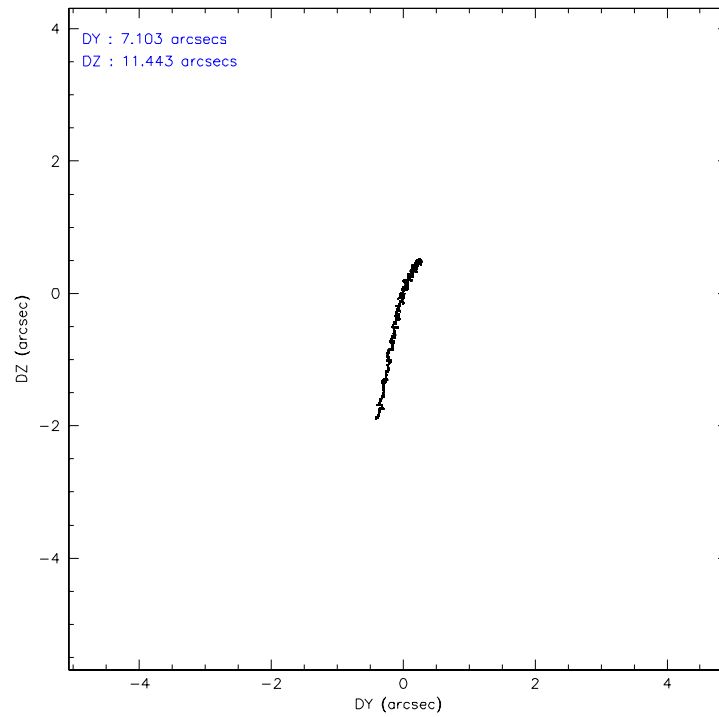
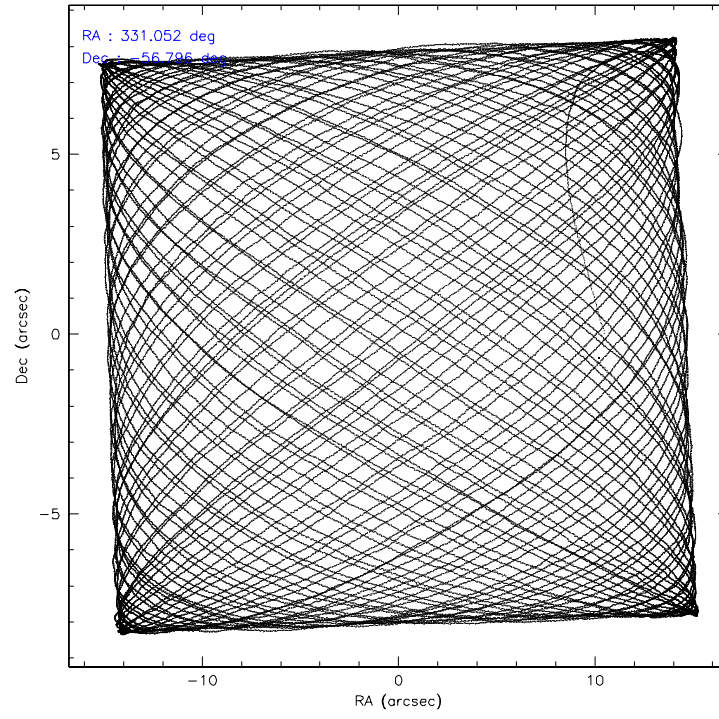
	ccd 2	ccd 3	ccd 5	ccd 6	ccd 7	ccd 8
level 1 events	309996	291821	457001	301685	407248	381344
rejected events	273489	256736	248462	265943	250977	295449
rejected %	88%	87%	54%	88%	61%	77%

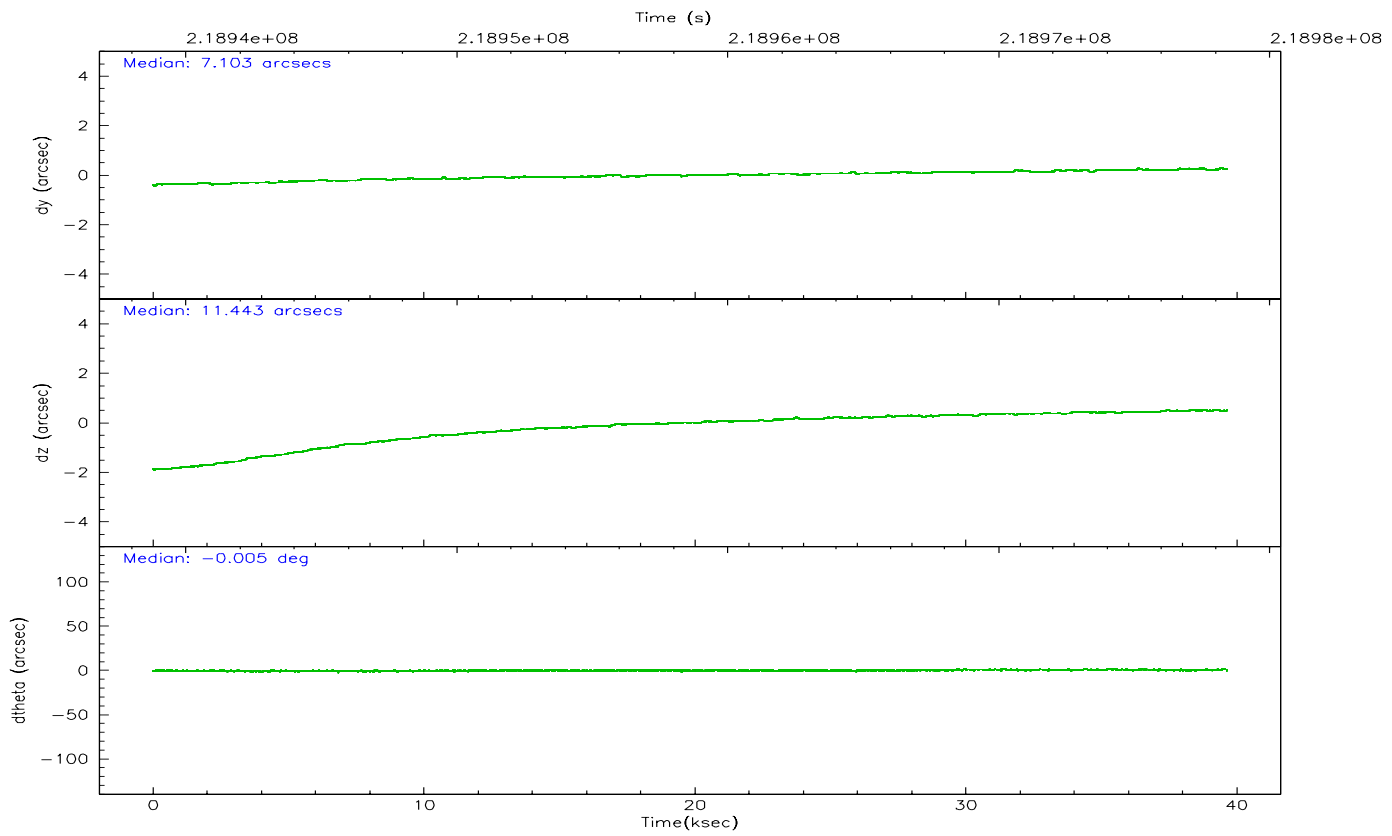
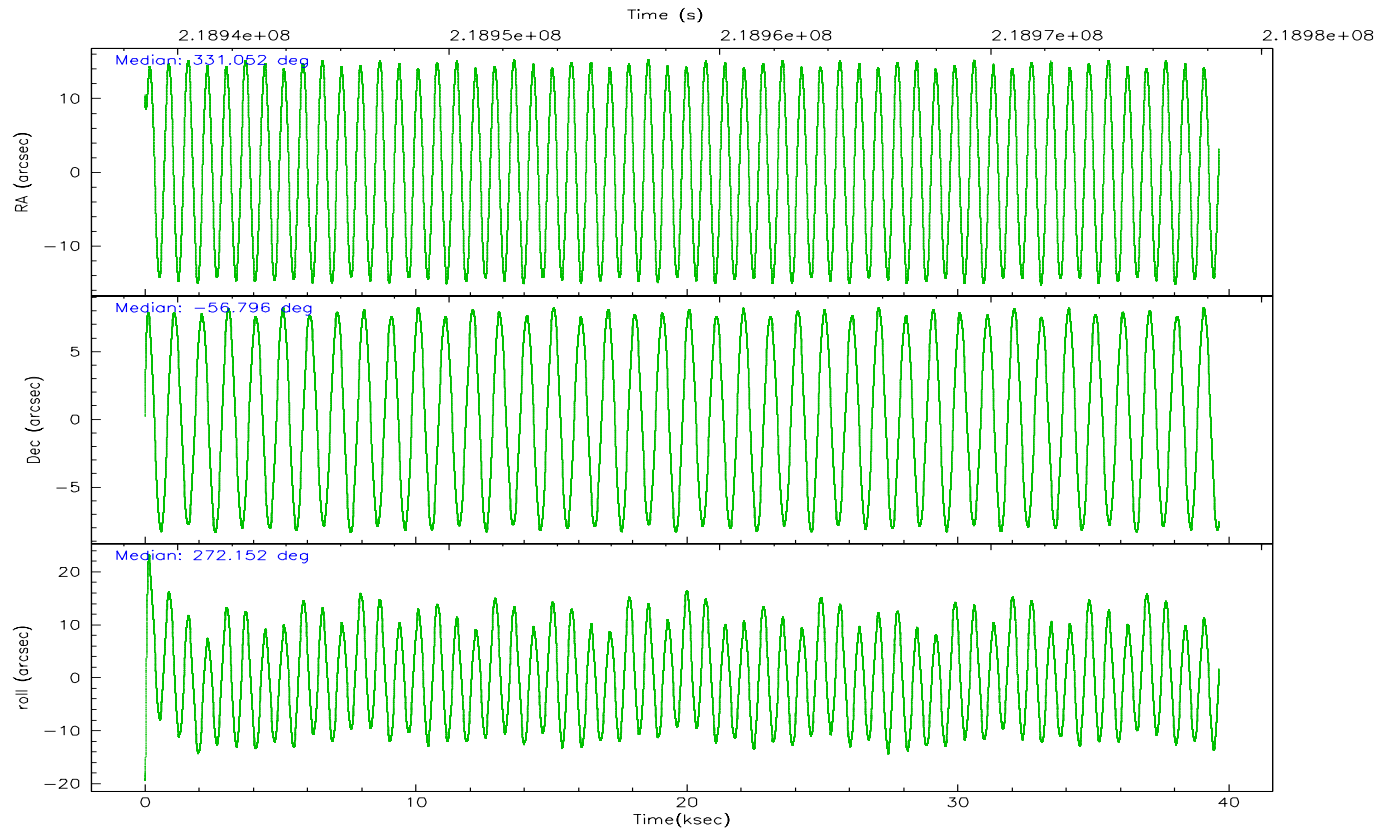
	ccd 2	ccd 3	ccd 5	ccd 6	ccd 7	ccd 8
grade 0 events	16439	15214	24054	14260	9502	28215
	5%	5%	5%	4%	2%	7%
grade 1 events	195	199	832	145	233	247
	0%	0%	0%	0%	0%	0%
grade 2 events	7452	6875	62851	7706	38977	18177
	2%	2%	13%	2%	9%	4%
grade 3 events	3365	3359	4495	3437	7854	9552
	1%	1%	0%	1%	1%	2%
grade 4 events	3414	3419	4316	3419	7602	8905
	1%	1%	0%	1%	1%	2%
grade 5 events	11890	13116	21778	13911	27040	18401
	3%	4%	4%	4%	6%	4%
grade 6 events	5949	6317	113527	7048	92864	21311
	1%	2%	24%	2%	22%	5%
grade 7 events	261292	243322	225148	251759	223176	276536
	84%	83%	49%	83%	54%	72%

2.2 Compared Parameters

Parameter	Planned	Actual	Parameter	Planned	Actual
Instrument	ACIS	ACIS	Obspar format version number	6	6
Detector	ACIS-235678	ACIS-235678	Obspar file type	PREDICTED	ACTUAL
Grating	NONE	NONE	Obspar update status	NONE	UPDATED
Data mode	VFAINT	VFAINT	On-chip summing requested	N	N
Observation mode	POINTING	POINTING	Subarray requested	NONE	NONE
Pointing RA	331.024726	331.0517315337617	Alternating exposures requested	N	N
Pointing Dec	-56.772968	-56.79580938037449	Primary exposure time	0.000000	3.2
Pointing Roll	271.975376	272.1545789421501			
SIM focus pos (mm)	-0.684267	-0.6828225247311905			
SIM defocus (mm)	0	0.001444936568705701			
SIM translation stage pos (mm)	-190.132523	-190.1400660498719			
SIM translation stage offset (mm)	0	0.00754346686406393			
Observation start time	218938934.184000	218937817.01003			
Observation start date	2004-12-09T00:21:10	2004-12-09T00:03:37			
Observation end time	218978434.184000	218979291.58689			
Observation end date	2004-12-09T11:19:30	2004-12-09T11:34:51			
Read mode	TIMED	TIMED			

2.3 Aspect



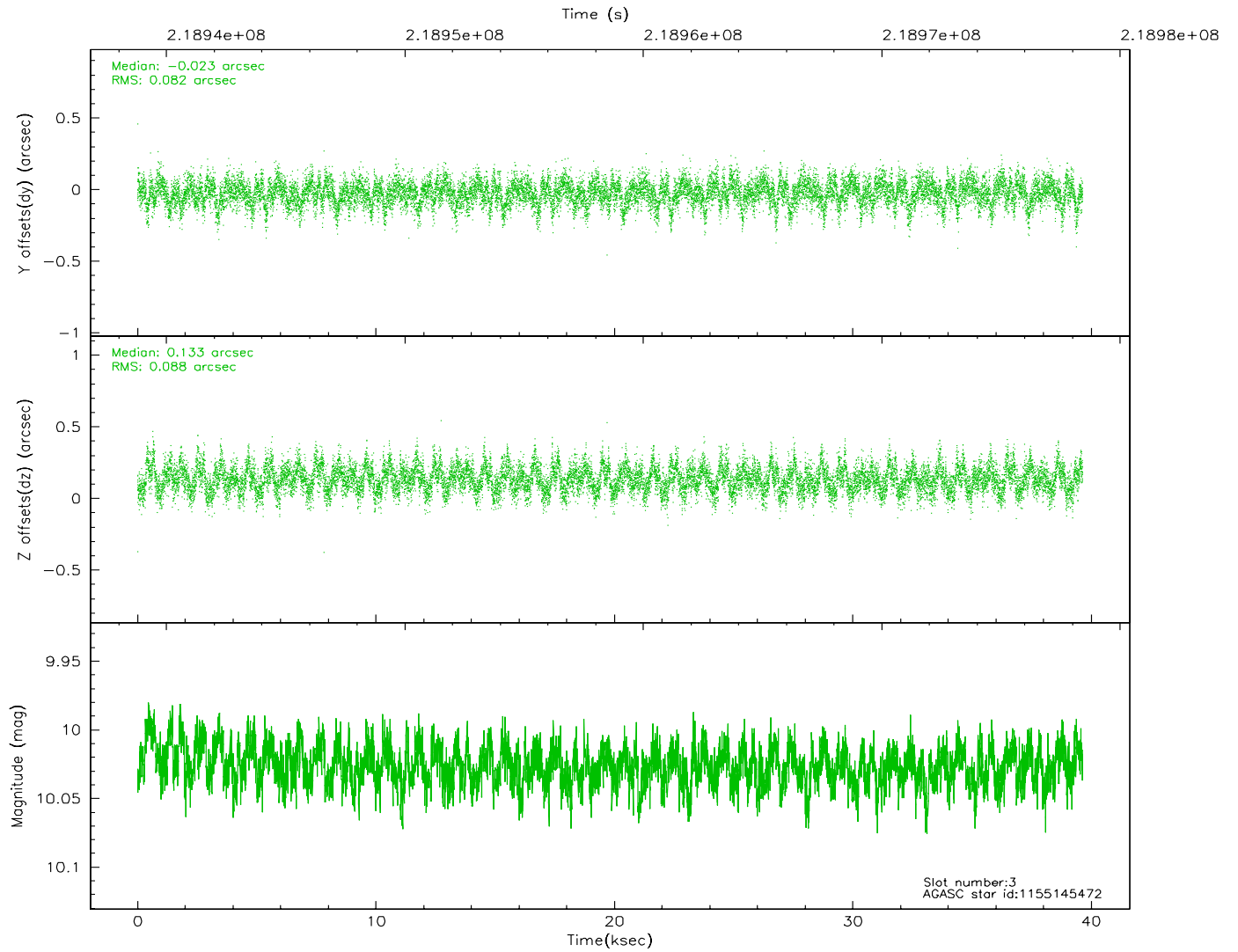
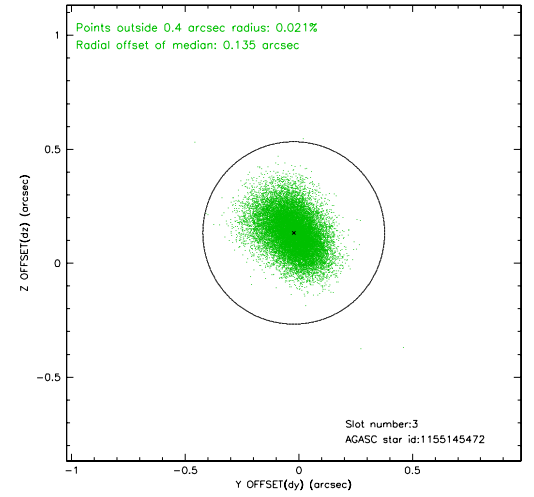
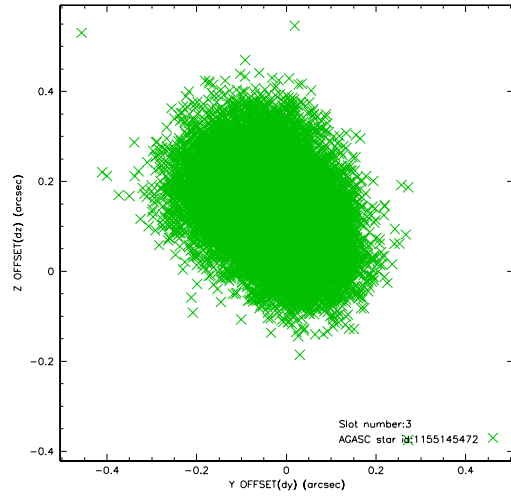


Slot Statistics

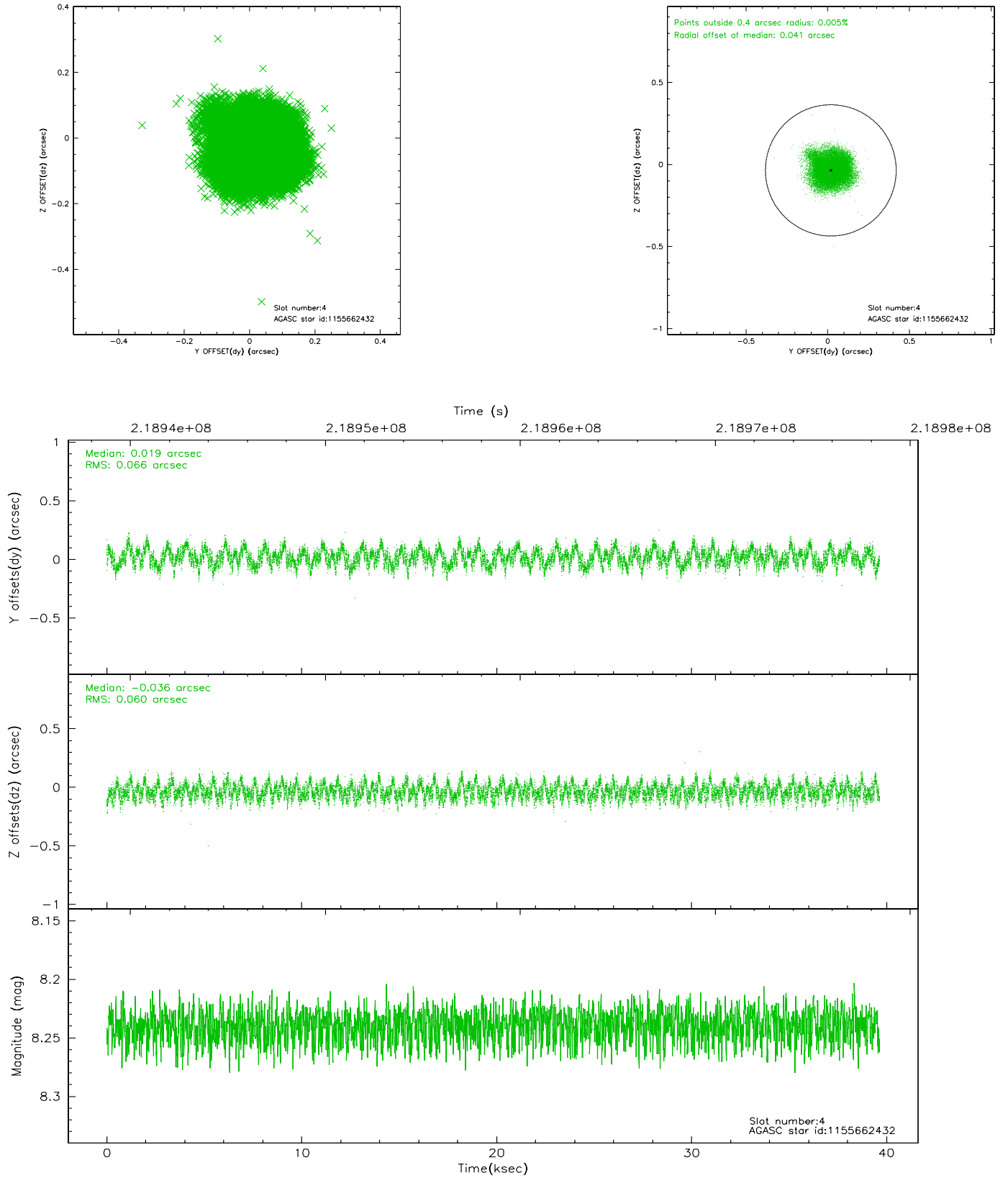
slot	status	id	mag	n_pts	med_dy	med_dz	dr1	dr2	ra	dec	mean_y	mean_z
0	FID	ACIS-S-2	7.10	9669	-0.020	-0.004	0.018	0.031	0.000000	0.000000	-759.84	-1732.51
1	FID	ACIS-S-4	7.20	9671	0.029	0.005	0.012	0.026	0.000000	0.000000	2153.46	175.99
2	FID	ACIS-S-6	7.34	9671	-0.035	0.005	0.012	0.021	0.000000	0.000000	402.13	813.39
3	GUIDE	1155145472	10.03	19330	-0.023	0.133	0.128	0.211	330.914509	-56.156792	-2224.22	-144.16
4	GUIDE	1155662432	8.24	19336	0.019	-0.036	0.098	0.150	331.914502	-56.851094	352.95	1740.47
5	GUIDE	1155662832	9.69	19316	0.193	-0.051	0.156	0.241	330.711099	-57.263815	1746.79	-670.83
6	GUIDE	1155668552	8.01	19334	-0.074	-0.173	0.072	0.115	331.144851	-56.299715	-1693.93	297.92
7	GUIDE	1155145264	9.72	19324	-0.113	0.114	0.131	0.211	332.166474	-56.106650	-2299.31	2373.36

2.4 Star Slots

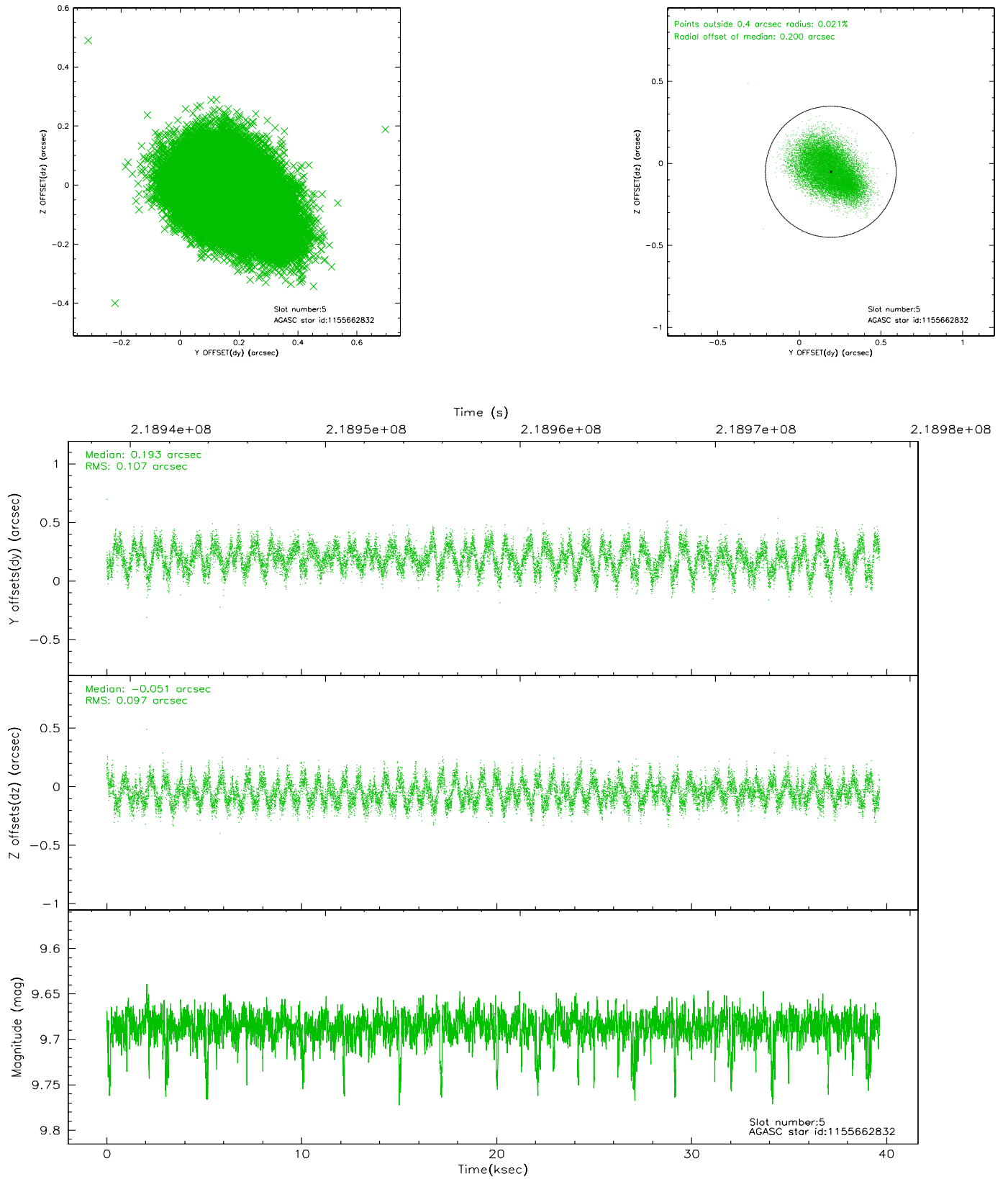
2.4.1 Slot 3



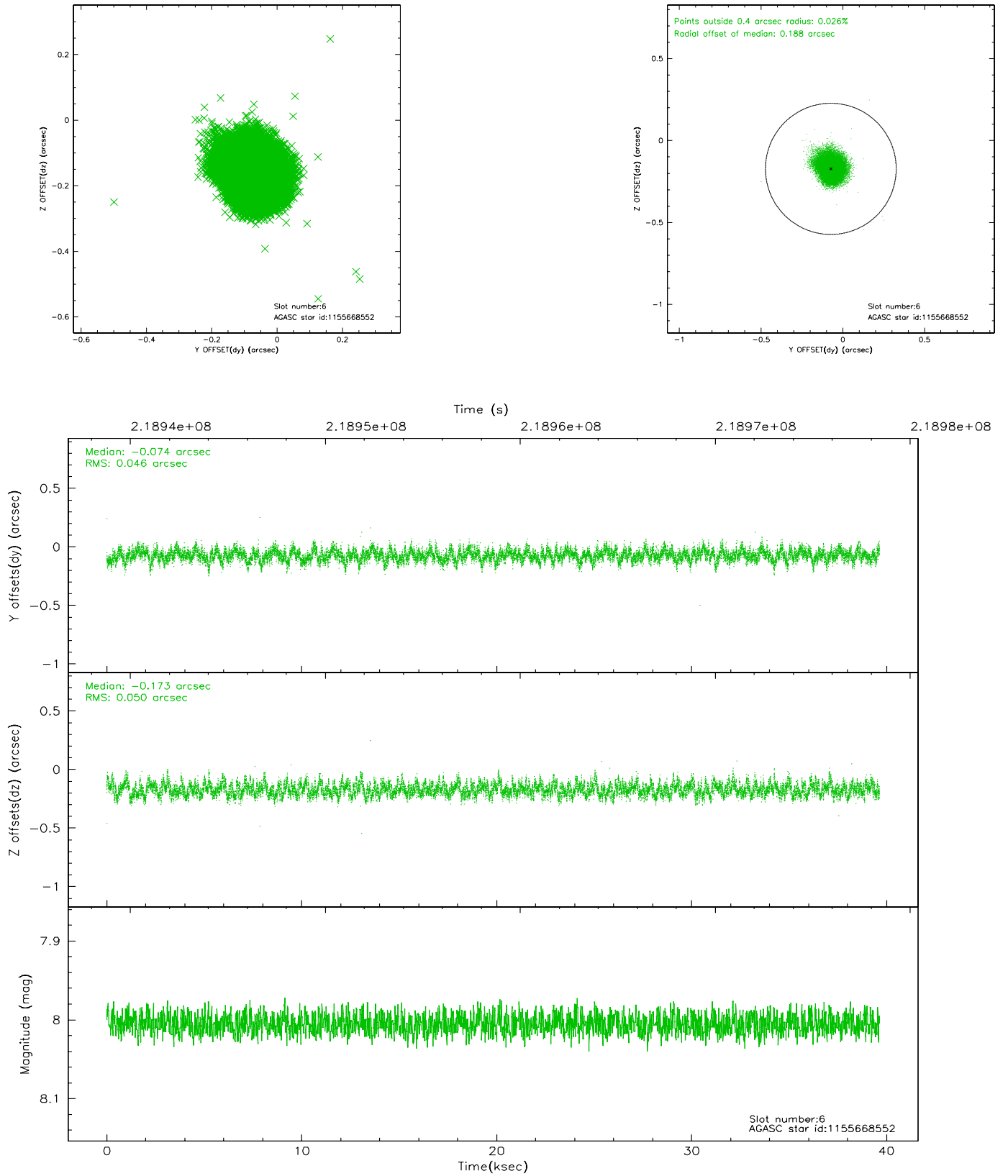
2.4.2 Slot 4



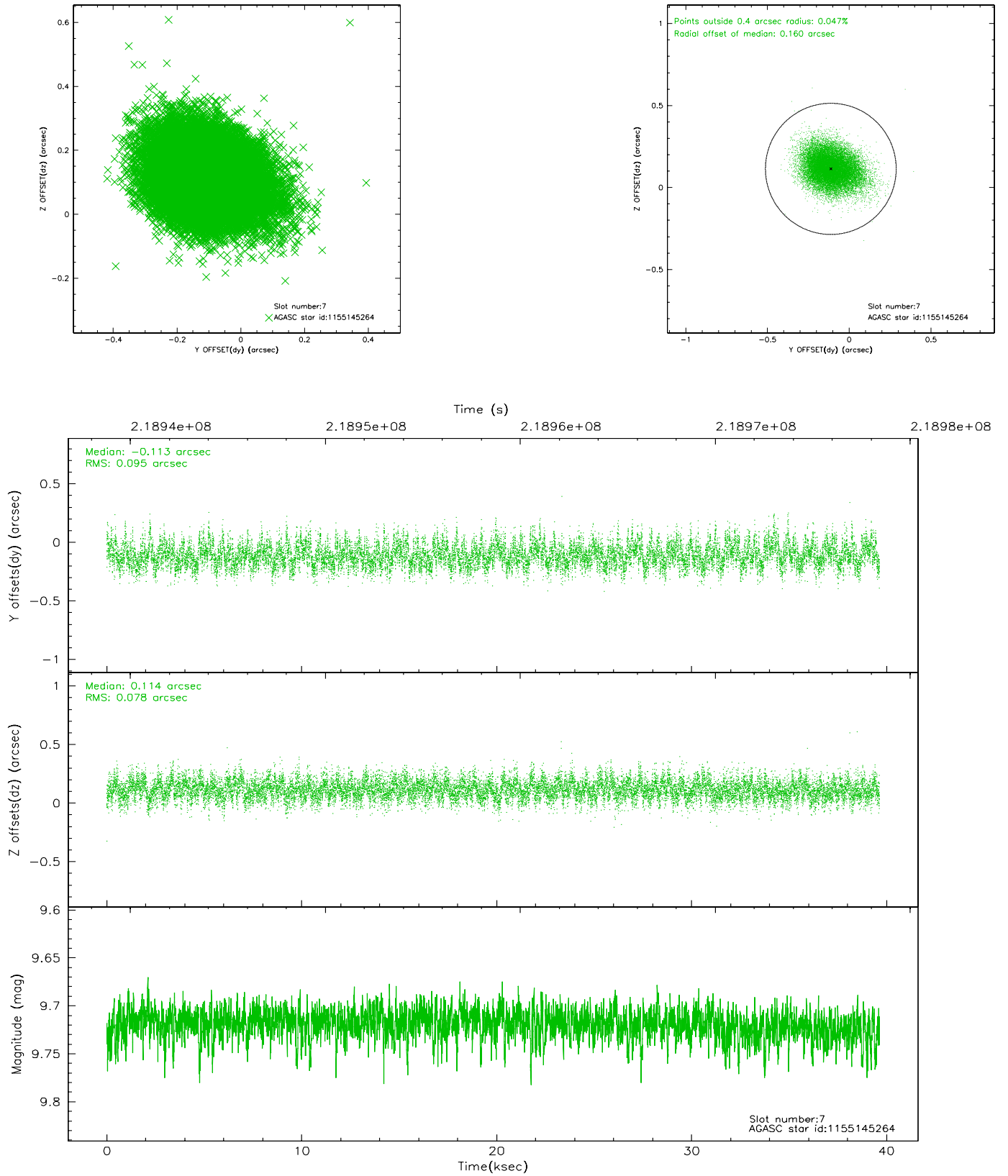
2.4.3 Slot 5



2.4.4 Slot 6

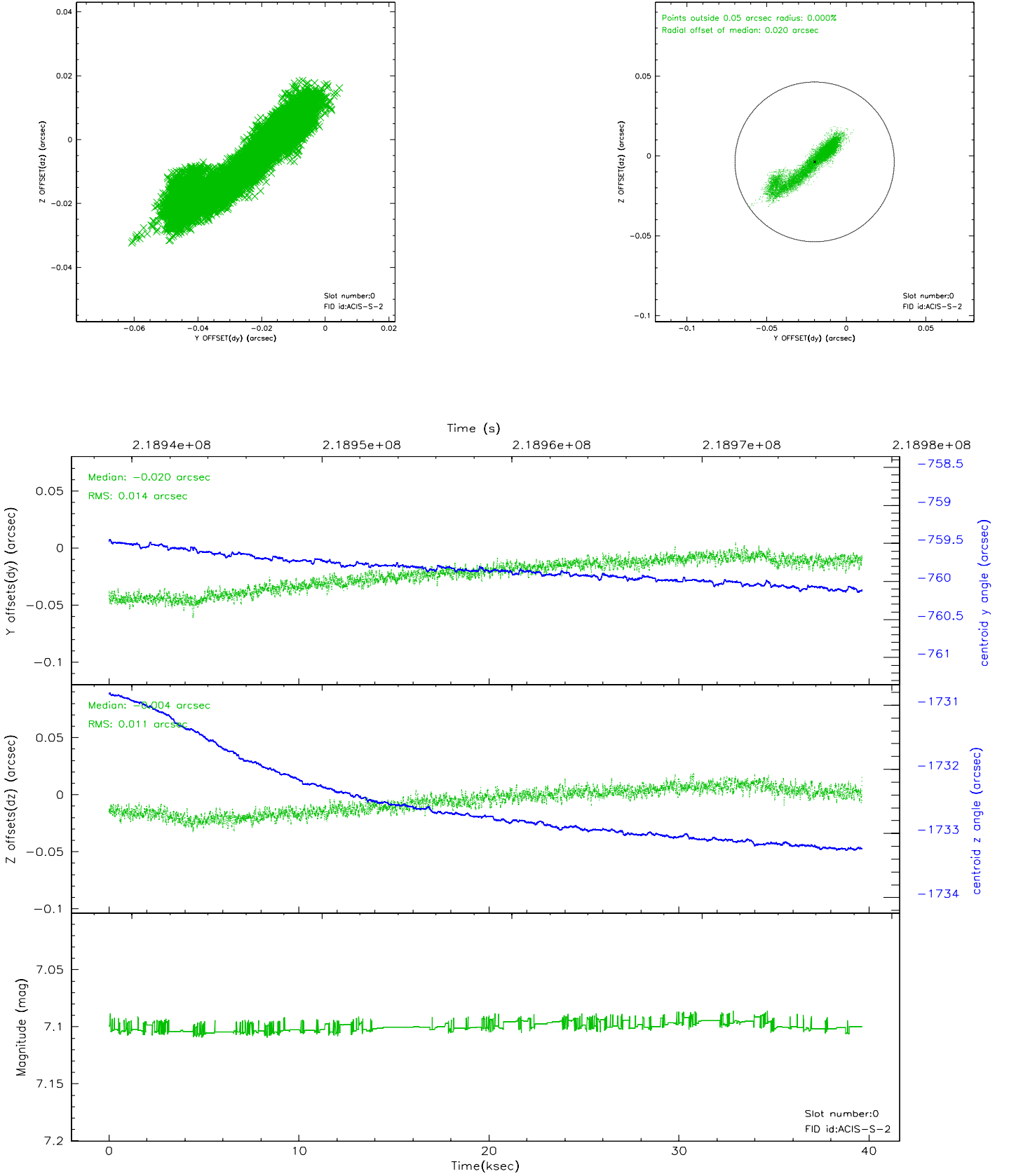


2.4.5 Slot 7

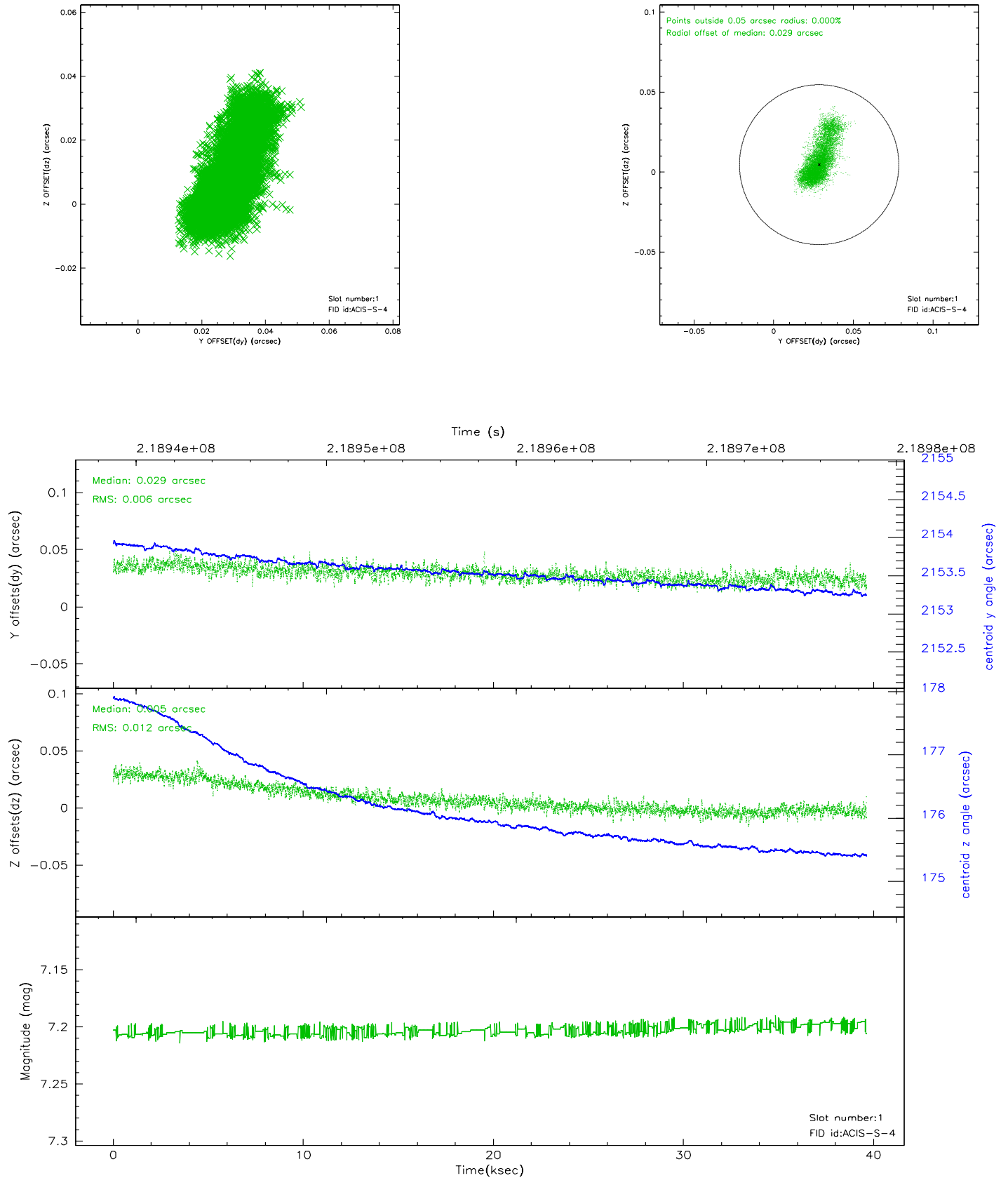


2.5 FID Slots

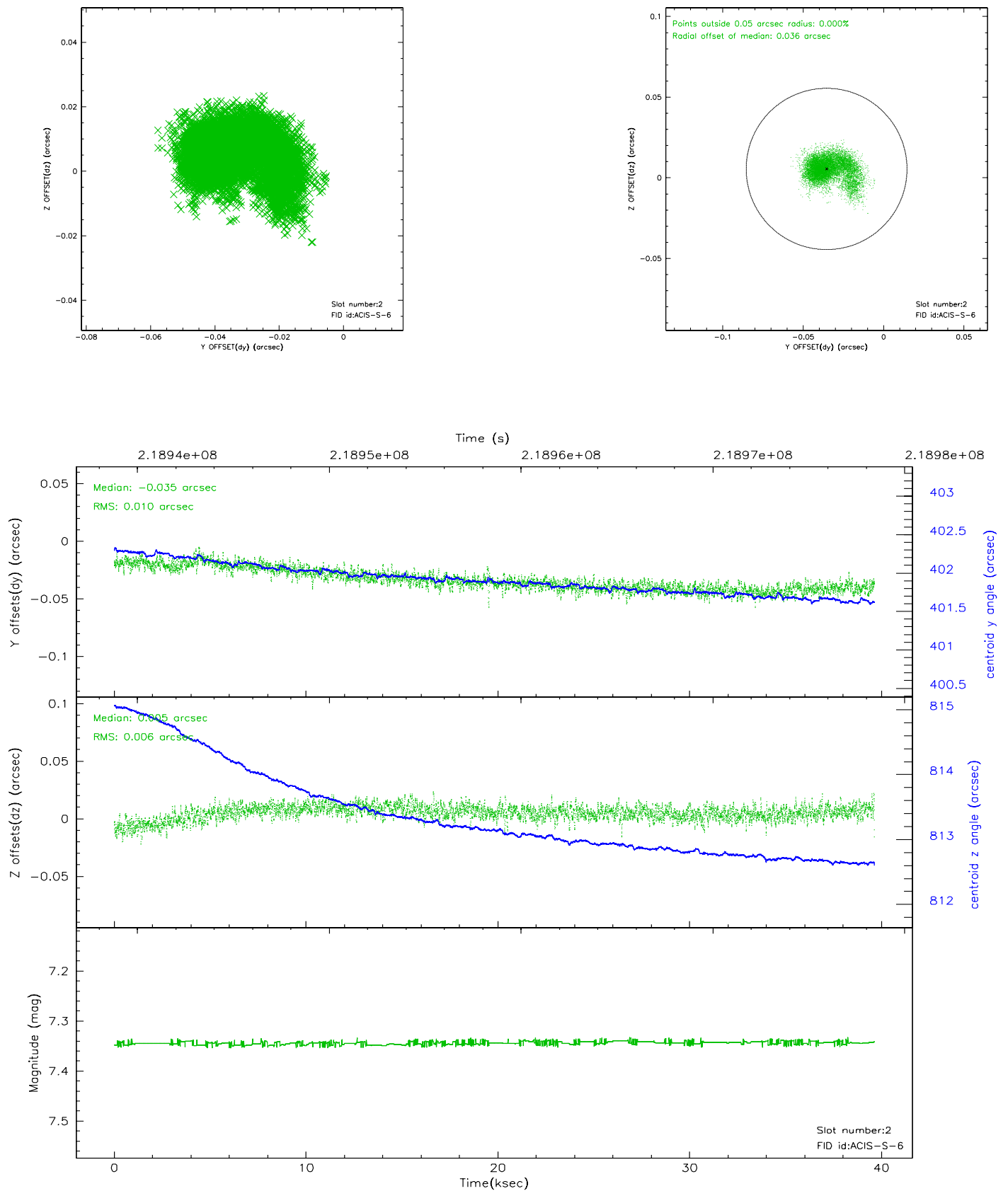
2.5.1 Slot 0



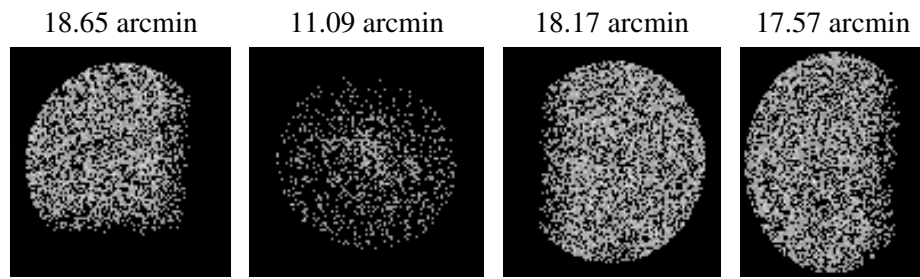
2.5.2 Slot 1



2.5.3 Slot 2



3 Point Sources



A Summary

A.1 Status

V&V Scientist	Beth Sundheim
V&V Date (YYYY-MM-DD)	2006.04.10
V&V Edition	1
V&V Disposition and Status	OK
V&V Charge Time	39.64479

A.2 Comments