

# V&V Reference Report

## L2 ASCDS Version : 7.6.7

Observation 4484 - L2 Version 002  
Chandra X-Ray Center

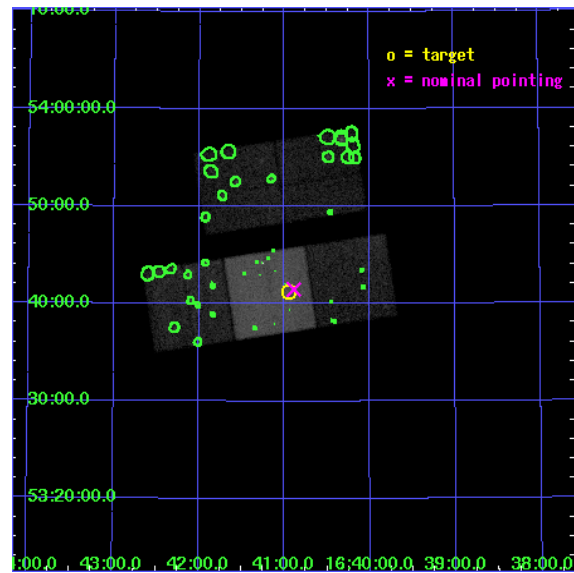
L2 Processing Date: Mar 4 2006

## Contents

<b>1</b>	<b>Front</b>	<b>2</b>
<b>2</b>	<b>OBI</b>	<b>3</b>
2.1	OBI . . . . .	3
2.1.1	Images . . . . .	3
2.1.2	Bias . . . . .	3
2.1.3	Parameters . . . . .	4
2.1.4	Events . . . . .	4
2.2	Compared Parameters . . . . .	5
2.3	Aspect . . . . .	6
2.4	Star Slots . . . . .	9
2.4.1	Slot 3 . . . . .	9
2.4.2	Slot 4 . . . . .	10
2.4.3	Slot 5 . . . . .	11
2.4.4	Slot 6 . . . . .	12
2.4.5	Slot 7 . . . . .	13
2.5	FID Slots . . . . .	14
2.5.1	Slot 0 . . . . .	14
2.5.2	Slot 1 . . . . .	15
2.5.3	Slot 2 . . . . .	16
<b>3</b>	<b>Point Sources</b>	<b>17</b>
<b>A</b>	<b>Summary</b>	<b>18</b>
A.1	Status . . . . .	18
A.2	Comments . . . . .	18

# 1 Front

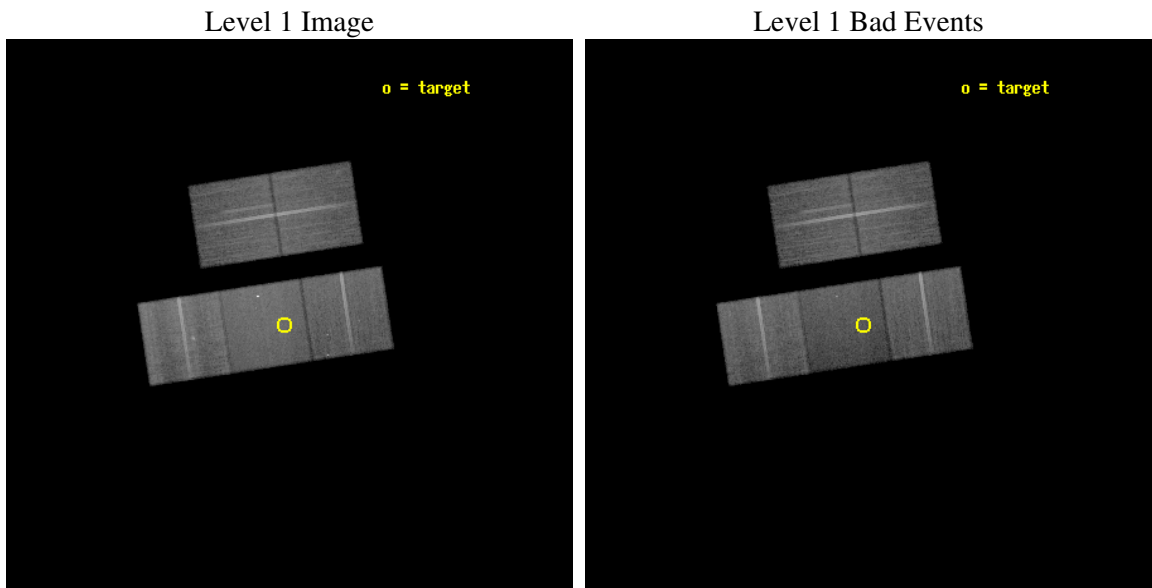
seq_num	200253
obs_id	4484
title	Coronal X-Rays from single, Cool, Magnetic White Dwarfs
observer	Prof. Virginia Trimble
object	GD356
dtcycle	0
cycle	P
ra_targ	250.2375
dec_targ	53.688333
ra_nom	250.22208921561
dec_nom	53.691414118212
roll_nom	171.42567966164
revision	2
ontime	32239.999938011
livetime	31818.760604078
ontime2	32239.969521672
ontime3	32233.717987508
ontime6	32239.999938011
ontime7	32239.999938011
ontime8	32233.718037307
l2events	171031



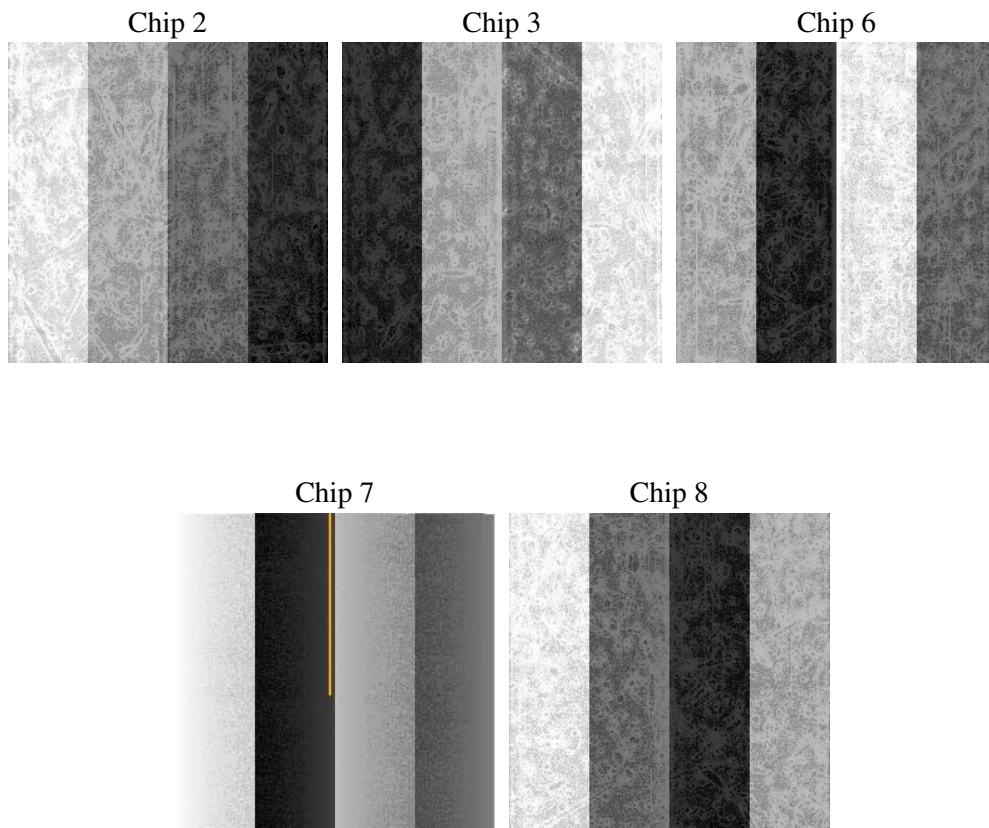
## 2 OBI

### 2.1 OBI

#### 2.1.1 Images



#### 2.1.2 Bias



### 2.1.3 Parameters

obi_num	1
ascdsver	7.6.7
caldbver	3.2.1
date	2006-03-04T05:55:28
revision	2

sched_exp_time	32200.000000
ontime	32242.419929683
ontime2	32242.419929683
ontime3	32236.13797918
ontime6	32242.419929683
ontime7	32242.419929683
ontime8	32236.137999088
l1events	1082012

### 2.1.4 Events

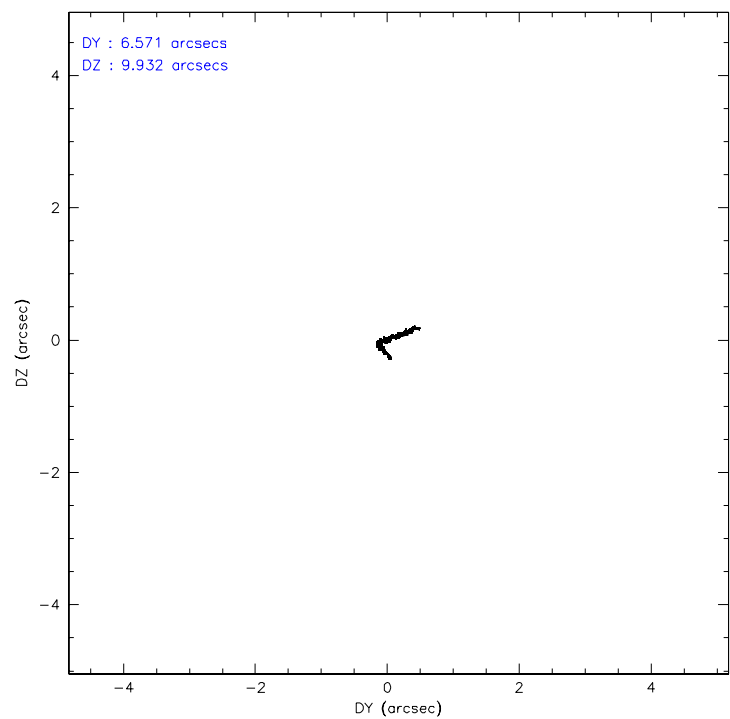
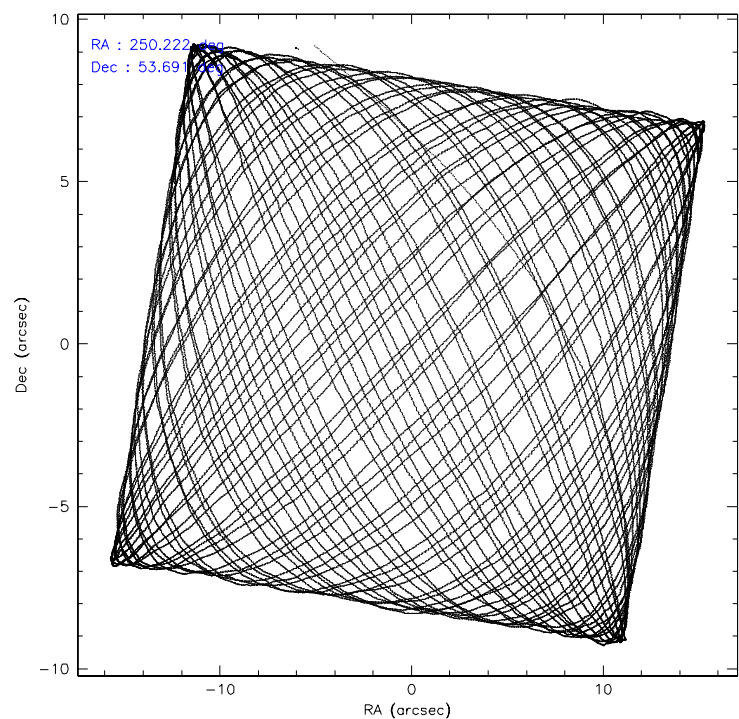
	ccd 2	ccd 3	ccd 6	ccd 7	ccd 8
level 1 events	200591	194656	201132	228230	257403
rejected events	180883	176257	178464	129983	196906
rejected %	90%	90%	88%	56%	76%

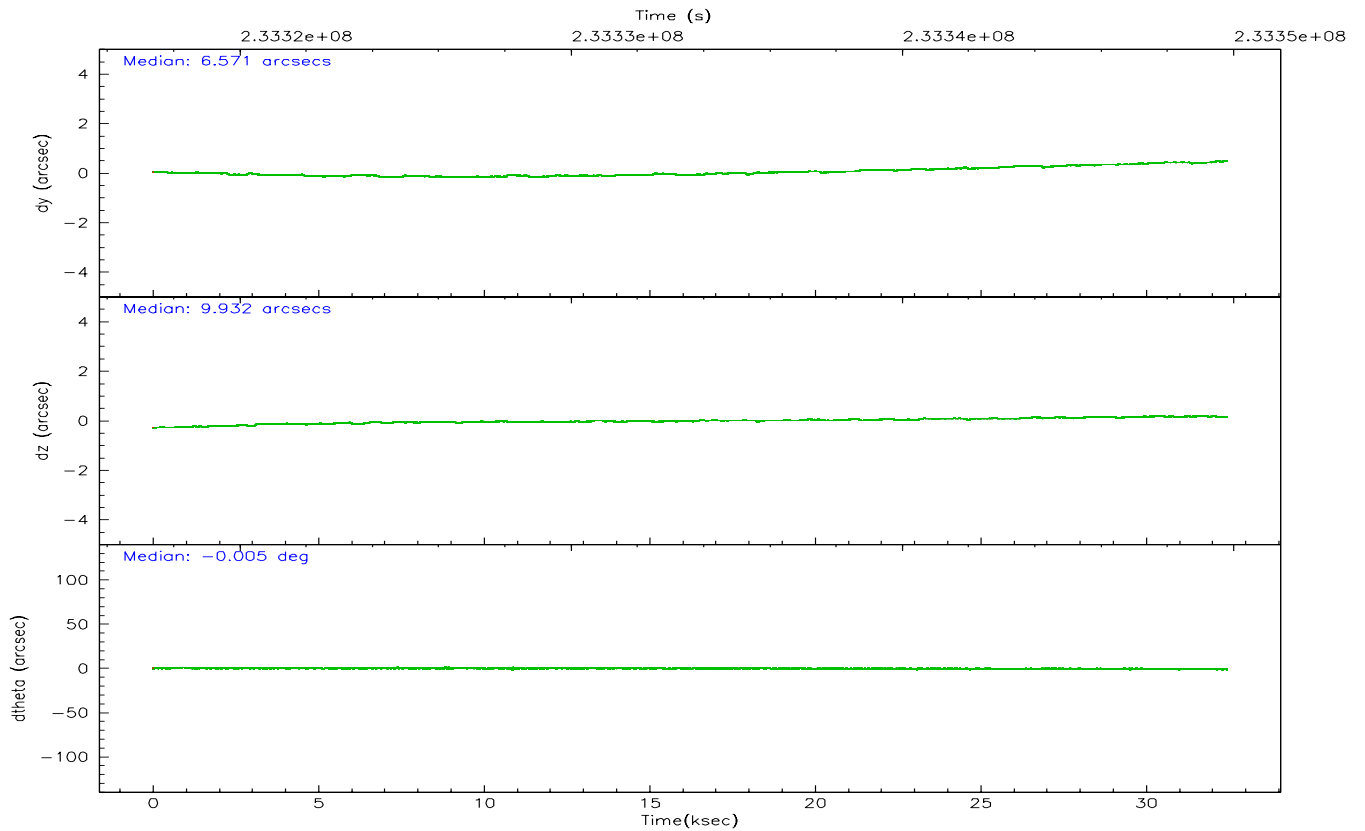
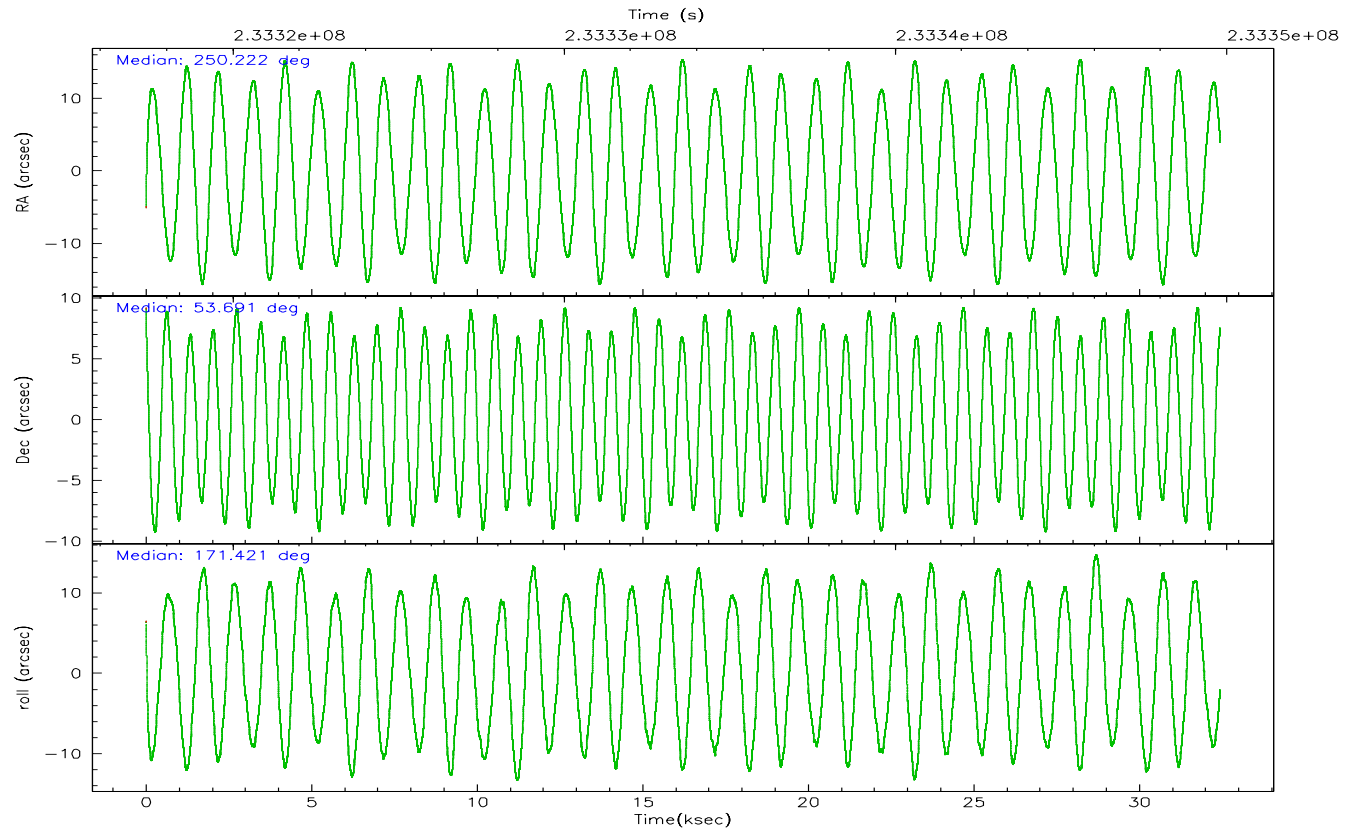
	ccd 2	ccd 3	ccd 6	ccd 7	ccd 8
grade 0 events	7241	6427	8689	7117	18582
	3%	3%	4%	3%	7%
grade 1 events	103	107	92	183	189
	0%	0%	0%	0%	0%
grade 2 events	4469	3930	4721	24551	13553
	2%	2%	2%	10%	5%
grade 3 events	2225	2122	2403	5932	6541
	1%	1%	1%	2%	2%
grade 4 events	2244	2180	2304	5849	5969
	1%	1%	1%	2%	2%
grade 5 events	6620	7769	8300	17541	11731
	3%	3%	4%	7%	4%
grade 6 events	3529	3742	4555	54807	15853
	1%	1%	2%	24%	6%
grade 7 events	174160	168379	170068	112250	184985
	86%	86%	84%	49%	71%

## 2.2 Compared Parameters

Parameter	Planned	Actual	Parameter	Planned	Actual
Instrument	ACIS	ACIS	Obspar format version number	6	6
Detector	ACIS-23678	ACIS-23678	Obspar file type	PREDICTED	ACTUAL
Grating	NONE	NONE	Obspar update status	NONE	UPDATED
Data mode	VFAINT	VFAINT	On-chip summing requested	N	N
Observation mode	POINTING	POINTING	Subarray requested	NONE	NONE
Pointing RA	250.264628	250.2220892156054	Alternating exposures requested	N	N
Pointing Dec	53.701705	53.69141411821158	Primary exposure time	0.000000	3.1
Pointing Roll	171.234767	171.4256796616449			
SIM focus pos (mm)	-0.684267	-0.6828225247311905			
SIM defocus (mm)	0	0.001444936568705701			
SIM translation stage pos (mm)	-190.132523	-190.1400660498719			
SIM translation stage offset (mm)	0	0.00754346686406393			
Observation start time	233317616.184000	233316661.16128			
Observation start date	2005-05-24T10:25:52	2005-05-24T10:11:01			
Observation end time	233349816.184000	233350381.10032			
Observation end date	2005-05-24T19:22:32	2005-05-24T19:33:01			
Read mode	TIMED	TIMED			

## 2.3 Aspect



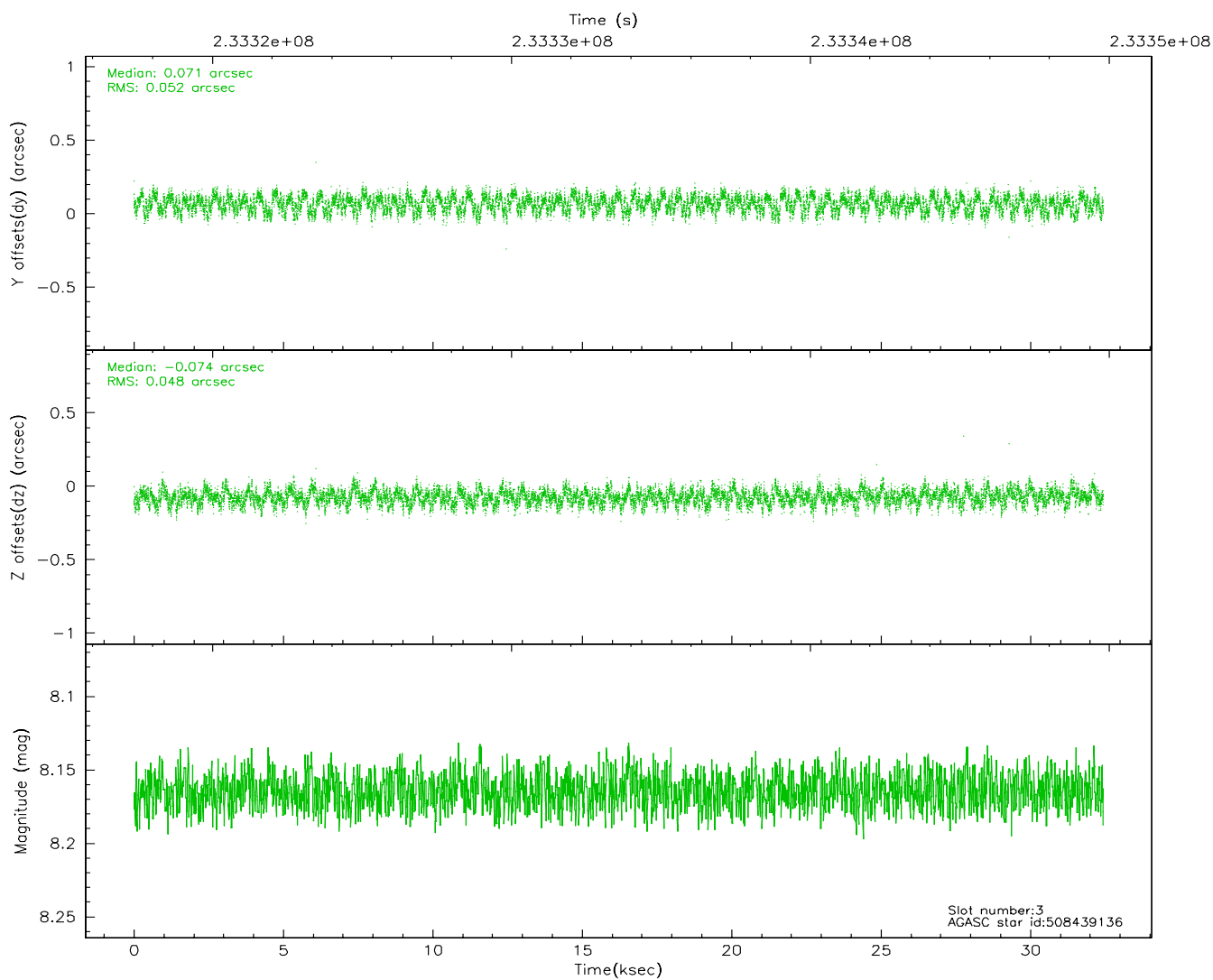
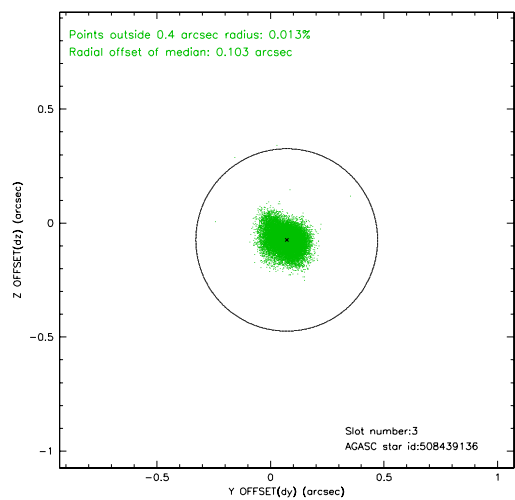
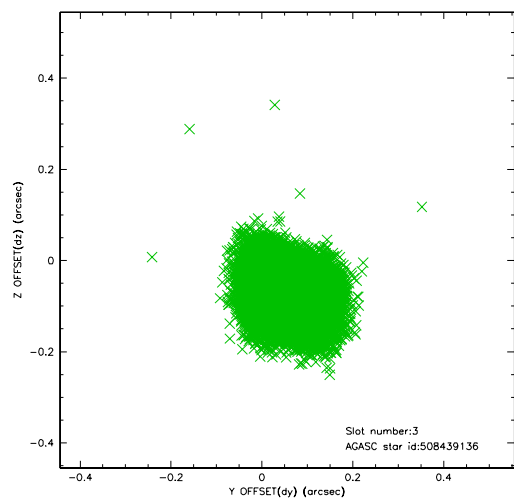


### Slot Statistics

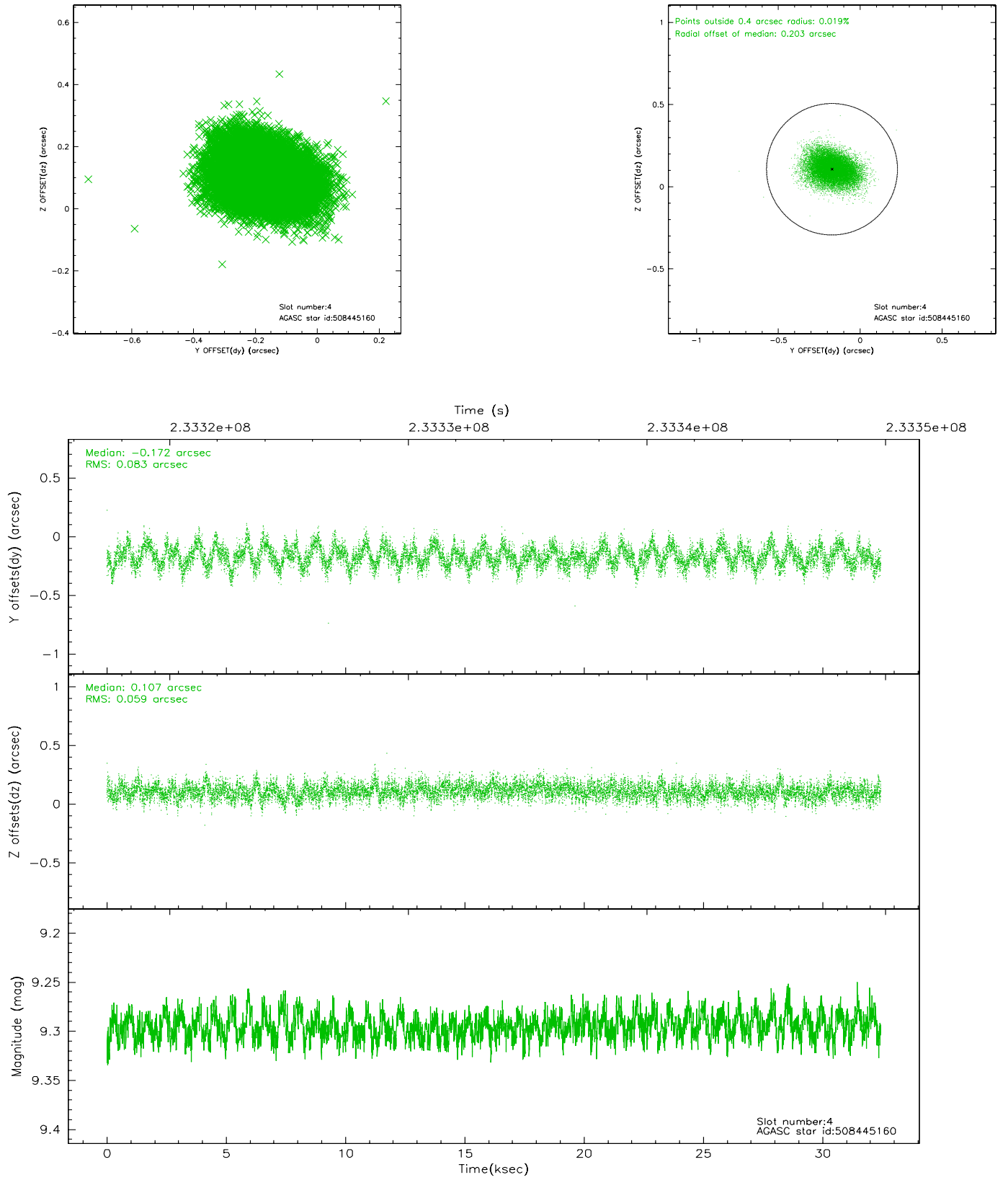
slot	status	id	mag	n_pts	med_dy	med_dz	dr1	dr2	ra	dec	mean_y	mean_z
0	FID	ACIS-S-2	7.10	7913	-0.052	-0.006	0.007	0.011	0.000000	0.000000	-759.39	-1731.19
1	FID	ACIS-S-4	7.20	7912	0.062	0.027	0.005	0.009	0.000000	0.000000	2153.94	177.31
2	FID	ACIS-S-5	7.23	7913	-0.041	-0.012	0.007	0.012	0.000000	0.000000	-1812.18	170.94
3	GUIDE	508439136	8.16	15826	0.071	-0.074	0.076	0.119	250.435056	53.072595	-709.28	2181.75
4	GUIDE	508445160	9.29	15816	-0.172	0.107	0.108	0.178	249.450875	54.079473	1907.44	-1091.37
5	GUIDE	508446832	9.05	15814	-0.030	0.021	0.113	0.175	249.190096	53.496641	2164.74	1063.36
6	GUIDE	508448008	8.98	15818	0.062	-0.069	0.076	0.123	250.573060	53.621979	-693.93	182.04
7	GUIDE	508448144	9.32	15811	0.075	0.017	0.091	0.146	250.663719	53.585278	-906.04	281.92

## 2.4 Star Slots

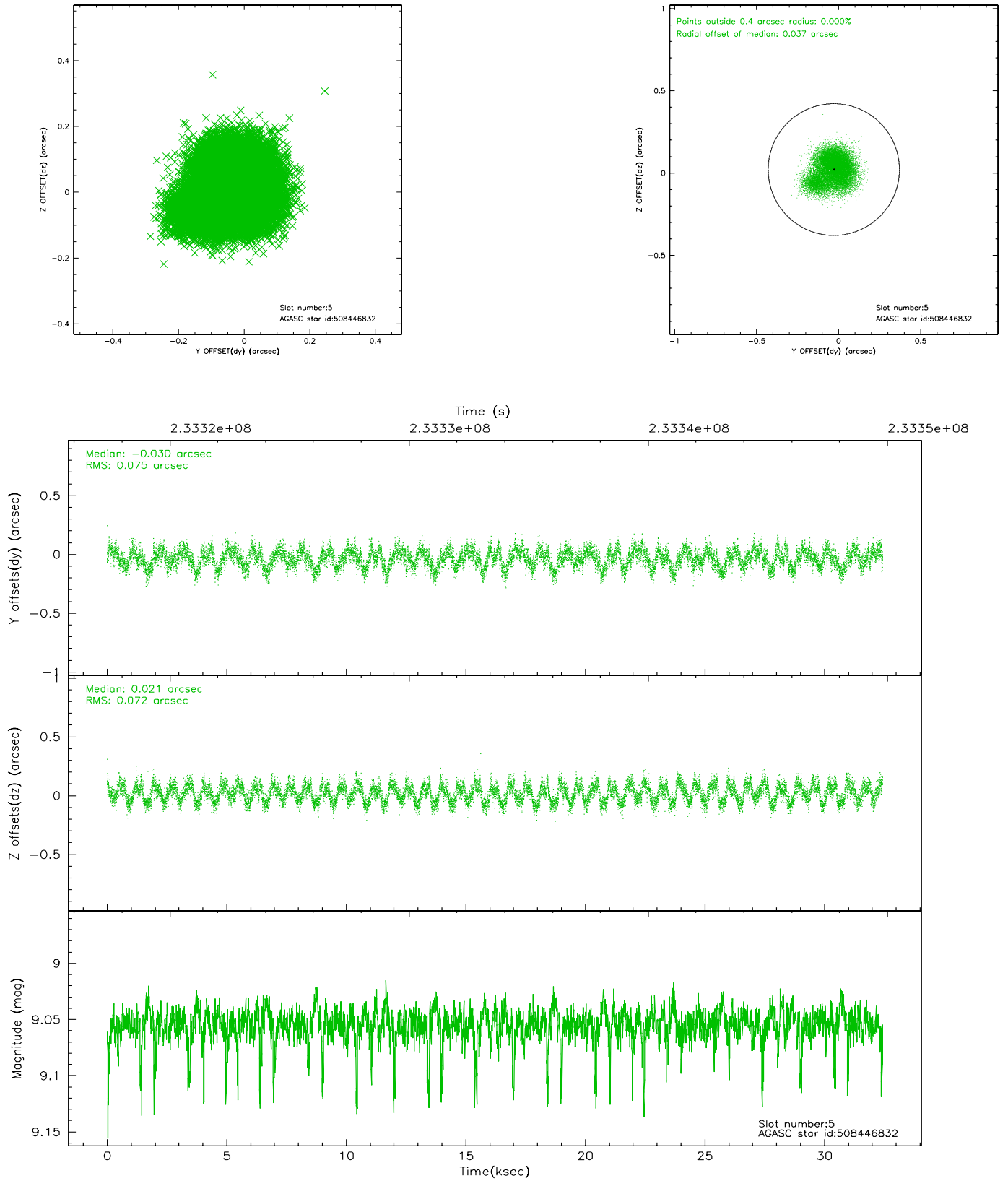
### 2.4.1 Slot 3



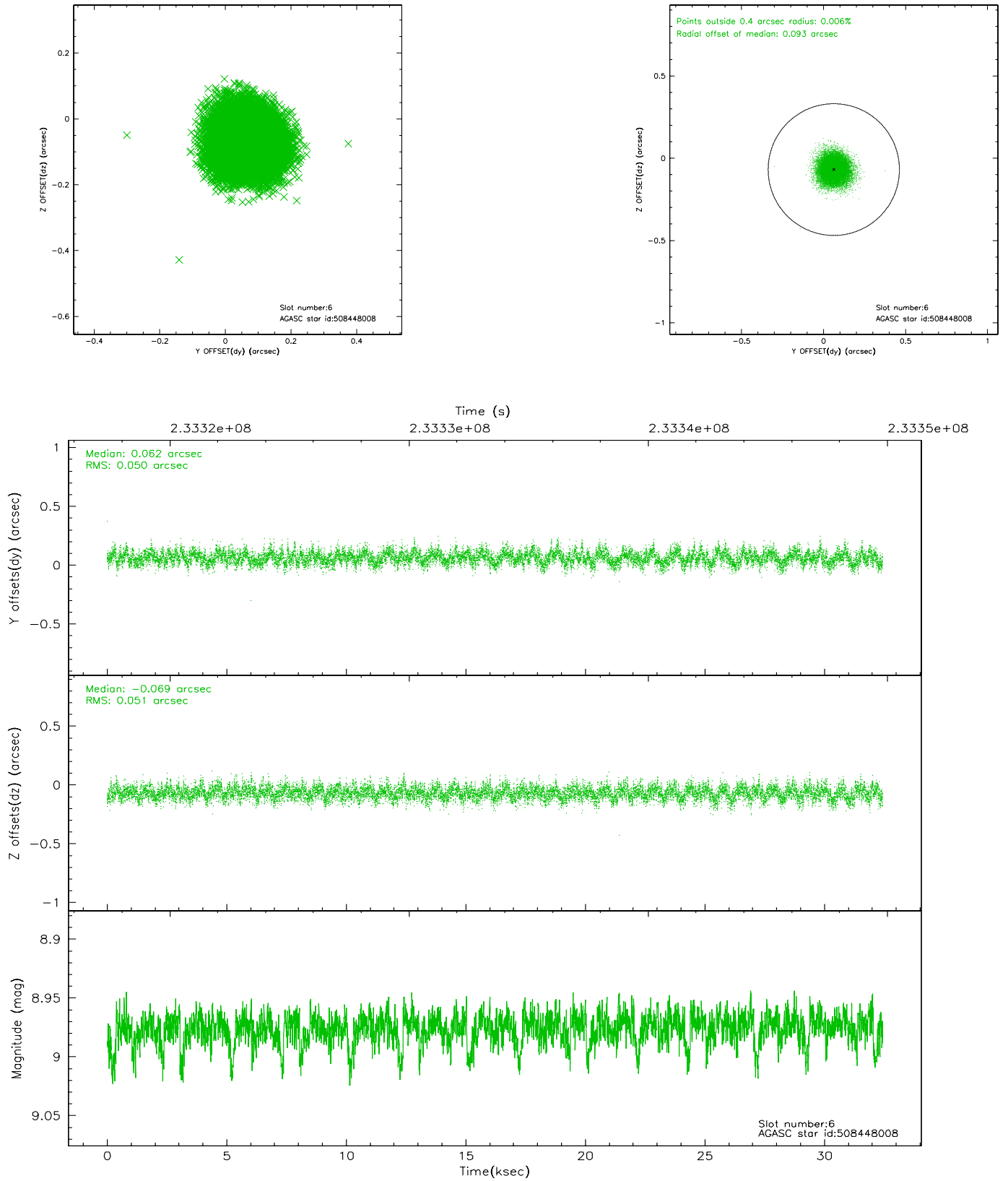
## 2.4.2 Slot 4



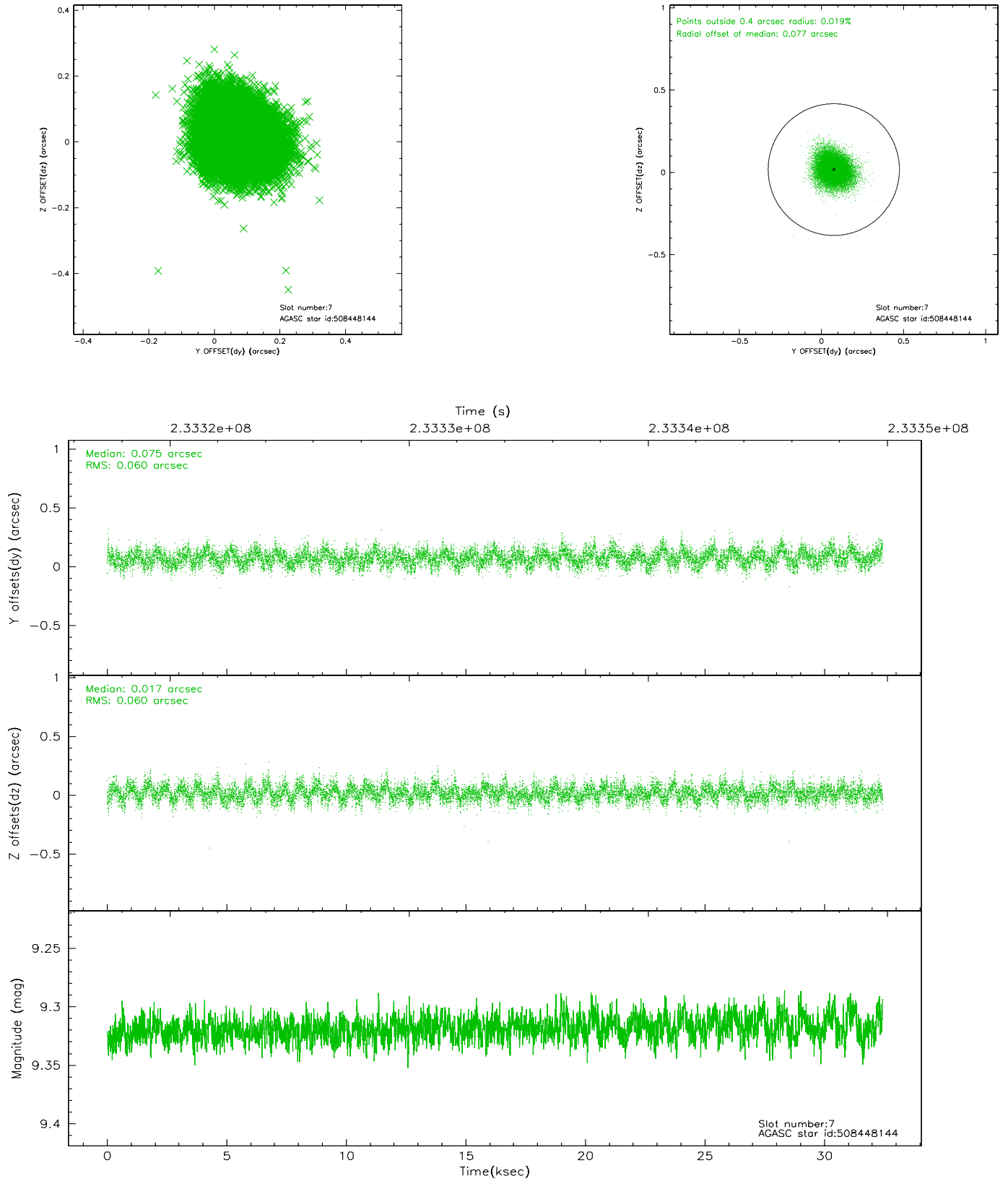
### 2.4.3 Slot 5



## 2.4.4 Slot 6

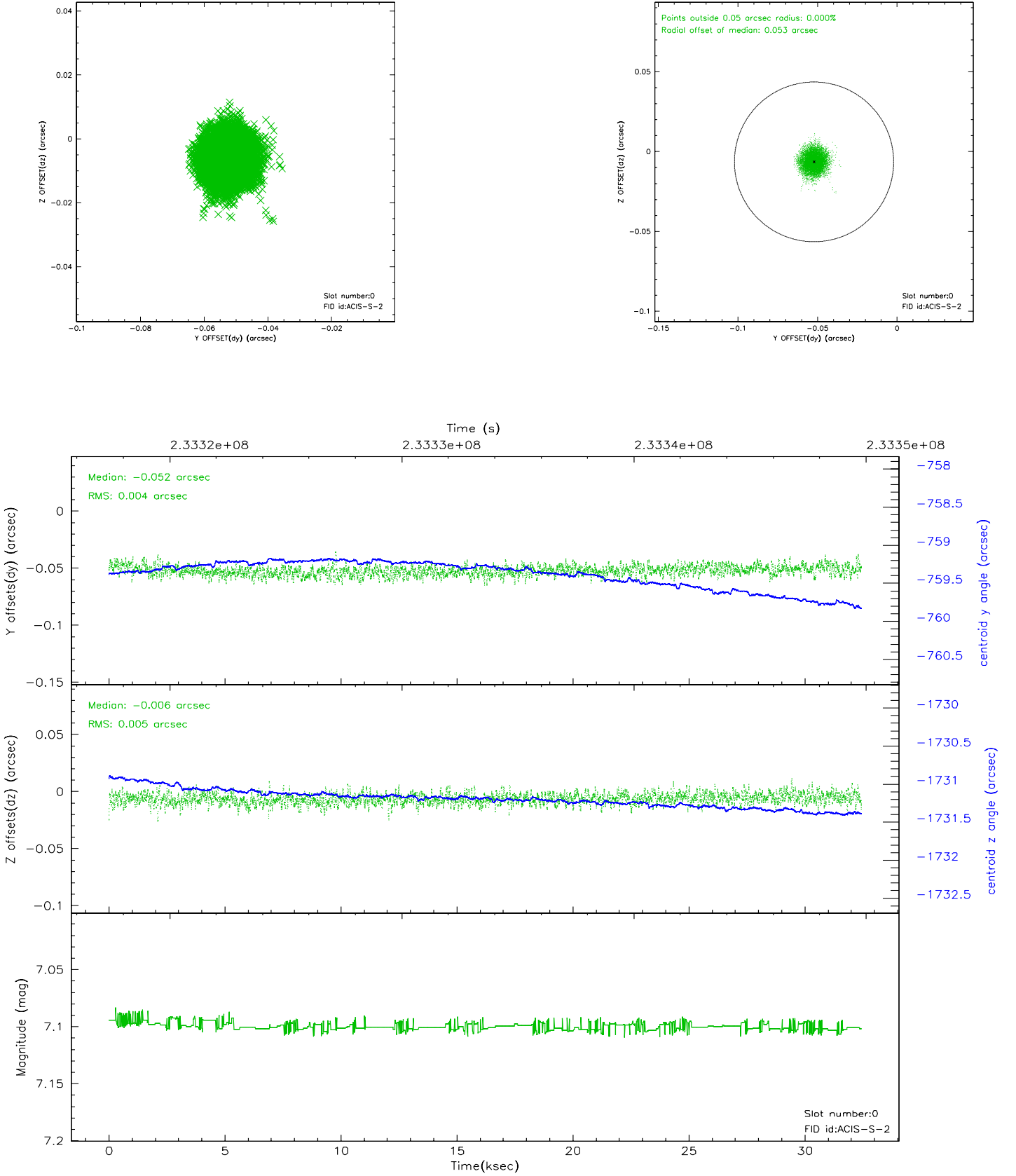


## 2.4.5 Slot 7

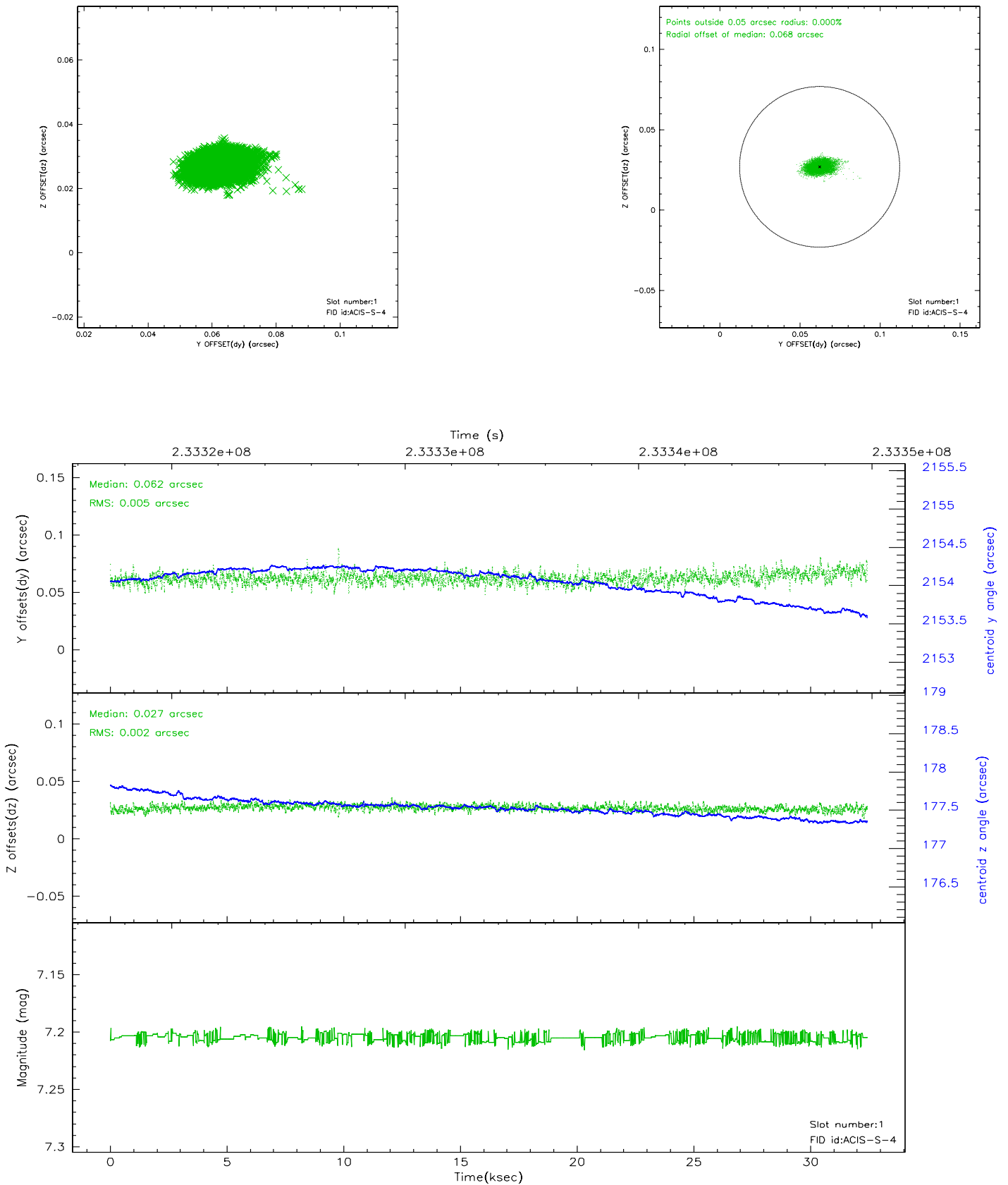


## 2.5 FID Slots

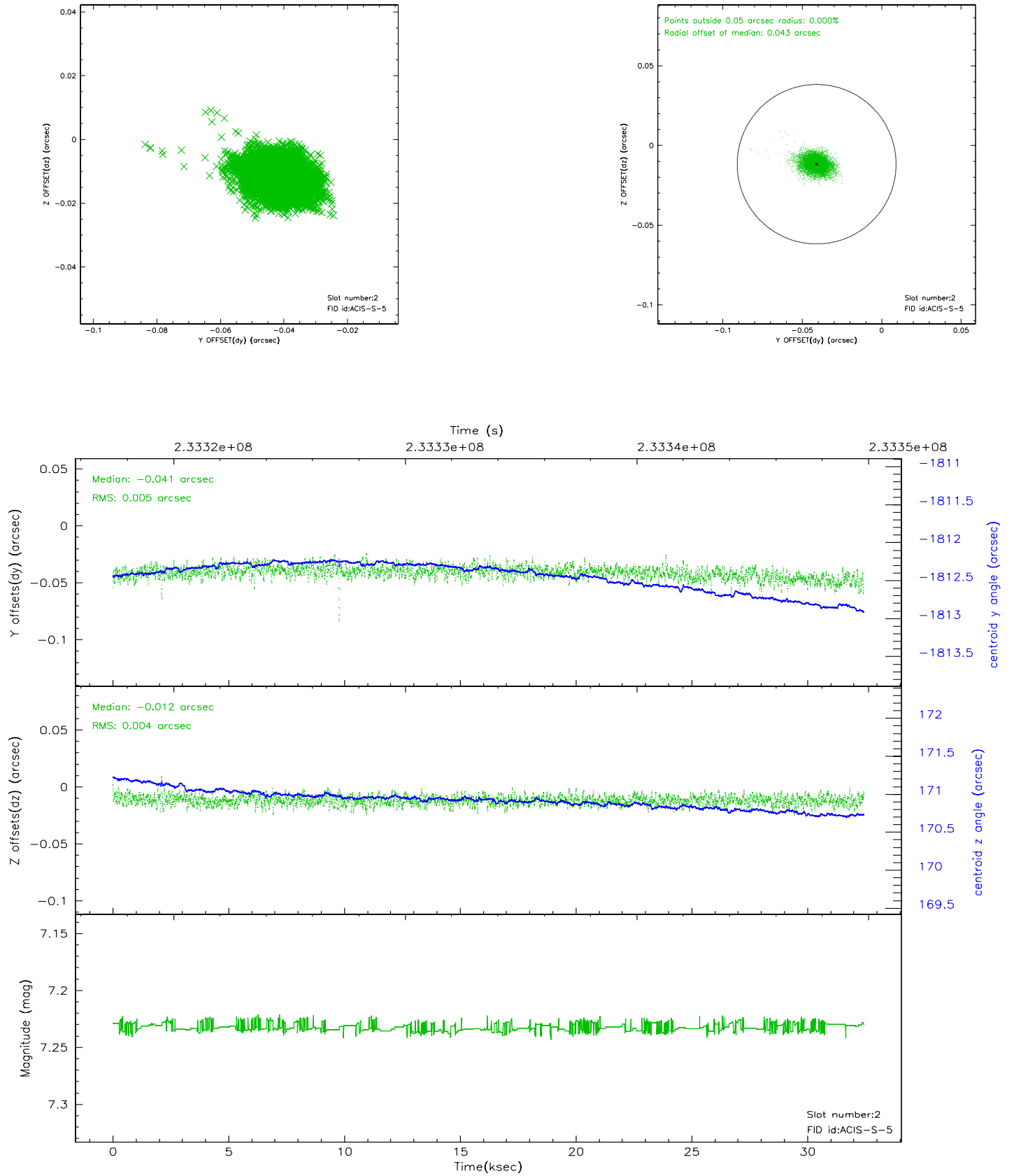
### 2.5.1 Slot 0



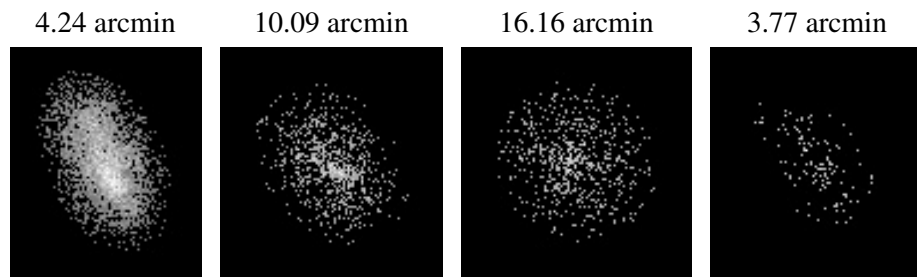
## 2.5.2 Slot 1



### 2.5.3 Slot 2



### 3 Point Sources



## A Summary

### A.1 Status

V&V Scientist	Beth Sundheim
V&V Date (YYYY-MM-DD)	2006.03.05
V&V Edition	1
V&V Disposition and Status	OK
V&V Charge Time	32.23999

### A.2 Comments