

V&V Reference Report

L2 ASCDS Version : 7.6.8

Observation 4476 - L2 Version 001
Chandra X-Ray Center

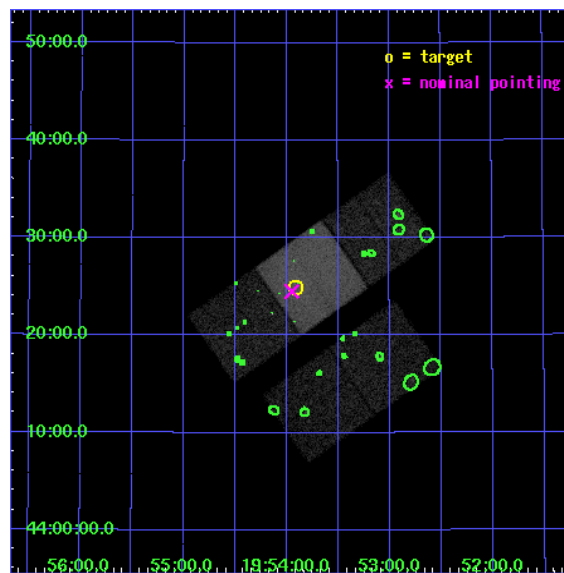
L2 Processing Date : Jun 23 2006

Contents

1	Front	2
2	OBI	3
2.1	OBI	3
2.1.1	Images	3
2.1.2	Bias	3
2.1.3	Parameters	4
2.1.4	Events	4
2.2	Compared Parameters	5
2.3	Aspect	6
2.4	Star Slots	9
2.4.1	Slot 3	9
2.4.2	Slot 4	10
2.4.3	Slot 5	11
2.4.4	Slot 6	12
2.4.5	Slot 7	13
2.5	FID Slots	14
2.5.1	Slot 0	14
2.5.2	Slot 1	15
2.5.3	Slot 2	16
3	Point Sources	17
A	Summary	18
A.1	Status	18
A.2	Comments	18

1 Front

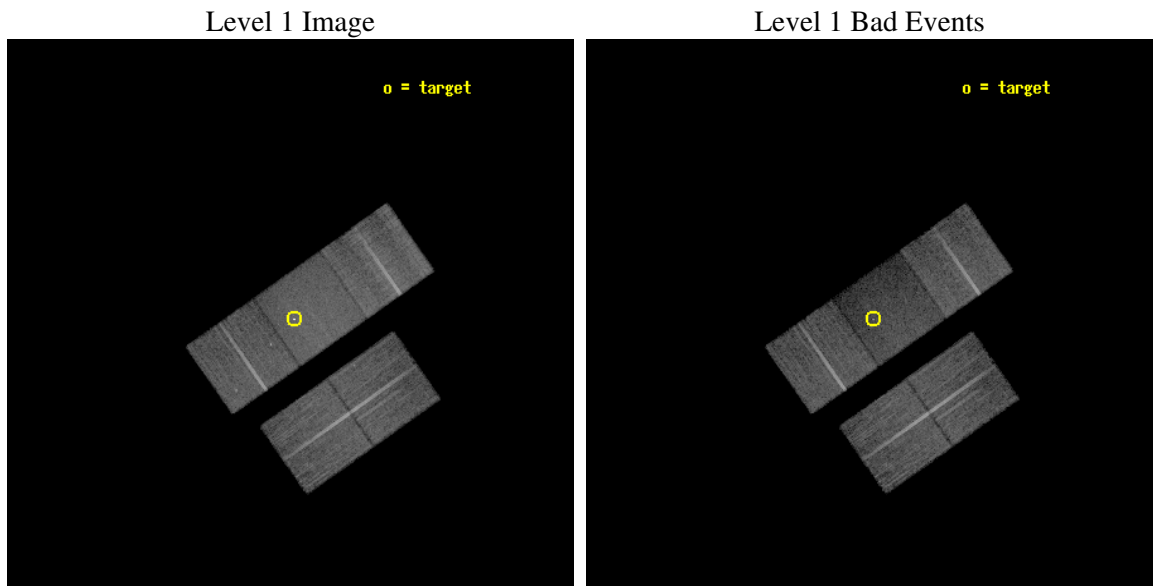
seq_num	200245
obs_id	4476
title	Observation of a brown dwarf, GJ1245ABC
observer	Professor Gordon Garmire
object	GJ1245
dtcycle	0
cycle	P
ra_targ	298.478333
dec_targ	44.415
ra_nom	298.48726176777
dec_nom	44.408441981163
roll_nom	324.8671192892
revision	2
ontime	24099.399953663
livetime	23784.523551549
ontime2	24099.399953663
ontime3	24099.399953663
ontime6	24099.399953663
ontime7	24099.399953663
ontime8	24096.258963495
l2events	102870



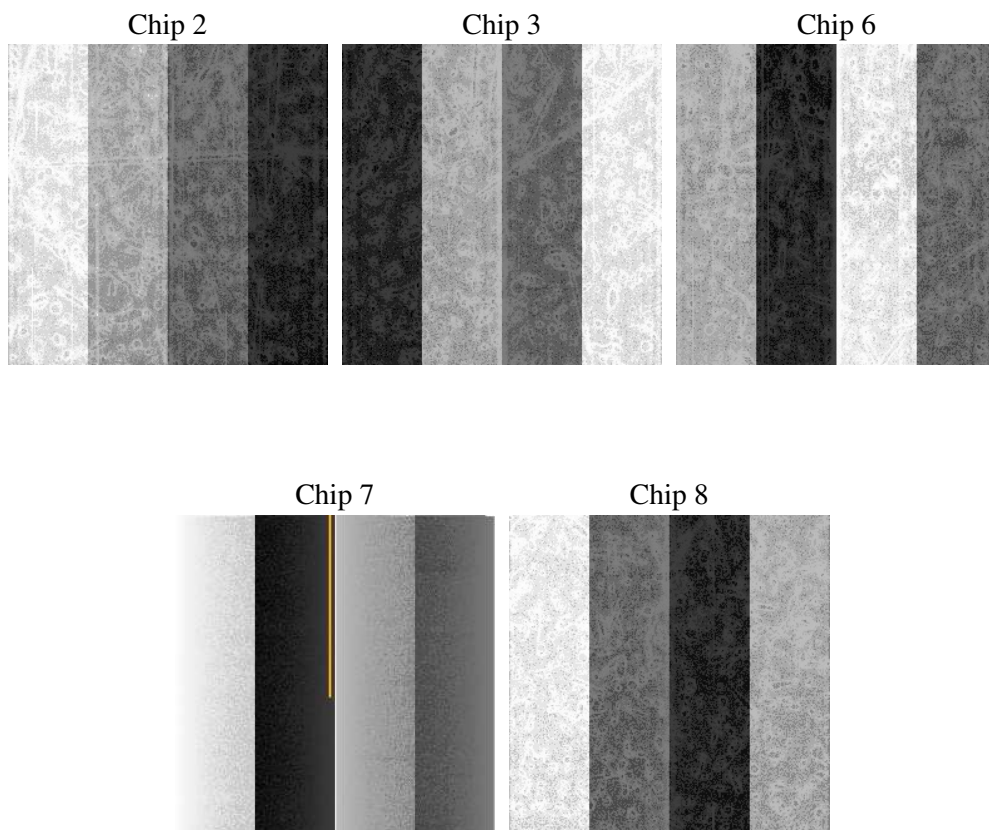
2 OBI

2.1 OBI

2.1.1 Images



2.1.2 Bias



2.1.3 Parameters

obi_num	0
ascdsver	7.6.8
caldbver	3.2.2
date	2006-06-23T15:27:36
revision	2

sched_exp_time	23967.519000
ontime	24104.048976839
ontime2	24104.048976839
ontime3	24104.048976839
ontime6	24104.048976839
ontime7	24104.048976839
ontime8	24100.907986671
l1events	587626

2.1.4 Events

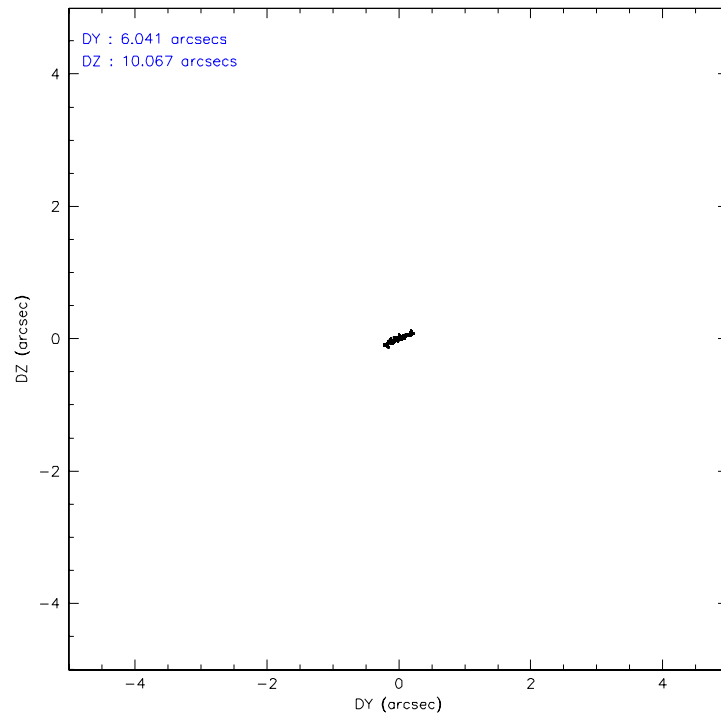
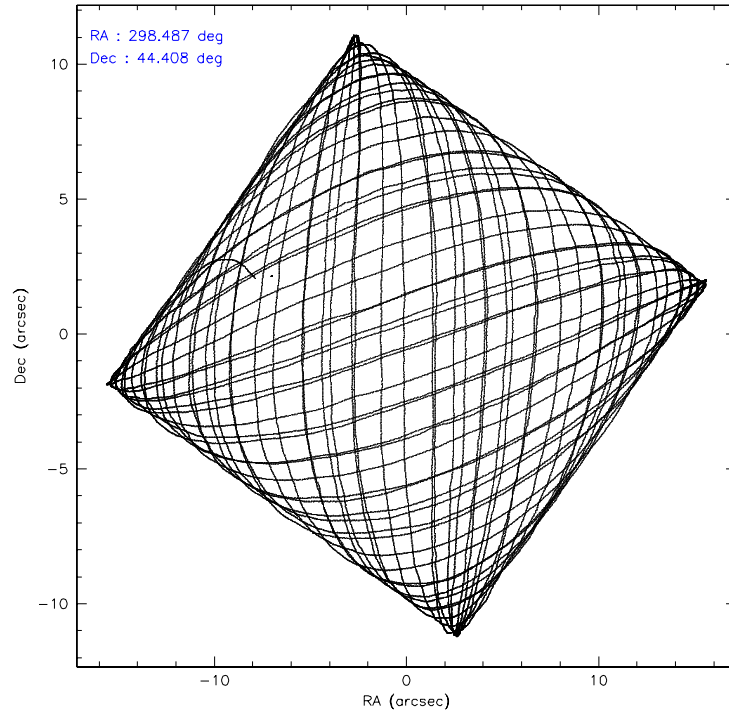
	ccd 2	ccd 3	ccd 6	ccd 7	ccd 8
level 1 events	113648	107292	110458	121655	134573
rejected events	102426	96441	97111	59396	102245
rejected %	90%	89%	87%	48%	75%

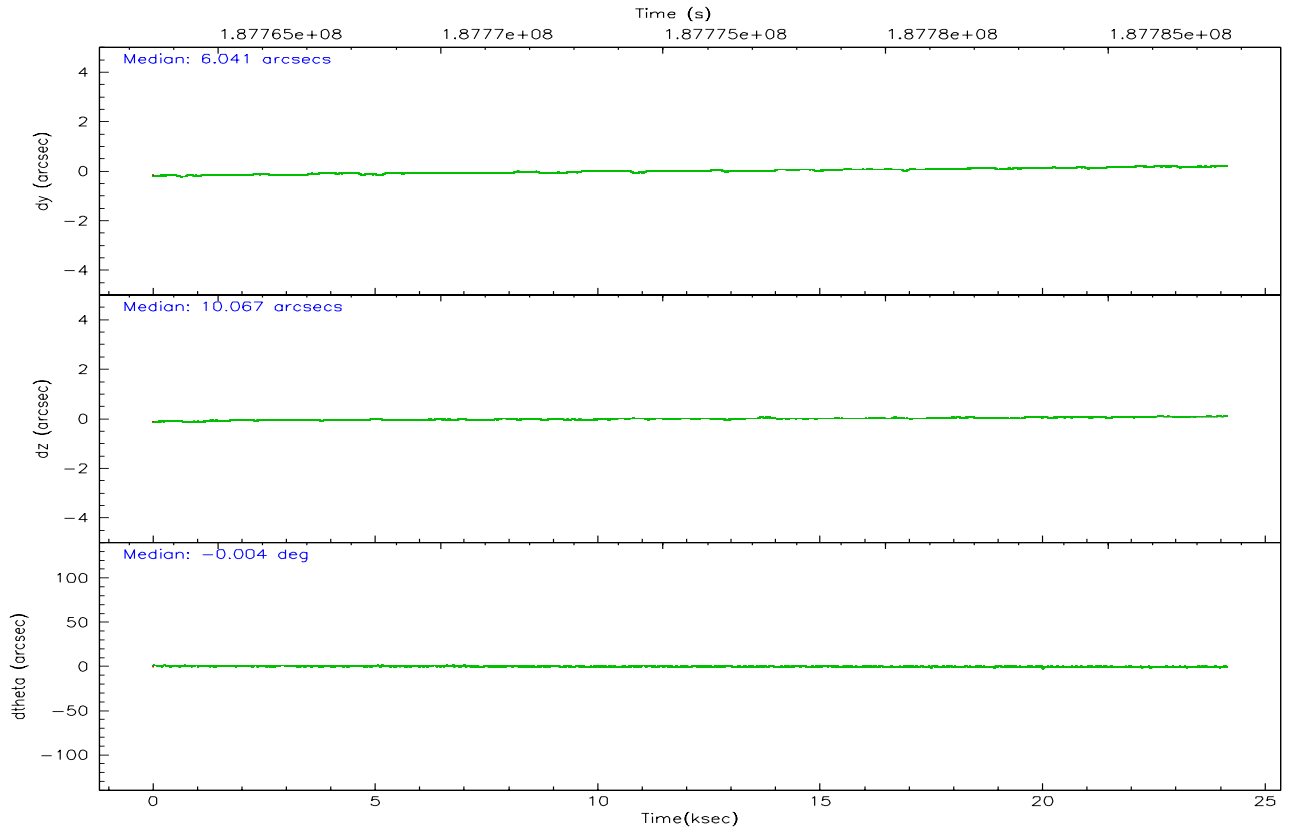
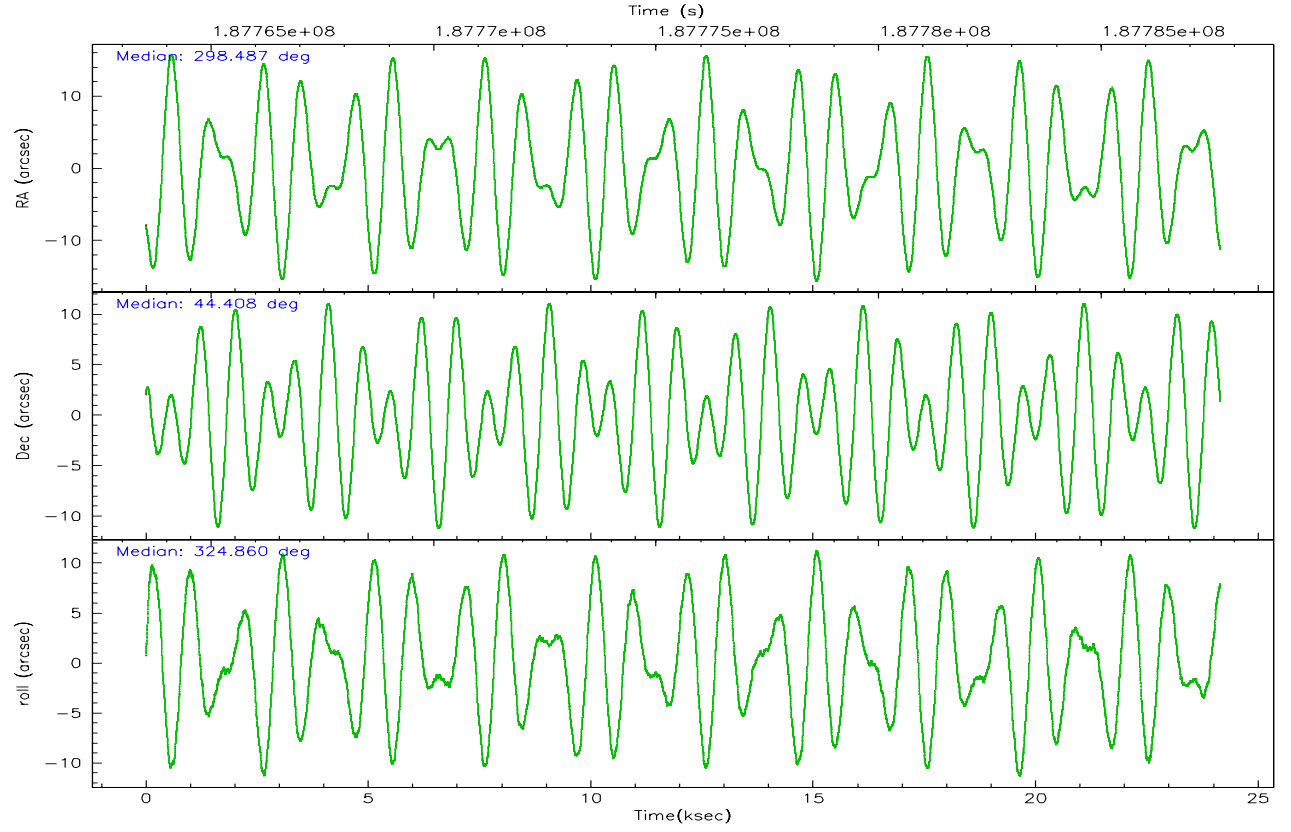
	ccd 2	ccd 3	ccd 6	ccd 7	ccd 8
grade 0 events	4470	4262	5587	5550	9628
	3%	3%	5%	4%	7%
grade 1 events	43	55	56	90	103
	0%	0%	0%	0%	0%
grade 2 events	2472	2152	2658	15505	7131
	2%	2%	2%	12%	5%
grade 3 events	1247	1254	1308	3867	3581
	1%	1%	1%	3%	2%
grade 4 events	1219	1180	1351	3962	3297
	1%	1%	1%	3%	2%
grade 5 events	3008	3762	3823	8717	5705
	2%	3%	3%	7%	4%
grade 6 events	1819	2004	2448	33390	8691
	1%	1%	2%	27%	6%
grade 7 events	99370	92623	93227	50574	96437
	87%	86%	84%	41%	71%

2.2 Compared Parameters

Parameter	Planned	Actual	Parameter	Planned	Actual
Instrument	ACIS	ACIS	Obspar format version number	6	6
Detector	ACIS-23678	ACIS-23678	Obspar file type	PREDICTED	ACTUAL
Grating	NONE	NONE	Obspar update status	NONE	UPDATED
Data mode	VFAINT	VFAINT	On-chip summing requested	N	N
Observation mode	POINTING	POINTING	Subarray requested	NONE	NONE
Pointing RA	298.449289	298.4872617677699	Alternating exposures requested	N	N
Pointing Dec	44.410485	44.40844198116268	Primary exposure time	0.000000	3.1
Pointing Roll	324.737071	324.8671192891994			
SIM focus pos (mm)	-0.684267	-0.6828225247311905			
SIM defocus (mm)	0	0.001444936568705701			
SIM translation stage pos (mm)	-190.132523	-190.1425803651734			
SIM translation stage offset (mm)	0	0.01005778216563158			
Observation start time	187763719.184000	187762744.54352			
Observation start date	2003-12-14T04:34:15	2003-12-14T04:19:04			
Observation end time	187787687.184000	187788002.08212			
Observation end date	2003-12-14T11:13:43	2003-12-14T11:20:02			
Read mode	TIMED	TIMED			

2.3 Aspect



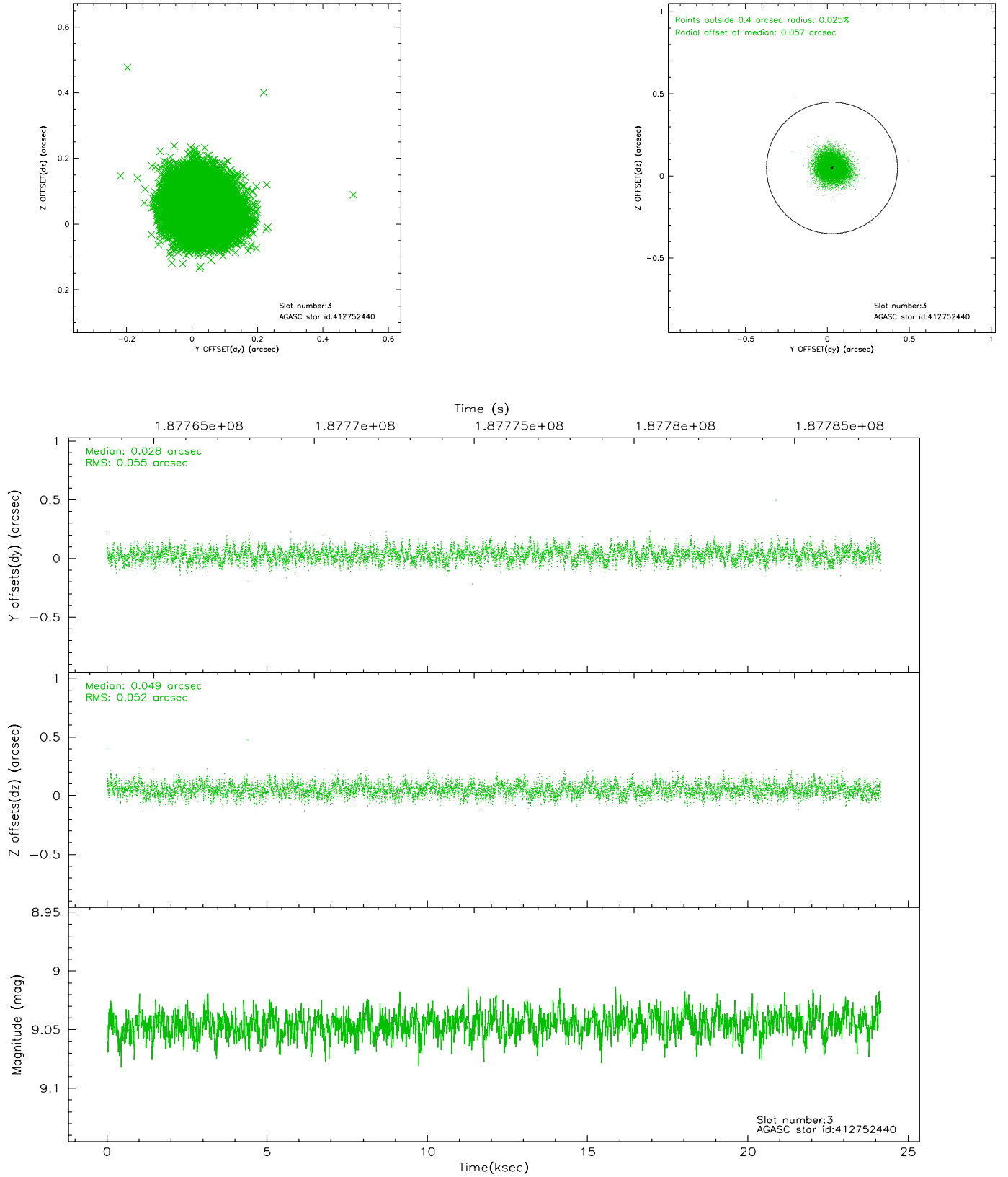


Slot Statistics

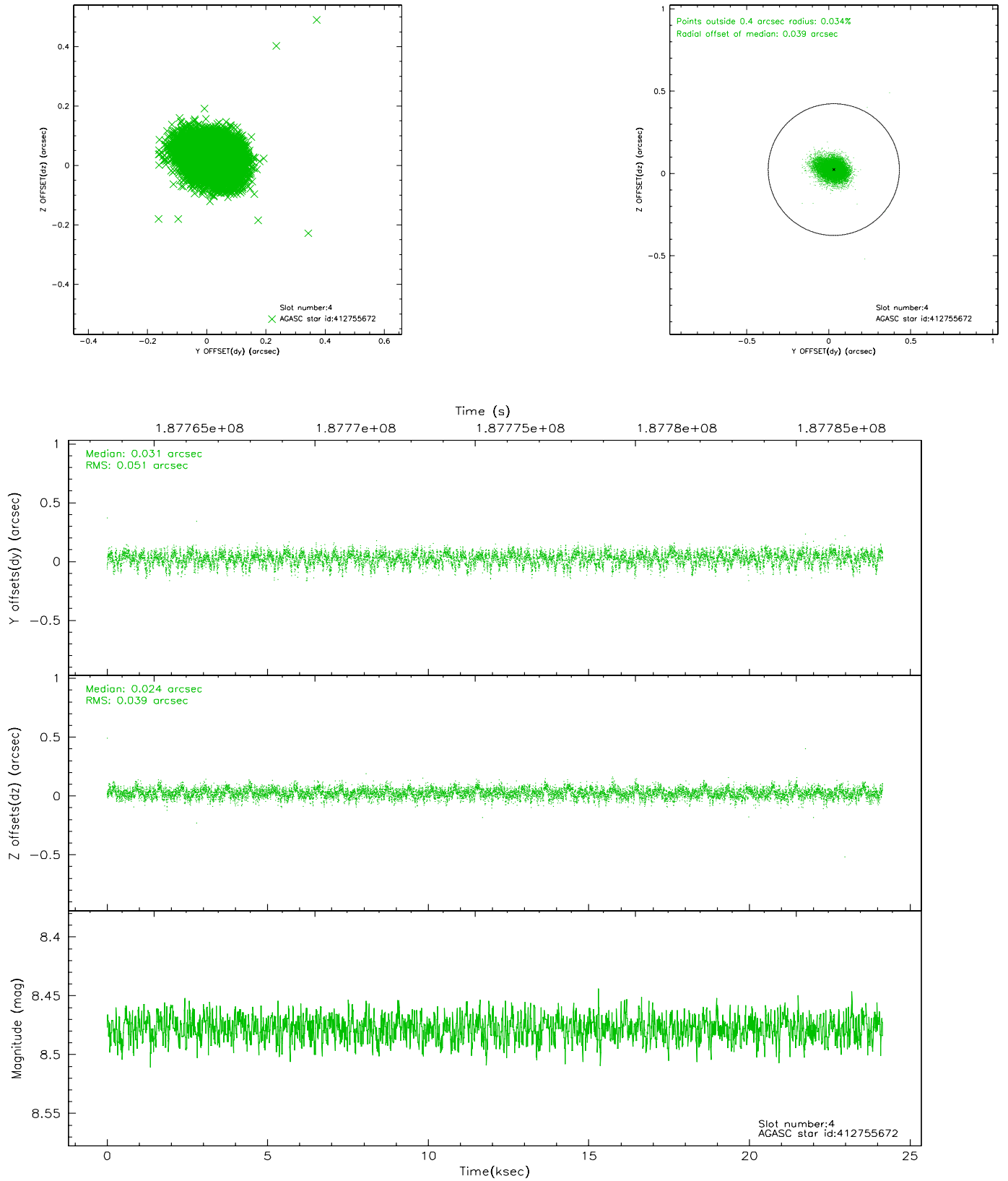
slot	status	id	mag	n_pts	med_dy	med_dz	dr1	dr2	ra	dec	mean_y	mean_z
0	FID	ACIS-S-2	7.10	5889	-0.041	-0.016	0.005	0.009	0.000000	0.000000	-758.81	-1731.28
1	FID	ACIS-S-4	7.20	5891	0.017	0.030	0.006	0.010	0.000000	0.000000	2154.46	177.13
2	FID	ACIS-S-6	7.34	5891	-0.004	-0.007	0.007	0.012	0.000000	0.000000	403.37	814.62
3	GUIDE	412752440	9.05	11769	0.028	0.049	0.081	0.128	298.920592	44.584276	623.72	1211.49
4	GUIDE	412755672	8.48	11779	0.031	0.024	0.067	0.113	298.843552	43.755014	2198.68	-1332.41
5	GUIDE	412756488	7.75	11779	-0.049	-0.030	0.054	0.089	297.741278	44.324825	-1314.64	-1298.49
6	GUIDE	412760496	8.78	11778	-0.013	0.017	0.074	0.124	298.220099	43.779237	825.66	-2198.72
7	GUIDE	412751096	8.52	11779	0.009	-0.060	0.070	0.116	299.192555	44.741543	859.03	2077.35

2.4 Star Slots

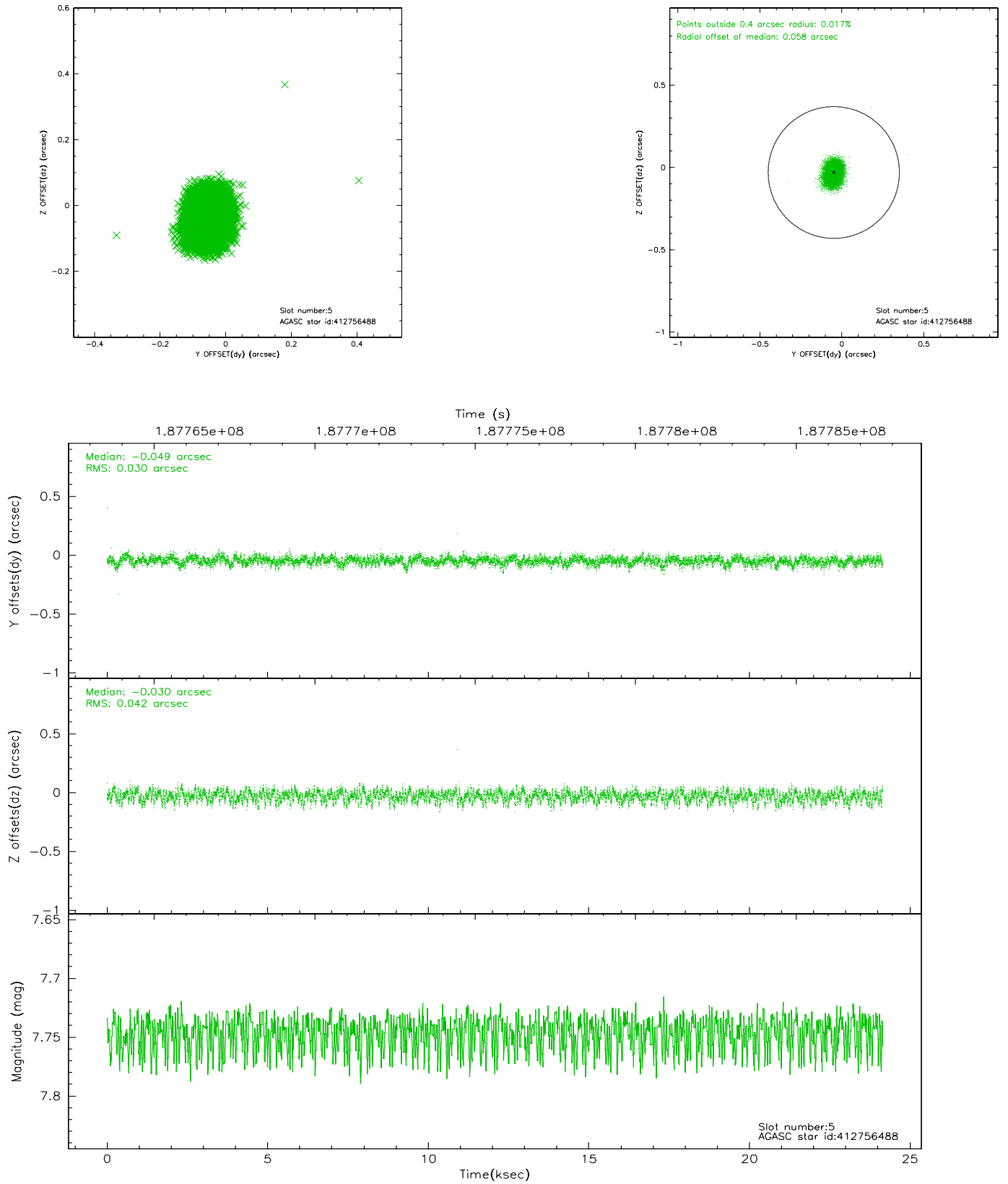
2.4.1 Slot 3



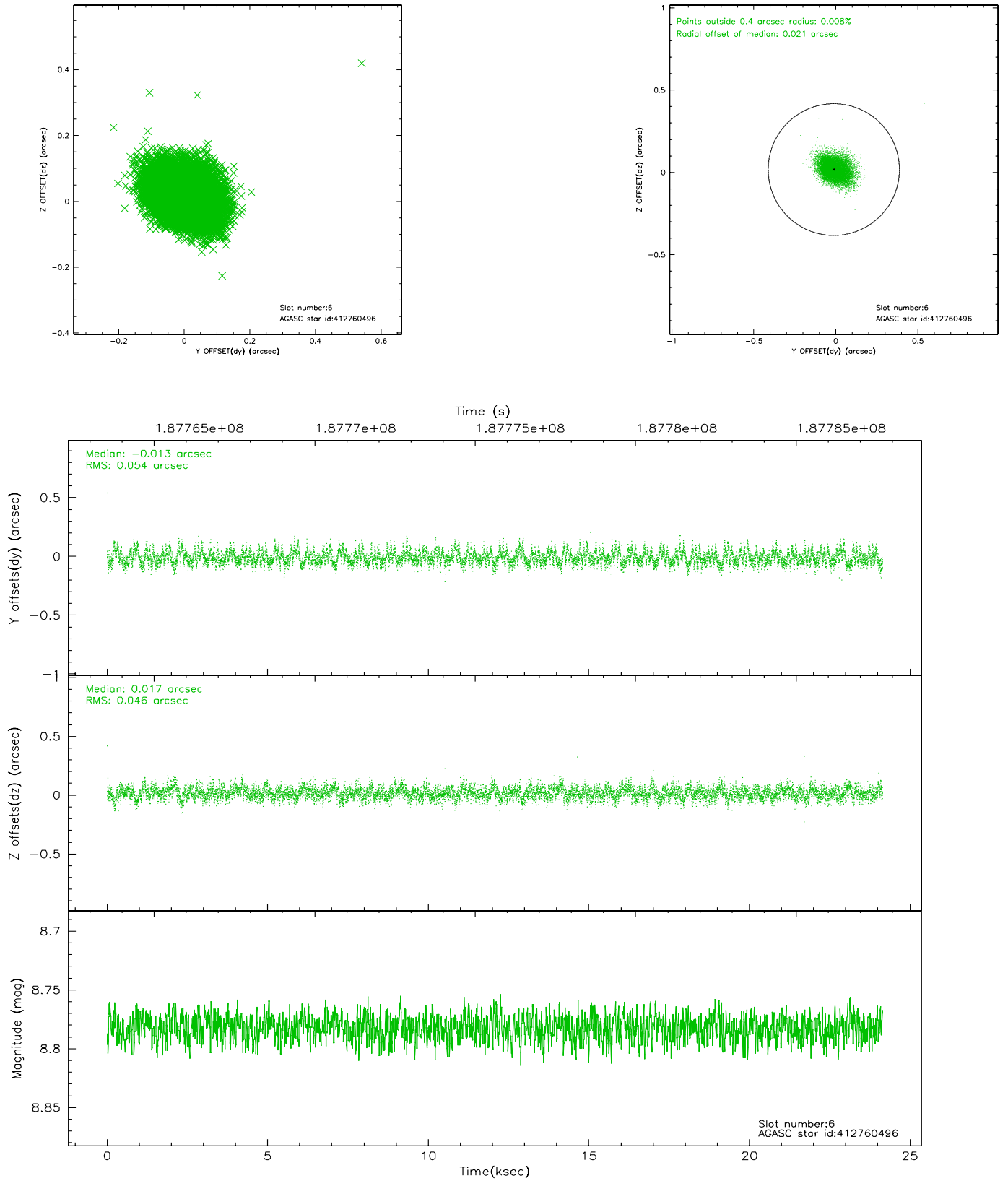
2.4.2 Slot 4



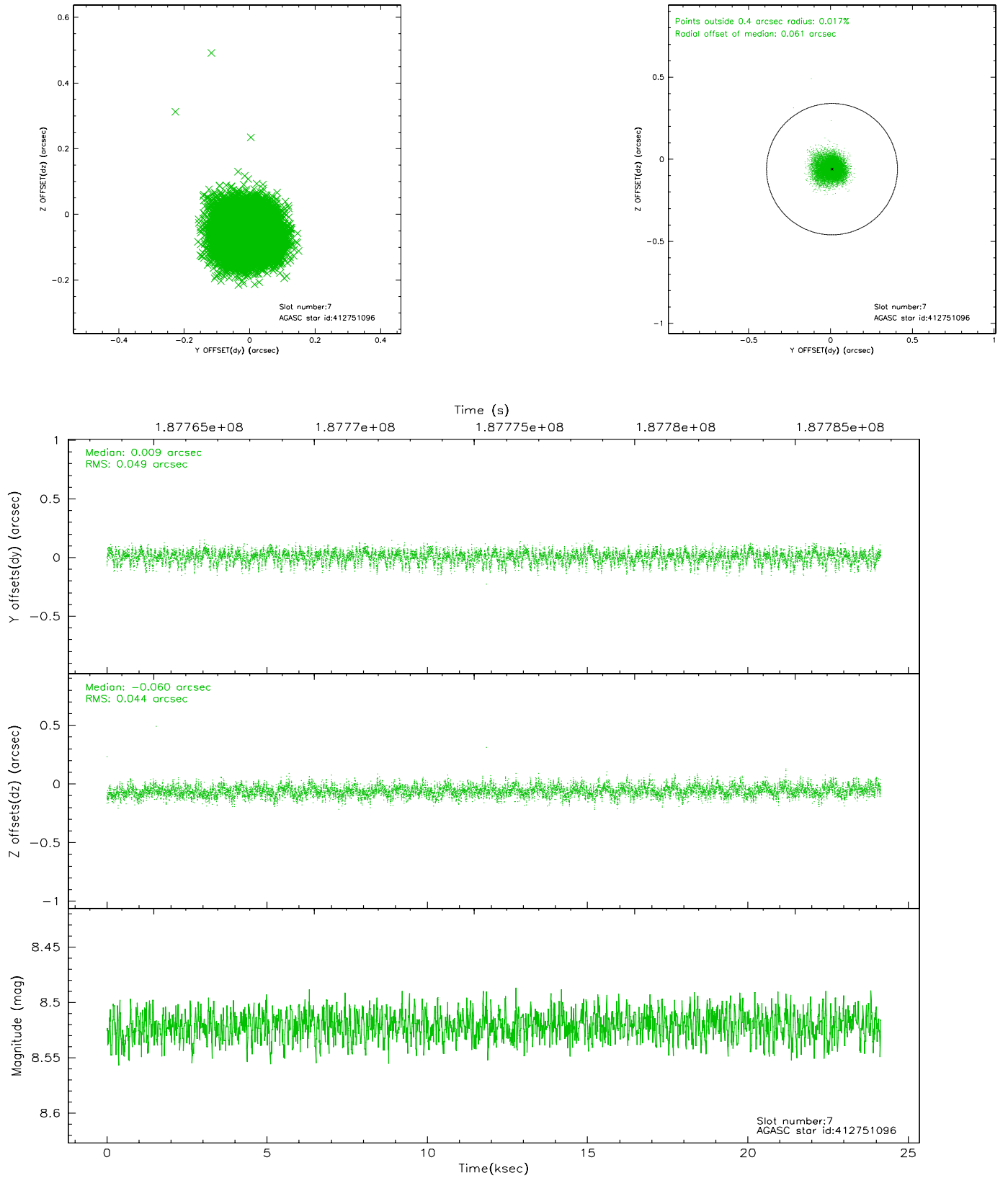
2.4.3 Slot 5



2.4.4 Slot 6

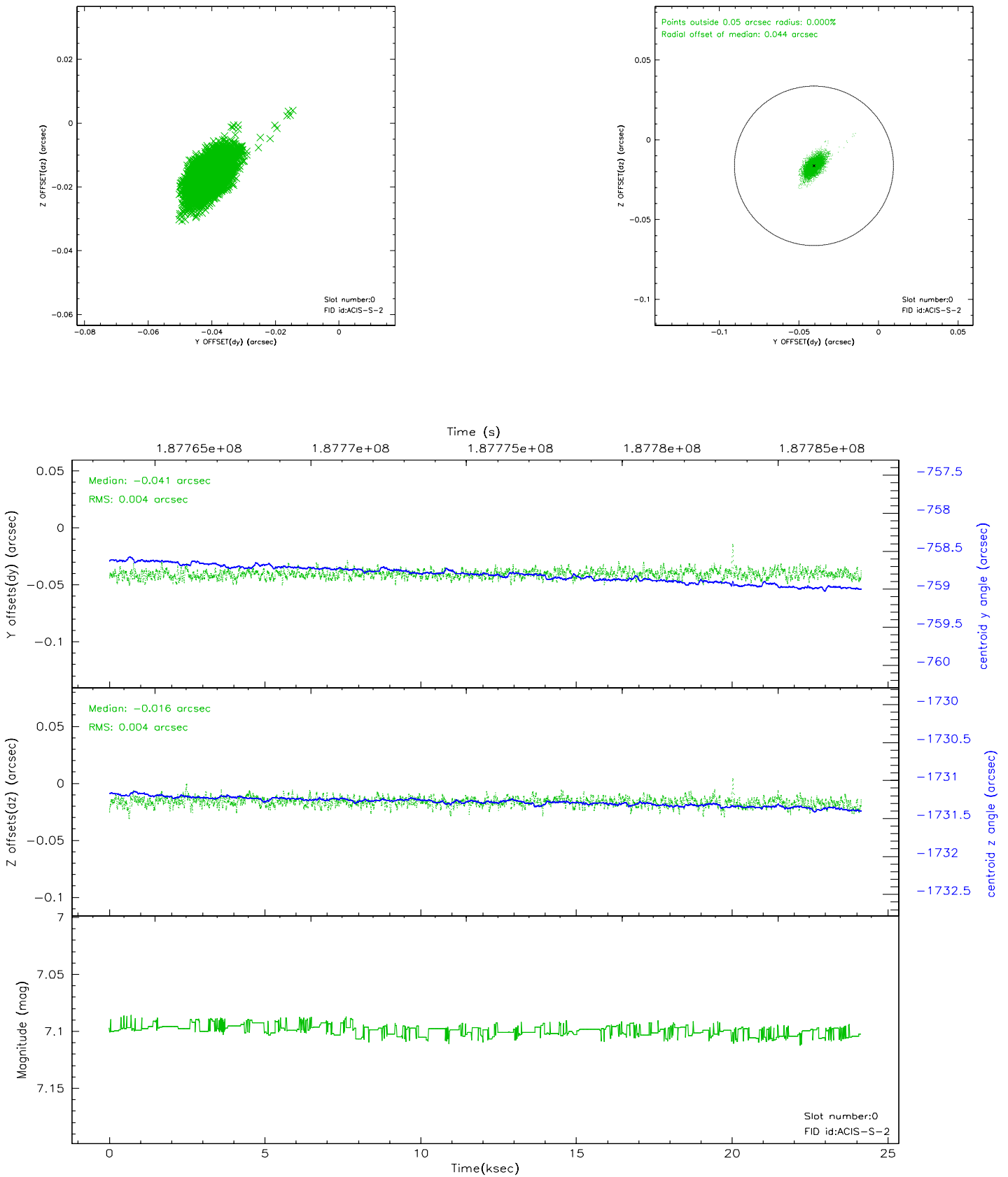


2.4.5 Slot 7

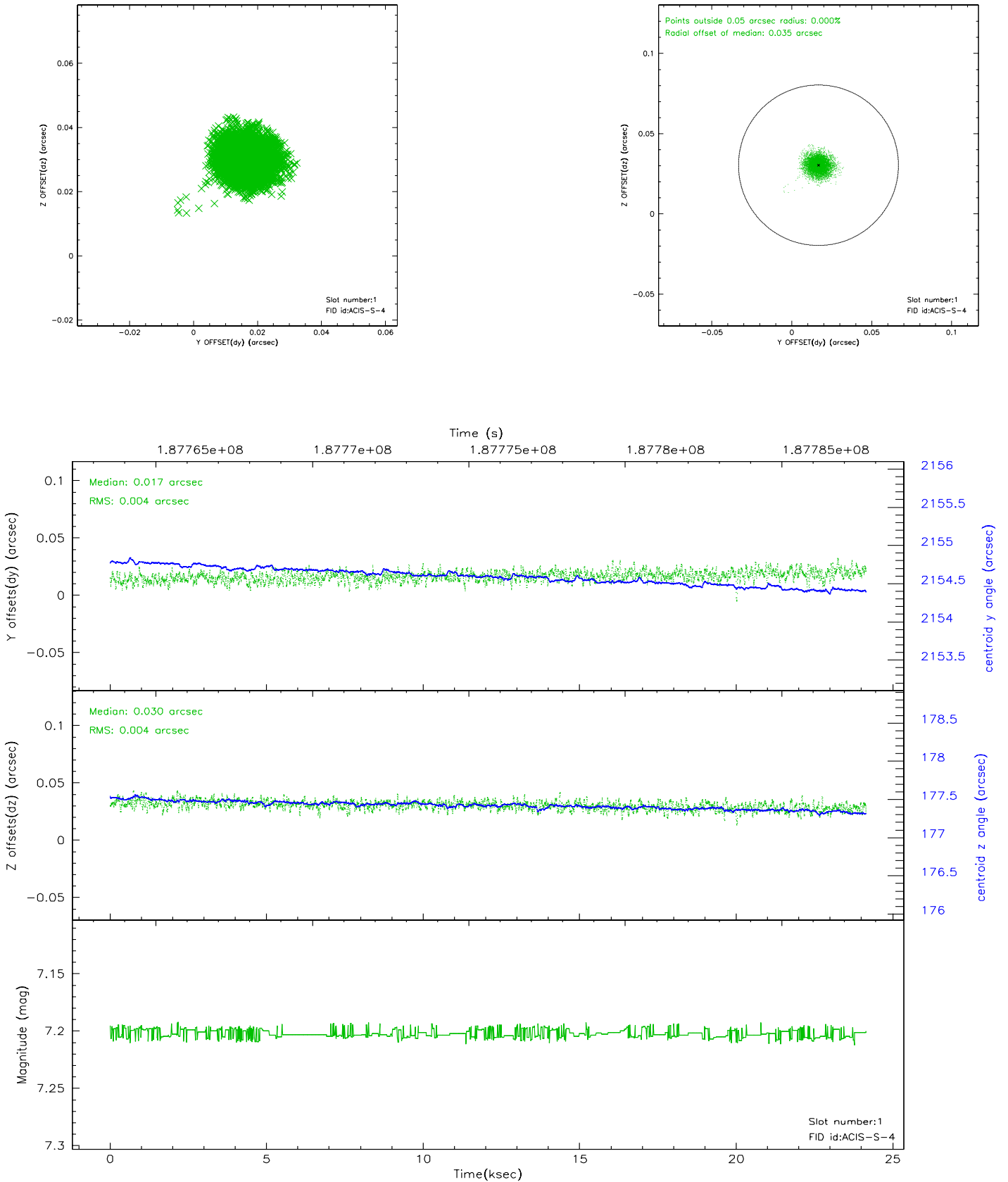


2.5 FID Slots

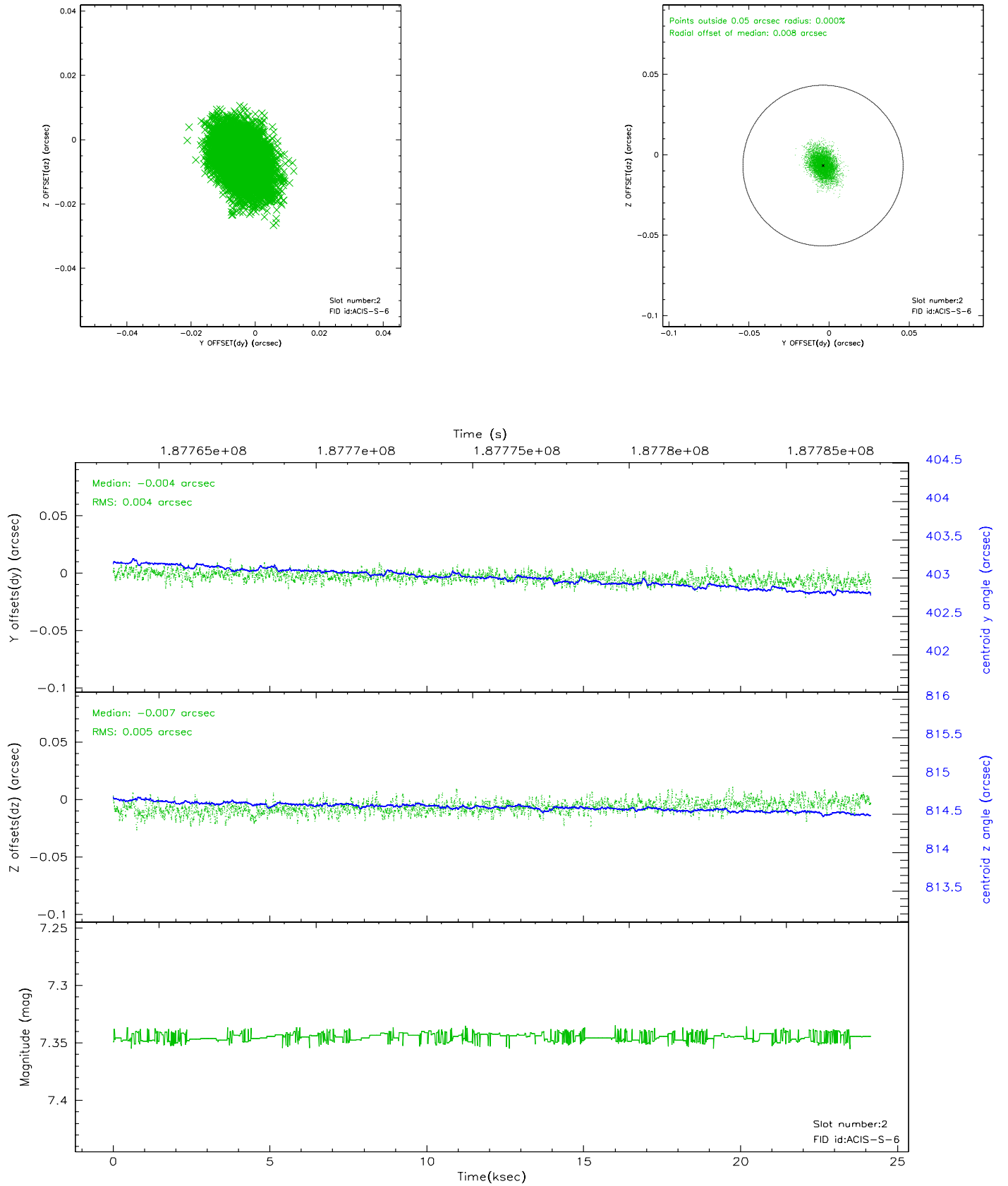
2.5.1 Slot 0



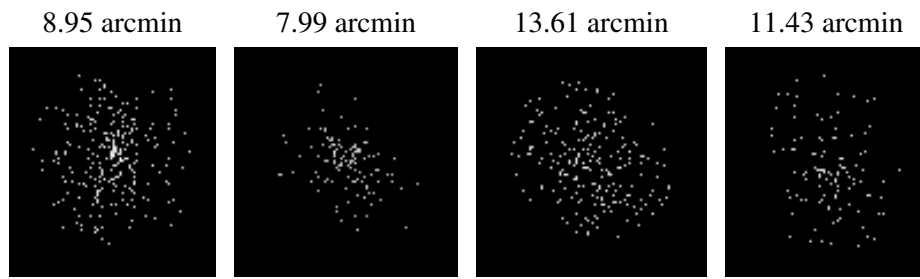
2.5.2 Slot 1



2.5.3 Slot 2



3 Point Sources



A Summary

A.1 Status

V&V Scientist	Jen Lauer
V&V Date (YYYY-MM-DD)	2006.06.23
V&V Edition	1
V&V Disposition and Status	OK
V&V Charge Time	24.102

A.2 Comments