

# V&V Reference Report

## L2 ASCDS Version : 8.4.5

Observation 4277 - L2 Version 3  
Chandra X-Ray Center

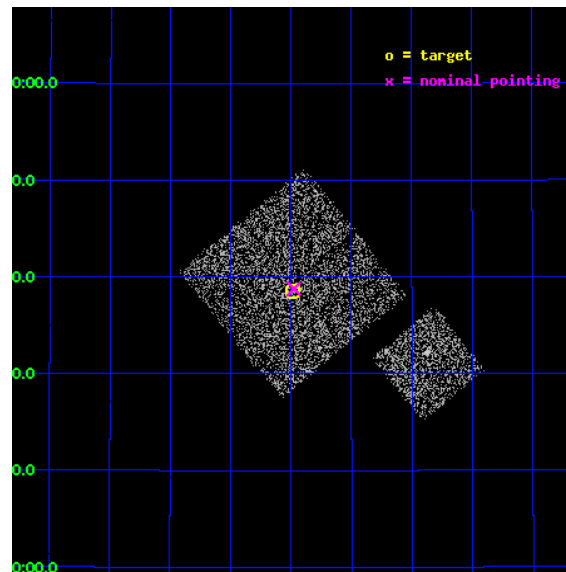
L2 Processing Date : Oct 25 2012

## Contents

<b>1</b>	<b>Front</b>	<b>2</b>
<b>2</b>	<b>OBI</b>	<b>3</b>
2.1	OBI . . . . .	3
2.1.1	Images . . . . .	3
2.1.2	Bias . . . . .	3
2.1.3	Parameters . . . . .	4
2.1.4	Events . . . . .	4
2.2	Compared Parameters . . . . .	5
2.3	Aspect . . . . .	6
2.4	Star Slots . . . . .	9
2.4.1	Slot 3 . . . . .	9
2.4.2	Slot 4 . . . . .	10
2.4.3	Slot 5 . . . . .	11
2.4.4	Slot 6 . . . . .	12
2.4.5	Slot 7 . . . . .	13
2.5	FID Slots . . . . .	14
2.5.1	Slot 0 . . . . .	14
2.5.2	Slot 1 . . . . .	15
2.5.3	Slot 2 . . . . .	16
<b>A</b>	<b>Summary</b>	<b>17</b>
A.1	Status . . . . .	17
A.2	Comments . . . . .	17

# 1 Front

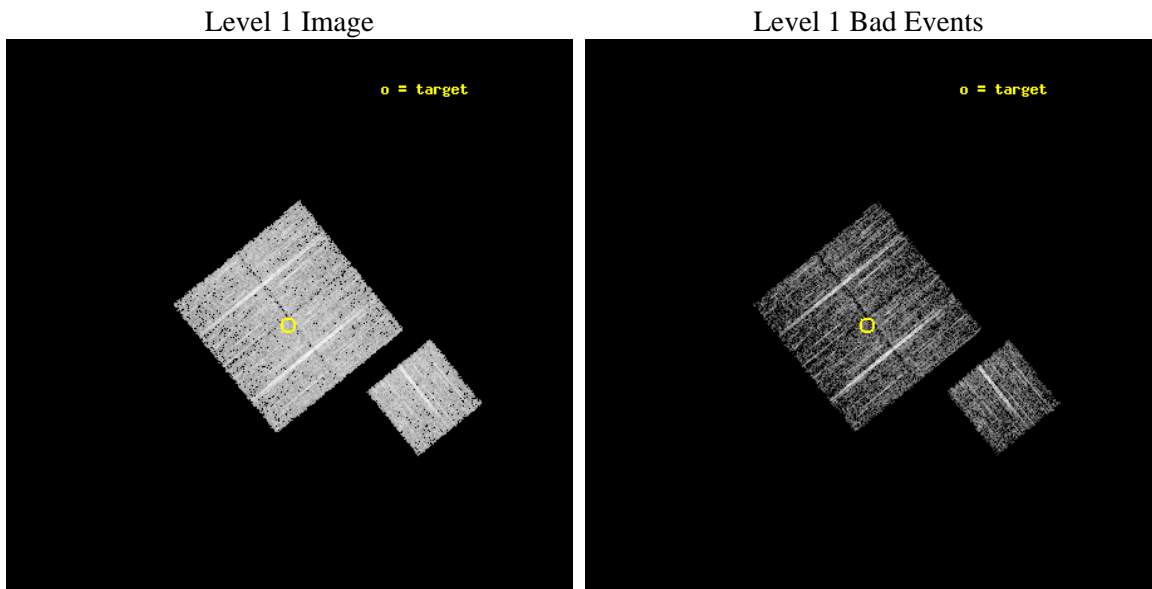
seq_num	900320	Sequence number
obs_id	4277	Observation id
title	CHANDRA LARGE SCALE SURVEY OF THE NOAO BOOTES DEEP FIELD	Proposal
observer	Dr. Stephen Murray	Principal investigator
object	NOAO FIELD F49	Source name
dtcycle	0	&#160
cycle	P	events from which exps? Prim/Second/Both
ra_targ	218.246914	Observer's specified target RA [deg]
dec_targ	32.642142	Observer's specified target Dec [deg]
ra_nom	218.24422994224	Nominal RA [deg]
dec_nom	32.646237334854	Nominal Dec [deg]
roll_nom	141.01016117751	Nominal Roll [deg]
revision	3	Processing version of data
ontime	4770.8589906693	Sum of GTIs [s]
livetime	4708.5242057009	Livetime [s]
ontime0	4773.9999907911	Sum of GTIs [s]
ontime1	4773.9999907911	Sum of GTIs [s]
ontime2	4773.9999907911	Sum of GTIs [s]
ontime3	4770.8589906693	Sum of GTIs [s]
ontime6	4773.9999907911	Sum of GTIs [s]
l2events	9390	Number of level 2 events



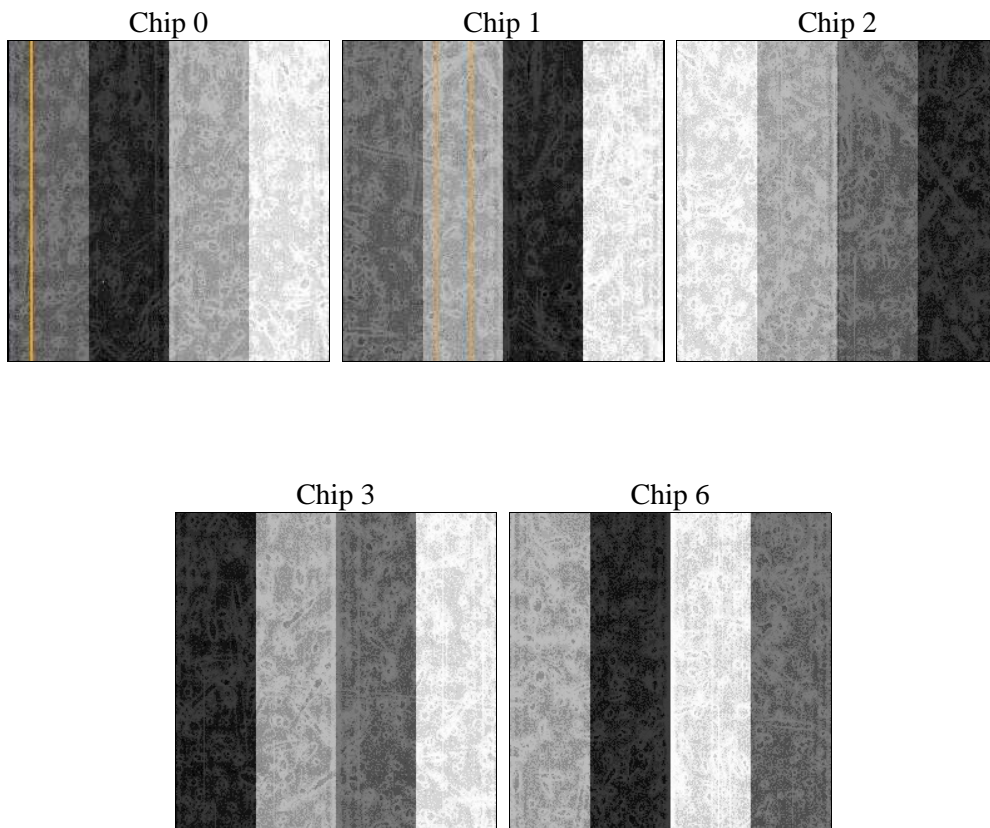
## 2 OBI

### 2.1 OBI

#### 2.1.1 Images



#### 2.1.2 Bias



### 2.1.3 Parameters

obi_num	1	Obi number	sched_exp_time	5000.000000	[s] Scheduled observation exposure time
ascdsver	8.4.5	Processing system revision	ontime	4770.8589906693	Sum of GTIs [s]
caldbver	4.5.2	&#160	ontime0	4773.9999907911	Sum of GTIs [s]
date	2012-10-25T23:00:34	Date and time of file creation	ontime1	4773.9999907911	Sum of GTIs [s]
revision	3	Processing version of data	ontime2	4773.9999907911	Sum of GTIs [s]
			ontime3	4770.8589906693	Sum of GTIs [s]
			ontime6	4773.9999907911	Sum of GTIs [s]
			l1events	119957	Number of level 1 events

### 2.1.4 Events

	ccd 0	ccd 1	ccd 2	ccd 3	ccd 6
level 1 events	23907	21840	25483	23794	24933
rejected events	21495	19547	23281	21644	22555
rejected %	89%	89%	91%	90%	90%

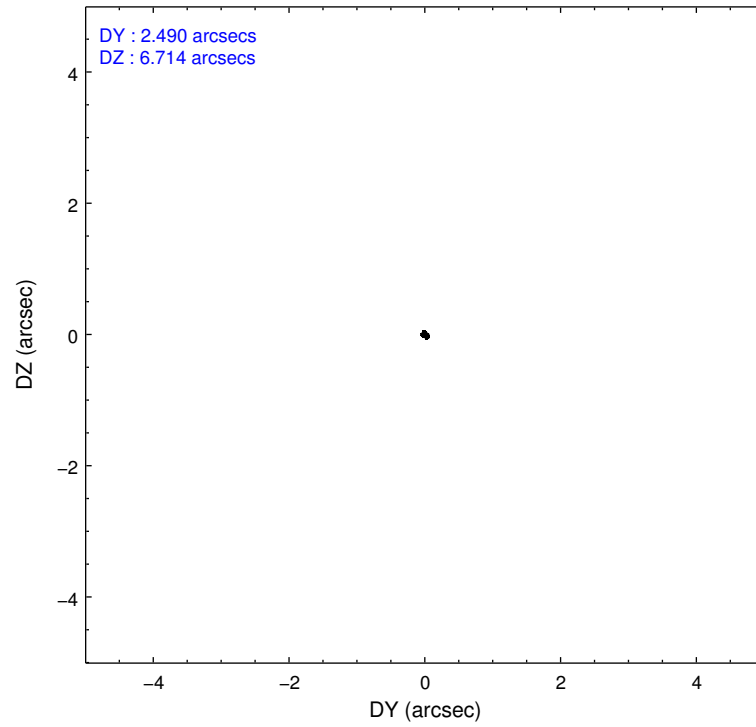
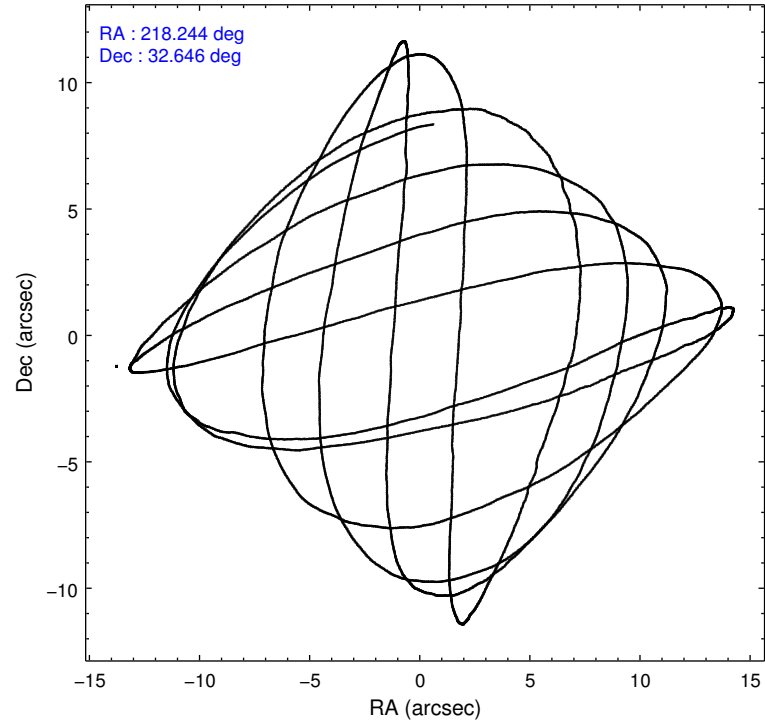
	ccd 0	ccd 1	ccd 2	ccd 3	ccd 6
grade 0 events	889	807	834	835	891
	3%	3%	3%	3%	3%
grade 1 events	10	9	12	14	16
	0%	0%	0%	0%	0%
grade 2 events	528	468	482	420	511
	2%	2%	1%	1%	2%
grade 3 events	273	272	243	264	251
	1%	1%	0%	1%	1%
grade 4 events	261	276	242	232	242
	1%	1%	0%	0%	0%
grade 5 events	649	734	648	796	762
	2%	3%	2%	3%	3%
grade 6 events	466	473	409	404	487
	1%	2%	1%	1%	1%
grade 7 events	20831	18801	22613	20829	21773
	87%	86%	88%	87%	87%

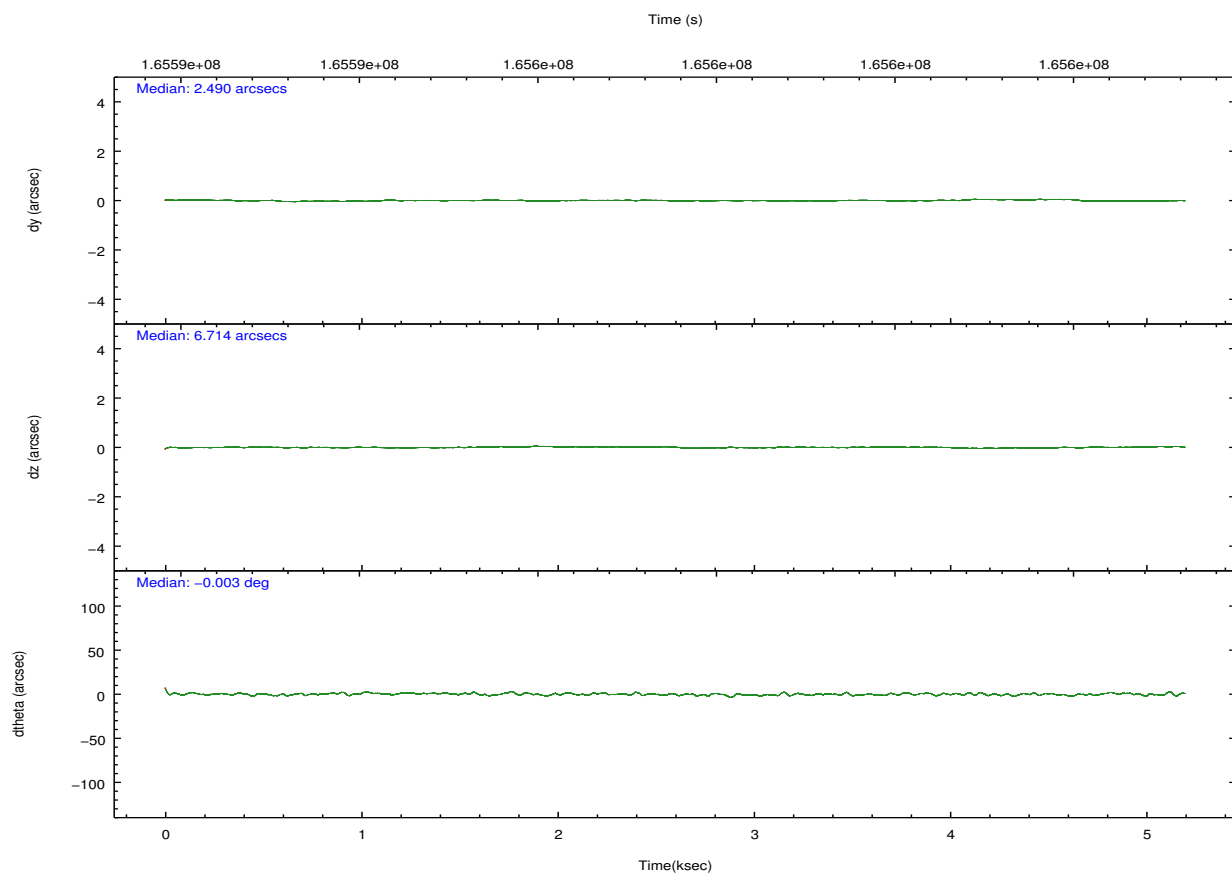
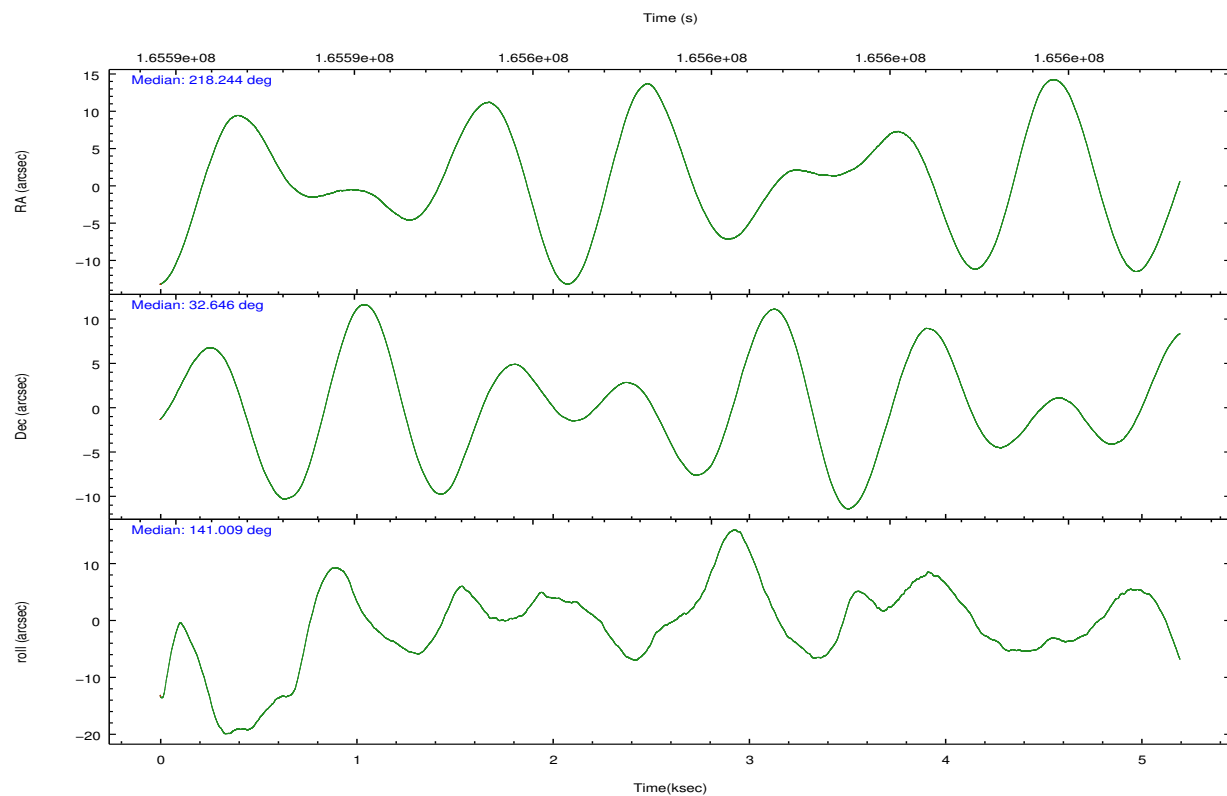


## 2.2 Compared Parameters

Parameter	Planned	Actual	Parameter	Planned	Actual
Instrument	ACIS	ACIS	Obspar format version number	7	7
Detector	ACIS-01236	ACIS-01236	Obspar file type	PREDICTED	ACTUAL
Grating	NONE	NONE	Obspar update status	NONE	UPDATED
Data mode	VFAINT	VFAINT	Number of optional ACIS chips dropped	0	0
Observation mode	POINTING	POINTING	On-chip summing requested	N	N
[deg] Pointing RA	218.276465	218.2442299422364	Subarray requested	NONE	NONE
[deg] Pointing Dec	32.642059	32.64623733485426	Alternating exposures requested	N	N
[deg] Pointing Roll	140.784060	141.0101611775116	[s] Primary exposure time	0.000000	3.1
[mm] SIM focus pos	-0.782348	-0.7809083437167272			
[mm] SIM defocus	0	0.001439871863259334			
[mm] SIM translation stage pos	-233.592463	-233.5874344608287			
[mm] SIM translation stage offset	0	-0.005018542100998502			
[s] Observation start time (MET)	165593363.184000	165592917.12097			
Observation start date	2003-04-01T14:08:19	2003-04-01T14:01:57			
[s] Observation end time (MET)	165598363.184000	165598496.70871			
Observation end date	2003-04-01T15:31:39	2003-04-01T15:34:56			
Read mode	TIMED	TIMED			

## 2.3 Aspect



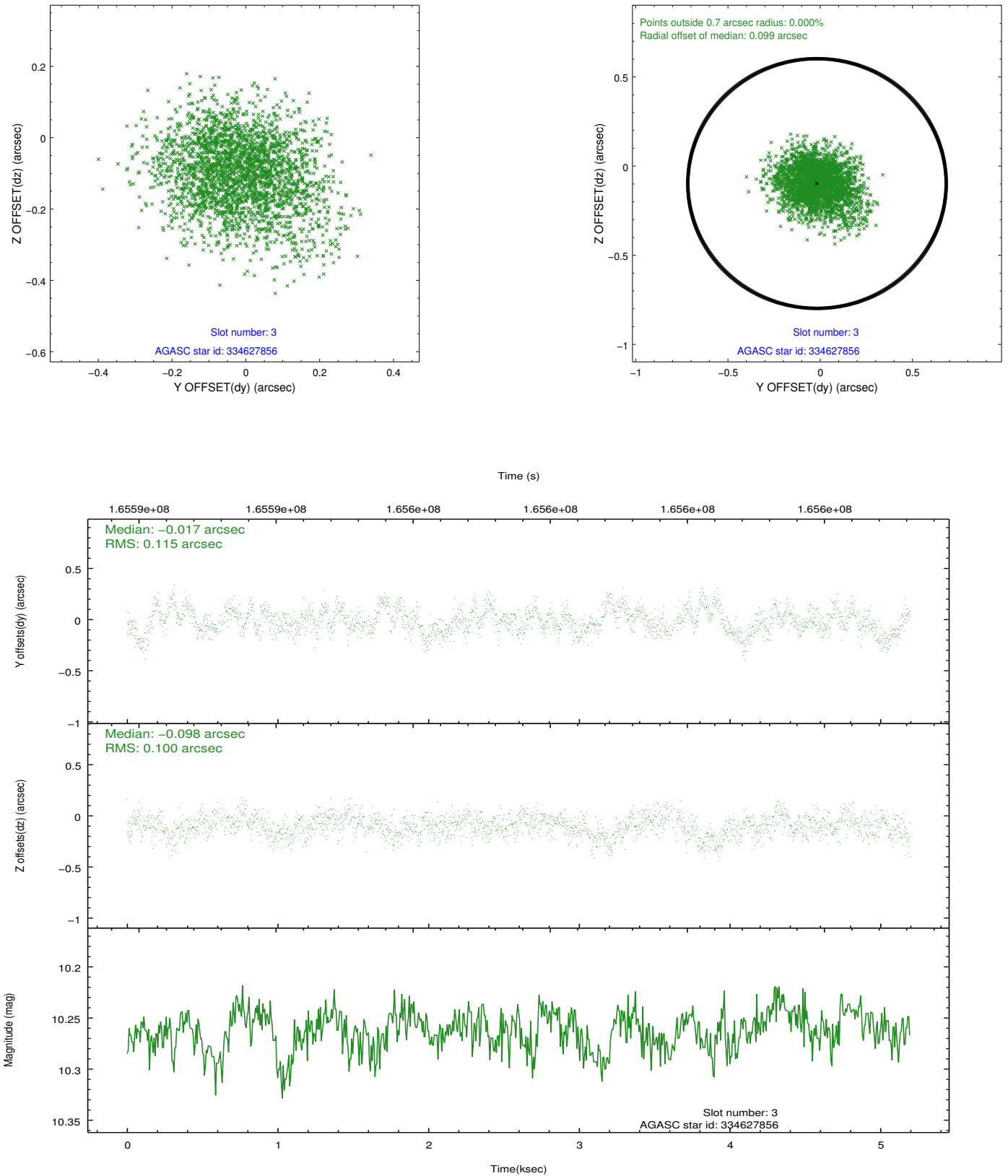


### Slot Statistics

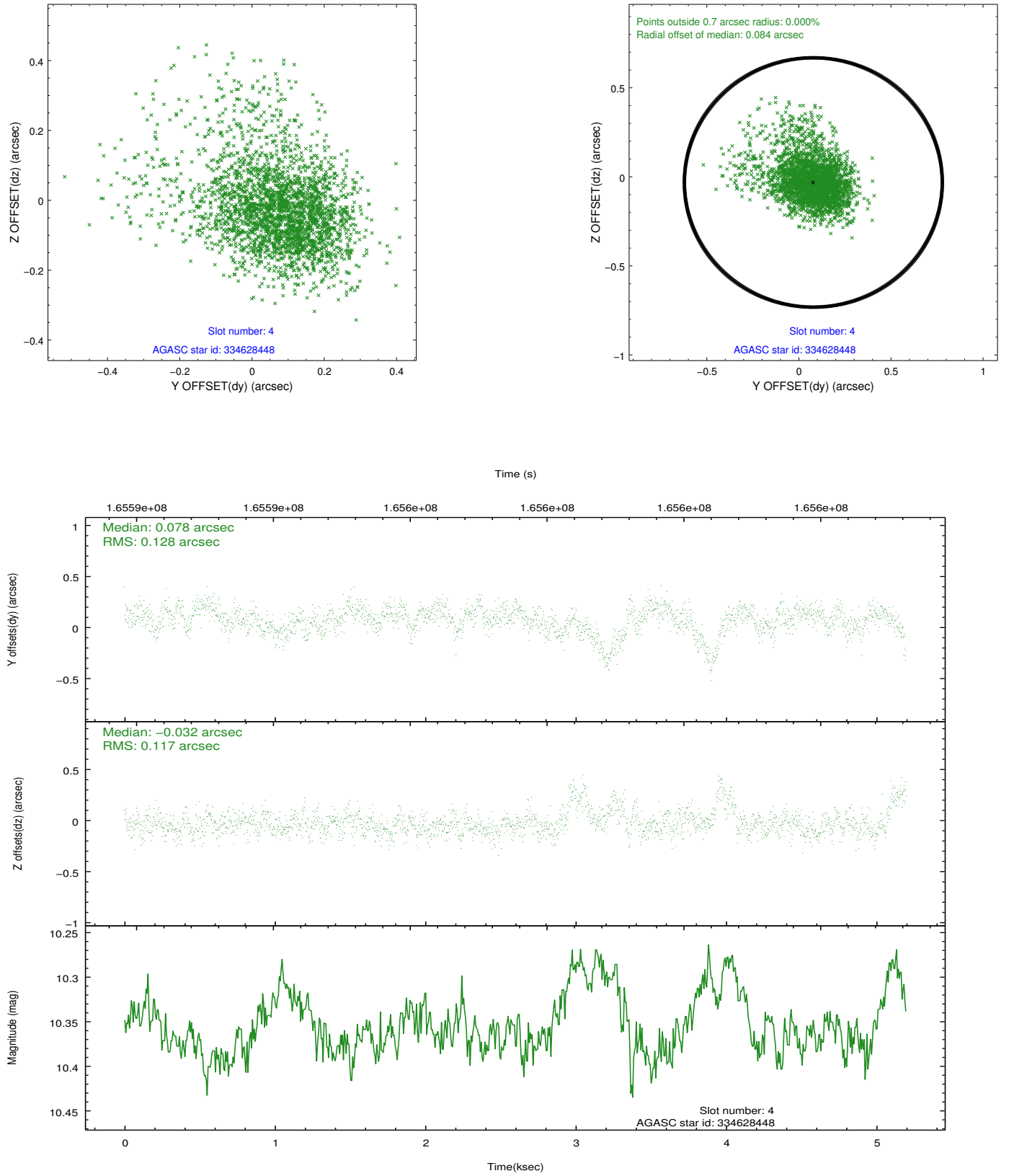
slot	status	id	mag	n_pts	med_dy	med_dz	dr1	dr2	ra	dec	mean_y	mean_z
0	FID	ACIS-I-1	7.25	1268	-0.093	0.007	0.009	0.014	0.000000	0.000000	937.24	-830.07
1	FID	ACIS-I-2	7.17	1267	-0.070	-0.037	0.007	0.011	0.000000	0.000000	-756.17	-837.17
2	FID	ACIS-I-4	7.18	1267	0.064	0.098	0.007	0.012	0.000000	0.000000	2156.72	1069.26
3	GUIDE	334627856	10.26	2496	-0.017	-0.098	0.161	0.266	217.544668	32.407167	1193.78	2055.52
4	GUIDE	334628448	10.36	2532	0.078	-0.032	0.168	0.343	218.514038	32.100683	-1792.19	1052.20
5	GUIDE	335027640	9.12	2535	0.062	-0.004	0.086	0.142	218.092211	33.193770	1685.84	-1187.70
6	GUIDE	335028616	9.97	2535	-0.041	0.052	0.140	0.227	218.529874	33.175085	622.95	-1970.29
7	GUIDE	335029384	8.50	2535	-0.068	0.078	0.070	0.116	217.848061	33.088477	2019.26	-430.72

## 2.4 Star Slots

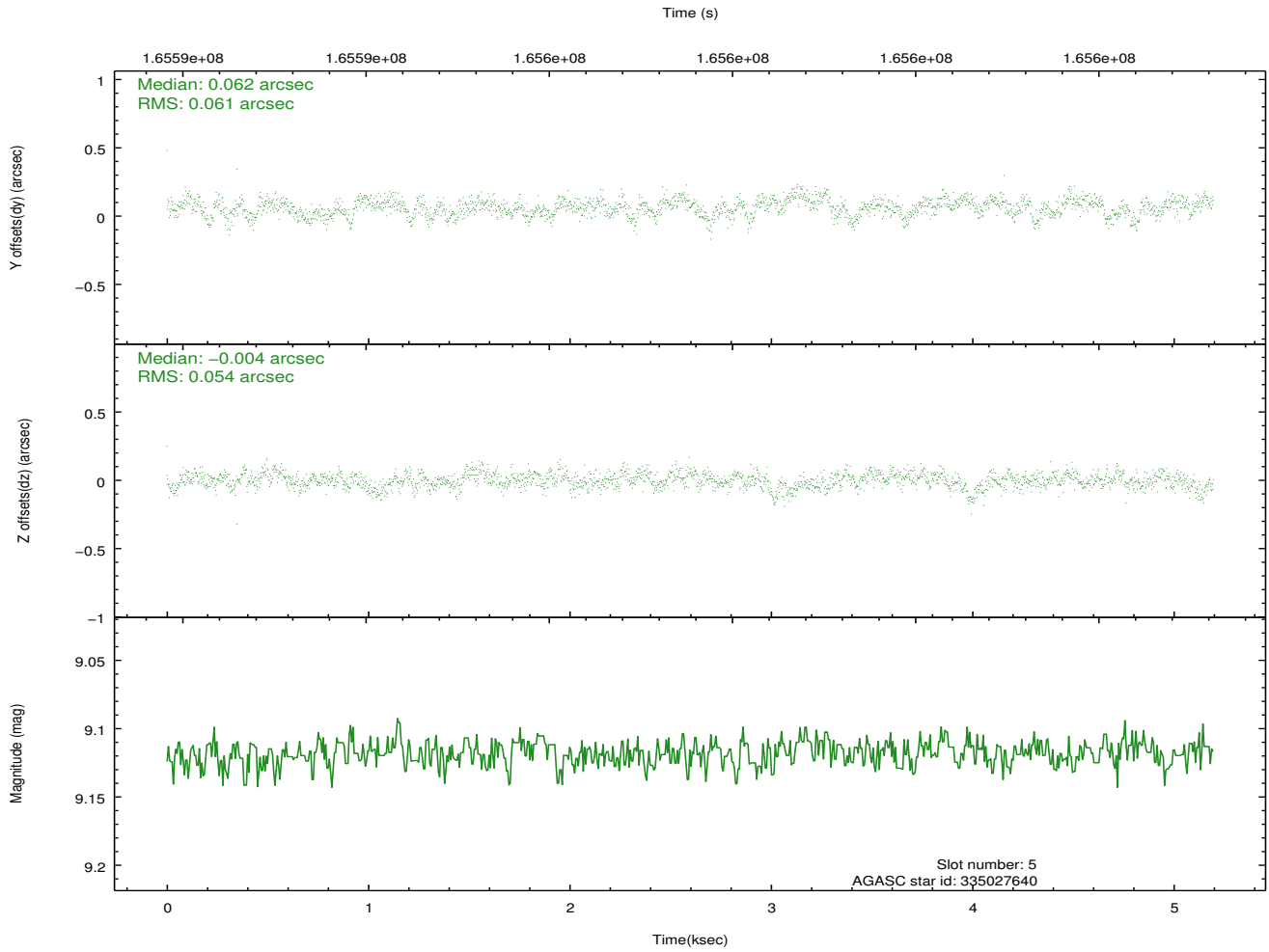
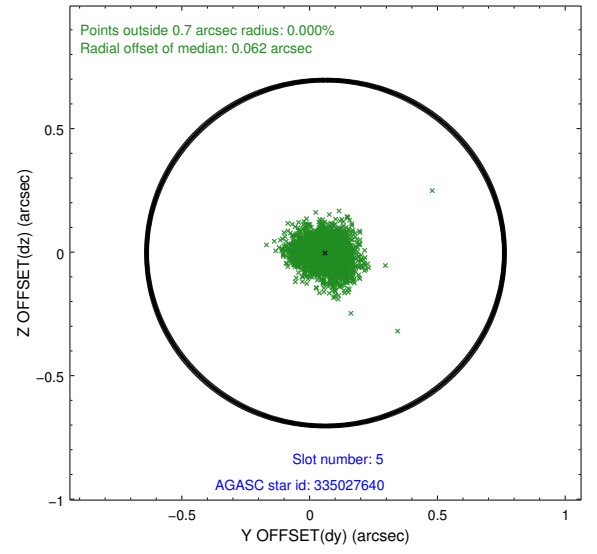
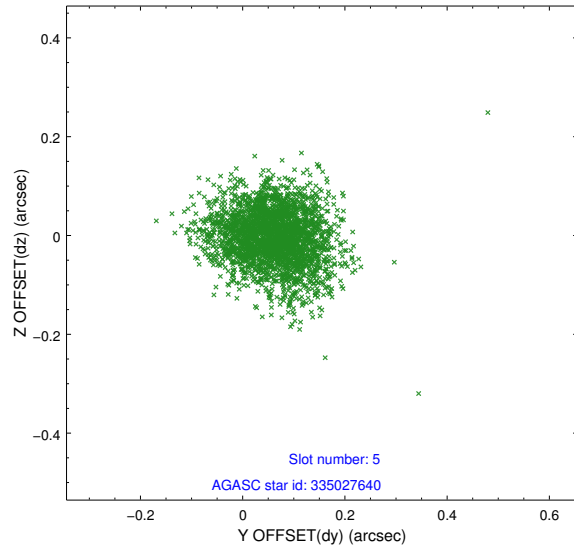
### 2.4.1 Slot 3



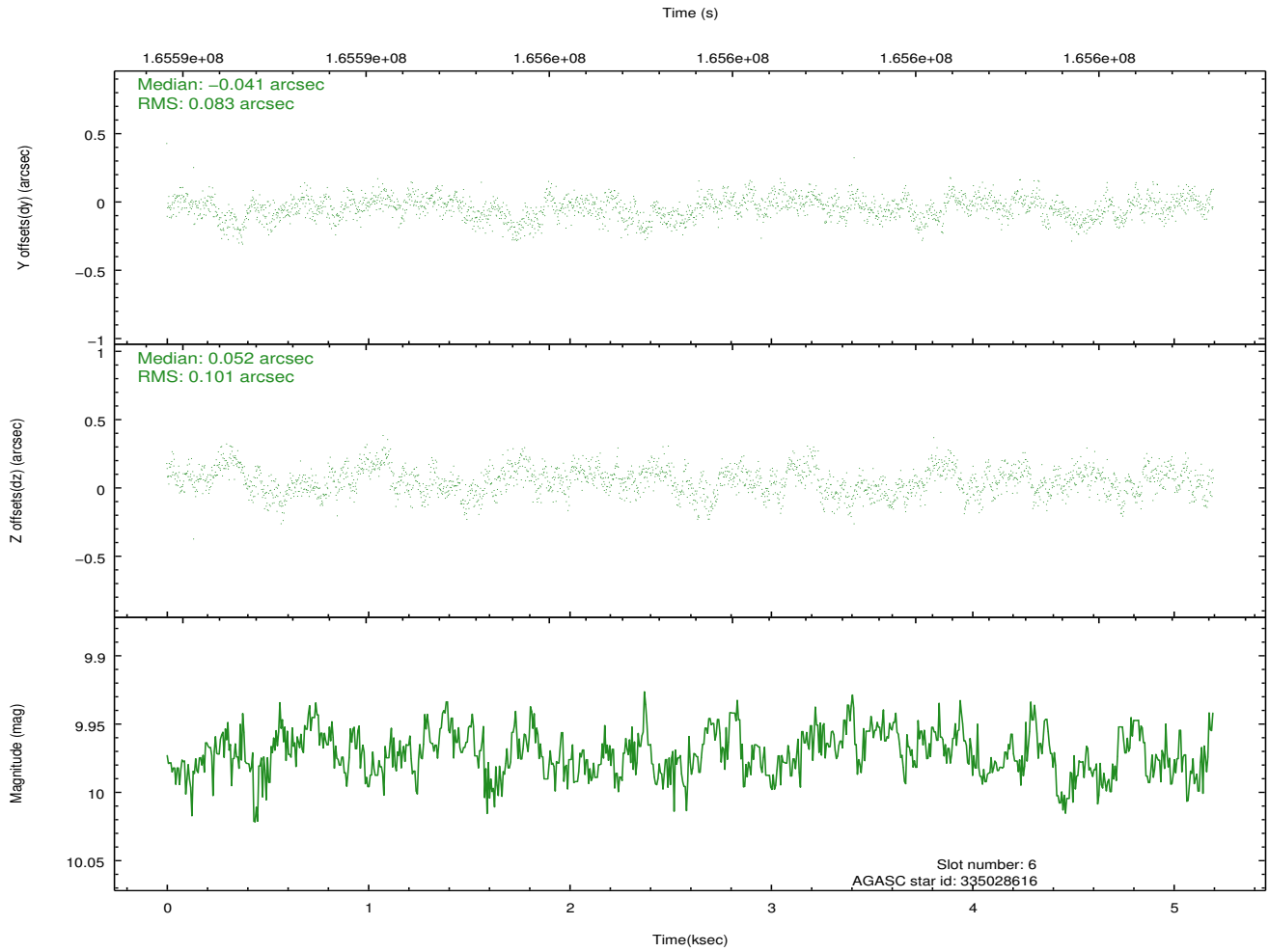
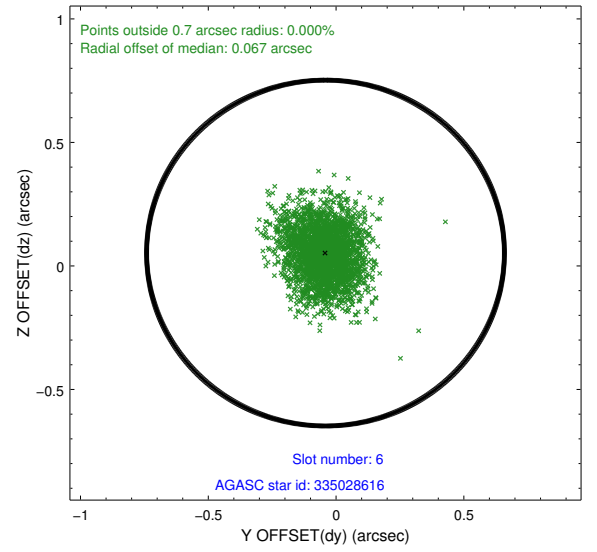
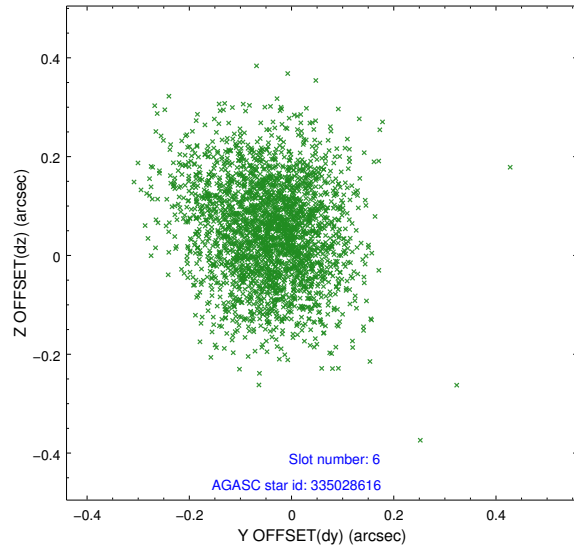
## 2.4.2 Slot 4



### 2.4.3 Slot 5

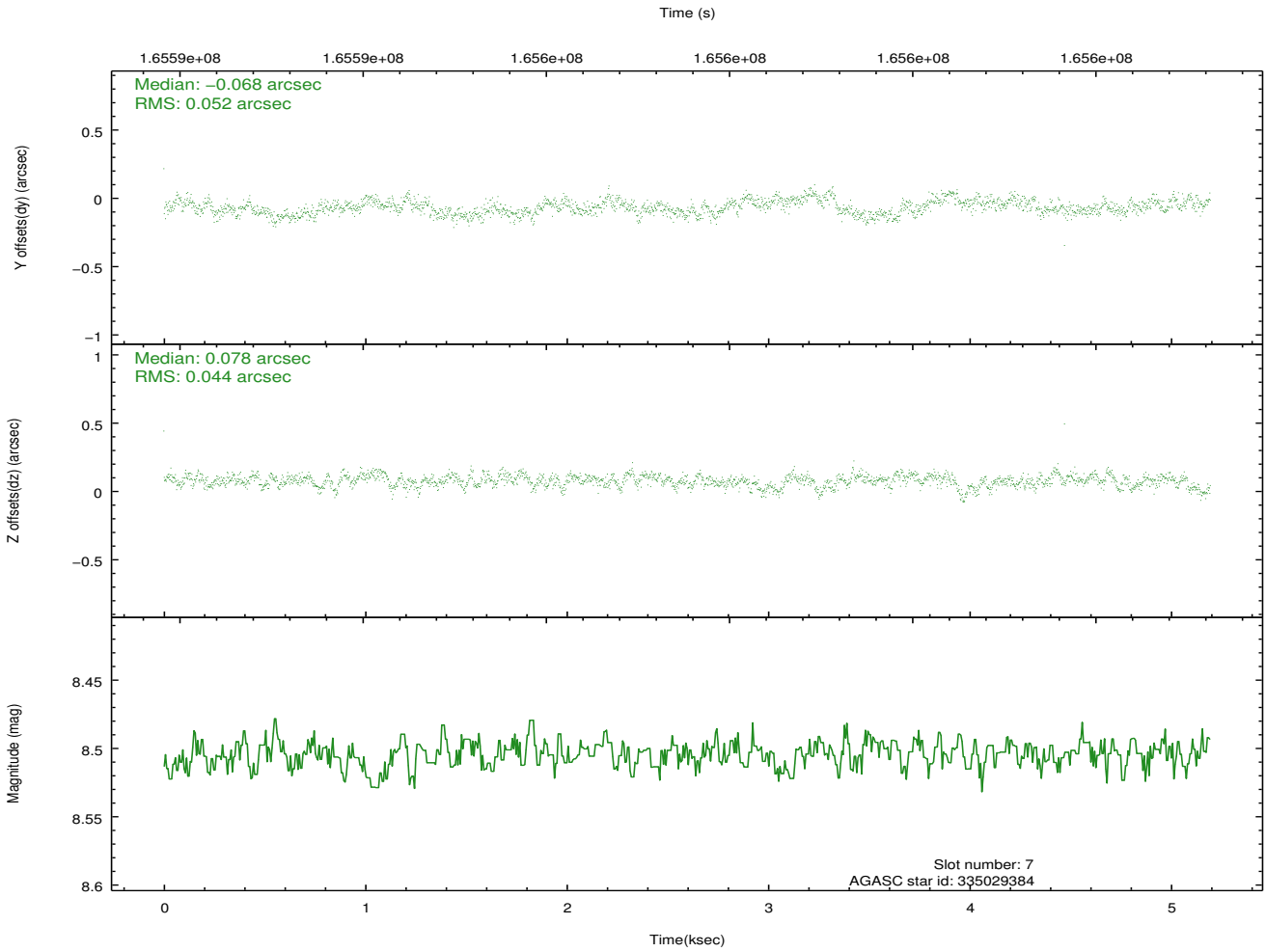
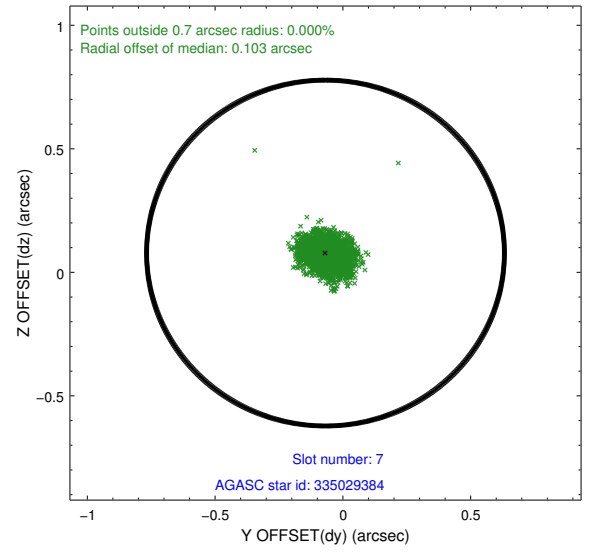
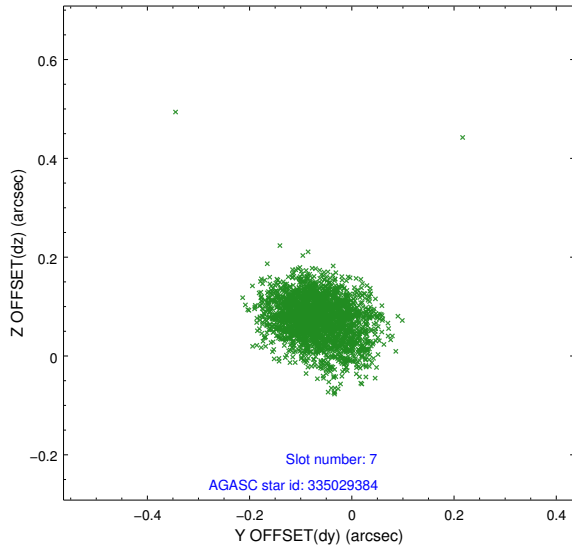


## 2.4.4 Slot 6



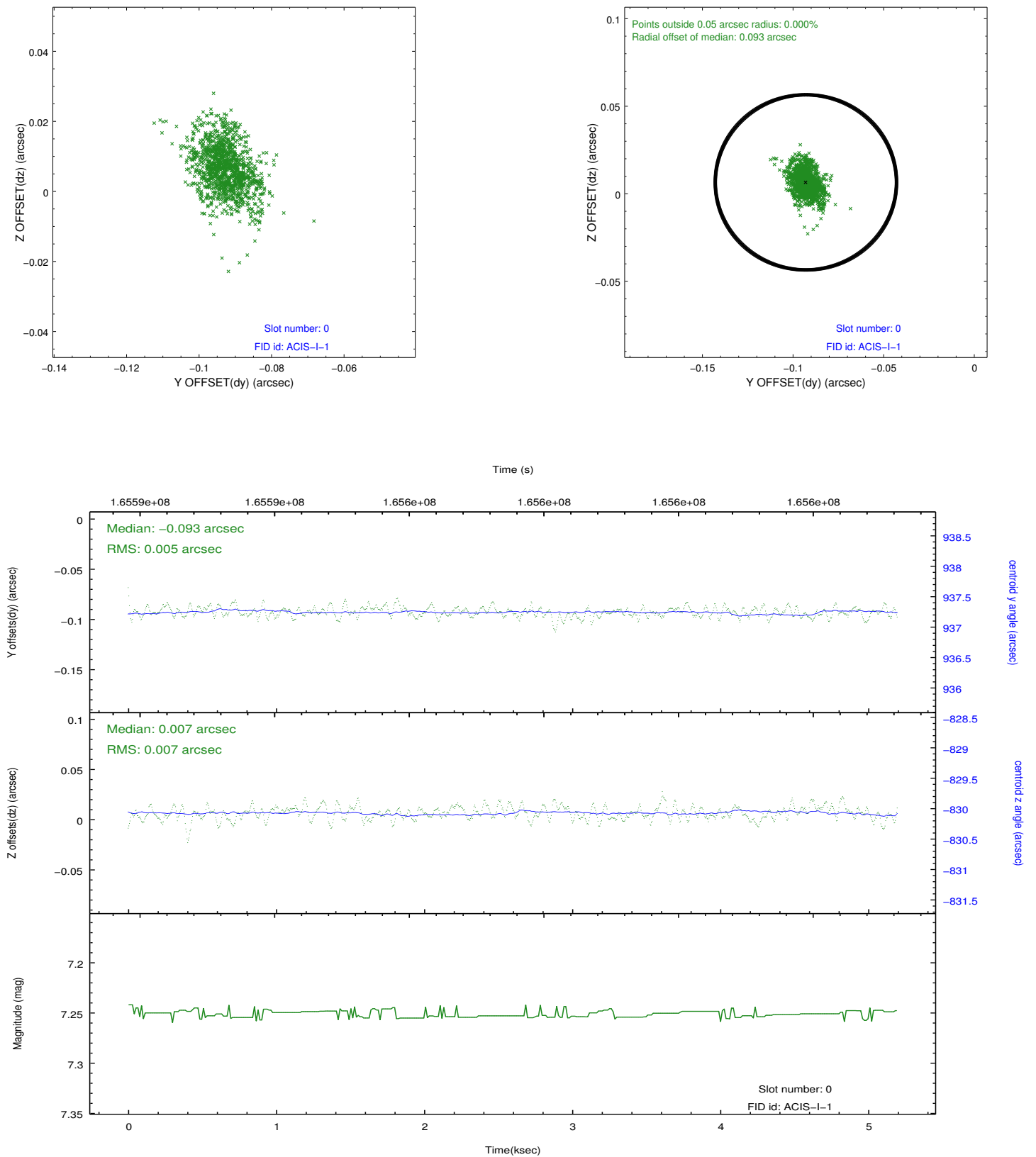


## 2.4.5 Slot 7

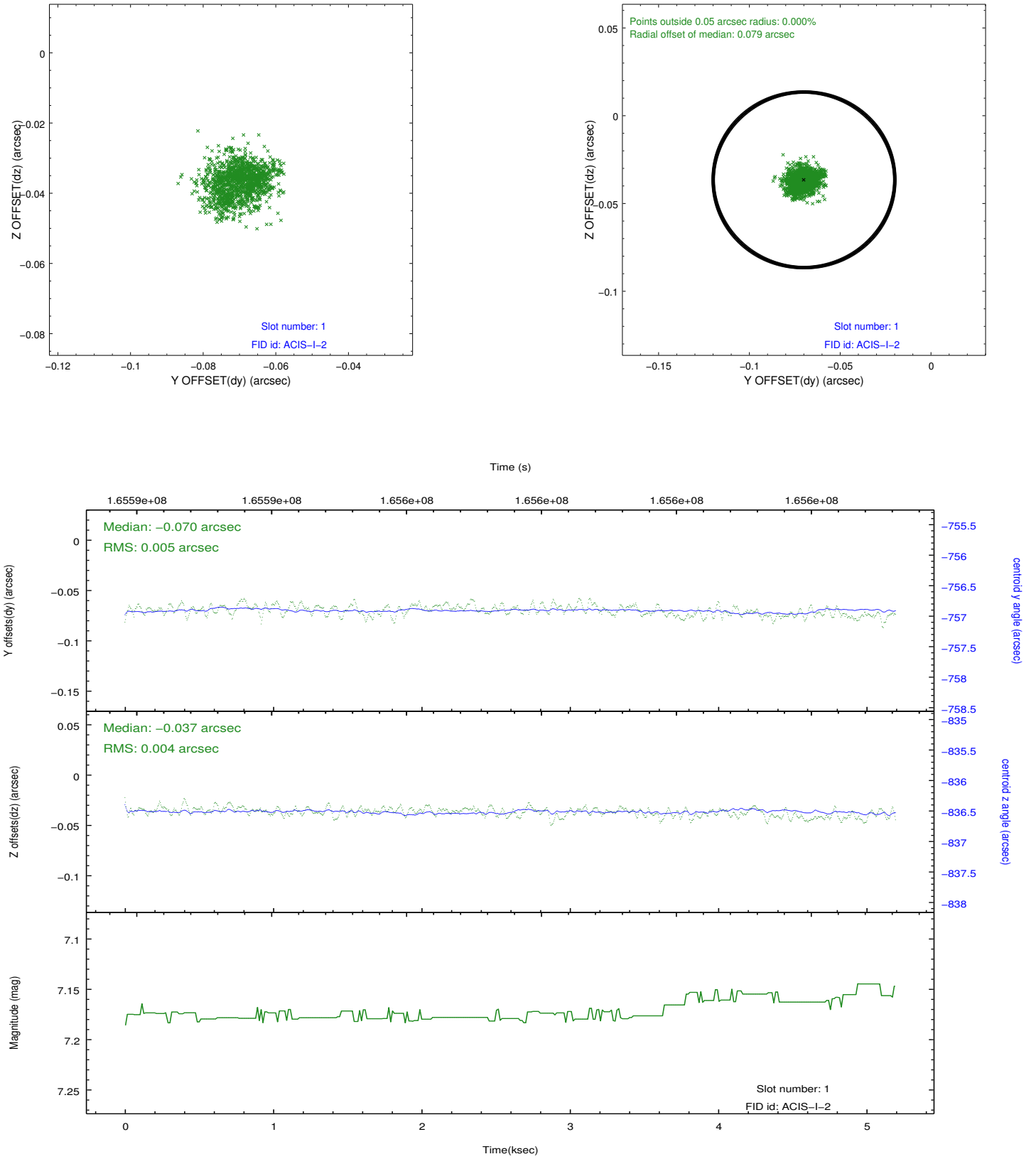


## 2.5 FID Slots

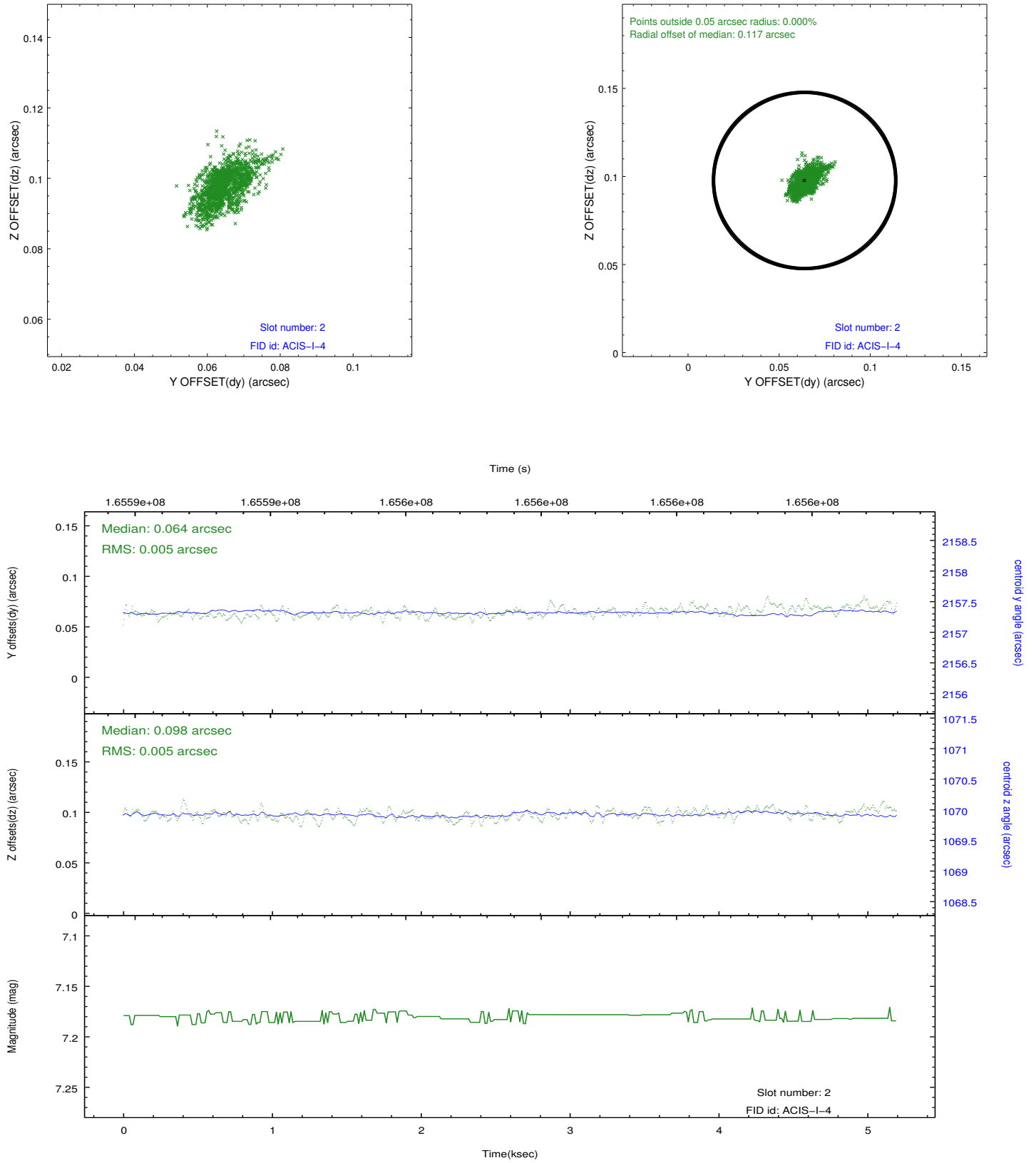
### 2.5.1 Slot 0



## 2.5.2 Slot 1



### 2.5.3 Slot 2



## A Summary

### A.1 Status

V&V Scientist	Jen Lauer
V&V Date (YYYY-MM-DD)	2012.11.09
V&V Edition	1
V&V Disposition and Status	OK
V&V Charge Time	4.773

### A.2 Comments