

V&V Reference Report

L2 ASCDS Version : 7.6.8

Observation 4274 - L2 Version 001
Chandra X-Ray Center

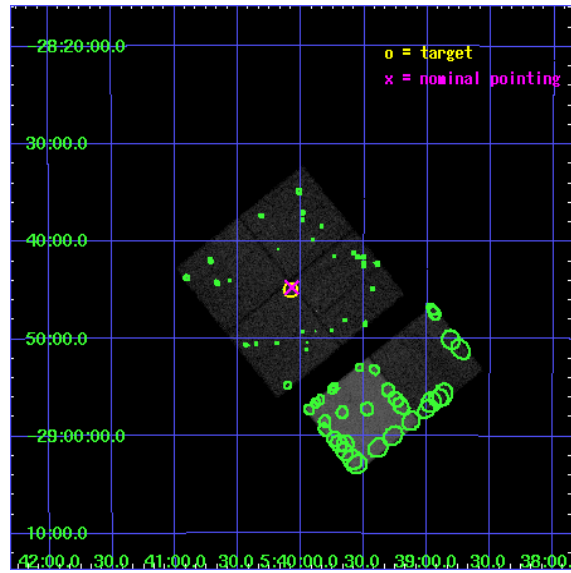
L2 Processing Date : Jul 14 2006

Contents

1	Front	2
2	OBI	3
2.1	OBI	3
2.1.1	Images	3
2.1.2	Bias	3
2.1.3	Parameters	4
2.1.4	Events	4
2.2	Compared Parameters	5
2.3	Aspect	6
2.4	Star Slots	9
2.4.1	Slot 3	9
2.4.2	Slot 4	10
2.4.3	Slot 5	11
2.4.4	Slot 6	12
2.4.5	Slot 7	13
2.5	FID Slots	14
2.5.1	Slot 0	14
2.5.2	Slot 1	15
2.5.3	Slot 2	16
3	Point Sources	17
A	Summary	18
A.1	Status	18
A.2	Comments	18

1 Front

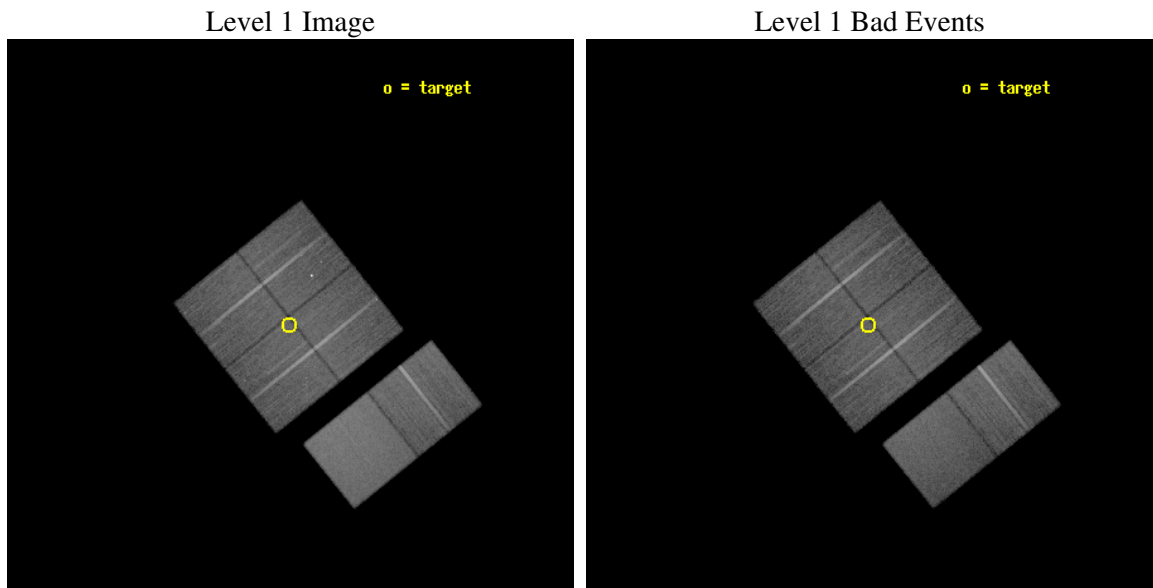
seq_num	900317
obs_id	4274
title	CHASING QUASAR 2
observer	Dr. Fabrizio Fiore
object	PKS0537-28_2
dtcycle	0
cycle	P
ra_targ	85.020833
dec_targ	-28.75
ra_nom	85.018328723489
dec_nom	-28.745938667521
roll_nom	141.32615103166
revision	2
ontime	30182.399887562
livetime	29800.212166526
ontime0	30175.917907208
ontime1	30172.676996768
ontime2	30166.195006371
ontime3	30182.399887562
ontime6	30172.676936924
ontime7	30179.1589472
l2events	201867



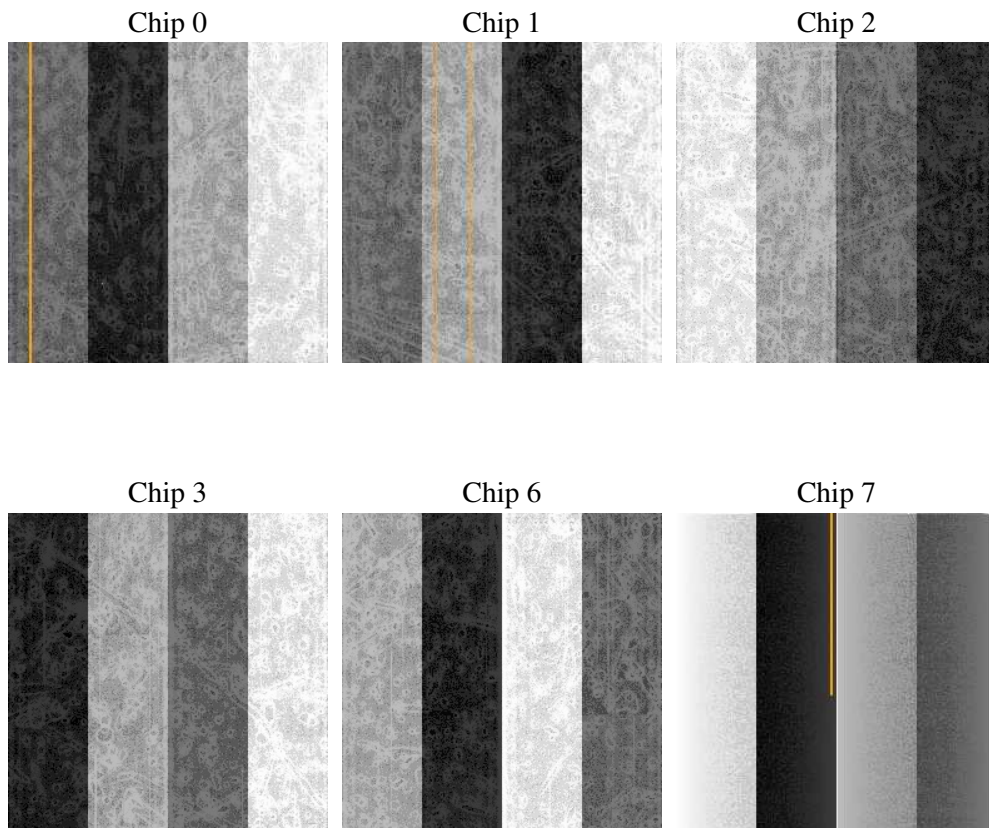
2 OBI

2.1 OBI

2.1.1 Images



2.1.2 Bias



2.1.3 Parameters

obi_num	0
ascdsver	7.6.8
caldsver	3.2.2
date	2006-07-14T15:04:06
revision	2

sched_exp_time	30000.000000
ontime	30215.848398656
ontime0	30209.366448194
ontime1	30206.125537753
ontime2	30199.643517464
ontime3	30215.848398656
ontime6	30206.12547791
ontime7	30212.607488185
l1events	1152363

2.1.4 Events

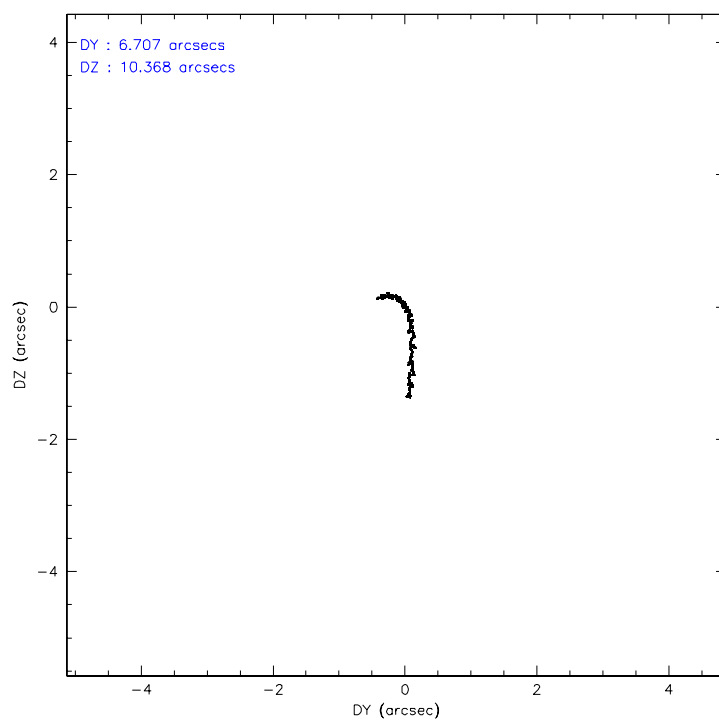
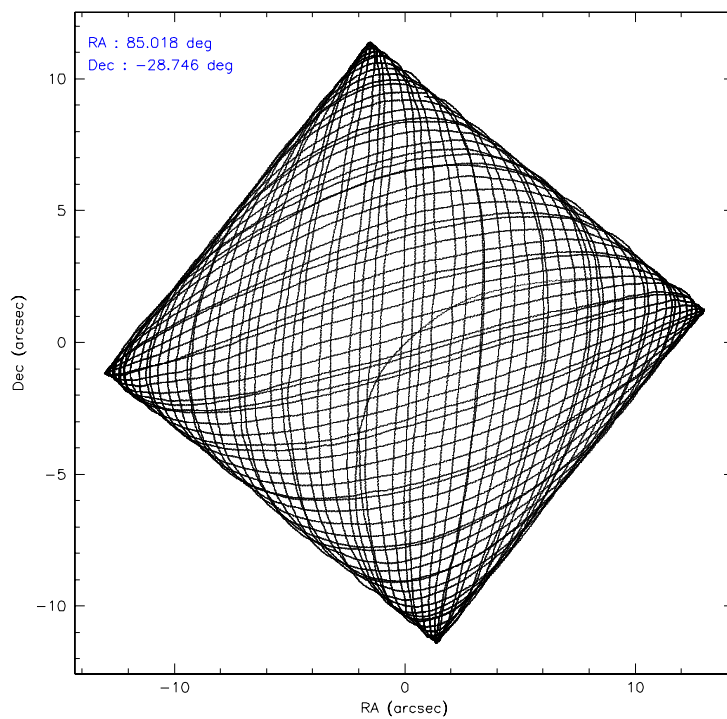
	ccd 0	ccd 1	ccd 2	ccd 3	ccd 6	ccd 7
level 1 events	172760	169723	182337	178123	193943	255477
rejected events	145790	146597	159316	155973	170917	154254
rejected %	84%	86%	87%	87%	88%	60%

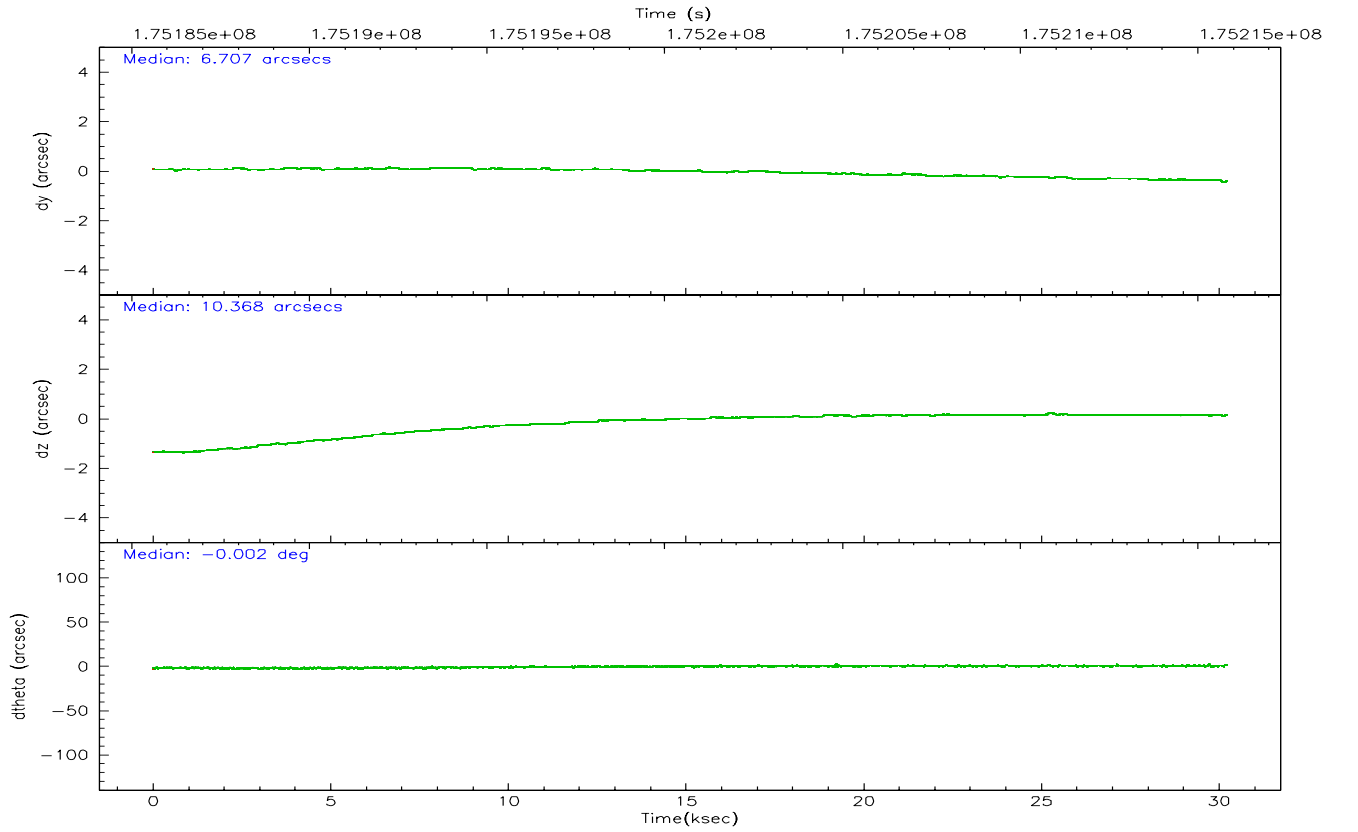
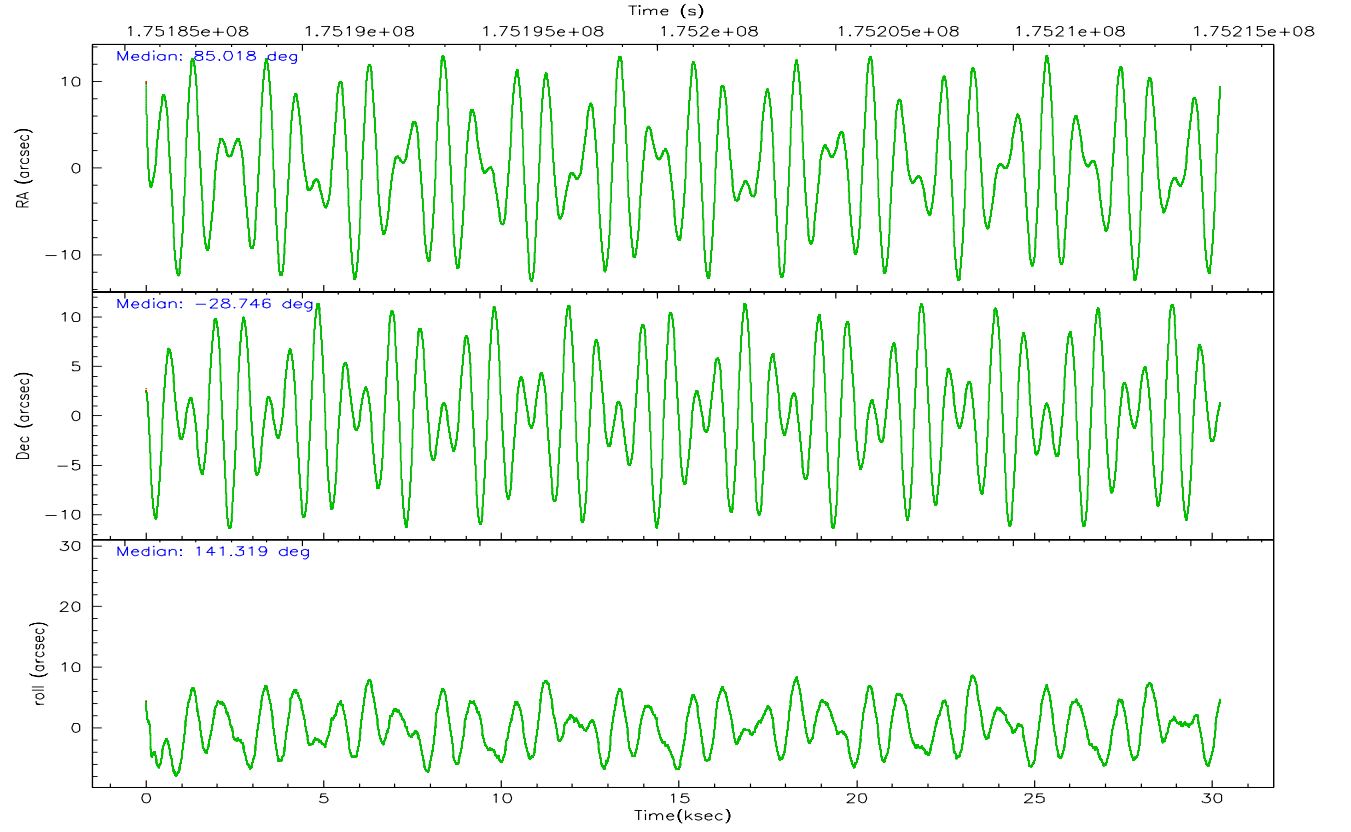
	ccd 0	ccd 1	ccd 2	ccd 3	ccd 6	ccd 7
grade 0 events	13091	9135	10627	10016	9438	6444
	7%	5%	5%	5%	4%	2%
grade 1 events	160	87	94	106	96	147
	0%	0%	0%	0%	0%	0%
grade 2 events	5102	4913	4484	4171	4634	24657
	2%	2%	2%	2%	2%	9%
grade 3 events	2483	2272	2142	2129	2114	5164
	1%	1%	1%	1%	1%	2%
grade 4 events	2233	2341	2132	2068	2186	5150
	1%	1%	1%	1%	1%	2%
grade 5 events	7332	7710	7305	8073	8659	16914
	4%	4%	4%	4%	4%	6%
grade 6 events	4088	4490	3662	3790	4674	59915
	2%	2%	2%	2%	2%	23%
grade 7 events	138271	138775	151891	147770	162142	137086
	80%	81%	83%	82%	83%	53%

2.2 Compared Parameters

Parameter	Planned	Actual	Parameter	Planned	Actual
Instrument	ACIS	ACIS	Obspar format version number	6	6
Detector	ACIS-012367	ACIS-012367	Obspar file type	PREDICTED	ACTUAL
Grating	NONE	NONE	Obspar update status	NONE	UPDATED
Data mode	VFAINT	VFAINT	On-chip summing requested	N	N
Observation mode	POINTING	POINTING	Subarray requested	NONE	NONE
Pointing RA	85.049217	85.01832872348851	Alternating exposures requested	N	N
Pointing Dec	-28.749940	-28.7459386675207	Primary exposure time	0.000000	3.2
Pointing Roll	141.132323	141.3261510316582			
SIM focus pos (mm)	-0.782348	-0.7809083437167272			
SIM defocus (mm)	0	0.001439871863259334			
SIM translation stage pos (mm)	-233.592463	-233.5874344608287			
SIM translation stage offset (mm)	0	-0.005018542100998502			
Observation start time	175185788.184000	175184704.04018			
Observation start date	2003-07-21T14:42:04	2003-07-21T14:25:04			
Observation end time	175215788.184000	175216143.86652			
Observation end date	2003-07-21T23:02:04	2003-07-21T23:09:03			
Read mode	TIMED	TIMED			

2.3 Aspect



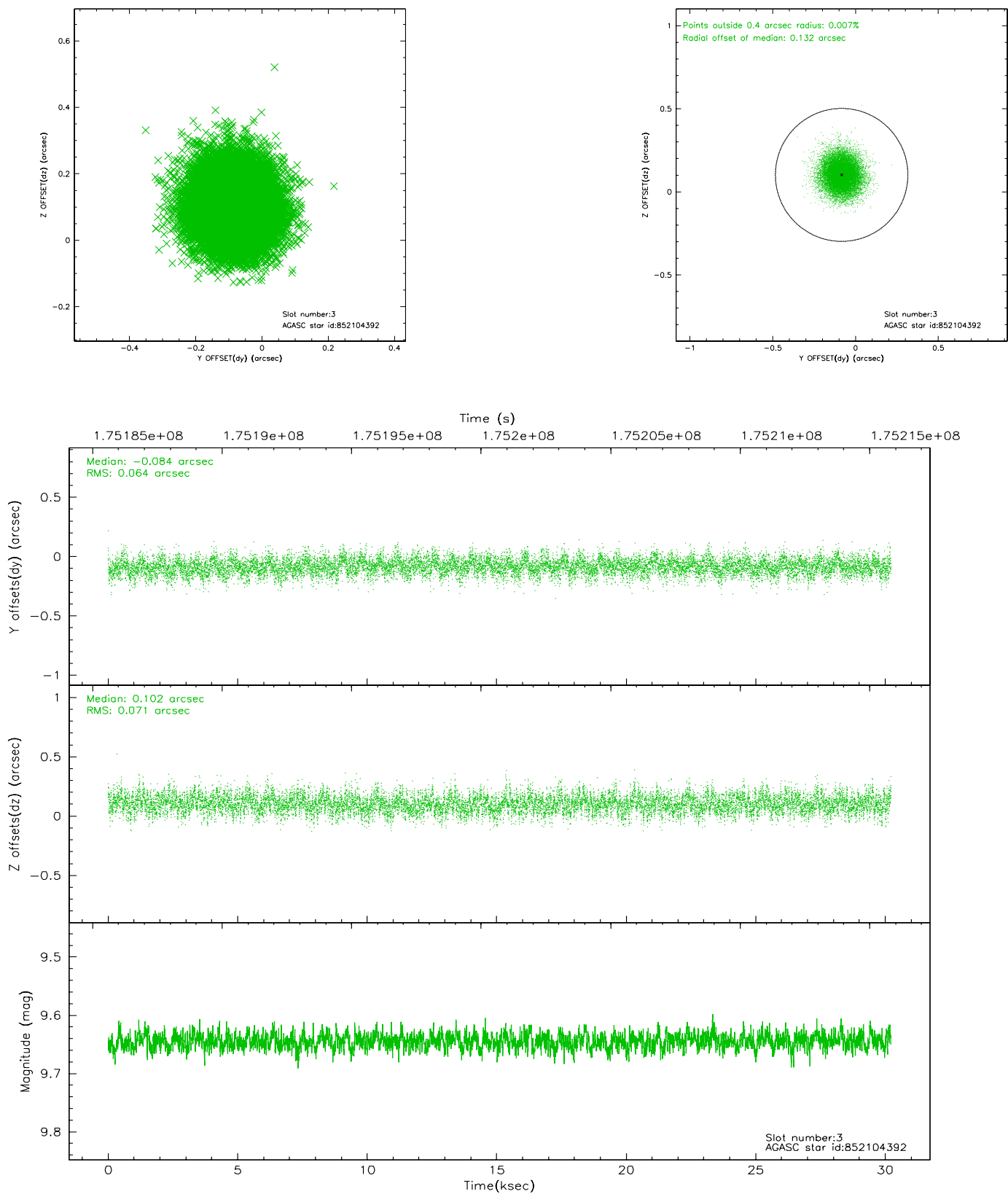


Slot Statistics

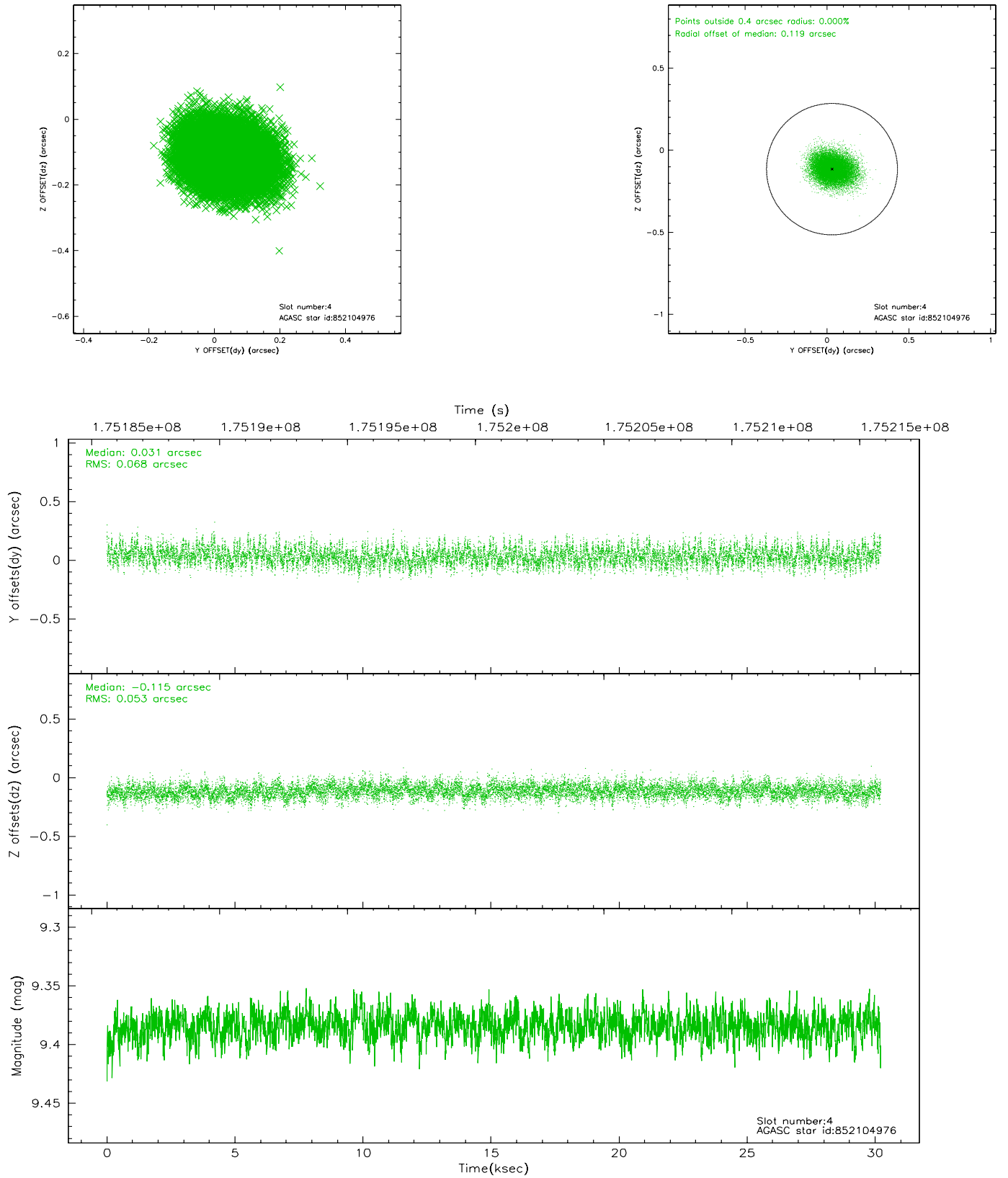
slot	status	id	mag	n_pts	med_dy	med_dz	dr1	dr2	ra	dec	mean_y	mean_z
0	FID	ACIS-I-1	7.24	7370	-0.006	0.028	0.014	0.061	0.000000	0.000000	933.02	-833.58
1	FID	ACIS-I-5	7.23	7370	-0.108	0.029	0.011	0.023	0.000000	0.000000	-1815.13	1063.88
2	FID	ACIS-I-6	7.25	7370	0.026	0.011	0.014	0.044	0.000000	0.000000	398.54	1708.43
3	GUIDE	852104392	9.64	14730	-0.084	0.102	0.102	0.165	84.801236	-28.156754	1952.66	-1167.62
4	GUIDE	852104976	9.38	14733	0.031	-0.115	0.091	0.150	85.108230	-29.481713	-1797.07	1934.95
5	GUIDE	852106712	9.38	14736	-0.075	0.099	0.089	0.147	85.194465	-28.273363	718.19	-1624.08
6	GUIDE	852108824	8.14	14738	-0.006	-0.085	0.068	0.106	84.638223	-28.836492	812.49	1057.74
7	GUIDE	852108960	9.34	14734	0.130	-0.003	0.089	0.145	85.052256	-29.099645	-797.19	974.38

2.4 Star Slots

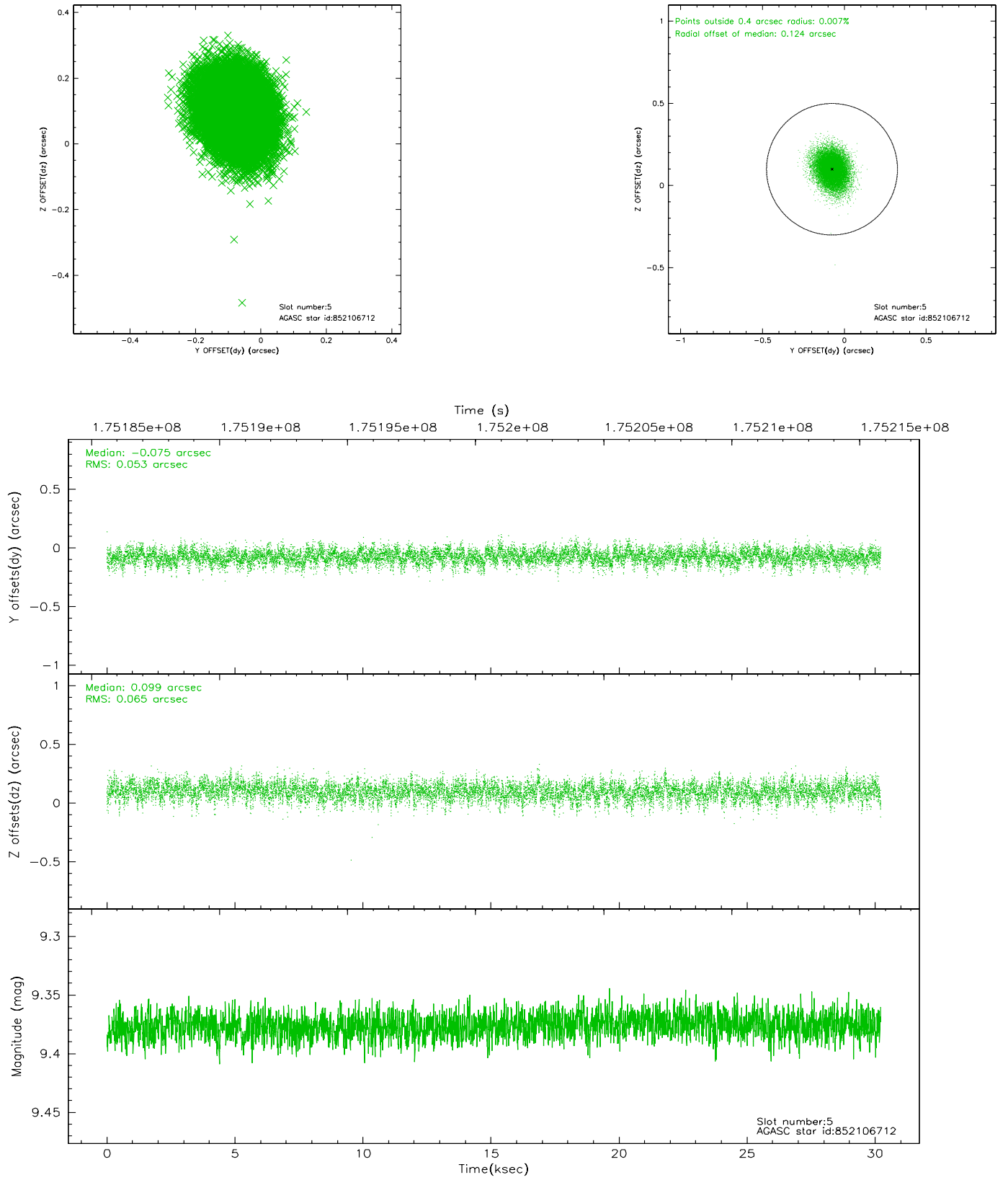
2.4.1 Slot 3



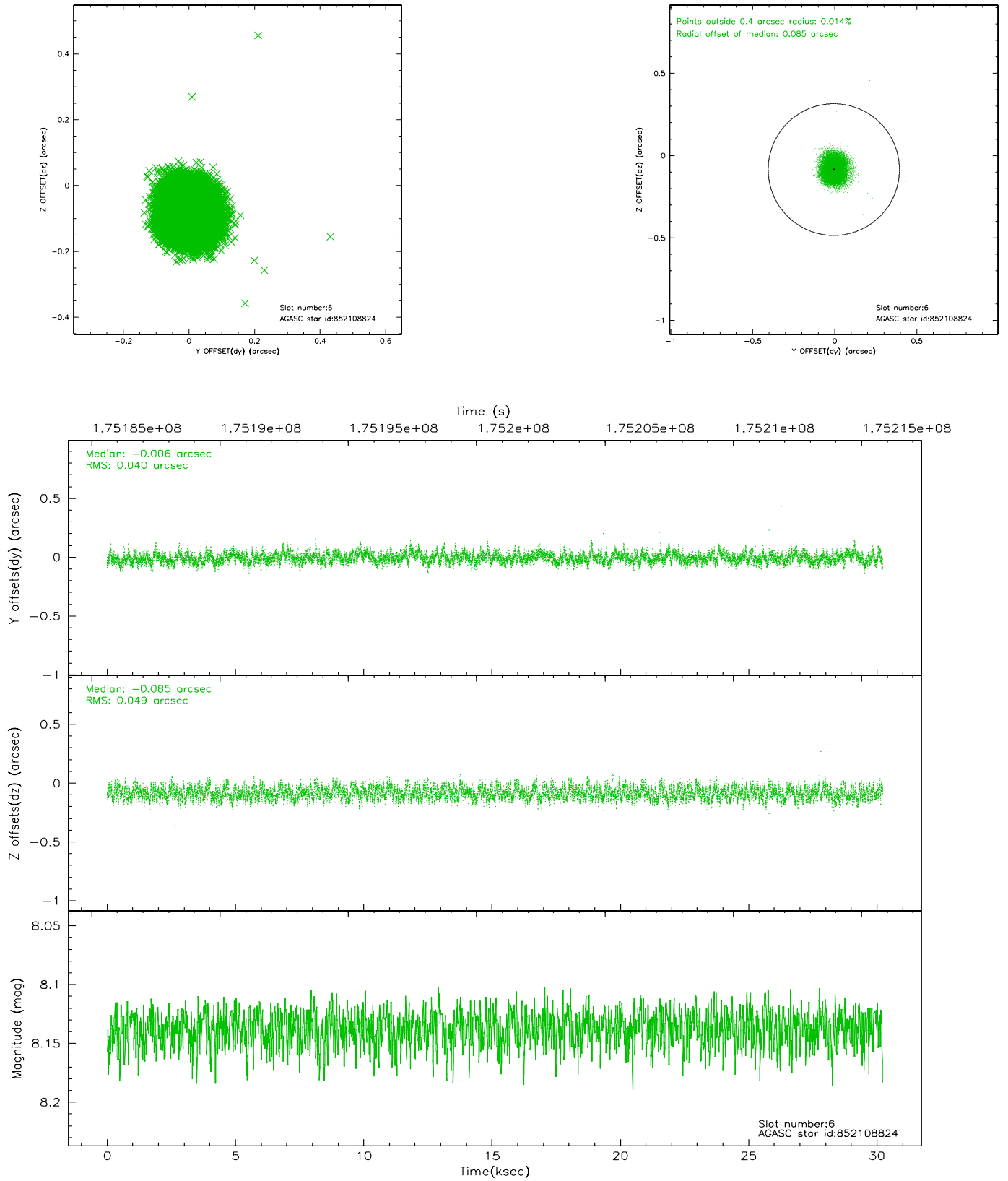
2.4.2 Slot 4



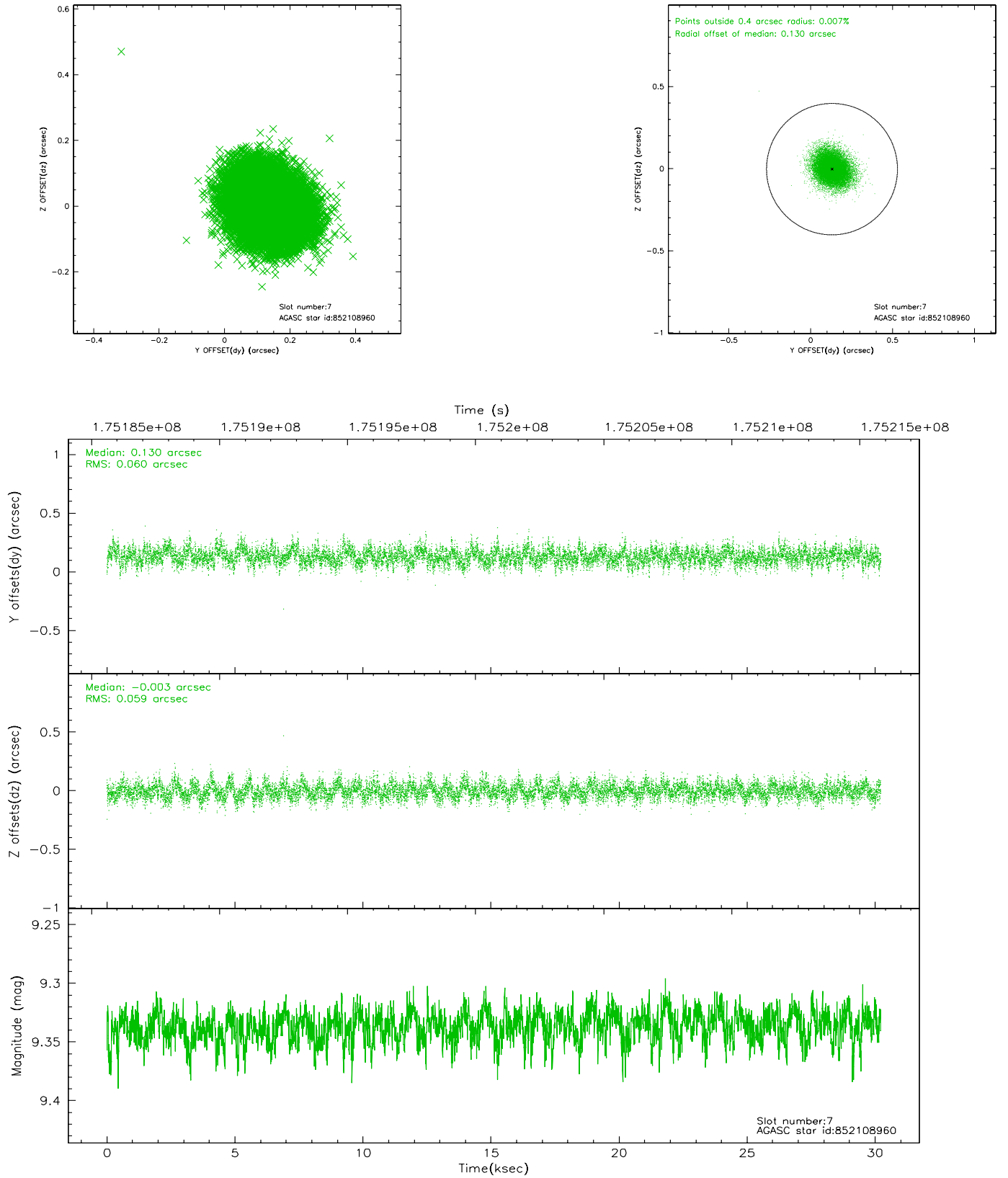
2.4.3 Slot 5



2.4.4 Slot 6

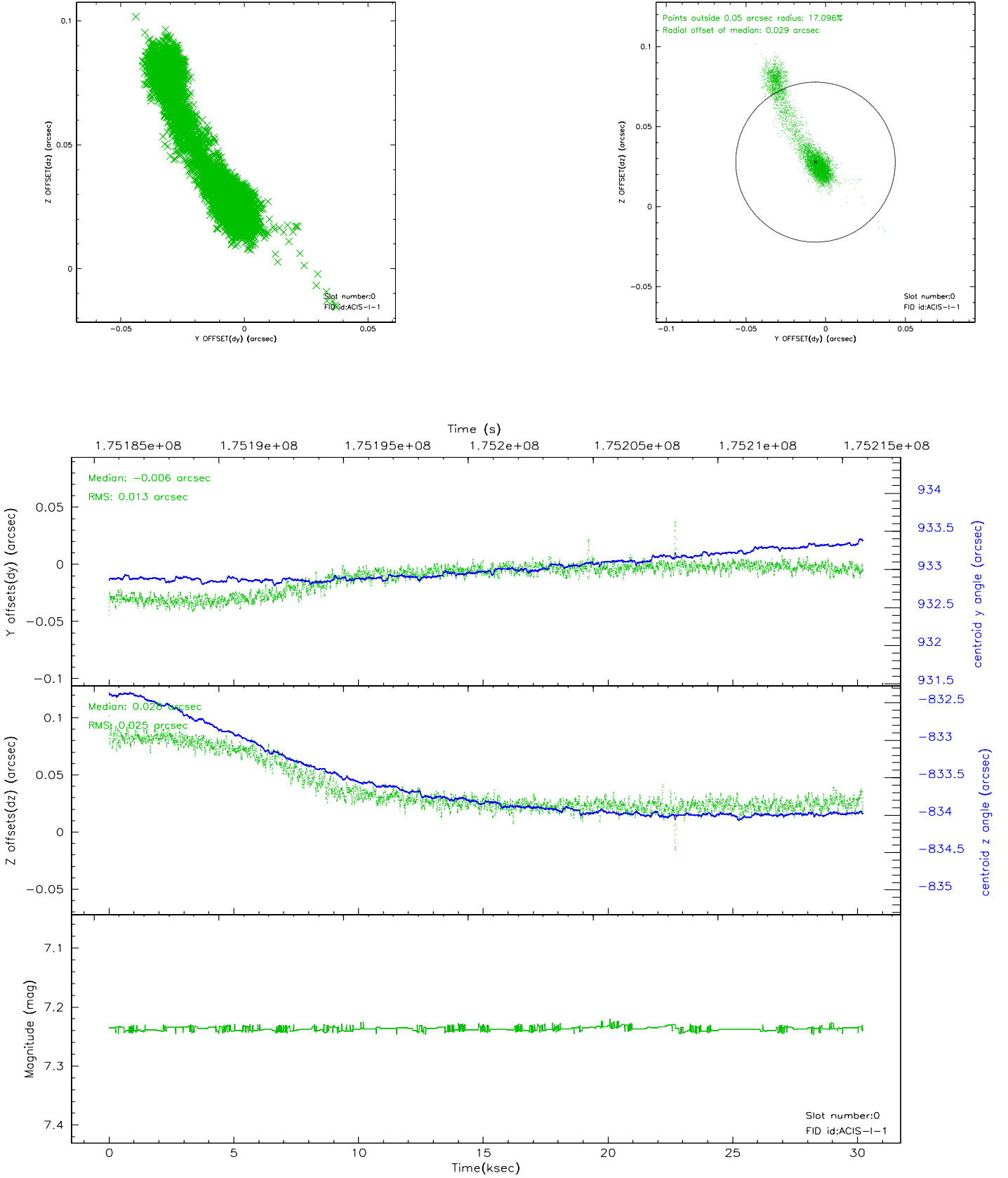


2.4.5 Slot 7

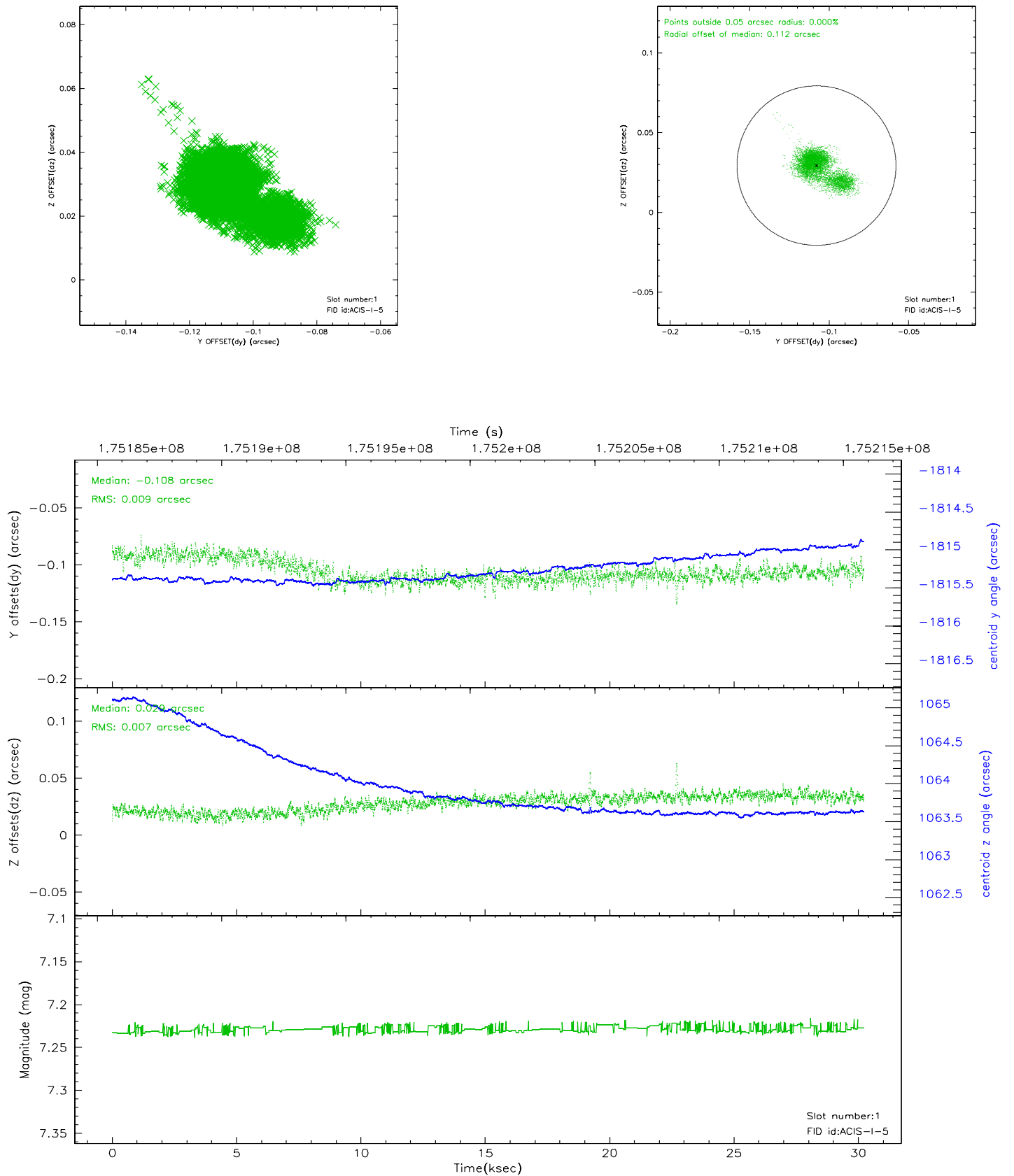


2.5 FID Slots

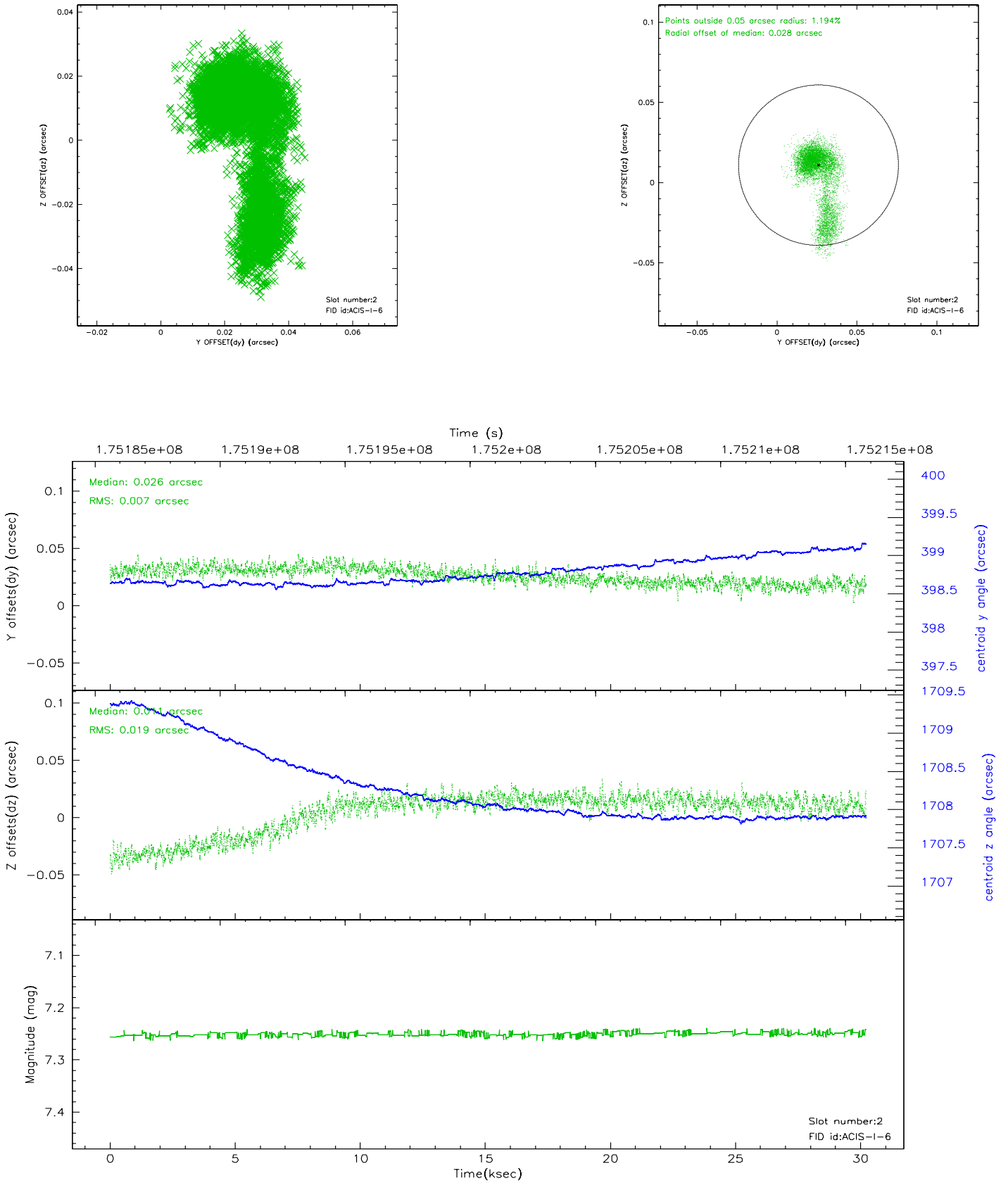
2.5.1 Slot 0



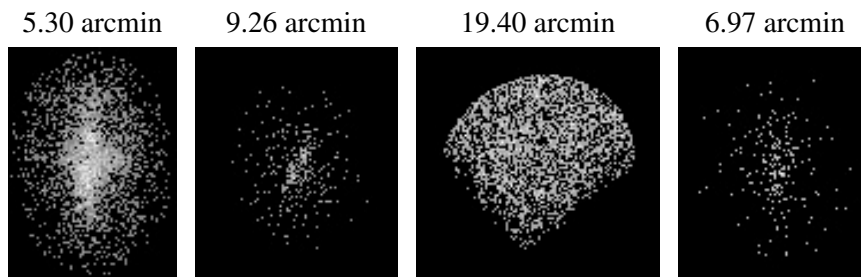
2.5.2 Slot 1



2.5.3 Slot 2



3 Point Sources



A Summary

A.1 Status

V&V Scientist	Beth Sundheim
V&V Date (YYYY-MM-DD)	2006.07.14
V&V Edition	1
V&V Disposition and Status	OK
V&V Charge Time	30.182

A.2 Comments