

V&V Reference Report

L2 ASCDS Version : 7.6.8

Observation 4273 - L2 Version 001
Chandra X-Ray Center

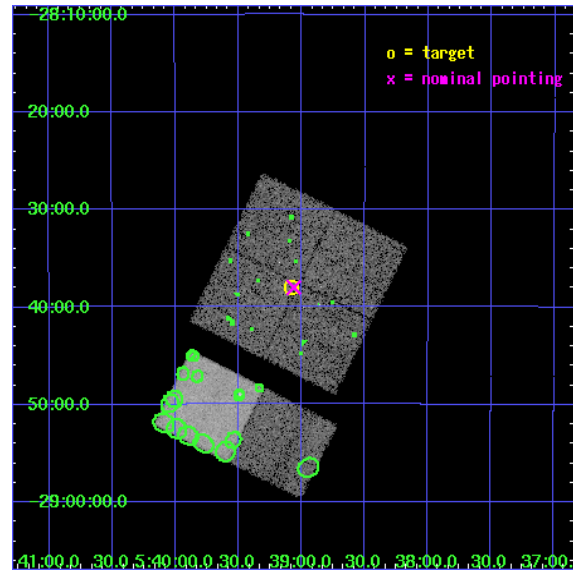
L2 Processing Date : Aug 3 2006

Contents

1	Front	2
2	OBI	3
2.1	OBI	3
2.1.1	Images	3
2.1.2	Bias	3
2.1.3	Parameters	4
2.1.4	Events	4
2.2	Compared Parameters	5
2.3	Aspect	6
2.4	Star Slots	9
2.4.1	Slot 3	9
2.4.2	Slot 4	10
2.4.3	Slot 5	11
2.4.4	Slot 6	12
2.4.5	Slot 7	13
2.5	FID Slots	14
2.5.1	Slot 0	14
2.5.2	Slot 1	15
2.5.3	Slot 2	16
3	Point Sources	17
A	Summary	18
A.1	Status	18
A.2	Comments	18

1 Front

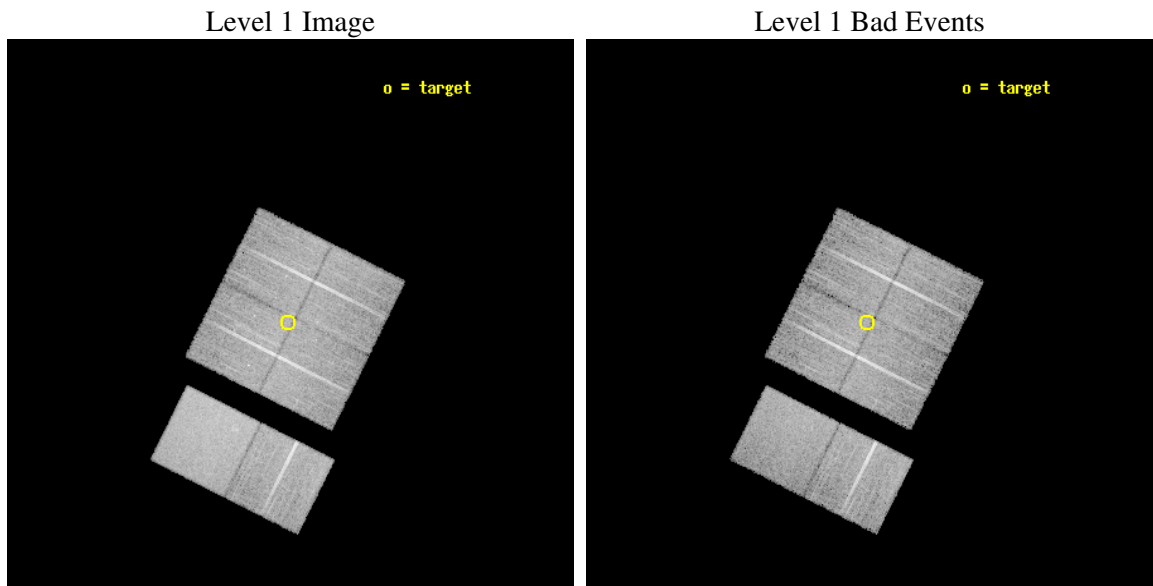
seq_num	900316
obs_id	4273
title	CHASING QUASAR 2
observer	Dr. Fabrizio Fiore
object	PKS0537-28_1
dtcycle	0
cycle	P
ra_targ	84.770833
dec_targ	-28.633333
ra_nom	84.765562259388
dec_nom	-28.633582438042
roll_nom	206.53945454579
revision	2
ontime	14963.158954054
livetime	14773.686425645
ontime0	14966.399944246
ontime1	14966.399944246
ontime2	14963.158954054
ontime3	14963.158954054
ontime6	14966.399944246
ontime7	14966.399944246
l2events	96010



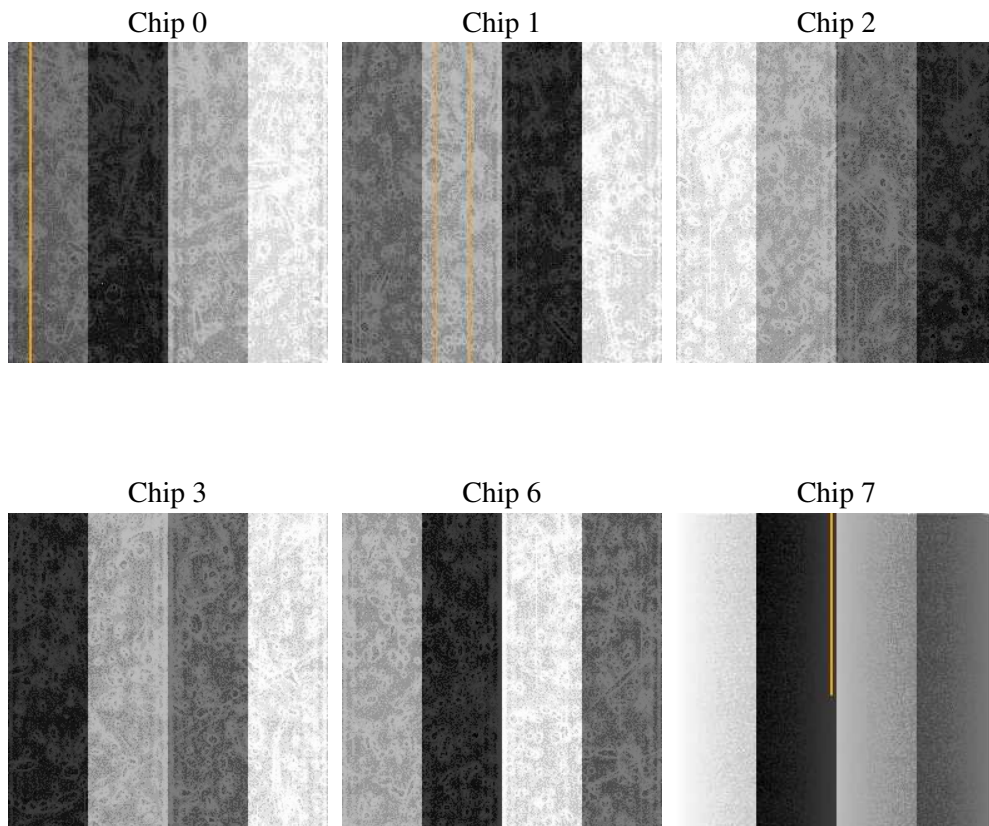
2 OBI

2.1 OBI

2.1.1 Images



2.1.2 Bias



2.1.3 Parameters

obi_num	0
ascdsver	7.6.8
caldbver	3.2.2
date	2006-08-03T02:51:10
revision	2

sched_exp_time	15000.000000
ontime	14966.93775484
ontime0	14970.178745031
ontime1	14970.178745031
ontime2	14966.937774748
ontime3	14966.93775484
ontime6	14970.178764939
ontime7	14970.178764939
l1events	586520

2.1.4 Events

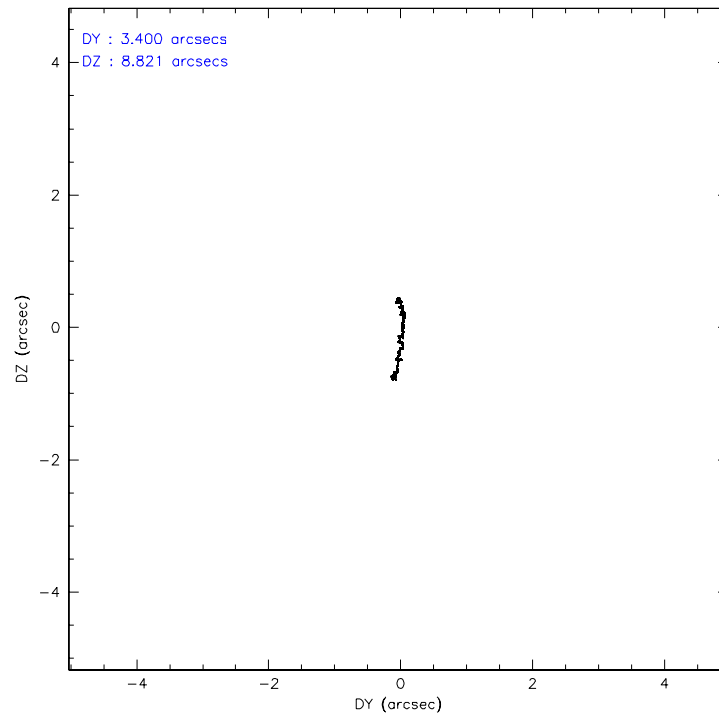
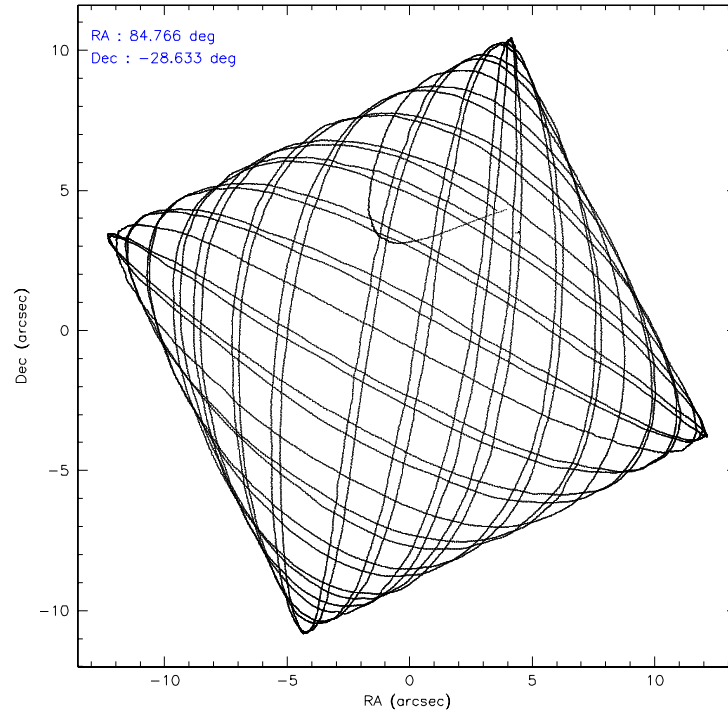
	ccd 0	ccd 1	ccd 2	ccd 3	ccd 6	ccd 7
level 1 events	86833	89418	91977	93235	98729	126328
rejected events	75311	77697	80641	81934	87556	78399
rejected %	86%	86%	87%	87%	88%	62%

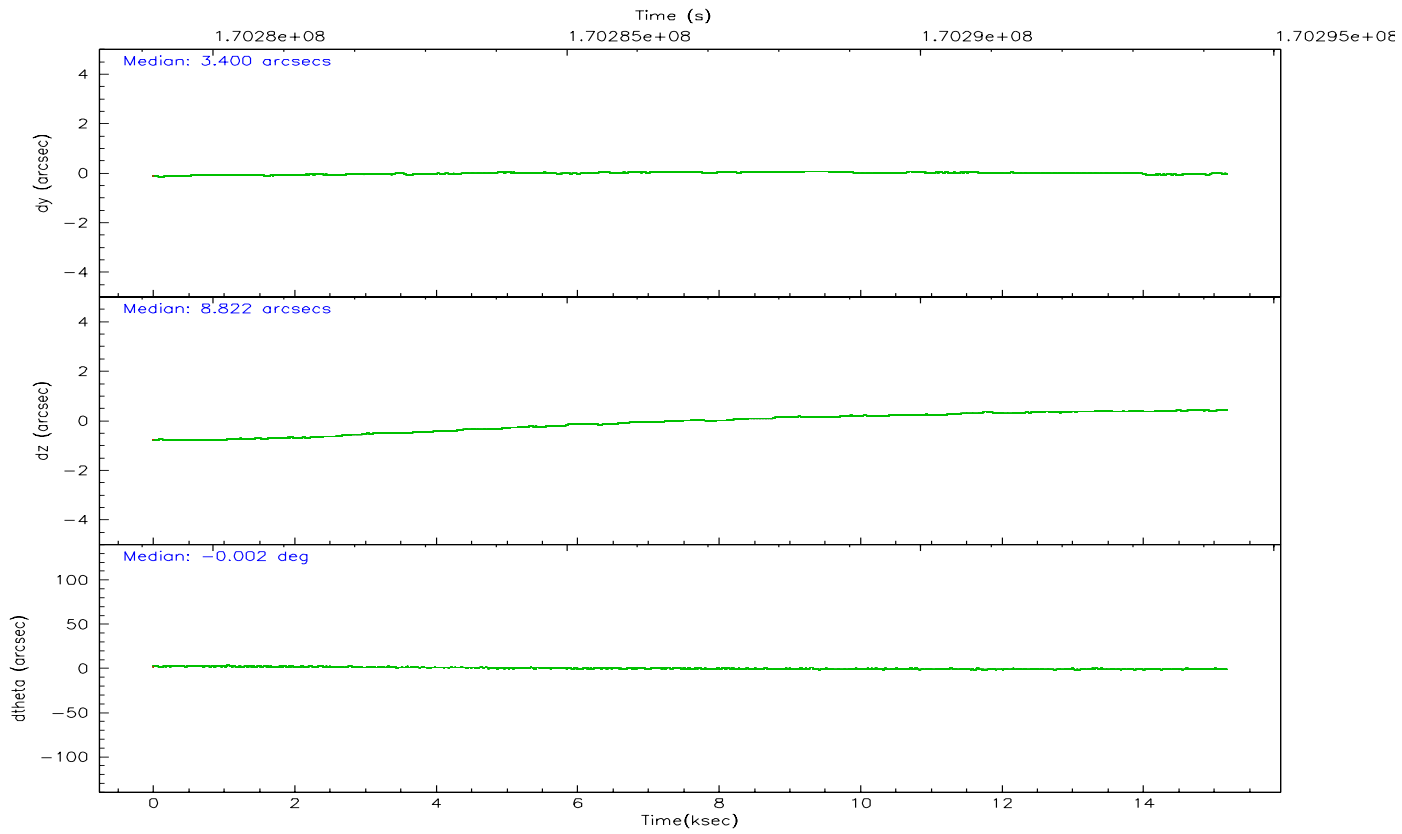
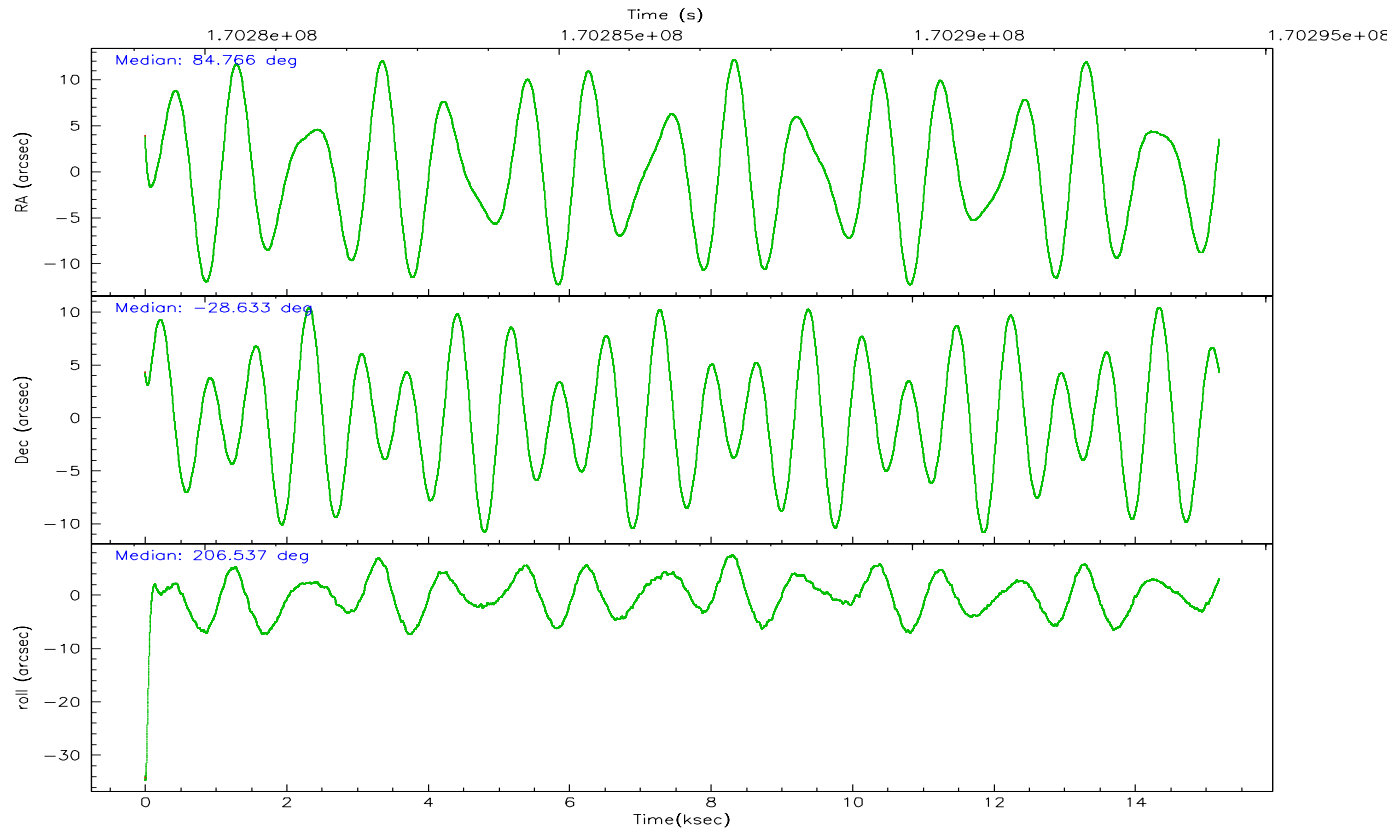
	ccd 0	ccd 1	ccd 2	ccd 3	ccd 6	ccd 7
grade 0 events	5015	4795	5165	5081	4438	2944
	5%	5%	5%	5%	4%	2%
grade 1 events	54	39	53	69	42	86
	0%	0%	0%	0%	0%	0%
grade 2 events	2349	2496	2193	2087	2307	11976
	2%	2%	2%	2%	2%	9%
grade 3 events	1169	1112	1040	1138	1092	2501
	1%	1%	1%	1%	1%	1%
grade 4 events	1021	1161	1139	1124	1064	2438
	1%	1%	1%	1%	1%	1%
grade 5 events	3741	3907	3611	4153	4414	8457
	4%	4%	3%	4%	4%	6%
grade 6 events	1972	2160	1805	1877	2278	28096
	2%	2%	1%	2%	2%	22%
grade 7 events	71512	73748	76971	77706	83094	69830
	82%	82%	83%	83%	84%	55%

2.2 Compared Parameters

Parameter	Planned	Actual	Parameter	Planned	Actual
Instrument	ACIS	ACIS	Obspar format version number	6	6
Detector	ACIS-012367	ACIS-012367	Obspar file type	PREDICTED	ACTUAL
Grating	NONE	NONE	Obspar update status	NONE	UPDATED
Data mode	VFAINT	VFAINT	On-chip summing requested	N	N
Observation mode	POINTING	POINTING	Subarray requested	NONE	NONE
Pointing RA	84.782659	84.76556225938829	Alternating exposures requested	N	N
Pointing Dec	-28.610716	-28.63358243804234	Primary exposure time	0.000000	3.2
Pointing Roll	206.338996	206.5394545457916			
SIM focus pos (mm)	-0.782348	-0.7809083437167272			
SIM defocus (mm)	0	0.001439871863259334			
SIM translation stage pos (mm)	-233.592463	-233.5874344608287			
SIM translation stage offset (mm)	0	-0.005018542100998502			
Observation start time	170279337.184000	170278369.6441			
Observation start date	2003-05-25T19:47:53	2003-05-25T19:32:49			
Observation end time	170294337.184000	170295166.31981			
Observation end date	2003-05-25T23:57:53	2003-05-26T00:12:46			
Read mode	TIMED	TIMED			

2.3 Aspect



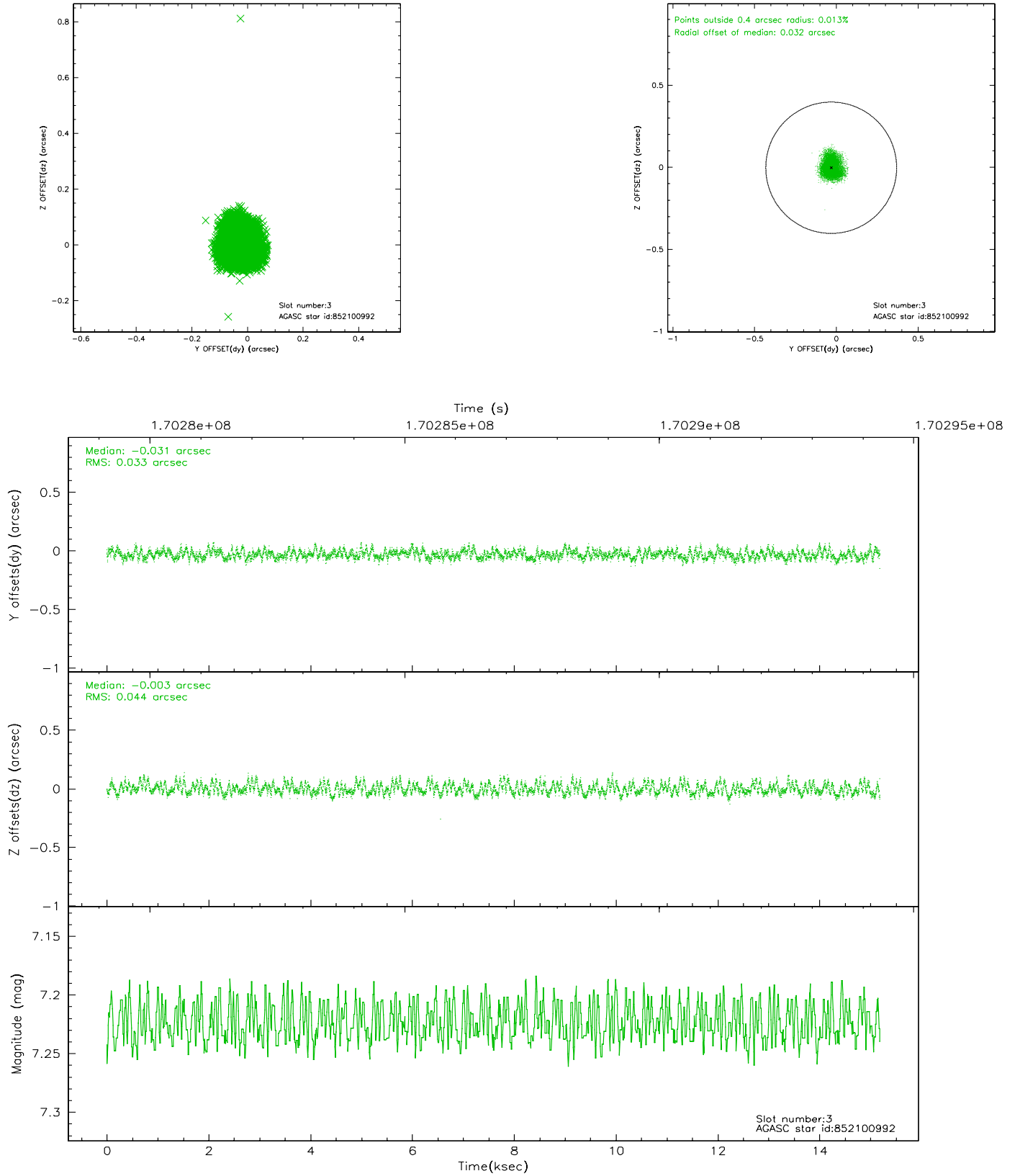


Slot Statistics

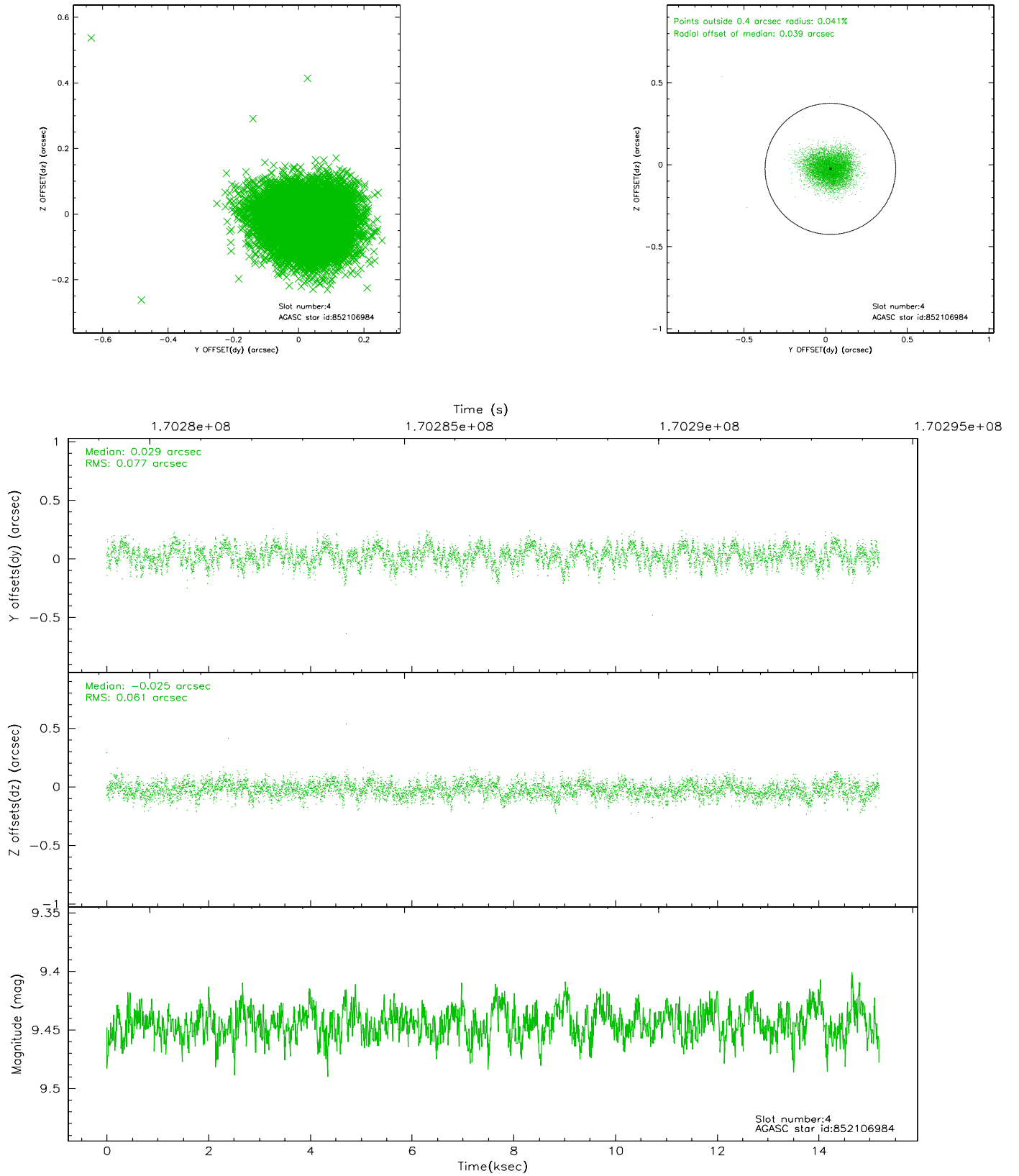
slot	status	id	mag	n_pts	med_dy	med_dz	dr1	dr2	ra	dec	mean_y	mean_z
0	FID	ACIS-I-1	7.24	3706	-0.031	0.082	0.012	0.023	0.000000	0.000000	936.36	-832.09
1	FID	ACIS-I-5	7.23	3706	-0.070	0.026	0.011	0.017	0.000000	0.000000	-1811.63	1065.19
2	FID	ACIS-I-6	7.25	3705	0.010	-0.038	0.011	0.020	0.000000	0.000000	401.62	1709.97
3	GUIDE	852100992	7.22	7411	-0.031	-0.003	0.059	0.091	84.461225	-28.937358	1430.05	606.24
4	GUIDE	852106984	9.44	7405	0.029	-0.025	0.106	0.167	85.449615	-28.768754	-1630.80	1449.39
5	GUIDE	852108824	8.15	7405	0.067	0.084	0.053	0.085	84.638223	-28.836492	768.99	527.15
6	GUIDE	851579176	9.50	7408	-0.095	-0.029	0.101	0.162	85.024532	-27.739397	-2081.86	-2468.17
7	GUIDE	851581920	7.02	7410	0.031	-0.027	0.046	0.076	85.244897	-27.952156	-2368.02	-1470.07

2.4 Star Slots

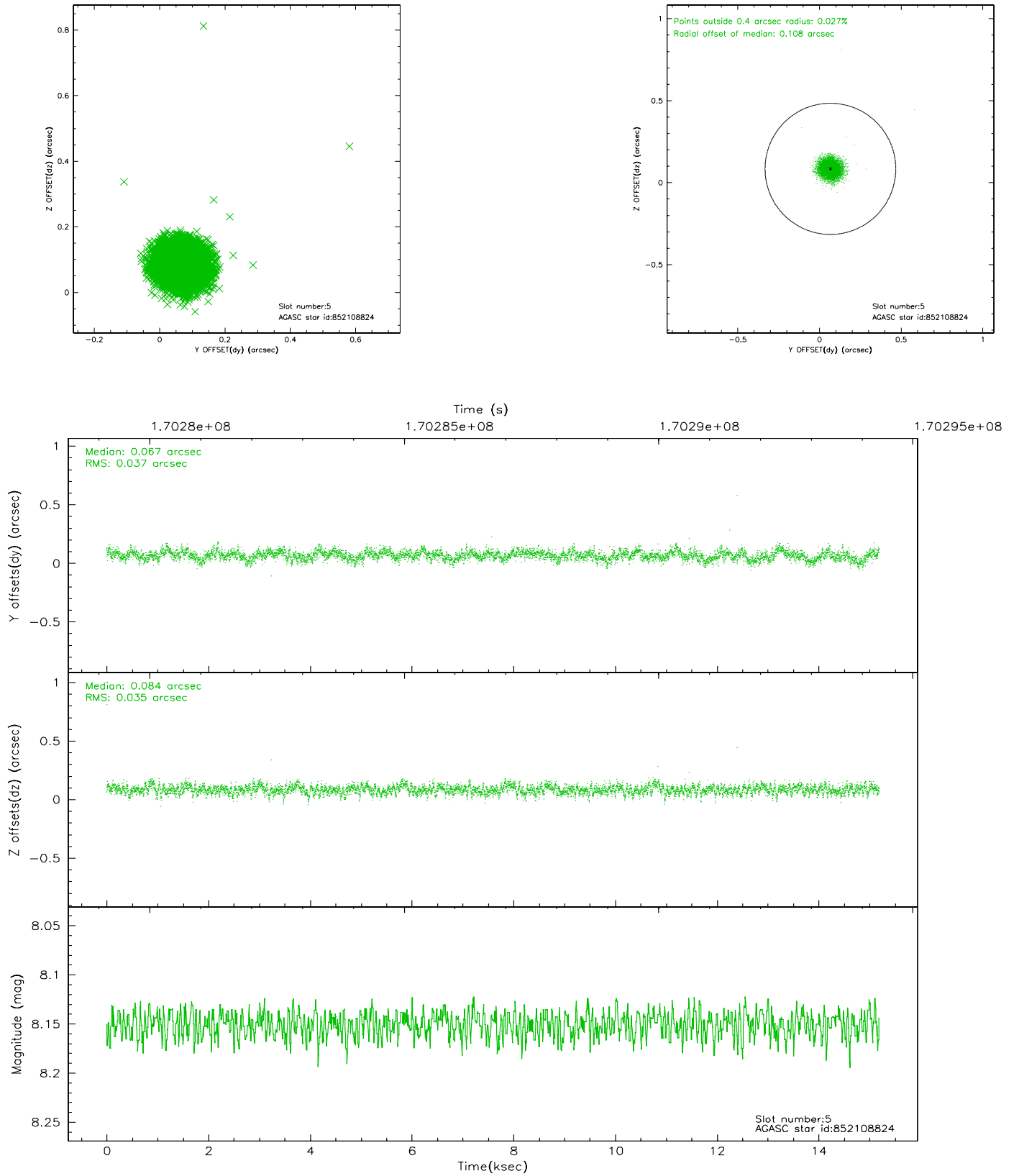
2.4.1 Slot 3



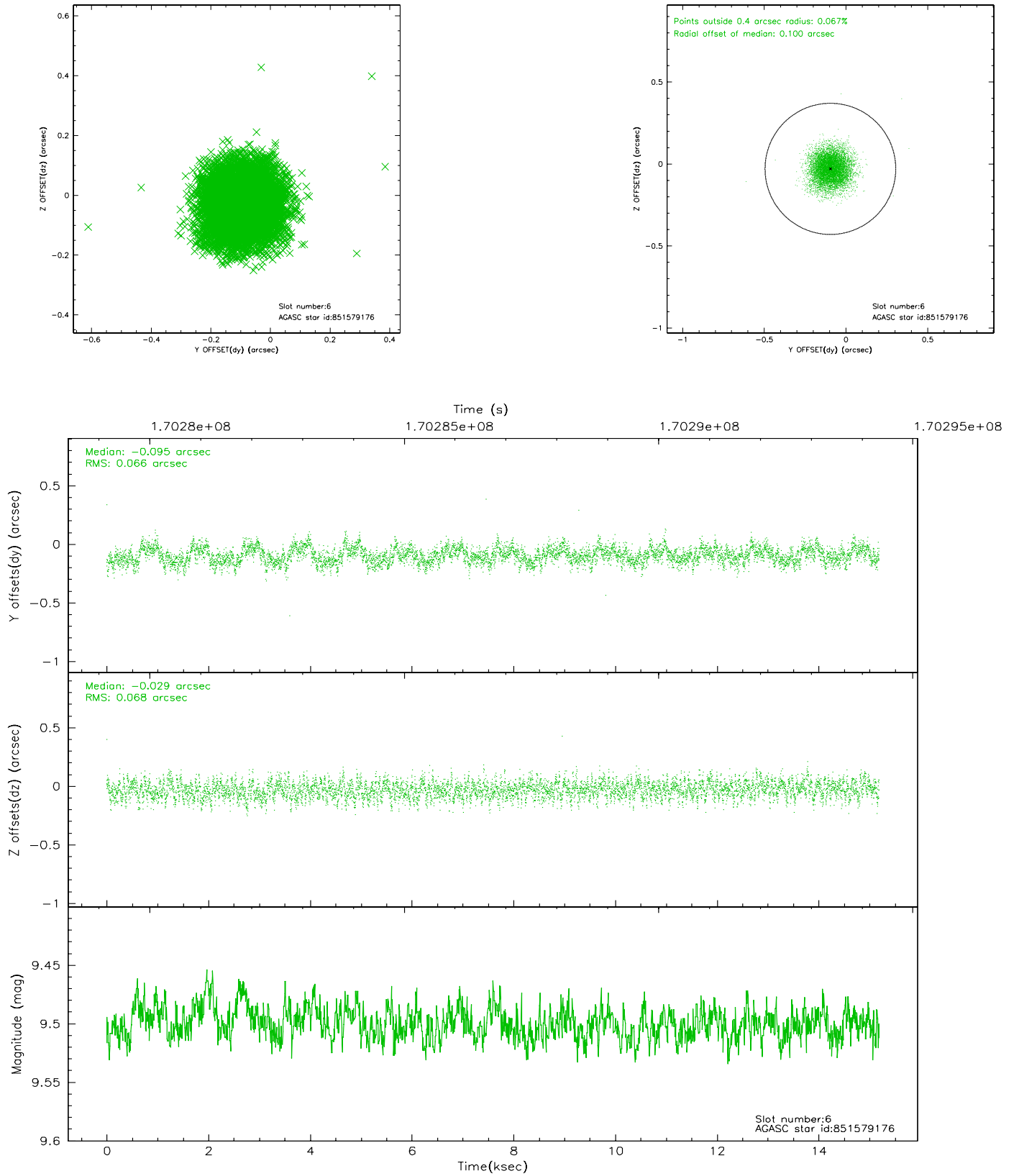
2.4.2 Slot 4



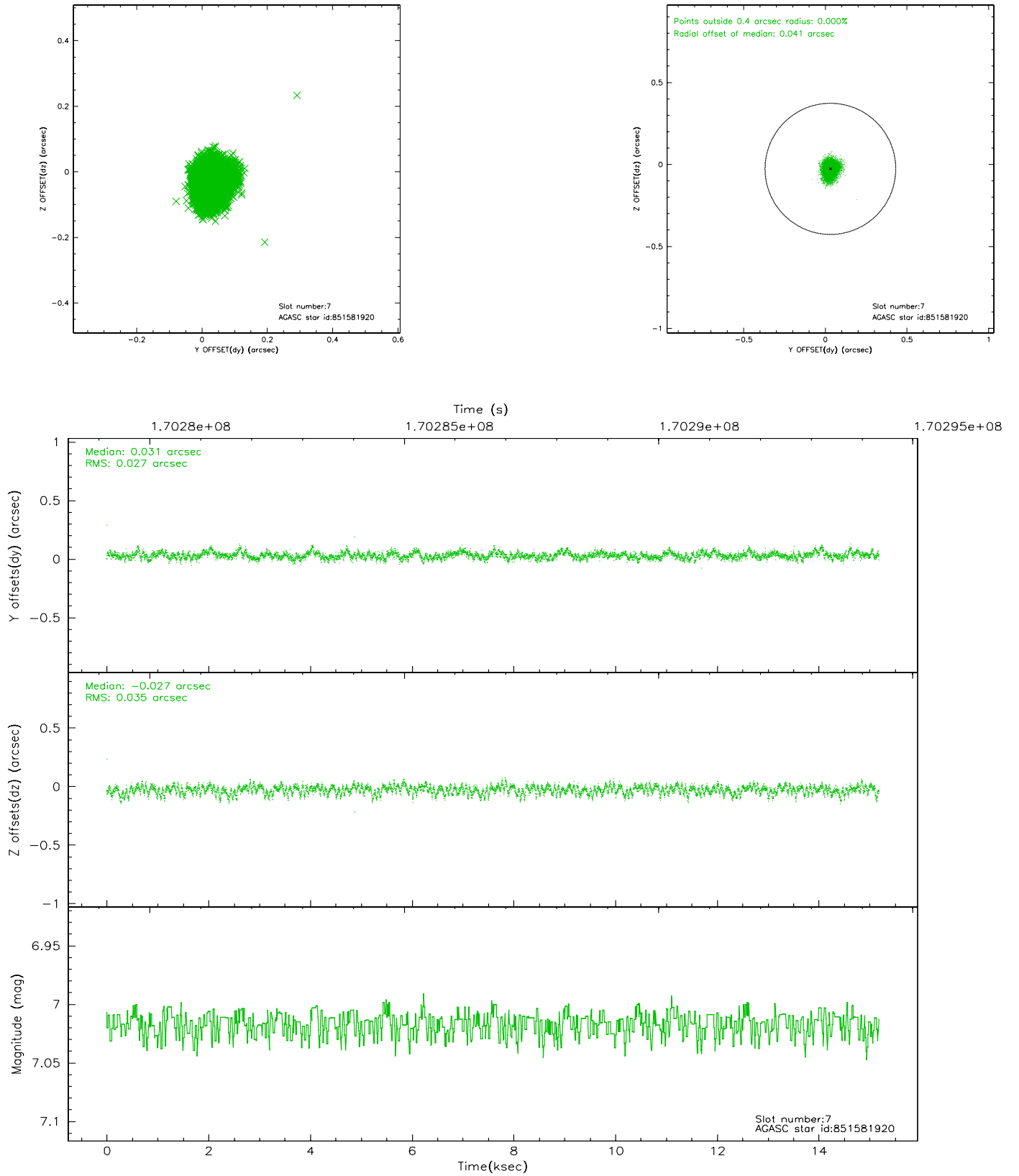
2.4.3 Slot 5



2.4.4 Slot 6

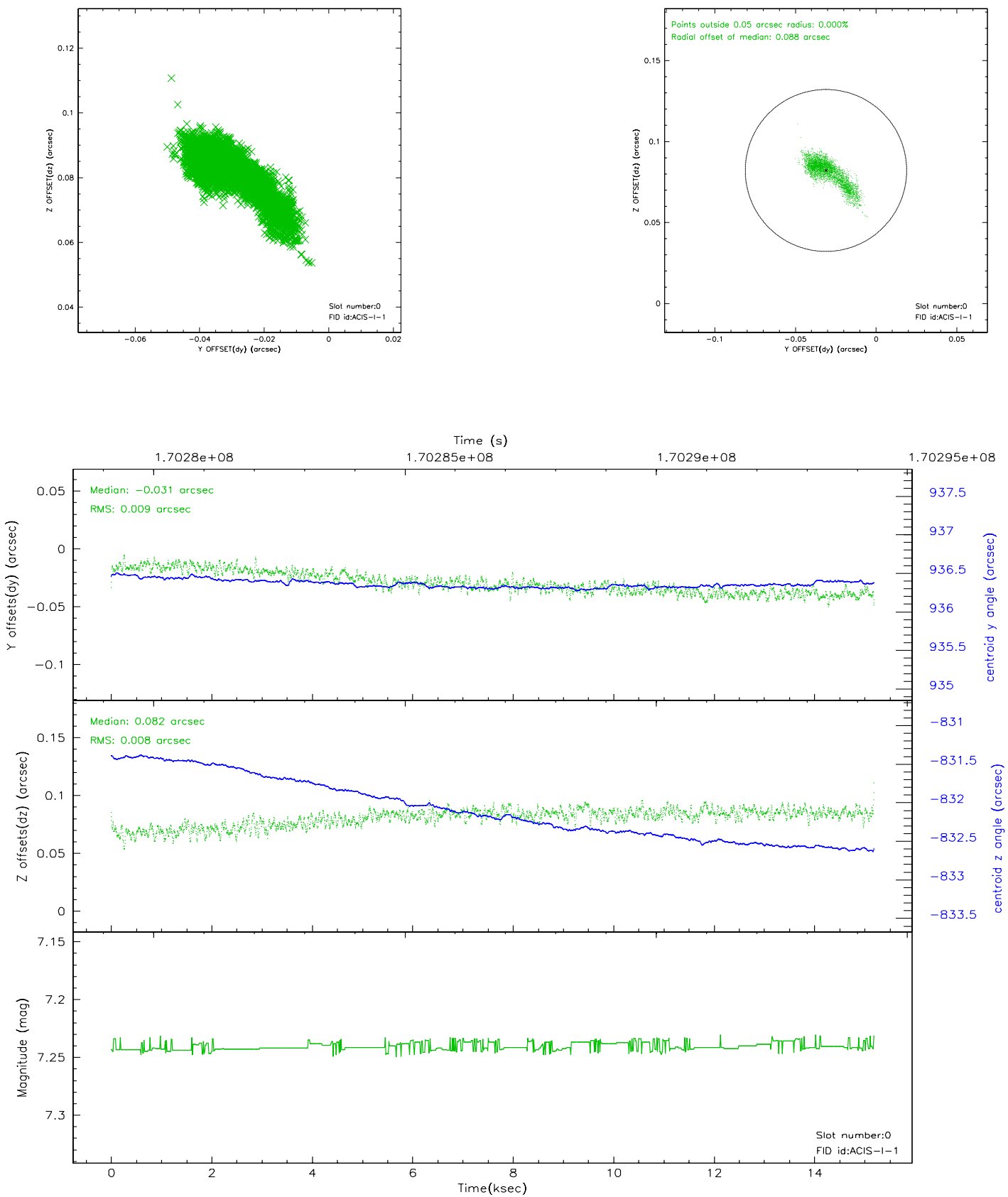


2.4.5 Slot 7

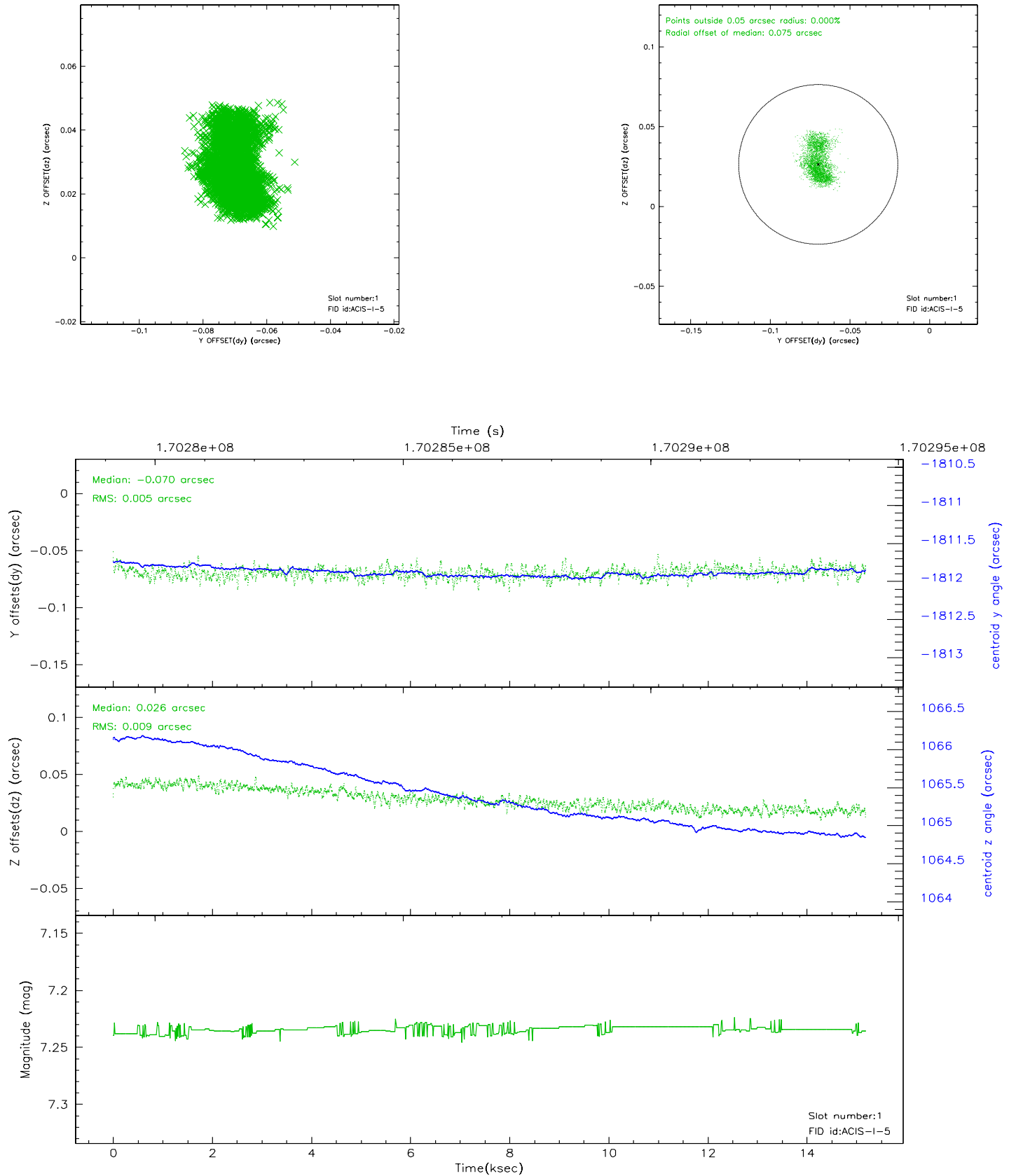


2.5 FID Slots

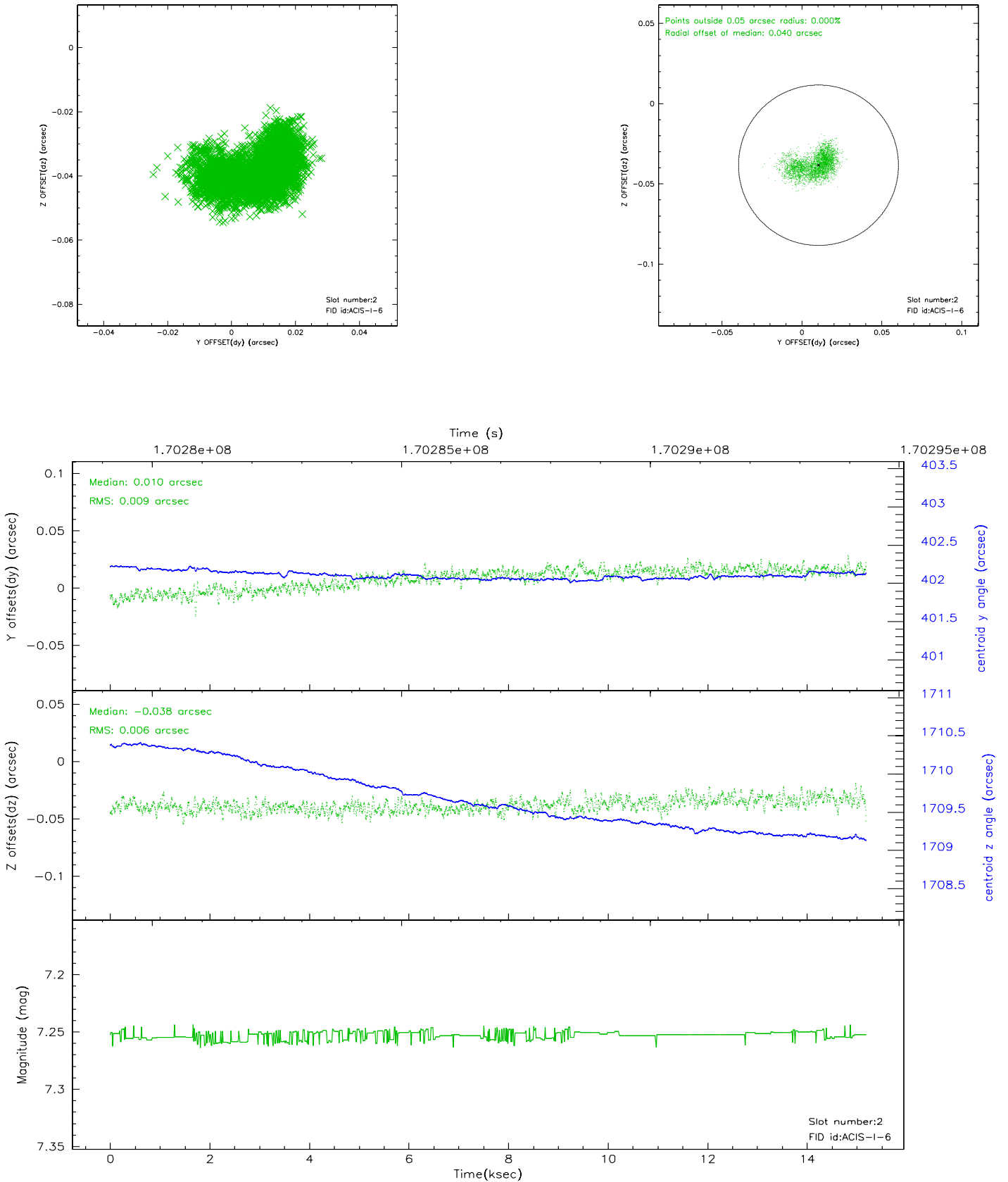
2.5.1 Slot 0



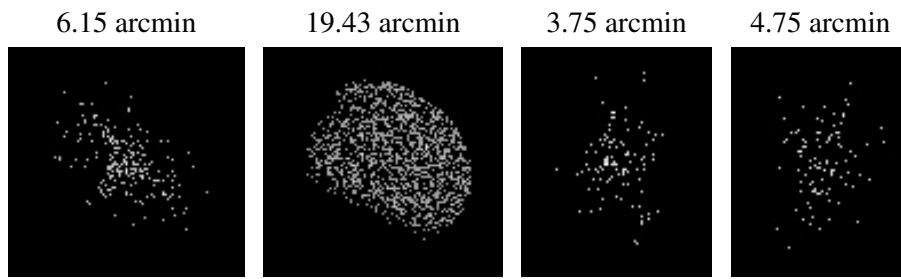
2.5.2 Slot 1



2.5.3 Slot 2



3 Point Sources



A Summary

A.1 Status

V&V Scientist	Beth Sundheim
V&V Date (YYYY-MM-DD)	2006.08.03
V&V Edition	1
V&V Disposition and Status	OK
V&V Charge Time	14.969

A.2 Comments