

V&V Reference Report

L2 ASCDS Version : 7.6.8

Observation 4272 - L2 Version 001
Chandra X-Ray Center

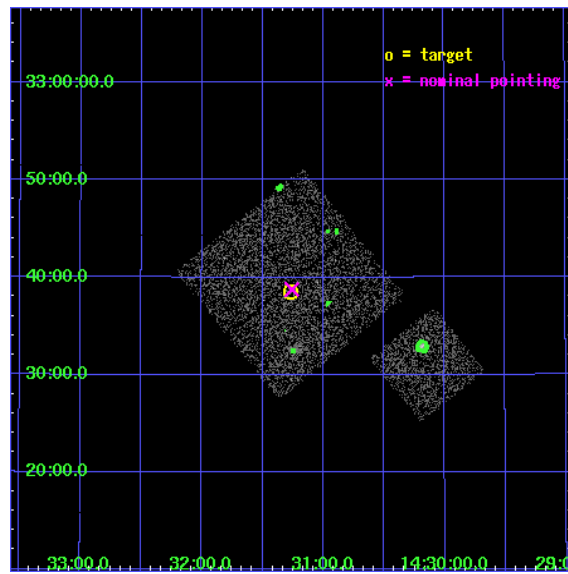
L2 Processing Date : Jul 29 2006

Contents

1	Front	2
2	OBI	3
2.1	OBI	3
2.1.1	Images	3
2.1.2	Bias	3
2.1.3	Parameters	4
2.1.4	Events	4
2.2	Compared Parameters	5
2.3	Aspect	6
2.4	Star Slots	9
2.4.1	Slot 3	9
2.4.2	Slot 4	10
2.4.3	Slot 5	11
2.4.4	Slot 6	12
2.4.5	Slot 7	13
2.5	FID Slots	14
2.5.1	Slot 0	14
2.5.2	Slot 1	15
2.5.3	Slot 2	16
3	Point Sources	17
A	Summary	18
A.1	Status	18
A.2	Comments	18

1 Front

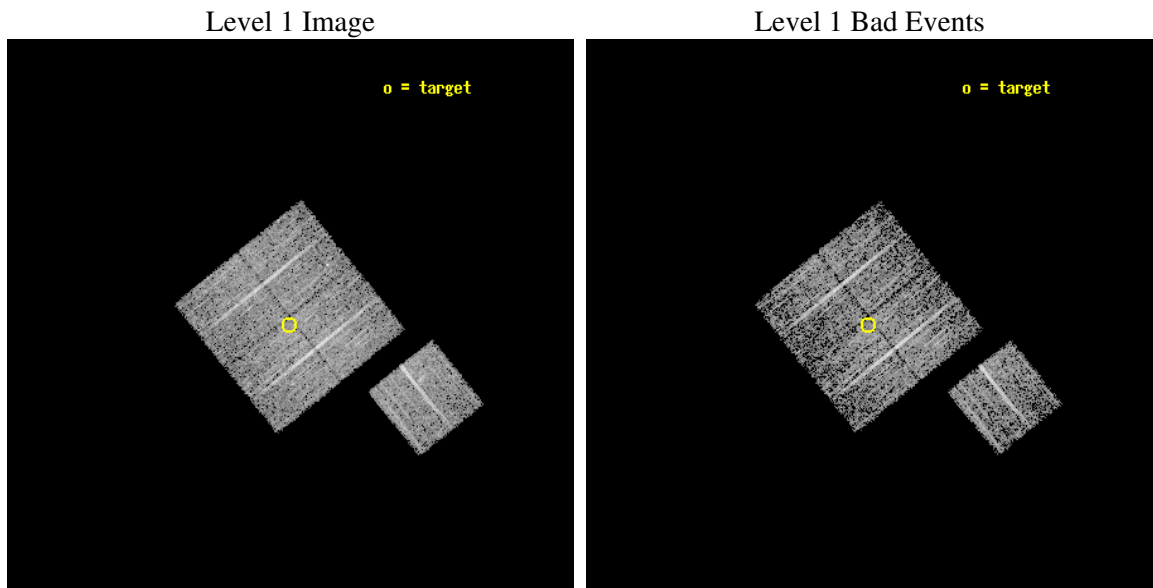
seq_num	900315
obs_id	4272
title	A CHANDRA WIDE-FIELD SURVEY TO MAP THE COSMIC WEB AND INVESTIGATE THE EVOLUTION OF NUCLEAR ACCRETION
observer	Dr. Christine Jones
object	SS55
dtcycle	0
cycle	P
ra_targ	217.816997
dec_targ	32.642142
ra_nom	217.81444890748
dec_nom	32.646164818674
roll_nom	141.01006815542
revision	2
ontime	5021.999990344
livetime	4956.3838633276
ontime0	5021.999990344
ontime1	5021.999990344
ontime2	5021.999990344
ontime3	5021.999990344
ontime6	5021.999990344
l2events	10484



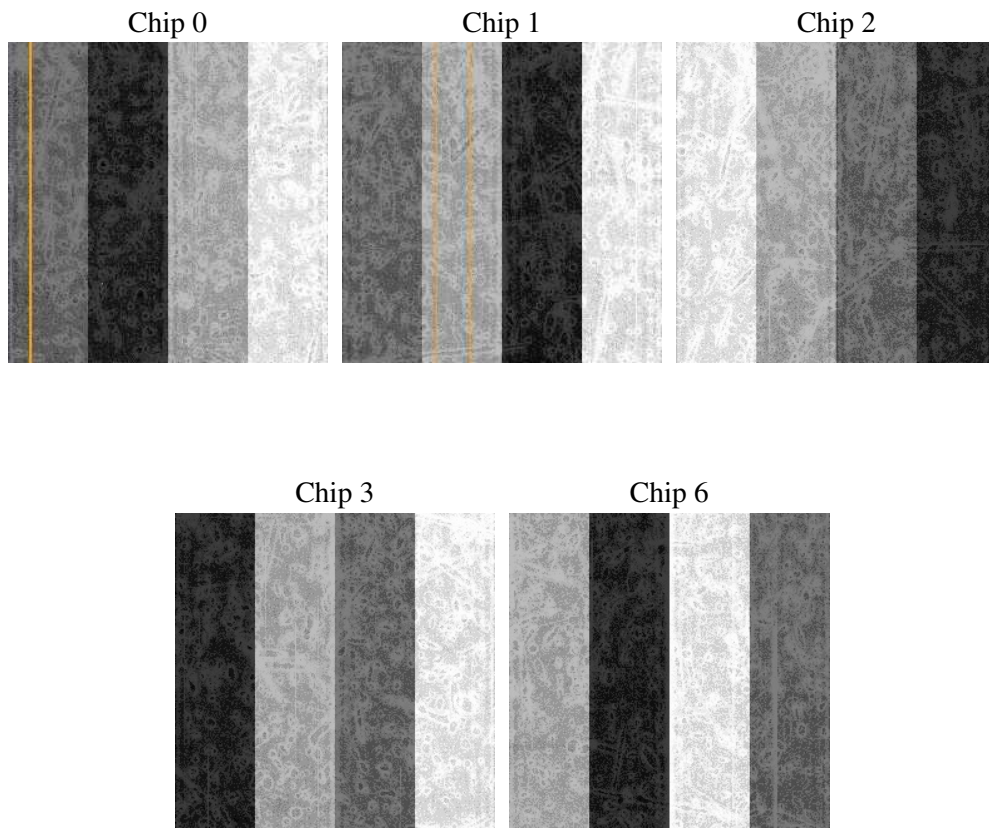
2 OBI

2.1 OBI

2.1.1 Images



2.1.2 Bias



2.1.3 Parameters

obi_num	1
ascdsver	7.6.8
caldsver	3.2.2
date	2006-07-29T20:28:56
revision	2

sched_exp_time	4900.000000
ontime	5025.6172321737
ontime0	5025.6172321737
ontime1	5025.6172321737
ontime2	5025.6172321737
ontime3	5025.6172321737
ontime6	5025.6172321737
l1events	120714

2.1.4 Events

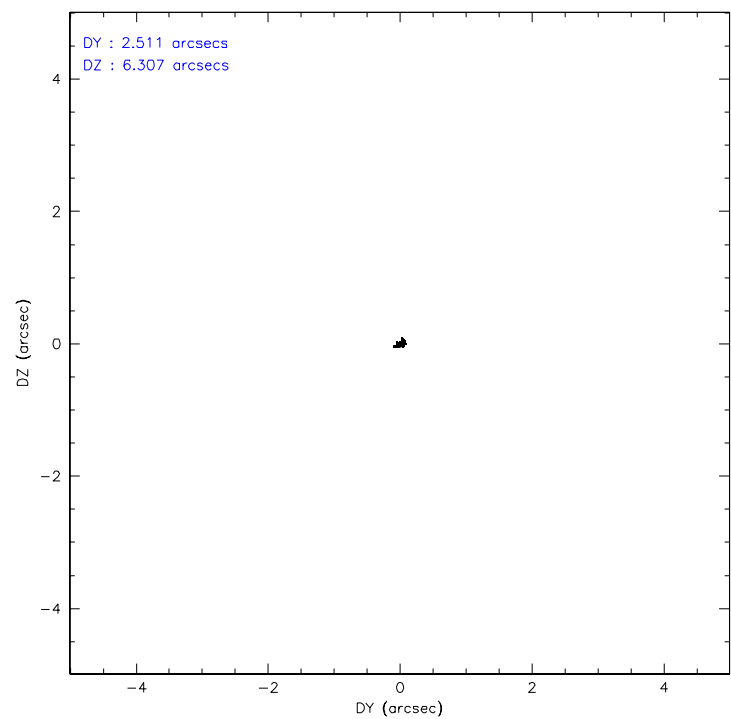
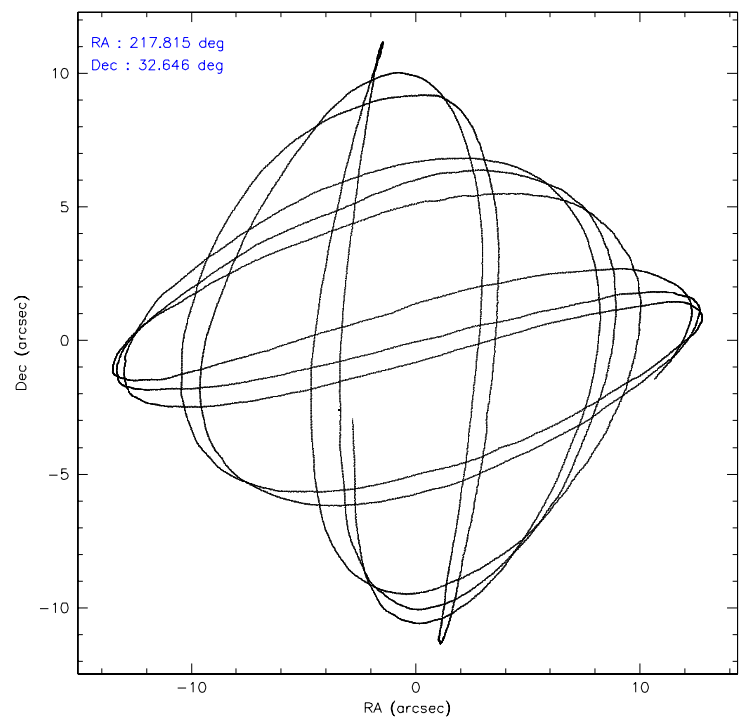
	ccd 0	ccd 1	ccd 2	ccd 3	ccd 6
level 1 events	23008	22451	25693	24513	25049
rejected events	20436	19908	23320	21980	22395
rejected %	88%	88%	90%	89%	89%

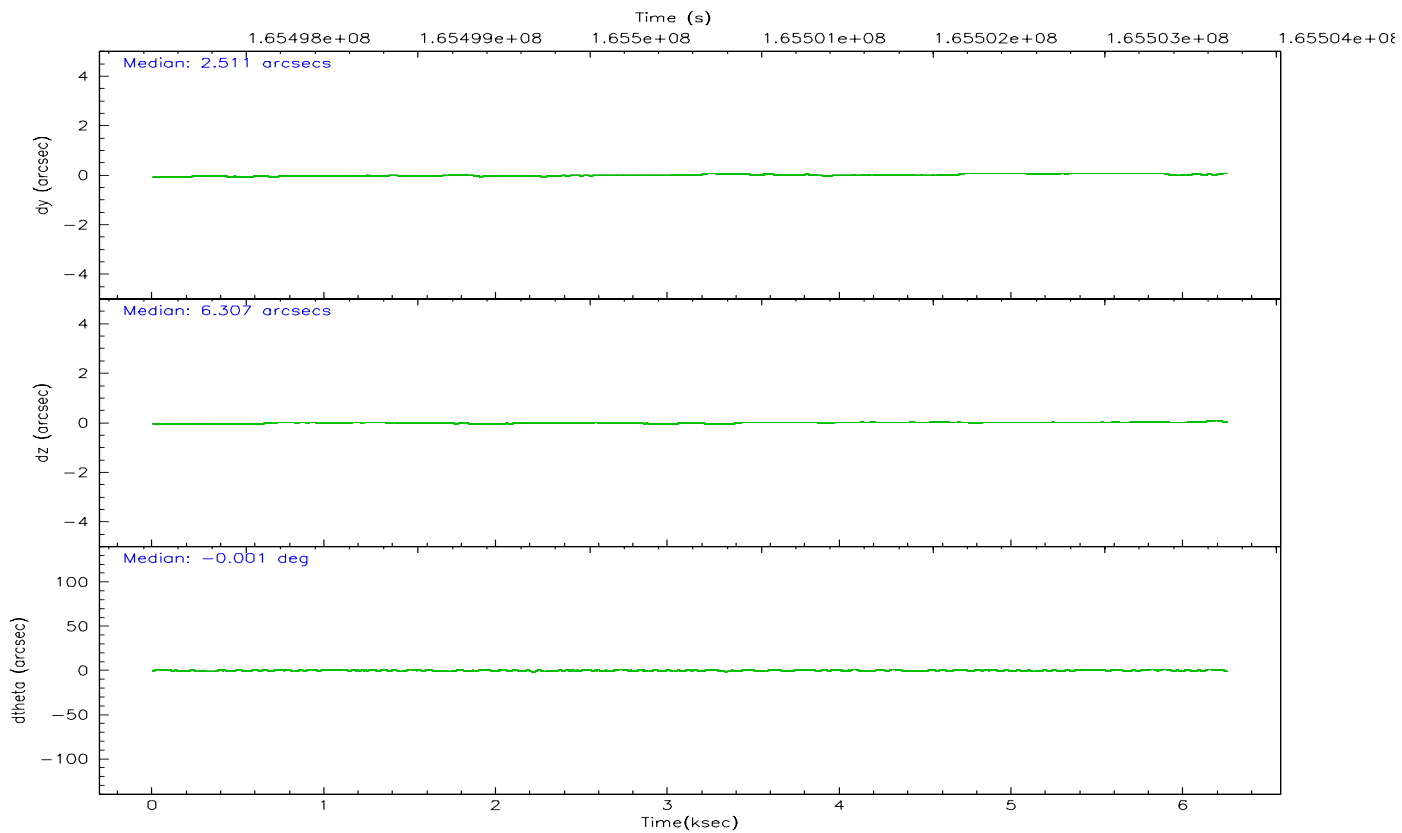
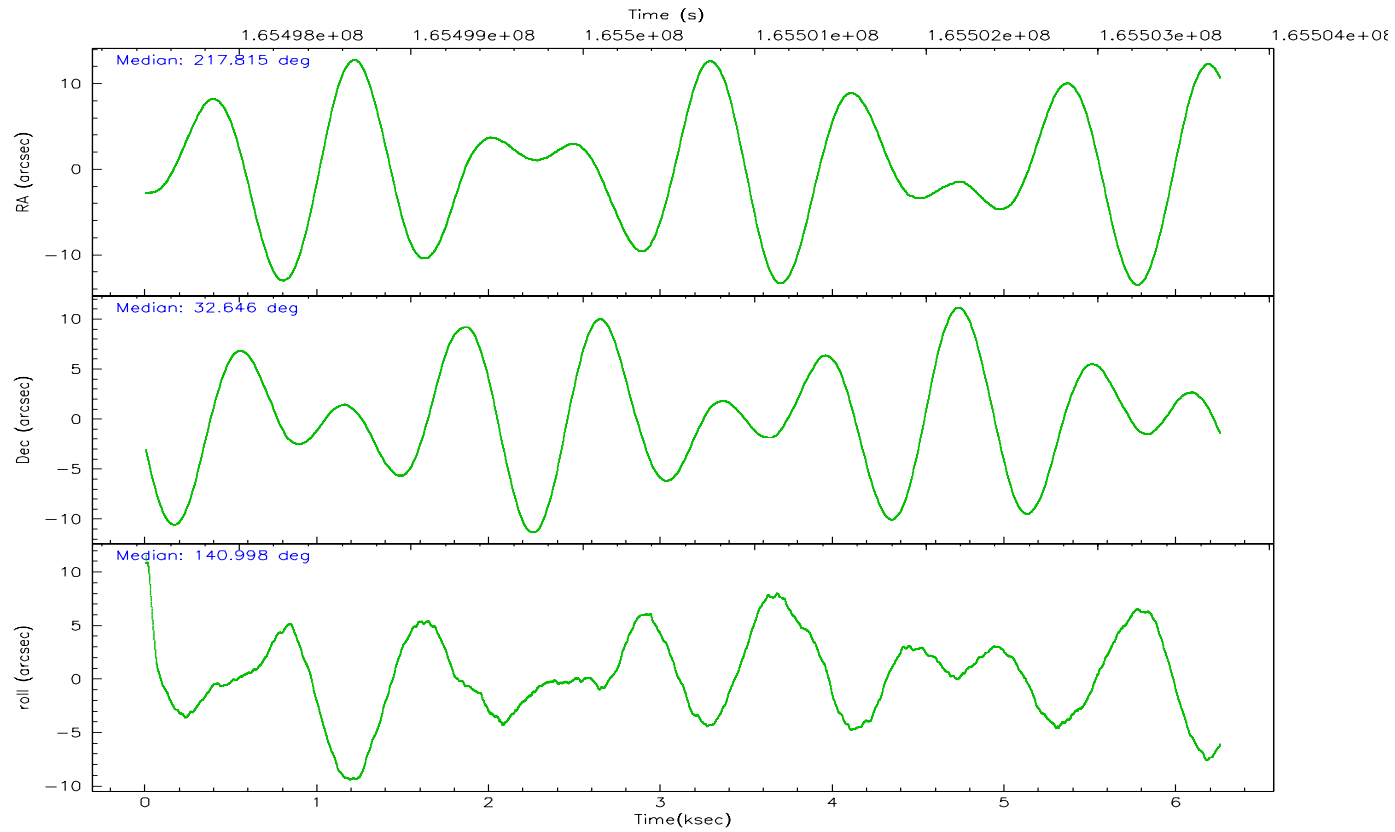
	ccd 0	ccd 1	ccd 2	ccd 3	ccd 6
grade 0 events	1027	880	856	1053	1048
	4%	3%	3%	4%	4%
grade 1 events	17	8	9	19	8
	0%	0%	0%	0%	0%
grade 2 events	556	532	555	508	549
	2%	2%	2%	2%	2%
grade 3 events	288	302	272	266	310
	1%	1%	1%	1%	1%
grade 4 events	263	306	270	286	286
	1%	1%	1%	1%	1%
grade 5 events	664	763	691	761	818
	2%	3%	2%	3%	3%
grade 6 events	438	526	420	422	462
	1%	2%	1%	1%	1%
grade 7 events	19755	19134	22620	21198	21568
	85%	85%	88%	86%	86%

2.2 Compared Parameters

Parameter	Planned	Actual	Parameter	Planned	Actual
Instrument	ACIS	ACIS	Obspar format version number	6	6
Detector	ACIS-01236	ACIS-01236	Obspar file type	PREDICTED	ACTUAL
Grating	NONE	NONE	Obspar update status	NONE	UPDATED
Data mode	VFAINT	VFAINT	On-chip summing requested	N	N
Observation mode	POINTING	POINTING	Subarray requested	NONE	NONE
Pointing RA	217.846552	217.8144489074763	Alternating exposures requested	N	N
Pointing Dec	32.642056	32.64616481867429	Primary exposure time	0.000000	3.1
Pointing Roll	140.784057	141.0100681554209			
SIM focus pos (mm)	-0.782348	-0.7809083437167272			
SIM defocus (mm)	0	0.001439871863259334			
SIM translation stage pos (mm)	-233.592463	-233.5874344608287			
SIM translation stage offset (mm)	0	-0.005018542100998502			
Observation start time	165498814.184000	165497267.70444			
Observation start date	2003-03-31T11:52:30	2003-03-31T11:27:47			
Observation end time	165503714.184000	165503848.20472			
Observation end date	2003-03-31T13:14:10	2003-03-31T13:17:28			
Read mode	TIMED	TIMED			

2.3 Aspect



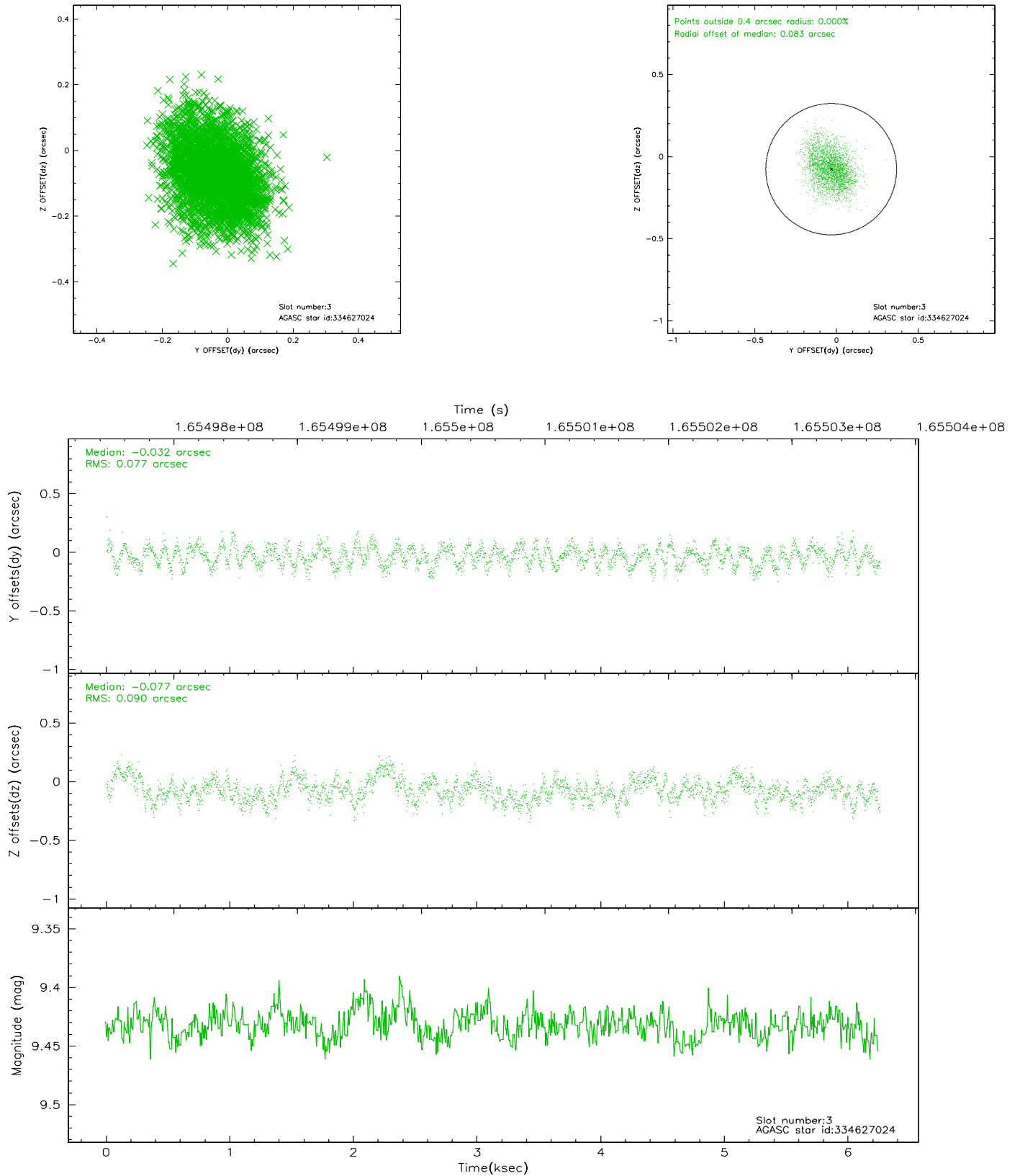


Slot Statistics

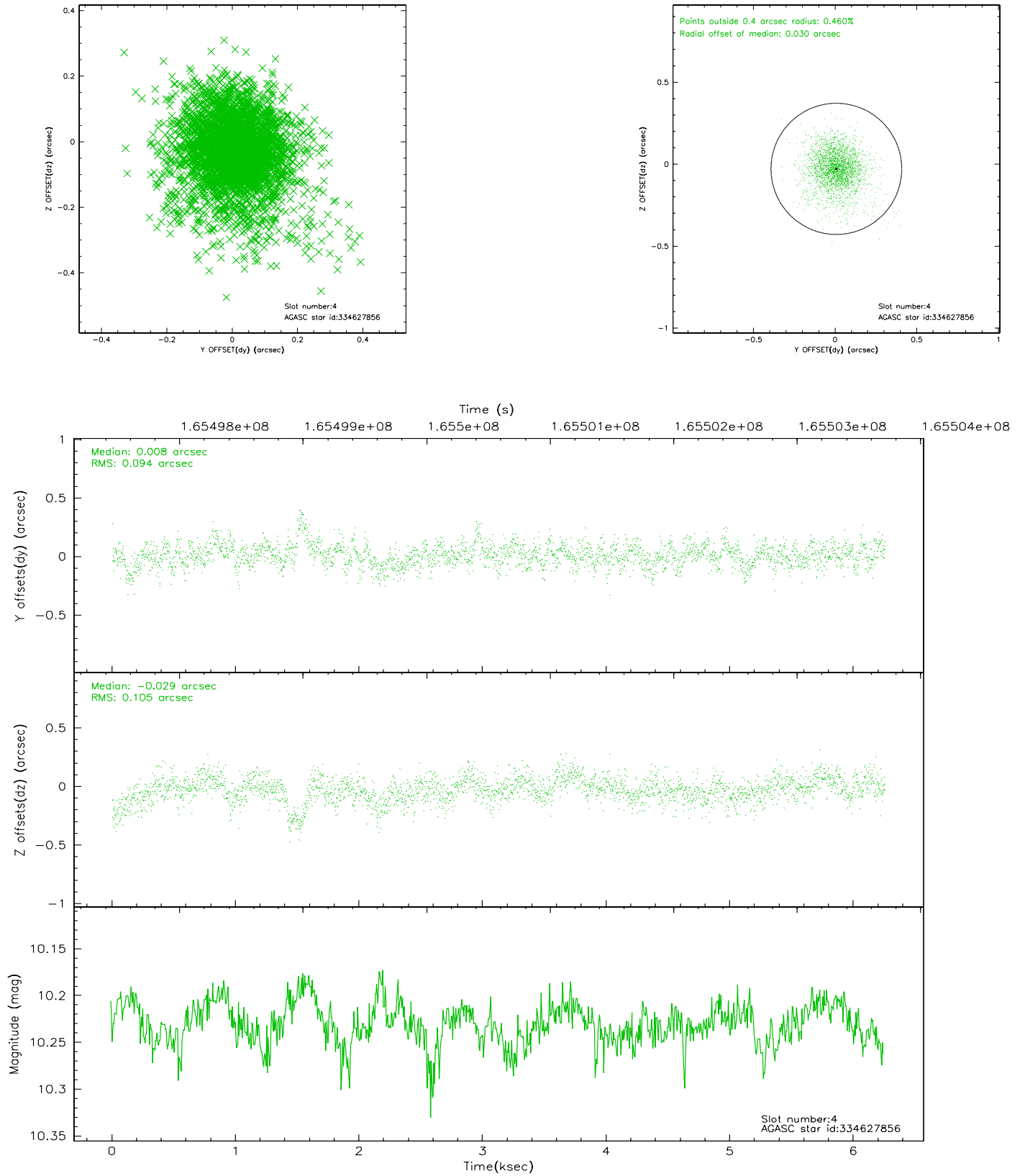
slot	status	id	mag	n_pts	med_dy	med_dz	dr1	dr2	ra	dec	mean_y	mean_z
0	FID	ACIS-I-1	7.25	1525	-0.013	0.023	0.006	0.012	0.000000	0.000000	937.27	-829.67
1	FID	ACIS-I-5	7.24	1525	-0.046	0.040	0.006	0.010	0.000000	0.000000	-1810.32	1067.40
2	FID	ACIS-I-6	7.26	1525	-0.033	0.007	0.007	0.011	0.000000	0.000000	401.81	1712.91
3	GUIDE	334627024	9.43	3050	-0.032	-0.077	0.128	0.205	217.318801	32.278221	418.76	2027.50
4	GUIDE	334627856	10.23	3046	0.008	-0.029	0.143	0.254	217.544668	32.407167	177.51	1235.03
5	GUIDE	334629976	9.93	3049	0.051	-0.017	0.119	0.185	217.912342	31.982896	-1655.81	1711.79
6	GUIDE	335027640	9.10	3049	-0.017	0.068	0.088	0.143	218.092211	33.193770	683.16	-2006.45
7	GUIDE	335029384	8.49	3044	-0.014	0.057	0.074	0.115	217.848061	33.088477	1013.29	-1248.21

2.4 Star Slots

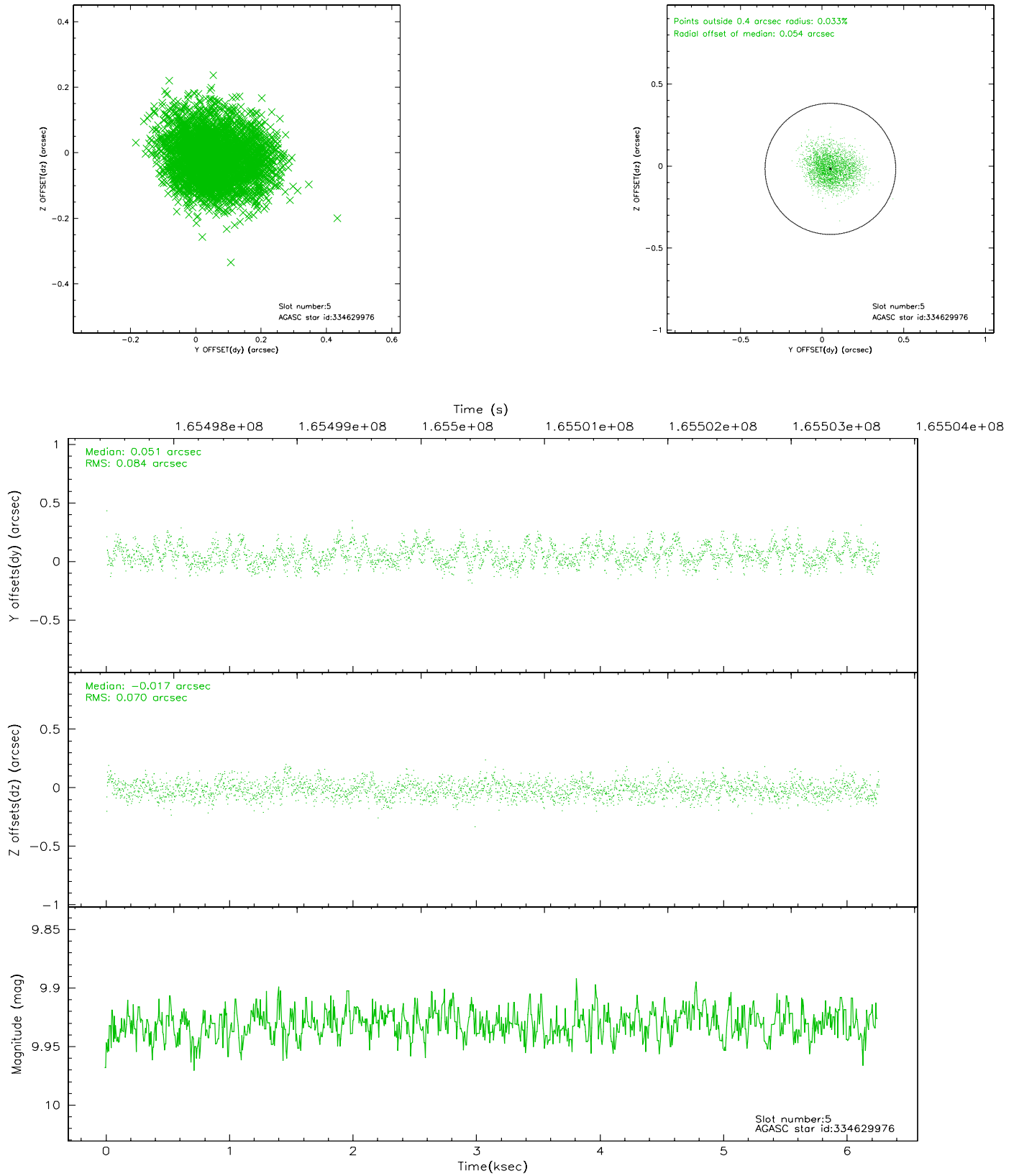
2.4.1 Slot 3



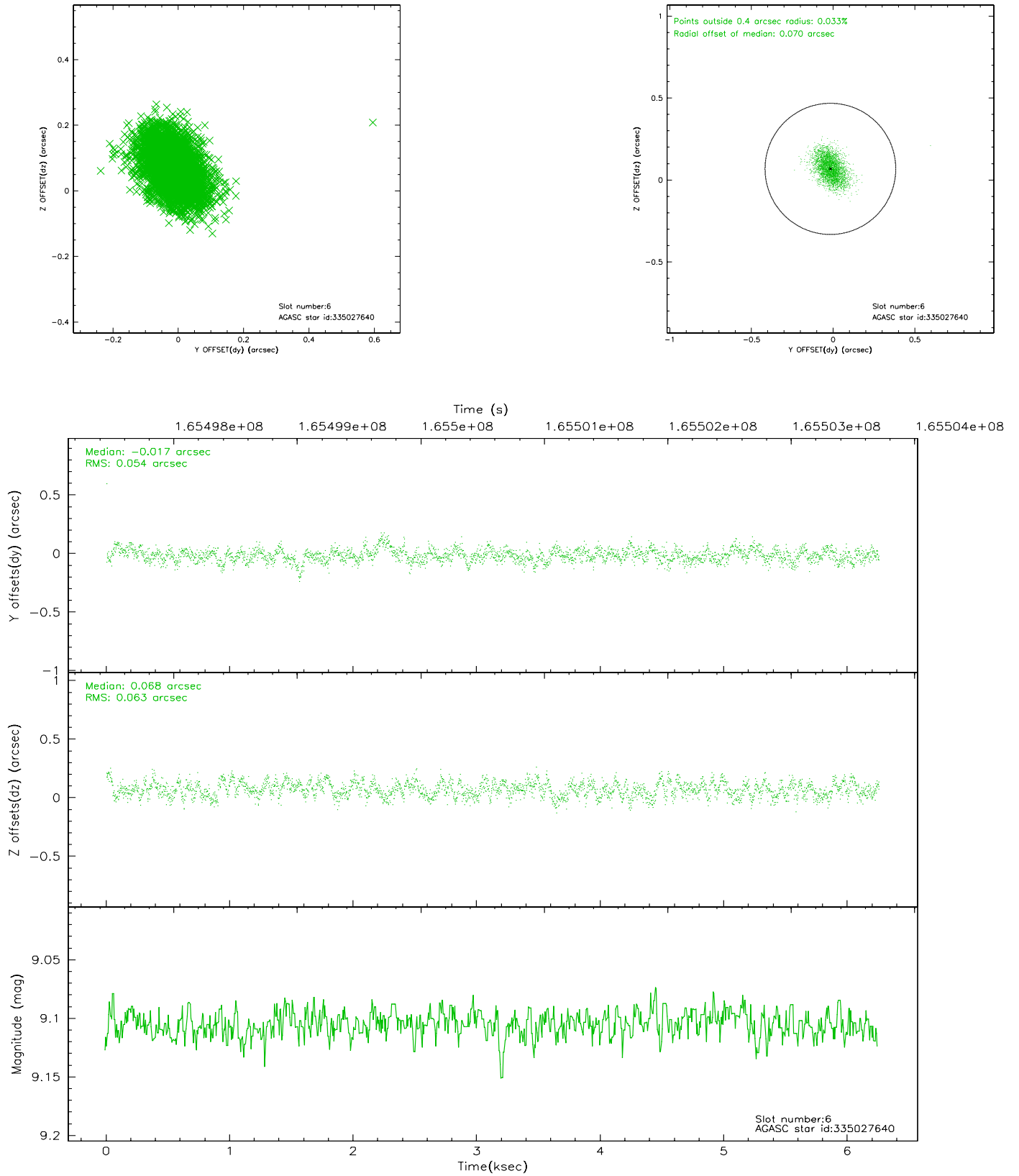
2.4.2 Slot 4



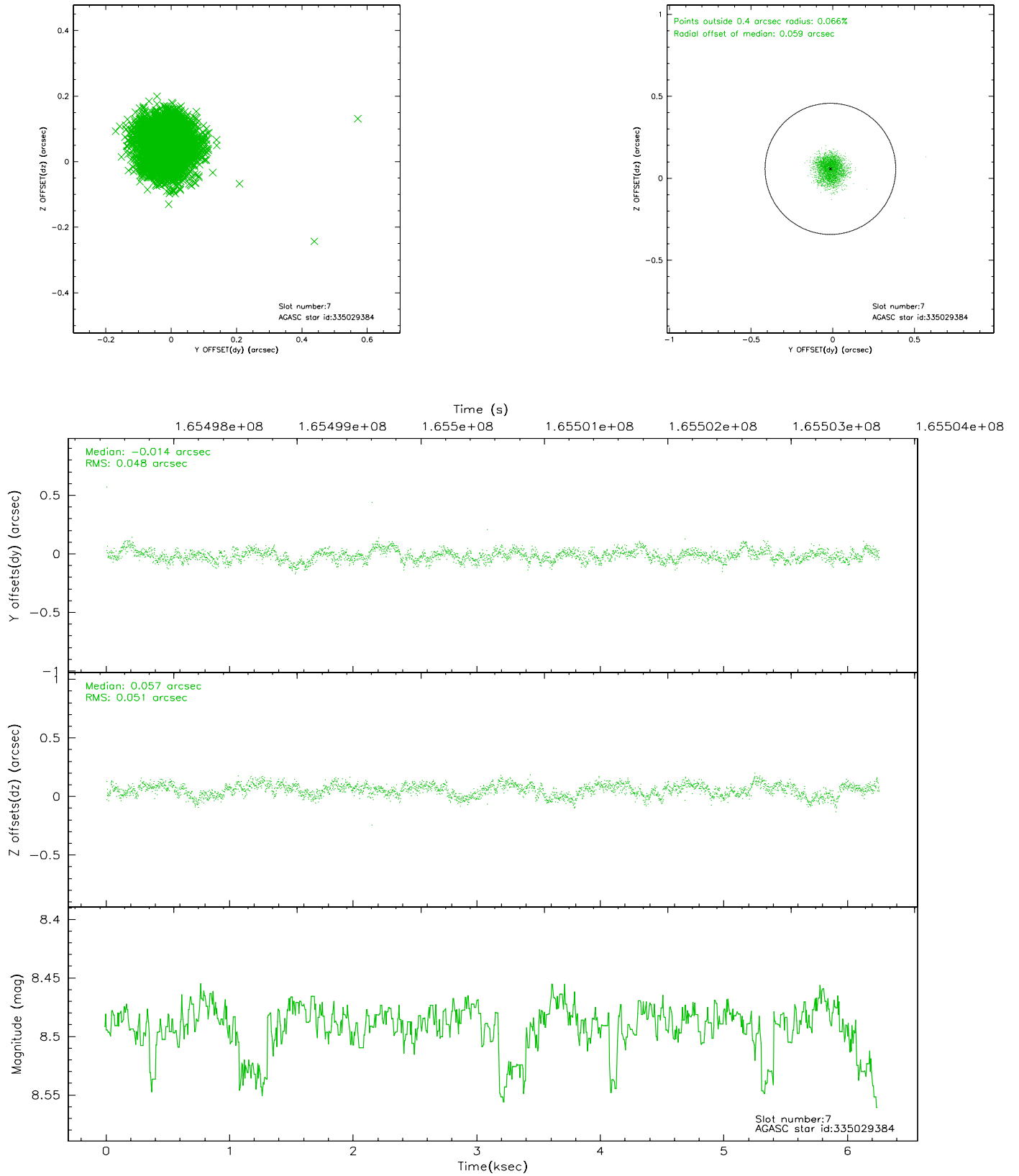
2.4.3 Slot 5



2.4.4 Slot 6

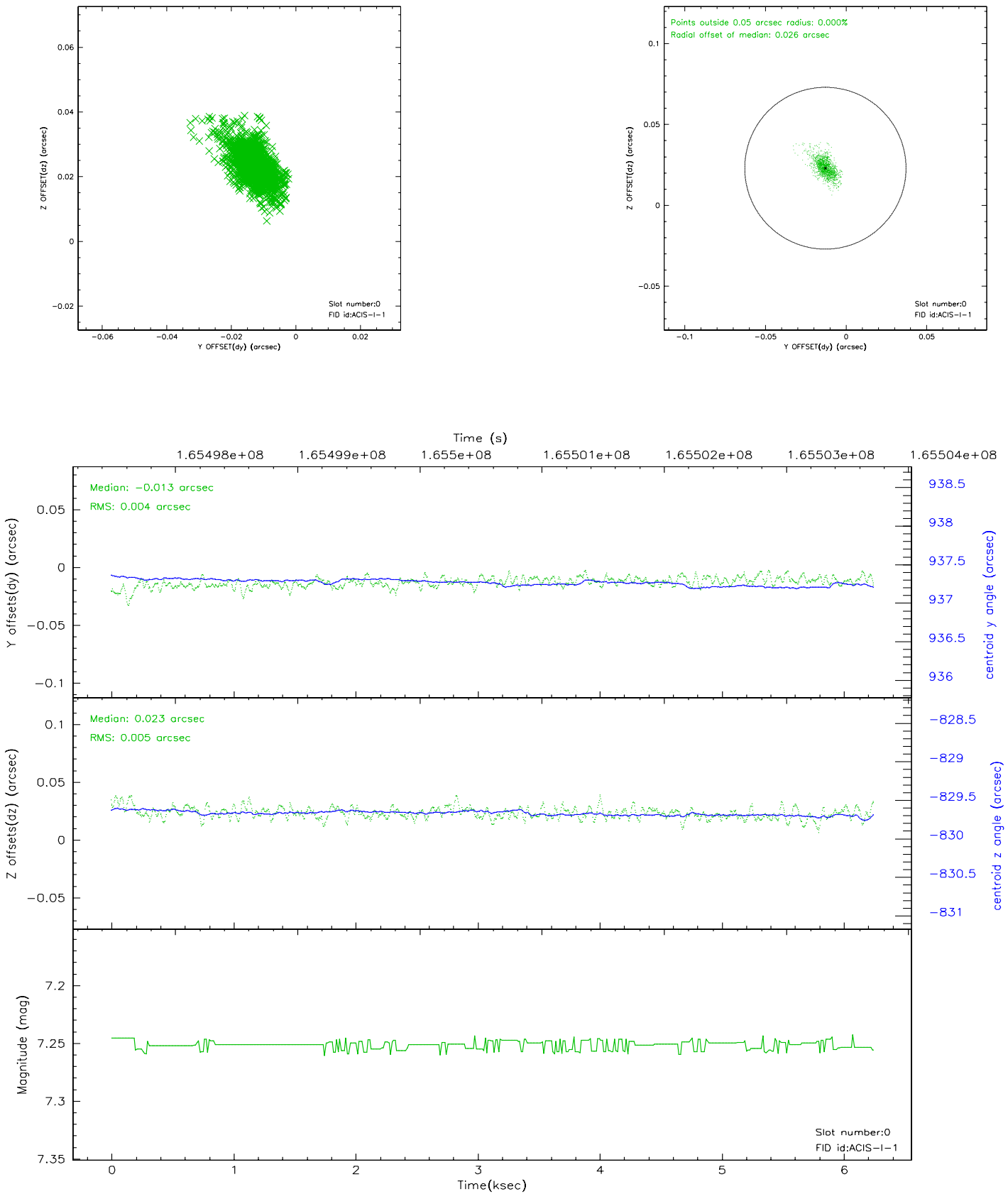


2.4.5 Slot 7

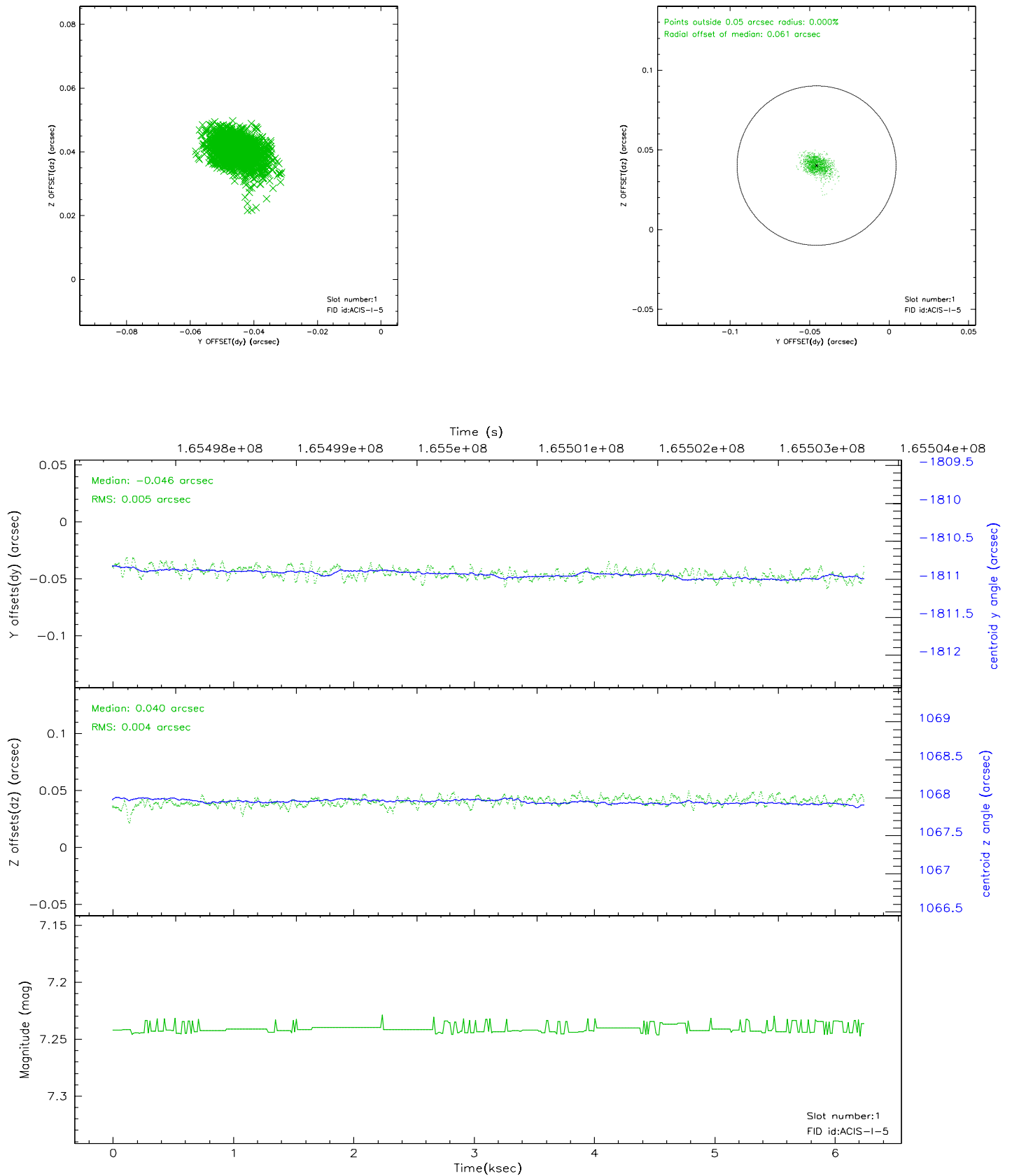


2.5 FID Slots

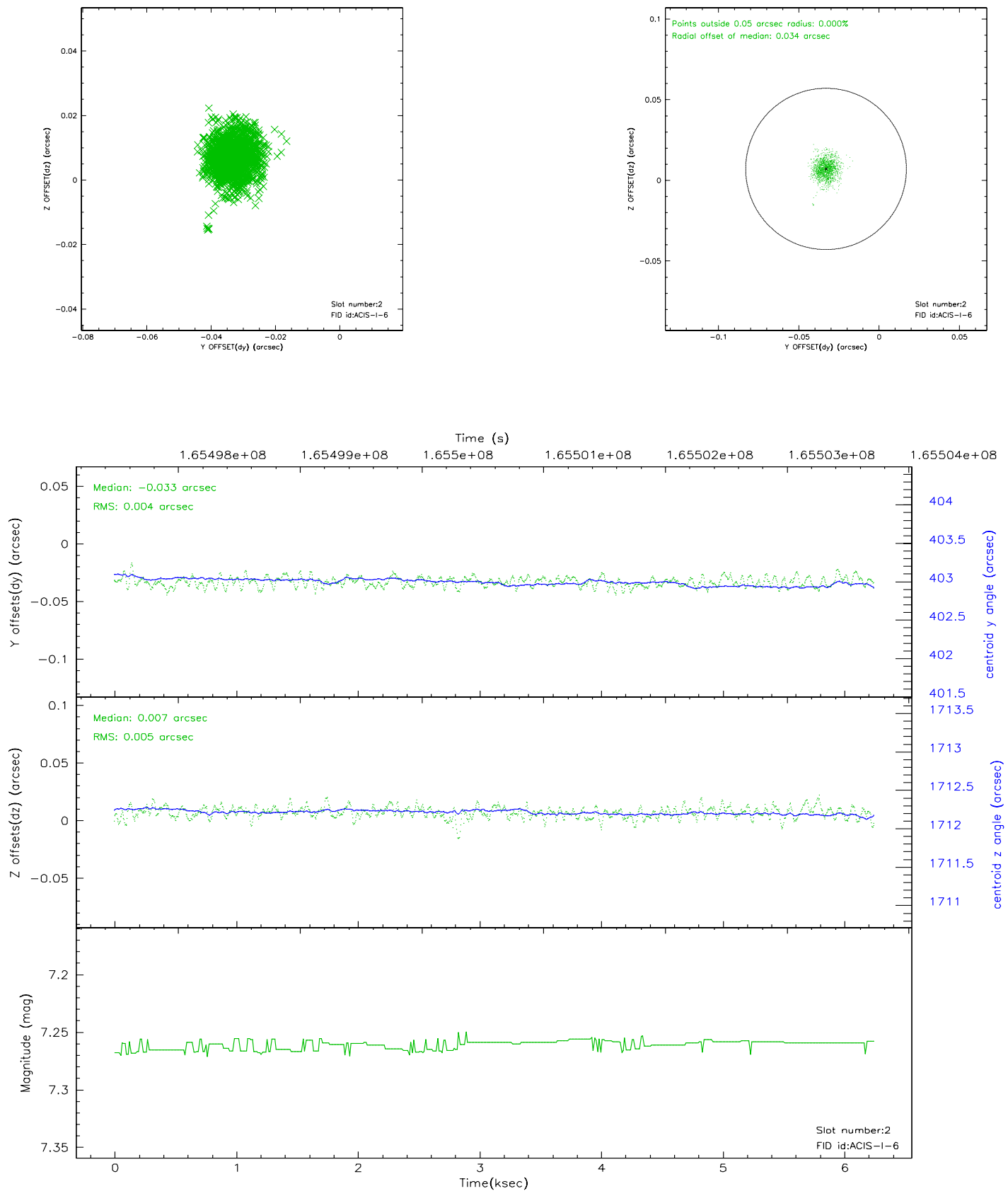
2.5.1 Slot 0



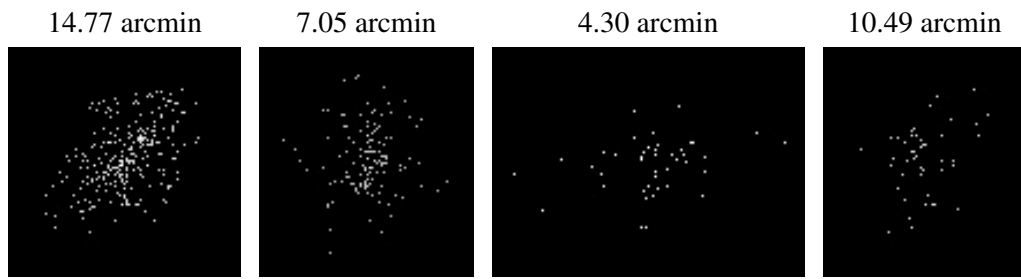
2.5.2 Slot 1



2.5.3 Slot 2



3 Point Sources



A Summary

A.1 Status

V&V Scientist	Jen Lauer
V&V Date (YYYY-MM-DD)	2006.07.30
V&V Edition	1
V&V Disposition and Status	OK
V&V Charge Time	5.025

A.2 Comments