

# V&V Reference Report

## L2 ASCDS Version : 7.6.8

Observation 4261 - L2 Version 001  
Chandra X-Ray Center

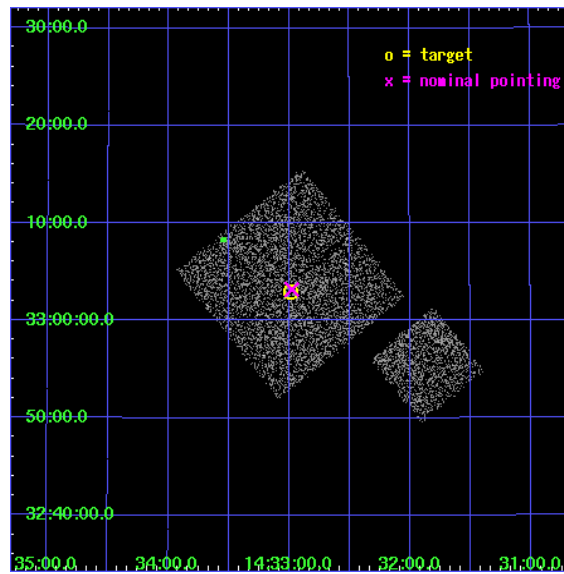
L2 Processing Date : Jul 29 2006

## Contents

<b>1</b>	<b>Front</b>	<b>2</b>
<b>2</b>	<b>OBI</b>	<b>3</b>
2.1	OBI . . . . .	3
2.1.1	Images . . . . .	3
2.1.2	Bias . . . . .	3
2.1.3	Parameters . . . . .	4
2.1.4	Events . . . . .	4
2.2	Compared Parameters . . . . .	5
2.3	Aspect . . . . .	6
2.4	Star Slots . . . . .	9
2.4.1	Slot 3 . . . . .	9
2.4.2	Slot 4 . . . . .	10
2.4.3	Slot 5 . . . . .	11
2.4.4	Slot 6 . . . . .	12
2.4.5	Slot 7 . . . . .	13
2.5	FID Slots . . . . .	14
2.5.1	Slot 0 . . . . .	14
2.5.2	Slot 1 . . . . .	15
2.5.3	Slot 2 . . . . .	16
<b>3</b>	<b>Point Sources</b>	<b>17</b>
<b>A</b>	<b>Summary</b>	<b>18</b>
A.1	Status . . . . .	18
A.2	Comments . . . . .	18

# 1 Front

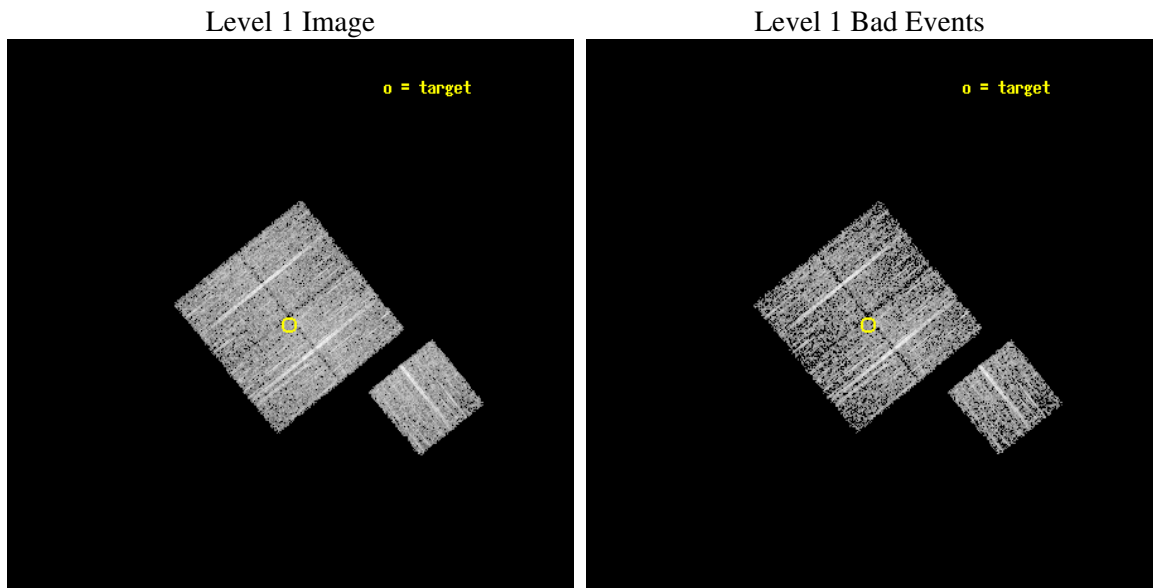
seq_num	900304
obs_id	4261
title	A CHANDRA WIDE-FIELD SURVEY TO MAP THE COSMIC WEB AND INVESTIGATE THE EVOLUTION OF NUCLEAR ACCRETION
observer	Dr. Christine Jones
object	SS42
dtcycle	0
cycle	P
ra_targ	218.246914
dec_targ	33.04953
ra_nom	218.24430186181
dec_nom	33.053484608554
roll_nom	141.01010930031
revision	3
ontime	4777.0999908149
livetime	4714.6836625851
ontime0	4773.9589906633
ontime1	4777.0999908149
ontime2	4777.0999908149
ontime3	4777.0999908149
ontime6	4777.0999908149
l2events	9574



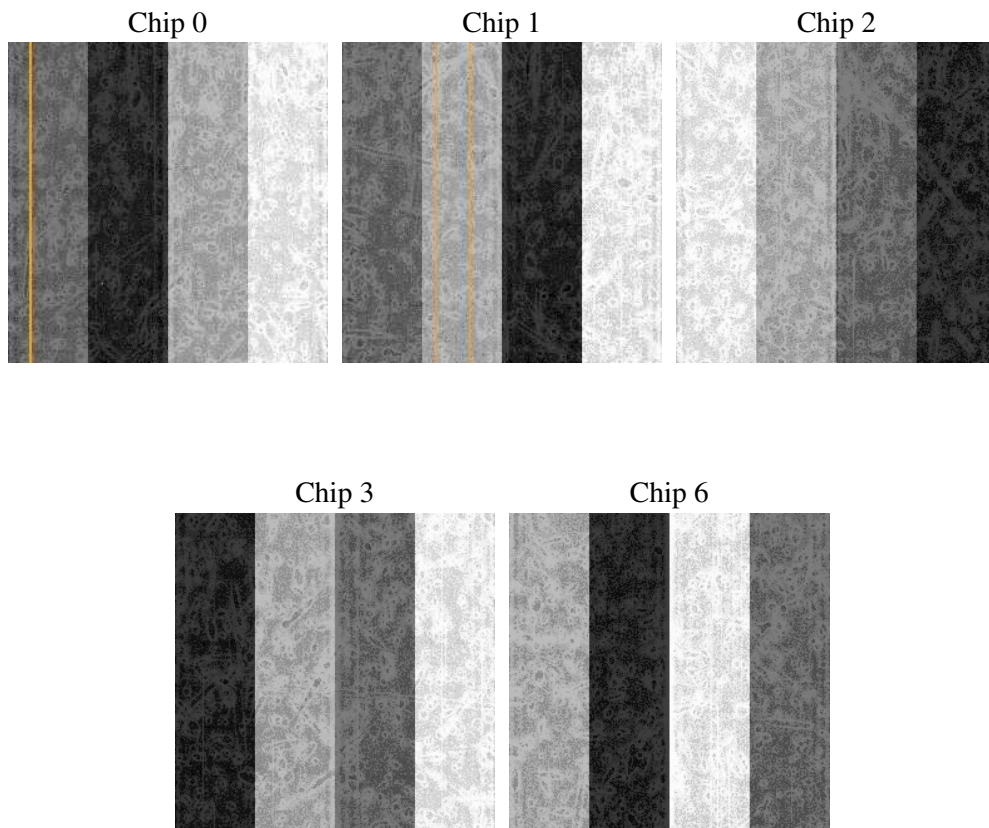
## 2 OBI

### 2.1 OBI

#### 2.1.1 Images



#### 2.1.2 Bias



### 2.1.3 Parameters

obi_num	1
ascdsver	7.6.8
caldsver	3.2.2
date	2006-07-29T23:12:45
revision	3

sched_exp_time	5000.000000
ontime	4780.6166616082
ontime0	4777.4756614566
ontime1	4780.6166616082
ontime2	4780.6166616082
ontime3	4780.6166616082
ontime6	4780.6166616082
l1events	118767

### 2.1.4 Events

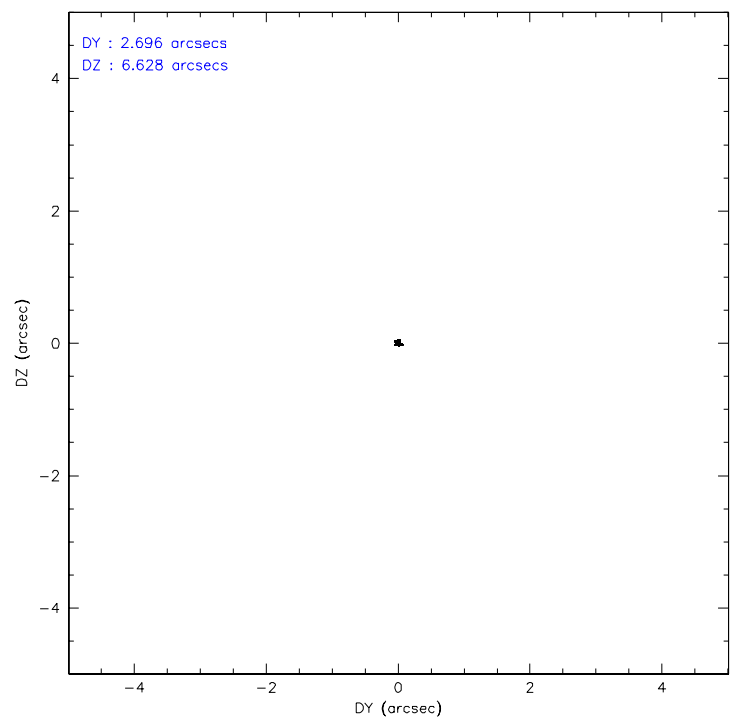
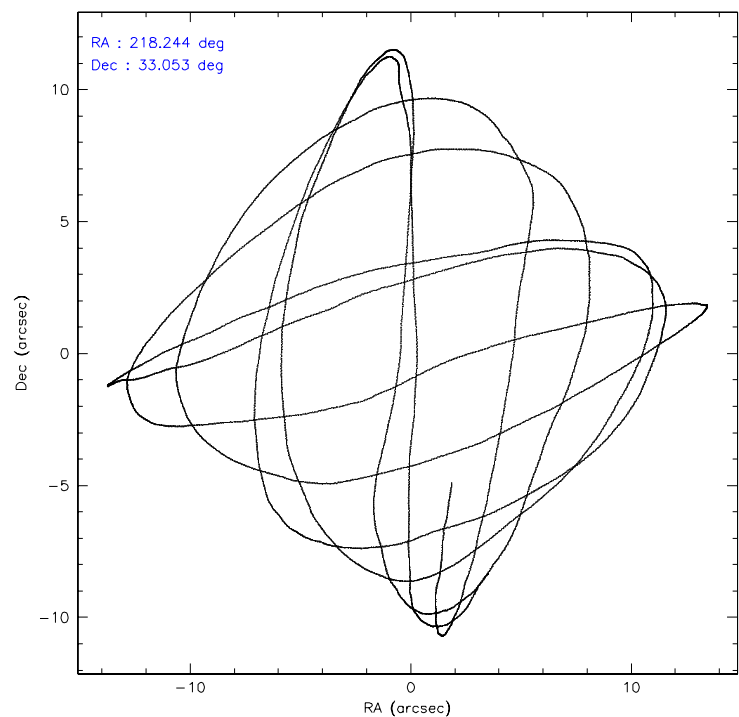
	ccd 0	ccd 1	ccd 2	ccd 3	ccd 6
level 1 events	21766	22256	26469	23994	24282
rejected events	19472	19823	24072	21819	21895
rejected %	89%	89%	90%	90%	90%

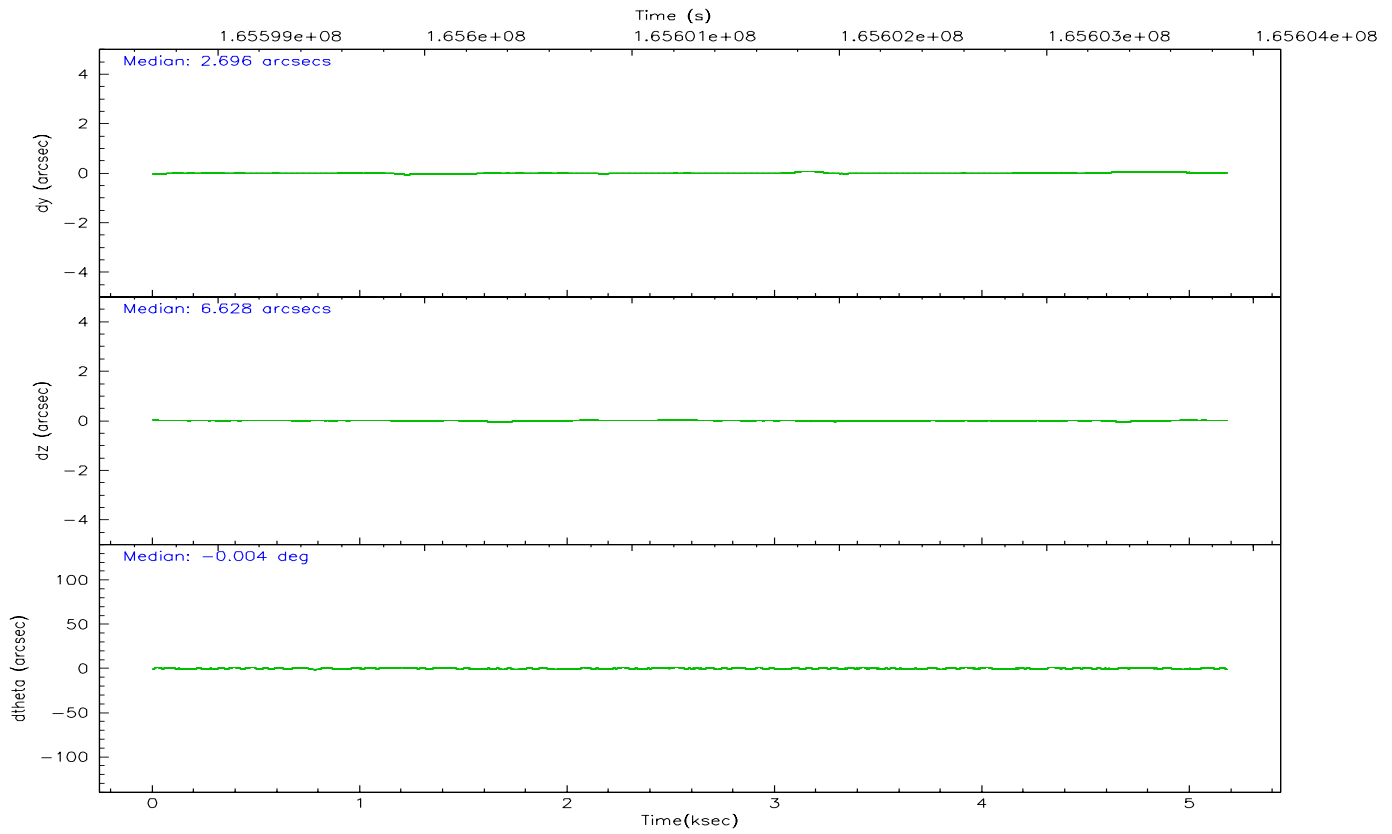
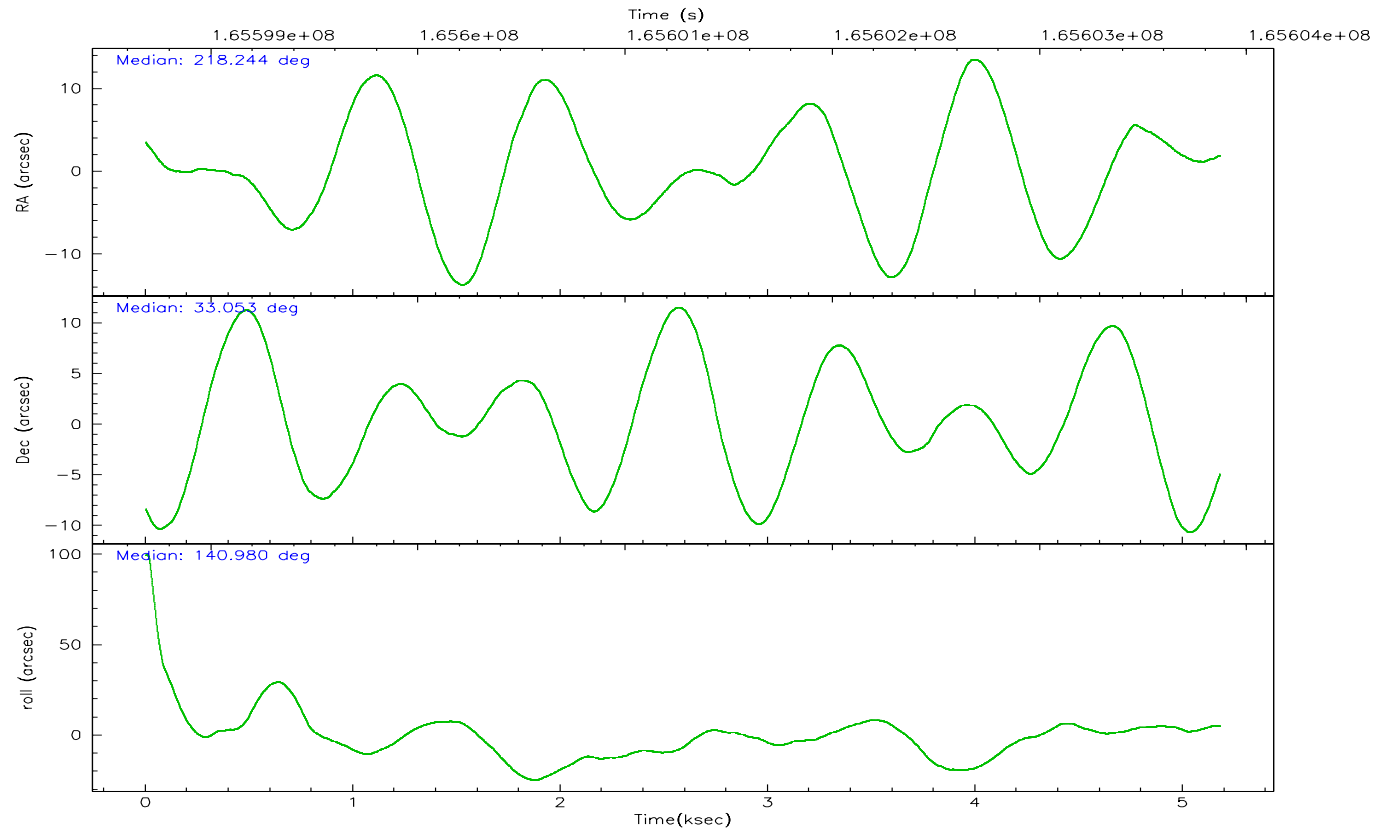
	ccd 0	ccd 1	ccd 2	ccd 3	ccd 6
grade 0 events	832	903	944	829	864
	3%	4%	3%	3%	3%
grade 1 events	7	13	13	14	11
	0%	0%	0%	0%	0%
grade 2 events	549	472	539	439	484
	2%	2%	2%	1%	1%
grade 3 events	291	282	267	250	271
	1%	1%	1%	1%	1%
grade 4 events	225	272	274	261	282
	1%	1%	1%	1%	1%
grade 5 events	658	755	659	783	737
	3%	3%	2%	3%	3%
grade 6 events	398	506	375	398	490
	1%	2%	1%	1%	2%
grade 7 events	18806	19053	23398	21020	21143
	86%	85%	88%	87%	87%

## 2.2 Compared Parameters

Parameter	Planned	Actual	Parameter	Planned	Actual
Instrument	ACIS	ACIS	Obspar format version number	6	6
Detector	ACIS-01236	ACIS-01236	Obspar file type	PREDICTED	ACTUAL
Grating	NONE	NONE	Obspar update status	NONE	UPDATED
Data mode	VFAINT	VFAINT	On-chip summing requested	N	N
Observation mode	POINTING	POINTING	Subarray requested	NONE	NONE
Pointing RA	218.276600	218.2443018618143	Alternating exposures requested	N	N
Pointing Dec	33.049443	33.05348460855409	Primary exposure time	0.000000	3.1
Pointing Roll	140.783807	141.0101093003105			
SIM focus pos (mm)	-0.782348	-0.7809083437167272			
SIM defocus (mm)	0	0.001439871863259334			
SIM translation stage pos (mm)	-233.592463	-233.5874344608287			
SIM translation stage offset (mm)	0	-0.005018542100998502			
Observation start time	165598873.184000	165598496.70871			
Observation start date	2003-04-01T15:40:09	2003-04-01T15:34:56			
Observation end time	165603873.184000	165604006.59644			
Observation end date	2003-04-01T17:03:29	2003-04-01T17:06:46			
Read mode	TIMED	TIMED			

## 2.3 Aspect





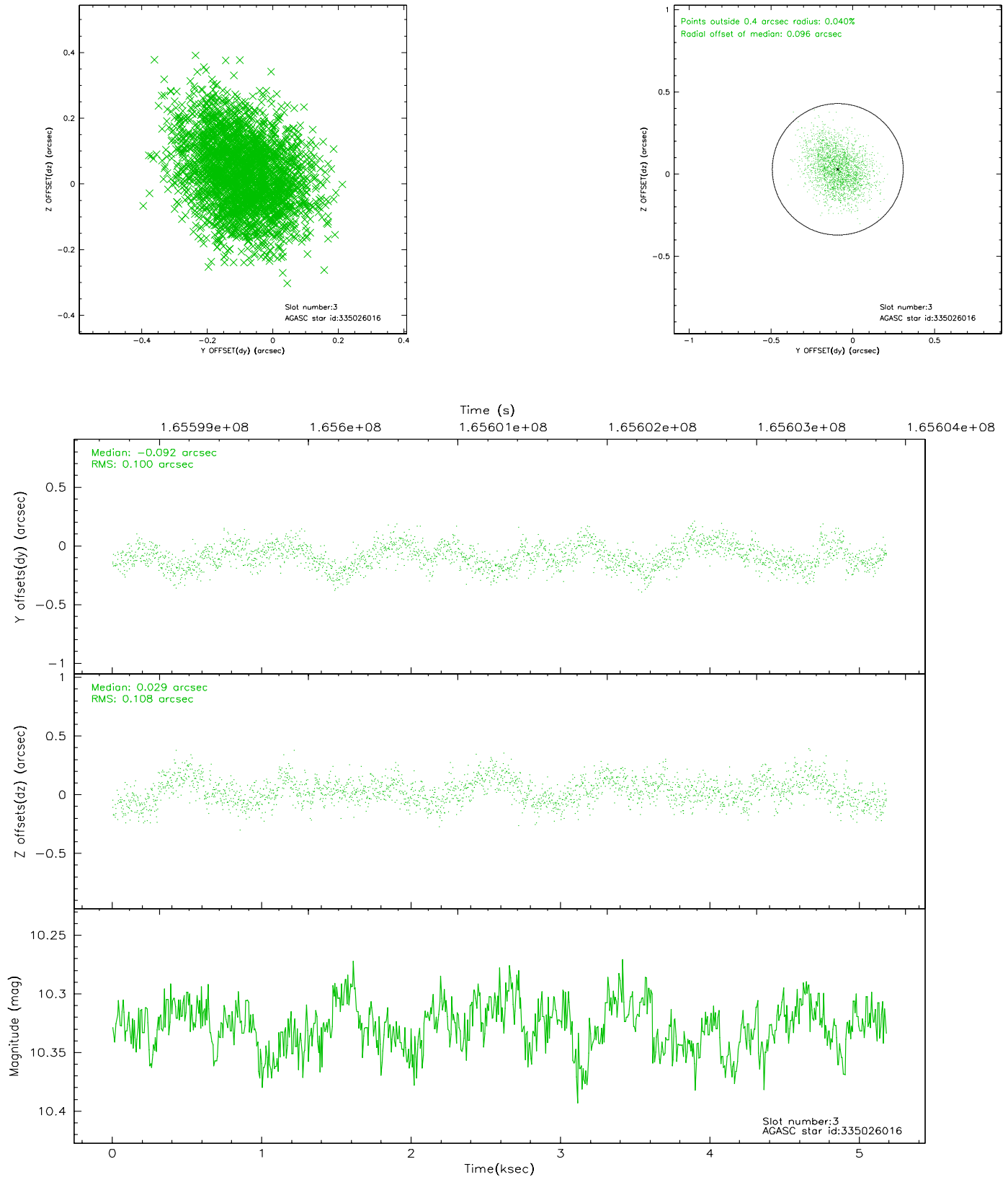
### Slot Statistics

slot	status	id	mag	n_pts	med_dy	med_dz	dr1	dr2	ra	dec	mean_y	mean_z
0	FID	ACIS-I-1	7.25	1264	0.049	-0.050	0.006	0.010	0.000000	0.000000	937.19	-830.03
1	FID	ACIS-I-5	7.24	1264	0.107	0.138	0.006	0.010	0.000000	0.000000	-1810.28	1066.96
2	FID	ACIS-I-6	7.25	1264	-0.248	-0.018	0.006	0.011	0.000000	0.000000	401.07	1712.72
3	GUIDE	335026016	10.33	2514	-0.092	0.029	0.158	0.251	218.407506	33.416168	531.53	-1271.79
4	GUIDE	335027600	10.42	2527	-0.046	0.004	0.180	0.302	218.618512	33.447101	112.23	-1760.54
5	GUIDE	335028616	10.04	2509	0.273	0.094	0.272	0.372	218.529874	33.175085	-303.30	-834.56
6	GUIDE	335029384	8.49	2528	-0.119	-0.081	0.104	0.153	217.848061	33.088477	1092.10	706.11
7	GUIDE	335029528	10.41	2461	-0.012	-0.064	0.161	0.281	218.786422	33.290416	-635.75	-1645.40

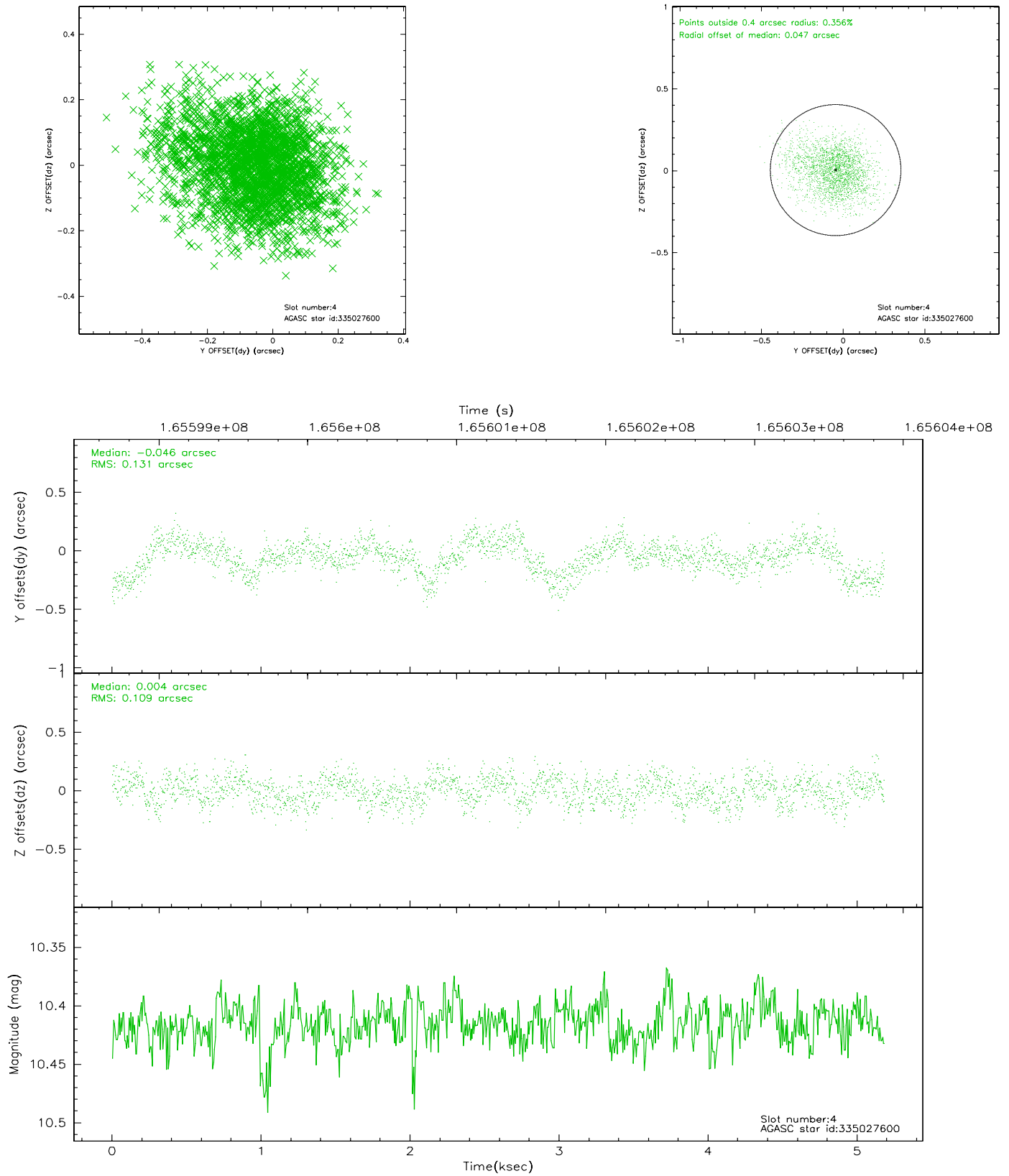


## 2.4 Star Slots

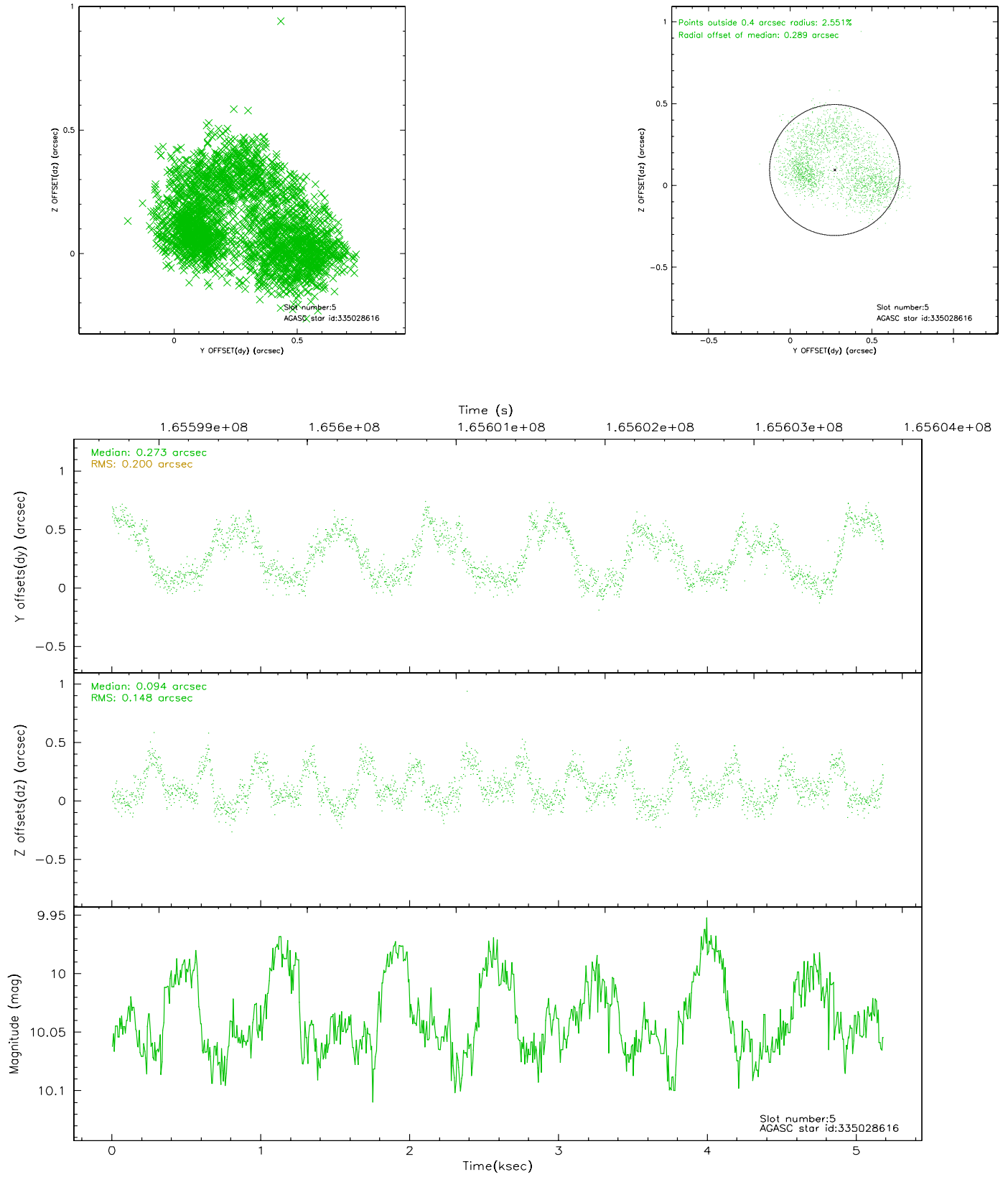
### 2.4.1 Slot 3



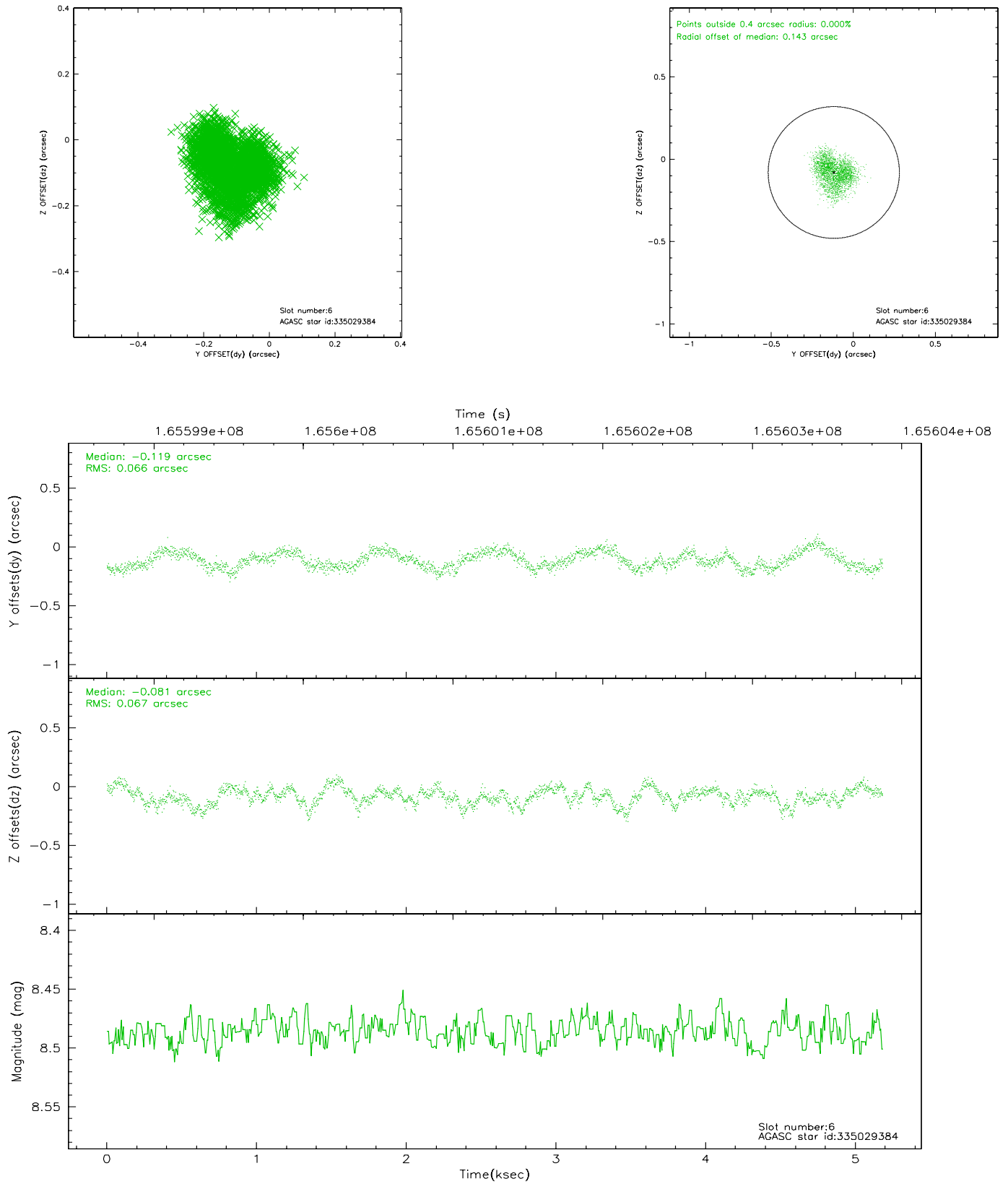
## 2.4.2 Slot 4



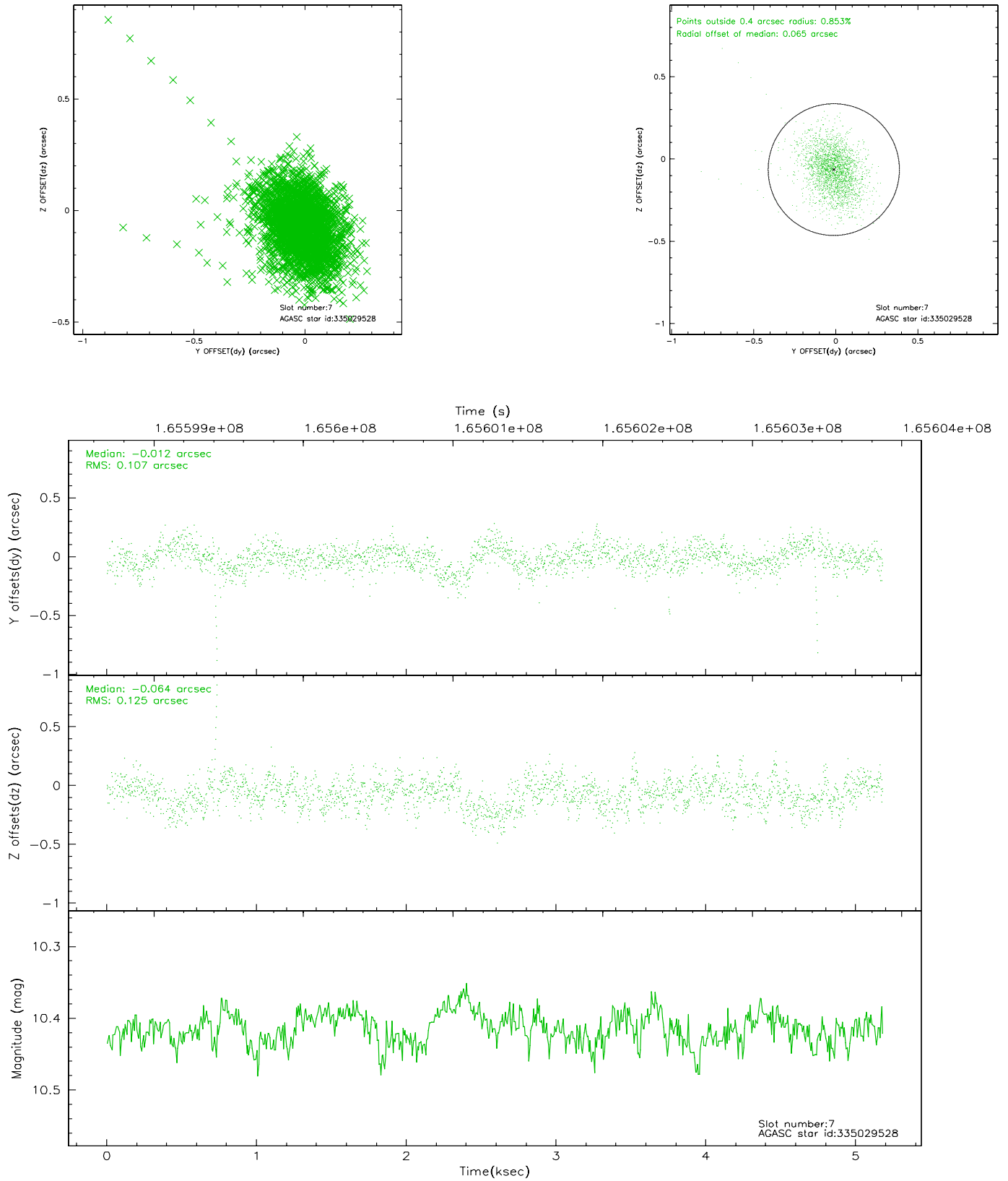
### 2.4.3 Slot 5



## 2.4.4 Slot 6

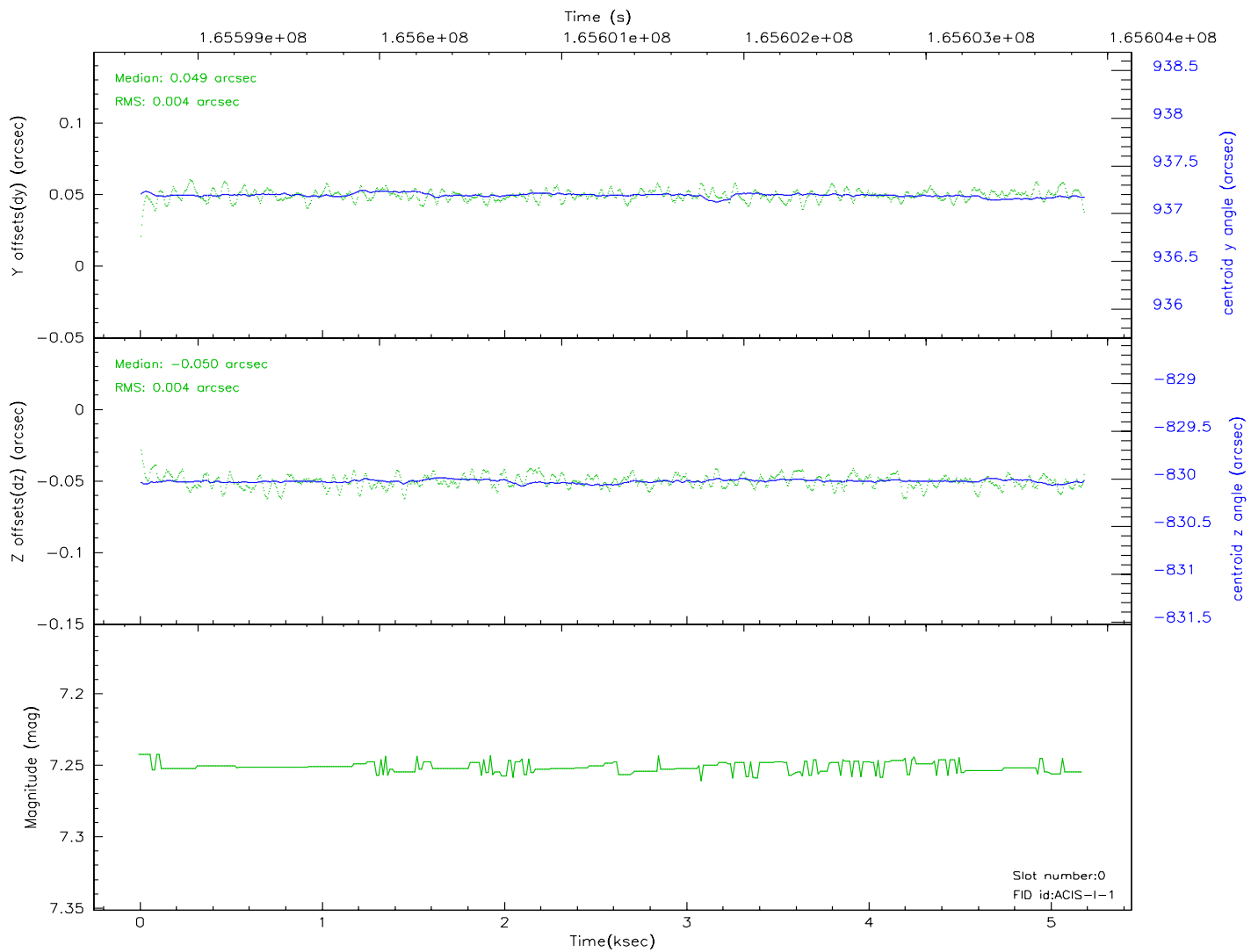
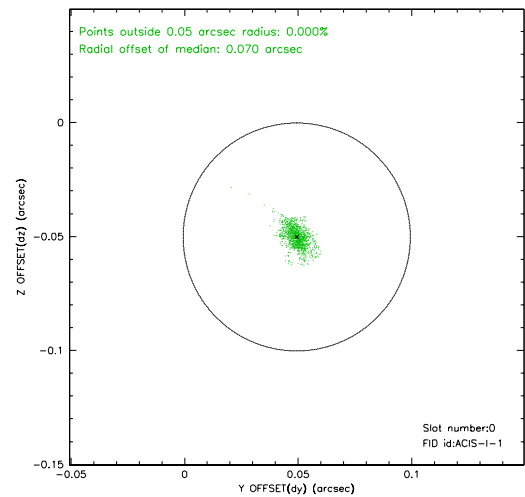
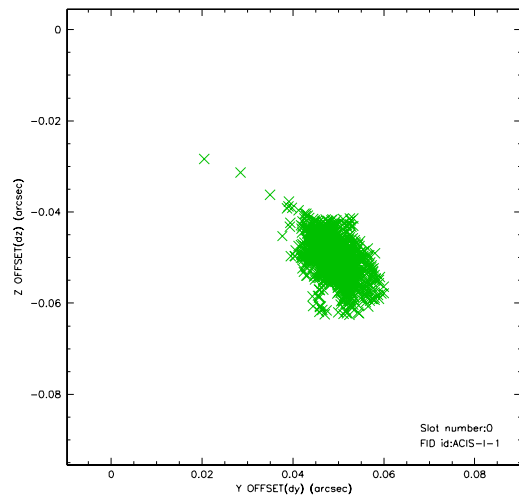


## 2.4.5 Slot 7

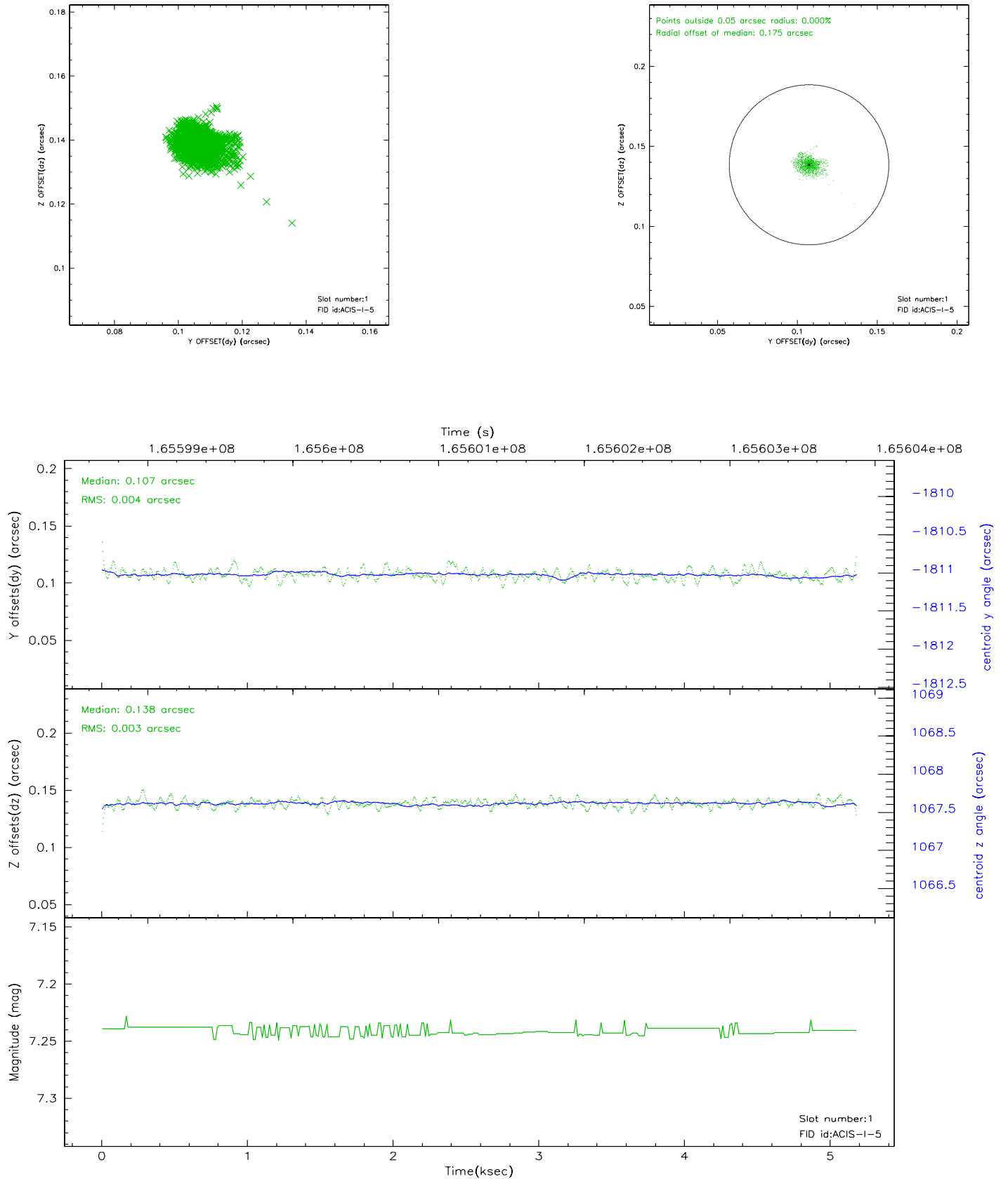


## 2.5 FID Slots

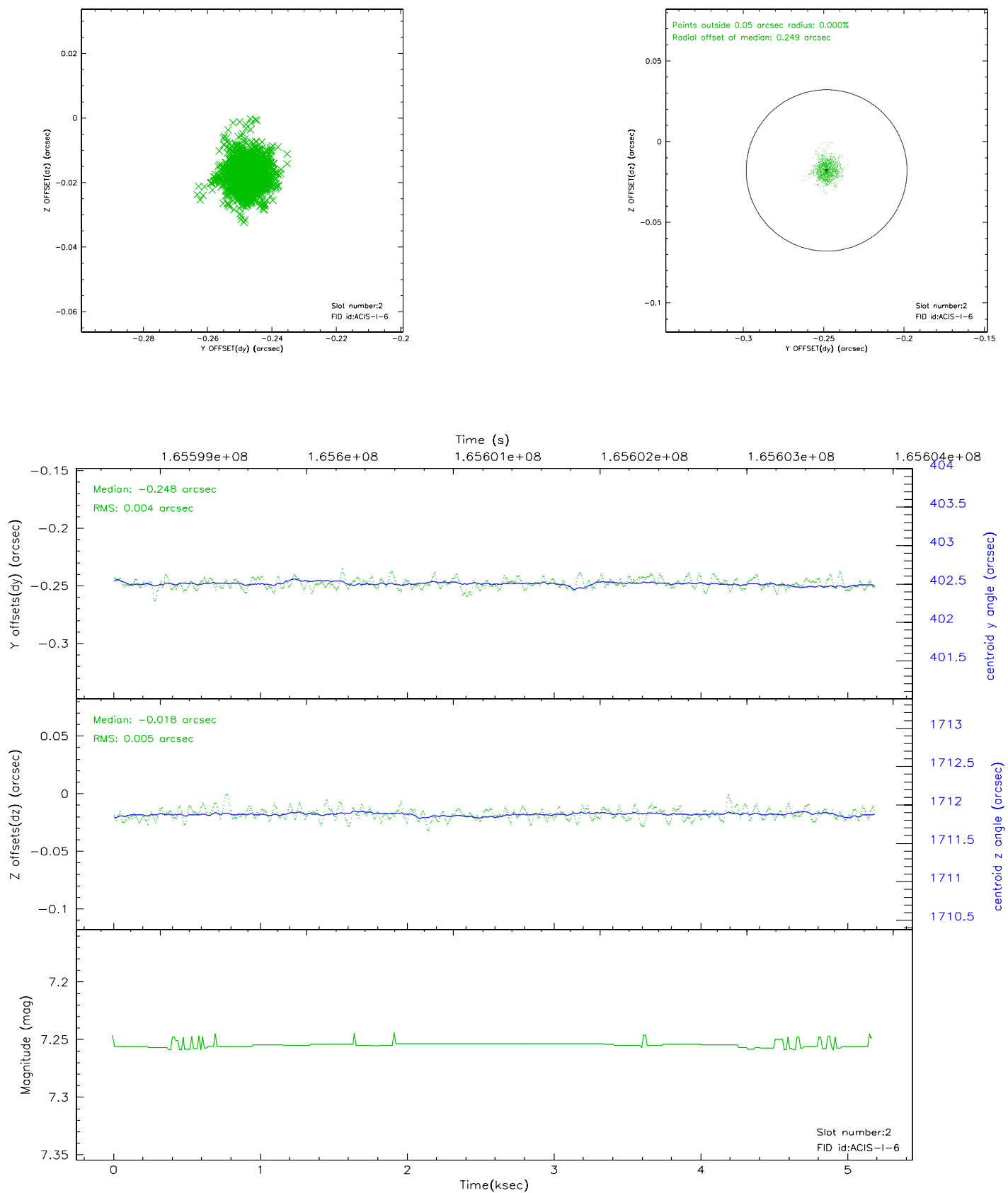
### 2.5.1 Slot 0



## 2.5.2 Slot 1



### 2.5.3 Slot 2





### 3 Point Sources

8.66 arcmin



## A Summary

### A.1 Status

V&V Scientist	Jen Lauer
V&V Date (YYYY-MM-DD)	2006.07.30
V&V Edition	1
V&V Disposition and Status	OK
V&V Charge Time	4.777

### A.2 Comments