

# V&V Reference Report

## L2 ASCDS Version : 8.4.5

Observation 4260 - L2 Version 3  
Chandra X-Ray Center

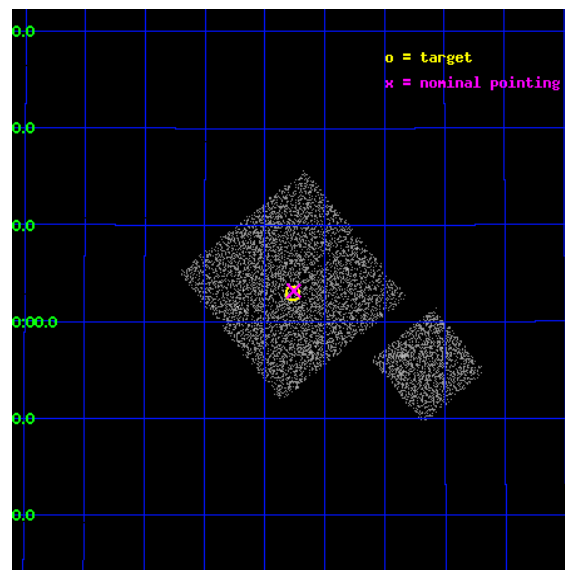
L2 Processing Date : Oct 25 2012

## Contents

<b>1</b>	<b>Front</b>	<b>2</b>
<b>2</b>	<b>OBI</b>	<b>3</b>
2.1	OBI . . . . .	3
2.1.1	Images . . . . .	3
2.1.2	Bias . . . . .	3
2.1.3	Parameters . . . . .	4
2.1.4	Events . . . . .	4
2.2	Compared Parameters . . . . .	5
2.3	Aspect . . . . .	6
2.4	Star Slots . . . . .	9
2.4.1	Slot 3 . . . . .	9
2.4.2	Slot 4 . . . . .	10
2.4.3	Slot 5 . . . . .	11
2.4.4	Slot 6 . . . . .	12
2.4.5	Slot 7 . . . . .	13
2.5	FID Slots . . . . .	14
2.5.1	Slot 0 . . . . .	14
2.5.2	Slot 1 . . . . .	15
2.5.3	Slot 2 . . . . .	16
<b>A</b>	<b>Summary</b>	<b>17</b>
A.1	Status . . . . .	17
A.2	Comments . . . . .	17

# 1 Front

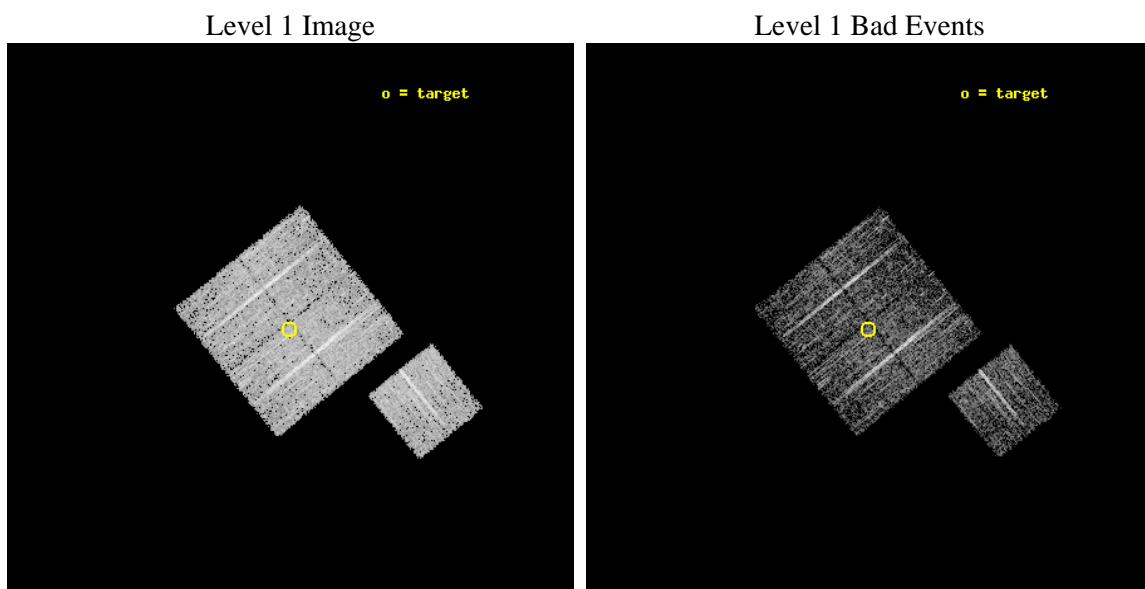
seq_num	900303	Sequence number
obs_id	4260	Observation id
title	A CHANDRA WIDE-FIELD SURVEY TO MAP THE COSMIC WEB AND INVESTIGATE THE EVOLUTION OF NUCLEAR ACCRETION	Proposal title
observer	Dr. Christine Jones	Principal investigator
object	SS31	Source name
dtcycle	0	&#160
cycle	P	events from which exps? Prim/Second/Both
ra_targ	217.816997	Observer's specified target RA [deg]
dec_targ	33.04953	Observer's specified target Dec [deg]
ra_nom	217.81434524201	Nominal RA [deg]
dec_nom	33.053593597793	Nominal Dec [deg]
roll_nom	141.01014113819	Nominal Roll [deg]
revision	3	Processing version of data
ontime	4670.8628088832	Sum of GTIs [s]
livetime	4609.834547646	Livetime [s]
ontime0	4670.7396789789	Sum of GTIs [s]
ontime1	4667.6397486627	Sum of GTIs [s]
ontime2	4670.8217688799	Sum of GTIs [s]
ontime3	4670.8628088832	Sum of GTIs [s]
ontime6	4670.69864887	Sum of GTIs [s]
l2events	9454	Number of level 2 events



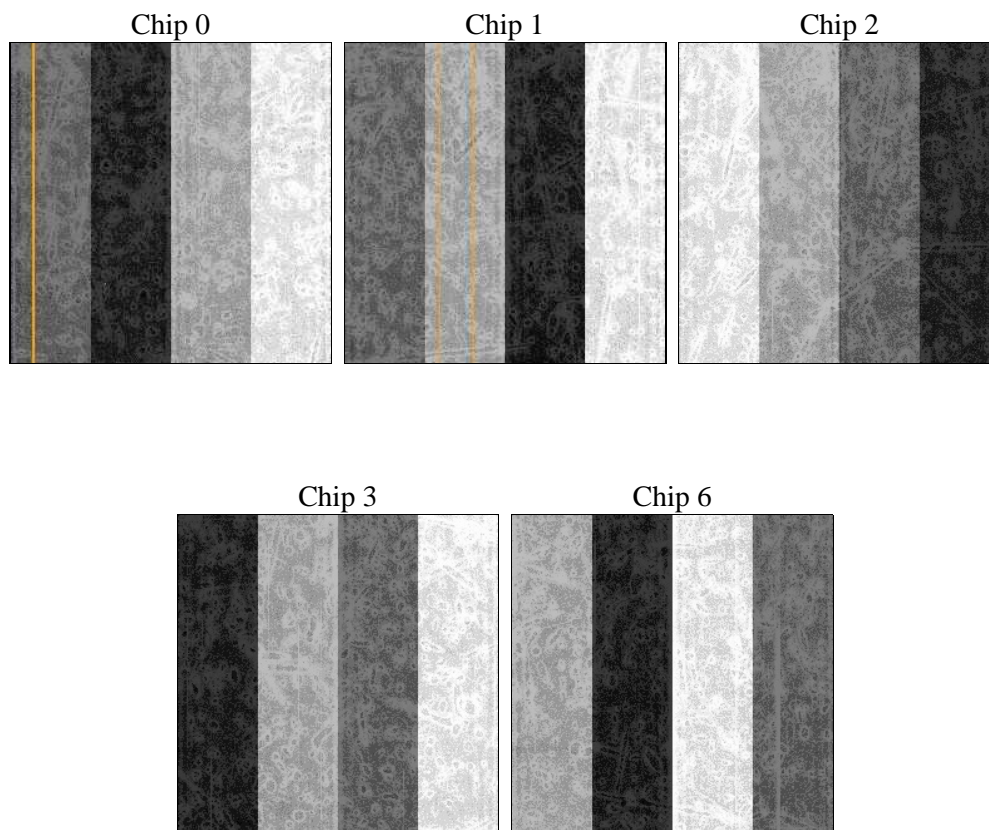
## 2 OBI

### 2.1 OBI

#### 2.1.1 Images



#### 2.1.2 Bias



### 2.1.3 Parameters

obi_num	1	Obi number	sched_exp_time	4900.000000	[s] Scheduled observation exposure time
ascdsver	8.4.5	Processing system revision	ontime	4670.8628088832	Sum of GTIs [s]
caldsver	4.5.2	&#160	ontime0	4670.7396789789	Sum of GTIs [s]
date	2012-10-25T15:28:54	Date and time of file creation	ontime1	4667.6397486627	Sum of GTIs [s]
revision	3	Processing version of data	ontime2	4670.8217688799	Sum of GTIs [s]
			ontime3	4670.8628088832	Sum of GTIs [s]
			ontime6	4670.69864887	Sum of GTIs [s]
			l1events	112113	Number of level 1 events

### 2.1.4 Events

	ccd 0	ccd 1	ccd 2	ccd 3	ccd 6
level 1 events	21235	20996	23697	23563	22622
rejected events	18962	18528	21496	21451	20246
rejected %	89%	88%	90%	91%	89%

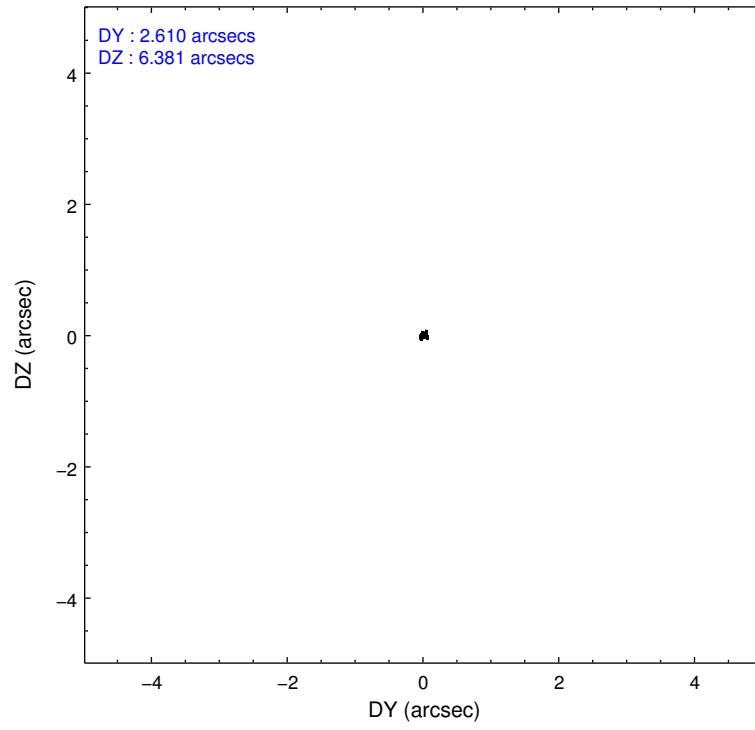
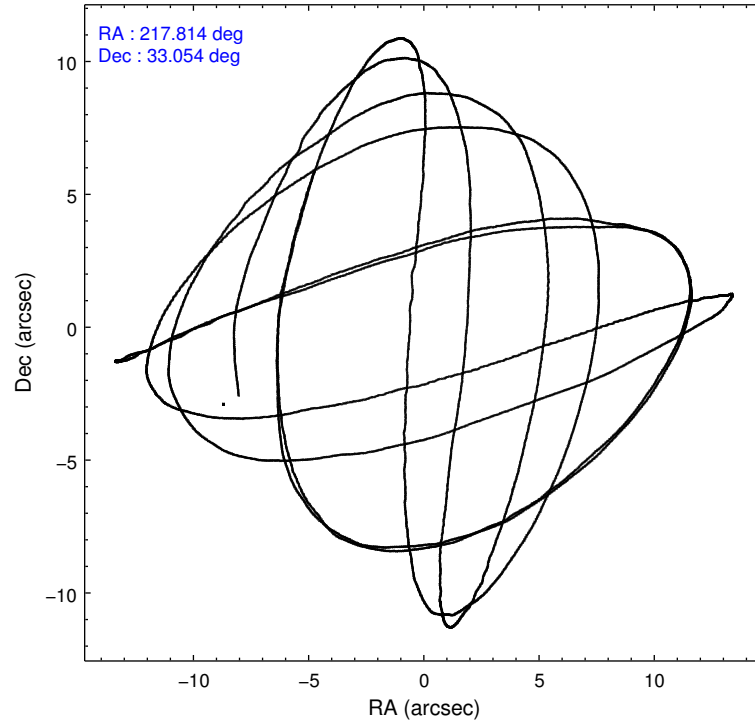
	ccd 0	ccd 1	ccd 2	ccd 3	ccd 6
grade 0 events	801	948	862	804	909
	3%	4%	3%	3%	4%
grade 1 events	14	7	9	15	9
	0%	0%	0%	0%	0%
grade 2 events	512	502	451	410	508
	2%	2%	1%	1%	2%
grade 3 events	277	263	239	254	267
	1%	1%	1%	1%	1%
grade 4 events	266	281	249	236	276
	1%	1%	1%	1%	1%
grade 5 events	651	721	651	751	738
	3%	3%	2%	3%	3%
grade 6 events	424	479	402	411	419
	1%	2%	1%	1%	1%
grade 7 events	18290	17795	20834	20682	19496
	86%	84%	87%	87%	86%

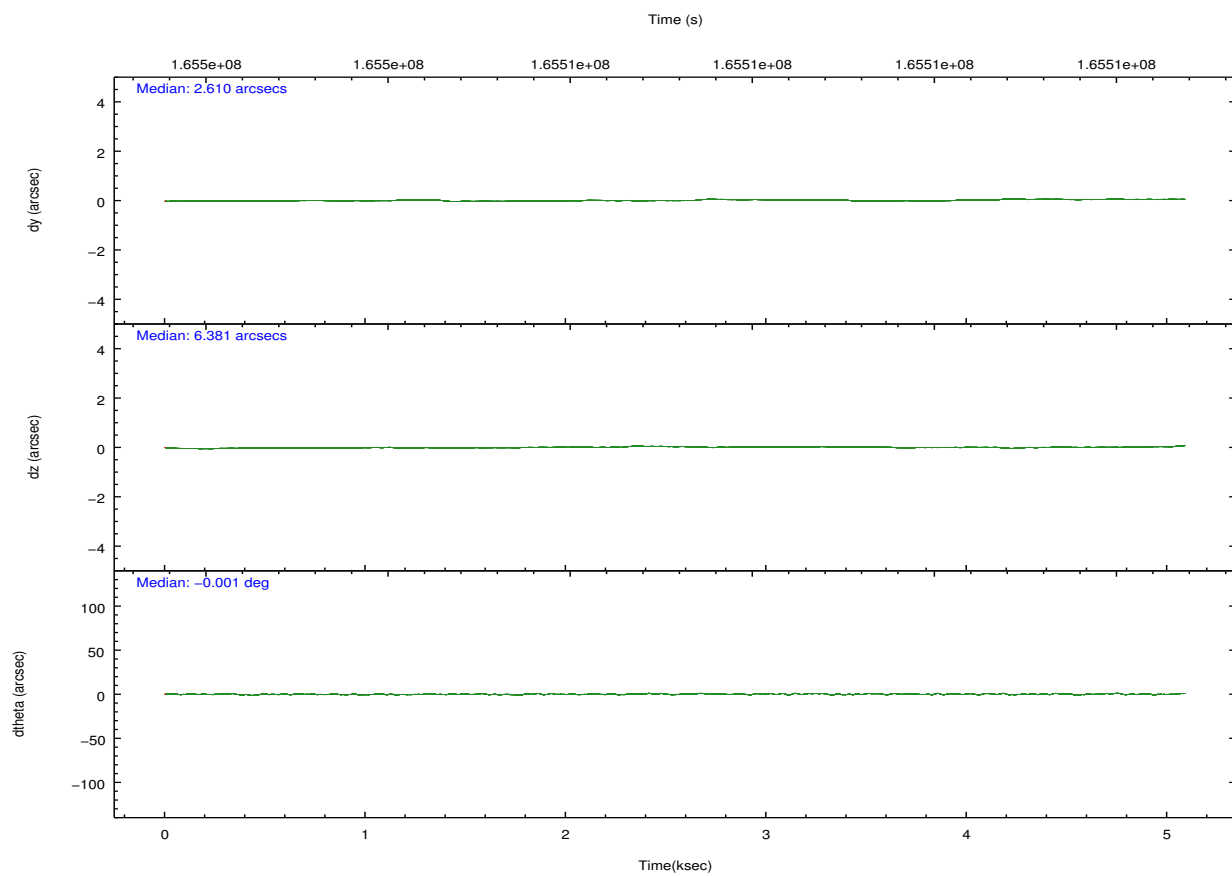
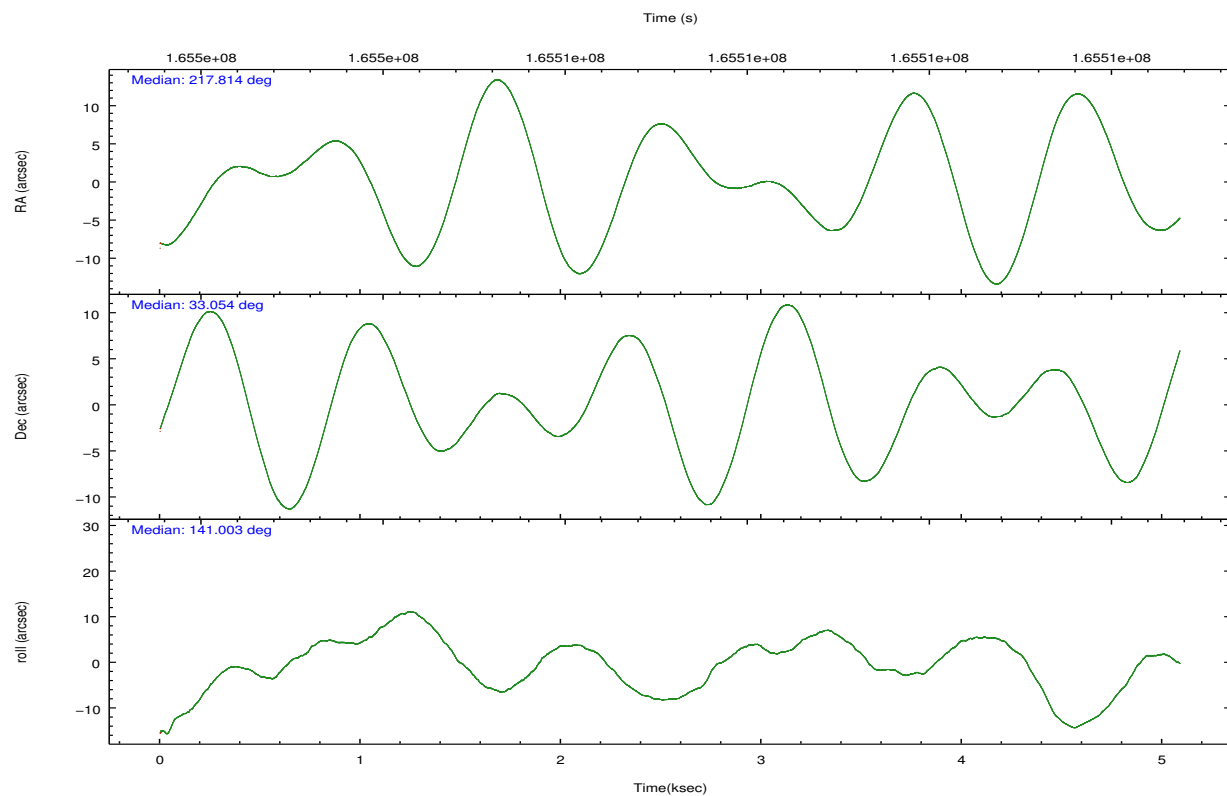


## 2.2 Compared Parameters

Parameter	Planned	Actual	Parameter	Planned	Actual
Instrument	ACIS	ACIS	Obspar format version number	7	7
Detector	ACIS-01236	ACIS-01236	Obspar file type	PREDICTED	ACTUAL
Grating	NONE	NONE	Obspar update status	NONE	UPDATED
Data mode	VFAINT	VFAINT	Number of optional ACIS chips dropped	0	0
Observation mode	POINTING	POINTING	On-chip summing requested	N	N
[deg] Pointing RA	217.846682	217.8143452420071	Subarray requested	NONE	NONE
[deg] Pointing Dec	33.049455	33.0535935977932	Alternating exposures requested	N	N
[deg] Pointing Roll	140.783811	141.010141138193	[s] Primary exposure time	0.000000	3.1
[mm] SIM focus pos	-0.782348	-0.7809083437167272			
[mm] SIM defocus	0	0.001439871863259334			
[mm] SIM translation stage pos	-233.592463	-233.5874344608287			
[mm] SIM translation stage offset	0	-0.005018542100998502			
[s] Observation start time (MET)	165504224.184000	165503848.20472			
Observation start date	2003-03-31T13:22:40	2003-03-31T13:17:28			
[s] Observation end time (MET)	165509124.184000	165509258.15494			
Observation end date	2003-03-31T14:44:20	2003-03-31T14:47:38			
Read mode	TIMED	TIMED			

## 2.3 Aspect



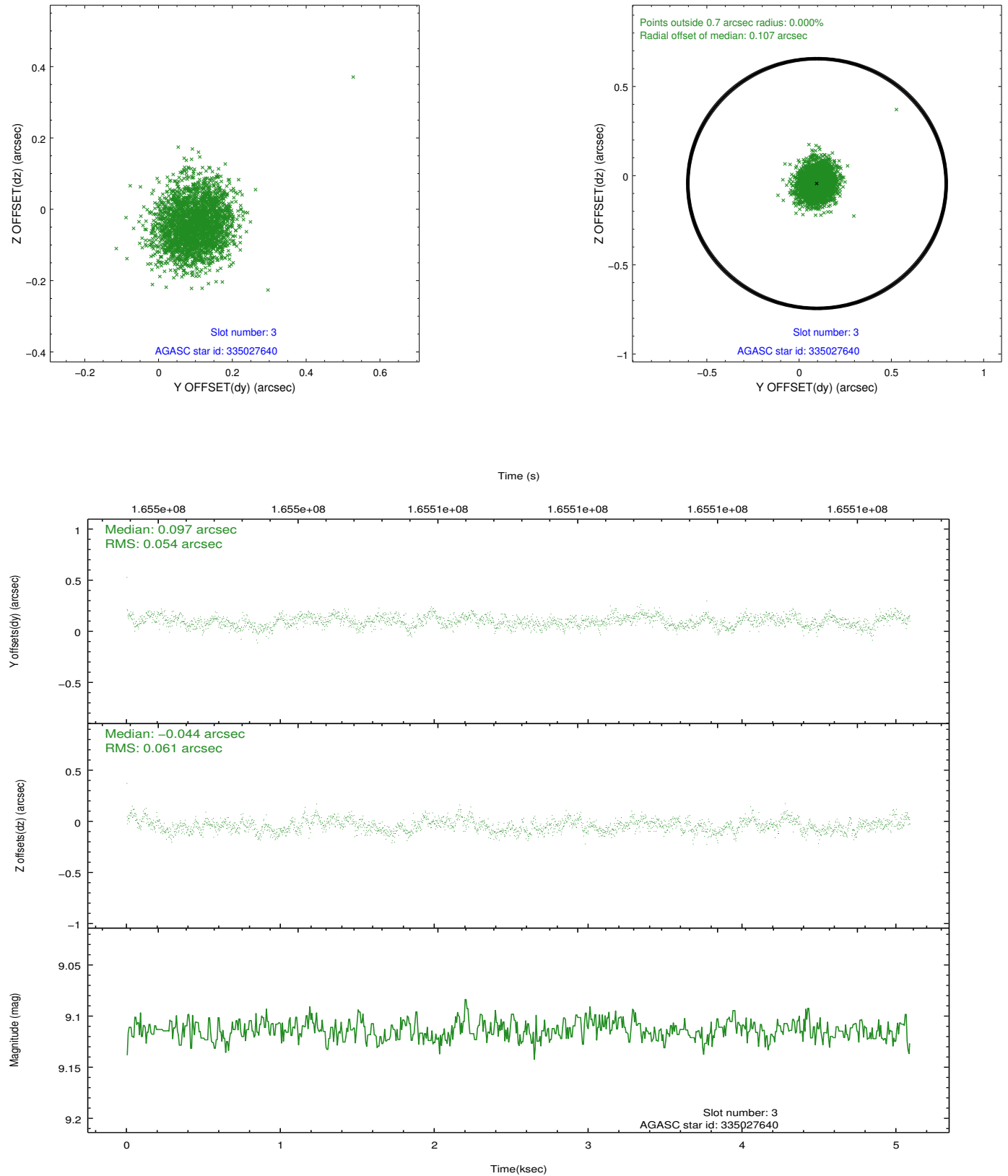


### Slot Statistics

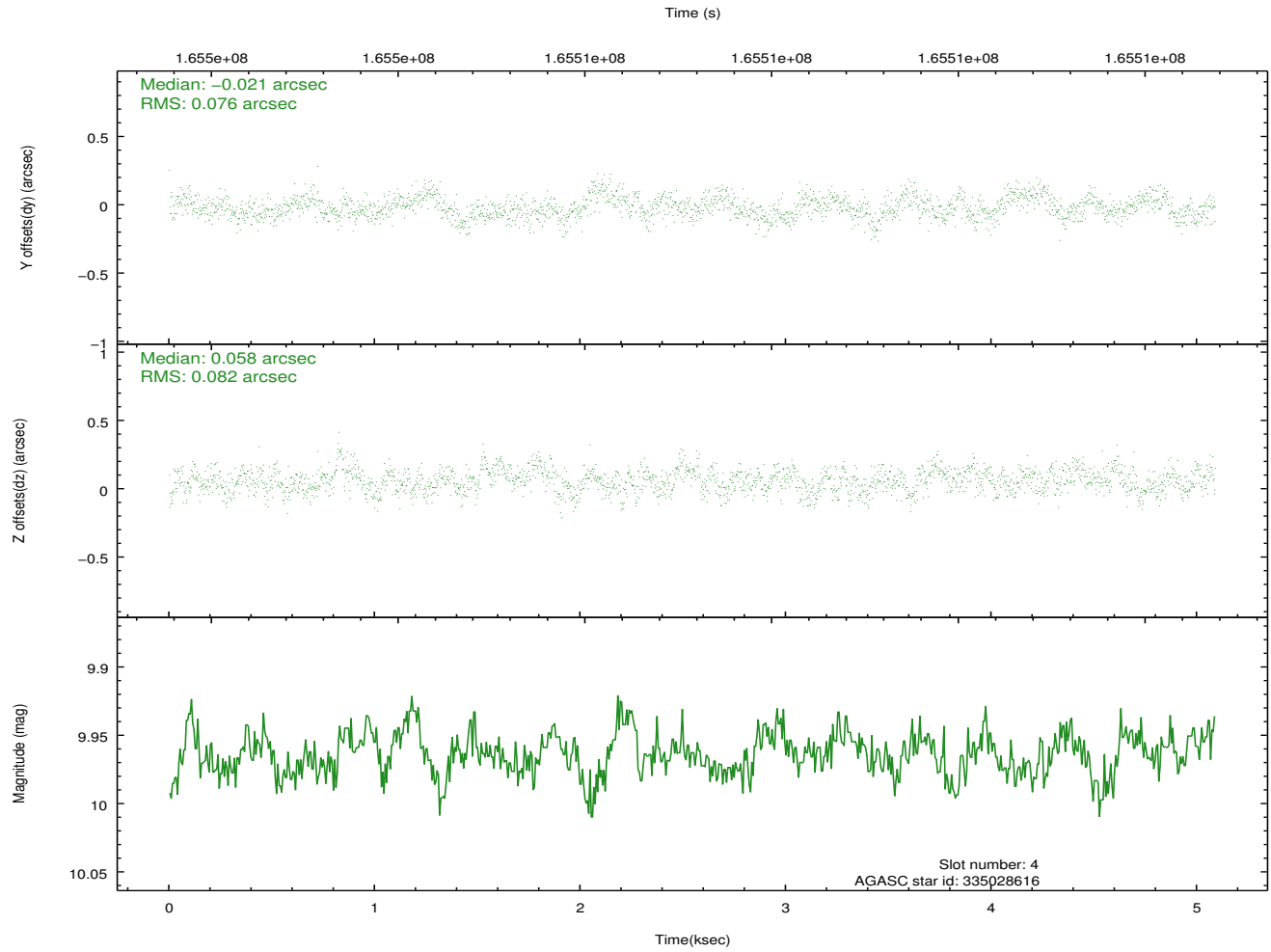
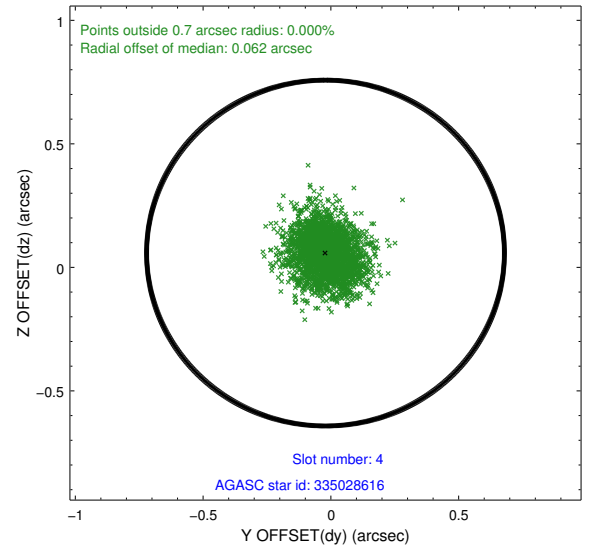
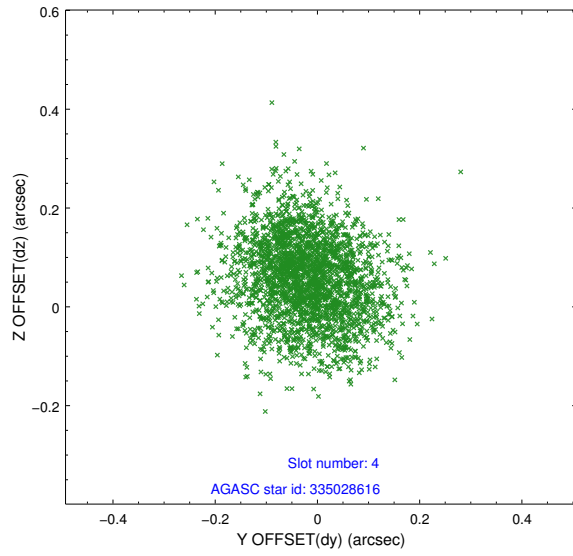
slot	status	id	mag	n_pts	med_dy	med_dz	dr1	dr2	ra	dec	mean_y	mean_z
0	FID	ACIS-I-1	7.25	1242	0.010	-0.006	0.006	0.010	0.000000	0.000000	937.18	-829.77
1	FID	ACIS-I-5	7.24	1242	-0.079	0.049	0.006	0.010	0.000000	0.000000	-1810.32	1067.22
2	FID	ACIS-I-6	7.26	1242	-0.022	0.026	0.006	0.010	0.000000	0.000000	401.44	1713.02
3	GUIDE	335027640	9.11	2483	0.097	-0.044	0.086	0.137	218.092211	33.193770	-243.64	-870.96
4	GUIDE	335028616	9.96	2482	-0.021	0.058	0.120	0.194	218.529874	33.175085	-1304.74	-1657.47
5	GUIDE	335029368	10.16	2481	-0.074	-0.024	0.112	0.182	217.181018	33.065030	1594.90	1220.86
6	GUIDE	335029384	8.49	2483	-0.024	0.036	0.079	0.130	217.848061	33.088477	86.30	-110.93
7	GUIDE	335025848	9.72	2479	0.019	-0.031	0.129	0.206	217.530531	33.778292	2393.25	-1435.70

## 2.4 Star Slots

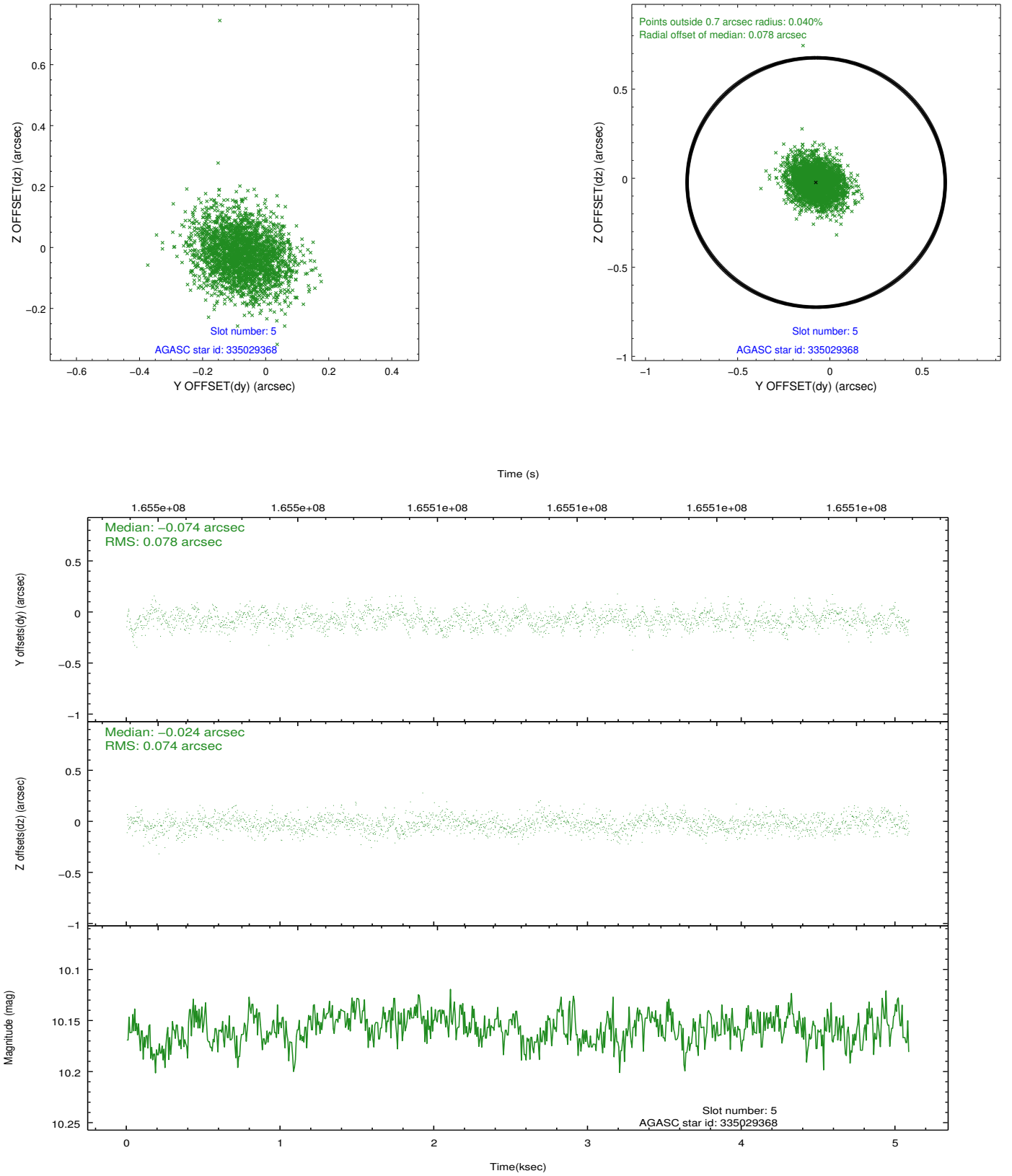
### 2.4.1 Slot 3



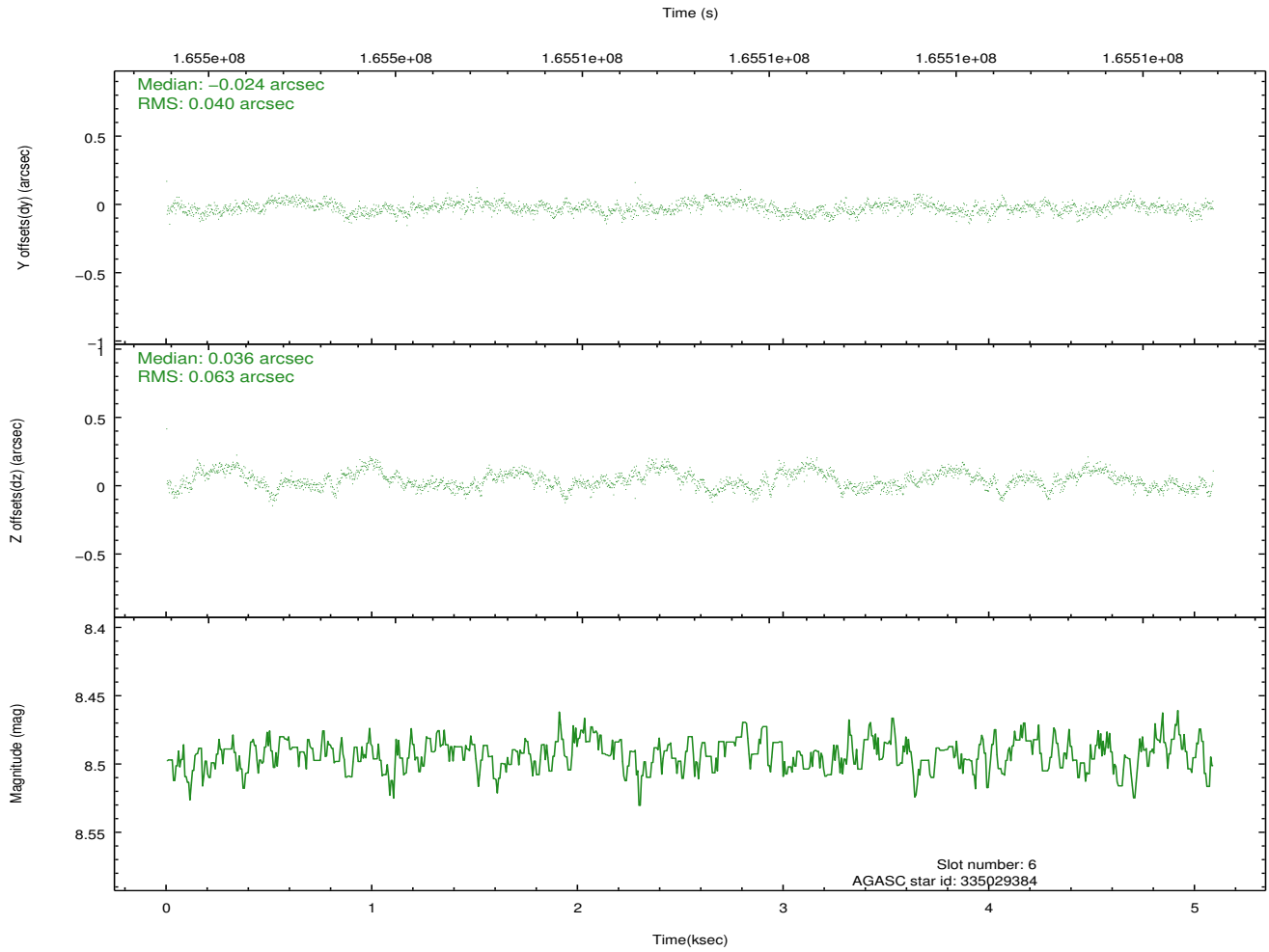
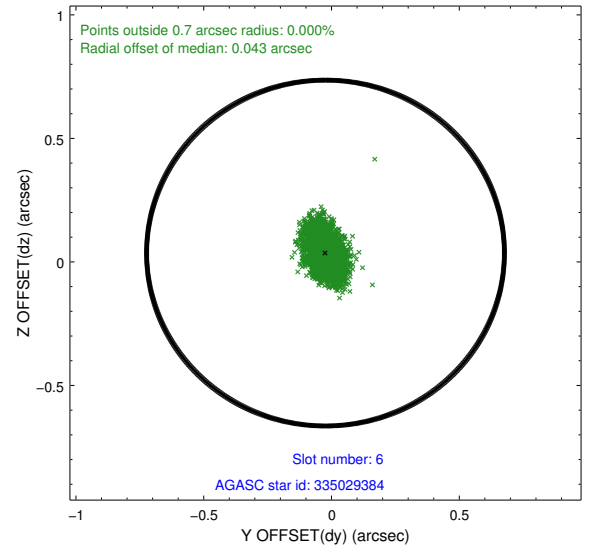
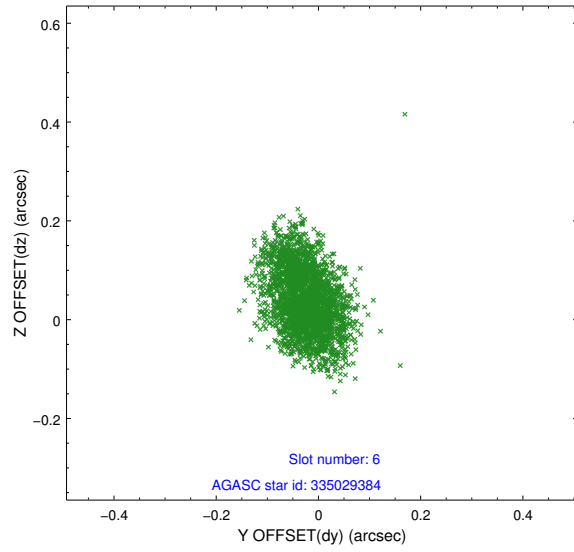
## 2.4.2 Slot 4



### 2.4.3 Slot 5

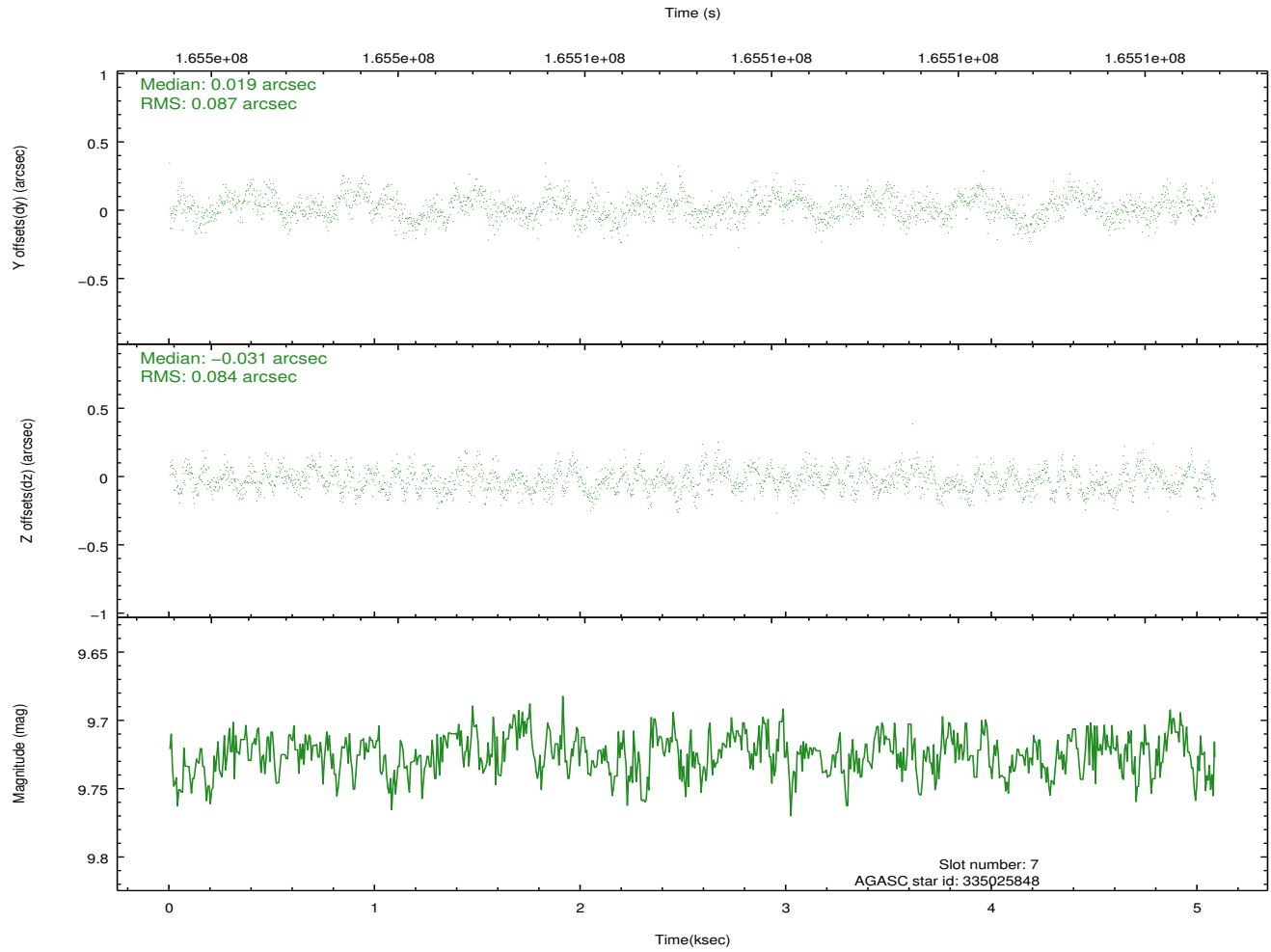
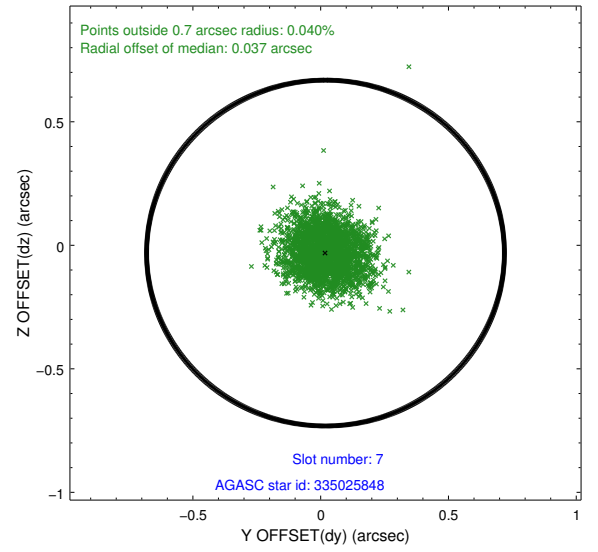
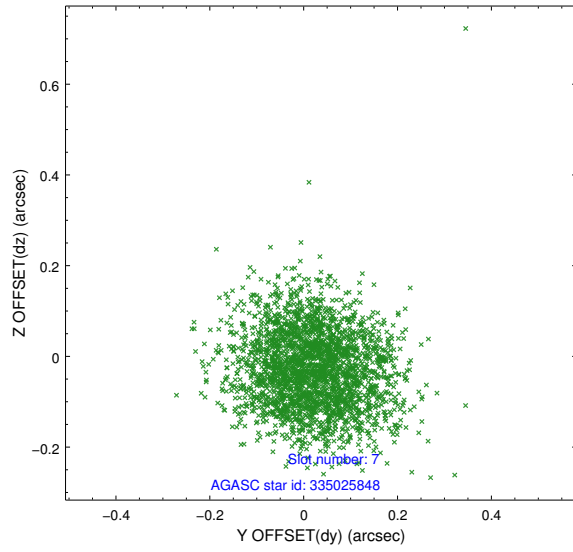


## 2.4.4 Slot 6



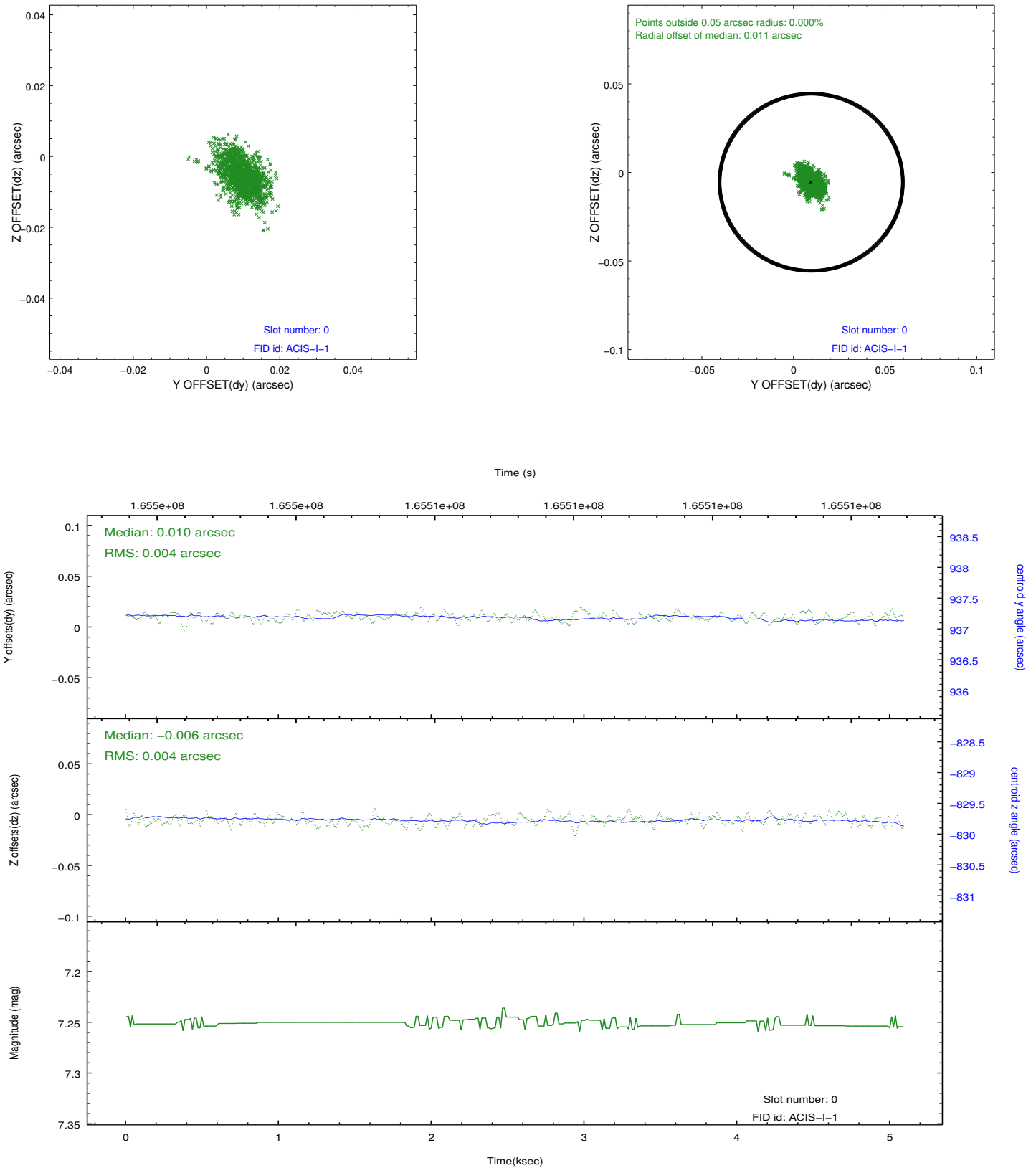


## 2.4.5 Slot 7

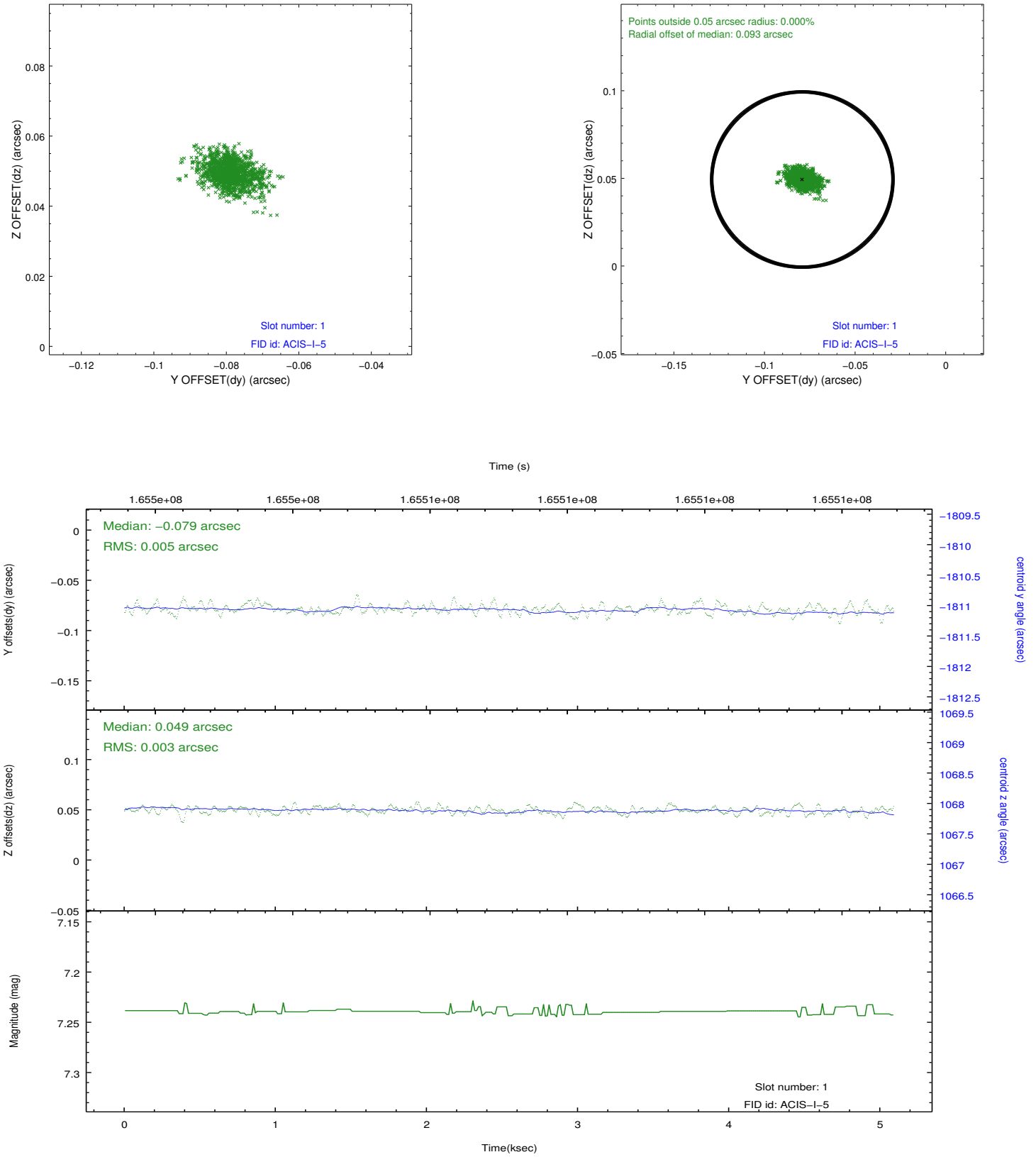


## 2.5 FID Slots

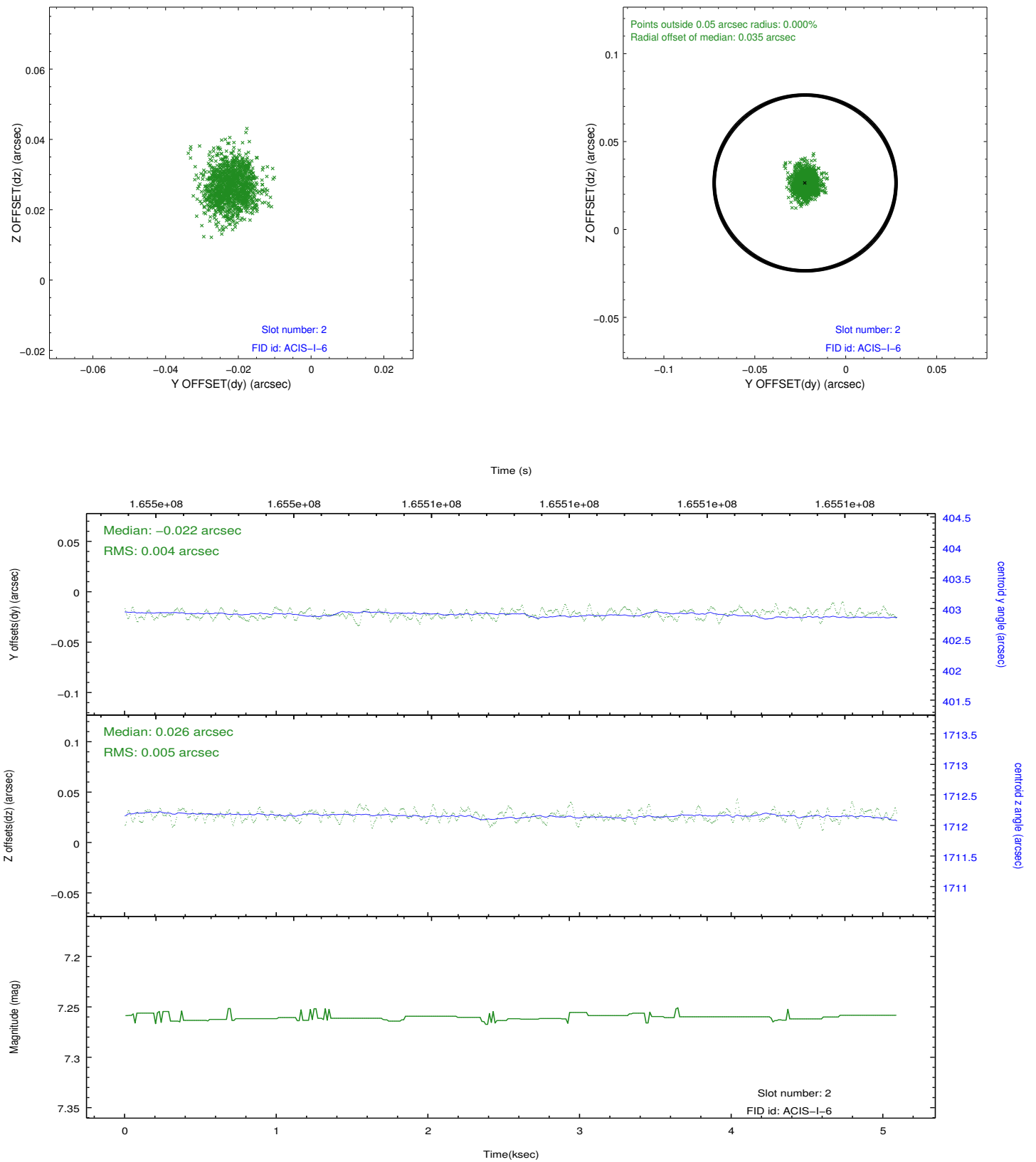
### 2.5.1 Slot 0



## 2.5.2 Slot 1



### 2.5.3 Slot 2



## A Summary

### A.1 Status

V&V Scientist	Jen Lauer
V&V Date (YYYY-MM-DD)	2012.11.09
V&V Edition	1
V&V Disposition and Status	OK
V&V Charge Time	4.671

### A.2 Comments