

V&V Reference Report

L2 ASCDS Version : 8.4.5

Observation 4257 - L2 Version 5
Chandra X-Ray Center

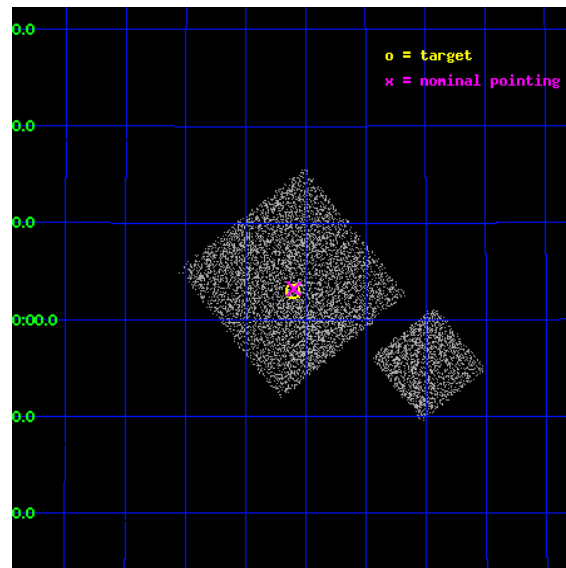
L2 Processing Date : Dec 28 2012

Contents

1	Front	2
2	OBI	3
2.1	OBI	3
2.1.1	Images	3
2.1.2	Bias	3
2.1.3	Parameters	4
2.1.4	Events	4
2.2	Compared Parameters	5
2.3	Aspect	6
2.4	Star Slots	9
2.4.1	Slot 3	9
2.4.2	Slot 4	10
2.4.3	Slot 5	11
2.4.4	Slot 6	12
2.5	FID Slots	13
2.5.1	Slot 0	13
2.5.2	Slot 1	14
2.5.3	Slot 2	15
A	Summary	16
A.1	Status	16
A.2	Comments	16

1 Front

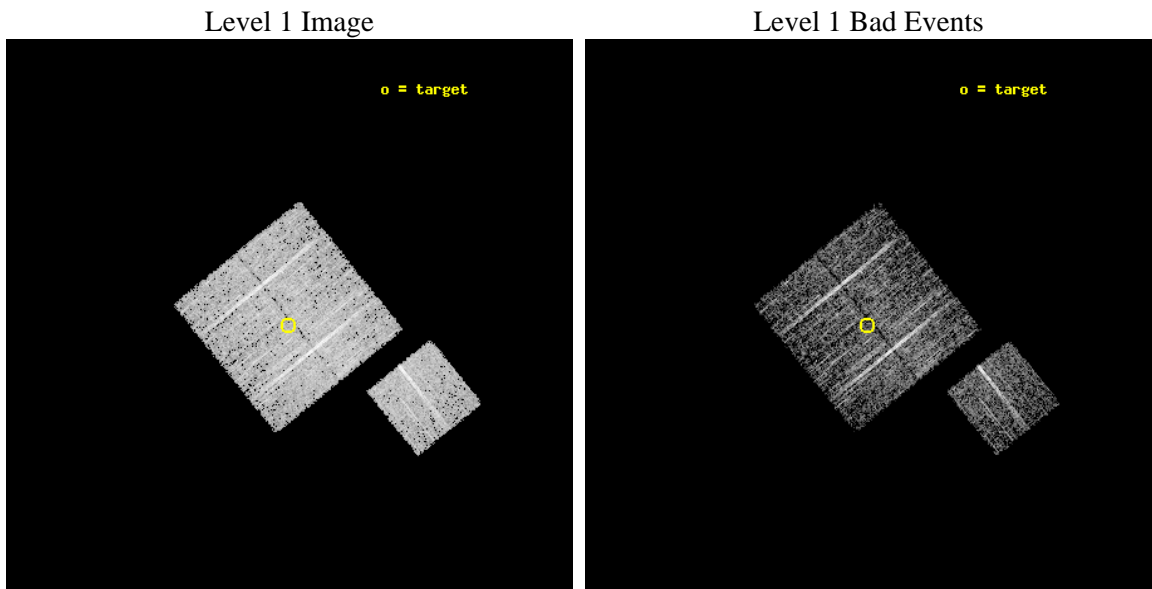
seq_num	900300	Sequence number
obs_id	4257	Observation id
title	A CHANDRA WIDE-FIELD SURVEY TO MAP THE COSMIC WEB AND INVESTIGATE THE EVOLUTION OF NUCLEAR ACCRETION	Proposal title
observer	Dr. Christine Jones	Principal investigator
object	SD52	Source name
dtcycle	0	
cycle	P	events from which exps? Prim/Second/Both
ra_targ	216.527246	Observer's specified target RA [deg]
dec_targ	33.04953	Observer's specified target Dec [deg]
ra_nom	216.52455981239	Nominal RA [deg]
dec_nom	33.05353510388	Nominal Dec [deg]
roll_nom	141.01015640091	Nominal Roll [deg]
revision	5	Processing version of data
ontime	4772.6614317	Sum of GTIs [s]
livetime	4710.3030965126	Livetime [s]
ontime0	4772.5383116901	Sum of GTIs [s]
ontime1	4769.4383415282	Sum of GTIs [s]
ontime2	4769.4794014692	Sum of GTIs [s]
ontime3	4772.6614317	Sum of GTIs [s]
ontime6	4772.4972716868	Sum of GTIs [s]
l2events	9681	Number of level 2 events



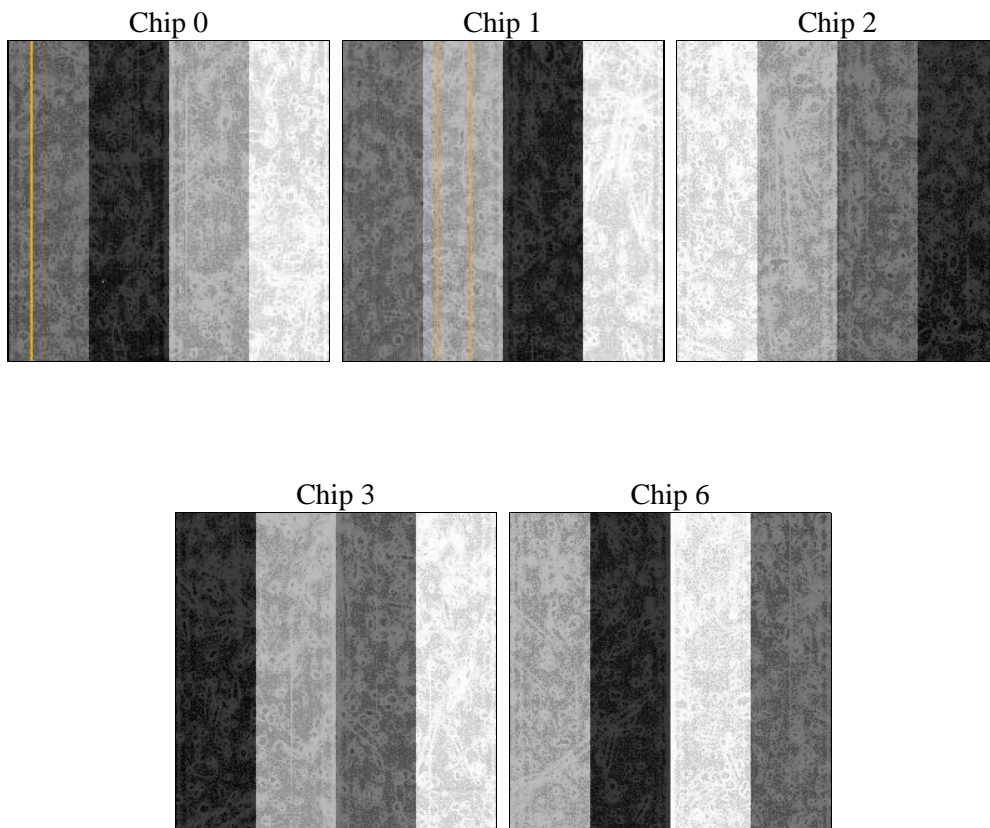
2 OBI

2.1 OBI

2.1.1 Images



2.1.2 Bias



2.1.3 Parameters

obi_num	0	Obi number	sched_exp_time	5000.000000	[s] Scheduled observation exposure time
ascdsver	8.5.1.1	Processing system revision	ontime	4772.6614317	Sum of GTIs [s]
caldsver	4.5.5	 	ontime0	4772.5383116901	Sum of GTIs [s]
date	2012-12-28T22:44:36	Date and time of file creation	ontime1	4769.4383415282	Sum of GTIs [s]
revision	5	Processing version of data	ontime2	4769.4794014692	Sum of GTIs [s]
			ontime3	4772.6614317	Sum of GTIs [s]
			ontime6	4772.4972716868	Sum of GTIs [s]
			l1events	118956	Number of level 1 events

2.1.4 Events

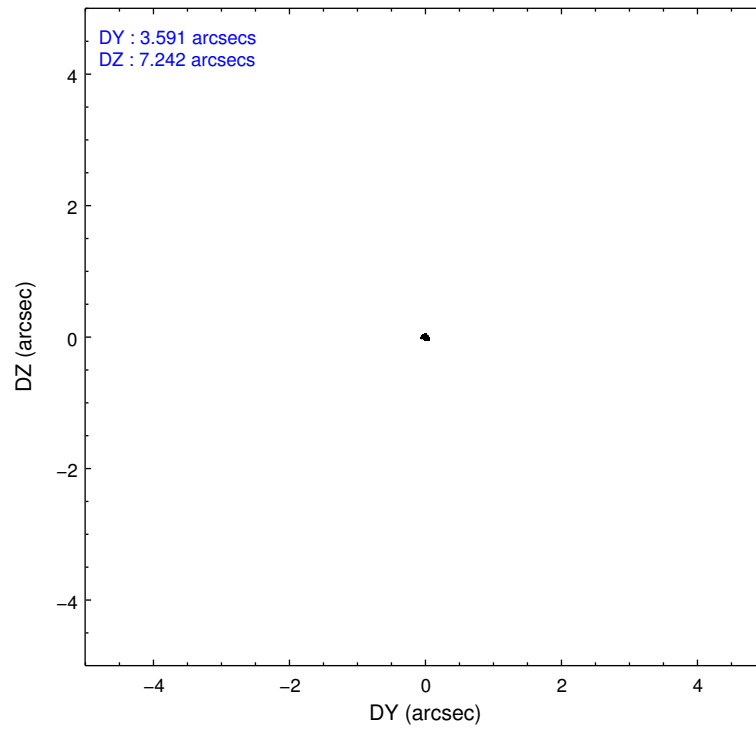
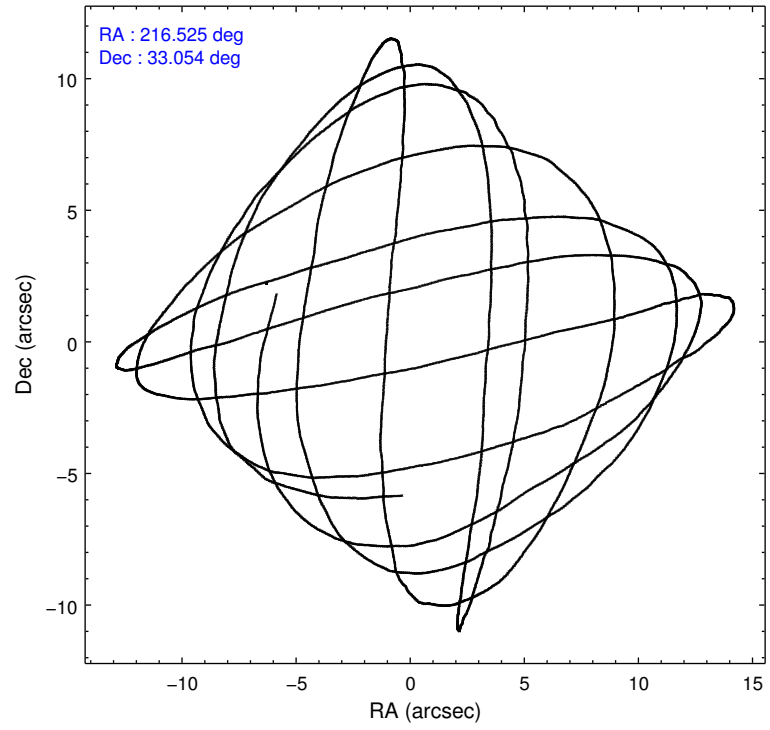
	ccd 0	ccd 1	ccd 2	ccd 3	ccd 6
level 1 events	22886	22498	26466	23992	23114
rejected events	20475	20031	24117	21768	20752
rejected %	89%	89%	91%	90%	89%

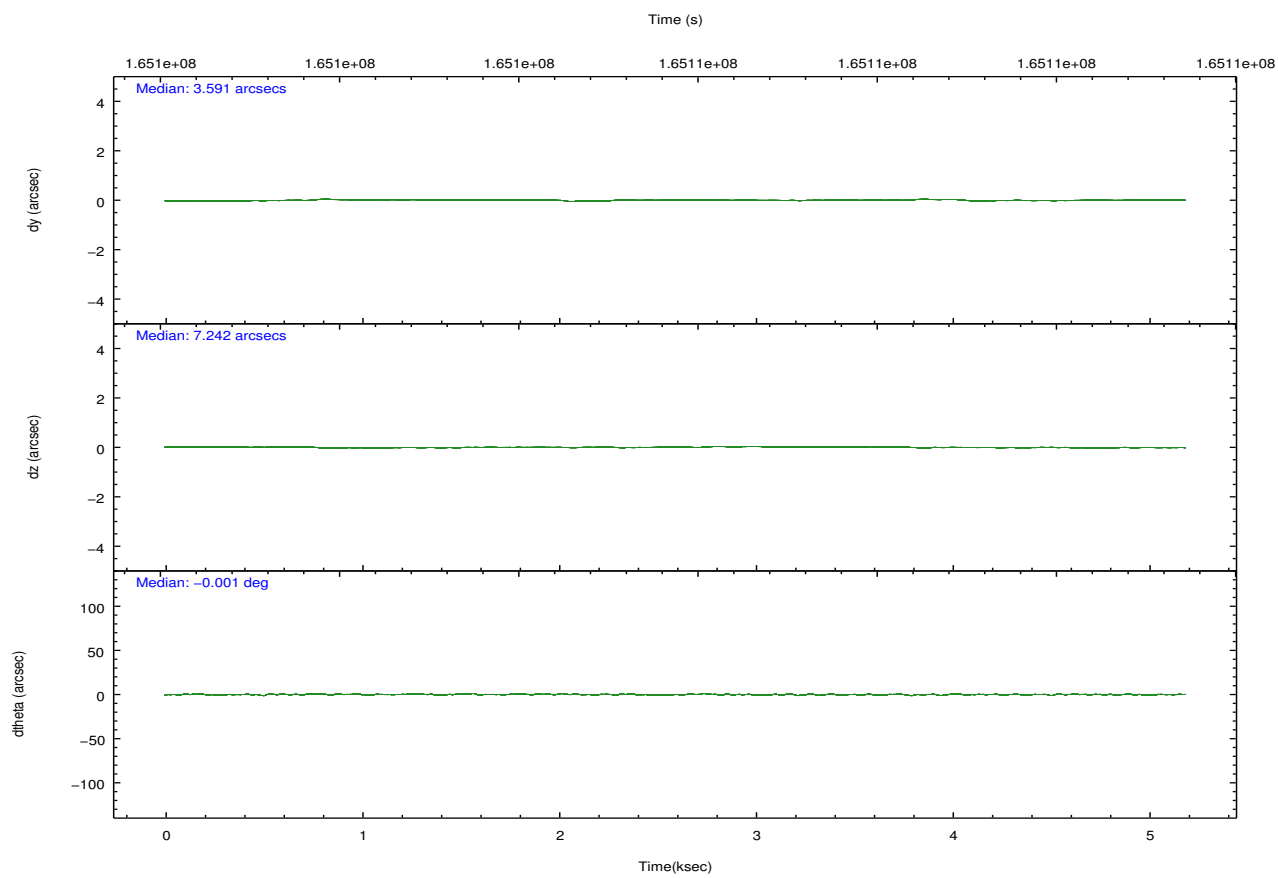
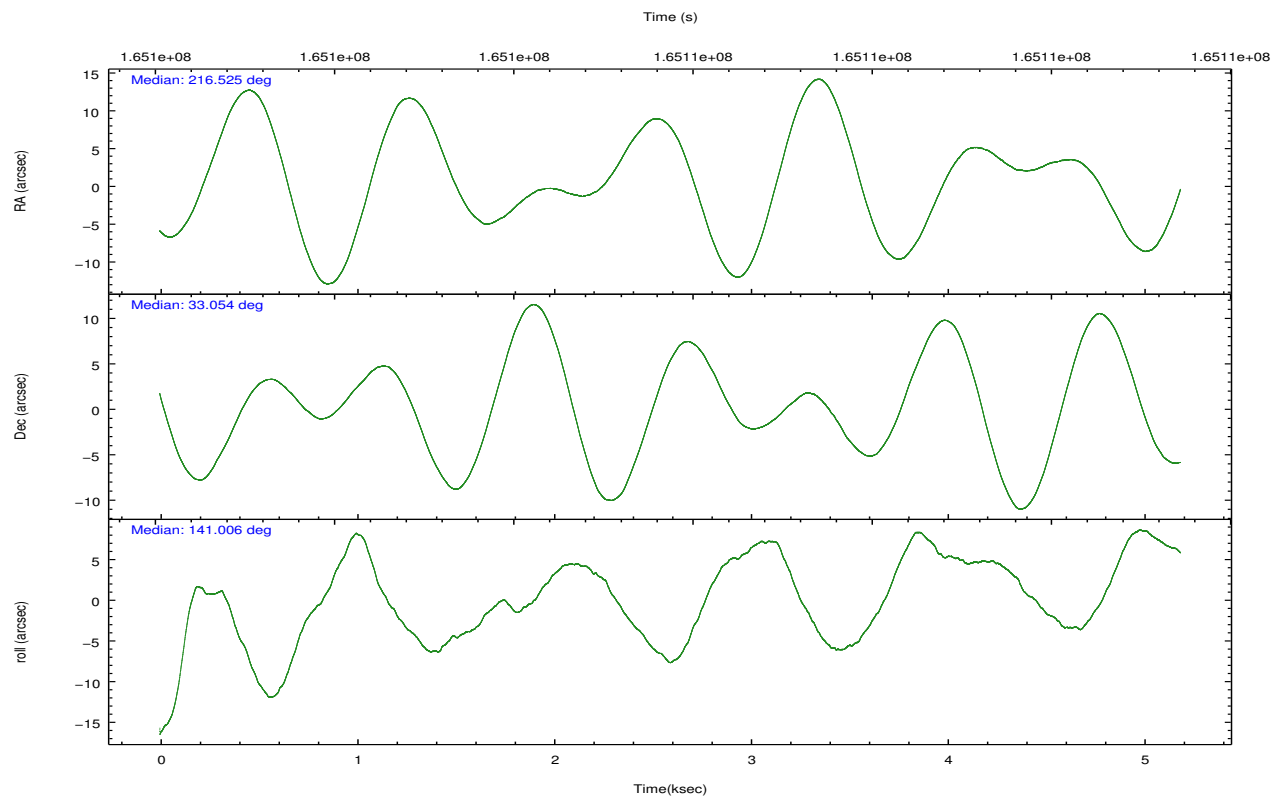
	ccd 0	ccd 1	ccd 2	ccd 3	ccd 6
grade 0 events	870	883	919	825	909
	3%	3%	3%	3%	3%
grade 1 events	13	7	15	12	14
	0%	0%	0%	0%	0%
grade 2 events	581	539	546	471	486
	2%	2%	2%	1%	2%
grade 3 events	293	288	259	305	249
	1%	1%	0%	1%	1%
grade 4 events	248	286	264	232	269
	1%	1%	0%	0%	1%
grade 5 events	740	765	685	800	796
	3%	3%	2%	3%	3%
grade 6 events	420	479	364	394	450
	1%	2%	1%	1%	1%
grade 7 events	19721	19251	23414	20953	19941
	86%	85%	88%	87%	86%

2.2 Compared Parameters

Parameter	Planned	Actual	Parameter	Planned	Actual
Instrument	ACIS	ACIS	Obspar format version number	7	7
Detector	ACIS-01236	ACIS-01236	Obspar file type	PREDICTED	ACTUAL
Grating	NONE	NONE	Obspar update status	NONE	UPDATED
Data mode	VFAINT	VFAINT	Number of optional ACIS chips dropped	0	0
Observation mode	POINTING	POINTING	On-chip summing requested	N	N
[deg] Pointing RA	216.556935	216.5245598123894	Subarray requested	NONE	NONE
[deg] Pointing Dec	33.049453	33.05353510388026	Alternating exposures requested	N	N
[deg] Pointing Roll	140.783807	141.0101564009083	[s] Primary exposure time	0.000000	3.1
[mm] SIM focus pos	-0.782348	-0.7809083437167272			
[mm] SIM defocus	0	0.001439871863259334			
[mm] SIM translation stage pos	-233.592463	-233.5874344608287			
[mm] SIM translation stage offset	0	-0.005018542100998502			
[s] Observation start time (MET)	165103459.184000	165103083.43782			
Observation start date	2003-03-26T22:03:15	2003-03-26T21:58:03			
[s] Observation end time (MET)	165108459.184000	165108593.83805			
Observation end date	2003-03-26T23:26:35	2003-03-26T23:29:53			
Read mode	TIMED	TIMED			

2.3 Aspect



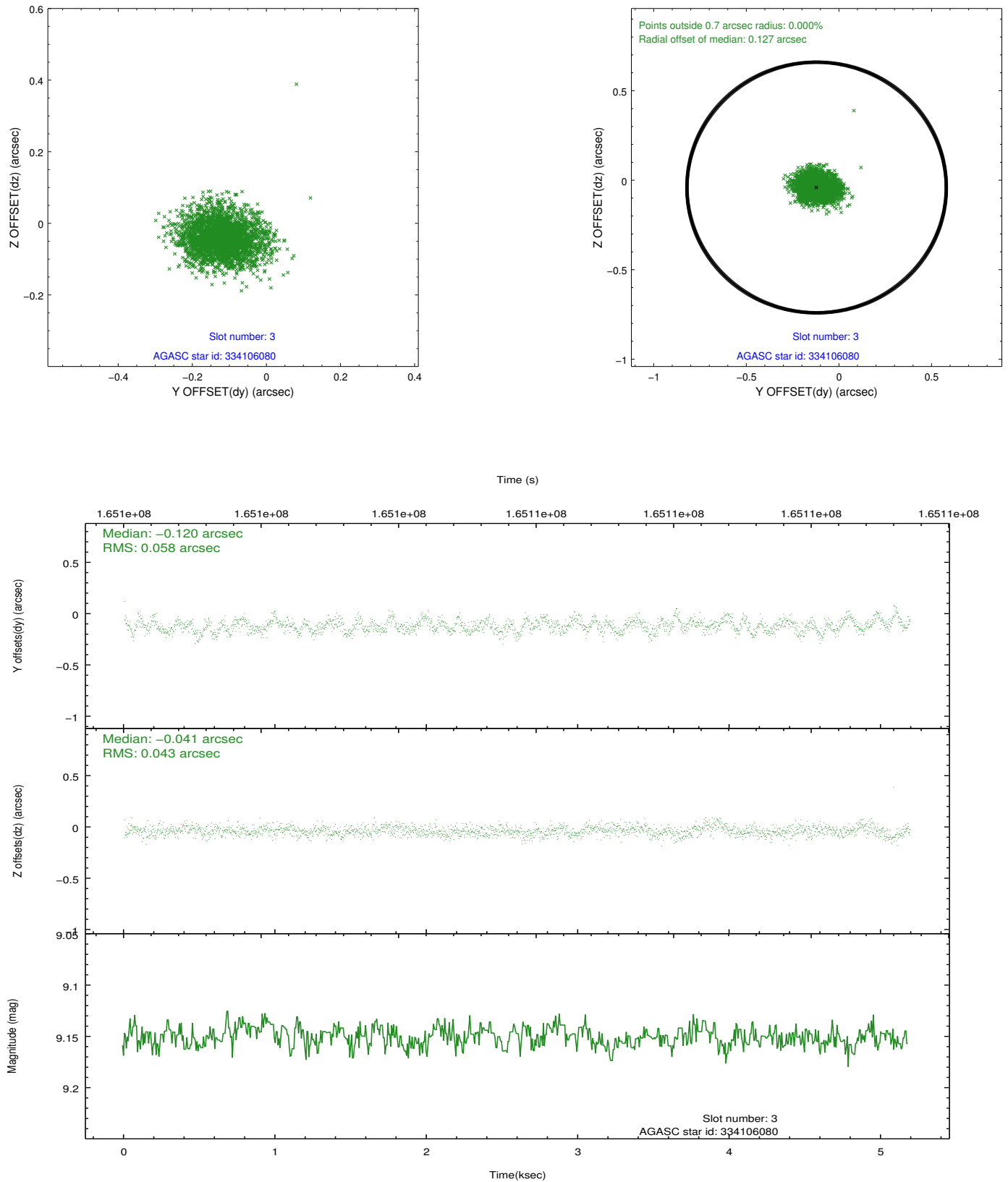


Slot Statistics

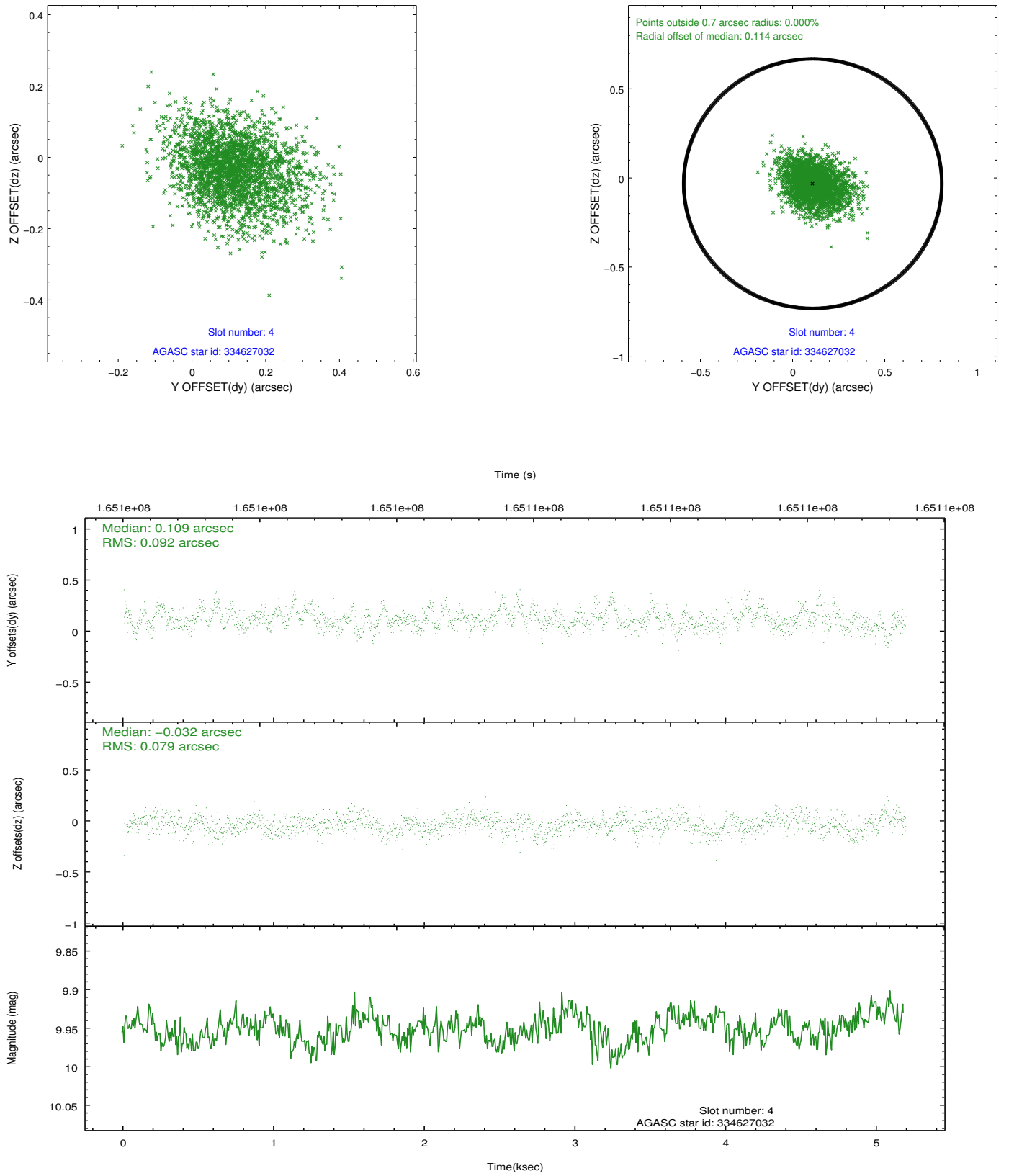
slot	status	id	mag	n_pts	med_dy	med_dz	dr1	dr2	ra	dec	mean_y	mean_z
0	FID	ACIS-I-1	7.25	1266	0.024	0.015	0.006	0.012	0.000000	0.000000	936.20	-830.64
1	FID	ACIS-I-5	7.24	1266	-0.101	0.064	0.006	0.010	0.000000	0.000000	-1811.35	1066.36
2	FID	ACIS-I-6	7.26	1266	-0.014	-0.009	0.007	0.011	0.000000	0.000000	400.48	1712.08
3	GUIDE	334106080	9.15	2531	-0.120	-0.041	0.077	0.125	215.767785	32.987168	1710.00	1673.36
4	GUIDE	334627032	9.95	2530	0.109	-0.032	0.127	0.213	216.632536	32.266744	-1959.08	2037.86
5	GUIDE	335021200	8.86	2532	-0.019	0.057	0.067	0.112	216.377257	32.627867	-537.83	1520.63
6	GUIDE	335028240	9.16	2520	0.026	0.018	0.080	0.138	216.746851	33.385009	321.98	-1296.80
7	OMITTED		0.00	0	0.000	0.000	0.000	0.000	0.000000	0.000000	0.00	0.00

2.4 Star Slots

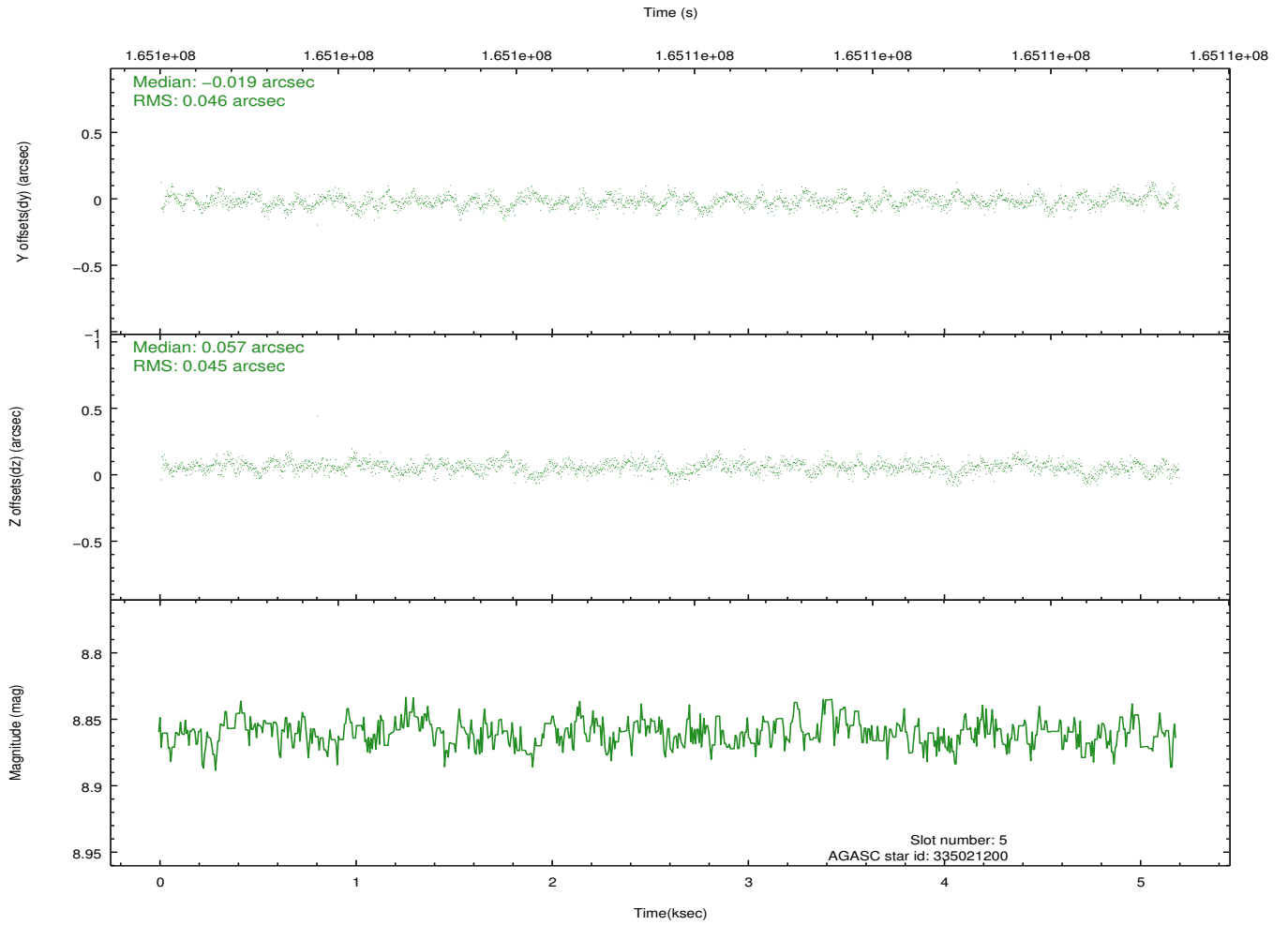
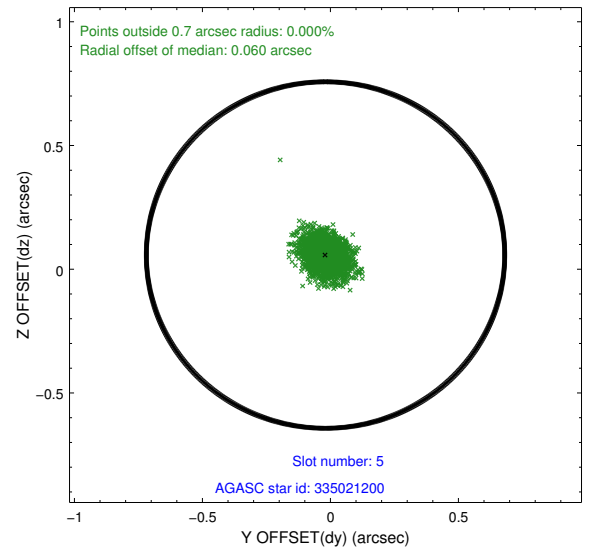
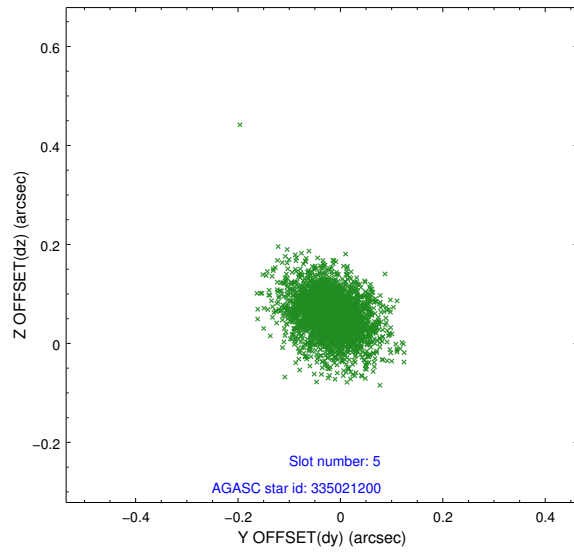
2.4.1 Slot 3



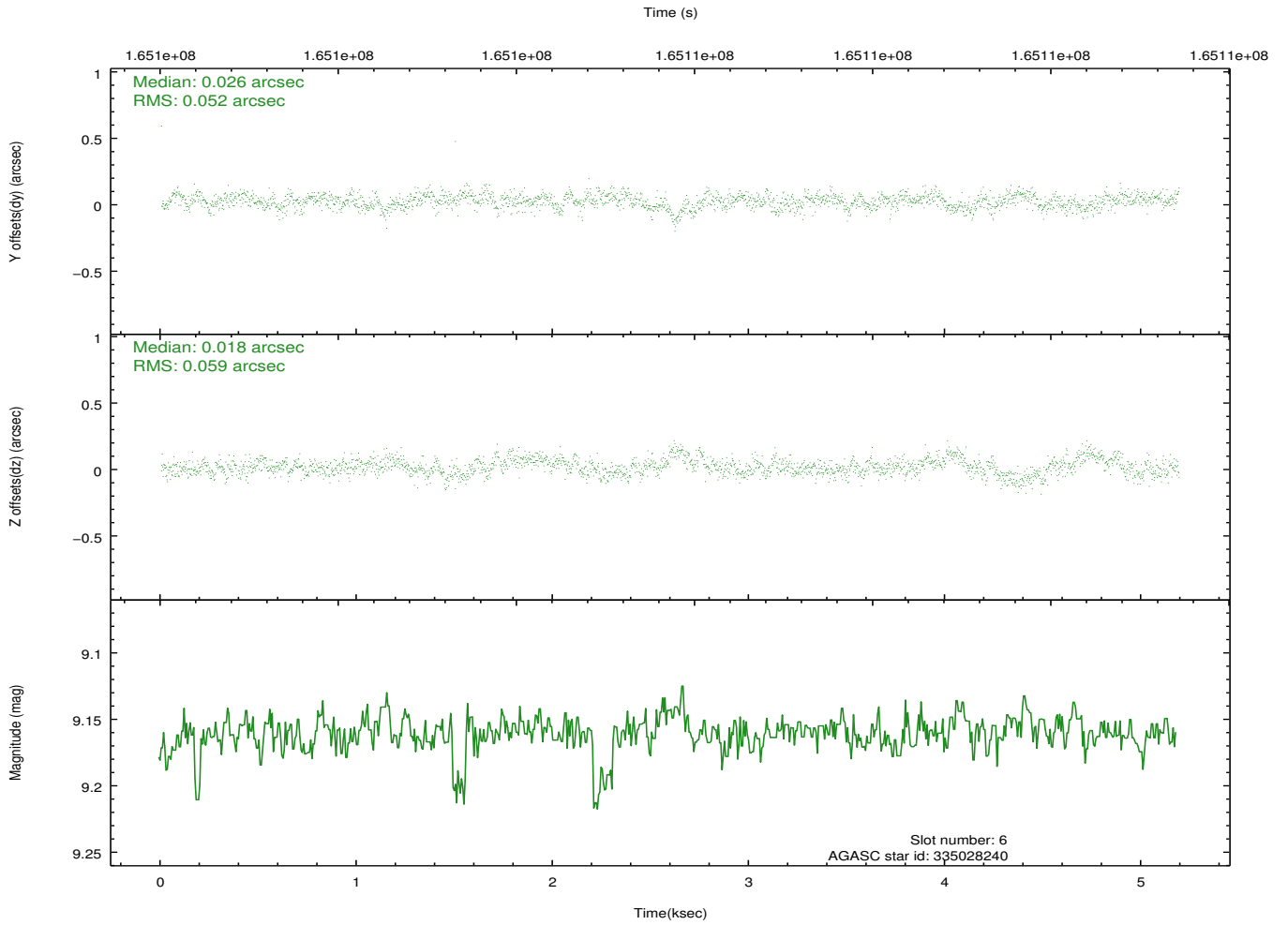
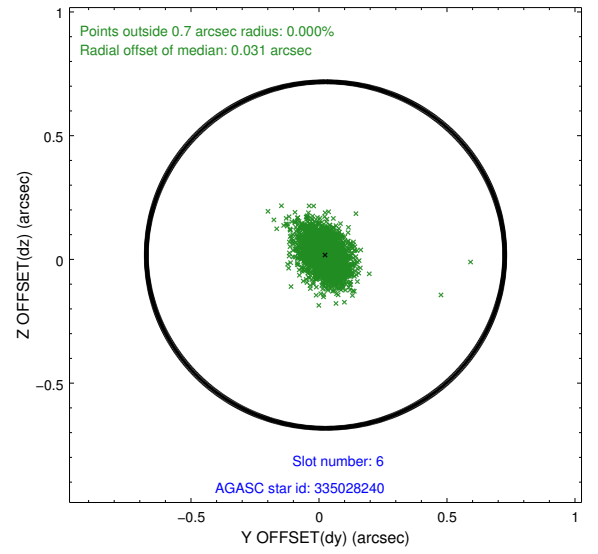
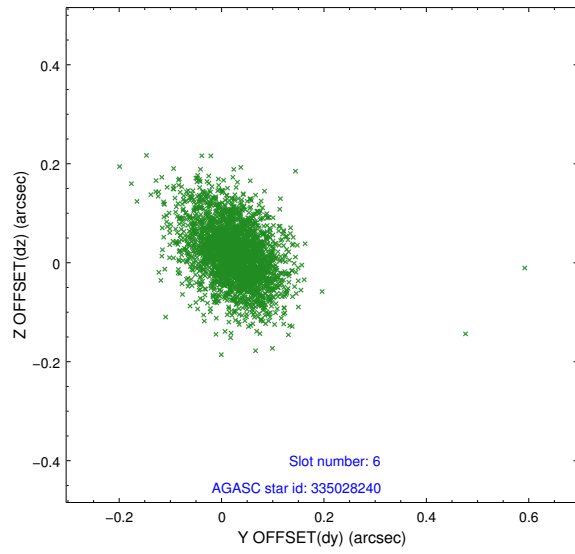
2.4.2 Slot 4



2.4.3 Slot 5

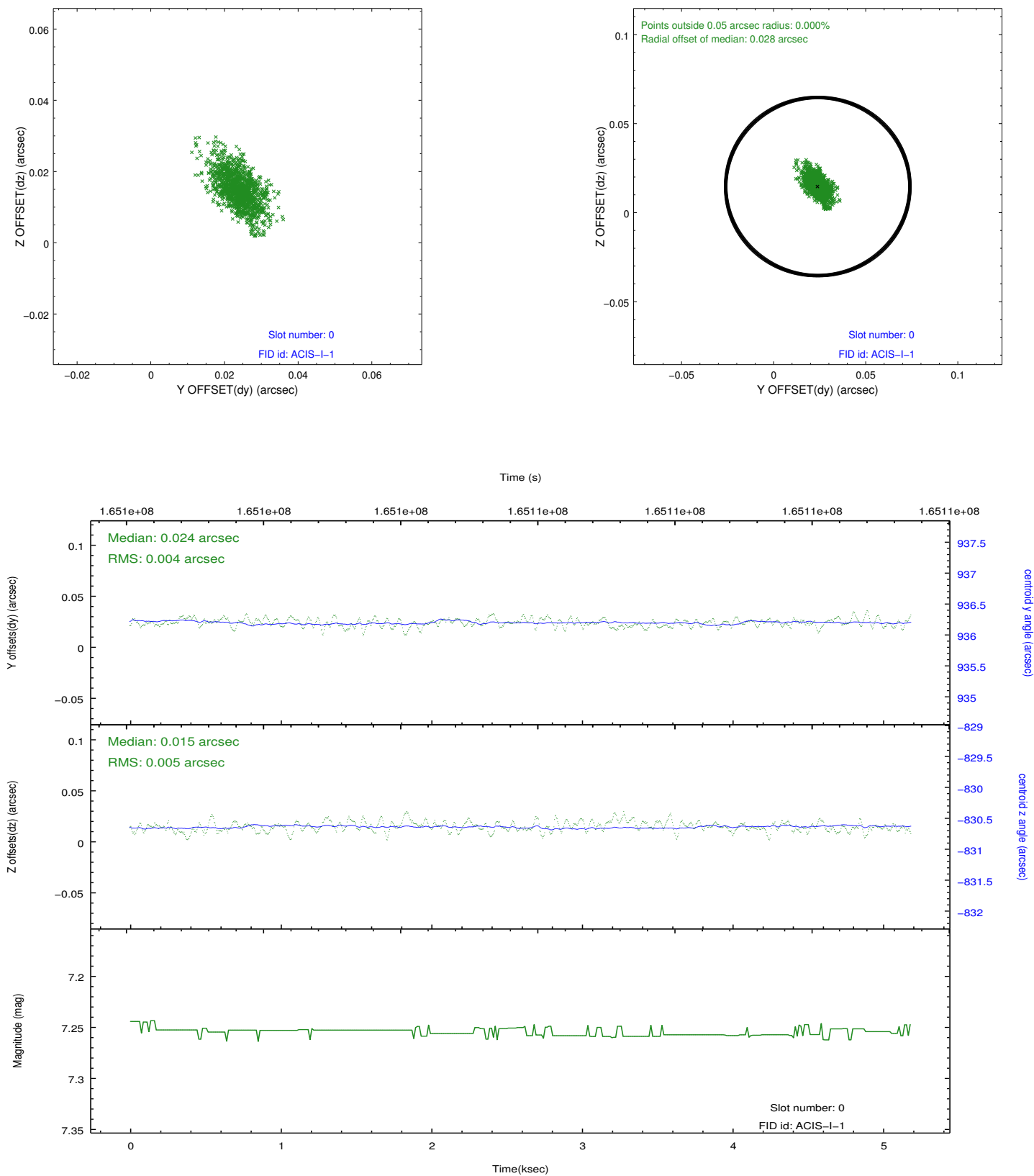


2.4.4 Slot 6

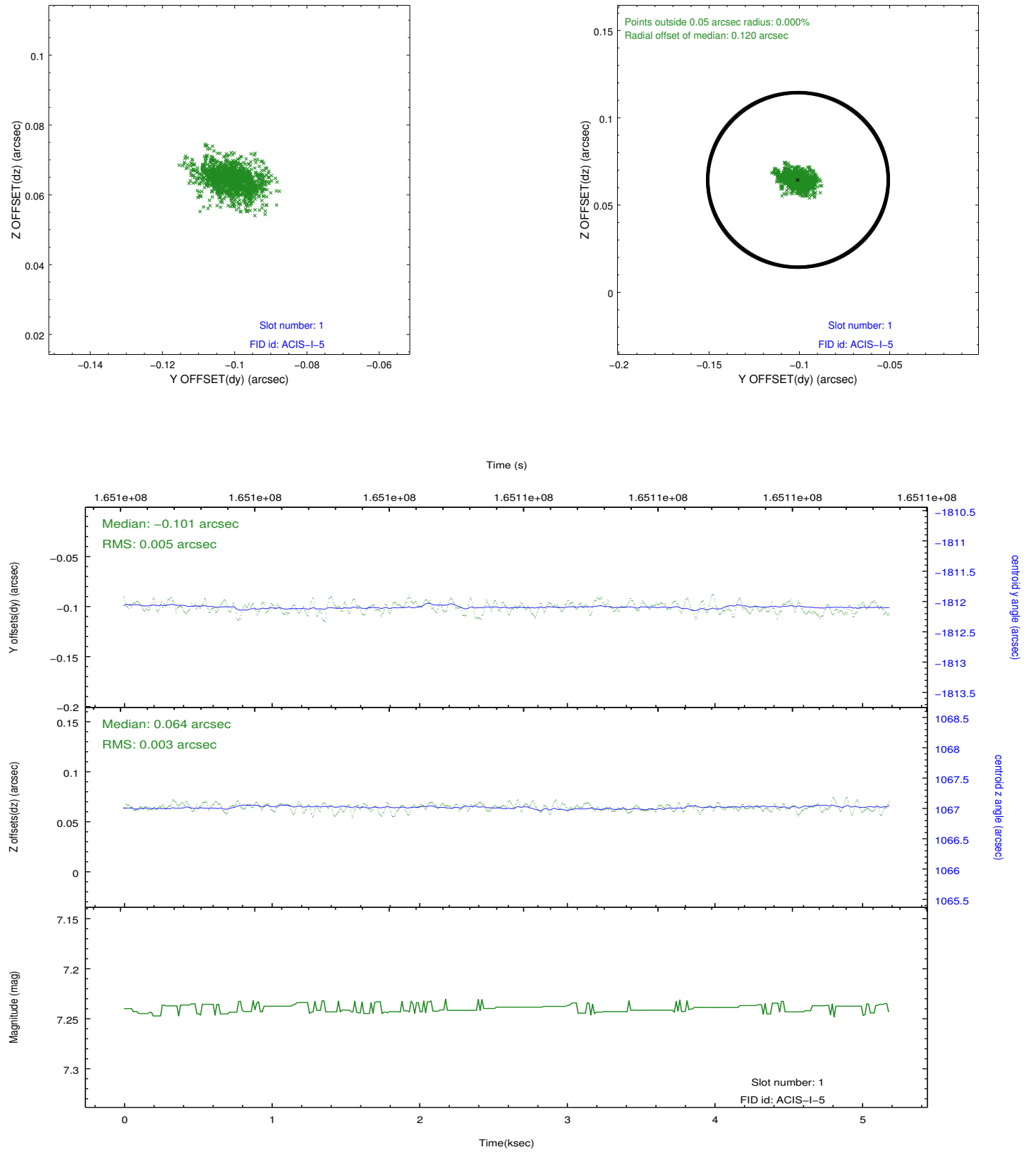


2.5 FID Slots

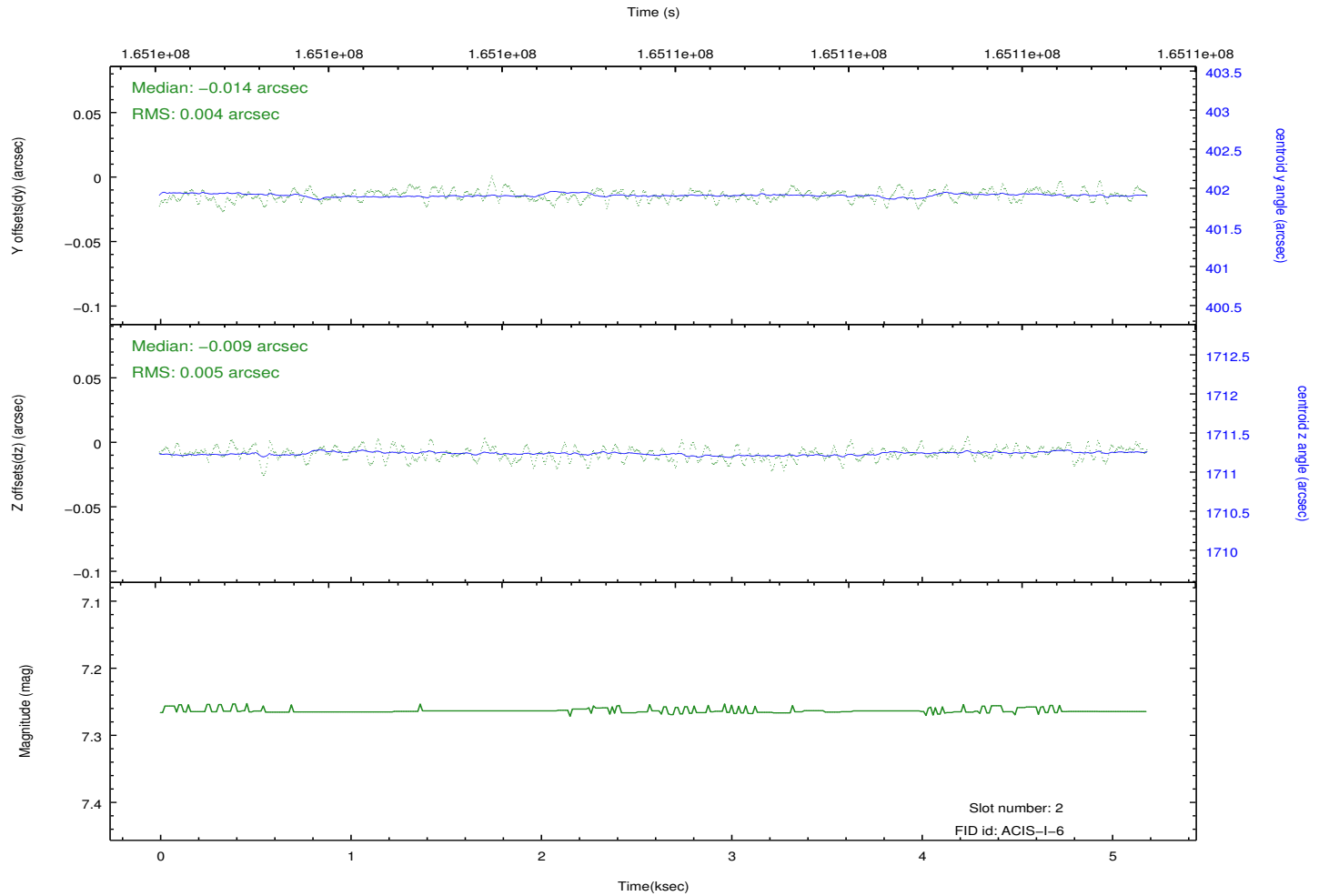
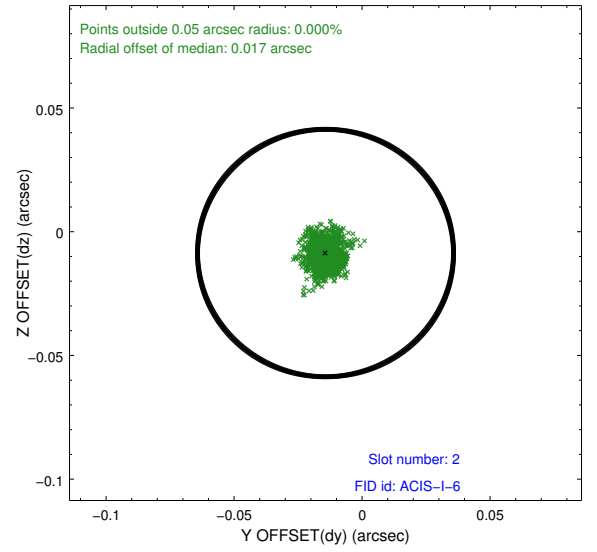
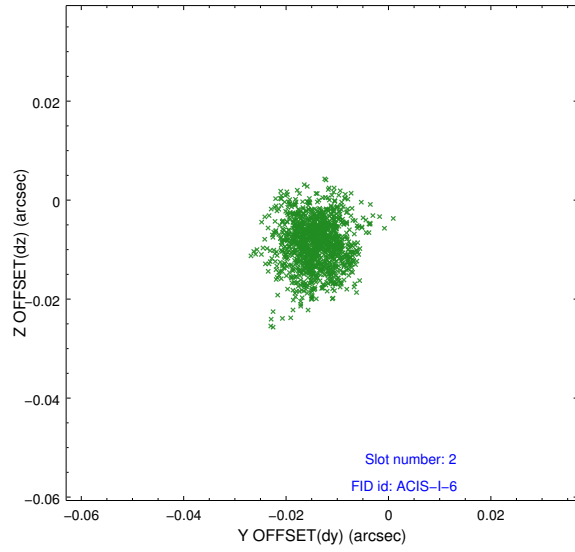
2.5.1 Slot 0



2.5.2 Slot 1



2.5.3 Slot 2



A Summary

A.1 Status

V&V Scientist	Beth Sundheim
V&V Date (YYYY-MM-DD)	2013.01.02
V&V Edition	1
V&V Disposition and Status	OK
V&V Charge Time	4.773

A.2 Comments

The guide star in slot 7 was removed from the aspect solution due to poor data quality. The aspect solution is improved by the removal of this star from the solution.