

V&V Reference Report

L2 ASCDS Version : 8.4.5

Observation 4255 - L2 Version 3
Chandra X-Ray Center

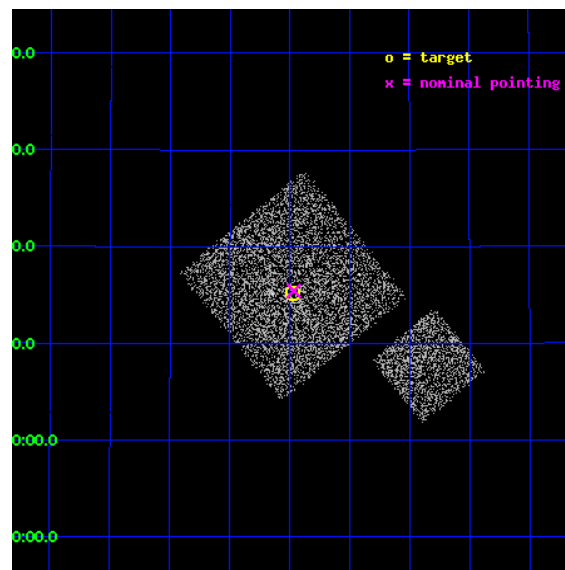
L2 Processing Date : Oct 24 2012

Contents

1	Front	2
2	OBI	3
2.1	OBI	3
2.1.1	Images	3
2.1.2	Bias	3
2.1.3	Parameters	4
2.1.4	Events	4
2.2	Compared Parameters	5
2.3	Aspect	6
2.4	Star Slots	9
2.4.1	Slot 3	9
2.4.2	Slot 4	10
2.4.3	Slot 5	11
2.4.4	Slot 6	12
2.4.5	Slot 7	13
2.5	FID Slots	14
2.5.1	Slot 0	14
2.5.2	Slot 1	15
2.5.3	Slot 2	16
A	Summary	17
A.1	Status	17
A.2	Comments	17

1 Front

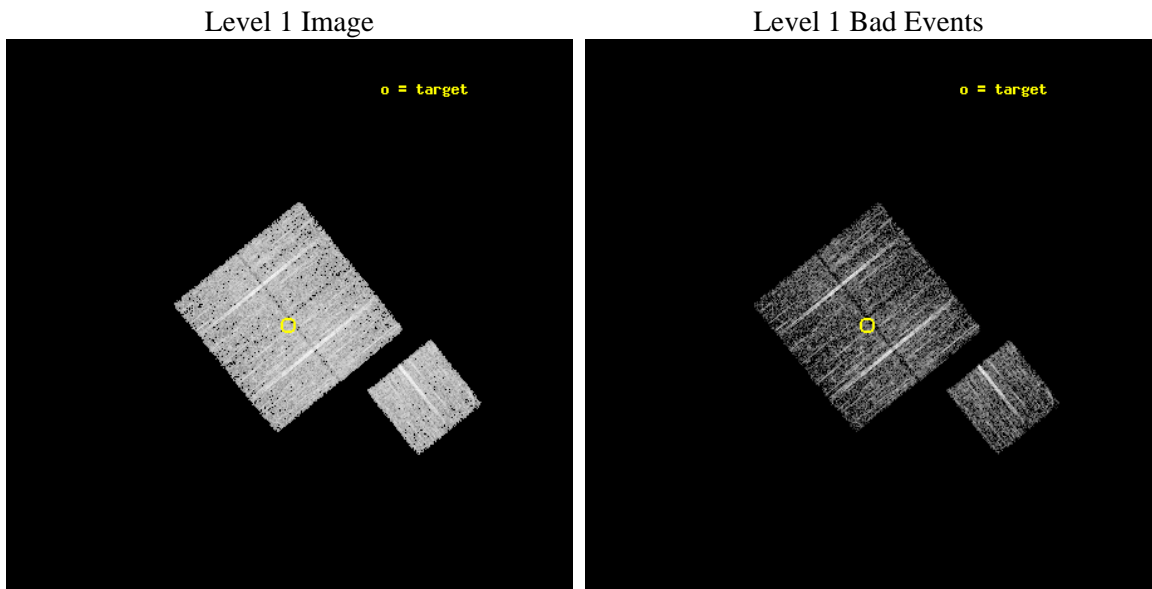
seq_num	900298	Sequence number
obs_id	4255	Observation id
title	A CHANDRA WIDE-FIELD SURVEY TO MAP THE COSMIC WEB AND INVESTIGATE THE EVOLUTION OF NUCLEAR ACCRETION	Proposal title
observer	Dr. Christine Jones	Principal investigator
object	SD30	Source name
dtcycle	0	
cycle	P	events from which exps? Prim/Second/Both
ra_targ	216.744263	Observer's specified target RA [deg]
dec_targ	33.253224	Observer's specified target Dec [deg]
ra_nom	216.74163157521	Nominal RA [deg]
dec_nom	33.257407577958	Nominal Dec [deg]
roll_nom	141.01023997014	Nominal Roll [deg]
revision	3	Processing version of data
ontime	5018.8999903202	Sum of GTIs [s]
livetime	4953.3243670863	Livetime [s]
ontime0	5018.8093083203	Sum of GTIs [s]
ontime1	5015.7093680799	Sum of GTIs [s]
ontime2	5018.8913883269	Sum of GTIs [s]
ontime3	5018.8999903202	Sum of GTIs [s]
ontime6	5015.6272781491	Sum of GTIs [s]
l2events	10162	Number of level 2 events



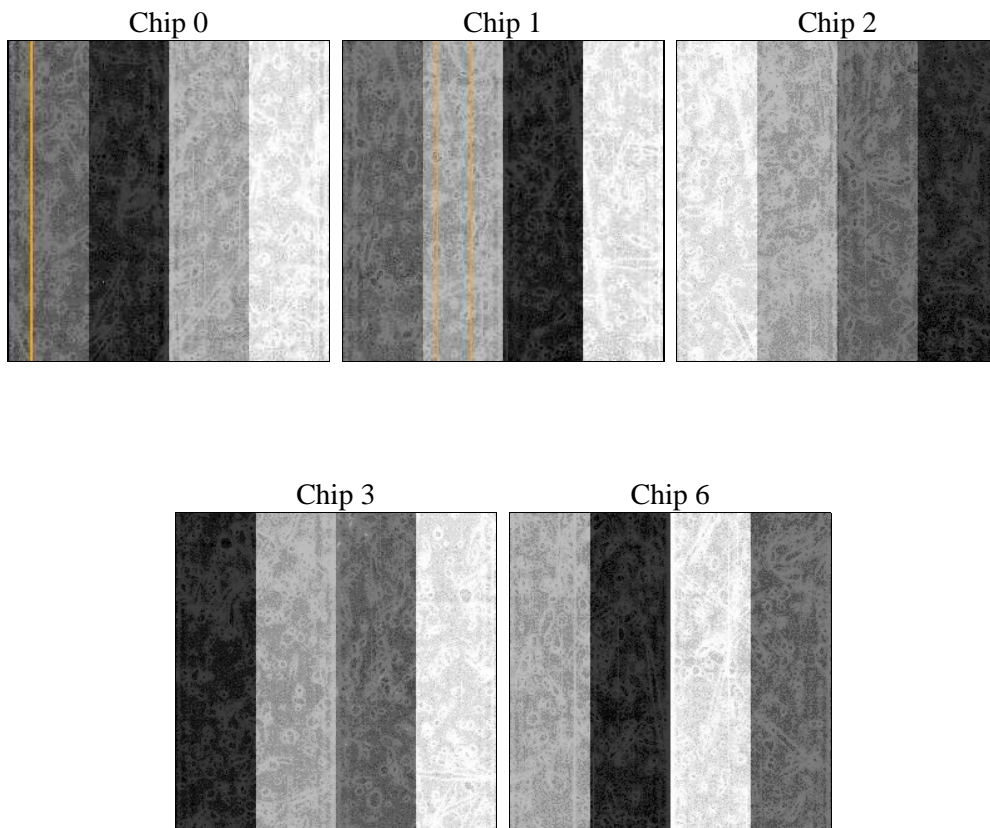
2 OBI

2.1 OBI

2.1.1 Images



2.1.2 Bias



2.1.3 Parameters

obi_num	0	Obi number	sched_exp_time	4900.000000	[s] Scheduled observation exposure time
ascdsver	8.4.5	Processing system revision	ontime	5018.8999903202	Sum of GTIs [s]
caldsver	4.5.2	 	ontime0	5018.8093083203	Sum of GTIs [s]
date	2012-10-24T21:08:43	Date and time of file creation	ontime1	5015.7093680799	Sum of GTIs [s]
revision	3	Processing version of data	ontime2	5018.8913883269	Sum of GTIs [s]
			ontime3	5018.8999903202	Sum of GTIs [s]
			ontime6	5015.6272781491	Sum of GTIs [s]
			l1events	121030	Number of level 1 events

2.1.4 Events

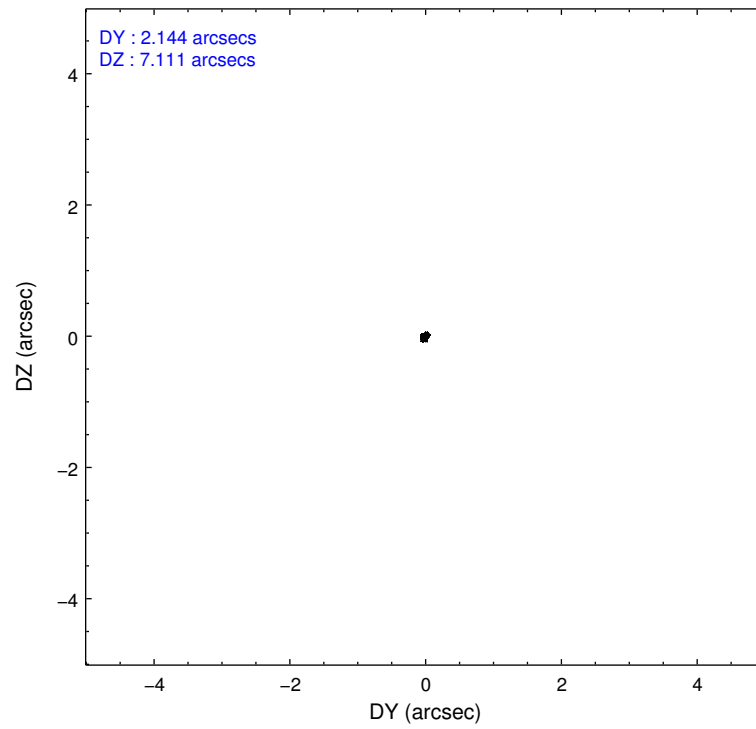
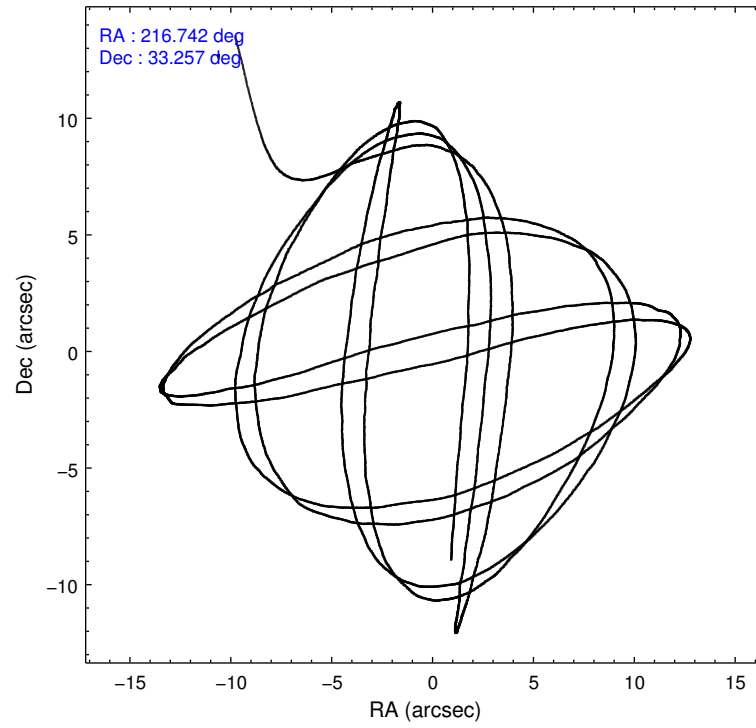
	ccd 0	ccd 1	ccd 2	ccd 3	ccd 6
level 1 events	22782	21938	26290	24731	25289
rejected events	20396	19387	23772	22334	22745
rejected %	89%	88%	90%	90%	89%

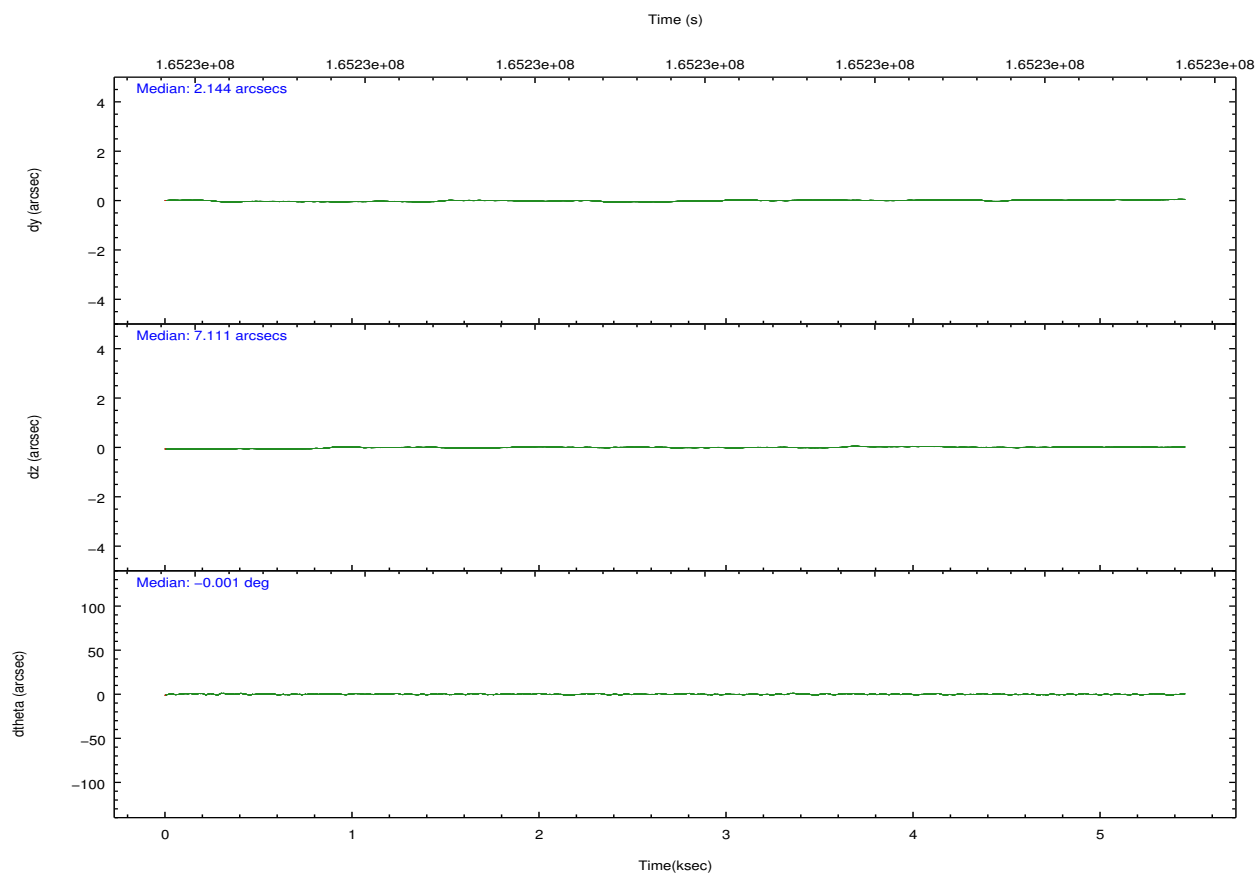
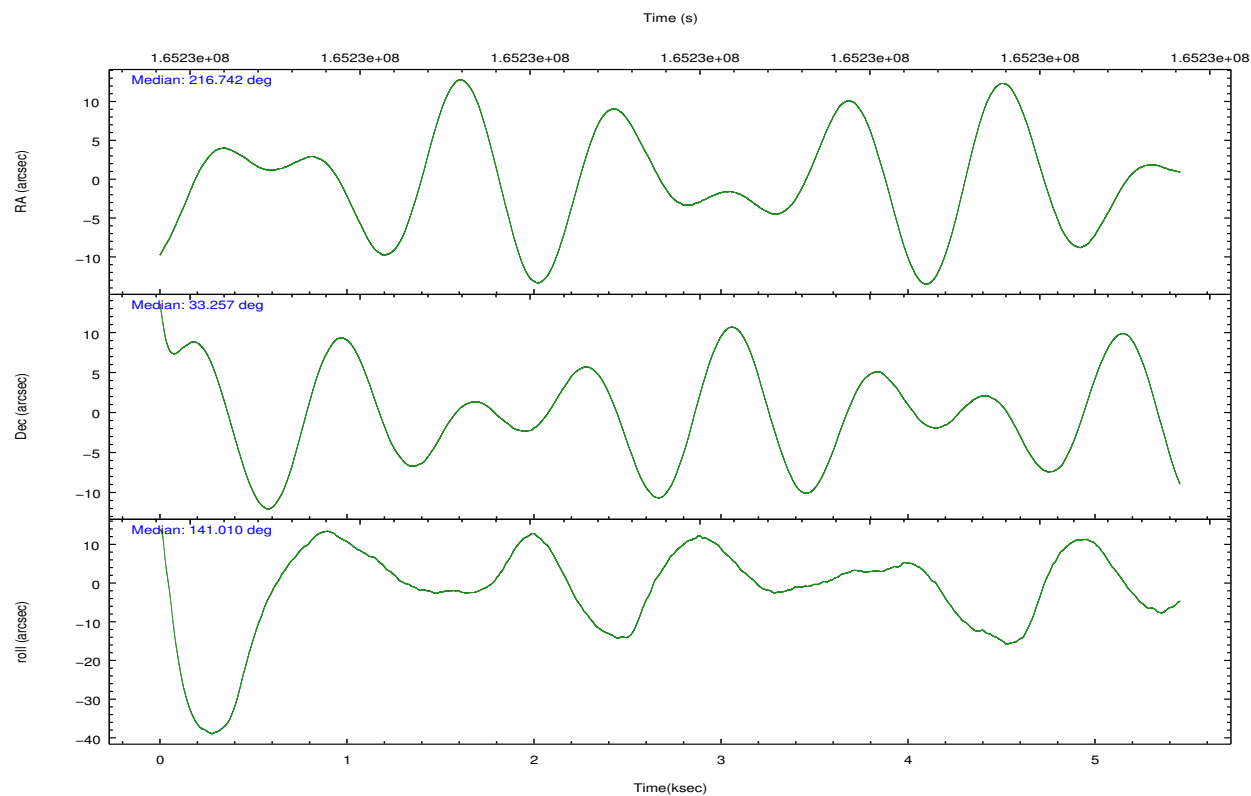
	ccd 0	ccd 1	ccd 2	ccd 3	ccd 6
grade 0 events	872	977	1019	928	928
	3%	4%	3%	3%	3%
grade 1 events	16	10	9	13	4
	0%	0%	0%	0%	0%
grade 2 events	548	509	524	503	555
	2%	2%	1%	2%	2%
grade 3 events	303	297	282	275	258
	1%	1%	1%	1%	1%
grade 4 events	237	275	283	274	273
	1%	1%	1%	1%	1%
grade 5 events	699	777	676	782	821
	3%	3%	2%	3%	3%
grade 6 events	430	497	412	418	532
	1%	2%	1%	1%	2%
grade 7 events	19677	18596	23085	21538	21918
	86%	84%	87%	87%	86%

2.2 Compared Parameters

Parameter	Planned	Actual	Parameter	Planned	Actual
Instrument	ACIS	ACIS	Obspar format version number	7	7
Detector	ACIS-01236	ACIS-01236	Obspar file type	PREDICTED	ACTUAL
Grating	NONE	NONE	Obspar update status	NONE	UPDATED
Data mode	VFAINT	VFAINT	Number of optional ACIS chips dropped	0	0
Observation mode	POINTING	POINTING	On-chip summing requested	N	N
[deg] Pointing RA	216.774023	216.7416315752059	Subarray requested	NONE	NONE
[deg] Pointing Dec	33.253147	33.25740757795771	Alternating exposures requested	N	N
[deg] Pointing Roll	140.783682	141.0102399701358	[s] Primary exposure time	0.000000	3.1
[mm] SIM focus pos	-0.782348	-0.7809083437167272			
[mm] SIM defocus	0	0.001439871863259334			
[mm] SIM translation stage pos	-233.592463	-233.5874344608287			
[mm] SIM translation stage offset	0	-0.005018542100998502			
[s] Observation start time (MET)	165228650.184000	165227508.19307			
Observation start date	2003-03-28T08:49:46	2003-03-28T08:31:48			
[s] Observation end time (MET)	165233550.184000	165233684.84333			
Observation end date	2003-03-28T10:11:26	2003-03-28T10:14:44			
Read mode	TIMED	TIMED			

2.3 Aspect



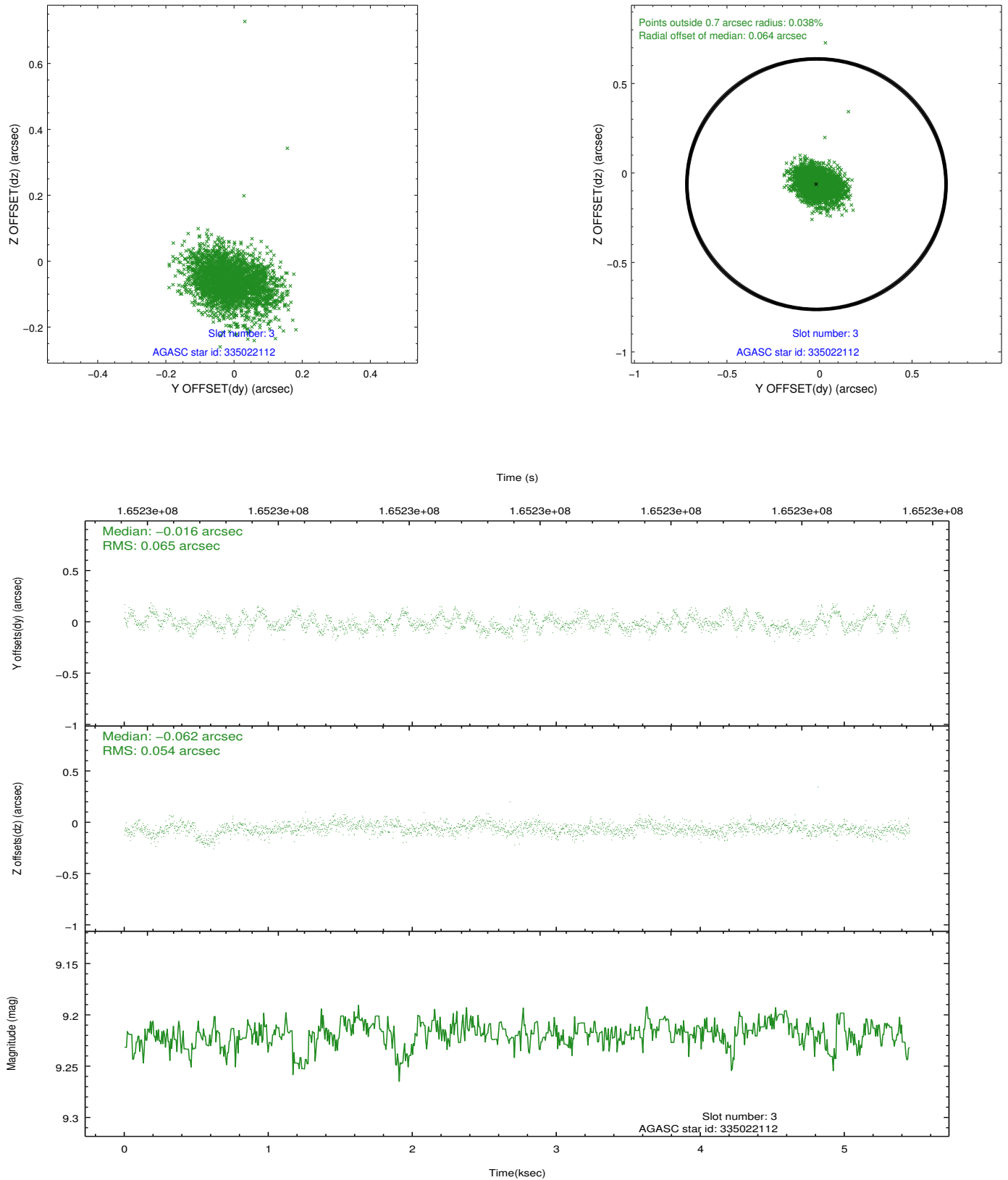


Slot Statistics

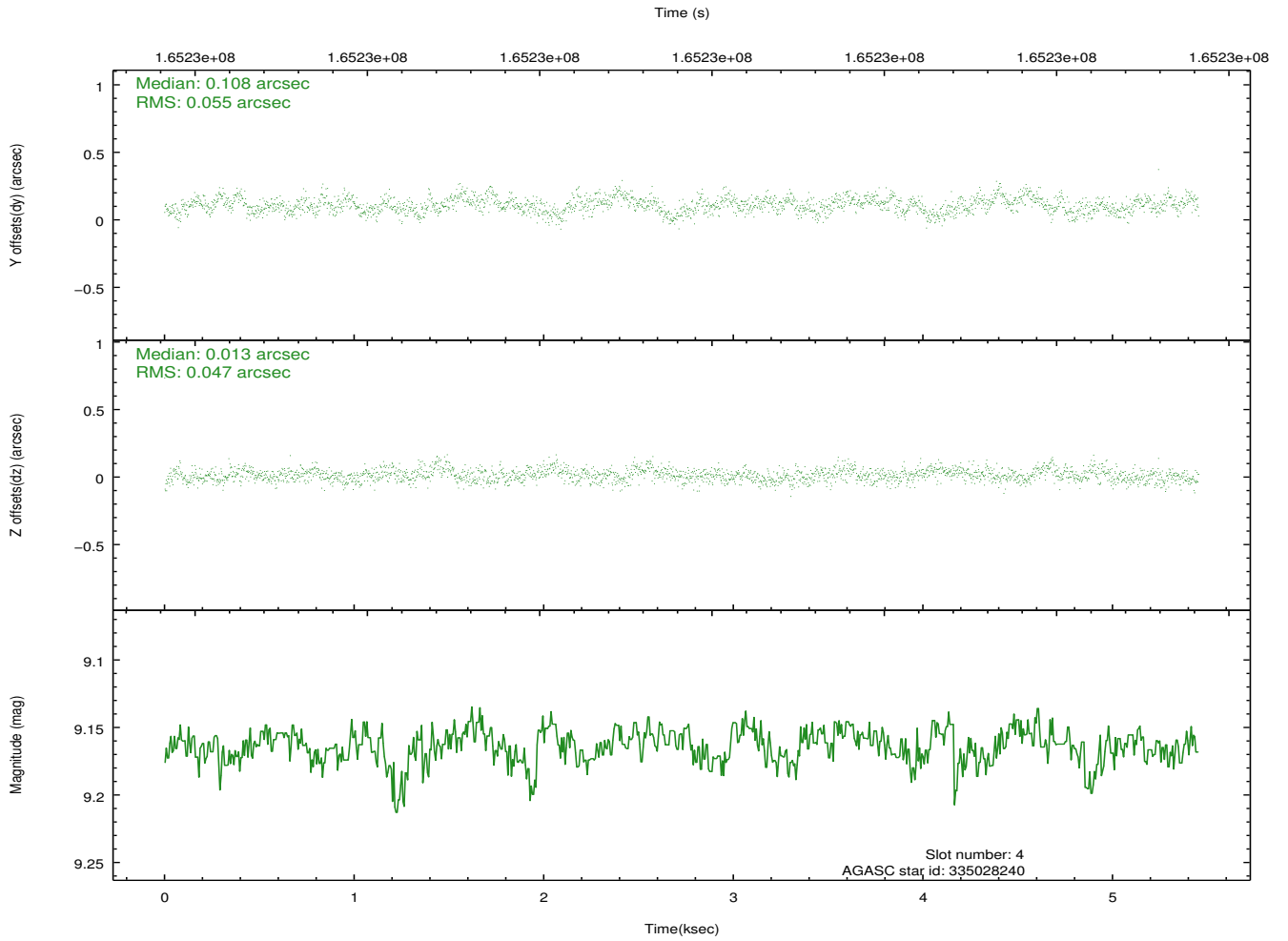
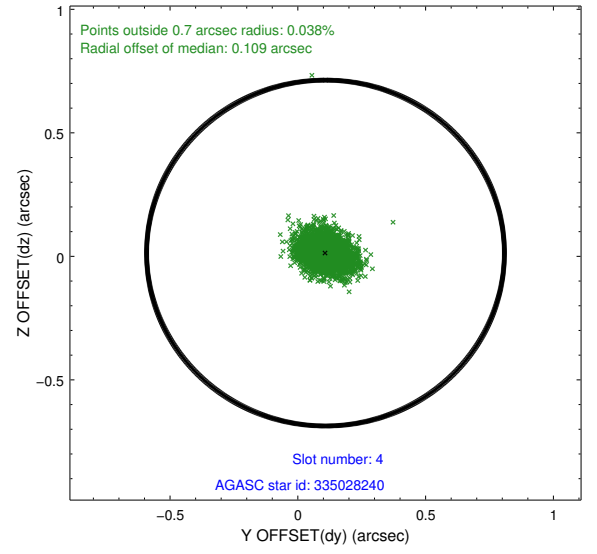
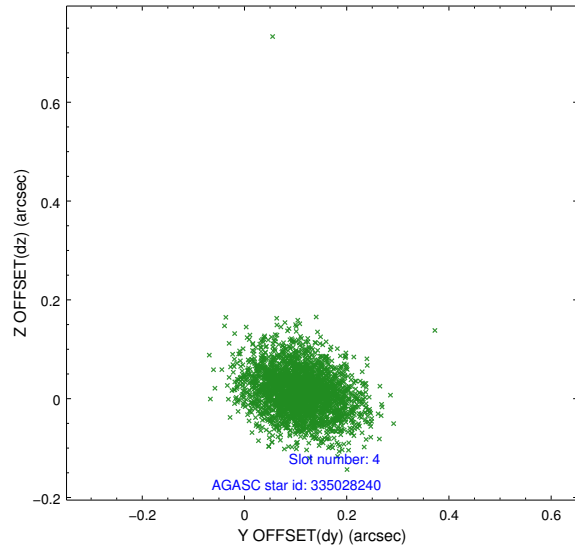
slot	status	id	mag	n_pts	med_dy	med_dz	dr1	dr2	ra	dec	mean_y	mean_z
0	FID	ACIS-I-1	7.25	1331	0.005	0.017	0.006	0.011	0.000000	0.000000	937.67	-830.50
1	FID	ACIS-I-5	7.24	1331	-0.070	0.052	0.006	0.011	0.000000	0.000000	-1809.86	1066.53
2	FID	ACIS-I-6	7.26	1331	-0.026	0.002	0.007	0.011	0.000000	0.000000	402.04	1712.19
3	GUIDE	335022112	9.22	2661	-0.016	-0.062	0.088	0.145	216.659296	32.794758	-774.60	1498.39
4	GUIDE	335028240	9.16	2661	0.108	0.013	0.075	0.125	216.746851	33.385009	363.27	-315.06
5	GUIDE	335029368	10.16	2658	0.012	0.203	0.122	0.202	217.181018	33.065030	-1378.03	-252.98
6	GUIDE	335029808	9.07	2659	0.001	-0.120	0.067	0.110	216.789548	33.180488	-202.27	173.34
7	GUIDE	335030152	9.72	2647	-0.107	-0.031	0.112	0.179	216.202154	33.091054	969.94	1539.47

2.4 Star Slots

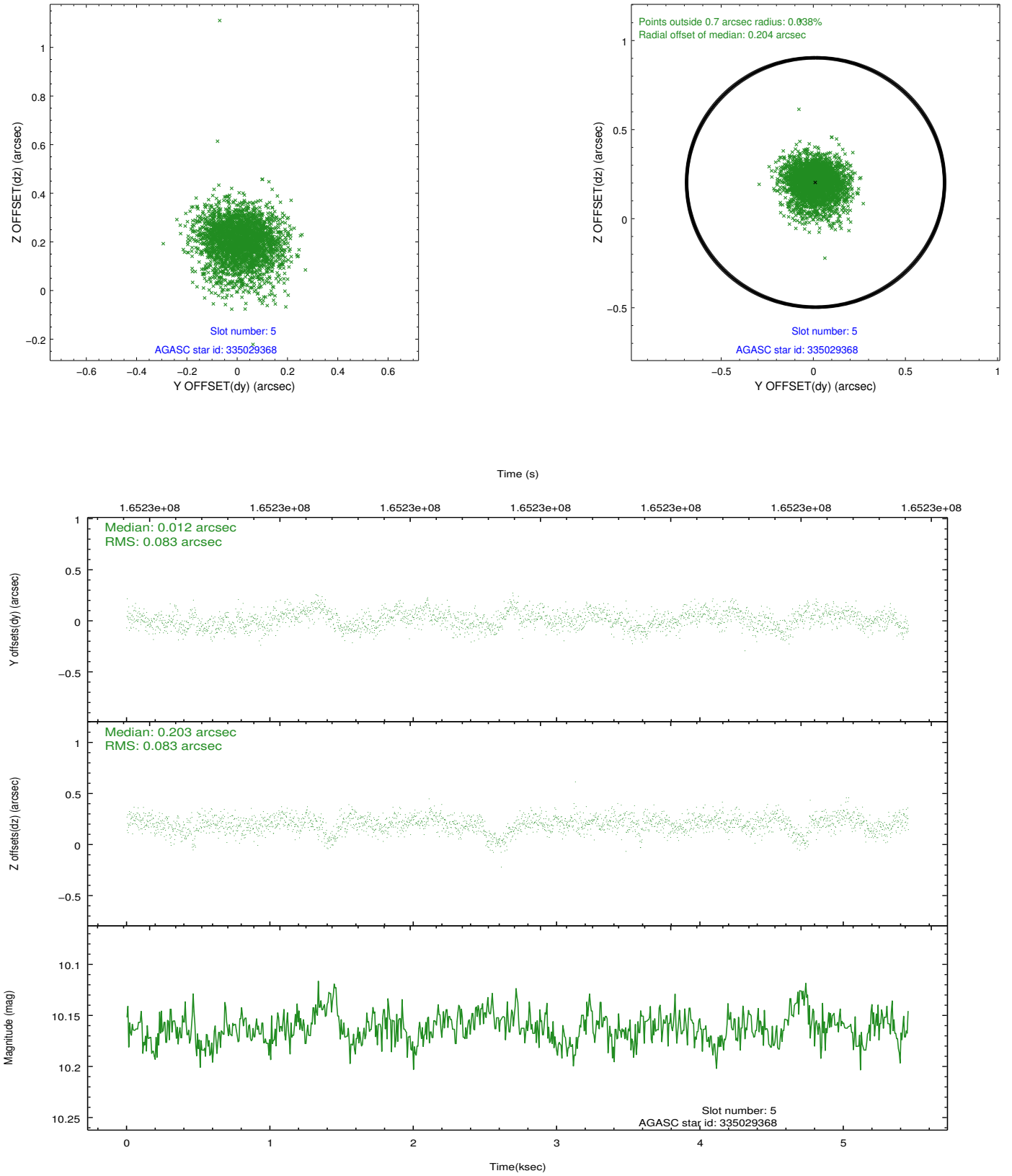
2.4.1 Slot 3



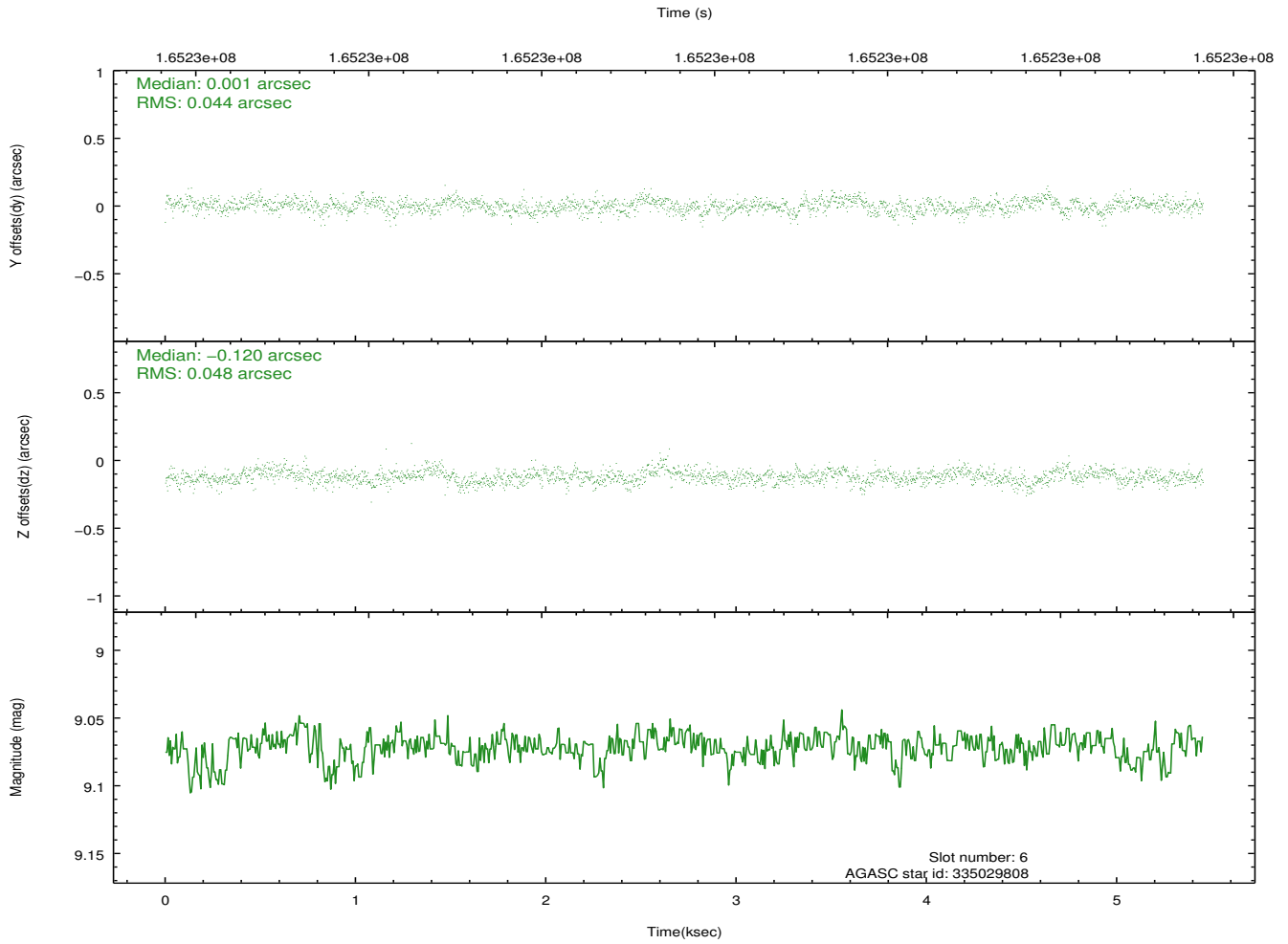
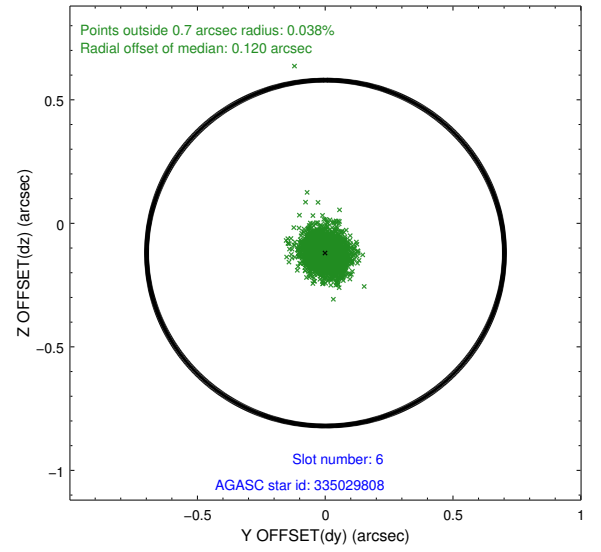
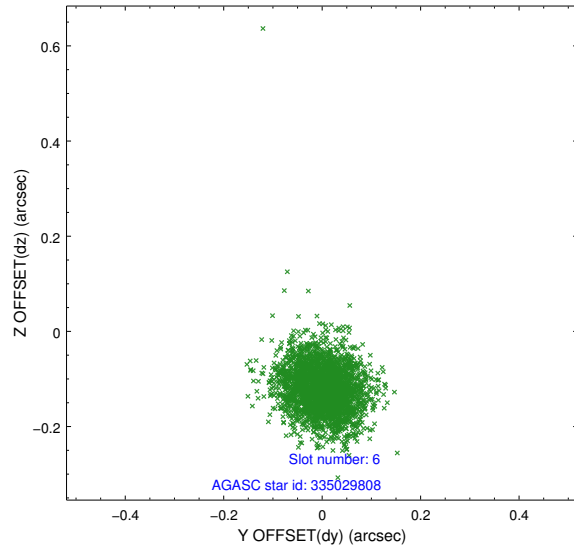
2.4.2 Slot 4



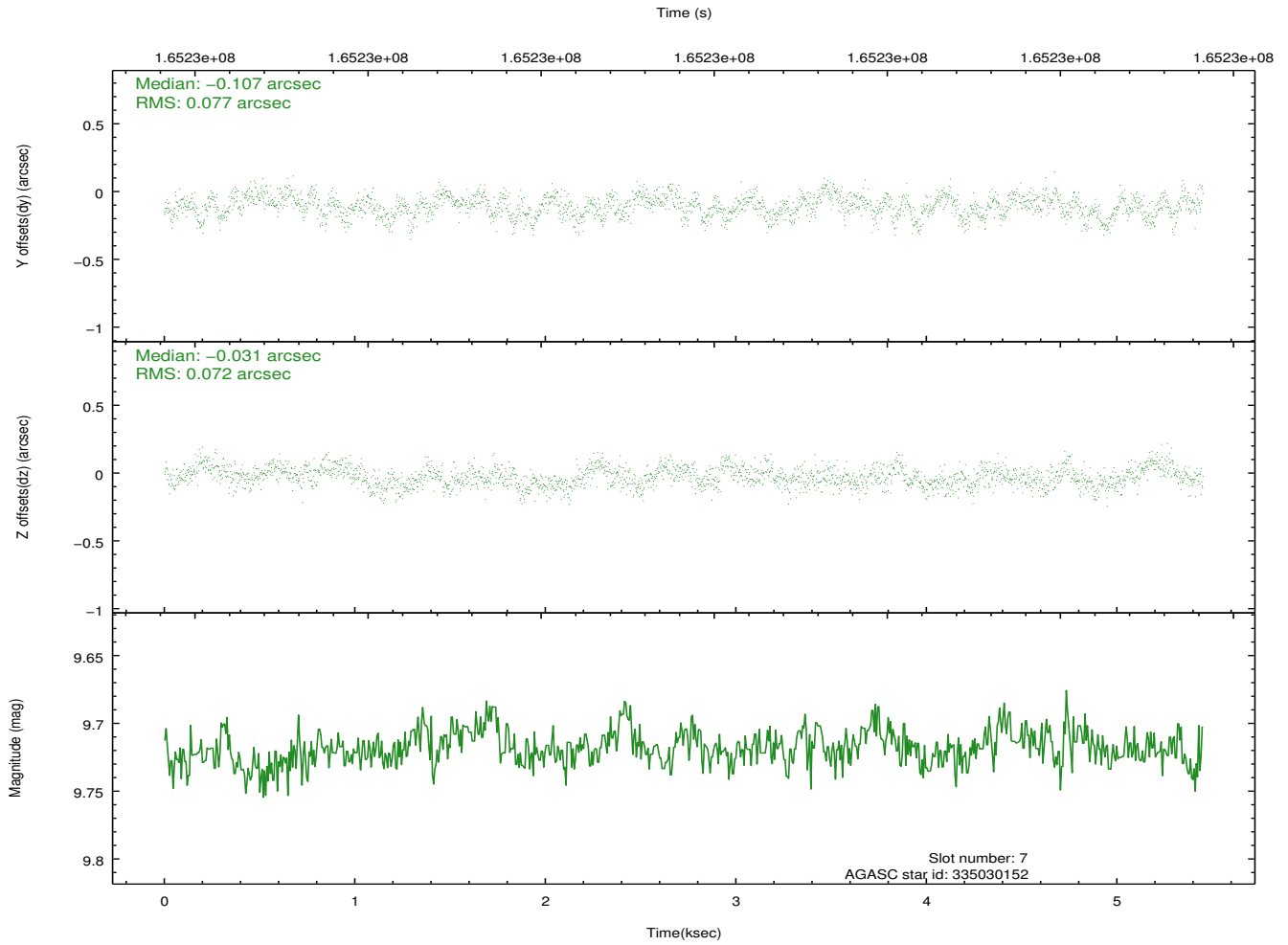
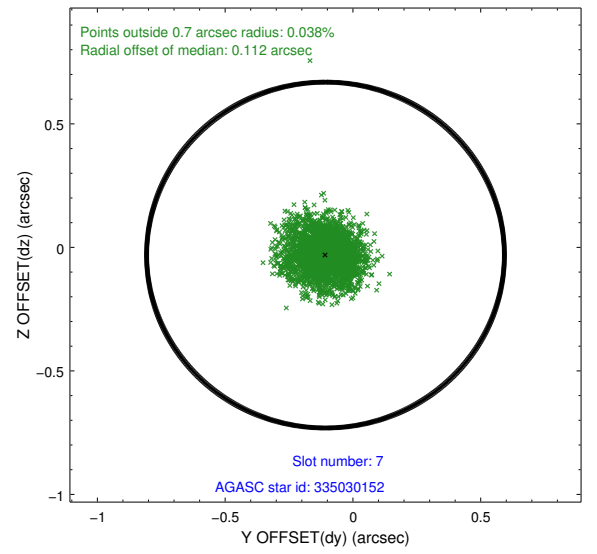
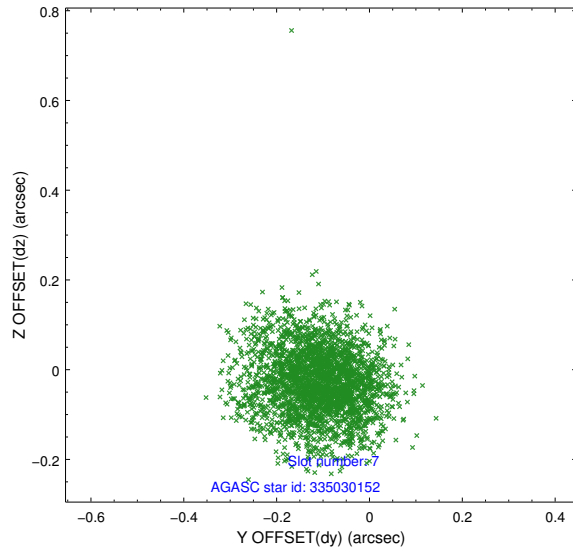
2.4.3 Slot 5



2.4.4 Slot 6

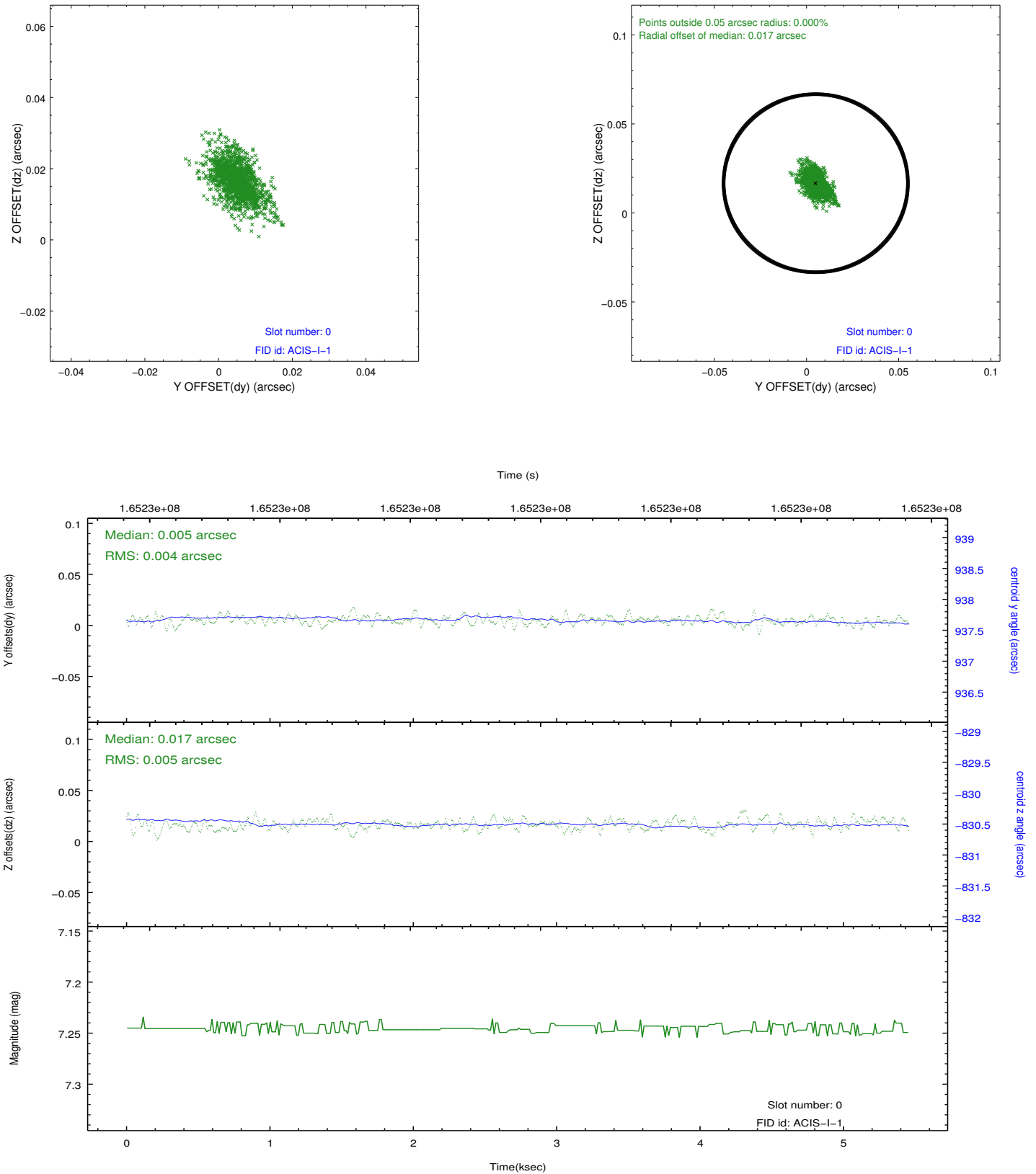


2.4.5 Slot 7

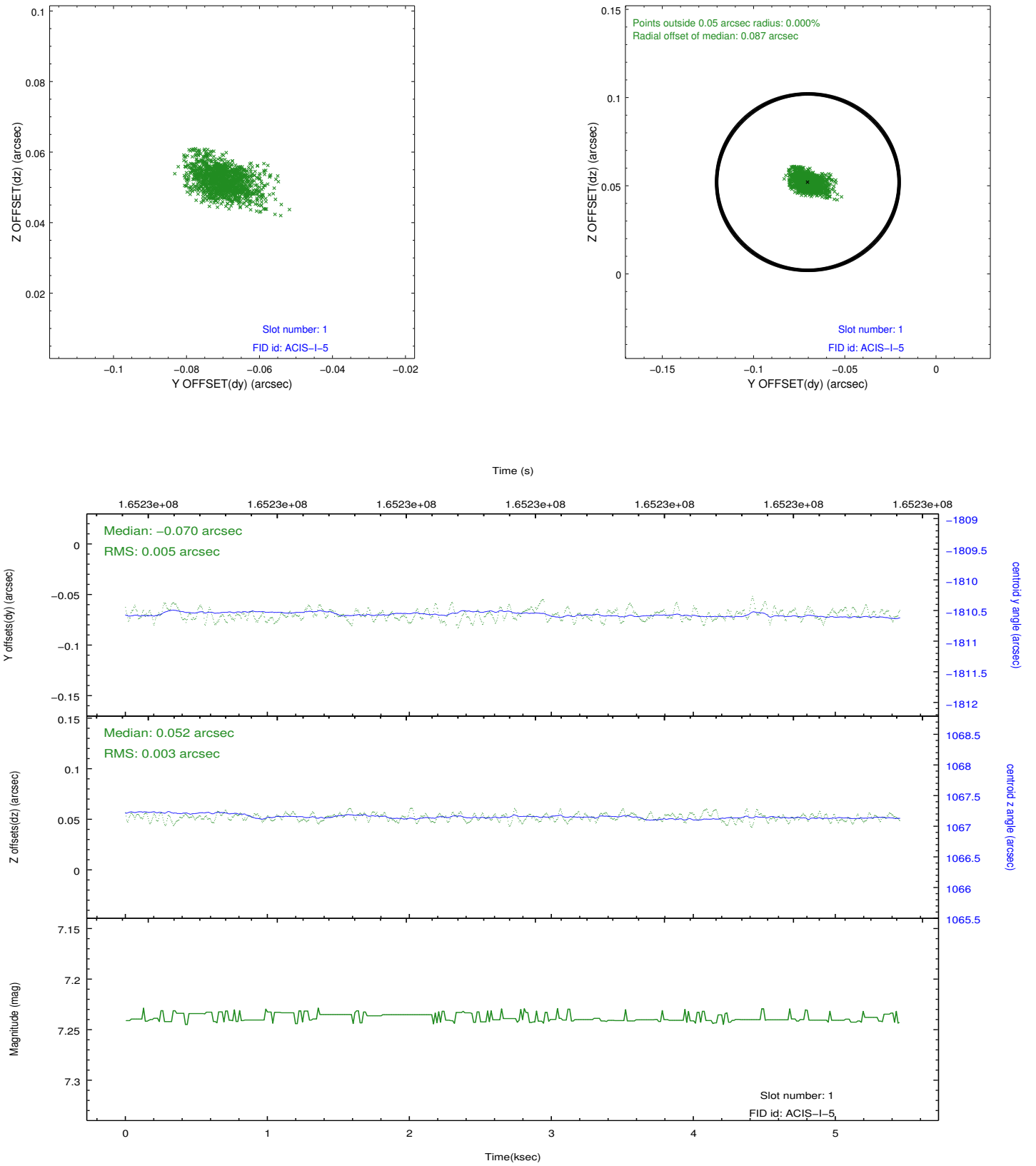


2.5 FID Slots

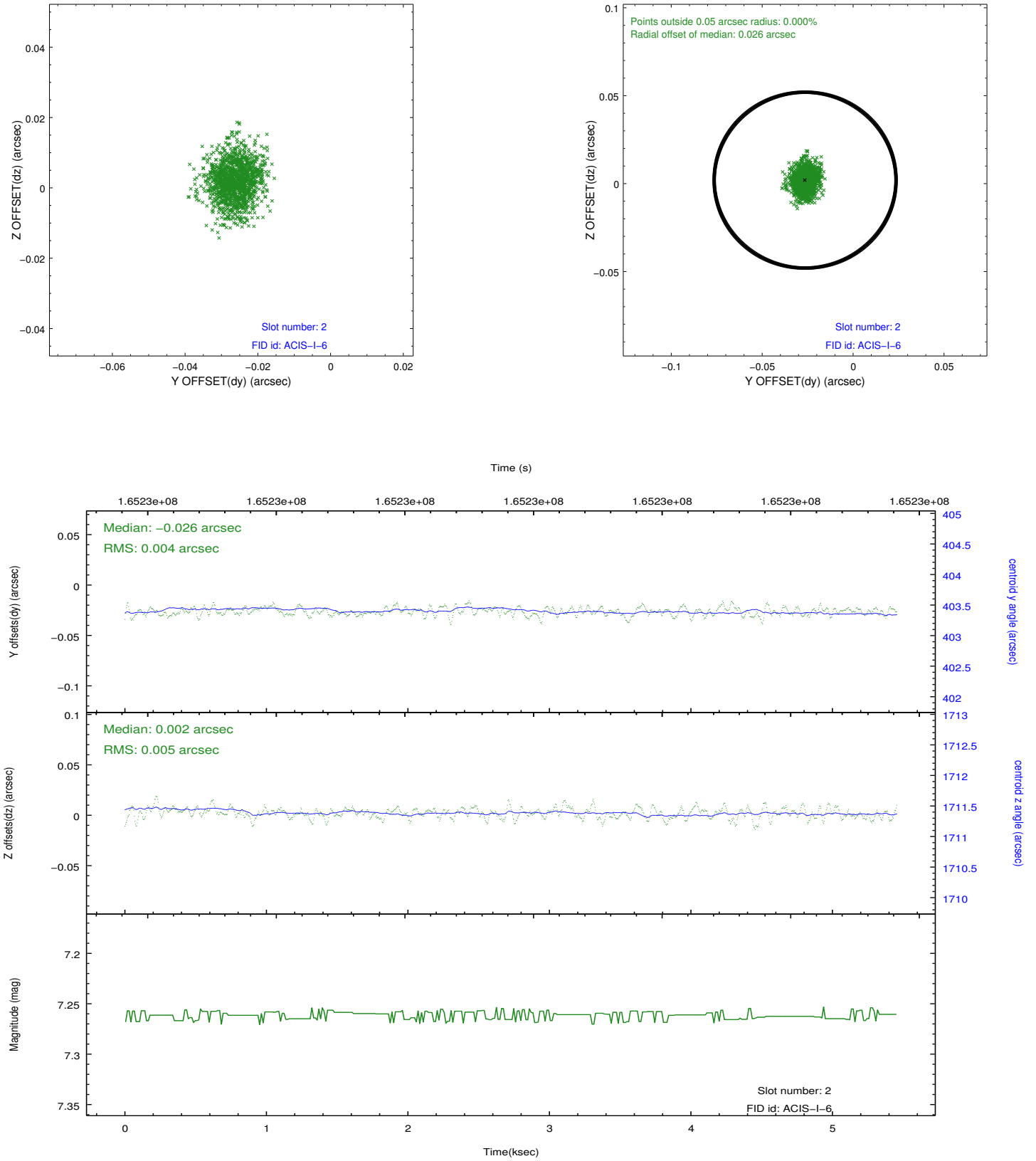
2.5.1 Slot 0



2.5.2 Slot 1



2.5.3 Slot 2



A Summary

A.1 Status

V&V Scientist	Jen Lauer
V&V Date (YYYY-MM-DD)	2012.11.09
V&V Edition	1
V&V Disposition and Status	OK
V&V Charge Time	5.022

A.2 Comments