

V&V Reference Report

L2 ASCDS Version : 8.4.5

Observation 4252 - L2 Version 3
Chandra X-Ray Center

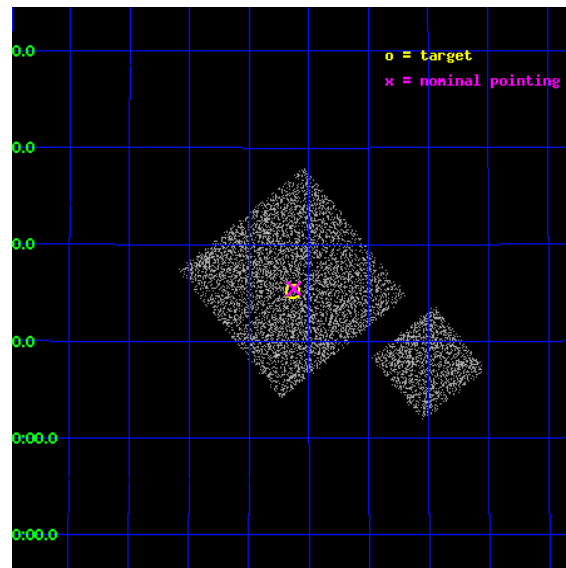
L2 Processing Date : Oct 25 2012

Contents

1	Front	2
2	OBI	3
2.1	OBI	3
2.1.1	Images	3
2.1.2	Bias	3
2.1.3	Parameters	4
2.1.4	Events	4
2.2	Compared Parameters	5
2.3	Aspect	6
2.4	Star Slots	9
2.4.1	Slot 3	9
2.4.2	Slot 4	10
2.4.3	Slot 5	11
2.4.4	Slot 6	12
2.4.5	Slot 7	13
2.5	FID Slots	14
2.5.1	Slot 0	14
2.5.2	Slot 1	15
2.5.3	Slot 2	16
A	Summary	17
A.1	Status	17
A.2	Comments	17

1 Front

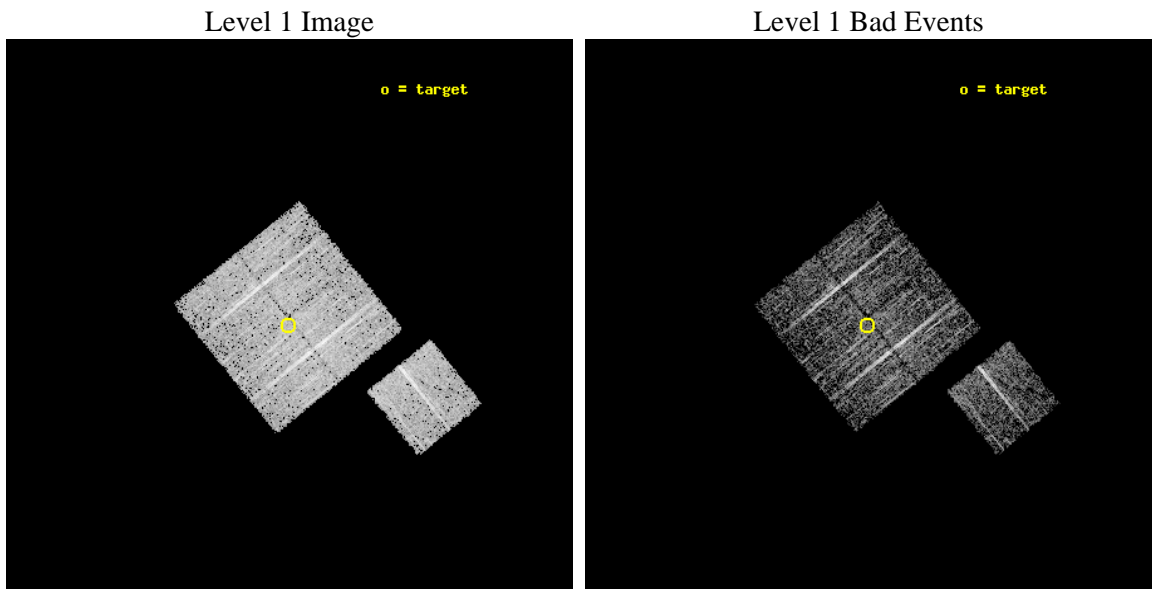
seq_num	900295	Sequence number
obs_id	4252	Observation id
title	A CHANDRA WIDE-FIELD SURVEY TO MAP THE COSMIC WEB AND INVESTIGATE THE EVOLUTION OF NUCLEAR ACCRETION	Proposal title
observer	Dr. Christine Jones	Principal investigator
object	SD51	Source name
dtcycle	0	
cycle	P	events from which exps? Prim/Second/Both
ra_targ	218.034014	Observer's specified target RA [deg]
dec_targ	33.253224	Observer's specified target Dec [deg]
ra_nom	218.03138170963	Nominal RA [deg]
dec_nom	33.257317857426	Nominal Dec [deg]
roll_nom	141.01015356454	Nominal Roll [deg]
revision	3	Processing version of data
ontime	4673.386266768	Sum of GTIs [s]
livetime	4612.3250346957	Livetime [s]
ontime0	4673.2631467581	Sum of GTIs [s]
ontime1	4673.3042066991	Sum of GTIs [s]
ontime2	4673.3452467024	Sum of GTIs [s]
ontime3	4673.386266768	Sum of GTIs [s]
ontime6	4673.2221266925	Sum of GTIs [s]
l2events	9395	Number of level 2 events



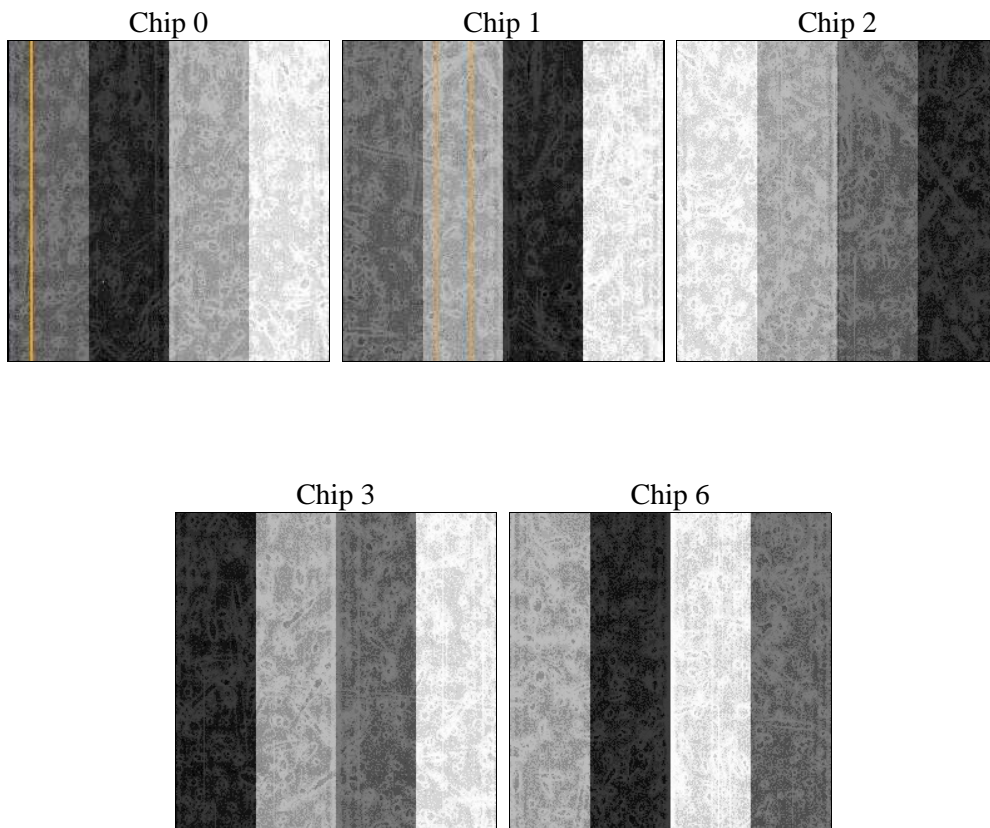
2 OBI

2.1 OBI

2.1.1 Images



2.1.2 Bias



2.1.3 Parameters

obi_num	1	Obi number	sched_exp_time	4900.000000	[s] Scheduled observation exposure time
ascdsver	8.4.5	Processing system revision	ontime	4673.386266768	Sum of GTIs [s]
caldsver	4.5.2	 	ontime0	4673.2631467581	Sum of GTIs [s]
date	2012-10-25T22:49:03	Date and time of file creation	ontime1	4673.3042066991	Sum of GTIs [s]
revision	3	Processing version of data	ontime2	4673.3452467024	Sum of GTIs [s]
			ontime3	4673.386266768	Sum of GTIs [s]
			ontime6	4673.2221266925	Sum of GTIs [s]
			l1events	112445	Number of level 1 events

2.1.4 Events

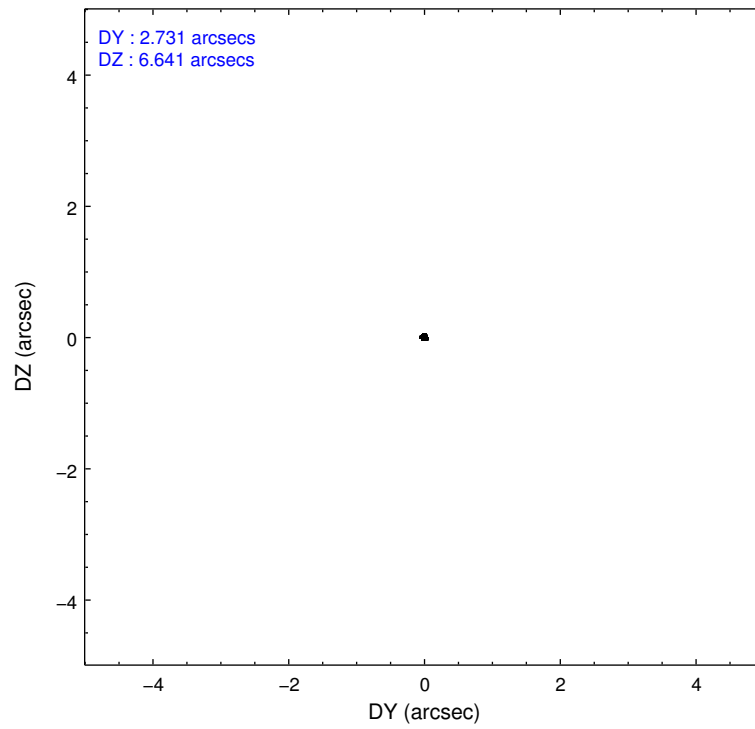
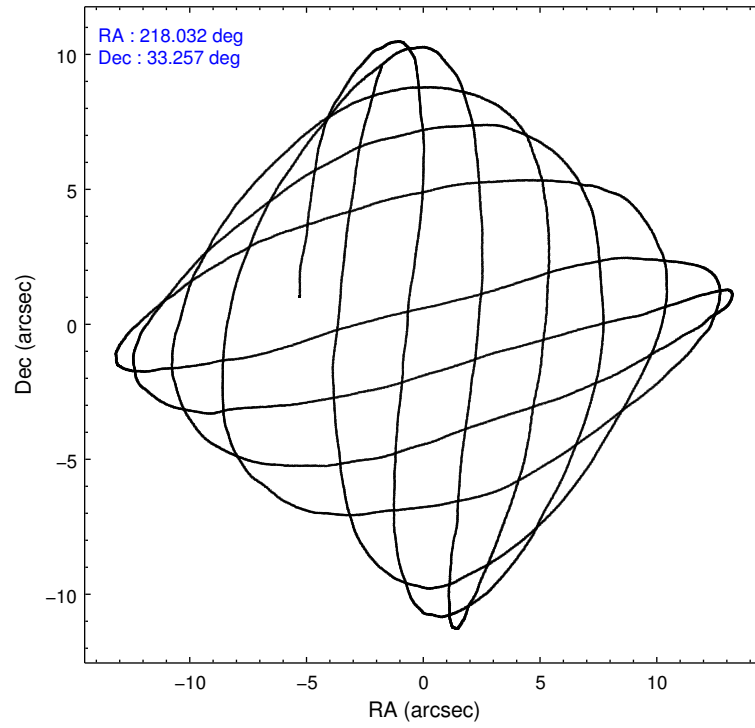
	ccd 0	ccd 1	ccd 2	ccd 3	ccd 6
level 1 events	21530	20656	24574	23548	22137
rejected events	19218	18228	22295	21326	19878
rejected %	89%	88%	90%	90%	89%

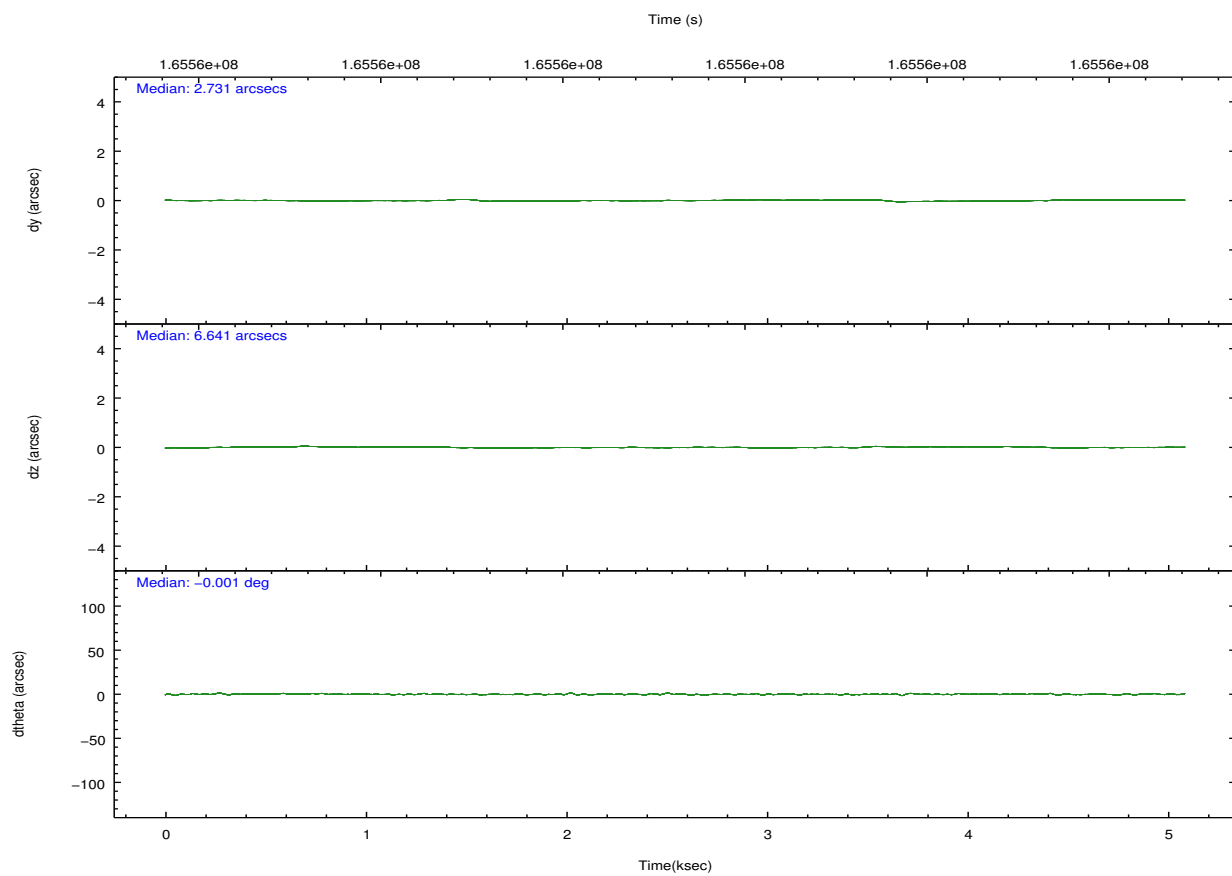
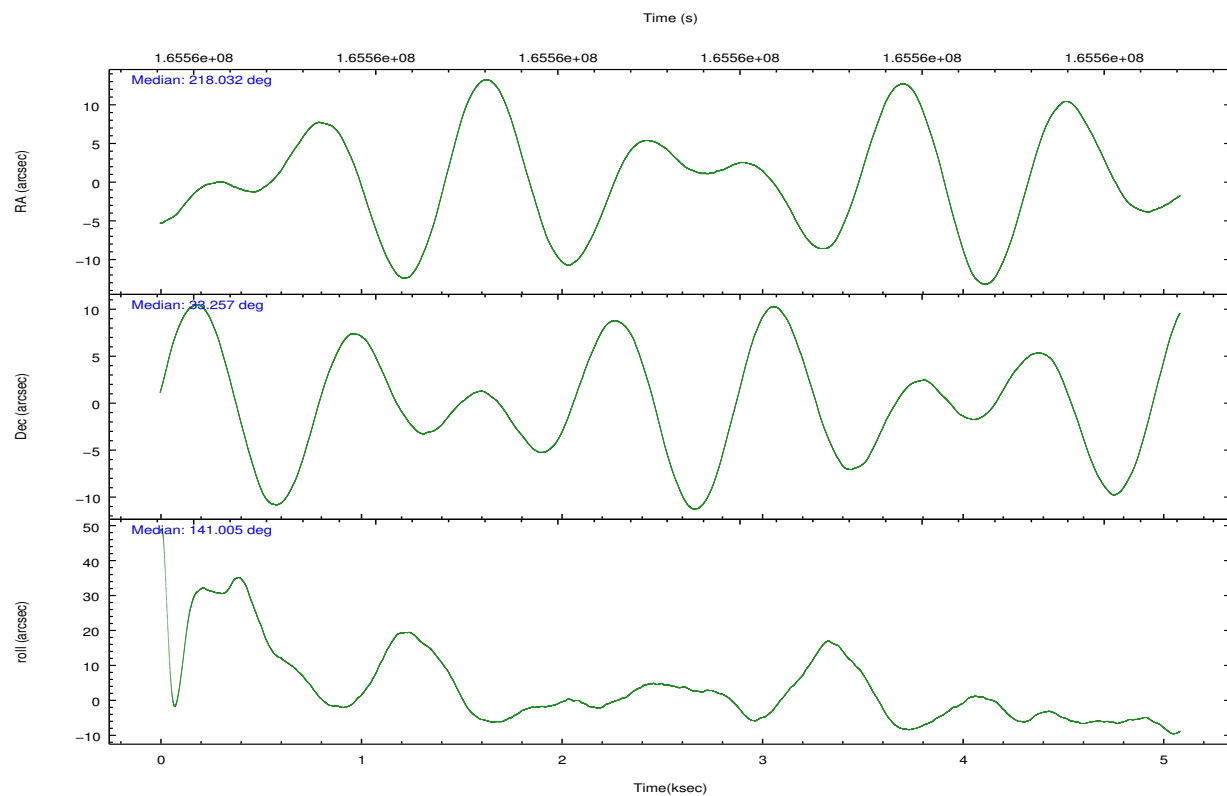
	ccd 0	ccd 1	ccd 2	ccd 3	ccd 6
grade 0 events	815	891	796	868	839
	3%	4%	3%	3%	3%
grade 1 events	13	12	11	6	7
	0%	0%	0%	0%	0%
grade 2 events	499	491	481	453	458
	2%	2%	1%	1%	2%
grade 3 events	295	259	294	249	249
	1%	1%	1%	1%	1%
grade 4 events	252	297	296	254	262
	1%	1%	1%	1%	1%
grade 5 events	598	745	657	764	747
	2%	3%	2%	3%	3%
grade 6 events	453	492	413	399	452
	2%	2%	1%	1%	2%
grade 7 events	18605	17469	21626	20555	19123
	86%	84%	88%	87%	86%

2.2 Compared Parameters

Parameter	Planned	Actual	Parameter	Planned	Actual
Instrument	ACIS	ACIS	Obspar format version number	7	7
Detector	ACIS-01236	ACIS-01236	Obspar file type	PREDICTED	ACTUAL
Grating	NONE	NONE	Obspar update status	NONE	UPDATED
Data mode	VFAINT	VFAINT	Number of optional ACIS chips dropped	0	0
Observation mode	POINTING	POINTING	On-chip summing requested	N	N
[deg] Pointing RA	218.063769	218.031381709633	Subarray requested	NONE	NONE
[deg] Pointing Dec	33.253137	33.25731785742591	Alternating exposures requested	N	N
[deg] Pointing Roll	140.783686	141.0101535645449	[s] Primary exposure time	0.000000	3.1
[mm] SIM focus pos	-0.782348	-0.7809083437167272			
[mm] SIM defocus	0	0.001439871863259334			
[mm] SIM translation stage pos	-233.592463	-233.5874344608287			
[mm] SIM translation stage offset	0	-0.005018542100998502			
[s] Observation start time (MET)	165555254.184000	165554877.83187			
Observation start date	2003-04-01T03:33:10	2003-04-01T03:27:57			
[s] Observation end time (MET)	165560154.184000	165560287.7821			
Observation end date	2003-04-01T04:54:50	2003-04-01T04:58:07			
Read mode	TIMED	TIMED			

2.3 Aspect



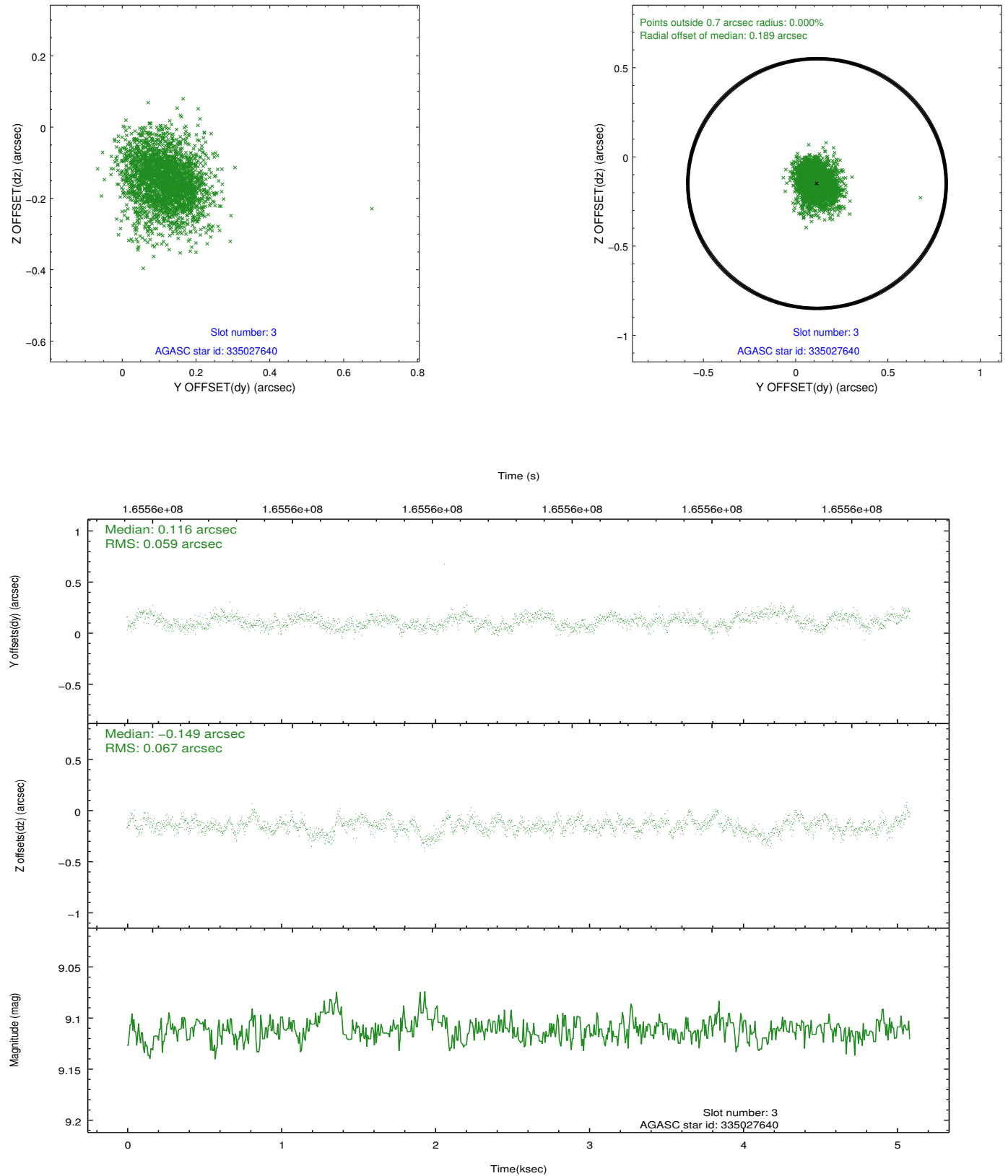


Slot Statistics

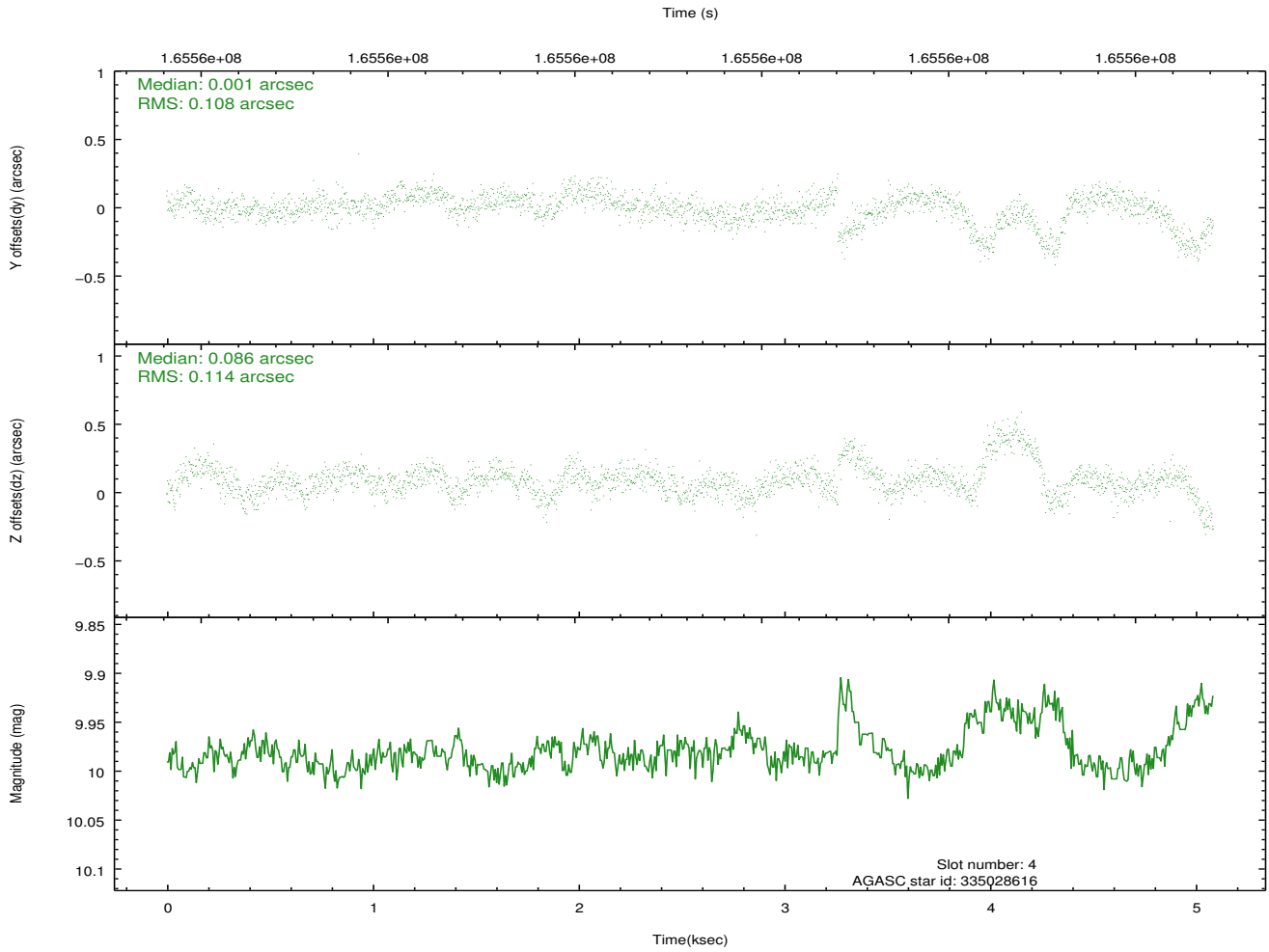
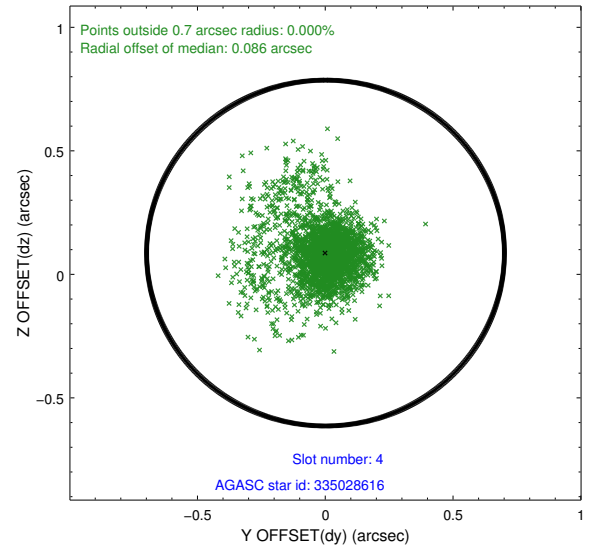
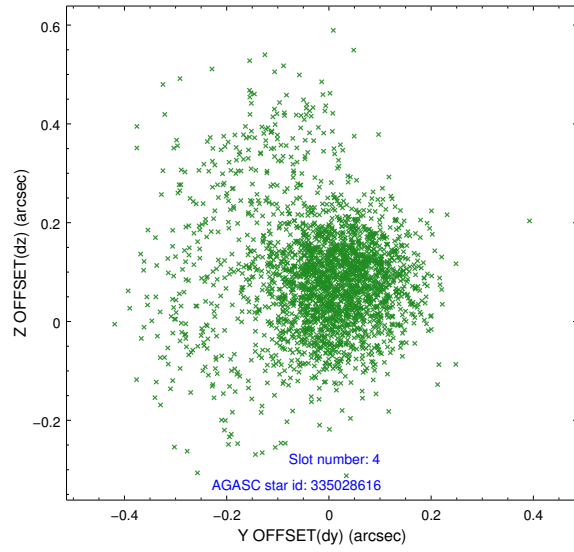
slot	status	id	mag	n_pts	med_dy	med_dz	dr1	dr2	ra	dec	mean_y	mean_z
0	FID	ACIS-I-1	7.24	1241	0.015	-0.007	0.006	0.011	0.000000	0.000000	937.07	-830.05
1	FID	ACIS-I-5	7.24	1241	-0.087	0.053	0.006	0.010	0.000000	0.000000	-1810.44	1066.96
2	FID	ACIS-I-6	7.26	1241	-0.020	0.024	0.007	0.011	0.000000	0.000000	401.33	1712.74
3	GUIDE	335027640	9.11	2478	0.116	-0.149	0.093	0.153	218.092211	33.193770	-201.19	111.48
4	GUIDE	335028616	9.98	2481	0.001	0.086	0.144	0.322	218.529874	33.175085	-1263.91	-672.25
5	GUIDE	335029368	10.13	2476	-0.059	-0.012	0.186	0.274	217.181018	33.065030	1641.85	2199.93
6	GUIDE	335029384	8.48	2481	-0.102	-0.041	0.087	0.155	217.848061	33.088477	130.29	871.23
7	GUIDE	335029528	10.40	2479	0.059	0.122	0.153	0.253	218.786422	33.290416	-1594.92	-1484.11

2.4 Star Slots

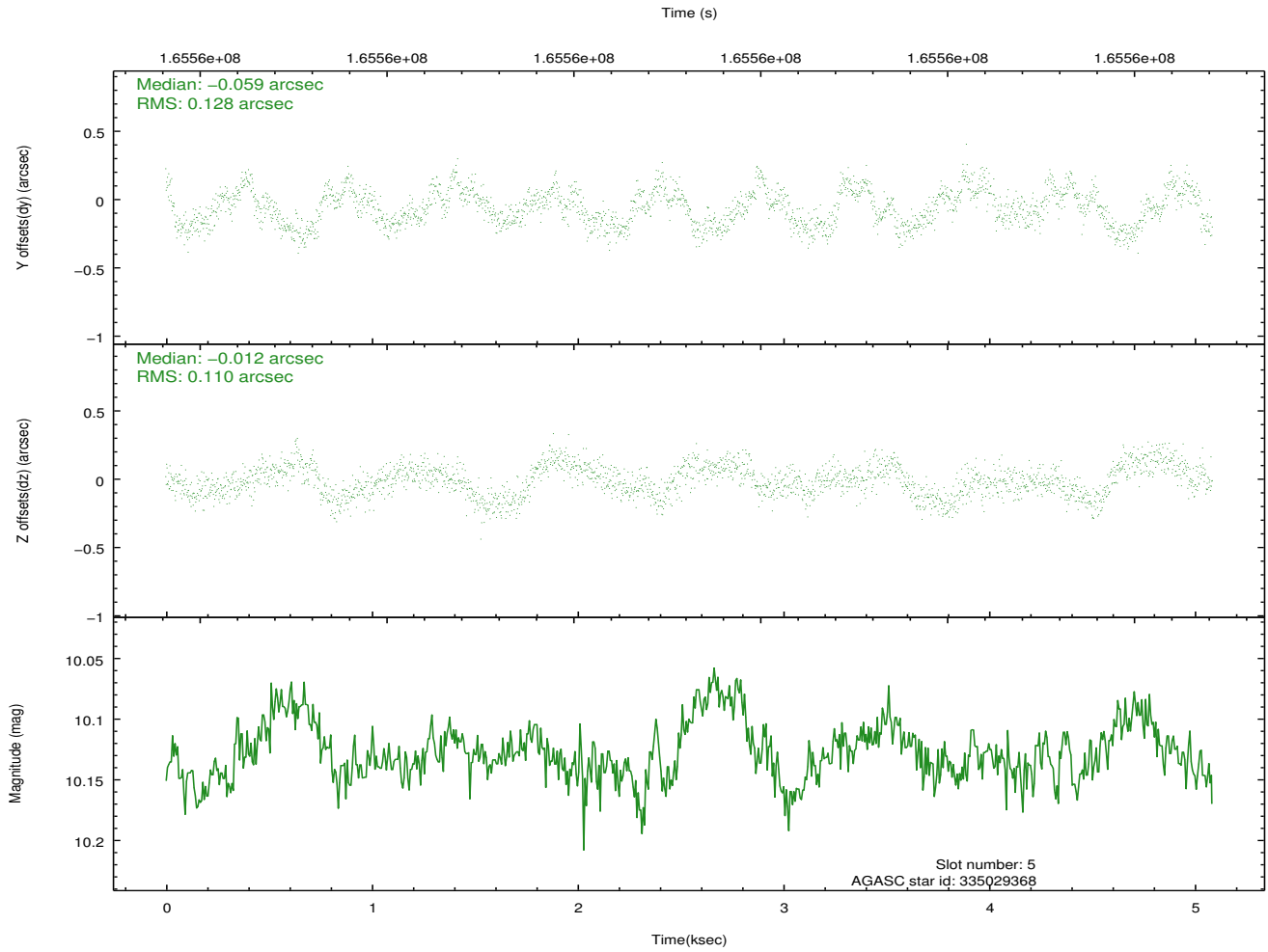
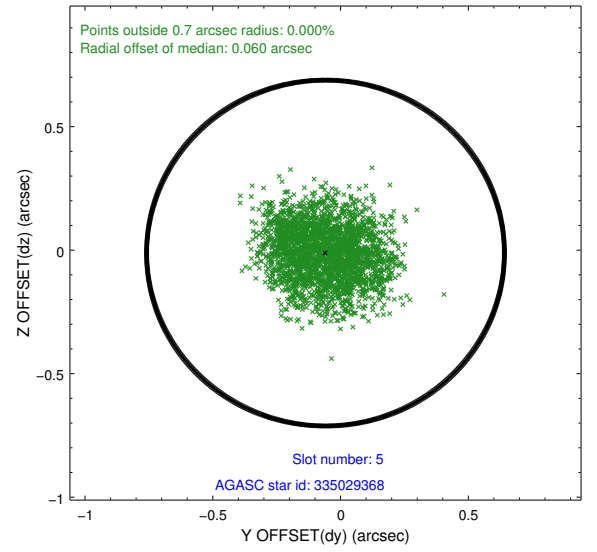
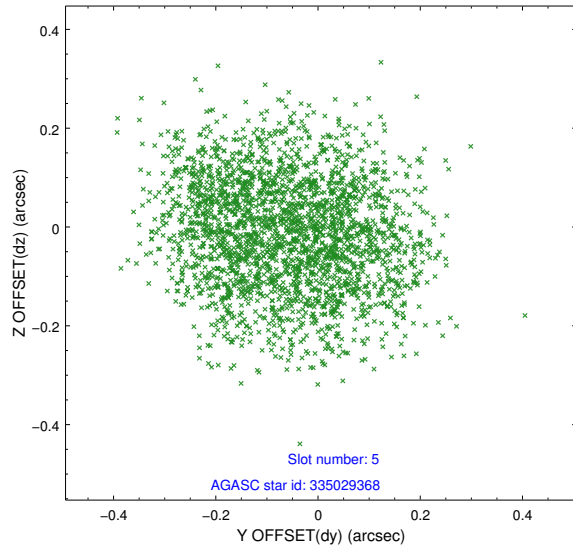
2.4.1 Slot 3



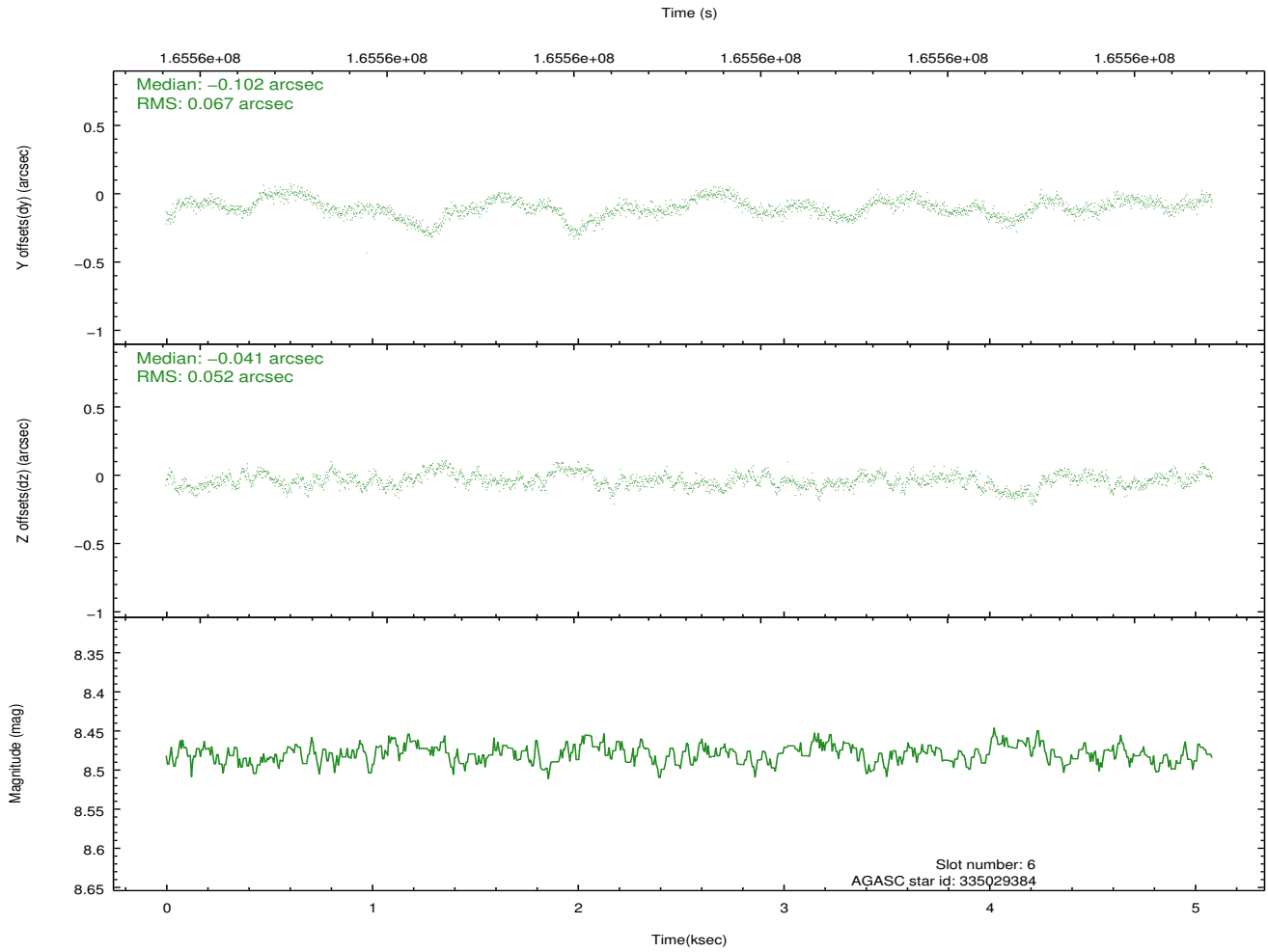
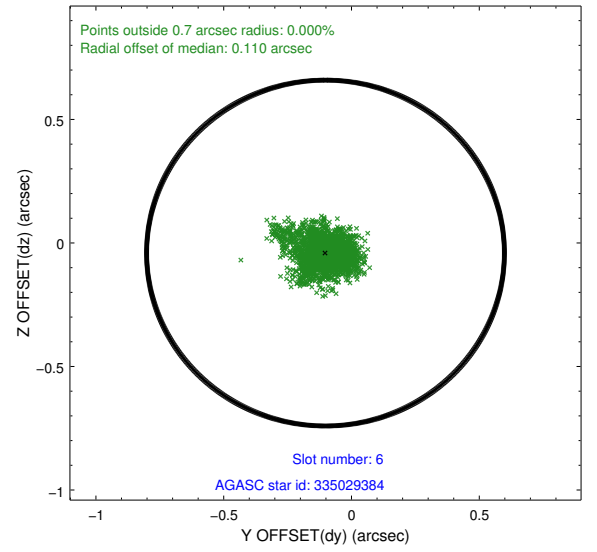
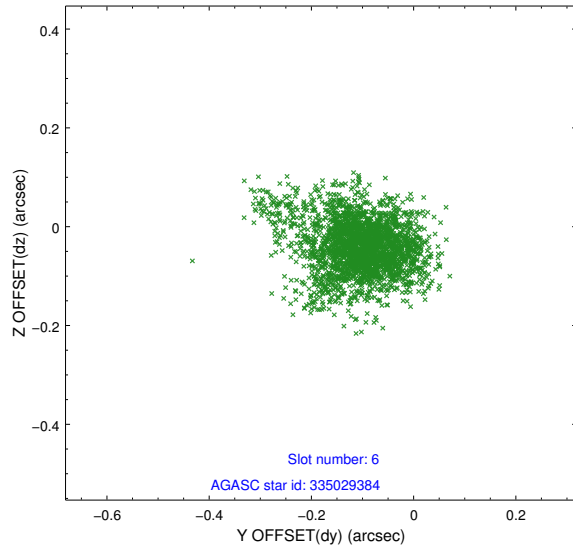
2.4.2 Slot 4



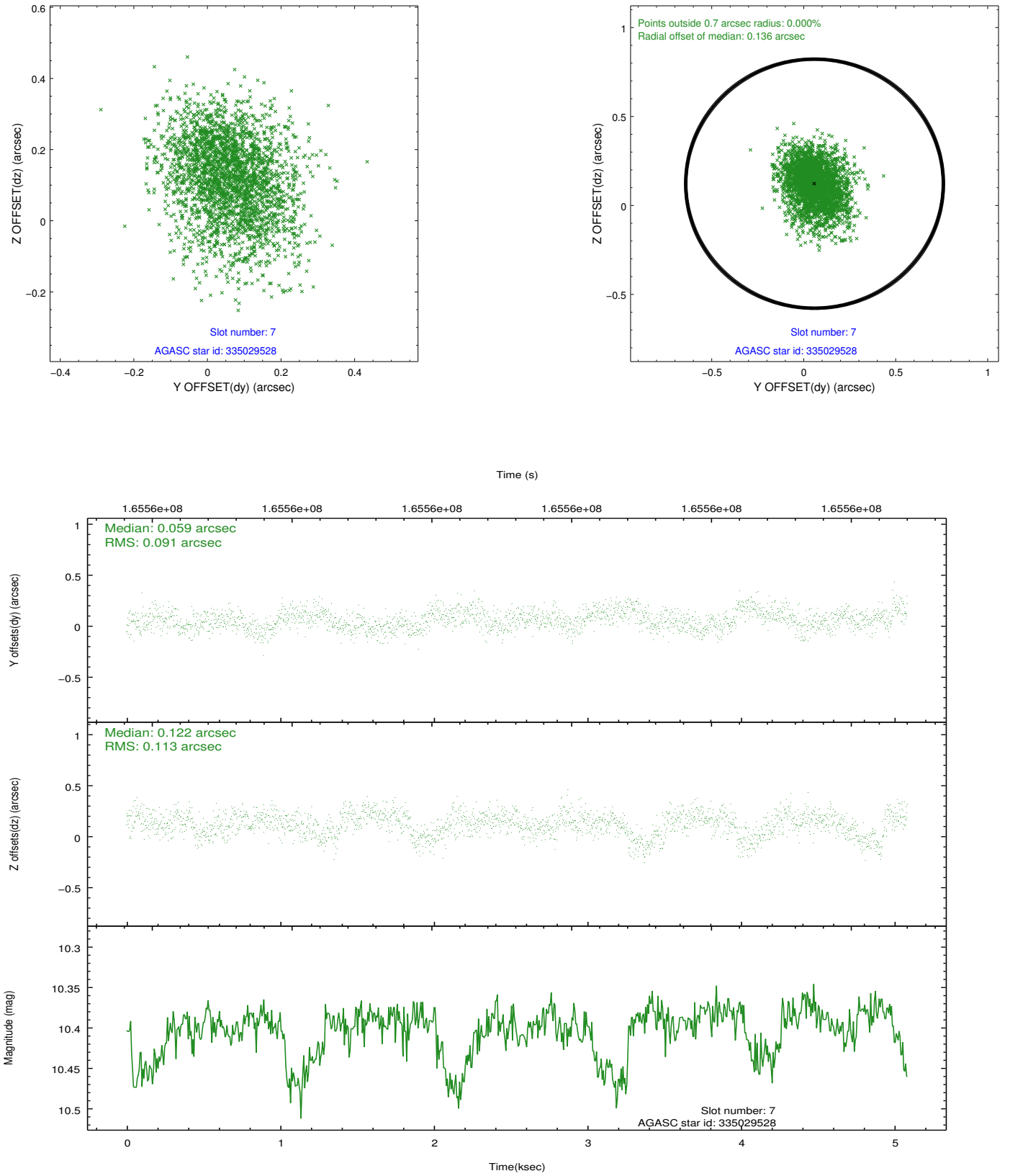
2.4.3 Slot 5



2.4.4 Slot 6

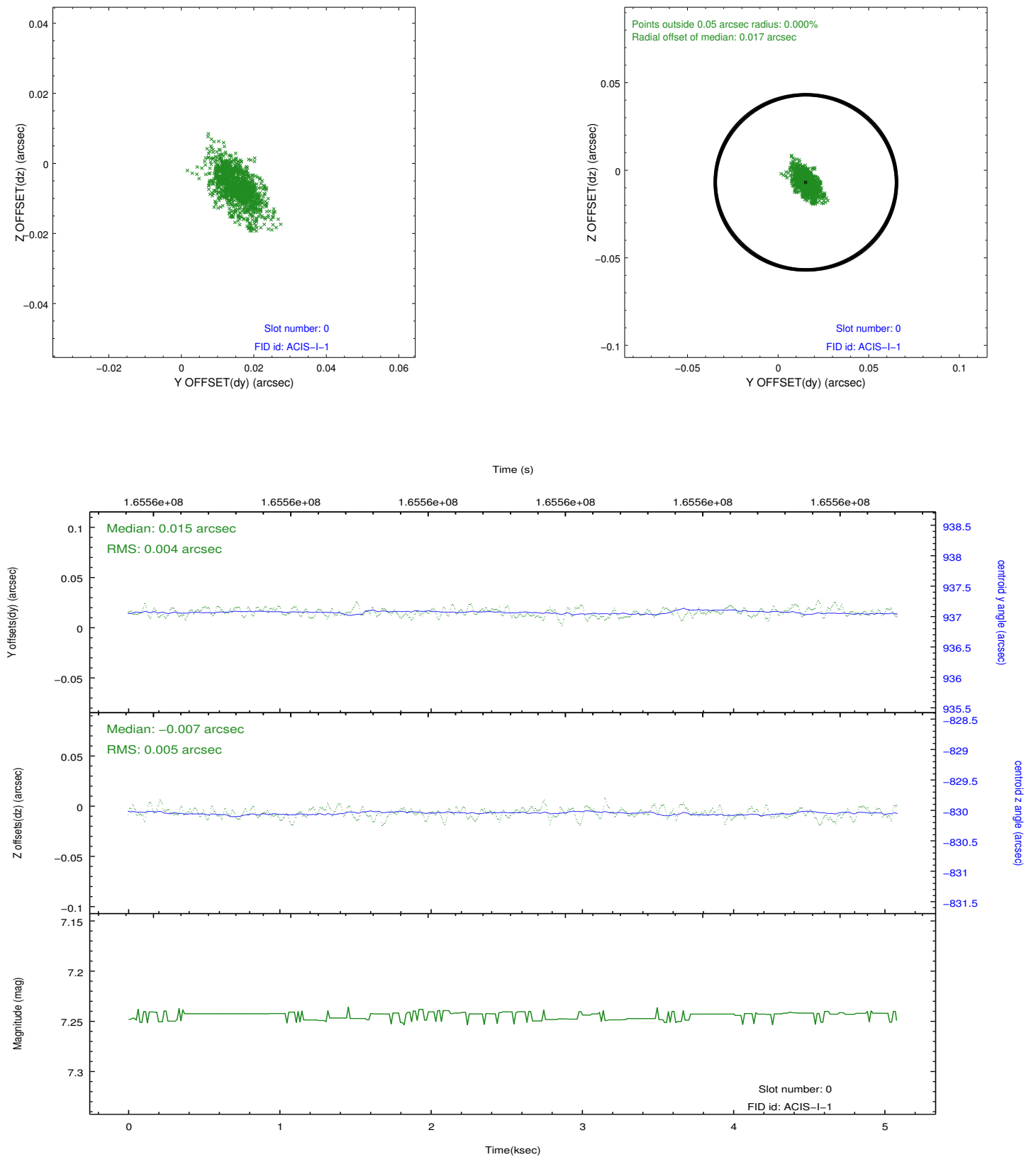


2.4.5 Slot 7

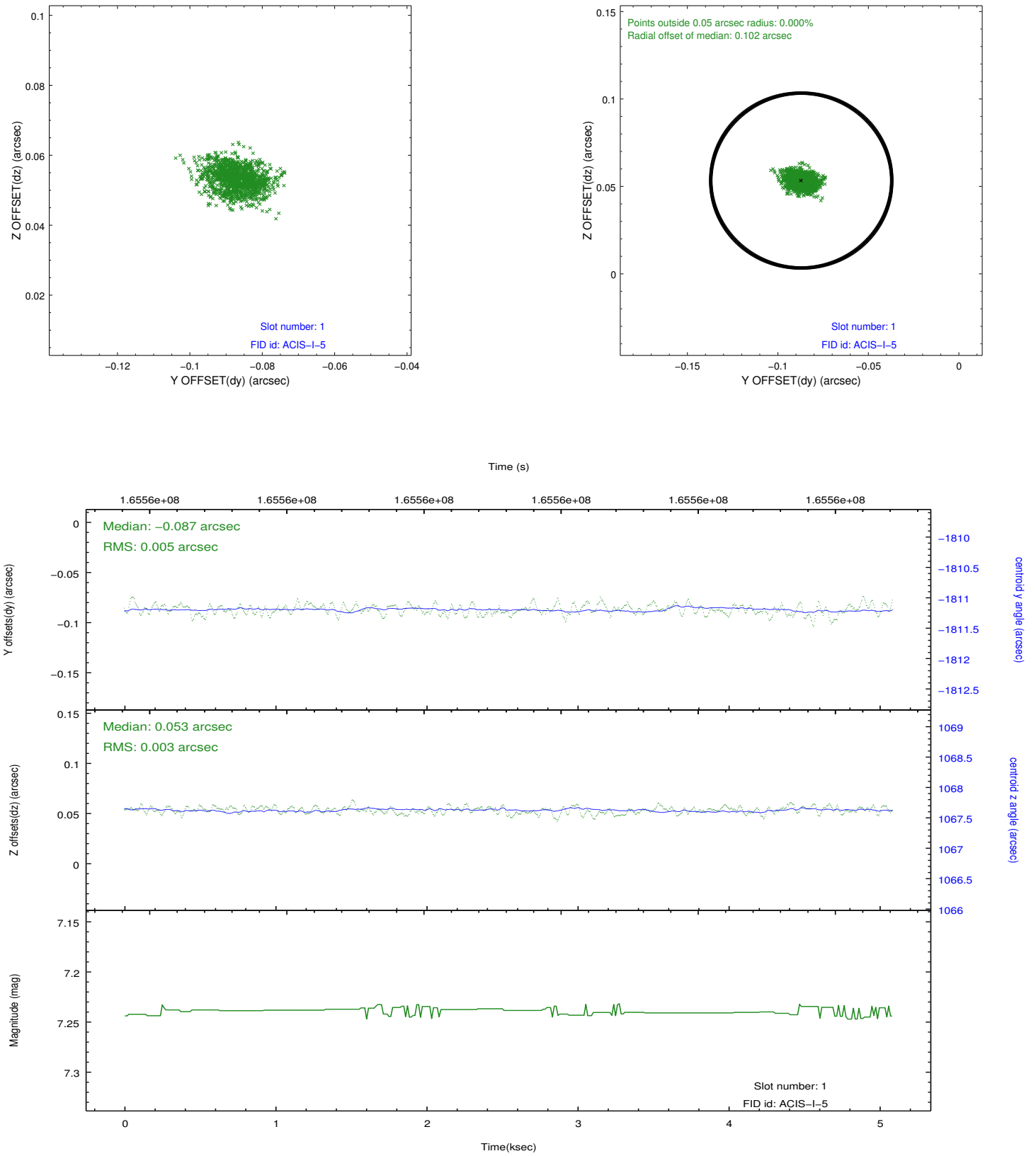


2.5 FID Slots

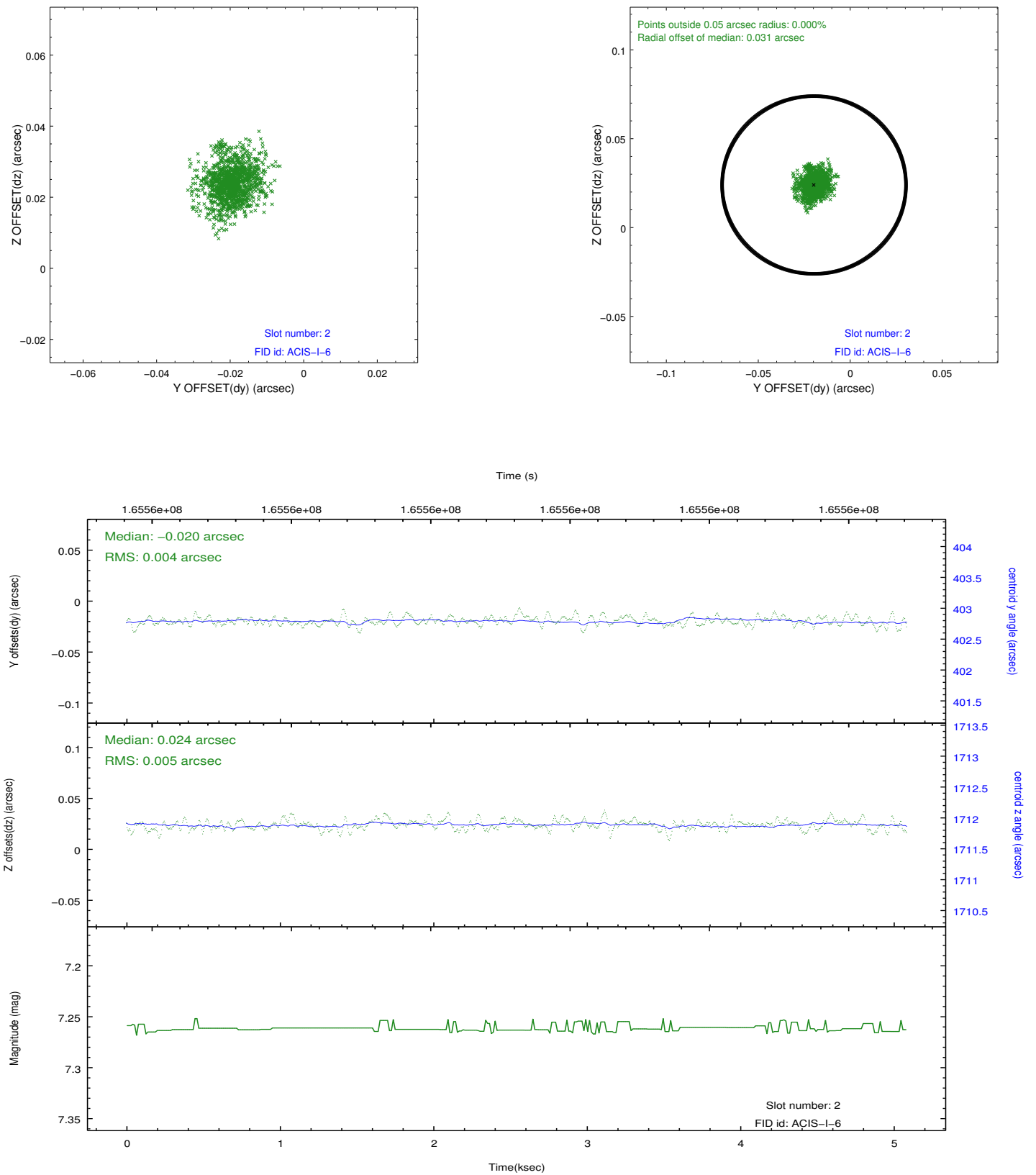
2.5.1 Slot 0



2.5.2 Slot 1



2.5.3 Slot 2



A Summary

A.1 Status

V&V Scientist	Jen Lauer
V&V Date (YYYY-MM-DD)	2012.11.09
V&V Edition	1
V&V Disposition and Status	OK
V&V Charge Time	4.674

A.2 Comments