

V&V Reference Report

L2 ASCDS Version : 7.6.8

Observation 4251 - L2 Version 001
Chandra X-Ray Center

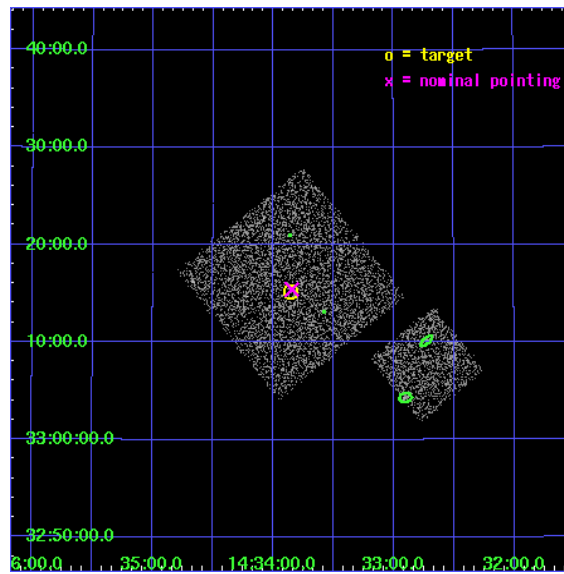
L2 Processing Date : Jul 30 2006

Contents

1	Front	2
2	OBI	3
2.1	OBI	3
2.1.1	Images	3
2.1.2	Bias	3
2.1.3	Parameters	4
2.1.4	Events	4
2.2	Compared Parameters	5
2.3	Aspect	6
2.4	Star Slots	9
2.4.1	Slot 3	9
2.4.2	Slot 4	10
2.4.3	Slot 5	11
2.4.4	Slot 6	12
2.4.5	Slot 7	13
2.5	FID Slots	14
2.5.1	Slot 0	14
2.5.2	Slot 1	15
2.5.3	Slot 2	16
3	Point Sources	17
A	Summary	18
A.1	Status	18
A.2	Comments	18

1 Front

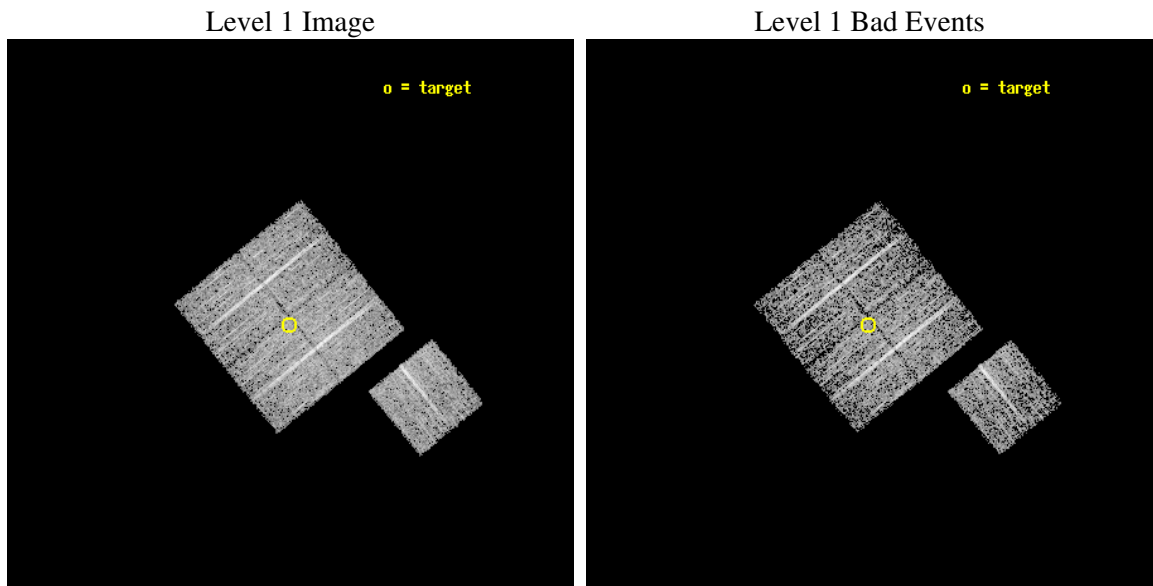
seq_num	900294
obs_id	4251
title	A CHANDRA WIDE-FIELD SURVEY TO MAP THE COSMIC WEB AND INVESTIGATE THE EVOLUTION OF NUCLEAR ACCRETION
observer	Dr. Christine Jones
object	SD40
dtcycle	0
cycle	P
ra_targ	218.463931
dec_targ	33.253224
ra_nom	218.46137787584
dec_nom	33.257303797132
roll_nom	141.01008910971
revision	3
ontime	4674.7999910116
livetime	4613.7202875914
ontime0	4674.7999910116
ontime1	4671.6590306759
ontime2	4674.7999910116
ontime3	4674.7999910116
ontime6	4674.7999910116
l2events	9352



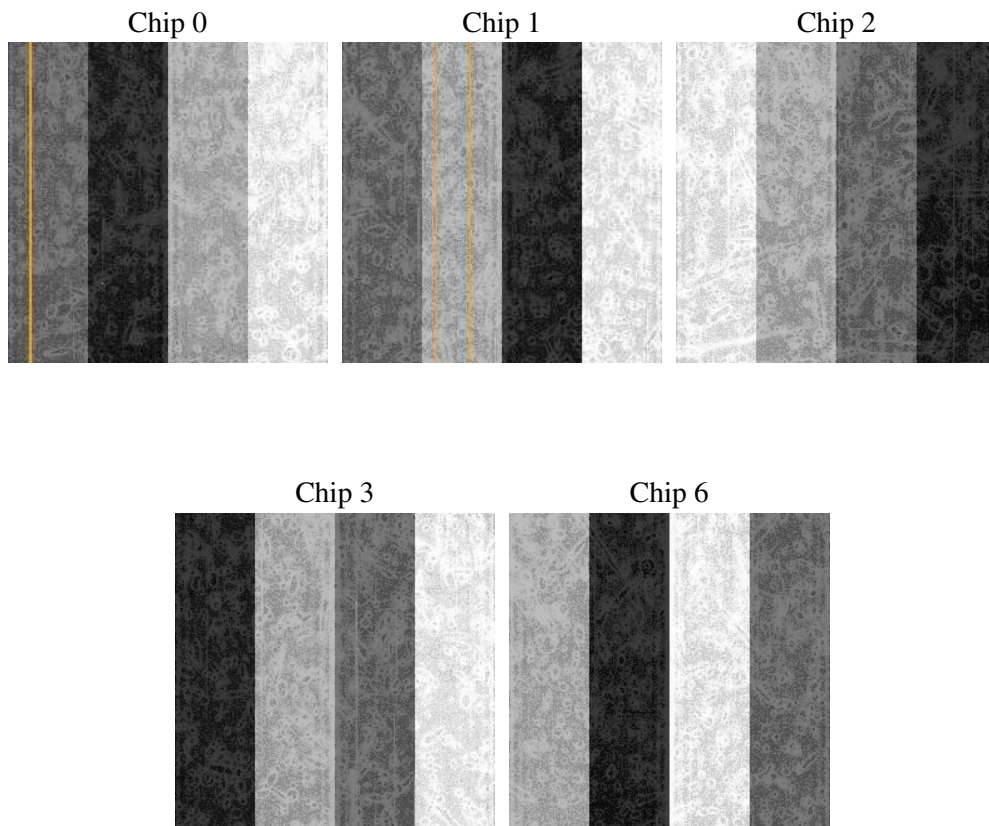
2 OBI

2.1 OBI

2.1.1 Images



2.1.2 Bias



2.1.3 Parameters

obi_num	1
ascdsver	7.6.8
caldbver	3.2.2
date	2006-07-30T02:26:09
revision	3

sched_exp_time	4900.000000
ontime	4680.100127399
ontime0	4680.1001473069
ontime1	4676.9591869712
ontime2	4680.100127399
ontime3	4680.100127399
ontime6	4683.2411673963
l1events	115006

2.1.4 Events

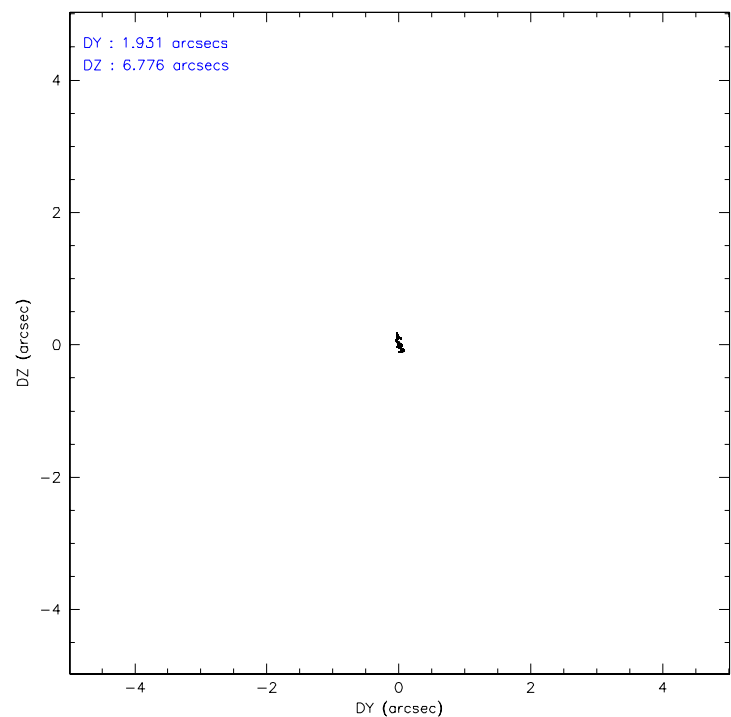
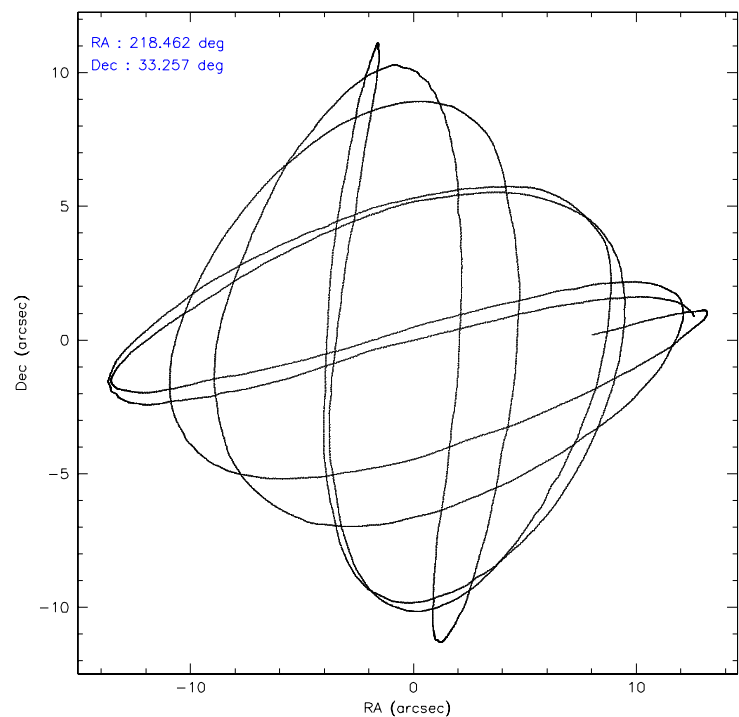
	ccd 0	ccd 1	ccd 2	ccd 3	ccd 6
level 1 events	21469	22130	25111	23897	22399
rejected events	19138	19785	22822	21802	20020
rejected %	89%	89%	90%	91%	89%

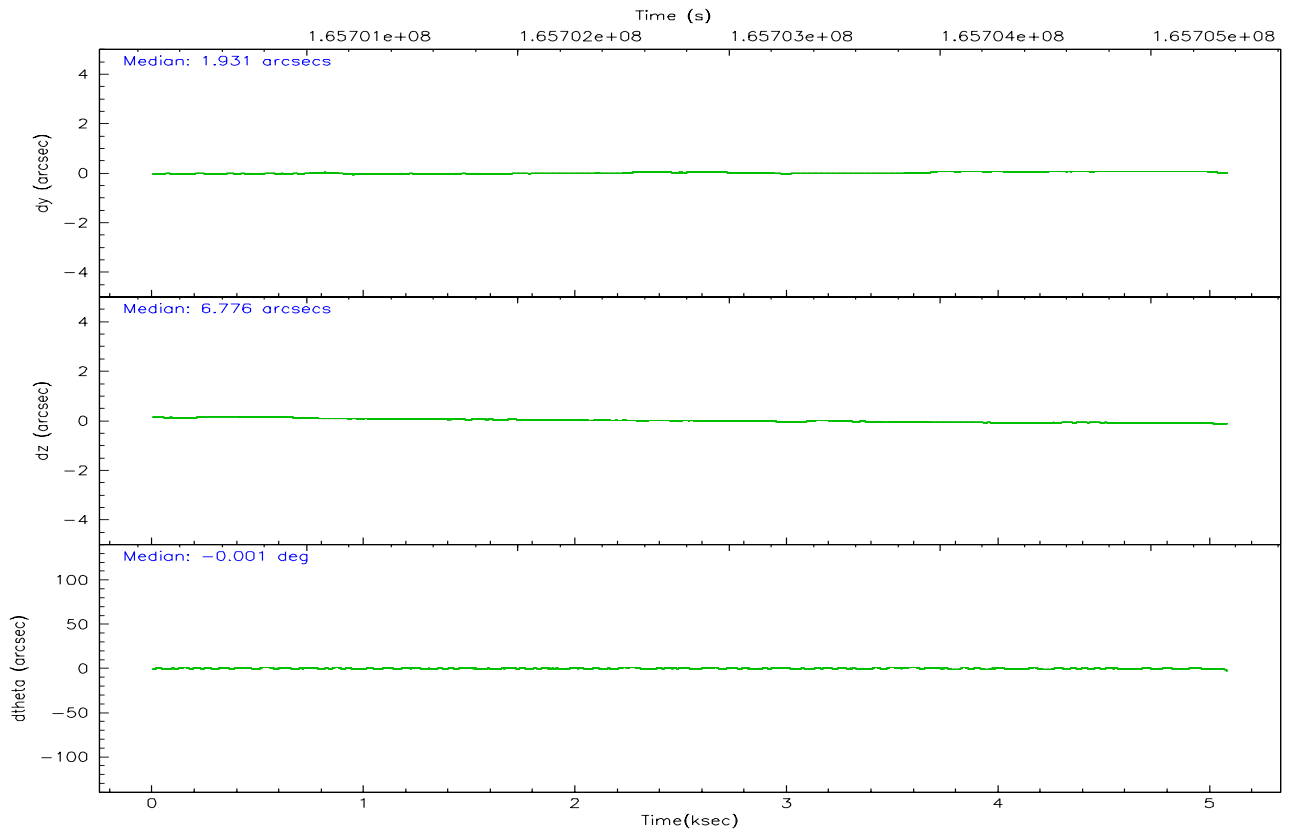
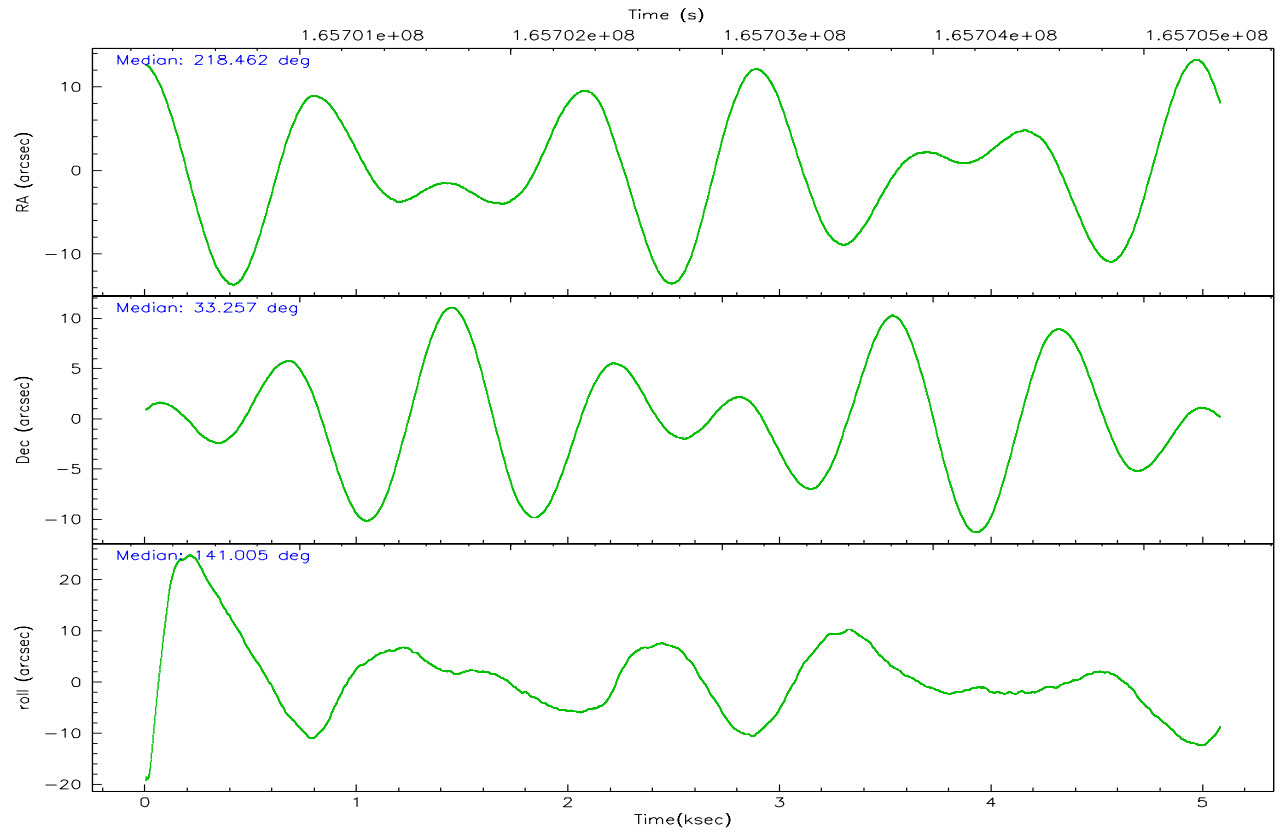
	ccd 0	ccd 1	ccd 2	ccd 3	ccd 6
grade 0 events	857	785	859	771	895
	3%	3%	3%	3%	3%
grade 1 events	16	12	15	20	9
	0%	0%	0%	0%	0%
grade 2 events	534	461	518	423	501
	2%	2%	2%	1%	2%
grade 3 events	280	313	263	264	284
	1%	1%	1%	1%	1%
grade 4 events	243	294	267	252	253
	1%	1%	1%	1%	1%
grade 5 events	726	705	630	752	787
	3%	3%	2%	3%	3%
grade 6 events	418	493	384	387	448
	1%	2%	1%	1%	2%
grade 7 events	18395	19067	22175	21028	19222
	85%	86%	88%	87%	85%

2.2 Compared Parameters

Parameter	Planned	Actual	Parameter	Planned	Actual
Instrument	ACIS	ACIS	Obspar format version number	6	6
Detector	ACIS-01236	ACIS-01236	Obspar file type	PREDICTED	ACTUAL
Grating	NONE	NONE	Obspar update status	NONE	UPDATED
Data mode	VFAINT	VFAINT	On-chip summing requested	N	N
Observation mode	POINTING	POINTING	Subarray requested	NONE	NONE
Pointing RA	218.493687	218.4613778758402	Alternating exposures requested	N	N
Pointing Dec	33.253143	33.25730379713212	Primary exposure time	0.000000	3.1
Pointing Roll	140.783684	141.0100891097144			
SIM focus pos (mm)	-0.782348	-0.7809083437167272			
SIM defocus (mm)	0	0.001439871863259334			
SIM translation stage pos (mm)	-233.592463	-233.5874344608287			
SIM translation stage offset (mm)	0	-0.005018542100998502			
Observation start time	165700457.184000	165700081.38799			
Observation start date	2003-04-02T19:53:13	2003-04-02T19:48:01			
Observation end time	165705357.184000	165705491.33822			
Observation end date	2003-04-02T21:14:53	2003-04-02T21:18:11			
Read mode	TIMED	TIMED			

2.3 Aspect



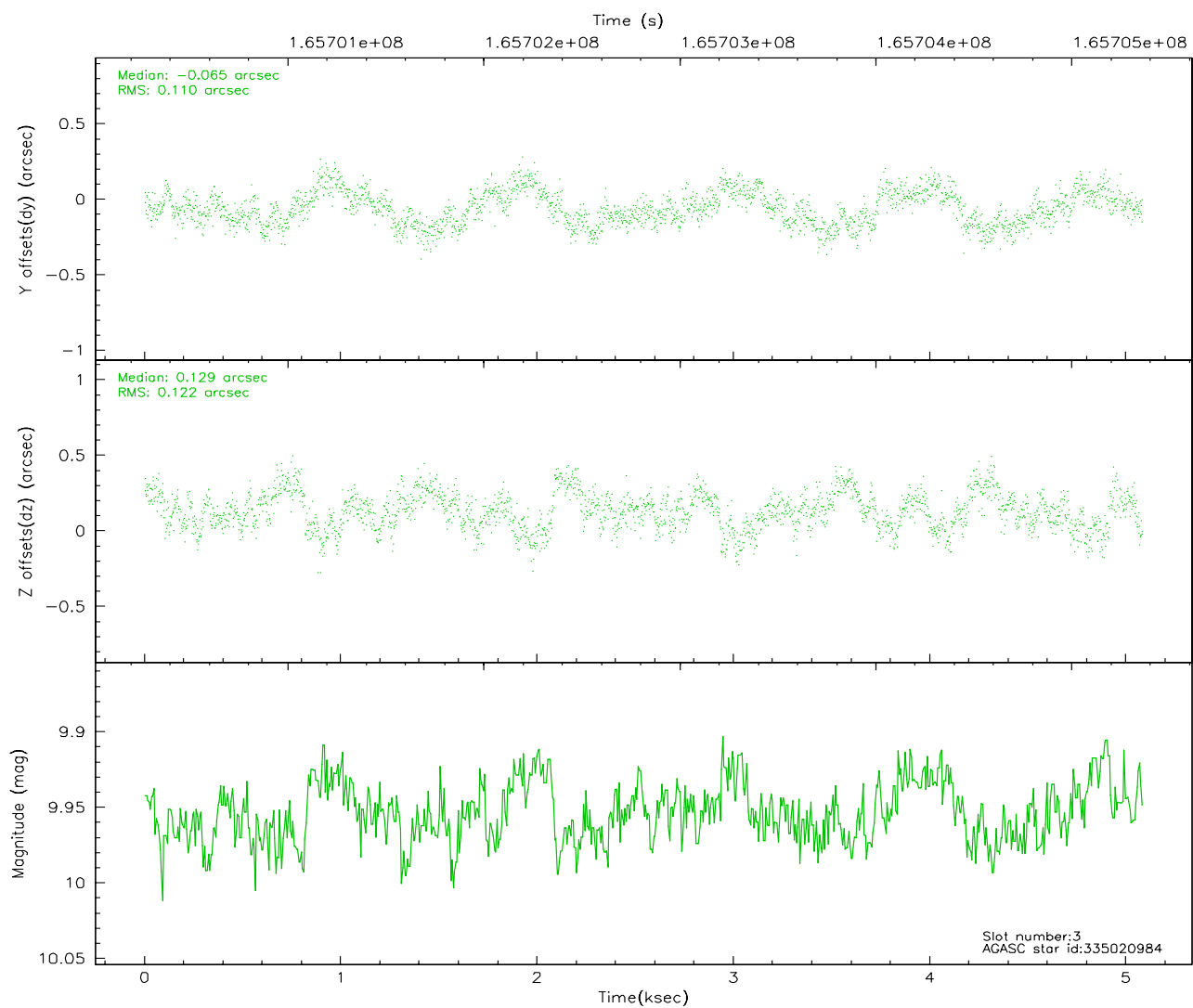
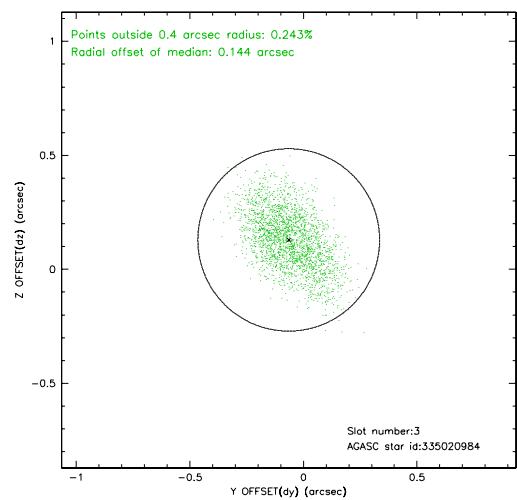
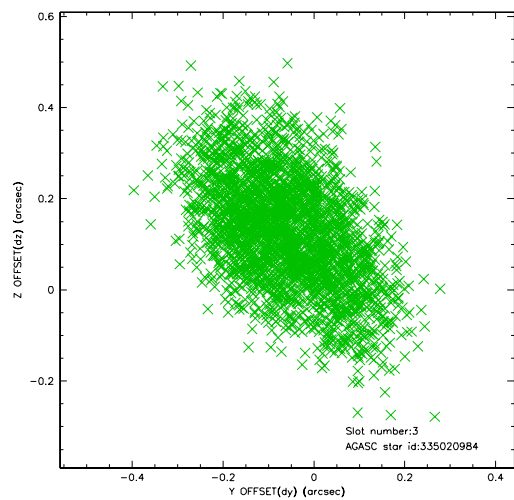


Slot Statistics

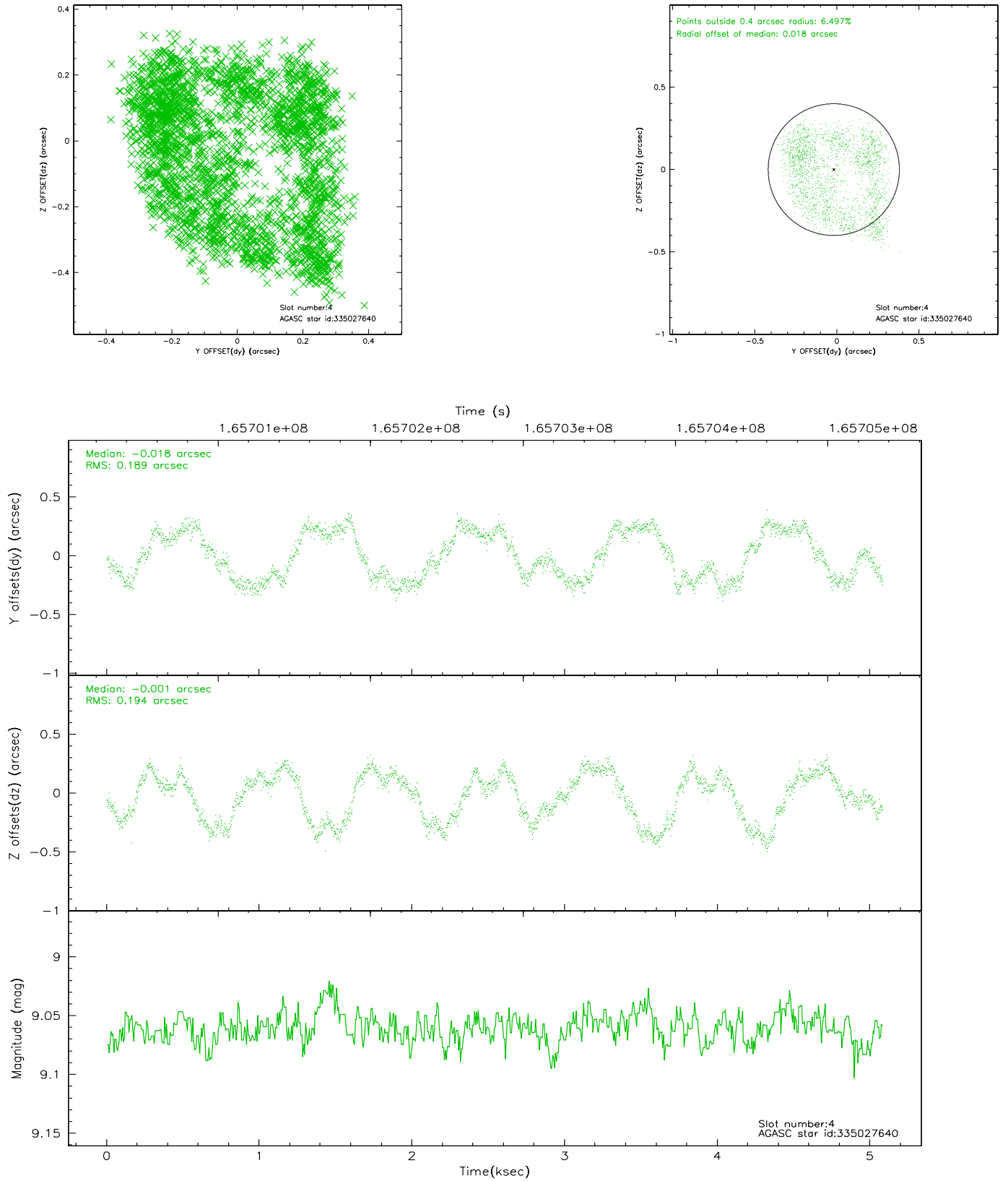
slot	status	id	mag	n_pts	med_dy	med_dz	dr1	dr2	ra	dec	mean_y	mean_z
0	FID	ACIS-I-1	7.25	1237	-0.017	0.039	0.006	0.011	0.000000	0.000000	937.84	-830.16
1	FID	ACIS-I-5	7.24	1238	-0.035	0.042	0.006	0.009	0.000000	0.000000	-1809.57	1066.80
2	FID	ACIS-I-6	7.26	1239	-0.039	-0.010	0.007	0.012	0.000000	0.000000	402.13	1712.56
3	GUIDE	335020984	9.95	2466	-0.065	0.129	0.174	0.287	218.841668	33.815112	474.90	-2226.55
4	GUIDE	335027640	9.06	2478	-0.018	-0.001	0.292	0.422	218.092211	33.193770	803.97	927.88
5	GUIDE	335028616	9.98	2412	0.085	-0.123	0.143	0.228	218.529874	33.175085	-261.68	149.25
6	GUIDE	335029384	8.49	2478	-0.101	-0.069	0.090	0.142	217.848061	33.088477	1137.72	1686.21
7	GUIDE	335154960	9.56	2478	0.097	0.097	0.121	0.193	219.209961	33.303073	-1550.81	-1506.82

2.4 Star Slots

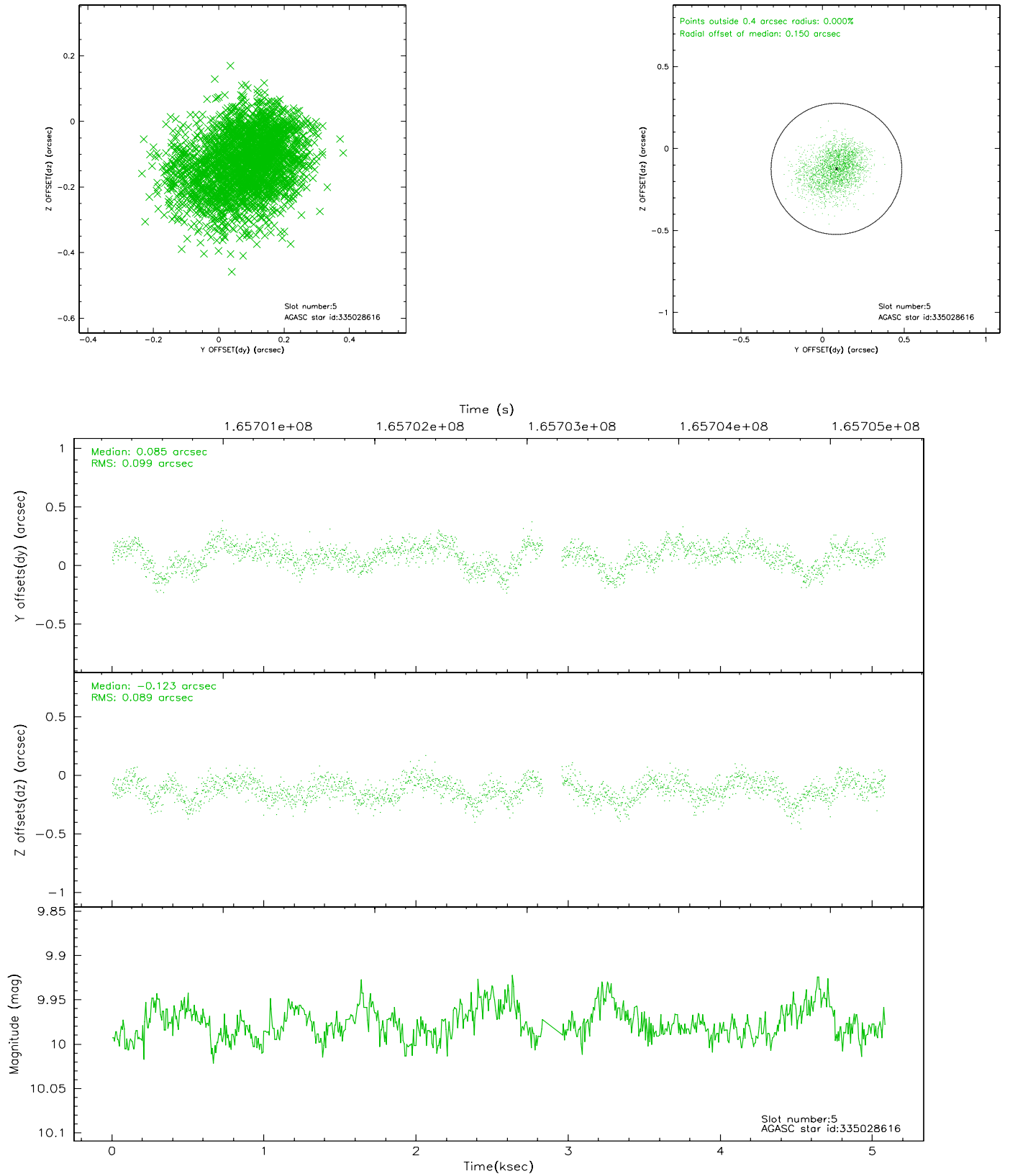
2.4.1 Slot 3



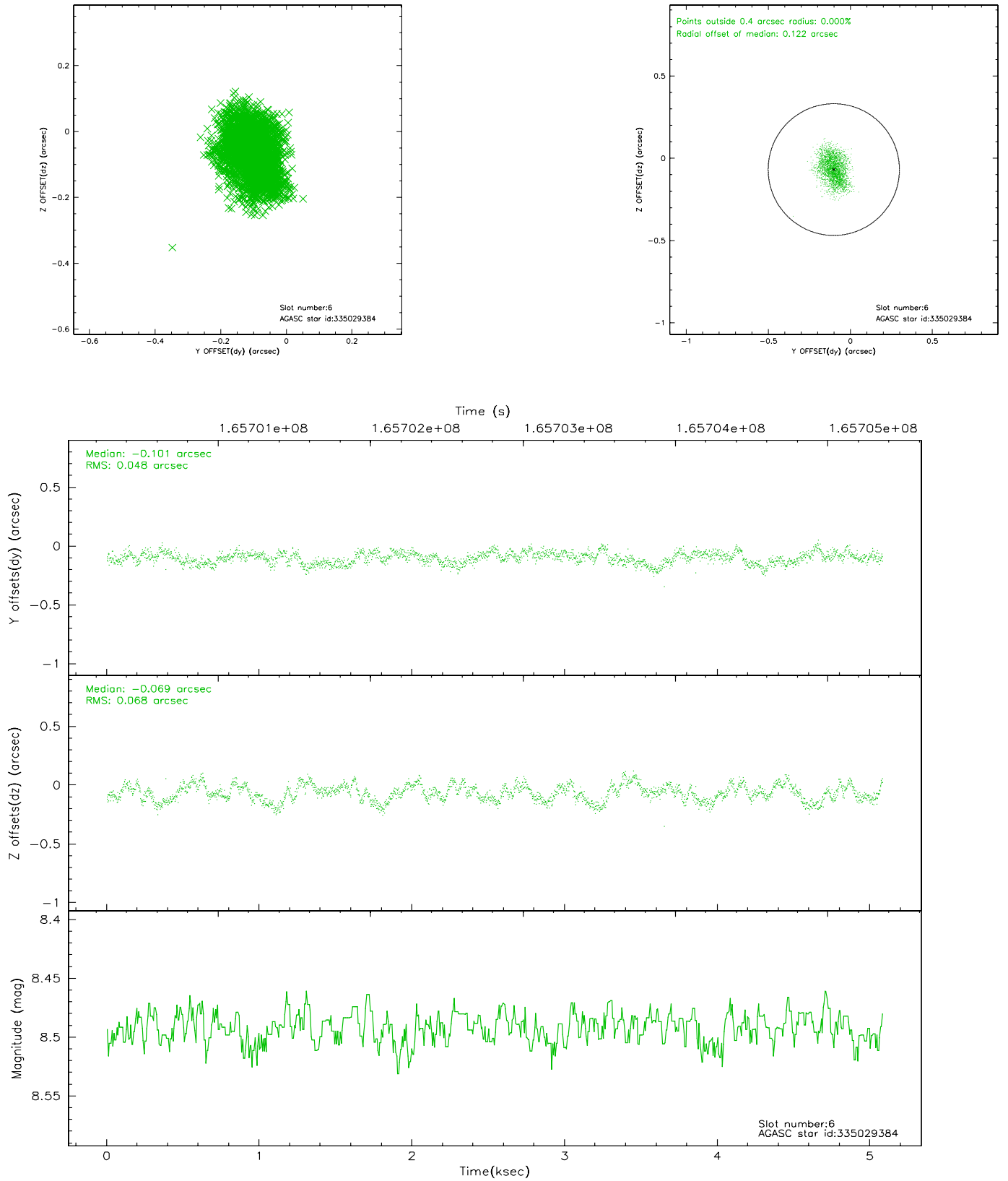
2.4.2 Slot 4



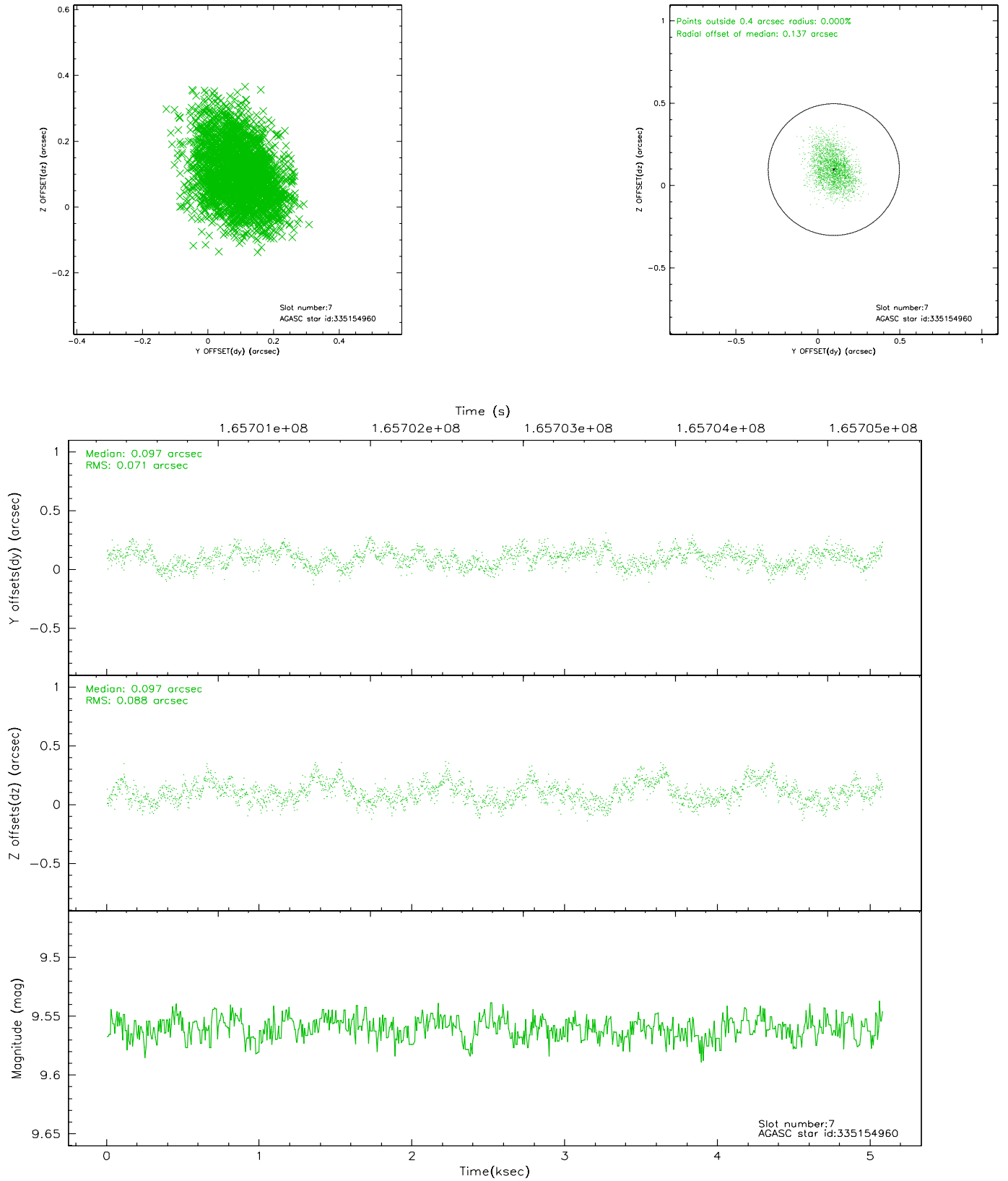
2.4.3 Slot 5



2.4.4 Slot 6

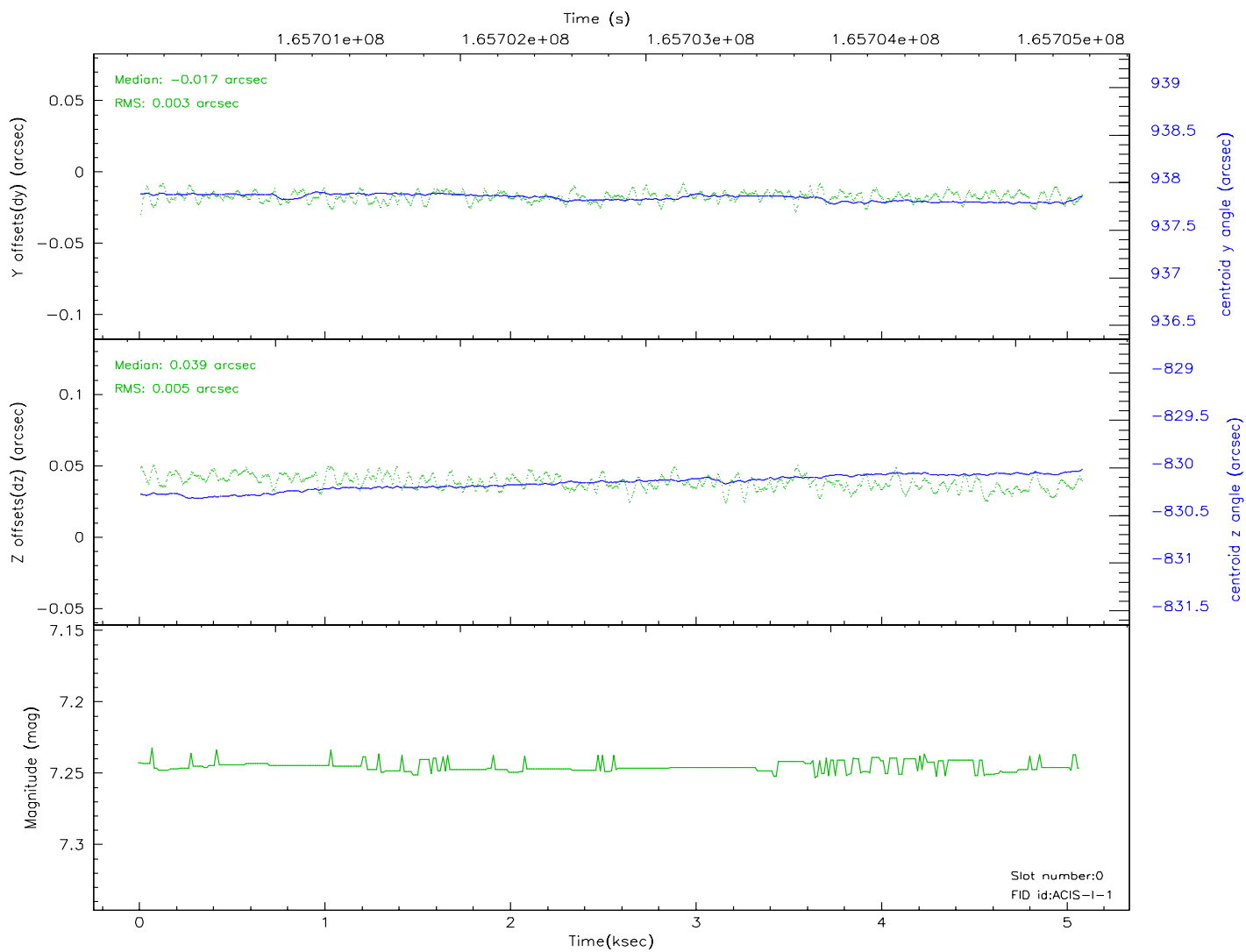
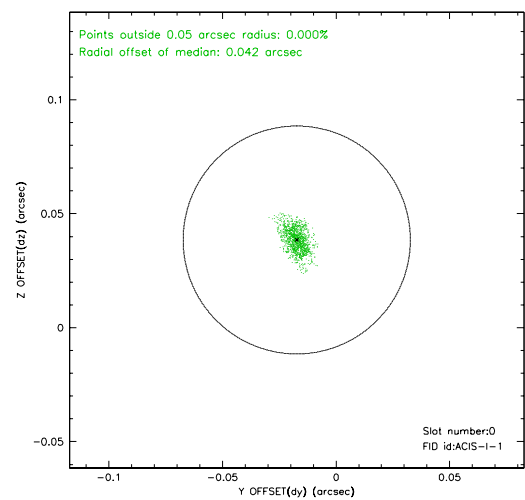
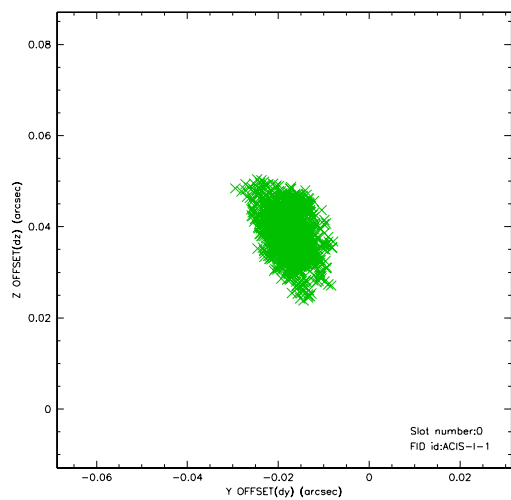


2.4.5 Slot 7

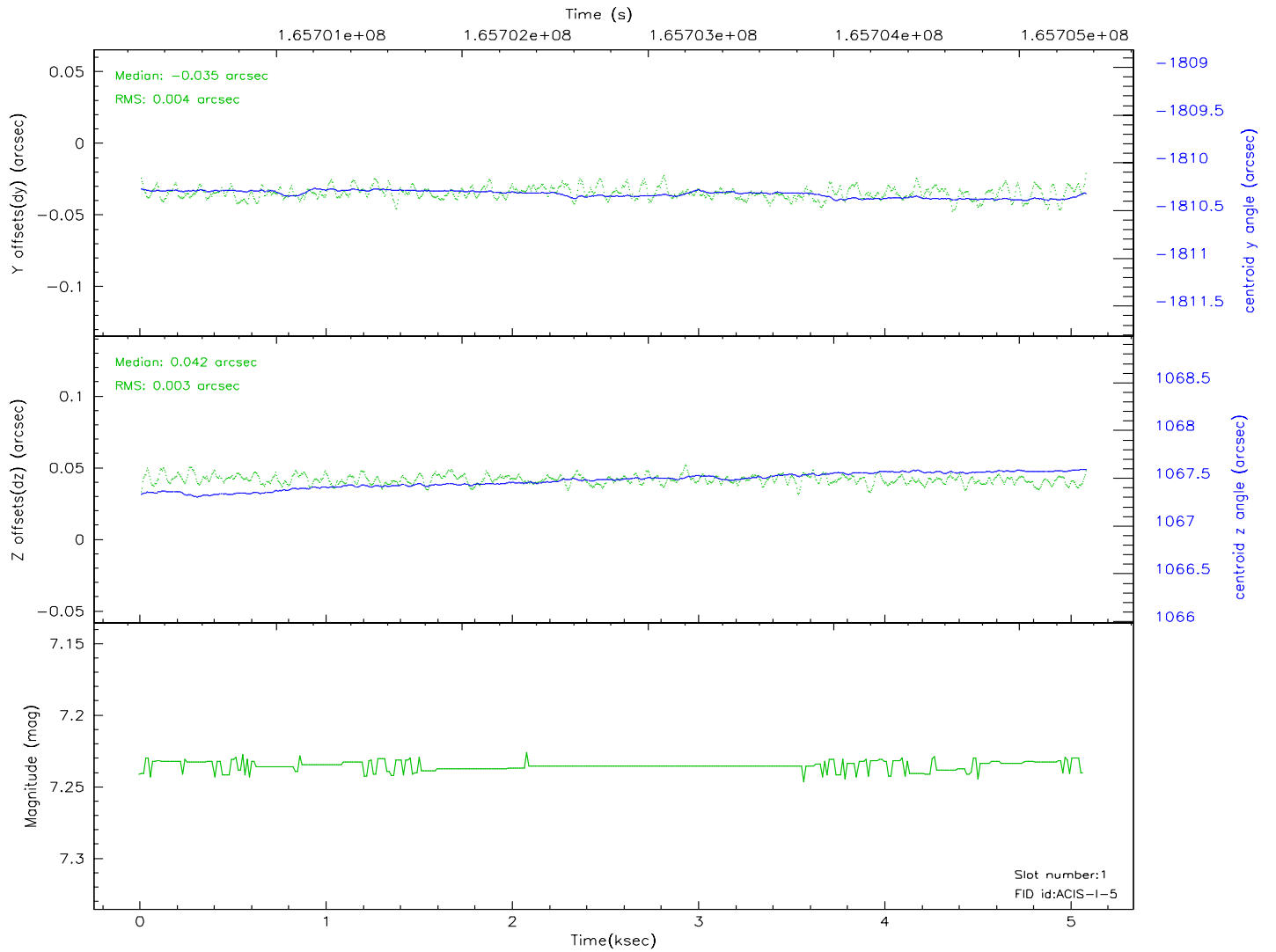
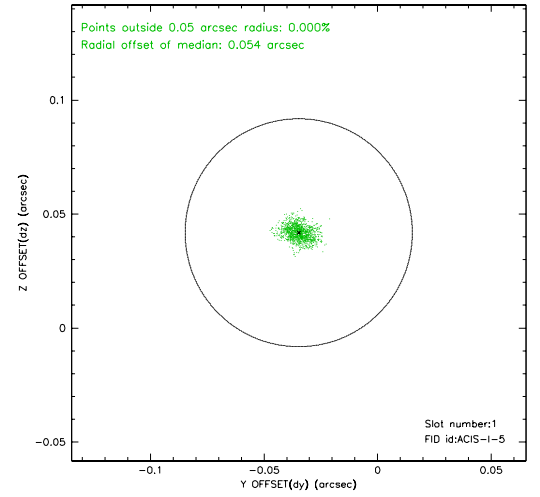
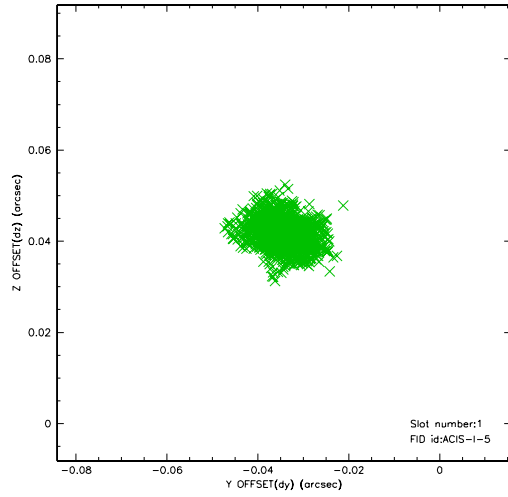


2.5 FID Slots

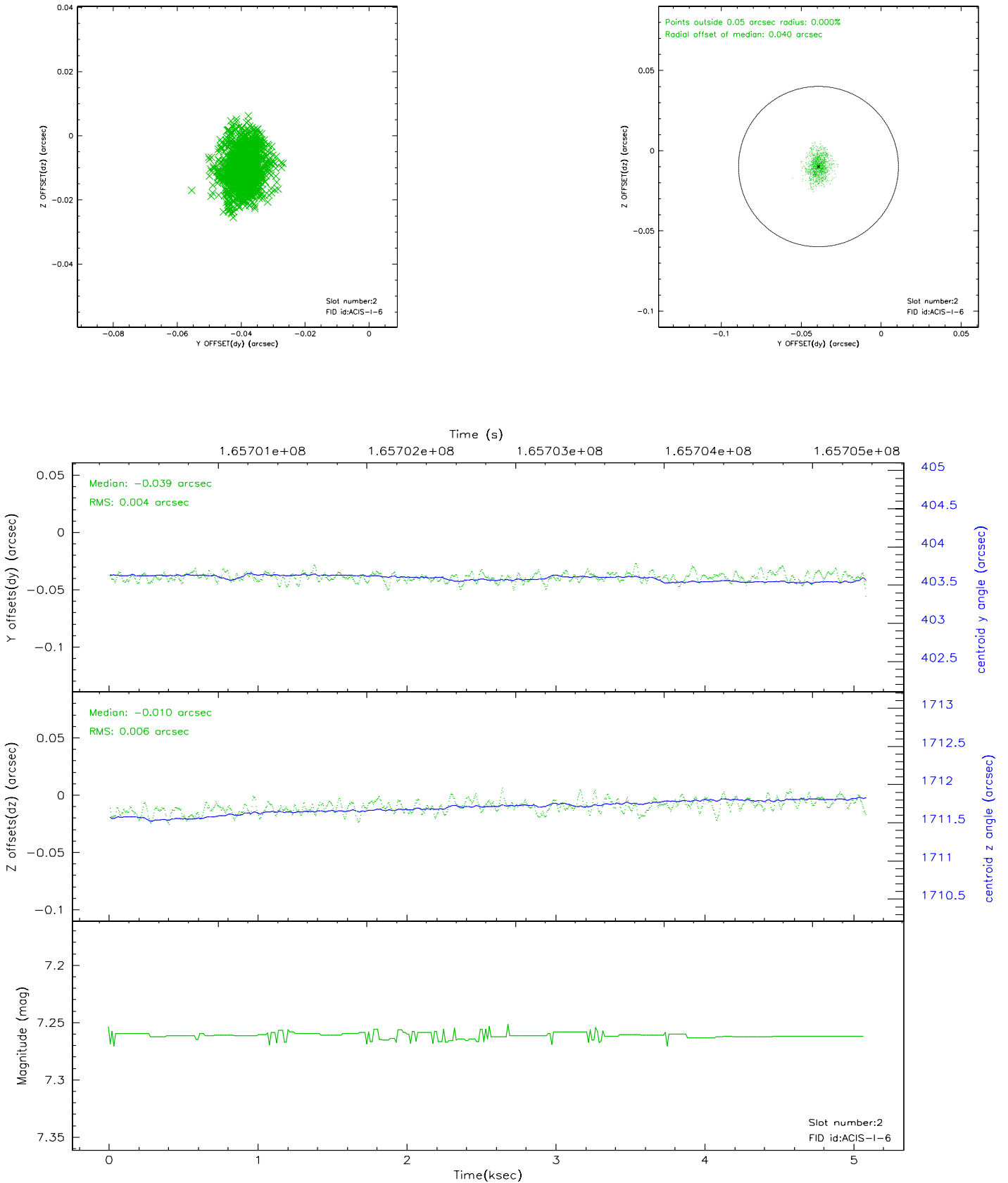
2.5.1 Slot 0



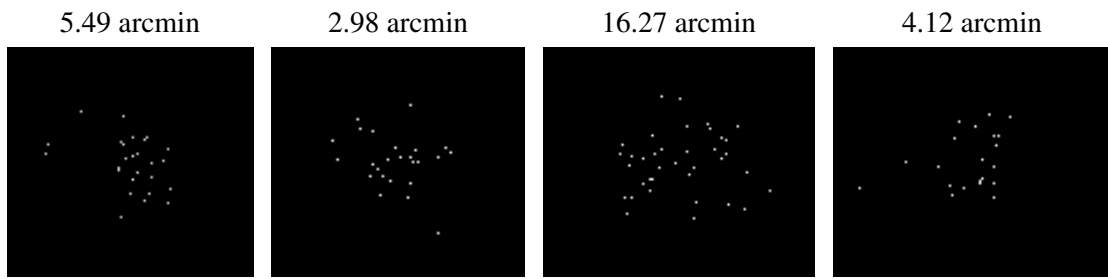
2.5.2 Slot 1



2.5.3 Slot 2



3 Point Sources



A Summary

A.1 Status

V&V Scientist	Jen Lauer
V&V Date (YYYY-MM-DD)	2006.07.30
V&V Edition	1
V&V Disposition and Status	OK
V&V Charge Time	4.675

A.2 Comments