

V&V Reference Report

L2 ASCDS Version : 8.4.5

Observation 4250 - L2 Version 3
Chandra X-Ray Center

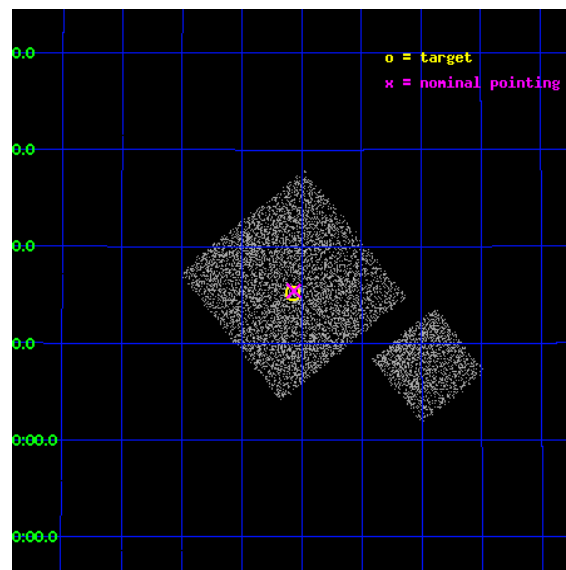
L2 Processing Date : Oct 25 2012

Contents

1	Front	2
2	OBI	3
2.1	OBI	3
2.1.1	Images	3
2.1.2	Bias	3
2.1.3	Parameters	4
2.1.4	Events	4
2.2	Compared Parameters	5
2.3	Aspect	6
2.4	Star Slots	9
2.4.1	Slot 3	9
2.4.2	Slot 4	10
2.4.3	Slot 5	11
2.4.4	Slot 6	12
2.4.5	Slot 7	13
2.5	FID Slots	14
2.5.1	Slot 0	14
2.5.2	Slot 1	15
2.5.3	Slot 2	16
A	Summary	17
A.1	Status	17
A.2	Comments	17

1 Front

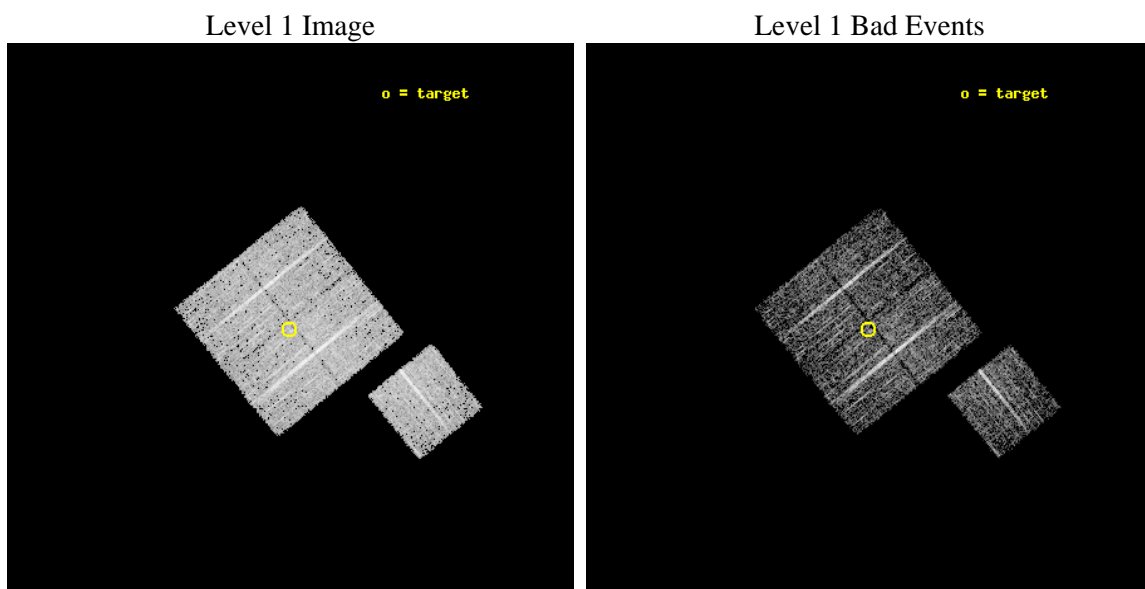
seq_num	900293	Sequence number
obs_id	4250	Observation id
title	A CHANDRA WIDE-FIELD SURVEY TO MAP THE COSMIC WEB AND INVESTIGATE THE EVOLUTION OF NUCLEAR ACCRETION	Proposal title
observer	Dr. Christine Jones	Principal investigator
object	SD29	Source name
dtcycle	0	
cycle	P	events from which exps? Prim/Second/Both
ra_targ	218.893848	Observer's specified target RA [deg]
dec_targ	33.253224	Observer's specified target Dec [deg]
ra_nom	218.89118113951	Nominal RA [deg]
dec_nom	33.257288237762	Nominal Dec [deg]
roll_nom	141.01015296823	Nominal Roll [deg]
revision	3	Processing version of data
ontime	4773.9999907911	Sum of GTIs [s]
livetime	4711.6241663437	Livetime [s]
ontime0	4773.9999907911	Sum of GTIs [s]
ontime1	4773.9999907911	Sum of GTIs [s]
ontime2	4773.9999907911	Sum of GTIs [s]
ontime3	4773.9999907911	Sum of GTIs [s]
ontime6	4773.9999907911	Sum of GTIs [s]
l2events	9764	Number of level 2 events



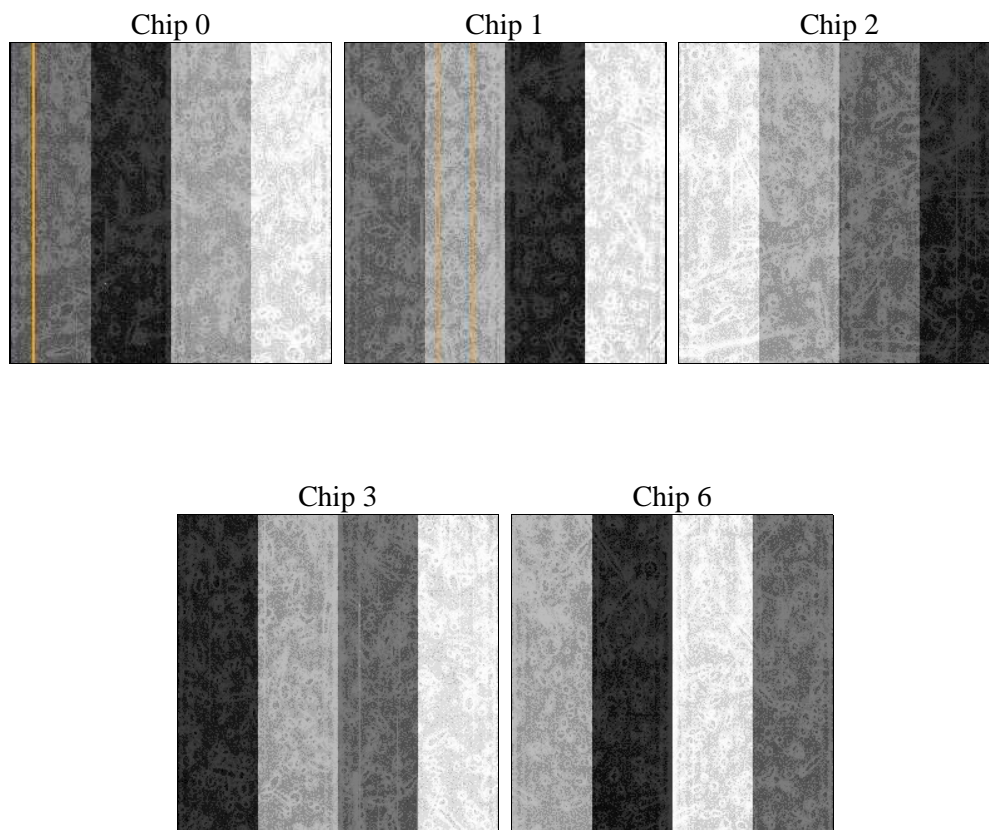
2 OBI

2.1 OBI

2.1.1 Images



2.1.2 Bias



2.1.3 Parameters

obi_num	1	Obi number	sched_exp_time	5000.000000	[s] Scheduled observation exposure time
ascdsver	8.4.5	Processing system revision	ontime	4773.9999907911	Sum of GTIs [s]
caldsver	4.5.2	 	ontime0	4773.9999907911	Sum of GTIs [s]
date	2012-10-25T23:42:23	Date and time of file creation	ontime1	4773.9999907911	Sum of GTIs [s]
revision	3	Processing version of data	ontime2	4773.9999907911	Sum of GTIs [s]
			ontime3	4773.9999907911	Sum of GTIs [s]
			ontime6	4773.9999907911	Sum of GTIs [s]
			l1events	118580	Number of level 1 events

2.1.4 Events

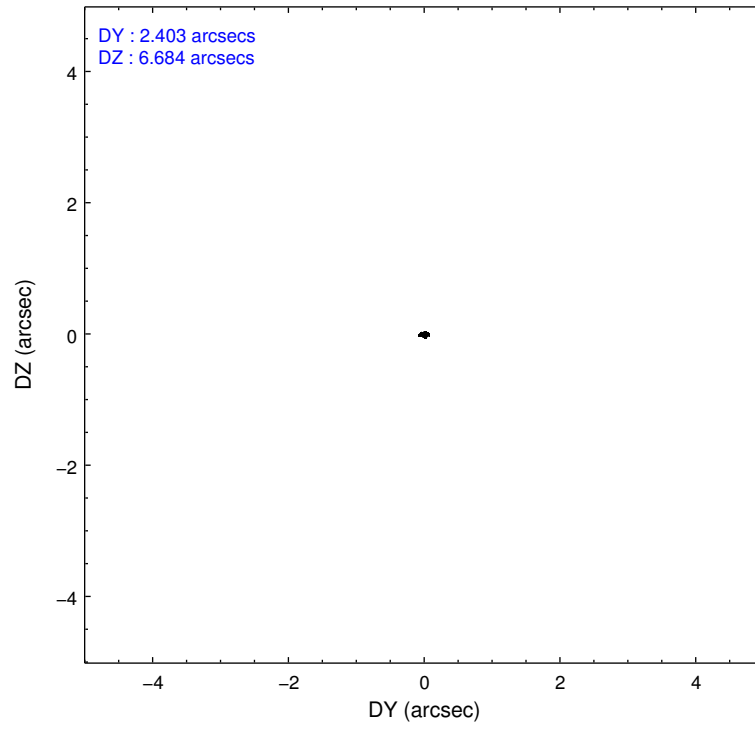
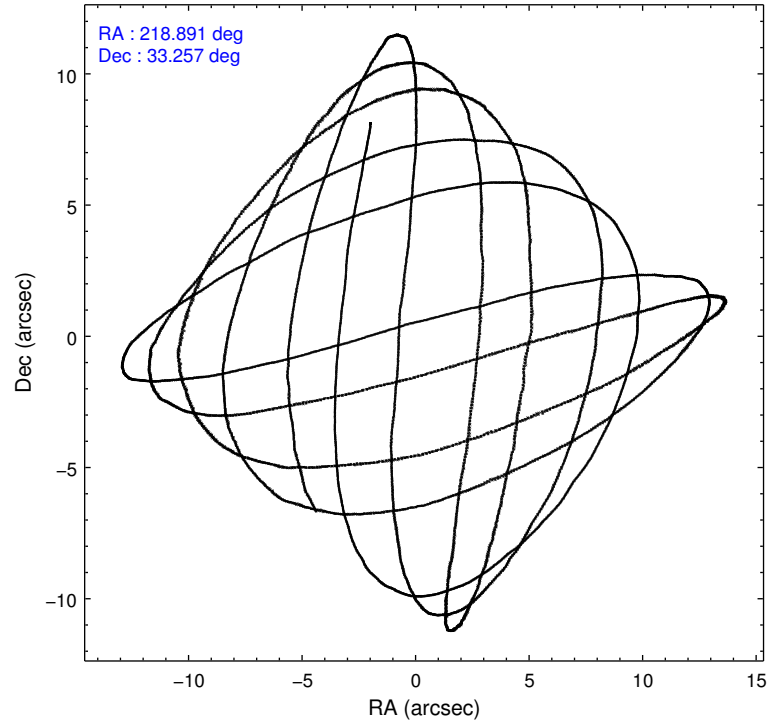
	ccd 0	ccd 1	ccd 2	ccd 3	ccd 6
level 1 events	21605	22755	26298	24755	23167
rejected events	19278	20236	23968	22379	20812
rejected %	89%	88%	91%	90%	89%

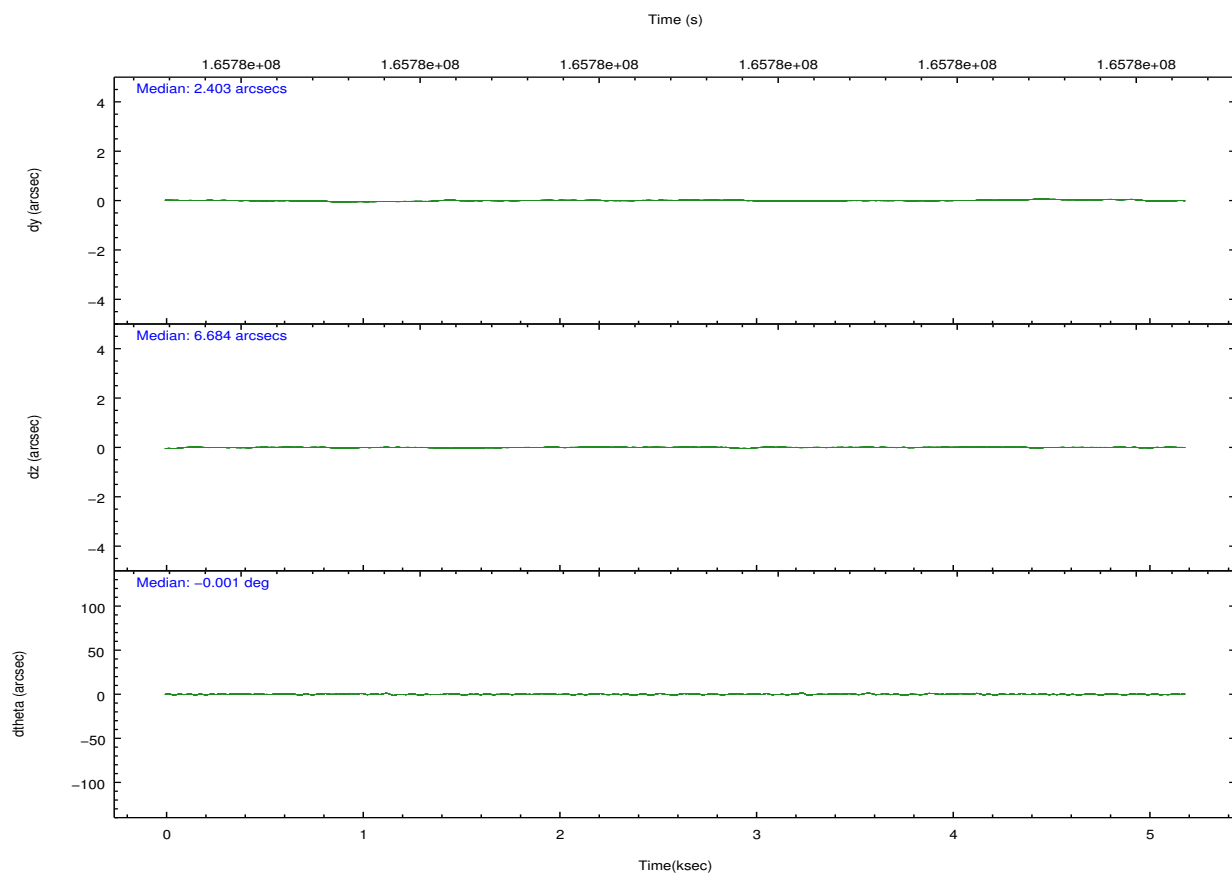
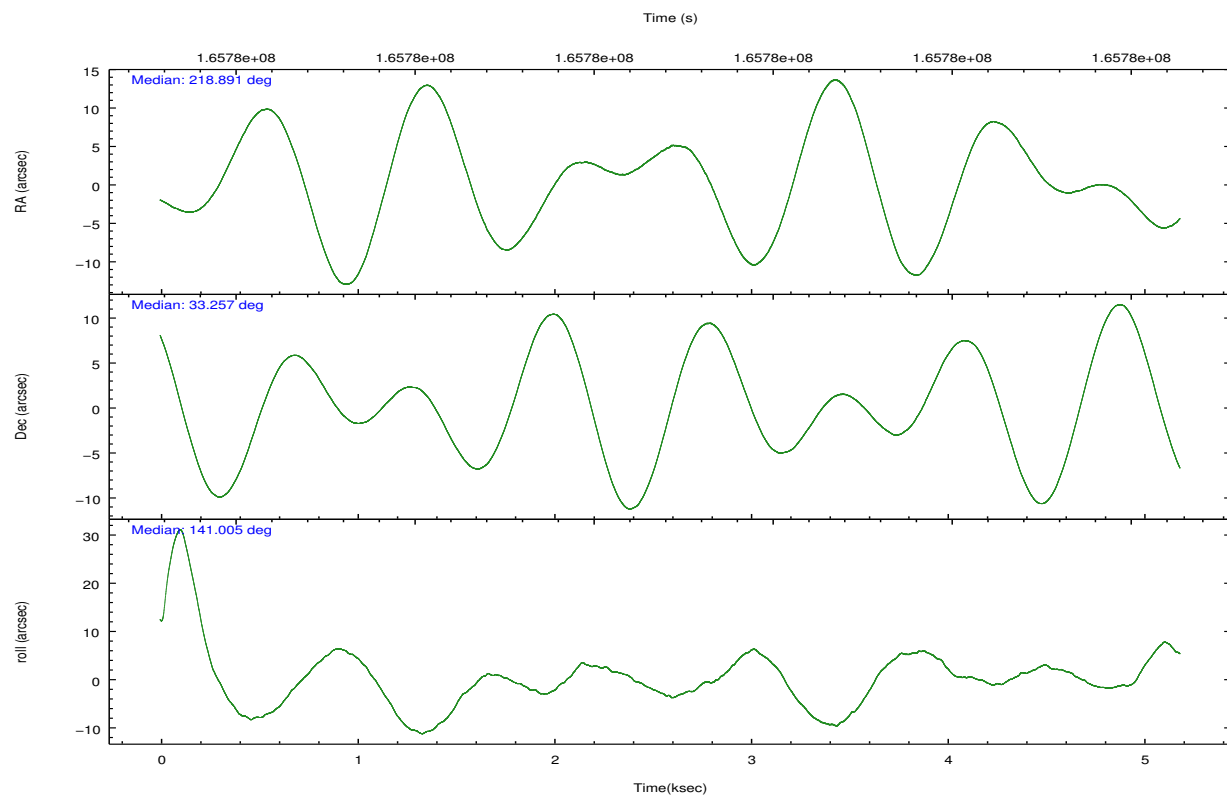
	ccd 0	ccd 1	ccd 2	ccd 3	ccd 6
grade 0 events	822	859	847	907	868
	3%	3%	3%	3%	3%
grade 1 events	19	11	17	17	14
	0%	0%	0%	0%	0%
grade 2 events	521	537	536	473	518
	2%	2%	2%	1%	2%
grade 3 events	296	318	287	290	259
	1%	1%	1%	1%	1%
grade 4 events	238	317	268	277	254
	1%	1%	1%	1%	1%
grade 5 events	690	760	662	790	745
	3%	3%	2%	3%	3%
grade 6 events	452	490	393	435	456
	2%	2%	1%	1%	1%
grade 7 events	18567	19463	23288	21566	20053
	85%	85%	88%	87%	86%

2.2 Compared Parameters

Parameter	Planned	Actual	Parameter	Planned	Actual
Instrument	ACIS	ACIS	Obspar format version number	7	7
Detector	ACIS-01236	ACIS-01236	Obspar file type	PREDICTED	ACTUAL
Grating	NONE	NONE	Obspar update status	NONE	UPDATED
Data mode	VFAINT	VFAINT	Number of optional ACIS chips dropped	0	0
Observation mode	POINTING	POINTING	On-chip summing requested	N	N
[deg] Pointing RA	218.923604	218.8911811395059	Subarray requested	NONE	NONE
[deg] Pointing Dec	33.253146	33.25728823776231	Alternating exposures requested	N	N
[deg] Pointing Roll	140.783683	141.010152968234	[s] Primary exposure time	0.000000	3.1
[mm] SIM focus pos	-0.782348	-0.7809083437167272			
[mm] SIM defocus	0	0.001439871863259334			
[mm] SIM translation stage pos	-233.592463	-233.5874344608287			
[mm] SIM translation stage offset	0	-0.005018542100998502			
[s] Observation start time (MET)	165777010.184000	165776586.87872			
Observation start date	2003-04-03T17:09:06	2003-04-03T17:03:06			
[s] Observation end time (MET)	165782010.184000	165782143.91645			
Observation end date	2003-04-03T18:32:26	2003-04-03T18:35:43			
Read mode	TIMED	TIMED			

2.3 Aspect



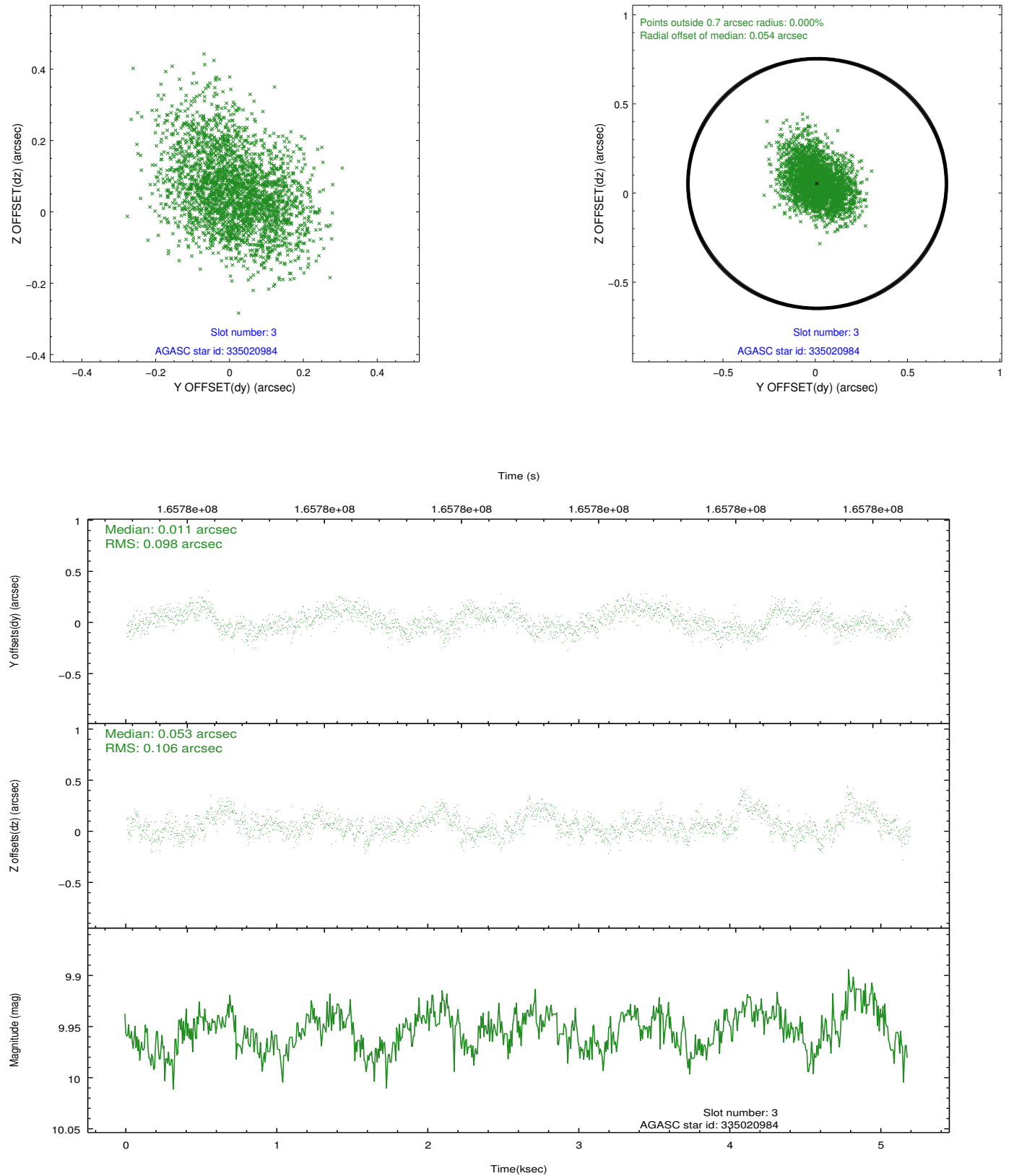


Slot Statistics

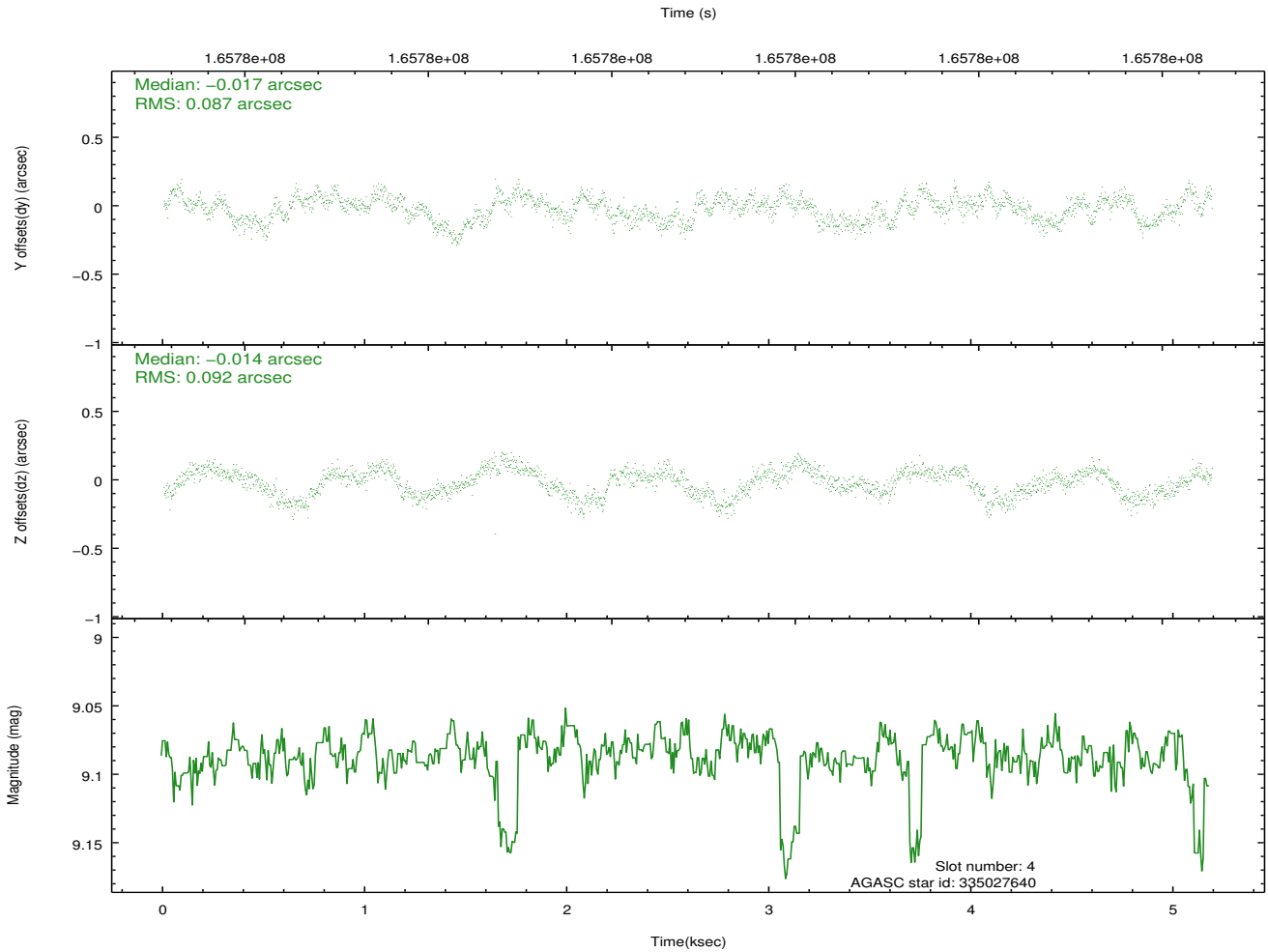
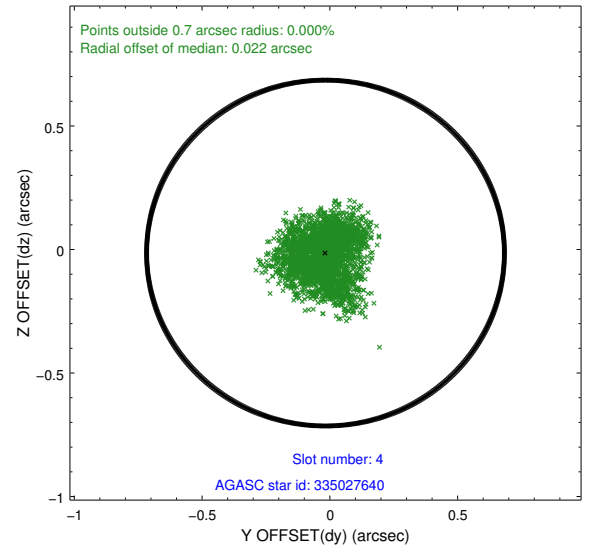
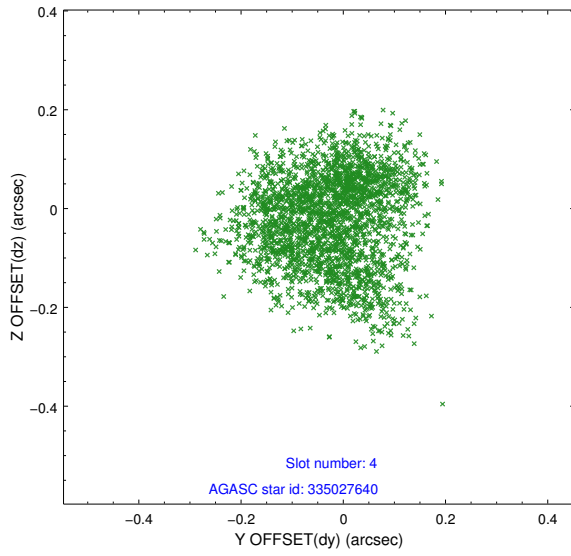
slot	status	id	mag	n_pts	med_dy	med_dz	dr1	dr2	ra	dec	mean_y	mean_z
0	FID	ACIS-I-1	7.25	1265	0.011	-0.005	0.006	0.010	0.000000	0.000000	937.40	-830.09
1	FID	ACIS-I-5	7.24	1265	-0.079	0.051	0.006	0.009	0.000000	0.000000	-1810.11	1066.94
2	FID	ACIS-I-6	7.26	1265	-0.023	0.024	0.006	0.010	0.000000	0.000000	401.70	1712.69
3	GUIDE	335020984	9.95	2515	0.011	0.053	0.153	0.249	218.841668	33.815112	1469.94	-1412.47
4	GUIDE	335027640	9.09	2518	-0.017	-0.014	0.137	0.206	218.092211	33.193770	1812.43	1741.04
5	GUIDE	335152784	7.23	2530	-0.036	-0.025	0.089	0.130	219.280617	33.678221	141.07	-1862.54
6	GUIDE	335154960	9.54	2531	0.146	-0.073	0.169	0.266	219.209961	33.303073	-553.15	-685.86
7	GUIDE	335157088	9.08	2530	-0.093	0.048	0.106	0.169	219.274029	33.726909	266.66	-1986.31

2.4 Star Slots

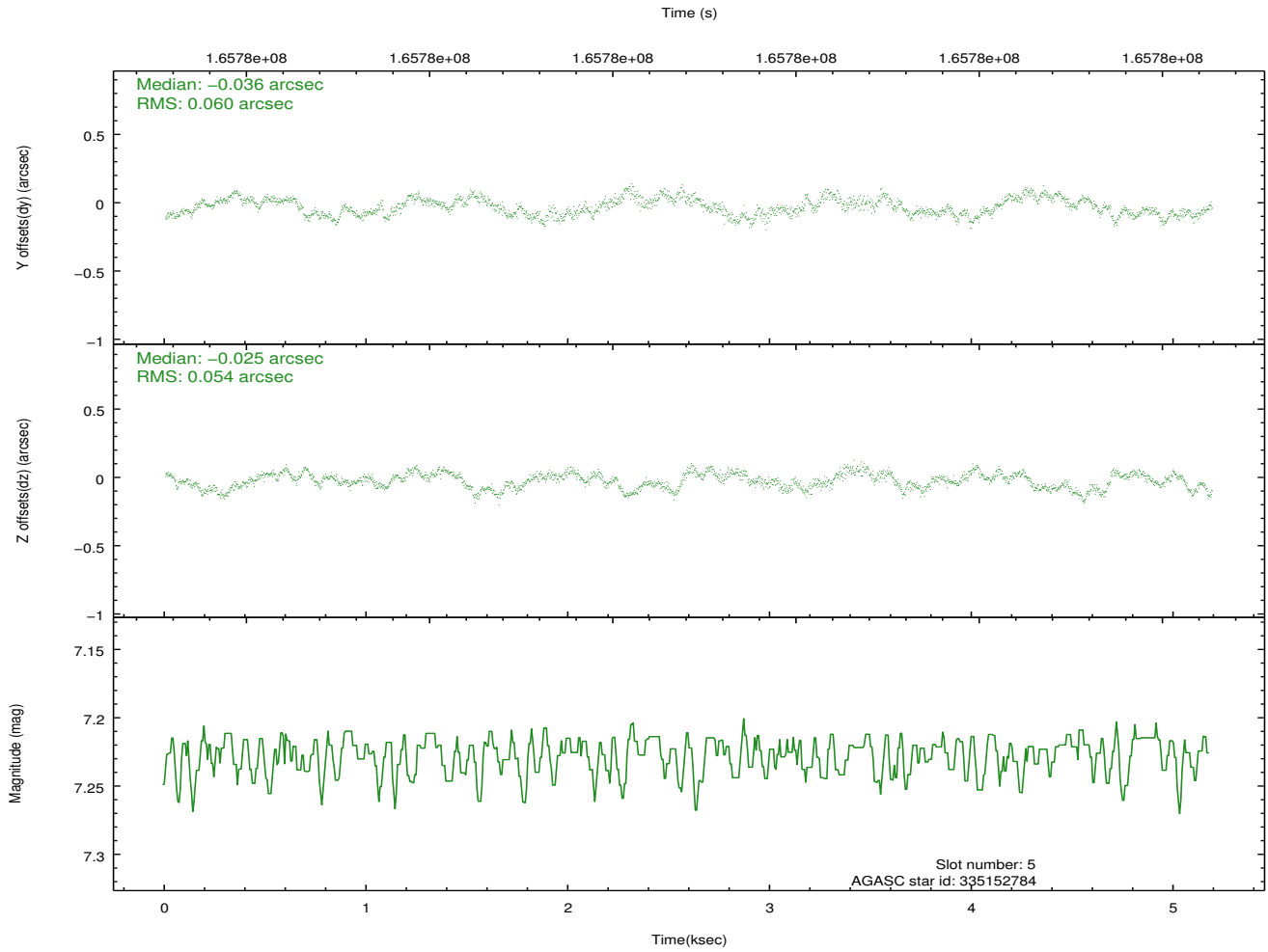
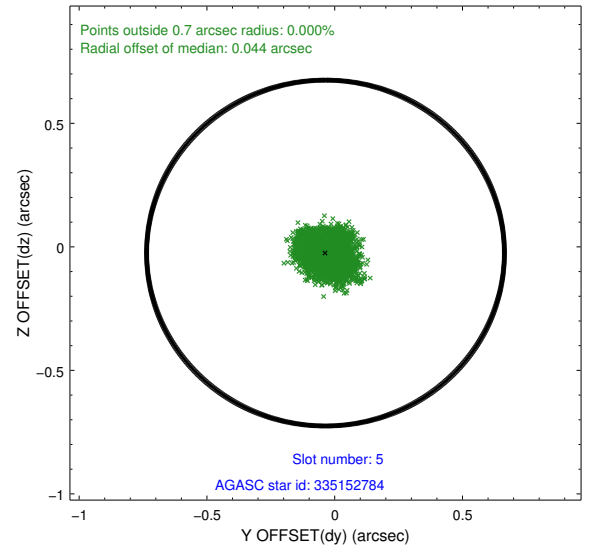
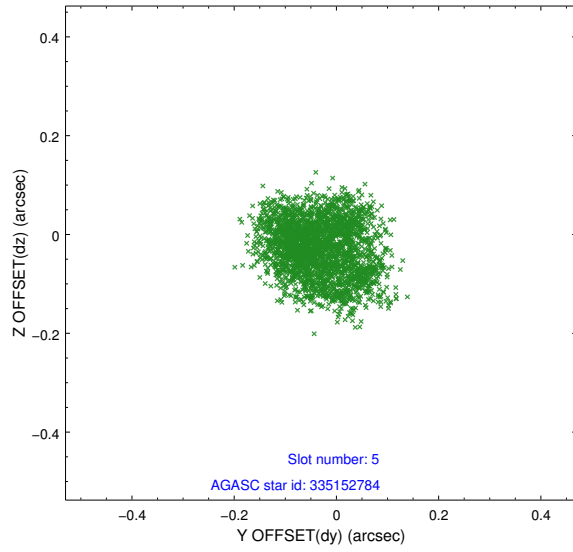
2.4.1 Slot 3



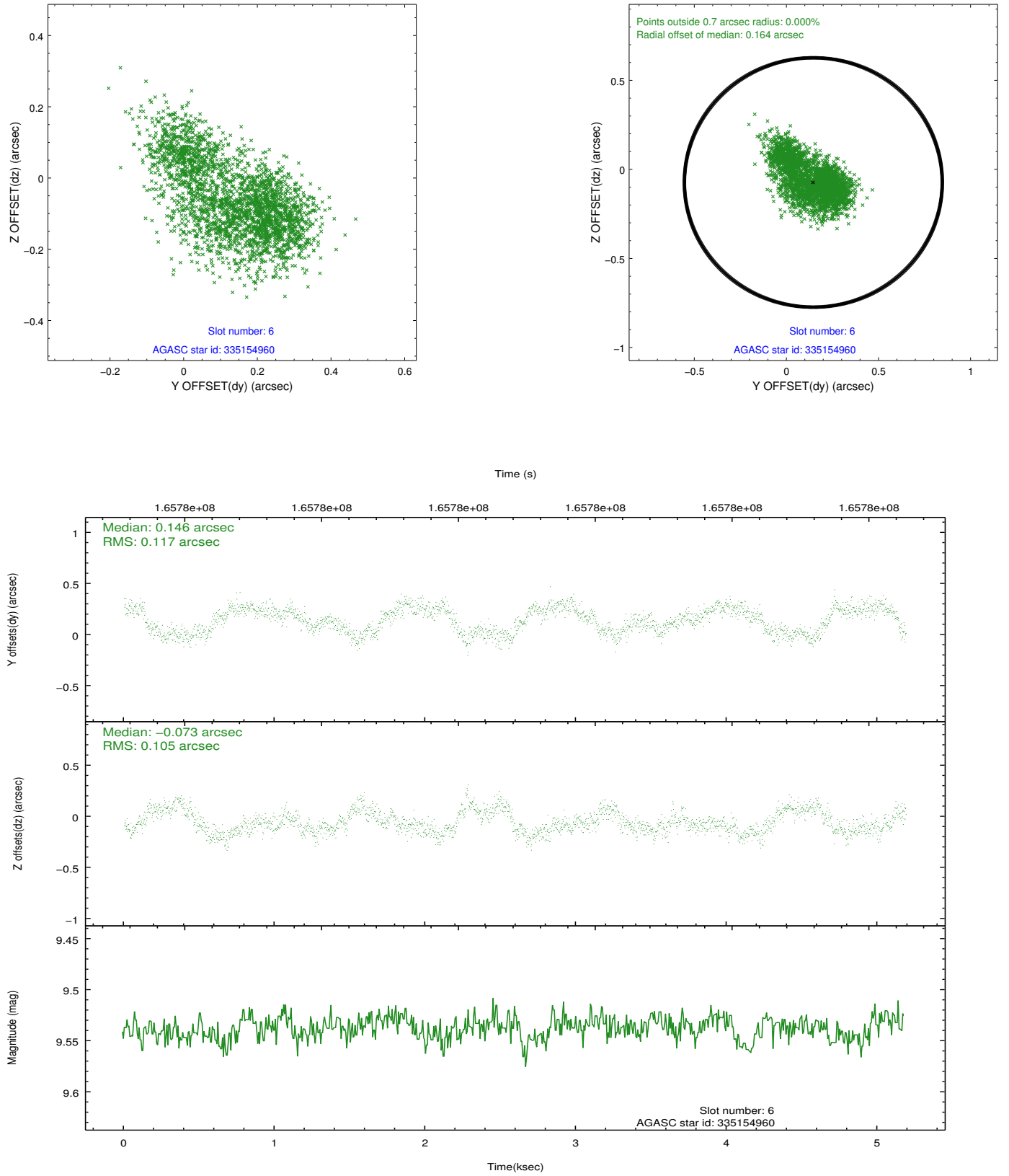
2.4.2 Slot 4



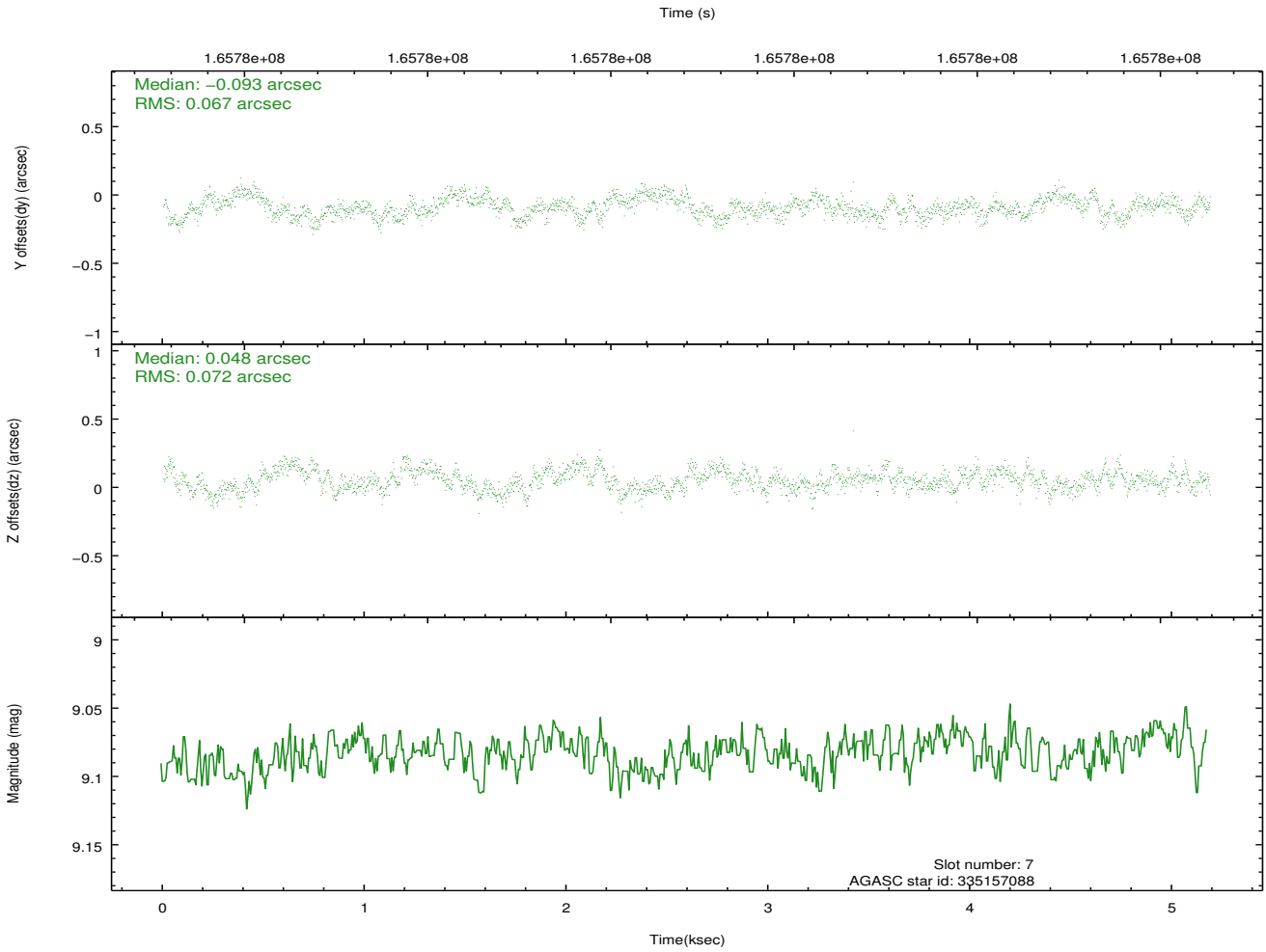
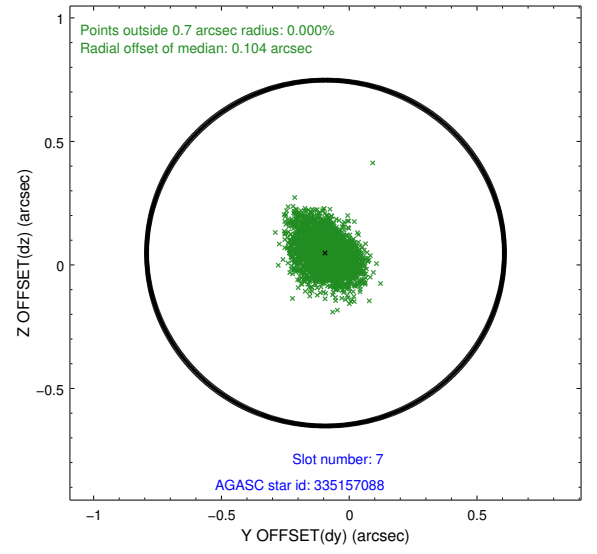
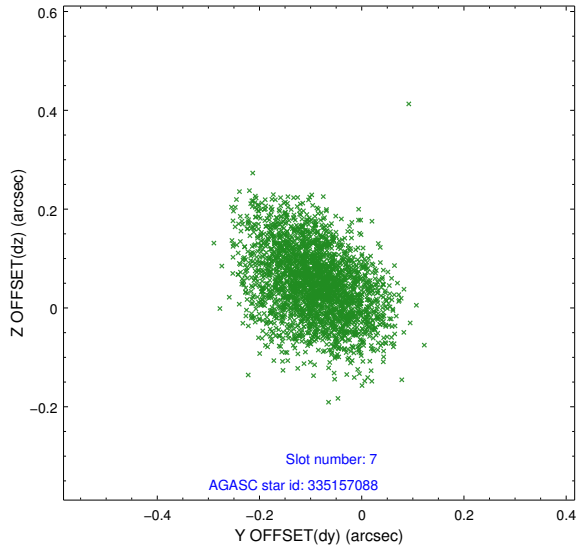
2.4.3 Slot 5



2.4.4 Slot 6

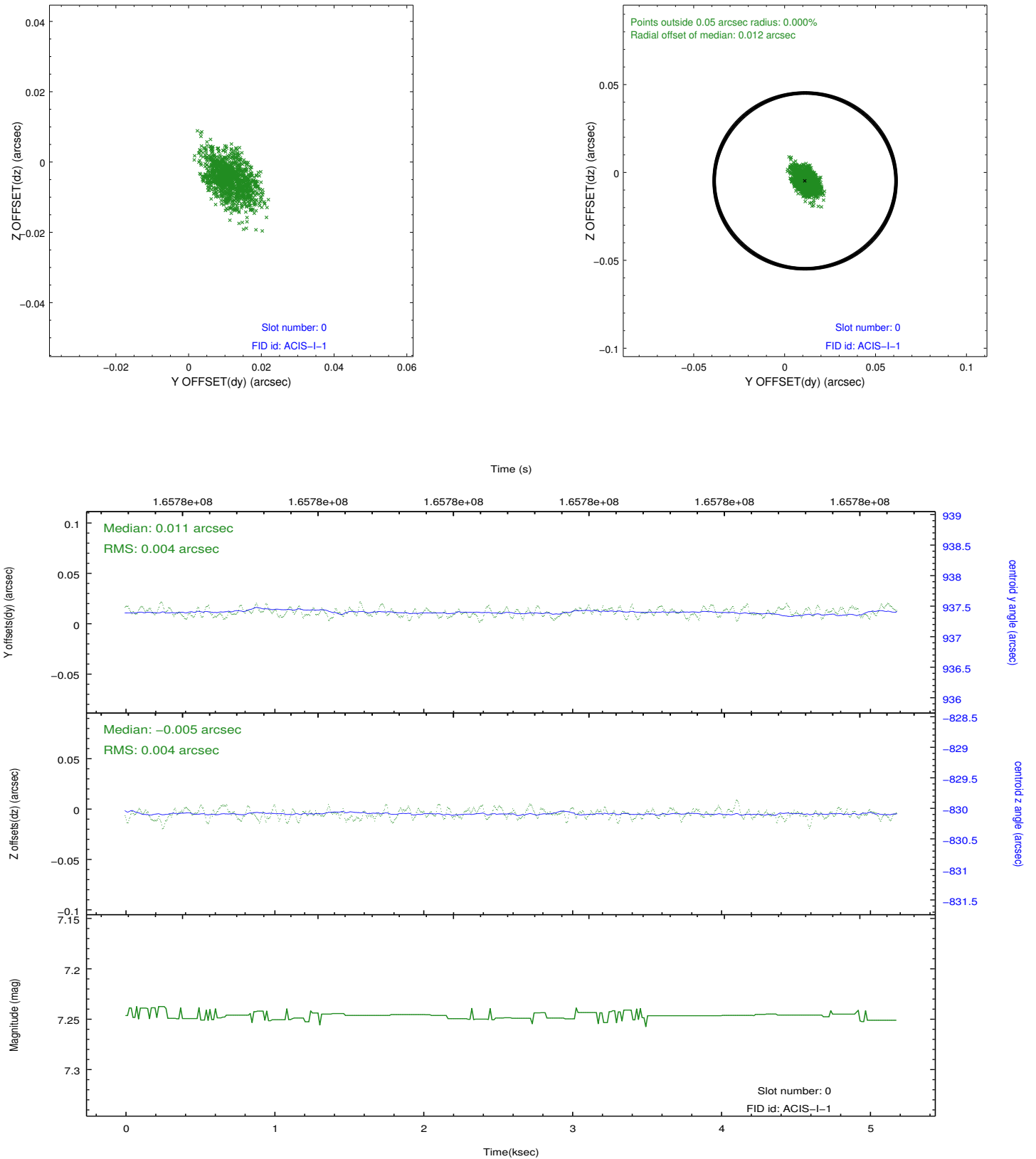


2.4.5 Slot 7

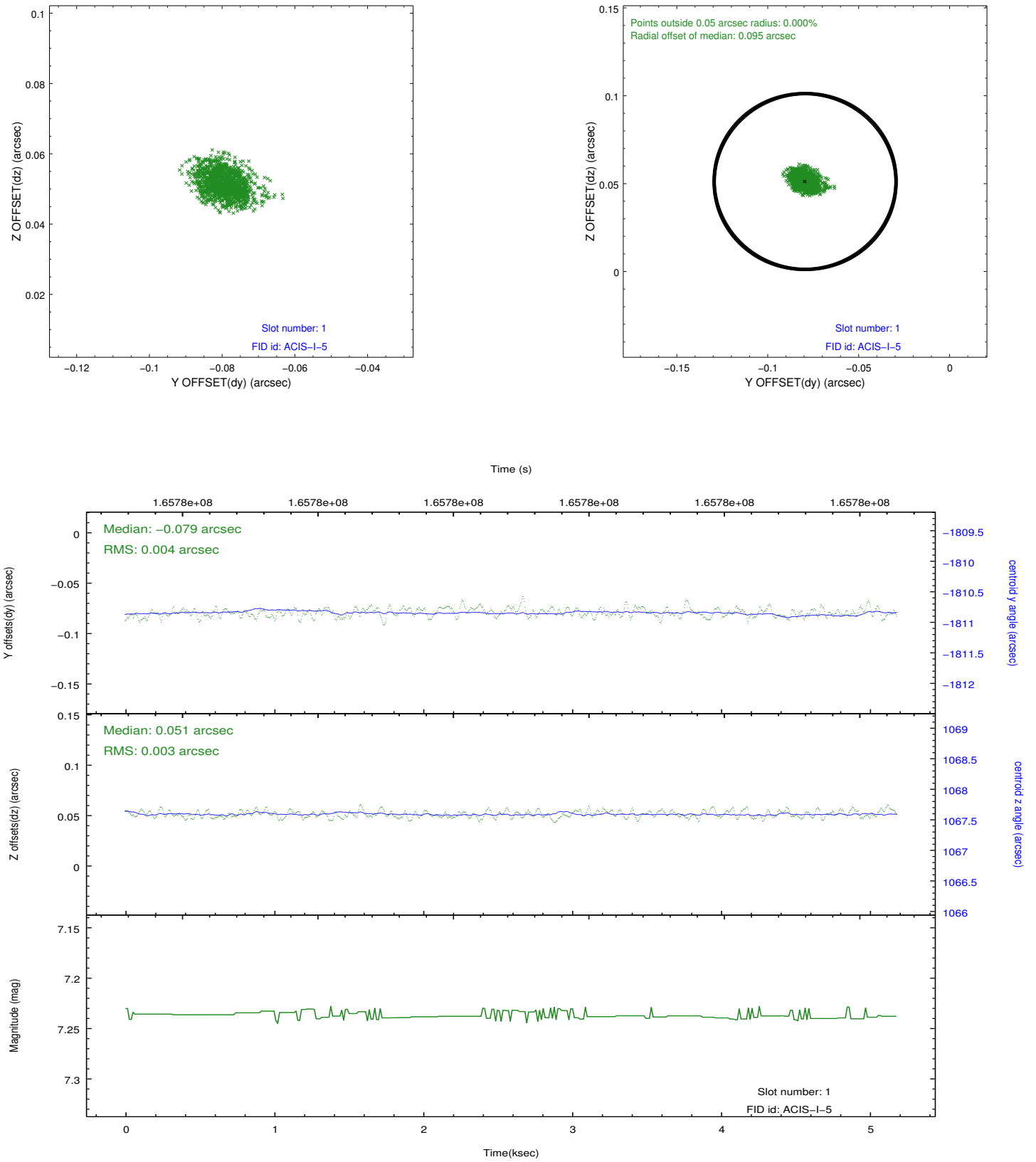


2.5 FID Slots

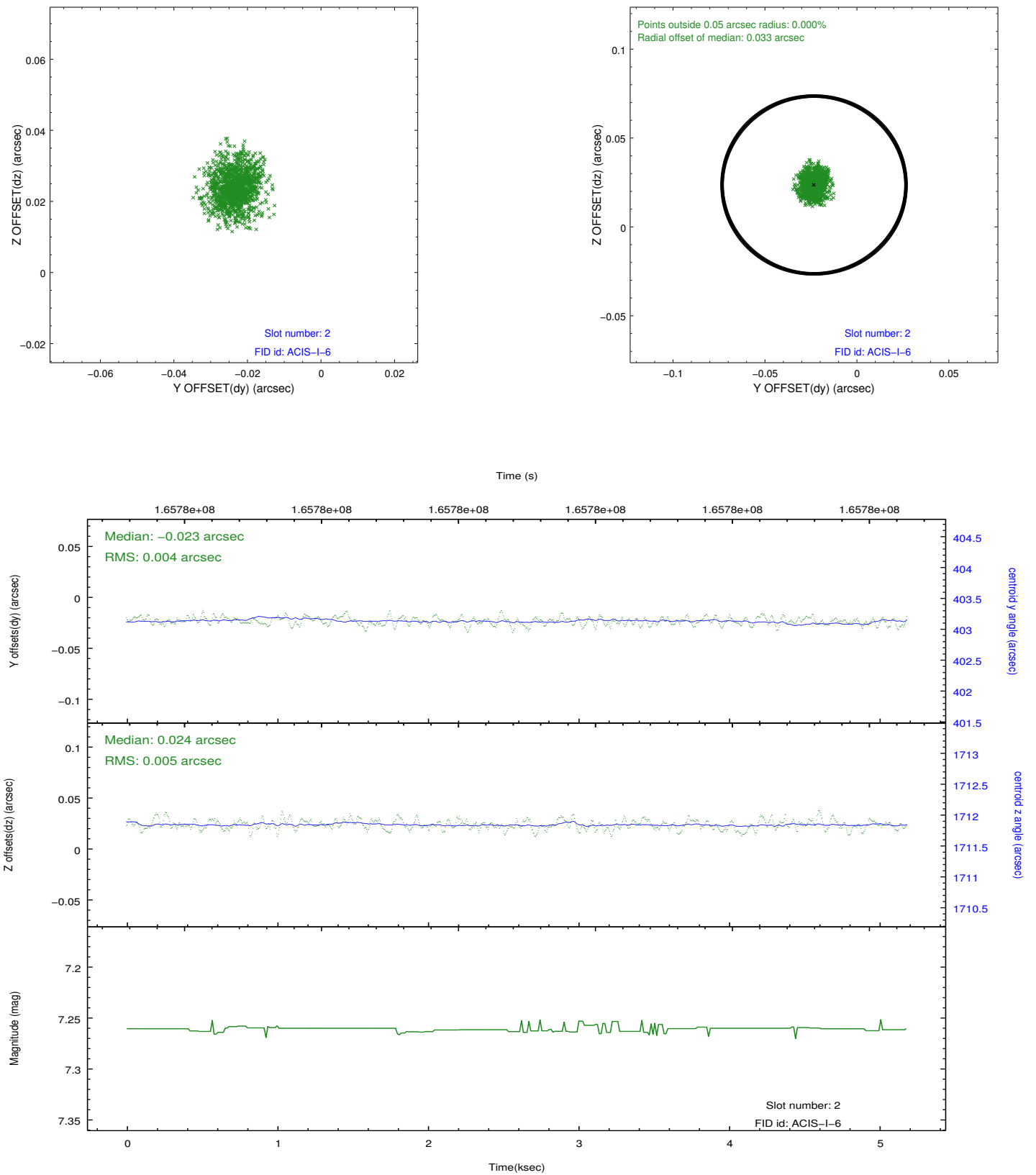
2.5.1 Slot 0



2.5.2 Slot 1



2.5.3 Slot 2



A Summary

A.1 Status

V&V Scientist	Jen Lauer
V&V Date (YYYY-MM-DD)	2012.11.13
V&V Edition	1
V&V Disposition and Status	OK
V&V Charge Time	4.777

A.2 Comments