

# V&V Reference Report

## L2 ASCDS Version : 8.4.5

Observation 4239 - L2 Version 3  
Chandra X-Ray Center

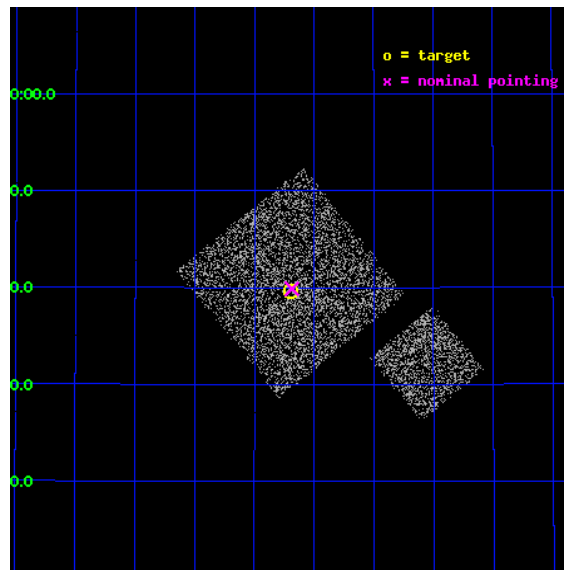
L2 Processing Date : Oct 26 2012

## Contents

<b>1</b>	<b>Front</b>	<b>2</b>
<b>2</b>	<b>OBI</b>	<b>3</b>
2.1	OBI . . . . .	3
2.1.1	Images . . . . .	3
2.1.2	Bias . . . . .	3
2.1.3	Parameters . . . . .	4
2.1.4	Events . . . . .	4
2.2	Compared Parameters . . . . .	5
2.3	Aspect . . . . .	6
2.4	Star Slots . . . . .	9
2.4.1	Slot 3 . . . . .	9
2.4.2	Slot 4 . . . . .	10
2.4.3	Slot 5 . . . . .	11
2.4.4	Slot 6 . . . . .	12
2.4.5	Slot 7 . . . . .	13
2.5	FID Slots . . . . .	14
2.5.1	Slot 0 . . . . .	14
2.5.2	Slot 1 . . . . .	15
2.5.3	Slot 2 . . . . .	16
<b>A</b>	<b>Summary</b>	<b>17</b>
A.1	Status . . . . .	17
A.2	Comments . . . . .	17

# 1 Front

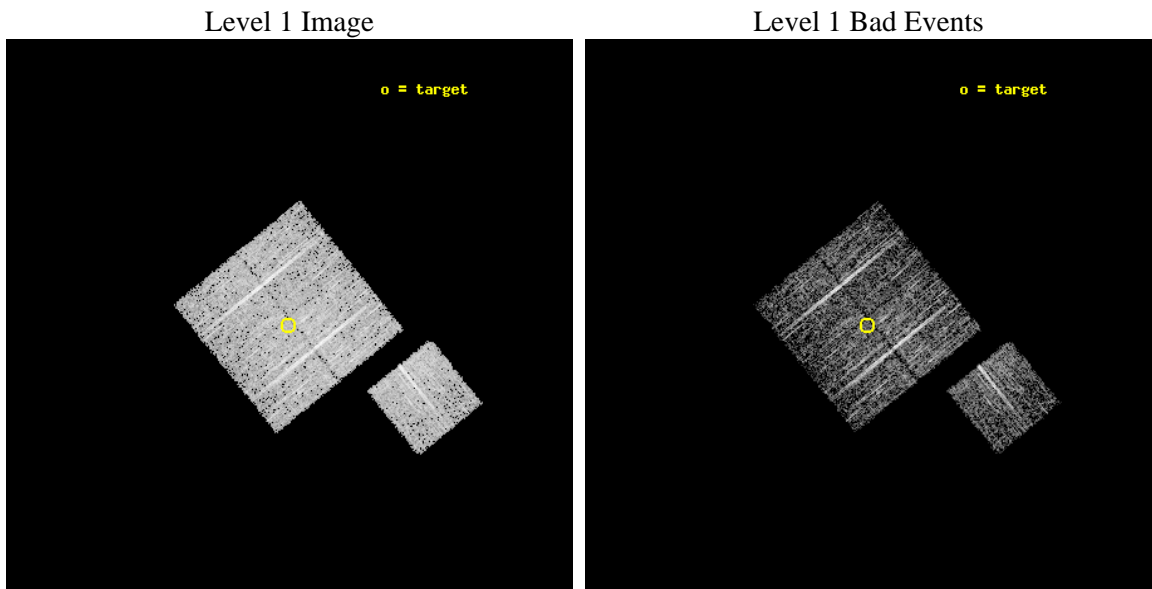
seq_num	900282	Sequence number
obs_id	4239	Observation id
title	A CHANDRA WIDE-FIELD SURVEY TO MAP THE COSMIC WEB AND INVESTIGATE THE EVOLUTION OF NUCLEAR ACCRETION	Proposal title
observer	Dr. Christine Jones	Principal investigator
object	SD38	Source name
dtcycle	0	&#160
cycle	P	events from which exps? Prim/Second/Both
ra_targ	217.17418	Observer's specified target RA [deg]
dec_targ	33.660612	Observer's specified target Dec [deg]
ra_nom	217.17153339668	Nominal RA [deg]
dec_nom	33.664658680702	Nominal Dec [deg]
roll_nom	141.01016273947	Nominal Roll [deg]
revision	3	Processing version of data
ontime	4575.226611048	Sum of GTIs [s]
livetime	4515.4479071418	Livetime [s]
ontime0	4575.1034910381	Sum of GTIs [s]
ontime1	4575.1445310414	Sum of GTIs [s]
ontime2	4575.1855710447	Sum of GTIs [s]
ontime3	4575.226611048	Sum of GTIs [s]
ontime6	4575.0624510348	Sum of GTIs [s]
l2events	9170	Number of level 2 events



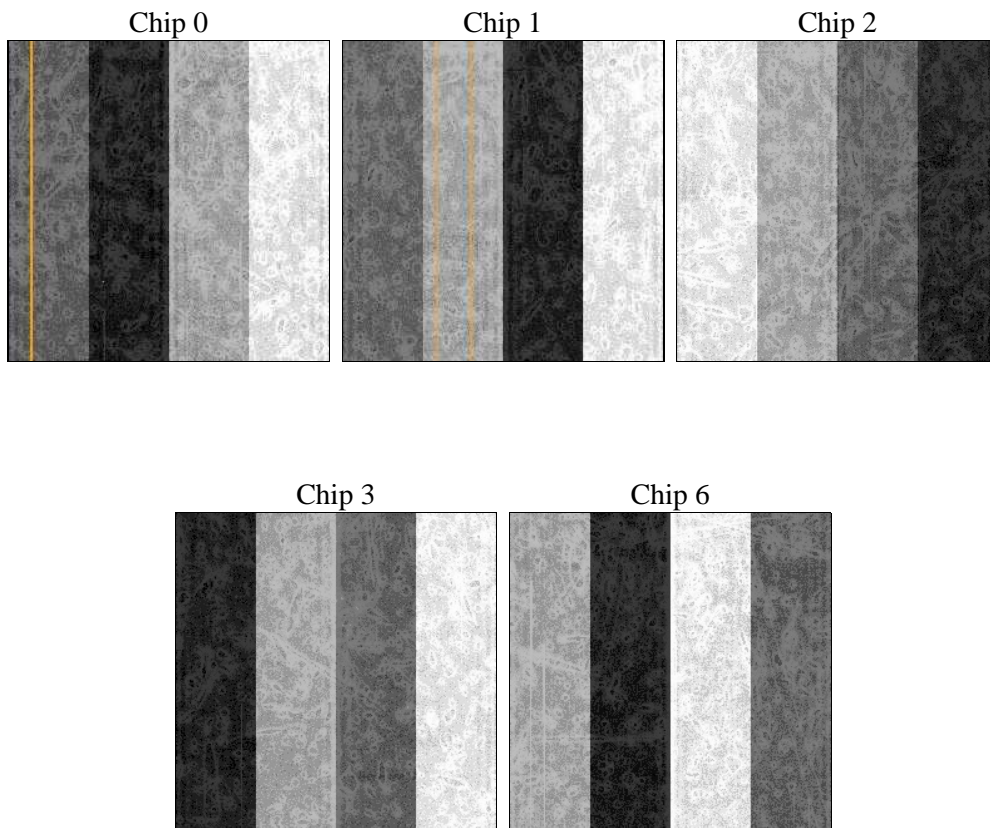
## 2 OBI

### 2.1 OBI

#### 2.1.1 Images



#### 2.1.2 Bias



### 2.1.3 Parameters

obi_num	1	Obi number	sched_exp_time	4800.000000	[s] Scheduled observation exposure time
ascdsver	8.4.5	Processing system revision	ontime	4575.226611048	Sum of GTIs [s]
caldsver	4.5.2	&#160	ontime0	4575.1034910381	Sum of GTIs [s]
date	2012-10-26T00:16:21	Date and time of file creation	ontime1	4575.1445310414	Sum of GTIs [s]
revision	3	Processing version of data	ontime2	4575.1855710447	Sum of GTIs [s]
			ontime3	4575.226611048	Sum of GTIs [s]
			ontime6	4575.0624510348	Sum of GTIs [s]
			l1events	115014	Number of level 1 events

### 2.1.4 Events

	ccd 0	ccd 1	ccd 2	ccd 3	ccd 6
level 1 events	21293	21478	26433	22900	22910
rejected events	19113	19238	24137	20726	20597
rejected %	89%	89%	91%	90%	89%

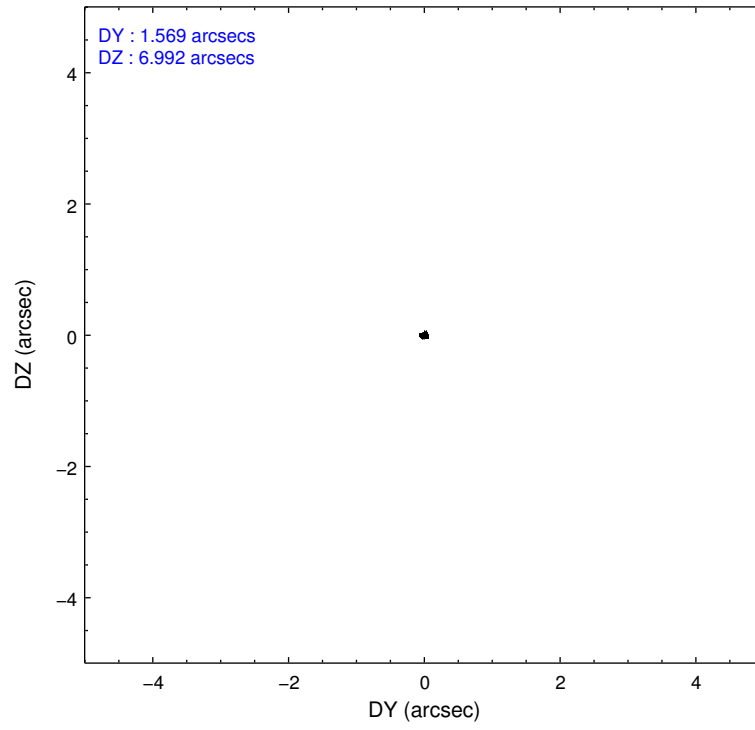
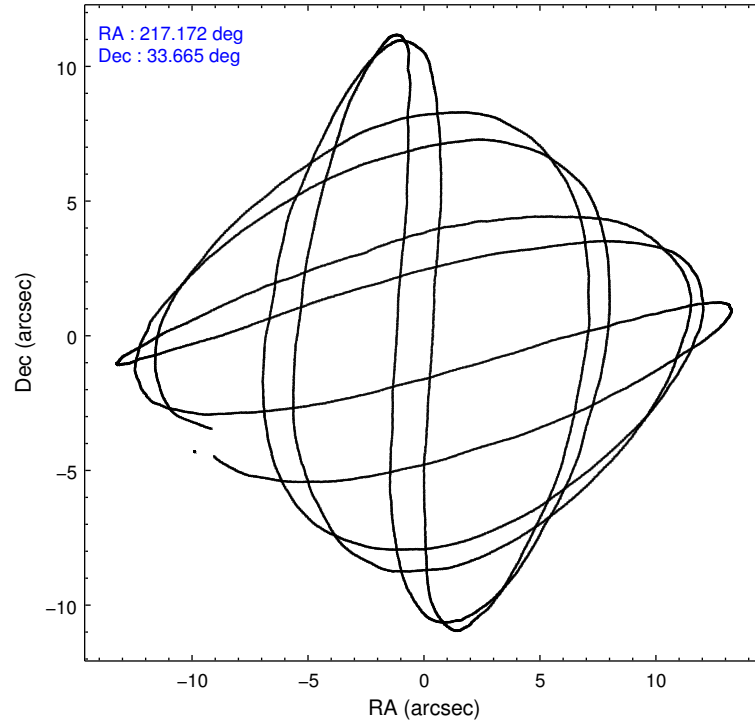
	ccd 0	ccd 1	ccd 2	ccd 3	ccd 6
grade 0 events	811	763	851	863	819
	3%	3%	3%	3%	3%
grade 1 events	14	19	6	16	11
	0%	0%	0%	0%	0%
grade 2 events	455	482	552	408	518
	2%	2%	2%	1%	2%
grade 3 events	256	301	227	259	268
	1%	1%	0%	1%	1%
grade 4 events	265	280	264	210	268
	1%	1%	0%	0%	1%
grade 5 events	630	717	649	711	738
	2%	3%	2%	3%	3%
grade 6 events	396	415	403	435	442
	1%	1%	1%	1%	1%
grade 7 events	18466	18501	23481	19998	19846
	86%	86%	88%	87%	86%

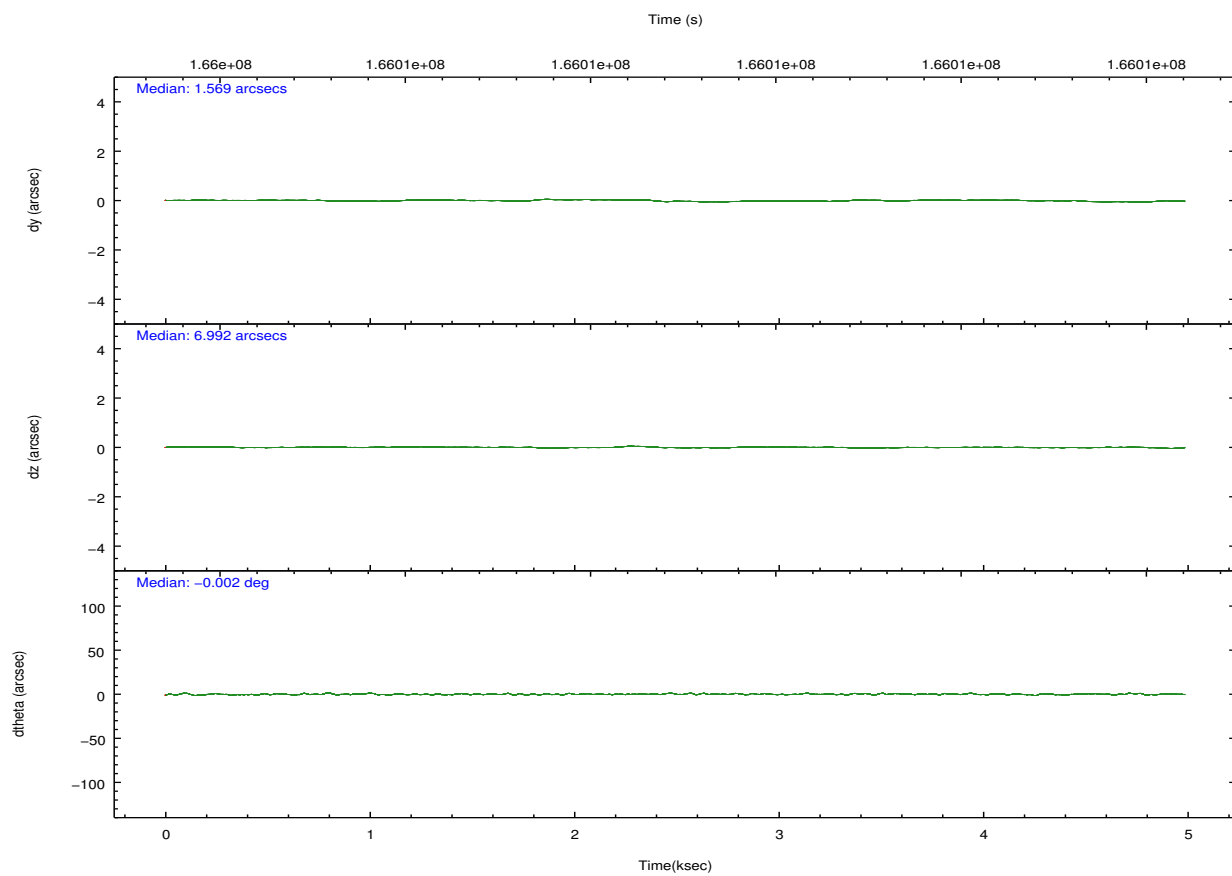
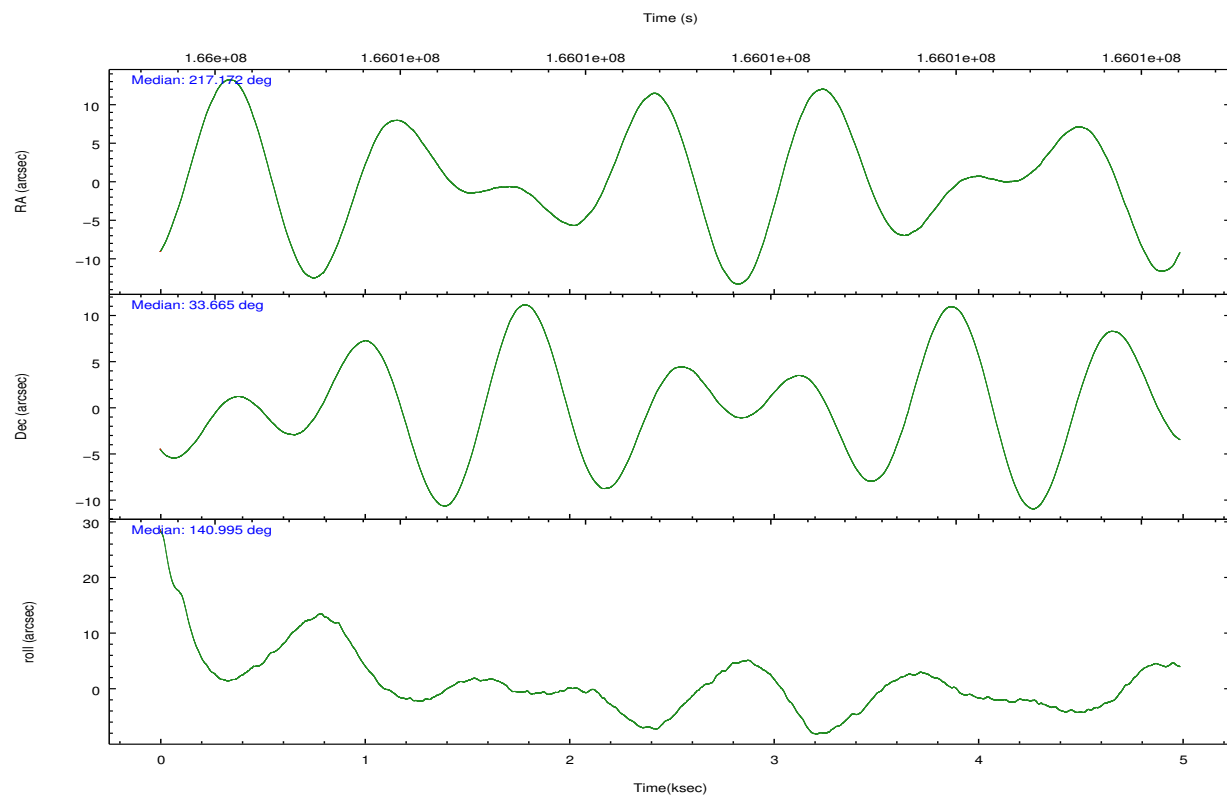


## 2.2 Compared Parameters

Parameter	Planned	Actual	Parameter	Planned	Actual
Instrument	ACIS	ACIS	Obspar format version number	7	7
Detector	ACIS-01236	ACIS-01236	Obspar file type	PREDICTED	ACTUAL
Grating	NONE	NONE	Obspar update status	NONE	UPDATED
Data mode	VFAINT	VFAINT	Number of optional ACIS chips dropped	0	0
Observation mode	POINTING	POINTING	On-chip summing requested	N	N
[deg] Pointing RA	217.204076	217.1715333966823	Subarray requested	NONE	NONE
[deg] Pointing Dec	33.660530	33.66465868070158	Alternating exposures requested	N	N
[deg] Pointing Roll	140.783429	141.0101627394722	[s] Primary exposure time	0.000000	3.1
[mm] SIM focus pos	-0.782348	-0.7809083437167272			
[mm] SIM defocus	0	0.001439871863259334			
[mm] SIM translation stage pos	-233.592463	-233.5874344608287			
[mm] SIM translation stage offset	0	-0.005018542100998502			
[s] Observation start time (MET)	166005145.184000	166004769.31335			
Observation start date	2003-04-06T08:31:21	2003-04-06T08:26:09			
[s] Observation end time (MET)	166009945.184000	166010079.32608			
Observation end date	2003-04-06T09:51:21	2003-04-06T09:54:39			
Read mode	TIMED	TIMED			

## 2.3 Aspect



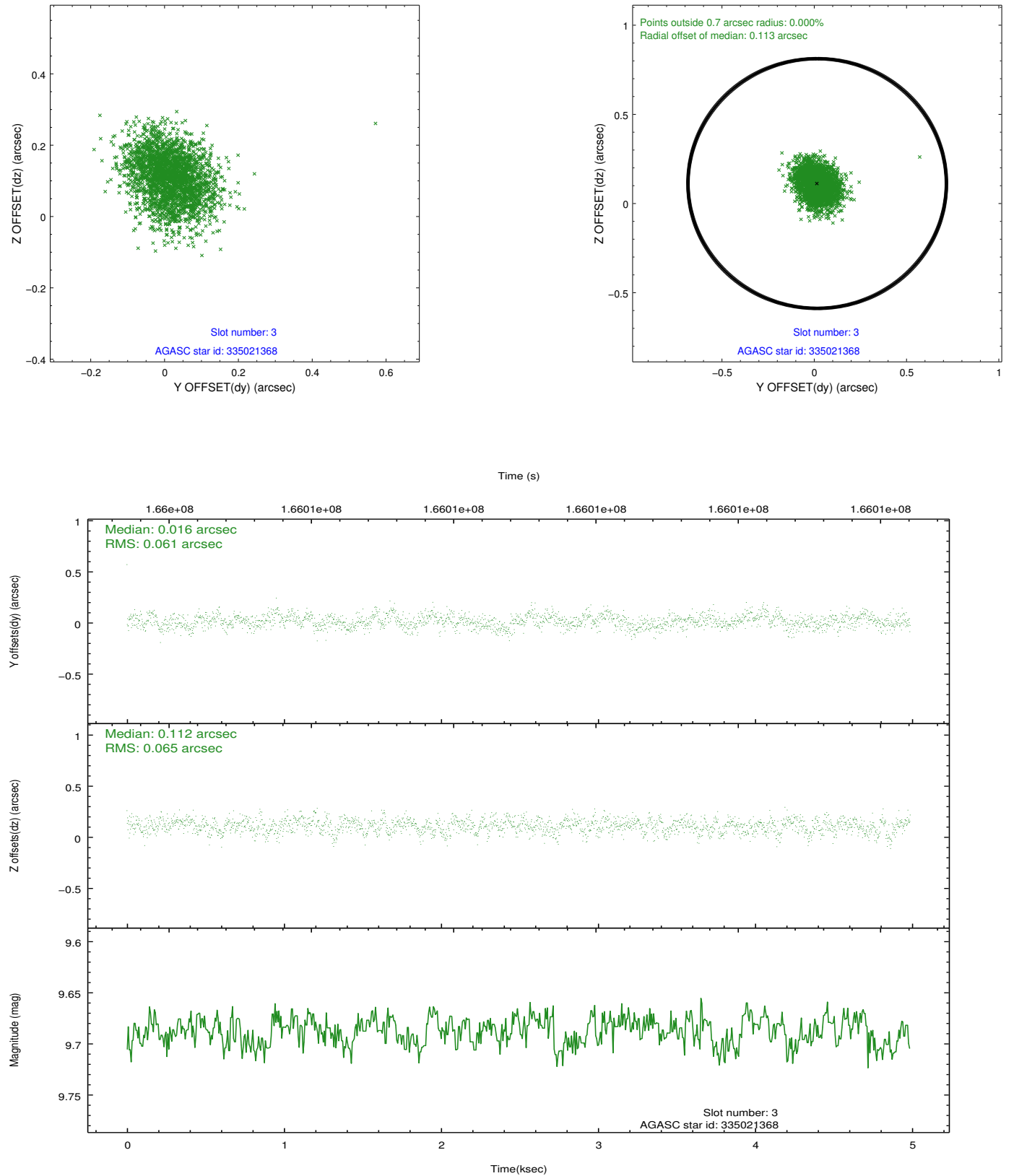


### Slot Statistics

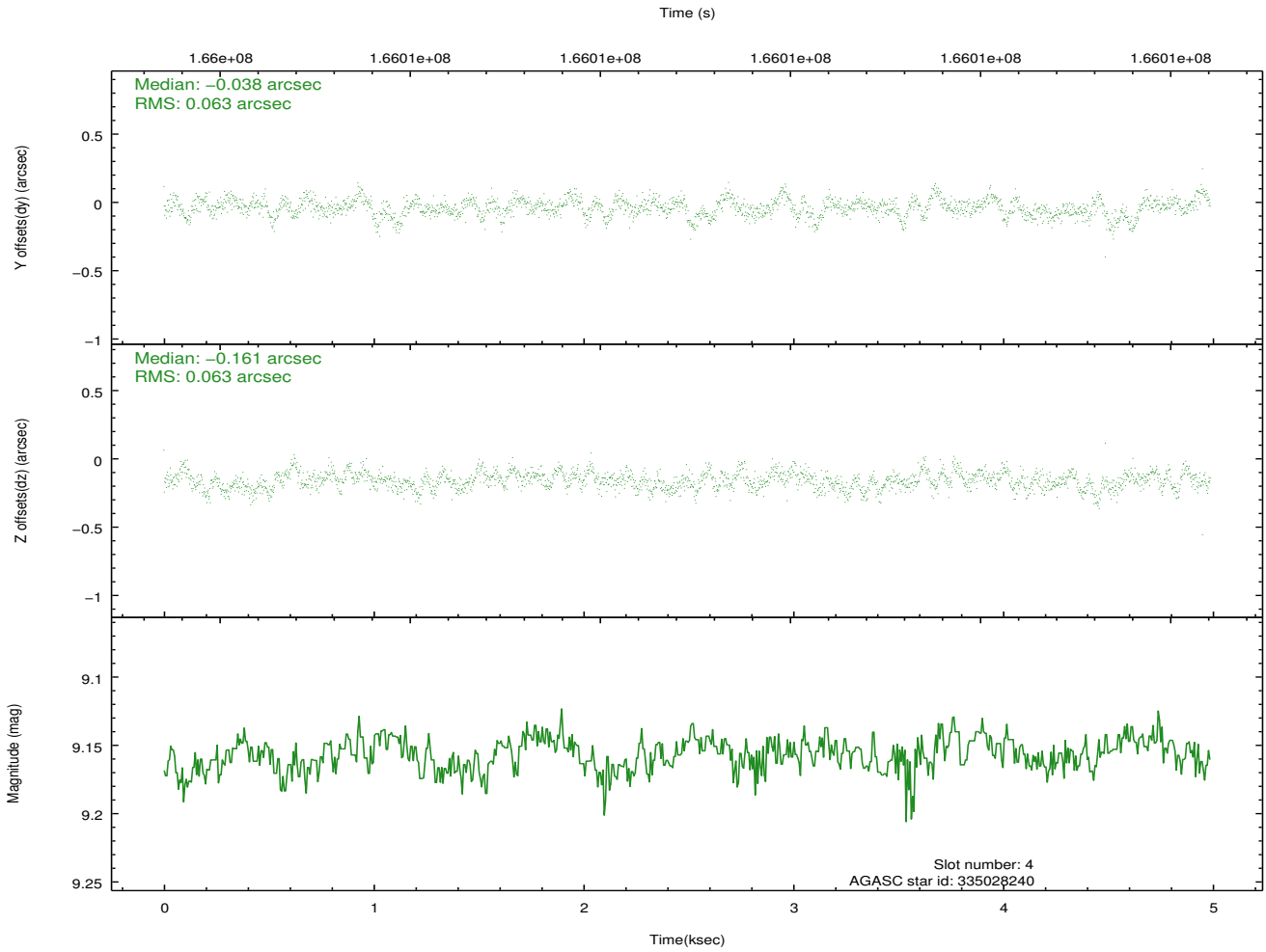
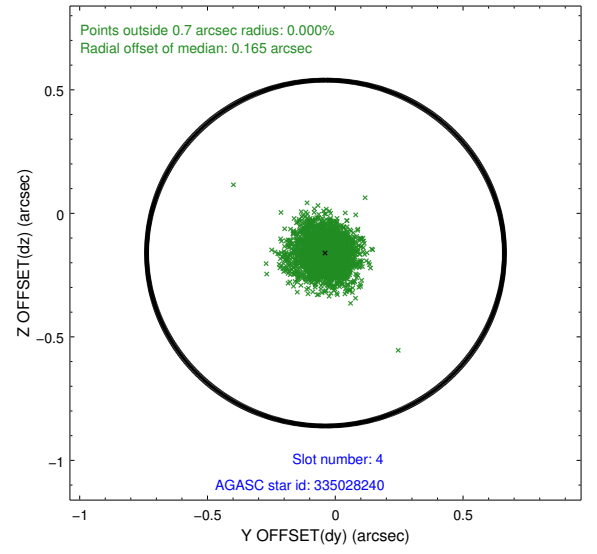
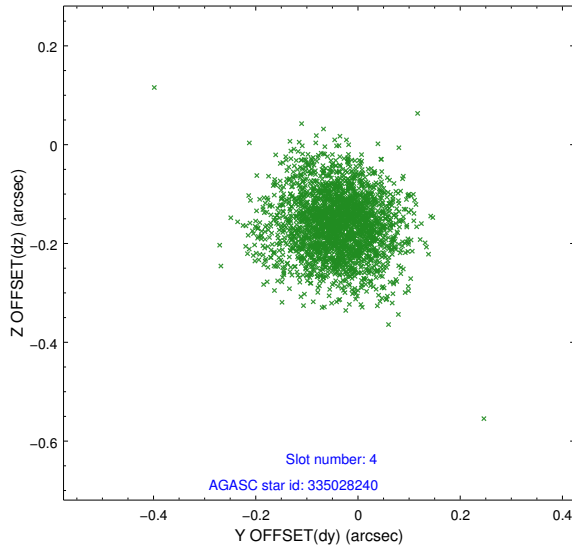
slot	status	id	mag	n_pts	med_dy	med_dz	dr1	dr2	ra	dec	mean_y	mean_z
0	FID	ACIS-I-1	7.25	1216	-0.036	-0.056	0.008	0.014	0.000000	0.000000	938.23	-830.44
1	FID	ACIS-I-4	7.18	1217	0.021	0.079	0.007	0.012	0.000000	0.000000	2159.02	1068.88
2	FID	ACIS-I-5	7.23	1217	-0.083	0.047	0.006	0.012	0.000000	0.000000	-1808.24	1068.11
3	GUIDE	335021368	9.69	2434	0.016	0.112	0.095	0.152	217.529643	33.934817	-127.44	-1380.82
4	GUIDE	335028240	9.16	2433	-0.038	-0.161	0.093	0.155	216.746851	33.385009	439.64	1634.65
5	GUIDE	335028696	9.16	2433	0.025	0.138	0.082	0.132	217.260519	33.844112	287.79	-617.76
6	GUIDE	335029368	10.15	2426	0.028	0.072	0.143	0.240	217.181018	33.065030	-1301.56	1704.53
7	GUIDE	335029808	9.08	2433	-0.034	-0.158	0.092	0.144	216.789548	33.180488	-124.15	2127.30

## 2.4 Star Slots

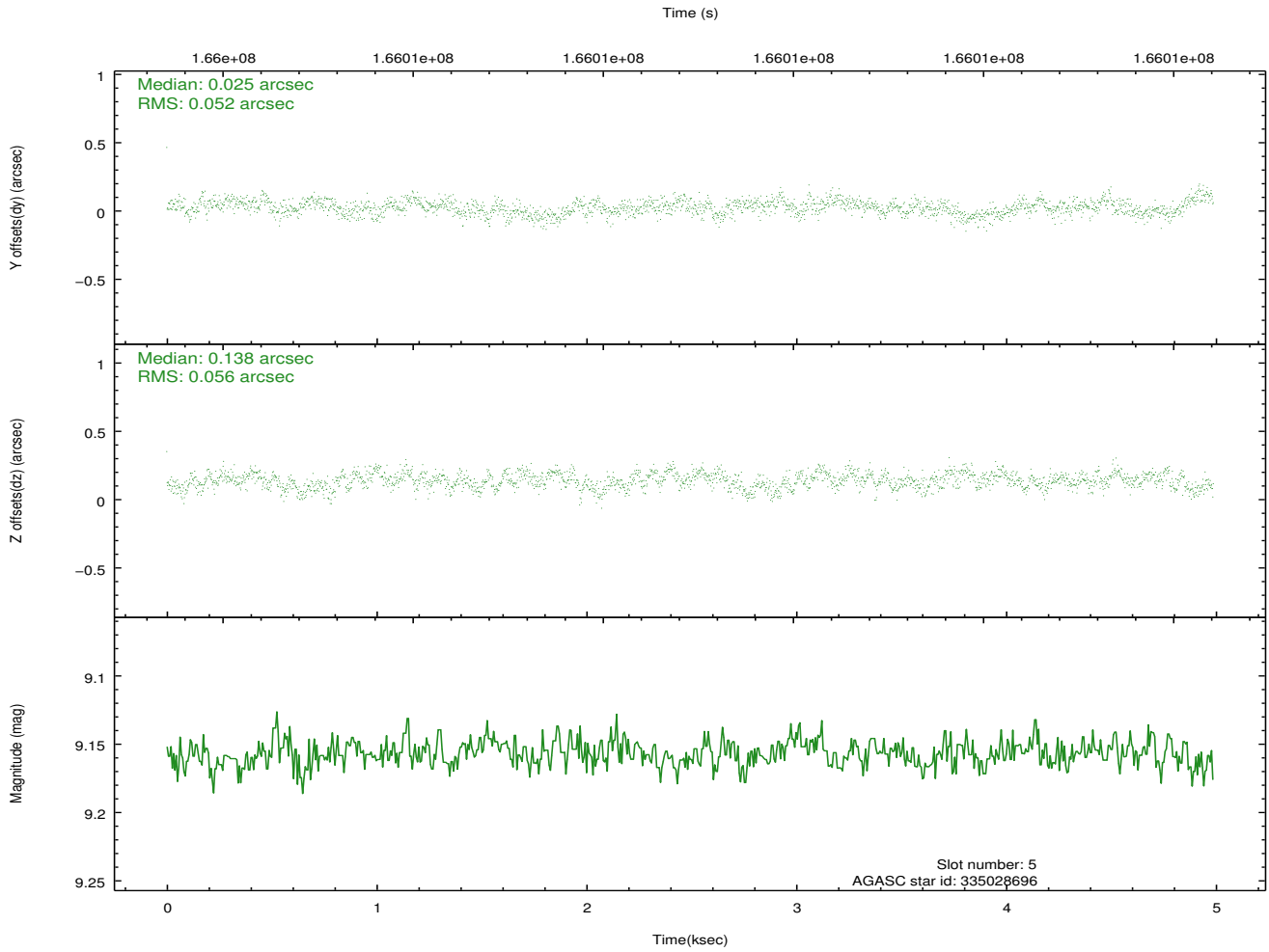
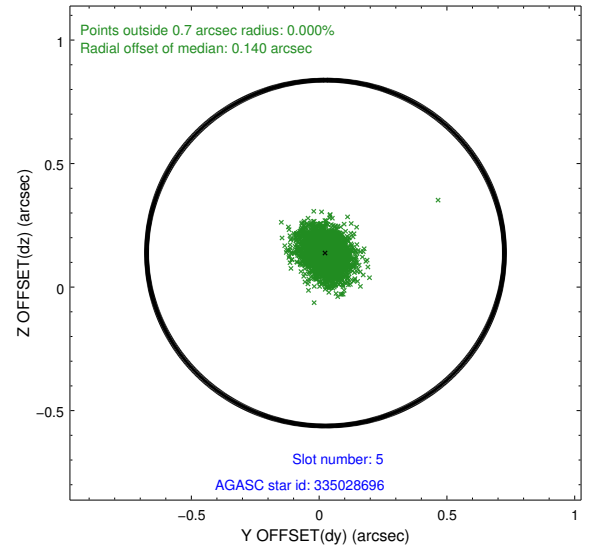
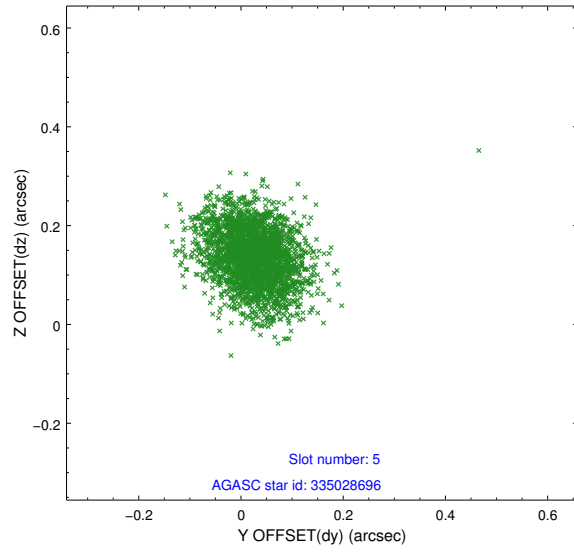
### 2.4.1 Slot 3



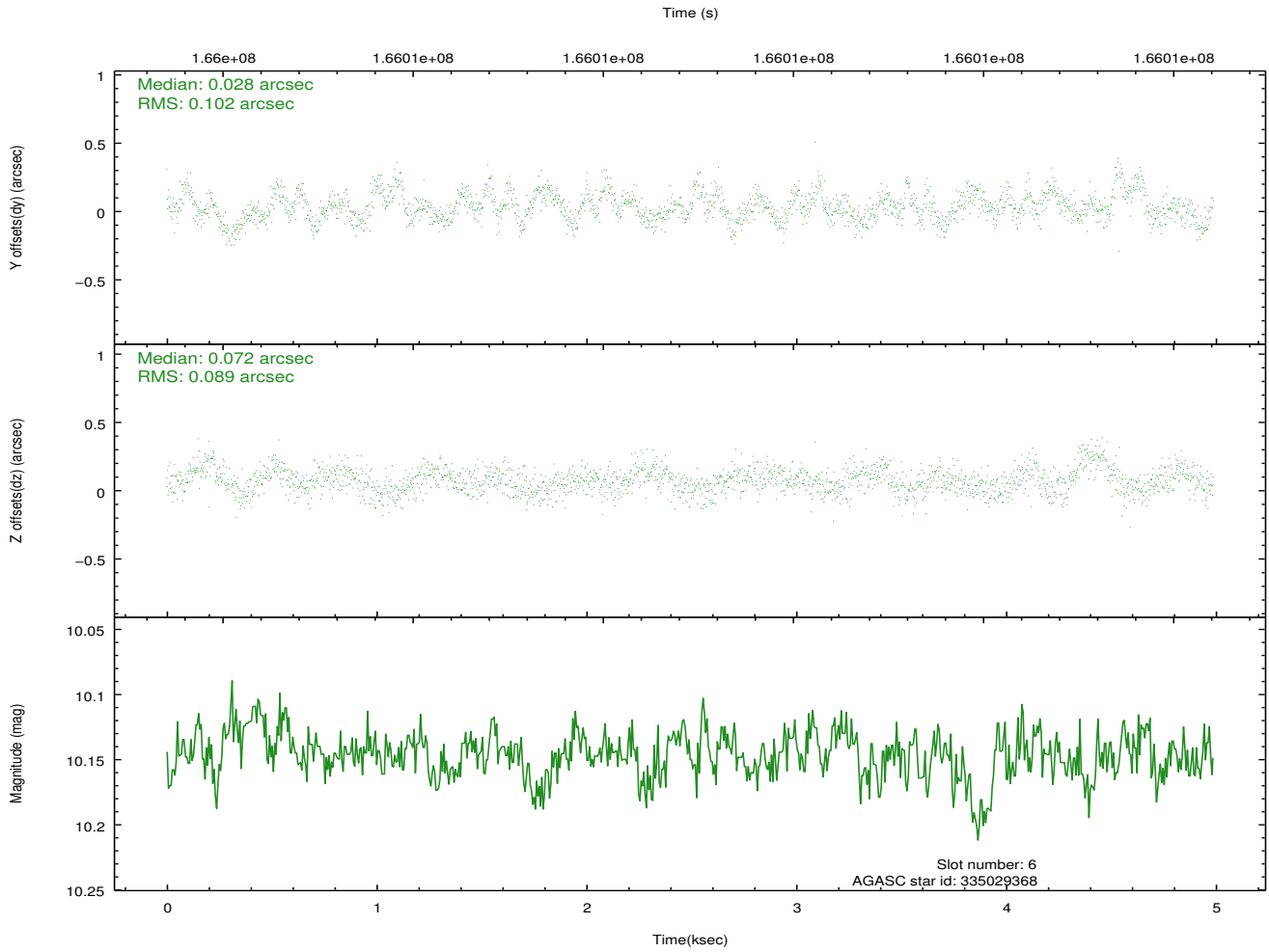
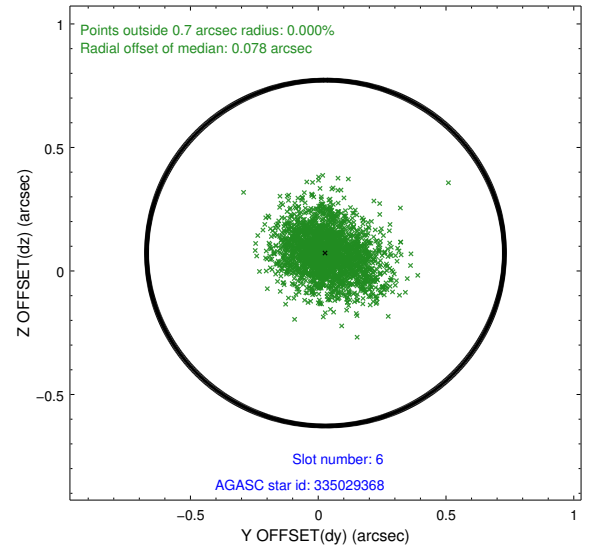
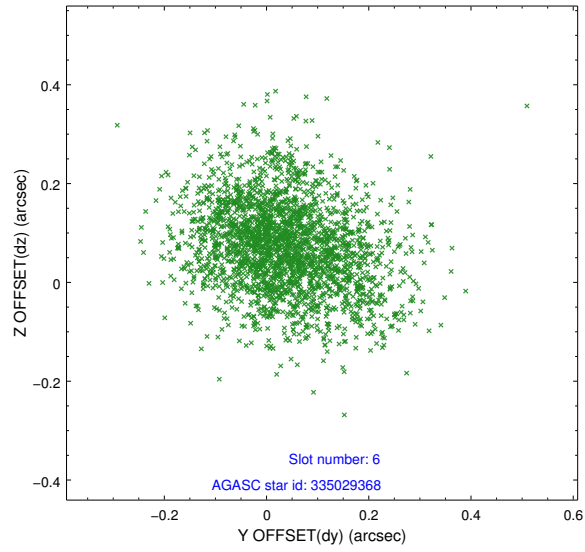
## 2.4.2 Slot 4



### 2.4.3 Slot 5

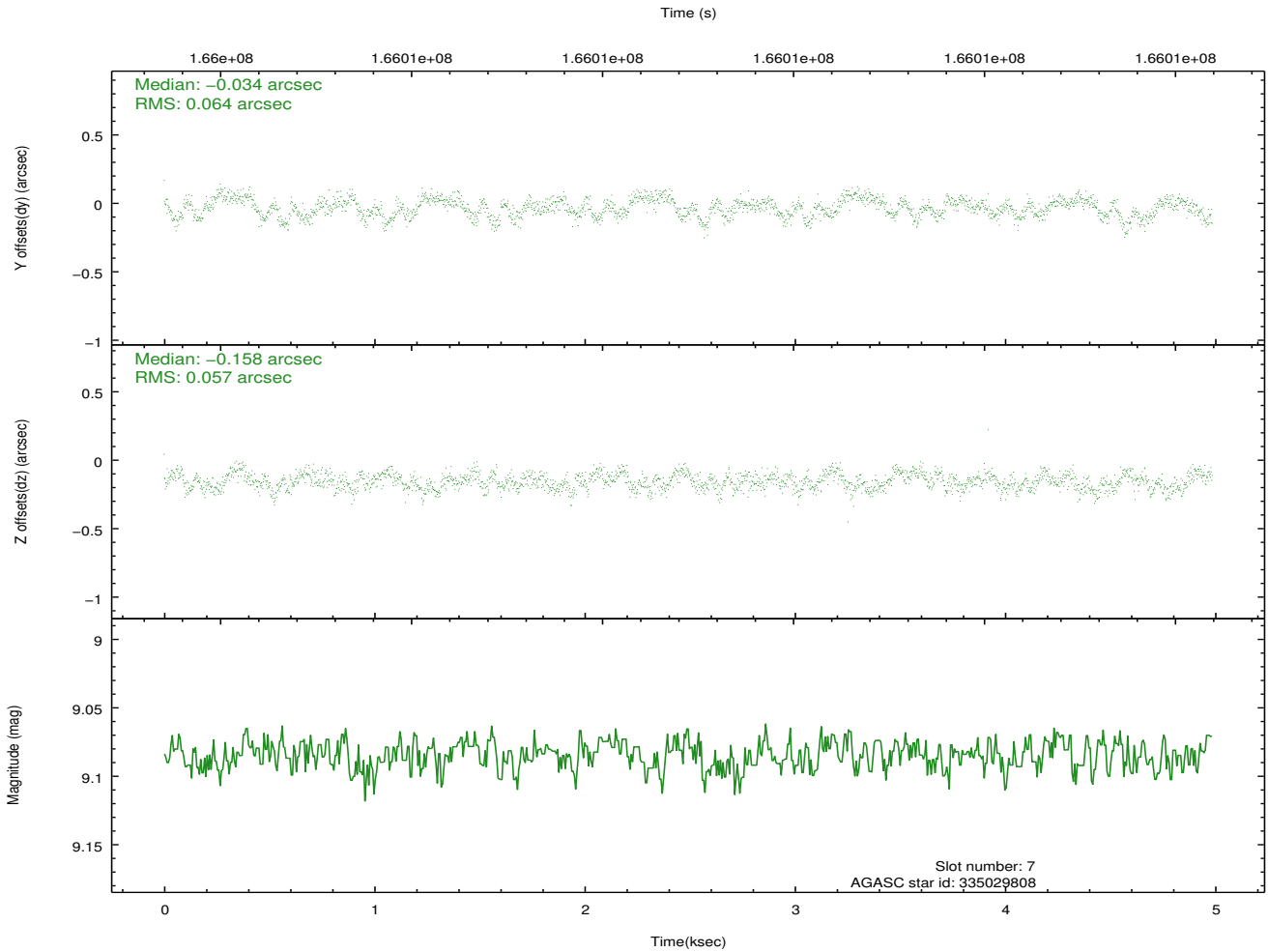
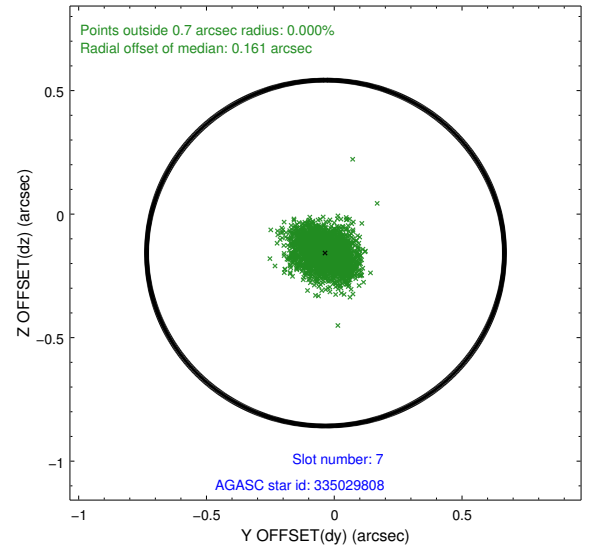
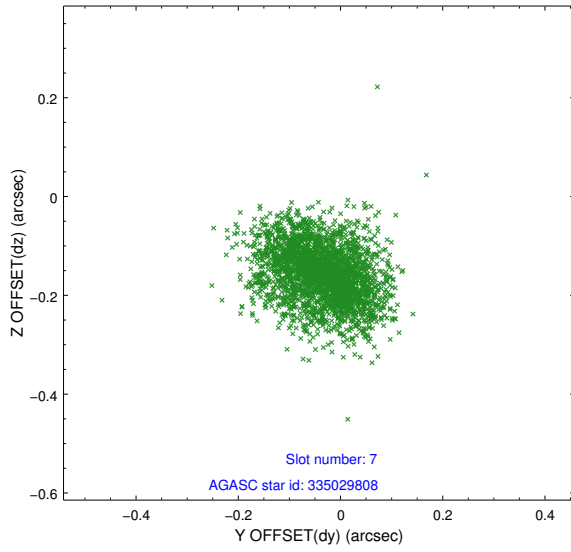


## 2.4.4 Slot 6



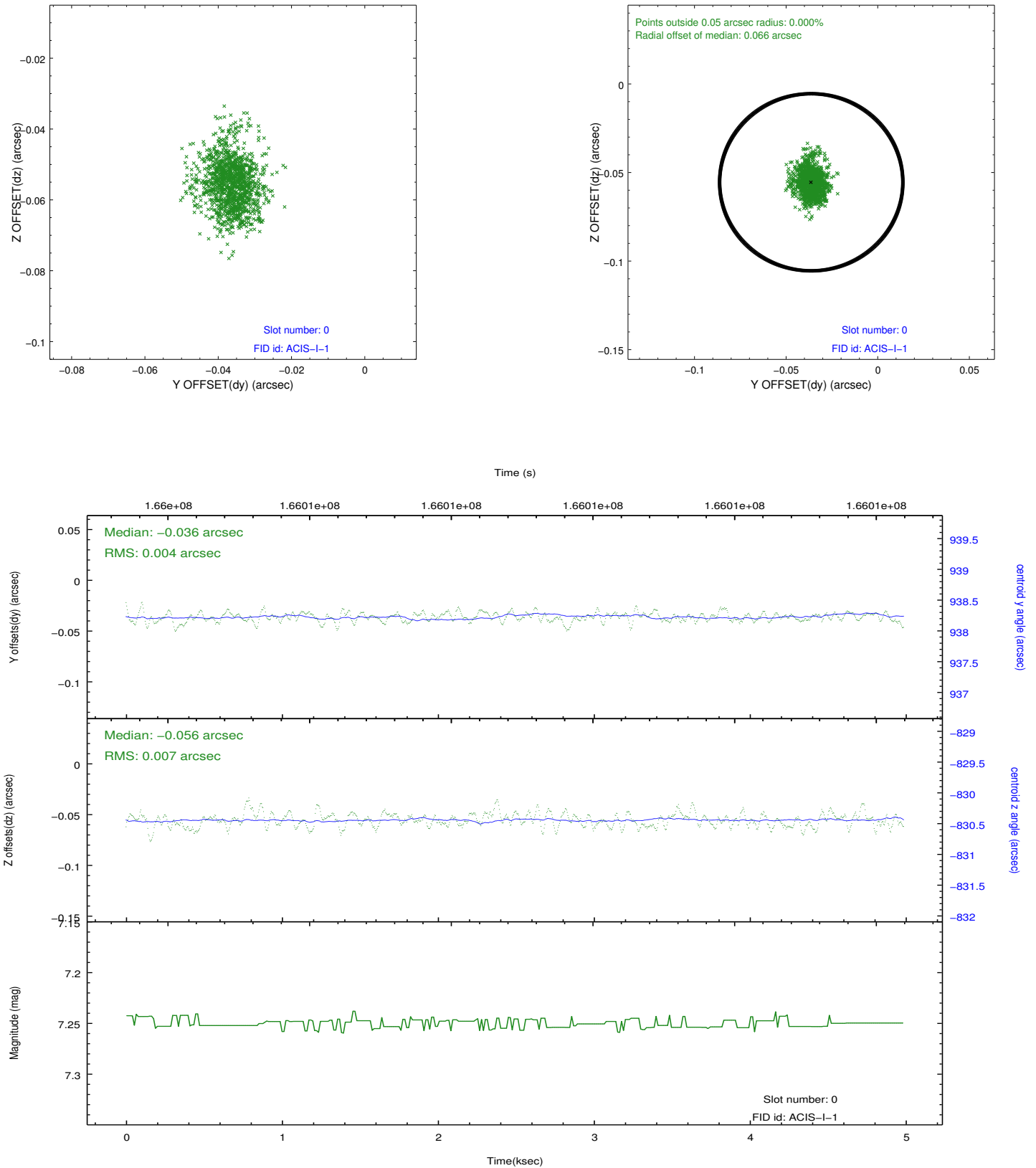


## 2.4.5 Slot 7

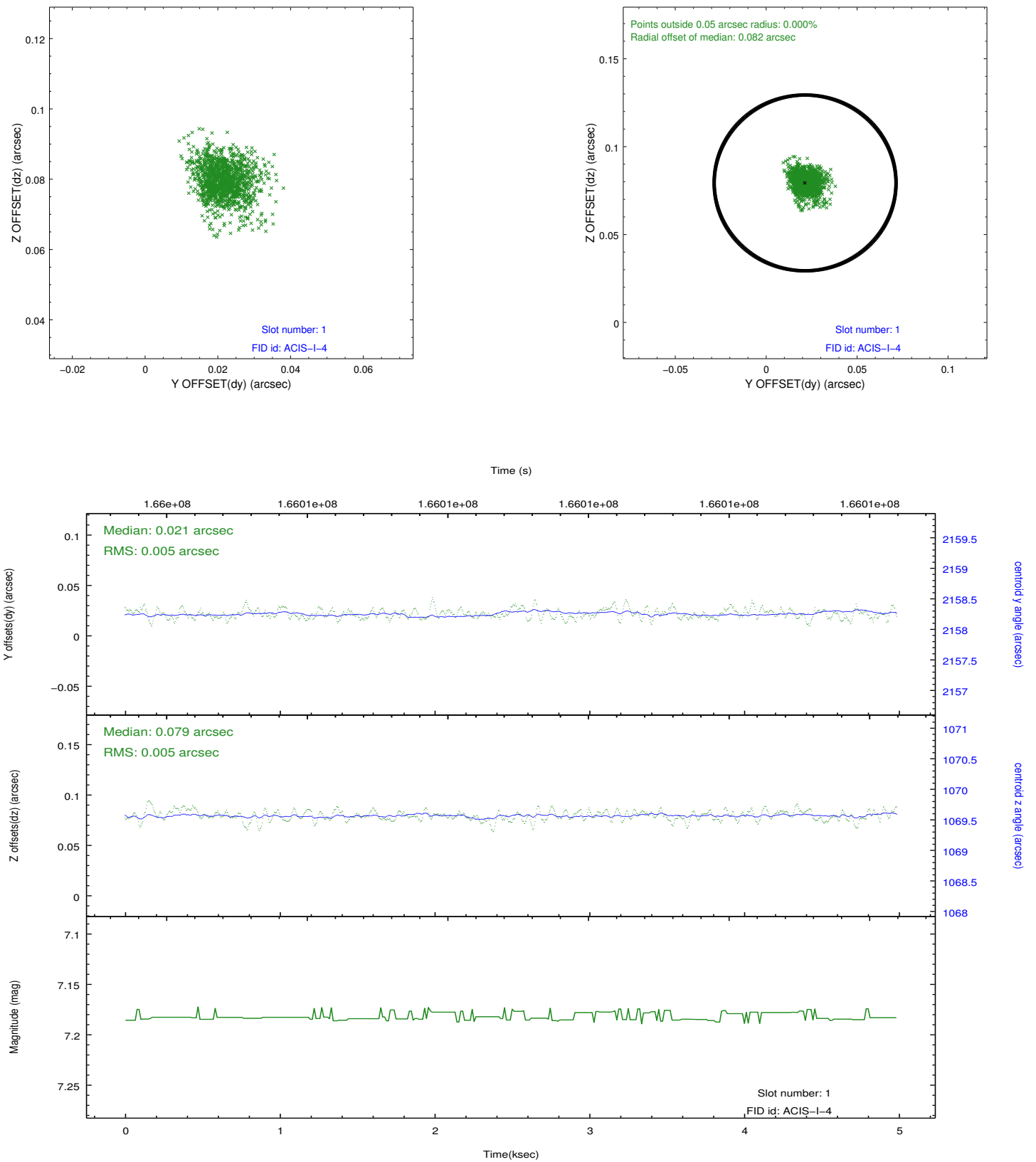


## 2.5 FID Slots

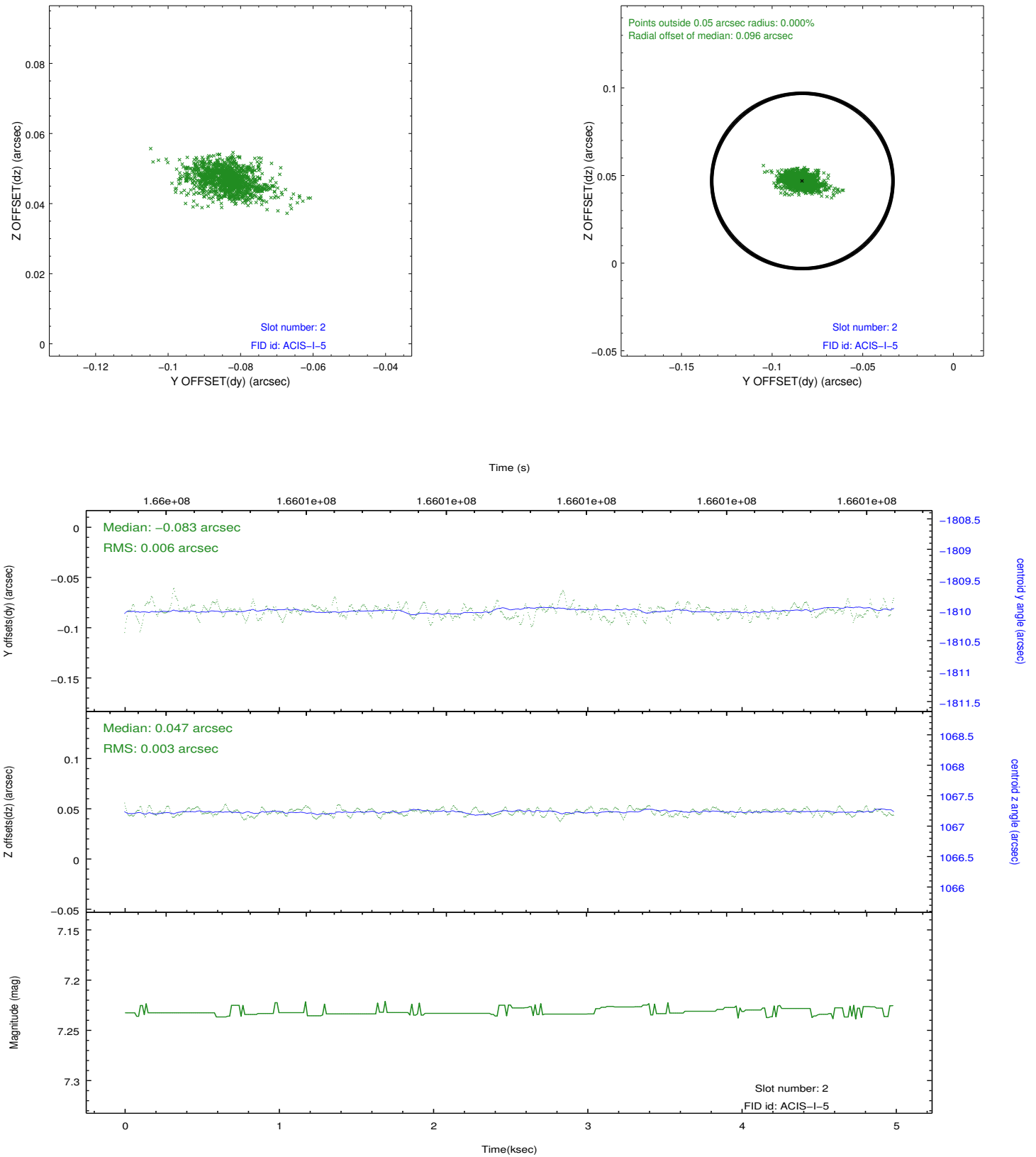
### 2.5.1 Slot 0



## 2.5.2 Slot 1



### 2.5.3 Slot 2



## **A Summary**

### **A.1 Status**

V&V Scientist	Jen Lauer
V&V Date (YYYY-MM-DD)	2012.11.13
V&V Edition	1
V&V Disposition and Status	OK
V&V Charge Time	4.576

### **A.2 Comments**