

V&V Reference Report

L2 ASCDS Version : 7.6.8

Observation 4239 - L2 Version 001
Chandra X-Ray Center

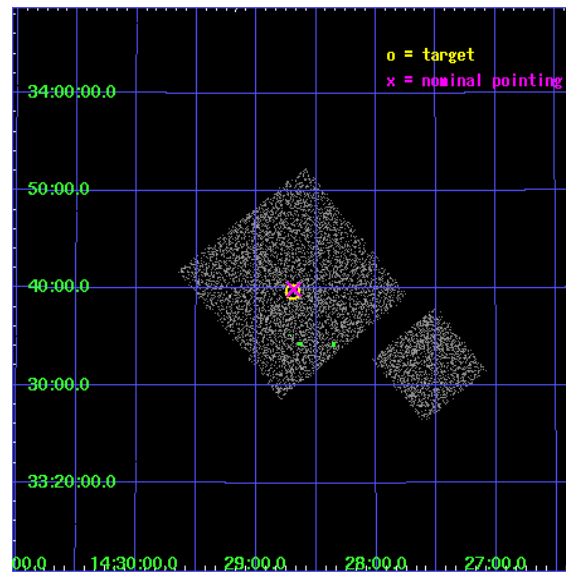
L2 Processing Date : Jul 30 2006

Contents

1	Front	2
2	OBI	3
2.1	OBI	3
2.1.1	Images	3
2.1.2	Bias	3
2.1.3	Parameters	4
2.1.4	Events	4
2.2	Compared Parameters	5
2.3	Aspect	6
2.4	Star Slots	9
2.4.1	Slot 3	9
2.4.2	Slot 4	10
2.4.3	Slot 5	11
2.4.4	Slot 6	12
2.4.5	Slot 7	13
2.5	FID Slots	14
2.5.1	Slot 0	14
2.5.2	Slot 1	15
2.5.3	Slot 2	16
3	Point Sources	17
A	Summary	18
A.1	Status	18
A.2	Comments	18

1 Front

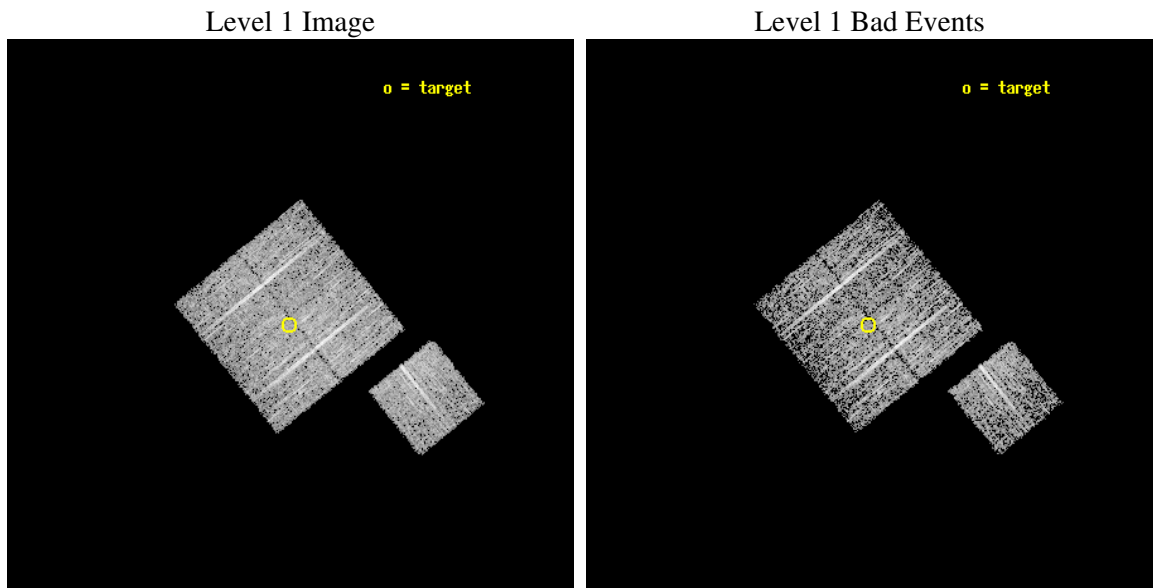
seq_num	900282
obs_id	4239
title	A CHANDRA WIDE-FIELD SURVEY TO MAP THE COSMIC WEB AND INVESTIGATE THE EVOLUTION OF NUCLEAR ACCRETION
observer	Dr. Christine Jones
object	SD38
dtcycle	0
cycle	P
ra_targ	217.17418
dec_targ	33.660612
ra_nom	217.17153339668
dec_nom	33.664658680702
roll_nom	141.01016273947
revision	2
ontime	4575.5999912024
livetime	4515.8164088096
ontime0	4575.5999912024
ontime1	4575.5999912024
ontime2	4575.5999912024
ontime3	4575.5999912024
ontime6	4575.5999912024
l2events	9185



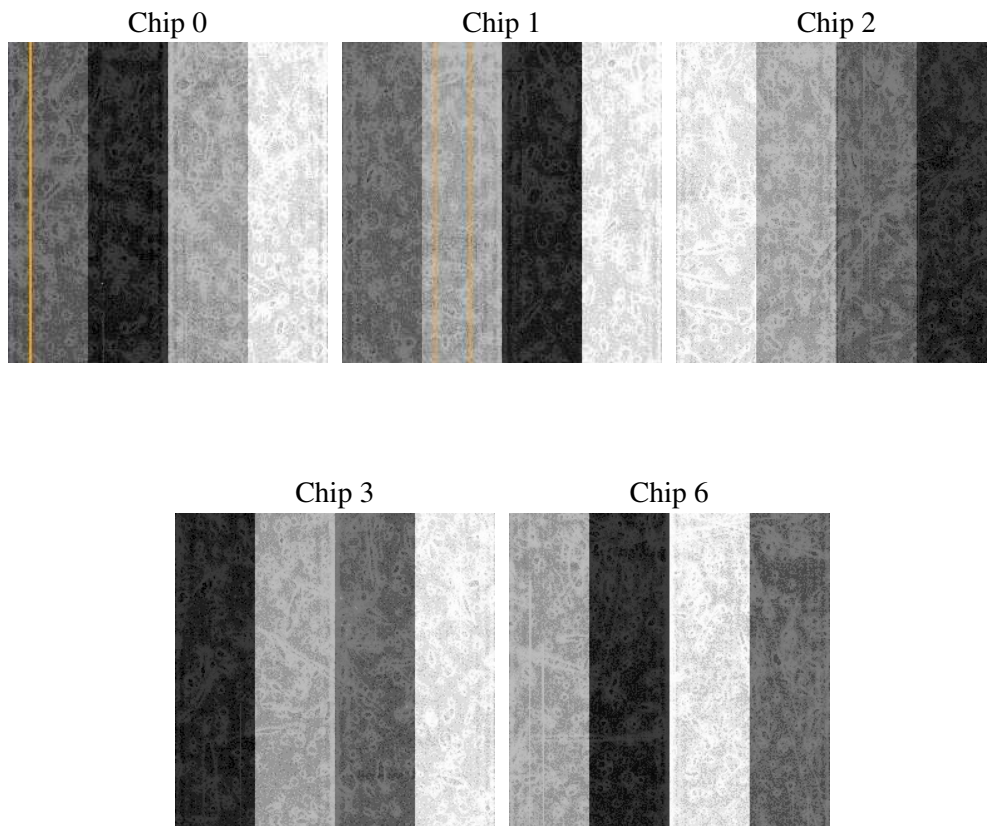
2 OBI

2.1 OBI

2.1.1 Images



2.1.2 Bias



2.1.3 Parameters

obi_num	1
ascdsver	7.6.8
caldbver	3.2.2
date	2006-07-30T05:54:35
revision	2

sched_exp_time	4800.000000
ontime	4579.5846131742
ontime0	4582.7256033421
ontime1	4579.5846131742
ontime2	4579.5846131742
ontime3	4579.5846131742
ontime6	4582.7256232798
l1events	115014

2.1.4 Events

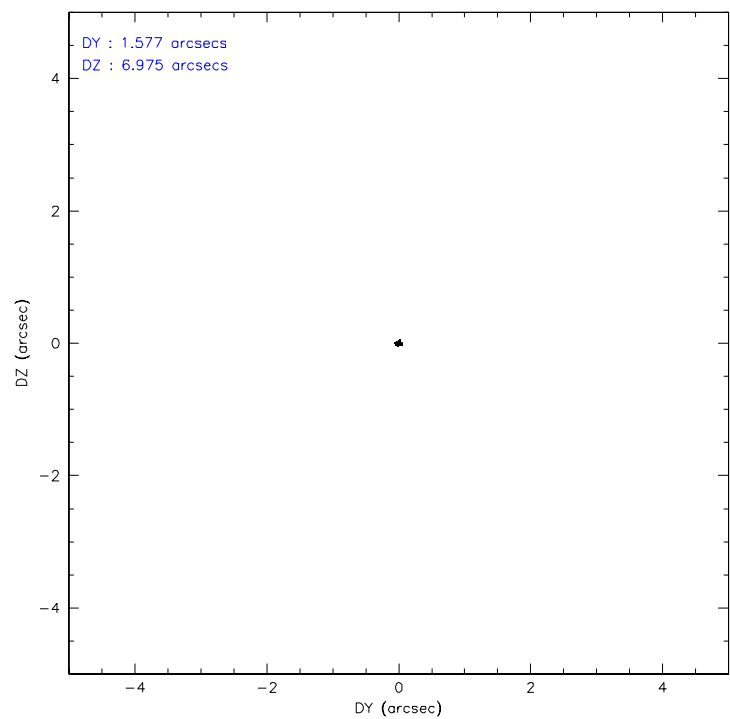
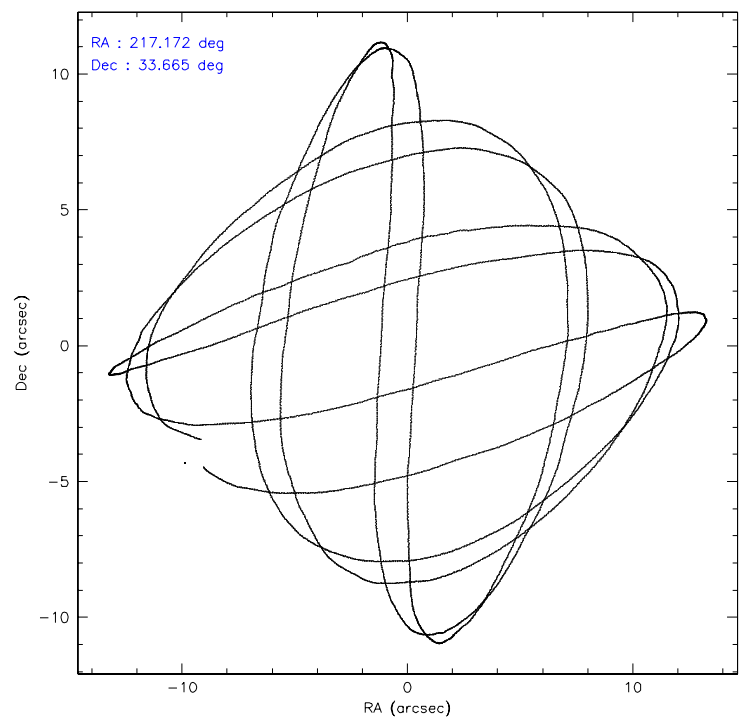
	ccd 0	ccd 1	ccd 2	ccd 3	ccd 6
level 1 events	21293	21478	26433	22900	22910
rejected events	19113	19238	24137	20726	20597
rejected %	89%	89%	91%	90%	89%

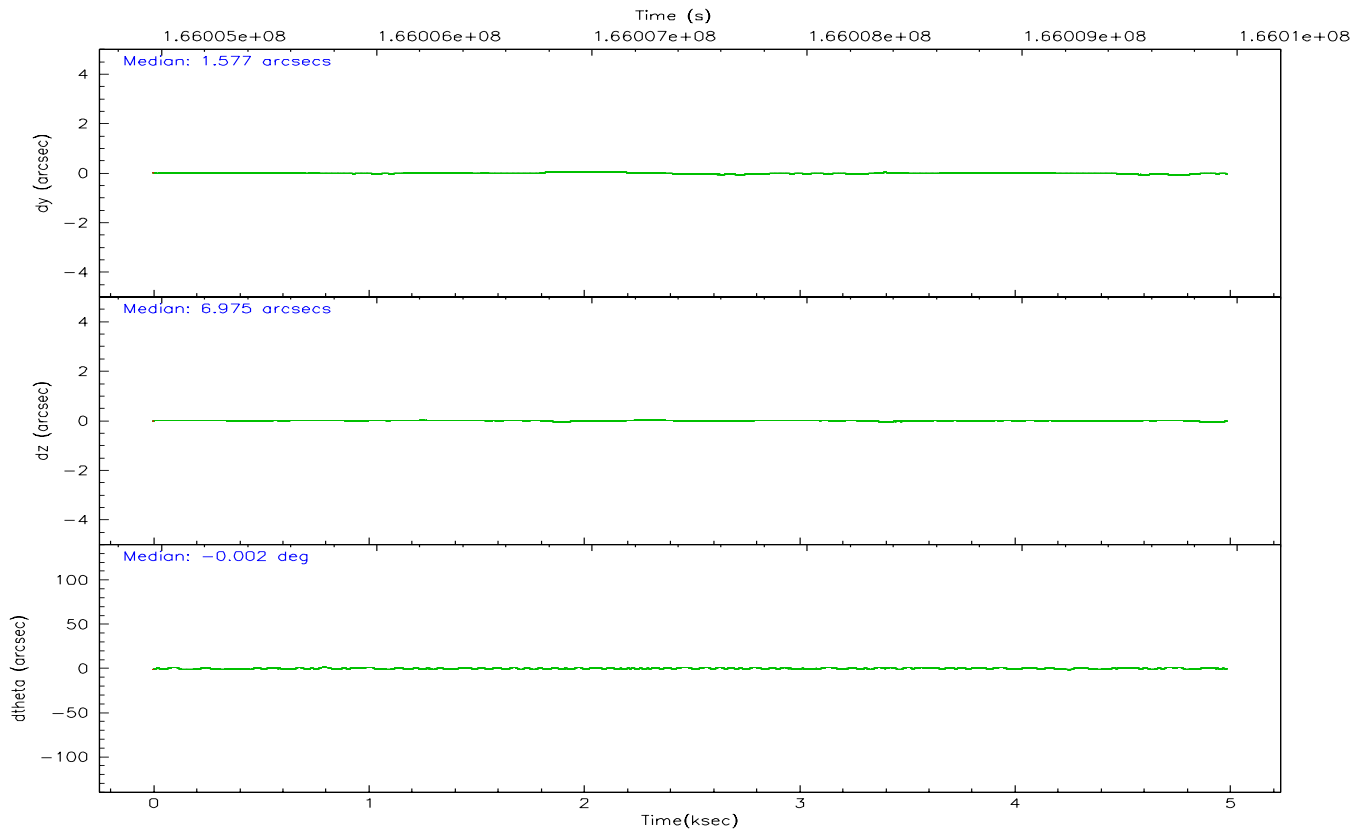
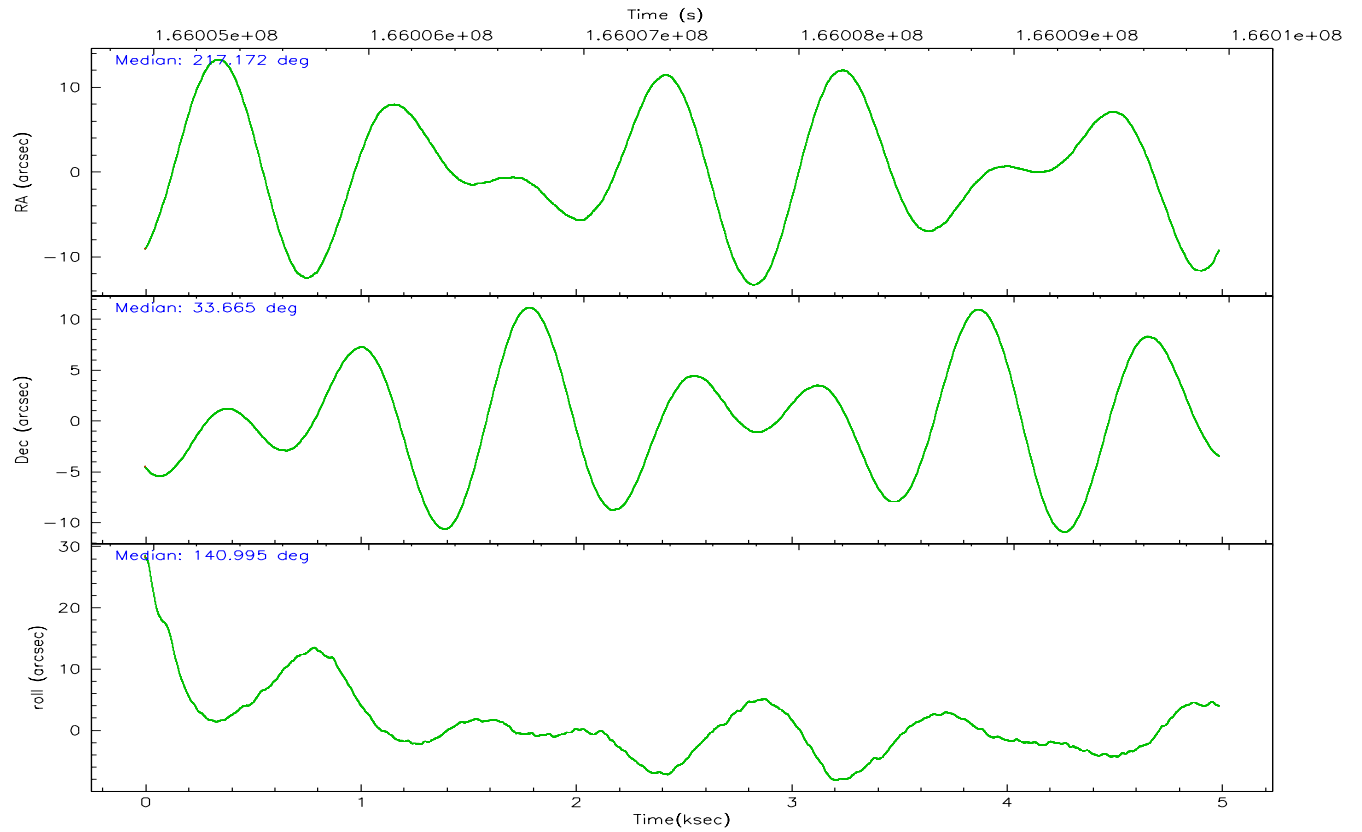
	ccd 0	ccd 1	ccd 2	ccd 3	ccd 6
grade 0 events	811	763	851	863	819
	3%	3%	3%	3%	3%
grade 1 events	14	19	6	16	11
	0%	0%	0%	0%	0%
grade 2 events	455	482	552	408	518
	2%	2%	2%	1%	2%
grade 3 events	256	301	227	259	268
	1%	1%	0%	1%	1%
grade 4 events	265	280	264	210	268
	1%	1%	0%	0%	1%
grade 5 events	630	717	649	711	738
	2%	3%	2%	3%	3%
grade 6 events	396	415	403	435	442
	1%	1%	1%	1%	1%
grade 7 events	18466	18501	23481	19998	19846
	86%	86%	88%	87%	86%

2.2 Compared Parameters

Parameter	Planned	Actual	Parameter	Planned	Actual
Instrument	ACIS	ACIS	Obspar format version number	6	6
Detector	ACIS-01236	ACIS-01236	Obspar file type	PREDICTED	ACTUAL
Grating	NONE	NONE	Obspar update status	NONE	UPDATED
Data mode	VFAINT	VFAINT	On-chip summing requested	N	N
Observation mode	POINTING	POINTING	Subarray requested	NONE	NONE
Pointing RA	217.204076	217.1715333966823	Alternating exposures requested	N	N
Pointing Dec	33.660530	33.66465868070158	Primary exposure time	0.000000	3.1
Pointing Roll	140.783429	141.0101627394722			
SIM focus pos (mm)	-0.782348	-0.7809083437167272			
SIM defocus (mm)	0	0.001439871863259334			
SIM translation stage pos (mm)	-233.592463	-233.5874344608287			
SIM translation stage offset (mm)	0	-0.005018542100998502			
Observation start time	166005145.184000	166004769.31335			
Observation start date	2003-04-06T08:31:21	2003-04-06T08:26:09			
Observation end time	166009945.184000	166010079.32608			
Observation end date	2003-04-06T09:51:21	2003-04-06T09:54:39			
Read mode	TIMED	TIMED			

2.3 Aspect



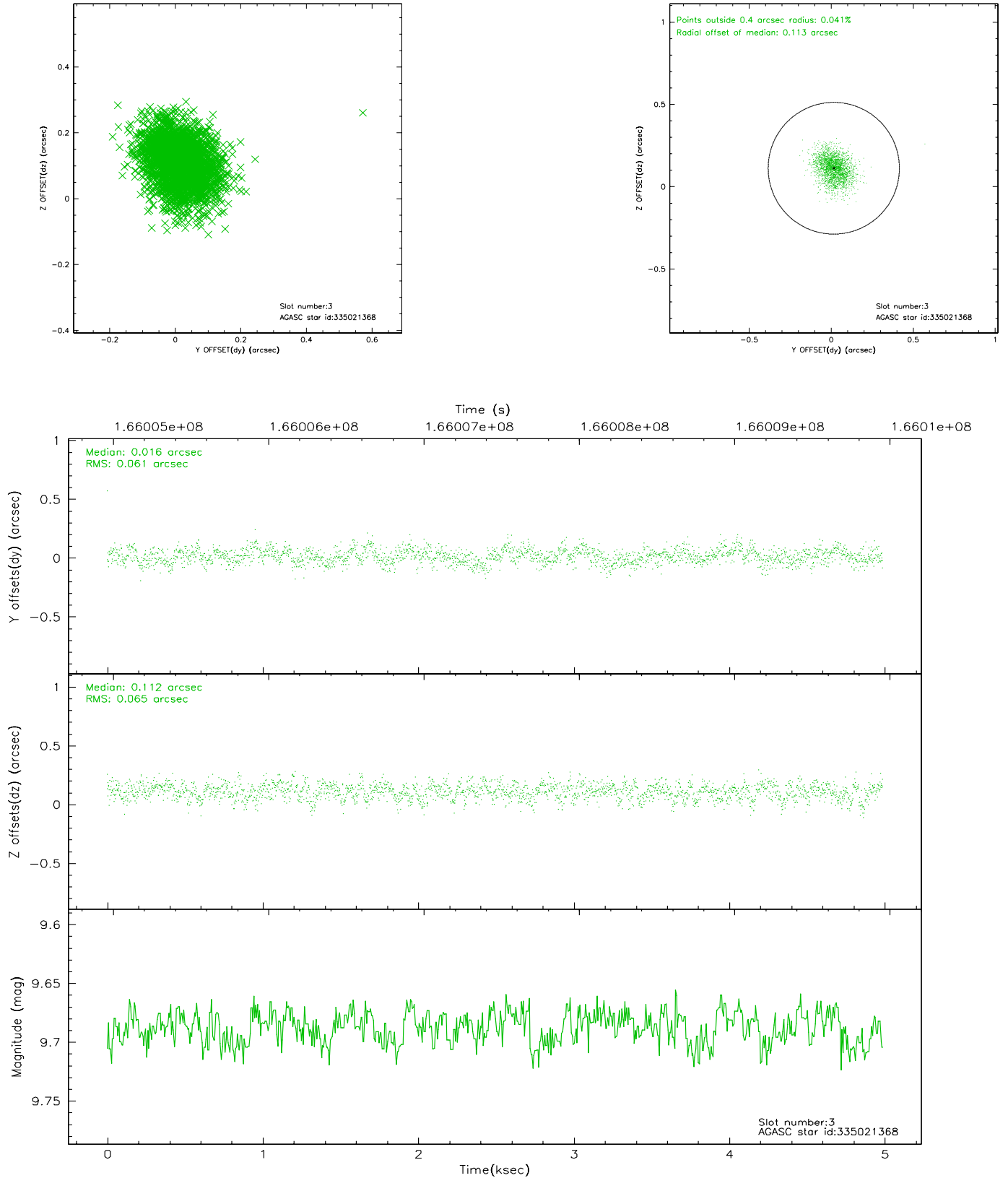


Slot Statistics

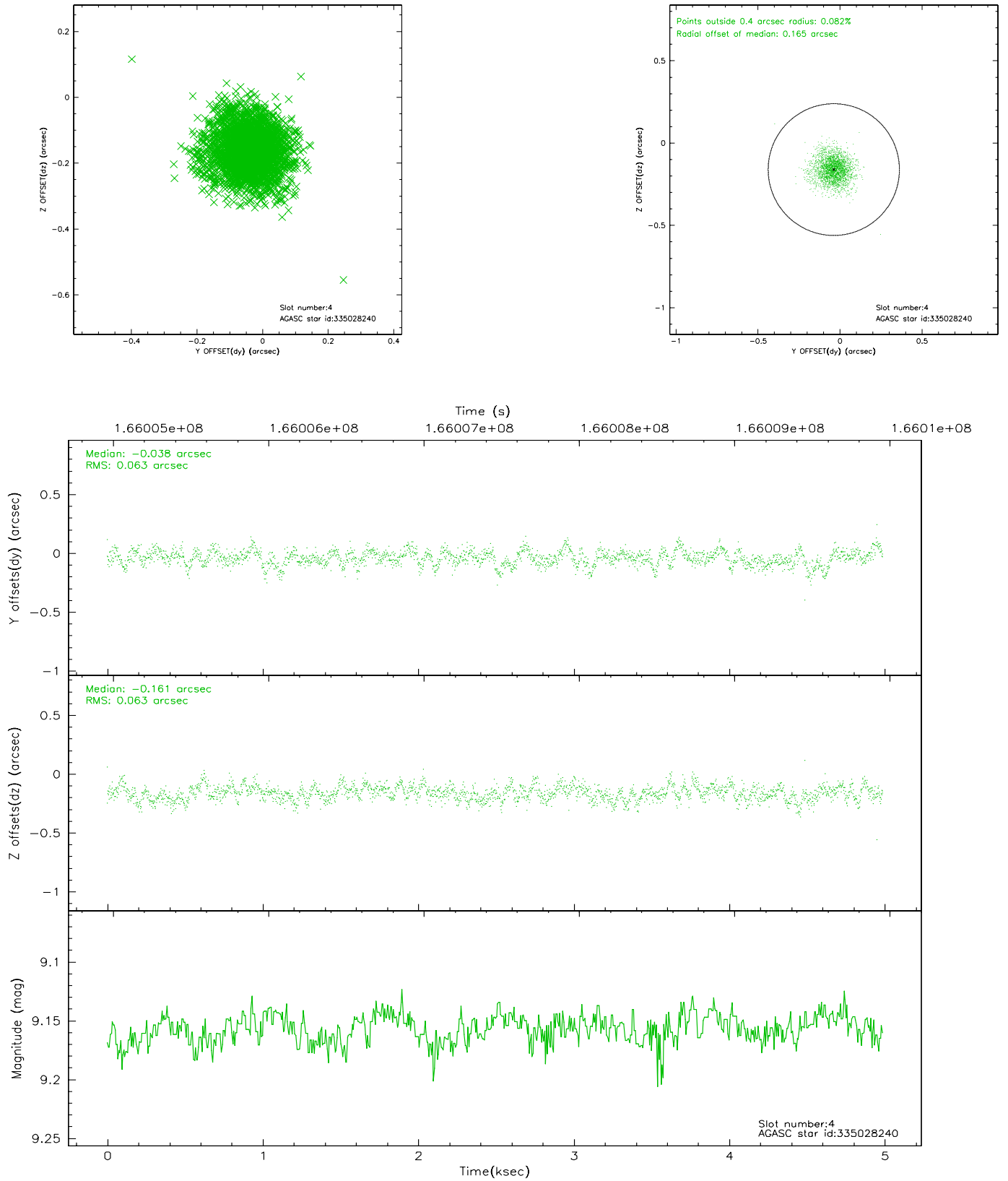
slot	status	id	mag	n_pts	med_dy	med_dz	dr1	dr2	ra	dec	mean_y	mean_z
0	FID	ACIS-I-1	7.25	1216	-0.046	-0.032	0.008	0.014	0.000000	0.000000	938.21	-830.40
1	FID	ACIS-I-4	7.18	1217	-0.010	0.068	0.007	0.012	0.000000	0.000000	2158.98	1068.89
2	FID	ACIS-I-5	7.23	1217	-0.043	0.035	0.006	0.011	0.000000	0.000000	-1808.20	1068.12
3	GUIDE	335021368	9.69	2434	0.016	0.112	0.095	0.152	217.529643	33.934817	-127.44	-1380.82
4	GUIDE	335028240	9.16	2433	-0.038	-0.161	0.093	0.155	216.746851	33.385009	439.64	1634.65
5	GUIDE	335028696	9.16	2433	0.025	0.138	0.082	0.132	217.260519	33.844112	287.79	-617.76
6	GUIDE	335029368	10.15	2426	0.028	0.072	0.143	0.240	217.181018	33.065030	-1301.56	1704.53
7	GUIDE	335029808	9.08	2433	-0.034	-0.158	0.092	0.144	216.789548	33.180488	-124.15	2127.30

2.4 Star Slots

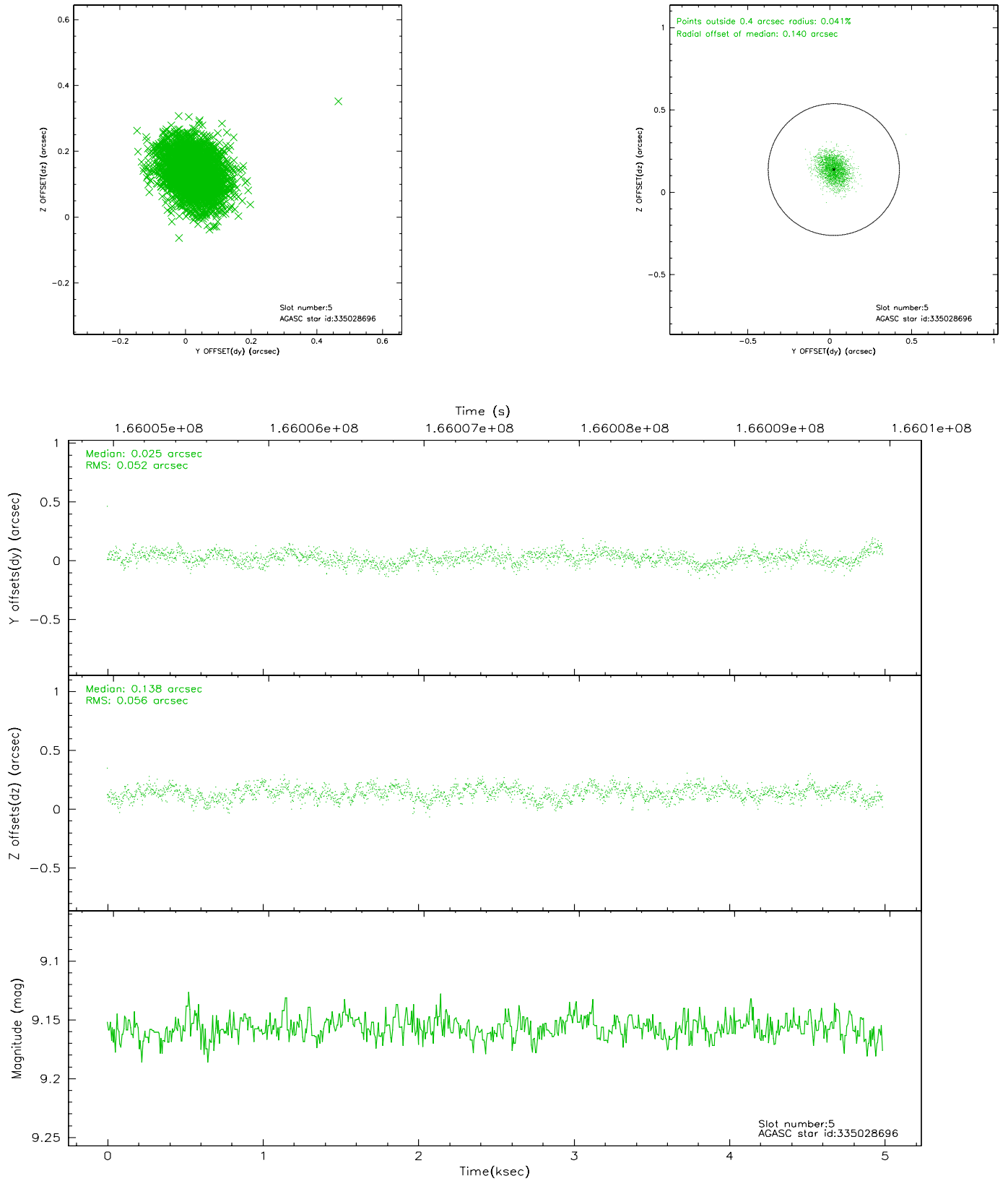
2.4.1 Slot 3



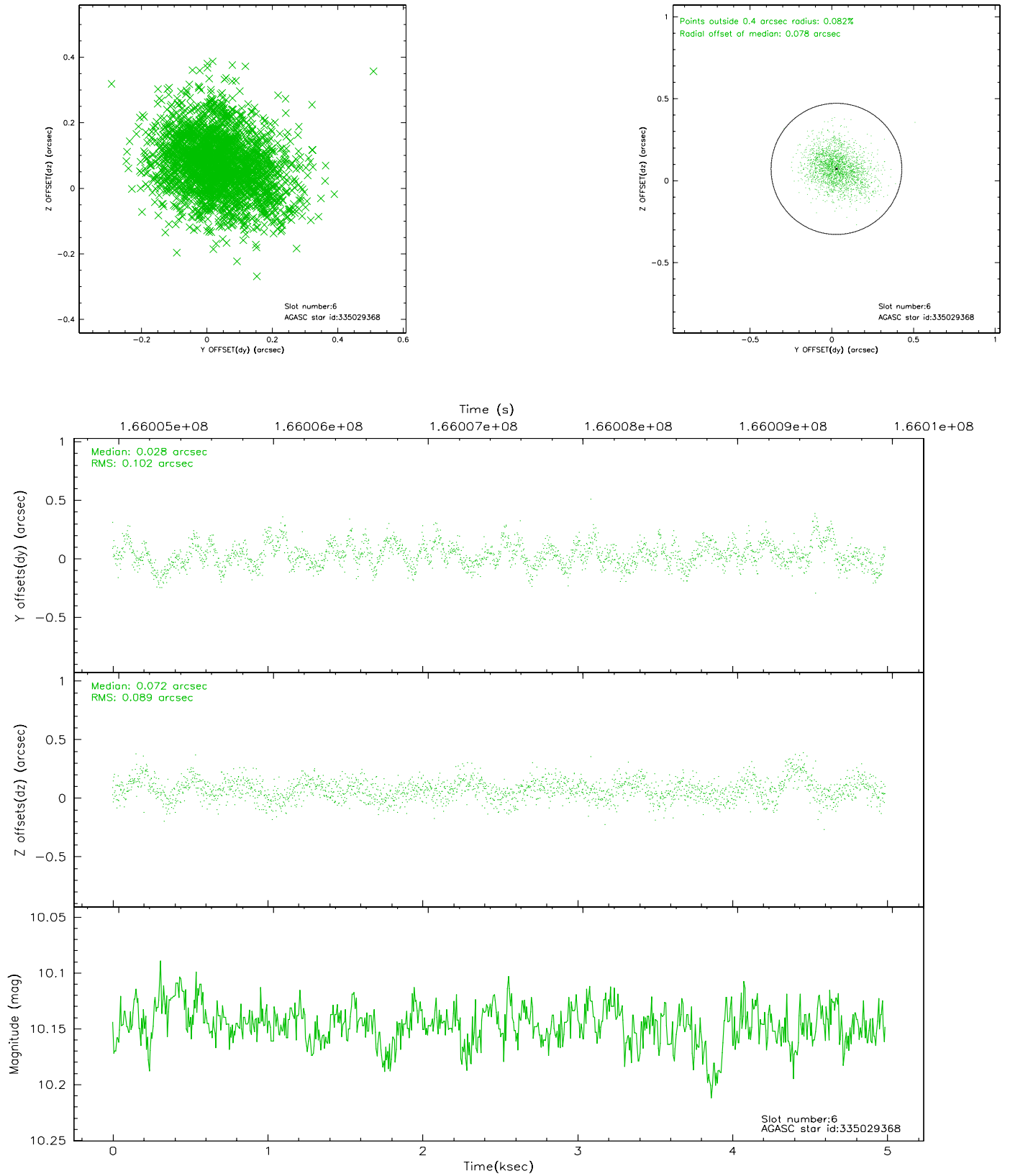
2.4.2 Slot 4



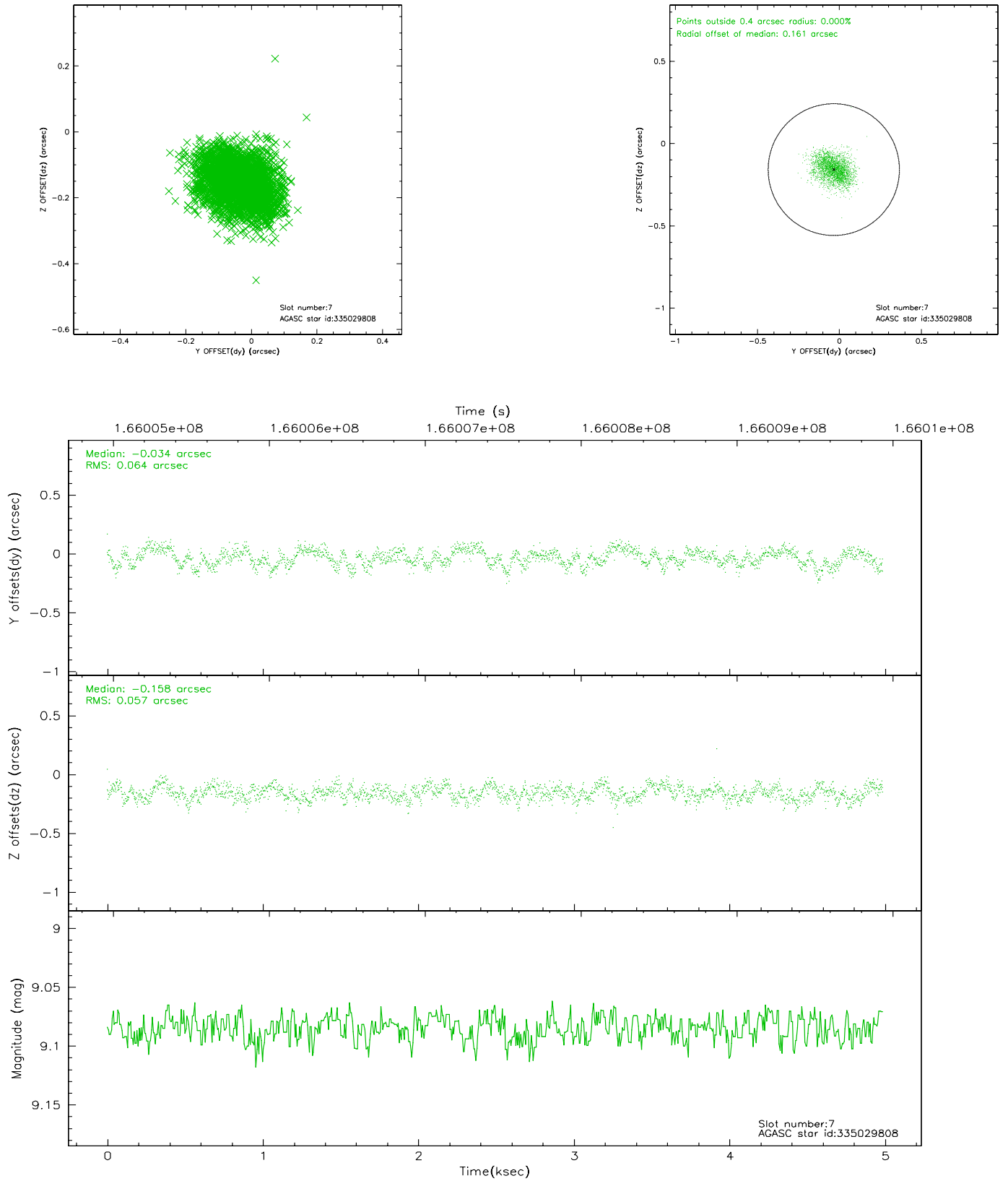
2.4.3 Slot 5



2.4.4 Slot 6

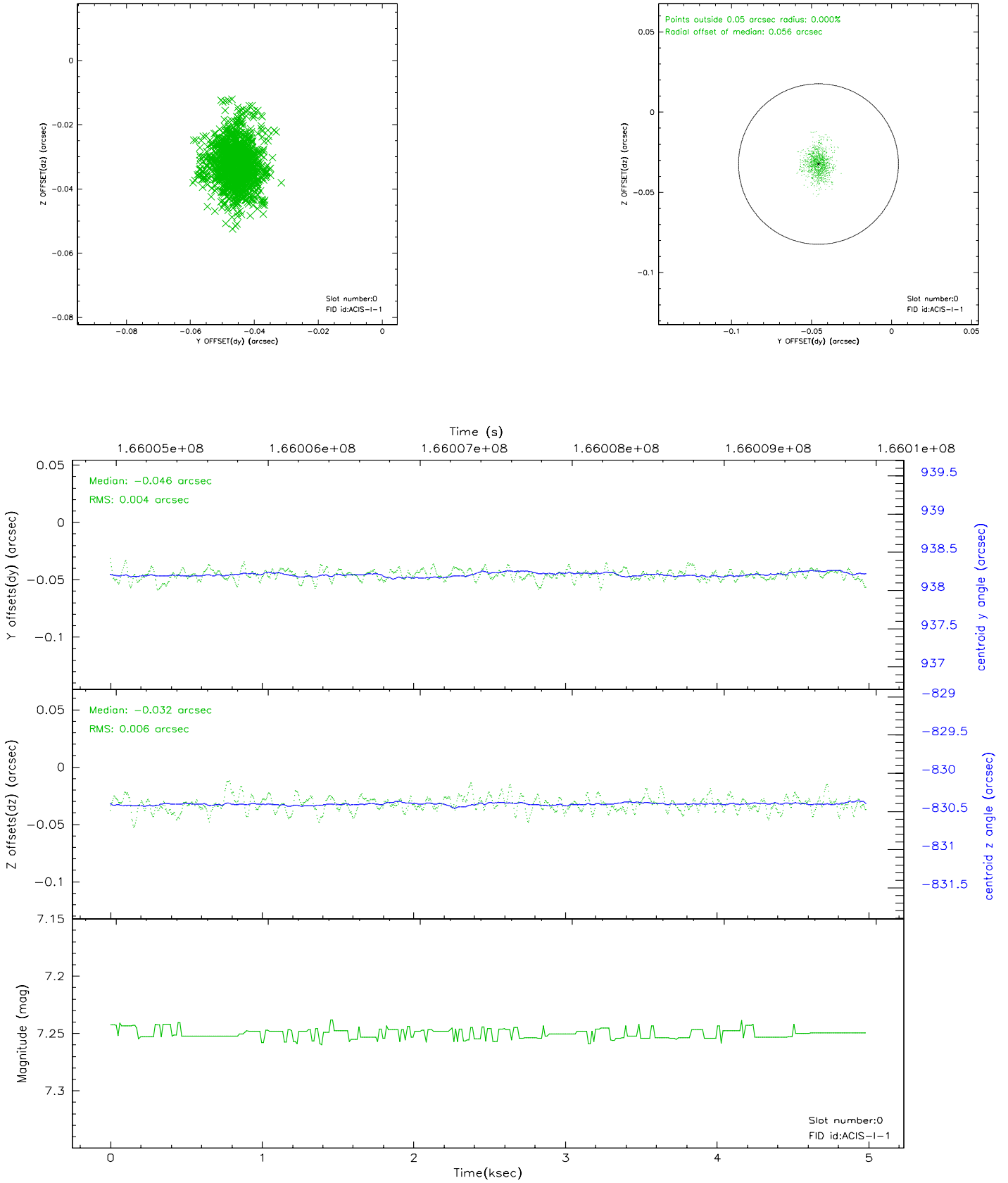


2.4.5 Slot 7

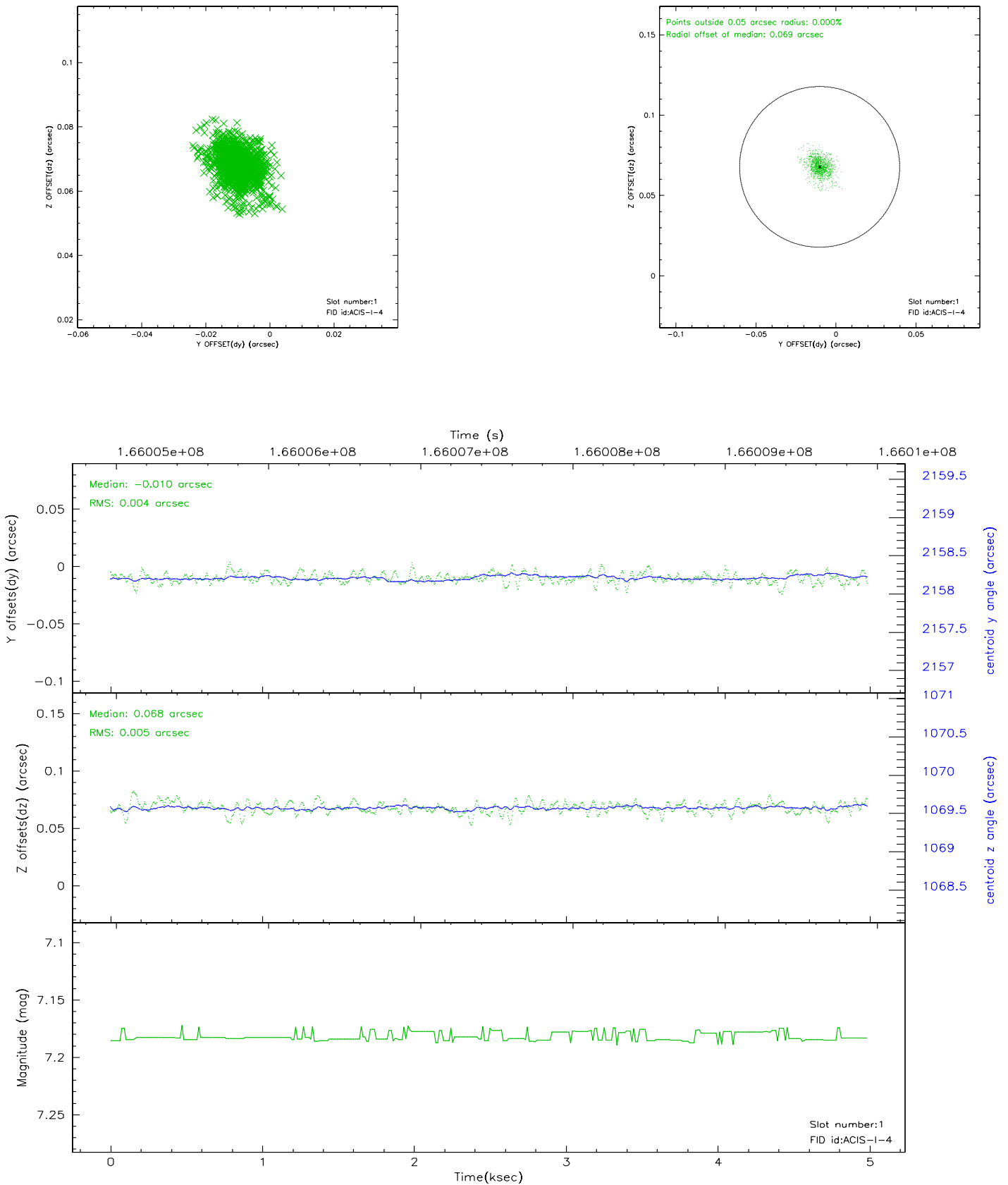


2.5 FID Slots

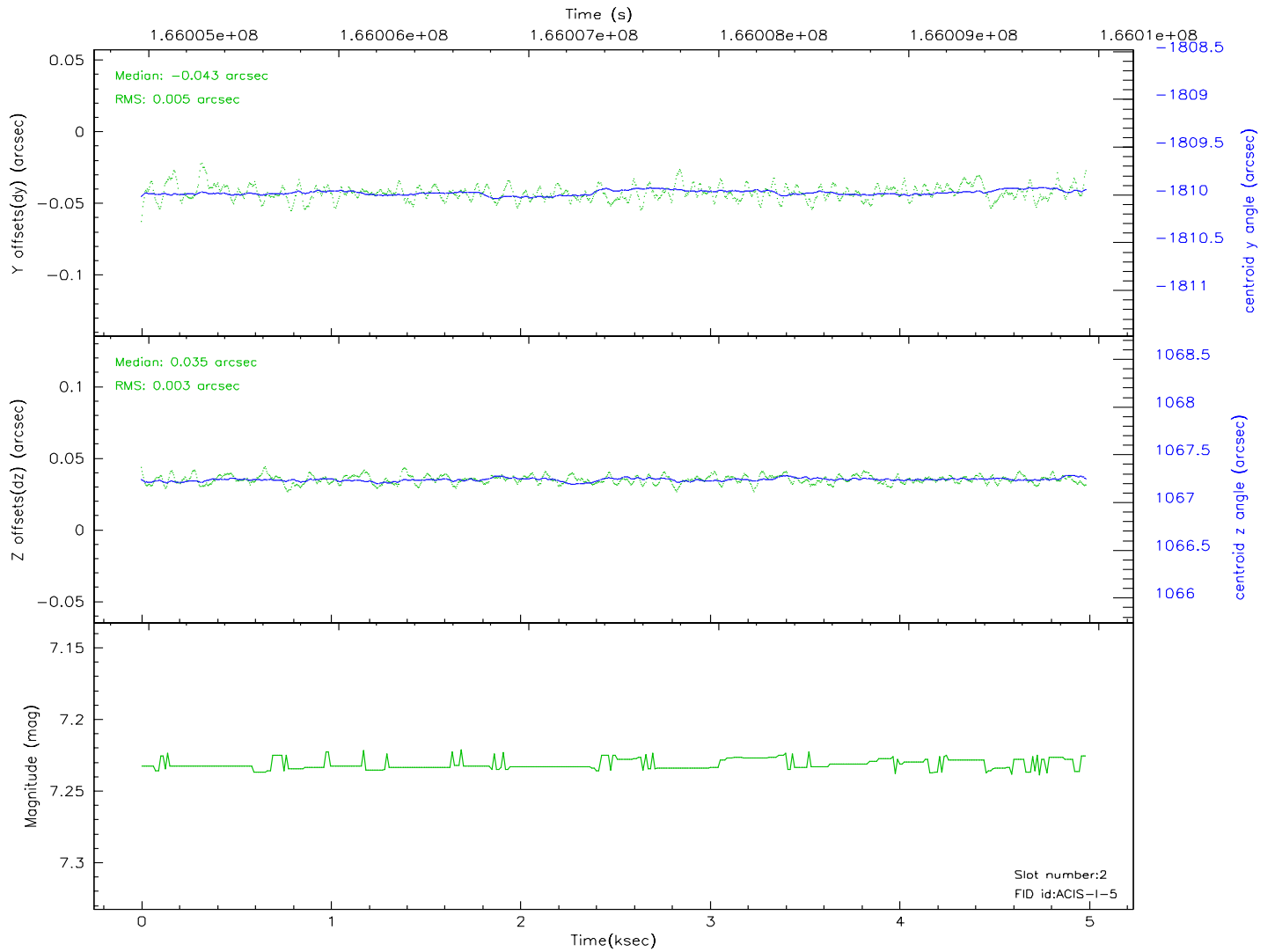
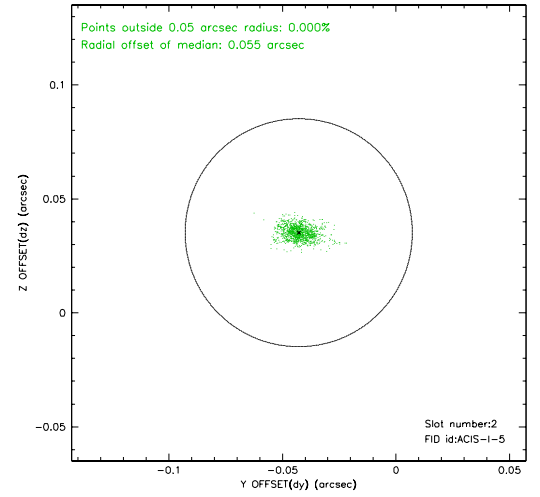
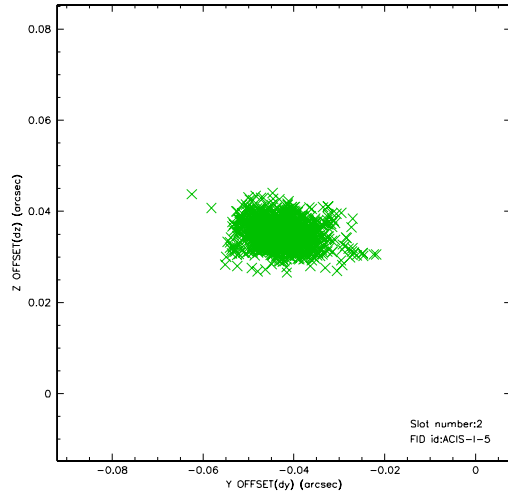
2.5.1 Slot 0



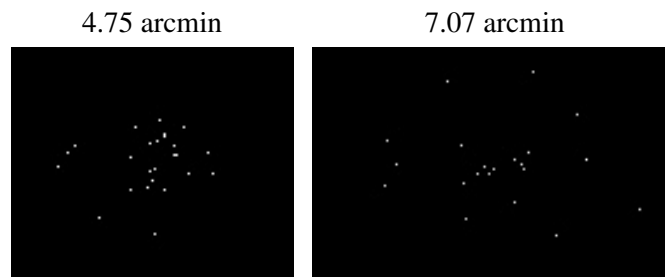
2.5.2 Slot 1



2.5.3 Slot 2



3 Point Sources



A Summary

A.1 Status

V&V Scientist	Jen Lauer
V&V Date (YYYY-MM-DD)	2006.07.30
V&V Edition	1
V&V Disposition and Status	OK
V&V Charge Time	4.576

A.2 Comments