

V&V Reference Report

L2 ASCDS Version : 7.6.8

Observation 4231 - L2 Version 001
Chandra X-Ray Center

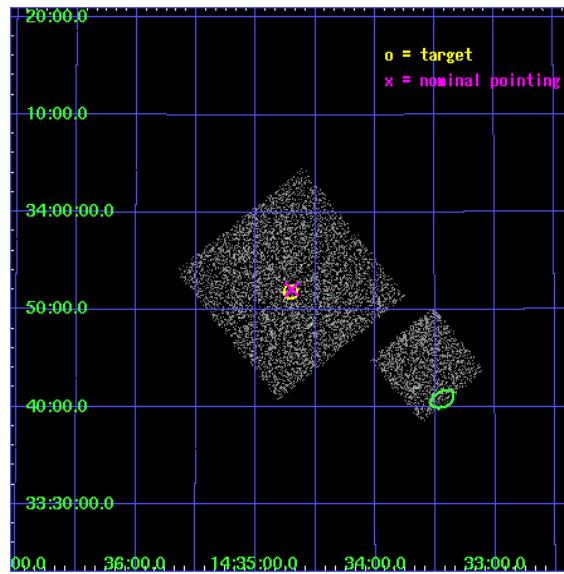
L2 Processing Date : Jul 29 2006

Contents

1	Front	2
2	OBI	3
2.1	OBI	3
2.1.1	Images	3
2.1.2	Bias	3
2.1.3	Parameters	4
2.1.4	Events	4
2.2	Compared Parameters	5
2.3	Aspect	6
2.4	Star Slots	9
2.4.1	Slot 3	9
2.4.2	Slot 4	10
2.4.3	Slot 5	11
2.4.4	Slot 6	12
2.4.5	Slot 7	13
2.5	FID Slots	14
2.5.1	Slot 0	14
2.5.2	Slot 1	15
2.5.3	Slot 2	16
3	Point Sources	17
A	Summary	18
A.1	Status	18
A.2	Comments	18

1 Front

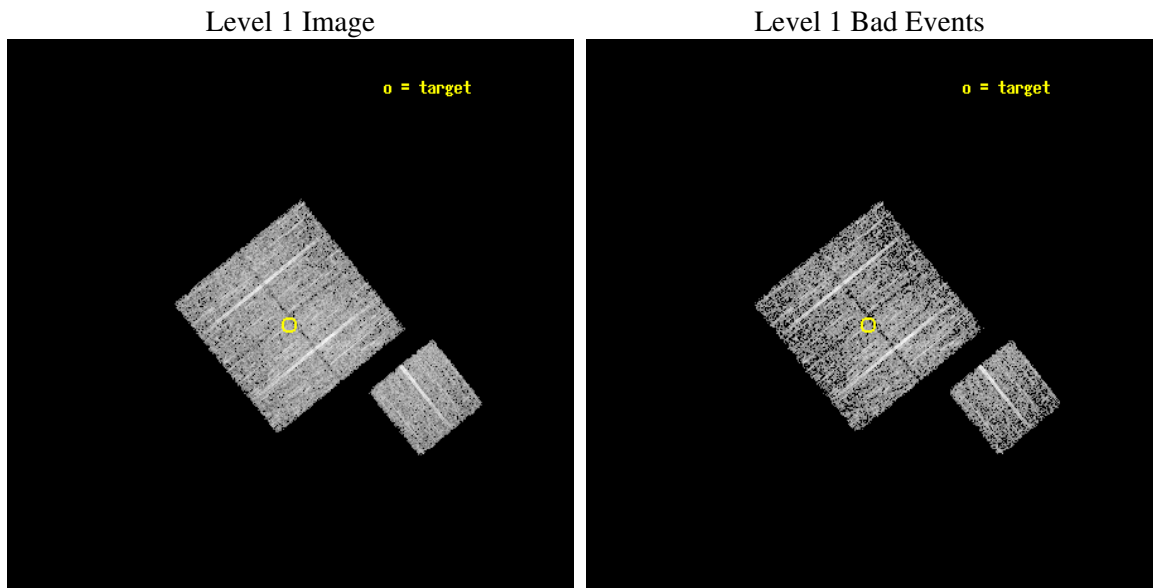
seq_num	900274
obs_id	4231
title	A CHANDRA WIDE-FIELD SURVEY TO MAP THE COSMIC WEB AND INVESTIGATE THE EVOLUTION OF NUCLEAR ACCRETION
observer	Dr. Christine Jones
object	SS14
dtcycle	0
cycle	P
ra_targ	218.676831
dec_targ	33.864306
ra_nom	218.67426927593
dec_nom	33.868329965011
roll_nom	141.01001908503
revision	2
ontime	4777.0999908149
livetime	4714.6836625851
ontime0	4777.0999908149
ontime1	4777.0999908149
ontime2	4777.0999908149
ontime3	4777.0999908149
ontime6	4777.0999908149
l2events	9826



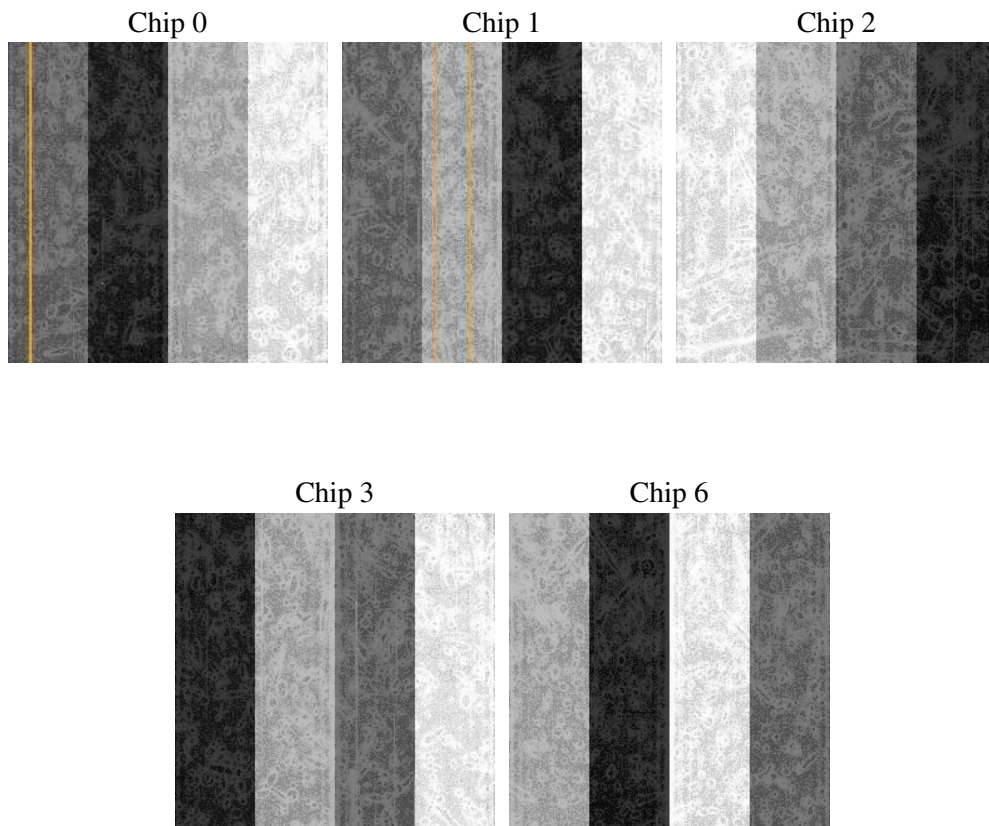
2 OBI

2.1 OBI

2.1.1 Images



2.1.2 Bias



2.1.3 Parameters

obi_num	1
ascdsver	7.6.8
caldbver	3.2.2
date	2006-07-30T02:01:27
revision	2

sched_exp_time	5000.000000
ontime	4780.6143416464
ontime0	4780.6143416464
ontime1	4780.6143615842
ontime2	4780.6143615842
ontime3	4780.6143416464
ontime6	4780.6143416464
llevents	120501

2.1.4 Events

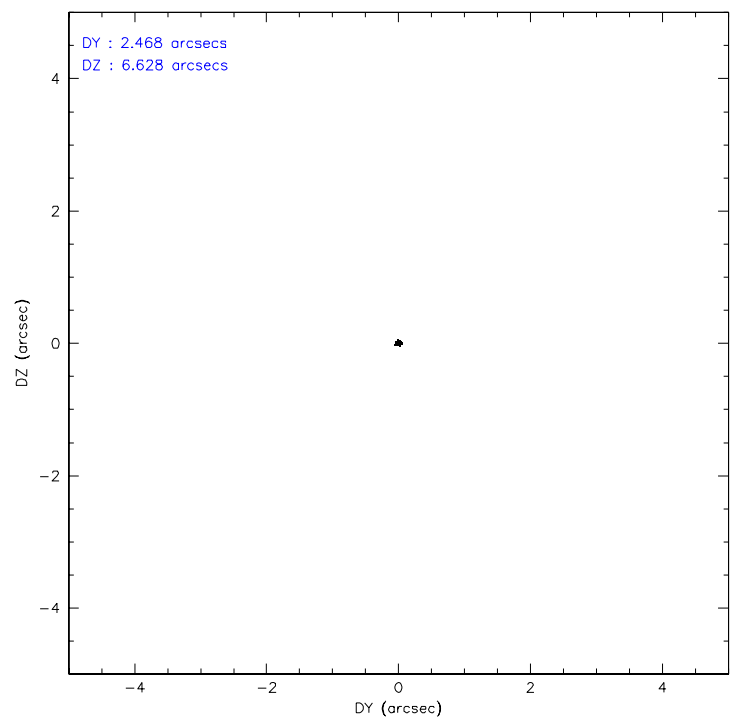
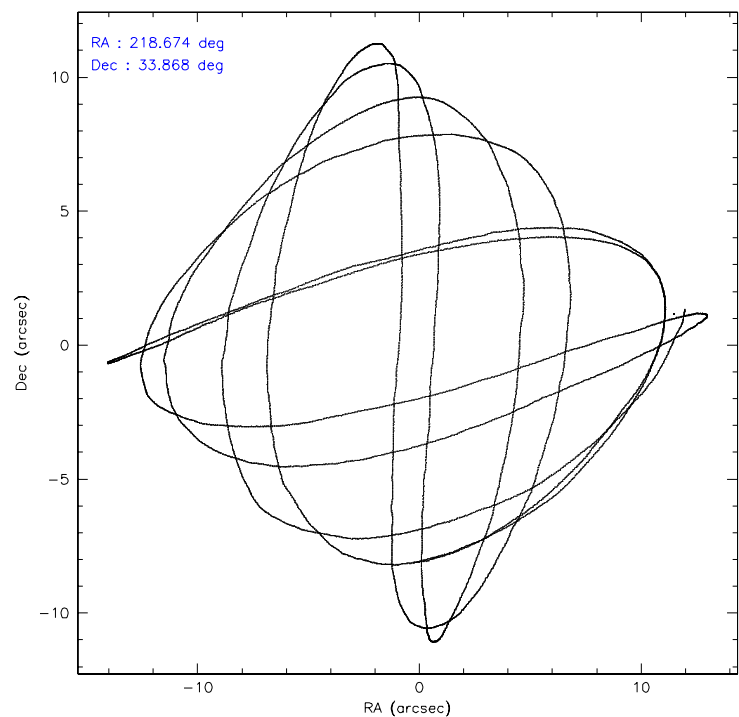
	ccd 0	ccd 1	ccd 2	ccd 3	ccd 6
level 1 events	22450	22971	27144	24619	23317
rejected events	20042	20556	24675	22296	20884
rejected %	89%	89%	90%	90%	89%

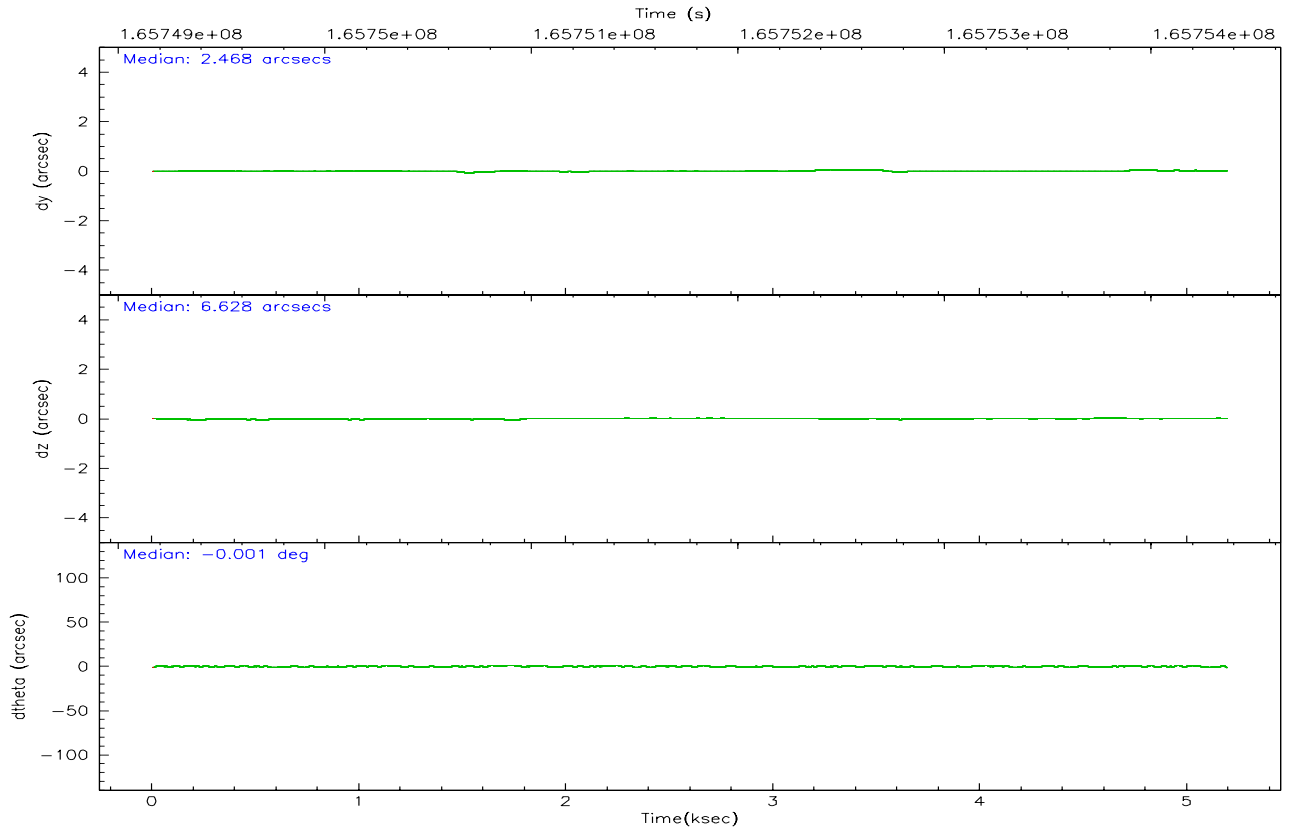
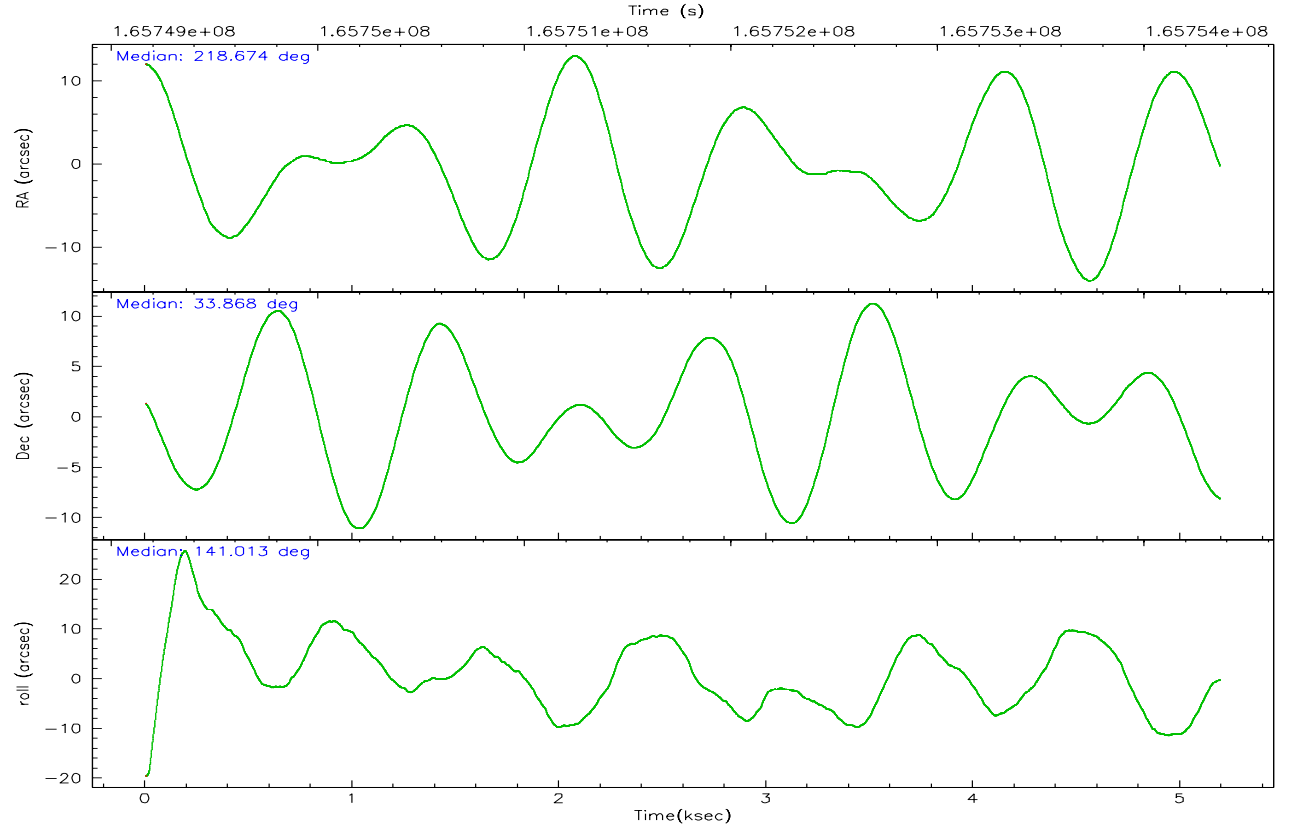
	ccd 0	ccd 1	ccd 2	ccd 3	ccd 6
grade 0 events	848	826	909	872	937
	3%	3%	3%	3%	4%
grade 1 events	12	9	10	15	6
	0%	0%	0%	0%	0%
grade 2 events	556	538	613	496	504
	2%	2%	2%	2%	2%
grade 3 events	281	308	270	301	274
	1%	1%	0%	1%	1%
grade 4 events	274	295	260	248	238
	1%	1%	0%	1%	1%
grade 5 events	678	794	671	807	795
	3%	3%	2%	3%	3%
grade 6 events	450	449	420	408	481
	2%	1%	1%	1%	2%
grade 7 events	19351	19752	23991	21472	20082
	86%	85%	88%	87%	86%

2.2 Compared Parameters

Parameter	Planned	Actual	Parameter	Planned	Actual
Instrument	ACIS	ACIS	Obspar format version number	6	6
Detector	ACIS-01236	ACIS-01236	Obspar file type	PREDICTED	ACTUAL
Grating	NONE	NONE	Obspar update status	NONE	UPDATED
Data mode	VFAINT	VFAINT	On-chip summing requested	N	N
Observation mode	POINTING	POINTING	Subarray requested	NONE	NONE
Pointing RA	218.706801	218.674269275934	Alternating exposures requested	N	N
Pointing Dec	33.864226	33.86832996501085	Primary exposure time	0.000000	3.1
Pointing Roll	140.783302	141.0100190850333			
SIM focus pos (mm)	-0.782348	-0.7809083437167272			
SIM defocus (mm)	0	0.001439871863259334			
SIM translation stage pos (mm)	-233.592463	-233.5874344608287			
SIM translation stage offset (mm)	0	-0.005018542100998502			
Observation start time	165749365.184000	165748989.26506			
Observation start date	2003-04-03T09:28:21	2003-04-03T09:23:09			
Observation end time	165754365.184000	165754499.15279			
Observation end date	2003-04-03T10:51:41	2003-04-03T10:54:59			
Read mode	TIMED	TIMED			

2.3 Aspect



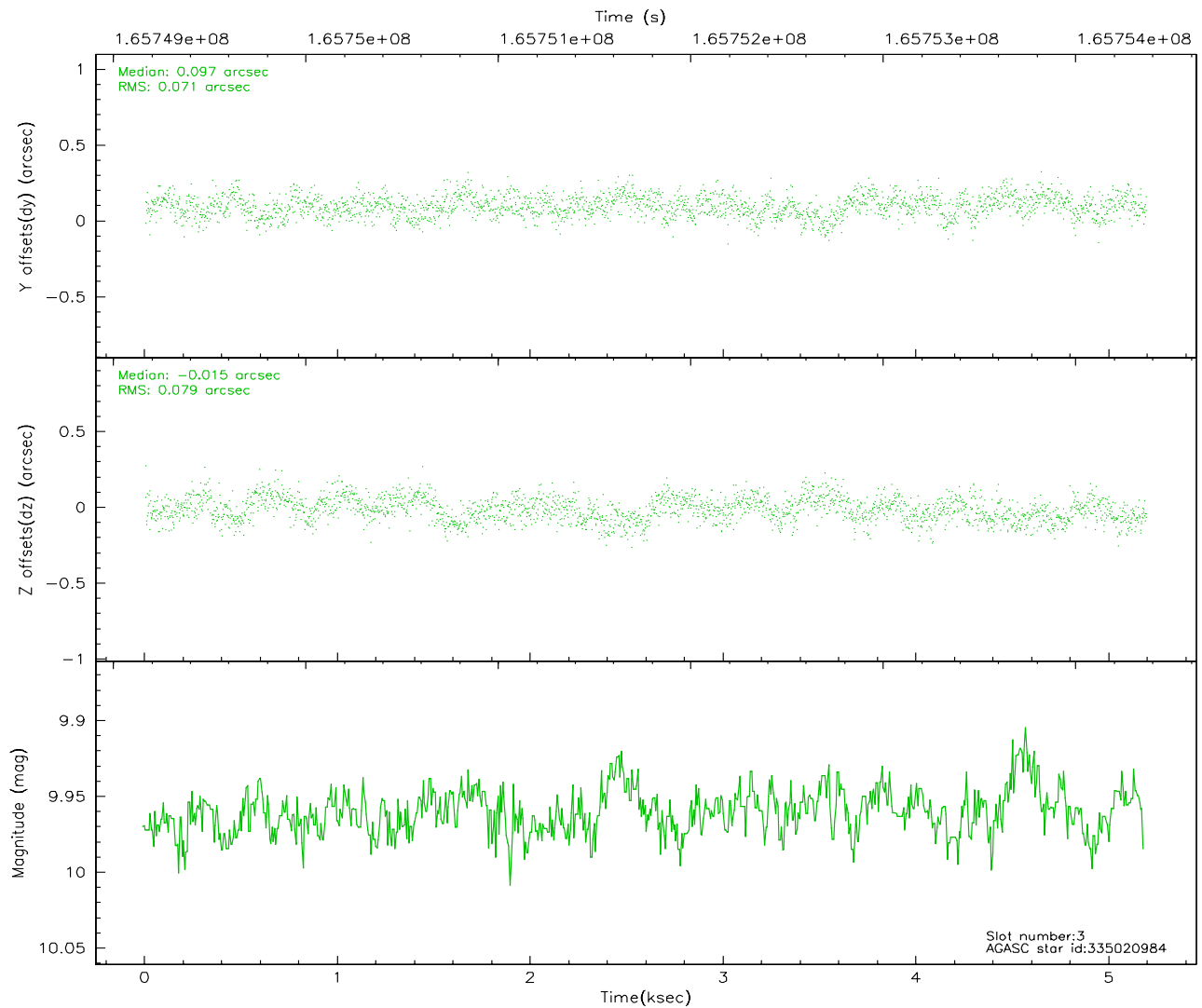
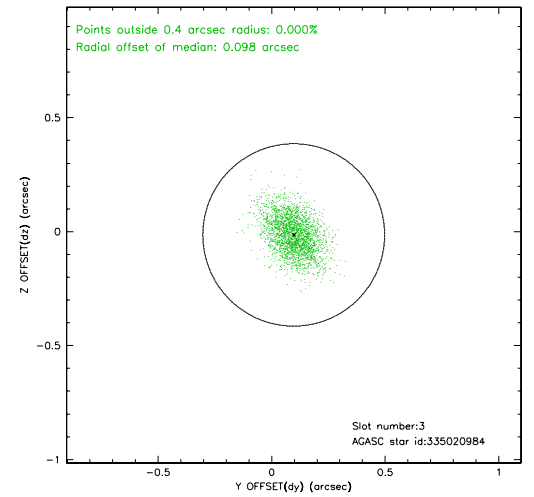
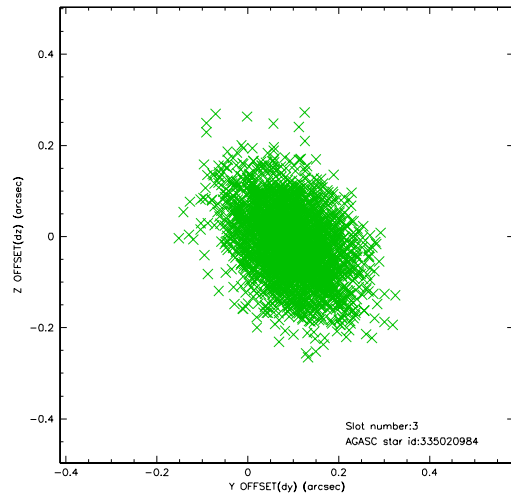


Slot Statistics

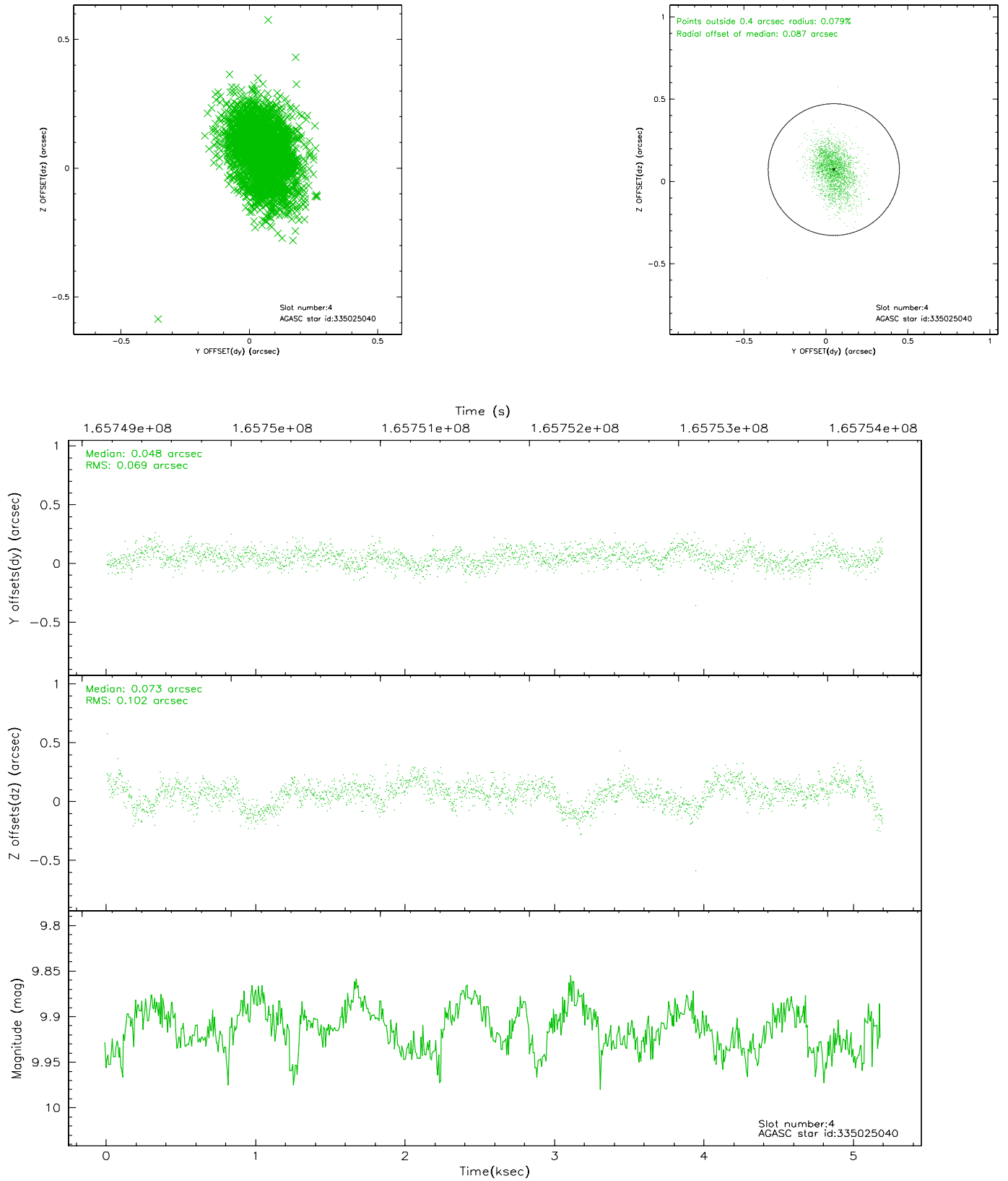
slot	status	id	mag	n_pts	med_dy	med_dz	dr1	dr2	ra	dec	mean_y	mean_z
0	FID	ACIS-I-1	7.25	1267	-0.005	0.020	0.006	0.010	0.000000	0.000000	937.31	-830.01
1	FID	ACIS-I-5	7.24	1267	-0.052	0.046	0.006	0.010	0.000000	0.000000	-1810.15	1066.98
2	FID	ACIS-I-6	7.26	1267	-0.034	0.004	0.007	0.011	0.000000	0.000000	401.62	1712.72
3	GUIDE	335020984	9.96	2532	0.097	-0.015	0.111	0.186	218.841668	33.815112	-422.96	-118.38
4	GUIDE	335025040	9.91	2525	0.048	0.073	0.127	0.218	218.601670	34.305240	1246.59	-1032.58
5	GUIDE	335152784	7.23	2533	-0.036	-0.063	0.072	0.119	219.280617	33.678221	-1751.23	-572.16
6	GUIDE	335155824	8.92	2529	-0.082	0.022	0.084	0.132	219.689900	34.035435	-1874.00	-2342.89
7	GUIDE	335157088	9.09	2531	-0.030	-0.012	0.077	0.124	219.274029	33.726909	-1625.63	-695.27

2.4 Star Slots

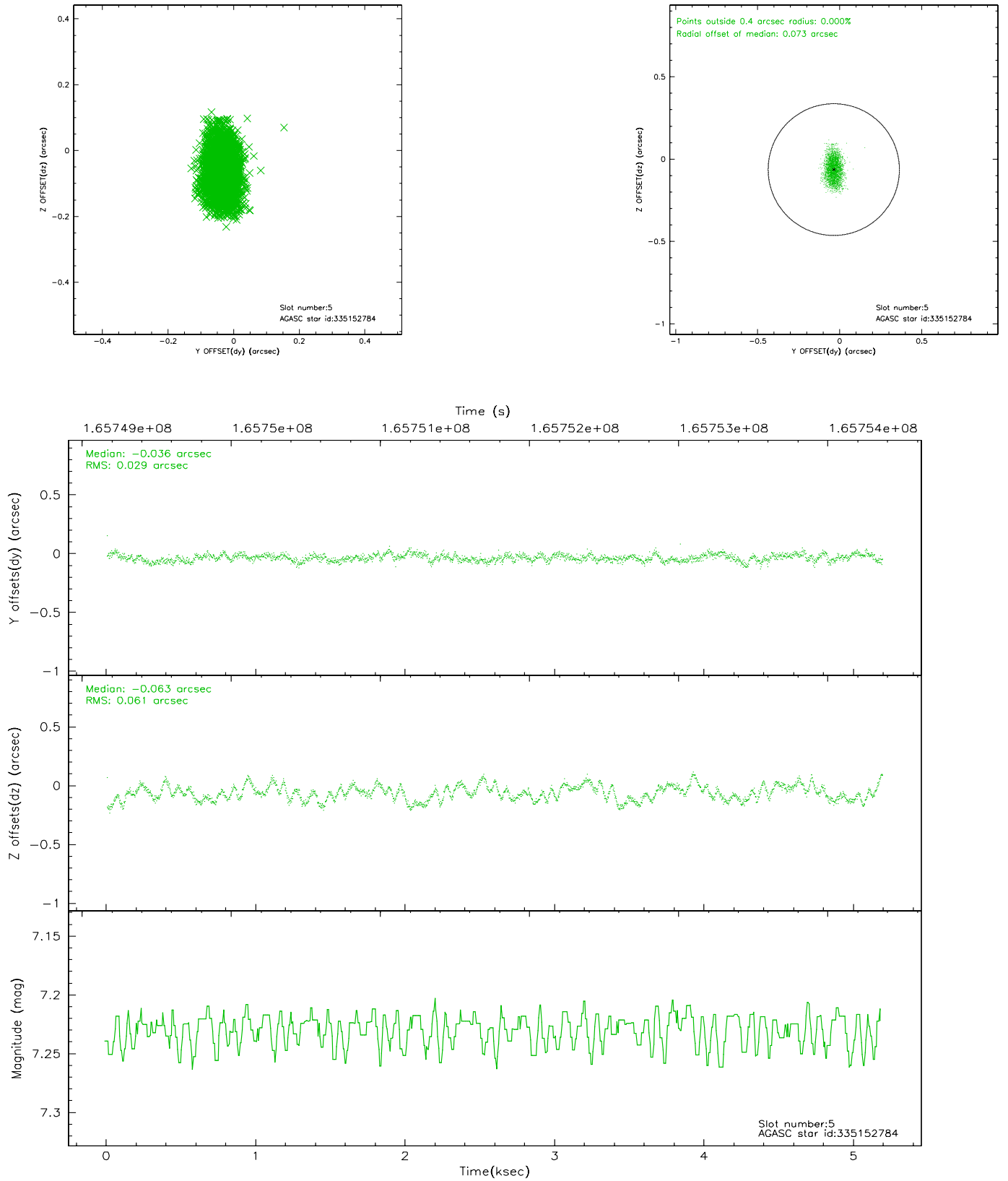
2.4.1 Slot 3



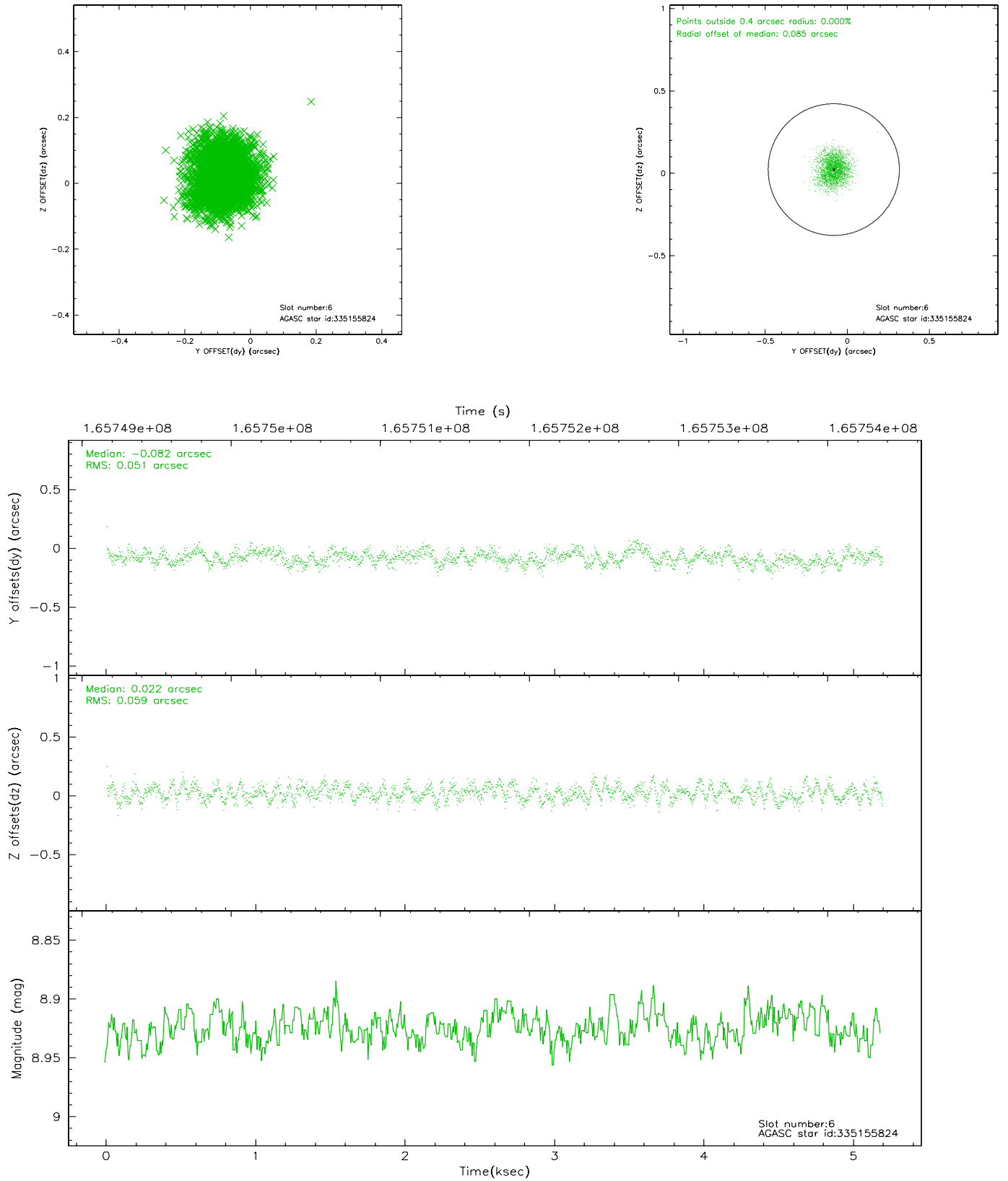
2.4.2 Slot 4



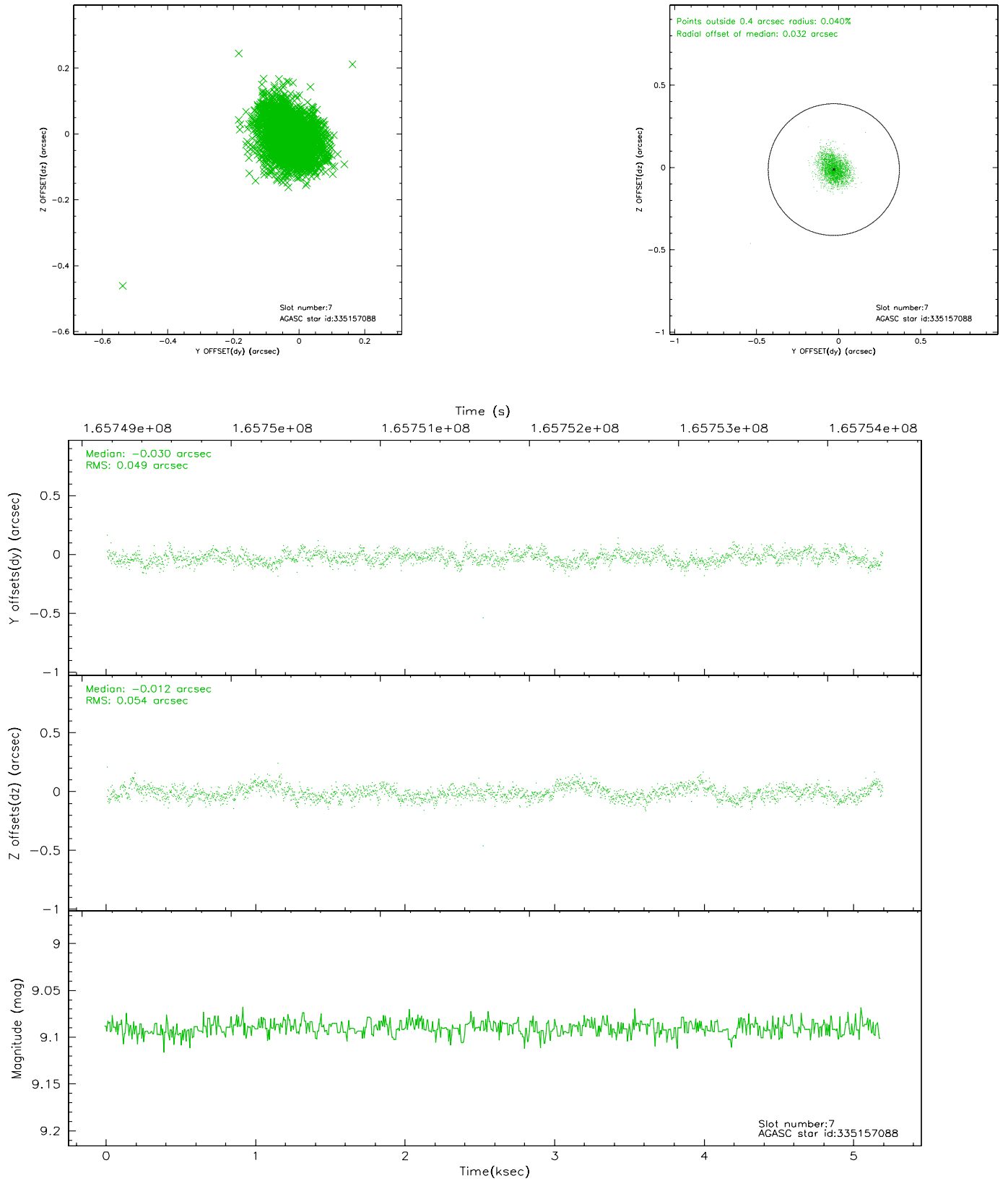
2.4.3 Slot 5



2.4.4 Slot 6

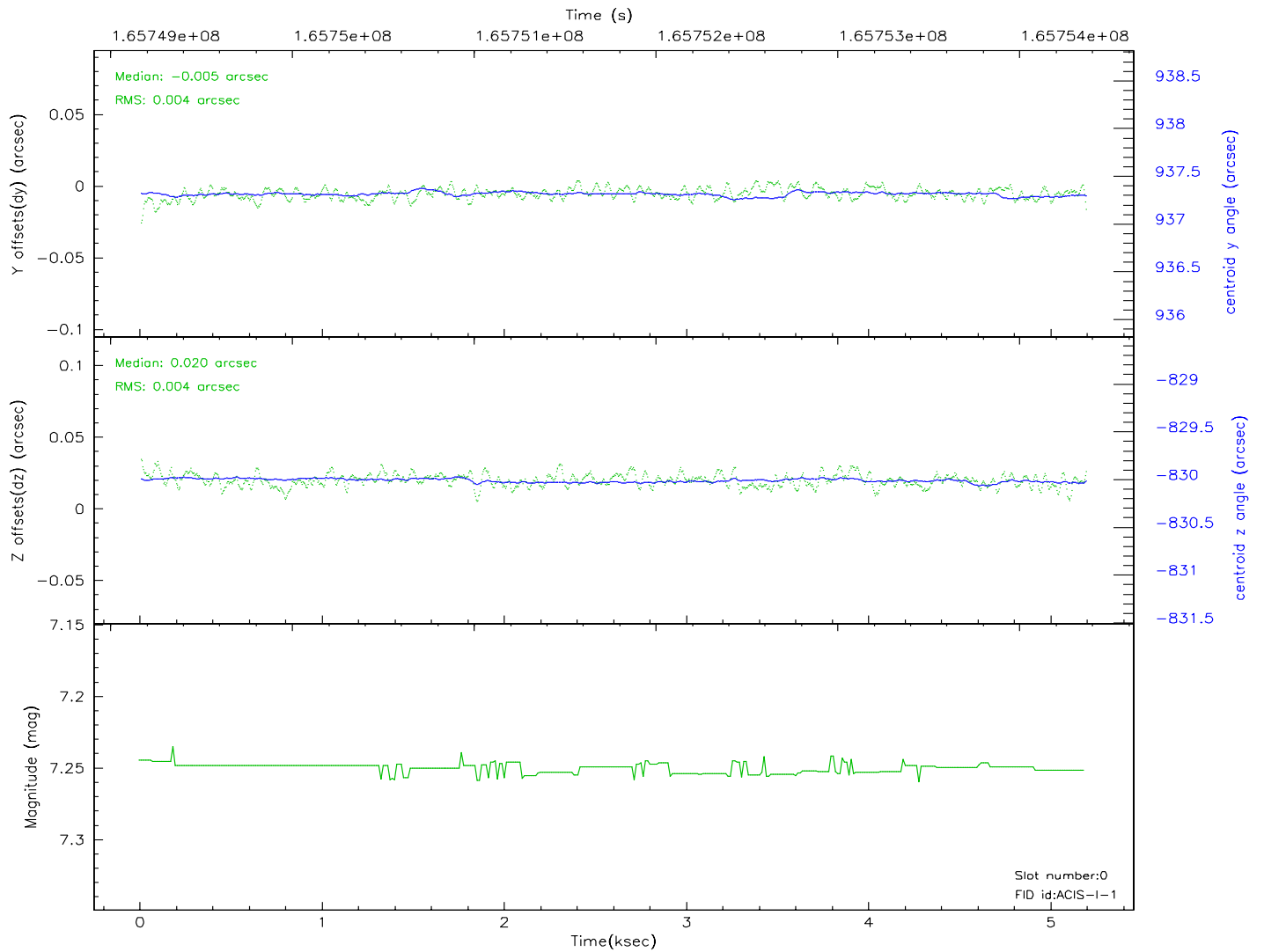
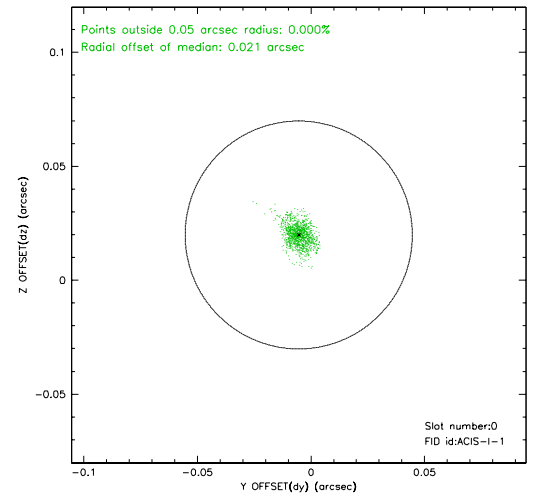
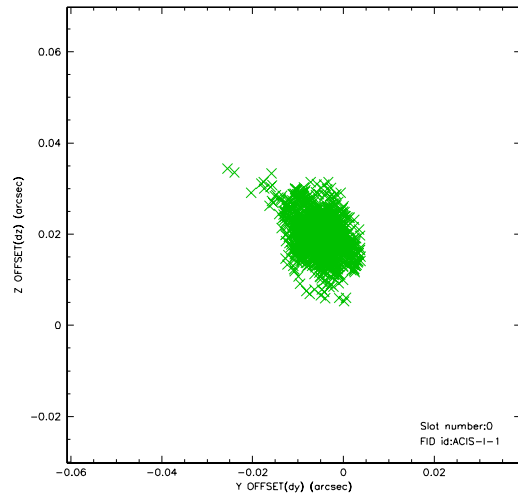


2.4.5 Slot 7

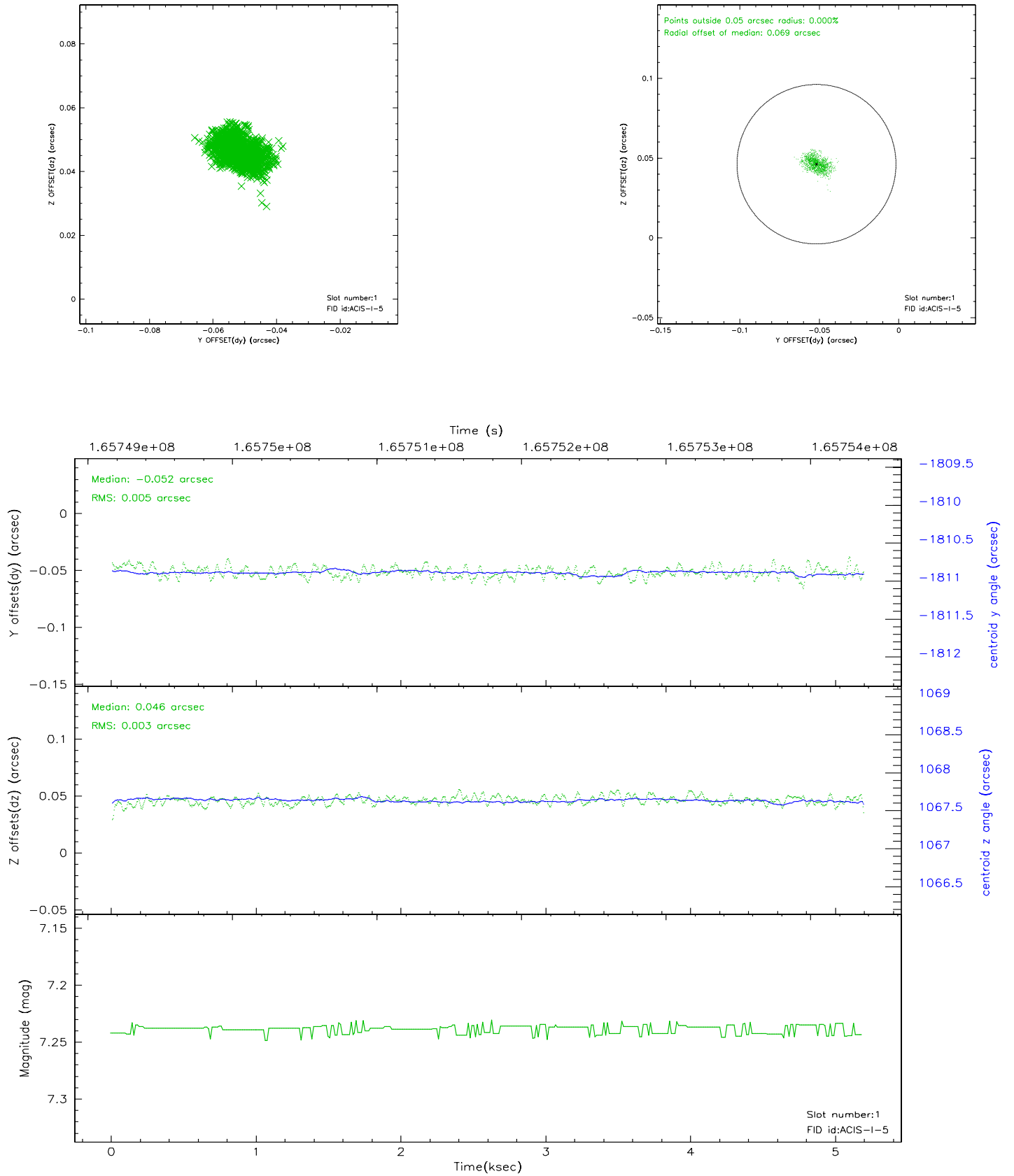


2.5 FID Slots

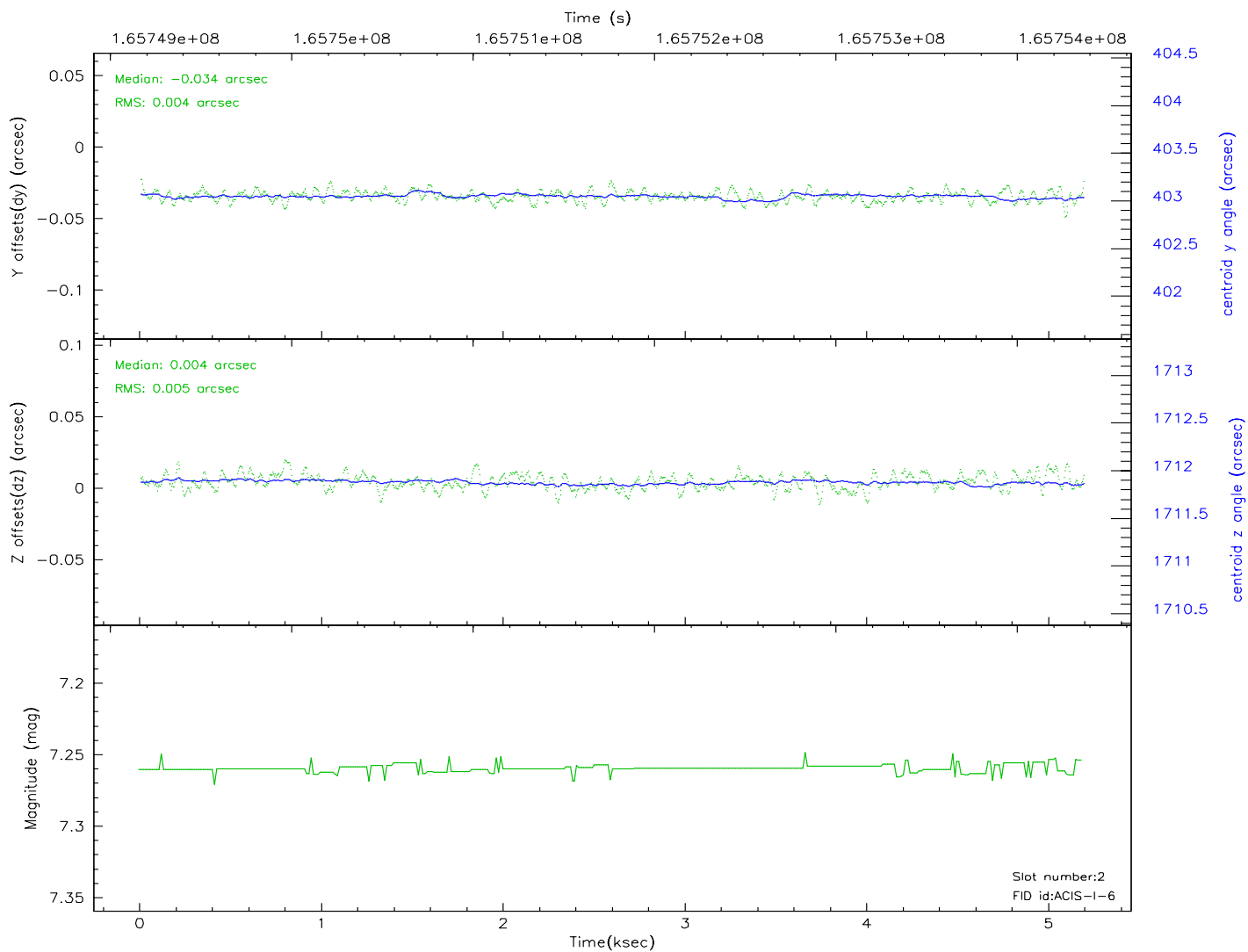
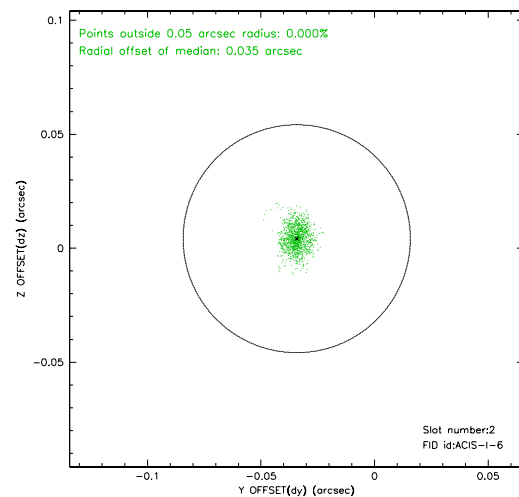
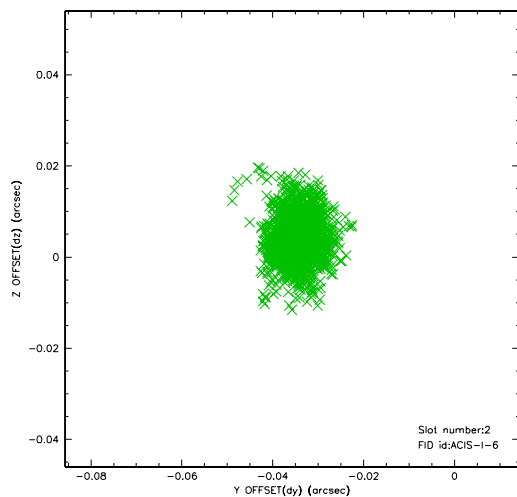
2.5.1 Slot 0



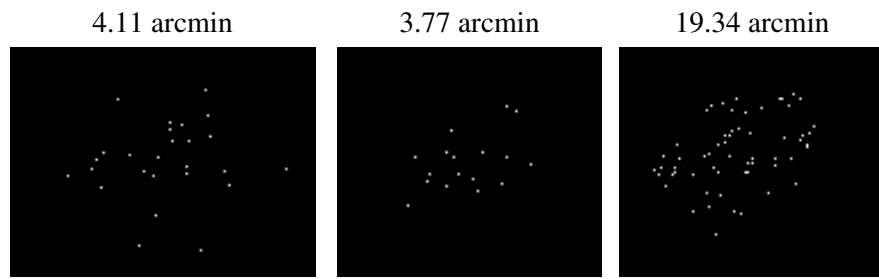
2.5.2 Slot 1



2.5.3 Slot 2



3 Point Sources



A Summary

A.1 Status

V&V Scientist	Jen Lauer
V&V Date (YYYY-MM-DD)	2006.07.30
V&V Edition	1
V&V Disposition and Status	OK
V&V Charge Time	4.777

A.2 Comments