

V&V Reference Report

L2 ASCDS Version : 8.4.5

Observation 4225 - L2 Version 4
Chandra X-Ray Center

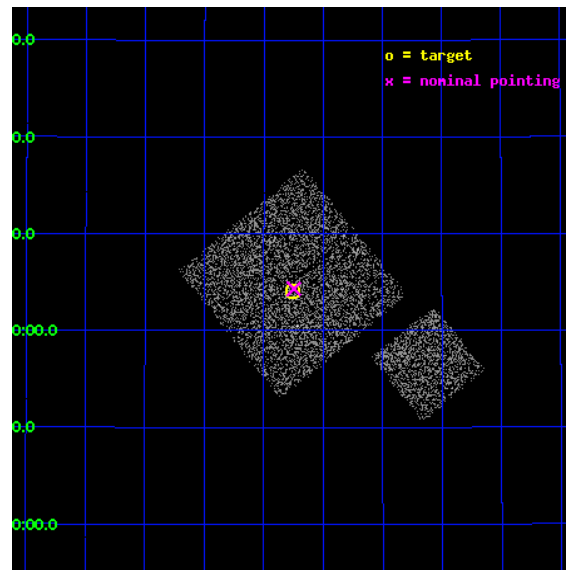
L2 Processing Date : Oct 24 2012

Contents

1	Front	2
2	OBI	3
2.1	OBI	3
2.1.1	Images	3
2.1.2	Bias	3
2.1.3	Parameters	4
2.1.4	Events	4
2.2	Compared Parameters	5
2.3	Aspect	6
2.4	Star Slots	9
2.4.1	Slot 3	9
2.4.2	Slot 4	10
2.4.3	Slot 5	11
2.4.4	Slot 6	12
2.4.5	Slot 7	13
2.5	FID Slots	14
2.5.1	Slot 0	14
2.5.2	Slot 1	15
2.5.3	Slot 2	16
A	Summary	17
A.1	Status	17
A.2	Comments	17

1 Front

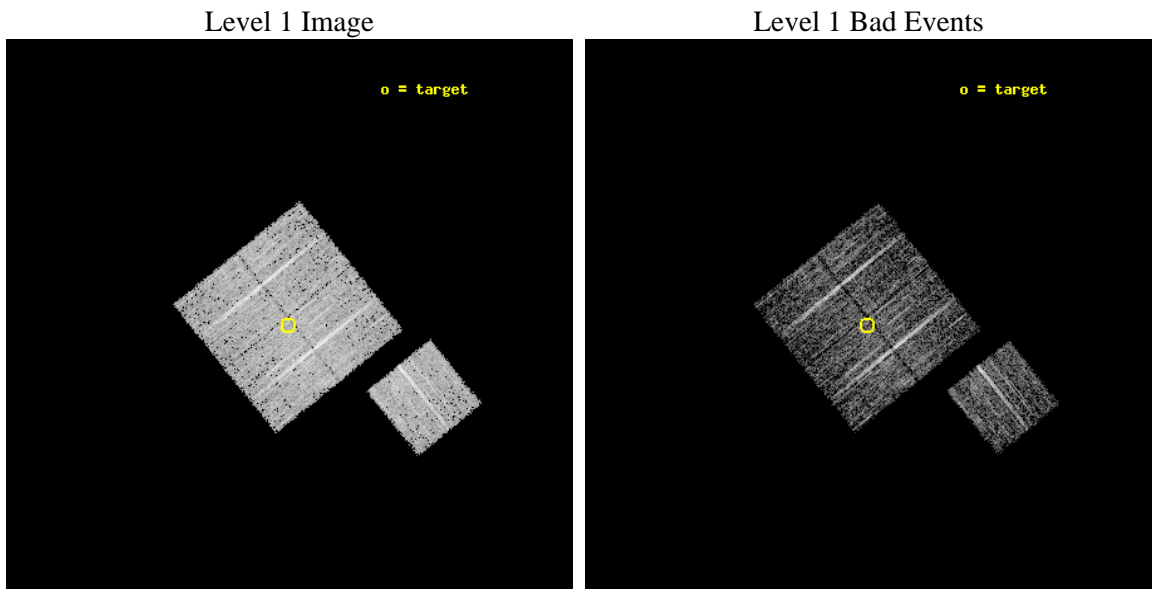
seq_num	900268	Sequence number
obs_id	4225	Observation id
title	A CHANDRA WIDE-FIELD SURVEY TO MAP THE COSMIC WEB AND INVESTIGATE THE EVOLUTION OF NUCLEAR ACCRETION	Proposal title
observer	Dr. Christine Jones	Principal investigator
object	SS24	Source name
dtcycle	0	
cycle	P	events from which exps? Prim/Second/Both
ra_targ	216.314346	Observer's specified target RA [deg]
dec_targ	34.068	Observer's specified target Dec [deg]
ra_nom	216.31160879858	Nominal RA [deg]
dec_nom	34.072022464093	Nominal Dec [deg]
roll_nom	141.01023911854	Nominal Roll [deg]
revision	4	Processing version of data
ontime	4776.5429839492	Sum of GTIs [s]
livetime	4714.1339334241	Livetime [s]
ontime0	4776.4198639393	Sum of GTIs [s]
ontime1	4776.4609039426	Sum of GTIs [s]
ontime2	4776.5019439459	Sum of GTIs [s]
ontime3	4776.5429839492	Sum of GTIs [s]
ontime6	4776.378823936	Sum of GTIs [s]
l2events	9735	Number of level 2 events



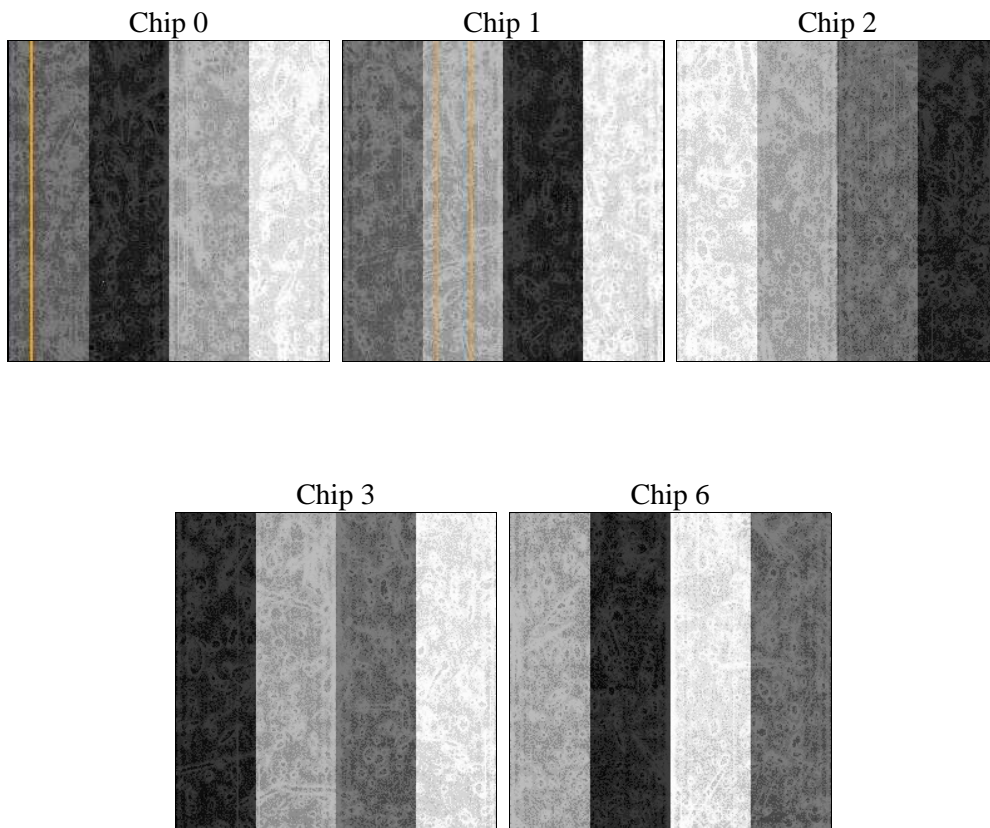
2 OBI

2.1 OBI

2.1.1 Images



2.1.2 Bias



2.1.3 Parameters

obi_num	0	Obi number	sched_exp_time	5000.000000	[s] Scheduled observation exposure time
ascdsver	8.4.5	Processing system revision	ontime	4776.5429839492	Sum of GTIs [s]
caldsver	4.5.2	 	ontime0	4776.4198639393	Sum of GTIs [s]
date	2012-10-24T20:55:29	Date and time of file creation	ontime1	4776.4609039426	Sum of GTIs [s]
revision	4	Processing version of data	ontime2	4776.5019439459	Sum of GTIs [s]
			ontime3	4776.5429839492	Sum of GTIs [s]
			ontime6	4776.378823936	Sum of GTIs [s]
			l1events	122407	Number of level 1 events

2.1.4 Events

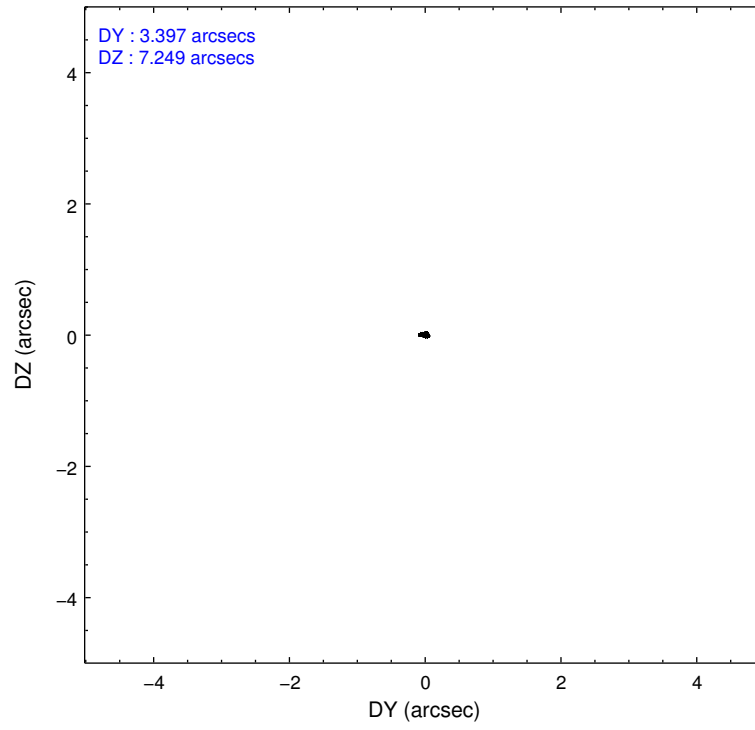
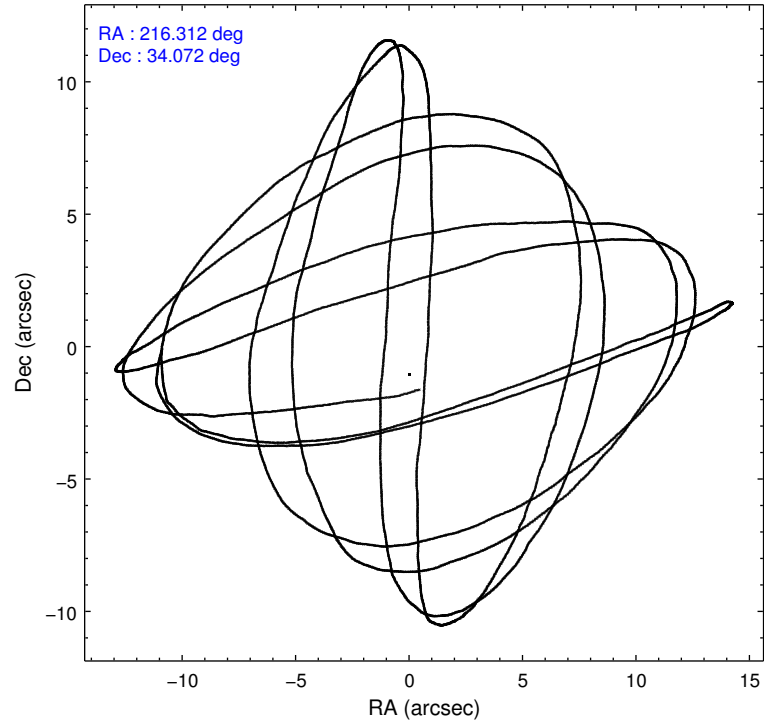
	ccd 0	ccd 1	ccd 2	ccd 3	ccd 6
level 1 events	23237	22978	25409	25863	24920
rejected events	20888	20508	23073	23583	22521
rejected %	89%	89%	90%	91%	90%

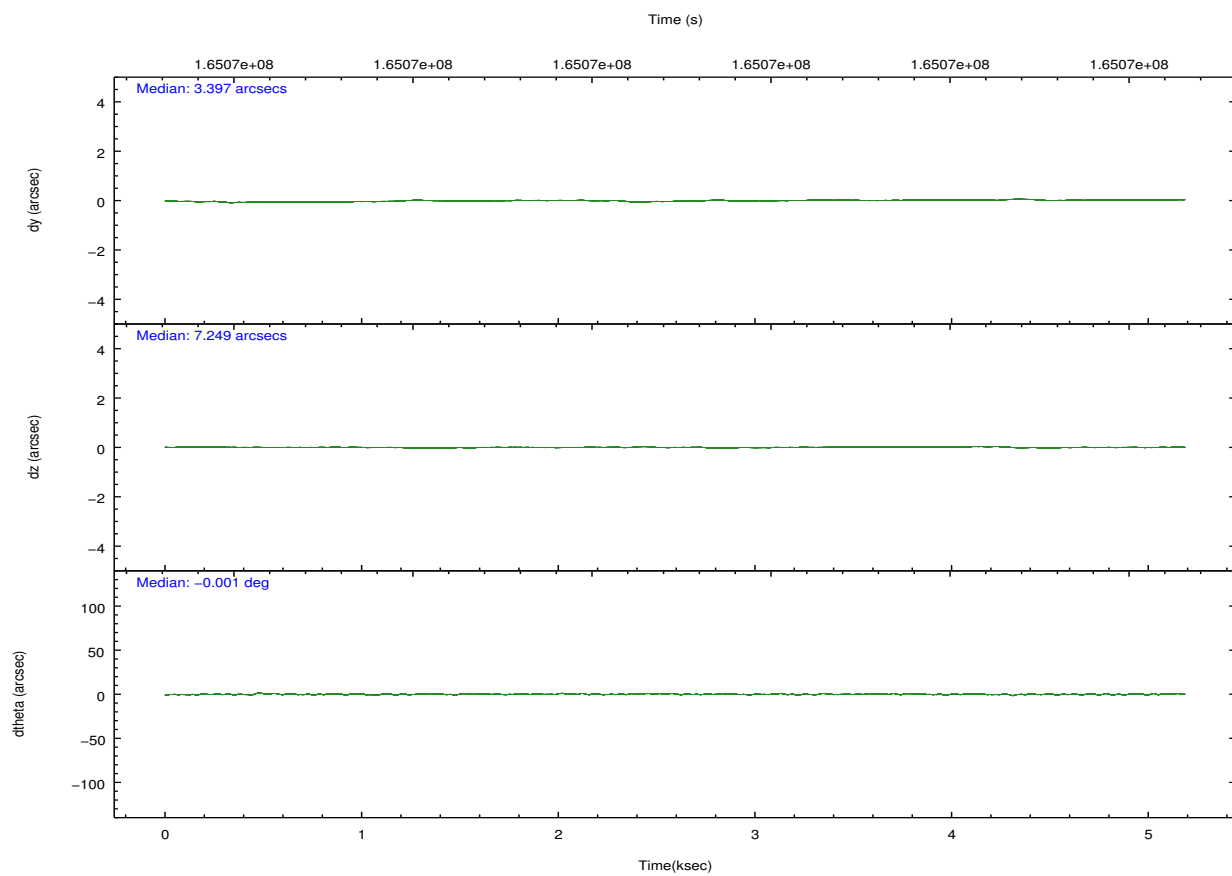
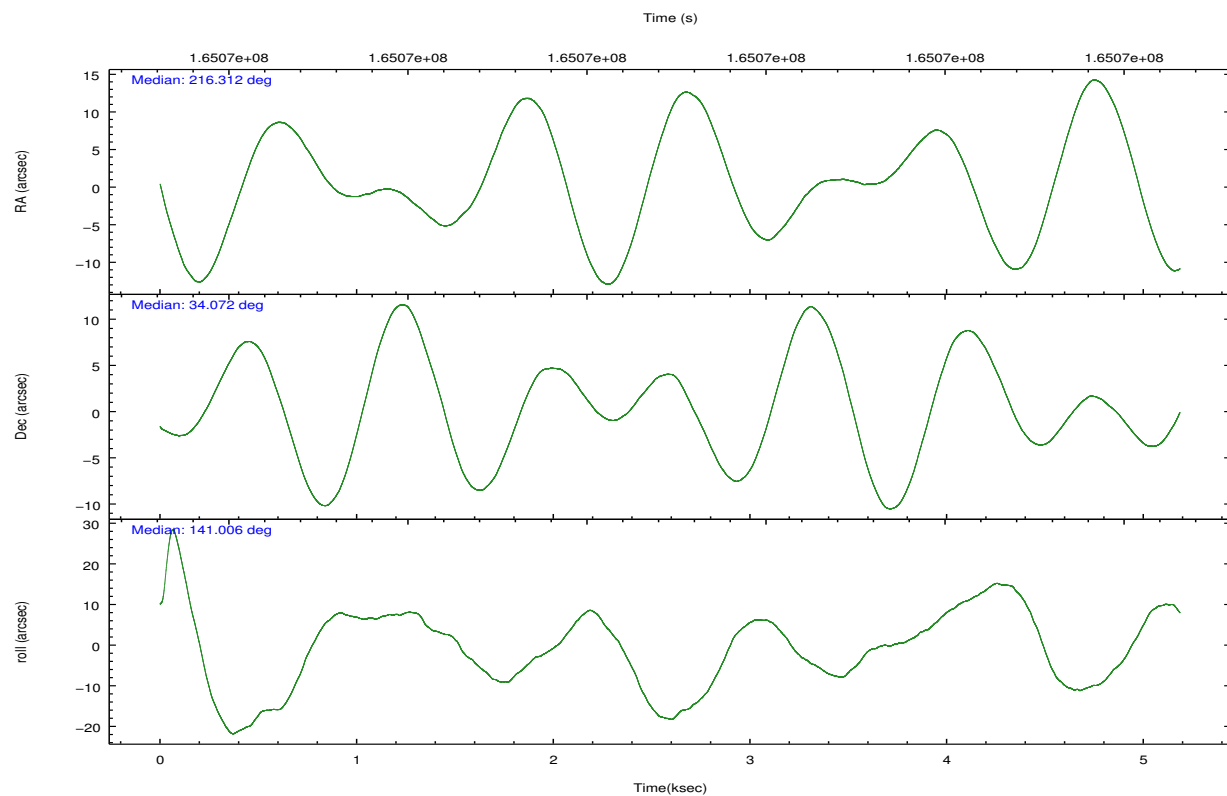
	ccd 0	ccd 1	ccd 2	ccd 3	ccd 6
grade 0 events	809	870	896	906	845
	3%	3%	3%	3%	3%
grade 1 events	12	18	12	9	6
	0%	0%	0%	0%	0%
grade 2 events	563	556	500	514	517
	2%	2%	1%	1%	2%
grade 3 events	276	292	259	251	257
	1%	1%	1%	0%	1%
grade 4 events	261	276	261	221	277
	1%	1%	1%	0%	1%
grade 5 events	707	807	642	835	759
	3%	3%	2%	3%	3%
grade 6 events	444	478	422	390	504
	1%	2%	1%	1%	2%
grade 7 events	20165	19681	22417	22737	21755
	86%	85%	88%	87%	87%

2.2 Compared Parameters

Parameter	Planned	Actual	Parameter	Planned	Actual
Instrument	ACIS	ACIS	Obspar format version number	7	7
Detector	ACIS-01236	ACIS-01236	Obspar file type	PREDICTED	ACTUAL
Grating	NONE	NONE	Obspar update status	NONE	UPDATED
Data mode	VFAINT	VFAINT	Number of optional ACIS chips dropped	0	0
Observation mode	POINTING	POINTING	On-chip summing requested	N	N
[deg] Pointing RA	216.344380	216.3116087985795	Subarray requested	NONE	NONE
[deg] Pointing Dec	34.067916	34.07202246409312	Alternating exposures requested	N	N
[deg] Pointing Roll	140.783177	141.0102391185359	[s] Primary exposure time	0.000000	3.1
[mm] SIM focus pos	-0.782348	-0.7809083437167272			
[mm] SIM defocus	0	0.001439871863259334			
[mm] SIM translation stage pos	-233.592463	-233.5874344608287			
[mm] SIM translation stage offset	0	-0.005018542100998502			
[s] Observation start time (MET)	165068059.184000	165067683.52383			
Observation start date	2003-03-26T12:13:15	2003-03-26T12:08:03			
[s] Observation end time (MET)	165073059.184000	165073193.41156			
Observation end date	2003-03-26T13:36:35	2003-03-26T13:39:53			
Read mode	TIMED	TIMED			

2.3 Aspect



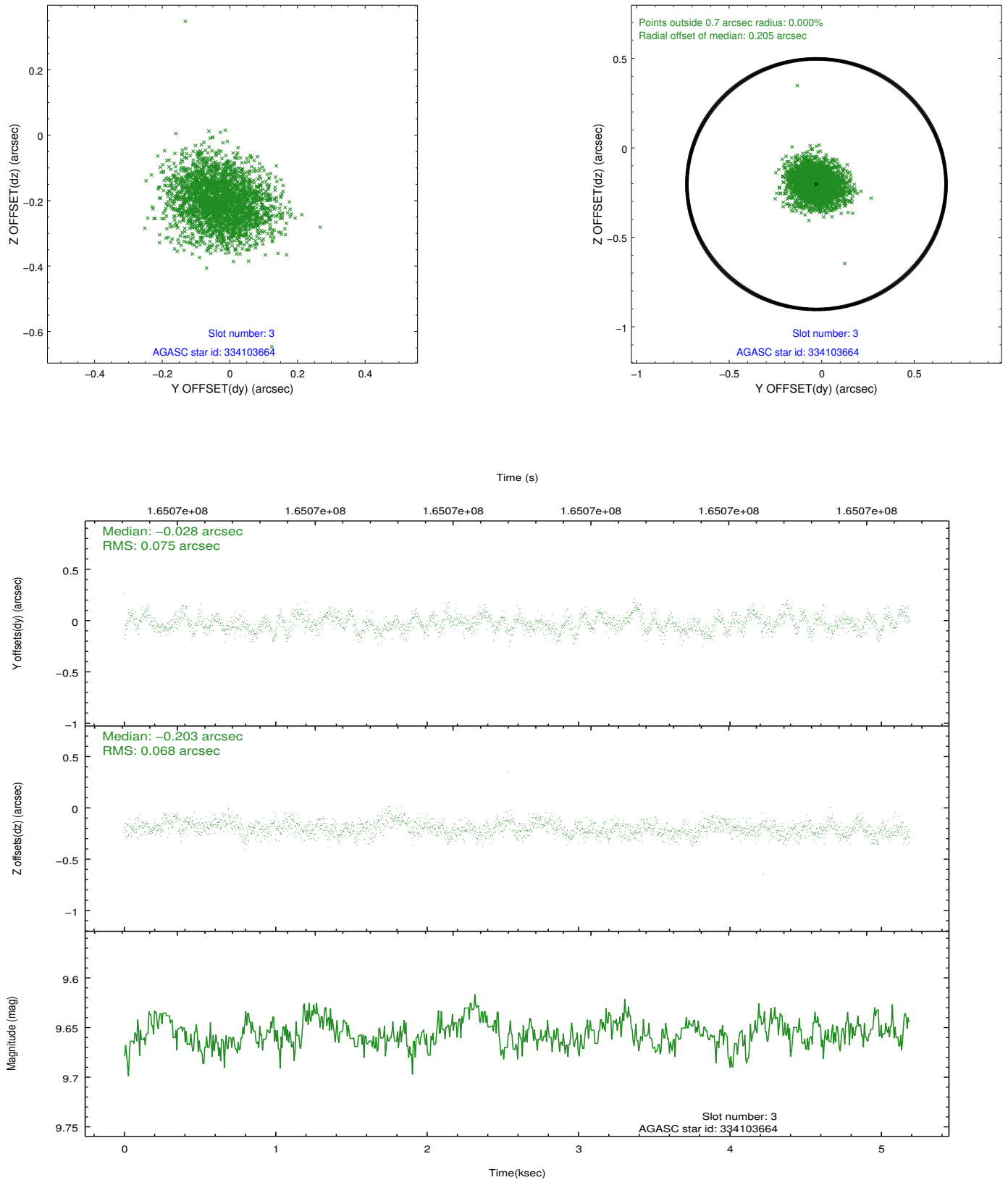


Slot Statistics

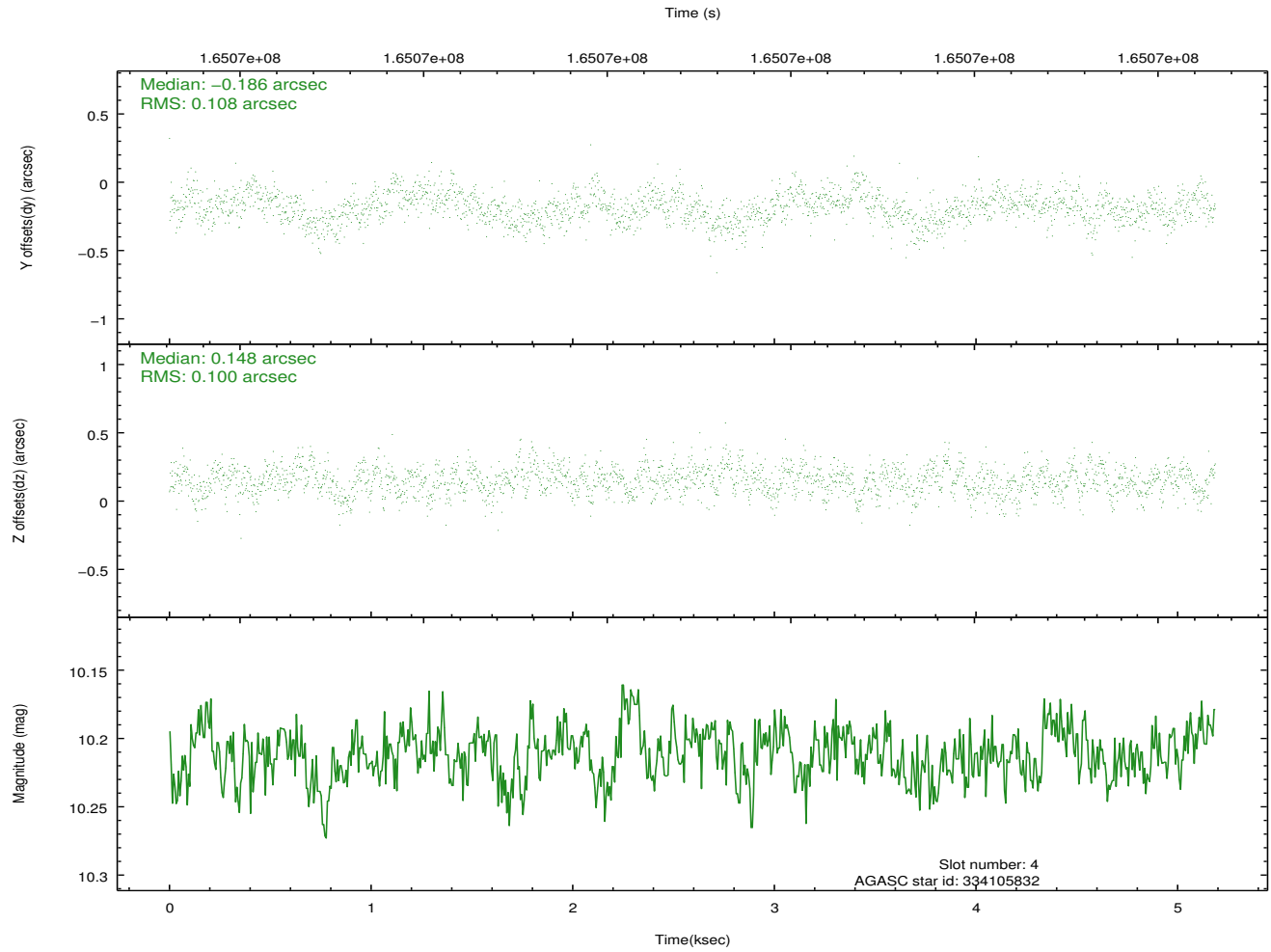
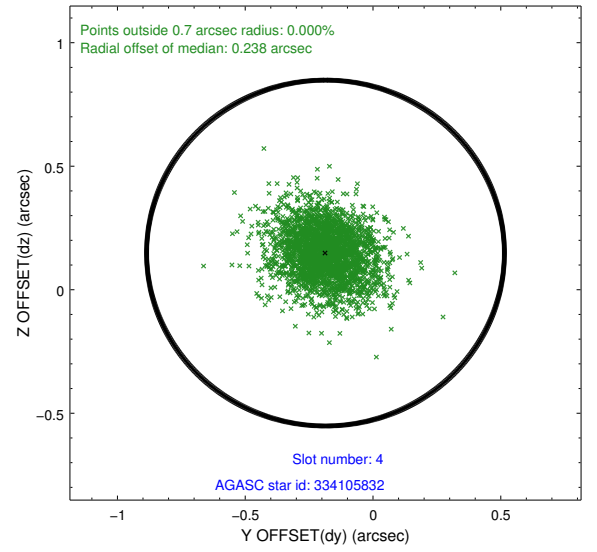
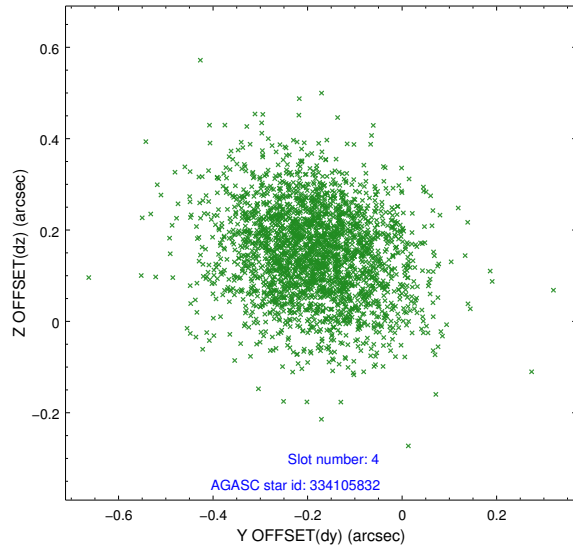
slot	status	id	mag	n_pts	med_dy	med_dz	dr1	dr2	ra	dec	mean_y	mean_z
0	FID	ACIS-I-1	7.25	1265	0.020	0.016	0.011	0.020	0.000000	0.000000	936.40	-830.65
1	FID	ACIS-I-5	7.24	1265	-0.094	0.062	0.010	0.018	0.000000	0.000000	-1811.14	1066.35
2	FID	ACIS-I-6	7.26	1265	-0.017	-0.007	0.010	0.019	0.000000	0.000000	400.68	1712.08
3	GUIDE	334103664	9.66	2530	-0.028	-0.203	0.108	0.171	215.408944	33.871296	1726.88	2306.14
4	GUIDE	334105832	10.21	2525	-0.186	0.148	0.153	0.259	215.847735	34.556918	2256.84	-434.63
5	GUIDE	335021128	9.36	2526	0.122	0.161	0.084	0.137	216.159551	34.422539	1233.99	-642.53
6	GUIDE	335024096	10.61	2483	-0.117	-0.050	0.169	0.267	216.160719	34.374830	1122.37	-511.82
7	GUIDE	335027408	10.40	2526	0.200	-0.048	0.218	0.378	216.490923	33.575832	-1459.57	1093.97

2.4 Star Slots

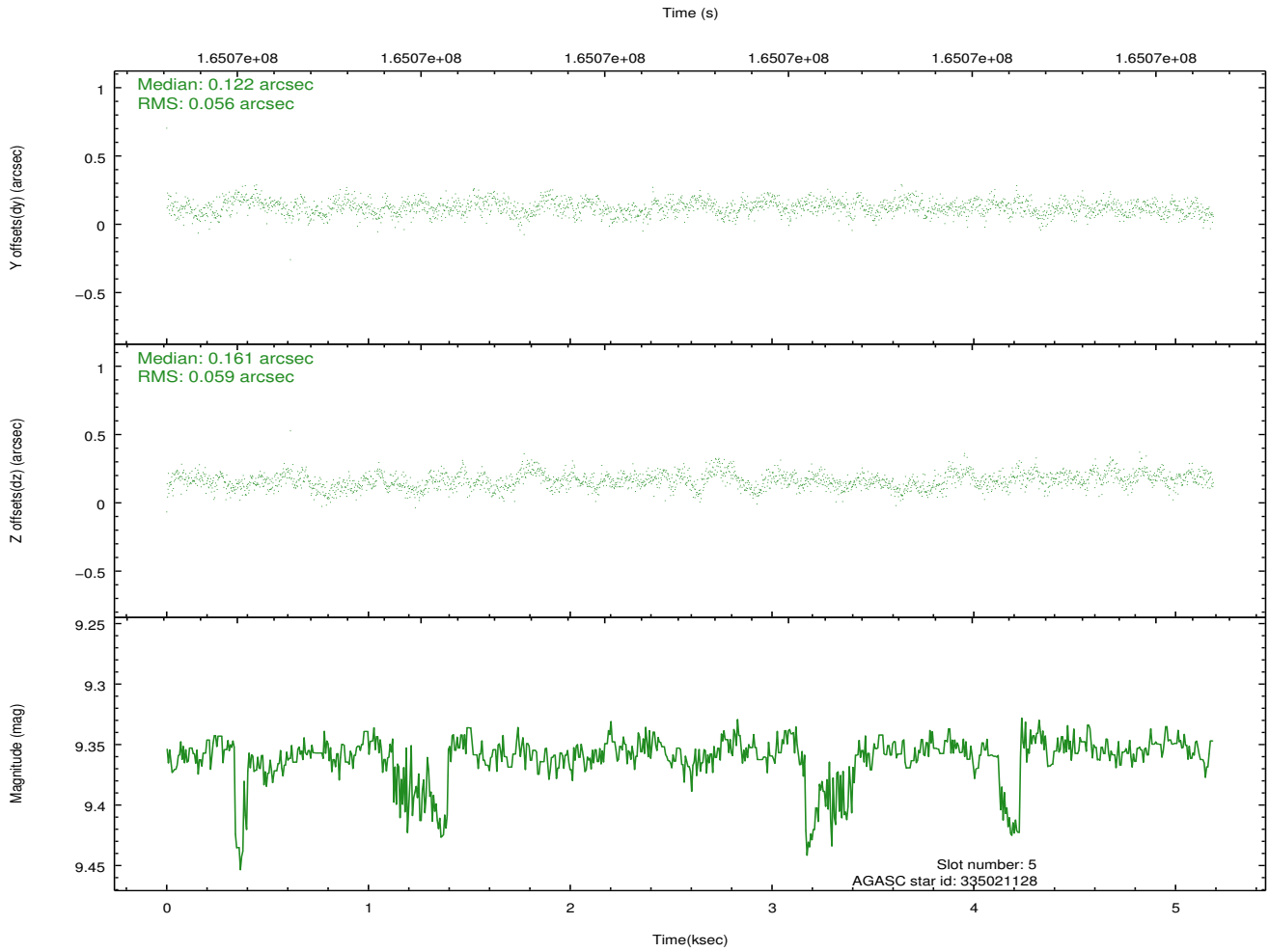
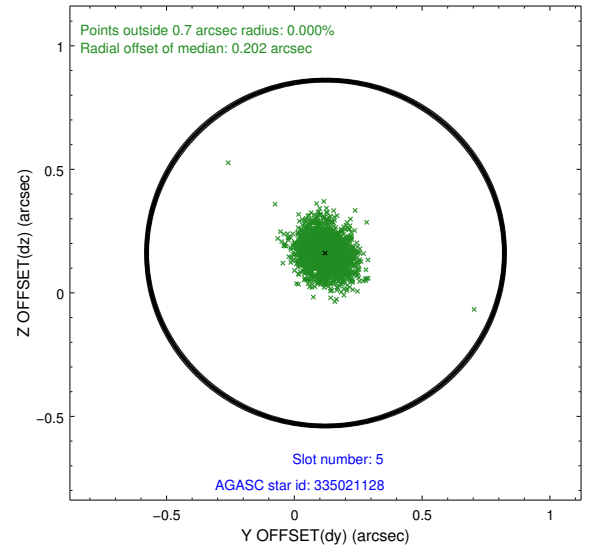
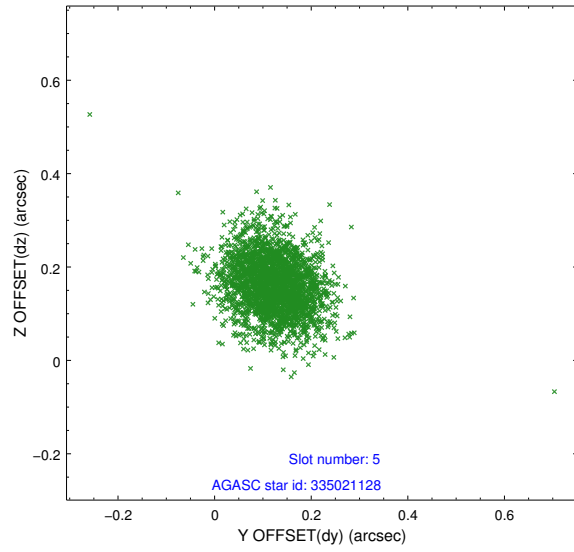
2.4.1 Slot 3



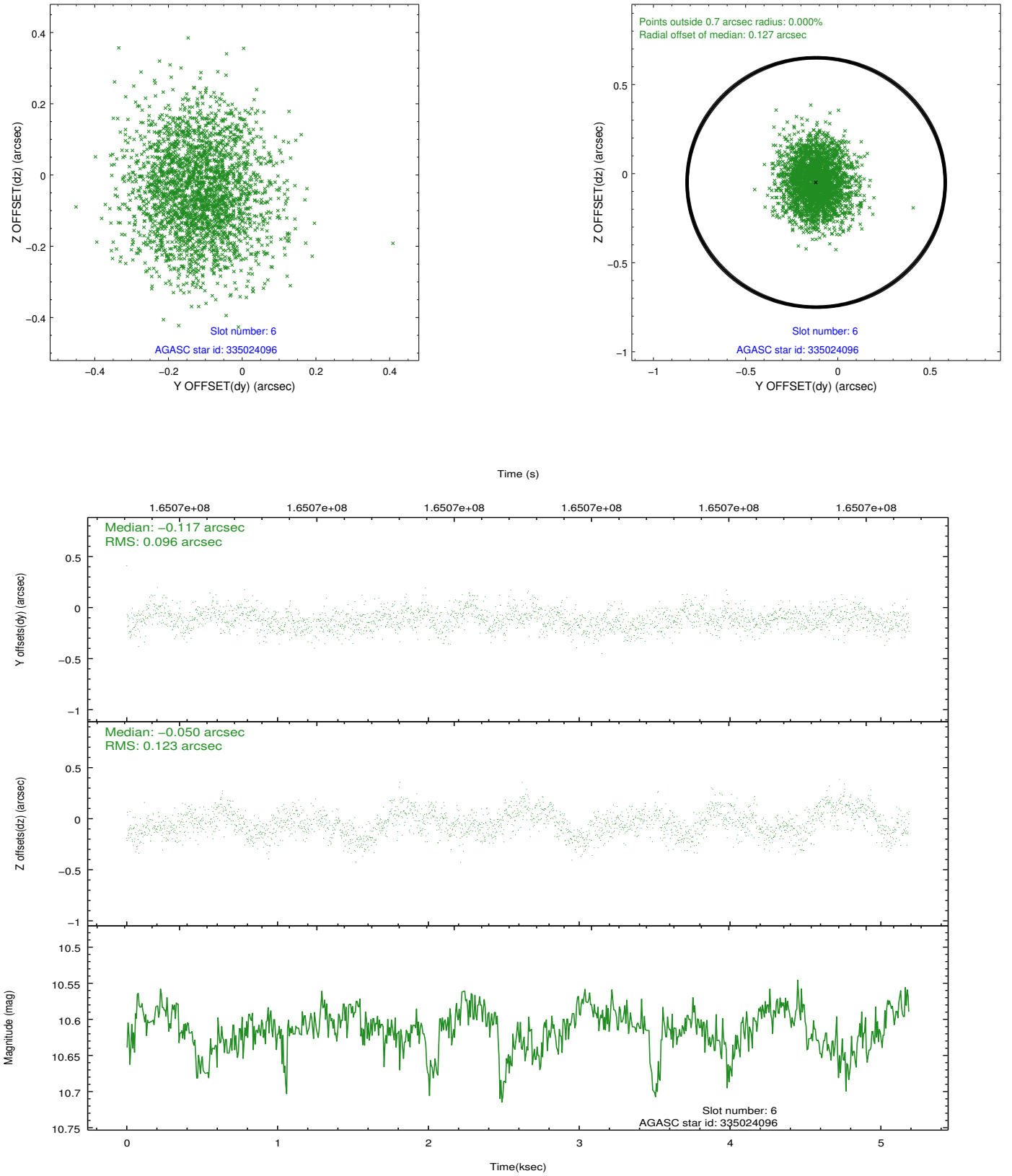
2.4.2 Slot 4



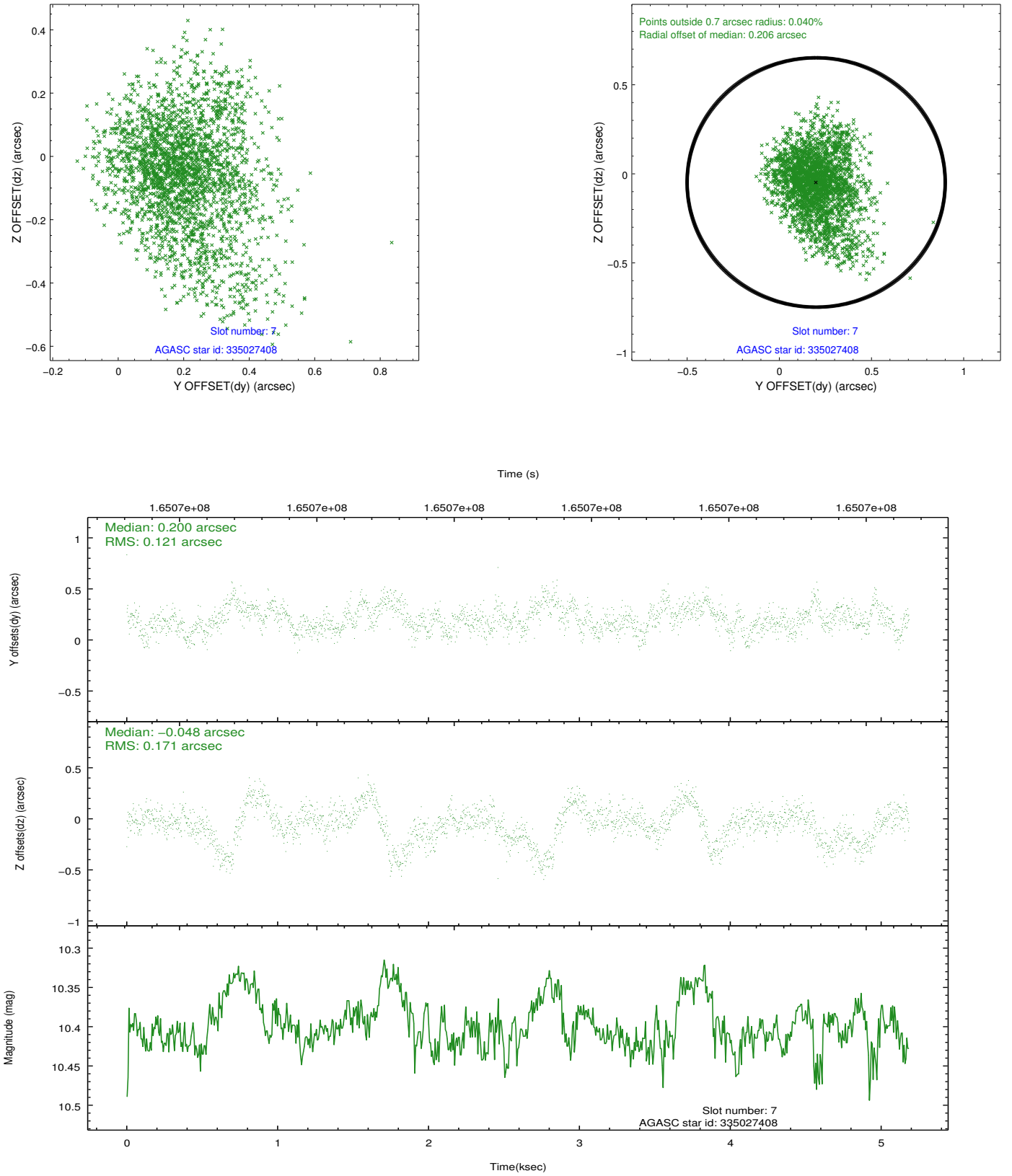
2.4.3 Slot 5



2.4.4 Slot 6

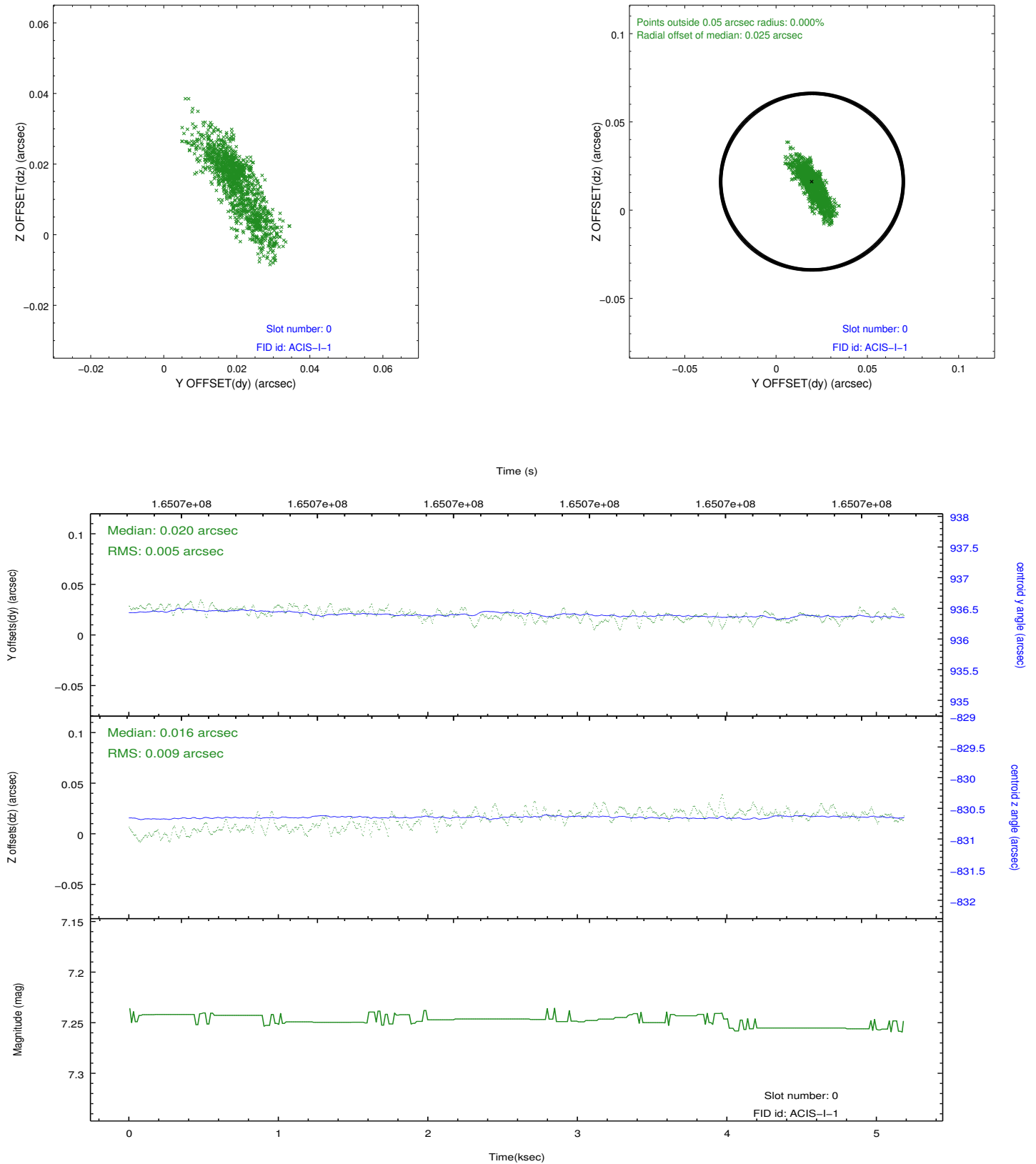


2.4.5 Slot 7

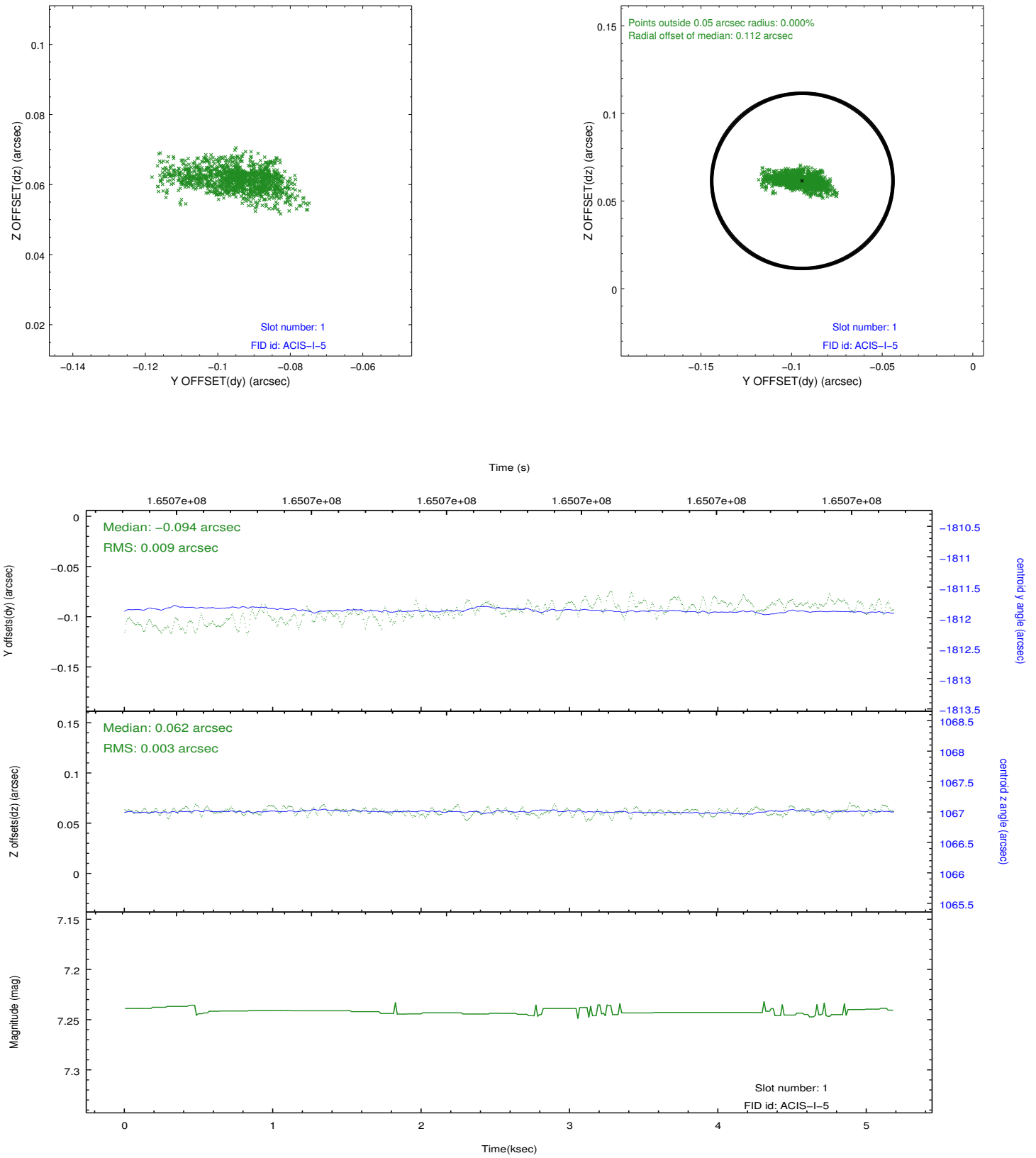


2.5 FID Slots

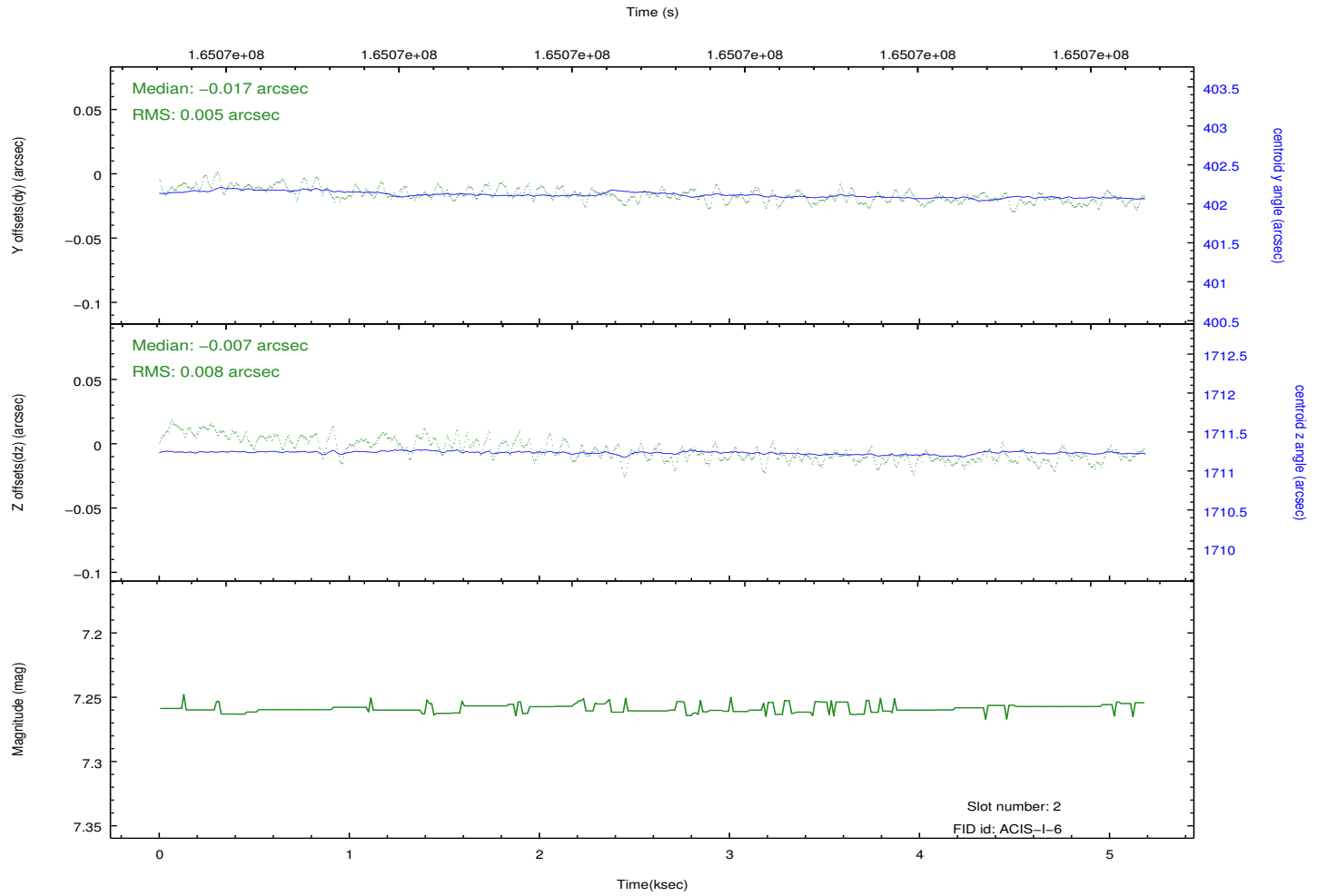
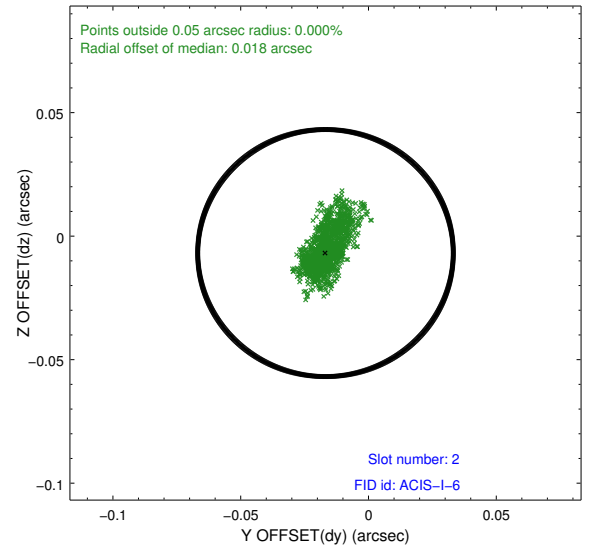
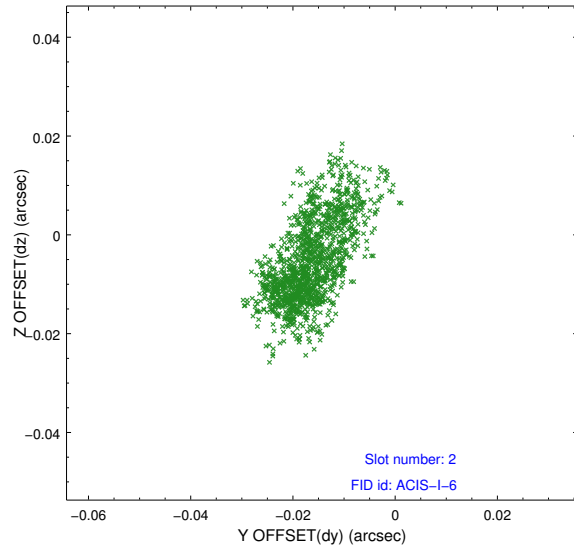
2.5.1 Slot 0



2.5.2 Slot 1



2.5.3 Slot 2



A Summary

A.1 Status

V&V Scientist	Jen Lauer
V&V Date (YYYY-MM-DD)	2012.11.08
V&V Edition	1
V&V Disposition and Status	OK
V&V Charge Time	4.777

A.2 Comments