

V&V Reference Report

L2 ASCDS Version : 8.4.5

Observation 3658 - L2 Version 4
Chandra X-Ray Center

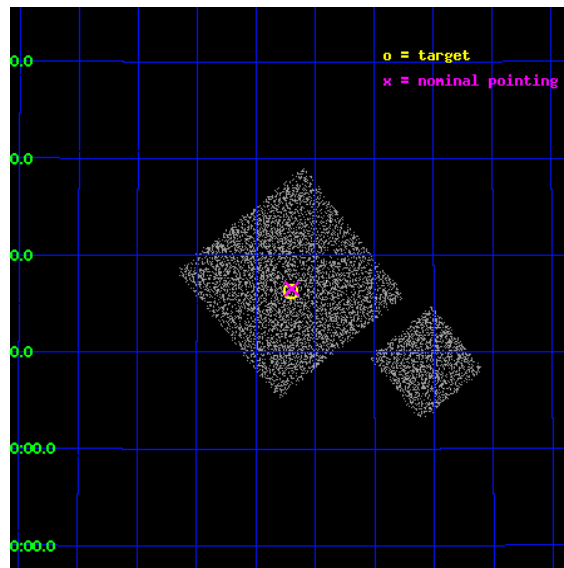
L2 Processing Date : Oct 26 2012

Contents

1	Front	2
2	OBI	3
2.1	OBI	3
2.1.1	Images	3
2.1.2	Bias	3
2.1.3	Parameters	4
2.1.4	Events	4
2.2	Compared Parameters	5
2.3	Aspect	6
2.4	Star Slots	9
2.4.1	Slot 3	9
2.4.2	Slot 4	10
2.4.3	Slot 5	11
2.4.4	Slot 7	12
2.5	FID Slots	13
2.5.1	Slot 0	13
2.5.2	Slot 1	14
2.5.3	Slot 2	15
A	Summary	16
A.1	Status	16
A.2	Comments	16

1 Front

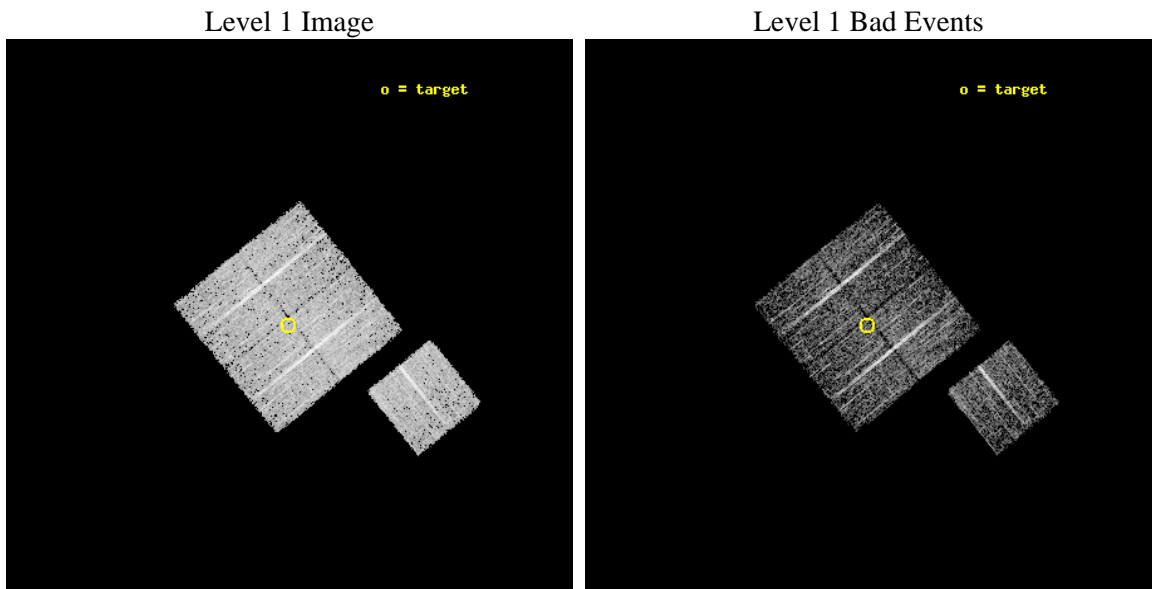
seq_num	900258	Sequence number
obs_id	3658	Observation id
title	CHANDRA LARGE SCALE SURVEY OF THE NOAO BOOTES DEEP FIELD	Proposal
observer	Dr. Stephen Murray	Principal investigator
object	NOAO FIELD F44	Source name
dtcycle	0	
cycle	P	events from which exps? Prim/Second/Both
ra_targ	218.676831	Observer's specified target RA [deg]
dec_targ	34.271694	Observer's specified target Dec [deg]
ra_nom	218.67417105256	Nominal RA [deg]
dec_nom	34.275867822466	Nominal Dec [deg]
roll_nom	141.01011079937	Nominal Roll [deg]
revision	4	Processing version of data
ontime	4776.409496665	Sum of GTIs [s]
livetime	4714.0021902496	Livetime [s]
ontime0	4776.2863766551	Sum of GTIs [s]
ontime1	4776.3274166584	Sum of GTIs [s]
ontime2	4773.2274665236	Sum of GTIs [s]
ontime3	4776.409496665	Sum of GTIs [s]
ontime6	4776.2453366518	Sum of GTIs [s]
l2events	9409	Number of level 2 events



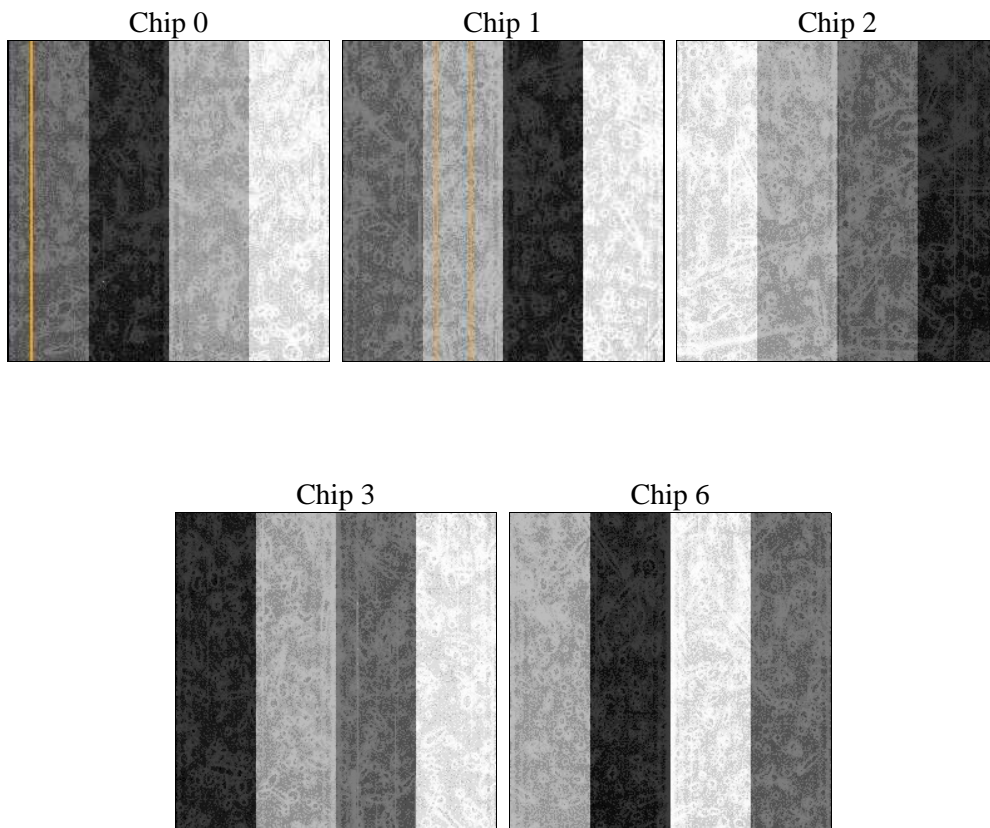
2 OBI

2.1 OBI

2.1.1 Images



2.1.2 Bias



2.1.3 Parameters

obi_num	1	Obi number	sched_exp_time	5000.000000	[s] Scheduled observation exposure time
ascdsver	8.4.5	Processing system revision	ontime	4776.409496665	Sum of GTIs [s]
caldsver	4.5.2	 	ontime0	4776.2863766551	Sum of GTIs [s]
date	2012-10-26T13:18:56	Date and time of file creation	ontime1	4776.3274166584	Sum of GTIs [s]
revision	4	Processing version of data	ontime2	4773.2274665236	Sum of GTIs [s]
			ontime3	4776.409496665	Sum of GTIs [s]
			ontime6	4776.2453366518	Sum of GTIs [s]
			l1events	118583	Number of level 1 events

2.1.4 Events

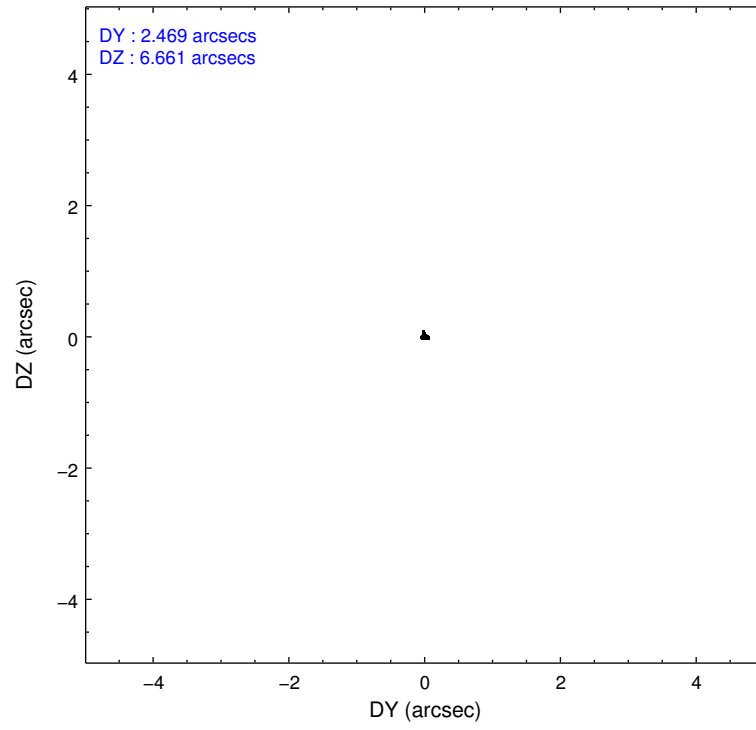
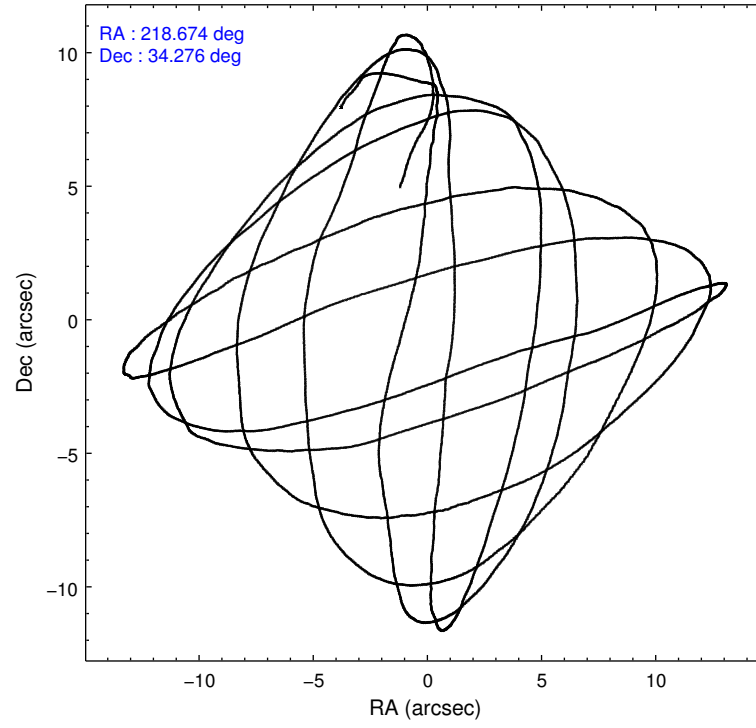
	ccd 0	ccd 1	ccd 2	ccd 3	ccd 6
level 1 events	22338	22863	25765	23867	23750
rejected events	20046	20386	23390	21728	21394
rejected %	89%	89%	90%	91%	90%

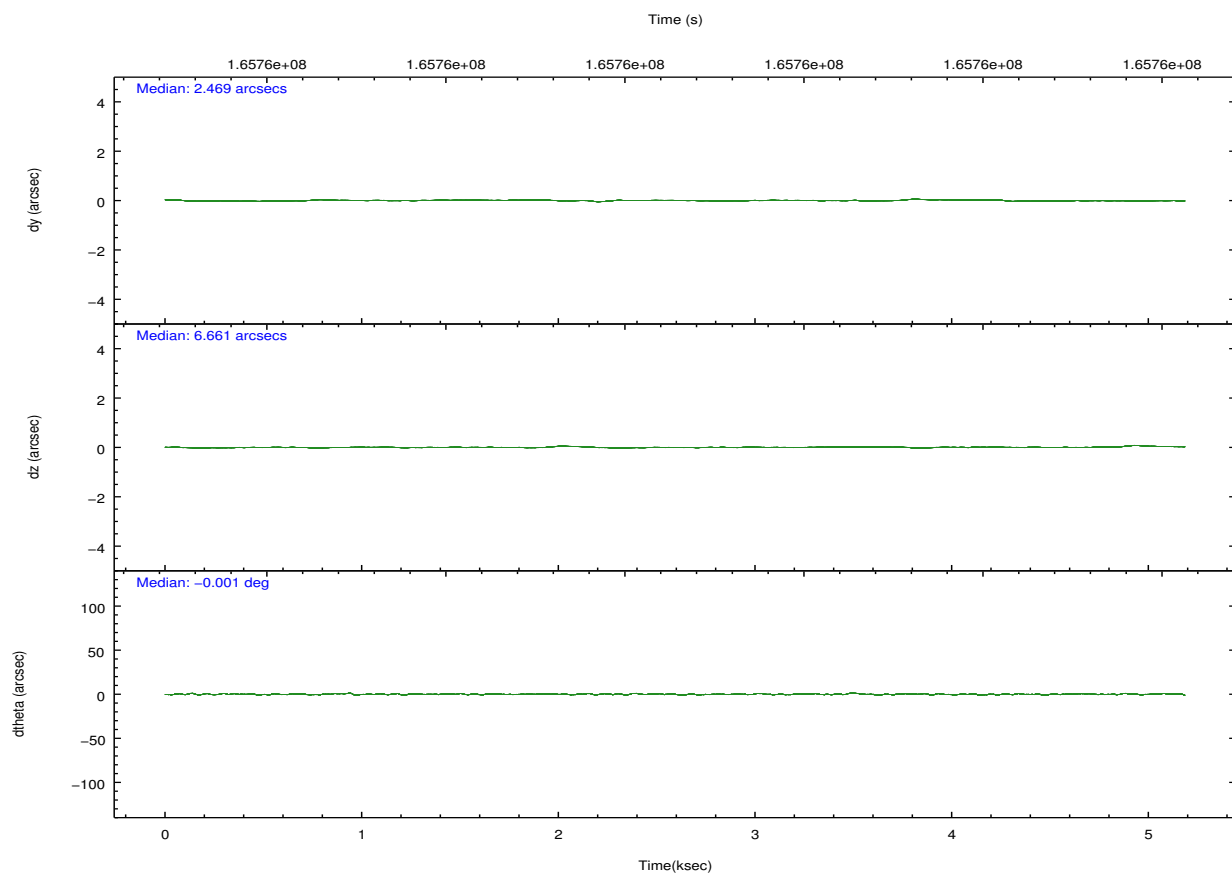
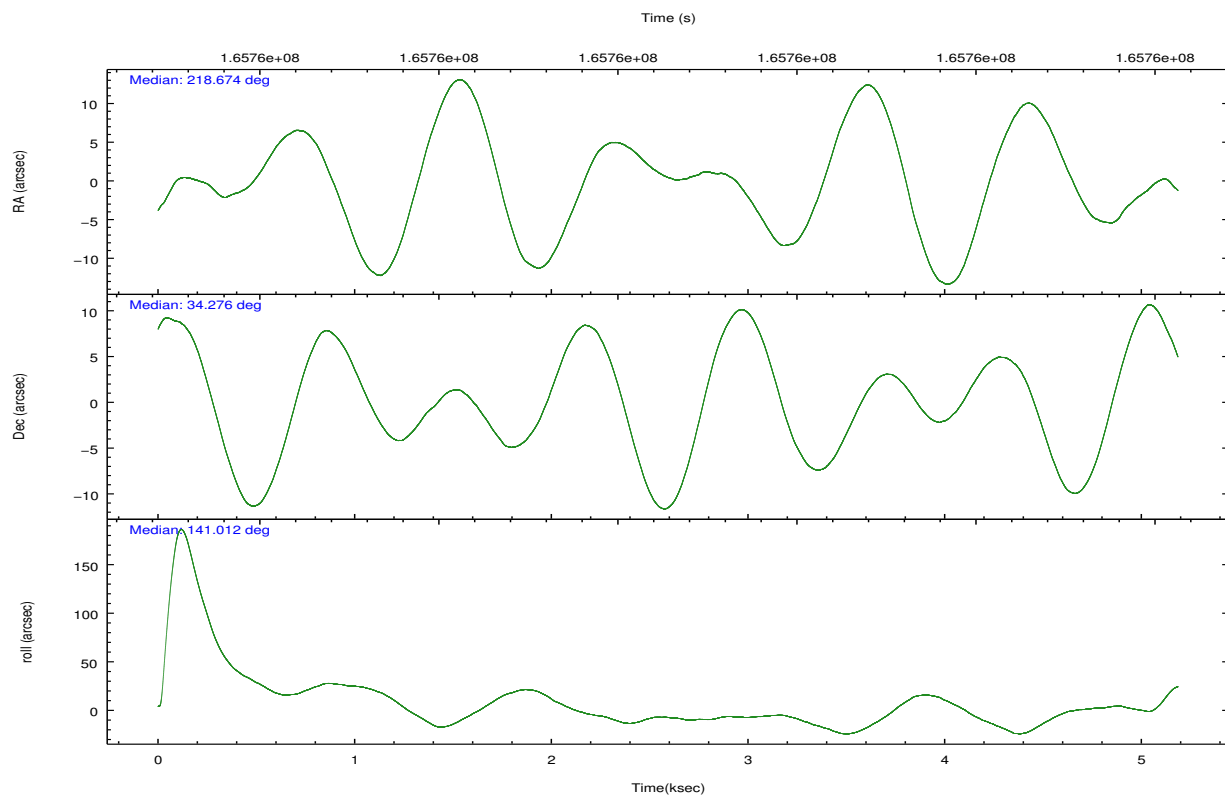
	ccd 0	ccd 1	ccd 2	ccd 3	ccd 6
grade 0 events	806	847	898	778	836
	3%	3%	3%	3%	3%
grade 1 events	9	5	6	20	11
	0%	0%	0%	0%	0%
grade 2 events	524	519	583	450	508
	2%	2%	2%	1%	2%
grade 3 events	294	310	260	260	294
	1%	1%	1%	1%	1%
grade 4 events	257	299	241	241	280
	1%	1%	0%	1%	1%
grade 5 events	682	780	651	744	755
	3%	3%	2%	3%	3%
grade 6 events	411	502	394	412	439
	1%	2%	1%	1%	1%
grade 7 events	19355	19601	22732	20962	20627
	86%	85%	88%	87%	86%

2.2 Compared Parameters

Parameter	Planned	Actual	Parameter	Planned	Actual
Instrument	ACIS	ACIS	Obspar format version number	7	7
Detector	ACIS-01236	ACIS-01236	Obspar file type	PREDICTED	ACTUAL
Grating	NONE	NONE	Obspar update status	NONE	UPDATED
Data mode	VFAINT	VFAINT	Number of optional ACIS chips dropped	0	0
Observation mode	POINTING	POINTING	On-chip summing requested	N	N
[deg] Pointing RA	218.706942	218.6741710525642	Subarray requested	NONE	NONE
[deg] Pointing Dec	34.271614	34.27586782246581	Alternating exposures requested	N	N
[deg] Pointing Roll	140.783050	141.0101107993687	[s] Primary exposure time	0.000000	3.1
[mm] SIM focus pos	-0.782348	-0.7809083437167272			
[mm] SIM defocus	0	0.001439871863259334			
[mm] SIM translation stage pos	-233.592463	-233.5874344608287			
[mm] SIM translation stage offset	0	-0.005018542100998502			
[s] Observation start time (MET)	165754875.184000	165754499.15279			
Observation start date	2003-04-03T11:00:11	2003-04-03T10:54:59			
[s] Observation end time (MET)	165759875.184000	165760009.04052			
Observation end date	2003-04-03T12:23:31	2003-04-03T12:26:49			
Read mode	TIMED	TIMED			

2.3 Aspect



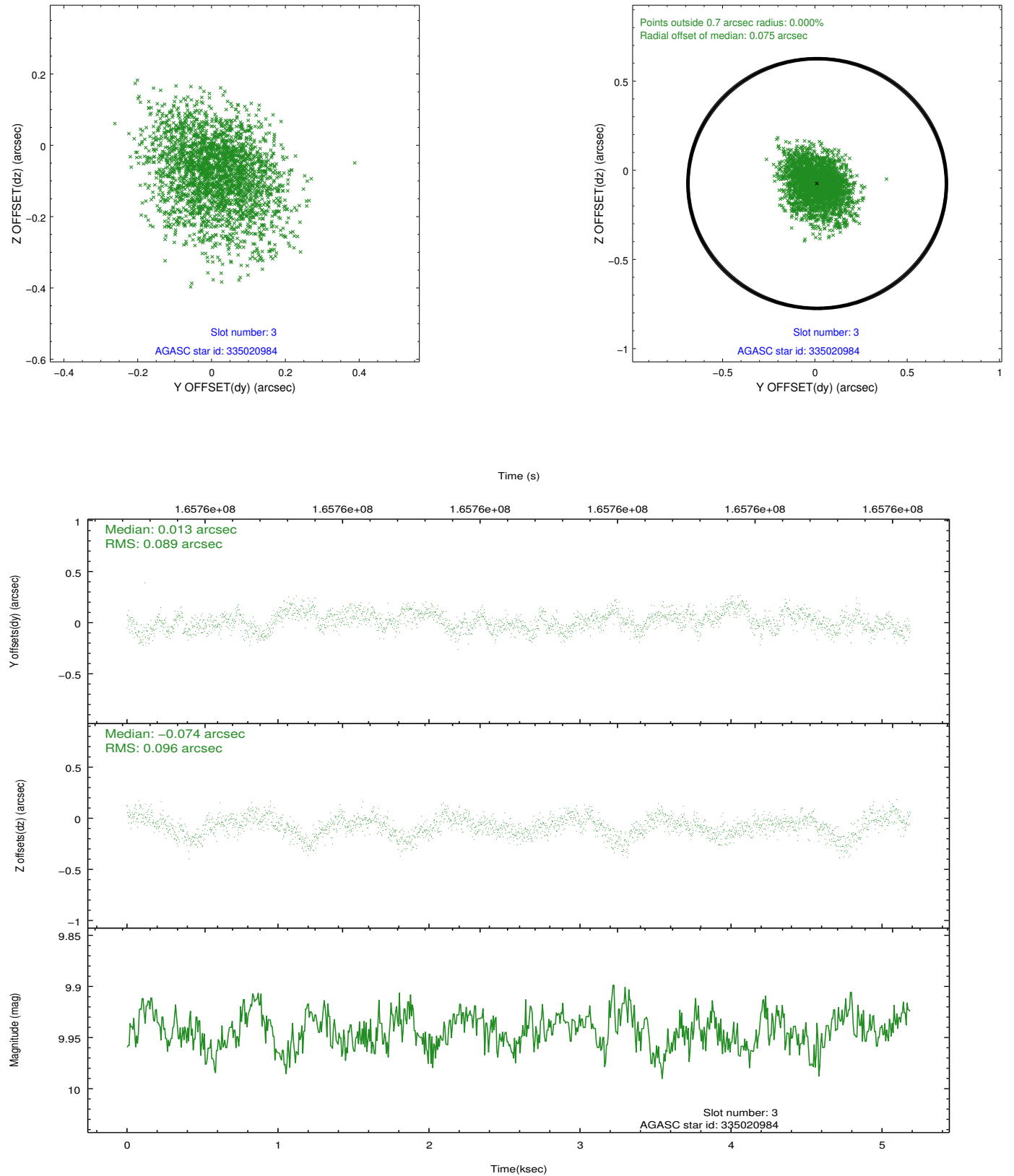


Slot Statistics

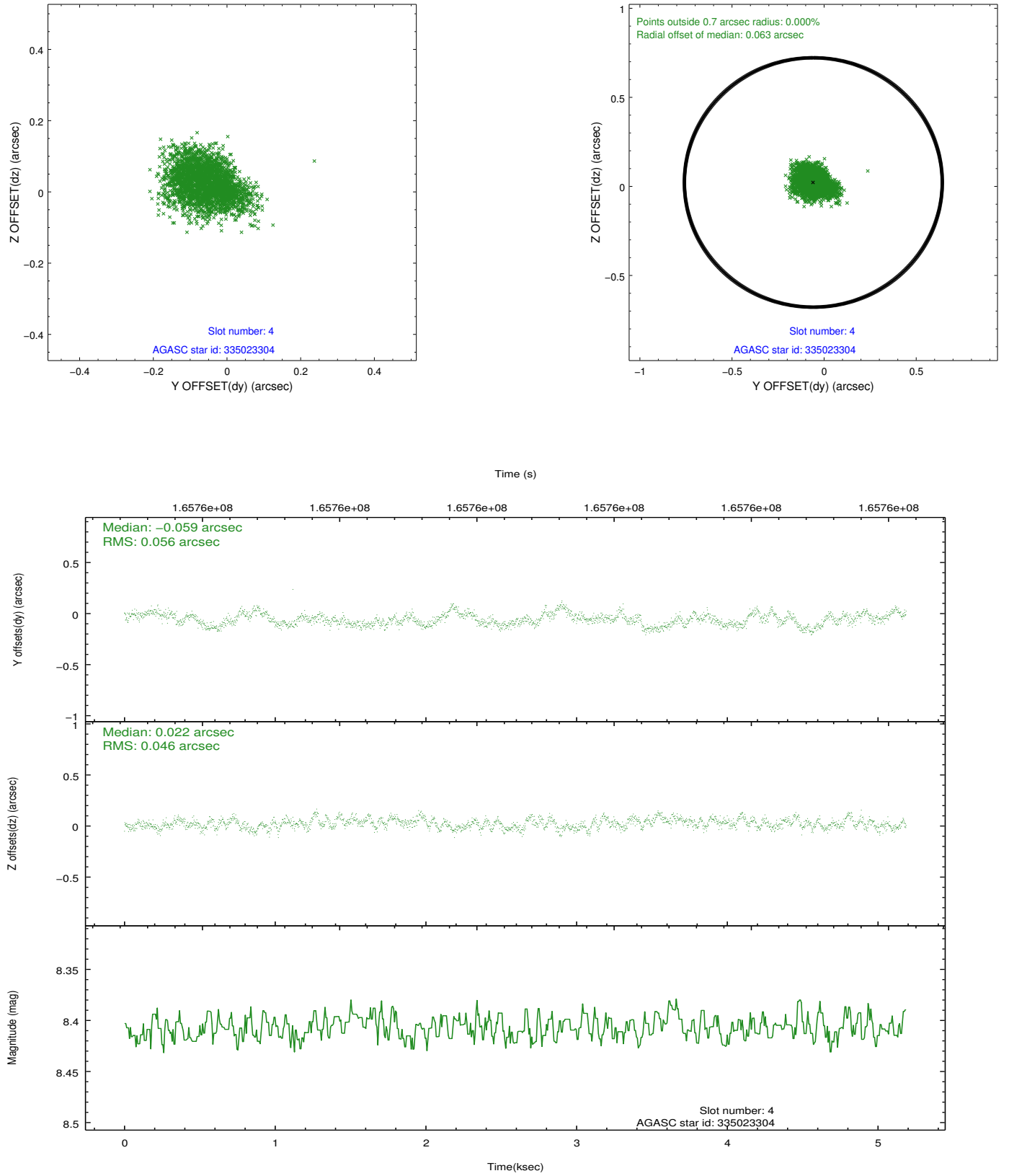
slot	status	id	mag	n_pts	med_dy	med_dz	dr1	dr2	ra	dec	mean_y	mean_z
0	FID	ACIS-I-1	7.25	1265	0.015	-0.007	0.006	0.010	0.000000	0.000000	937.33	-830.07
1	FID	ACIS-I-5	7.24	1265	-0.082	0.054	0.005	0.010	0.000000	0.000000	-1810.18	1066.95
2	FID	ACIS-I-6	7.26	1265	-0.024	0.023	0.007	0.011	0.000000	0.000000	401.63	1712.70
3	GUIDE	335020984	9.94	2526	0.013	-0.074	0.140	0.226	218.841668	33.815112	-1350.67	1018.64
4	GUIDE	335023304	8.41	2531	-0.059	0.022	0.078	0.123	218.883608	34.686545	538.72	-1487.45
5	GUIDE	335025040	9.91	2525	-0.003	-0.014	0.107	0.180	218.601670	34.305240	319.27	103.86
6	OMITTED		0.00	0	0.000	0.000	0.000	0.000	0.000000	0.000000	0.00	0.00
7	GUIDE	335153936	10.27	2510	0.047	0.069	0.142	0.230	219.671318	34.457728	-1785.37	-2338.65

2.4 Star Slots

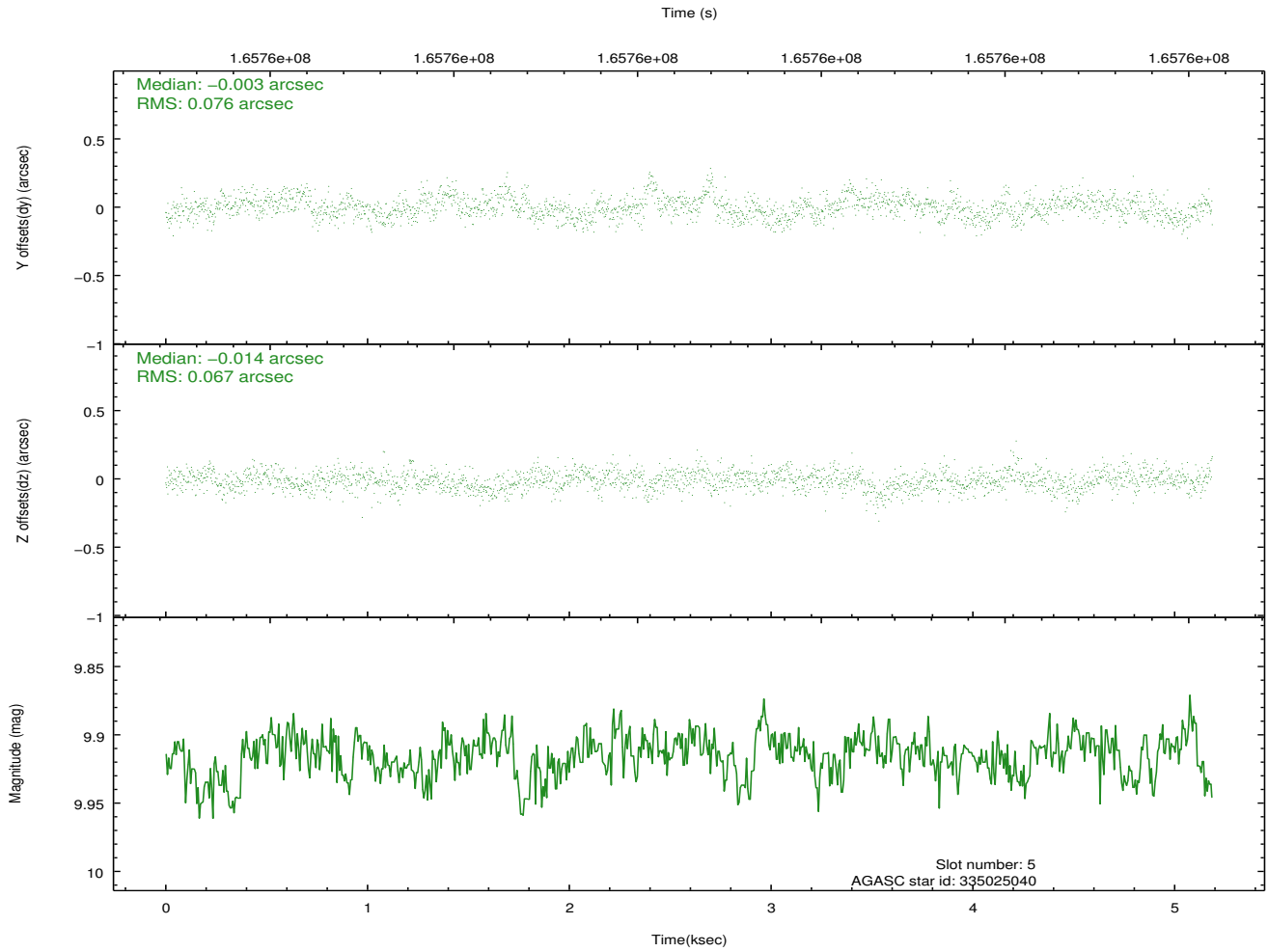
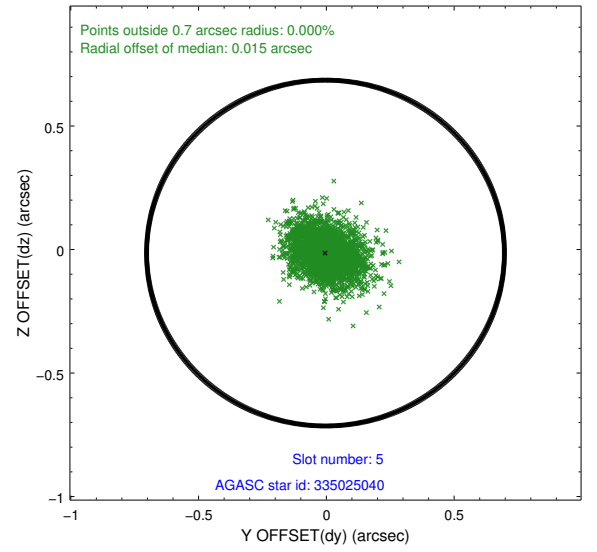
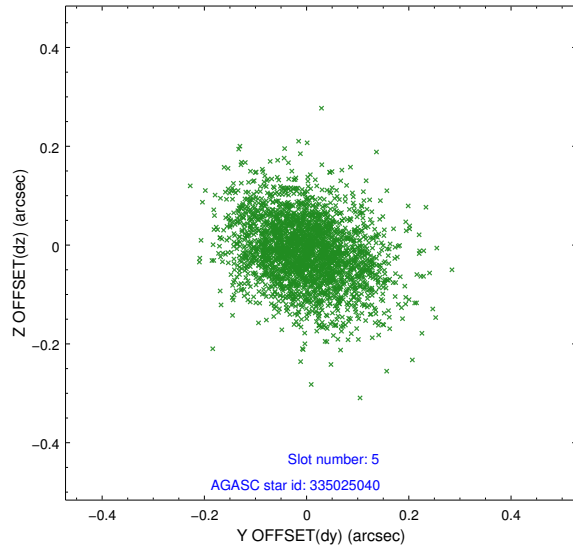
2.4.1 Slot 3



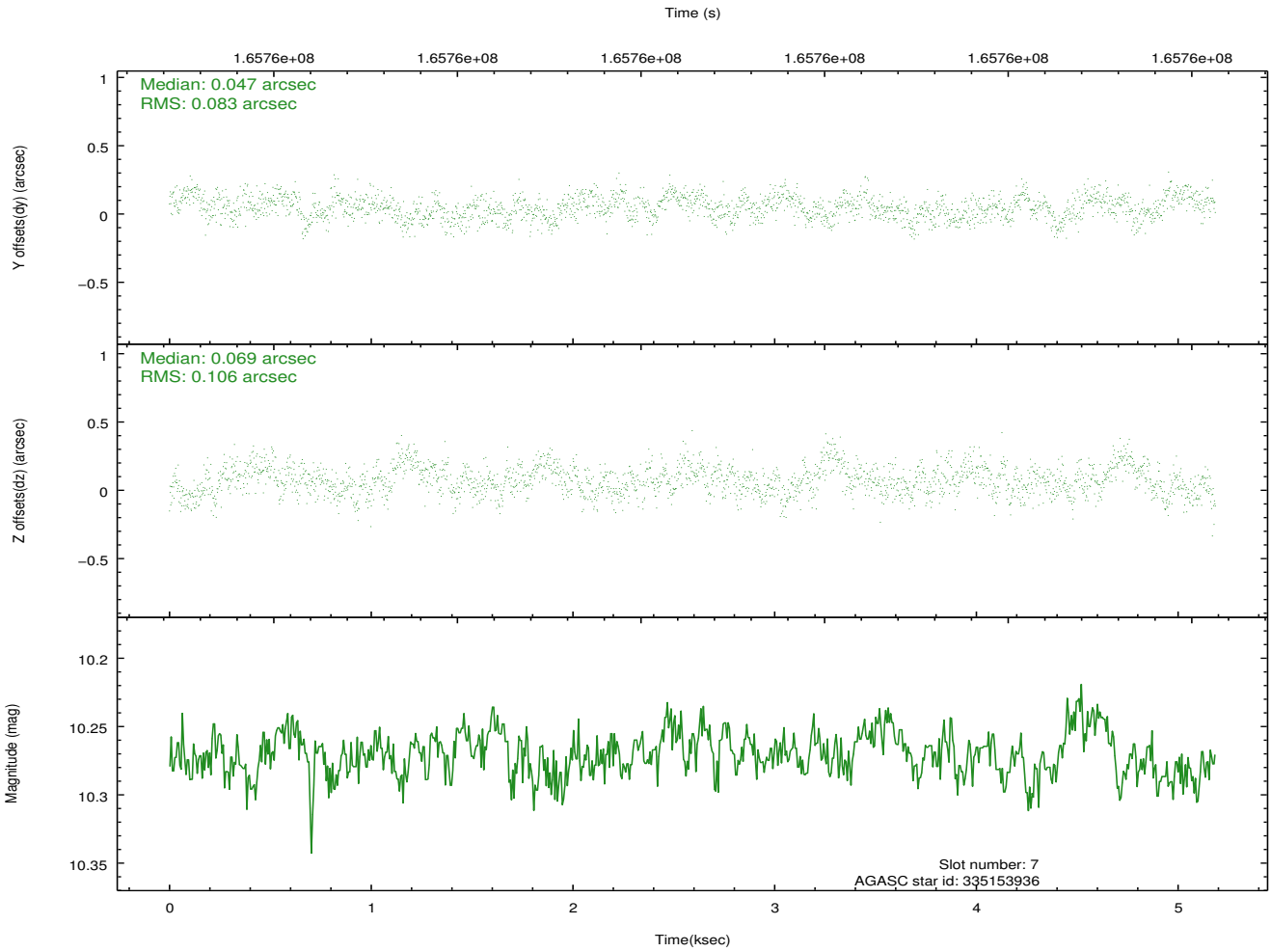
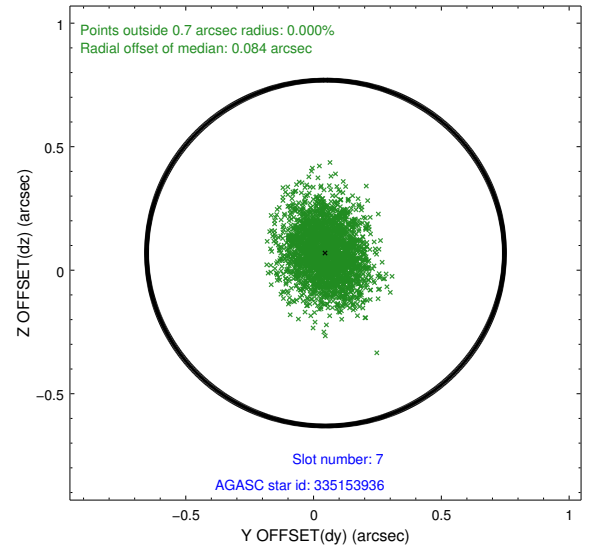
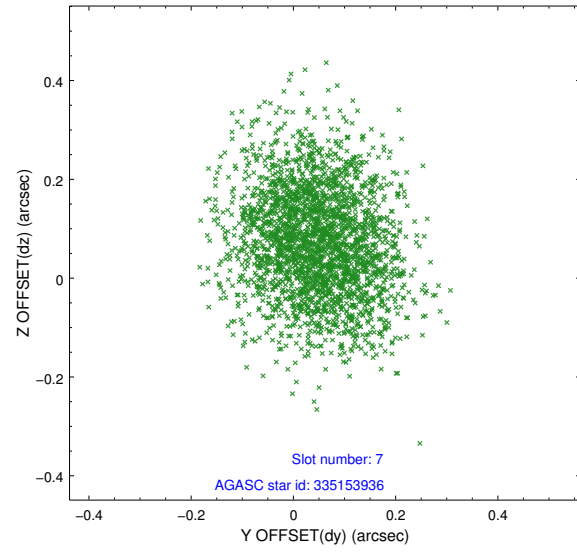
2.4.2 Slot 4



2.4.3 Slot 5

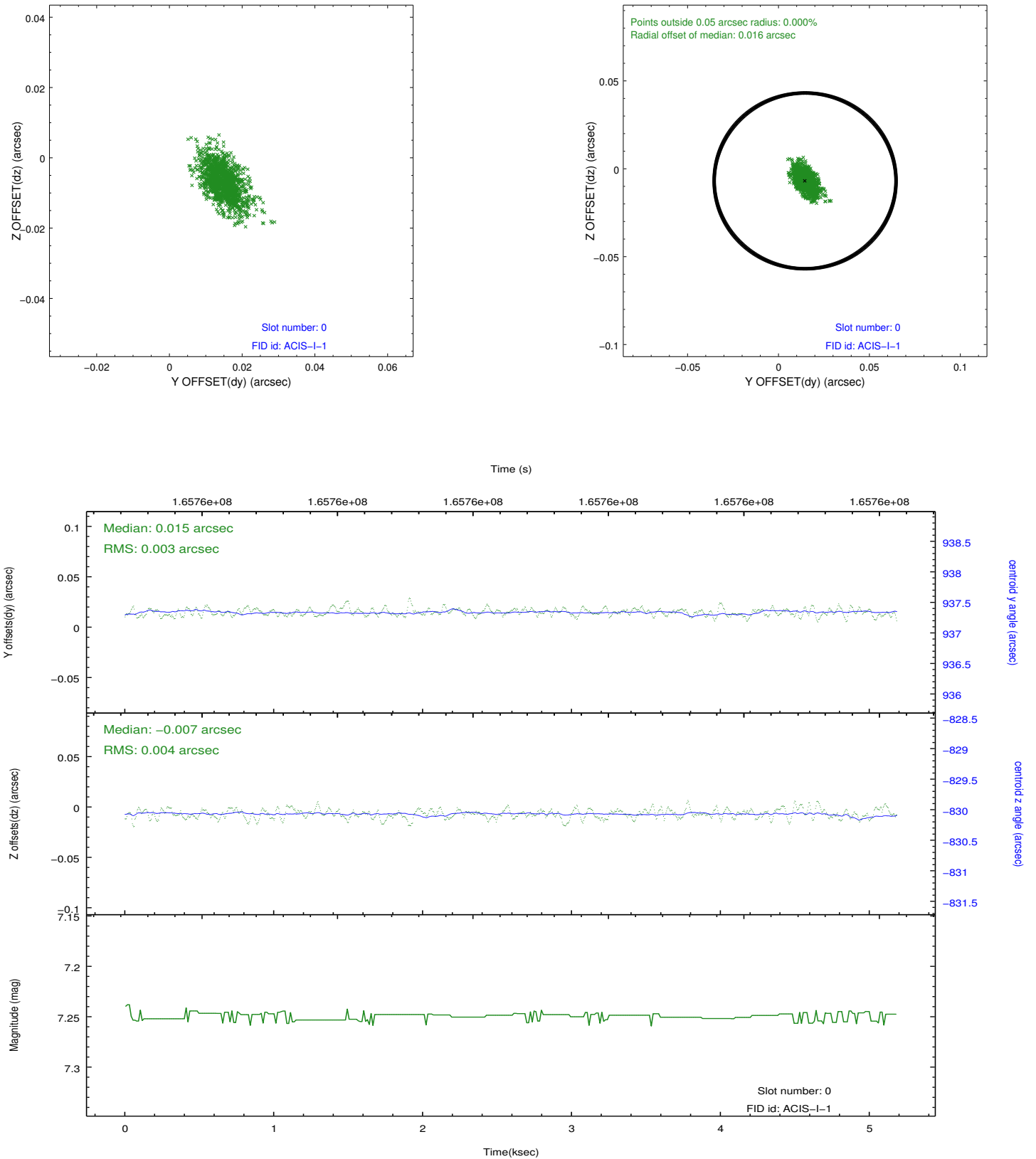


2.4.4 Slot 7

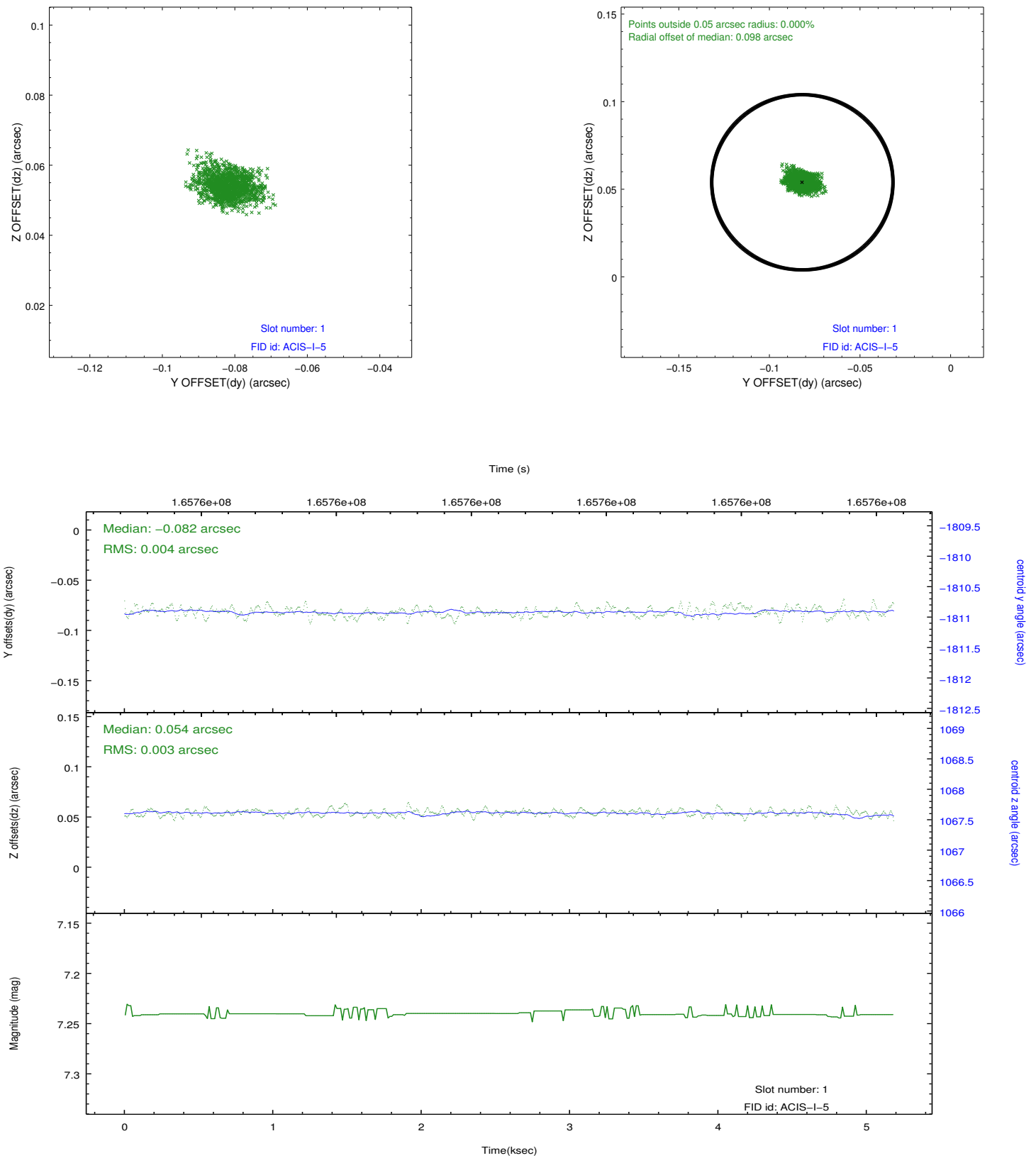


2.5 FID Slots

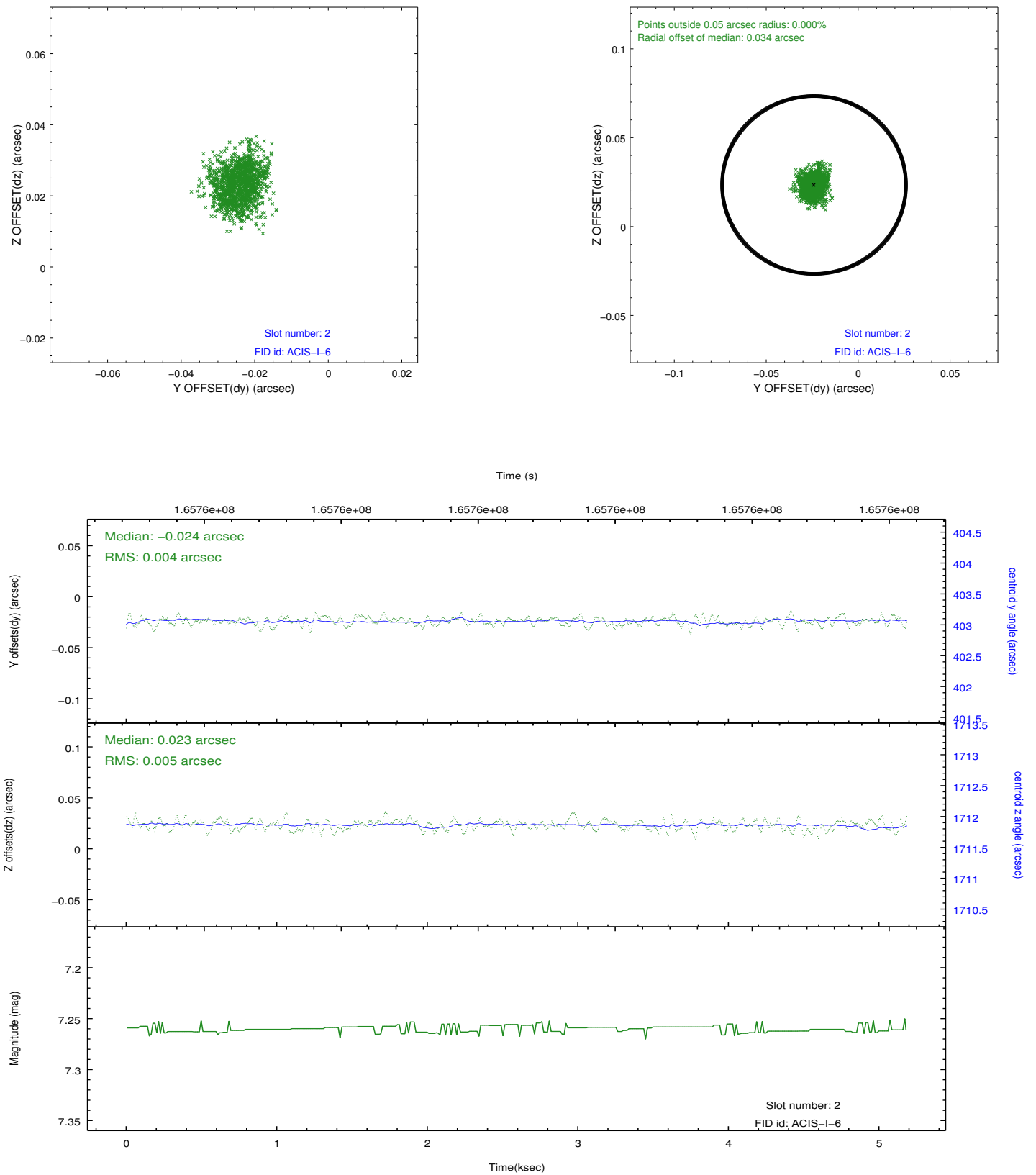
2.5.1 Slot 0



2.5.2 Slot 1



2.5.3 Slot 2



A Summary

A.1 Status

V&V Scientist	Jen Lauer
V&V Date (YYYY-MM-DD)	2012.11.14
V&V Edition	1
V&V Disposition and Status	OK
V&V Charge Time	4.777

A.2 Comments

The guide star in slot 6 was removed from the aspect solution due to poor data quality. The aspect solution is improved by the removal of this guide star from the solution.