

V&V Reference Report

L2 ASCDS Version : 7.6.8

Observation 3658 - L2 Version 001
Chandra X-Ray Center

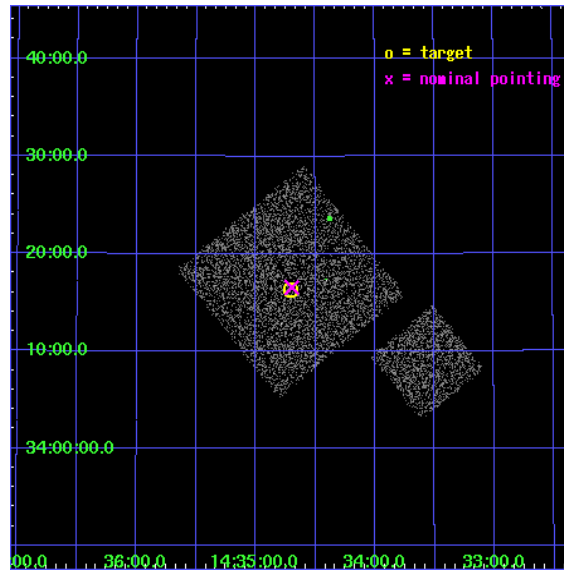
L2 Processing Date : Jul 31 2006

Contents

1	Front	2
2	OBI	3
2.1	OBI	3
2.1.1	Images	3
2.1.2	Bias	3
2.1.3	Parameters	4
2.1.4	Events	4
2.2	Compared Parameters	5
2.3	Aspect	6
2.4	Star Slots	9
2.4.1	Slot 3	9
2.4.2	Slot 4	10
2.4.3	Slot 5	11
2.4.4	Slot 7	12
2.5	FID Slots	13
2.5.1	Slot 0	13
2.5.2	Slot 1	14
2.5.3	Slot 2	15
3	Point Sources	16
A	Summary	17
A.1	Status	17
A.2	Comments	17

1 Front

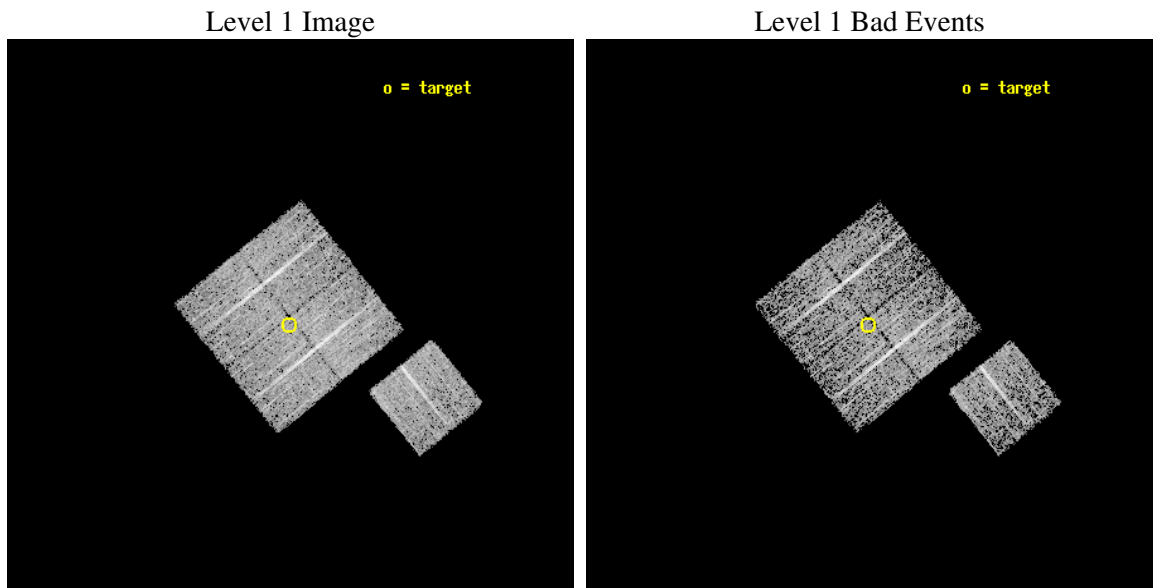
seq_num	900258
obs_id	3658
title	CHANDRA LARGE SCALE SURVEY OF THE NOAO BOOTES DEEP FIELD
observer	Dr. Stephen Murray
object	NOAO FIELD F44
dtcycle	0
cycle	P
ra_targ	218.676831
dec_targ	34.271694
ra_nom	218.67417105256
dec_nom	34.275867822466
roll_nom	141.01011079937
revision	3
ontime	4777.0999908149
livetime	4714.6836625851
ontime0	4777.0999908149
ontime1	4777.0999908149
ontime2	4773.9590006769
ontime3	4777.0999908149
ontime6	4777.0999908149
l2events	9420



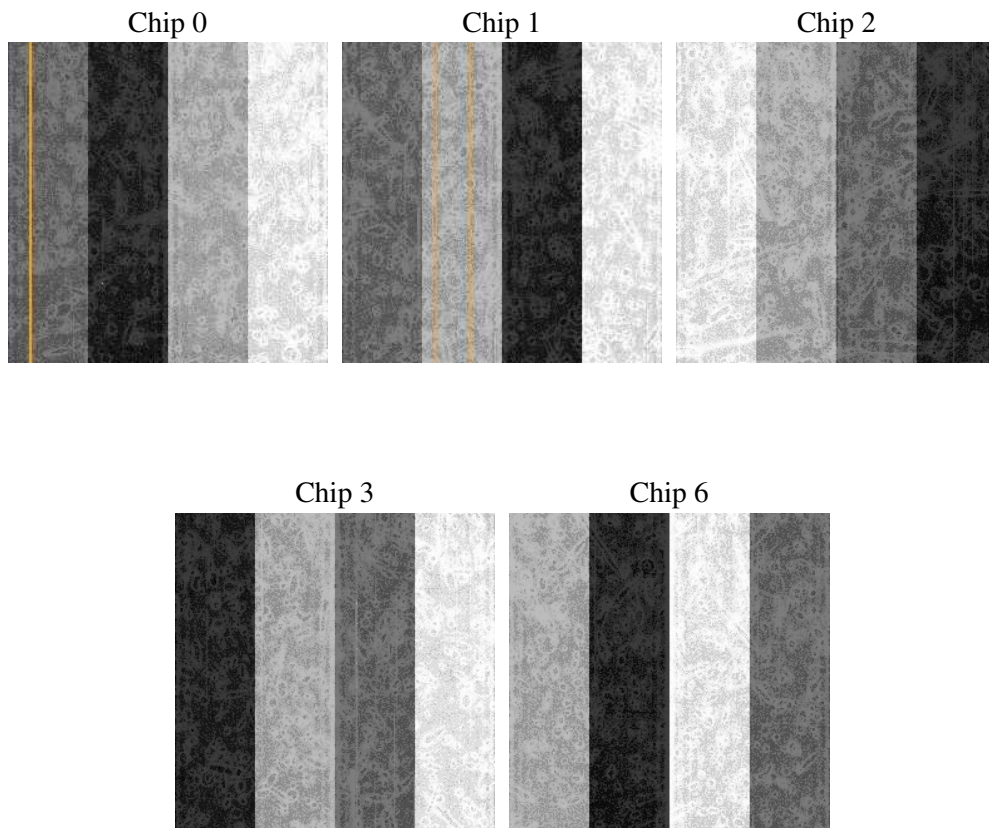
2 OBI

2.1 OBI

2.1.1 Images



2.1.2 Bias



2.1.3 Parameters

obi_num	1
ascdsver	7.6.8
caldbver	3.2.2
date	2006-07-31T13:14:59
revision	3

sched_exp_time	5000.000000
ontime	4780.6142315269
ontime0	4780.6142116487
ontime1	4780.6142116487
ontime2	4777.4732215106
ontime3	4780.6142315269
ontime6	4780.6142315269
llevents	118583

2.1.4 Events

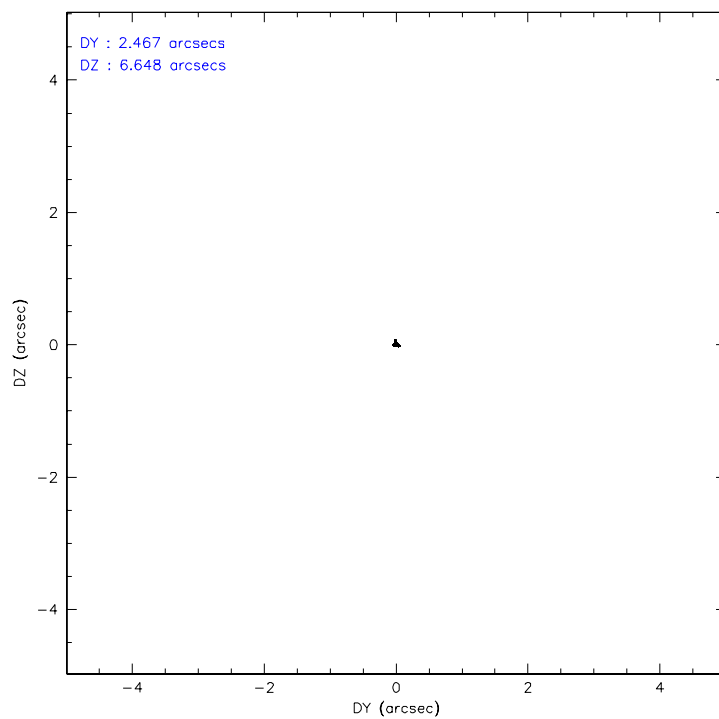
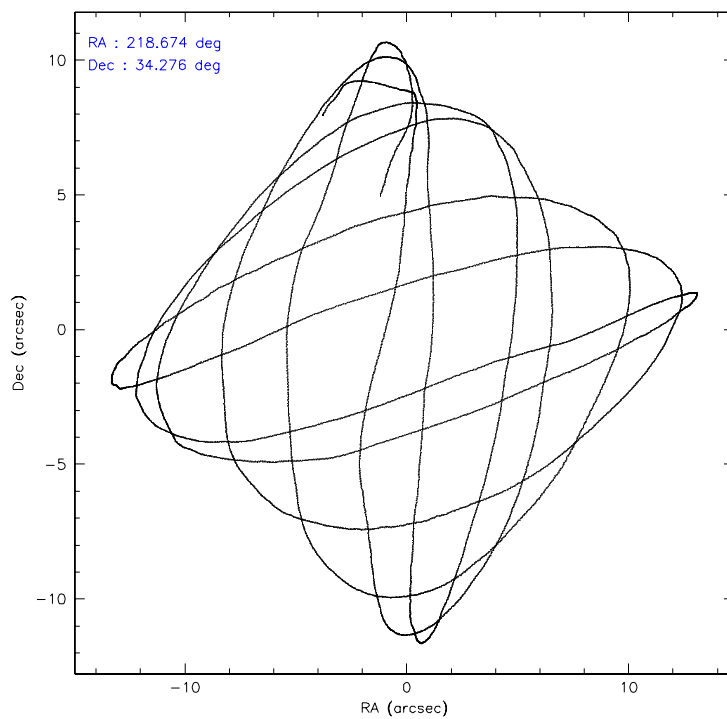
	ccd 0	ccd 1	ccd 2	ccd 3	ccd 6
level 1 events	22338	22863	25765	23867	23750
rejected events	20046	20386	23390	21728	21394
rejected %	89%	89%	90%	91%	90%

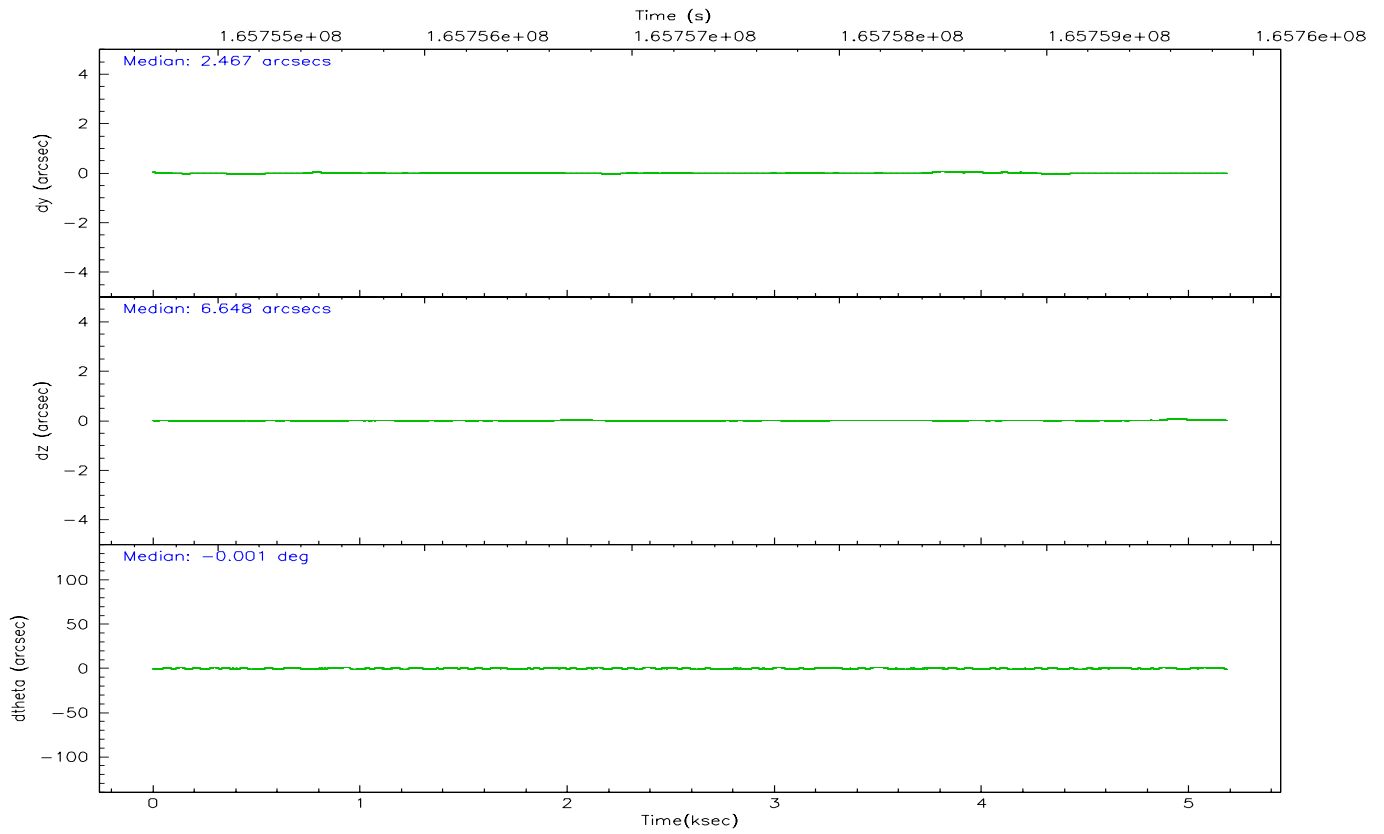
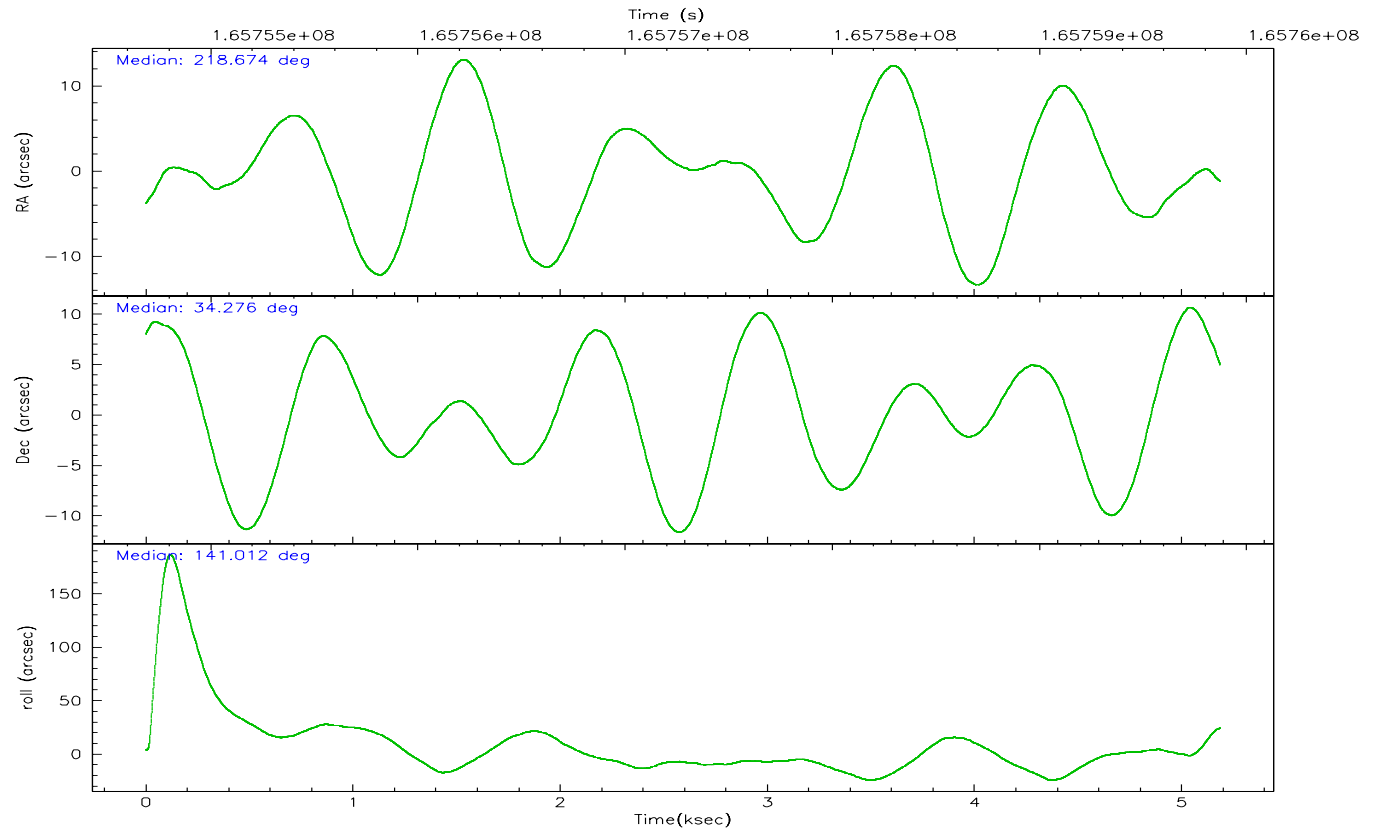
	ccd 0	ccd 1	ccd 2	ccd 3	ccd 6
grade 0 events	806	847	898	778	836
	3%	3%	3%	3%	3%
grade 1 events	9	5	6	20	11
	0%	0%	0%	0%	0%
grade 2 events	524	519	583	450	508
	2%	2%	2%	1%	2%
grade 3 events	294	310	260	260	294
	1%	1%	1%	1%	1%
grade 4 events	257	299	241	241	280
	1%	1%	0%	1%	1%
grade 5 events	682	780	651	744	755
	3%	3%	2%	3%	3%
grade 6 events	411	502	394	412	439
	1%	2%	1%	1%	1%
grade 7 events	19355	19601	22732	20962	20627
	86%	85%	88%	87%	86%

2.2 Compared Parameters

Parameter	Planned	Actual	Parameter	Planned	Actual
Instrument	ACIS	ACIS	Obspar format version number	6	6
Detector	ACIS-01236	ACIS-01236	Obspar file type	PREDICTED	ACTUAL
Grating	NONE	NONE	Obspar update status	NONE	UPDATED
Data mode	VFAINT	VFAINT	On-chip summing requested	N	N
Observation mode	POINTING	POINTING	Subarray requested	NONE	NONE
Pointing RA	218.706942	218.6741710525645	Alternating exposures requested	N	N
Pointing Dec	34.271614	34.27586782246583	Primary exposure time	0.000000	3.1
Pointing Roll	140.783050	141.0101107993686			
SIM focus pos (mm)	-0.782348	-0.7809083437167272			
SIM defocus (mm)	0	0.001439871863259334			
SIM translation stage pos (mm)	-233.592463	-233.5874344608287			
SIM translation stage offset (mm)	0	-0.005018542100998502			
Observation start time	165754875.184000	165754499.15279			
Observation start date	2003-04-03T11:00:11	2003-04-03T10:54:59			
Observation end time	165759875.184000	165760009.04052			
Observation end date	2003-04-03T12:23:31	2003-04-03T12:26:49			
Read mode	TIMED	TIMED			

2.3 Aspect



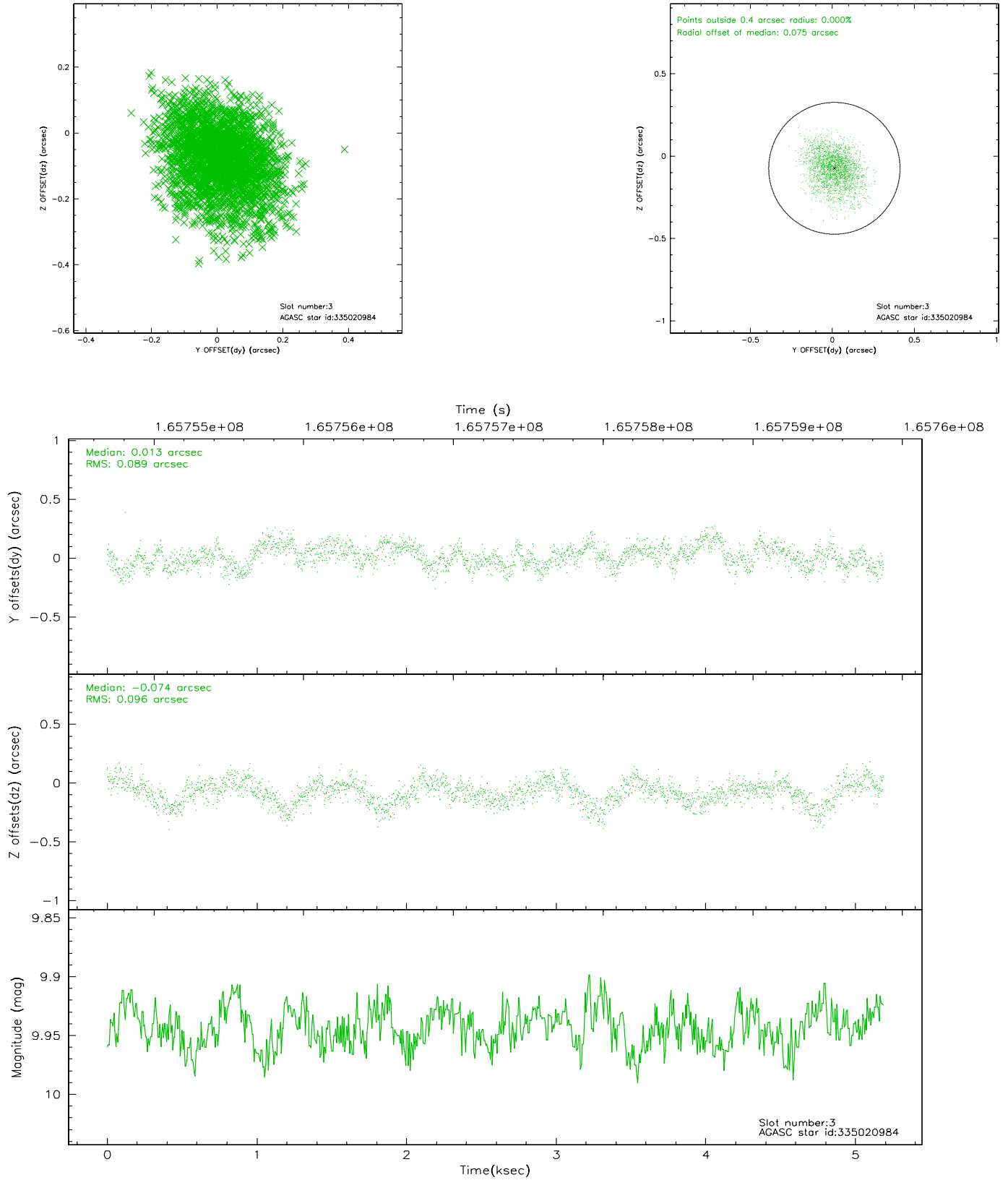


Slot Statistics

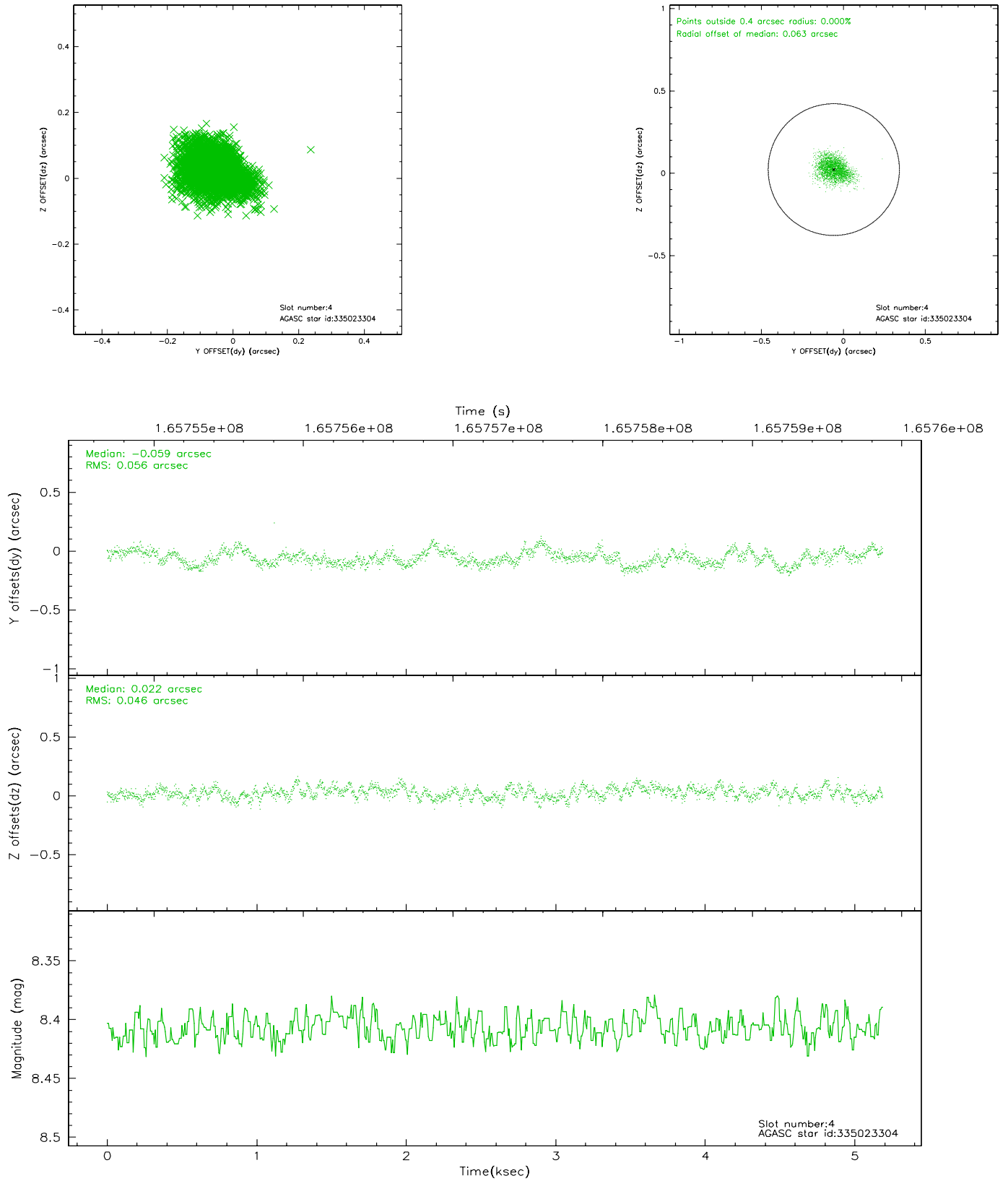
slot	status	id	mag	n_pts	med_dy	med_dz	dr1	dr2	ra	dec	mean_y	mean_z
0	FID	ACIS-I-1	7.25	1265	-0.005	0.020	0.005	0.010	0.000000	0.000000	937.32	-830.03
1	FID	ACIS-I-5	7.24	1265	-0.051	0.046	0.005	0.010	0.000000	0.000000	-1810.15	1066.96
2	FID	ACIS-I-6	7.26	1265	-0.034	0.004	0.006	0.010	0.000000	0.000000	401.62	1712.70
3	GUIDE	335020984	9.94	2526	0.013	-0.074	0.140	0.226	218.841668	33.815112	-1350.67	1018.64
4	GUIDE	335023304	8.41	2531	-0.059	0.022	0.078	0.123	218.883608	34.686545	538.72	-1487.45
5	GUIDE	335025040	9.91	2525	-0.003	-0.014	0.107	0.180	218.601670	34.305240	319.27	103.86
6	OMITTED		0.00	0	0.000	0.000	0.000	0.000	0.000000	0.000000	0.00	0.00
7	GUIDE	335153936	10.27	2510	0.047	0.069	0.142	0.230	219.671318	34.457728	-1785.37	-2338.65

2.4 Star Slots

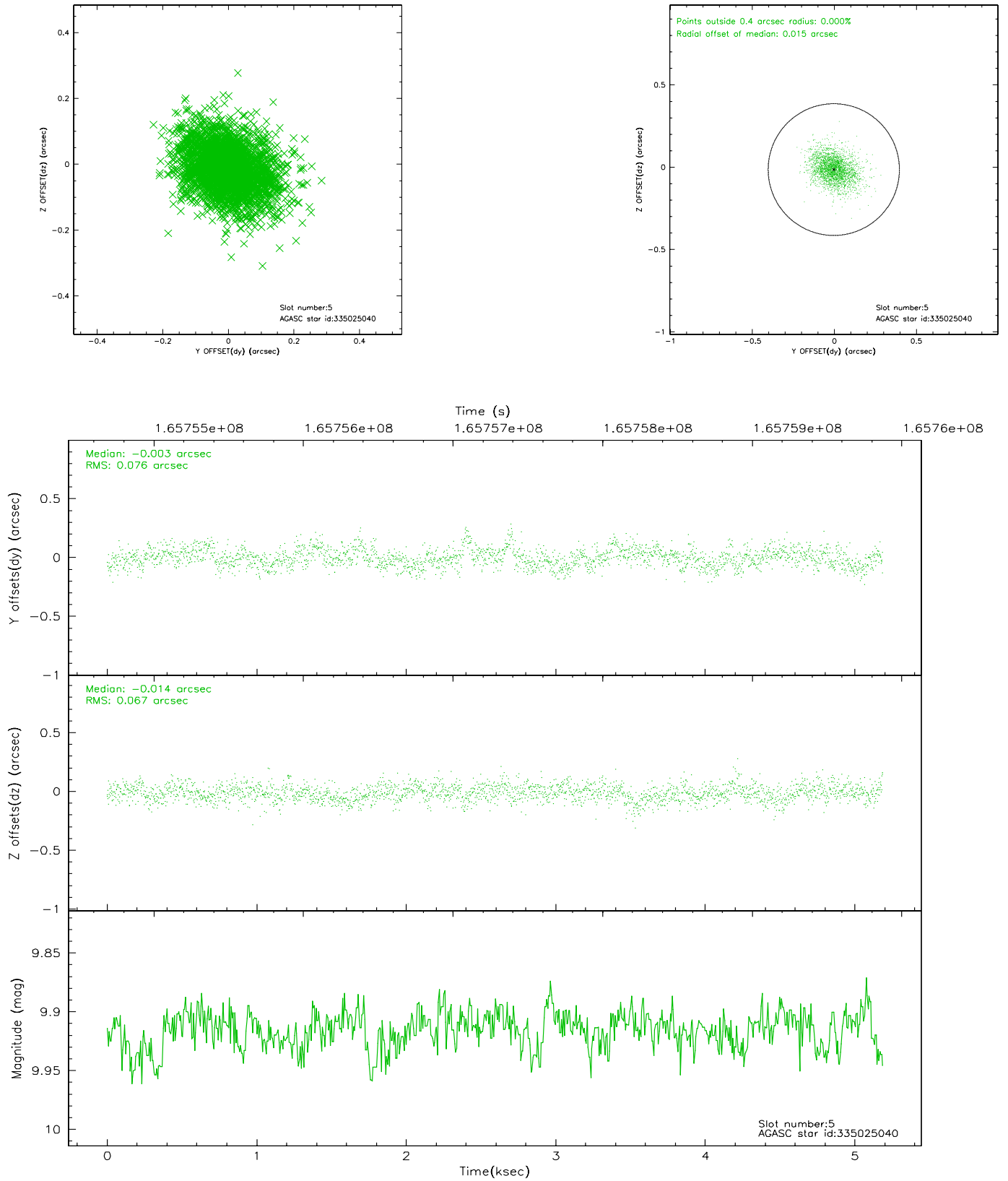
2.4.1 Slot 3



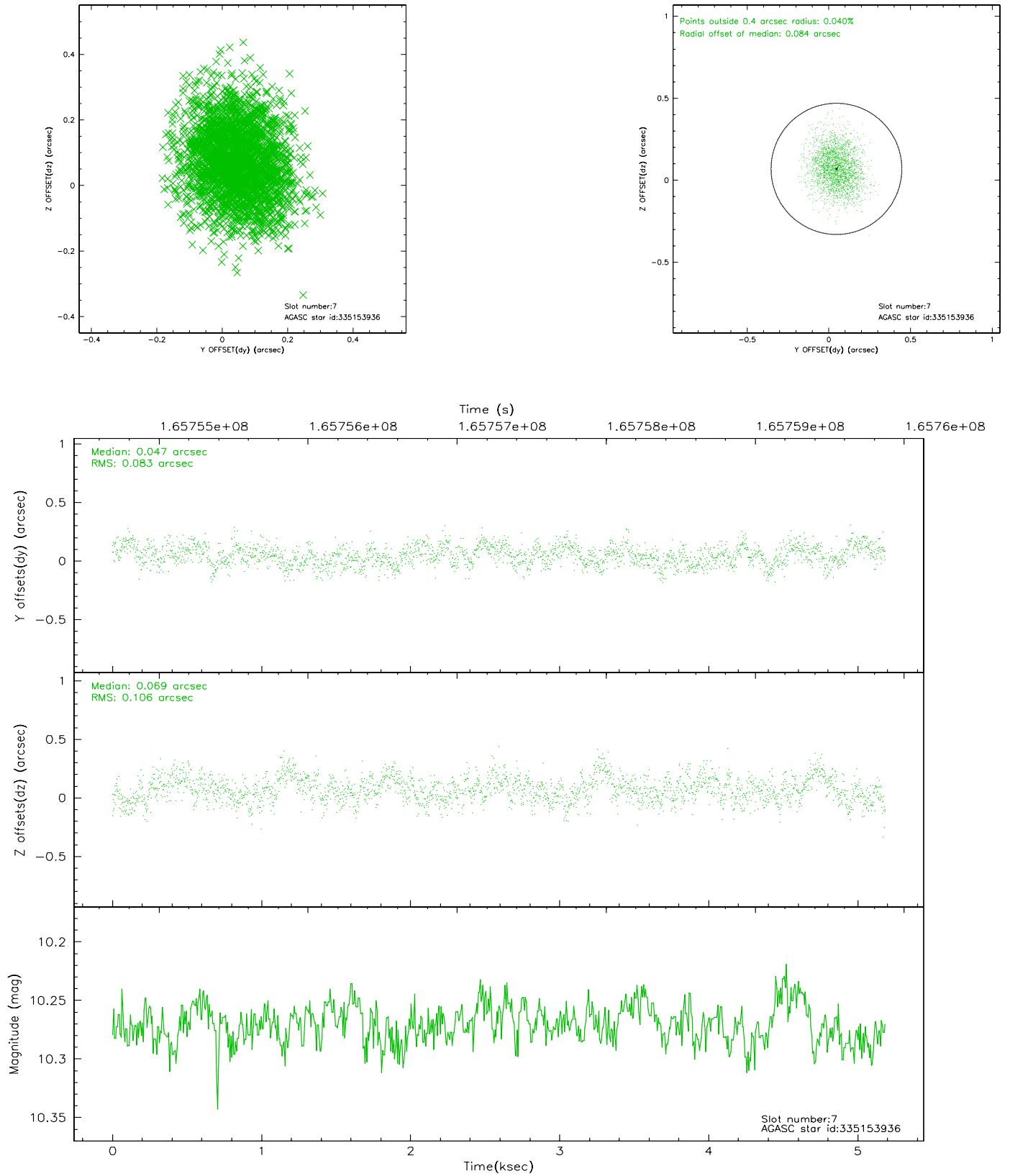
2.4.2 Slot 4



2.4.3 Slot 5

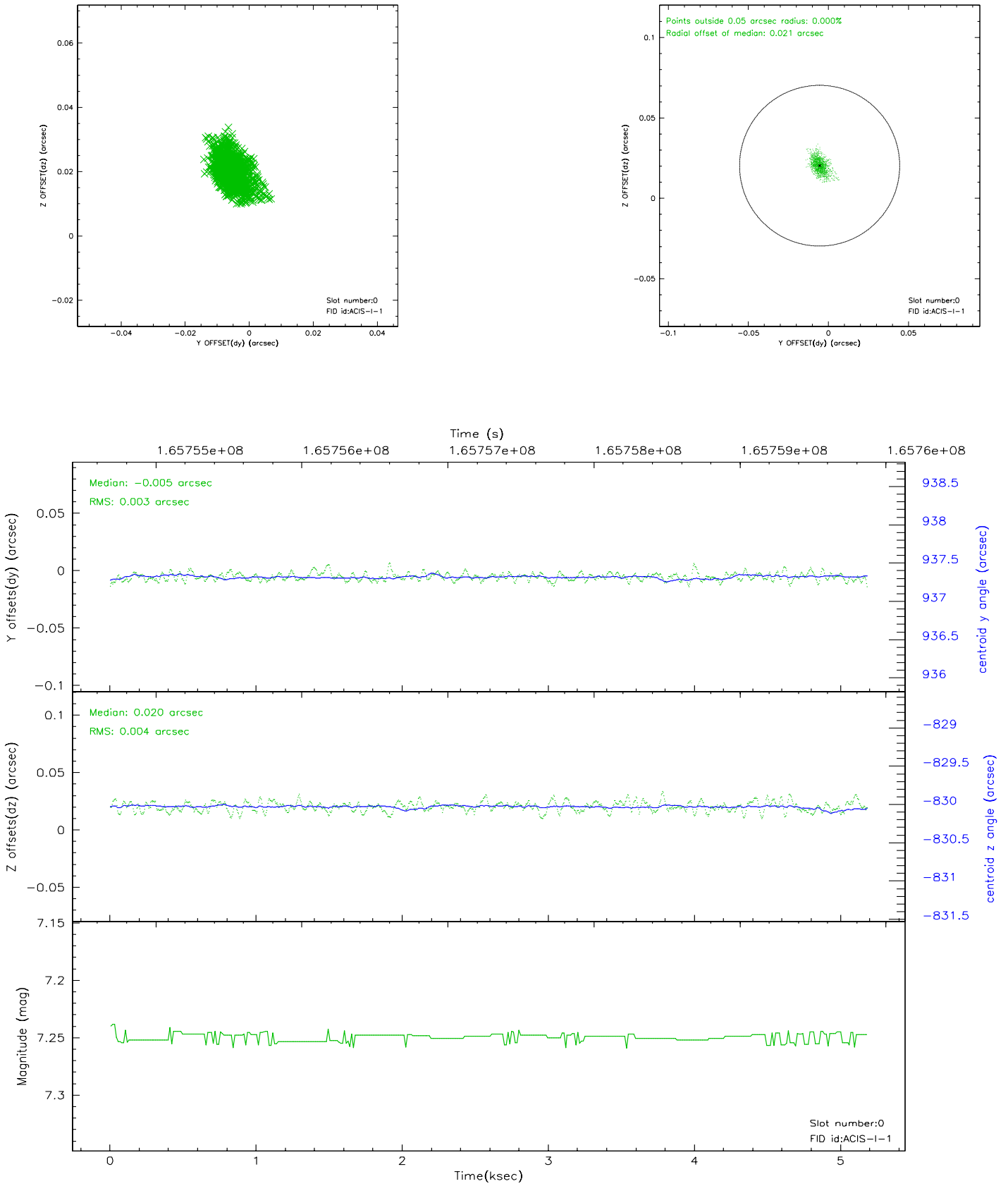


2.4.4 Slot 7

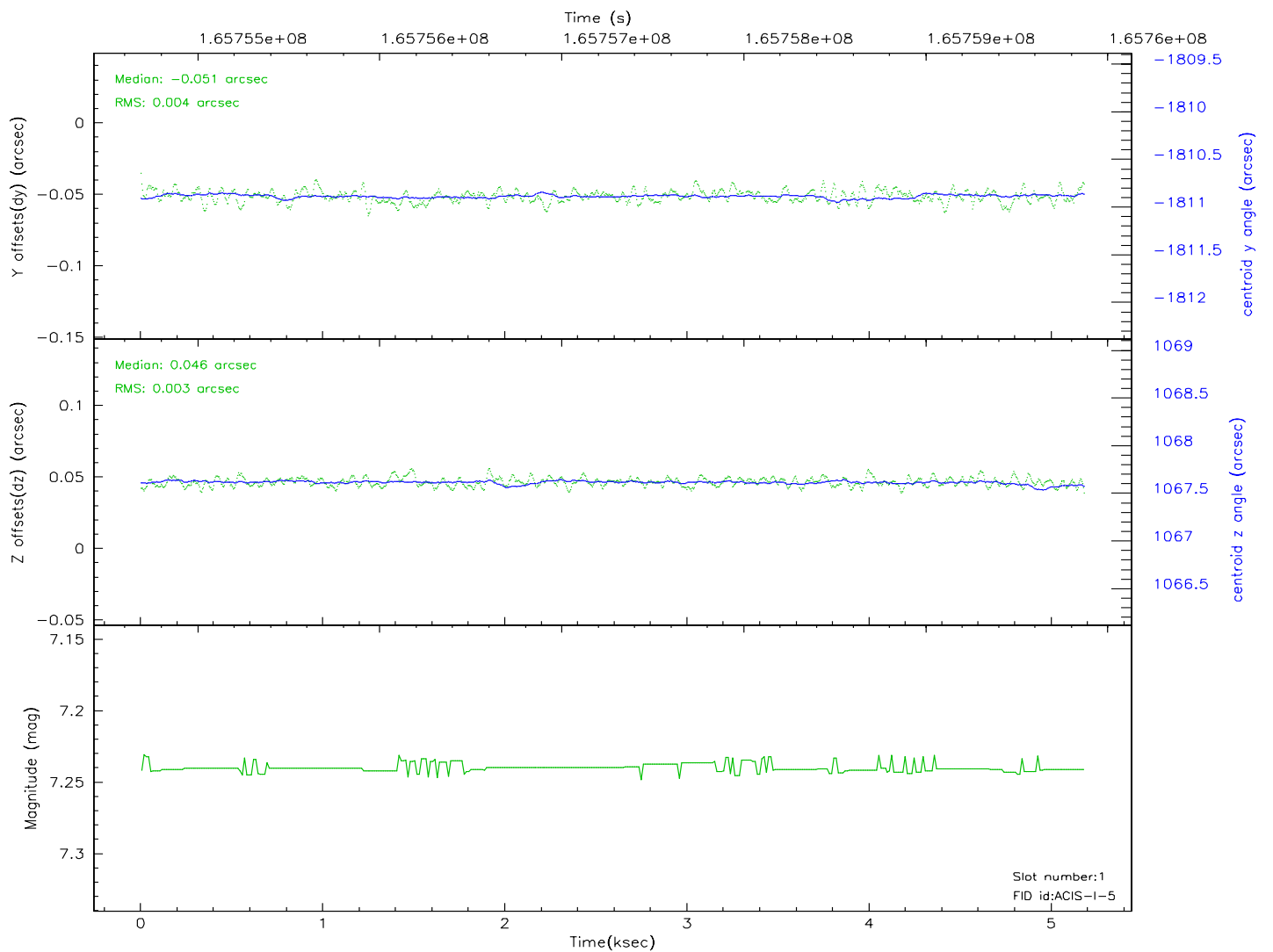
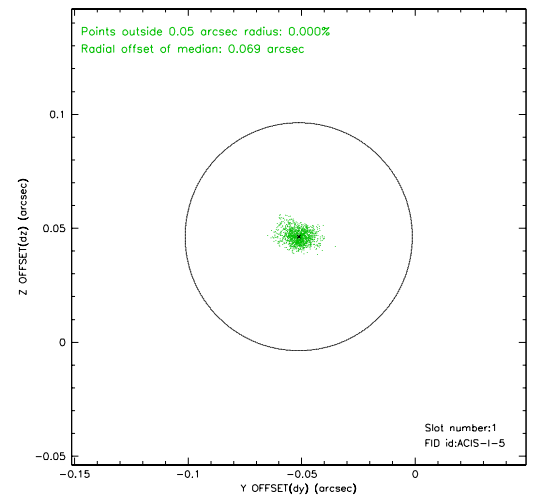
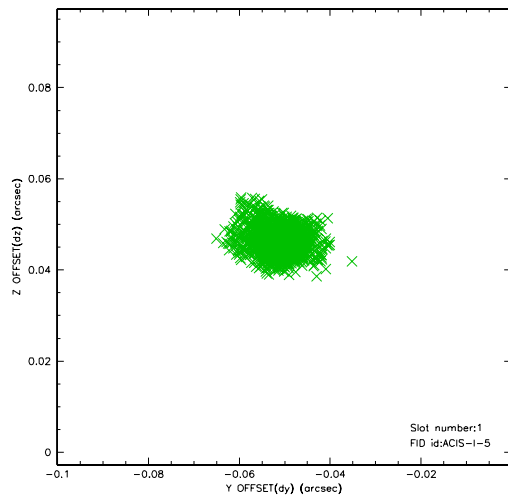


2.5 FID Slots

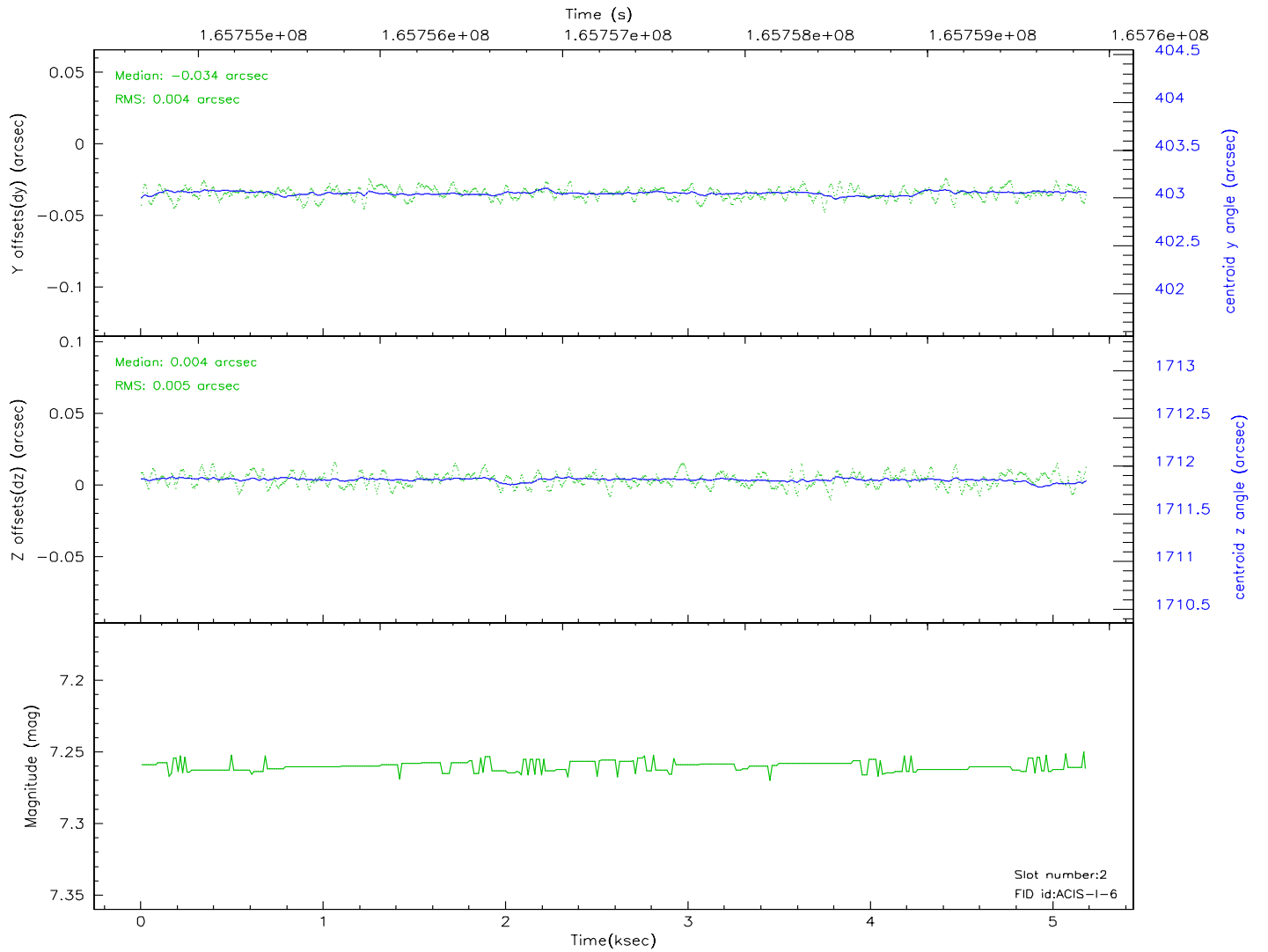
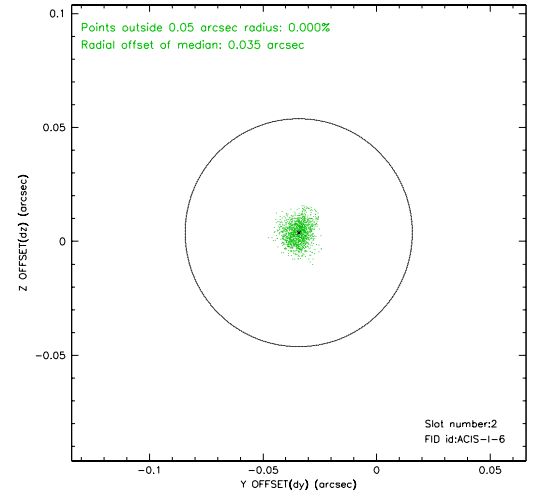
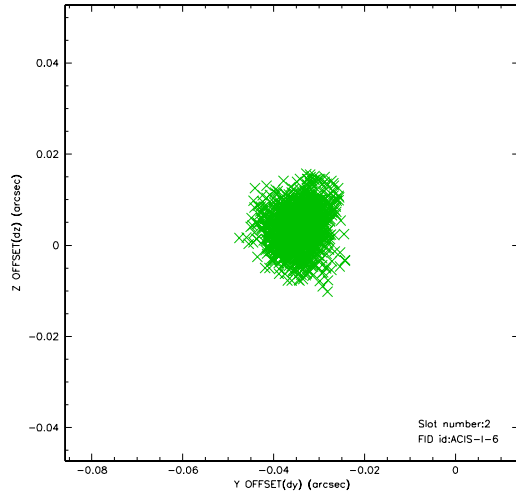
2.5.1 Slot 0



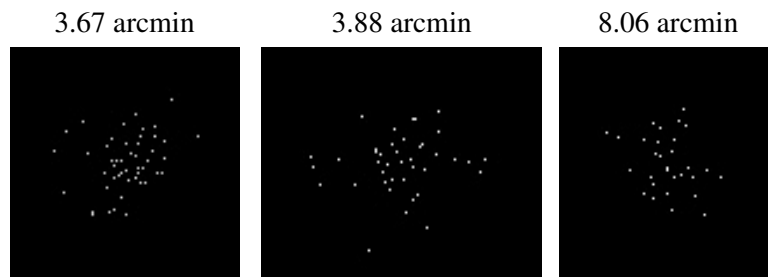
2.5.2 Slot 1



2.5.3 Slot 2



3 Point Sources



A Summary

A.1 Status

V&V Scientist	Beth Sundheim
V&V Date (YYYY-MM-DD)	2010.10.01
V&V Edition	2
V&V Disposition and Status	OK
V&V Charge Time	4.777

A.2 Comments

The guide star in slot 6 was manually excluded from the processing due to poor data quality.