

V&V Reference Report

L2 ASCDS Version : 7.6.8

Observation 3655 - L2 Version 001
Chandra X-Ray Center

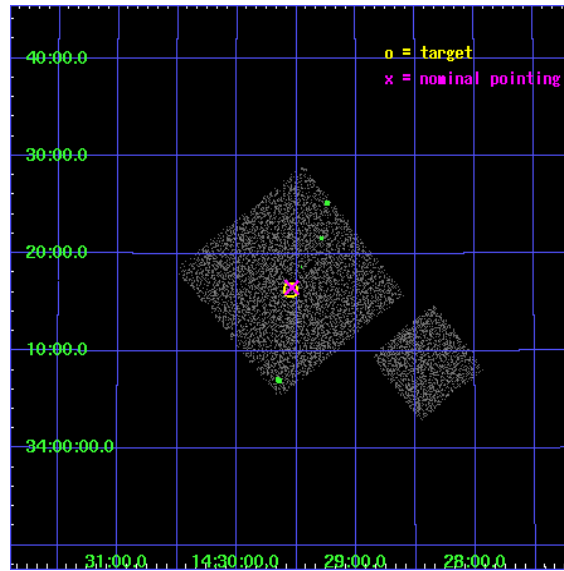
L2 Processing Date : Jul 30 2006

Contents

1	Front	2
2	OBI	3
2.1	OBI	3
2.1.1	Images	3
2.1.2	Bias	3
2.1.3	Parameters	4
2.1.4	Events	4
2.2	Compared Parameters	5
2.3	Aspect	6
2.4	Star Slots	9
2.4.1	Slot 3	9
2.4.2	Slot 4	10
2.4.3	Slot 5	11
2.4.4	Slot 6	12
2.4.5	Slot 7	13
2.5	FID Slots	14
2.5.1	Slot 0	14
2.5.2	Slot 1	15
2.5.3	Slot 2	16
3	Point Sources	17
A	Summary	18
A.1	Status	18
A.2	Comments	18

1 Front

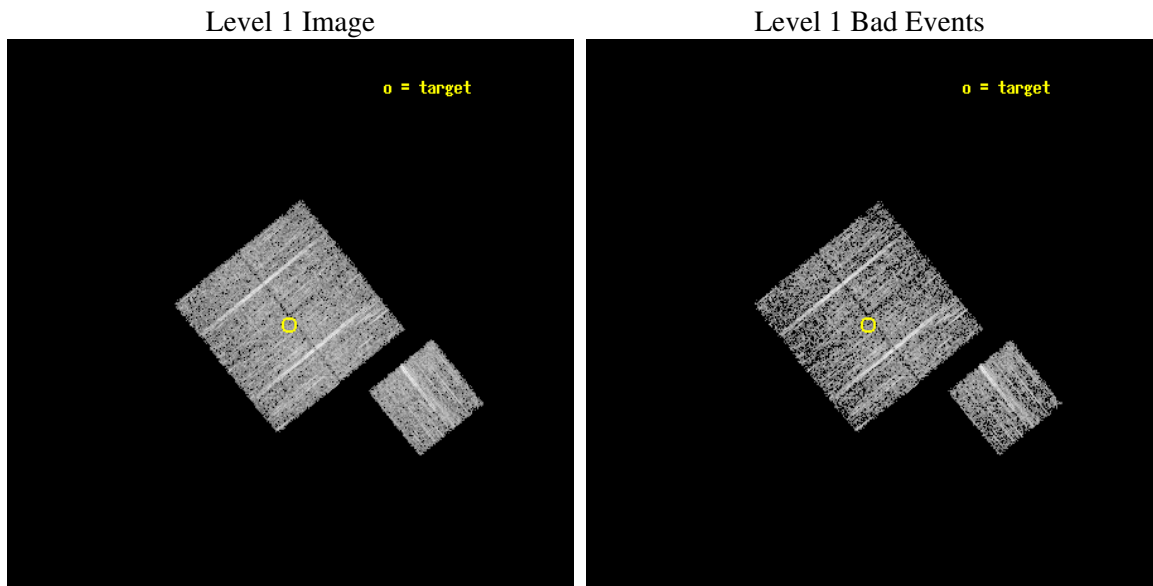
seq_num	900255
obs_id	3655
title	CHANDRA LARGE SCALE SURVEY OF THE NOAO BOOTES DEEP FIELD
observer	Dr. Stephen Murray
object	NOAO FIELD F11
dtcycle	0
cycle	P
ra_targ	217.38708
dec_targ	34.271694
ra_nom	217.38443755428
dec_nom	34.275759415436
roll_nom	141.01006506283
revision	2
ontime	4578.6999911964
livetime	4518.8759050215
ontime0	4578.6999911964
ontime1	4578.6999911964
ontime2	4578.6999911964
ontime3	4578.6999911964
ontime6	4578.6999911964
l2events	10120



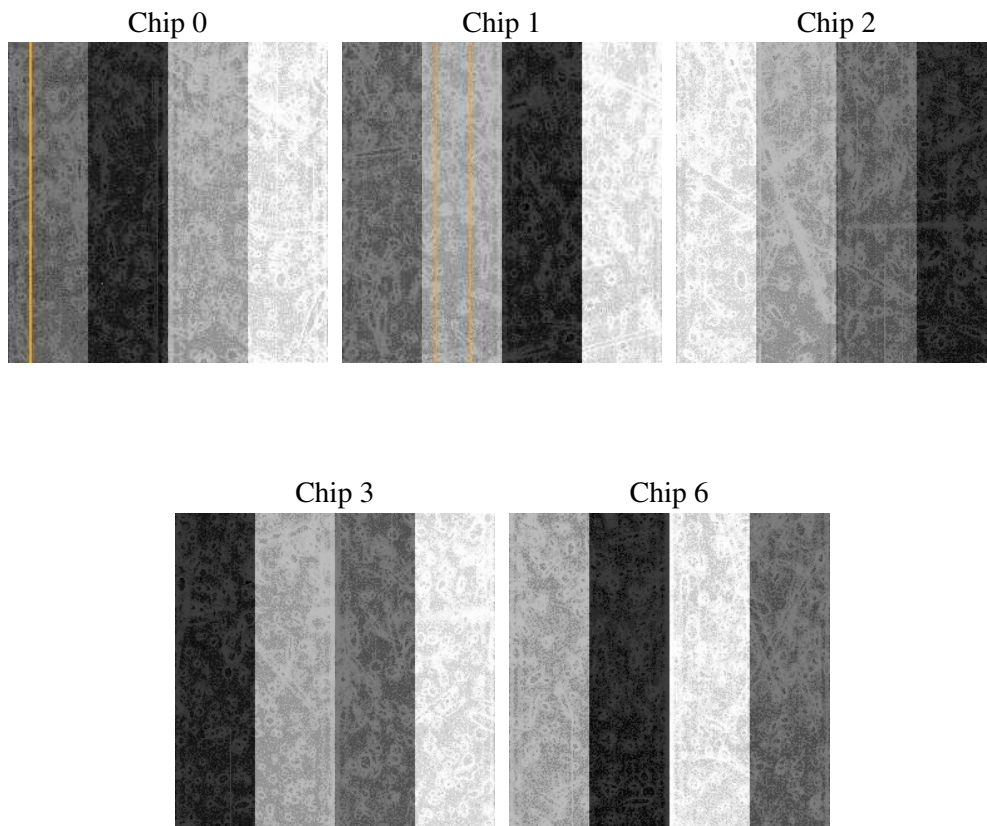
2 OBI

2.1 OBI

2.1.1 Images



2.1.2 Bias



2.1.3 Parameters

obi_num	1
ascdsver	7.6.8
caldsver	3.2.2
date	2006-07-30T08:51:22
revision	2

sched_exp_time	4800.000000
ontime	4582.7255934477
ontime0	4582.7255934477
ontime1	4582.7256233394
ontime2	4582.7255934477
ontime3	4582.7255934477
ontime6	4582.7256133556
l1events	117464

2.1.4 Events

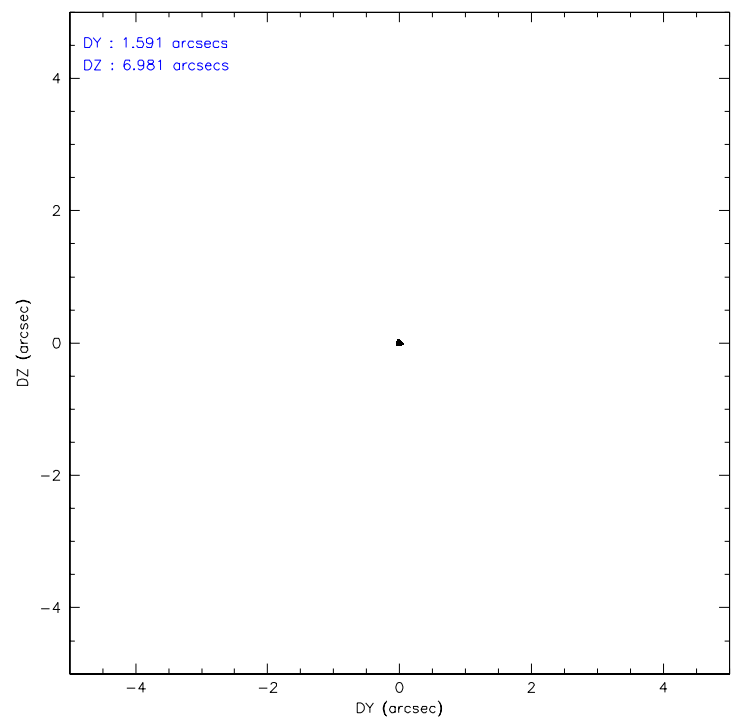
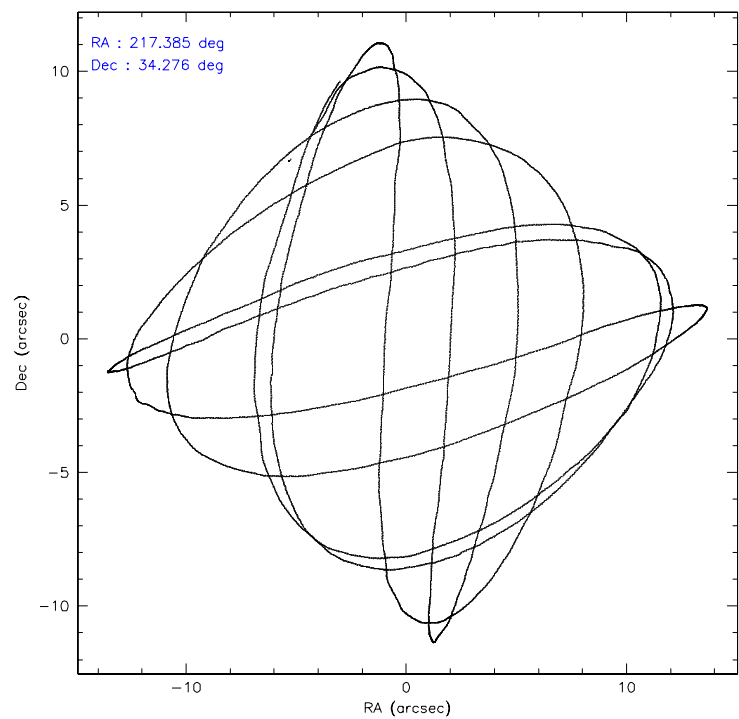
	ccd 0	ccd 1	ccd 2	ccd 3	ccd 6
level 1 events	21794	21037	25164	24249	25220
rejected events	19382	18592	22812	21865	22720
rejected %	88%	88%	90%	90%	90%

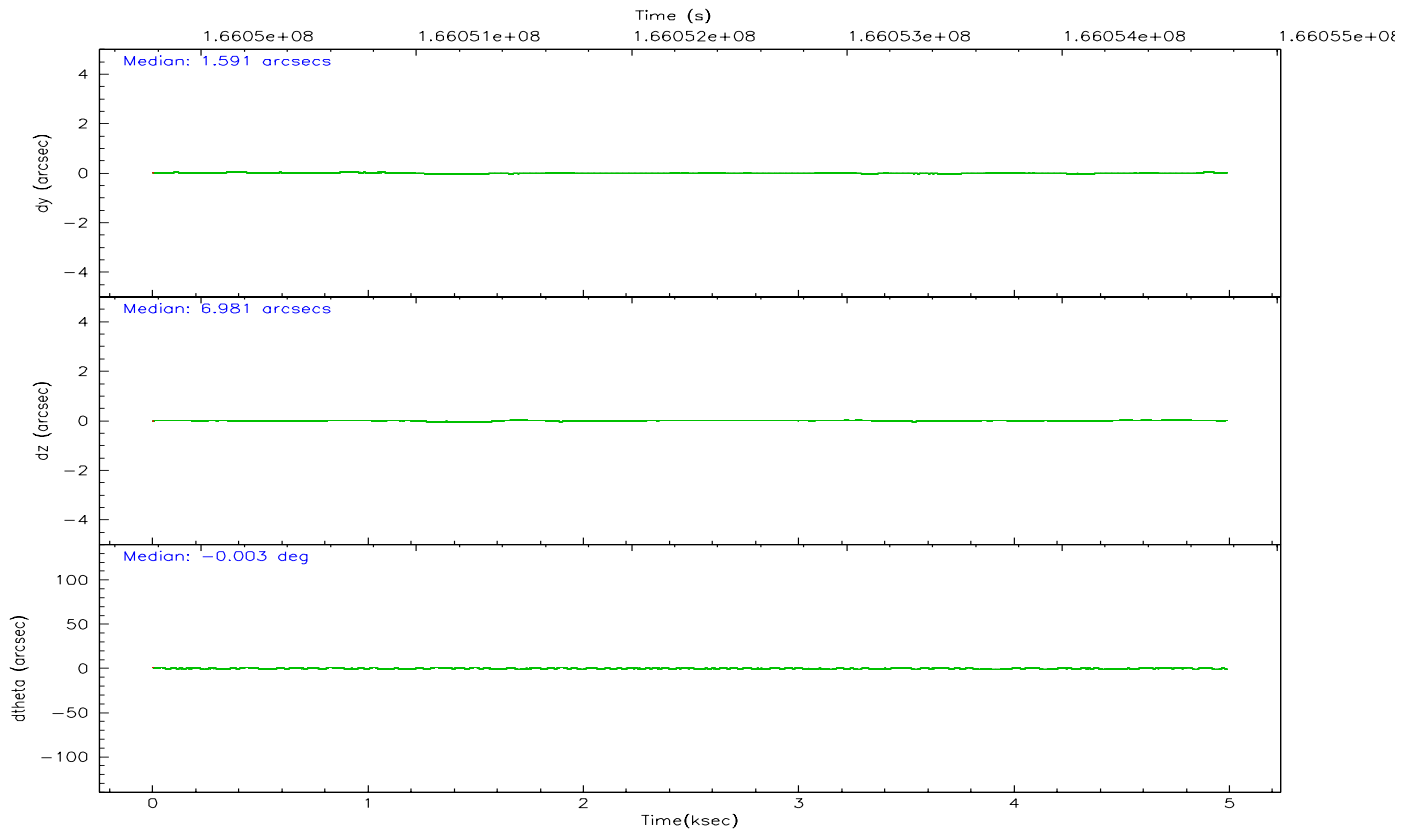
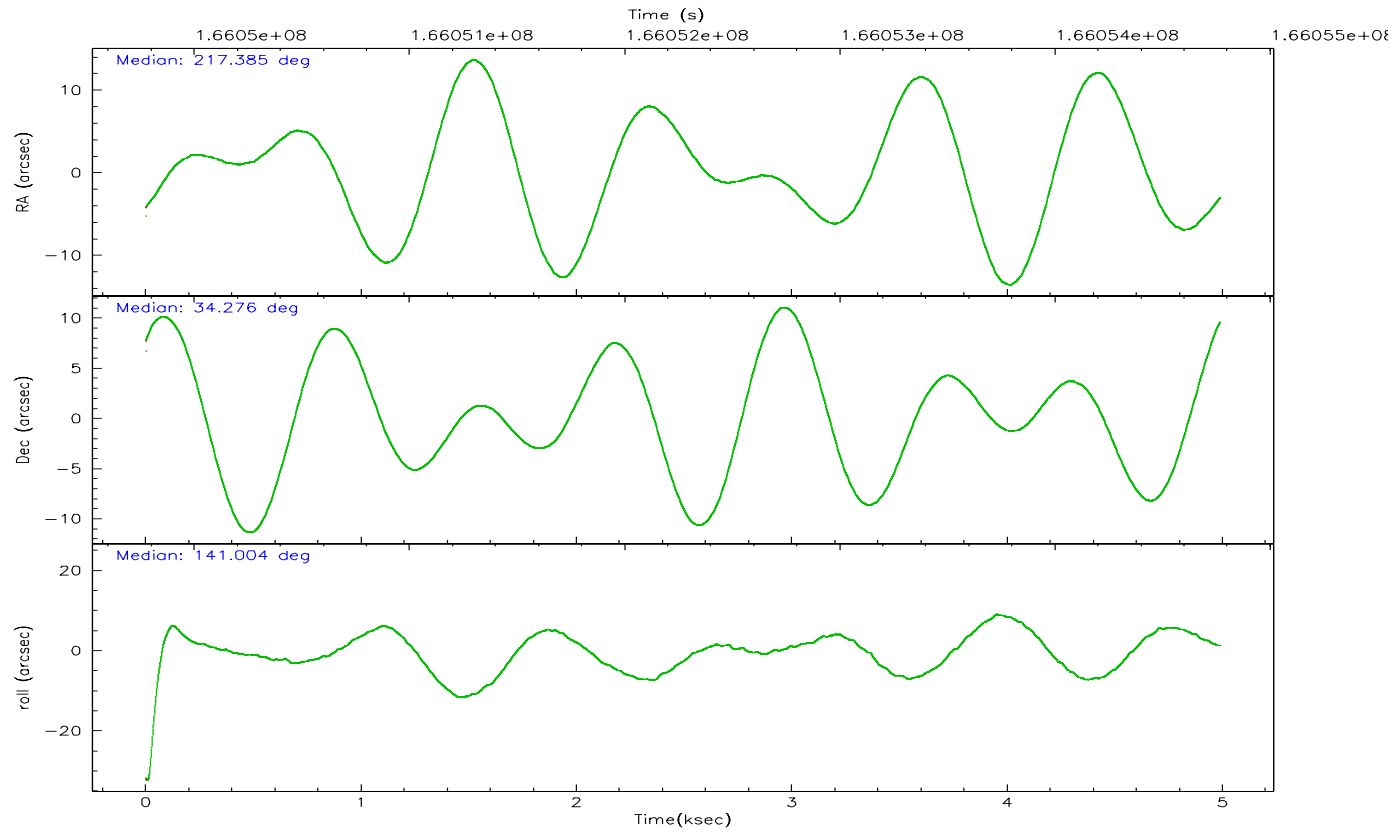
	ccd 0	ccd 1	ccd 2	ccd 3	ccd 6
grade 0 events	948	867	864	974	968
	4%	4%	3%	4%	3%
grade 1 events	12	10	13	16	7
	0%	0%	0%	0%	0%
grade 2 events	530	499	538	484	533
	2%	2%	2%	1%	2%
grade 3 events	253	295	257	267	261
	1%	1%	1%	1%	1%
grade 4 events	248	294	263	226	253
	1%	1%	1%	0%	1%
grade 5 events	689	718	647	787	706
	3%	3%	2%	3%	2%
grade 6 events	434	496	431	435	489
	1%	2%	1%	1%	1%
grade 7 events	18680	17858	22151	21060	22003
	85%	84%	88%	86%	87%

2.2 Compared Parameters

Parameter	Planned	Actual	Parameter	Planned	Actual
Instrument	ACIS	ACIS	Obspar format version number	6	6
Detector	ACIS-01236	ACIS-01236	Obspar file type	PREDICTED	ACTUAL
Grating	NONE	NONE	Obspar update status	NONE	UPDATED
Data mode	VFAINT	VFAINT	On-chip summing requested	N	N
Observation mode	POINTING	POINTING	Subarray requested	NONE	NONE
Pointing RA	217.417193	217.3844375542839	Alternating exposures requested	N	N
Pointing Dec	34.271618	34.27575941543574	Primary exposure time	0.000000	3.1
Pointing Roll	140.783048	141.0100650628305			
SIM focus pos (mm)	-0.782348	-0.7809083437167272			
SIM defocus (mm)	0	0.001439871863259334			
SIM translation stage pos (mm)	-233.592463	-233.5874344608287			
SIM translation stage offset (mm)	0	-0.005018542100998502			
Observation start time	166049965.184000	166049589.49025			
Observation start date	2003-04-06T20:58:21	2003-04-06T20:53:09			
Observation end time	166054765.184000	166054899.50297			
Observation end date	2003-04-06T22:18:21	2003-04-06T22:21:39			
Read mode	TIMED	TIMED			

2.3 Aspect



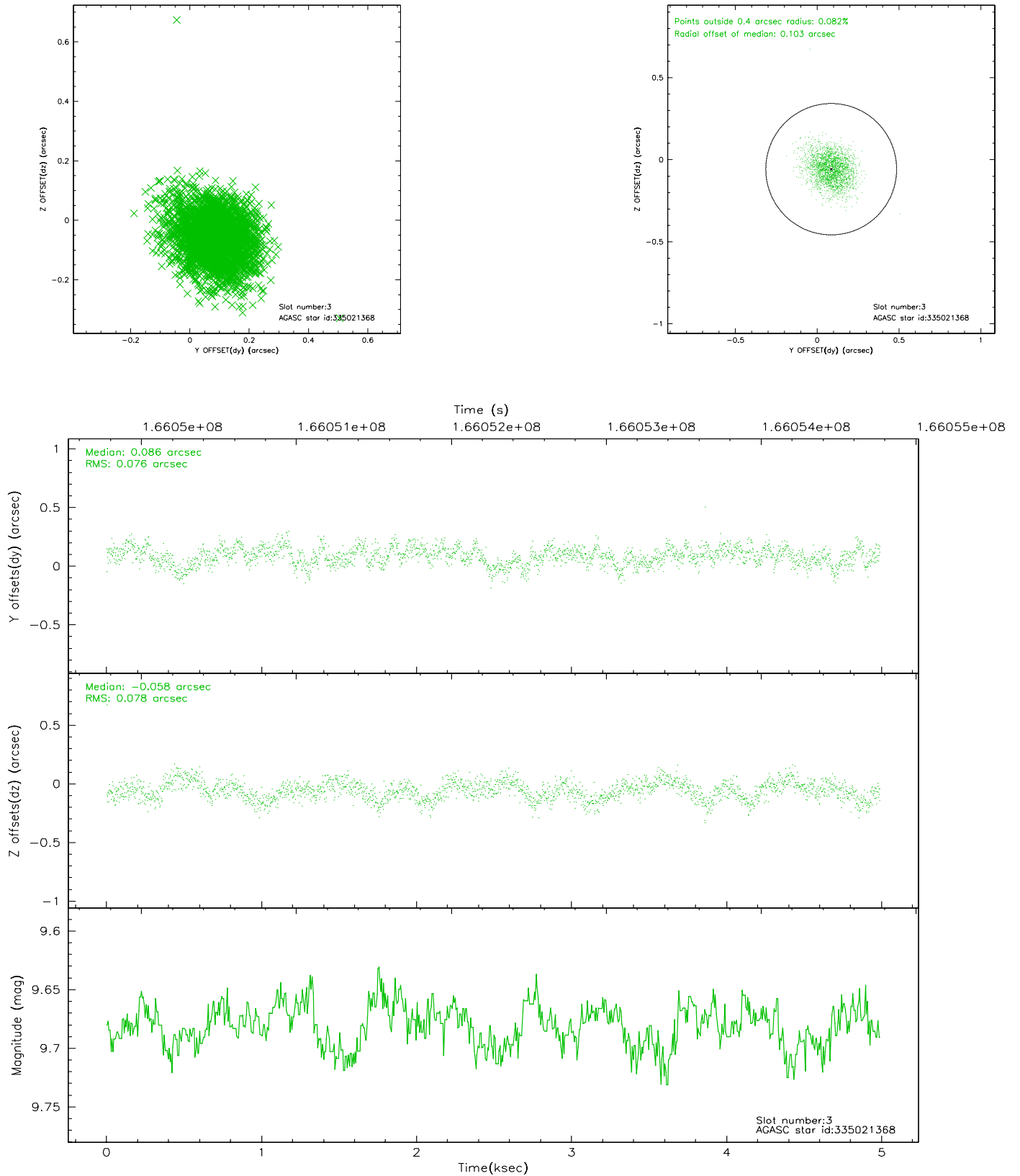


Slot Statistics

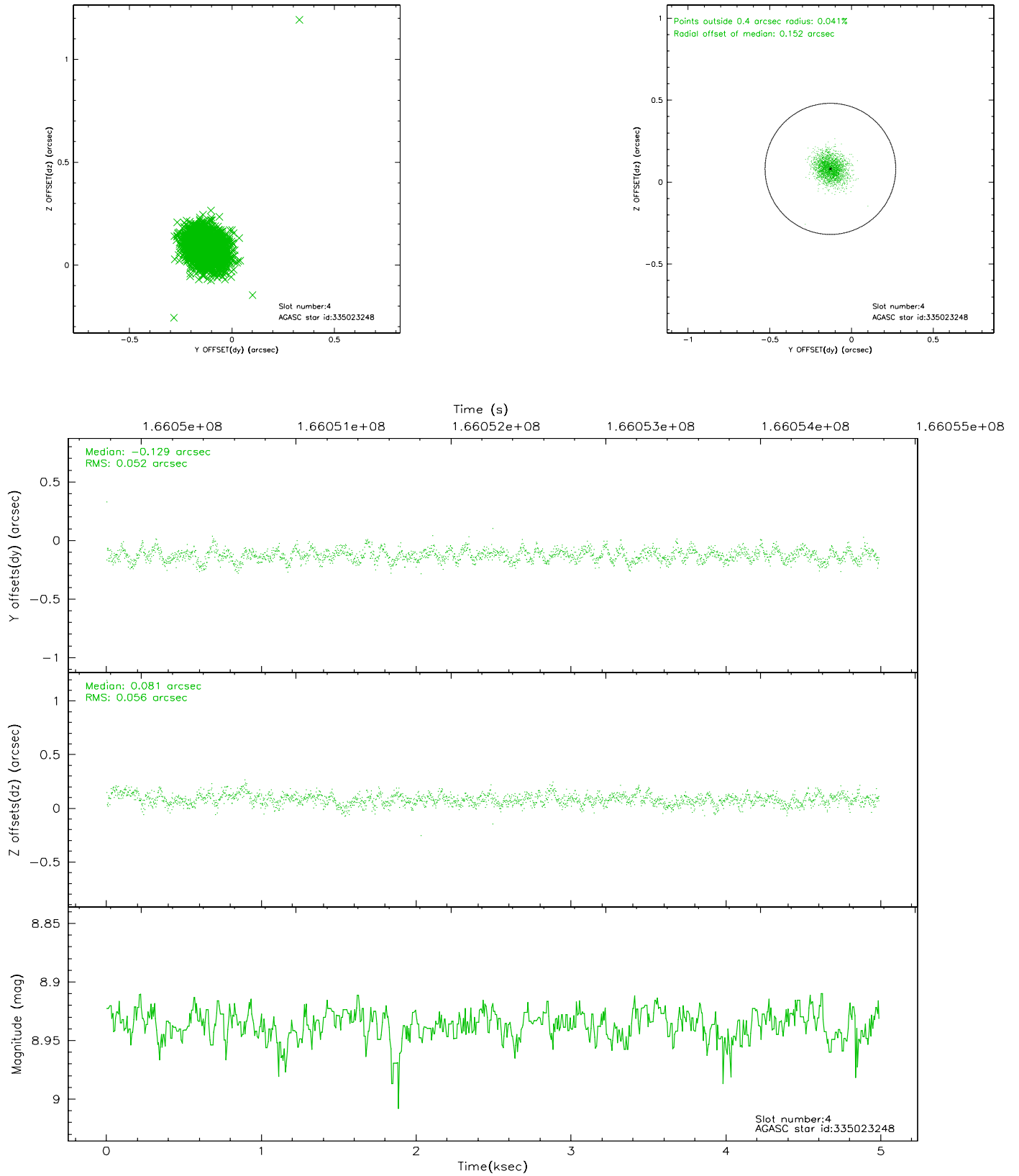
slot	status	id	mag	n_pts	med_dy	med_dz	dr1	dr2	ra	dec	mean_y	mean_z
0	FID	ACIS-I-1	7.25	1217	0.035	-0.017	0.006	0.011	0.000000	0.000000	938.30	-830.37
1	FID	ACIS-I-5	7.24	1217	0.092	0.126	0.006	0.010	0.000000	0.000000	-1809.12	1066.59
2	FID	ACIS-I-6	7.25	1217	-0.218	-0.038	0.007	0.011	0.000000	0.000000	402.21	1712.37
3	GUIDE	335021368	9.68	2432	0.086	-0.058	0.115	0.185	217.529643	33.934817	-1026.41	726.97
4	GUIDE	335023248	8.94	2434	-0.129	0.081	0.076	0.125	217.634832	34.944512	1034.47	-2282.67
5	GUIDE	335025848	9.72	2434	0.021	-0.153	0.110	0.174	217.530531	33.778292	-1384.91	1160.41
6	GUIDE	335028696	9.16	2434	0.047	0.042	0.075	0.124	217.260519	33.844112	-610.29	1488.99
7	GUIDE	335417968	9.40	2430	-0.029	0.088	0.096	0.165	217.358149	35.055285	1918.88	-2074.66

2.4 Star Slots

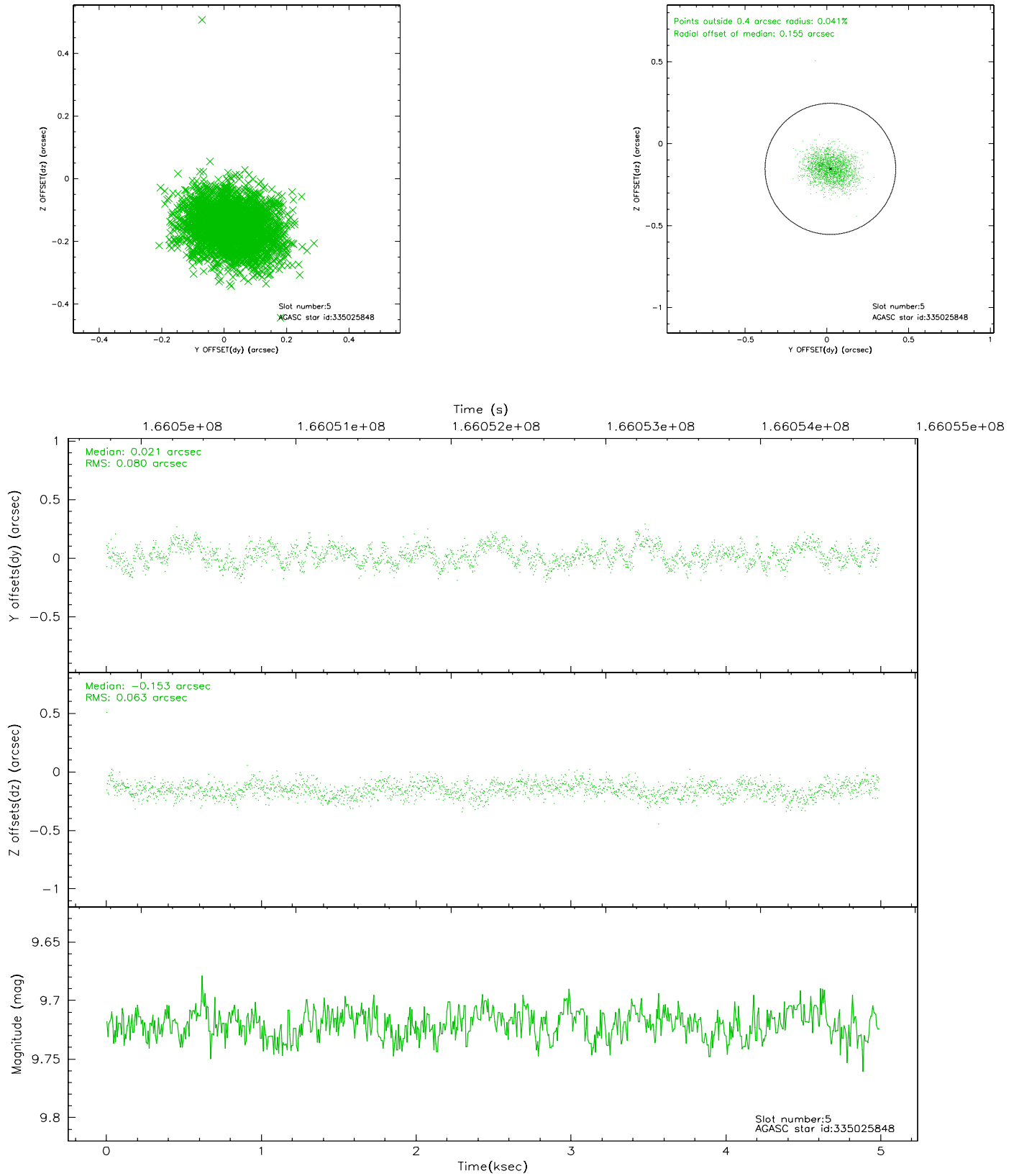
2.4.1 Slot 3



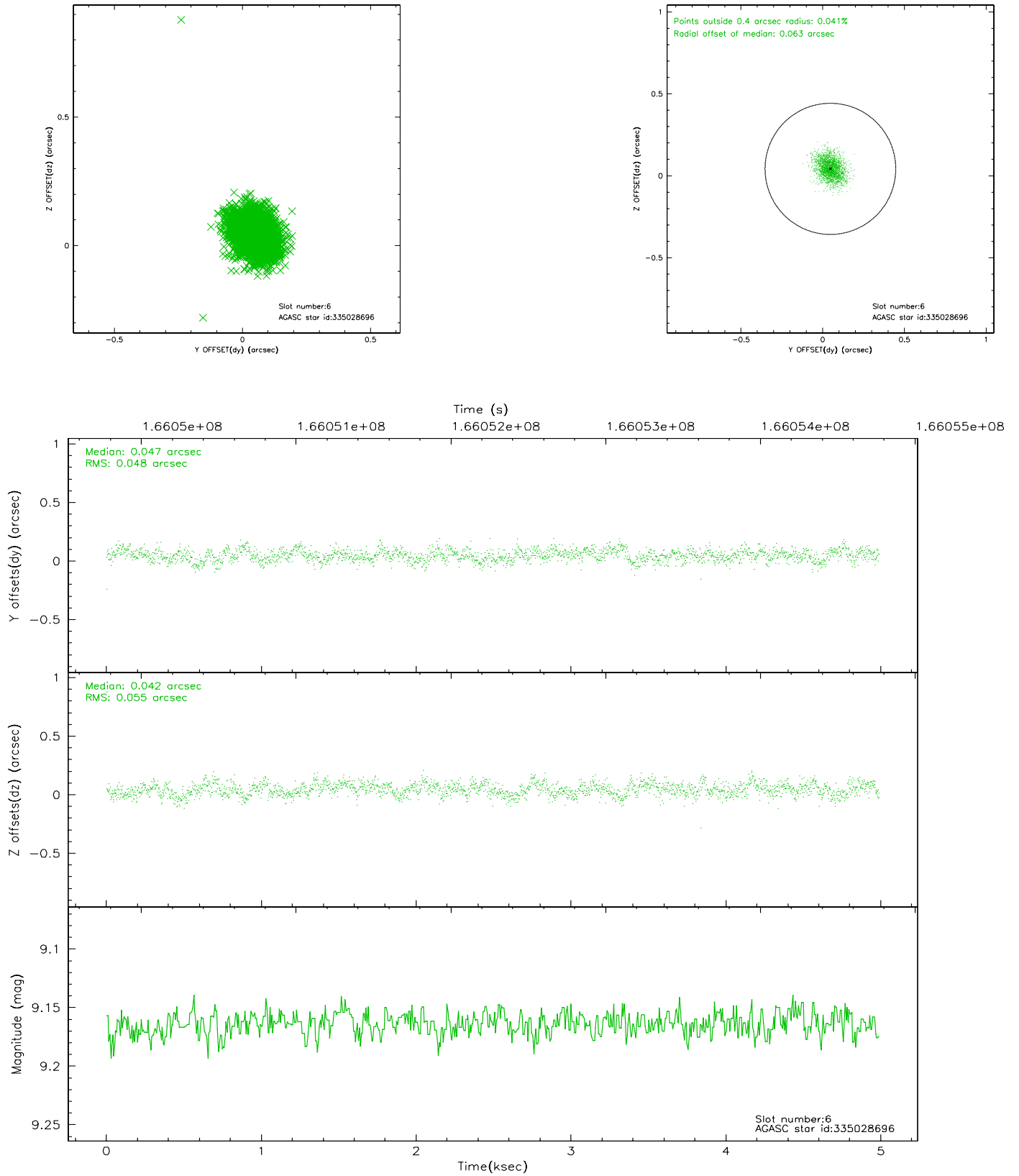
2.4.2 Slot 4



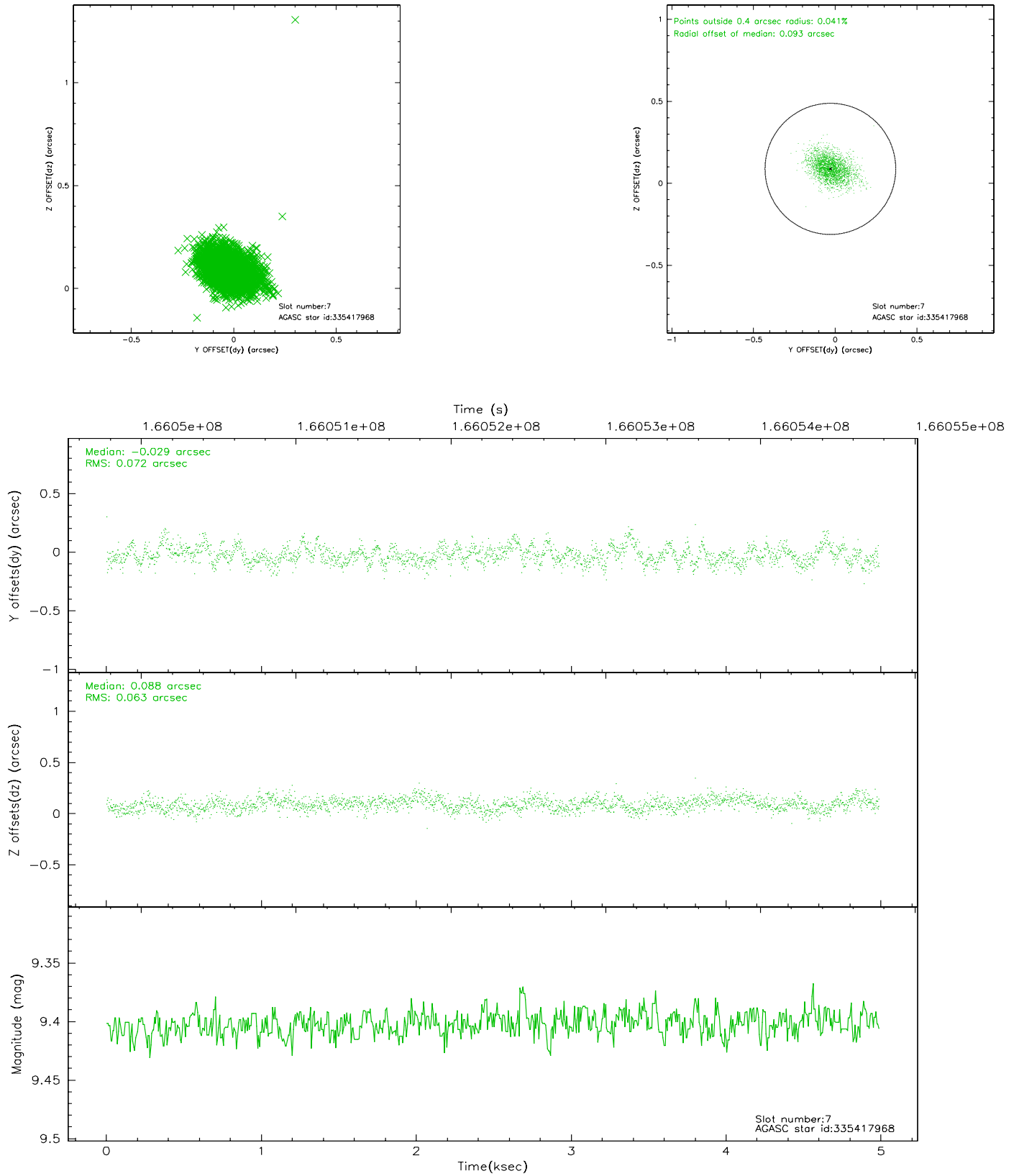
2.4.3 Slot 5



2.4.4 Slot 6

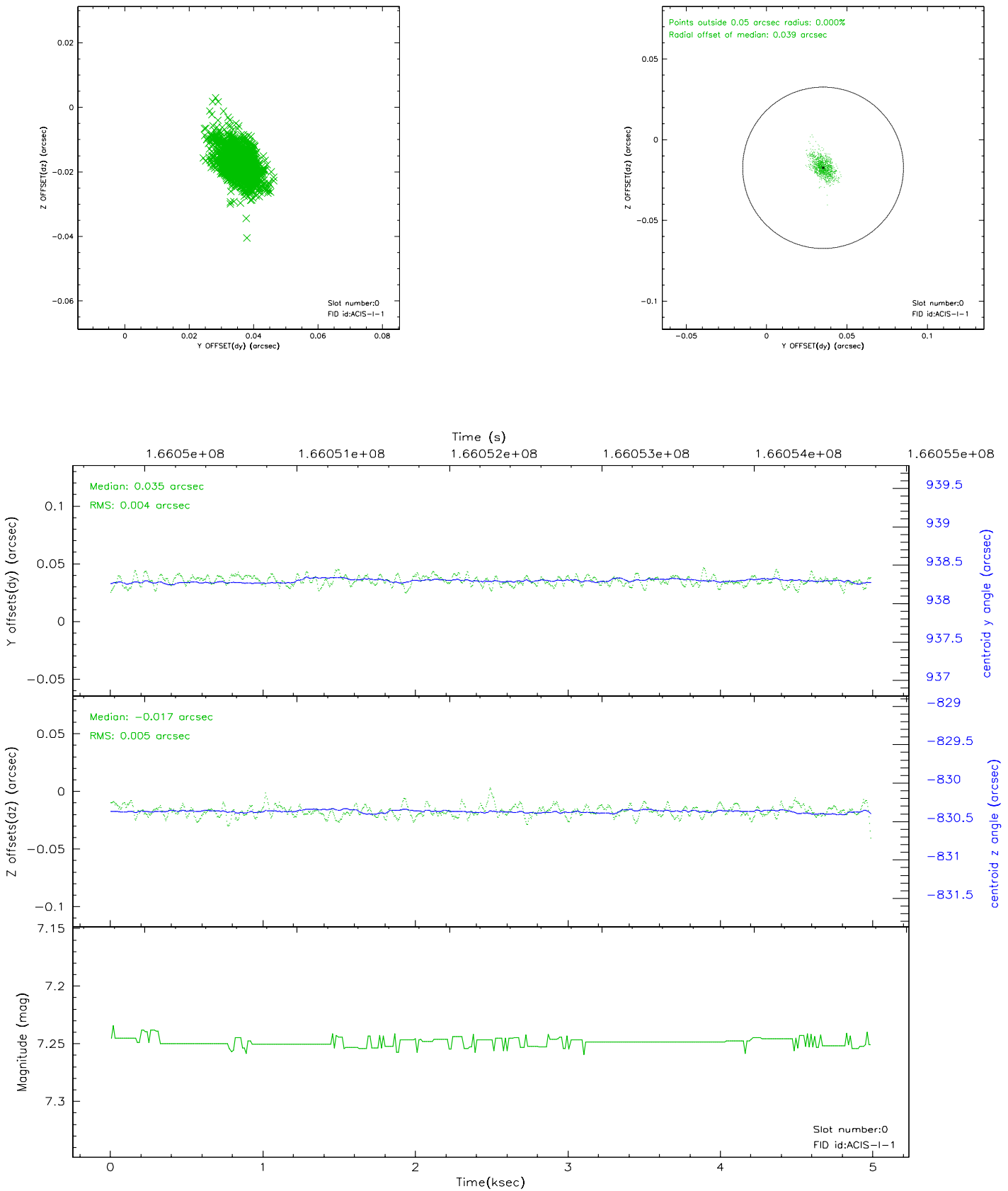


2.4.5 Slot 7

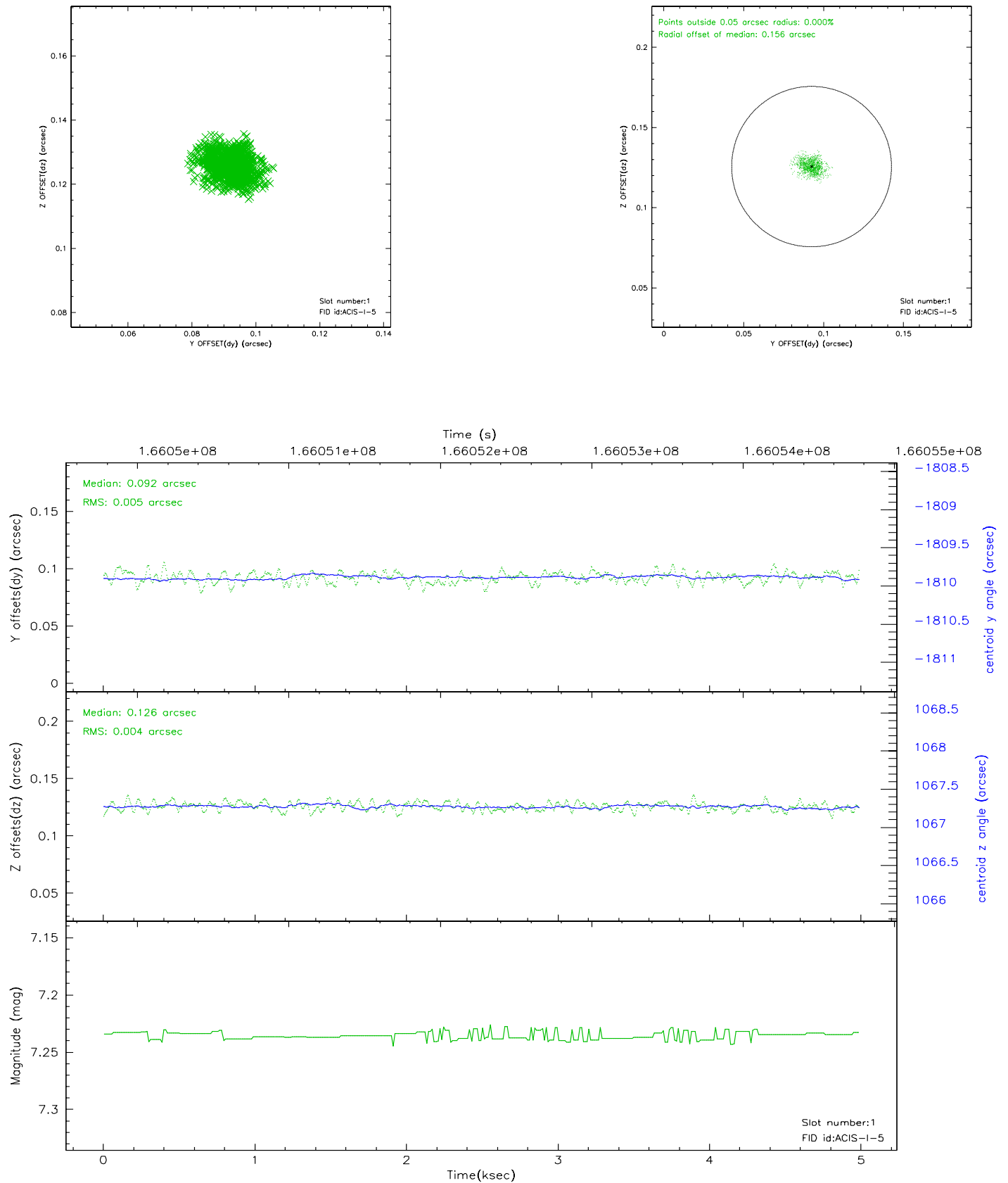


2.5 FID Slots

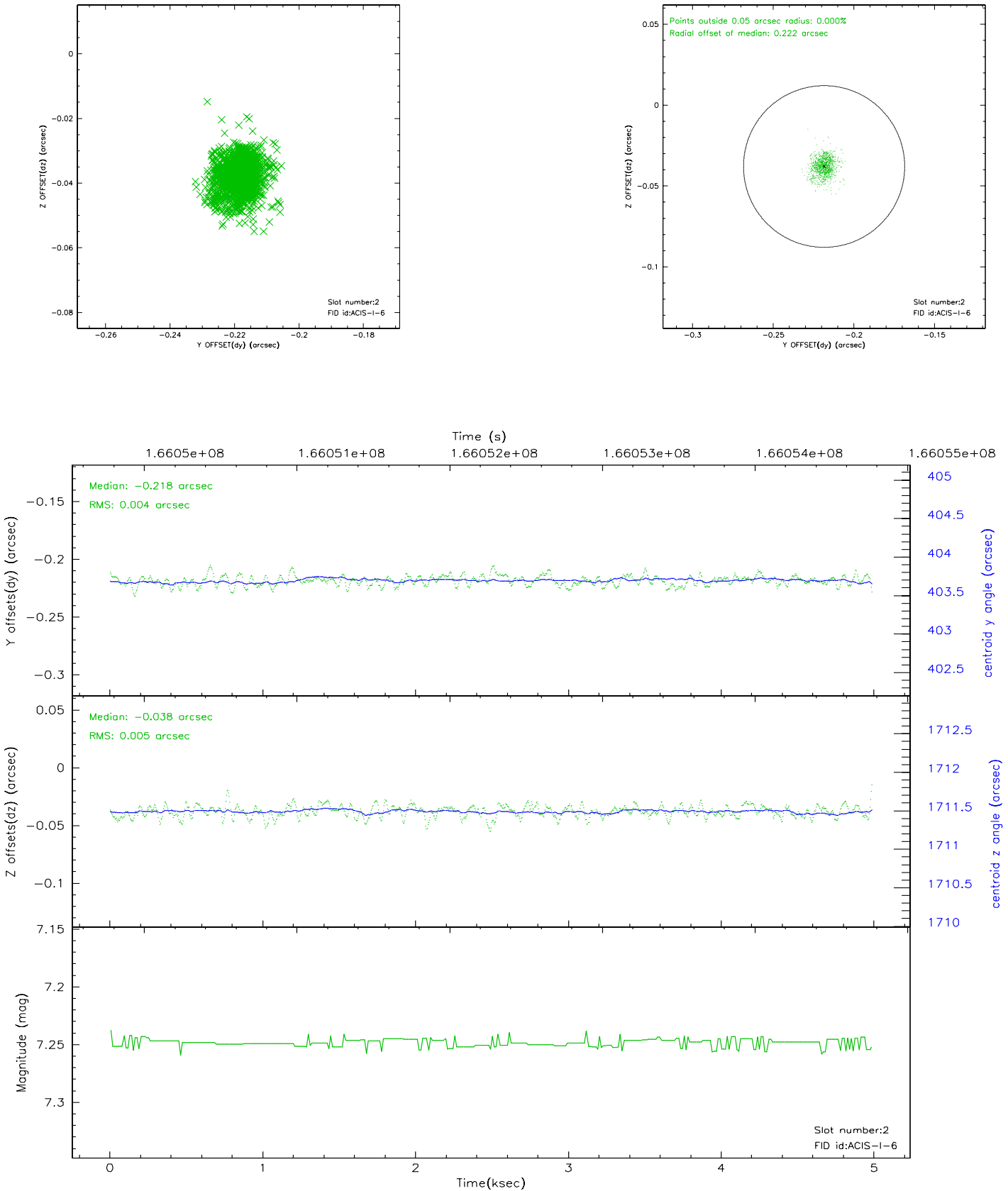
2.5.1 Slot 0



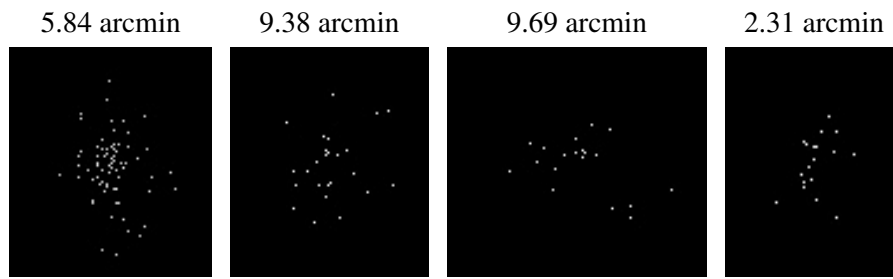
2.5.2 Slot 1



2.5.3 Slot 2



3 Point Sources



A Summary

A.1 Status

V&V Scientist	Jen Lauer
V&V Date (YYYY-MM-DD)	2006.07.30
V&V Edition	1
V&V Disposition and Status	OK
V&V Charge Time	4.578

A.2 Comments