

V&V Reference Report

L2 ASCDS Version : 7.6.8

Observation 3648 - L2 Version 001
Chandra X-Ray Center

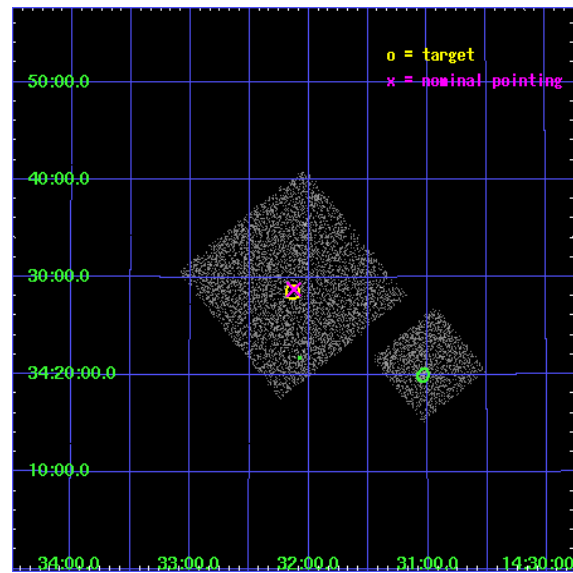
L2 Processing Date : Jul 29 2006

Contents

1	Front	2
2	OBI	3
2.1	OBI	3
2.1.1	Images	3
2.1.2	Bias	3
2.1.3	Parameters	4
2.1.4	Events	4
2.2	Compared Parameters	5
2.3	Aspect	6
2.4	Star Slots	9
2.4.1	Slot 3	9
2.4.2	Slot 4	10
2.4.3	Slot 5	11
2.4.4	Slot 6	12
2.4.5	Slot 7	13
2.5	FID Slots	14
2.5.1	Slot 0	14
2.5.2	Slot 1	15
2.5.3	Slot 2	16
3	Point Sources	17
A	Summary	18
A.1	Status	18
A.2	Comments	18

1 Front

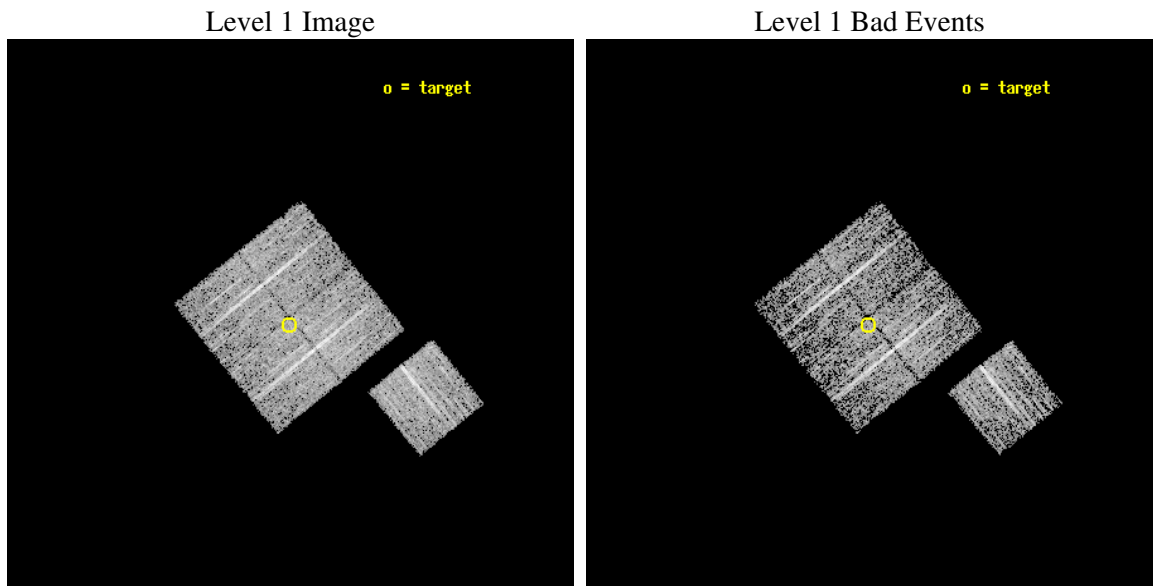
seq_num	900248
obs_id	3648
title	CHANDRA LARGE SCALE SURVEY OF THE NOAO BOOTES DEEP FIELD
observer	Dr. Stephen Murray
object	NOAO FIELD F64
dtcycle	0
cycle	P
ra_targ	218.034014
dec_targ	34.475388
ra_nom	218.03132829299
dec_nom	34.479466258722
roll_nom	141.01006603666
revision	3
ontime	4671.6590107679
livetime	4610.6203465669
ontime0	4674.7999910116
ontime1	4674.7999910116
ontime2	4674.7999910116
ontime3	4671.6590107679
ontime6	4668.51807037
l2events	9581



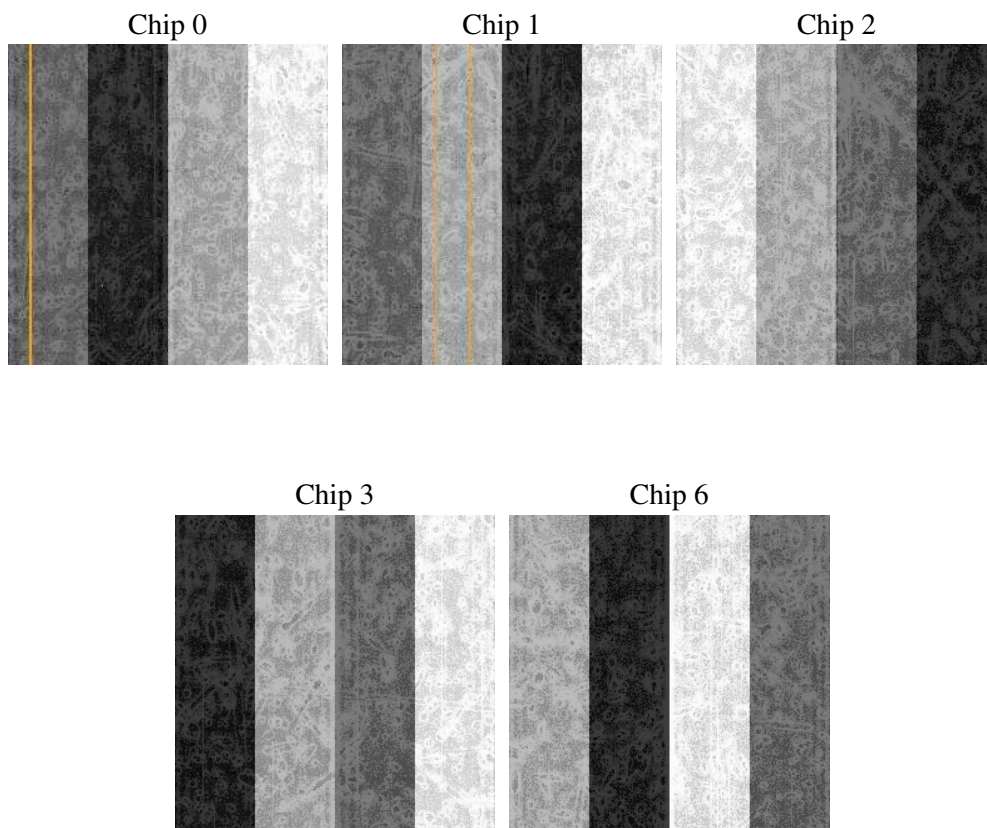
2 OBI

2.1 OBI

2.1.1 Images



2.1.2 Bias



2.1.3 Parameters

obi_num	1
ascdsver	7.6.8
caldbver	3.2.2
date	2006-07-29T21:55:57
revision	3

sched_exp_time	4900.000000
ontime	4676.9638670385
ontime0	4680.1048273444
ontime1	4680.1048472822
ontime2	4680.1048273444
ontime3	4676.9638670385
ontime6	4673.8229266405
l1events	114043

2.1.4 Events

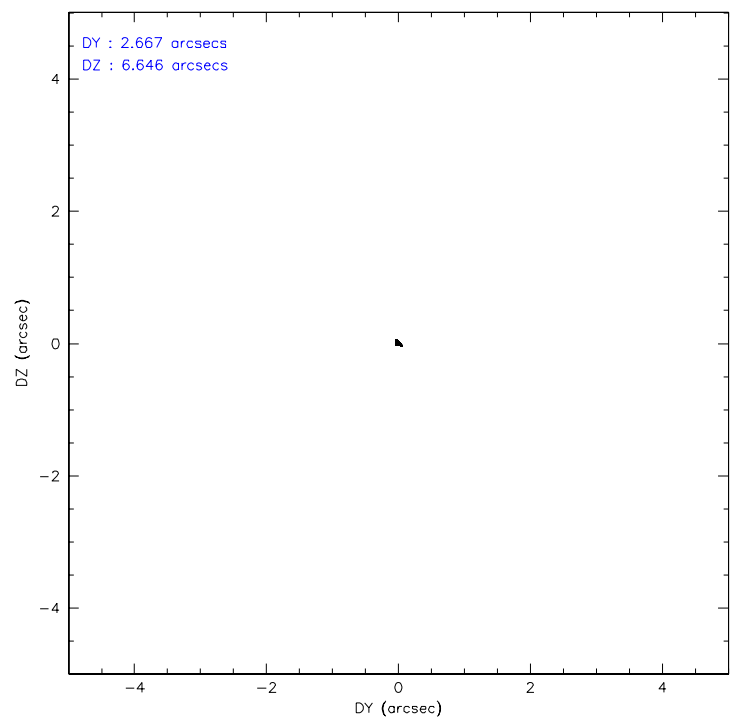
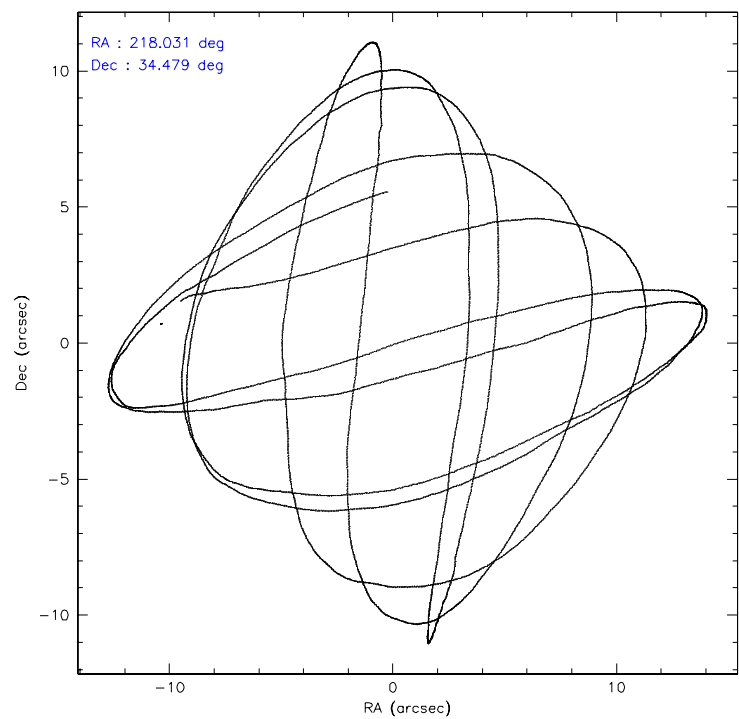
	ccd 0	ccd 1	ccd 2	ccd 3	ccd 6
level 1 events	21206	21372	24397	22947	24121
rejected events	18842	18904	22189	20702	21763
rejected %	88%	88%	90%	90%	90%

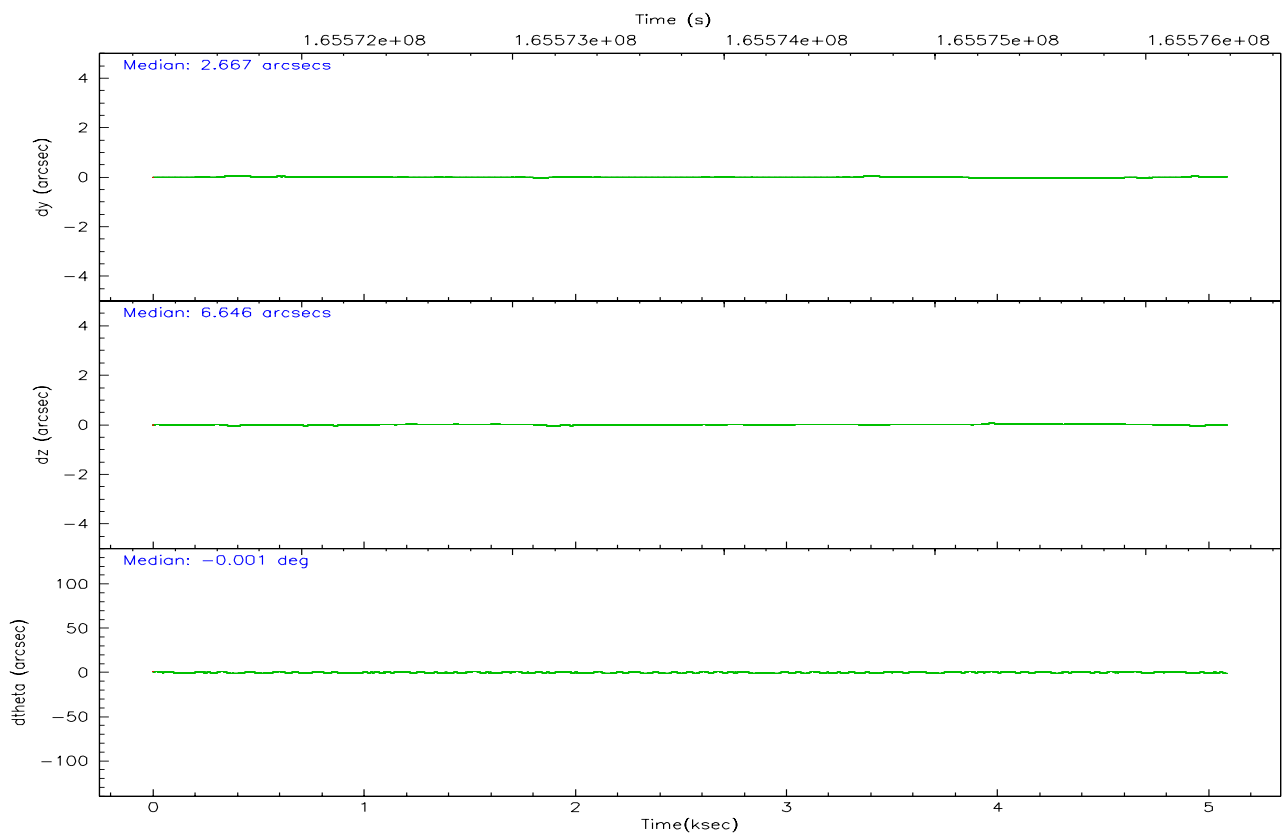
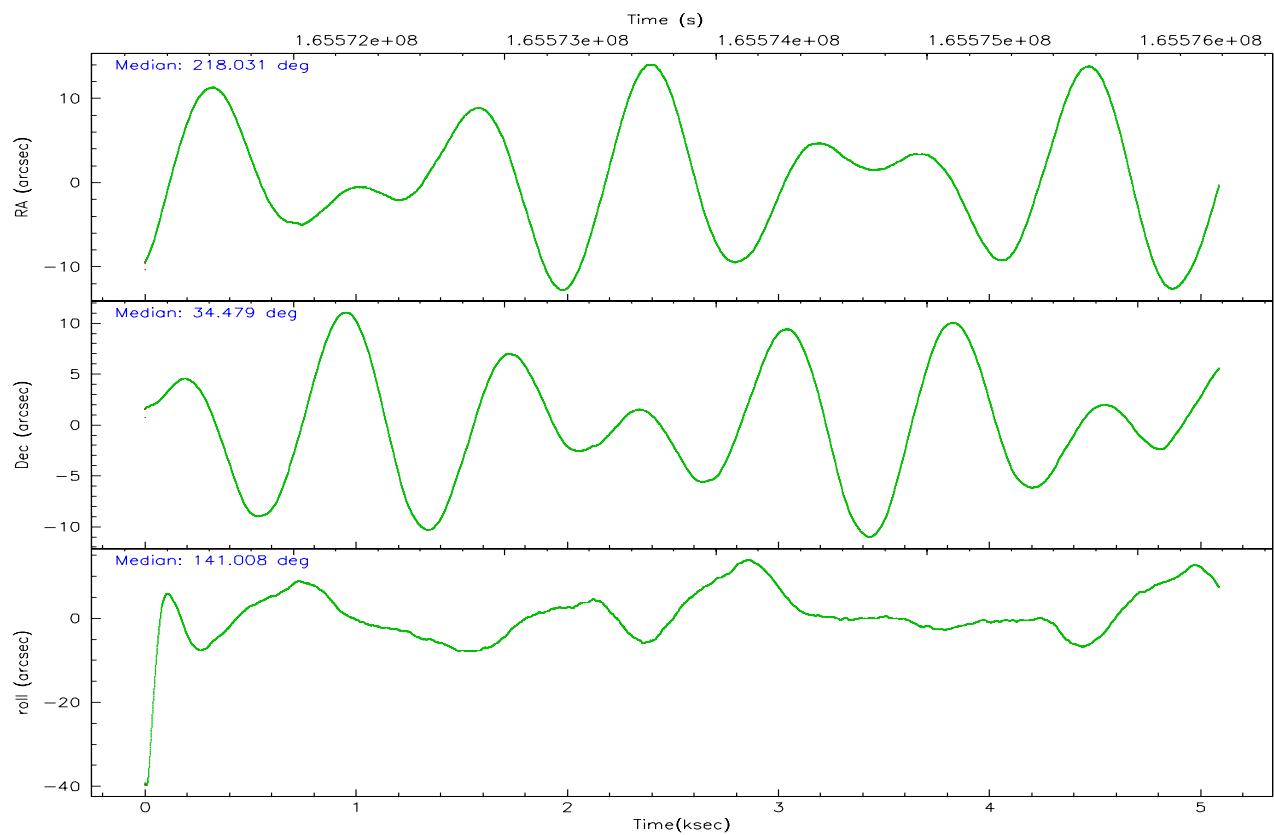
	ccd 0	ccd 1	ccd 2	ccd 3	ccd 6
grade 0 events	845	878	848	862	895
	3%	4%	3%	3%	3%
grade 1 events	16	9	14	8	21
	0%	0%	0%	0%	0%
grade 2 events	560	560	514	462	508
	2%	2%	2%	2%	2%
grade 3 events	302	295	214	246	264
	1%	1%	0%	1%	1%
grade 4 events	246	284	254	222	255
	1%	1%	1%	0%	1%
grade 5 events	649	702	673	770	748
	3%	3%	2%	3%	3%
grade 6 events	413	451	378	454	437
	1%	2%	1%	1%	1%
grade 7 events	18175	18193	21502	19923	20993
	85%	85%	88%	86%	87%

2.2 Compared Parameters

Parameter	Planned	Actual	Parameter	Planned	Actual
Instrument	ACIS	ACIS	Obspar format version number	6	6
Detector	ACIS-01236	ACIS-01236	Obspar file type	PREDICTED	ACTUAL
Grating	NONE	NONE	Obspar update status	NONE	UPDATED
Data mode	VFAINT	VFAINT	On-chip summing requested	N	N
Observation mode	POINTING	POINTING	Subarray requested	NONE	NONE
Pointing RA	218.064198	218.0313282929863	Alternating exposures requested	N	N
Pointing Dec	34.475304	34.47946625872244	Primary exposure time	0.000000	3.1
Pointing Roll	140.782917	141.0100660366576			
SIM focus pos (mm)	-0.782348	-0.7809083437167272			
SIM defocus (mm)	0	0.001439871863259334			
SIM translation stage pos (mm)	-233.592463	-233.5874344608287			
SIM translation stage offset (mm)	0	-0.005018542100998502			
Observation start time	165571484.184000	165571107.68255			
Observation start date	2003-04-01T08:03:40	2003-04-01T07:58:27			
Observation end time	165576384.184000	165576517.63278			
Observation end date	2003-04-01T09:25:20	2003-04-01T09:28:37			
Read mode	TIMED	TIMED			

2.3 Aspect



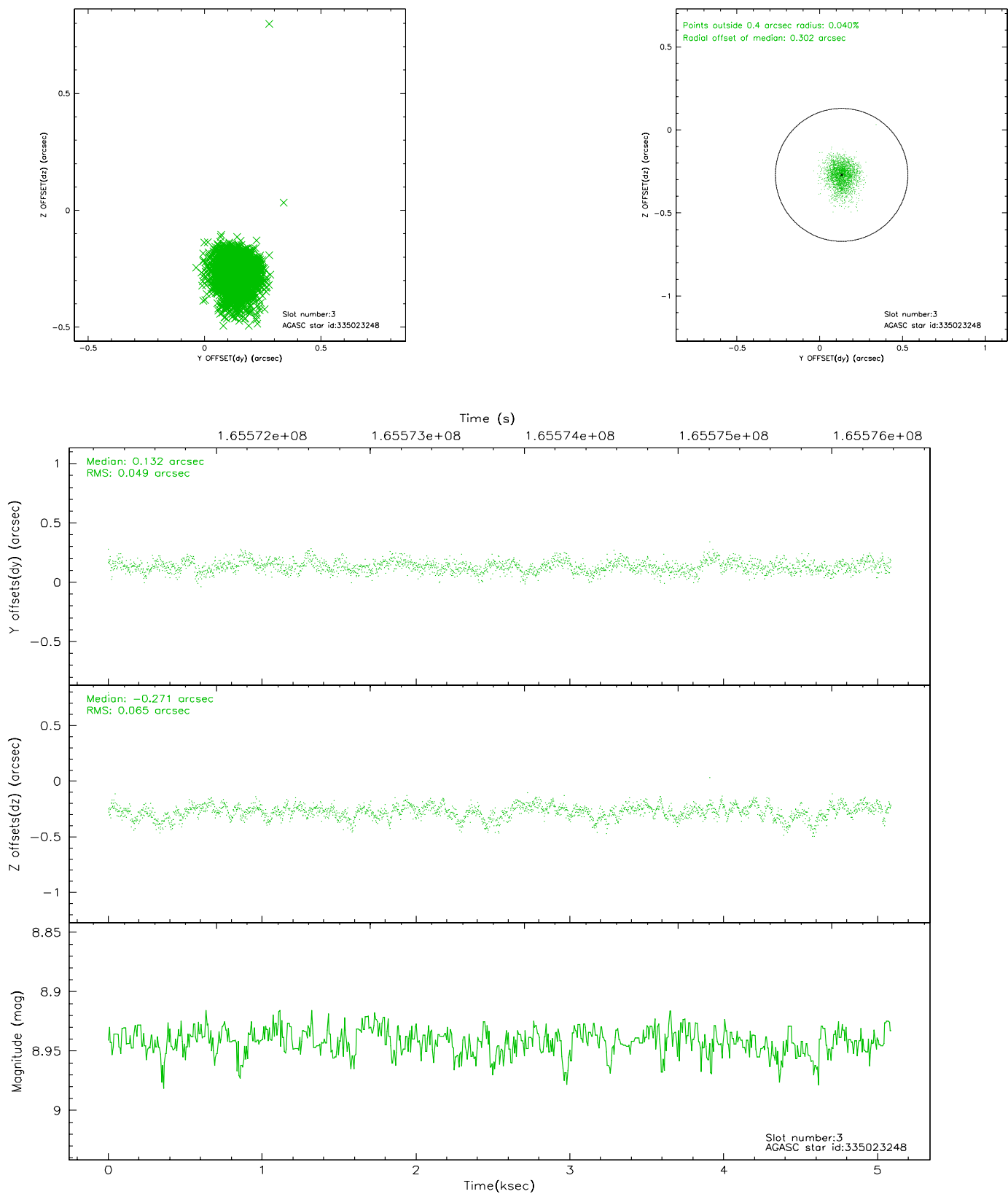


Slot Statistics

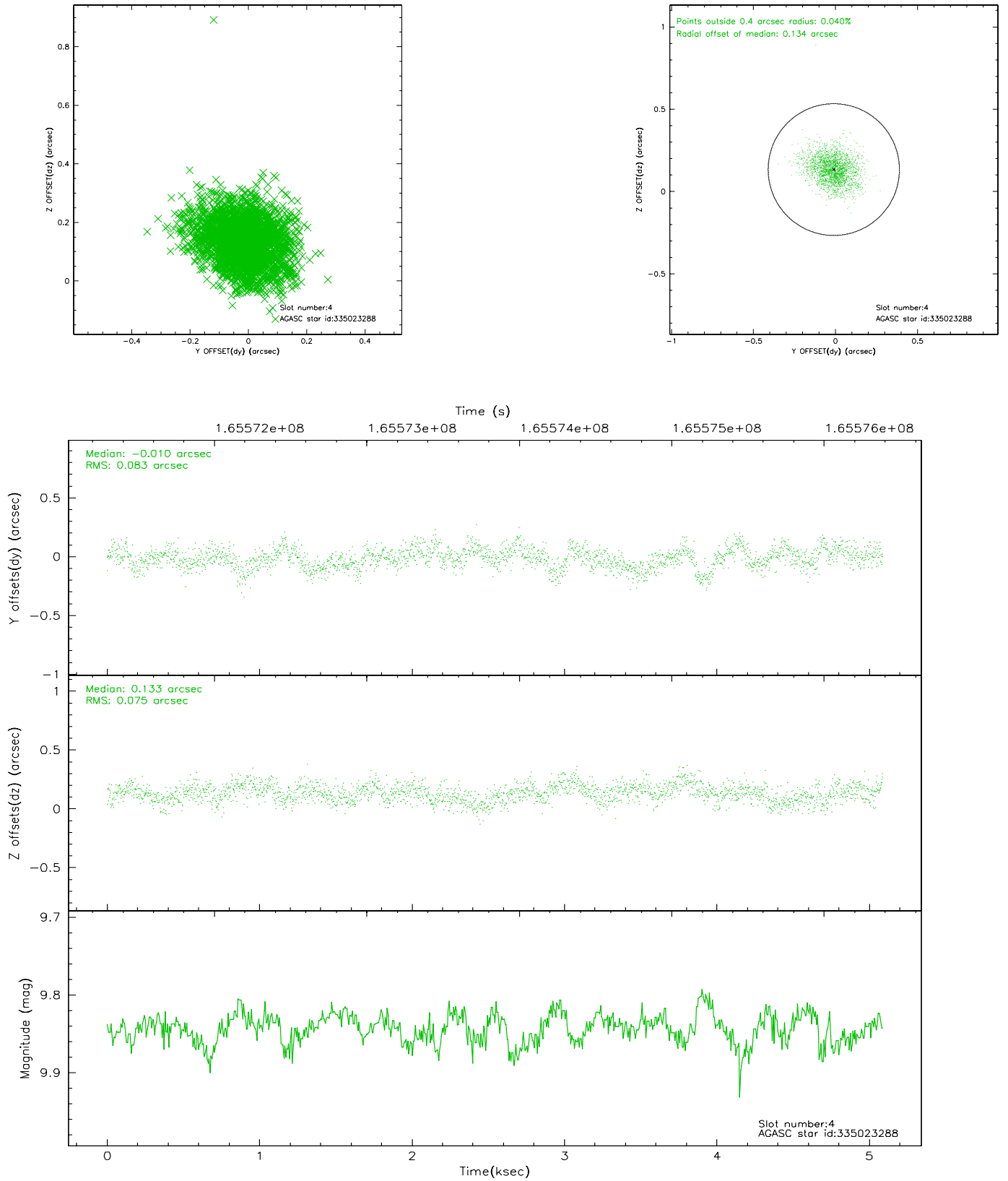
slot	status	id	mag	n_pts	med_dy	med_dz	dr1	dr2	ra	dec	mean_y	mean_z
0	FID	ACIS-I-1	7.25	1242	-0.003	0.019	0.006	0.010	0.000000	0.000000	937.12	-830.03
1	FID	ACIS-I-5	7.24	1242	-0.057	0.047	0.006	0.010	0.000000	0.000000	-1810.34	1066.94
2	FID	ACIS-I-6	7.26	1242	-0.031	0.005	0.007	0.011	0.000000	0.000000	401.39	1712.72
3	GUIDE	335023248	8.94	2482	0.132	-0.271	0.083	0.136	217.634832	34.944512	2051.70	-509.86
4	GUIDE	335023288	9.84	2482	-0.010	0.133	0.118	0.193	217.791365	34.425735	516.55	649.62
5	GUIDE	335023304	8.41	2483	-0.003	-0.119	0.080	0.130	218.883608	34.686545	-1391.77	-2130.32
6	GUIDE	335025040	9.93	2480	0.280	0.005	0.111	0.179	218.601670	34.305240	-1622.76	-540.41
7	BAD	335026200	10.67	2292	-0.429	0.264	0.198	0.352	218.096425	34.160577	-791.00	817.28

2.4 Star Slots

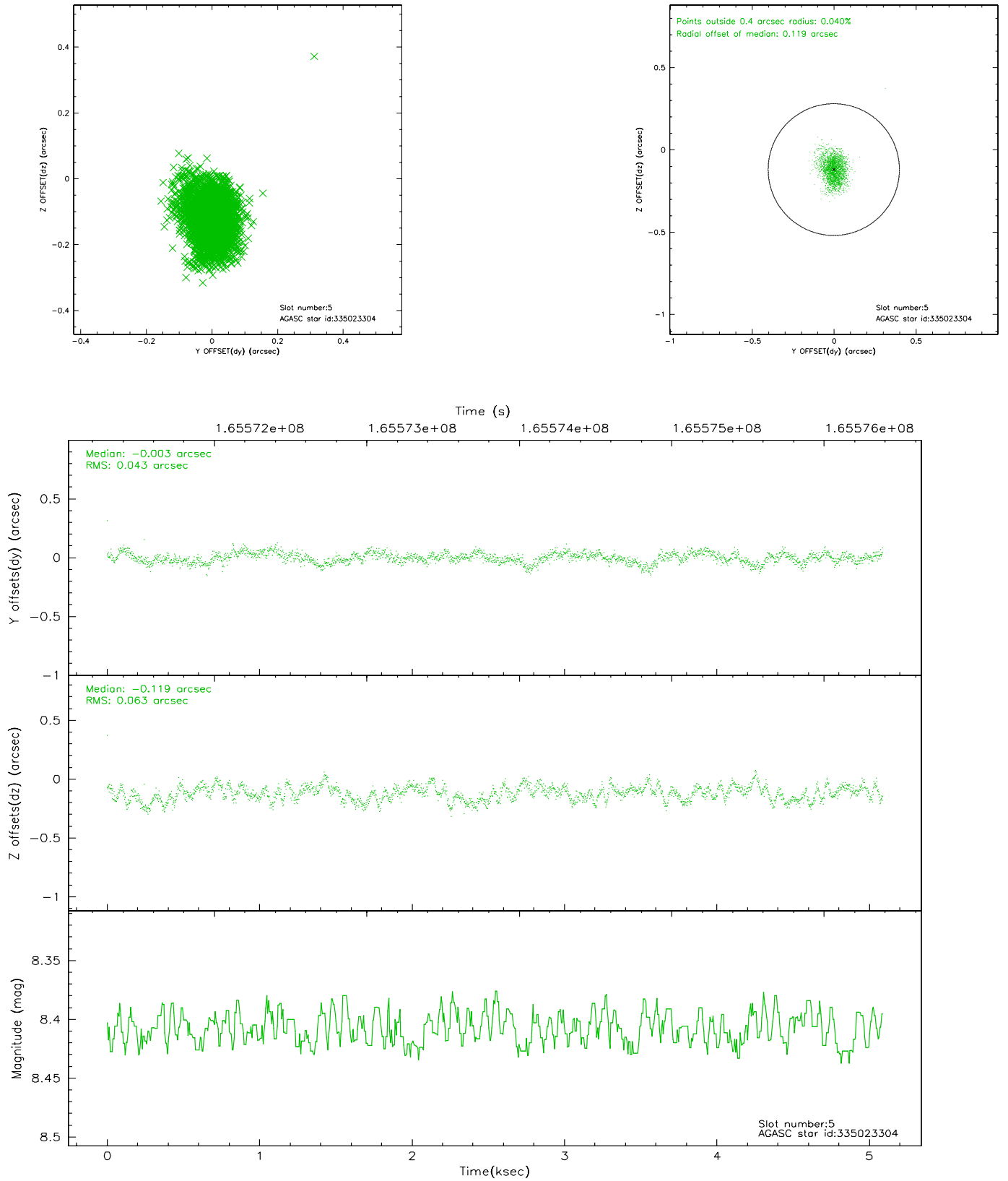
2.4.1 Slot 3



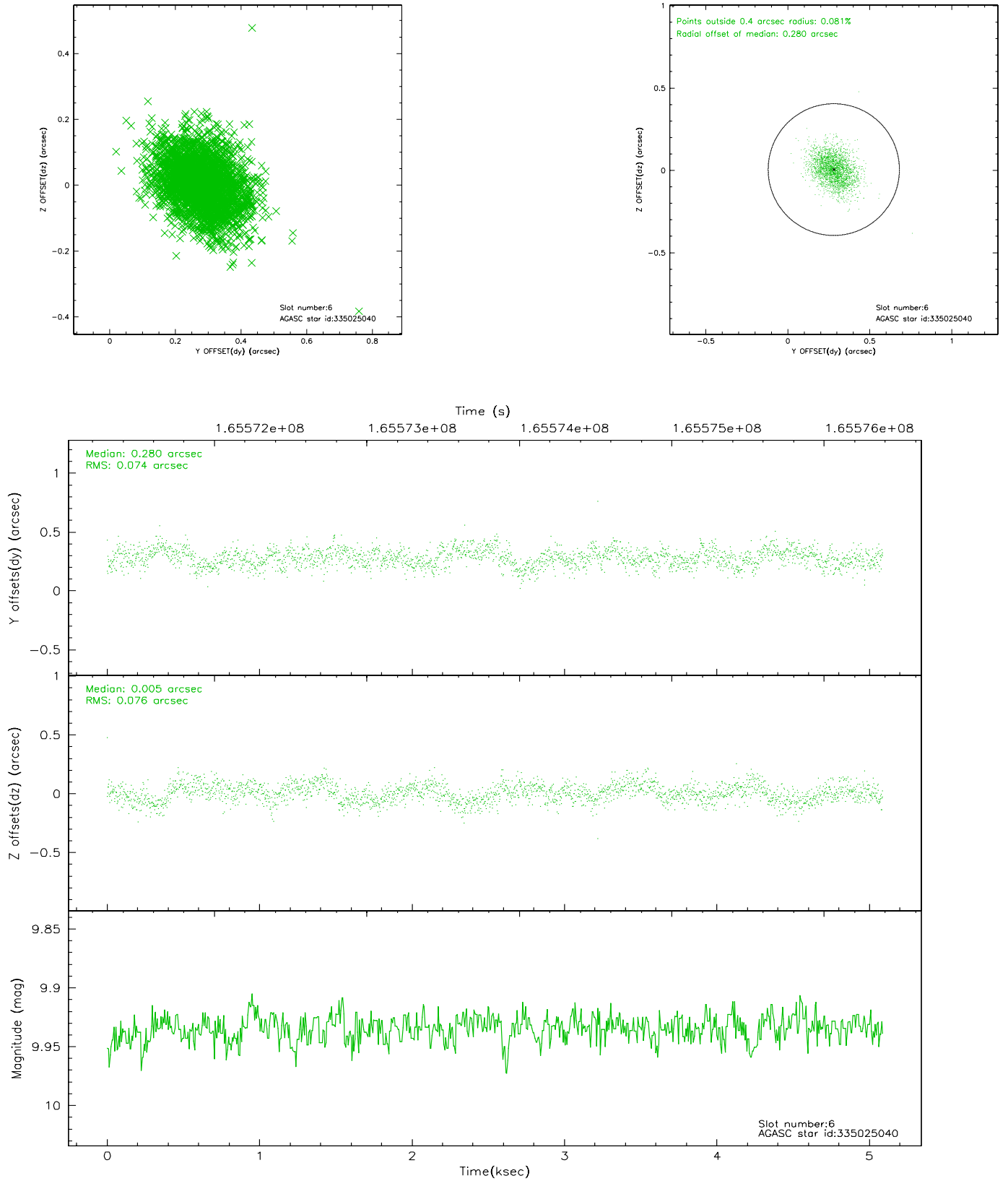
2.4.2 Slot 4



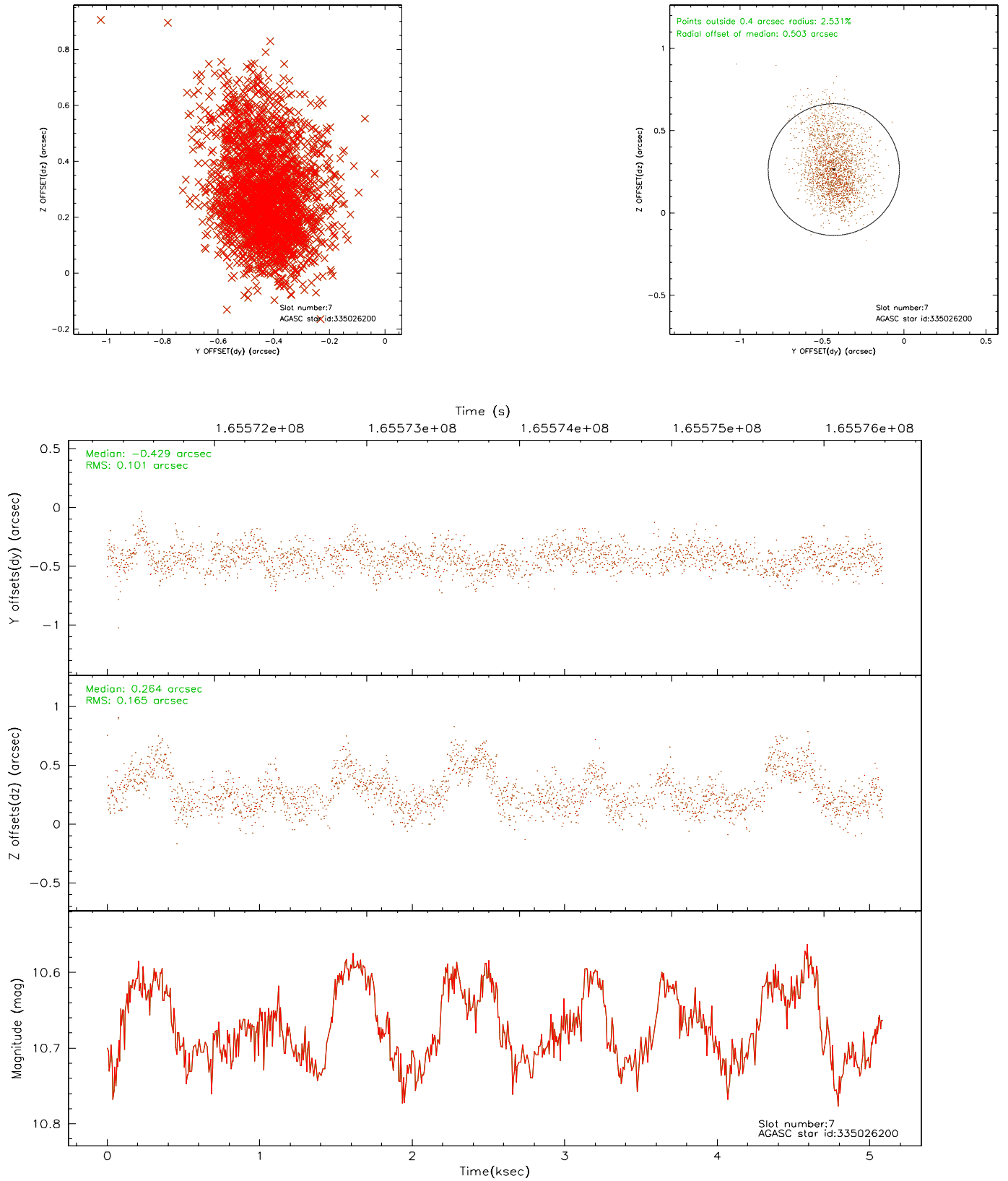
2.4.3 Slot 5



2.4.4 Slot 6

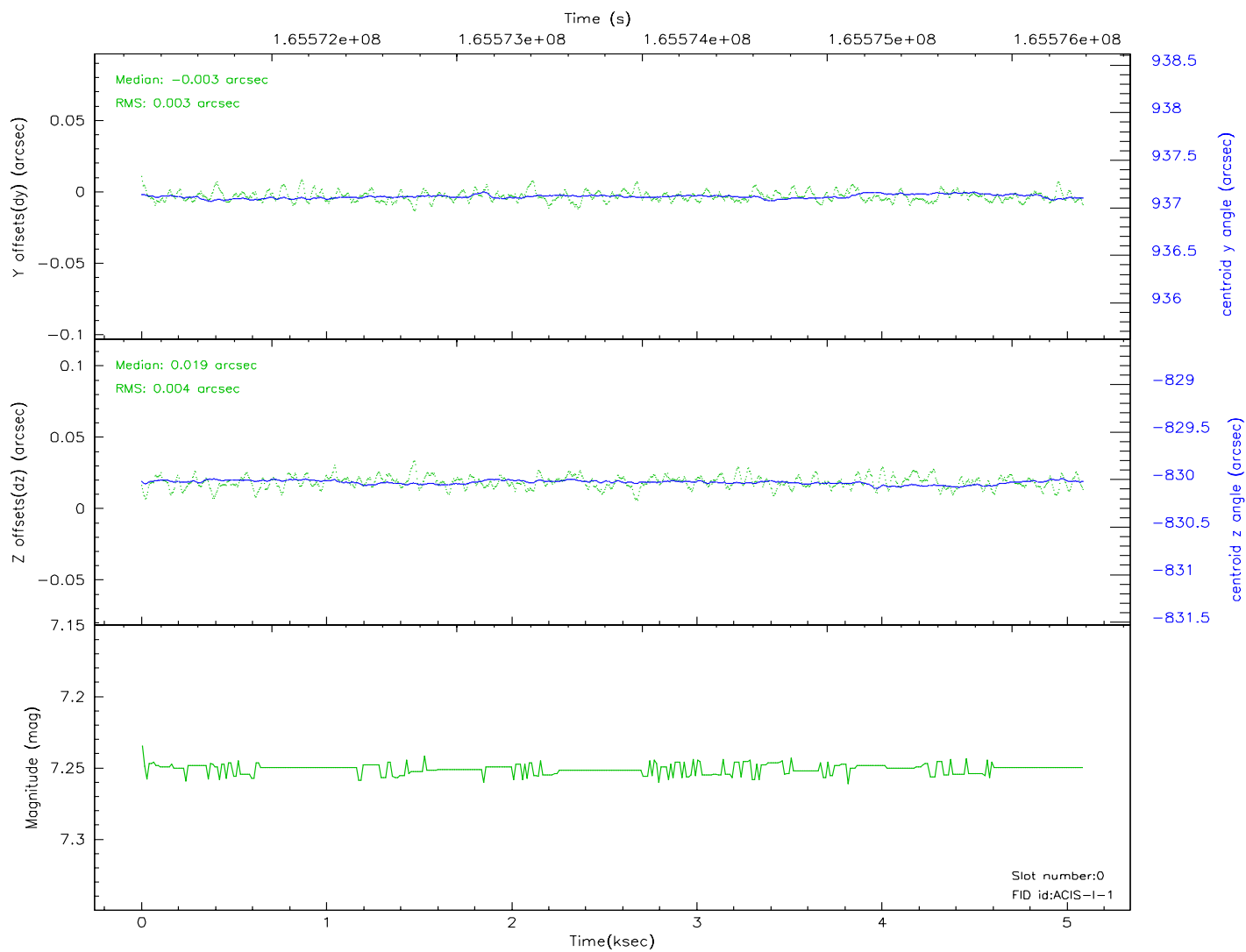
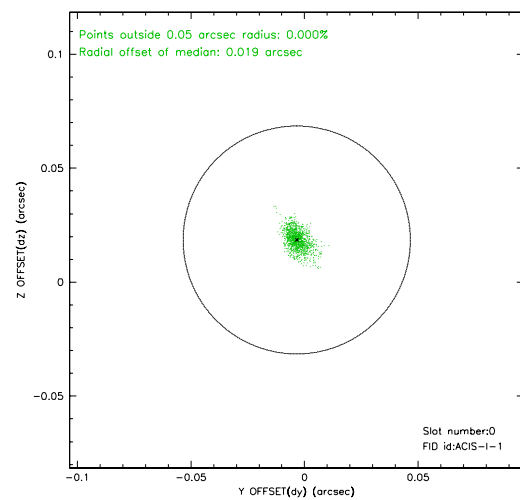
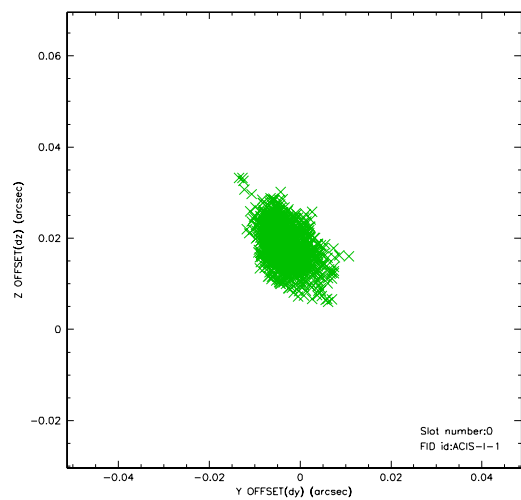


2.4.5 Slot 7

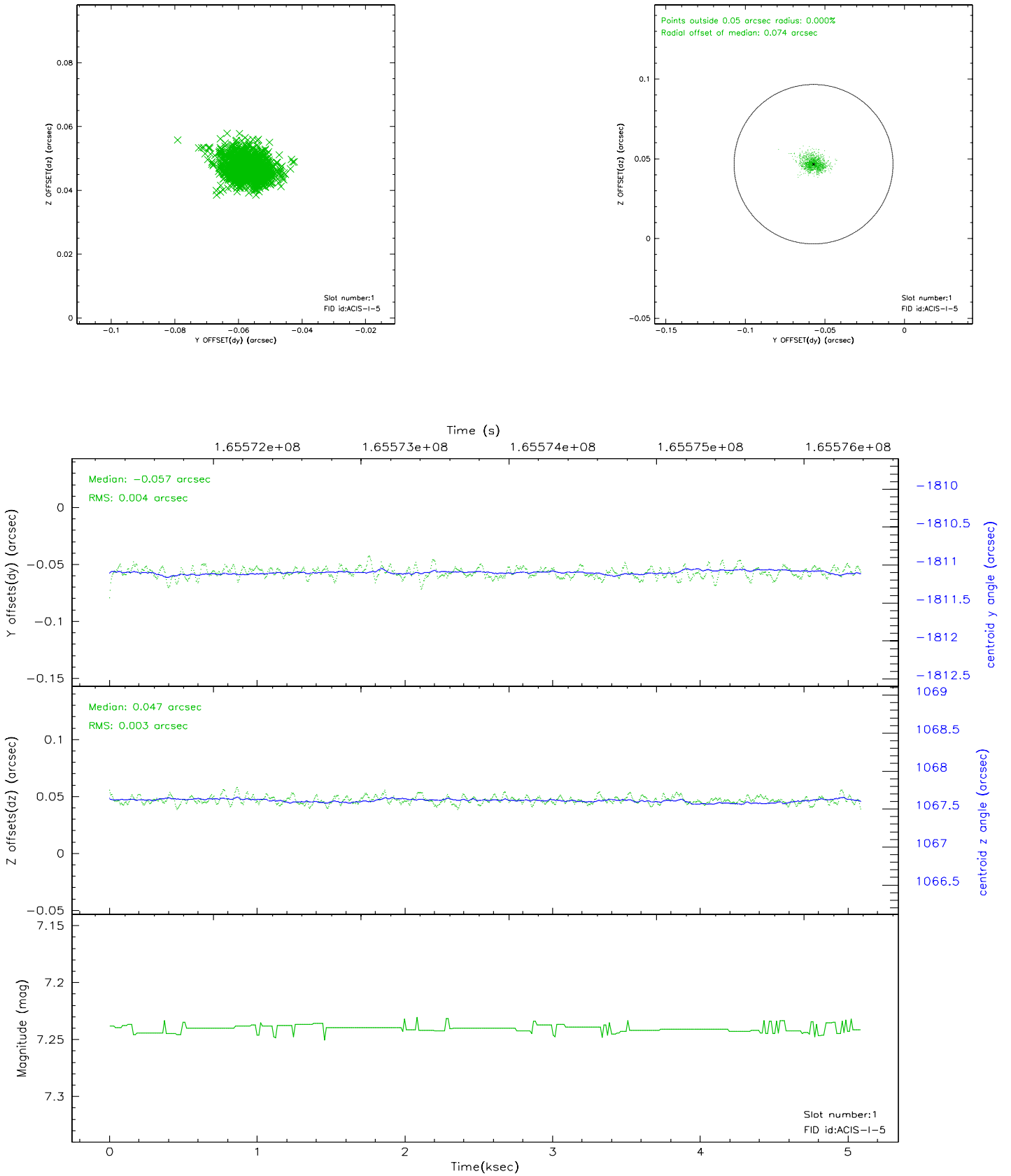


2.5 FID Slots

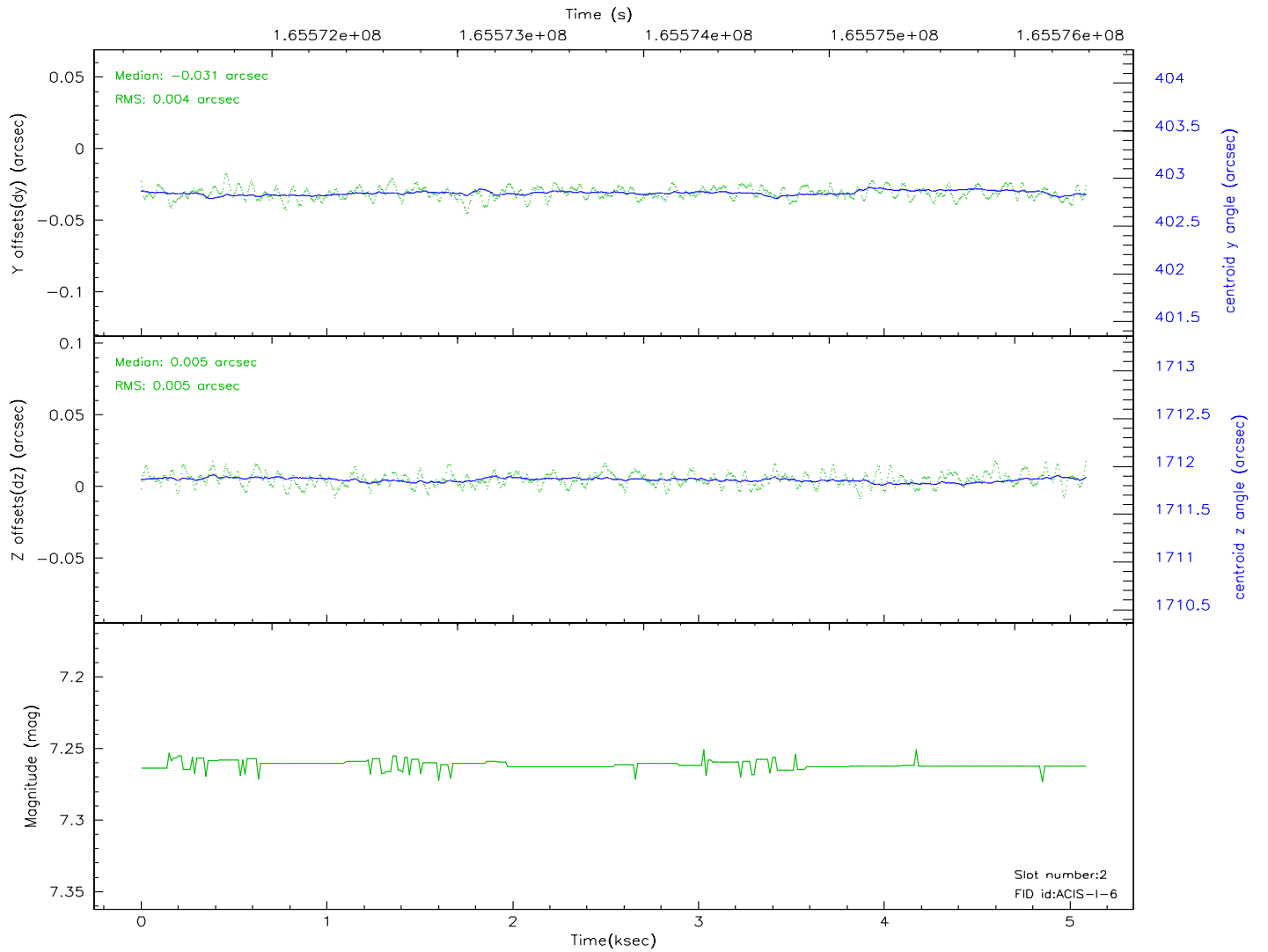
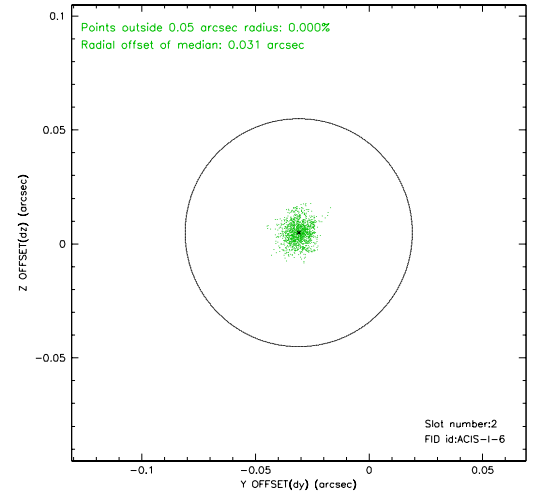
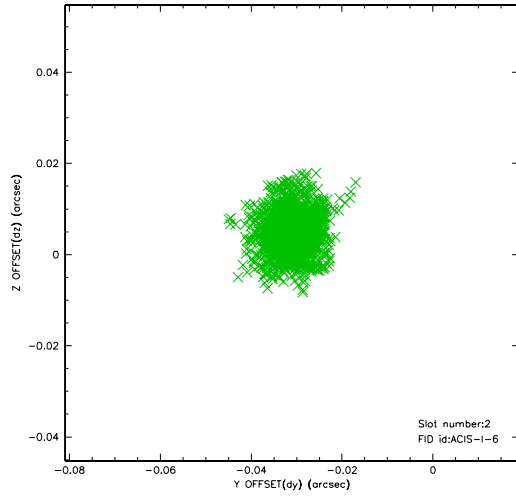
2.5.1 Slot 0



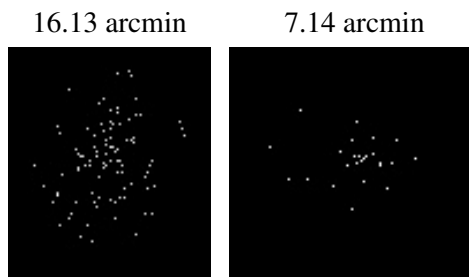
2.5.2 Slot 1



2.5.3 Slot 2



3 Point Sources



A Summary

A.1 Status

V&V Scientist	Jen Lauer
V&V Date (YYYY-MM-DD)	2006.07.30
V&V Edition	1
V&V Disposition and Status	OK
V&V Charge Time	4.671

A.2 Comments

Slot 7 was only tracked for 90% of the aspect interval; it is therefore marked bad and excluded from the aspect solution.