

# V&V Reference Report

## L2 ASCDS Version : 7.6.8

Observation 3645 - L2 Version 001  
Chandra X-Ray Center

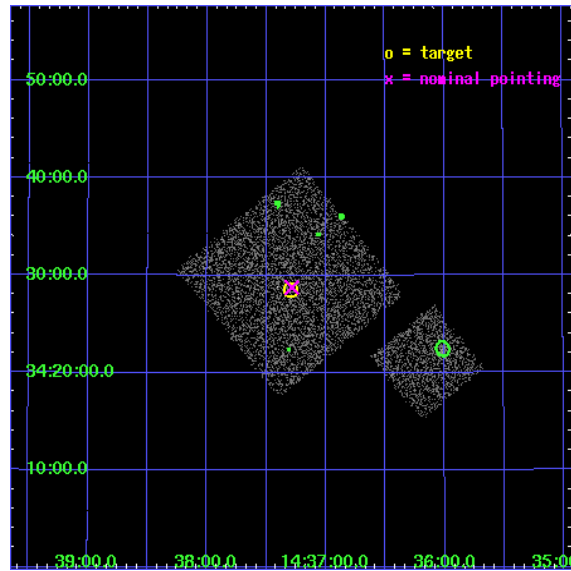
L2 Processing Date : Jul 30 2006

## Contents

<b>1</b>	<b>Front</b>	<b>2</b>
<b>2</b>	<b>OBI</b>	<b>3</b>
2.1	OBI . . . . .	3
2.1.1	Images . . . . .	3
2.1.2	Bias . . . . .	3
2.1.3	Parameters . . . . .	4
2.1.4	Events . . . . .	4
2.2	Compared Parameters . . . . .	5
2.3	Aspect . . . . .	6
2.4	Star Slots . . . . .	9
2.4.1	Slot 3 . . . . .	9
2.4.2	Slot 4 . . . . .	10
2.4.3	Slot 5 . . . . .	11
2.4.4	Slot 6 . . . . .	12
2.4.5	Slot 7 . . . . .	13
2.5	FID Slots . . . . .	14
2.5.1	Slot 0 . . . . .	14
2.5.2	Slot 1 . . . . .	15
2.5.3	Slot 2 . . . . .	16
<b>3</b>	<b>Point Sources</b>	<b>17</b>
<b>A</b>	<b>Summary</b>	<b>18</b>
A.1	Status . . . . .	18
A.2	Comments . . . . .	18

# 1 Front

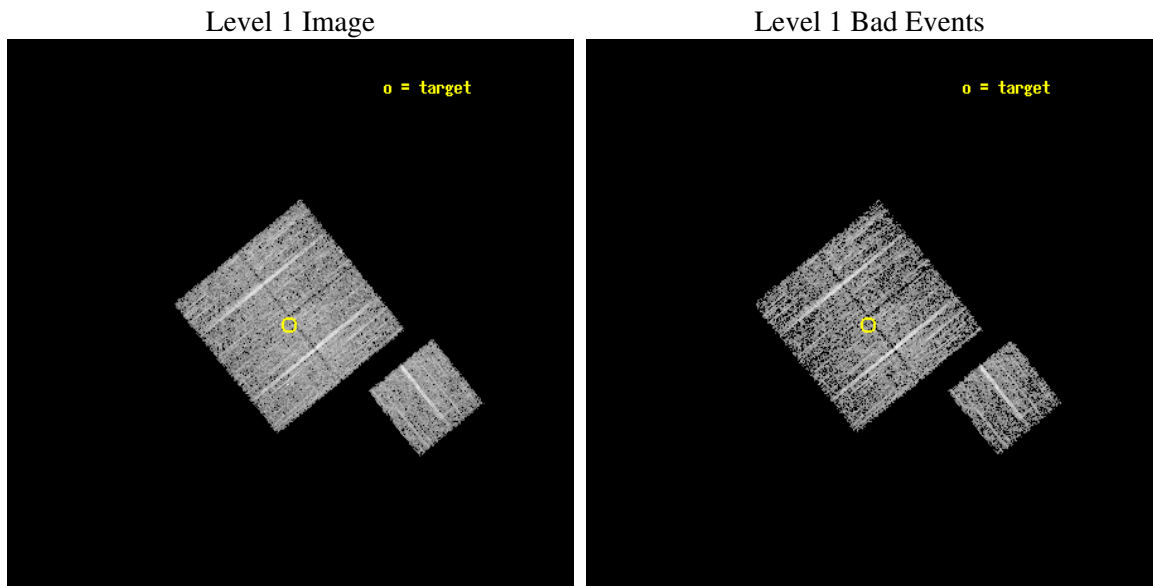
seq_num	900245
obs_id	3645
title	CHANDRA LARGE SCALE SURVEY OF THE NOAO BOOTES DEEP FIELD
observer	Dr. Stephen Murray
object	NOAO FIELD F31
dtcycle	0
cycle	P
ra_targ	219.323765
dec_targ	34.475388
ra_nom	219.32105451102
dec_nom	34.47945564809
roll_nom	141.01021920331
revision	2
ontime	4671.6999910176
livetime	4610.6607913794
ontime0	4671.6999910176
ontime1	4671.6999910176
ontime2	4671.6999910176
ontime3	4671.6999910176
ontime6	4671.6999910176
l2events	9577



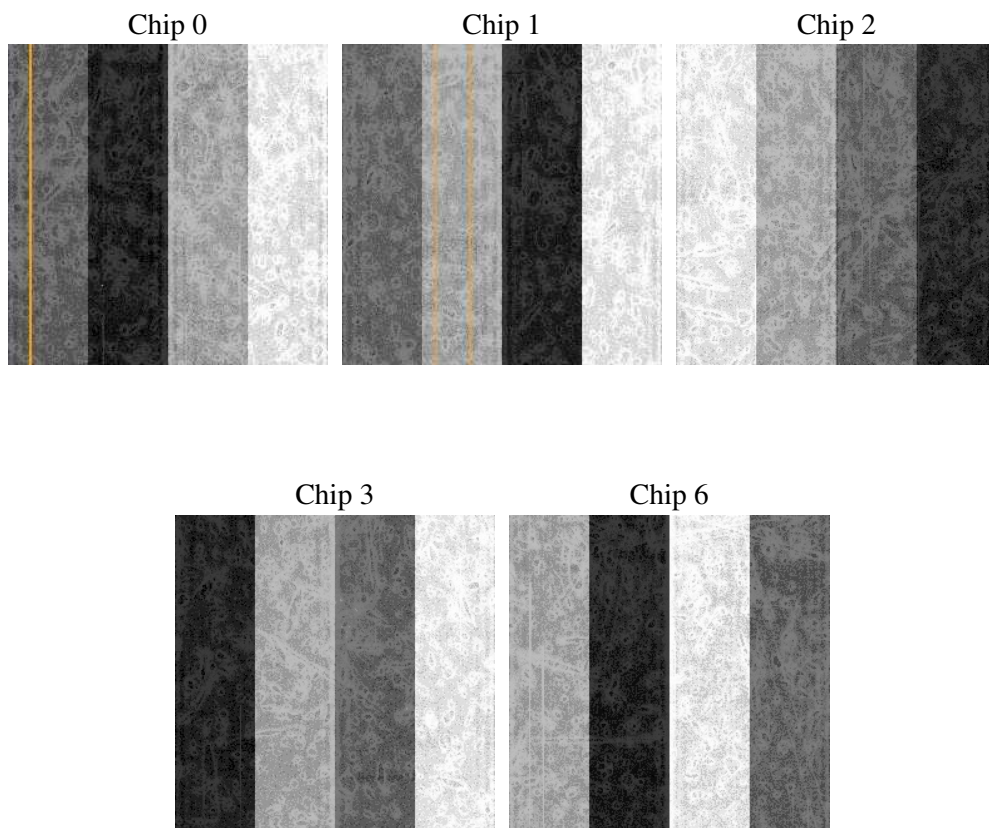
## 2 OBI

### 2.1 OBI

#### 2.1.1 Images



#### 2.1.2 Bias



### 2.1.3 Parameters

obi_num	1
ascdsver	7.6.8
caldsver	3.2.2
date	2006-07-30T05:31:47
revision	2

sched_exp_time	4900.000000
ontime	4676.9592172205
ontime0	4676.9591973126
ontime1	4676.9591973126
ontime2	4676.9591774046
ontime3	4676.9592172205
ontime6	4676.9591774046
l1events	117961

### 2.1.4 Events

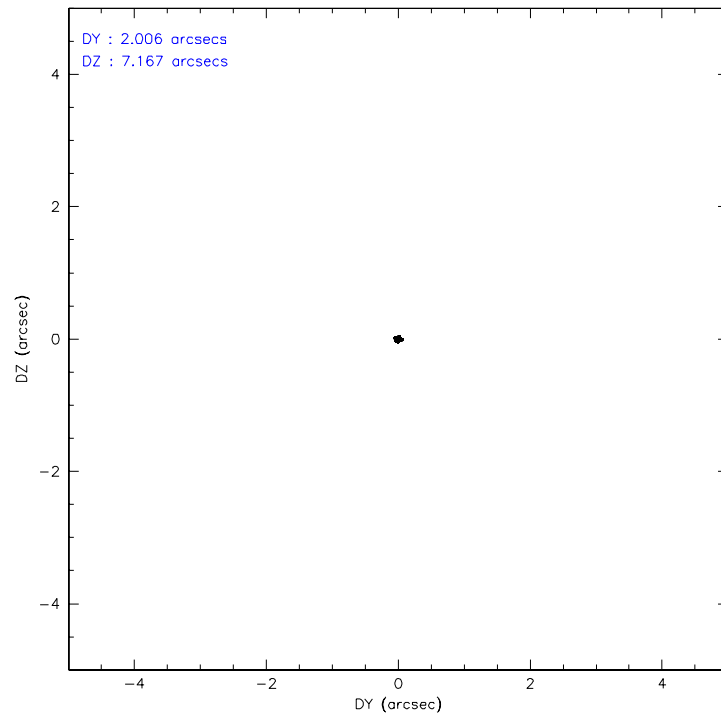
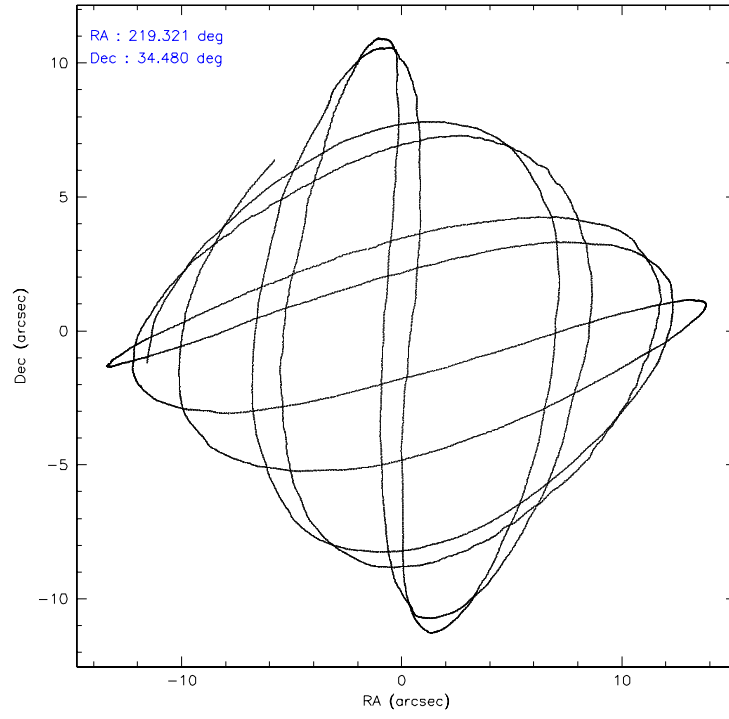
	ccd 0	ccd 1	ccd 2	ccd 3	ccd 6
level 1 events	23141	22496	25667	23817	22840
rejected events	20687	20015	23344	21649	20539
rejected %	89%	88%	90%	90%	89%

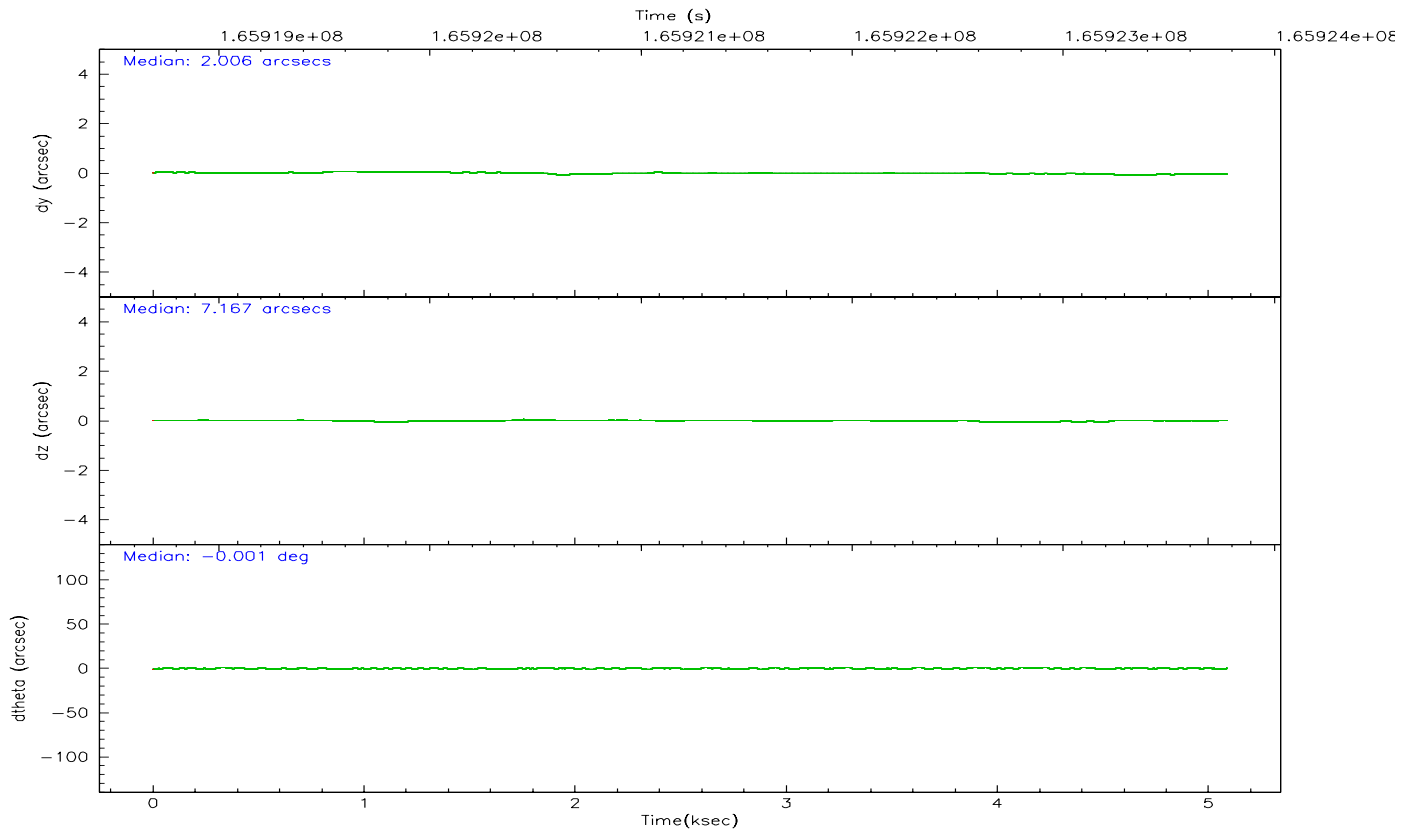
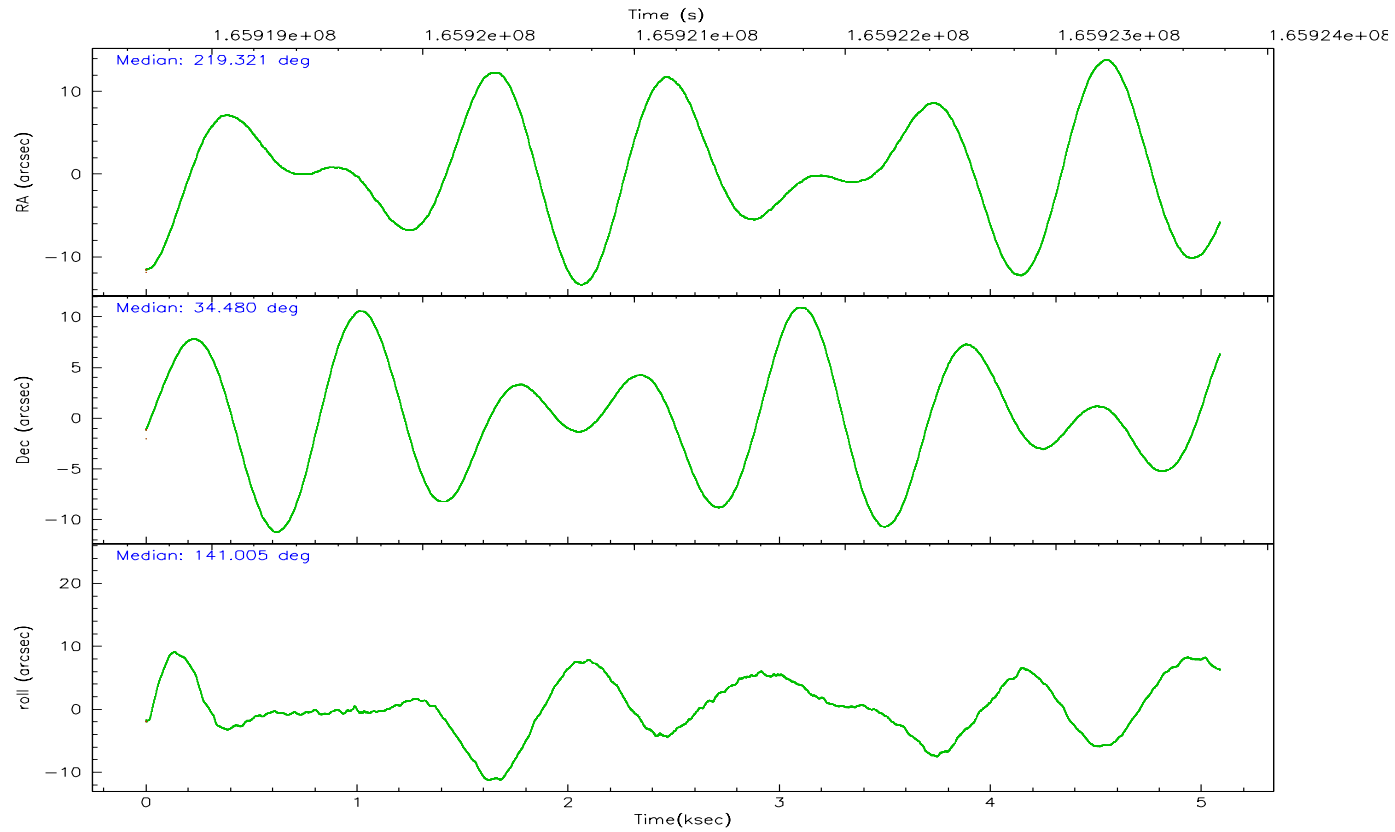
	ccd 0	ccd 1	ccd 2	ccd 3	ccd 6
grade 0 events	918	885	861	805	844
	3%	3%	3%	3%	3%
grade 1 events	16	5	17	11	7
	0%	0%	0%	0%	0%
grade 2 events	526	529	560	449	498
	2%	2%	2%	1%	2%
grade 3 events	302	272	285	271	239
	1%	1%	1%	1%	1%
grade 4 events	256	291	229	247	262
	1%	1%	0%	1%	1%
grade 5 events	708	767	603	774	721
	3%	3%	2%	3%	3%
grade 6 events	454	510	394	399	461
	1%	2%	1%	1%	2%
grade 7 events	19961	19237	22718	20861	19808
	86%	85%	88%	87%	86%

## 2.2 Compared Parameters

Parameter	Planned	Actual	Parameter	Planned	Actual
Instrument	ACIS	ACIS	Obspar format version number	6	6
Detector	ACIS-01236	ACIS-01236	Obspar file type	PREDICTED	ACTUAL
Grating	NONE	NONE	Obspar update status	NONE	UPDATED
Data mode	VFAINT	VFAINT	On-chip summing requested	N	N
Observation mode	POINTING	POINTING	Subarray requested	NONE	NONE
Pointing RA	219.353955	219.3210545110214	Alternating exposures requested	N	N
Pointing Dec	34.475308	34.47945564808983	Primary exposure time	0.000000	3.1
Pointing Roll	140.782905	141.0102192033131			
SIM focus pos (mm)	-0.782348	-0.7809083437167272			
SIM defocus (mm)	0	0.001439871863259334			
SIM translation stage pos (mm)	-233.592463	-233.5874344608287			
SIM translation stage offset (mm)	0	-0.005018542100998502			
Observation start time	165918877.184000	165918500.69721			
Observation start date	2003-04-05T08:33:33	2003-04-05T08:28:20			
Observation end time	165923777.184000	165923910.64744			
Observation end date	2003-04-05T09:55:13	2003-04-05T09:58:30			
Read mode	TIMED	TIMED			

## 2.3 Aspect





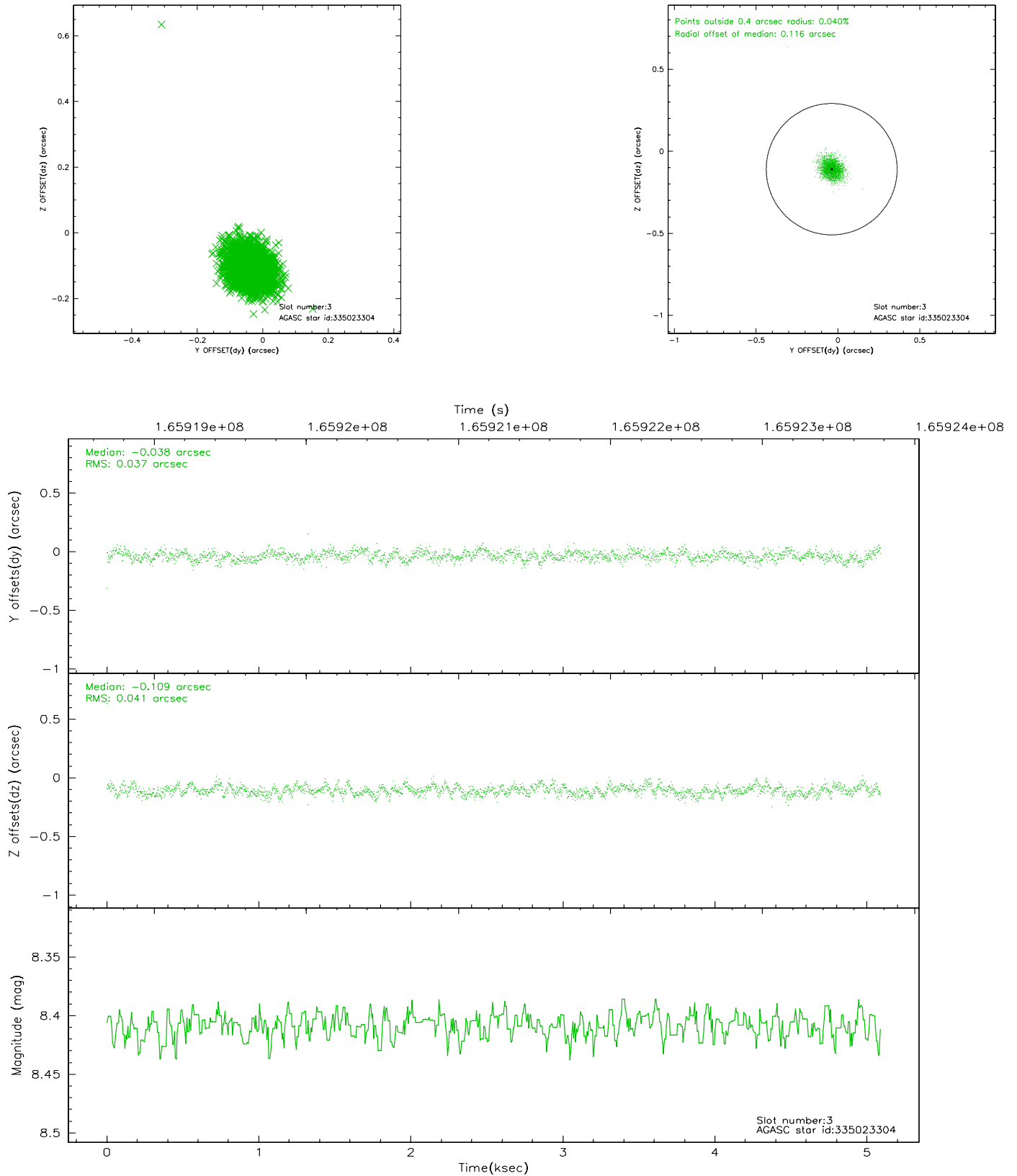
### Slot Statistics

slot	status	id	mag	n_pts	med_dy	med_dz	dr1	dr2	ra	dec	mean_y	mean_z
0	FID	ACIS-I-1	7.25	1242	-0.013	0.044	0.006	0.010	0.000000	0.000000	937.78	-830.54
1	FID	ACIS-I-5	7.24	1242	-0.042	0.046	0.006	0.010	0.000000	0.000000	-1809.65	1066.42
2	FID	ACIS-I-6	7.26	1242	-0.036	-0.019	0.007	0.011	0.000000	0.000000	402.07	1712.16
3	GUIDE	335023304	8.41	2478	-0.038	-0.109	0.057	0.091	218.883608	34.686545	1561.37	288.87
4	GUIDE	335151840	9.19	2482	0.060	0.201	0.084	0.131	220.238613	34.430640	-2128.88	-1544.84
5	GUIDE	335152784	7.26	2483	0.056	-0.188	0.059	0.099	219.280617	33.678221	-1645.32	2361.36
6	GUIDE	335157088	9.10	2483	0.068	-0.107	0.112	0.171	219.274029	33.726909	-1519.02	2239.59
7	GUIDE	335414336	8.98	2472	-0.152	0.205	0.096	0.152	218.979022	35.090910	2257.38	-1018.78

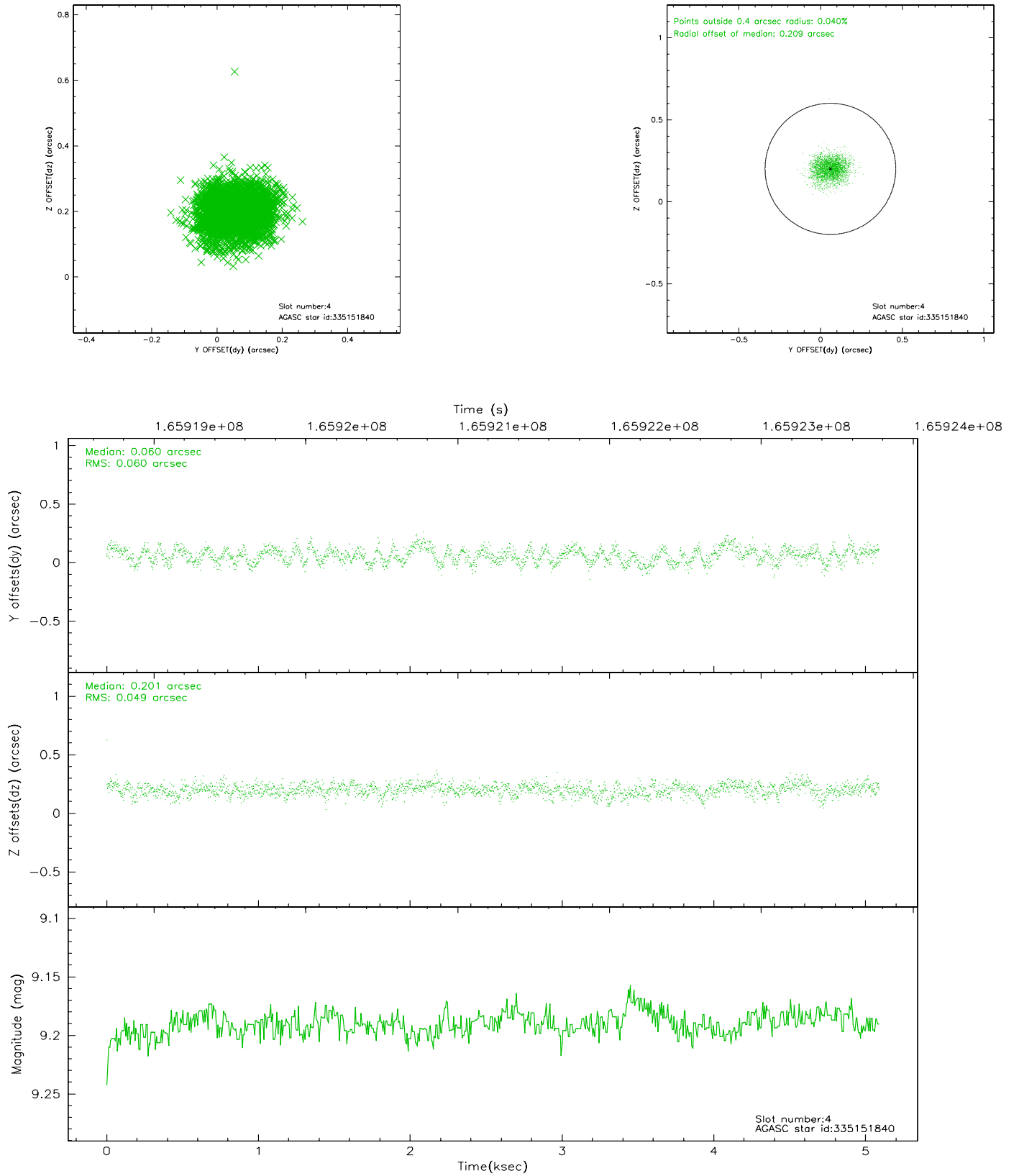


## 2.4 Star Slots

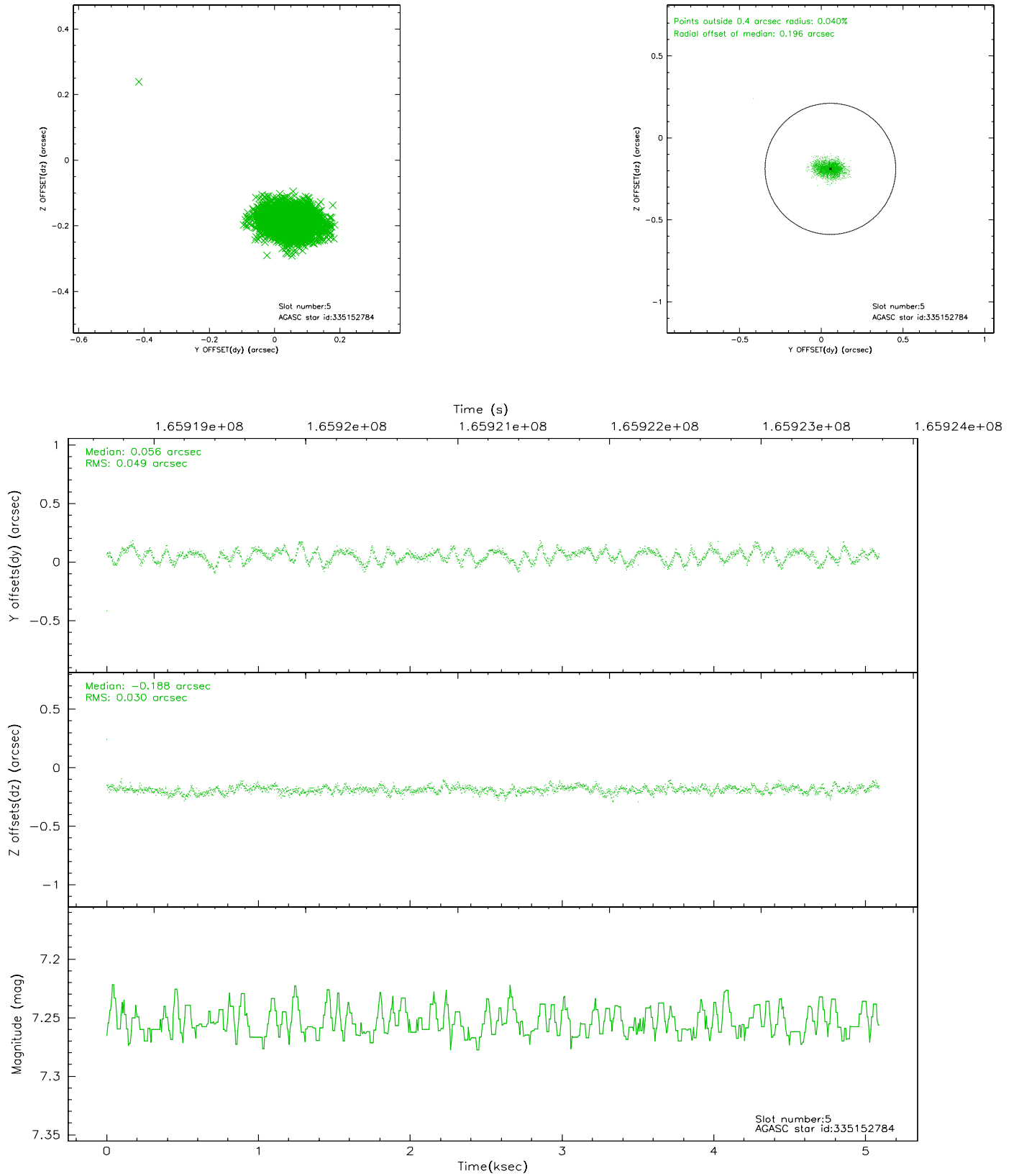
### 2.4.1 Slot 3



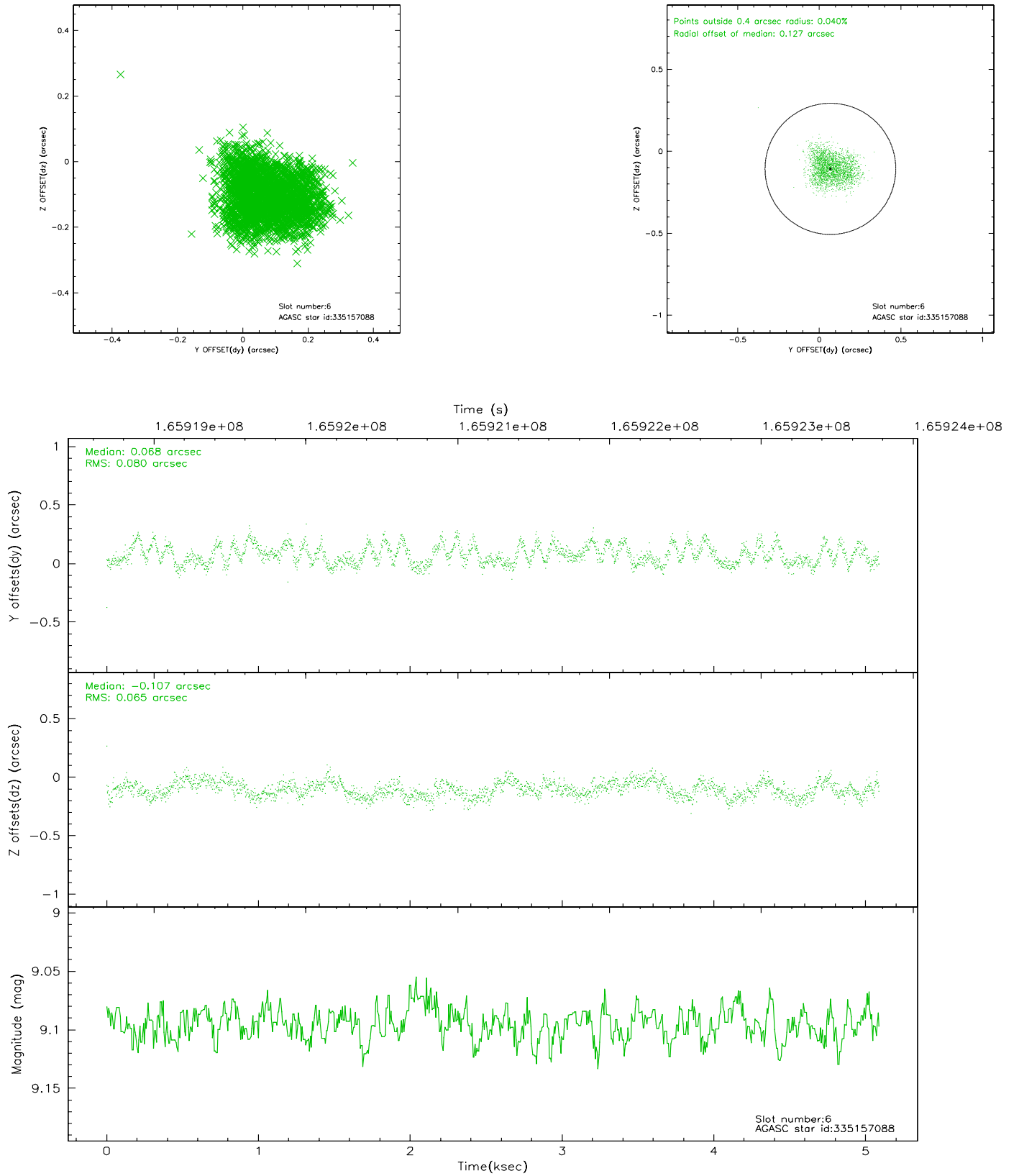
## 2.4.2 Slot 4



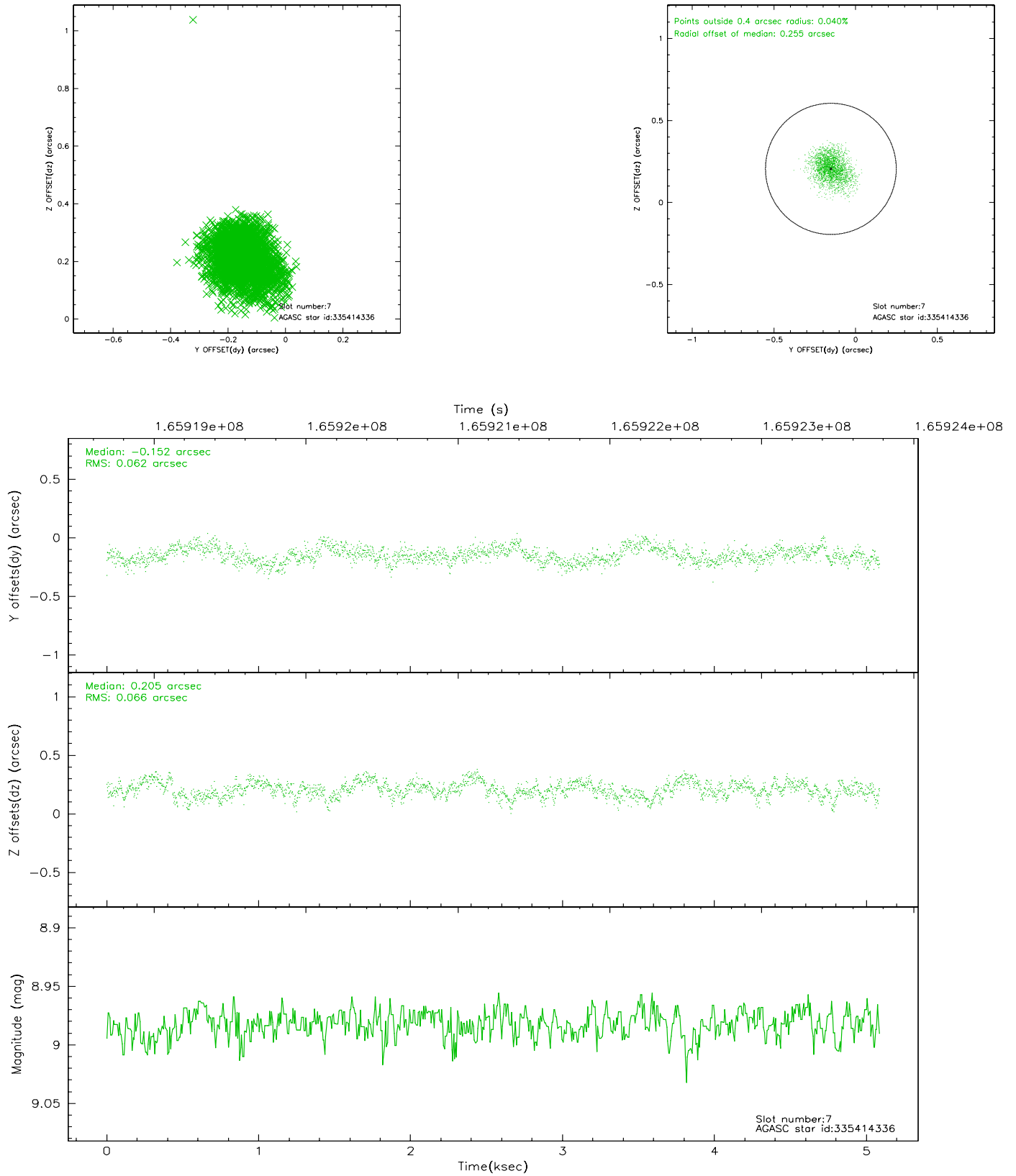
### 2.4.3 Slot 5



## 2.4.4 Slot 6

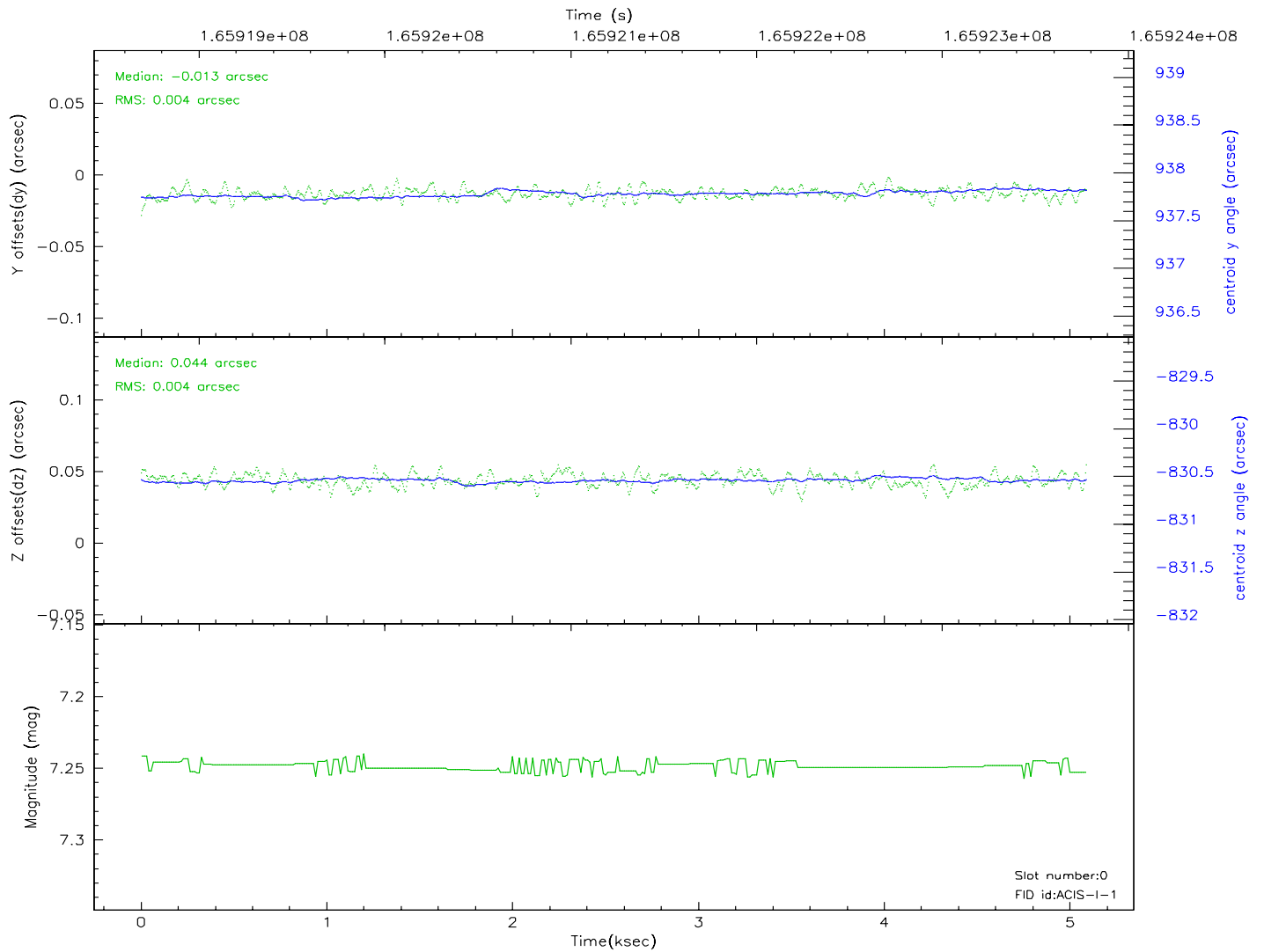
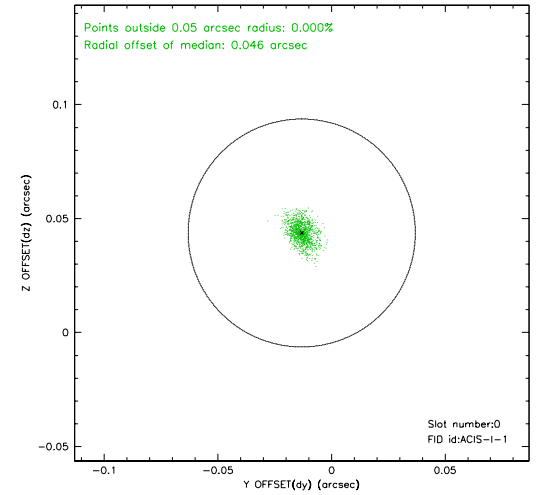
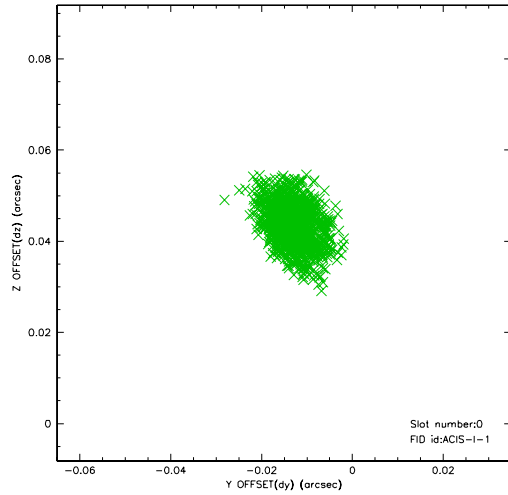


## 2.4.5 Slot 7

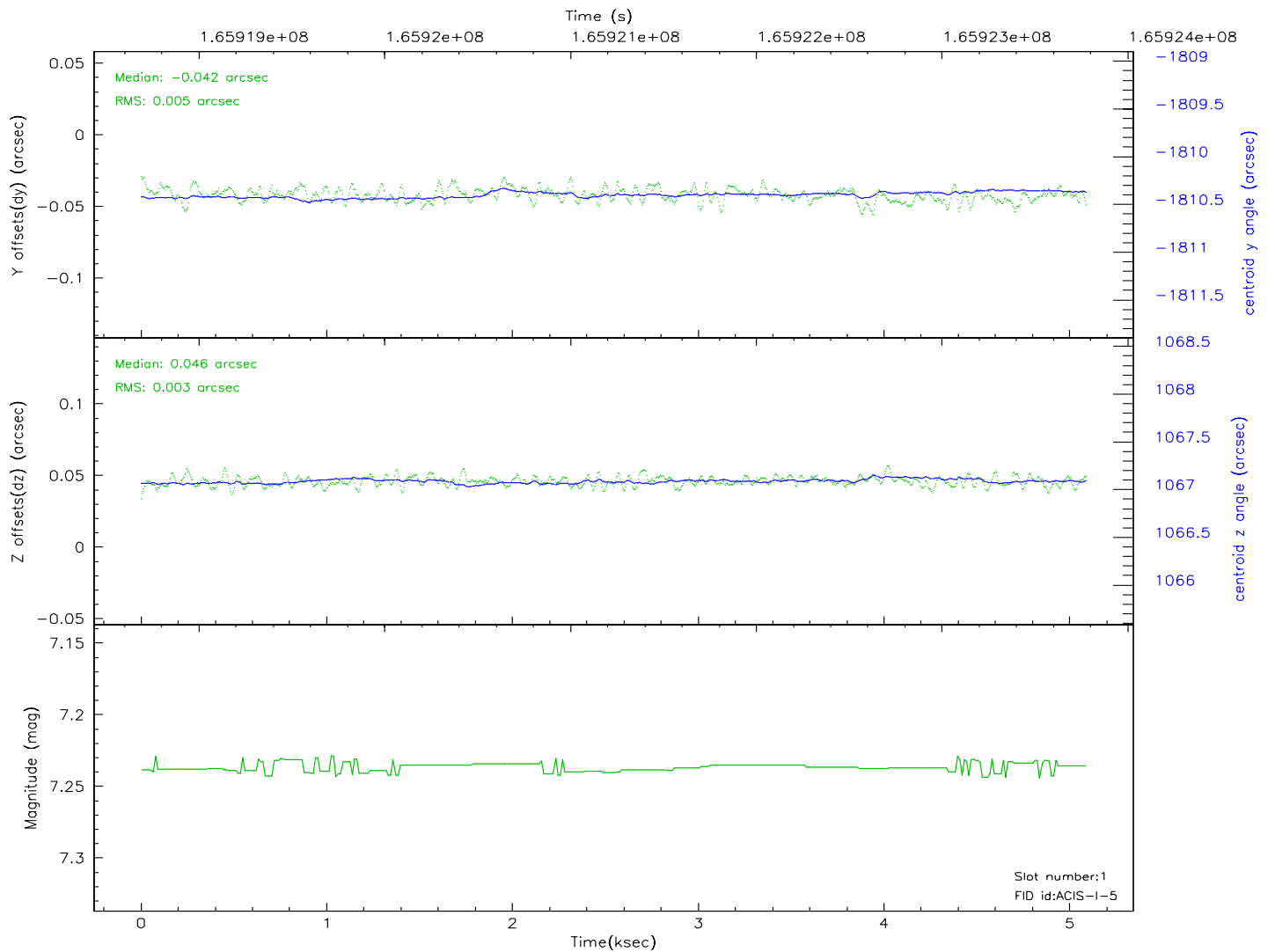
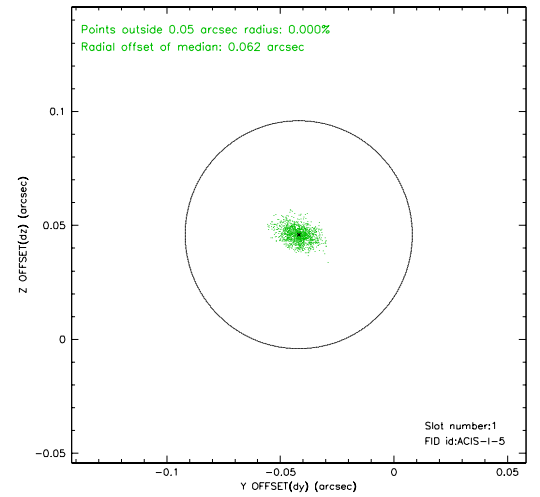
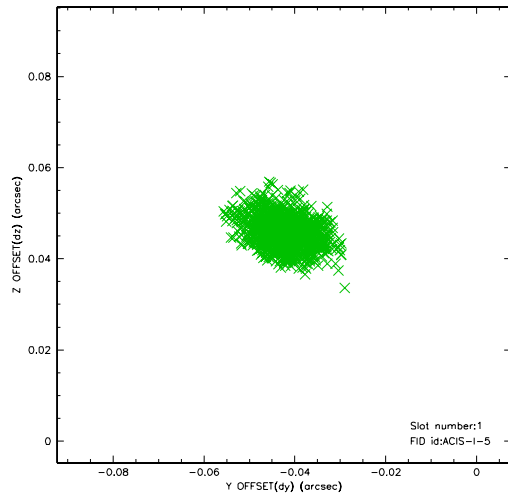


## 2.5 FID Slots

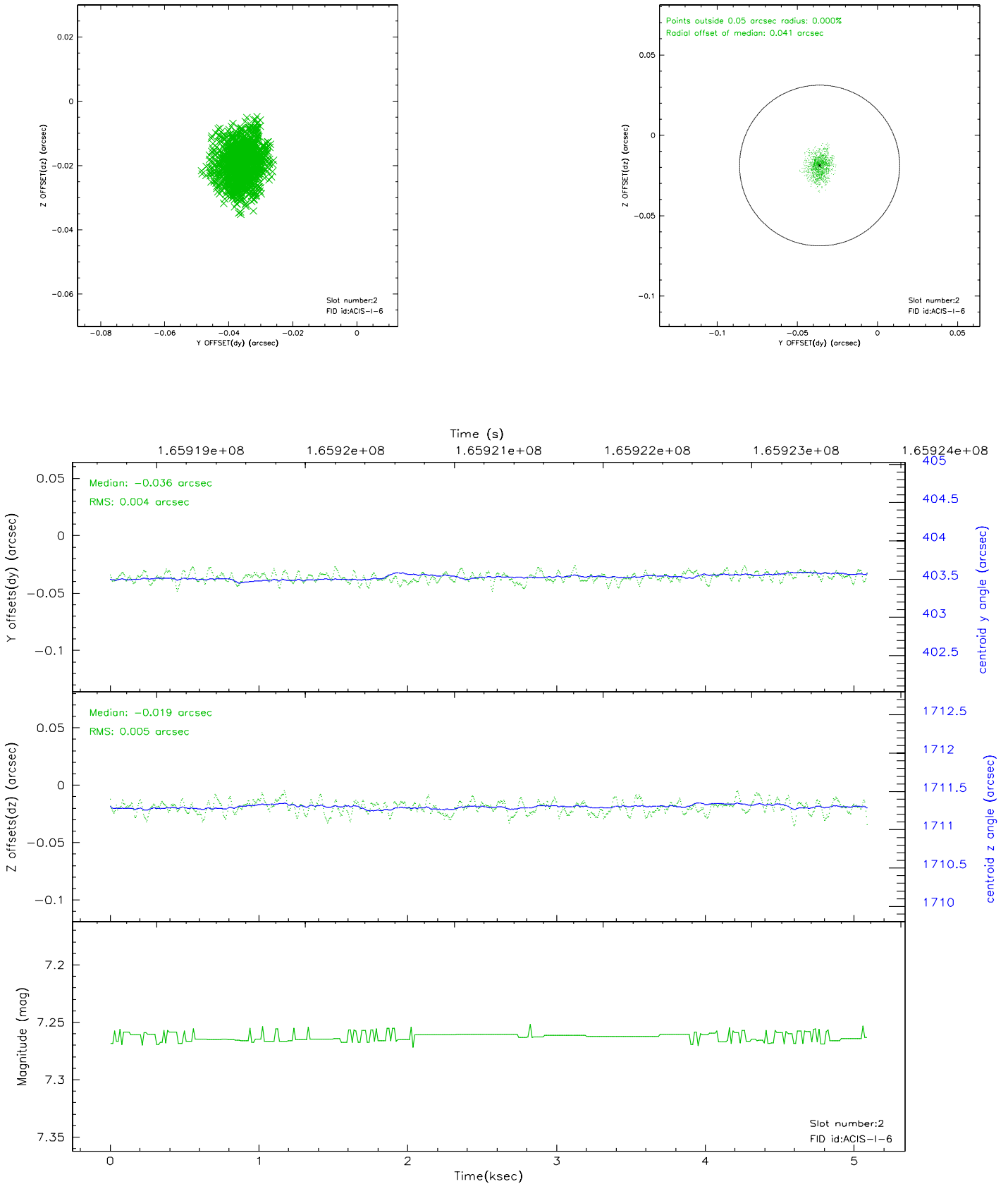
### 2.5.1 Slot 0



## 2.5.2 Slot 1

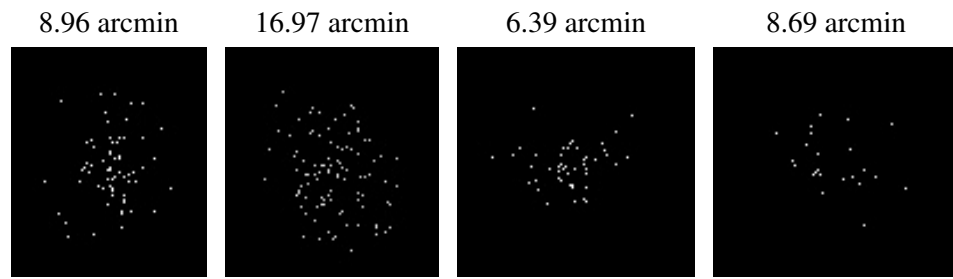


### 2.5.3 Slot 2





### 3 Point Sources



## A Summary

### A.1 Status

V&V Scientist	Jen Lauer
V&V Date (YYYY-MM-DD)	2006.07.30
V&V Edition	1
V&V Disposition and Status	OK
V&V Charge Time	4.674

### A.2 Comments