

# V&V Reference Report

## L2 ASCDS Version : 7.6.8

Observation 3631 - L2 Version 001  
Chandra X-Ray Center

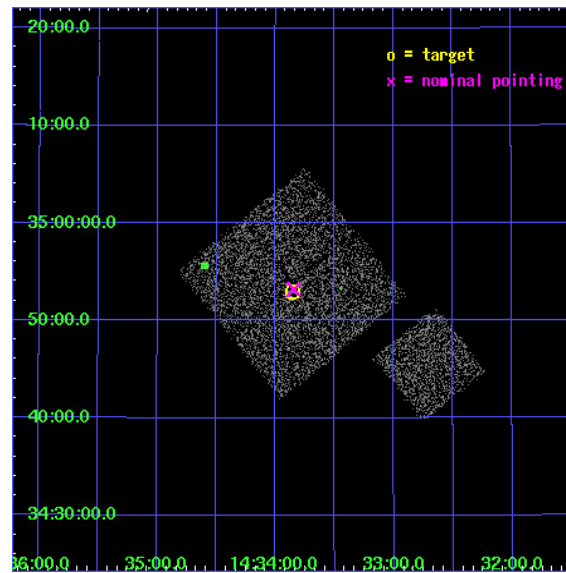
L2 Processing Date : Jul 29 2006

## Contents

<b>1</b>	<b>Front</b>	<b>2</b>
<b>2</b>	<b>OBI</b>	<b>3</b>
2.1	OBI . . . . .	3
2.1.1	Images . . . . .	3
2.1.2	Bias . . . . .	3
2.1.3	Parameters . . . . .	4
2.1.4	Events . . . . .	4
2.2	Compared Parameters . . . . .	5
2.3	Aspect . . . . .	6
2.4	Star Slots . . . . .	9
2.4.1	Slot 3 . . . . .	9
2.4.2	Slot 4 . . . . .	10
2.4.3	Slot 5 . . . . .	11
2.4.4	Slot 6 . . . . .	12
2.4.5	Slot 7 . . . . .	13
2.5	FID Slots . . . . .	14
2.5.1	Slot 0 . . . . .	14
2.5.2	Slot 1 . . . . .	15
2.5.3	Slot 2 . . . . .	16
<b>3</b>	<b>Point Sources</b>	<b>17</b>
<b>A</b>	<b>Summary</b>	<b>18</b>
A.1	Status . . . . .	18
A.2	Comments . . . . .	18

# 1 Front

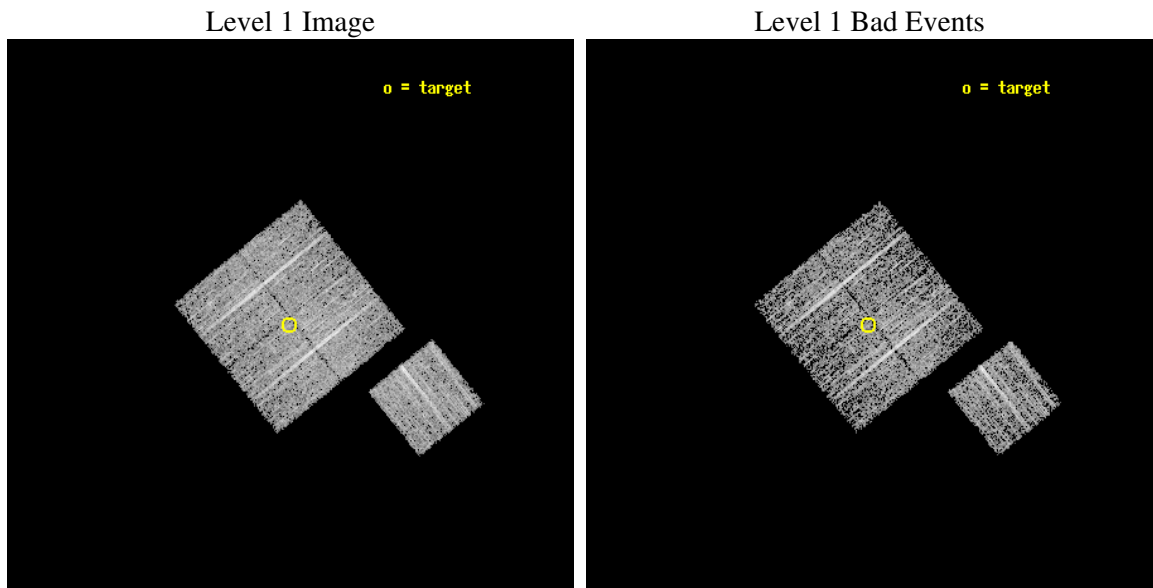
seq_num	900231
obs_id	3631
title	CHANDRA LARGE SCALE SURVEY OF THE NOAO BOOTES DEEP FIELD
observer	Dr. Stephen Murray
object	NOAO FIELD F7
dtcycle	0
cycle	P
ra_targ	218.463931
dec_targ	34.882776
ra_nom	218.46122583328
dec_nom	34.886810348644
roll_nom	141.01025300731
revision	2
ontime	4671.6590107977
livetime	4610.6203465963
ontime0	4674.7999910116
ontime1	4671.6590107977
ontime2	4671.6590107977
ontime3	4671.6590107977
ontime6	4674.7999910116
l2events	9411



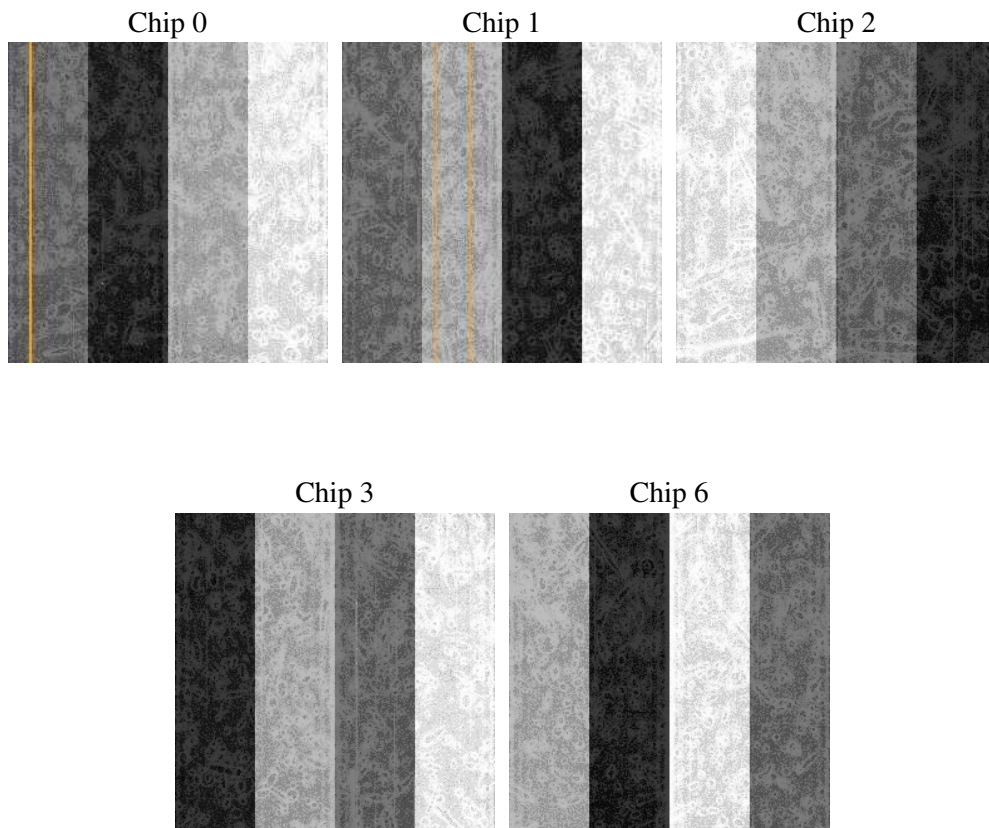
## 2 OBI

### 2.1 OBI

#### 2.1.1 Images



#### 2.1.2 Bias



### 2.1.3 Parameters

obi_num	1
ascdsver	7.6.8
caldbver	3.2.2
date	2006-07-30T02:19:34
revision	2

sched_exp_time	4900.000000
ontime	4676.9611071944
ontime0	4680.1021073163
ontime1	4676.9611271024
ontime2	4676.9611071944
ontime3	4676.9611071944
ontime6	4680.1021073163
l1events	117215

### 2.1.4 Events

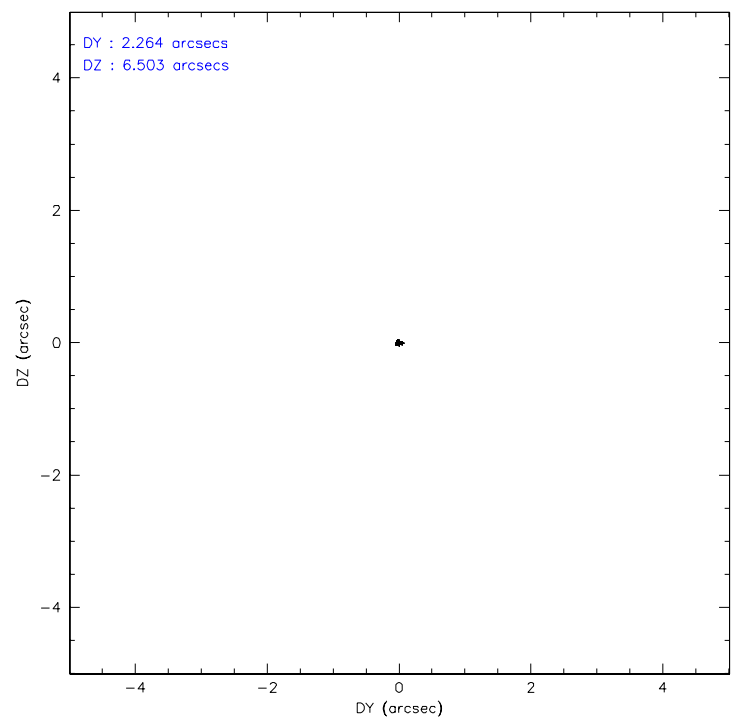
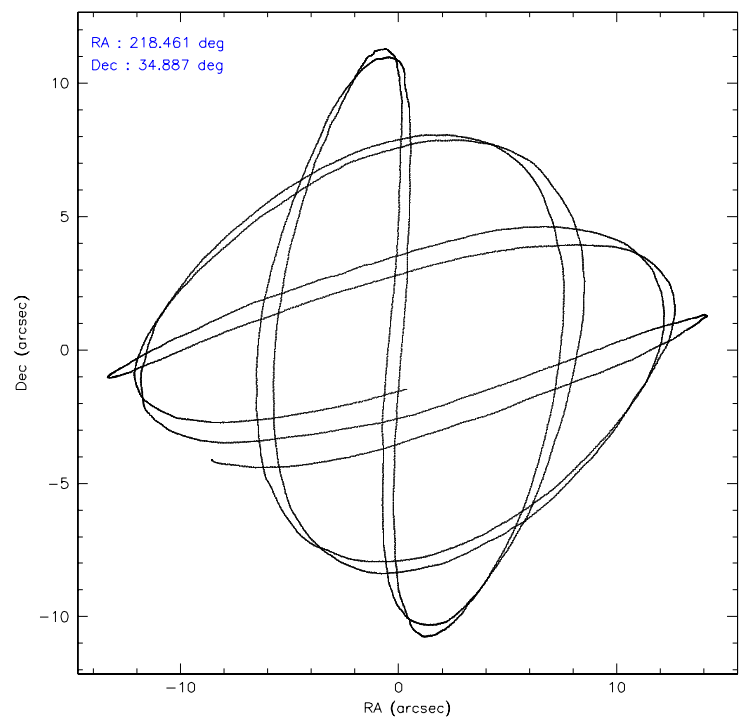
	<b>ccd 0</b>	<b>ccd 1</b>	<b>ccd 2</b>	<b>ccd 3</b>	<b>ccd 6</b>
level 1 events	22002	22778	25310	22159	24966
rejected events	19754	20350	23025	20034	22649
rejected %	89%	89%	90%	90%	90%

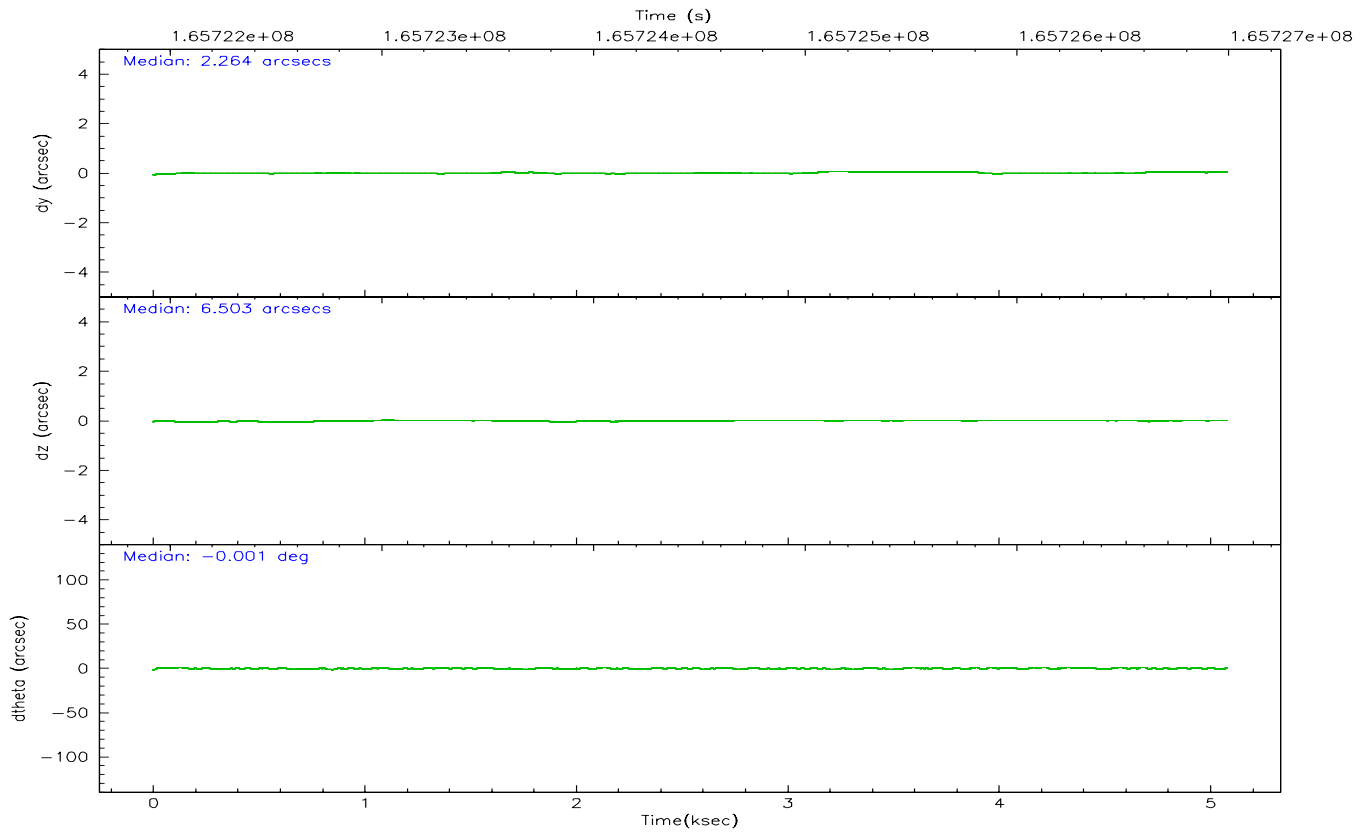
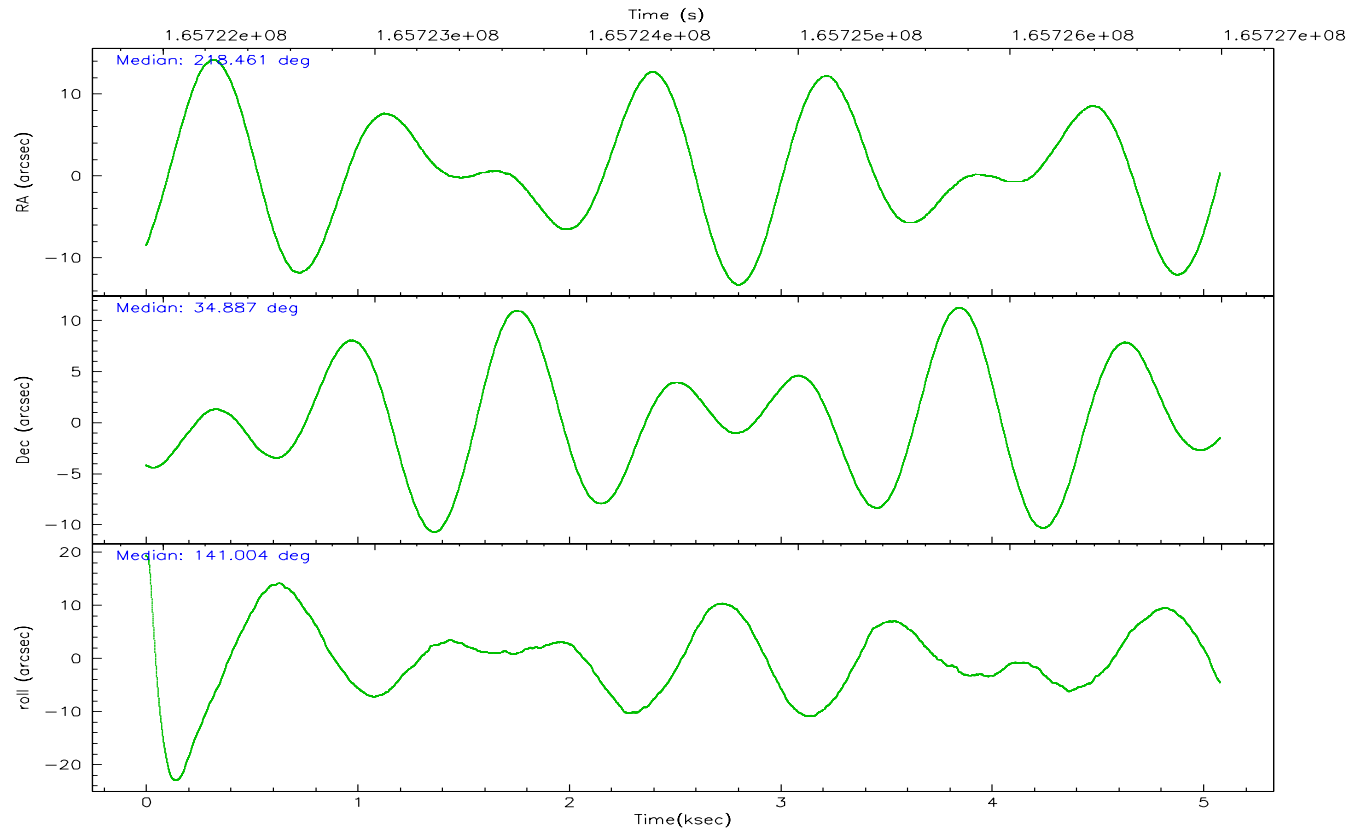
	<b>ccd 0</b>	<b>ccd 1</b>	<b>ccd 2</b>	<b>ccd 3</b>	<b>ccd 6</b>
grade 0 events	794	887	867	799	893
	3%	3%	3%	3%	3%
grade 1 events	12	6	10	11	9
	0%	0%	0%	0%	0%
grade 2 events	508	501	528	435	487
	2%	2%	2%	1%	1%
grade 3 events	269	285	271	248	248
	1%	1%	1%	1%	0%
grade 4 events	260	266	257	252	247
	1%	1%	1%	1%	0%
grade 5 events	666	773	680	773	781
	3%	3%	2%	3%	3%
grade 6 events	418	490	363	393	442
	1%	2%	1%	1%	1%
grade 7 events	19075	19570	22334	19248	21859
	86%	85%	88%	86%	87%

## 2.2 Compared Parameters

Parameter	Planned	Actual	Parameter	Planned	Actual
Instrument	ACIS	ACIS	Obspar format version number	6	6
Detector	ACIS-01236	ACIS-01236	Obspar file type	PREDICTED	ACTUAL
Grating	NONE	NONE	Obspar update status	NONE	UPDATED
Data mode	VFAINT	VFAINT	On-chip summing requested	N	N
Observation mode	POINTING	POINTING	Subarray requested	NONE	NONE
Pointing RA	218.494270	218.4612258332756	Alternating exposures requested	N	N
Pointing Dec	34.882698	34.88681034864408	Primary exposure time	0.000000	3.1
Pointing Roll	140.782651	141.0102530073139			
SIM focus pos (mm)	-0.782348	-0.7809083437167272			
SIM defocus (mm)	0	0.001439871863259334			
SIM translation stage pos (mm)	-233.592463	-233.5874344608287			
SIM translation stage offset (mm)	0	-0.005018542100998502			
Observation start time	165722097.184000	165721721.7014			
Observation start date	2003-04-03T01:53:53	2003-04-03T01:48:41			
Observation end time	165726997.184000	165727132.16413			
Observation end date	2003-04-03T03:15:33	2003-04-03T03:18:52			
Read mode	TIMED	TIMED			

2.3 Aspect





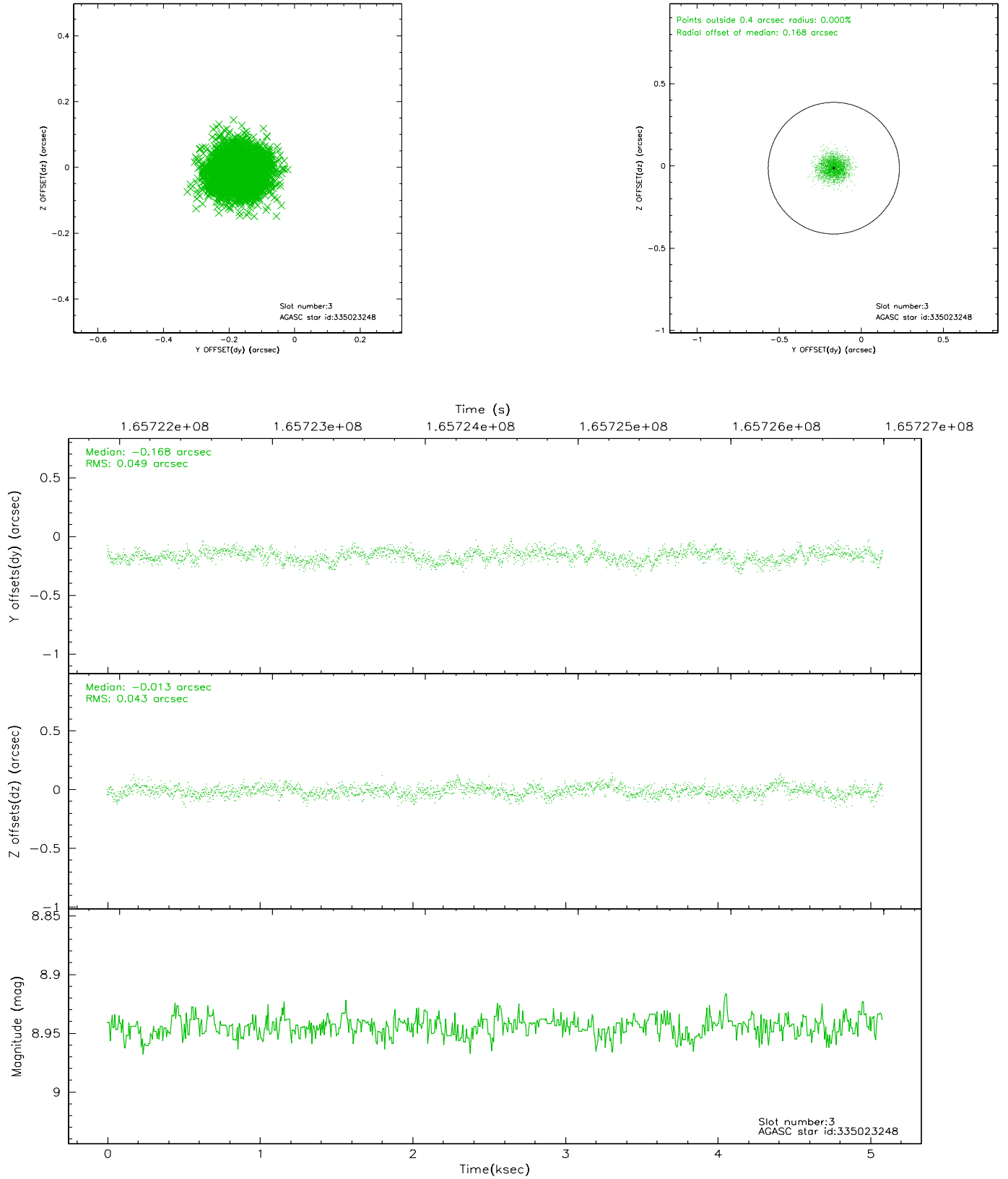
### Slot Statistics

slot	status	id	mag	n_pts	med_dy	med_dz	dr1	dr2	ra	dec	mean_y	mean_z
0	FID	ACIS-I-1	7.25	1239	-0.012	0.024	0.006	0.010	0.000000	0.000000	937.51	-829.87
1	FID	ACIS-I-5	7.24	1239	-0.044	0.042	0.006	0.010	0.000000	0.000000	-1809.92	1067.09
2	FID	ACIS-I-6	7.26	1240	-0.035	0.005	0.006	0.010	0.000000	0.000000	401.79	1712.87
3	GUIDE	335023248	8.94	2479	-0.168	-0.013	0.069	0.110	217.634832	34.944512	2112.18	1422.95
4	GUIDE	335023304	8.41	2479	-0.014	0.041	0.065	0.108	218.883608	34.686545	-1337.11	-182.82
5	GUIDE	335025040	9.91	2476	0.163	-0.014	0.145	0.239	218.601670	34.305240	-1562.25	1408.34
6	GUIDE	335152968	9.77	2478	0.032	-0.010	0.091	0.149	219.446087	34.867883	-2203.97	-1746.16
7	GUIDE	335414336	8.96	2477	-0.021	0.006	0.086	0.136	218.979022	35.090910	-630.94	-1486.96

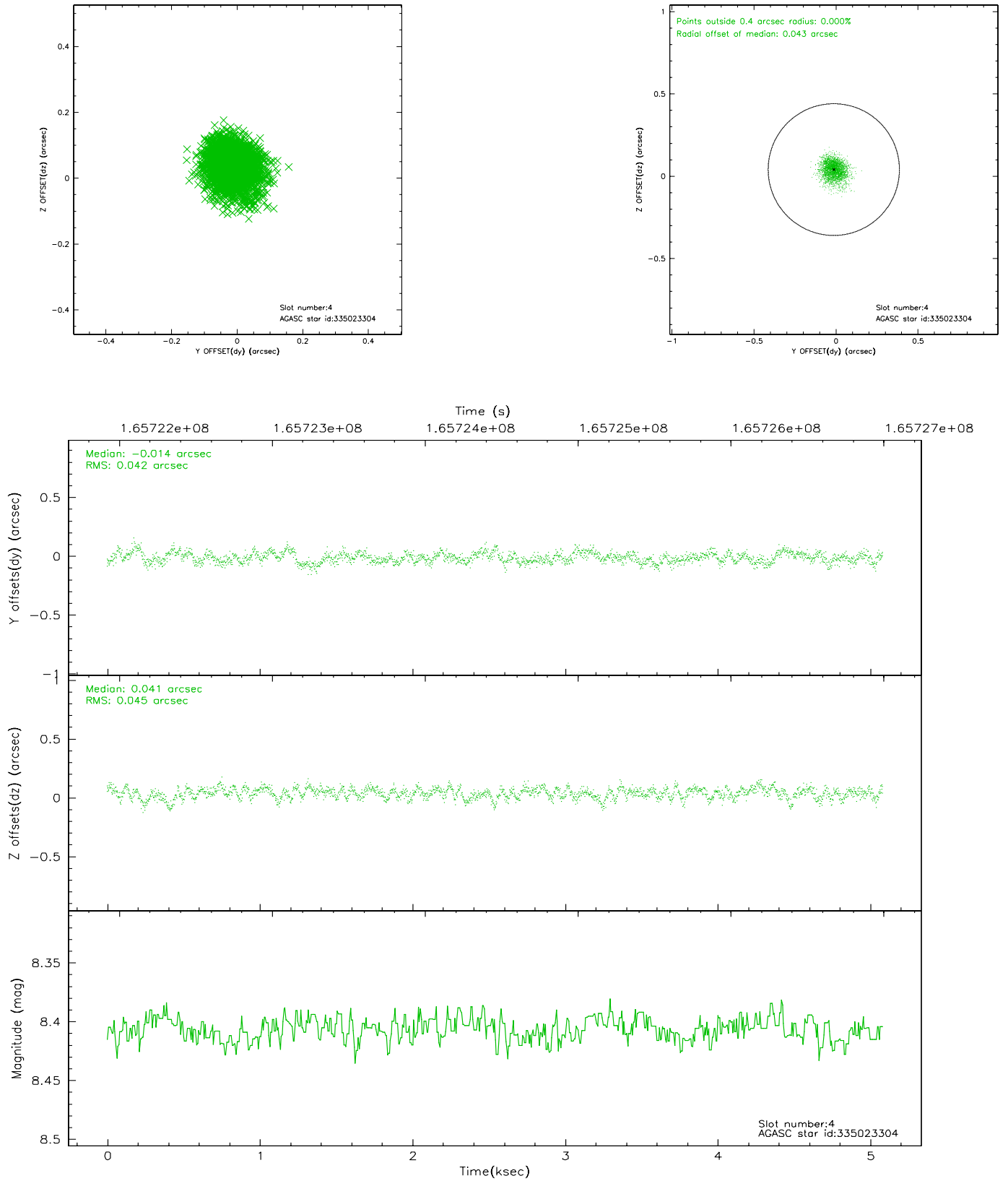


## 2.4 Star Slots

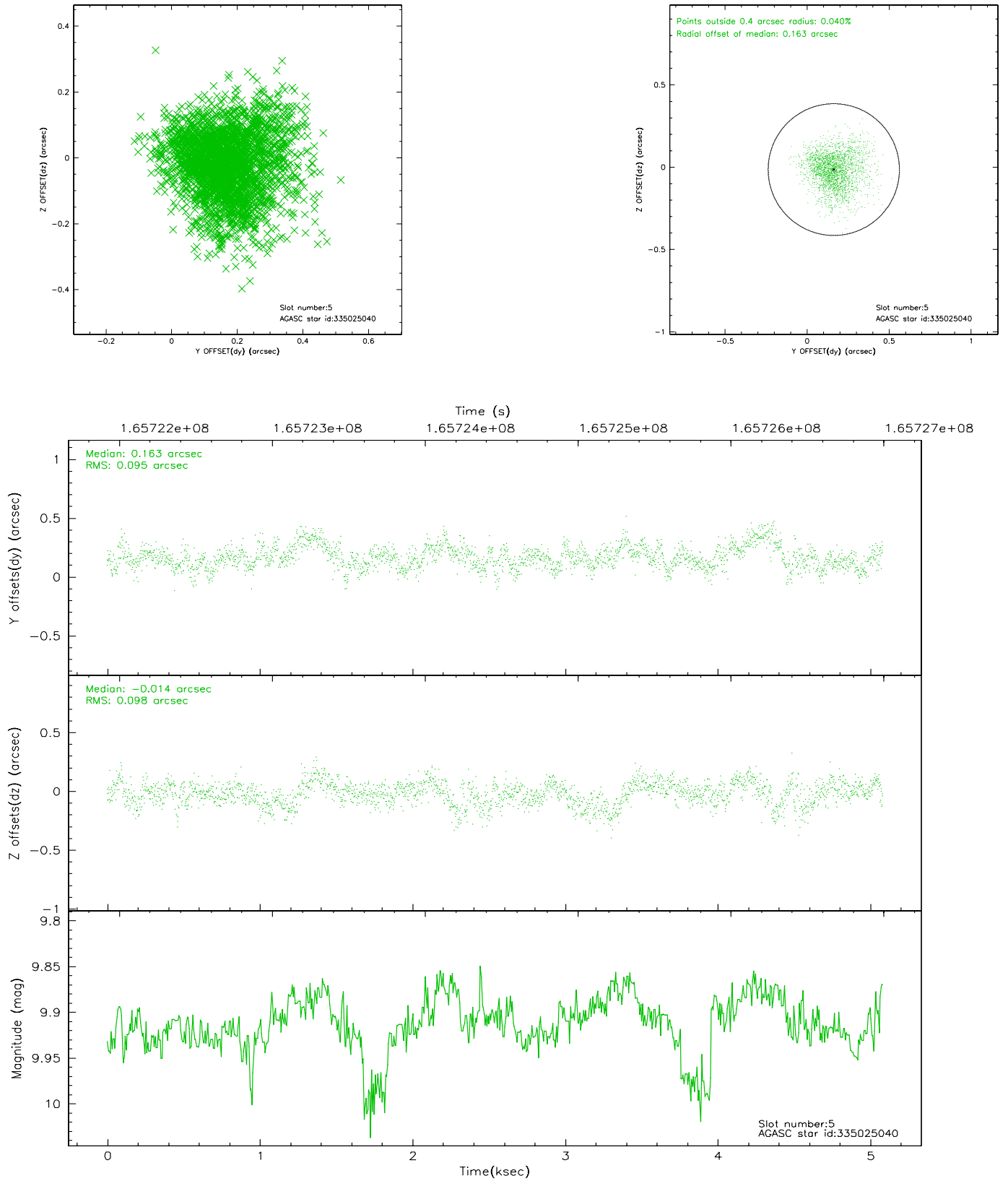
### 2.4.1 Slot 3



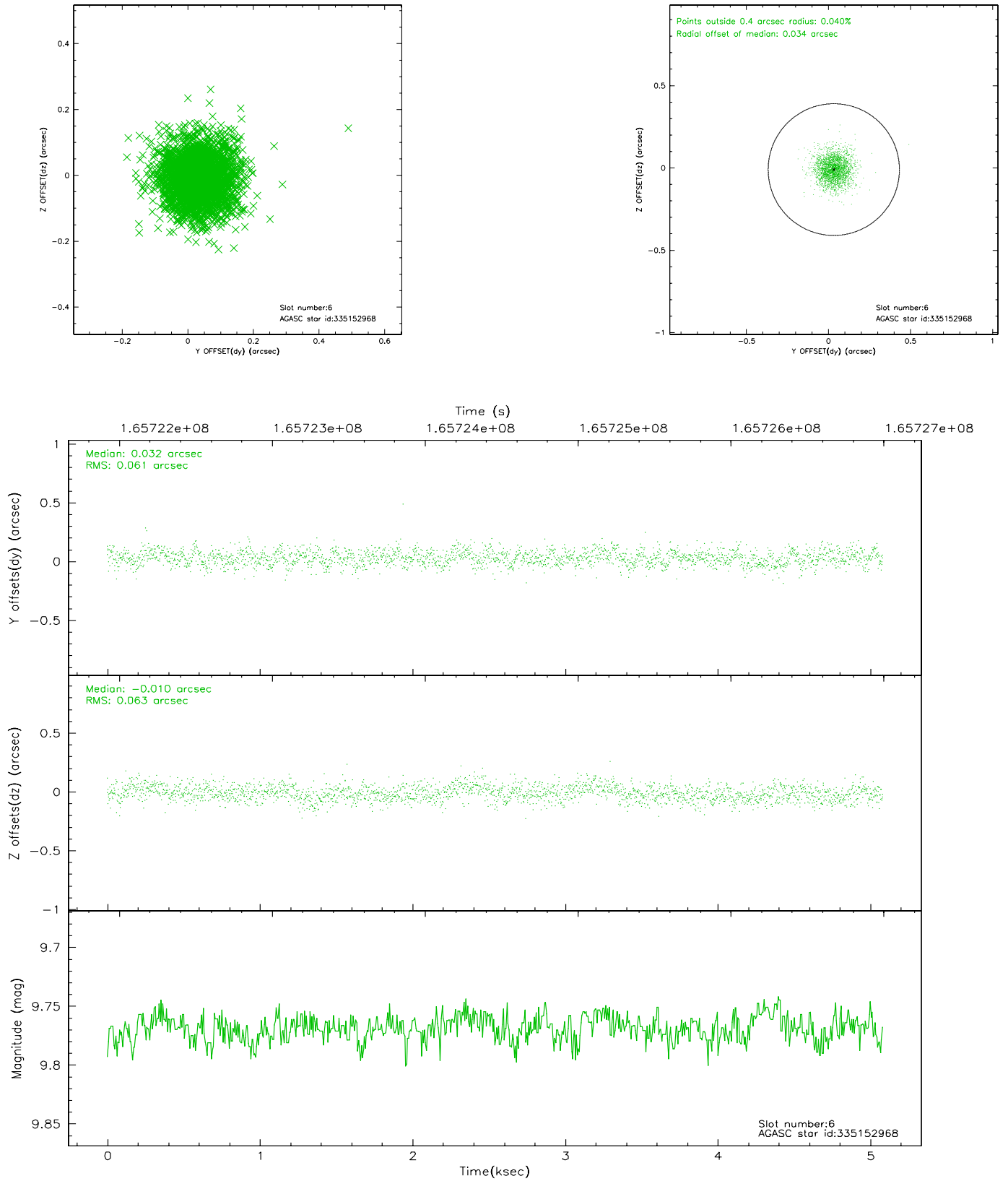
## 2.4.2 Slot 4



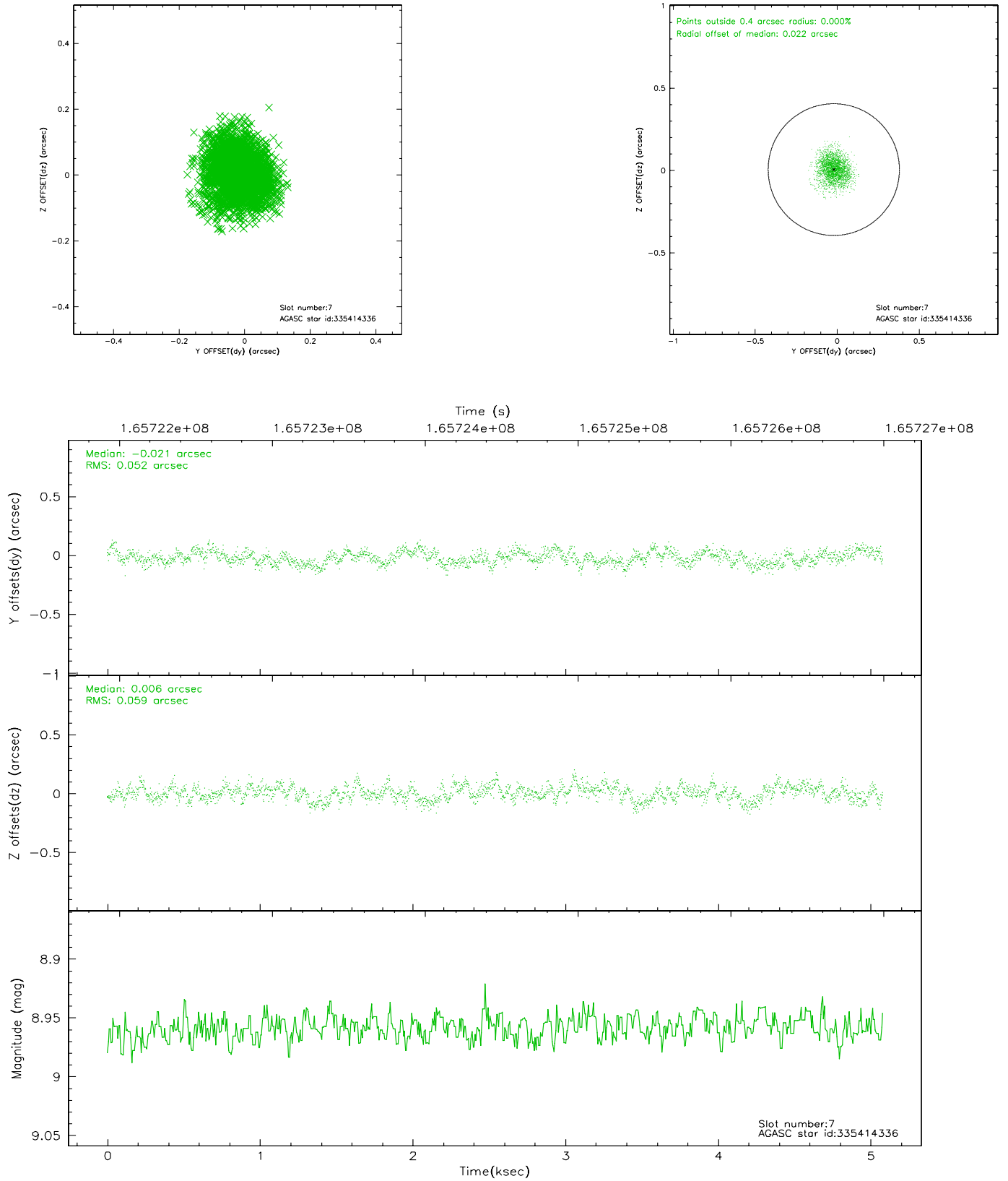
### 2.4.3 Slot 5



## 2.4.4 Slot 6

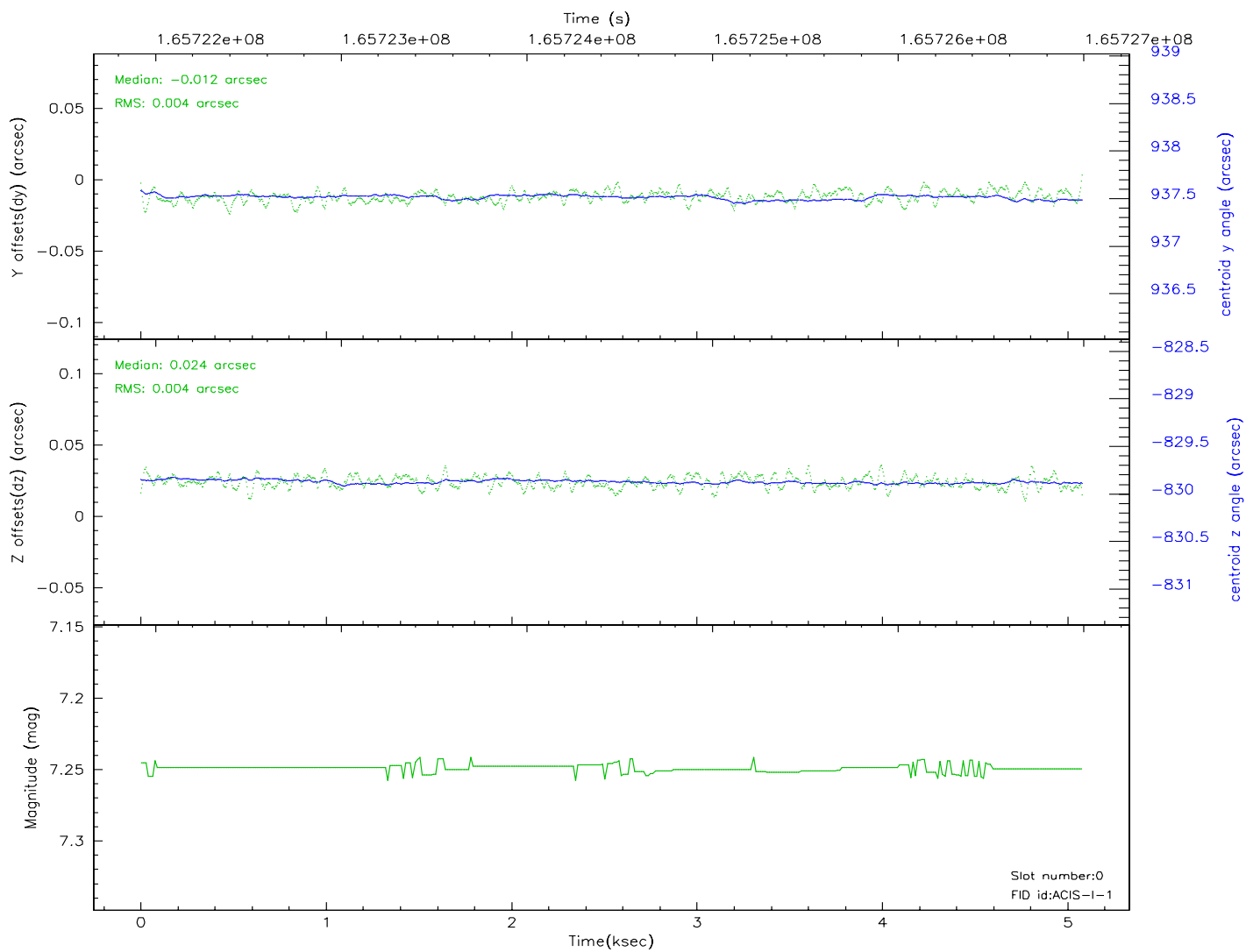
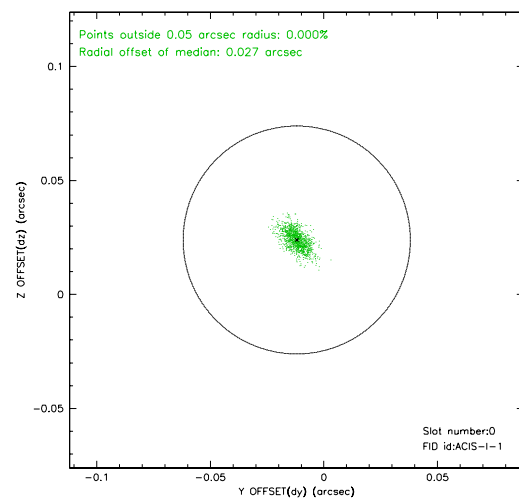
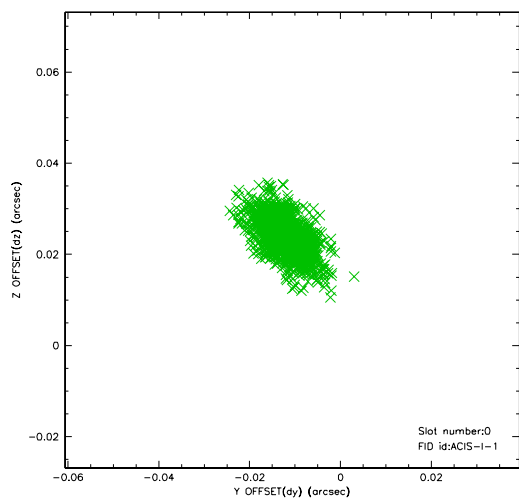


## 2.4.5 Slot 7

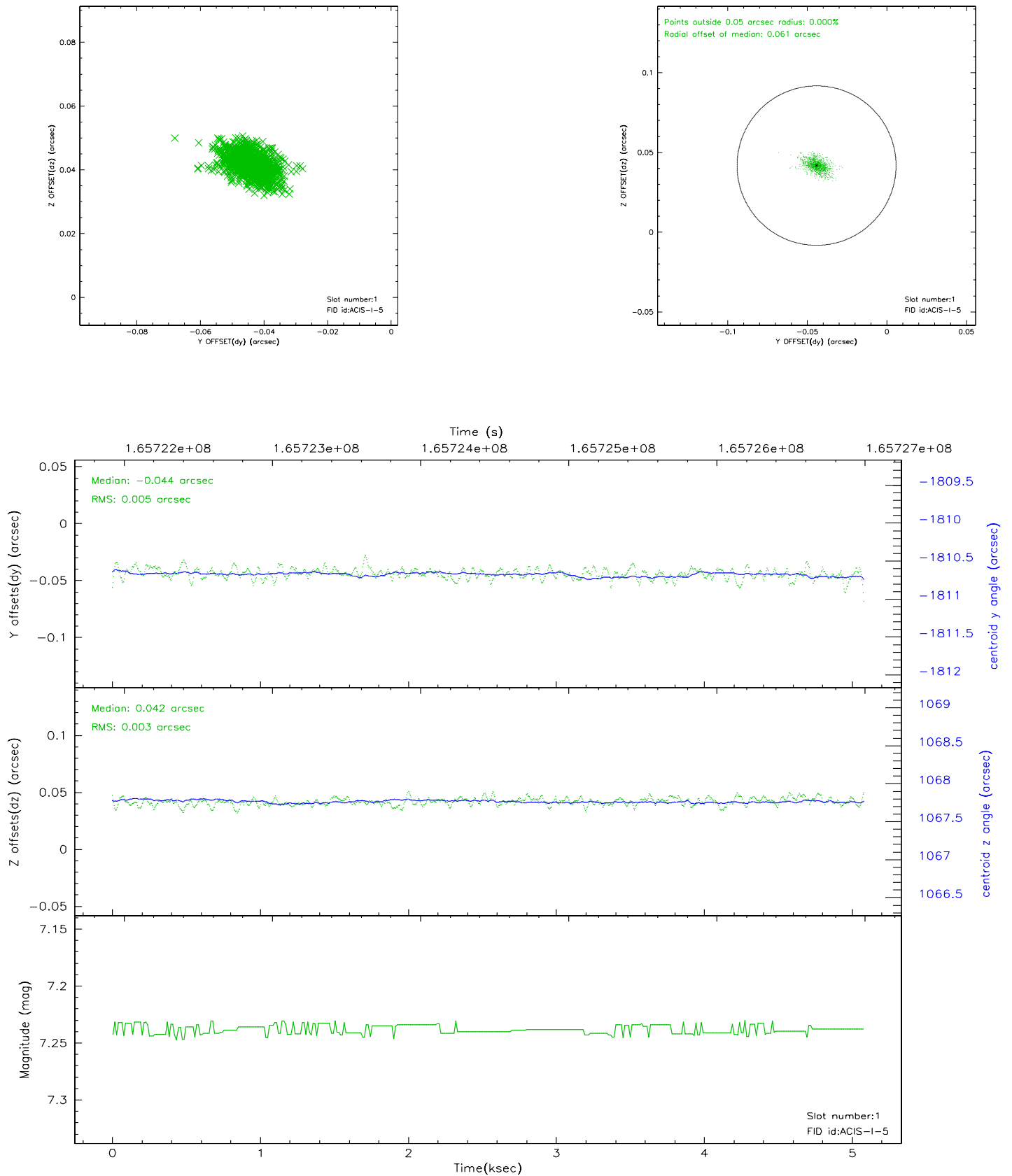


## 2.5 FID Slots

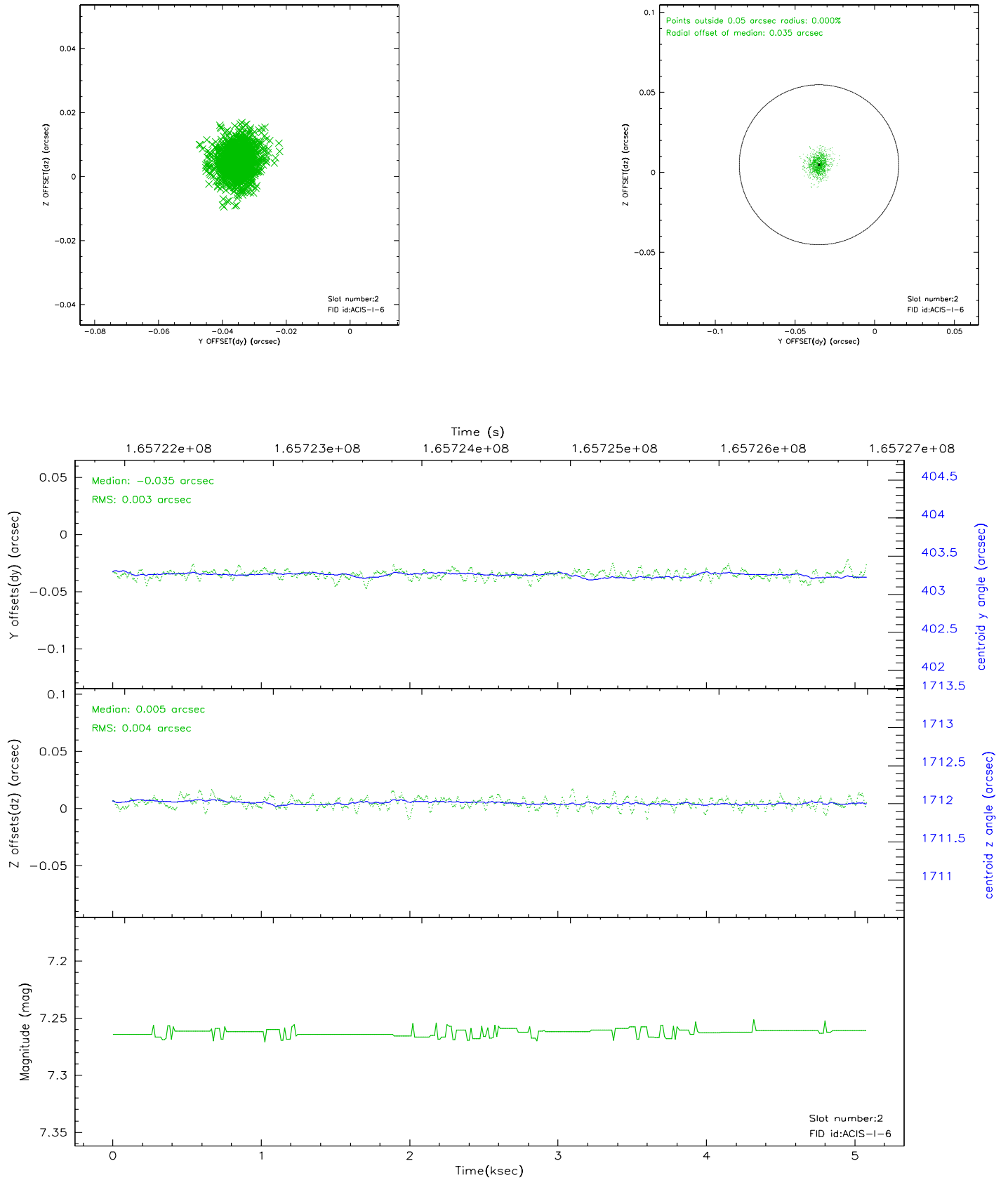
### 2.5.1 Slot 0



## 2.5.2 Slot 1



### 2.5.3 Slot 2





### 3 Point Sources

## A Summary

### A.1 Status

V&V Scientist	Jen Lauer
V&V Date (YYYY-MM-DD)	2006.07.30
V&V Edition	1
V&V Disposition and Status	OK
V&V Charge Time	4.671

### A.2 Comments