

# V&V Reference Report

## L2 ASCDS Version : 7.6.8

Observation 3629 - L2 Version 001  
Chandra X-Ray Center

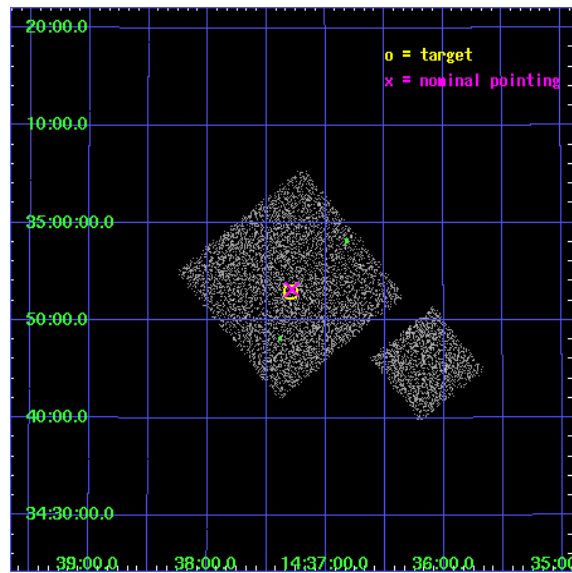
L2 Processing Date : Jul 30 2006

## Contents

<b>1</b>	<b>Front</b>	<b>2</b>
<b>2</b>	<b>OBI</b>	<b>3</b>
2.1	OBI . . . . .	3
2.1.1	Images . . . . .	3
2.1.2	Bias . . . . .	3
2.1.3	Parameters . . . . .	4
2.1.4	Events . . . . .	4
2.2	Compared Parameters . . . . .	5
2.3	Aspect . . . . .	6
2.4	Star Slots . . . . .	9
2.4.1	Slot 3 . . . . .	9
2.4.2	Slot 4 . . . . .	10
2.4.3	Slot 5 . . . . .	11
2.4.4	Slot 6 . . . . .	12
2.4.5	Slot 7 . . . . .	13
2.5	FID Slots . . . . .	14
2.5.1	Slot 0 . . . . .	14
2.5.2	Slot 1 . . . . .	15
2.5.3	Slot 2 . . . . .	16
<b>3</b>	<b>Point Sources</b>	<b>17</b>
<b>A</b>	<b>Summary</b>	<b>18</b>
A.1	Status . . . . .	18
A.2	Comments . . . . .	18

# 1 Front

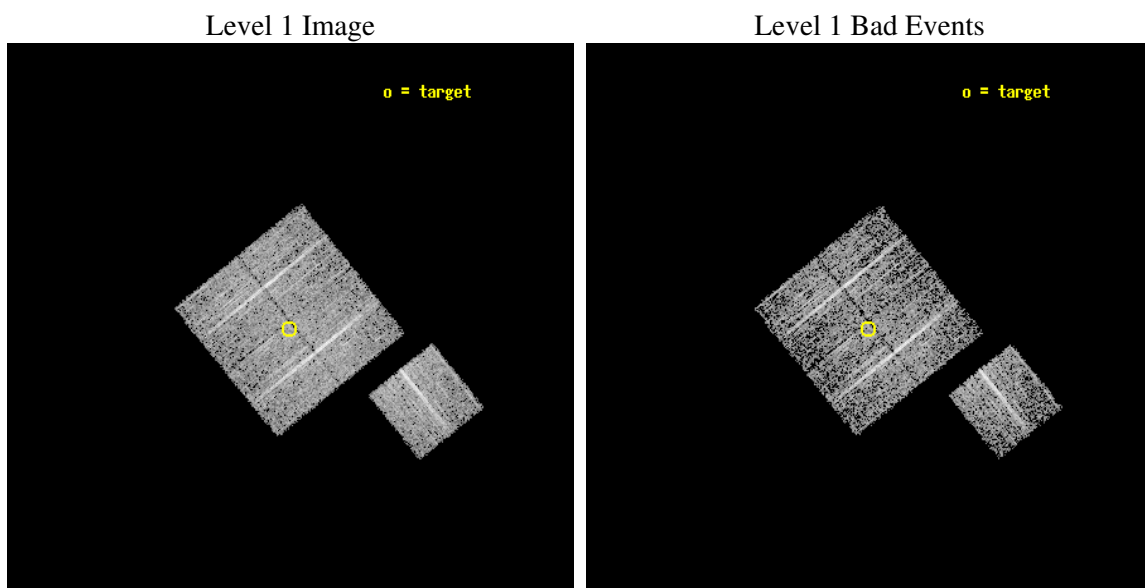
seq_num	900229
obs_id	3629
title	CHANDRA LARGE SCALE SURVEY OF THE NOAO BOOTES DEEP FIELD
observer	Dr. Stephen Murray
object	NOAO FIELD F50
dtcycle	0
cycle	P
ra_targ	219.323765
dec_targ	34.882776
ra_nom	219.32109764516
dec_nom	34.886798011002
roll_nom	141.01022448188
revision	2
ontime	4674.7999910116
livetime	4613.7202875914
ontime0	4674.7999910116
ontime1	4674.7999910116
ontime2	4674.7999910116
ontime3	4674.7999910116
ontime6	4674.7999910116
l2events	9316



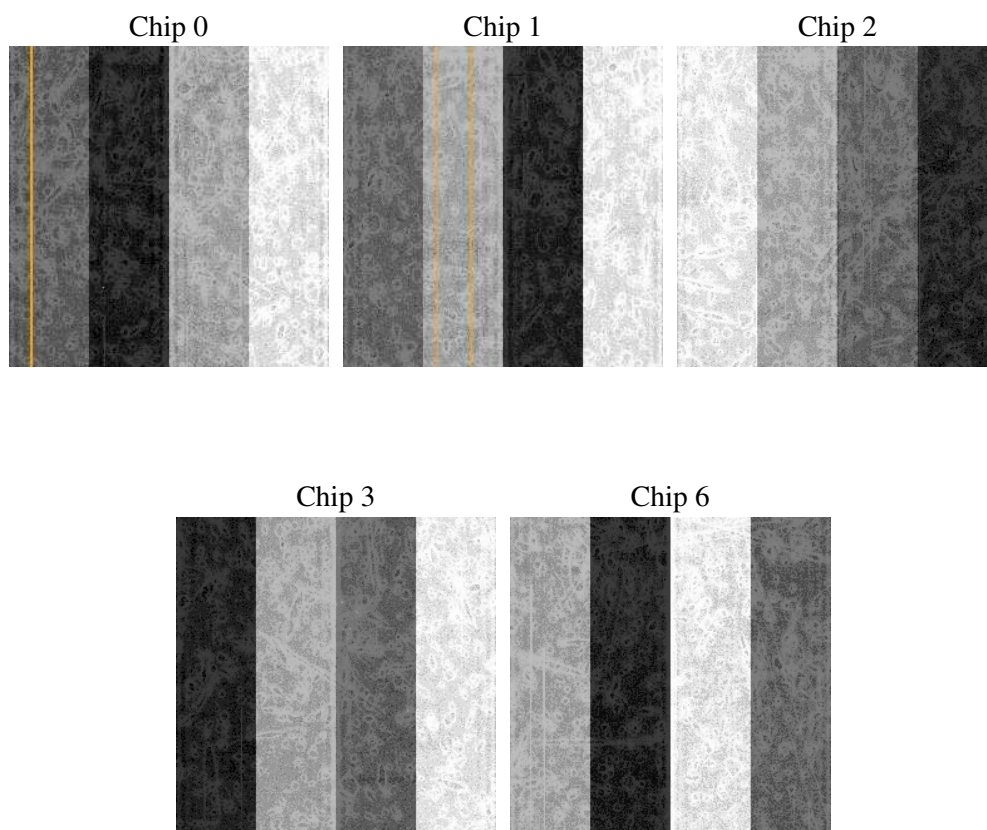
## 2 OBI

### 2.1 OBI

#### 2.1.1 Images



#### 2.1.2 Bias



### 2.1.3 Parameters

obi_num	1
ascdsver	7.6.8
caldsver	3.2.2
date	2006-07-30T05:33:49
revision	2

sched_exp_time	4900.000000
ontime	4680.1000674665
ontime0	4680.1000674963
ontime1	4680.1000873744
ontime2	4680.1000674963
ontime3	4680.1000674665
ontime6	4680.1000475883
l1events	113352

### 2.1.4 Events

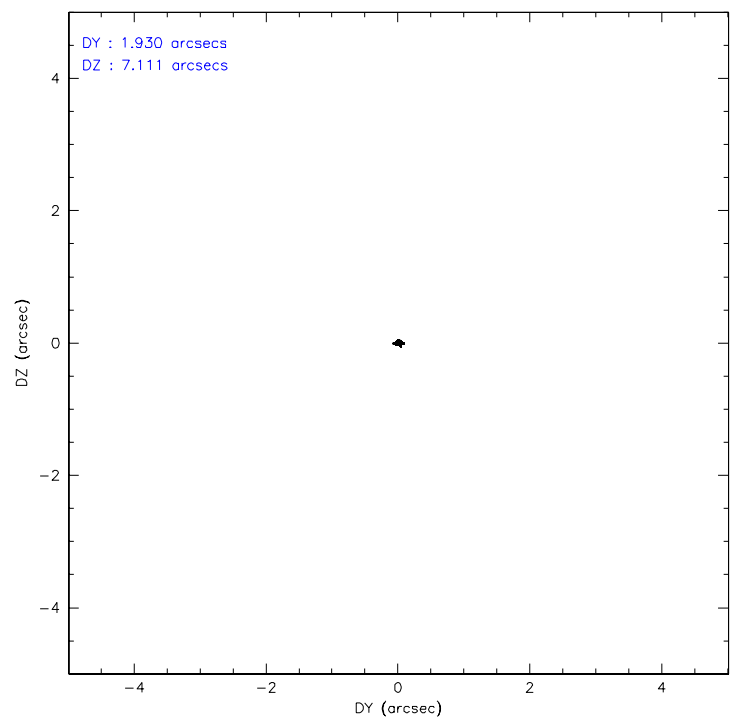
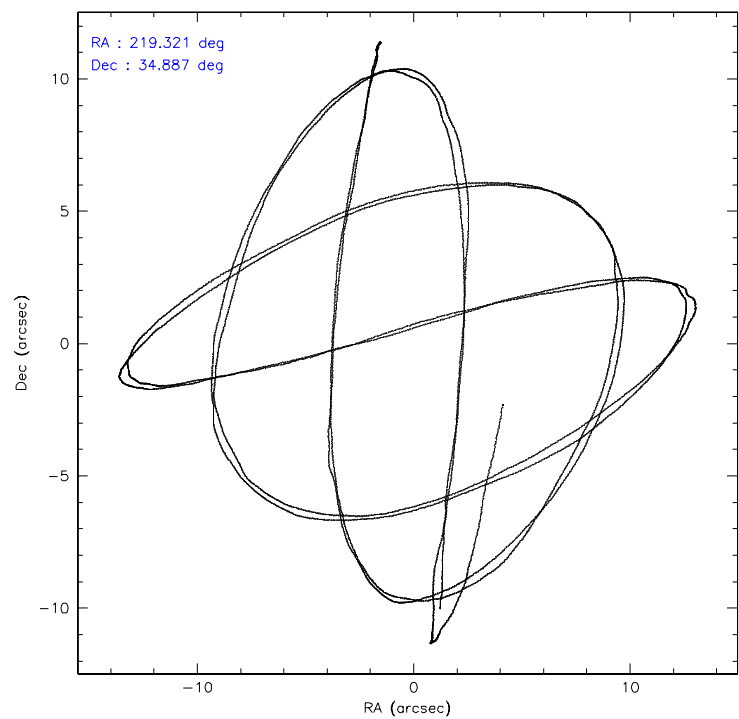
	ccd 0	ccd 1	ccd 2	ccd 3	ccd 6
level 1 events	21940	21687	23002	22911	23812
rejected events	19686	19330	20717	20763	21385
rejected %	89%	89%	90%	90%	89%

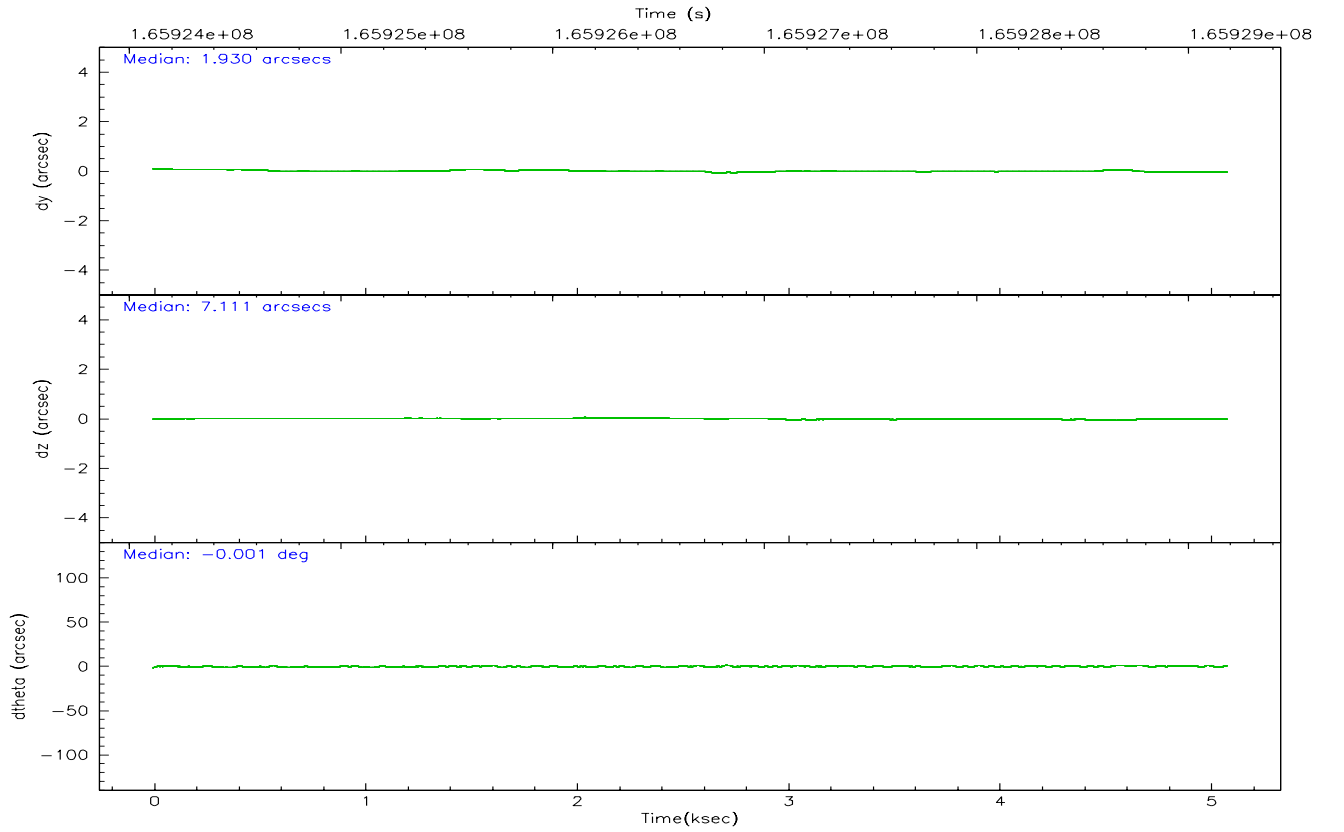
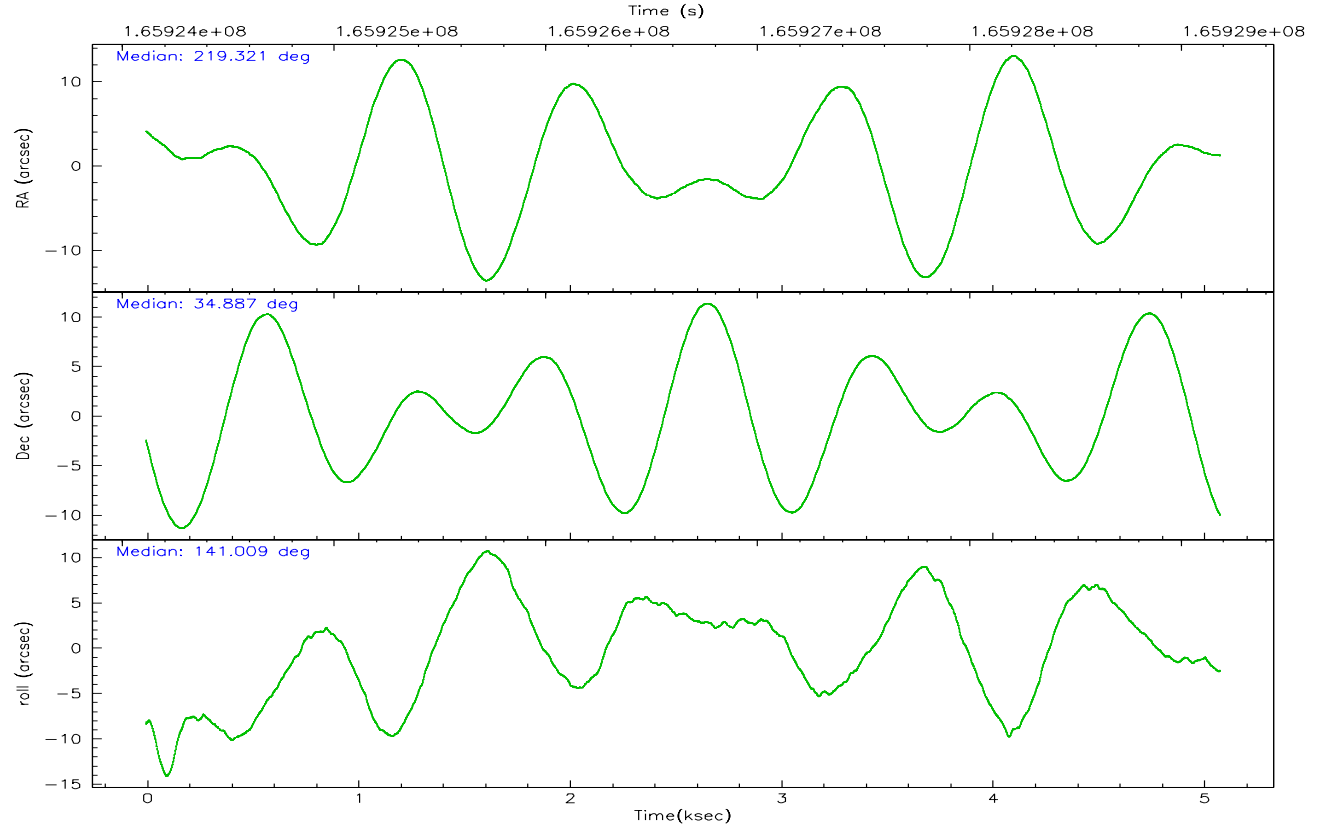
	ccd 0	ccd 1	ccd 2	ccd 3	ccd 6
grade 0 events	771	826	908	747	901
	3%	3%	3%	3%	3%
grade 1 events	15	10	9	16	10
	0%	0%	0%	0%	0%
grade 2 events	508	518	505	449	493
	2%	2%	2%	1%	2%
grade 3 events	300	269	253	281	297
	1%	1%	1%	1%	1%
grade 4 events	254	303	265	272	258
	1%	1%	1%	1%	1%
grade 5 events	644	722	599	752	778
	2%	3%	2%	3%	3%
grade 6 events	422	444	356	400	479
	1%	2%	1%	1%	2%
grade 7 events	19026	18595	20107	19994	20596
	86%	85%	87%	87%	86%

## 2.2 Compared Parameters

Parameter	Planned	Actual	Parameter	Planned	Actual
Instrument	ACIS	ACIS	Obspar format version number	6	6
Detector	ACIS-01236	ACIS-01236	Obspar file type	PREDICTED	ACTUAL
Grating	NONE	NONE	Obspar update status	NONE	UPDATED
Data mode	VFAINT	VFAINT	On-chip summing requested	N	N
Observation mode	POINTING	POINTING	Subarray requested	NONE	NONE
Pointing RA	219.354103	219.3210976451626	Alternating exposures requested	N	N
Pointing Dec	34.882698	34.88679801100177	Primary exposure time	0.000000	3.1
Pointing Roll	140.782648	141.0102244818753			
SIM focus pos (mm)	-0.782348	-0.7809083437167272			
SIM defocus (mm)	0	0.001439871863259334			
SIM translation stage pos (mm)	-233.592463	-233.5874344608287			
SIM translation stage offset (mm)	0	-0.005018542100998502			
Observation start time	165924287.184000	165923910.64744			
Observation start date	2003-04-05T10:03:43	2003-04-05T09:58:30			
Observation end time	165929187.184000	165929320.59767			
Observation end date	2003-04-05T11:25:23	2003-04-05T11:28:40			
Read mode	TIMED	TIMED			

## 2.3 Aspect





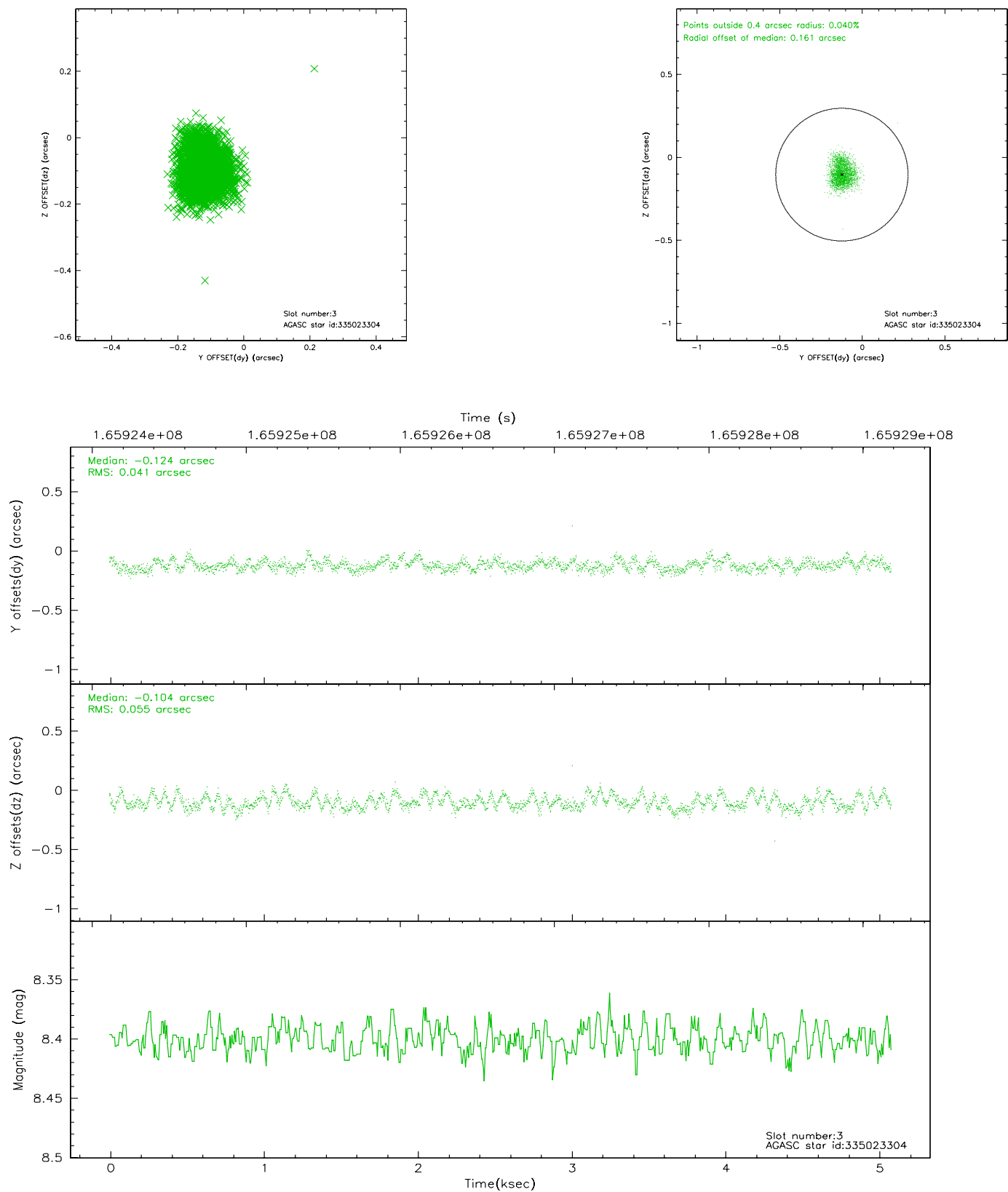
### Slot Statistics

slot	status	id	mag	n_pts	med_dy	med_dz	dr1	dr2	ra	dec	mean_y	mean_z
0	FID	ACIS-I-1	7.25	1240	-0.015	0.042	0.006	0.011	0.000000	0.000000	937.85	-830.49
1	FID	ACIS-I-5	7.23	1240	-0.041	0.044	0.006	0.010	0.000000	0.000000	-1809.57	1066.47
2	FID	ACIS-I-6	7.26	1239	-0.036	-0.016	0.006	0.011	0.000000	0.000000	402.14	1712.22
3	GUIDE	335023304	8.40	2480	-0.124	-0.104	0.074	0.115	218.883608	34.686545	634.79	1425.05
4	GUIDE	335153184	8.61	2480	0.114	0.075	0.055	0.091	220.141256	34.877917	-1805.53	-1463.01
5	GUIDE	335153312	9.31	2479	0.083	-0.028	0.076	0.125	220.353946	34.889761	-2262.23	-1898.24
6	GUIDE	335414336	8.96	2477	-0.078	-0.131	0.061	0.099	218.979022	35.090910	1330.53	115.33
7	GUIDE	335545712	9.87	2479	0.003	0.184	0.107	0.174	220.165930	35.199137	-1123.05	-2399.89

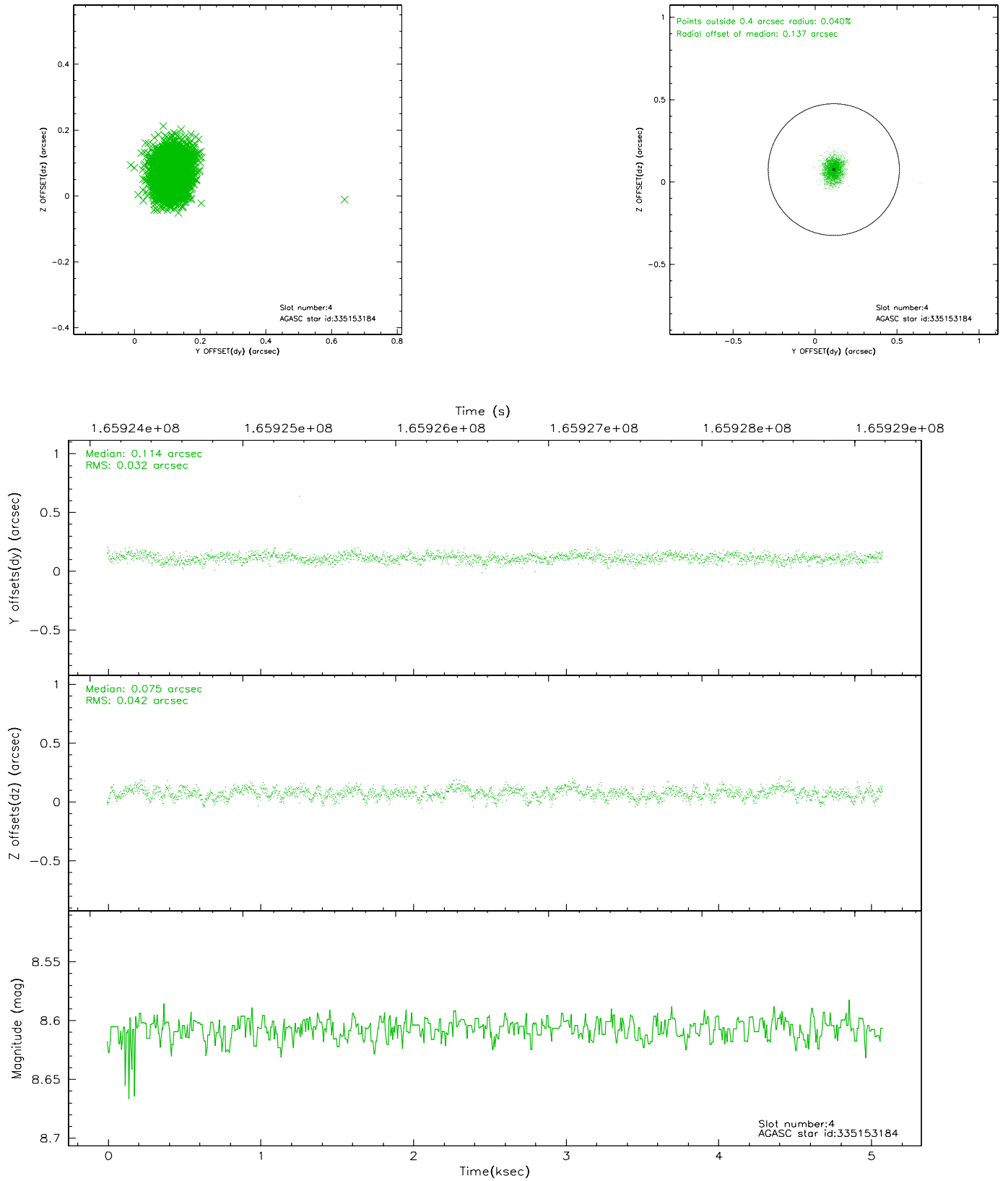


## 2.4 Star Slots

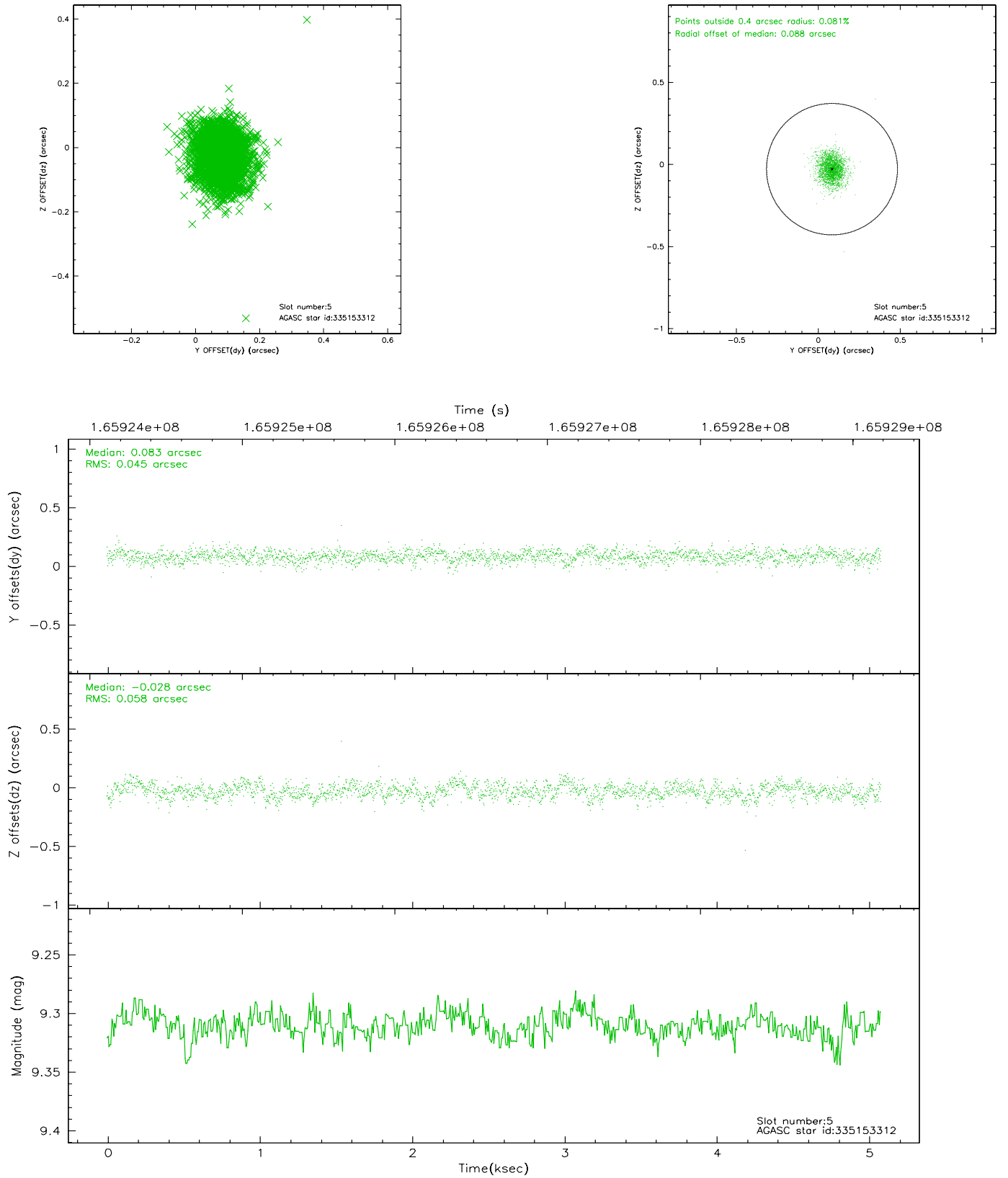
### 2.4.1 Slot 3



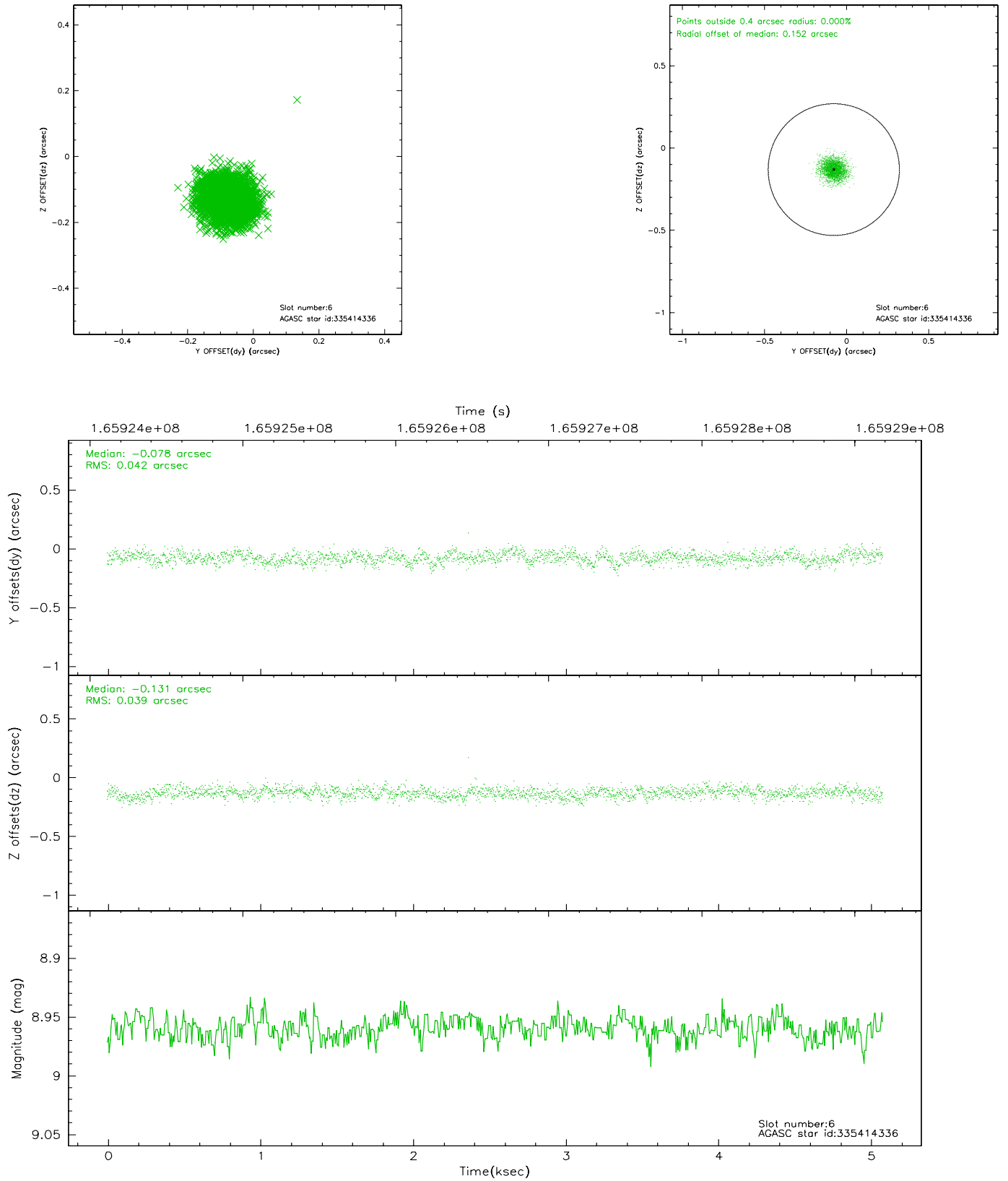
## 2.4.2 Slot 4



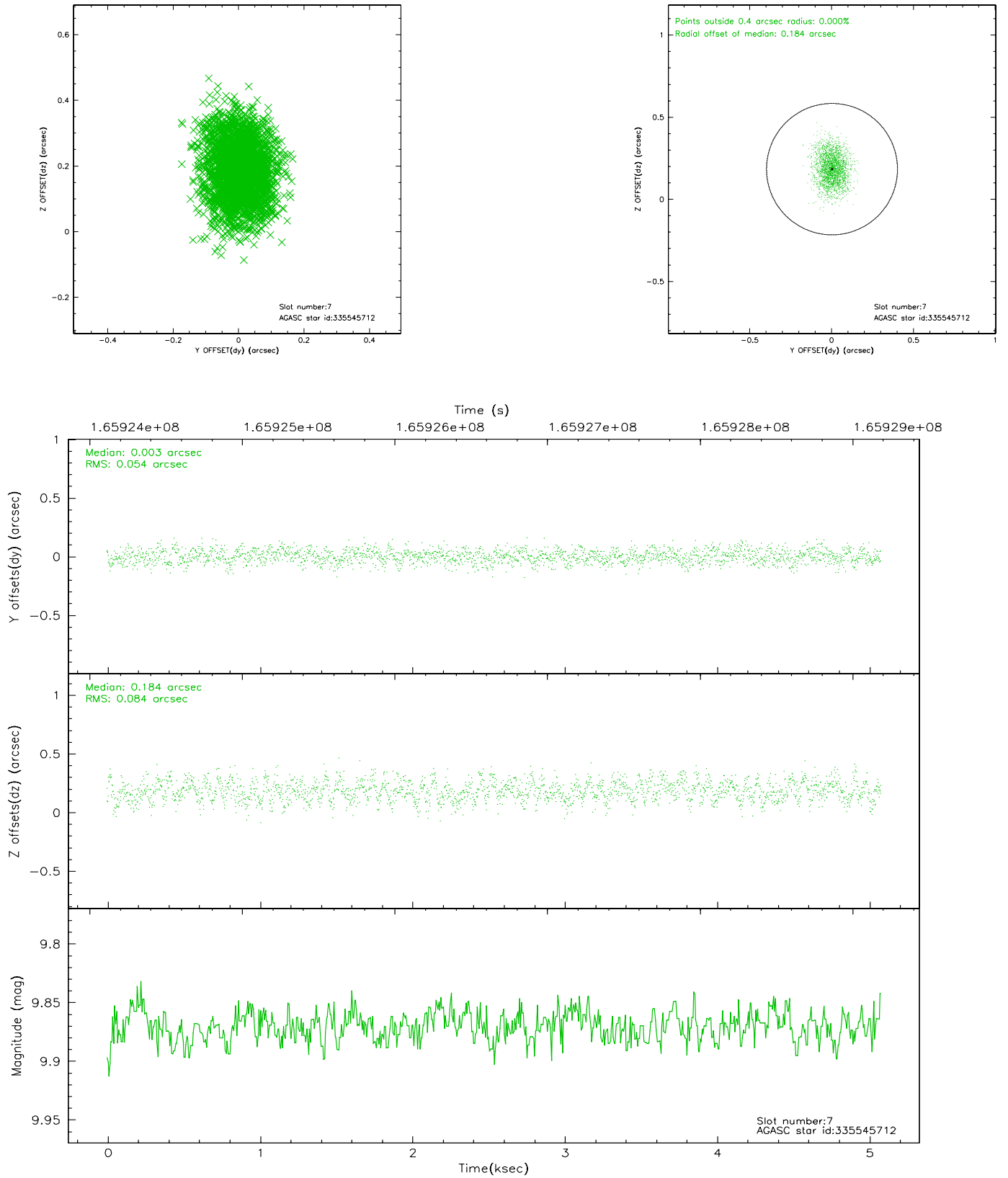
### 2.4.3 Slot 5



## 2.4.4 Slot 6

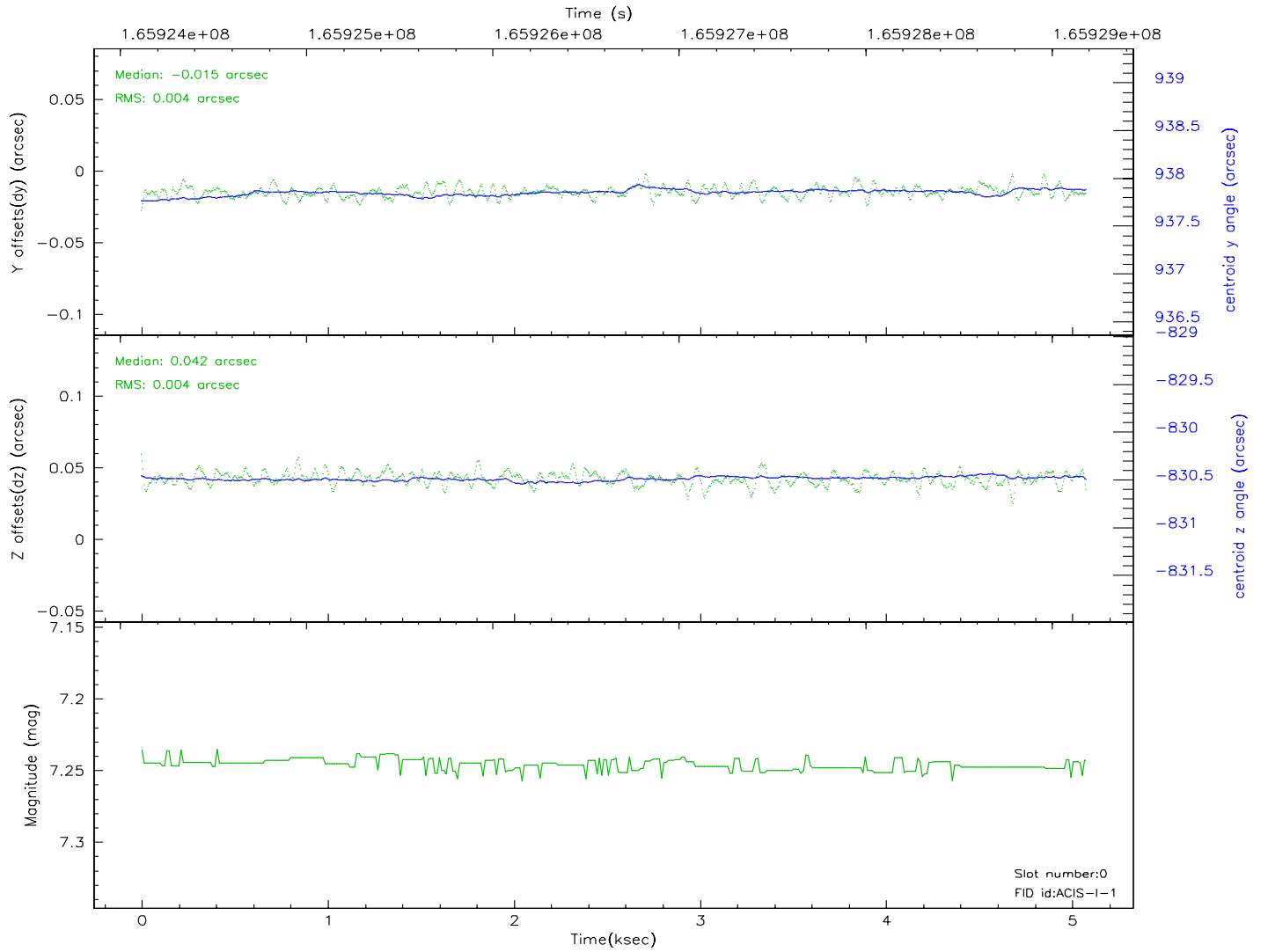
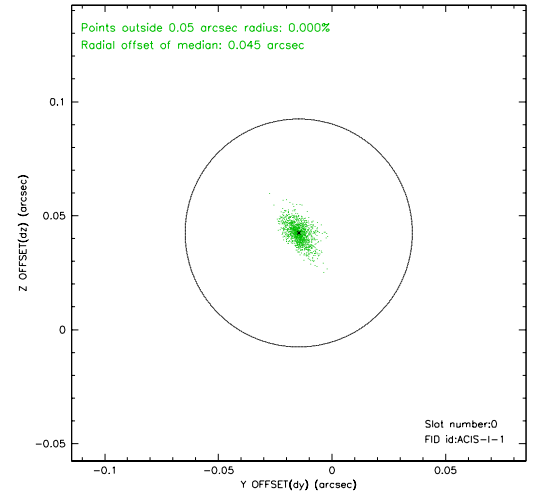
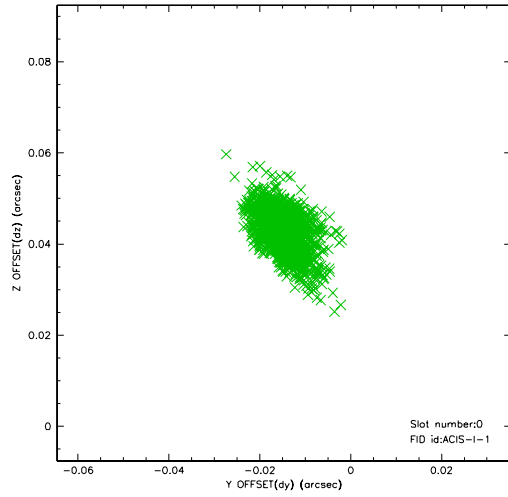


## 2.4.5 Slot 7

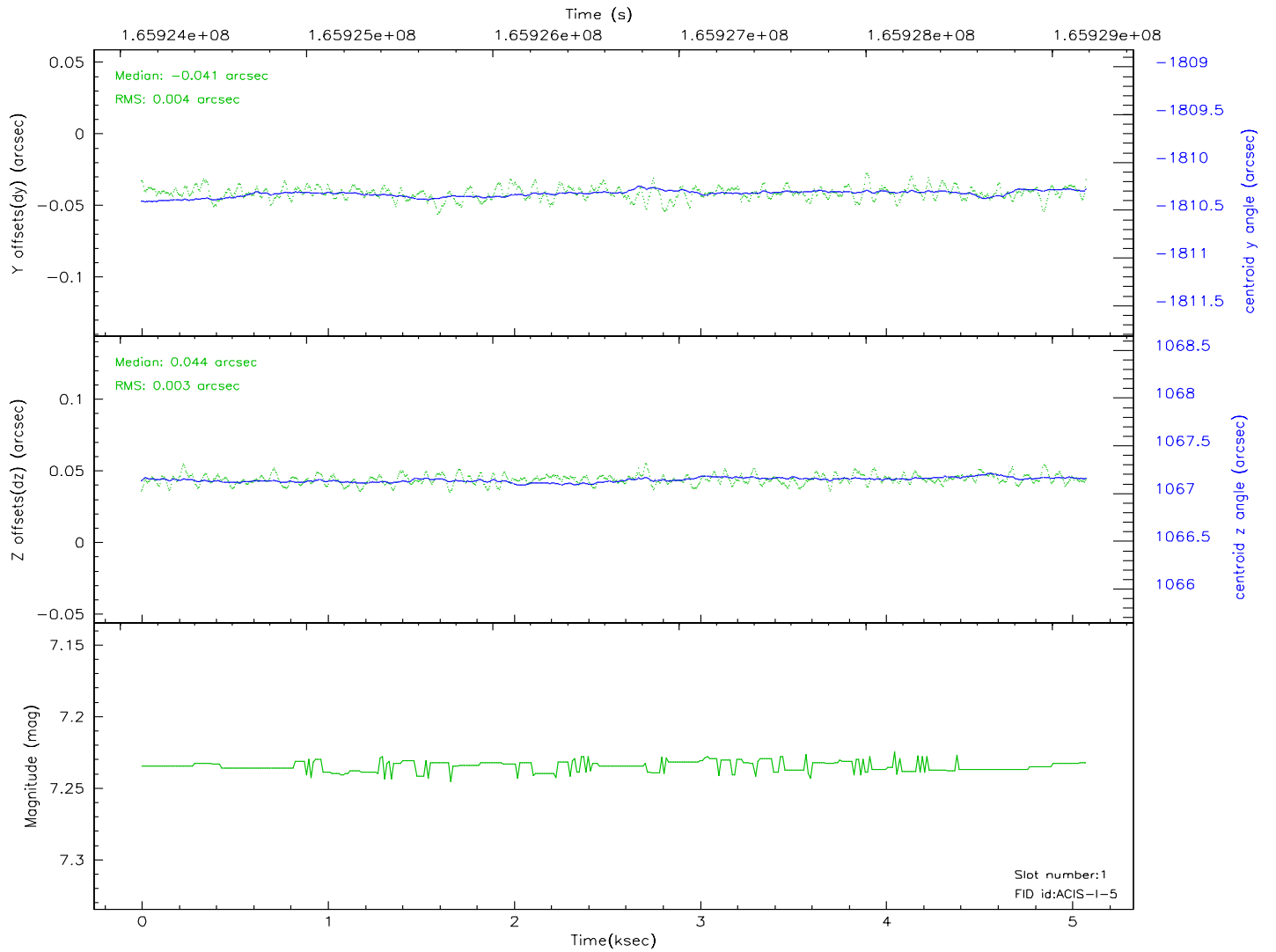
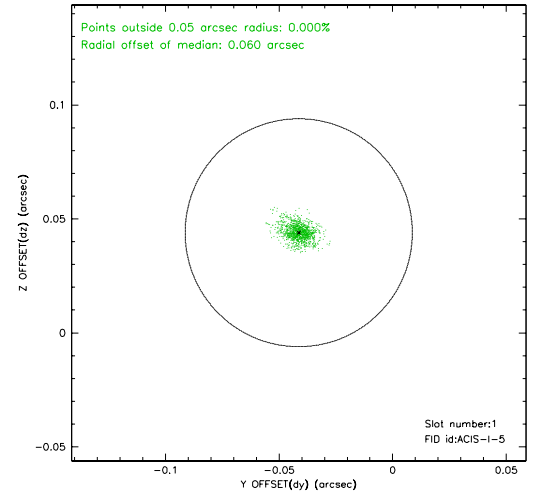
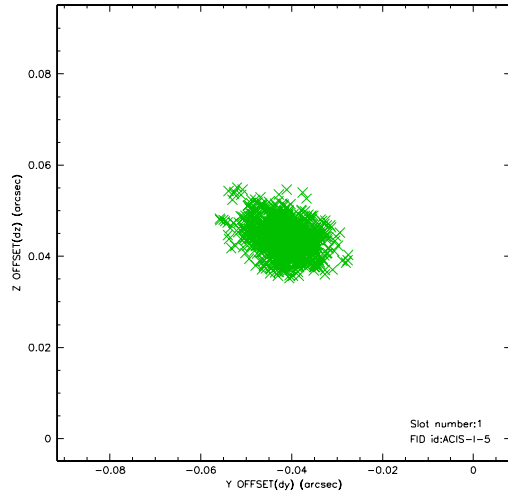


## 2.5 FID Slots

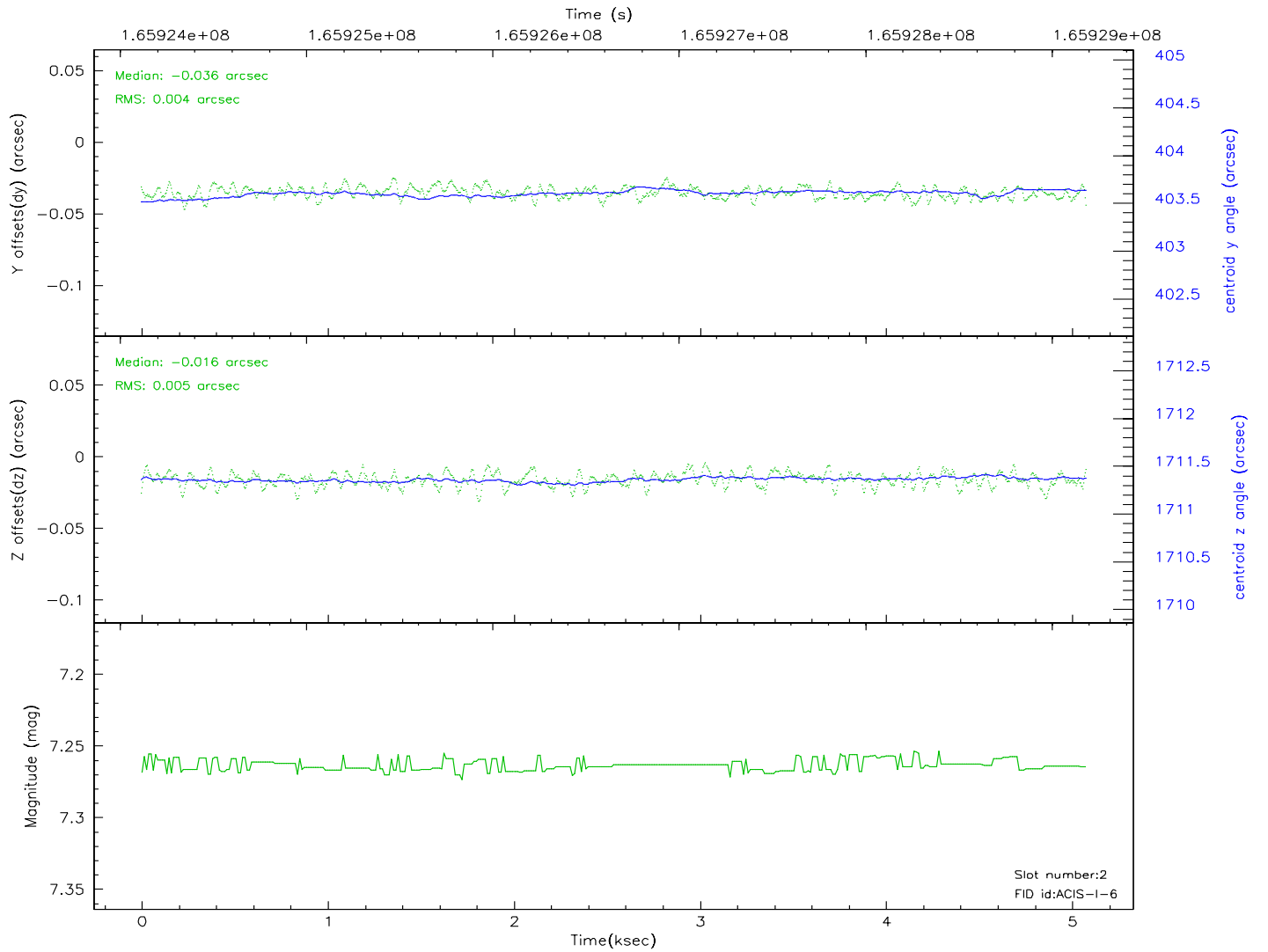
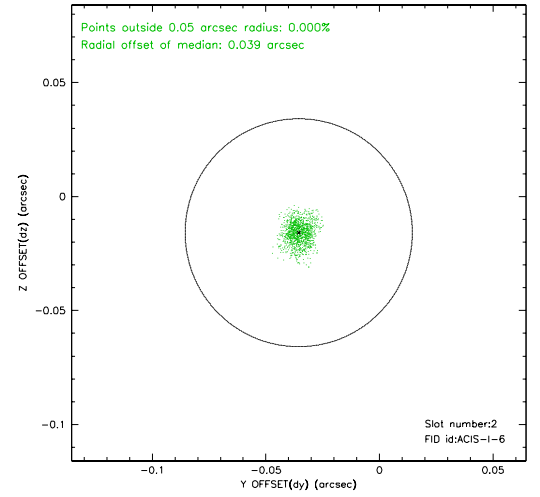
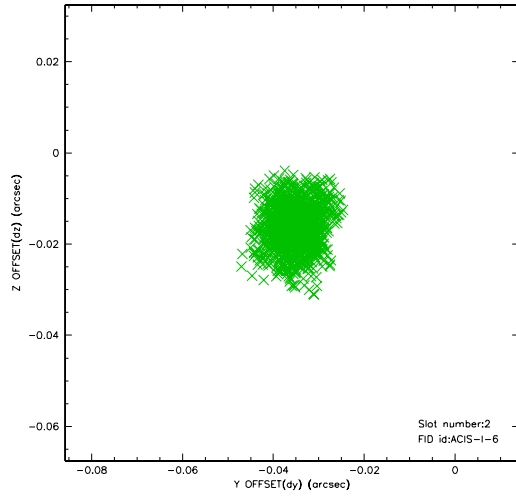
### 2.5.1 Slot 0



## 2.5.2 Slot 1



### 2.5.3 Slot 2





### 3 Point Sources

5.24 arcmin



## A Summary

### A.1 Status

V&V Scientist	Jen Lauer
V&V Date (YYYY-MM-DD)	2006.07.30
V&V Edition	1
V&V Disposition and Status	OK
V&V Charge Time	4.674

### A.2 Comments