

V&V Reference Report

L2 ASCDS Version : 8.4.5

Observation 3626 - L2 Version 3
Chandra X-Ray Center

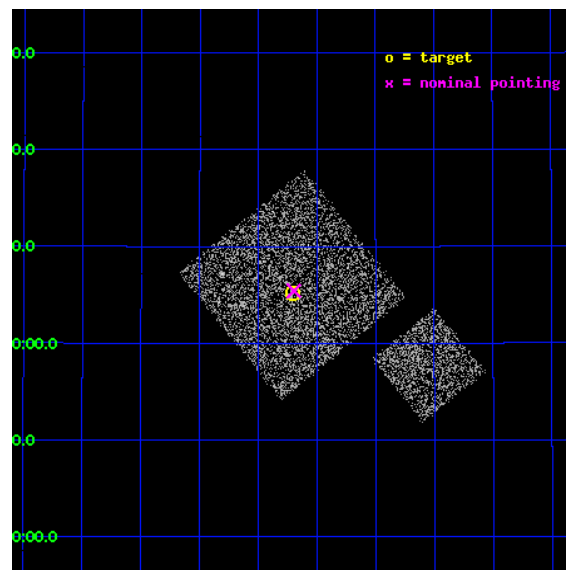
L2 Processing Date : Oct 25 2012

Contents

1	Front	2
2	OBI	3
2.1	OBI	3
2.1.1	Images	3
2.1.2	Bias	3
2.1.3	Parameters	4
2.1.4	Events	4
2.2	Compared Parameters	5
2.3	Aspect	6
2.4	Star Slots	9
2.4.1	Slot 3	9
2.4.2	Slot 4	10
2.4.3	Slot 5	11
2.4.4	Slot 6	12
2.4.5	Slot 7	13
2.5	FID Slots	14
2.5.1	Slot 0	14
2.5.2	Slot 1	15
2.5.3	Slot 2	16
A	Summary	17
A.1	Status	17
A.2	Comments	17

1 Front

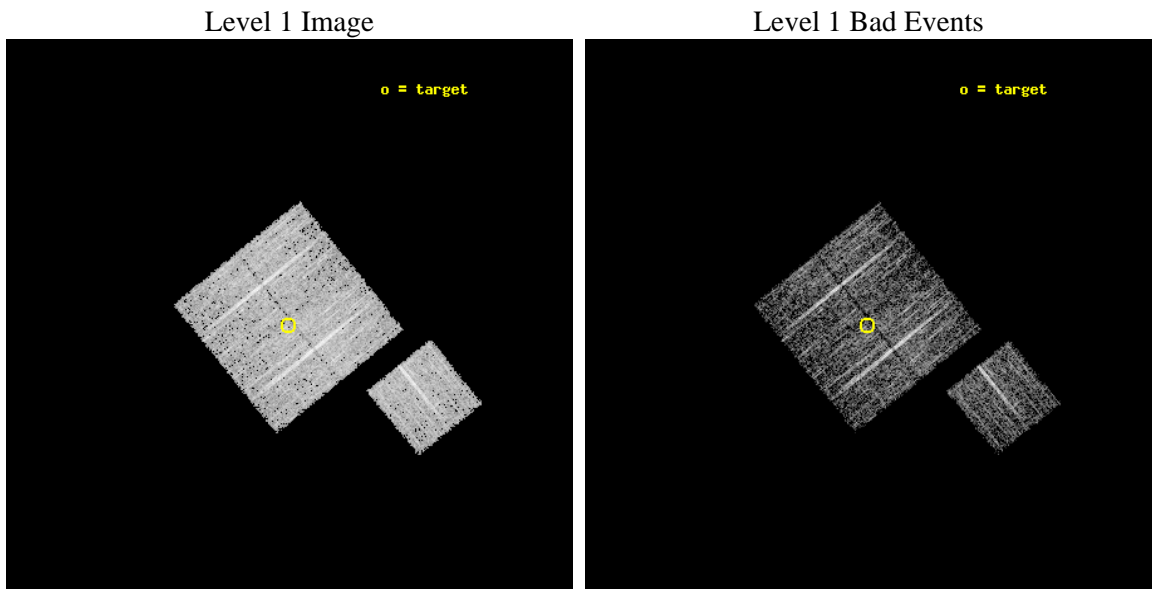
seq_num	900226	Sequence number
obs_id	3626	Observation id
title	CHANDRA LARGE SCALE SURVEY OF THE NOAO BOOTES DEEP FIELD	Proposal
observer	Dr. Stephen Murray	Principal investigator
object	NOAO FIELD F17	Source name
dtcycle	0	
cycle	P	events from which exps? Prim/Second/Both
ra_targ	218.676831	Observer's specified target RA [deg]
dec_targ	35.08647	Observer's specified target Dec [deg]
ra_nom	218.6740323322	Nominal RA [deg]
dec_nom	35.090519569334	Nominal Dec [deg]
roll_nom	141.01029810364	Nominal Roll [deg]
revision	3	Processing version of data
ontime	4776.8519416451	Sum of GTIs [s]
livetime	4714.4388543603	Livetime [s]
ontime0	4776.7288017571	Sum of GTIs [s]
ontime1	4773.6288714707	Sum of GTIs [s]
ontime2	4776.8109016418	Sum of GTIs [s]
ontime3	4776.8519416451	Sum of GTIs [s]
ontime6	4776.6877617538	Sum of GTIs [s]
l2events	9892	Number of level 2 events



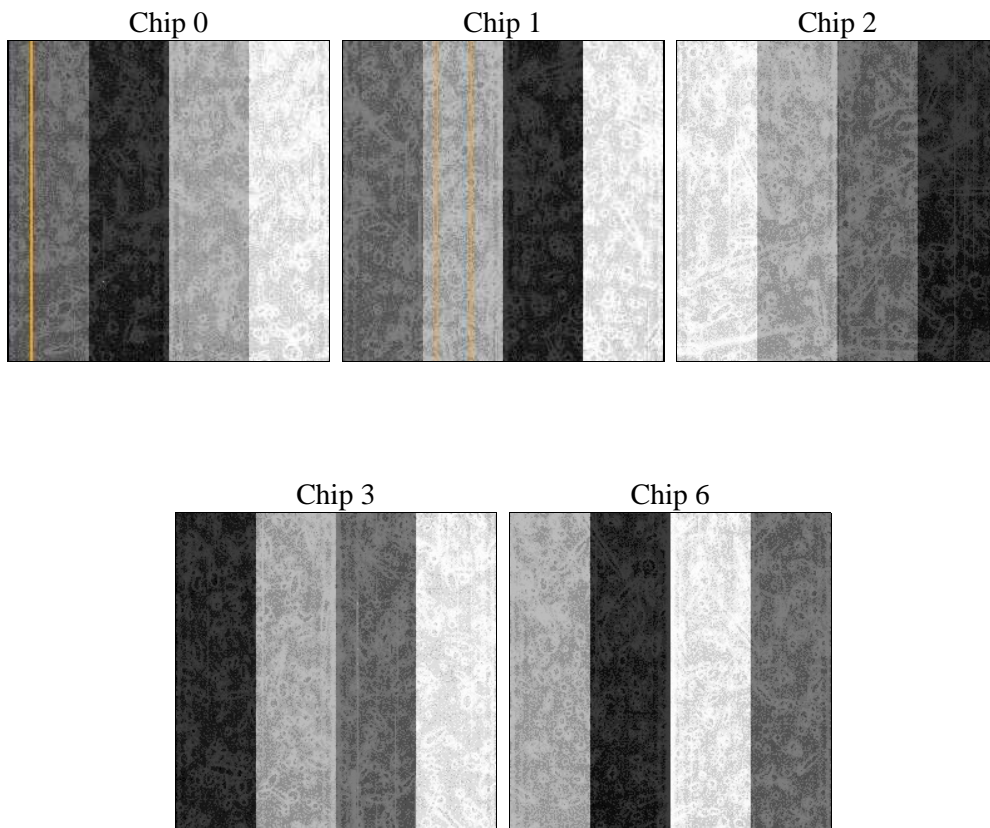
2 OBI

2.1 OBI

2.1.1 Images



2.1.2 Bias



2.1.3 Parameters

obi_num	1	Obi number	sched_exp_time	5000.000000	[s] Scheduled observation exposure time
ascdsver	8.4.5	Processing system revision	ontime	4776.8519416451	Sum of GTIs [s]
caldsver	4.5.2	 	ontime0	4776.7288017571	Sum of GTIs [s]
date	2012-10-25T23:40:31	Date and time of file creation	ontime1	4773.6288714707	Sum of GTIs [s]
revision	3	Processing version of data	ontime2	4776.8109016418	Sum of GTIs [s]
			ontime3	4776.8519416451	Sum of GTIs [s]
			ontime6	4776.6877617538	Sum of GTIs [s]
			l1events	120587	Number of level 1 events

2.1.4 Events

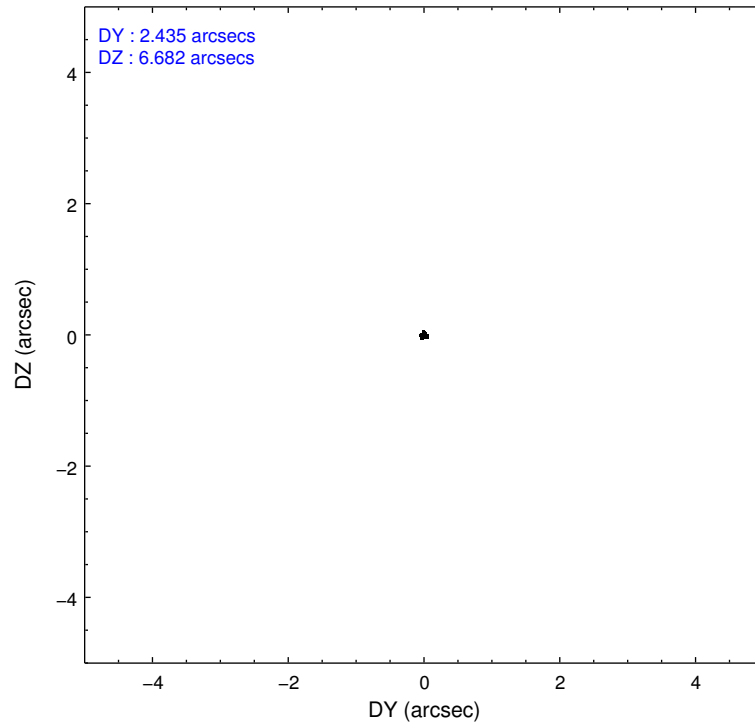
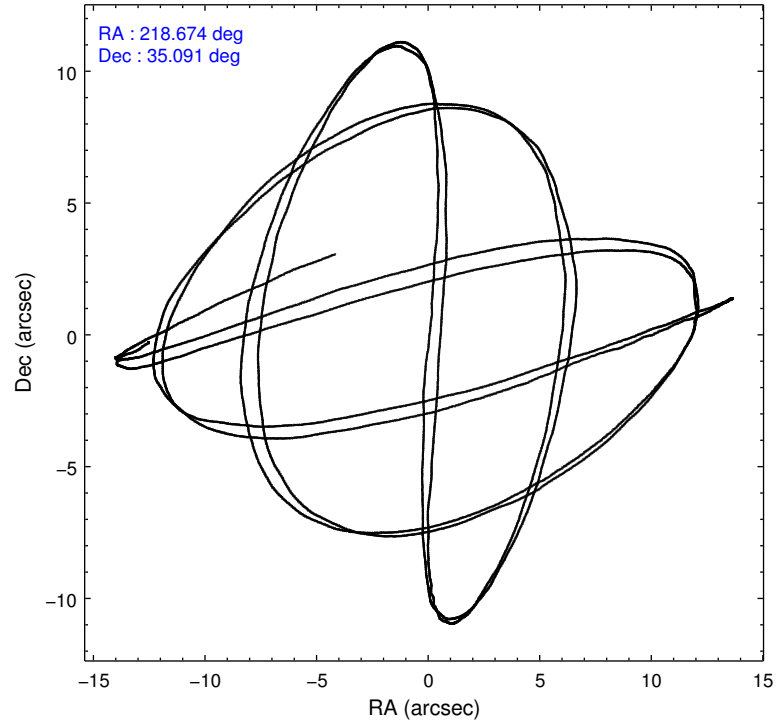
	ccd 0	ccd 1	ccd 2	ccd 3	ccd 6
level 1 events	23618	22858	26454	24206	23451
rejected events	21307	20281	24041	21875	21042
rejected %	90%	88%	90%	90%	89%

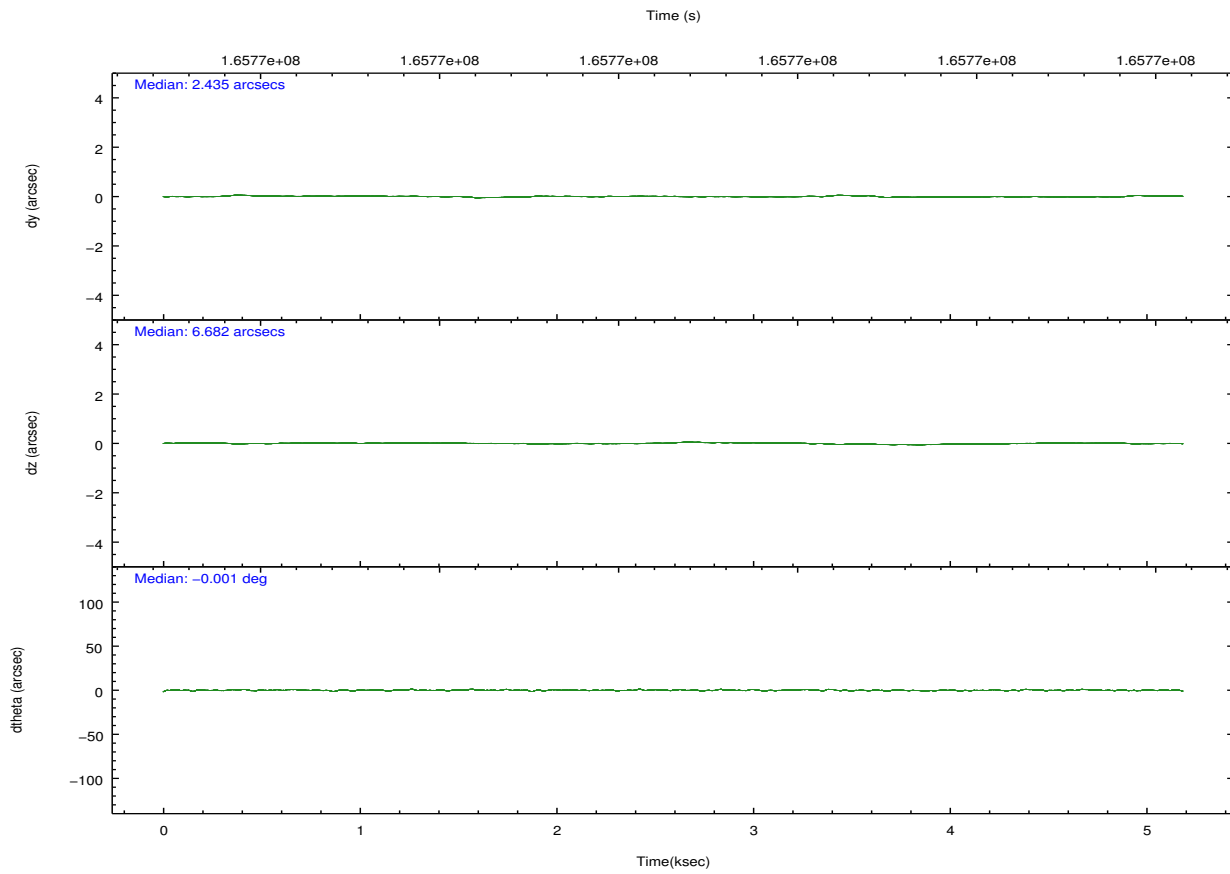
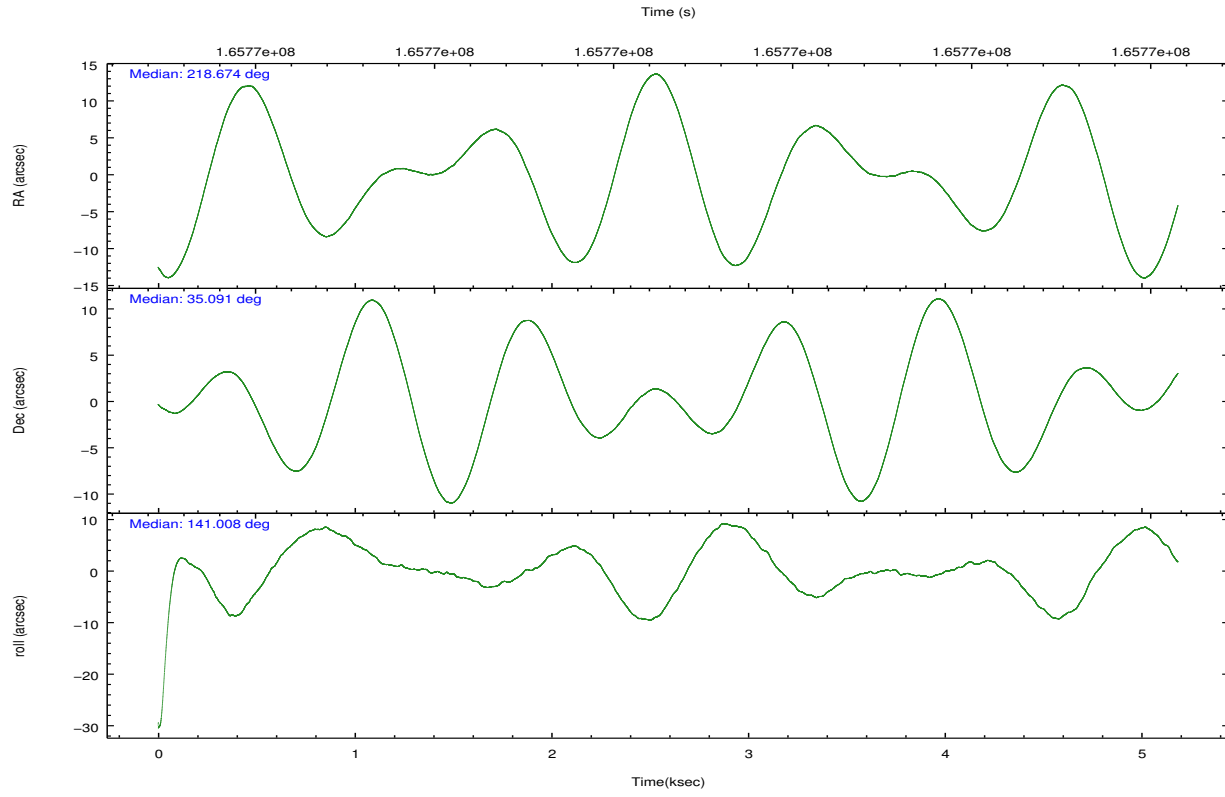
	ccd 0	ccd 1	ccd 2	ccd 3	ccd 6
grade 0 events	852	885	905	888	922
	3%	3%	3%	3%	3%
grade 1 events	11	9	9	10	10
	0%	0%	0%	0%	0%
grade 2 events	495	520	586	495	490
	2%	2%	2%	2%	2%
grade 3 events	282	327	279	242	283
	1%	1%	1%	0%	1%
grade 4 events	255	316	240	252	252
	1%	1%	0%	1%	1%
grade 5 events	690	766	714	752	784
	2%	3%	2%	3%	3%
grade 6 events	429	530	404	455	465
	1%	2%	1%	1%	1%
grade 7 events	20604	19505	23317	21112	20245
	87%	85%	88%	87%	86%

2.2 Compared Parameters

Parameter	Planned	Actual	Parameter	Planned	Actual
Instrument	ACIS	ACIS	Obspar format version number	7	7
Detector	ACIS-01236	ACIS-01236	Obspar file type	PREDICTED	ACTUAL
Grating	NONE	NONE	Obspar update status	NONE	UPDATED
Data mode	VFAINT	VFAINT	Number of optional ACIS chips dropped	0	0
Observation mode	POINTING	POINTING	On-chip summing requested	N	N
[deg] Pointing RA	218.707234	218.6740323321952	Subarray requested	NONE	NONE
[deg] Pointing Dec	35.086386	35.09051956933438	Alternating exposures requested	N	N
[deg] Pointing Roll	140.782528	141.0102981036356	[s] Primary exposure time	0.000000	3.1
[mm] SIM focus pos	-0.782348	-0.7809083437167272			
[mm] SIM defocus	0	0.001439871863259334			
[mm] SIM translation stage pos	-233.592463	-233.5874344608287			
[mm] SIM translation stage offset	0	-0.005018542100998502			
[s] Observation start time (MET)	165765895.184000	165765519.44075			
Observation start date	2003-04-03T14:03:51	2003-04-03T13:58:39			
[s] Observation end time (MET)	165770895.184000	165771029.32849			
Observation end date	2003-04-03T15:27:11	2003-04-03T15:30:29			
Read mode	TIMED	TIMED			

2.3 Aspect



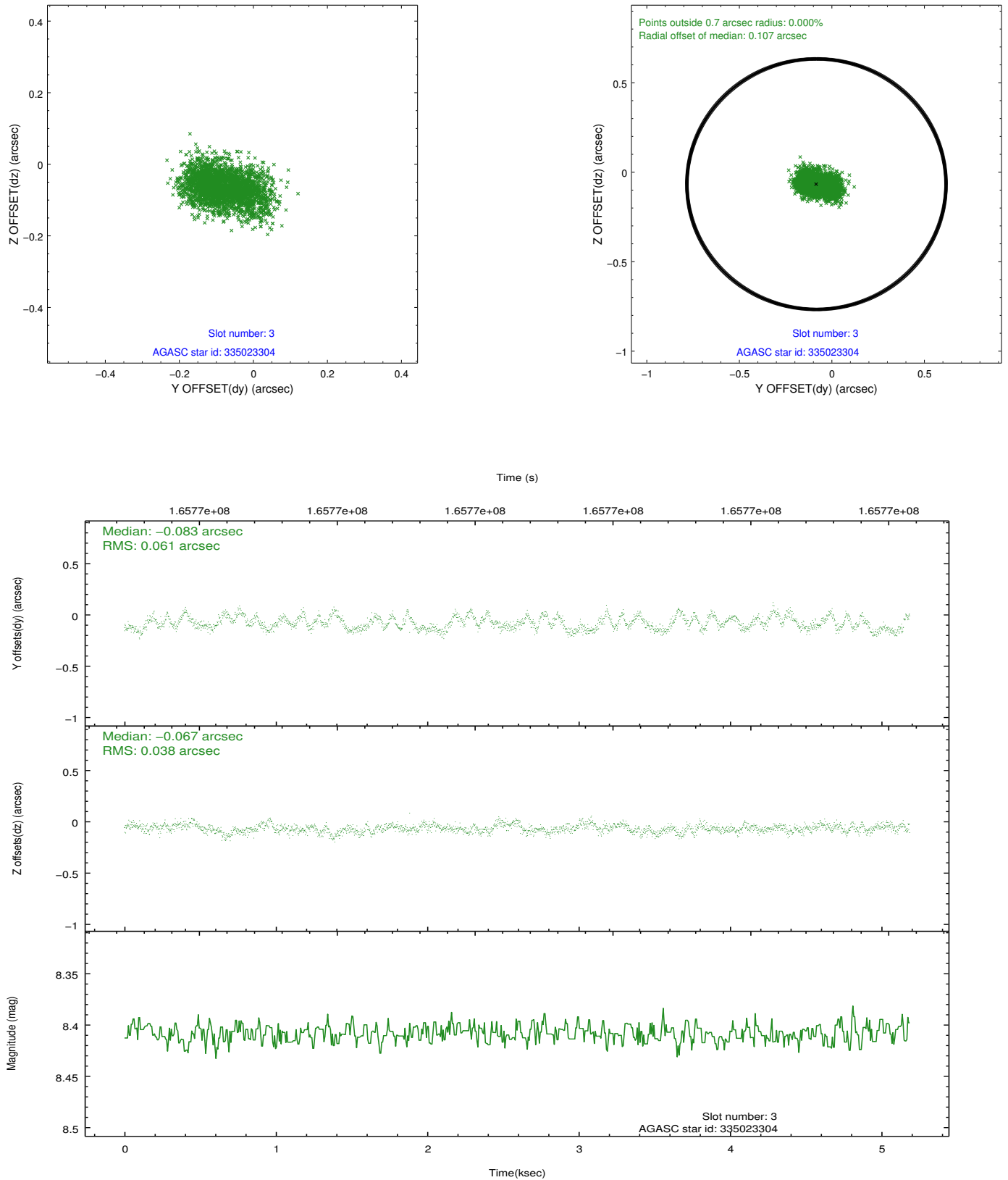


Slot Statistics

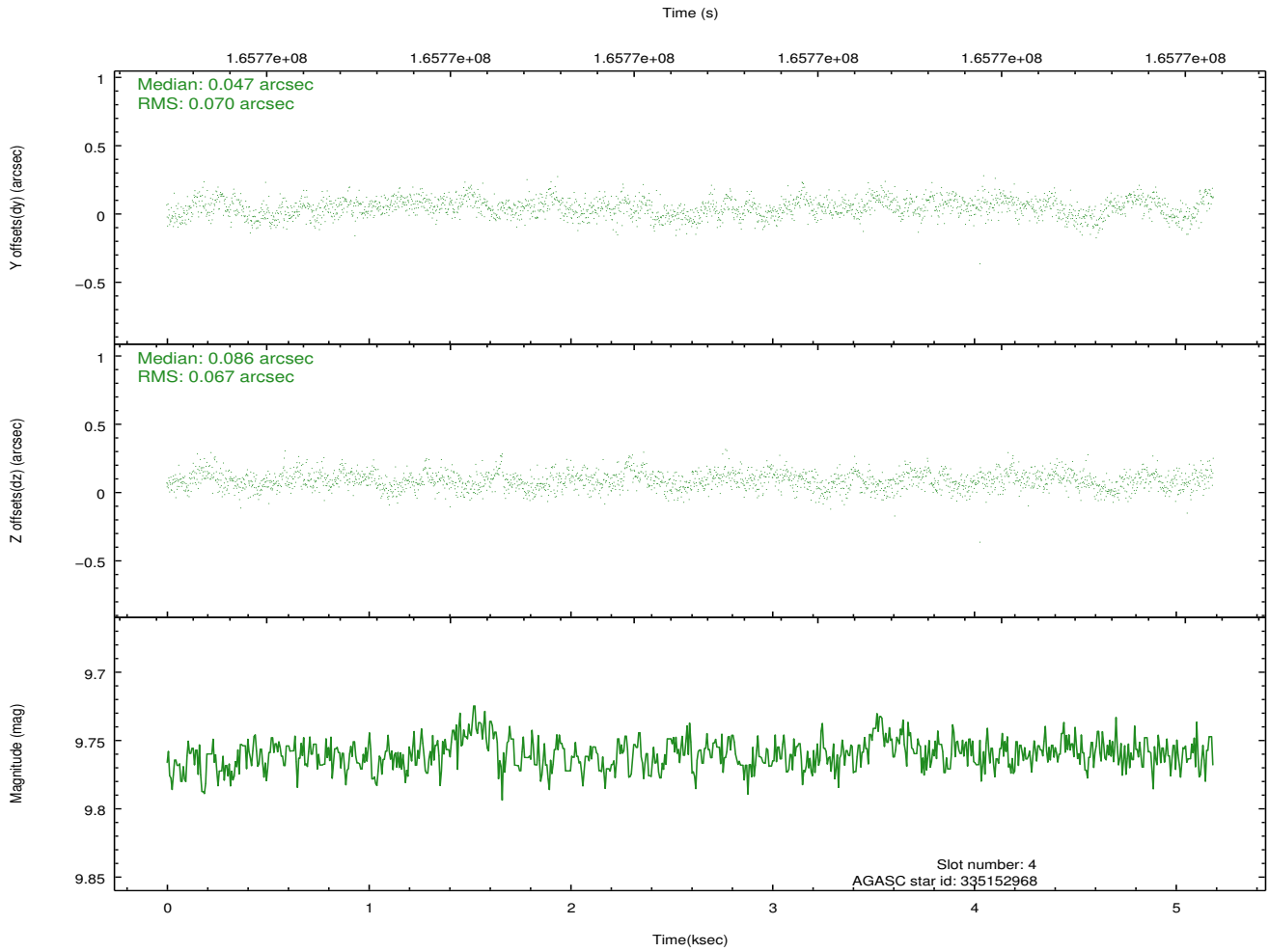
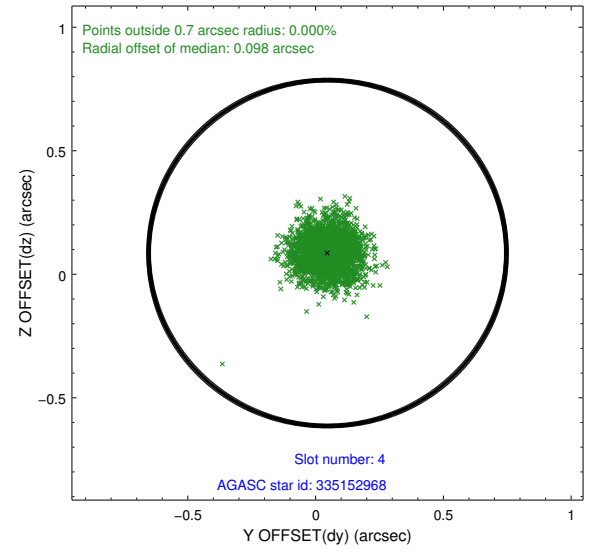
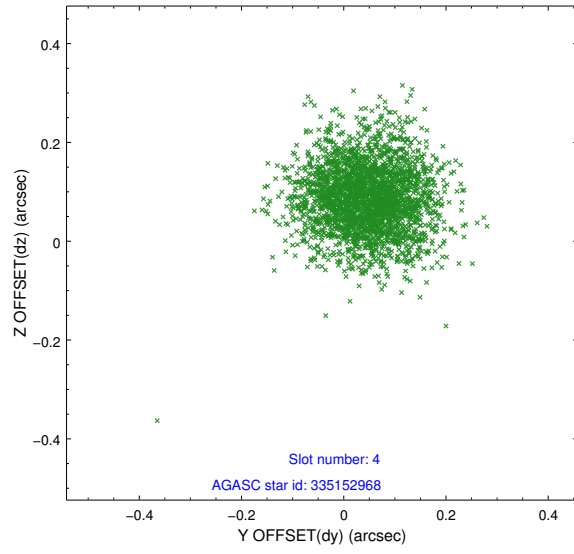
slot	status	id	mag	n_pts	med_dy	med_dz	dr1	dr2	ra	dec	mean_y	mean_z
0	FID	ACIS-I-1	7.25	1265	0.015	-0.007	0.006	0.011	0.000000	0.000000	937.37	-830.09
1	FID	ACIS-I-5	7.24	1266	-0.083	0.054	0.006	0.011	0.000000	0.000000	-1810.15	1066.94
2	FID	ACIS-I-6	7.26	1265	-0.024	0.024	0.006	0.011	0.000000	0.000000	401.66	1712.69
3	GUIDE	335023304	8.41	2528	-0.083	-0.067	0.077	0.124	218.883608	34.686545	-1314.81	784.52
4	GUIDE	335152968	9.76	2529	0.047	0.086	0.102	0.166	219.446087	34.867883	-2183.98	-776.39
5	GUIDE	335414336	8.96	2527	-0.051	0.115	0.080	0.132	218.979022	35.090910	-610.56	-519.99
6	GUIDE	335023248	8.94	2531	-0.007	0.023	0.075	0.114	217.634832	34.944512	2138.94	2383.22
7	GUIDE	335025040	9.93	2530	0.099	-0.161	0.171	0.265	218.601670	34.305240	-1534.28	2377.72

2.4 Star Slots

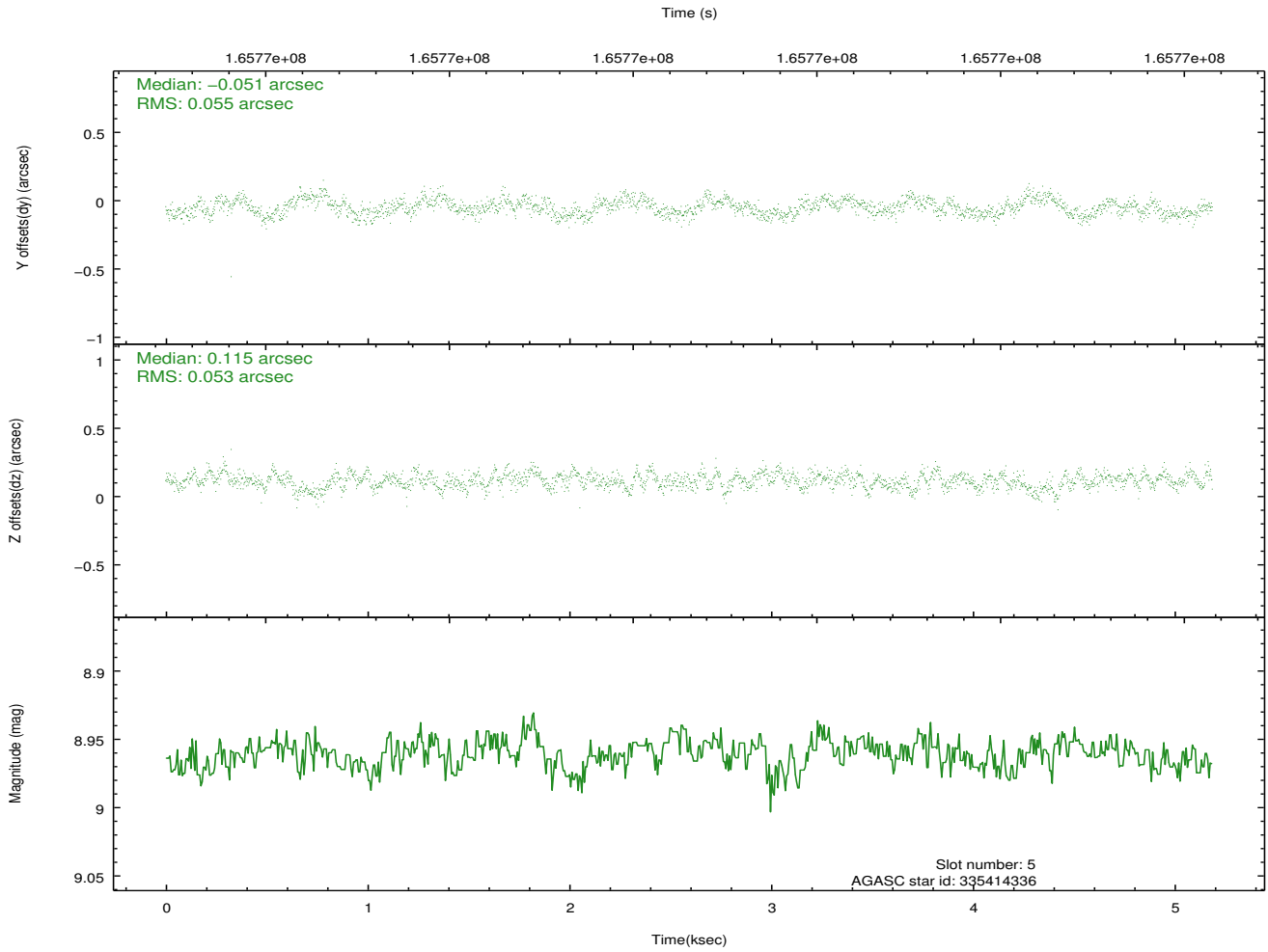
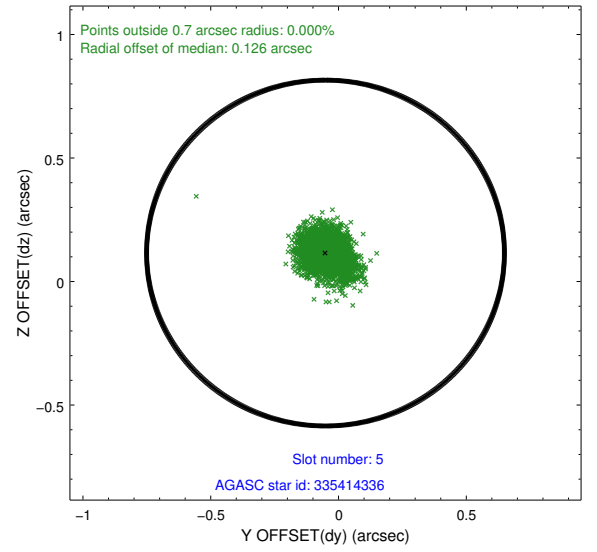
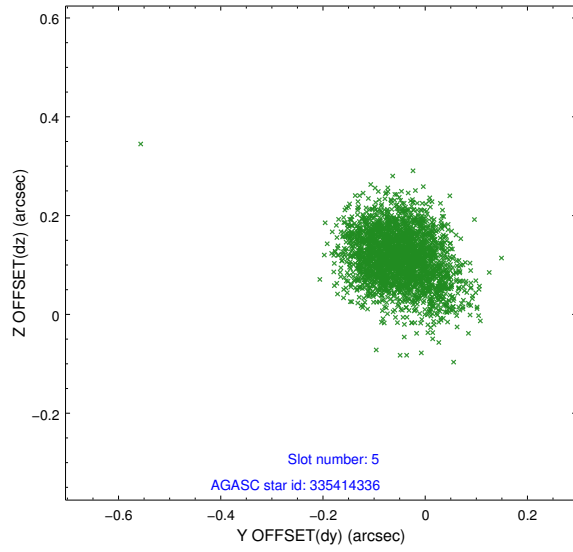
2.4.1 Slot 3



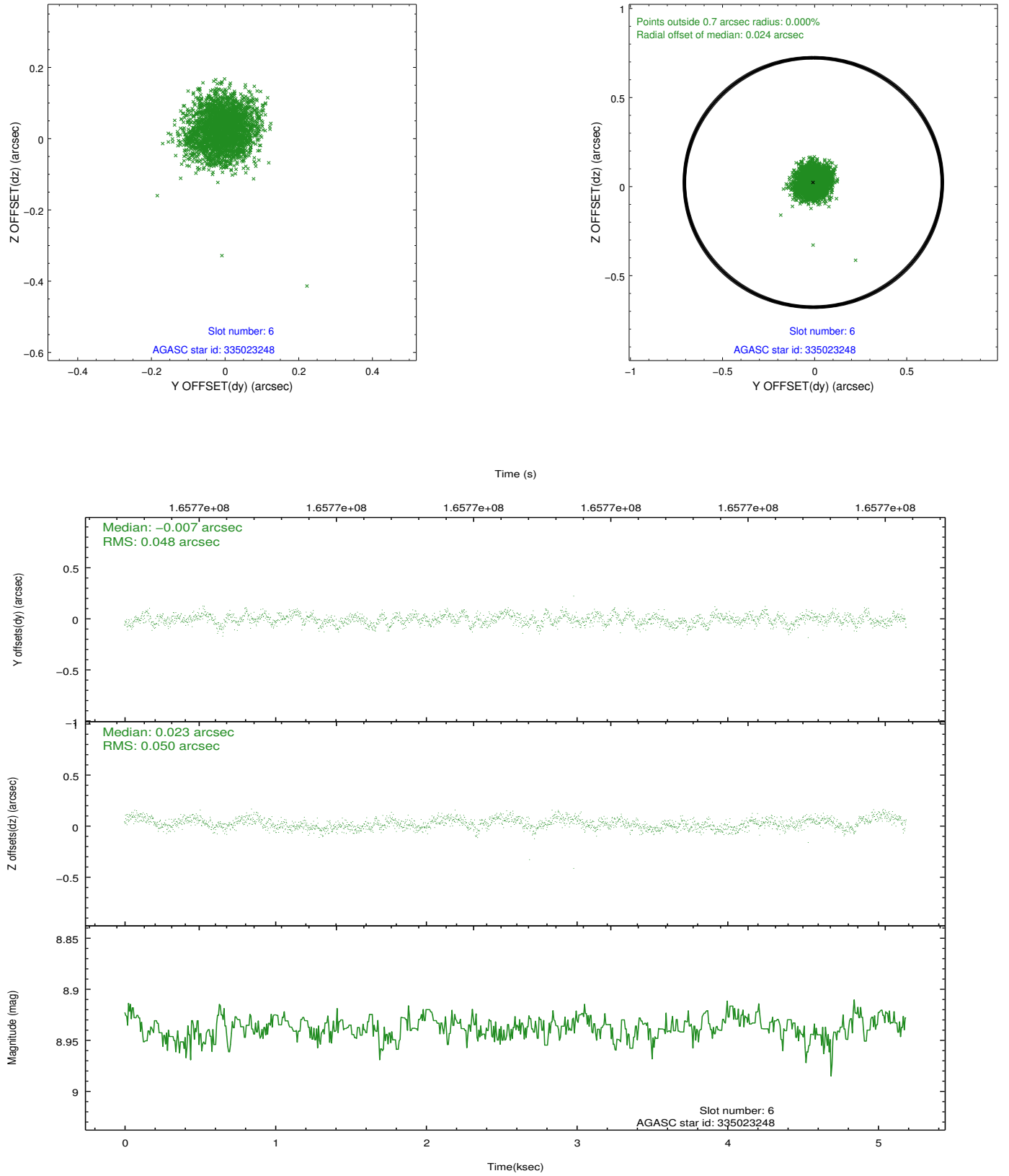
2.4.2 Slot 4



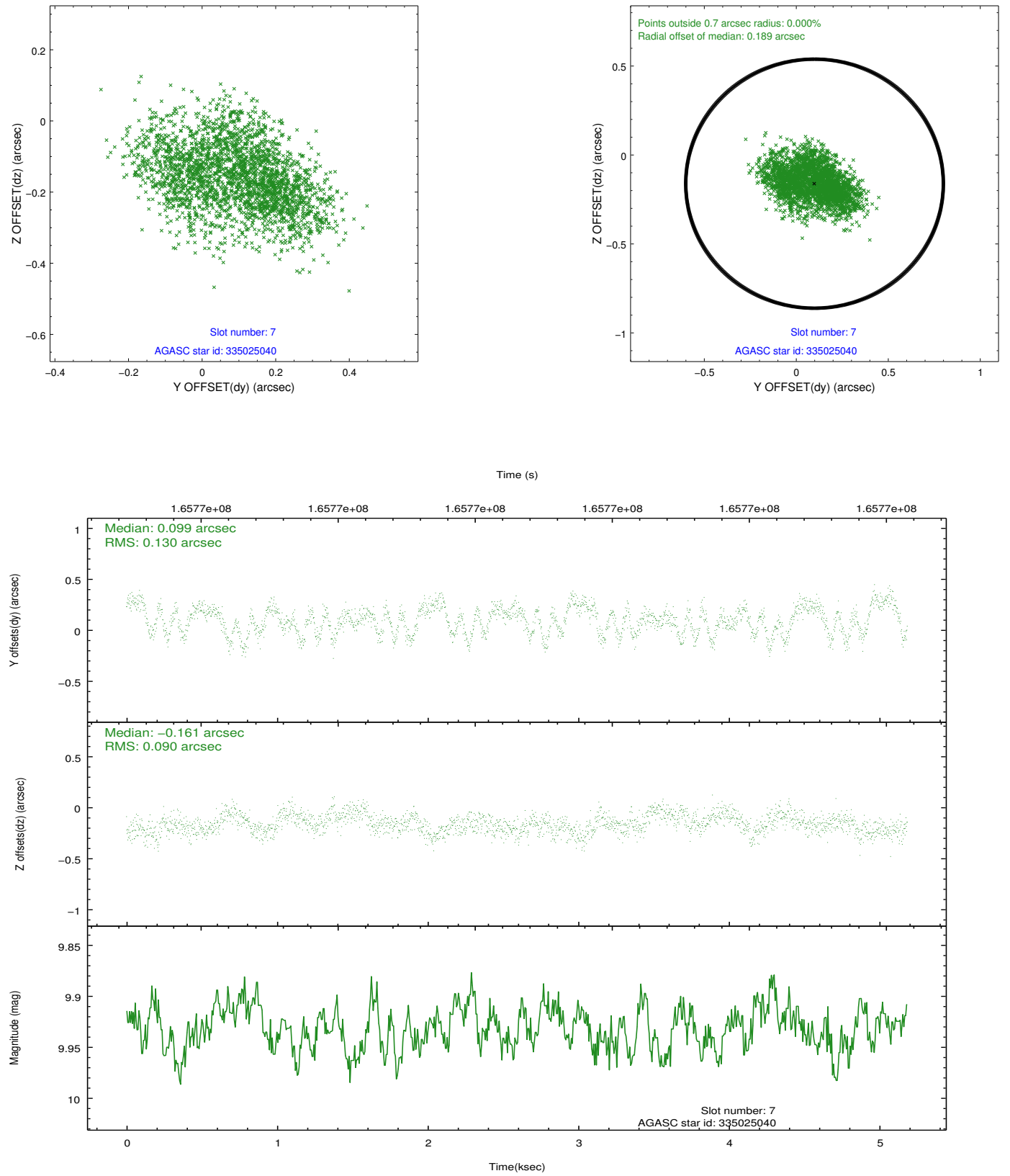
2.4.3 Slot 5



2.4.4 Slot 6

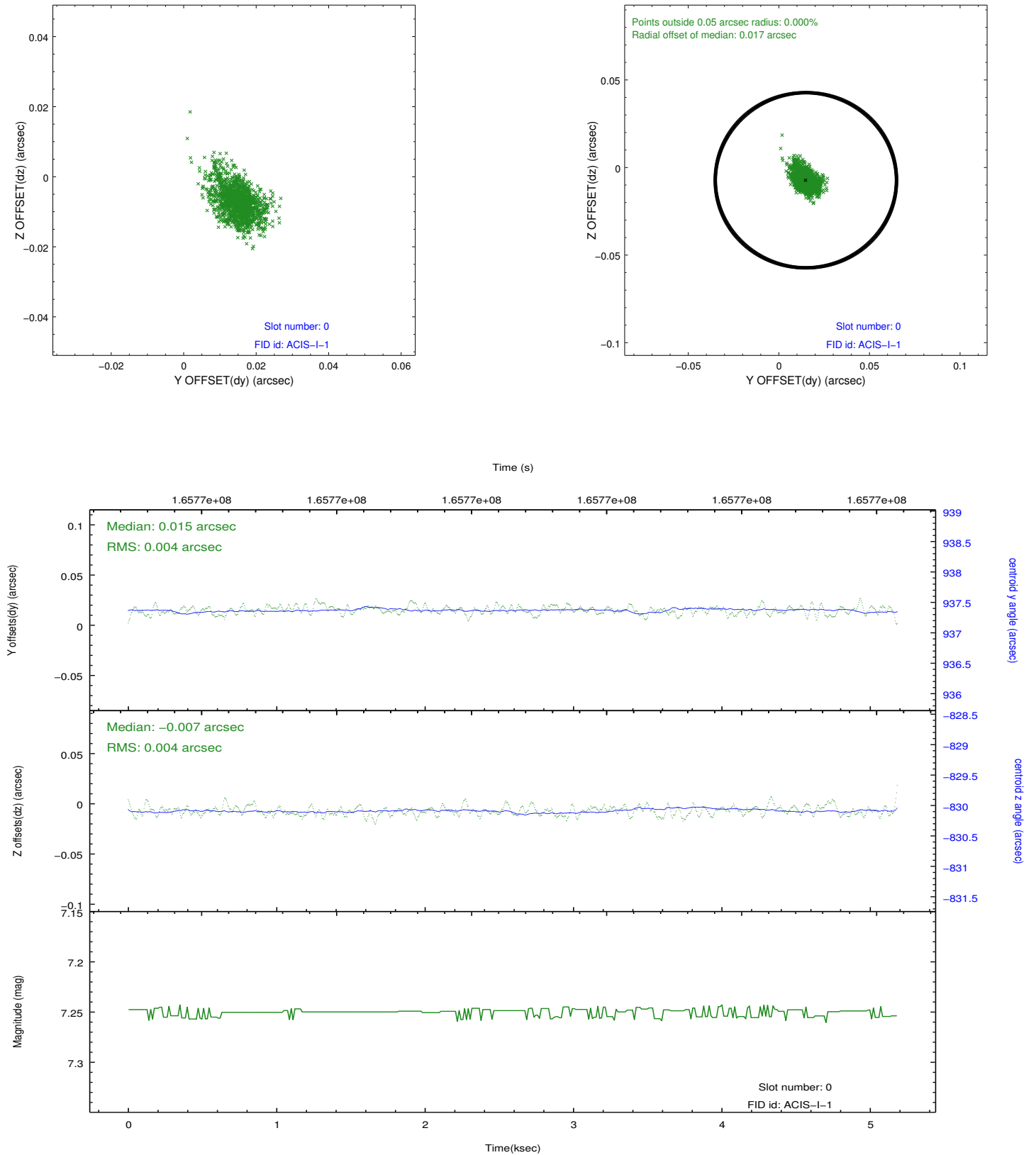


2.4.5 Slot 7

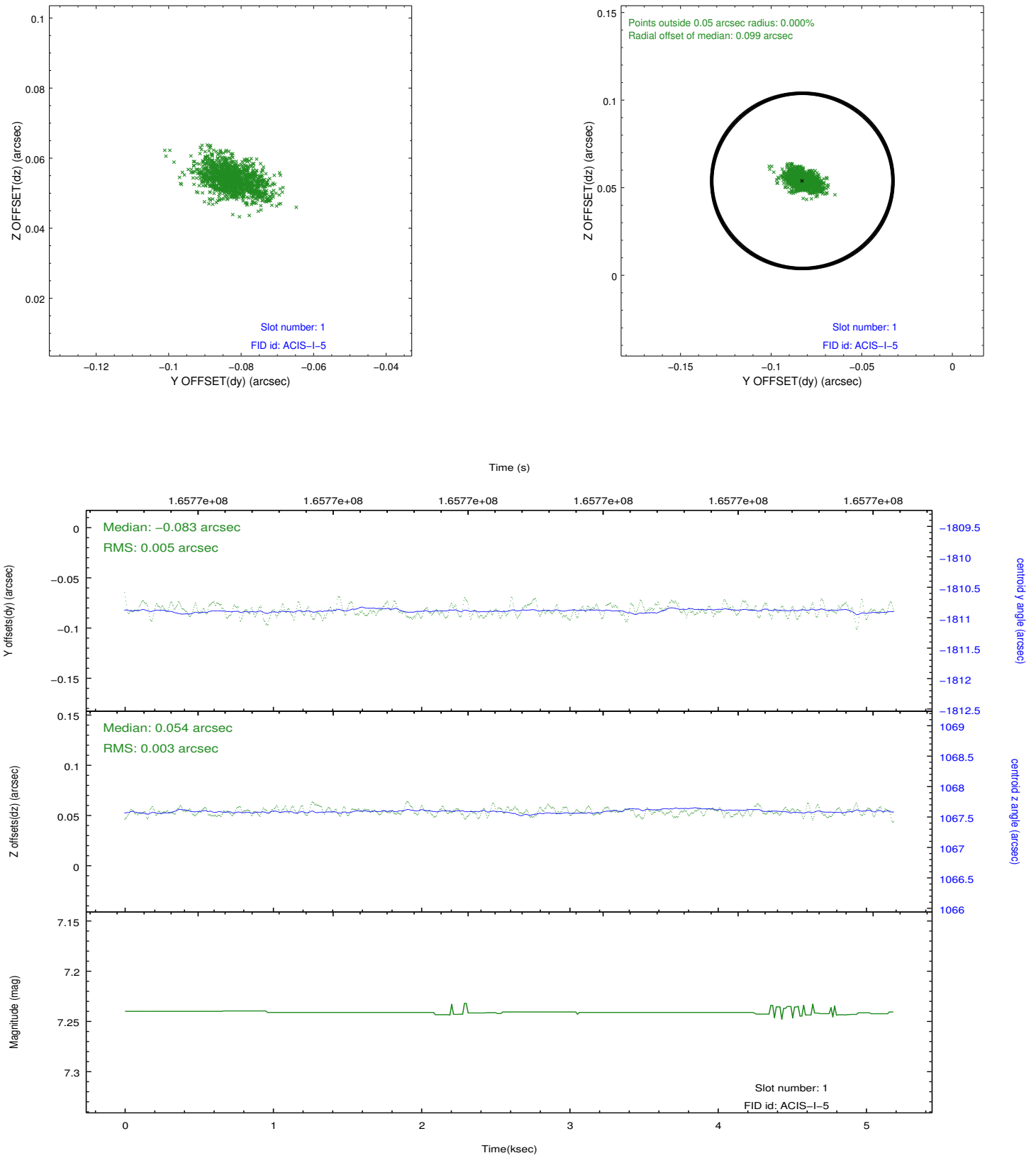


2.5 FID Slots

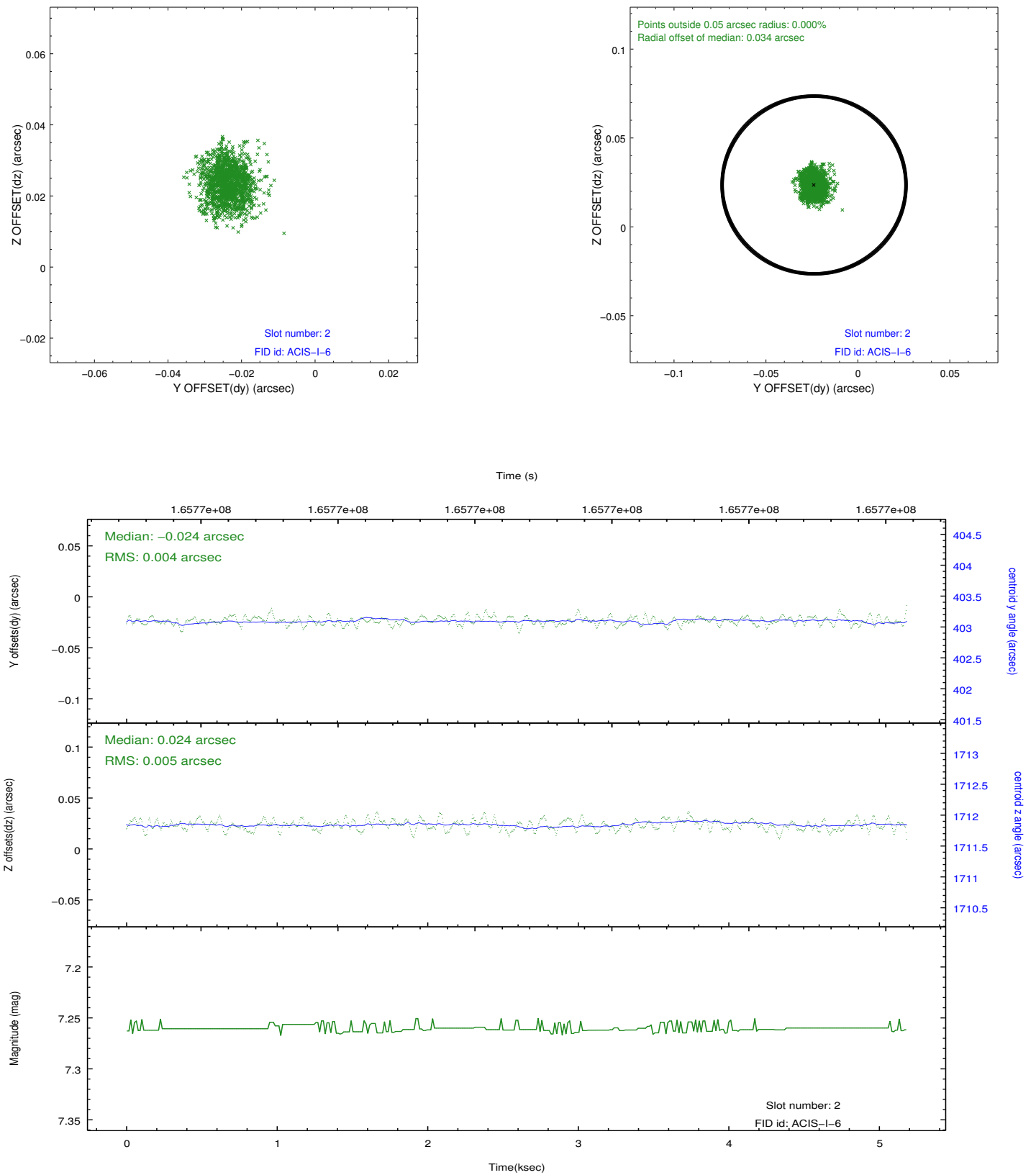
2.5.1 Slot 0



2.5.2 Slot 1



2.5.3 Slot 2



A Summary

A.1 Status

V&V Scientist	Jen Lauer
V&V Date (YYYY-MM-DD)	2012.11.13
V&V Edition	1
V&V Disposition and Status	OK
V&V Charge Time	4.777

A.2 Comments