

V&V Reference Report

L2 ASCDS Version : 7.6.8

Observation 3621 - L2 Version 001
Chandra X-Ray Center

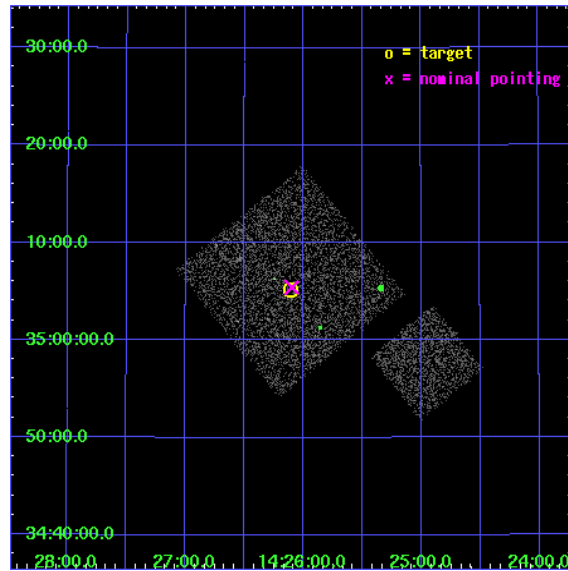
L2 Processing Date : Jul 29 2006

Contents

1	Front	2
2	OBI	3
2.1	OBI	3
2.1.1	Images	3
2.1.2	Bias	3
2.1.3	Parameters	4
2.1.4	Events	4
2.2	Compared Parameters	5
2.3	Aspect	6
2.4	Star Slots	9
2.4.1	Slot 3	9
2.4.2	Slot 4	10
2.4.3	Slot 5	11
2.4.4	Slot 6	12
2.4.5	Slot 7	13
2.5	FID Slots	14
2.5.1	Slot 0	14
2.5.2	Slot 1	15
2.5.3	Slot 2	16
3	Point Sources	17
A	Summary	18
A.1	Status	18
A.2	Comments	18

1 Front

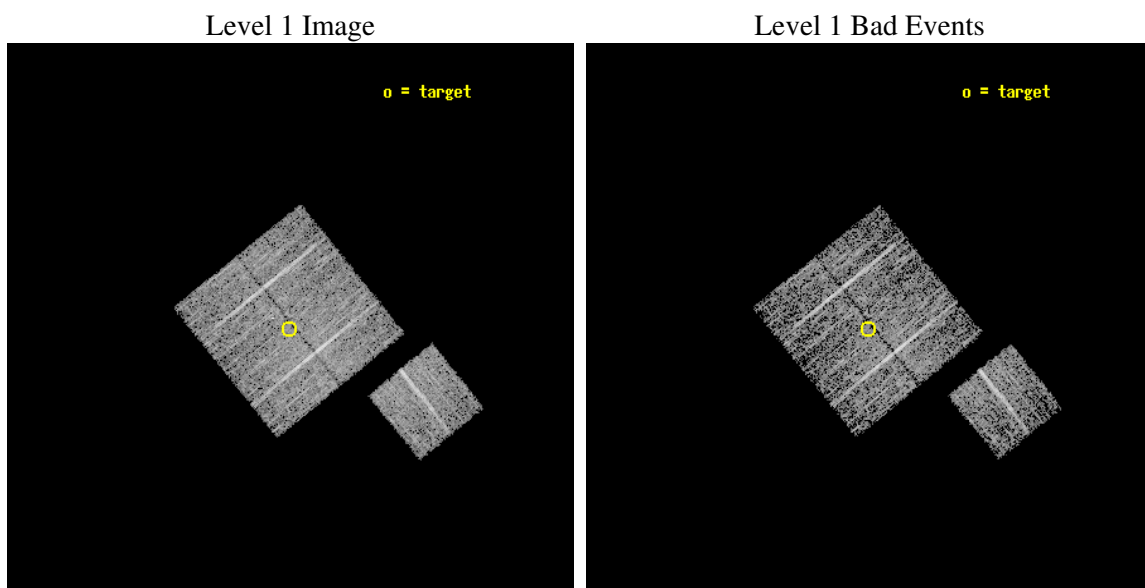
seq_num	900221
obs_id	3621
title	CHANDRA LARGE SCALE SURVEY OF THE NOAO BOOTES DEEP FIELD
observer	Dr. Stephen Murray
object	NOAO FIELD F38
dtcycle	0
cycle	P
ra_targ	216.527246
dec_targ	35.08647
ra_nom	216.52451272675
dec_nom	35.090484433459
roll_nom	141.01030236296
revision	2
ontime	4777.0999908149
livetime	4714.6836625851
ontime0	4777.0999908149
ontime1	4777.0999908149
ontime2	4777.0999908149
ontime3	4777.0999908149
ontime6	4777.0999908149
l2events	9723



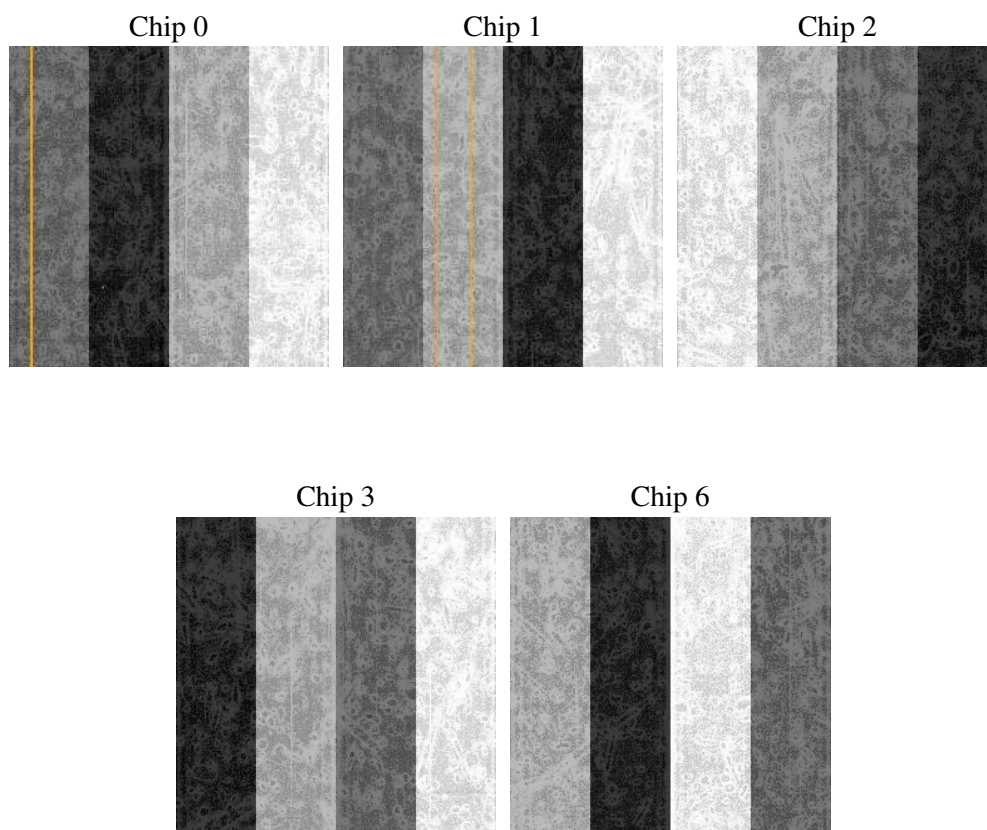
2 OBI

2.1 OBI

2.1.1 Images



2.1.2 Bias



2.1.3 Parameters

obi_num	0
ascdsver	7.6.8
caldbver	3.2.2
date	2006-07-29T16:34:57
revision	2

sched_exp_time	5000.000000
ontime	4780.6221613586
ontime0	4780.6221414506
ontime1	4780.6221414506
ontime2	4780.6221414506
ontime3	4780.6221613586
ontime6	4780.6221613586
l1events	119183

2.1.4 Events

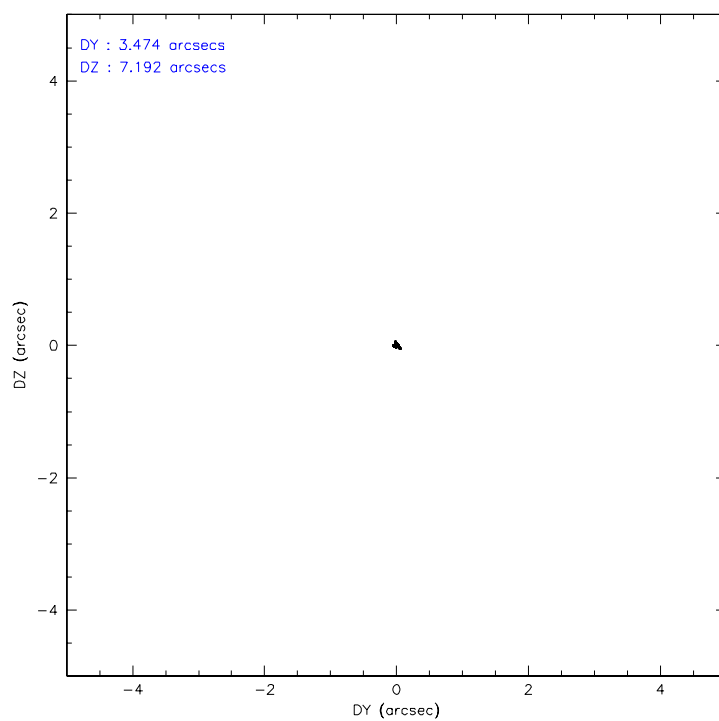
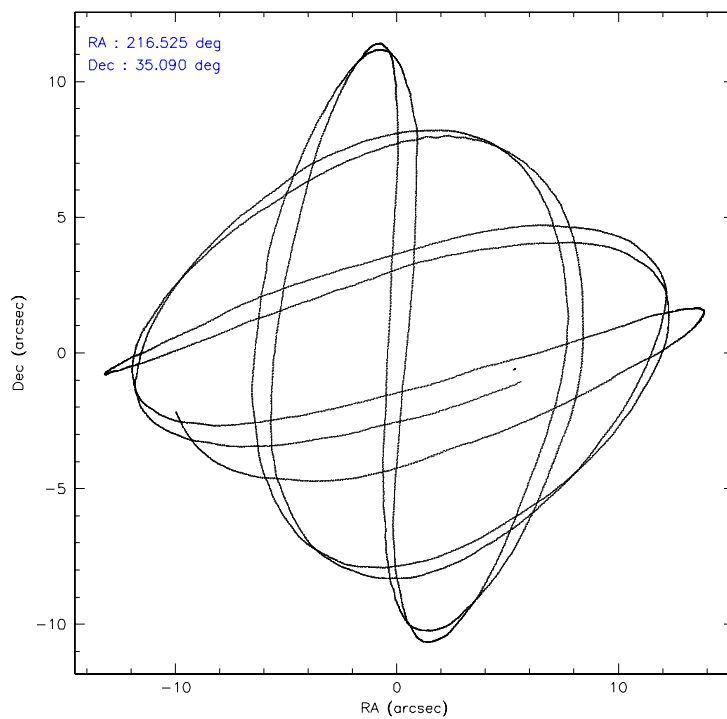
	ccd 0	ccd 1	ccd 2	ccd 3	ccd 6
level 1 events	22309	22519	24997	24824	24534
rejected events	19893	19835	22742	22604	22061
rejected %	89%	88%	90%	91%	89%

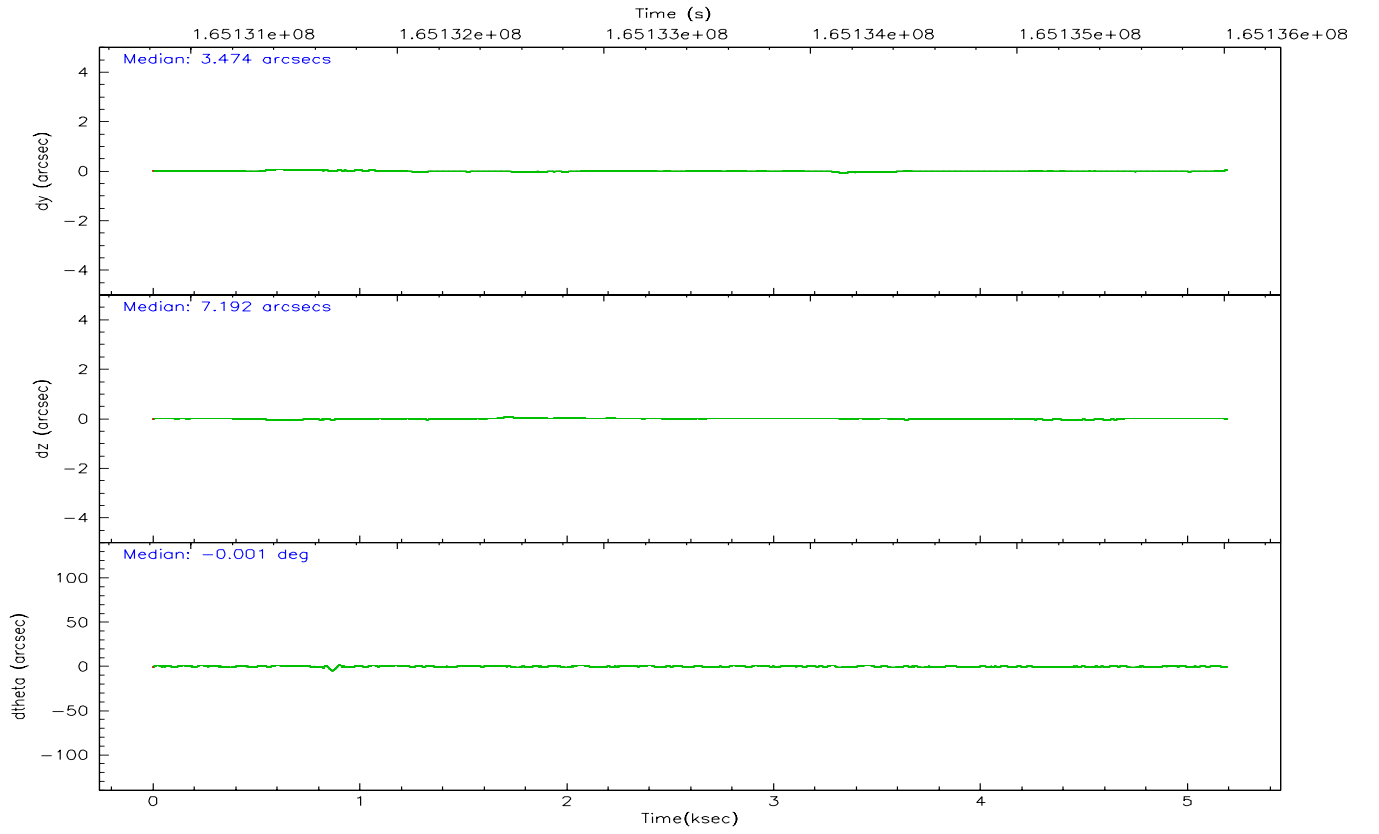
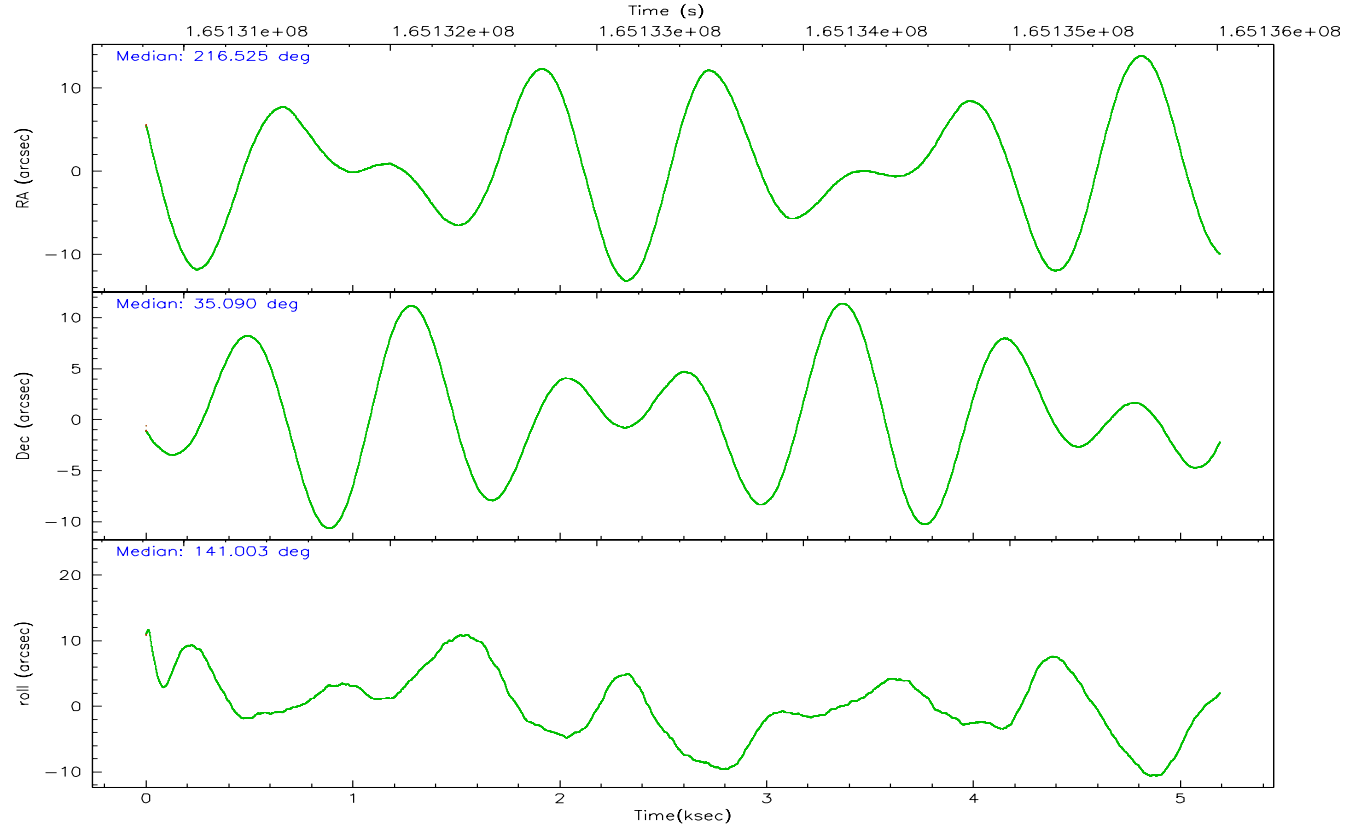
	ccd 0	ccd 1	ccd 2	ccd 3	ccd 6
grade 0 events	867	1012	865	839	887
	3%	4%	3%	3%	3%
grade 1 events	17	10	10	19	12
	0%	0%	0%	0%	0%
grade 2 events	545	559	504	434	521
	2%	2%	2%	1%	2%
grade 3 events	311	310	242	280	287
	1%	1%	0%	1%	1%
grade 4 events	277	322	268	295	282
	1%	1%	1%	1%	1%
grade 5 events	703	744	648	803	745
	3%	3%	2%	3%	3%
grade 6 events	418	483	377	374	496
	1%	2%	1%	1%	2%
grade 7 events	19171	19079	22083	21780	21304
	85%	84%	88%	87%	86%

2.2 Compared Parameters

Parameter	Planned	Actual	Parameter	Planned	Actual
Instrument	ACIS	ACIS	Obspar format version number	6	6
Detector	ACIS-01236	ACIS-01236	Obspar file type	PREDICTED	ACTUAL
Grating	NONE	NONE	Obspar update status	NONE	UPDATED
Data mode	VFAINT	VFAINT	On-chip summing requested	N	N
Observation mode	POINTING	POINTING	Subarray requested	NONE	NONE
Pointing RA	216.557660	216.5245127267546	Alternating exposures requested	N	N
Pointing Dec	35.086385	35.09048443345874	Primary exposure time	0.000000	3.1
Pointing Roll	140.782520	141.0103023629586			
SIM focus pos (mm)	-0.782348	-0.7809083437167272			
SIM defocus (mm)	0	0.001439871863259334			
SIM translation stage pos (mm)	-233.592463	-233.5874344608287			
SIM translation stage offset (mm)	0	-0.005018542100998502			
Observation start time	165131009.184000	165130633.38898			
Observation start date	2003-03-27T05:42:25	2003-03-27T05:37:13			
Observation end time	165136009.184000	165136143.78922			
Observation end date	2003-03-27T07:05:45	2003-03-27T07:09:03			
Read mode	TIMED	TIMED			

2.3 Aspect



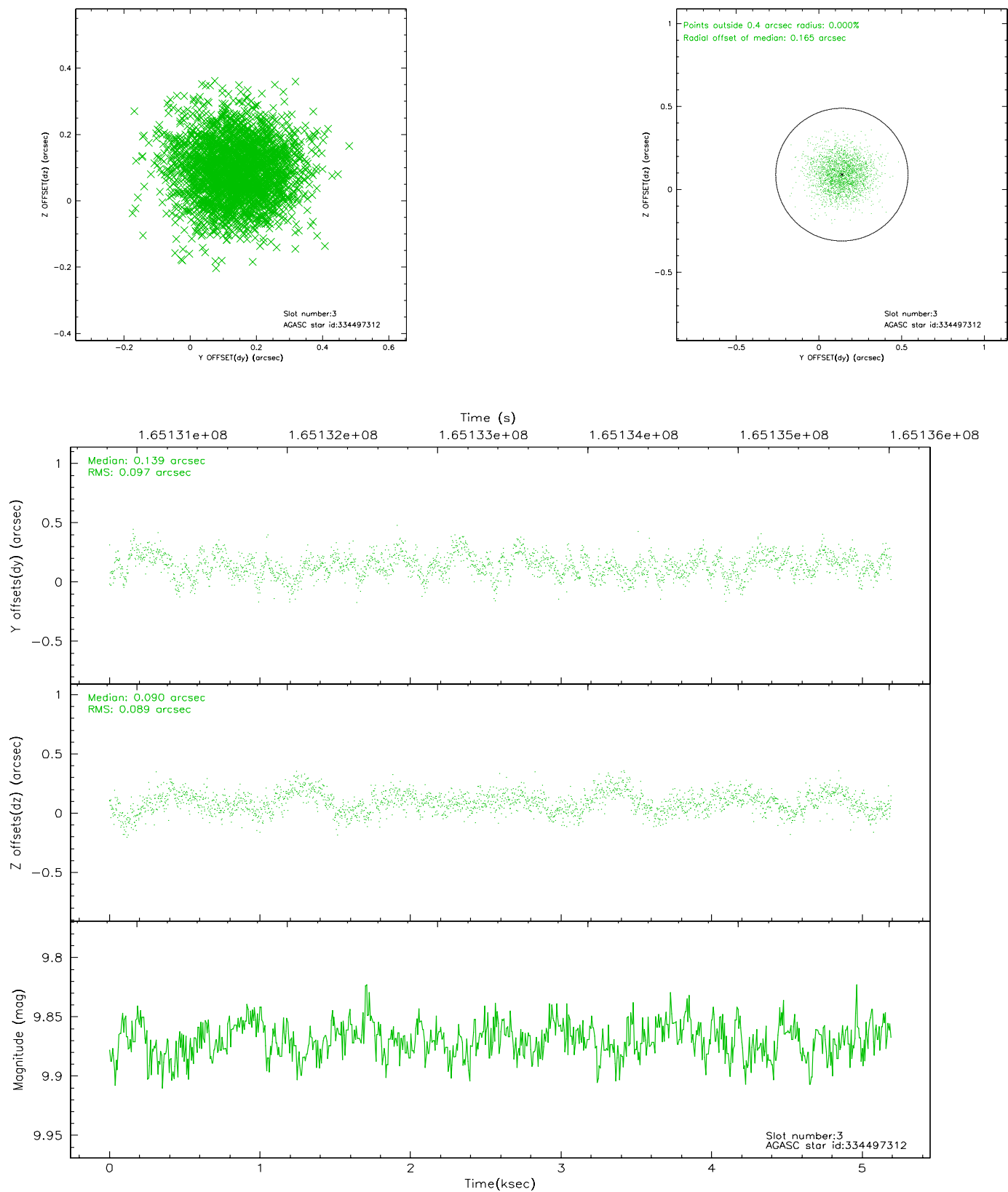


Slot Statistics

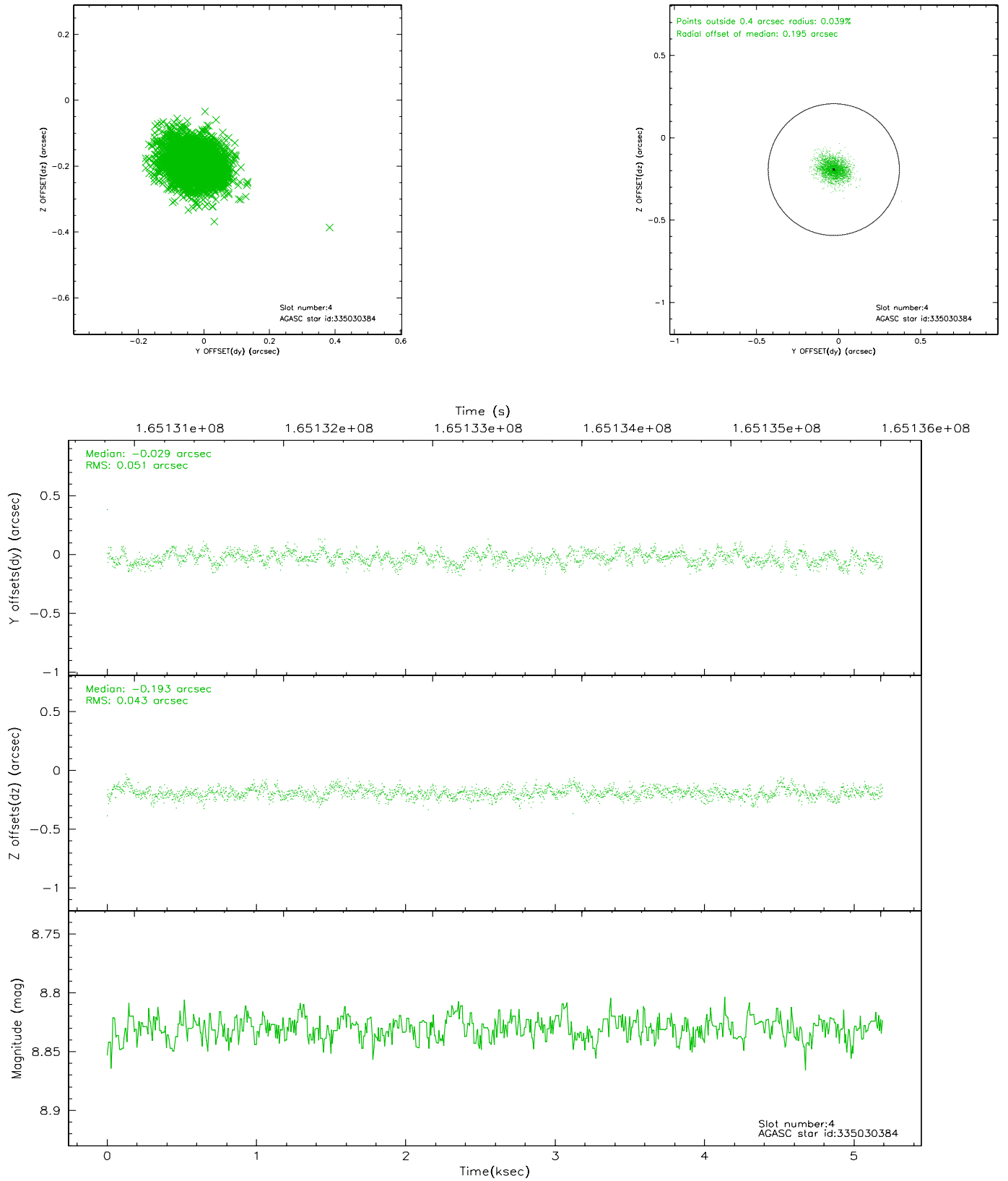
slot	status	id	mag	n_pts	med_dy	med_dz	dr1	dr2	ra	dec	mean_y	mean_z
0	FID	ACIS-I-1	7.25	1267	-0.000	0.042	0.006	0.010	0.000000	0.000000	936.29	-830.56
1	FID	ACIS-I-5	7.24	1266	-0.063	0.054	0.006	0.010	0.000000	0.000000	-1811.20	1066.40
2	FID	ACIS-I-6	7.26	1266	-0.028	-0.025	0.007	0.012	0.000000	0.000000	400.59	1712.11
3	GUIDE	334497312	9.87	2529	0.139	0.090	0.141	0.226	215.482164	35.047592	2378.36	2099.47
4	GUIDE	335030384	8.83	2532	-0.029	-0.193	0.071	0.115	216.806407	34.722197	-1397.54	550.10
5	GUIDE	335414448	7.37	2534	-0.181	-0.002	0.073	0.111	216.992261	35.577204	132.50	-2175.41
6	GUIDE	335417968	9.39	2534	0.087	0.027	0.082	0.133	217.358149	35.055285	-1891.89	-1413.27
7	GUIDE	335419120	9.66	2532	-0.017	0.078	0.091	0.151	216.521861	35.833546	1781.42	-2018.21

2.4 Star Slots

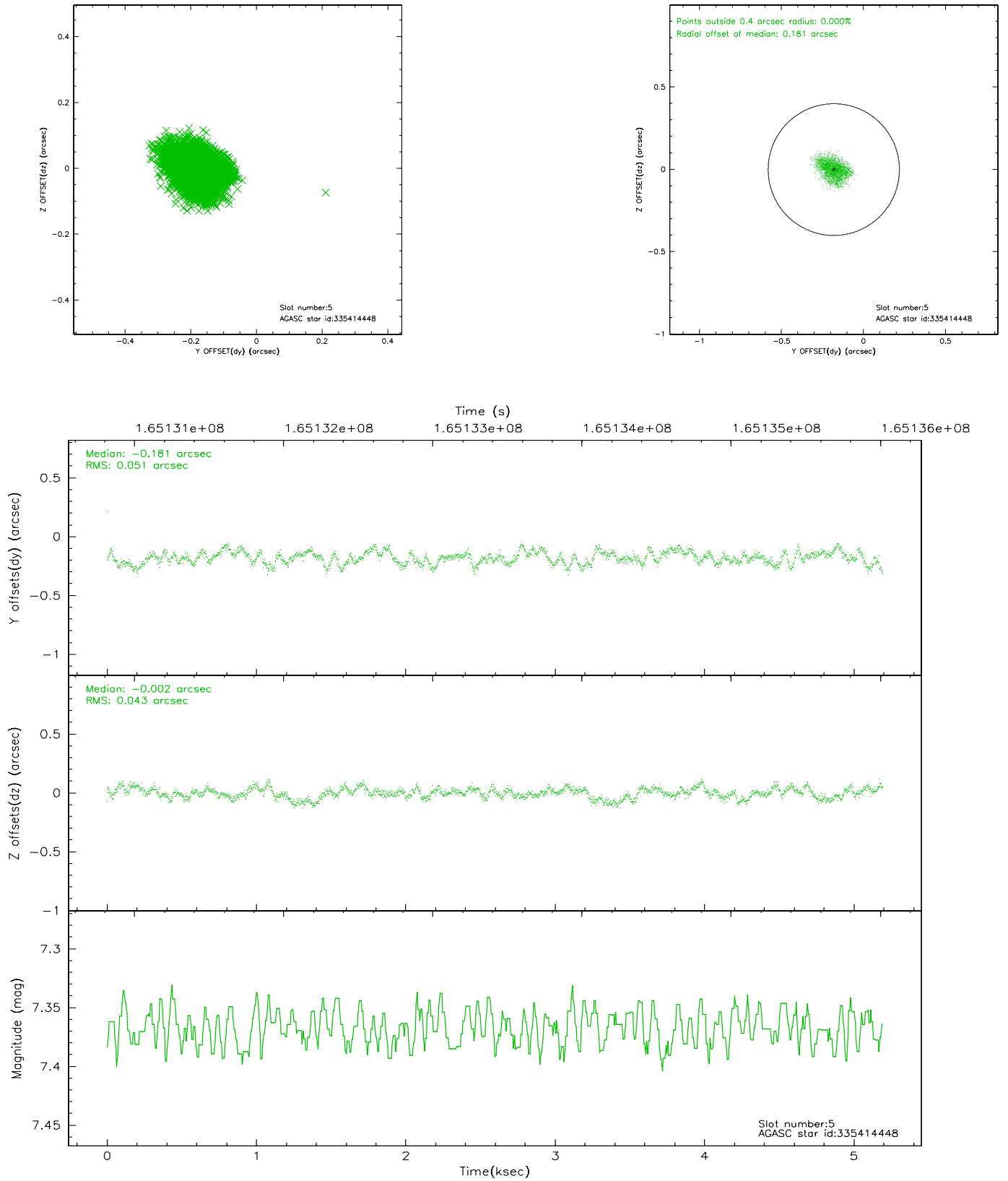
2.4.1 Slot 3



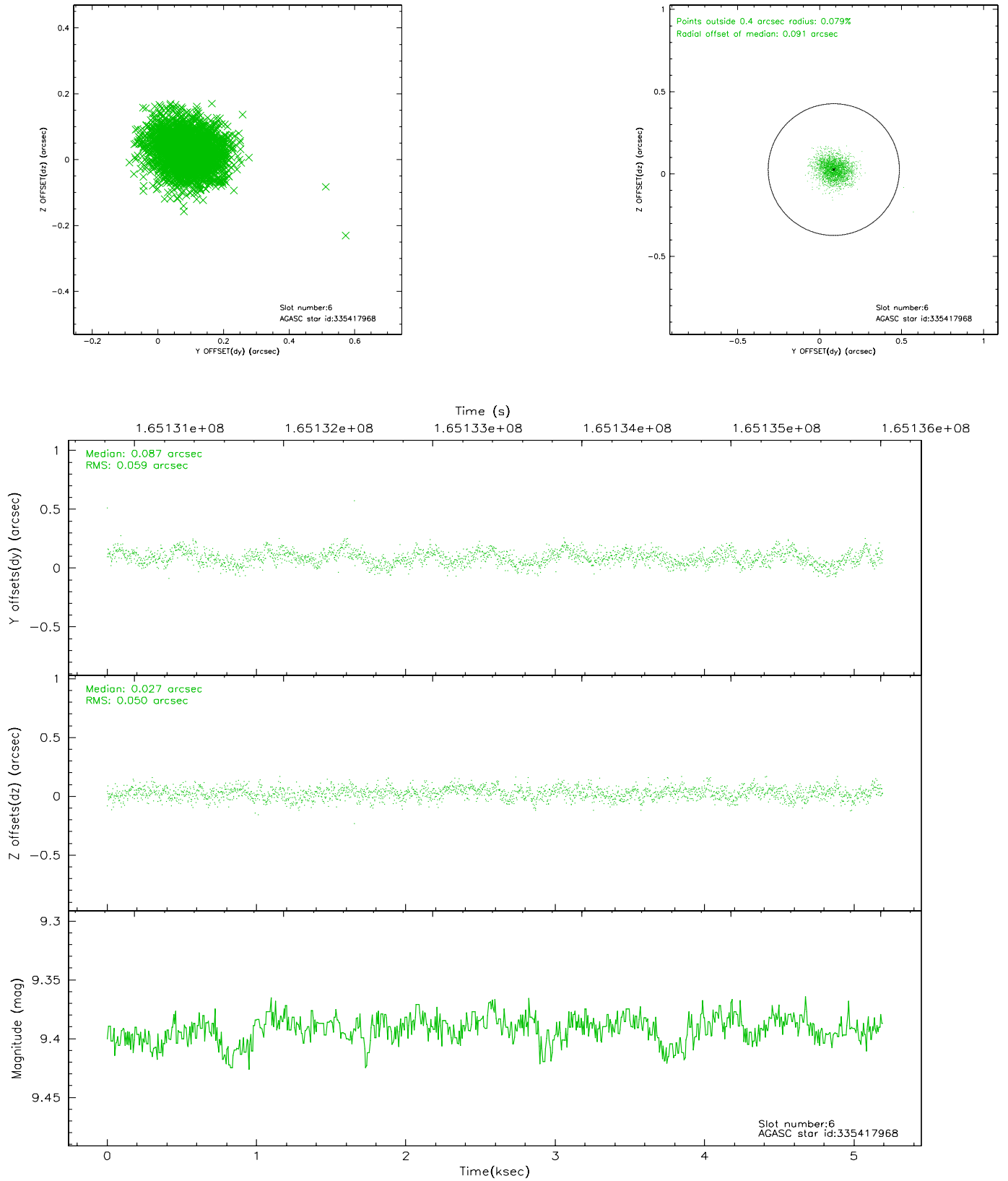
2.4.2 Slot 4



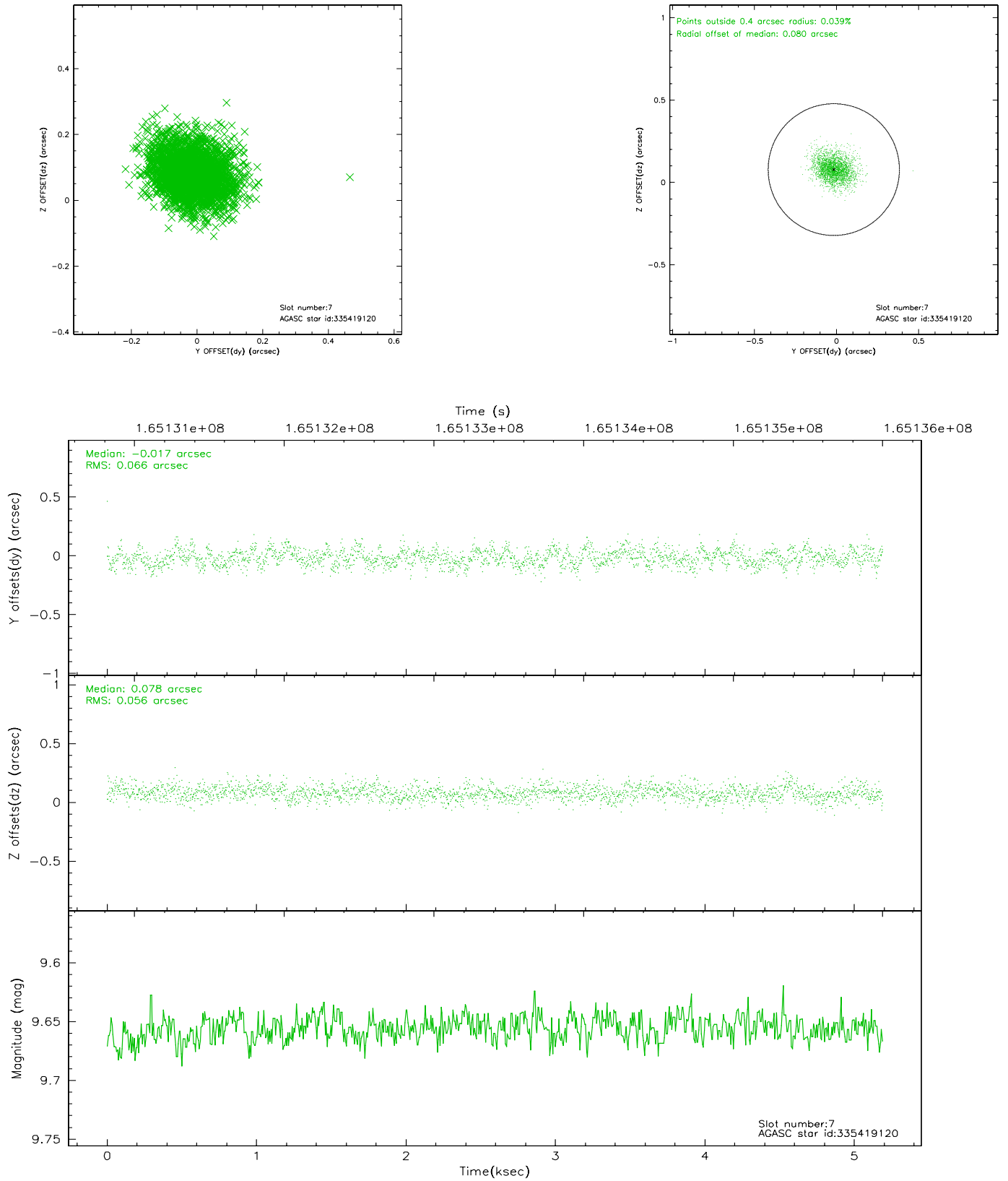
2.4.3 Slot 5



2.4.4 Slot 6

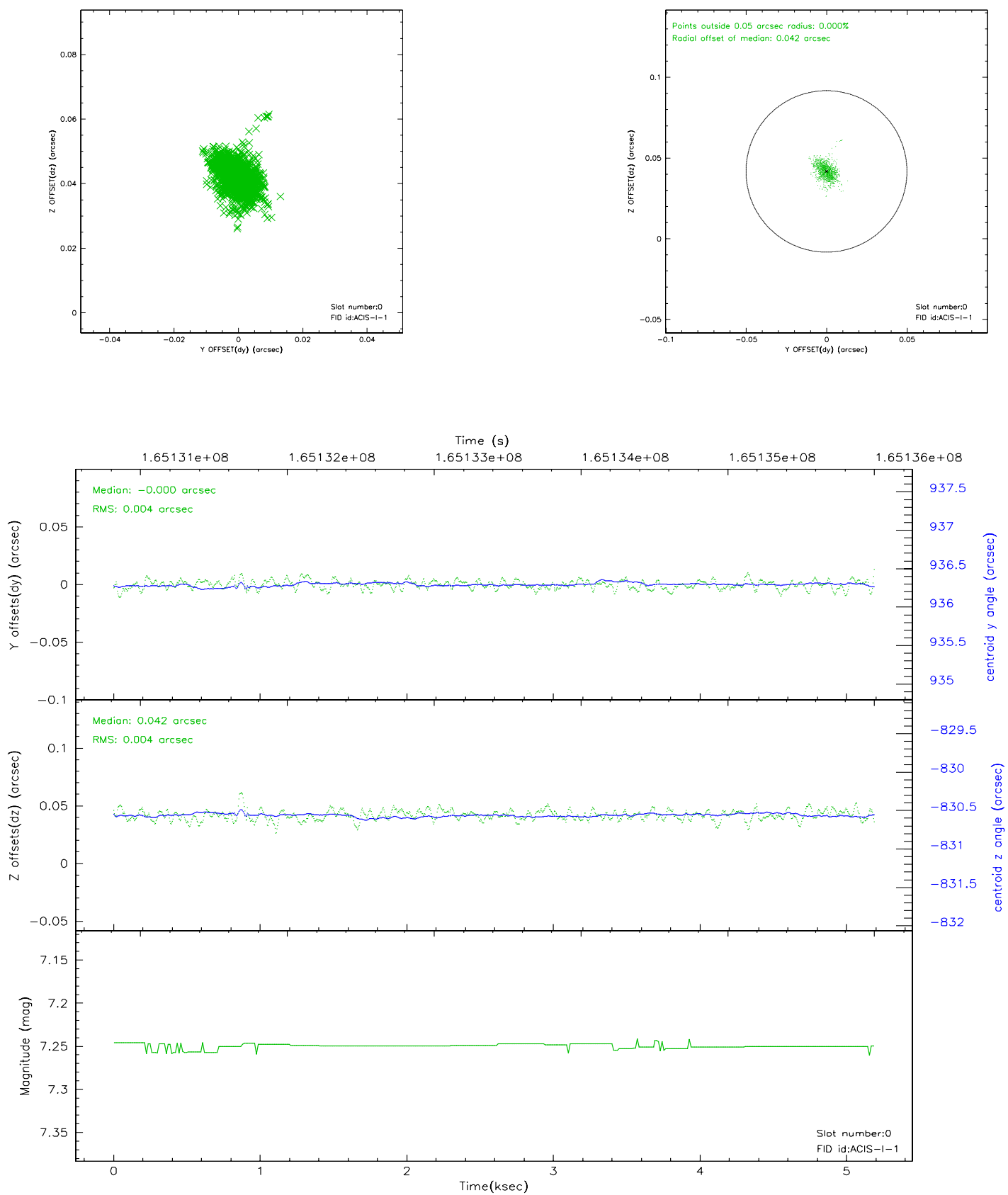


2.4.5 Slot 7

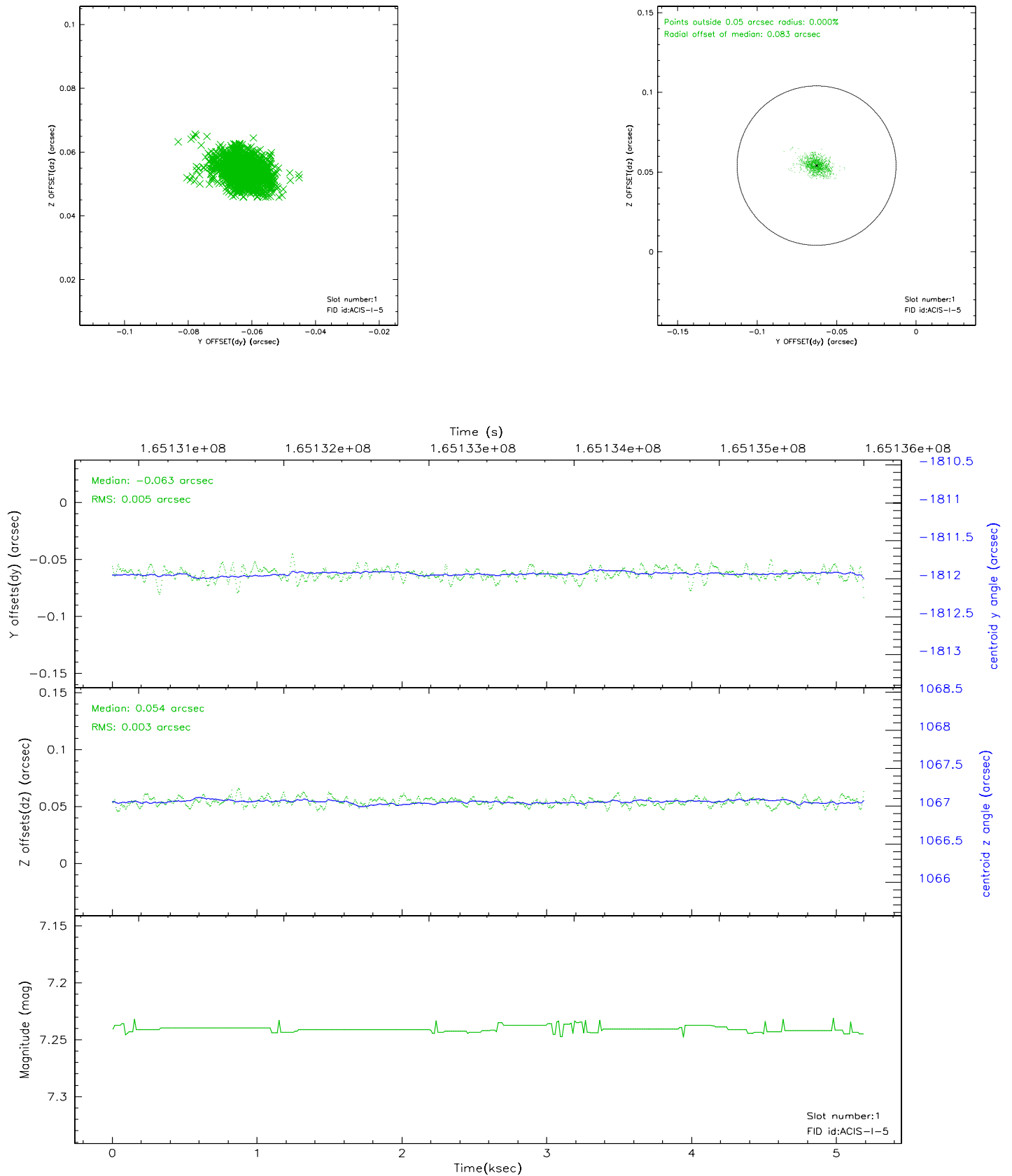


2.5 FID Slots

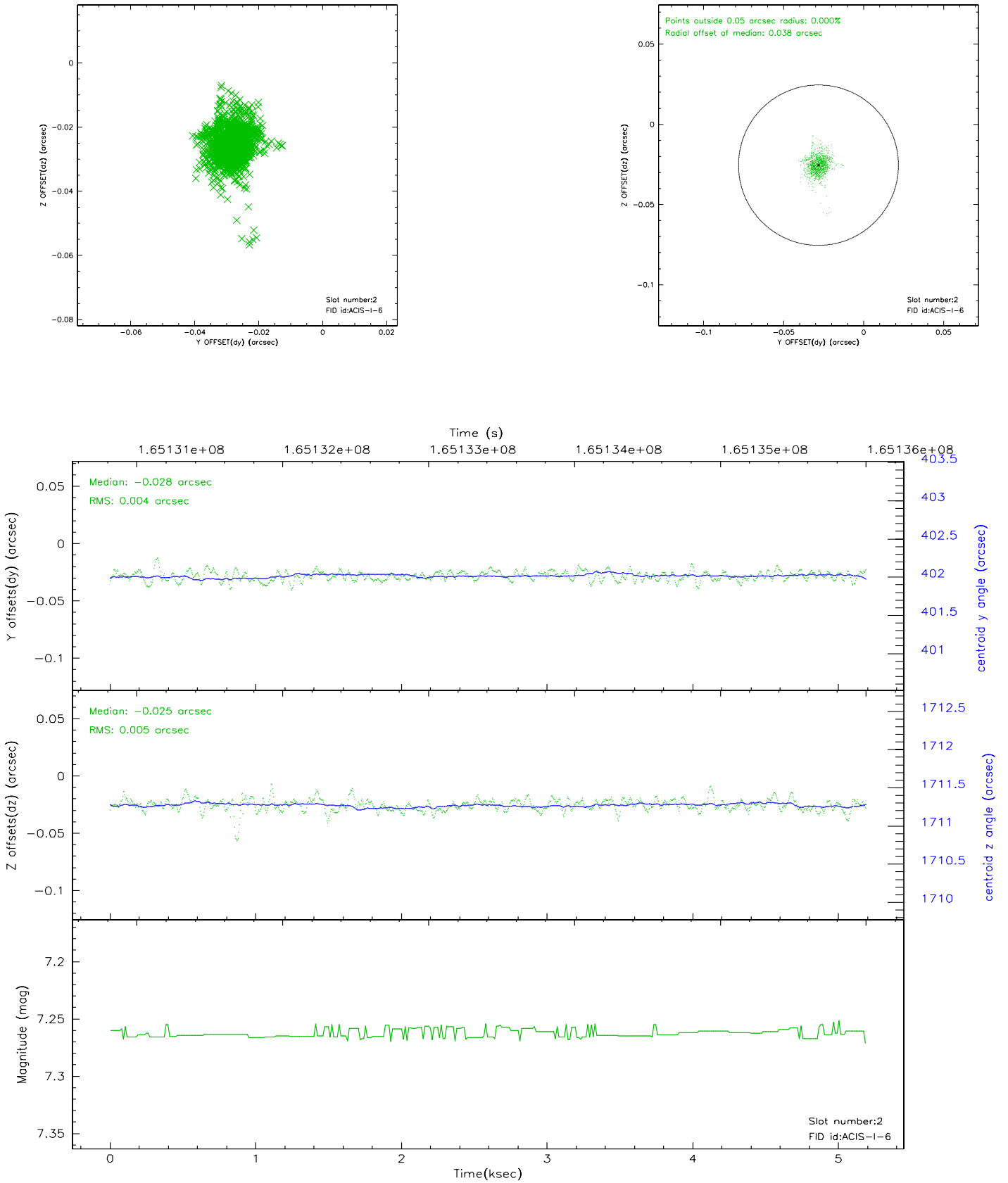
2.5.1 Slot 0



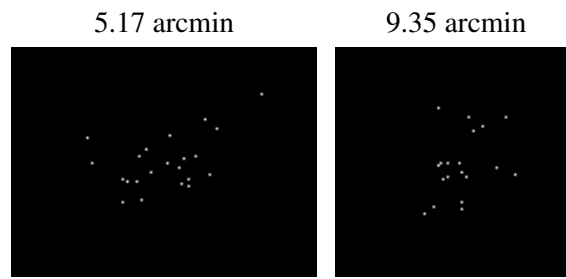
2.5.2 Slot 1



2.5.3 Slot 2



3 Point Sources



A Summary

A.1 Status

V&V Scientist	Jen Lauer
V&V Date (YYYY-MM-DD)	2006.07.30
V&V Edition	1
V&V Disposition and Status	OK
V&V Charge Time	4.777

A.2 Comments