

V&V Reference Report

L2 ASCDS Version : 7.6.8

Observation 3619 - L2 Version 001
Chandra X-Ray Center

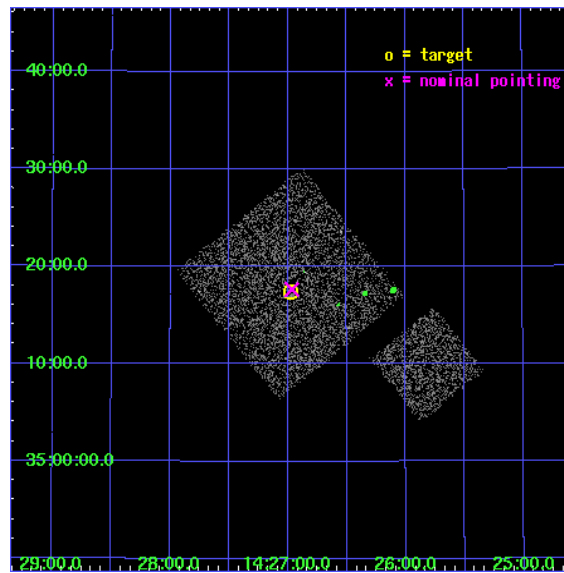
L2 Processing Date : Jul 29 2006

Contents

1	Front	2
2	OBI	3
2.1	OBI	3
2.1.1	Images	3
2.1.2	Bias	3
2.1.3	Parameters	4
2.1.4	Events	4
2.2	Compared Parameters	5
2.3	Aspect	6
2.4	Star Slots	9
2.4.1	Slot 3	9
2.4.2	Slot 4	10
2.4.3	Slot 5	11
2.4.4	Slot 6	12
2.4.5	Slot 7	13
2.5	FID Slots	14
2.5.1	Slot 0	14
2.5.2	Slot 1	15
2.5.3	Slot 2	16
3	Point Sources	17
A	Summary	18
A.1	Status	18
A.2	Comments	18

1 Front

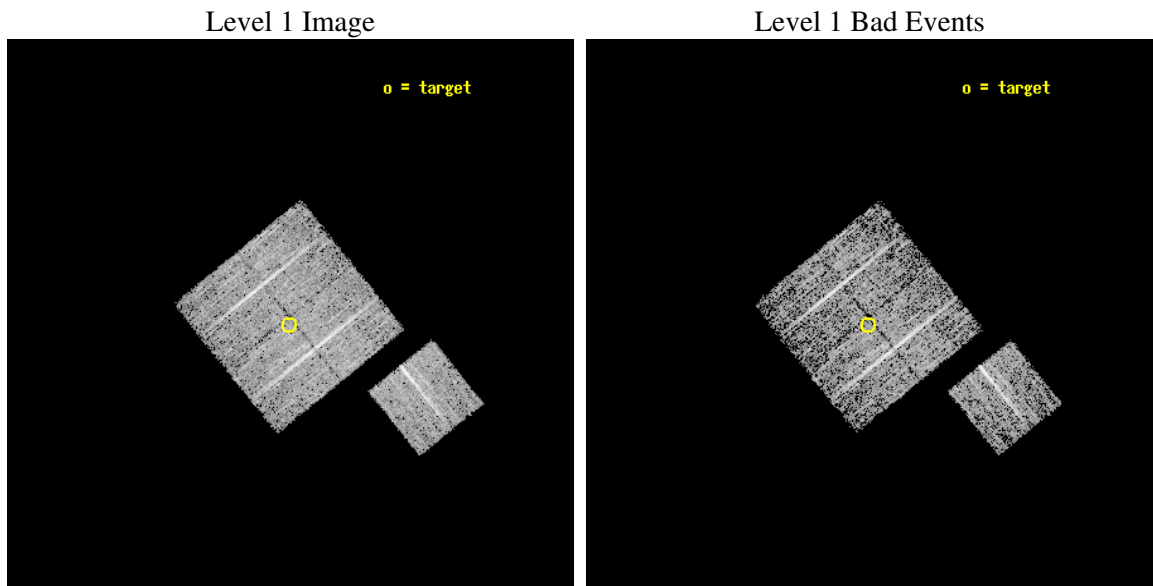
seq_num	900219
obs_id	3619
title	CHANDRA LARGE SCALE SURVEY OF THE NOAO BOOTES DEEP FIELD
observer	Dr. Stephen Murray
object	NOAO FIELD F4
dtcycle	0
cycle	P
ra_targ	216.744263
dec_targ	35.290164
ra_nom	216.74160166272
dec_nom	35.294211565778
roll_nom	141.01024700256
revision	2
ontime	4777.0999908149
livetime	4714.6836625851
ontime0	4773.9590005577
ontime1	4777.0999908149
ontime2	4777.0999908149
ontime3	4777.0999908149
ontime6	4777.0999908149
l2events	9540



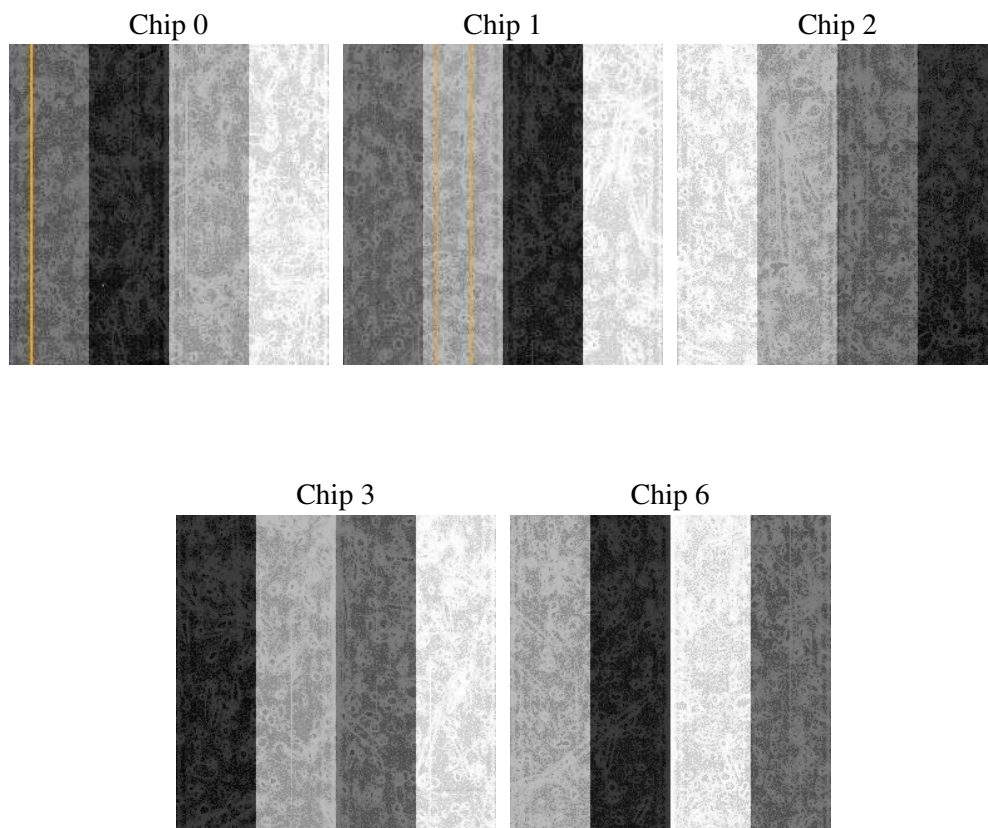
2 OBI

2.1 OBI

2.1.1 Images



2.1.2 Bias



2.1.3 Parameters

obi_num	0
ascdsver	7.6.8
caldsver	3.2.2
date	2006-07-29T16:49:20
revision	2

sched_exp_time	5000.000000
ontime	4780.62121135
ontime0	4777.4802011847
ontime1	4780.621191442
ontime2	4780.621191442
ontime3	4780.62121135
ontime6	4780.62121135
l1events	120058

2.1.4 Events

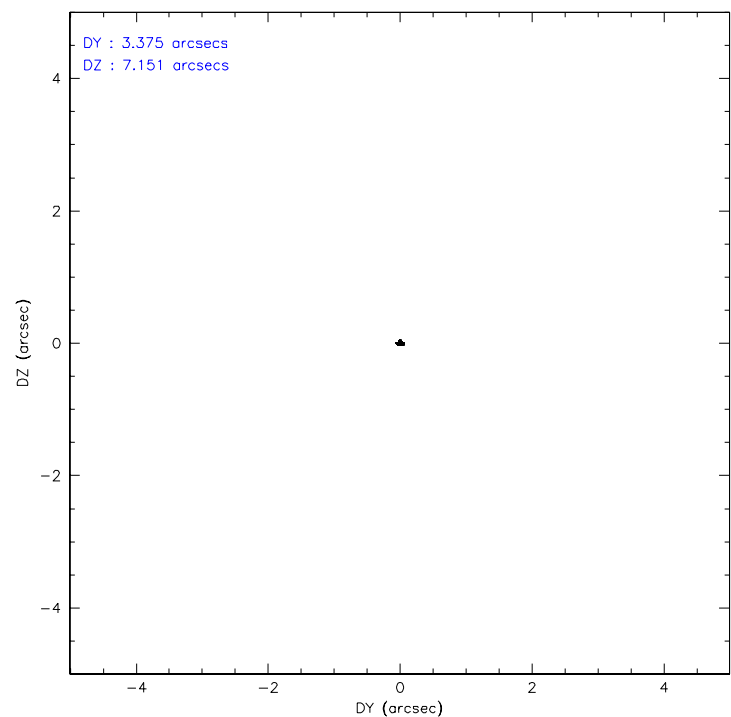
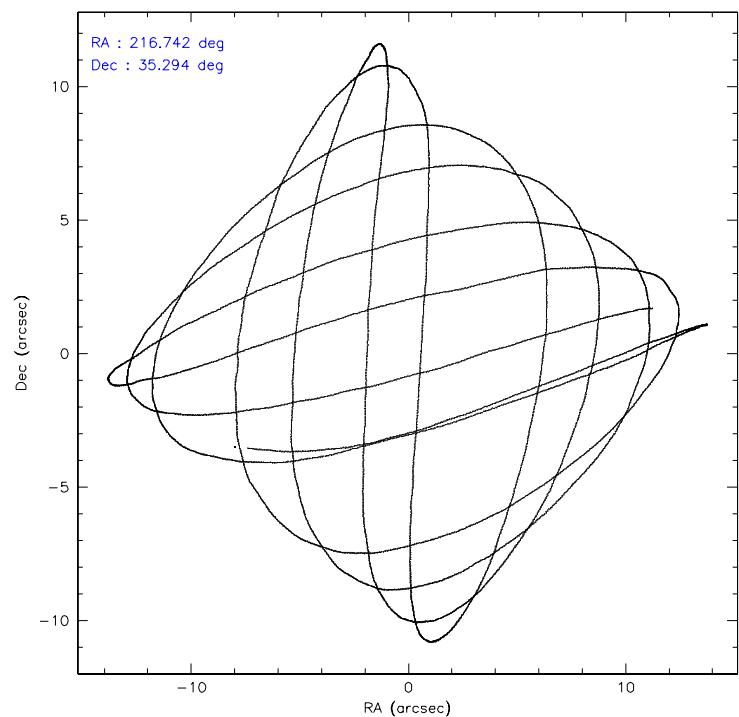
	ccd 0	ccd 1	ccd 2	ccd 3	ccd 6
level 1 events	23045	21696	25543	24720	25054
rejected events	20621	19278	23249	22531	22668
rejected %	89%	88%	91%	91%	90%

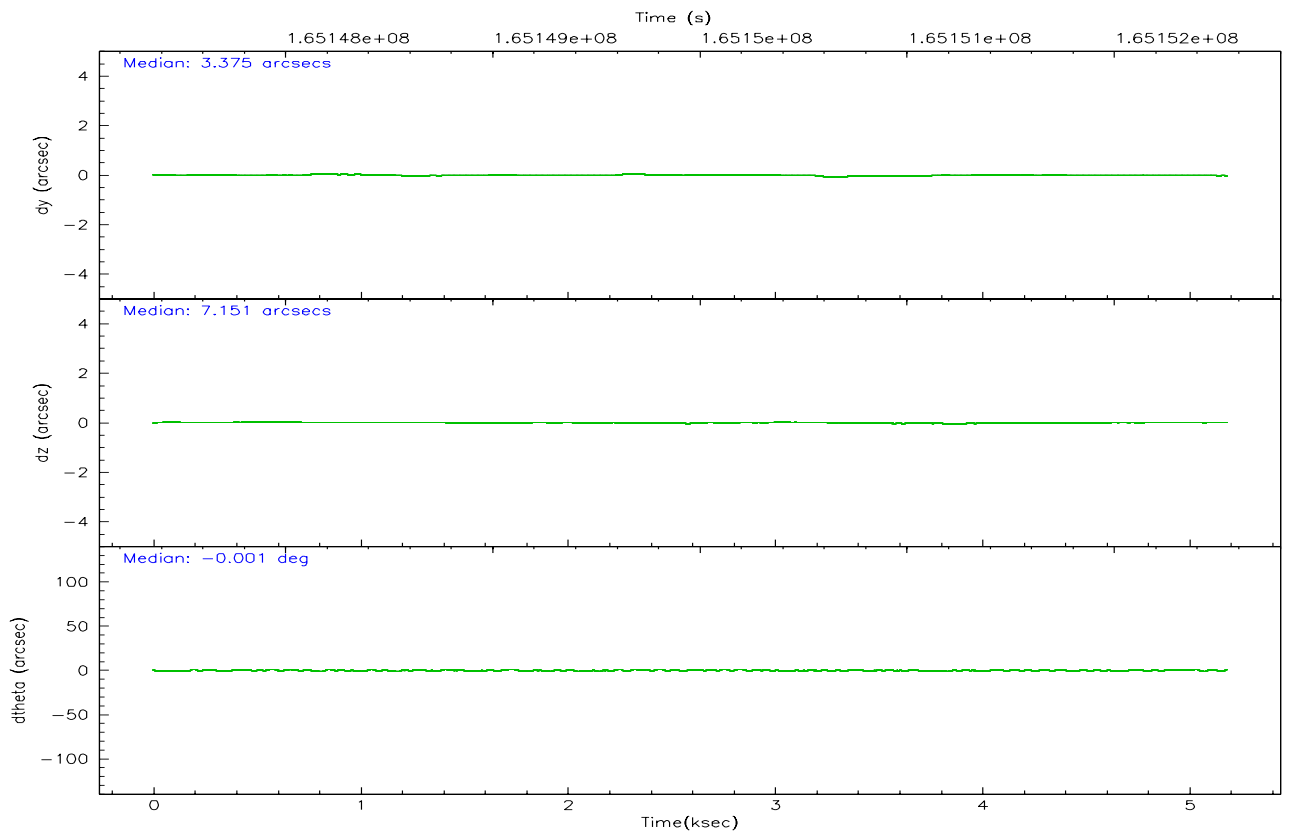
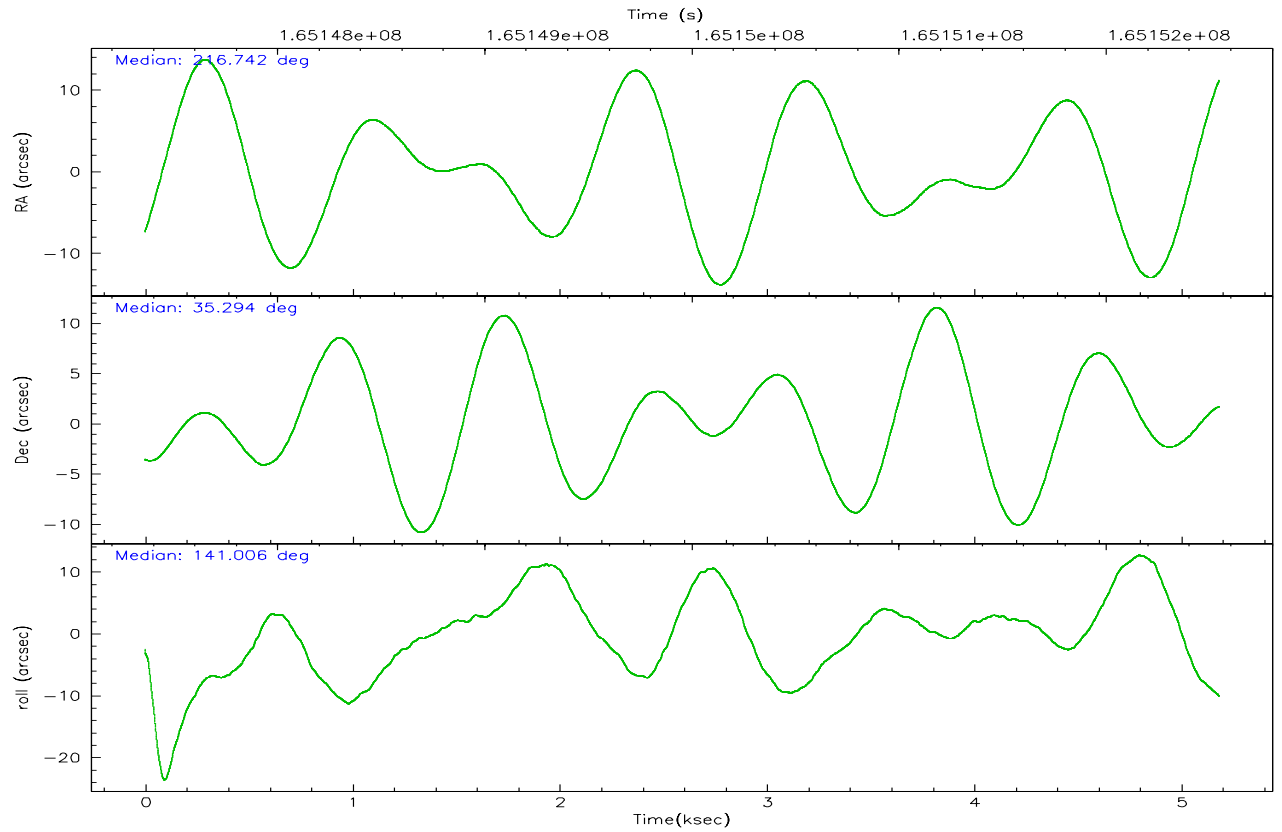
	ccd 0	ccd 1	ccd 2	ccd 3	ccd 6
grade 0 events	864	829	895	782	868
	3%	3%	3%	3%	3%
grade 1 events	11	9	9	13	12
	0%	0%	0%	0%	0%
grade 2 events	596	555	507	469	491
	2%	2%	1%	1%	1%
grade 3 events	265	298	256	271	281
	1%	1%	1%	1%	1%
grade 4 events	282	293	245	243	262
	1%	1%	0%	0%	1%
grade 5 events	691	730	664	850	823
	2%	3%	2%	3%	3%
grade 6 events	418	444	392	424	484
	1%	2%	1%	1%	1%
grade 7 events	19918	18538	22575	21668	21833
	86%	85%	88%	87%	87%

2.2 Compared Parameters

Parameter	Planned	Actual	Parameter	Planned	Actual
Instrument	ACIS	ACIS	Obspar format version number	6	6
Detector	ACIS-01236	ACIS-01236	Obspar file type	PREDICTED	ACTUAL
Grating	NONE	NONE	Obspar update status	NONE	UPDATED
Data mode	VFAINT	VFAINT	On-chip summing requested	N	N
Observation mode	POINTING	POINTING	Subarray requested	NONE	NONE
Pointing RA	216.774746	216.7416016627165	Alternating exposures requested	N	N
Pointing Dec	35.290076	35.29421156577811	Primary exposure time	0.000000	3.1
Pointing Roll	140.782392	141.0102470025609			
SIM focus pos (mm)	-0.782348	-0.7809083437167272			
SIM defocus (mm)	0	0.001439871863259334			
SIM translation stage pos (mm)	-233.592463	-233.5874344608287			
SIM translation stage offset (mm)	0	-0.005018542100998502			
Observation start time	165147539.184000	165147163.56468			
Observation start date	2003-03-27T10:17:55	2003-03-27T10:12:43			
Observation end time	165152539.184000	165152673.96491			
Observation end date	2003-03-27T11:41:15	2003-03-27T11:44:33			
Read mode	TIMED	TIMED			

2.3 Aspect



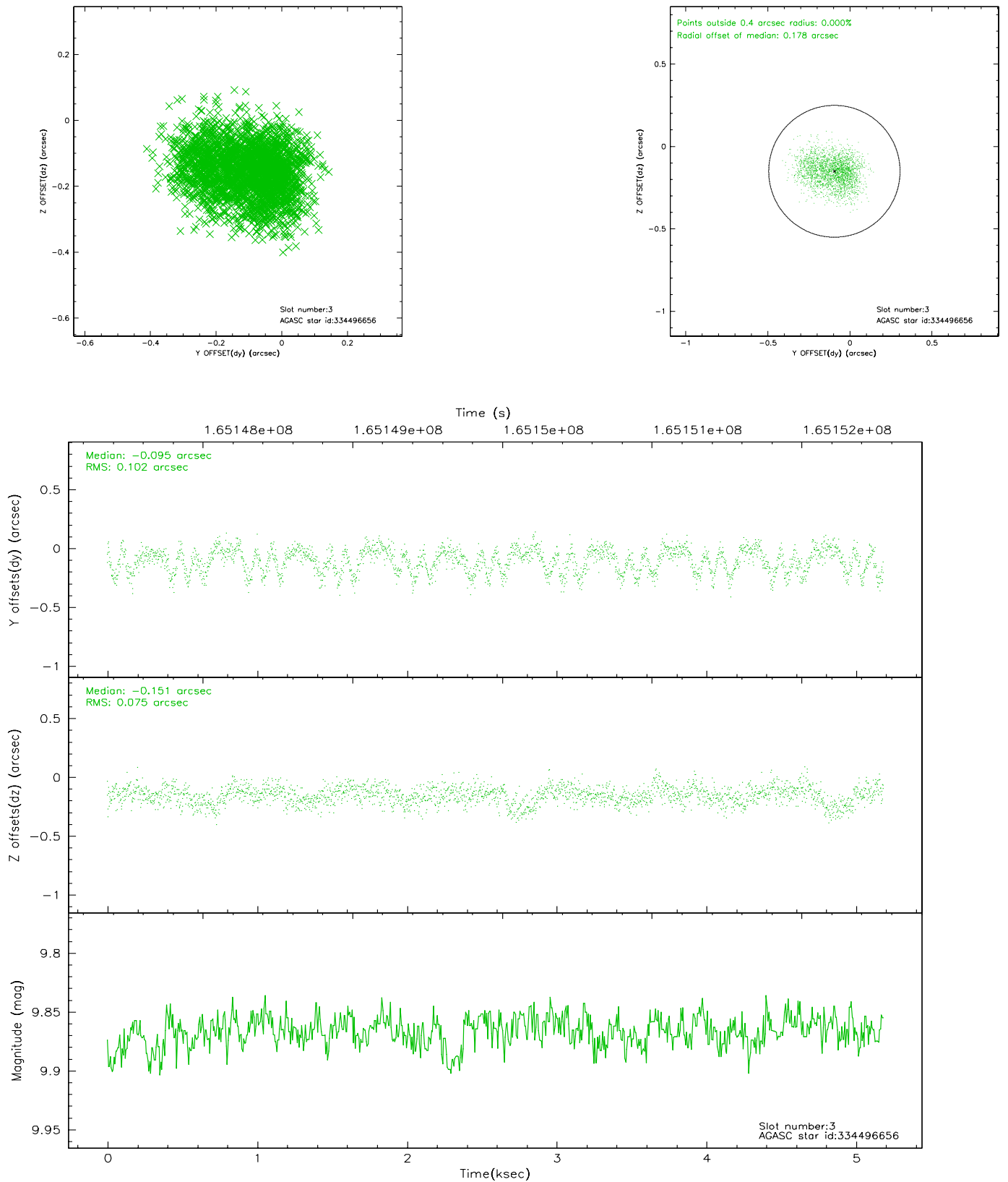


Slot Statistics

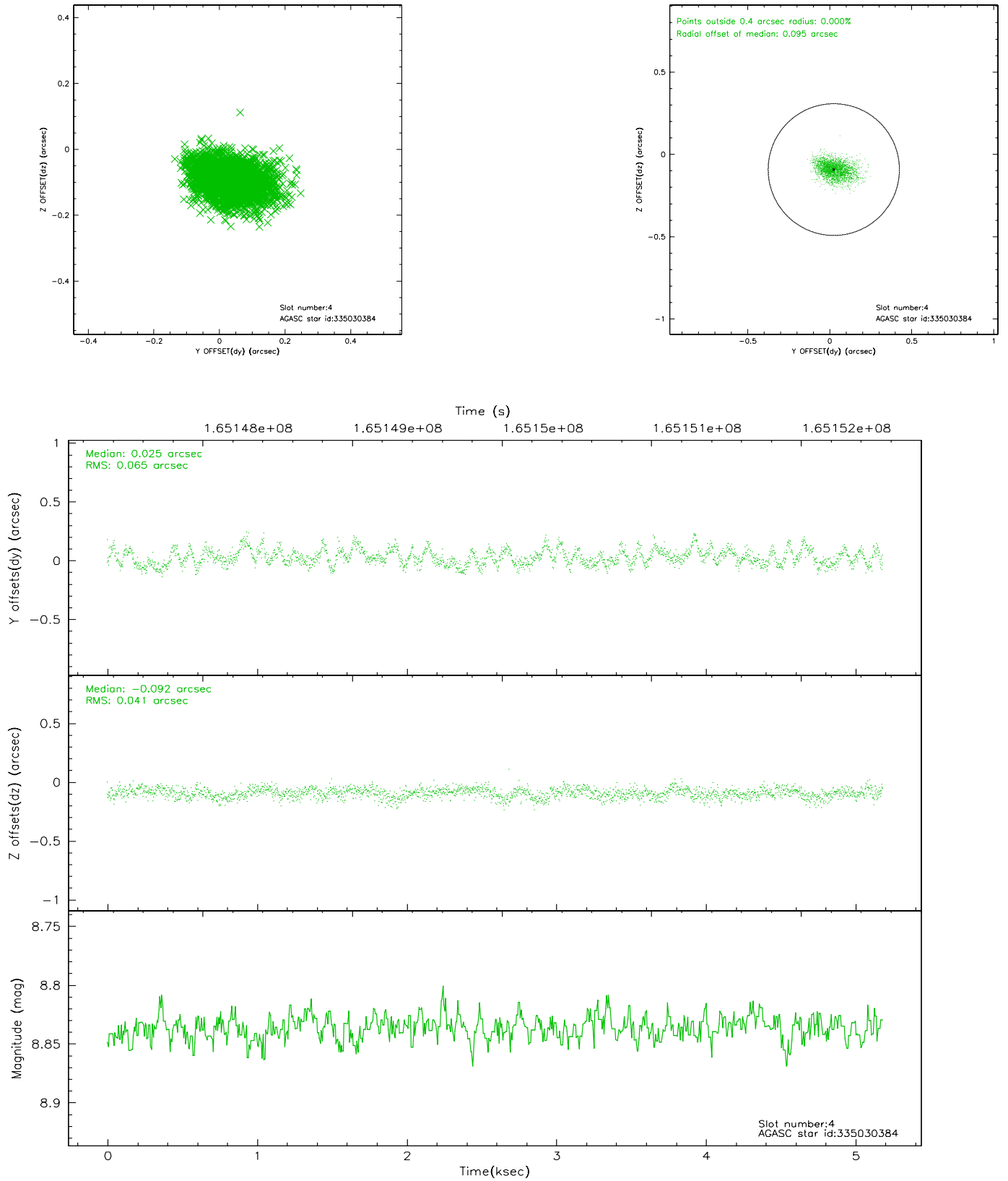
slot	status	id	mag	n_pts	med_dy	med_dz	dr1	dr2	ra	dec	mean_y	mean_z
0	FID	ACIS-I-1	7.25	1265	-0.002	0.042	0.006	0.010	0.000000	0.000000	936.39	-830.52
1	FID	ACIS-I-5	7.24	1265	-0.059	0.053	0.006	0.010	0.000000	0.000000	-1811.09	1066.44
2	FID	ACIS-I-6	7.26	1265	-0.030	-0.025	0.006	0.011	0.000000	0.000000	400.69	1712.16
3	GUIDE	334496656	9.87	2528	-0.095	-0.151	0.138	0.215	215.929218	35.031287	1348.81	2289.60
4	GUIDE	335030384	8.84	2528	0.025	-0.092	0.080	0.137	216.806407	34.722197	-1364.38	1525.53
5	GUIDE	335417968	9.40	2523	0.074	0.127	0.109	0.180	217.358149	35.055285	-1863.31	-435.34
6	GUIDE	335419120	9.64	2525	0.021	0.077	0.118	0.190	216.521861	35.833546	1809.17	-1049.70
7	GUIDE	335422272	9.46	2526	-0.013	0.037	0.132	0.204	217.586135	35.522660	-1305.10	-2159.83

2.4 Star Slots

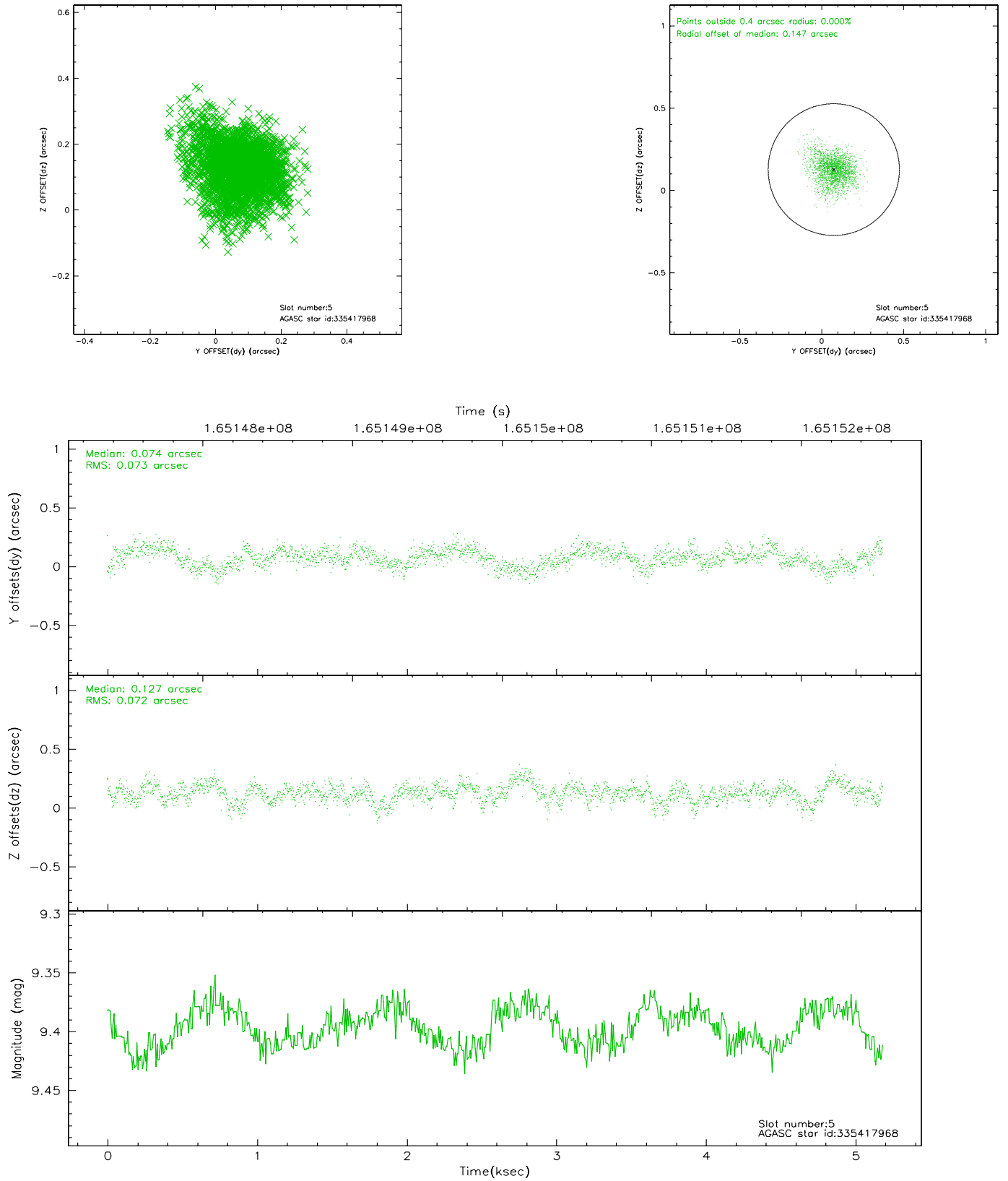
2.4.1 Slot 3



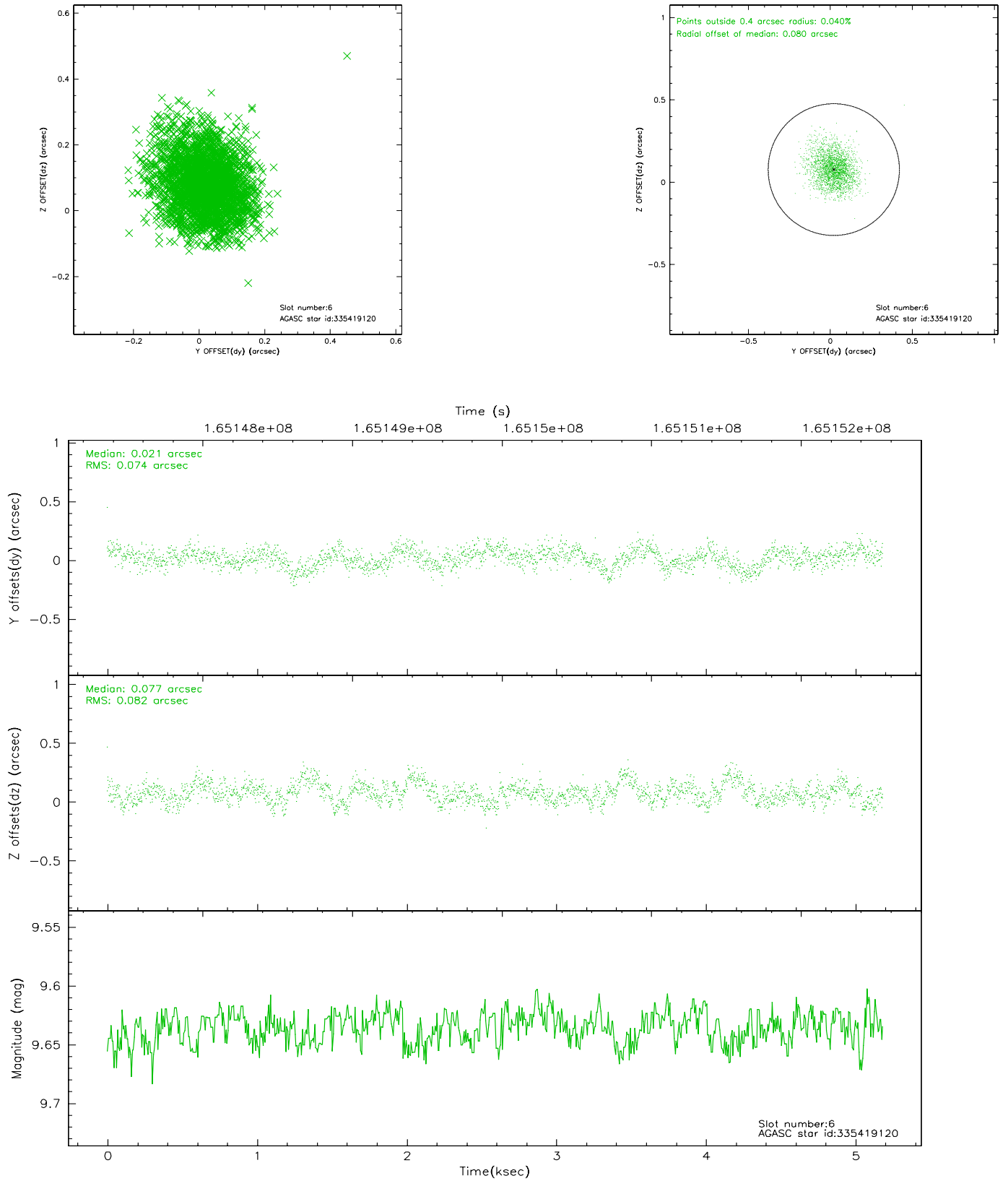
2.4.2 Slot 4



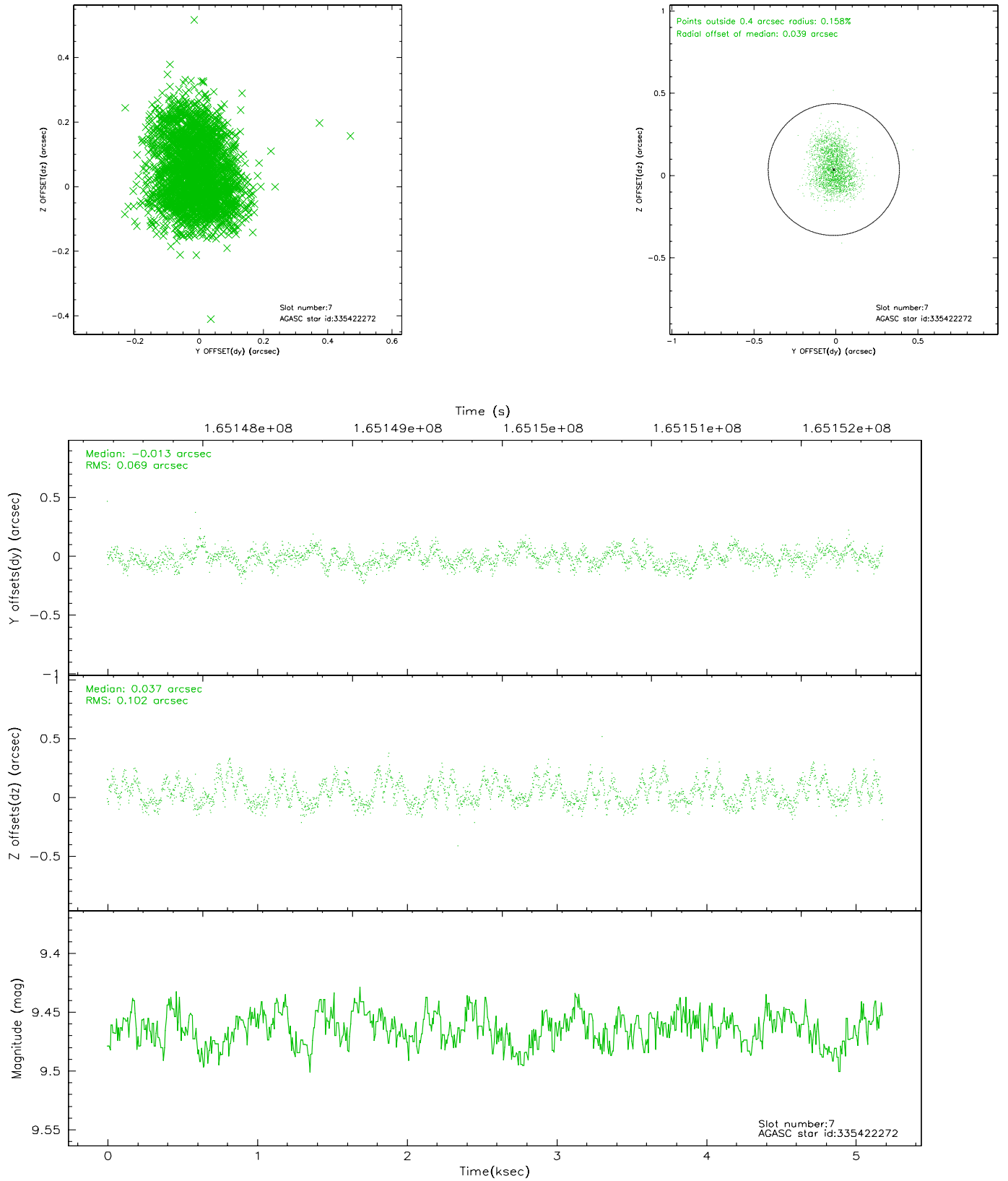
2.4.3 Slot 5



2.4.4 Slot 6

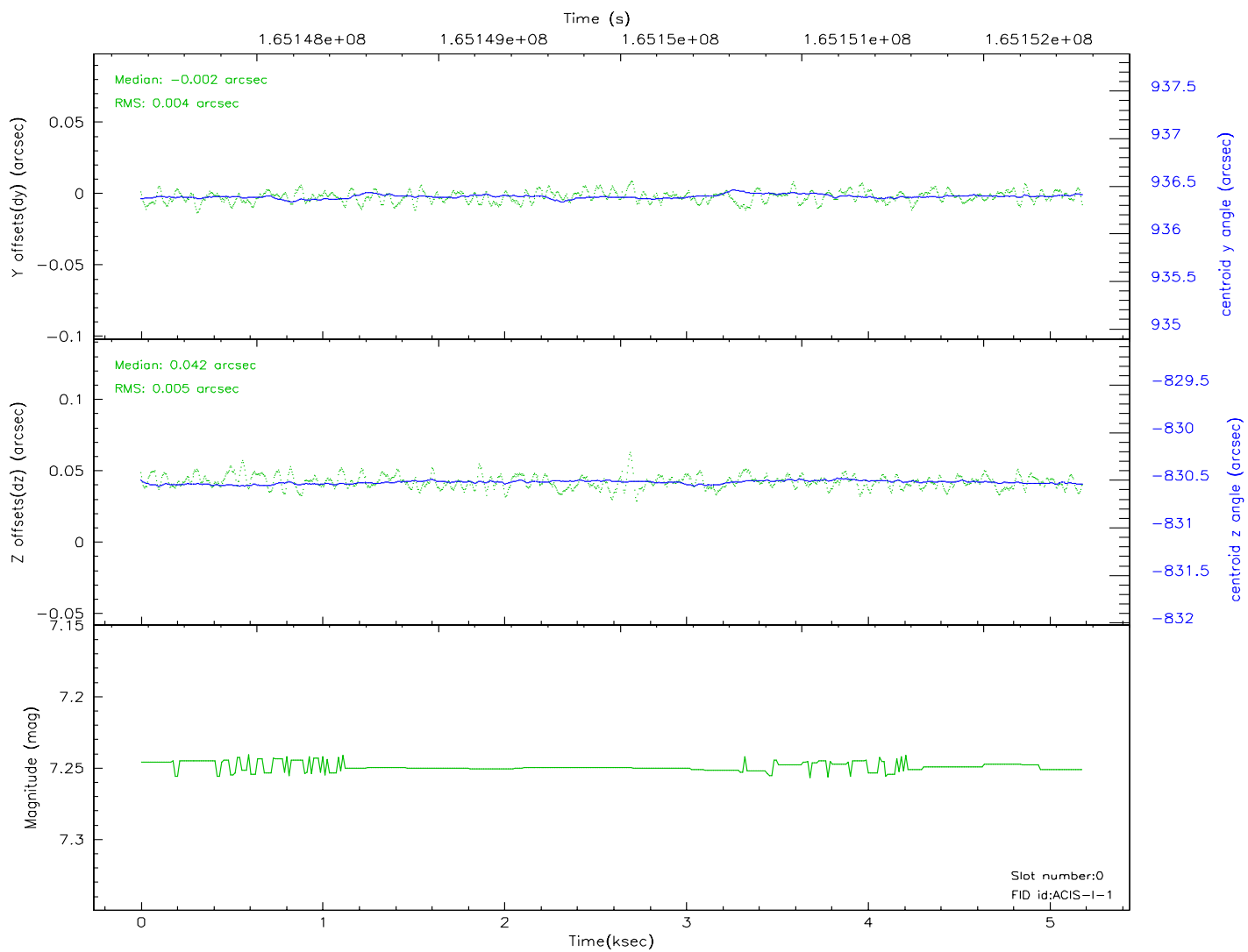
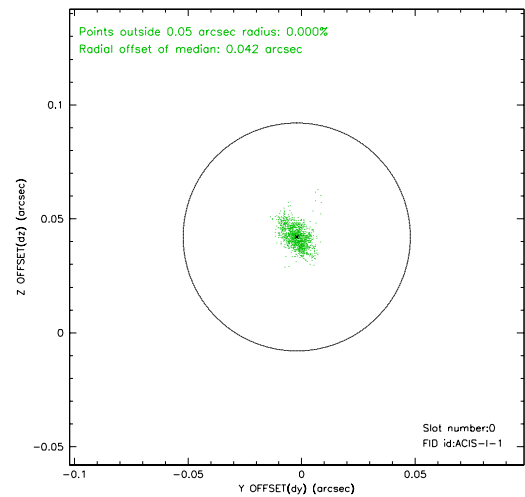
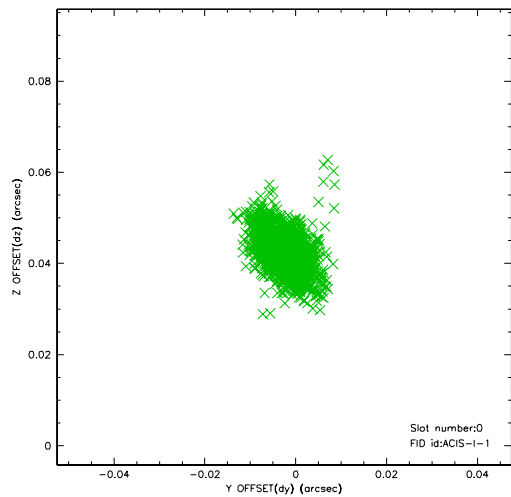


2.4.5 Slot 7

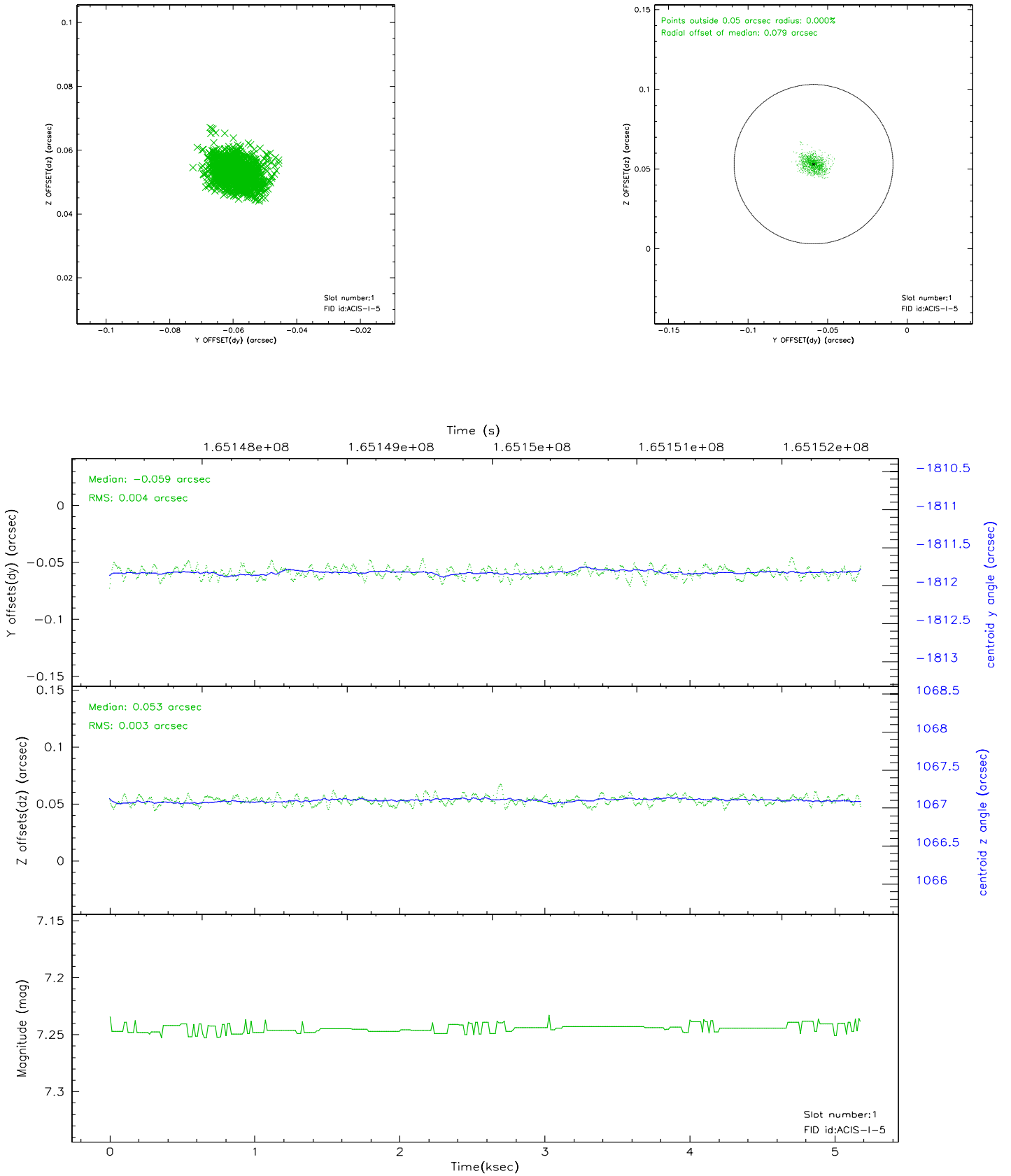


2.5 FID Slots

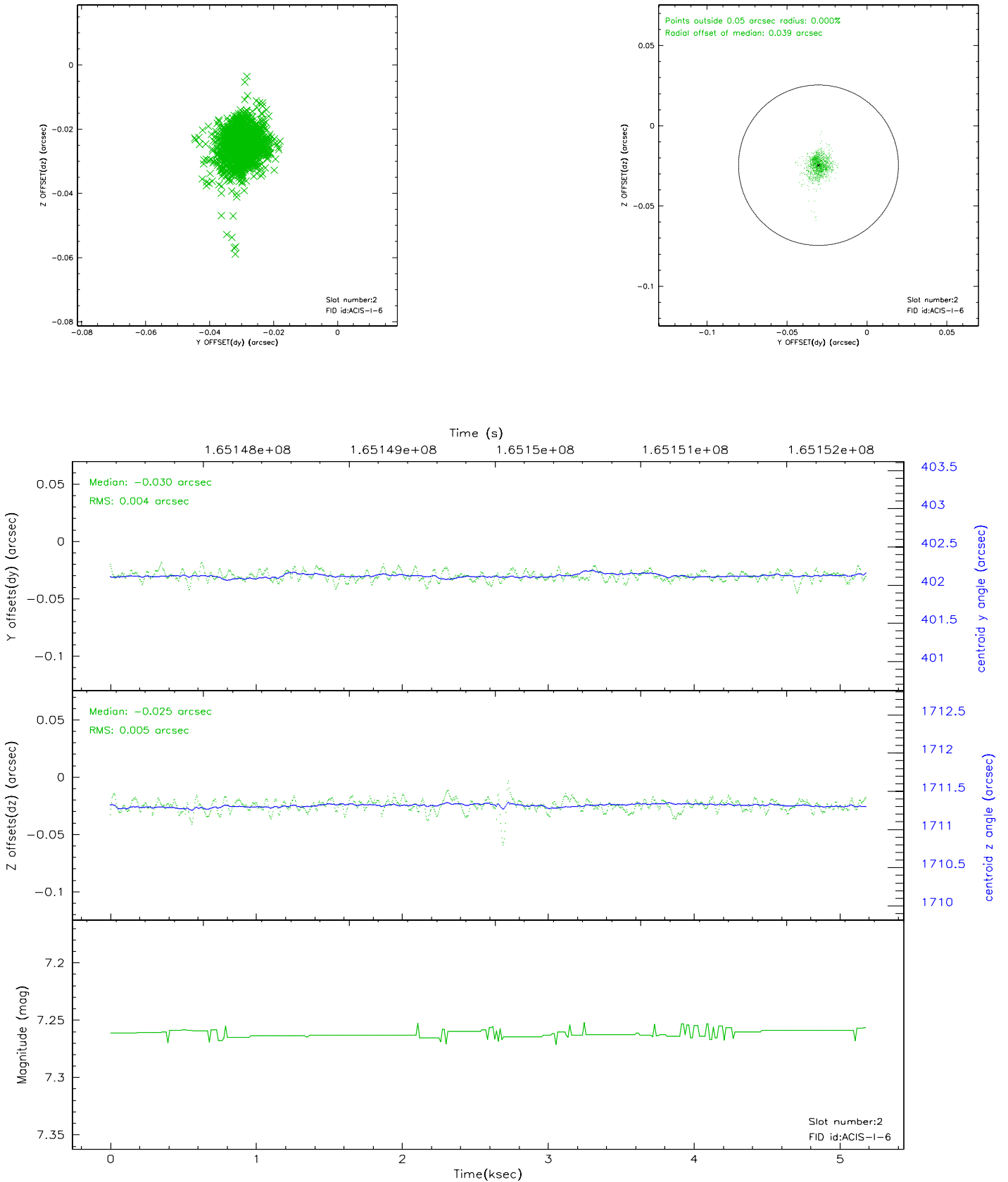
2.5.1 Slot 0



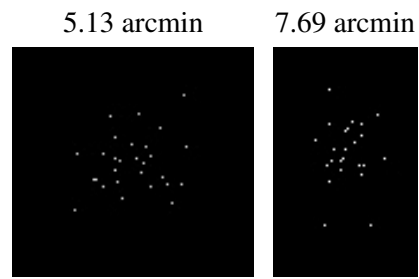
2.5.2 Slot 1



2.5.3 Slot 2



3 Point Sources



A Summary

A.1 Status

V&V Scientist	Jen Lauer
V&V Date (YYYY-MM-DD)	2006.07.30
V&V Edition	1
V&V Disposition and Status	OK
V&V Charge Time	4.777

A.2 Comments