

V&V Reference Report

L2 ASCDS Version : 7.6.8

Observation 3610 - L2 Version 001
Chandra X-Ray Center

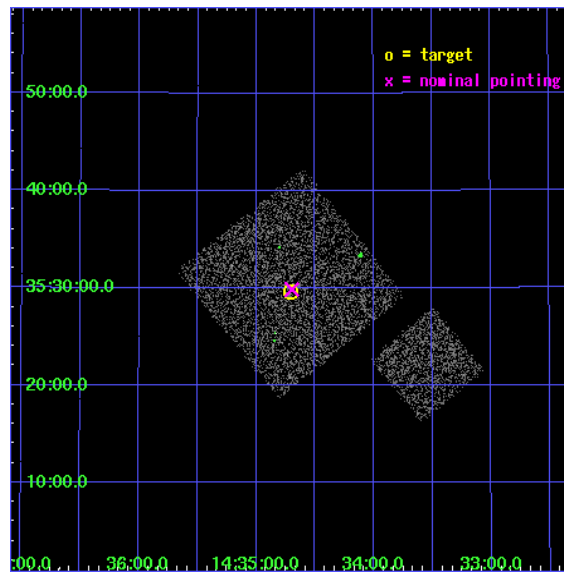
L2 Processing Date : Jul 29 2006

Contents

1	Front	2
2	OBI	3
2.1	OBI	3
2.1.1	Images	3
2.1.2	Bias	3
2.1.3	Parameters	4
2.1.4	Events	4
2.2	Compared Parameters	5
2.3	Aspect	6
2.4	Star Slots	9
2.4.1	Slot 3	9
2.4.2	Slot 4	10
2.4.3	Slot 5	11
2.4.4	Slot 6	12
2.4.5	Slot 7	13
2.5	FID Slots	14
2.5.1	Slot 0	14
2.5.2	Slot 1	15
2.5.3	Slot 2	16
3	Point Sources	17
A	Summary	18
A.1	Status	18
A.2	Comments	18

1 Front

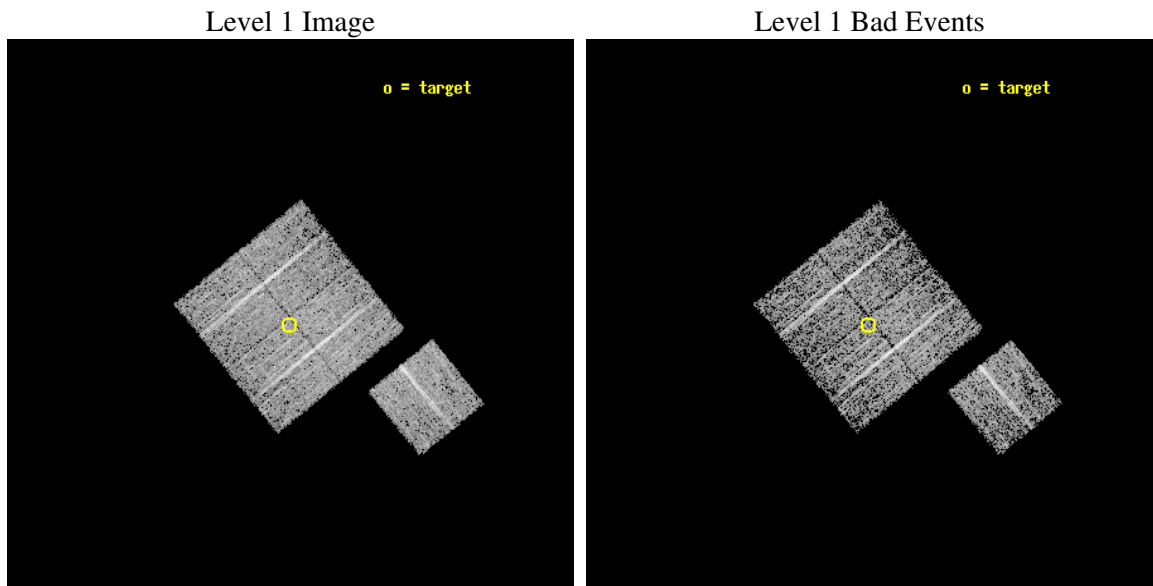
seq_num	900210
obs_id	3610
title	CHANDRA LARGE SCALE SURVEY OF THE NOAO BOOTES DEEP FIELD
observer	Dr. Stephen Murray
object	NOAO FIELD F36
dtcycle	0
cycle	P
ra_targ	218.676831
dec_targ	35.493858
ra_nom	218.67415931639
dec_nom	35.497832534821
roll_nom	141.01024021432
revision	2
ontime	4773.9590205848
livetime	4711.5837314434
ontime0	4777.0999908149
ontime1	4777.0999908149
ontime2	4777.0999908149
ontime3	4773.9590205848
ontime6	4777.0999908149
l2events	9778



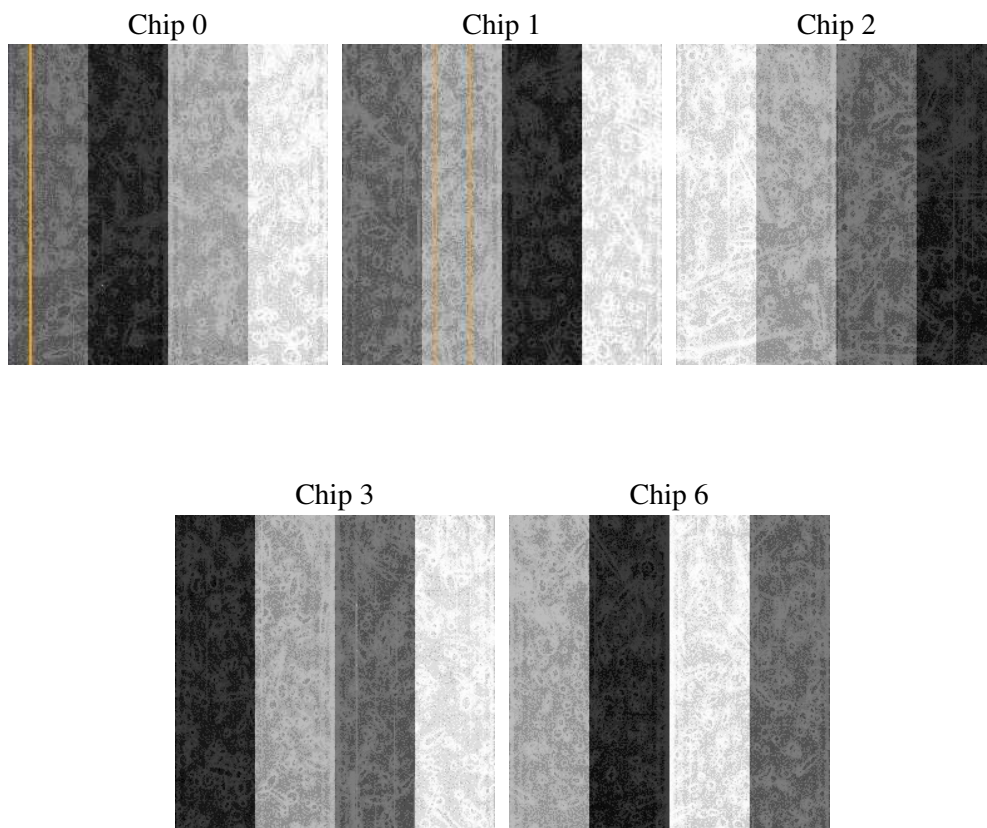
2 OBI

2.1 OBI

2.1.1 Images



2.1.2 Bias



2.1.3 Parameters

obi_num	1
ascdsver	7.6.8
caldbver	3.2.2
date	2006-07-30T01:56:20
revision	2

sched_exp_time	5000.000000
ontime	4777.4722114503
ontime0	4780.6131816804
ontime1	4780.6131816804
ontime2	4780.6131816804
ontime3	4777.4722114503
ontime6	4780.6131816804
l1events	117348

2.1.4 Events

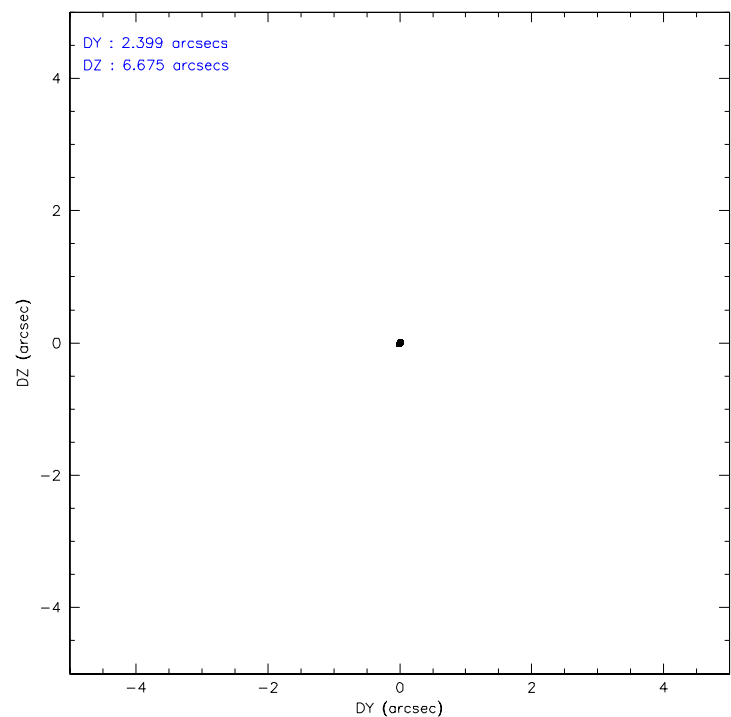
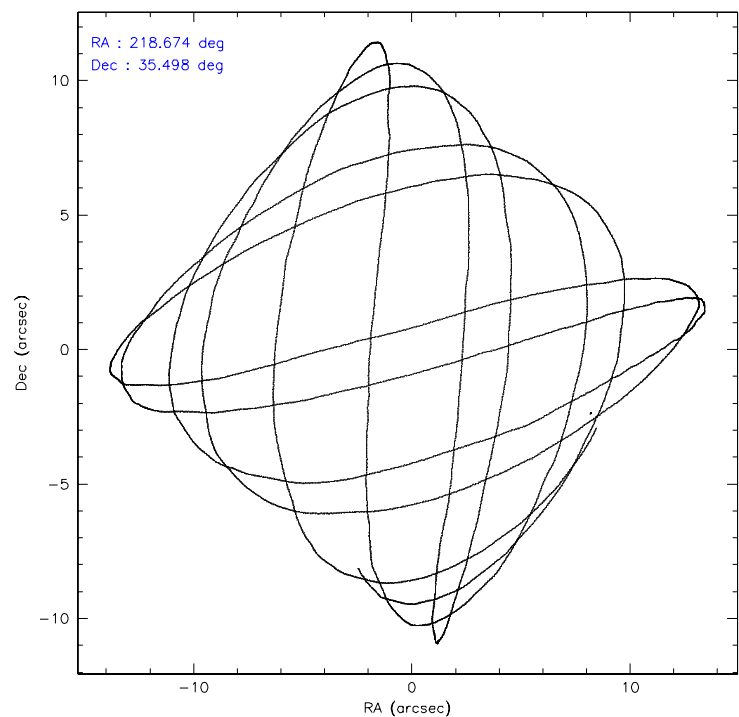
	ccd 0	ccd 1	ccd 2	ccd 3	ccd 6
level 1 events	21029	22697	25833	23599	24190
rejected events	18703	20184	23440	21311	21811
rejected %	88%	88%	90%	90%	90%

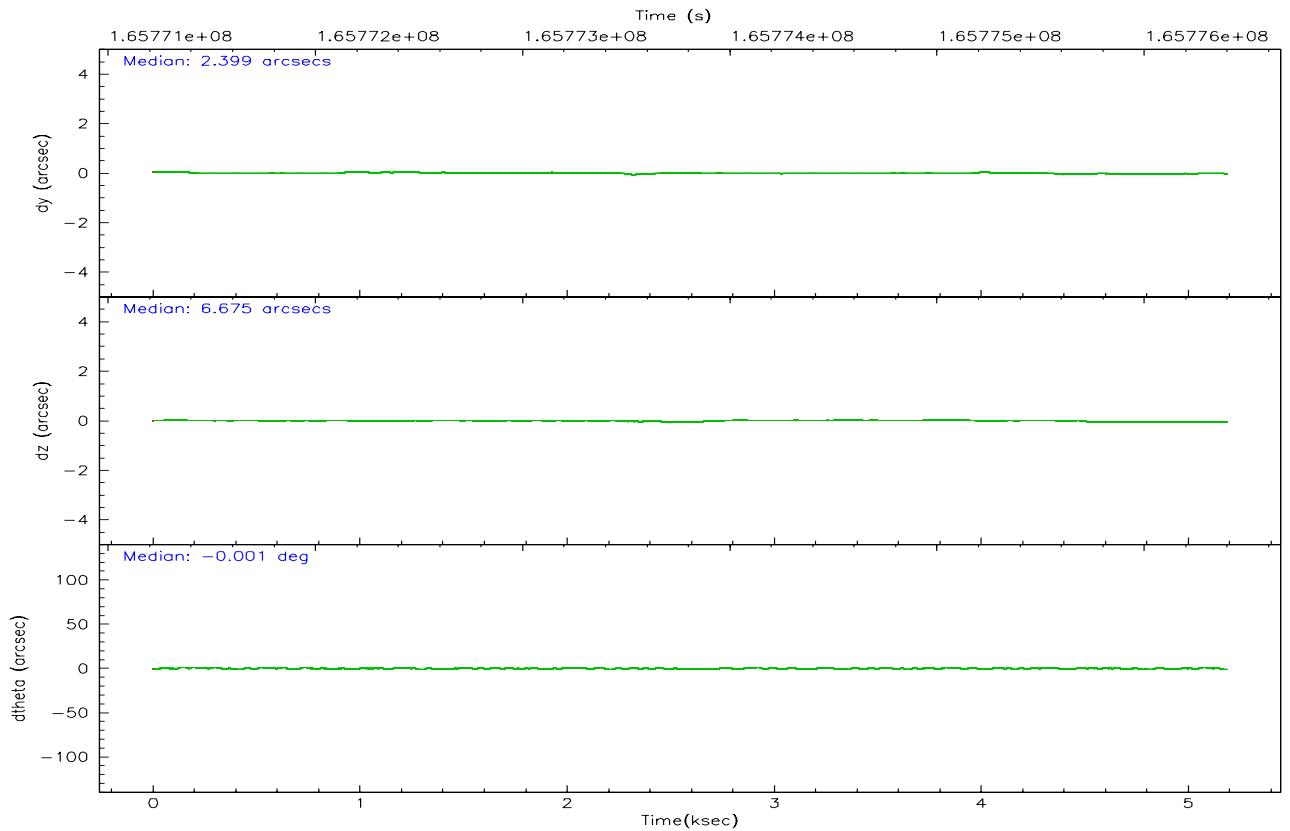
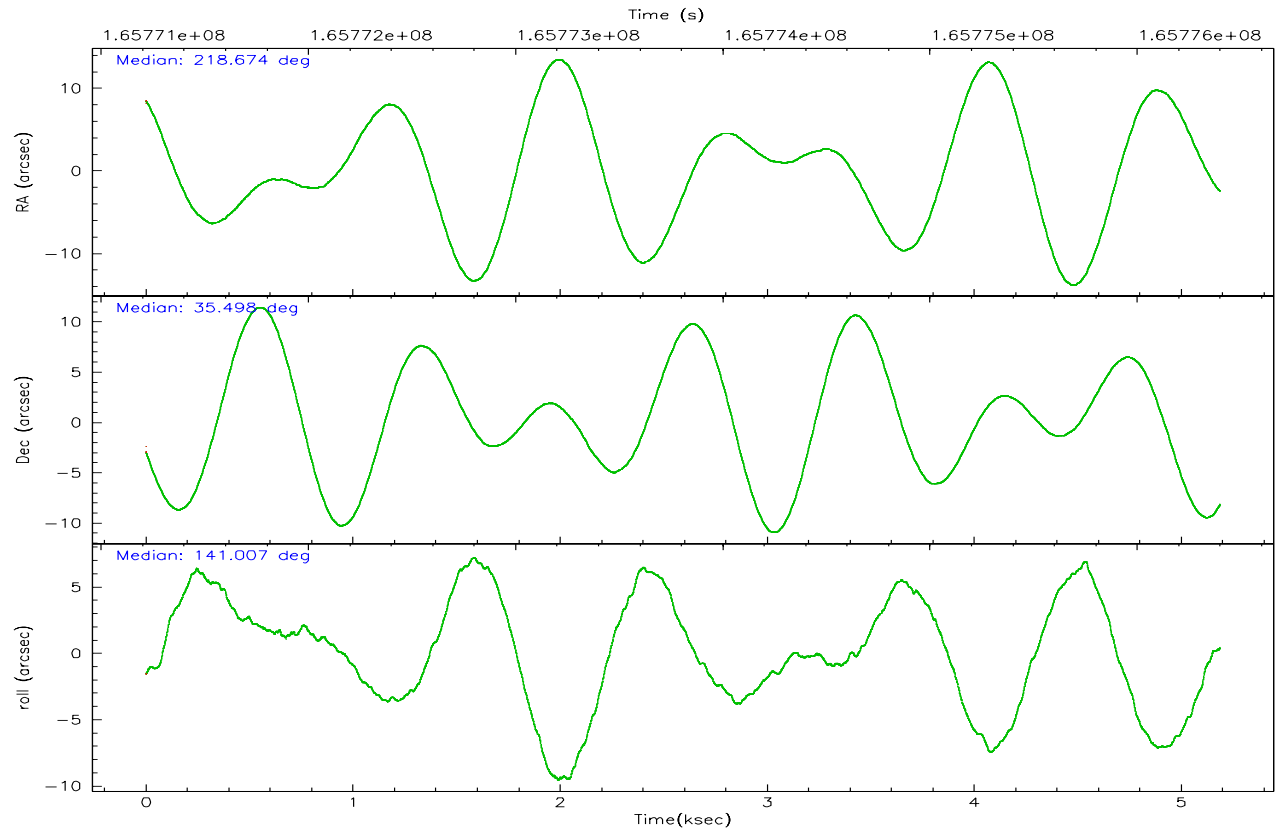
	ccd 0	ccd 1	ccd 2	ccd 3	ccd 6
grade 0 events	815	813	936	922	822
	3%	3%	3%	3%	3%
grade 1 events	11	11	12	17	8
	0%	0%	0%	0%	0%
grade 2 events	518	551	530	477	491
	2%	2%	2%	2%	2%
grade 3 events	296	318	275	254	290
	1%	1%	1%	1%	1%
grade 4 events	252	330	295	246	295
	1%	1%	1%	1%	1%
grade 5 events	702	768	663	801	767
	3%	3%	2%	3%	3%
grade 6 events	445	509	357	392	481
	2%	2%	1%	1%	1%
grade 7 events	17990	19397	22765	20490	21036
	85%	85%	88%	86%	86%

2.2 Compared Parameters

Parameter	Planned	Actual	Parameter	Planned	Actual
Instrument	ACIS	ACIS	Obspar format version number	6	6
Detector	ACIS-01236	ACIS-01236	Obspar file type	PREDICTED	ACTUAL
Grating	NONE	NONE	Obspar update status	NONE	UPDATED
Data mode	VFAINT	VFAINT	On-chip summing requested	N	N
Observation mode	POINTING	POINTING	Subarray requested	NONE	NONE
Pointing RA	218.707392	218.6741593163923	Alternating exposures requested	N	N
Pointing Dec	35.493779	35.49783253482093	Primary exposure time	0.000000	3.1
Pointing Roll	140.782250	141.0102402143154			
SIM focus pos (mm)	-0.782348	-0.7809083437167272			
SIM defocus (mm)	0	0.001439871863259334			
SIM translation stage pos (mm)	-233.592463	-233.5874344608287			
SIM translation stage offset (mm)	0	-0.005018542100998502			
Observation start time	165771405.184000	165771029.32849			
Observation start date	2003-04-03T15:35:41	2003-04-03T15:30:29			
Observation end time	165776405.184000	165776586.87872			
Observation end date	2003-04-03T16:59:01	2003-04-03T17:03:06			
Read mode	TIMED	TIMED			

2.3 Aspect



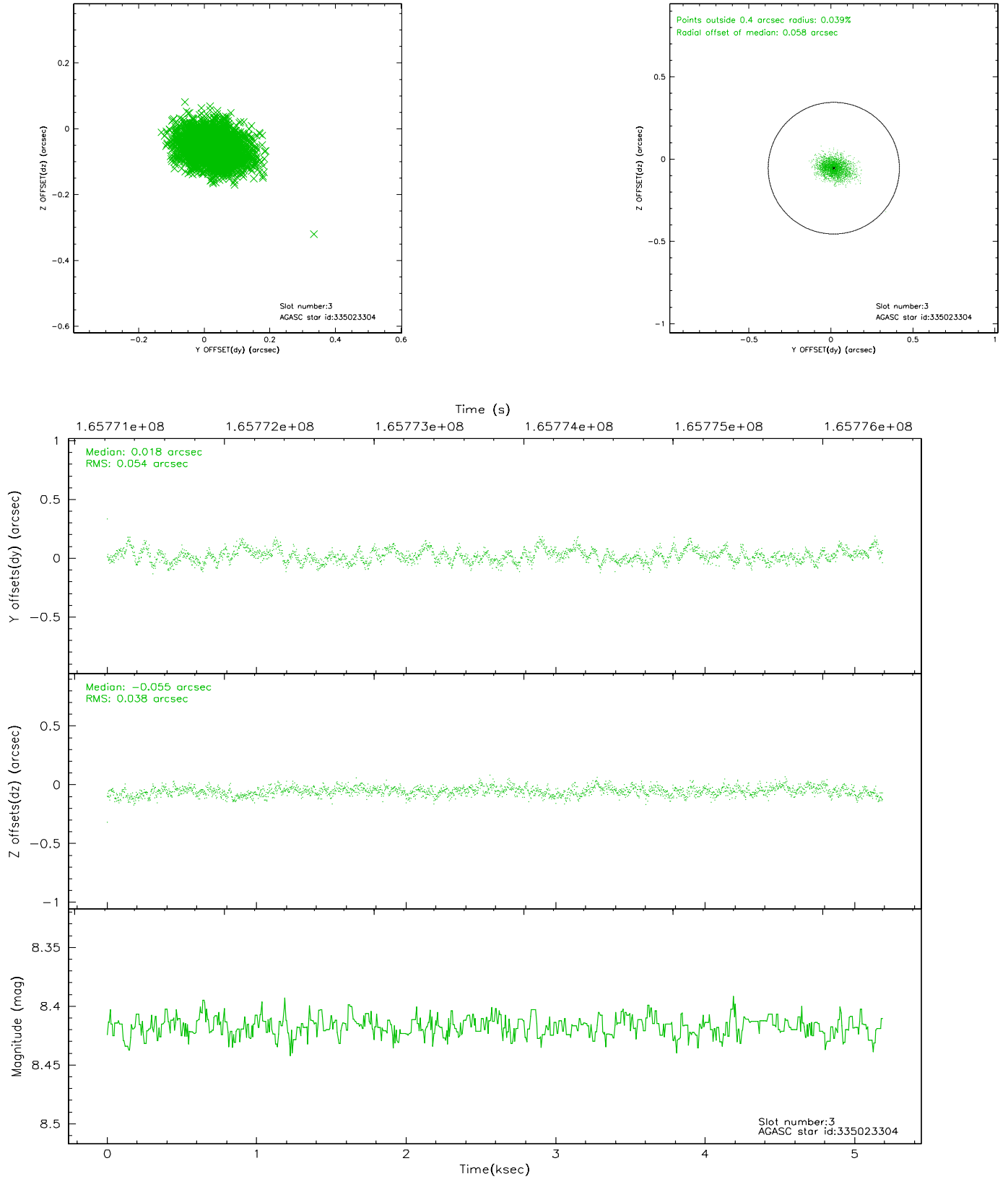


Slot Statistics

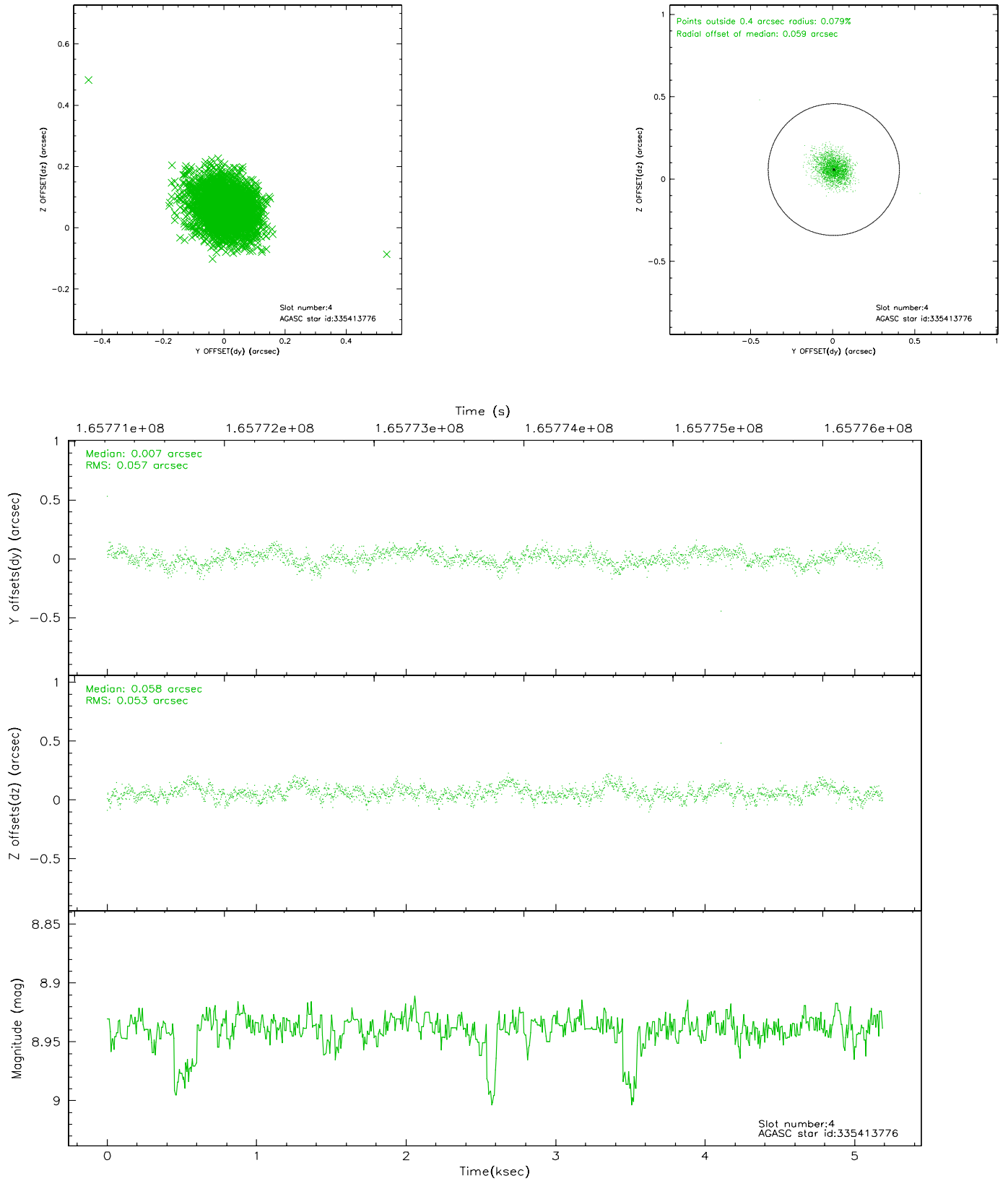
slot	status	id	mag	n_pts	med_dy	med_dz	dr1	dr2	ra	dec	mean_y	mean_z
0	FID	ACIS-I-1	7.25	1266	-0.006	0.021	0.006	0.012	0.000000	0.000000	937.38	-830.06
1	FID	ACIS-I-5	7.24	1265	-0.050	0.046	0.006	0.010	0.000000	0.000000	-1810.08	1066.93
2	FID	ACIS-I-6	7.26	1266	-0.035	0.003	0.006	0.012	0.000000	0.000000	401.69	1712.67
3	GUIDE	335023304	8.42	2532	0.018	-0.055	0.070	0.117	218.883608	34.686545	-2240.95	1921.07
4	GUIDE	335413776	8.94	2532	0.007	0.058	0.081	0.133	218.421411	36.051962	1915.98	-1030.59
5	GUIDE	335414336	8.94	2532	0.017	-0.014	0.152	0.226	218.979022	35.090910	-1535.01	616.29
6	GUIDE	335421696	8.96	2528	-0.014	-0.070	0.069	0.110	218.045699	35.772449	2135.38	439.95
7	GUIDE	335549864	7.52	2531	-0.030	0.089	0.071	0.109	219.286726	35.929745	-311.50	-2287.41

2.4 Star Slots

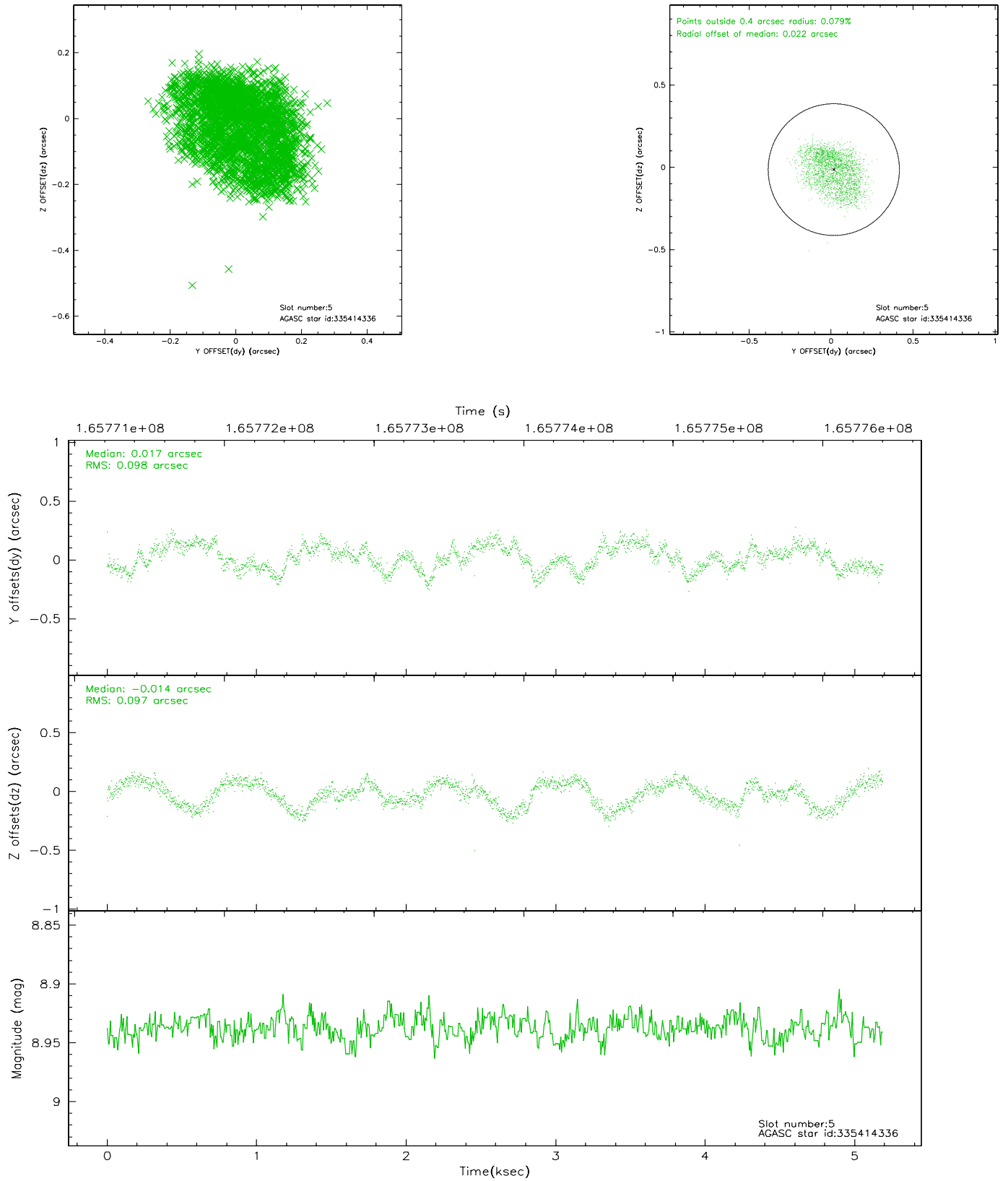
2.4.1 Slot 3



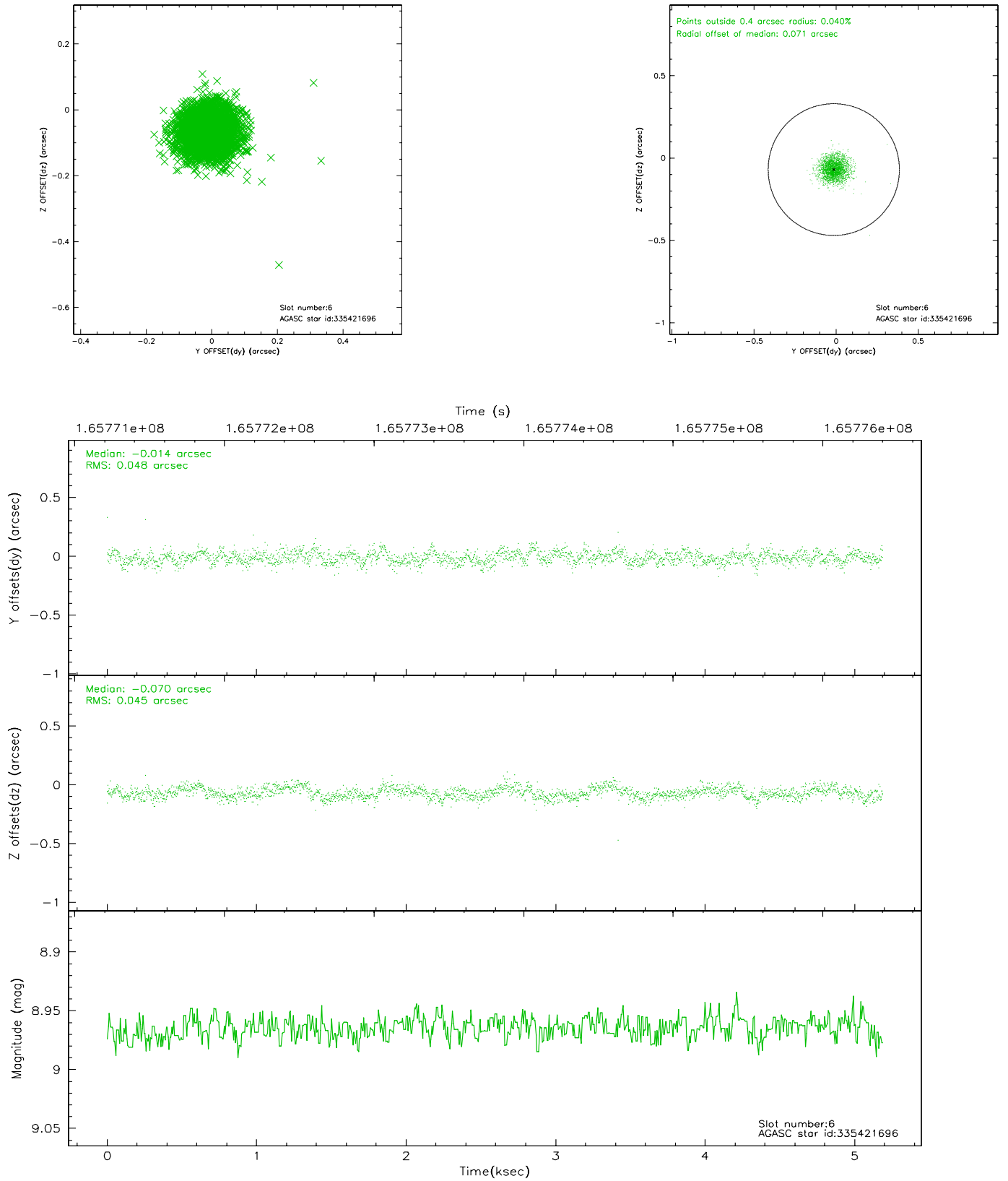
2.4.2 Slot 4



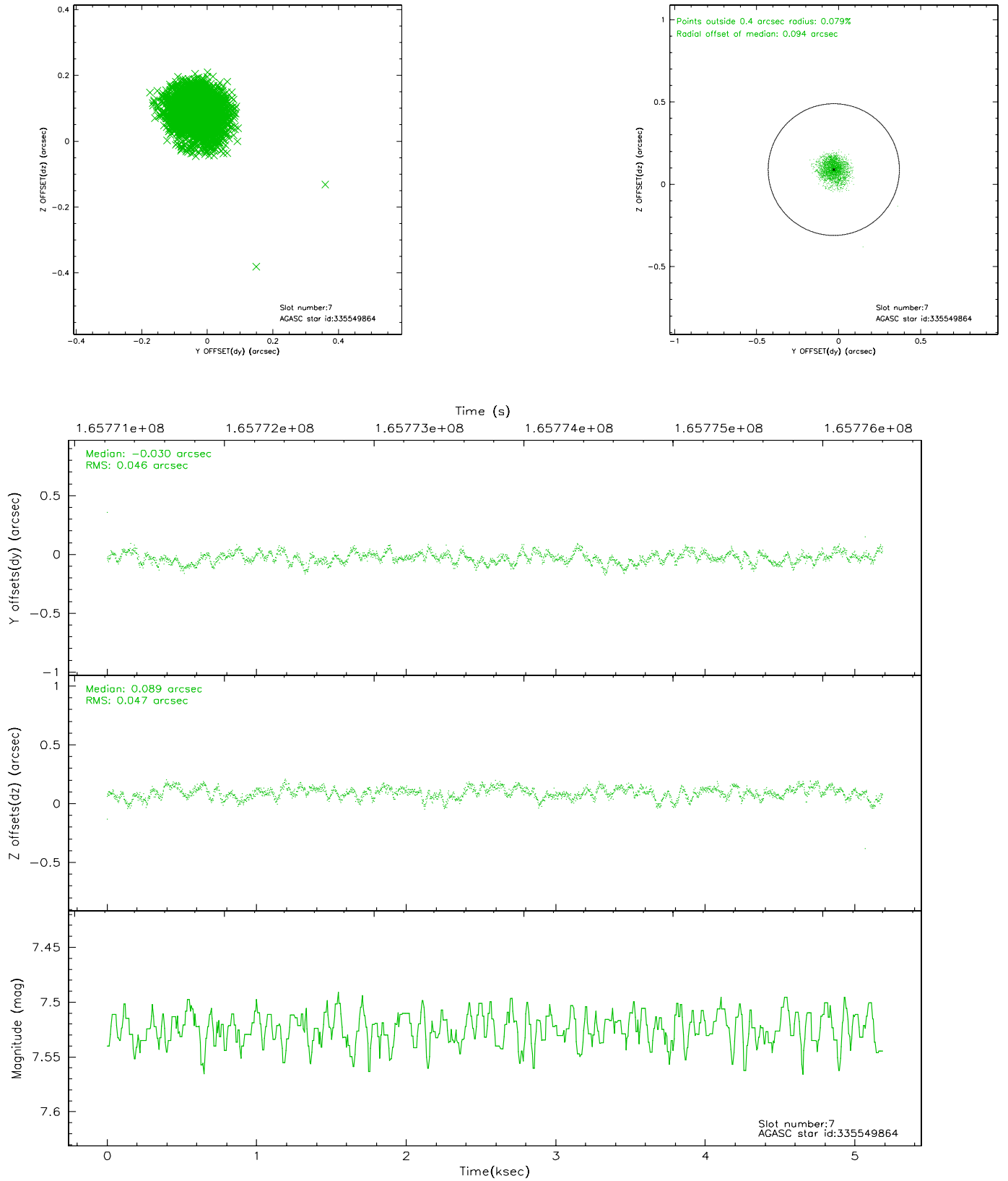
2.4.3 Slot 5



2.4.4 Slot 6

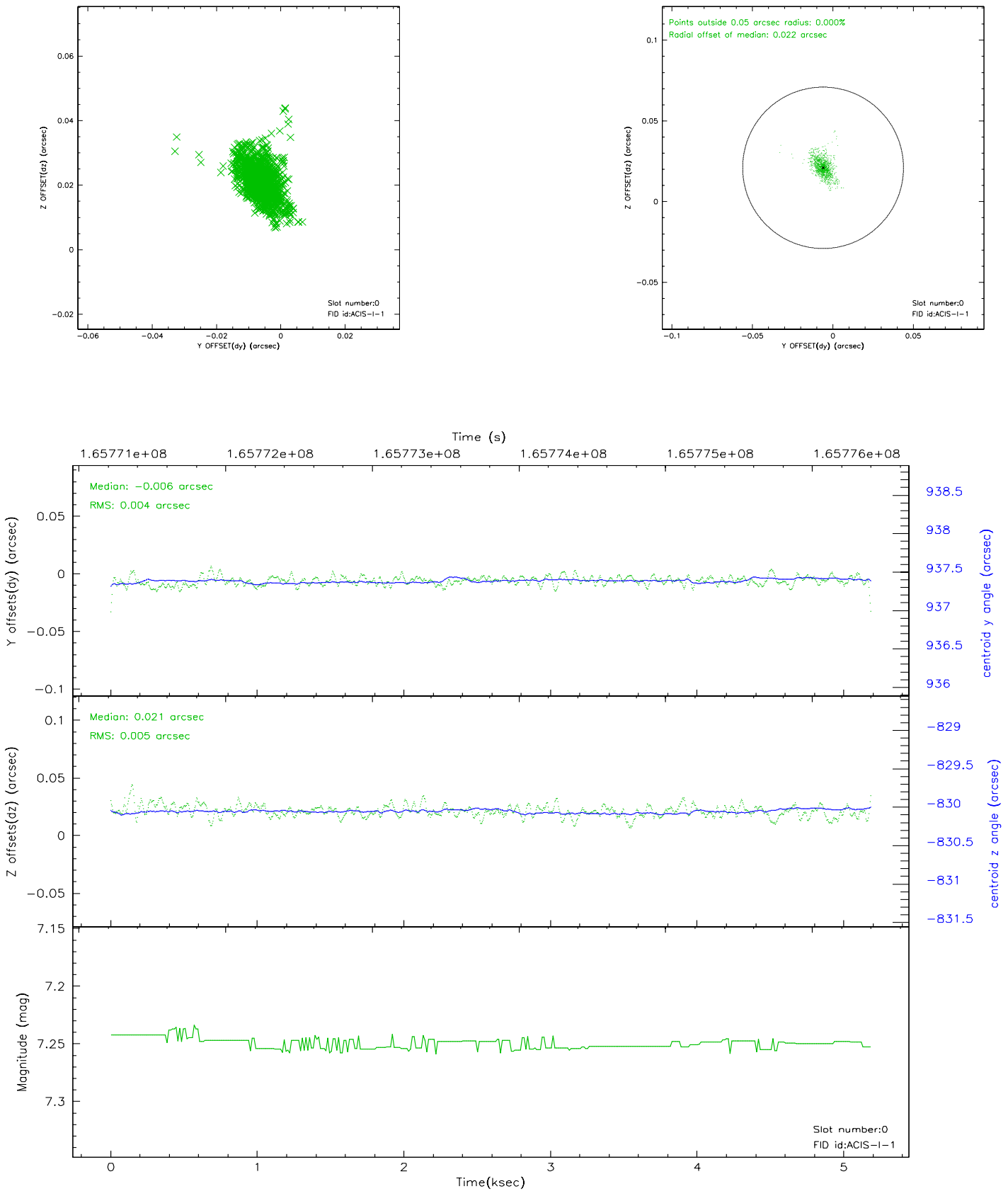


2.4.5 Slot 7

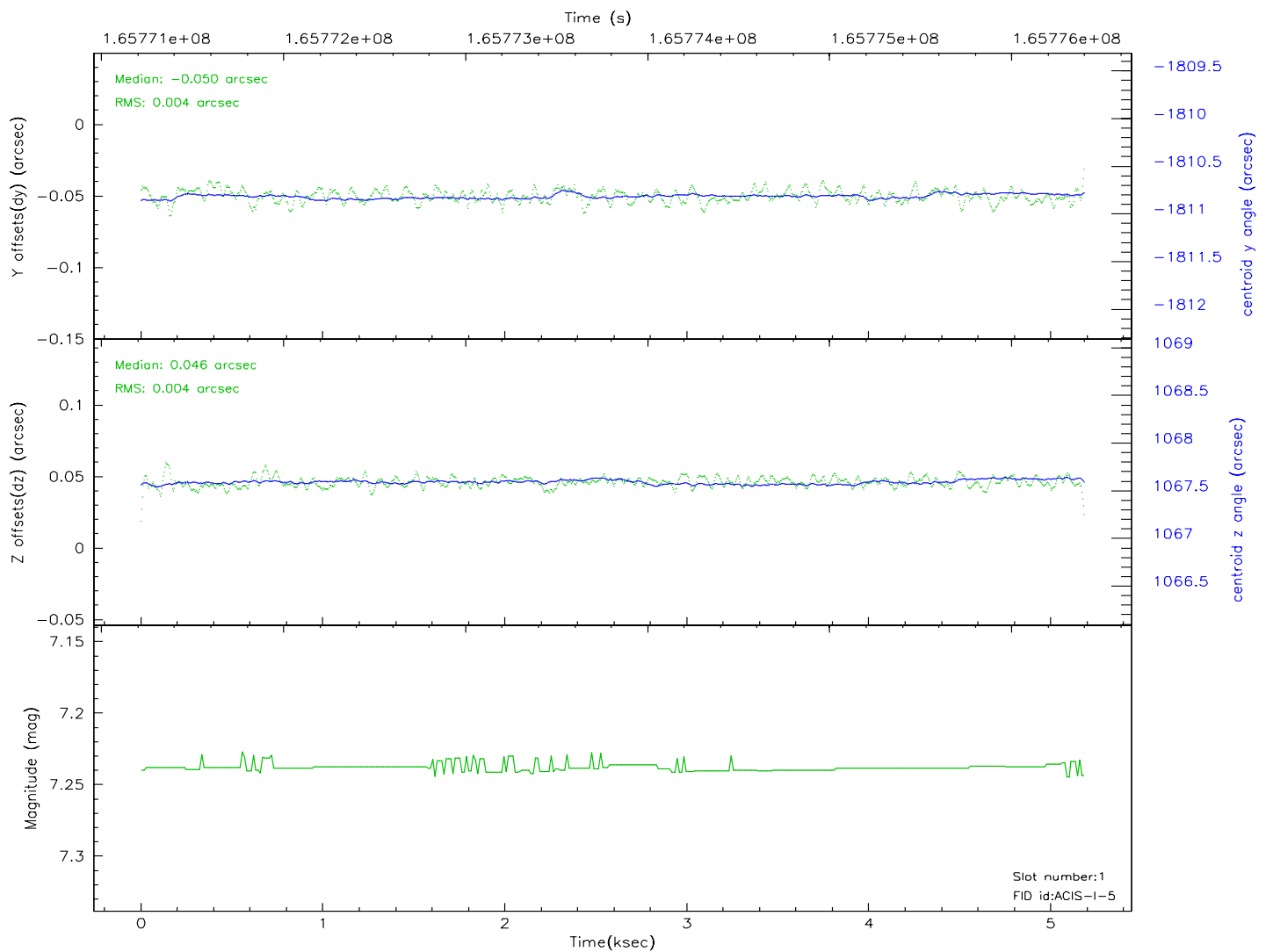
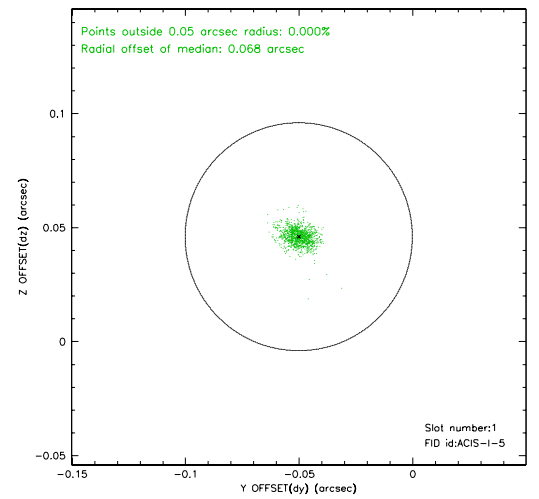
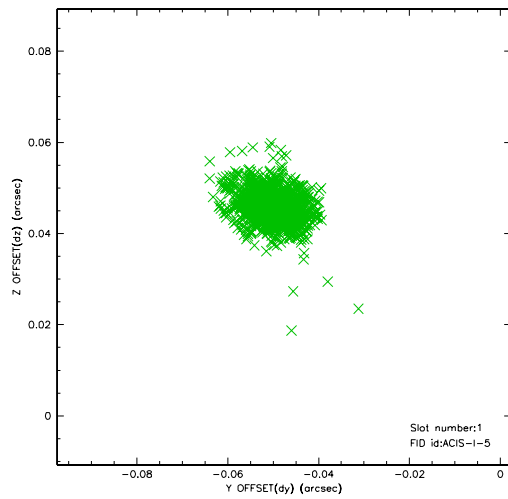


2.5 FID Slots

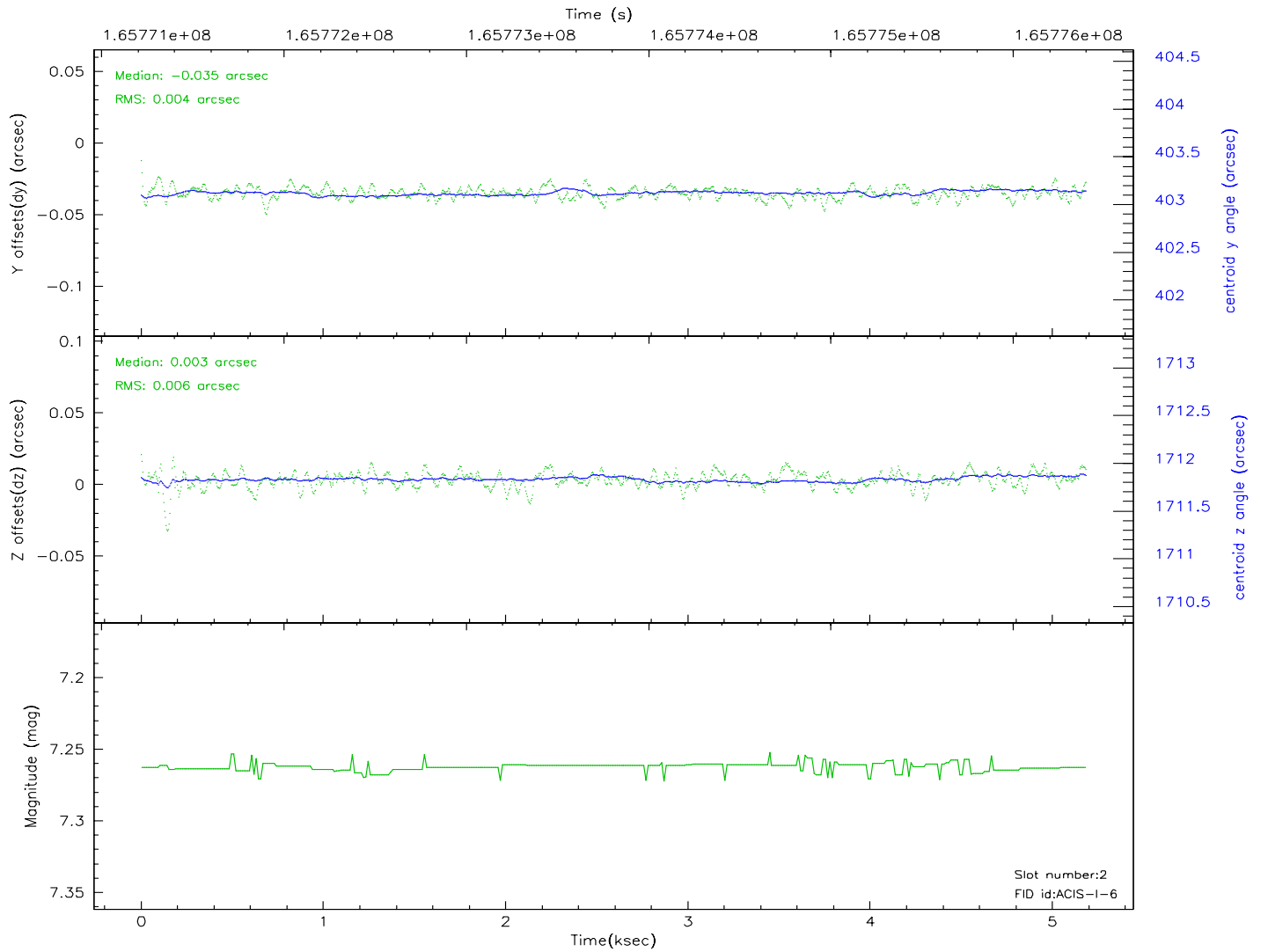
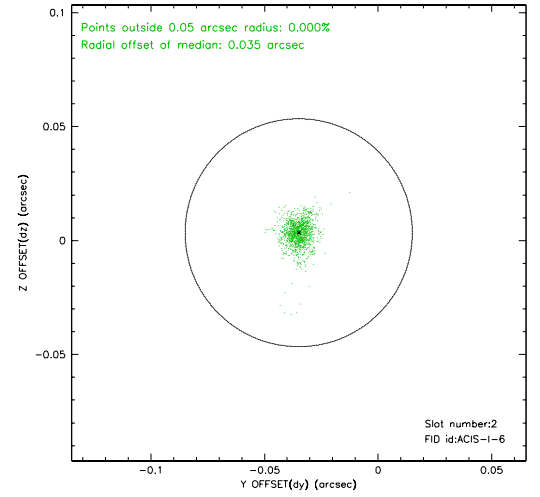
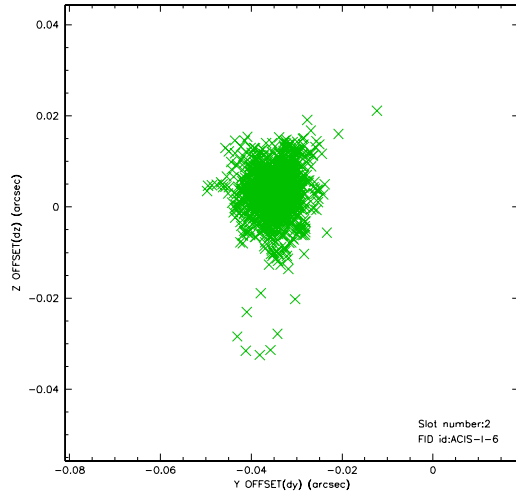
2.5.1 Slot 0



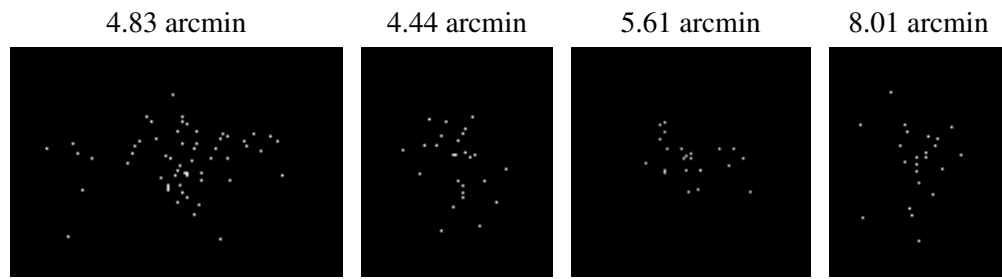
2.5.2 Slot 1



2.5.3 Slot 2



3 Point Sources



A Summary

A.1 Status

V&V Scientist	Jen Lauer
V&V Date (YYYY-MM-DD)	2006.07.30
V&V Edition	1
V&V Disposition and Status	OK
V&V Charge Time	4.777

A.2 Comments