

V&V Reference Report

L2 ASCDS Version : 7.6.8

Observation 3607 - L2 Version 001
Chandra X-Ray Center

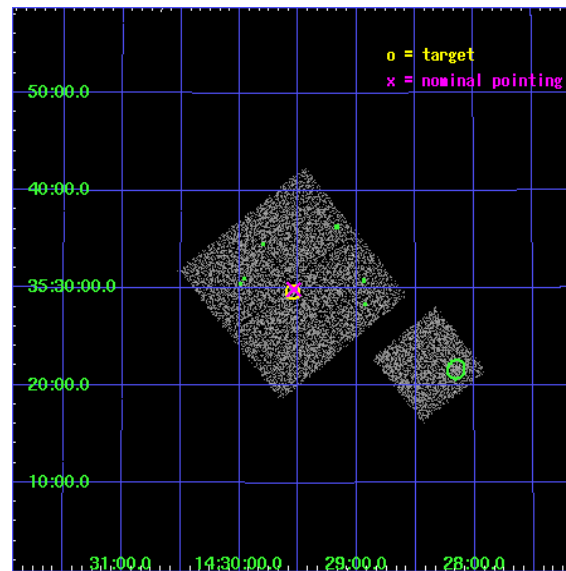
L2 Processing Date : Jul 30 2006

Contents

1	Front	2
2	OBI	3
2.1	OBI	3
2.1.1	Images	3
2.1.2	Bias	3
2.1.3	Parameters	4
2.1.4	Events	4
2.2	Compared Parameters	5
2.3	Aspect	6
2.4	Star Slots	9
2.4.1	Slot 3	9
2.4.2	Slot 4	10
2.4.3	Slot 5	11
2.4.4	Slot 6	12
2.4.5	Slot 7	13
2.5	FID Slots	14
2.5.1	Slot 0	14
2.5.2	Slot 1	15
2.5.3	Slot 2	16
3	Point Sources	17
A	Summary	18
A.1	Status	18
A.2	Comments	18

1 Front

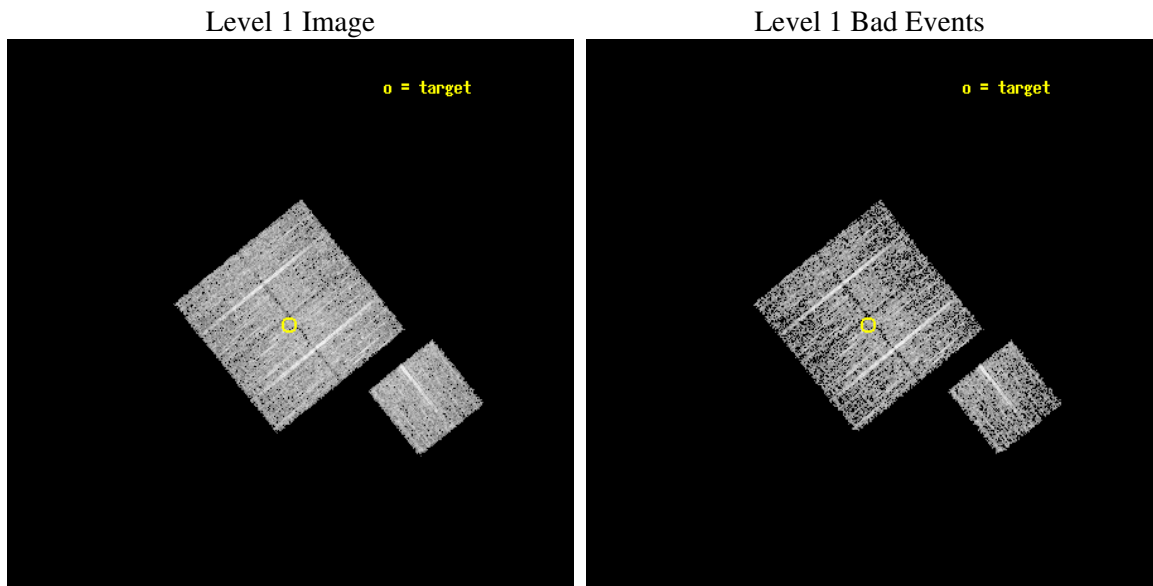
seq_num	900207
obs_id	3607
title	CHANDRA LARGE SCALE SURVEY OF THE NOAO BOOTES DEEP FIELD
observer	Dr. Stephen Murray
object	NOAO FIELD F2
dtcycle	0
cycle	P
ra_targ	217.38708
dec_targ	35.493858
ra_nom	217.38438875495
dec_nom	35.497908111758
roll_nom	141.01024089522
revision	2
ontime	4578.6999911964
livetime	4518.8759050215
ontime0	4578.6999911964
ontime1	4575.5590209663
ontime2	4578.6999911964
ontime3	4578.6999911964
ontime6	4578.6999911964
l2events	14955



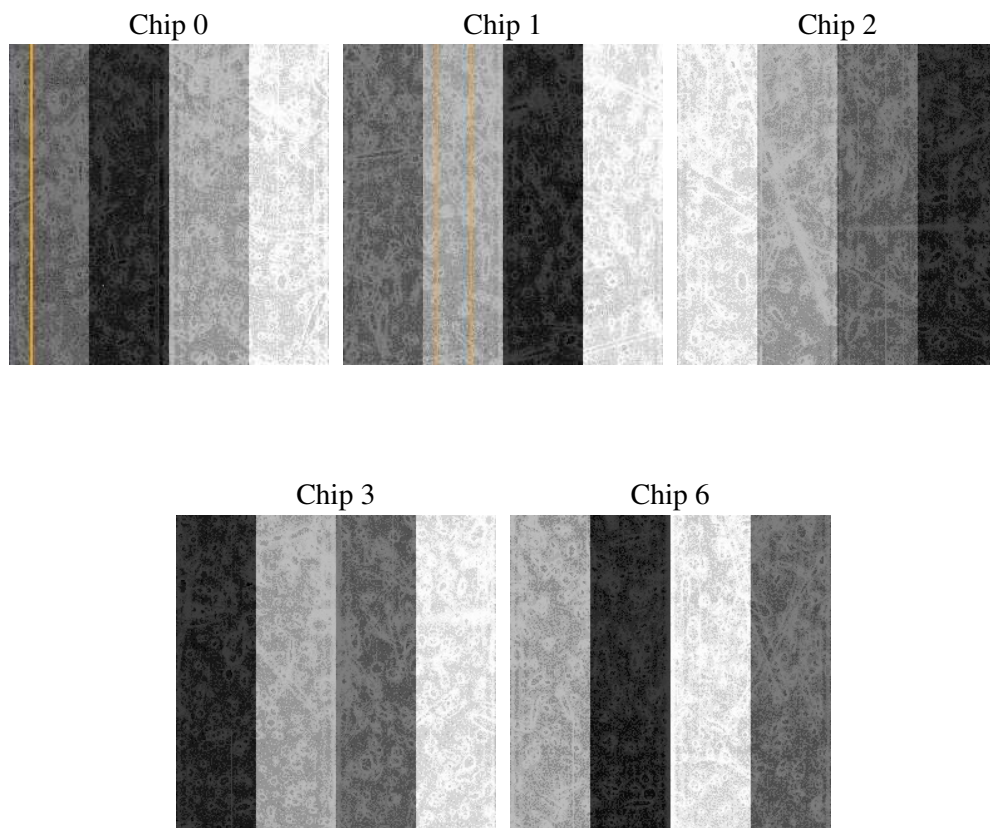
2 OBI

2.1 OBI

2.1.1 Images



2.1.2 Bias



2.1.3 Parameters

obi_num	1
ascdsver	7.6.8
caldsver	3.2.2
date	2006-07-30T08:54:25
revision	2

sched_exp_time	4800.000000
ontime	4582.7247133553
ontime0	4582.7247133553
ontime1	4579.5837431252
ontime2	4582.7247133553
ontime3	4582.7247133553
ontime6	4582.7247133553
l1events	121619

2.1.4 Events

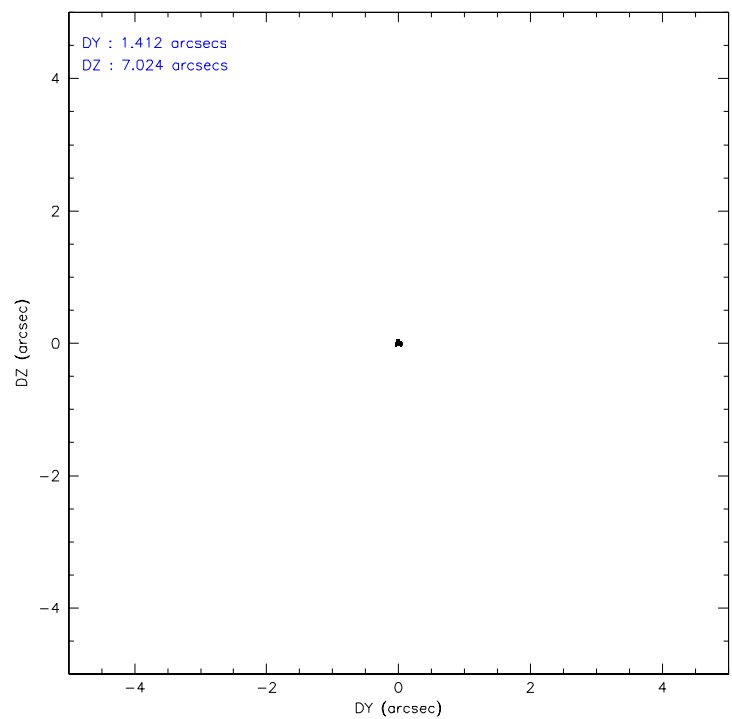
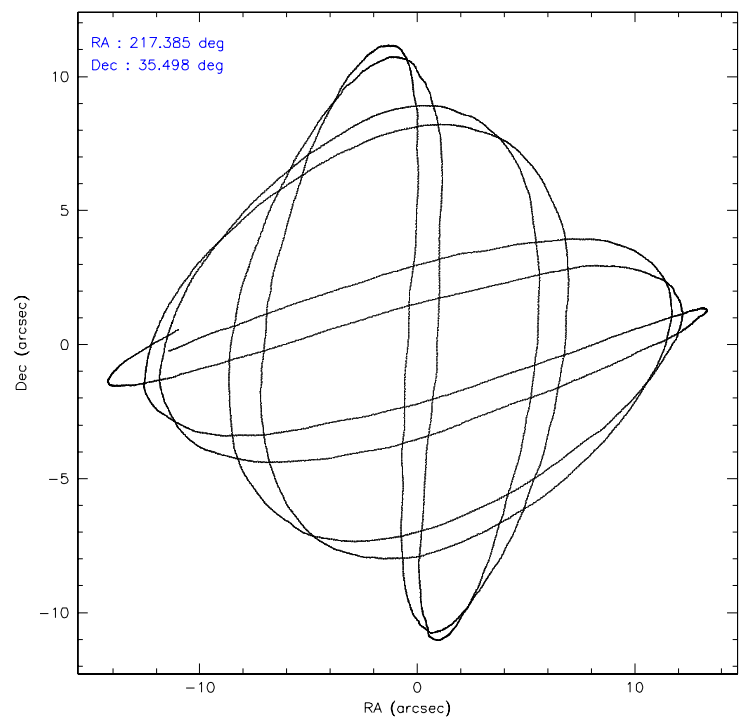
	ccd 0	ccd 1	ccd 2	ccd 3	ccd 6
level 1 events	23037	22765	26680	25027	24110
rejected events	19533	19306	23235	21658	20462
rejected %	84%	84%	87%	86%	84%

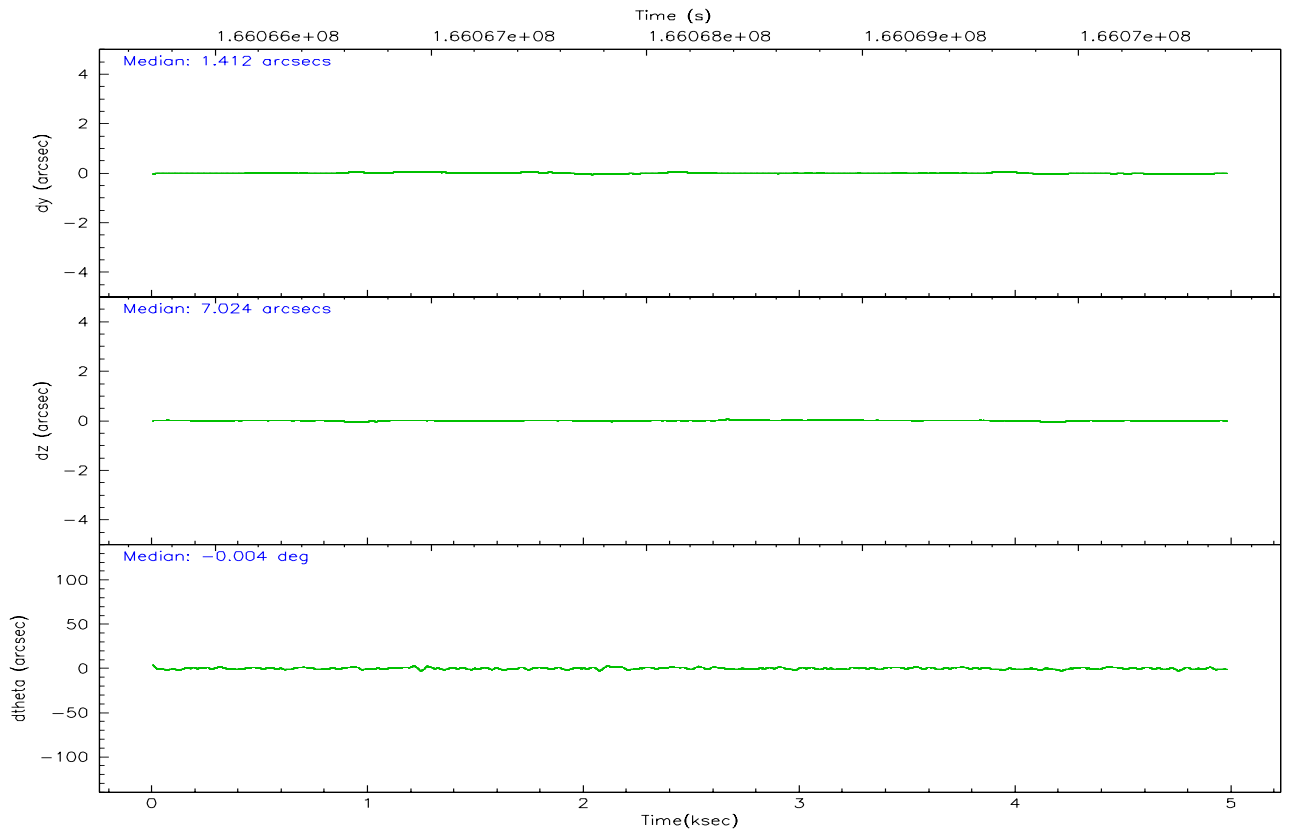
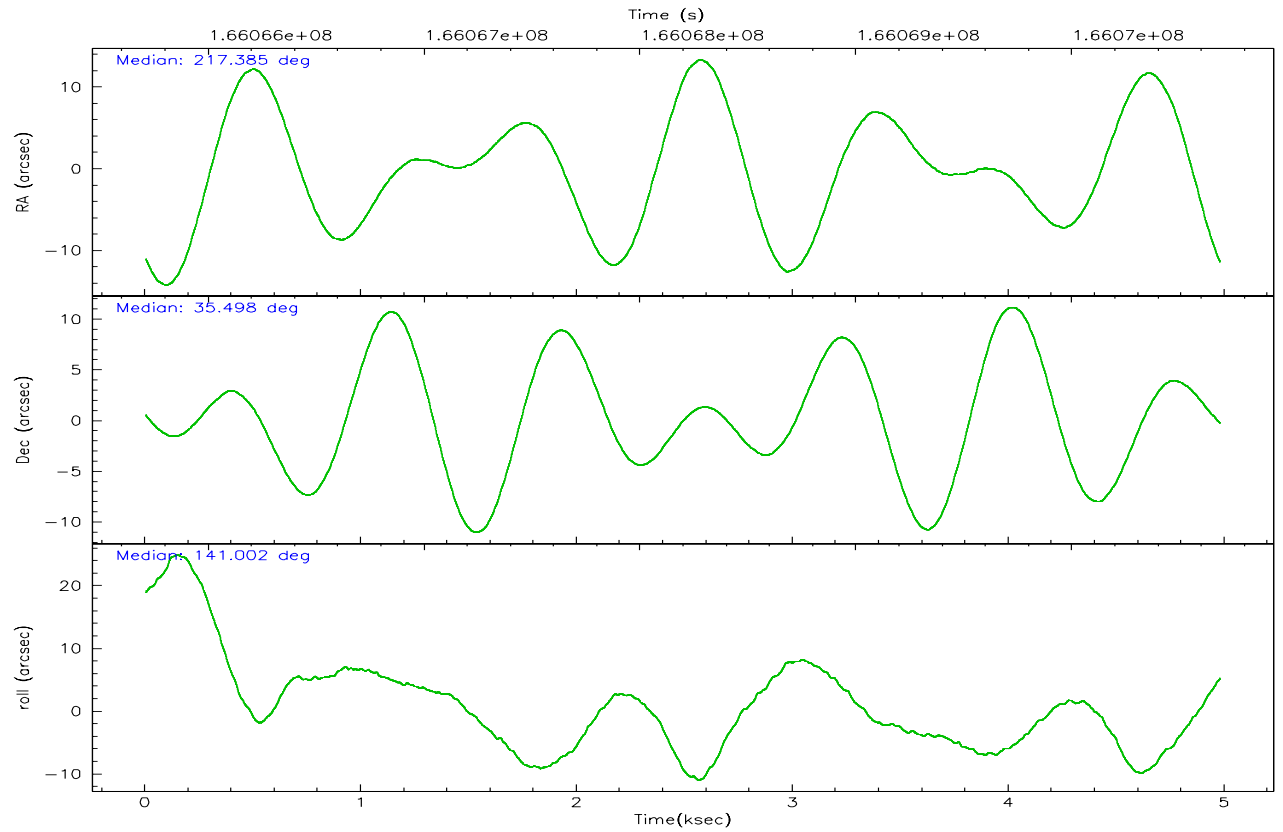
	ccd 0	ccd 1	ccd 2	ccd 3	ccd 6
grade 0 events	1651	1504	1645	1562	1787
	7%	6%	6%	6%	7%
grade 1 events	14	15	13	25	10
	0%	0%	0%	0%	0%
grade 2 events	670	680	697	642	651
	2%	2%	2%	2%	2%
grade 3 events	327	355	316	318	313
	1%	1%	1%	1%	1%
grade 4 events	302	338	294	305	299
	1%	1%	1%	1%	1%
grade 5 events	701	728	656	779	707
	3%	3%	2%	3%	2%
grade 6 events	558	583	495	543	603
	2%	2%	1%	2%	2%
grade 7 events	18814	18562	22564	20853	19740
	81%	81%	84%	83%	81%

2.2 Compared Parameters

Parameter	Planned	Actual	Parameter	Planned	Actual
Instrument	ACIS	ACIS	Obspar format version number	6	6
Detector	ACIS-01236	ACIS-01236	Obspar file type	PREDICTED	ACTUAL
Grating	NONE	NONE	Obspar update status	NONE	UPDATED
Data mode	VFAINT	VFAINT	On-chip summing requested	N	N
Observation mode	POINTING	POINTING	Subarray requested	NONE	NONE
Pointing RA	217.417647	217.3843887549472	Alternating exposures requested	N	N
Pointing Dec	35.493776	35.49790811175816	Primary exposure time	0.000000	3.1
Pointing Roll	140.782255	141.0102408952235			
SIM focus pos (mm)	-0.782348	-0.7809083437167272			
SIM defocus (mm)	0	0.001439871863259334			
SIM translation stage pos (mm)	-233.592463	-233.5874344608287			
SIM translation stage offset (mm)	0	-0.005018542100998502			
Observation start time	166065895.184000	166065519.52842			
Observation start date	2003-04-07T01:23:51	2003-04-07T01:18:39			
Observation end time	166070695.184000	166070829.02864			
Observation end date	2003-04-07T02:43:51	2003-04-07T02:47:09			
Read mode	TIMED	TIMED			

2.3 Aspect



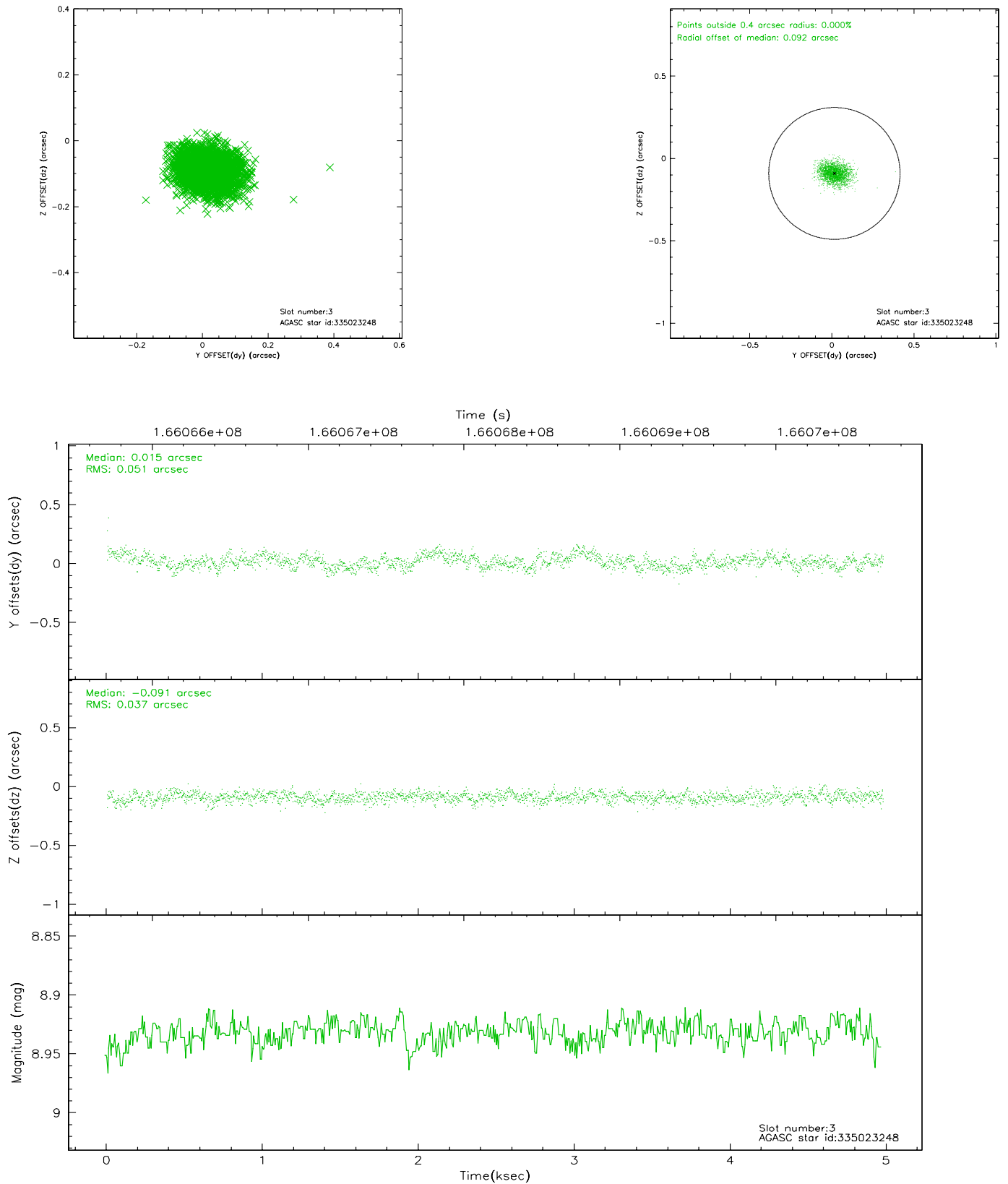


Slot Statistics

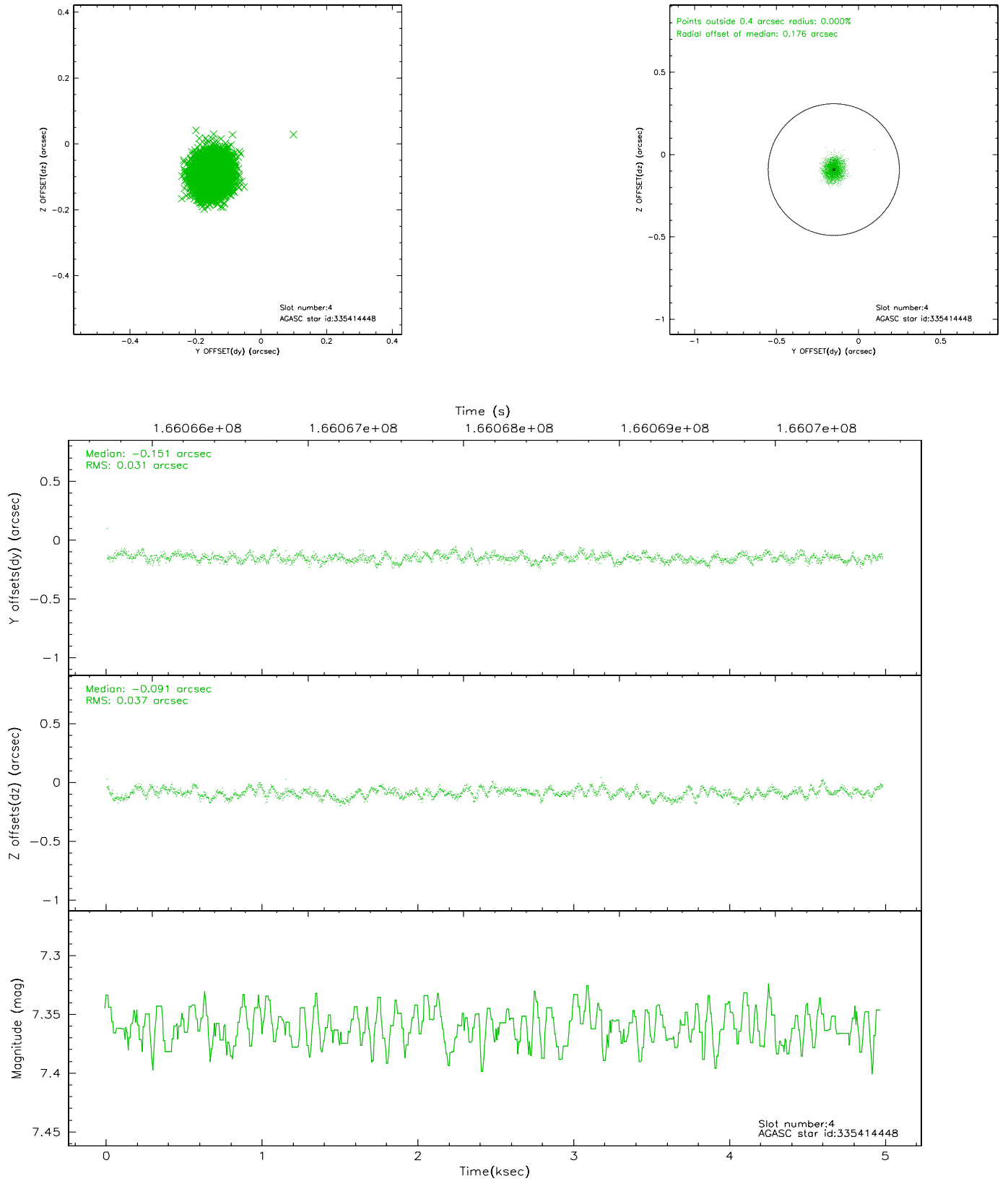
slot	status	id	mag	n_pts	med_dy	med_dz	dr1	dr2	ra	dec	mean_y	mean_z
0	FID	ACIS-I-1	7.25	1214	-0.081	0.007	0.009	0.015	0.000000	0.000000	938.37	-830.39
1	FID	ACIS-I-2	7.16	1214	-0.032	-0.005	0.006	0.010	0.000000	0.000000	-754.98	-837.50
2	FID	ACIS-I-4	7.18	1214	0.015	0.065	0.006	0.010	0.000000	0.000000	2157.75	1068.90
3	GUIDE	335023248	8.93	2429	0.015	-0.091	0.067	0.107	217.634832	34.944512	-1746.28	1125.93
4	GUIDE	335414448	7.36	2424	-0.151	-0.091	0.052	0.080	216.992261	35.577204	1155.46	553.44
5	GUIDE	335417968	9.40	2429	0.054	0.047	0.093	0.156	217.358149	35.055285	-861.67	1334.04
6	GUIDE	335421696	8.95	2429	0.011	0.031	0.076	0.122	218.045699	35.772449	-783.33	-1941.12
7	GUIDE	335422272	9.49	2425	0.066	0.107	0.093	0.154	217.586135	35.522660	-316.42	-393.82

2.4 Star Slots

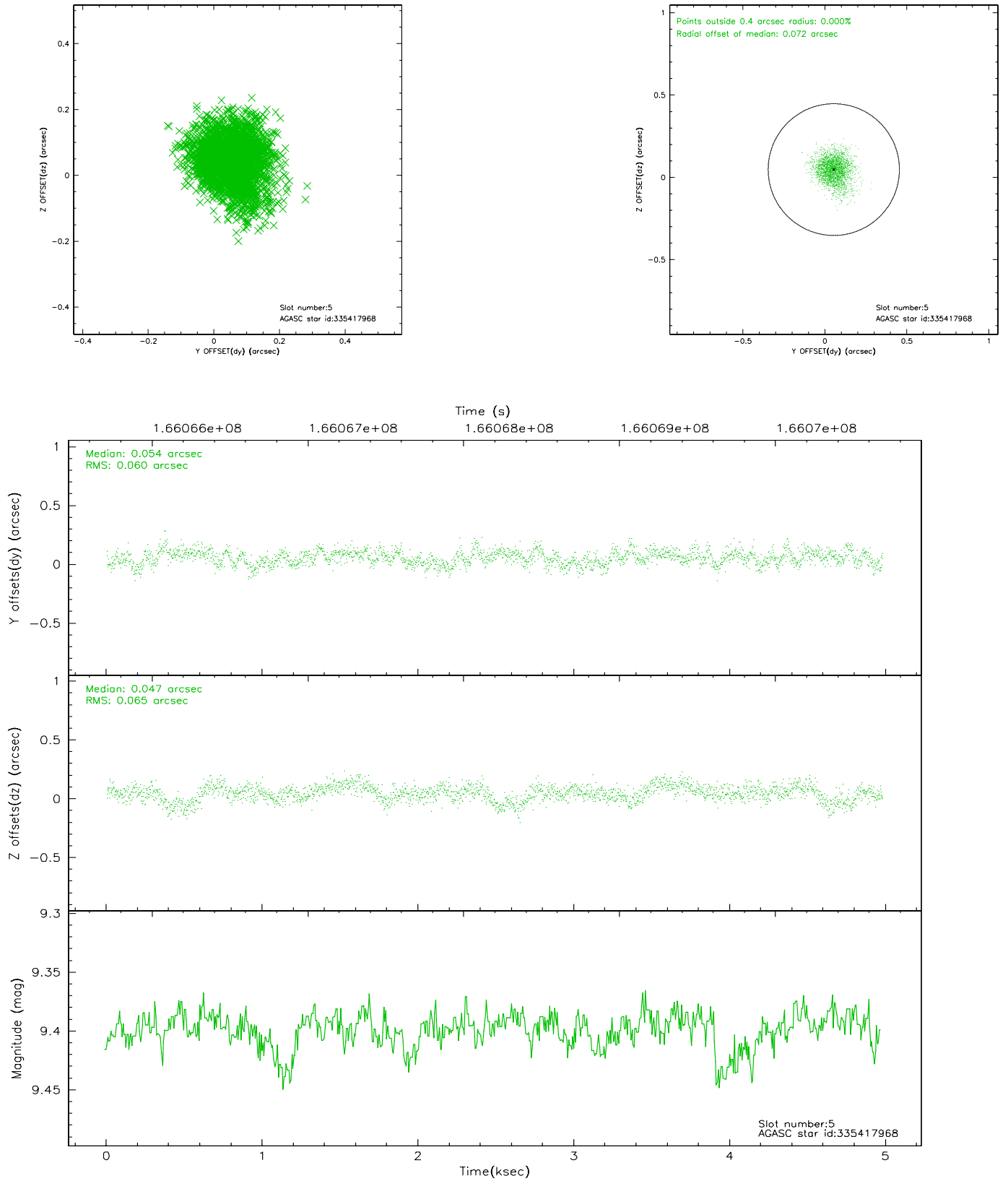
2.4.1 Slot 3



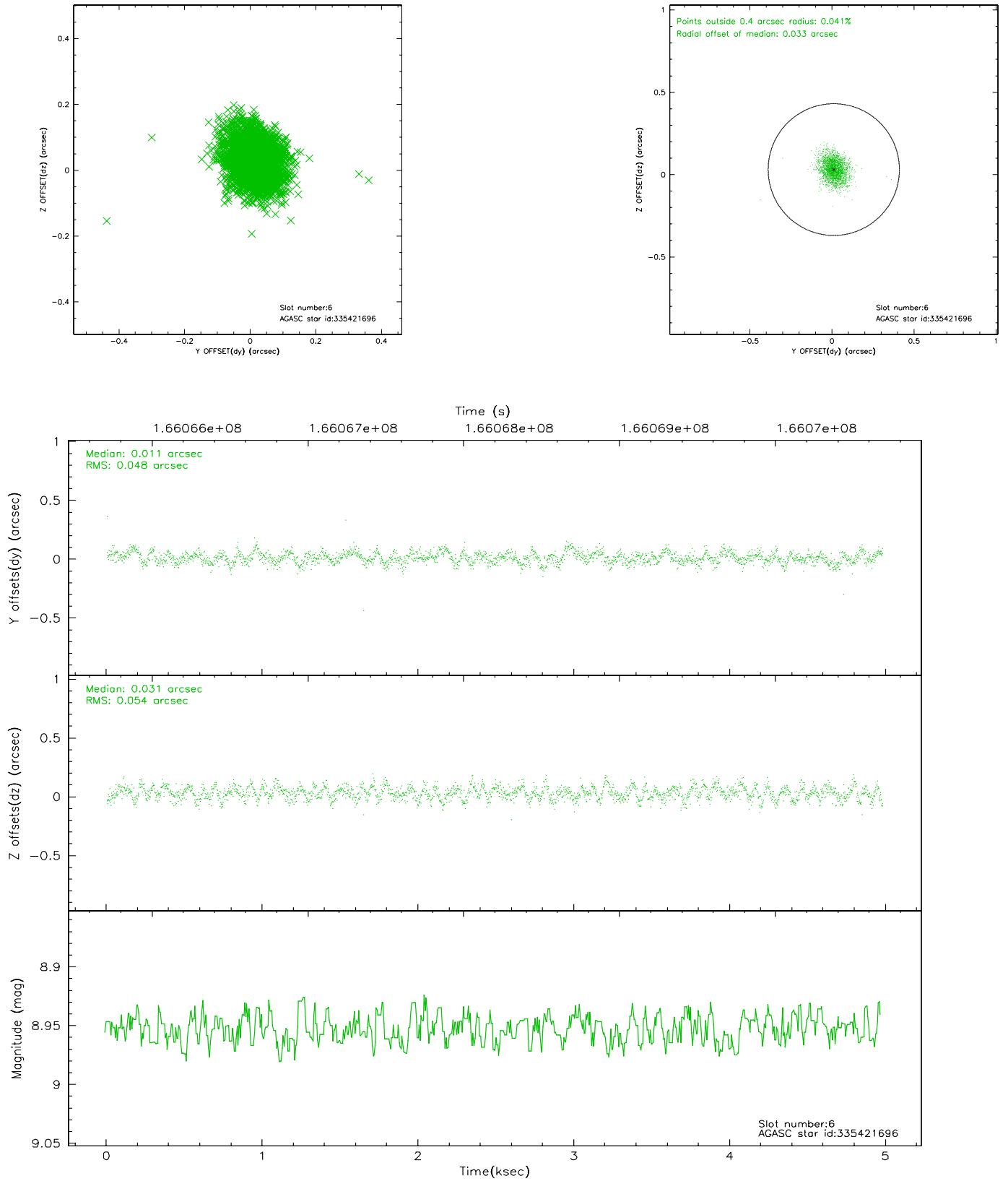
2.4.2 Slot 4



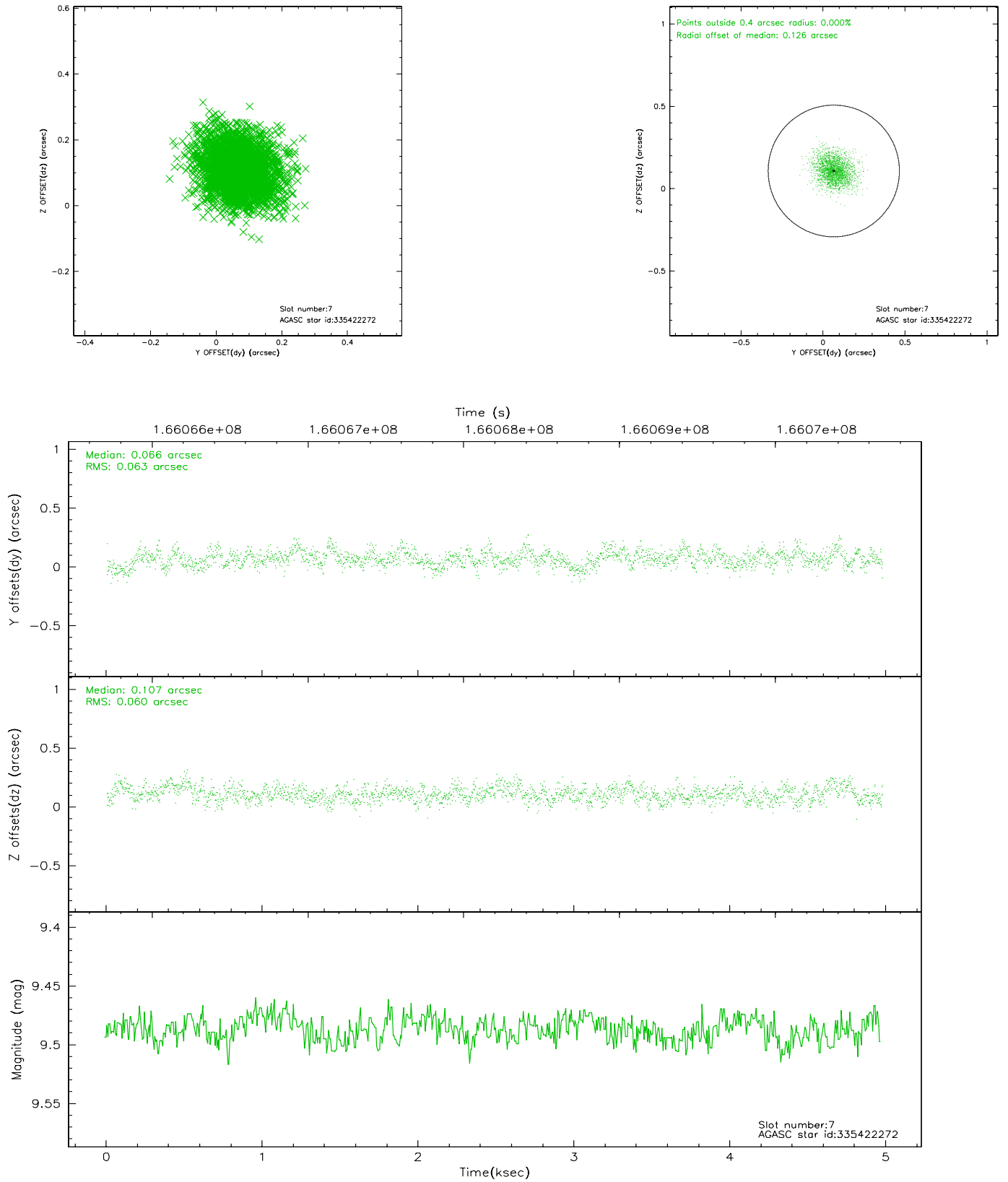
2.4.3 Slot 5



2.4.4 Slot 6

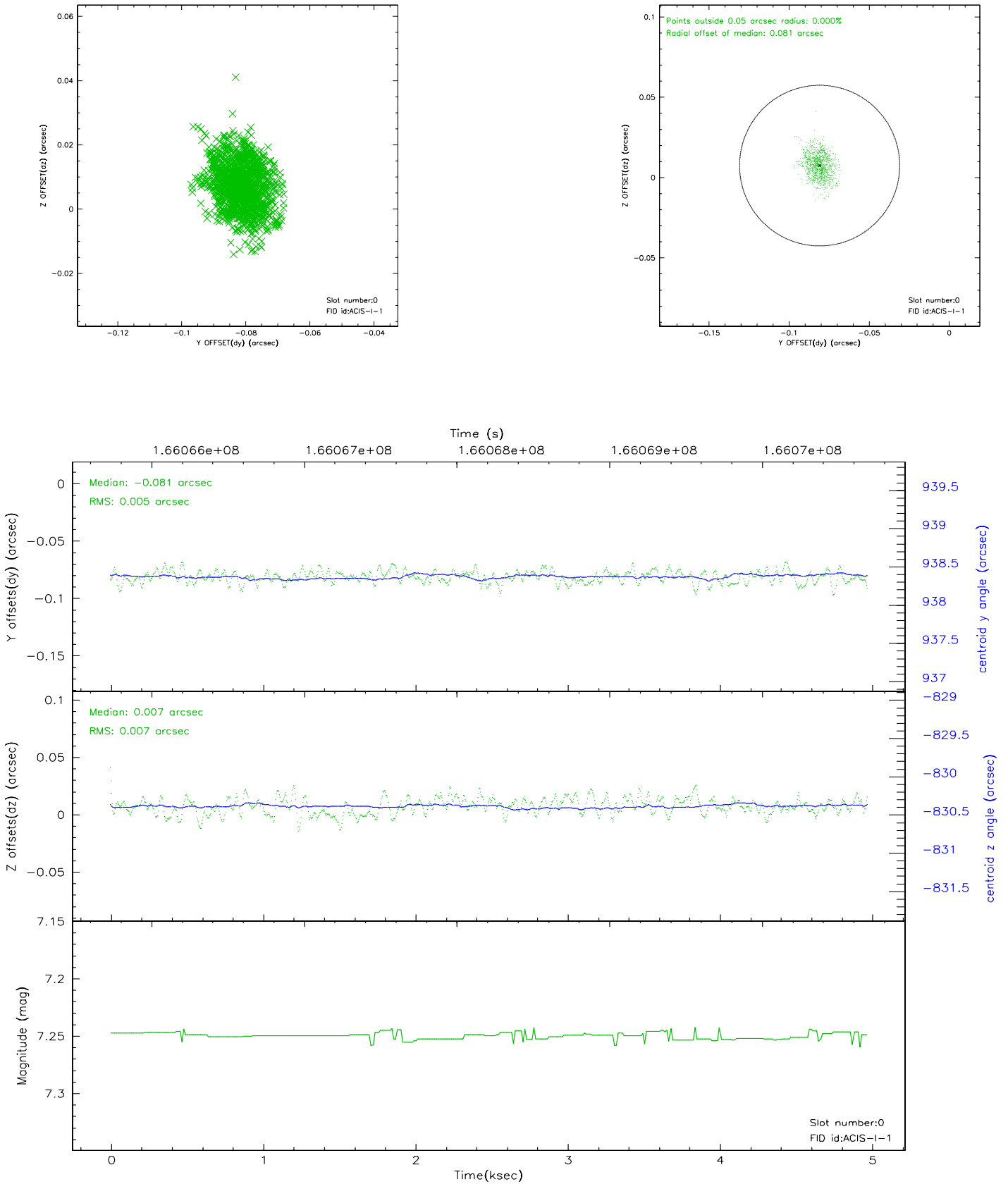


2.4.5 Slot 7

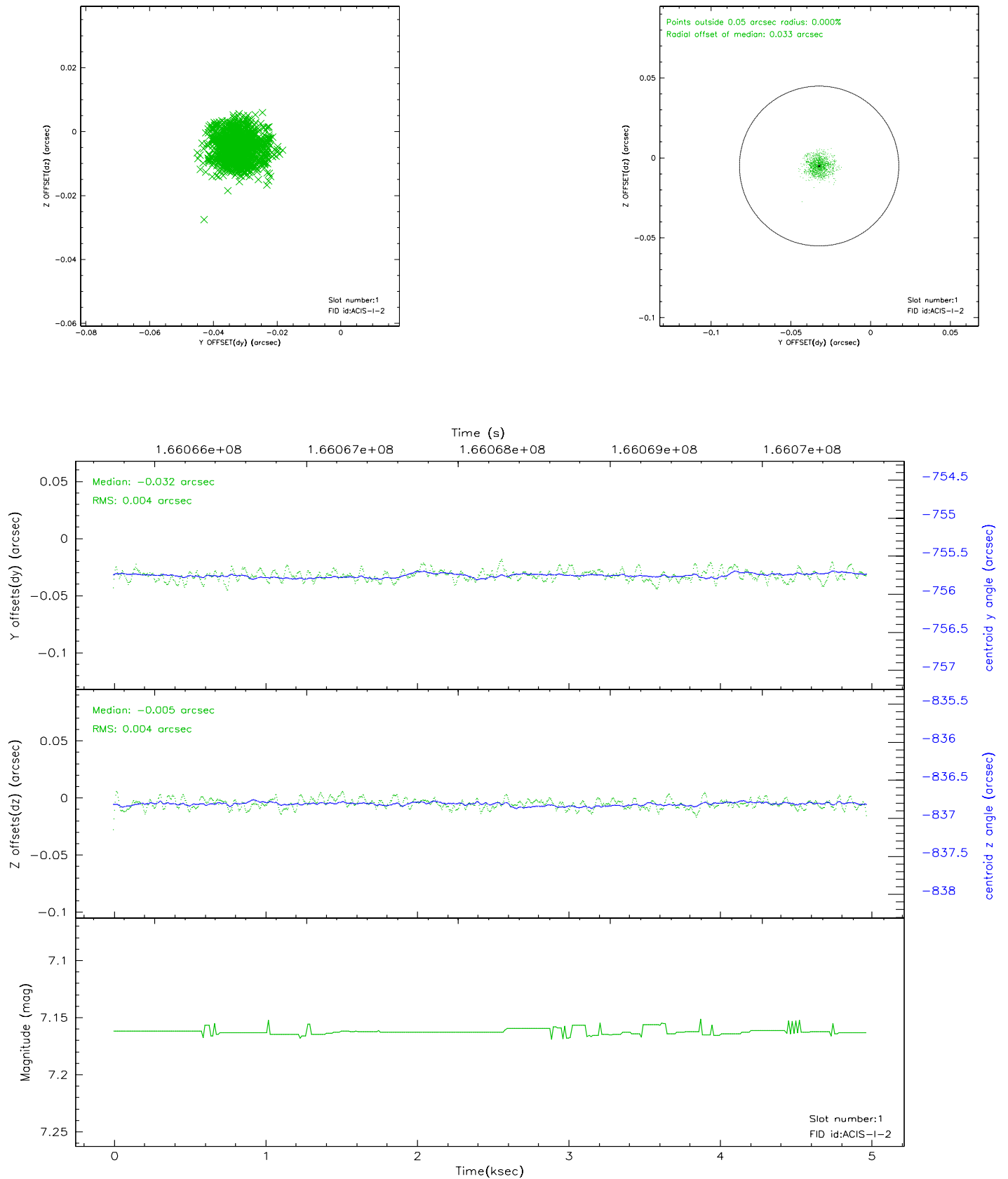


2.5 FID Slots

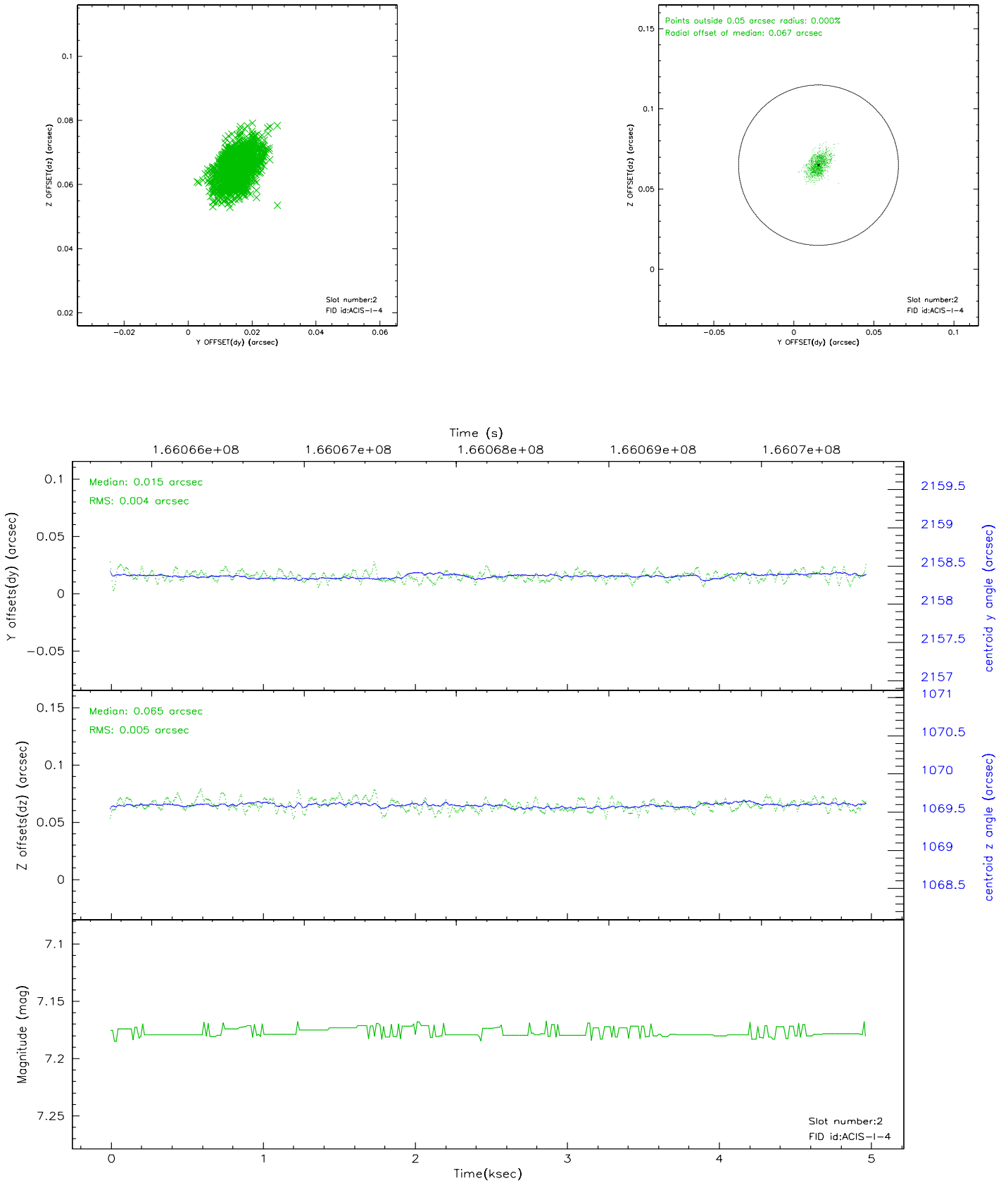
2.5.1 Slot 0



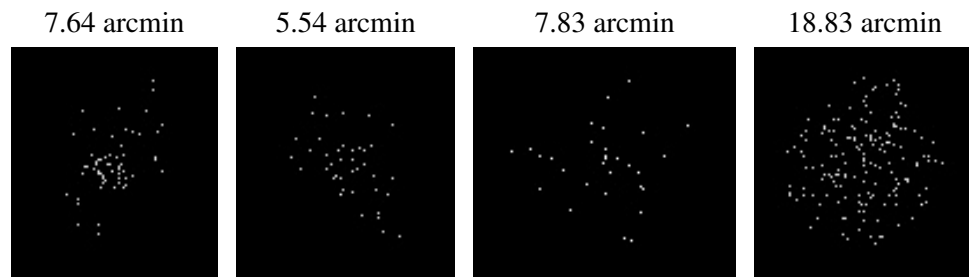
2.5.2 Slot 1



2.5.3 Slot 2



3 Point Sources



A Summary

A.1 Status

V&V Scientist	Jen Lauer
V&V Date (YYYY-MM-DD)	2006.07.30
V&V Edition	1
V&V Disposition and Status	OK
V&V Charge Time	4.579

A.2 Comments