

V&V Reference Report

L2 ASCDS Version : 8.4.5

Observation 3604 - L2 Version 3
Chandra X-Ray Center

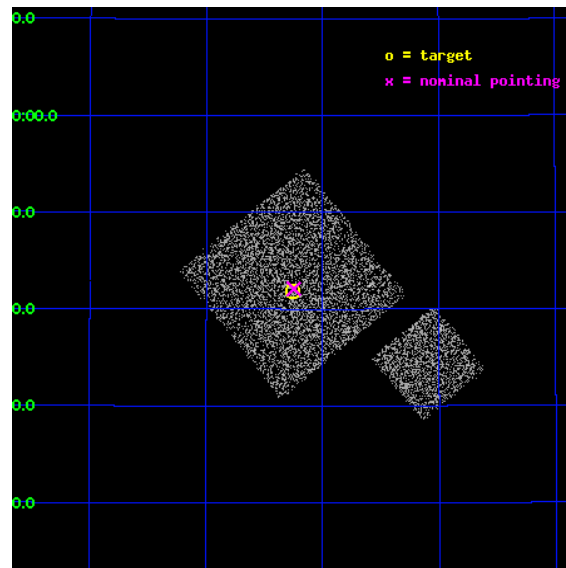
L2 Processing Date : Oct 24 2012

Contents

1	Front	2
2	OBI	3
2.1	OBI	3
2.1.1	Images	3
2.1.2	Bias	3
2.1.3	Parameters	4
2.1.4	Events	4
2.2	Compared Parameters	5
2.3	Aspect	6
2.4	Star Slots	9
2.4.1	Slot 3	9
2.4.2	Slot 4	10
2.4.3	Slot 5	11
2.4.4	Slot 6	12
2.4.5	Slot 7	13
2.5	FID Slots	14
2.5.1	Slot 0	14
2.5.2	Slot 1	15
2.5.3	Slot 2	16
A	Summary	17
A.1	Status	17
A.2	Comments	17

1 Front

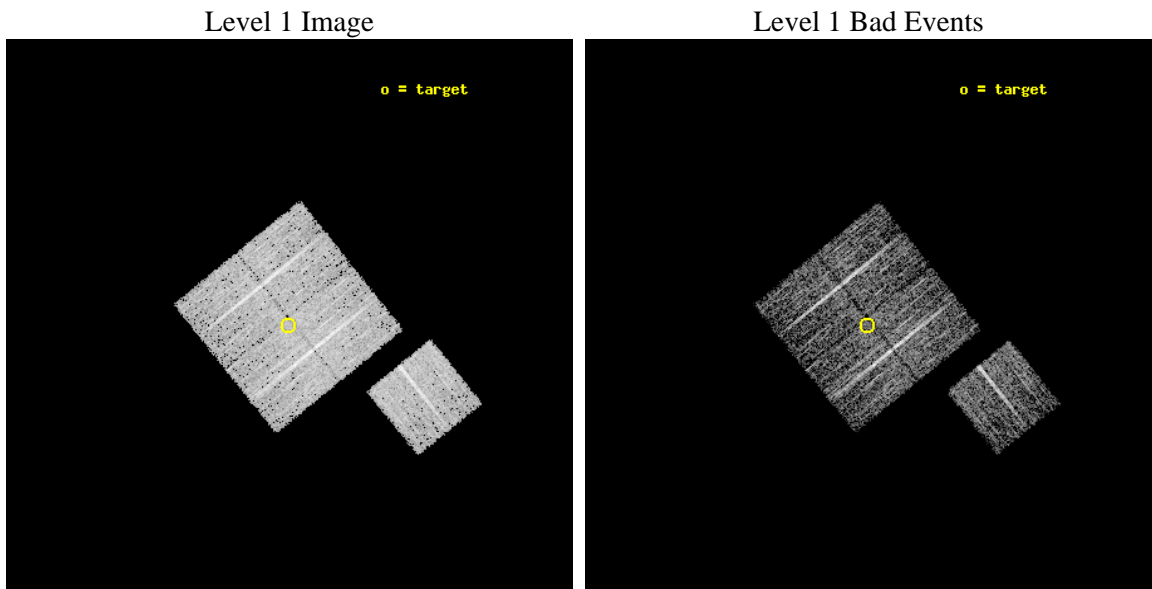
seq_num	900204	Sequence number
obs_id	3604	Observation id
title	CHANDRA LARGE SCALE SURVEY OF THE NOAO BOOTES DEEP FIELD	Proposal
observer	Dr. Stephen Murray	Principal investigator
object	NOAO FIELD F35	Source name
dtcycle	0	
cycle	P	events from which exps? Prim/Second/Both
ra_targ	216.314346	Observer's specified target RA [deg]
dec_targ	35.697552	Observer's specified target Dec [deg]
ra_nom	216.31160395059	Nominal RA [deg]
dec_nom	35.701611261994	Nominal Dec [deg]
roll_nom	141.01037794546	Nominal Roll [deg]
revision	3	Processing version of data
ontime	5105.6590199172	Sum of GTIs [s]
livetime	5038.9498260905	Livetime [s]
ontime0	5108.7999901474	Sum of GTIs [s]
ontime1	5105.6590199172	Sum of GTIs [s]
ontime2	5108.7999901474	Sum of GTIs [s]
ontime3	5105.6590199172	Sum of GTIs [s]
ontime6	5105.6590098739	Sum of GTIs [s]
l2events	10147	Number of level 2 events



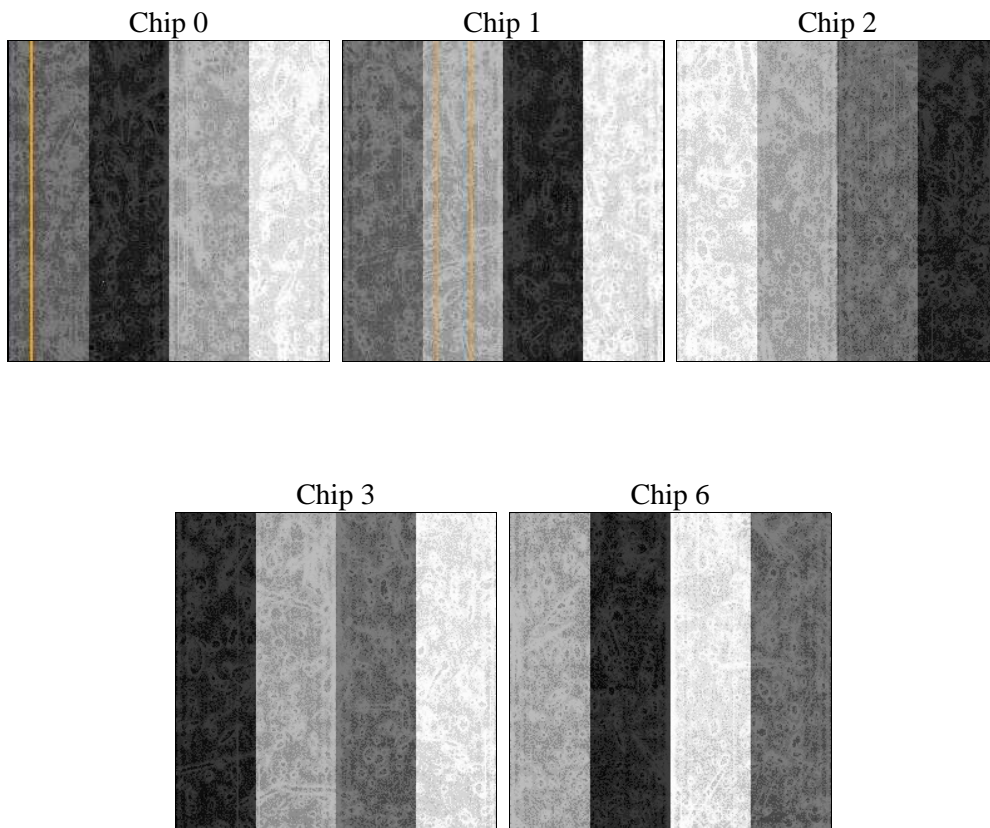
2 OBI

2.1 OBI

2.1.1 Images



2.1.2 Bias



2.1.3 Parameters

obi_num	0	Obi number	sched_exp_time	5000.000000	[s] Scheduled observation exposure time
ascdsver	8.4.5	Processing system revision	ontime	5105.6590199172	Sum of GTIs [s]
caldbver	4.5.2	 	ontime0	5108.7999901474	Sum of GTIs [s]
date	2012-10-24T20:51:02	Date and time of file creation	ontime1	5105.6590199172	Sum of GTIs [s]
revision	3	Processing version of data	ontime2	5108.7999901474	Sum of GTIs [s]
			ontime3	5105.6590199172	Sum of GTIs [s]
			ontime6	5105.6590098739	Sum of GTIs [s]
			l1events	132348	Number of level 1 events

2.1.4 Events

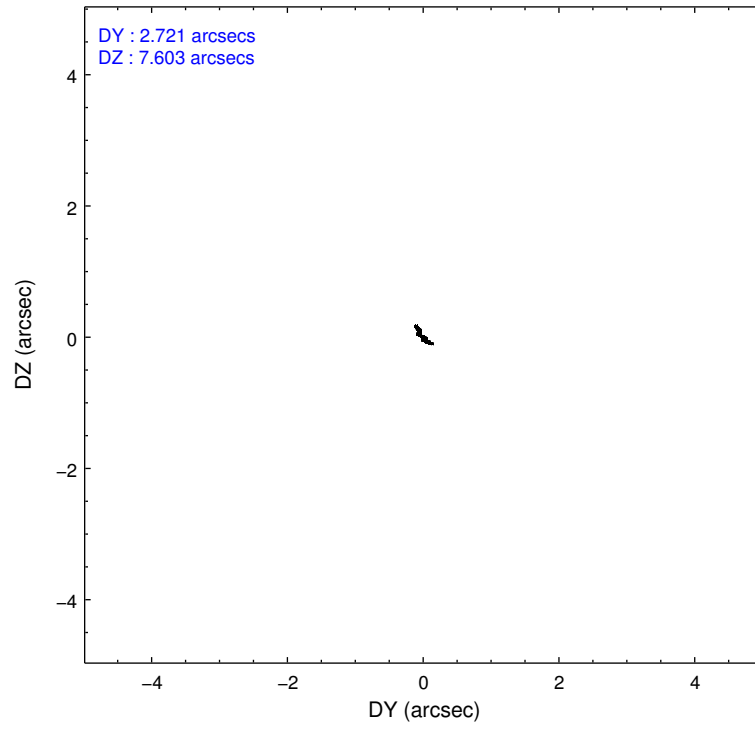
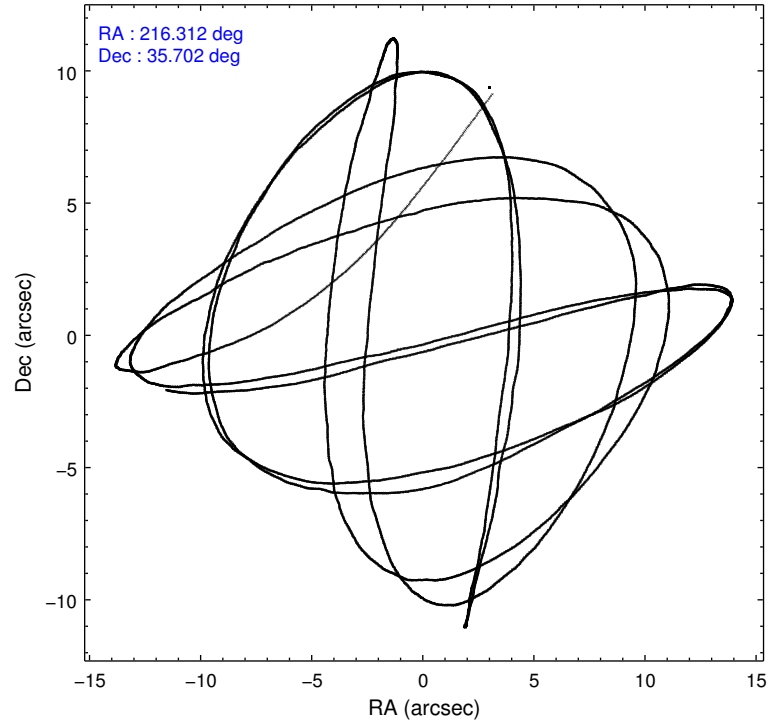
	ccd 0	ccd 1	ccd 2	ccd 3	ccd 6
level 1 events	25876	24272	28449	27171	26580
rejected events	23399	21698	25904	24863	23977
rejected %	90%	89%	91%	91%	90%

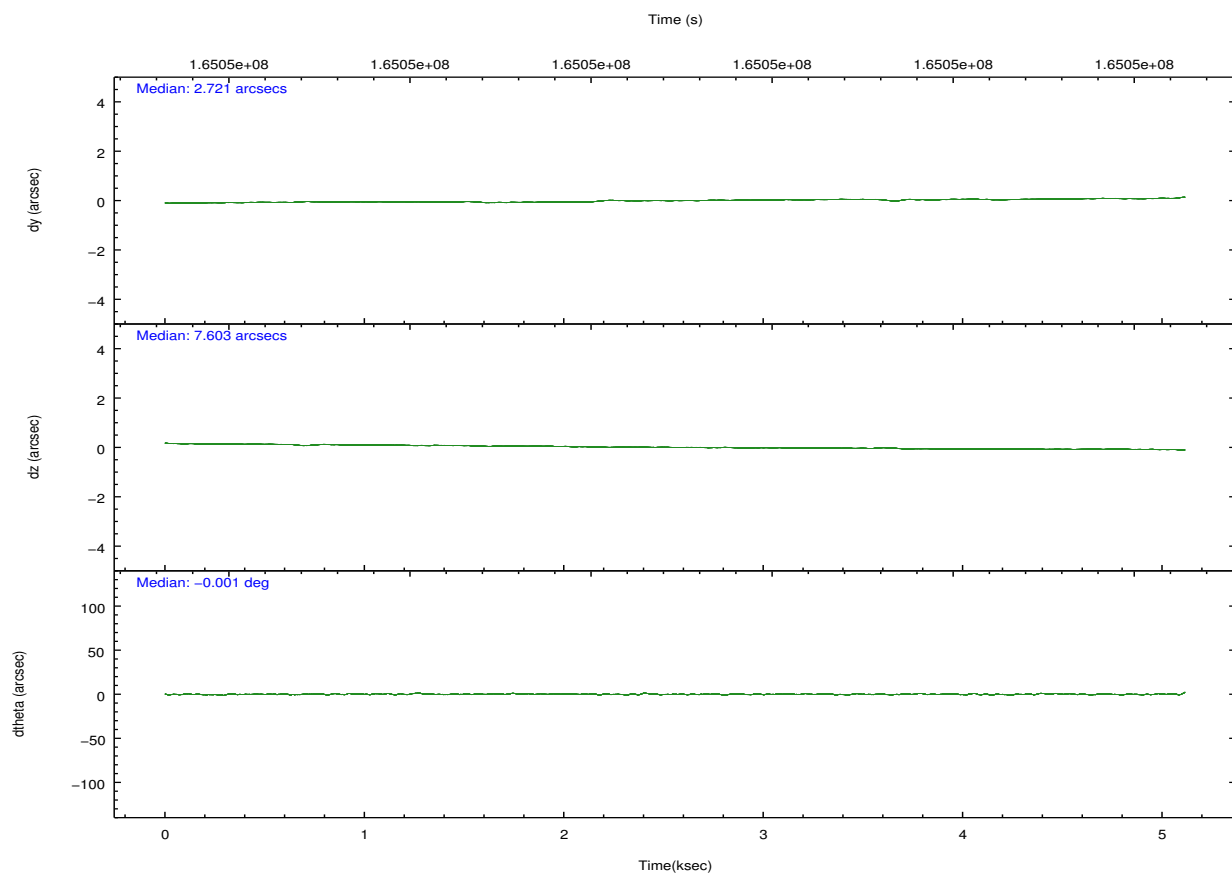
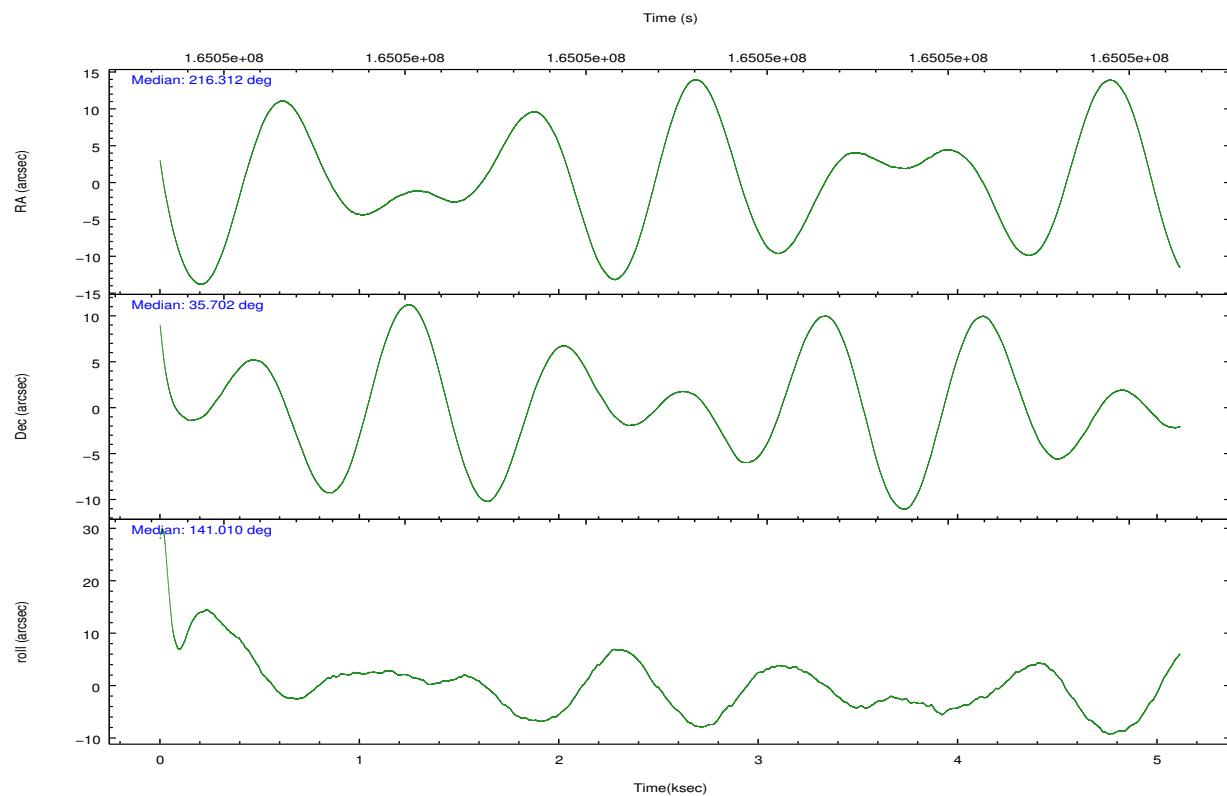
	ccd 0	ccd 1	ccd 2	ccd 3	ccd 6
grade 0 events	919	889	993	849	984
	3%	3%	3%	3%	3%
grade 1 events	7	12	11	14	6
	0%	0%	0%	0%	0%
grade 2 events	577	553	618	507	569
	2%	2%	2%	1%	2%
grade 3 events	314	330	275	279	306
	1%	1%	0%	1%	1%
grade 4 events	300	334	303	285	323
	1%	1%	1%	1%	1%
grade 5 events	797	804	745	900	855
	3%	3%	2%	3%	3%
grade 6 events	446	564	439	448	504
	1%	2%	1%	1%	1%
grade 7 events	22516	20786	25065	23889	23033
	87%	85%	88%	87%	86%

2.2 Compared Parameters

Parameter	Planned	Actual	Parameter	Planned	Actual
Instrument	ACIS	ACIS	Obspar format version number	7	7
Detector	ACIS-01236	ACIS-01236	Obspar file type	PREDICTED	ACTUAL
Grating	NONE	NONE	Obspar update status	NONE	UPDATED
Data mode	VFAINT	VFAINT	Number of optional ACIS chips dropped	0	0
Observation mode	POINTING	POINTING	On-chip summing requested	N	N
[deg] Pointing RA	216.344986	216.3116039505939	Subarray requested	NONE	NONE
[deg] Pointing Dec	35.697478	35.70161126199377	Alternating exposures requested	N	N
[deg] Pointing Roll	140.782125	141.0103779454616	[s] Primary exposure time	0.000000	3.1
[mm] SIM focus pos	-0.782348	-0.7809083437167272			
[mm] SIM defocus	0	0.001439871863259334			
[mm] SIM translation stage pos	-233.592463	-233.5874344608287			
[mm] SIM translation stage offset	0	-0.005018542100998502			
[s] Observation start time (MET)	165046019.184000	165044986.94787			
Observation start date	2003-03-26T06:05:55	2003-03-26T05:49:46			
[s] Observation end time (MET)	165051019.184000	165051153.86063			
Observation end date	2003-03-26T07:29:15	2003-03-26T07:32:33			
Read mode	TIMED	TIMED			

2.3 Aspect



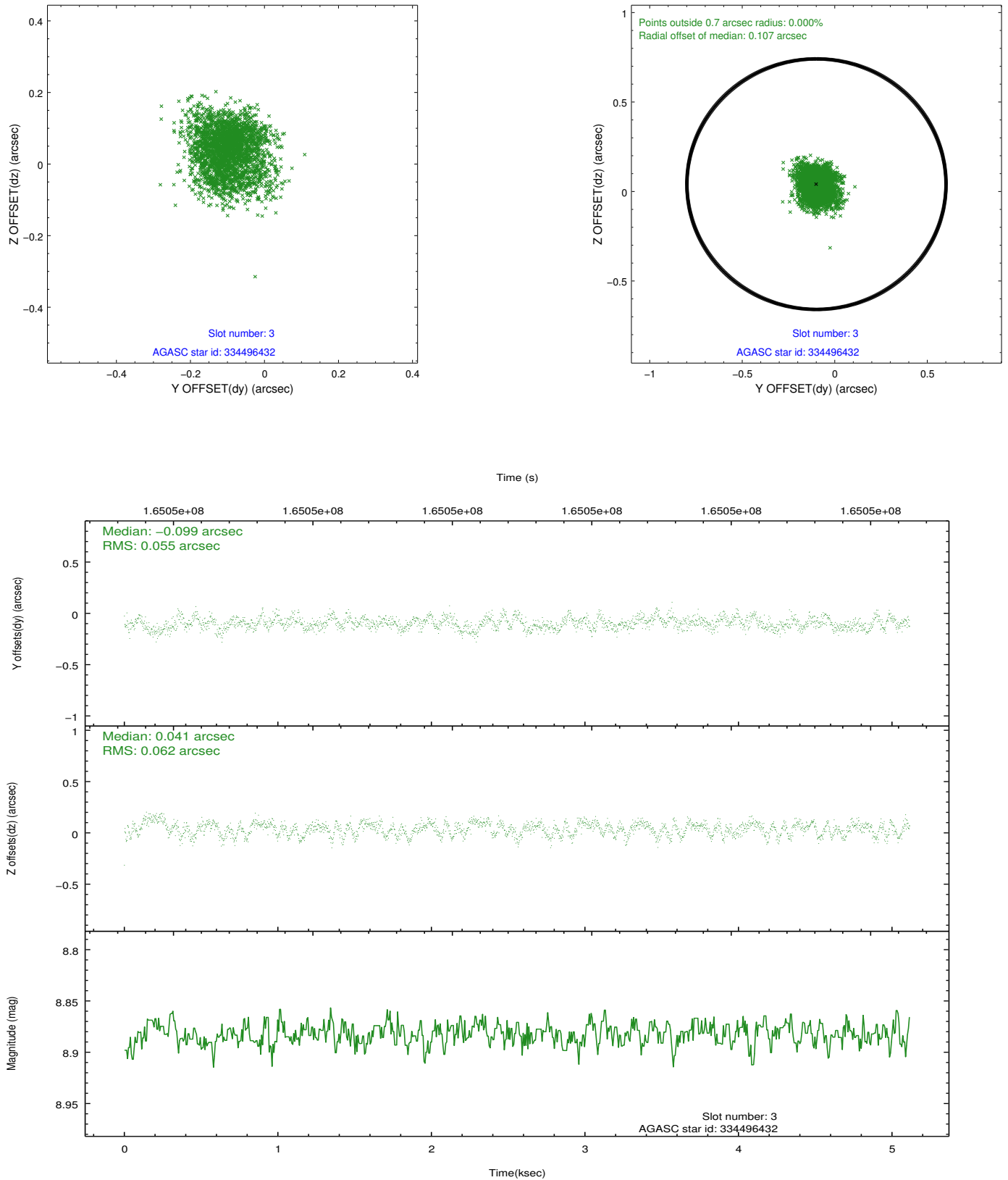


Slot Statistics

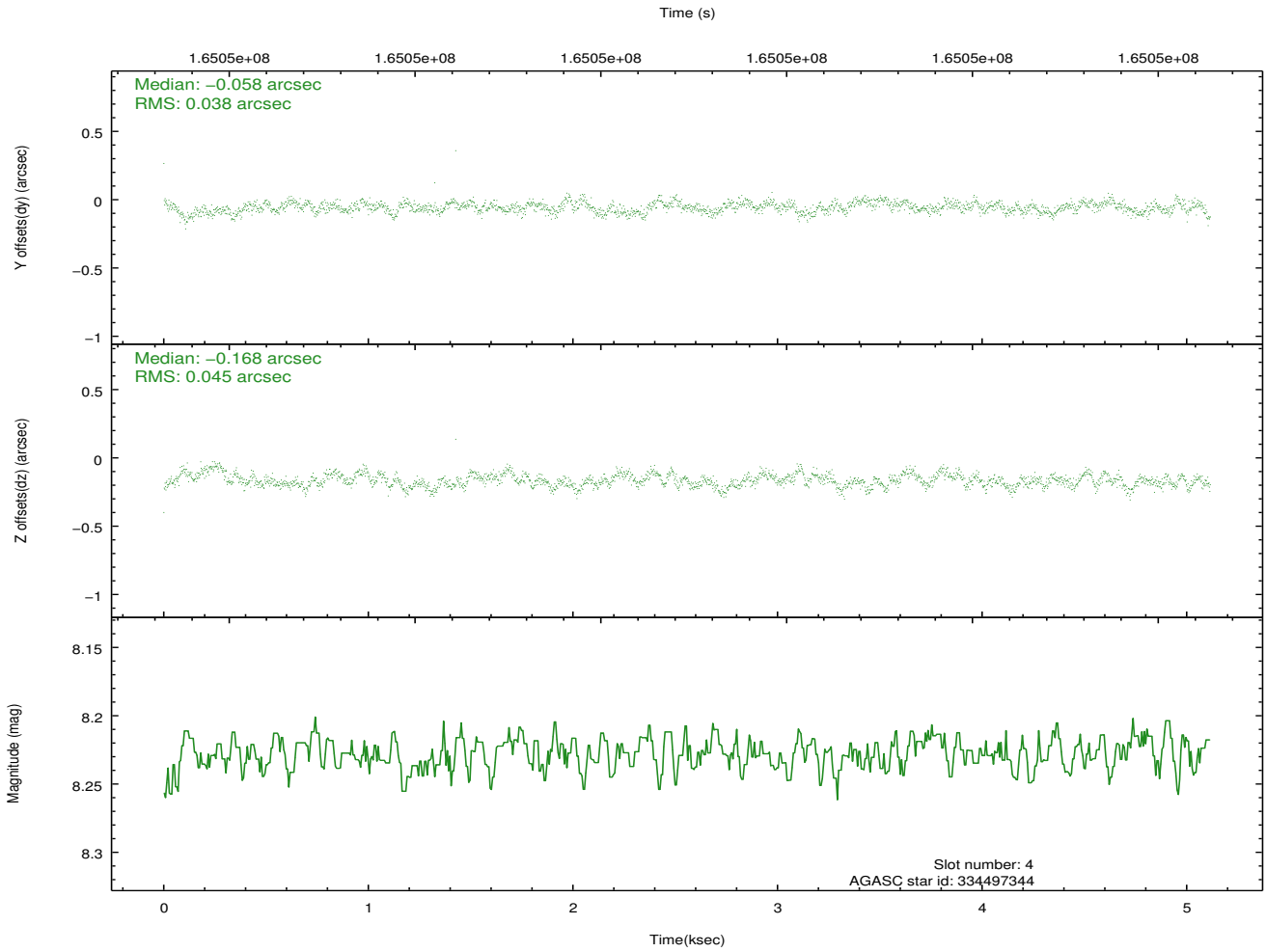
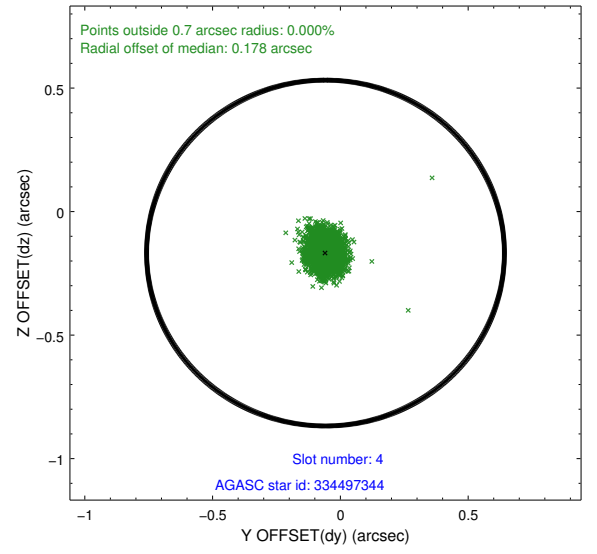
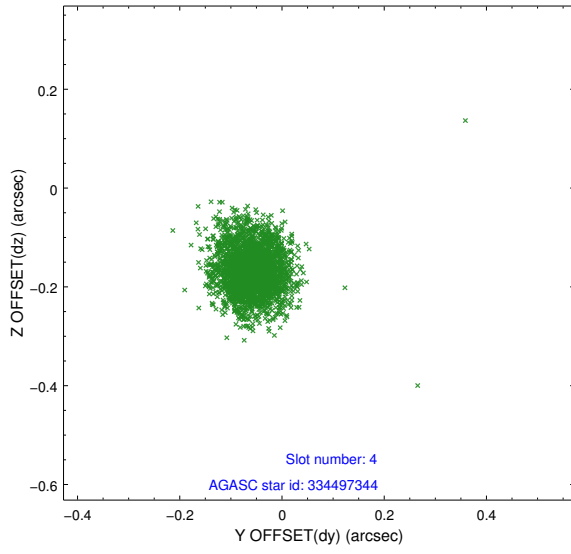
slot	status	id	mag	n_pts	med_dy	med_dz	dr1	dr2	ra	dec	mean_y	mean_z
0	FID	ACIS-I-1	7.25	1248	0.005	0.026	0.007	0.014	0.000000	0.000000	937.07	-831.01
1	FID	ACIS-I-5	7.24	1248	-0.077	0.052	0.007	0.011	0.000000	0.000000	-1810.42	1065.95
2	FID	ACIS-I-6	7.26	1248	-0.019	-0.007	0.007	0.011	0.000000	0.000000	401.35	1711.71
3	GUIDE	334496432	8.88	2496	-0.099	0.041	0.088	0.143	215.867635	36.250052	2334.06	-667.25
4	GUIDE	334497344	8.23	2496	-0.058	-0.168	0.061	0.101	215.557968	35.648808	1679.86	1583.68
5	GUIDE	335414448	7.36	2496	-0.084	0.021	0.070	0.116	216.992261	35.577204	-1737.65	-866.98
6	GUIDE	335417648	10.43	2470	0.063	0.098	0.147	0.241	216.000046	36.018960	1510.55	-263.32
7	GUIDE	335419120	9.65	2494	0.179	0.012	0.102	0.176	216.521861	35.833546	-88.91	-706.40

2.4 Star Slots

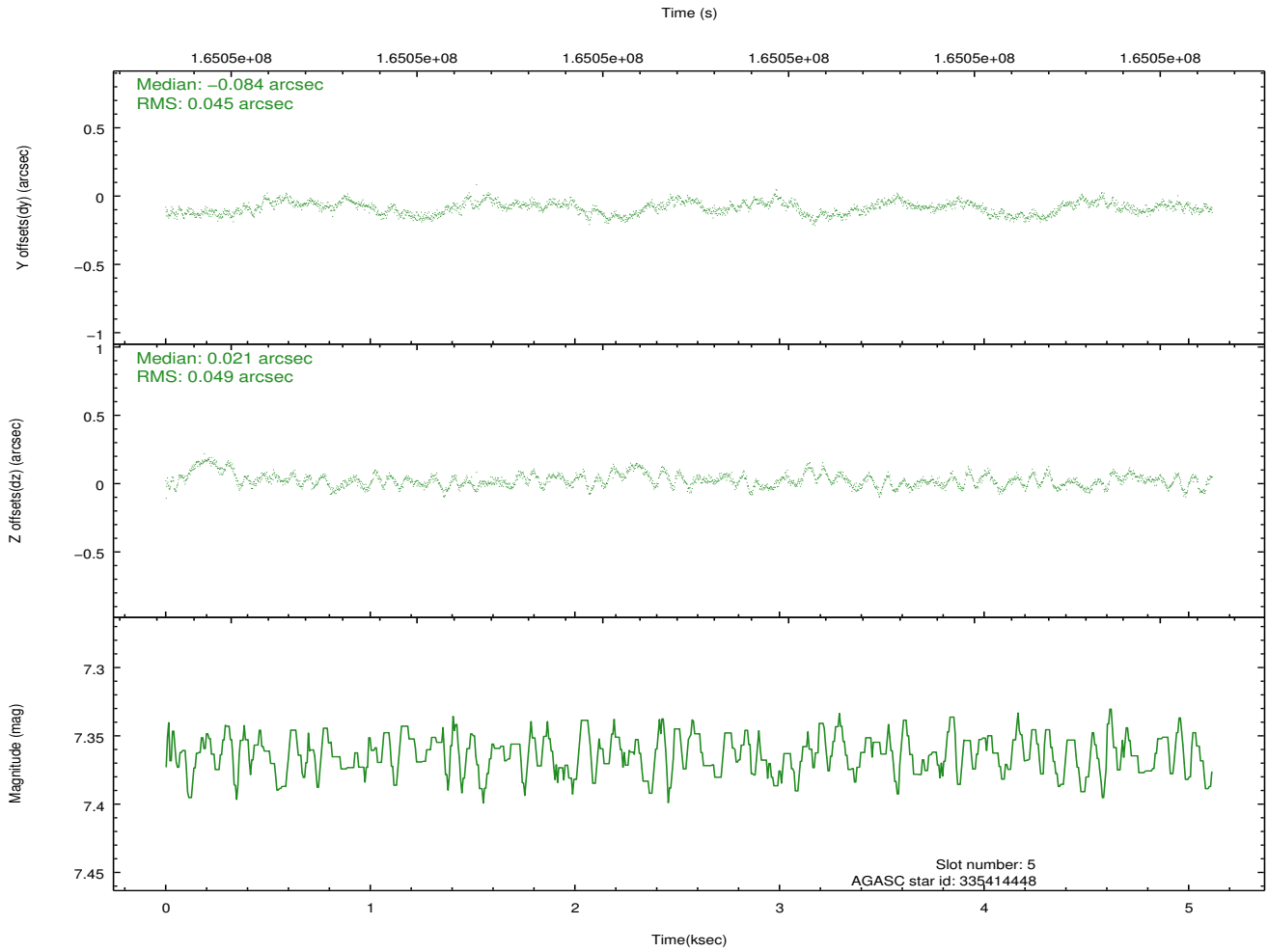
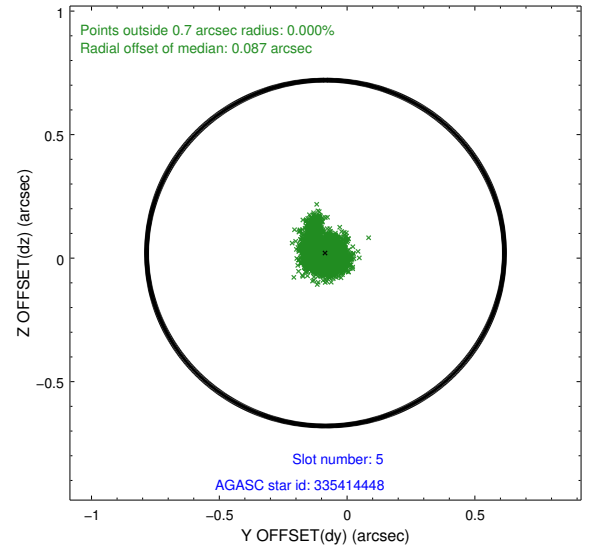
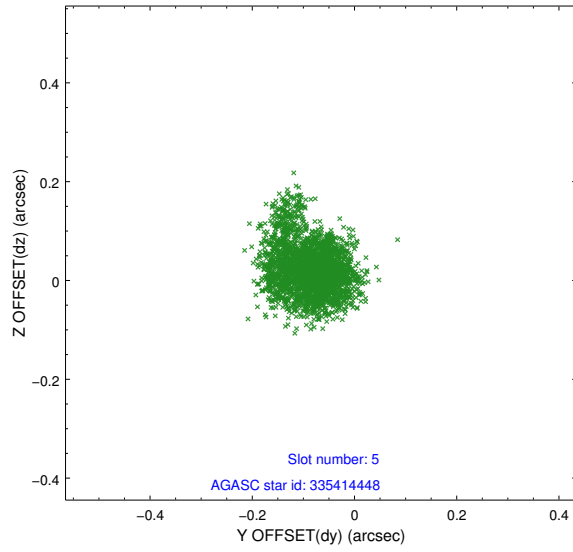
2.4.1 Slot 3



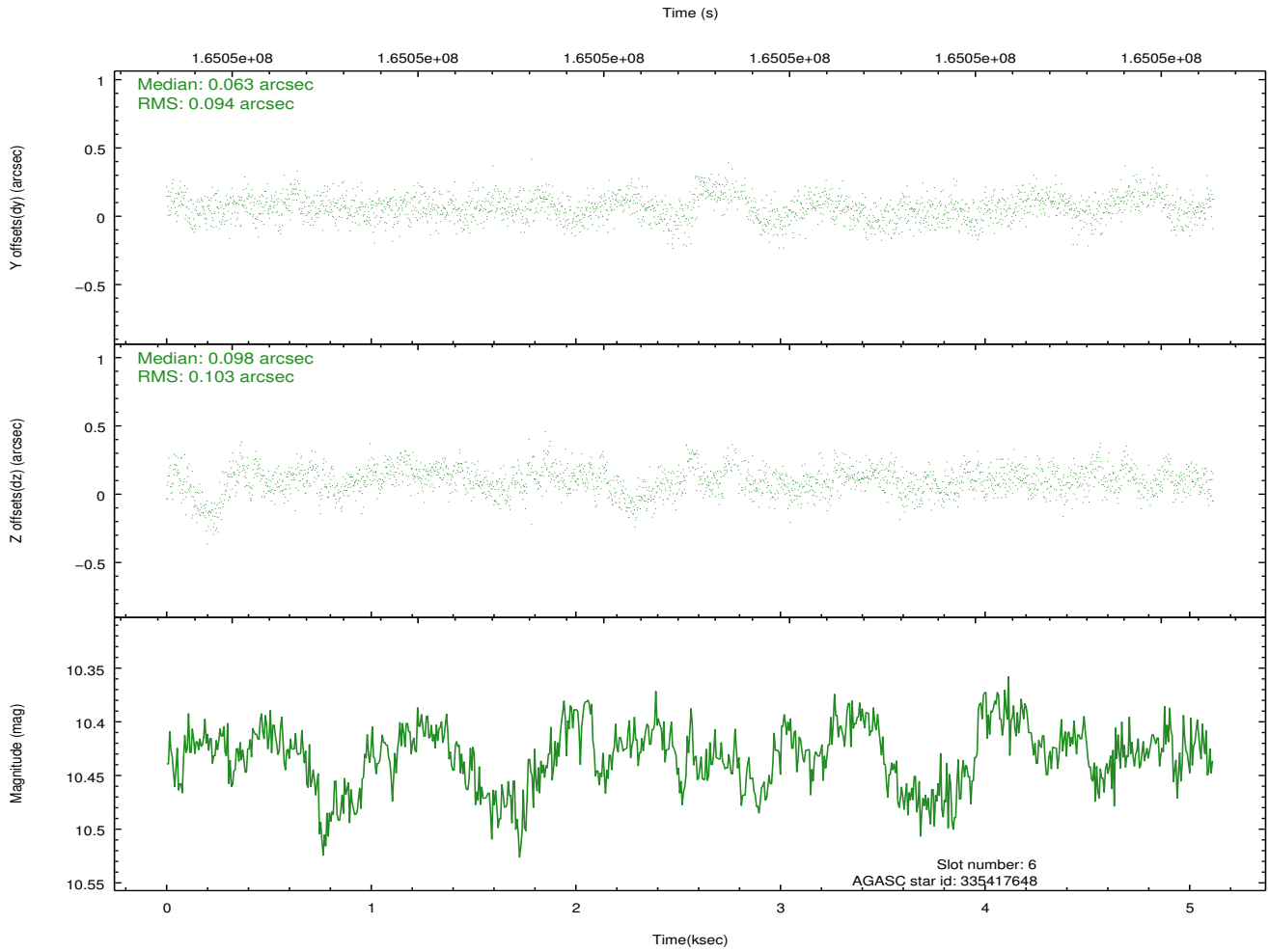
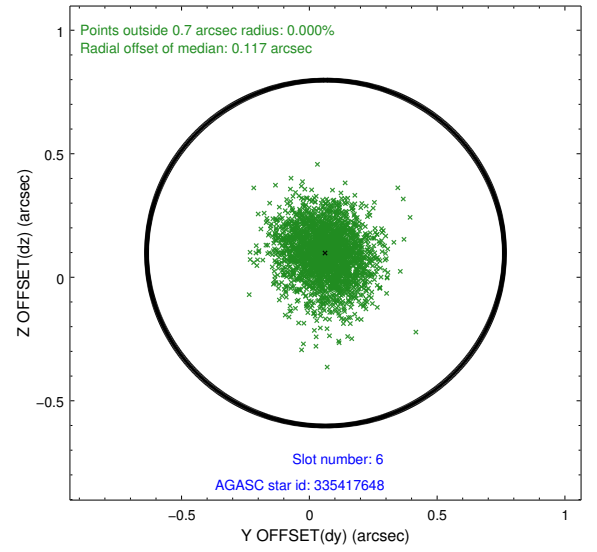
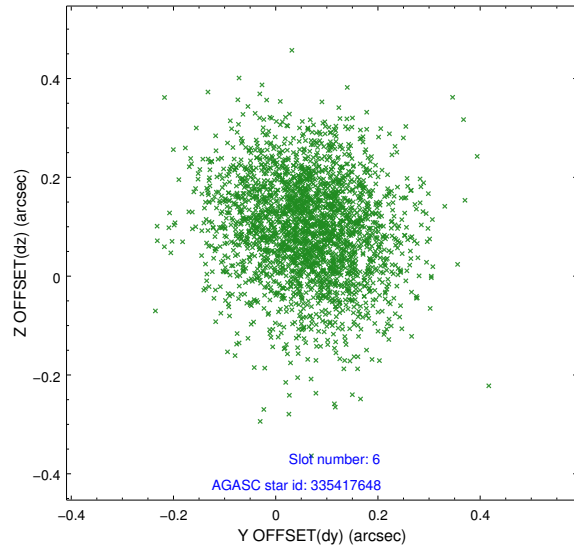
2.4.2 Slot 4



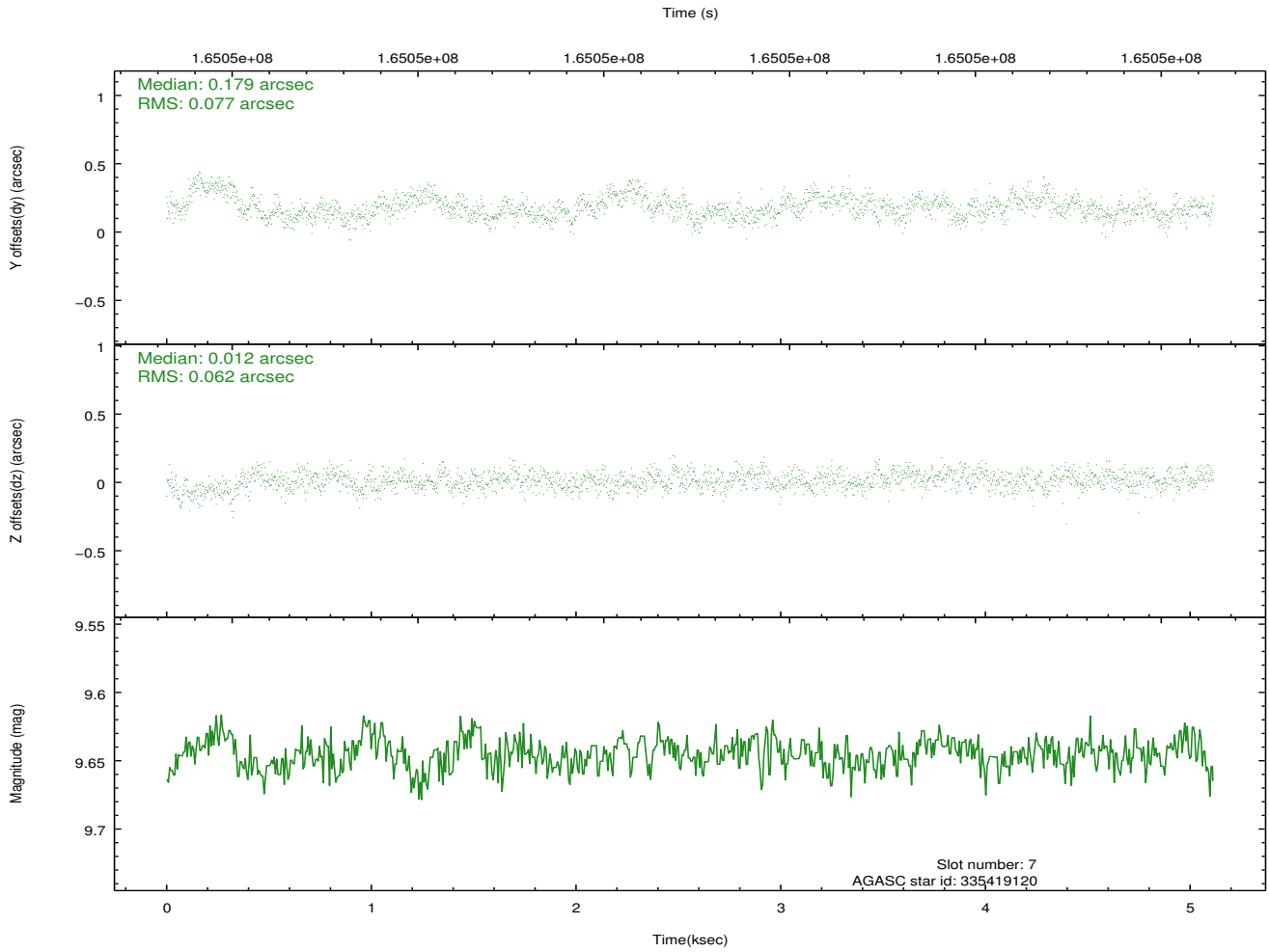
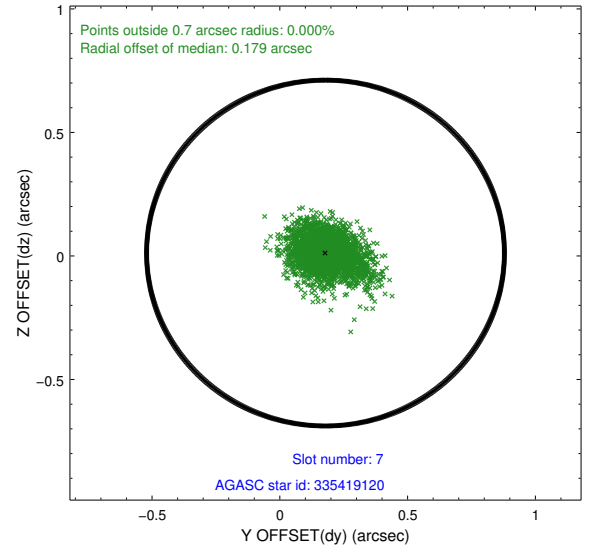
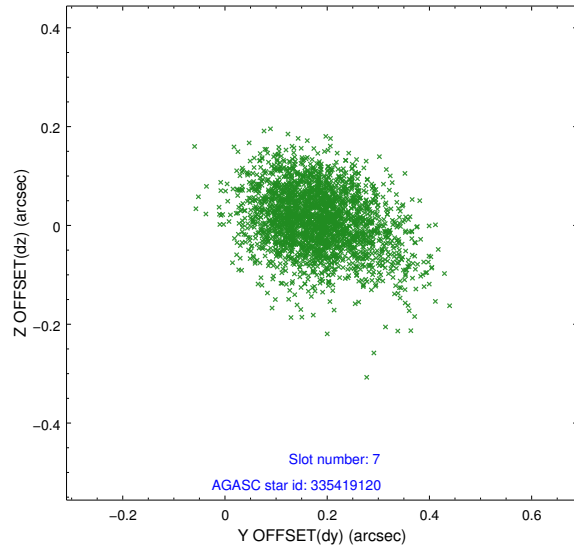
2.4.3 Slot 5



2.4.4 Slot 6

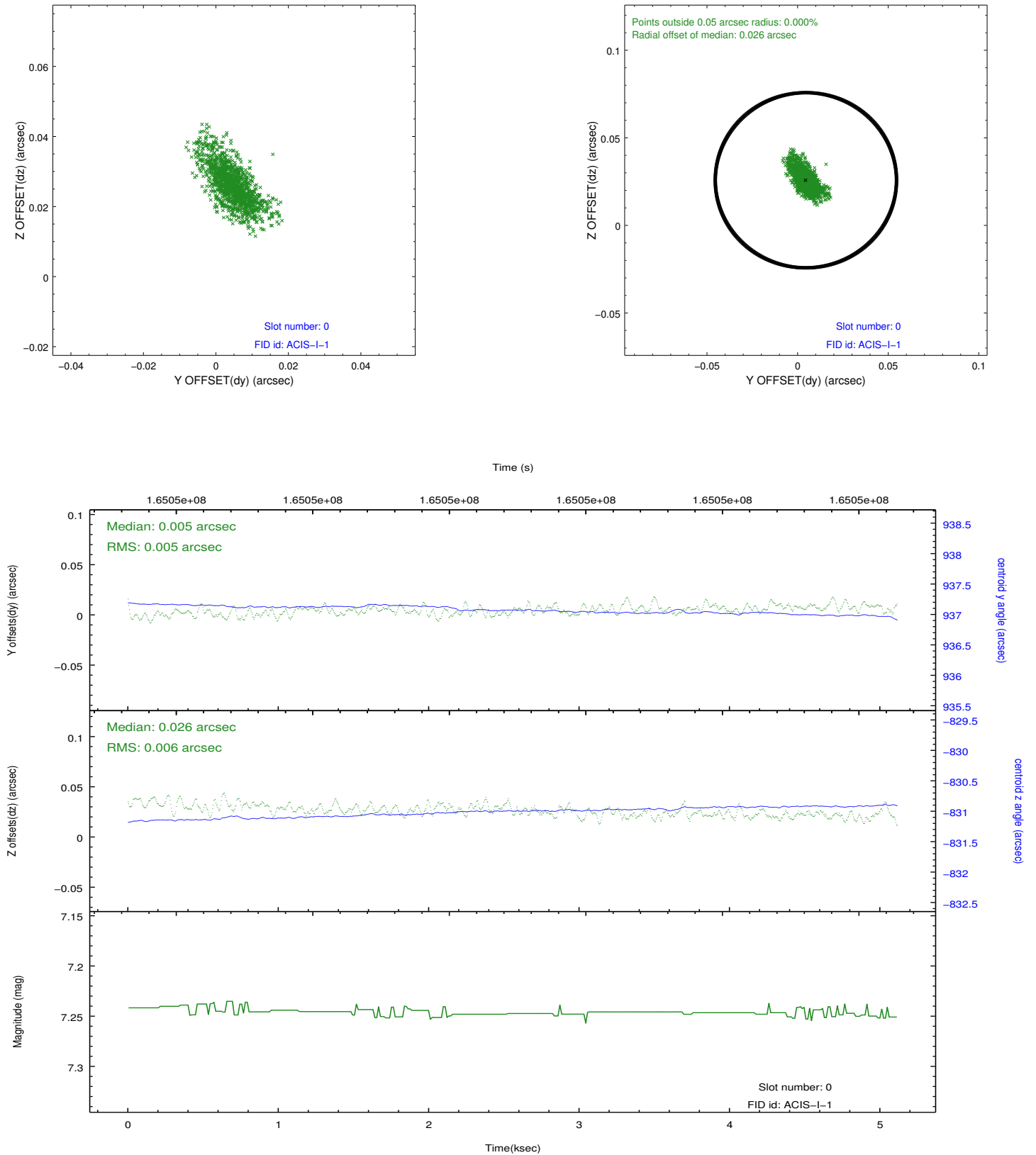


2.4.5 Slot 7

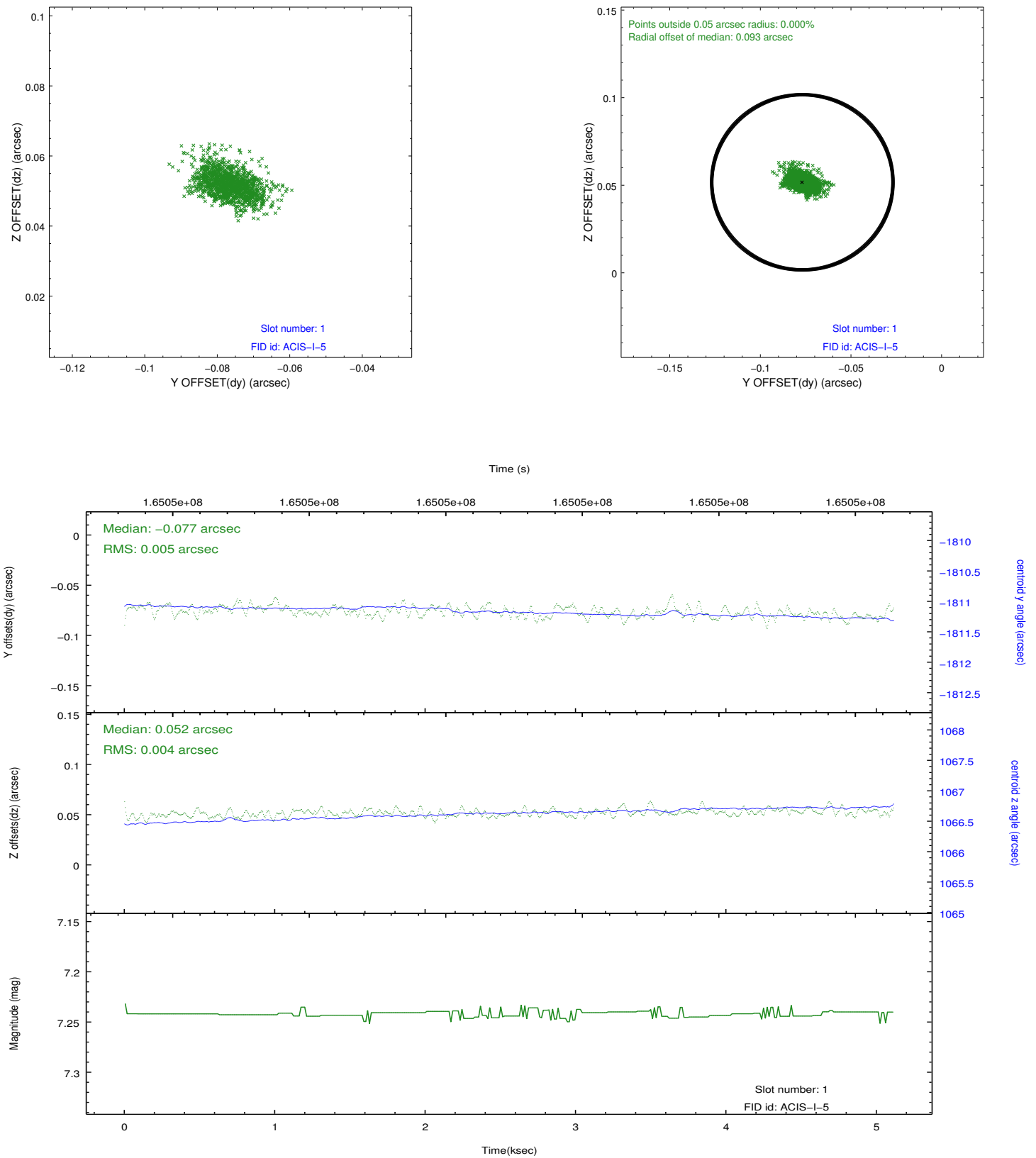


2.5 FID Slots

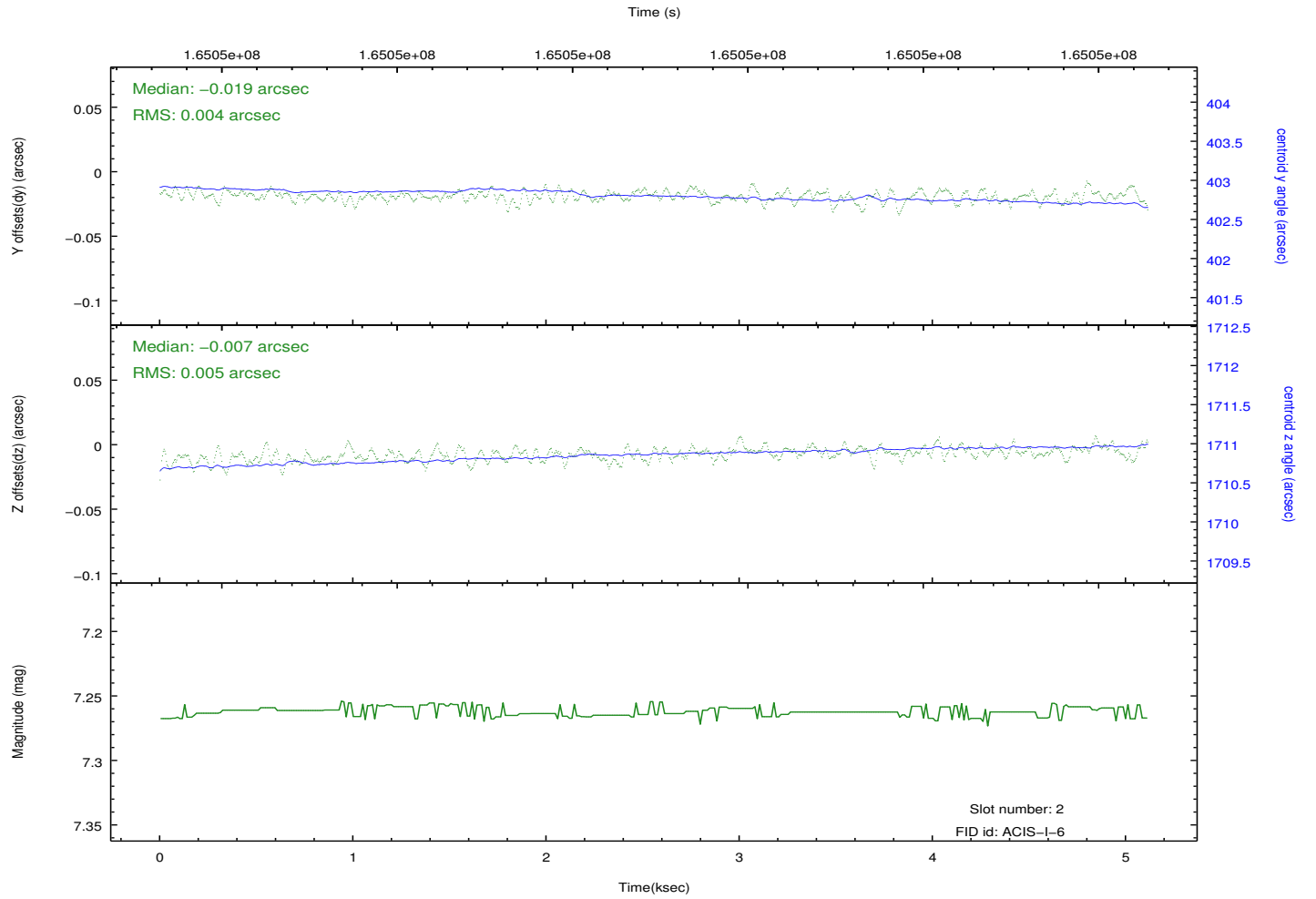
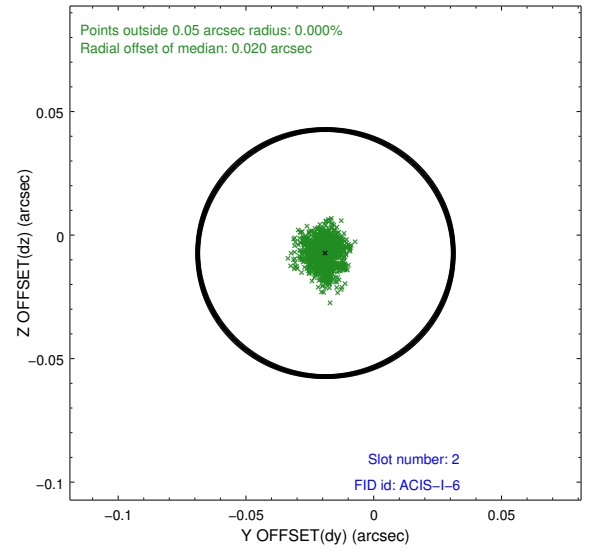
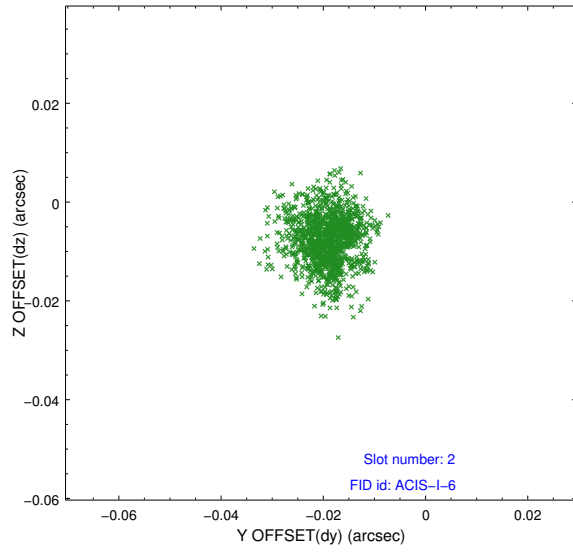
2.5.1 Slot 0



2.5.2 Slot 1



2.5.3 Slot 2



A Summary

A.1 Status

V&V Scientist	Jen Lauer
V&V Date (YYYY-MM-DD)	2012.11.08
V&V Edition	1
V&V Disposition and Status	OK
V&V Charge Time	5.108

A.2 Comments