

# V&V Reference Report

## L2 ASCDS Version : 7.6.8

Observation 3604 - L2 Version 001  
Chandra X-Ray Center

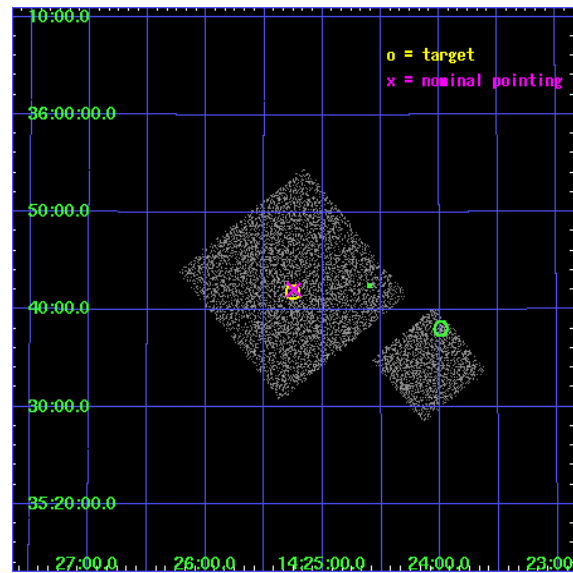
L2 Processing Date : Jul 25 2006

## Contents

<b>1</b>	<b>Front</b>	<b>2</b>
<b>2</b>	<b>OBI</b>	<b>3</b>
2.1	OBI . . . . .	3
2.1.1	Images . . . . .	3
2.1.2	Bias . . . . .	3
2.1.3	Parameters . . . . .	4
2.1.4	Events . . . . .	4
2.2	Compared Parameters . . . . .	5
2.3	Aspect . . . . .	6
2.4	Star Slots . . . . .	9
2.4.1	Slot 3 . . . . .	9
2.4.2	Slot 4 . . . . .	10
2.4.3	Slot 5 . . . . .	11
2.4.4	Slot 6 . . . . .	12
2.4.5	Slot 7 . . . . .	13
2.5	FID Slots . . . . .	14
2.5.1	Slot 0 . . . . .	14
2.5.2	Slot 1 . . . . .	15
2.5.3	Slot 2 . . . . .	16
<b>3</b>	<b>Point Sources</b>	<b>17</b>
<b>A</b>	<b>Summary</b>	<b>18</b>
A.1	Status . . . . .	18
A.2	Comments . . . . .	18

# 1 Front

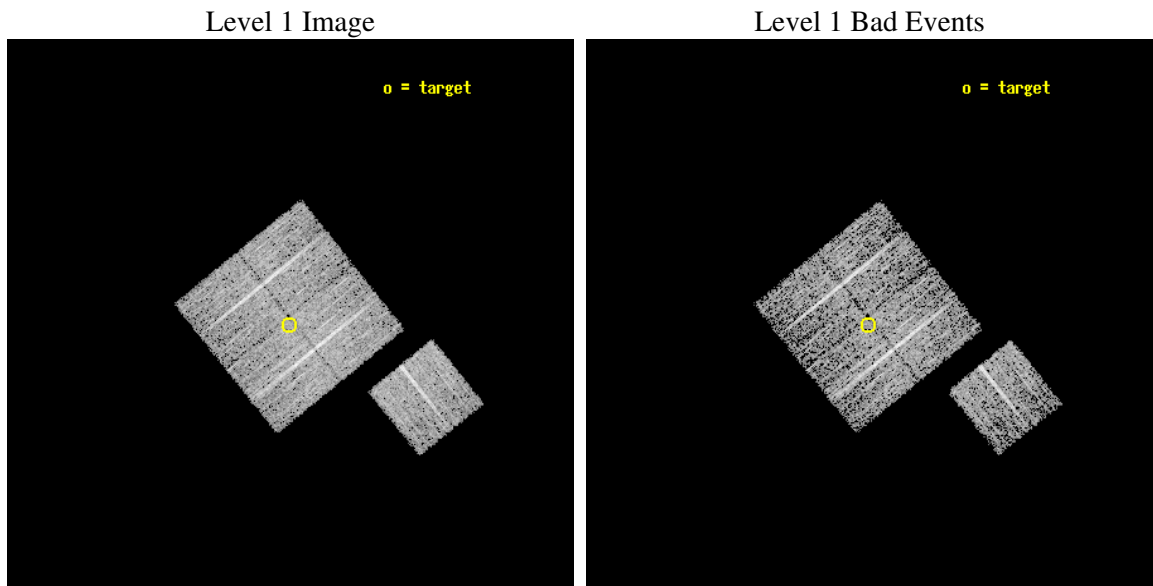
seq_num	900204
obs_id	3604
title	CHANDRA LARGE SCALE SURVEY OF THE NOAO BOOTES DEEP FIELD
observer	Dr. Stephen Murray
object	NOAO FIELD F35
dtcycle	0
cycle	P
ra_targ	216.314346
dec_targ	35.697552
ra_nom	216.31160394554
dec_nom	35.701611273048
roll_nom	141.01037795411
revision	2
ontime	5105.6590199471
livetime	5038.94982612
ontime0	5108.7999901772
ontime1	5105.6590199471
ontime2	5108.7999901772
ontime3	5105.6590199471
ontime6	5105.6590099037
l2events	10163



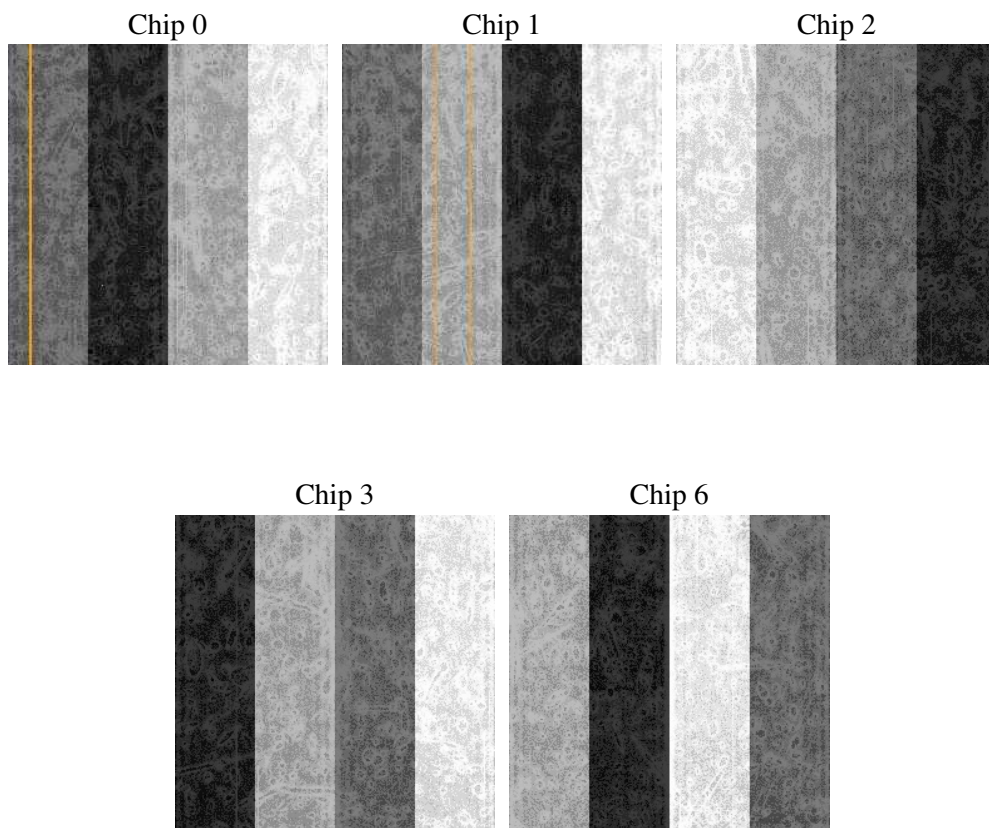
## 2 OBI

### 2.1 OBI

#### 2.1.1 Images



#### 2.1.2 Bias



### 2.1.3 Parameters

obi_num	0
ascdsver	7.6.8
caldsver	3.2.2
date	2006-07-25T22:21:01
revision	2

sched_exp_time	5000.000000
ontime	5264.3300219476
ontime0	5267.4709921777
ontime1	5264.3300219476
ontime2	5267.4709722698
ontime3	5264.3300219476
ontime6	5264.3299919963
l1events	132348

### 2.1.4 Events

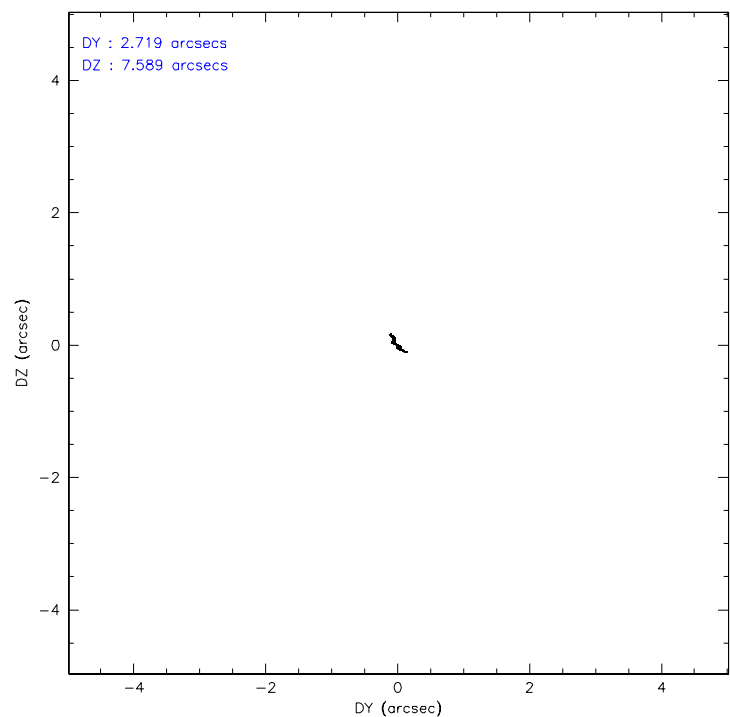
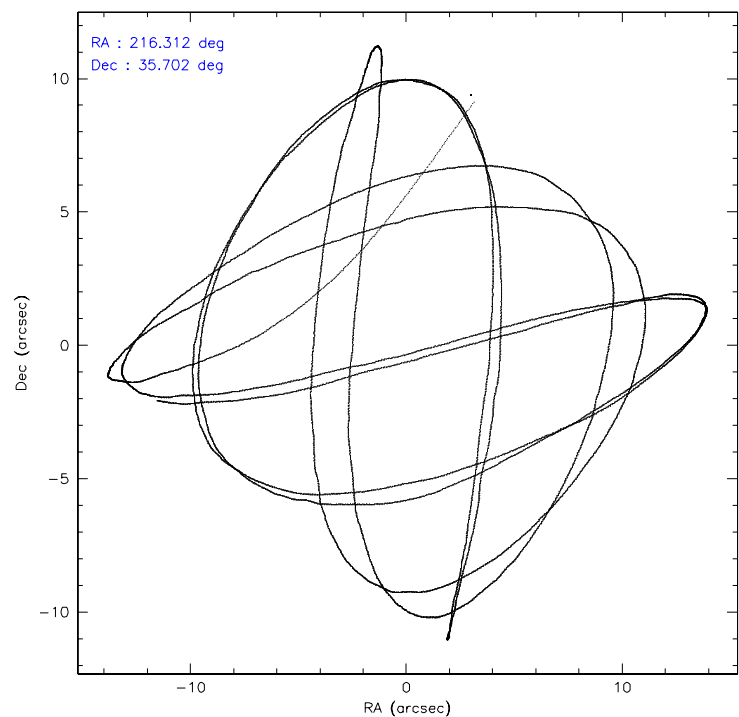
	ccd 0	ccd 1	ccd 2	ccd 3	ccd 6
level 1 events	25876	24272	28449	27171	26580
rejected events	23398	21696	25900	24862	23977
rejected %	90%	89%	91%	91%	90%

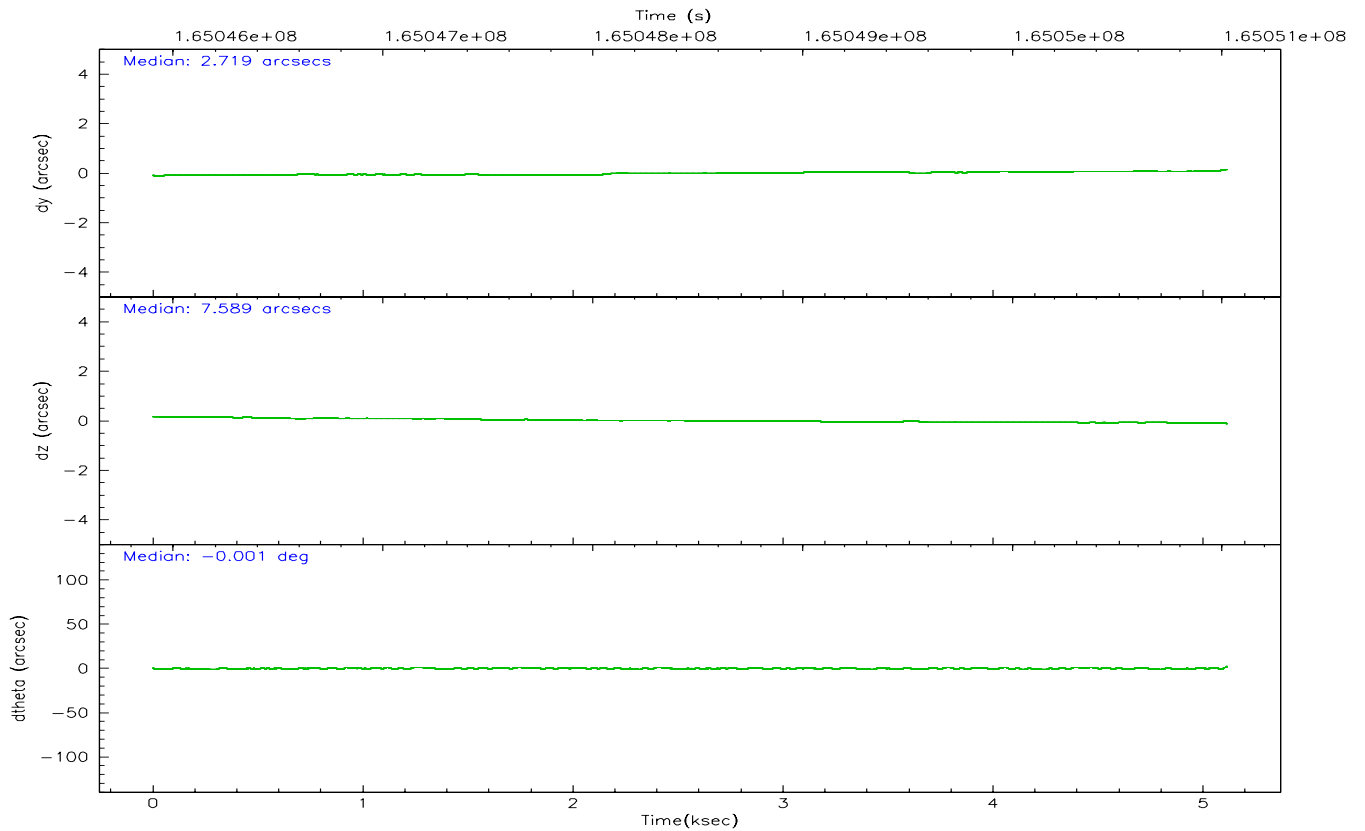
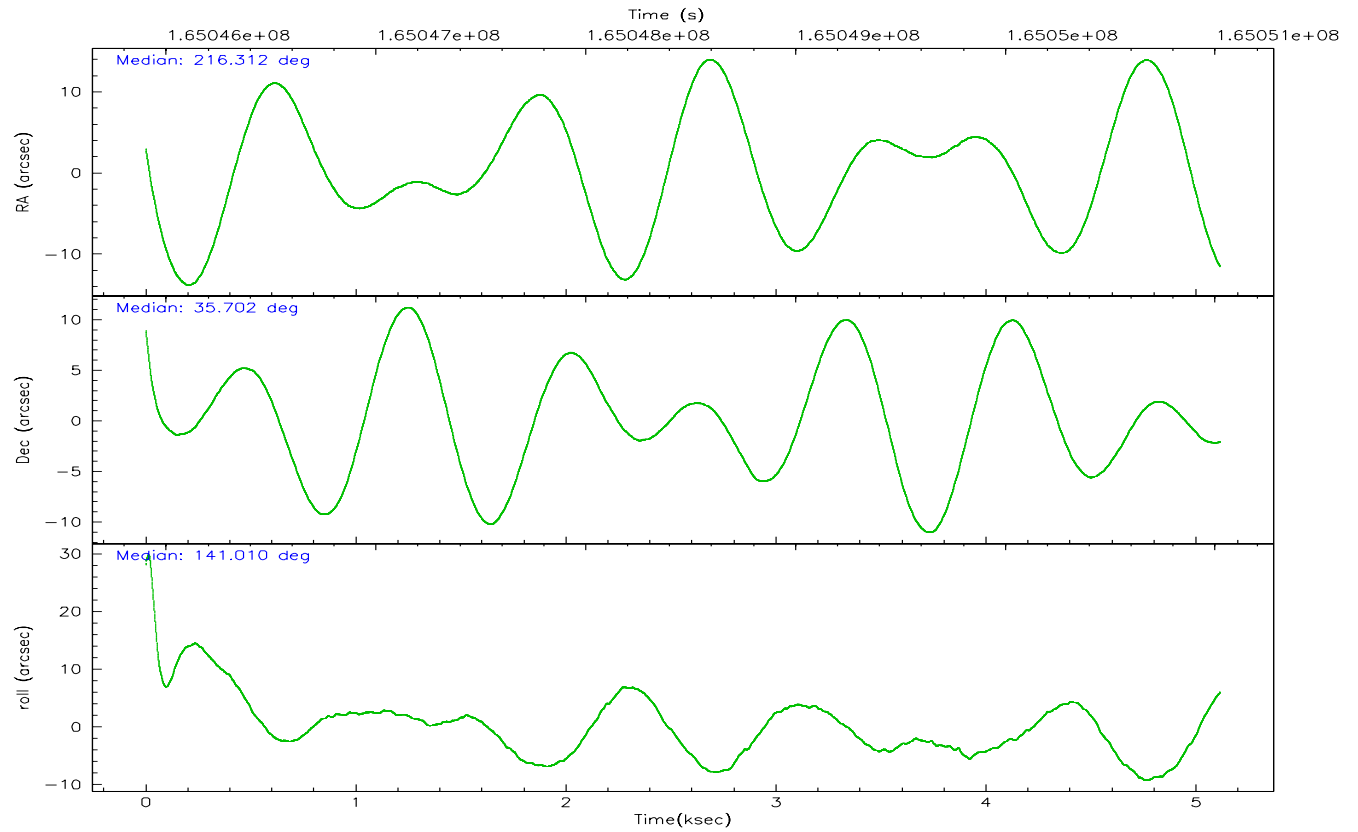
	ccd 0	ccd 1	ccd 2	ccd 3	ccd 6
grade 0 events	919	889	993	849	984
	3%	3%	3%	3%	3%
grade 1 events	7	12	11	14	6
	0%	0%	0%	0%	0%
grade 2 events	577	553	618	507	569
	2%	2%	2%	1%	2%
grade 3 events	314	330	275	279	306
	1%	1%	0%	1%	1%
grade 4 events	300	334	303	285	323
	1%	1%	1%	1%	1%
grade 5 events	797	804	745	900	855
	3%	3%	2%	3%	3%
grade 6 events	446	564	439	448	504
	1%	2%	1%	1%	1%
grade 7 events	22516	20786	25065	23889	23033
	87%	85%	88%	87%	86%

## 2.2 Compared Parameters

Parameter	Planned	Actual	Parameter	Planned	Actual
Instrument	ACIS	ACIS	Obspar format version number	6	6
Detector	ACIS-01236	ACIS-01236	Obspar file type	PREDICTED	ACTUAL
Grating	NONE	NONE	Obspar update status	NONE	UPDATED
Data mode	VFAINT	VFAINT	On-chip summing requested	N	N
Observation mode	POINTING	POINTING	Subarray requested	NONE	NONE
Pointing RA	216.344986	216.3116039455401	Alternating exposures requested	N	N
Pointing Dec	35.697478	35.7016112730484	Primary exposure time	0.000000	3.1
Pointing Roll	140.782125	141.0103779541105			
SIM focus pos (mm)	-0.782348	-0.7809083437167272			
SIM defocus (mm)	0	0.001439871863259334			
SIM translation stage pos (mm)	-233.592463	-233.5874344608287			
SIM translation stage offset (mm)	0	-0.005018542100998502			
Observation start time	165046019.184000	165044986.94787			
Observation start date	2003-03-26T06:05:55	2003-03-26T05:49:46			
Observation end time	165051019.184000	165051153.86063			
Observation end date	2003-03-26T07:29:15	2003-03-26T07:32:33			
Read mode	TIMED	TIMED			

## 2.3 Aspect





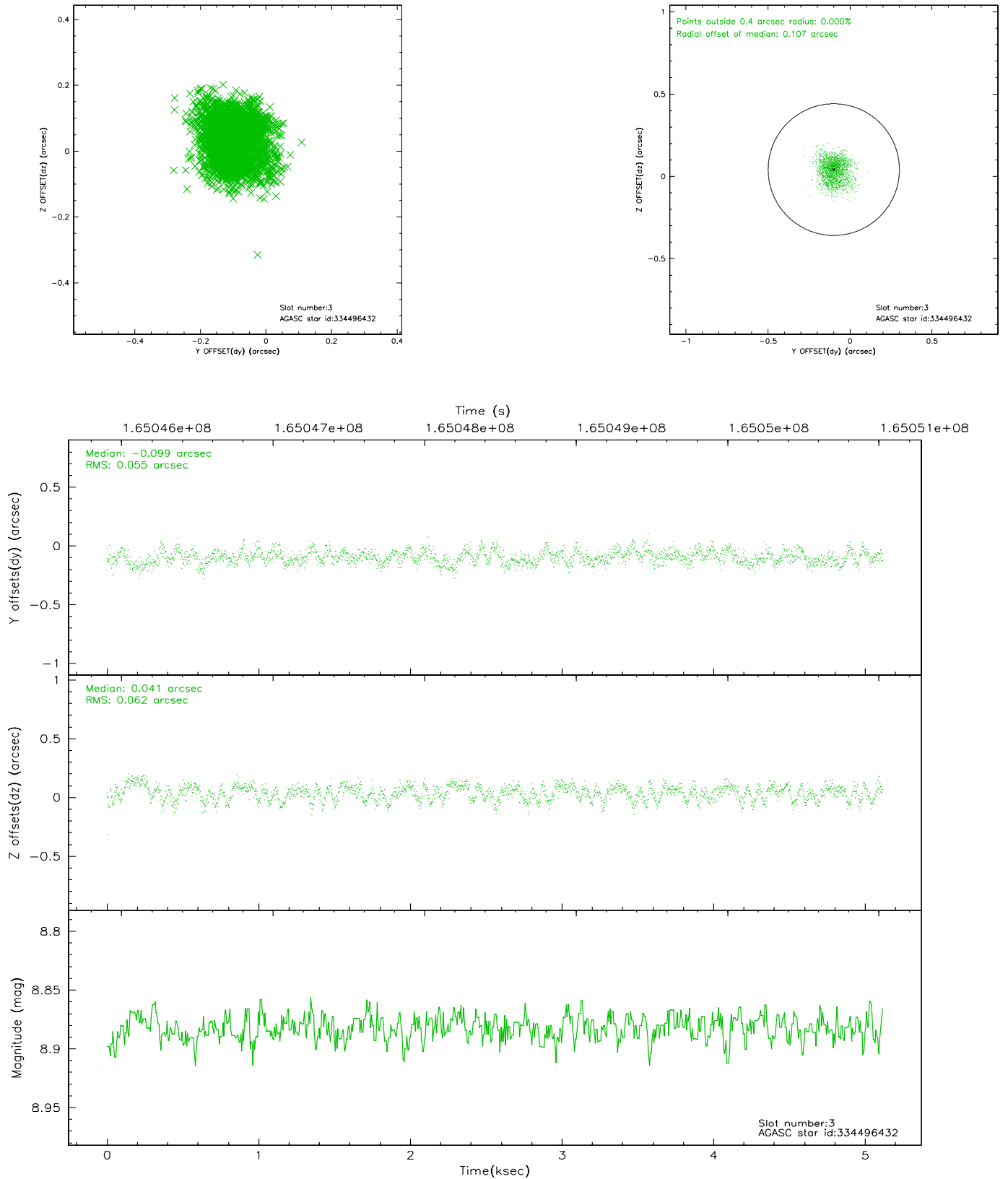
### Slot Statistics

slot	status	id	mag	n_pts	med_dy	med_dz	dr1	dr2	ra	dec	mean_y	mean_z
0	FID	ACIS-I-1	7.25	1248	-0.016	0.053	0.008	0.014	0.000000	0.000000	937.06	-830.97
1	FID	ACIS-I-5	7.24	1248	-0.046	0.044	0.007	0.011	0.000000	0.000000	-1810.39	1065.96
2	FID	ACIS-I-6	7.26	1248	-0.029	-0.027	0.007	0.012	0.000000	0.000000	401.35	1711.70
3	GUIDE	334496432	8.88	2496	-0.099	0.041	0.088	0.143	215.867635	36.250052	2334.06	-667.25
4	GUIDE	334497344	8.23	2496	-0.058	-0.168	0.061	0.101	215.557968	35.648808	1679.86	1583.68
5	GUIDE	335414448	7.36	2496	-0.084	0.021	0.070	0.116	216.992261	35.577204	-1737.65	-866.98
6	GUIDE	335417648	10.43	2470	0.063	0.098	0.147	0.241	216.000046	36.018960	1510.55	-263.32
7	GUIDE	335419120	9.65	2494	0.179	0.012	0.102	0.176	216.521861	35.833546	-88.91	-706.40

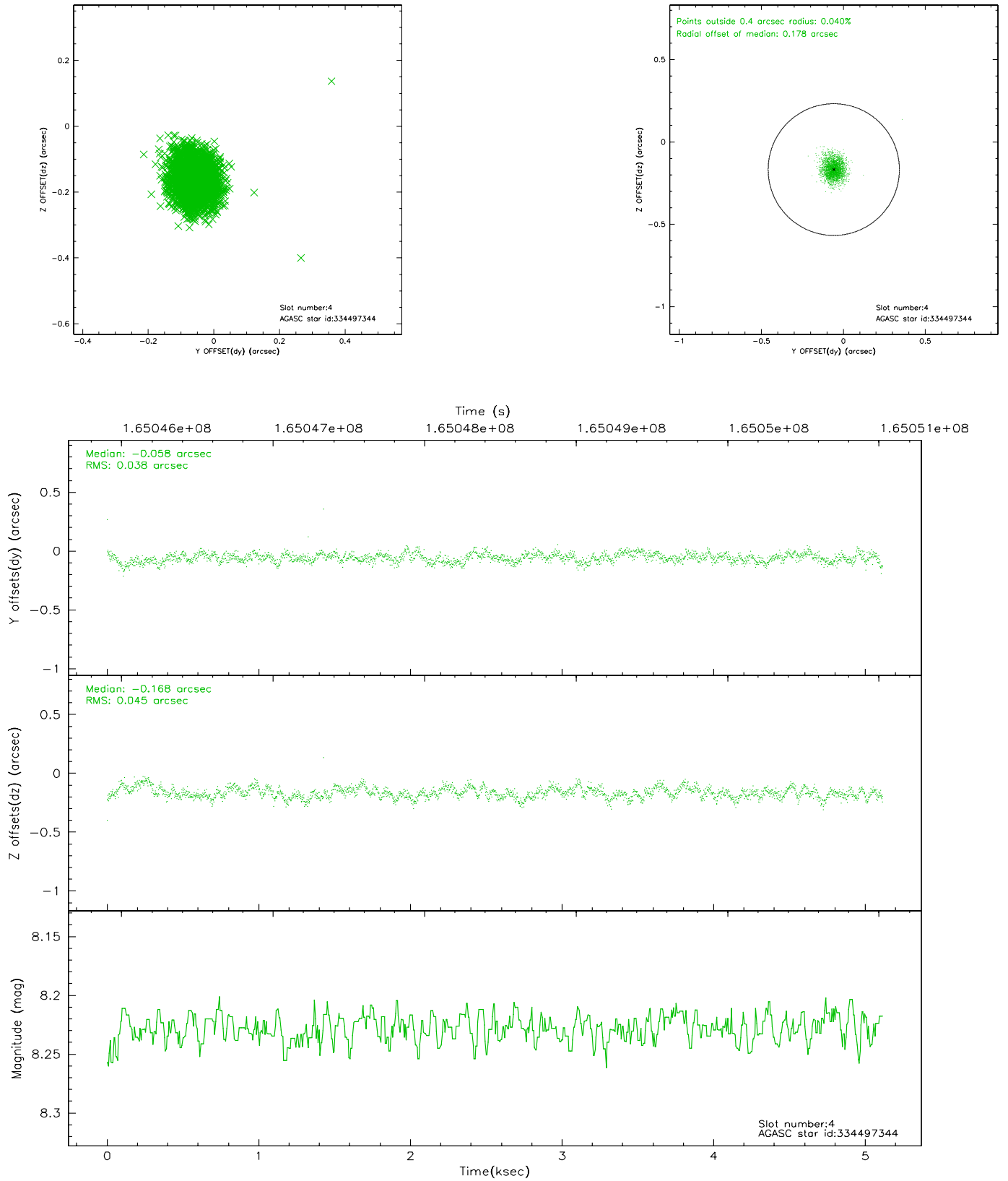


## 2.4 Star Slots

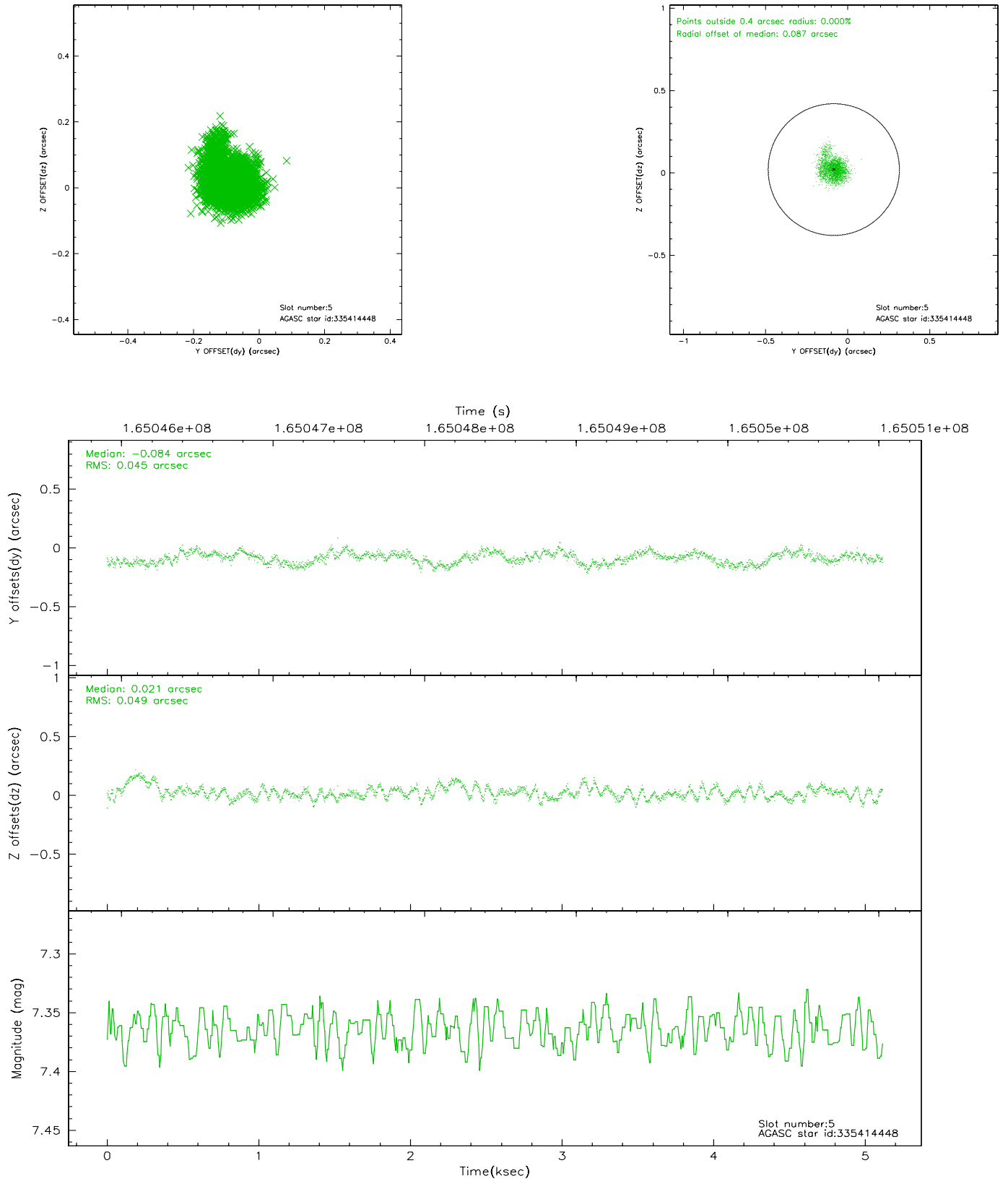
### 2.4.1 Slot 3



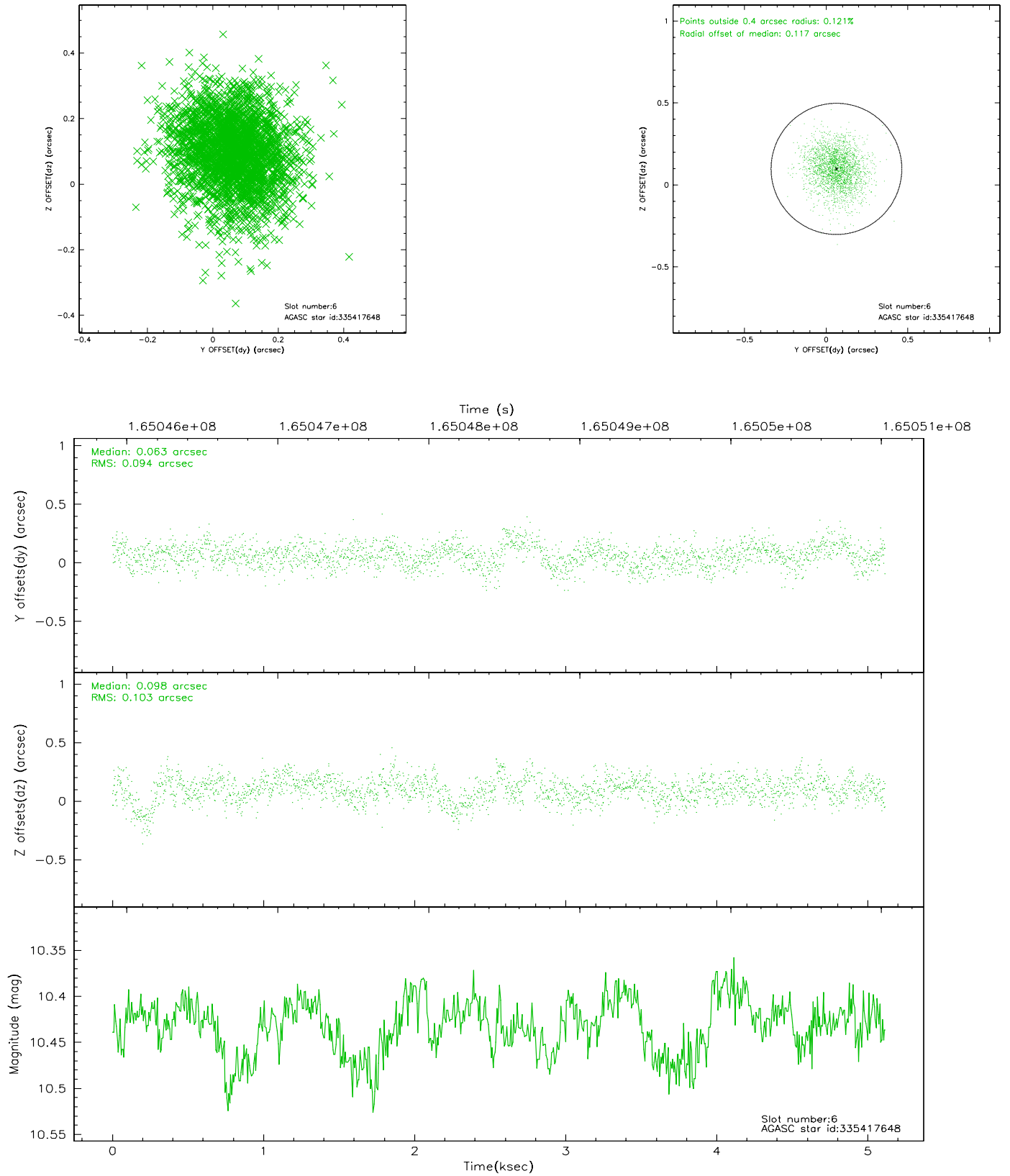
## 2.4.2 Slot 4



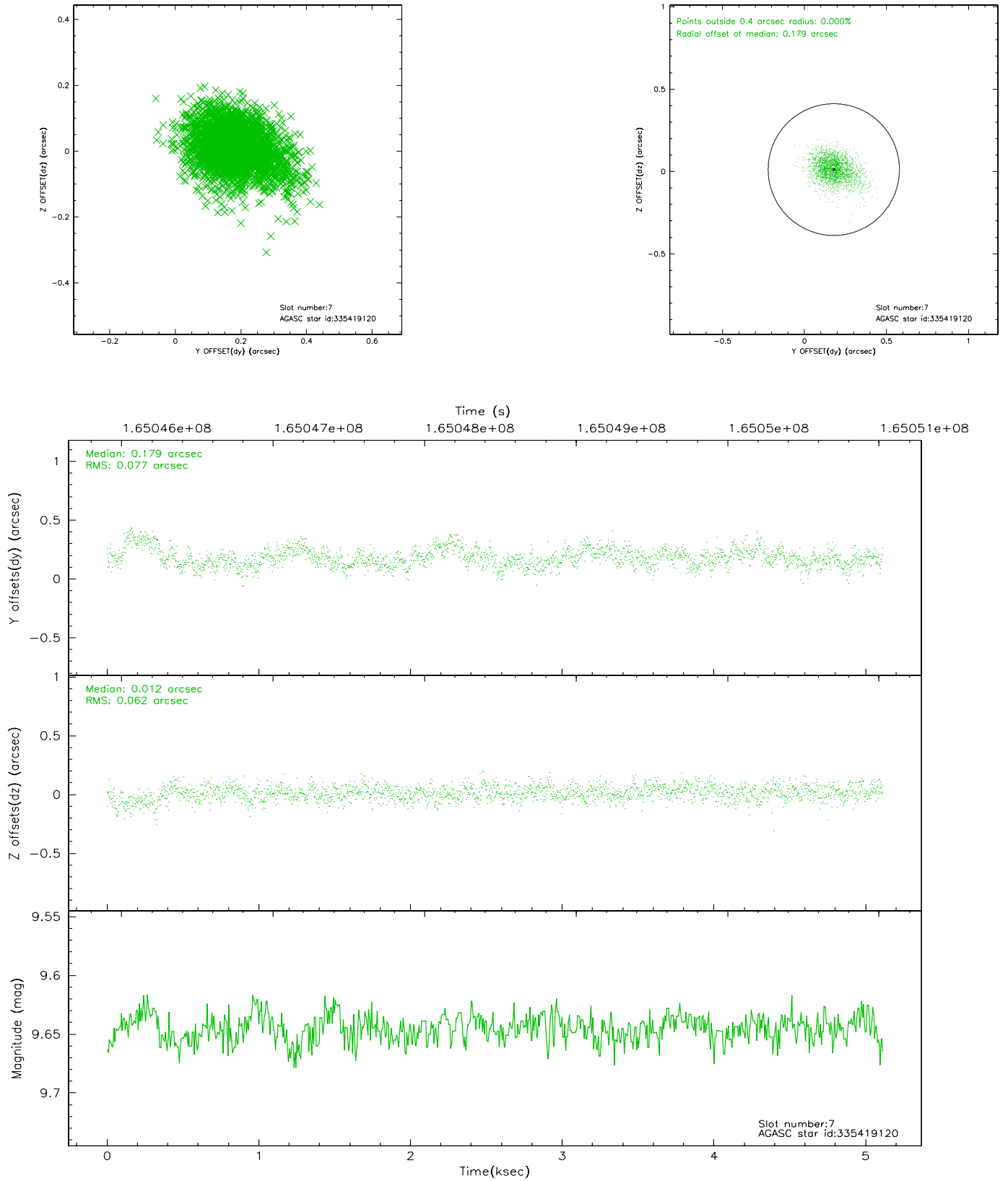
### 2.4.3 Slot 5



## 2.4.4 Slot 6

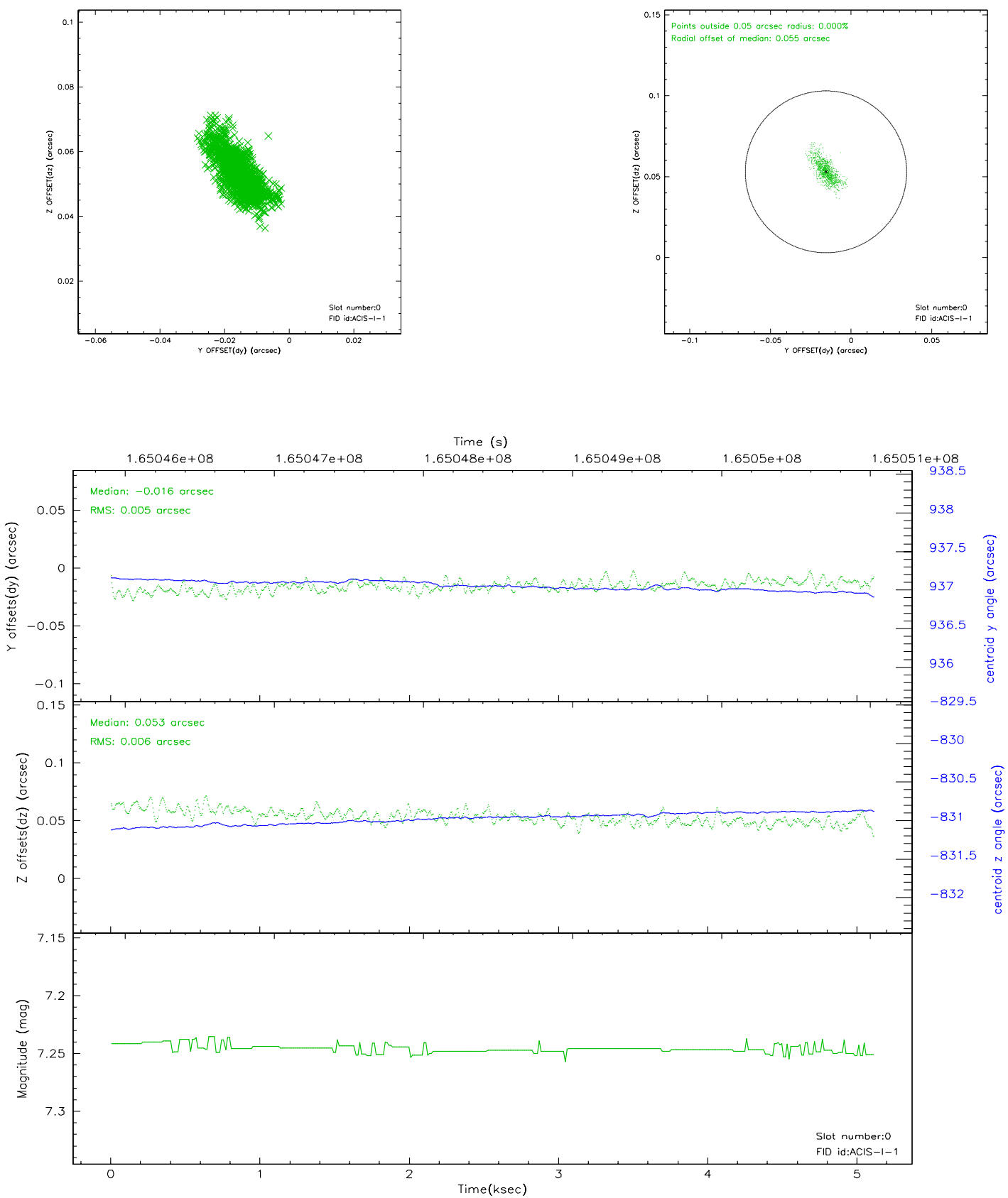


## 2.4.5 Slot 7

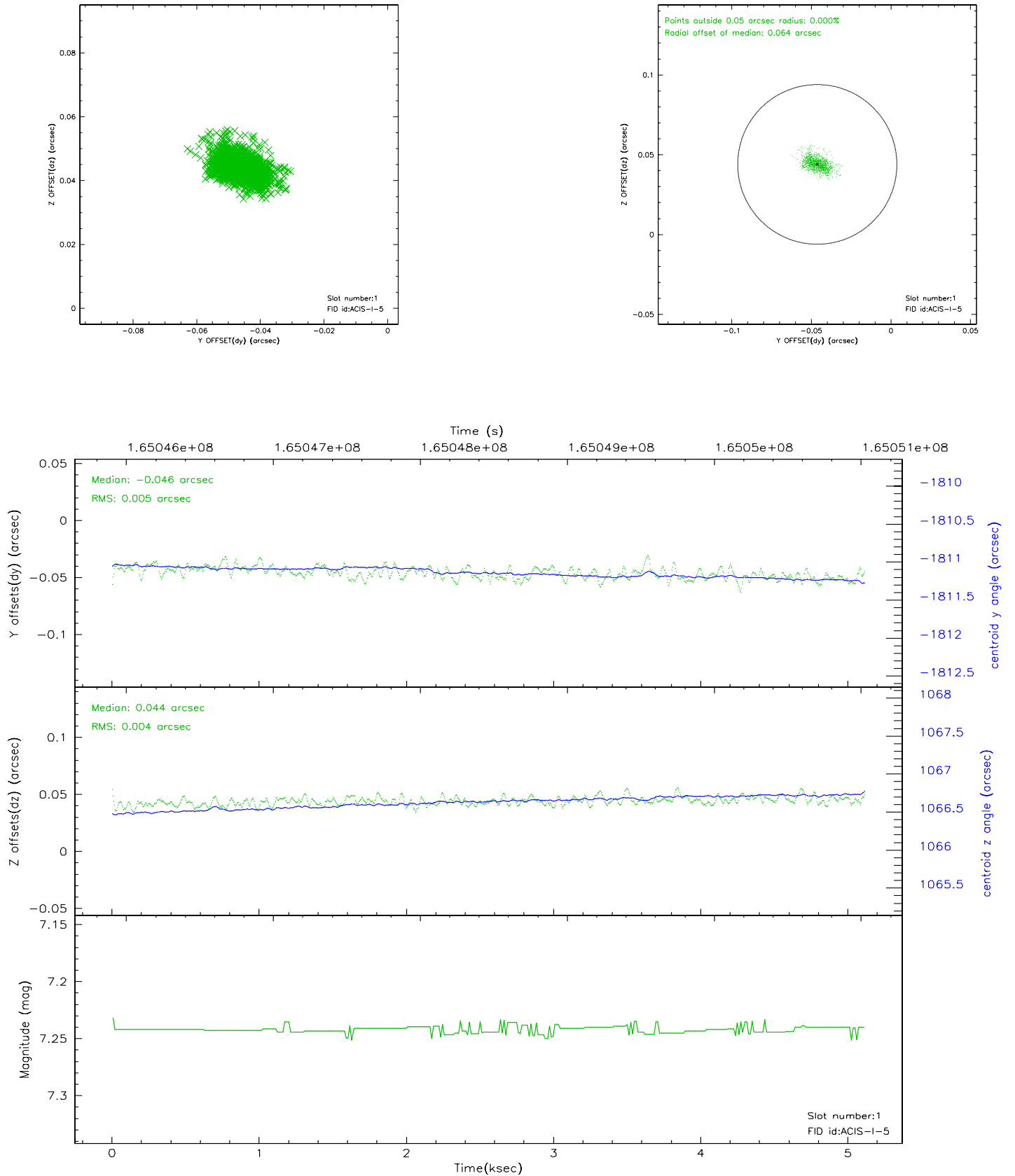


## 2.5 FID Slots

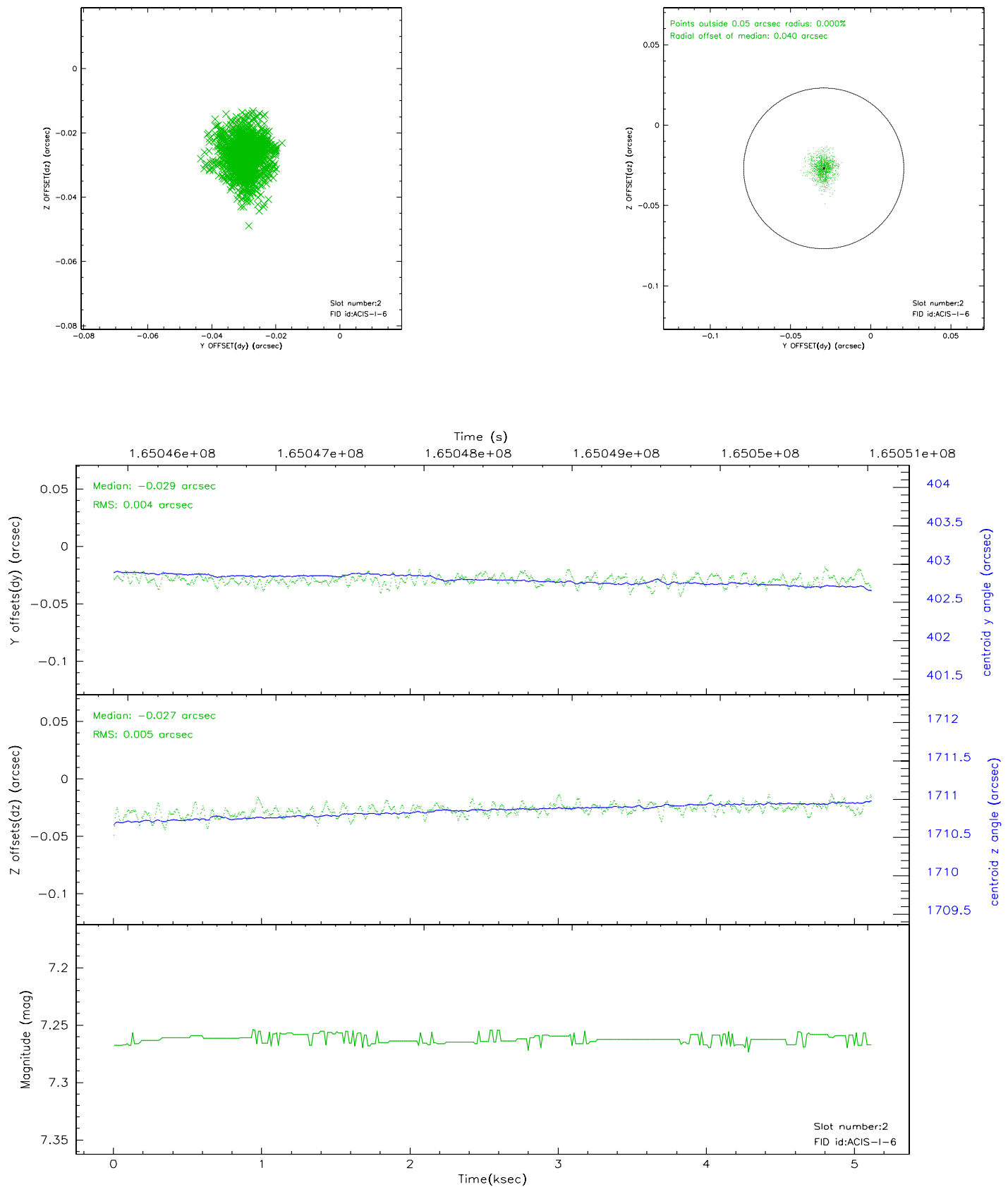
### 2.5.1 Slot 0



## 2.5.2 Slot 1



### 2.5.3 Slot 2





### 3 Point Sources

7.94 arcmin



## A Summary

### A.1 Status

V&V Scientist	Beth Sundheim
V&V Date (YYYY-MM-DD)	2006.07.26
V&V Edition	1
V&V Disposition and Status	OK
V&V Charge Time	5.108

### A.2 Comments