

V&V Reference Report

L2 ASCDS Version : 7.6.8

Observation 3601 - L2 Version 001
Chandra X-Ray Center

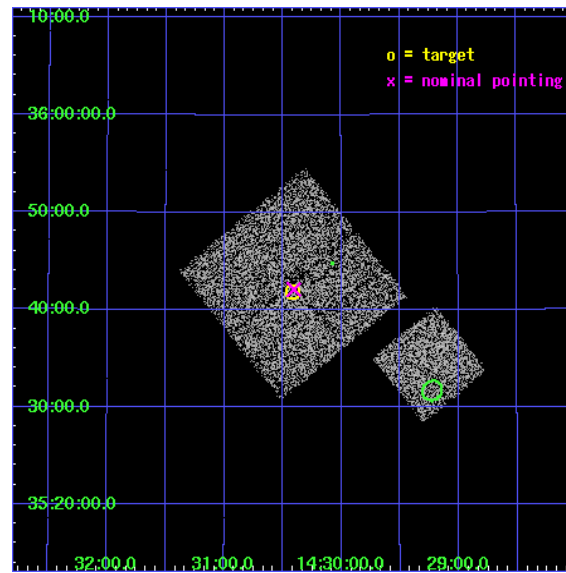
L2 Processing Date : Jul 30 2006

Contents

1	Front	2
2	OBI	3
2.1	OBI	3
2.1.1	Images	3
2.1.2	Bias	3
2.1.3	Parameters	4
2.1.4	Events	4
2.2	Compared Parameters	5
2.3	Aspect	6
2.4	Star Slots	9
2.4.1	Slot 3	9
2.4.2	Slot 4	10
2.4.3	Slot 5	11
2.4.4	Slot 6	12
2.4.5	Slot 7	13
2.5	FID Slots	14
2.5.1	Slot 0	14
2.5.2	Slot 1	15
2.5.3	Slot 2	16
3	Point Sources	17
A	Summary	18
A.1	Status	18
A.2	Comments	18

1 Front

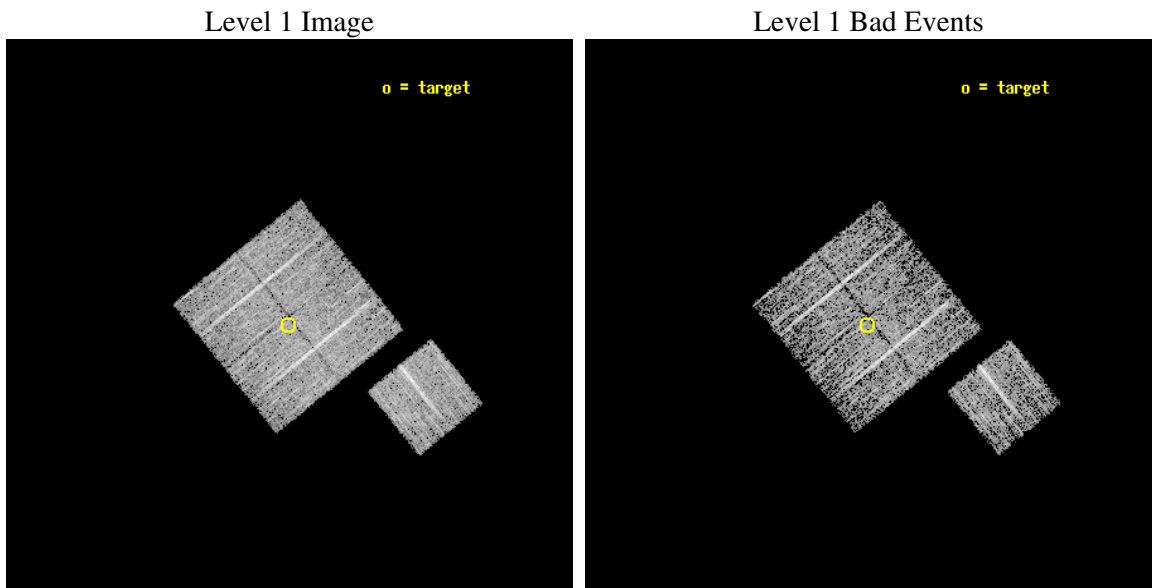
seq_num	900201
obs_id	3601
title	CHANDRA LARGE SCALE SURVEY OF THE NOAO BOOTES DEEP FIELD
observer	Dr. Stephen Murray
object	NOAO FIELD F1
dtcycle	0
cycle	P
ra_targ	217.604097
dec_targ	35.697552
ra_nom	217.60140441788
dec_nom	35.701622762456
roll_nom	141.0102507106
revision	2
ontime	4575.5999912024
livetime	4515.8164088096
ontime0	4575.5999912024
ontime1	4575.5999912024
ontime2	4572.4590210021
ontime3	4575.5999912024
ontime6	4575.5999912024
l2events	17187



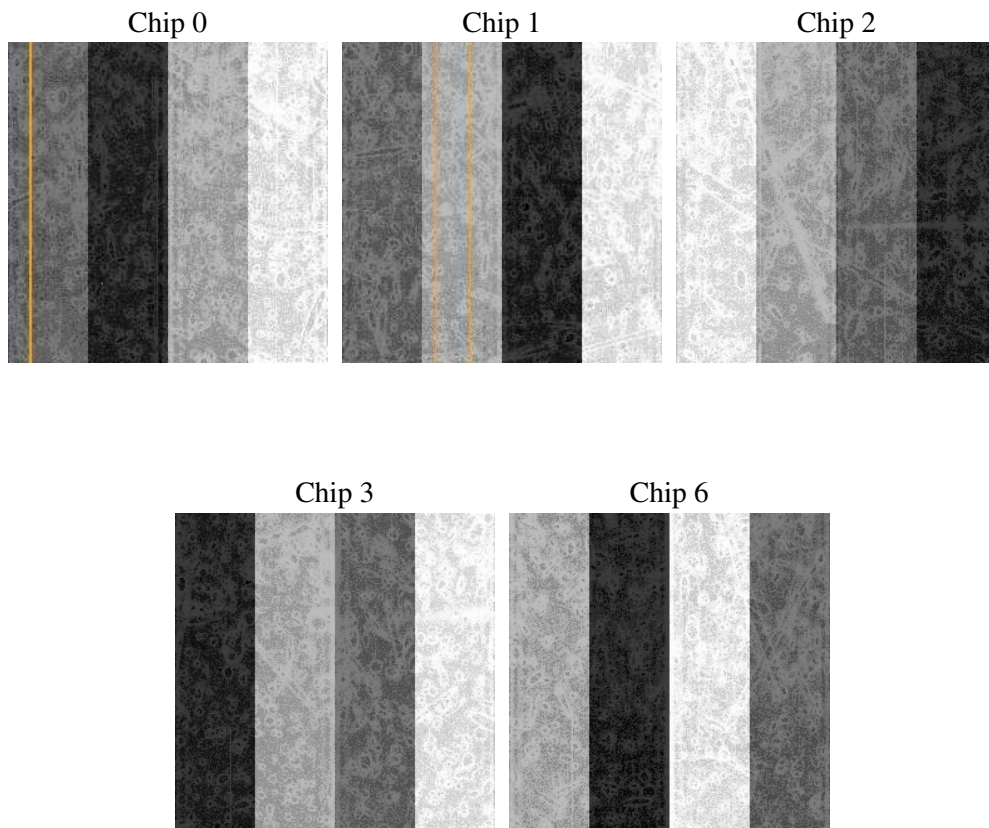
2 OBI

2.1 OBI

2.1.1 Images



2.1.2 Bias



2.1.3 Parameters

obi_num	1
ascdsver	7.6.8
caldsver	3.2.2
date	2006-07-30T08:52:16
revision	2

sched_exp_time	4800.000000
ontime	4579.5833531618
ontime0	4579.5833232403
ontime1	4579.5833232403
ontime2	4576.44235304
ontime3	4579.5833531618
ontime6	4582.7243333459
l1events	128564

2.1.4 Events

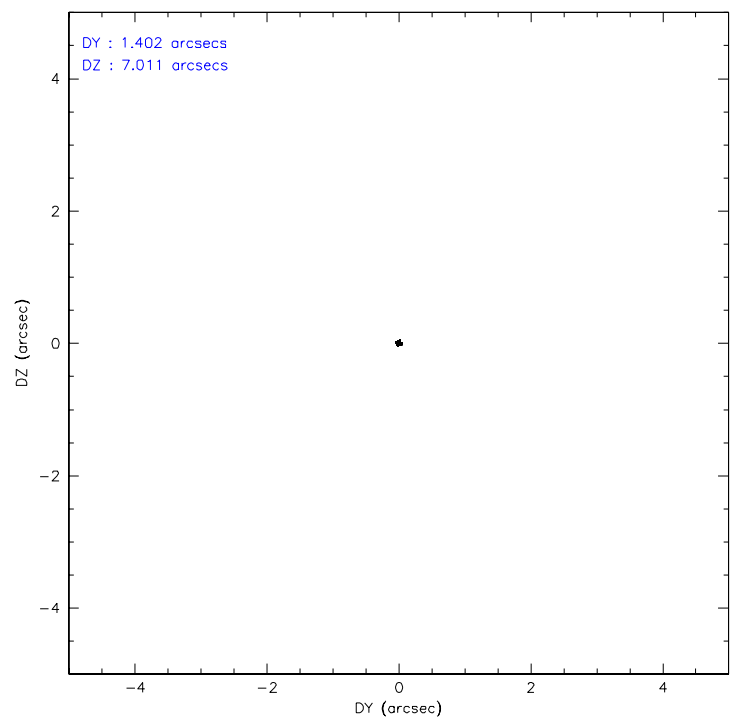
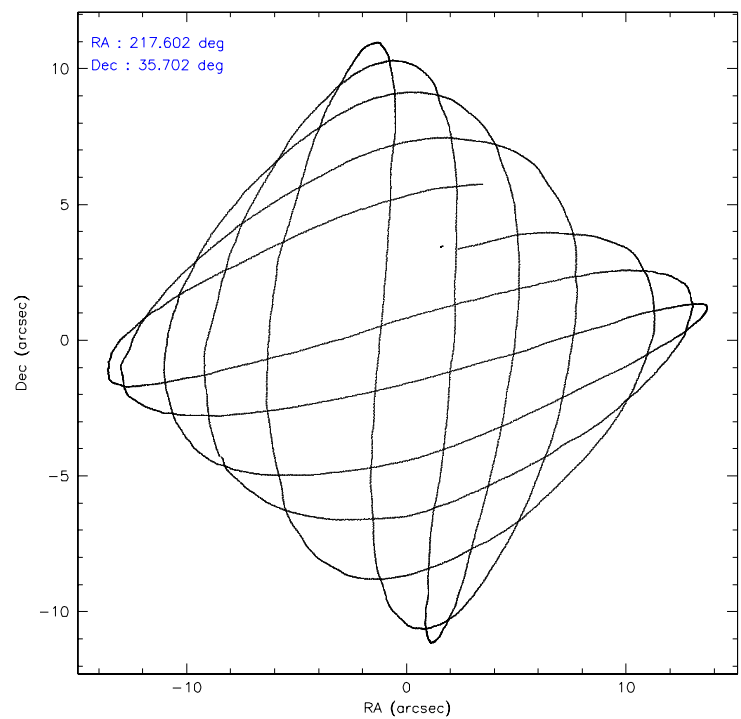
	ccd 0	ccd 1	ccd 2	ccd 3	ccd 6
level 1 events	23869	24845	26895	25700	27255
rejected events	20084	20810	23043	21959	22920
rejected %	84%	83%	85%	85%	84%

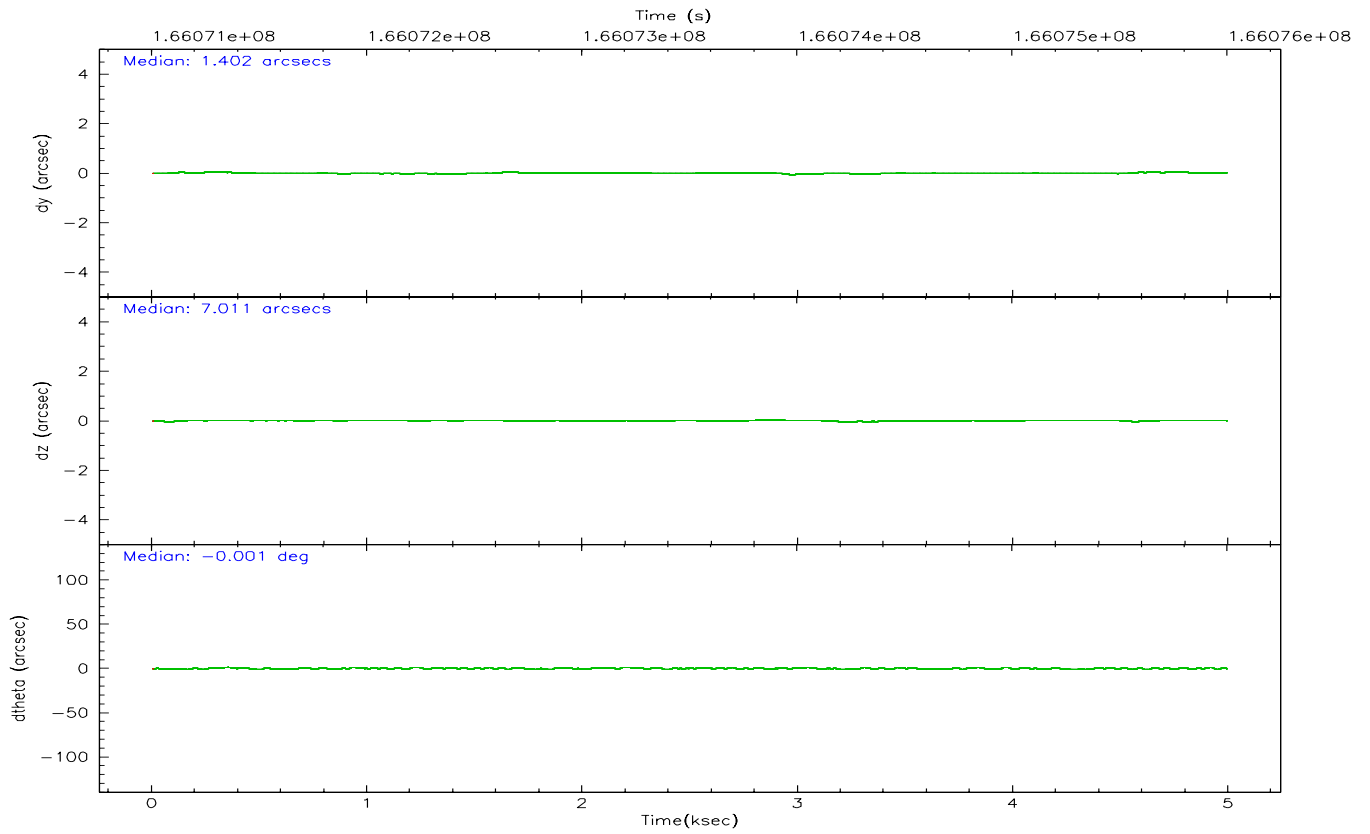
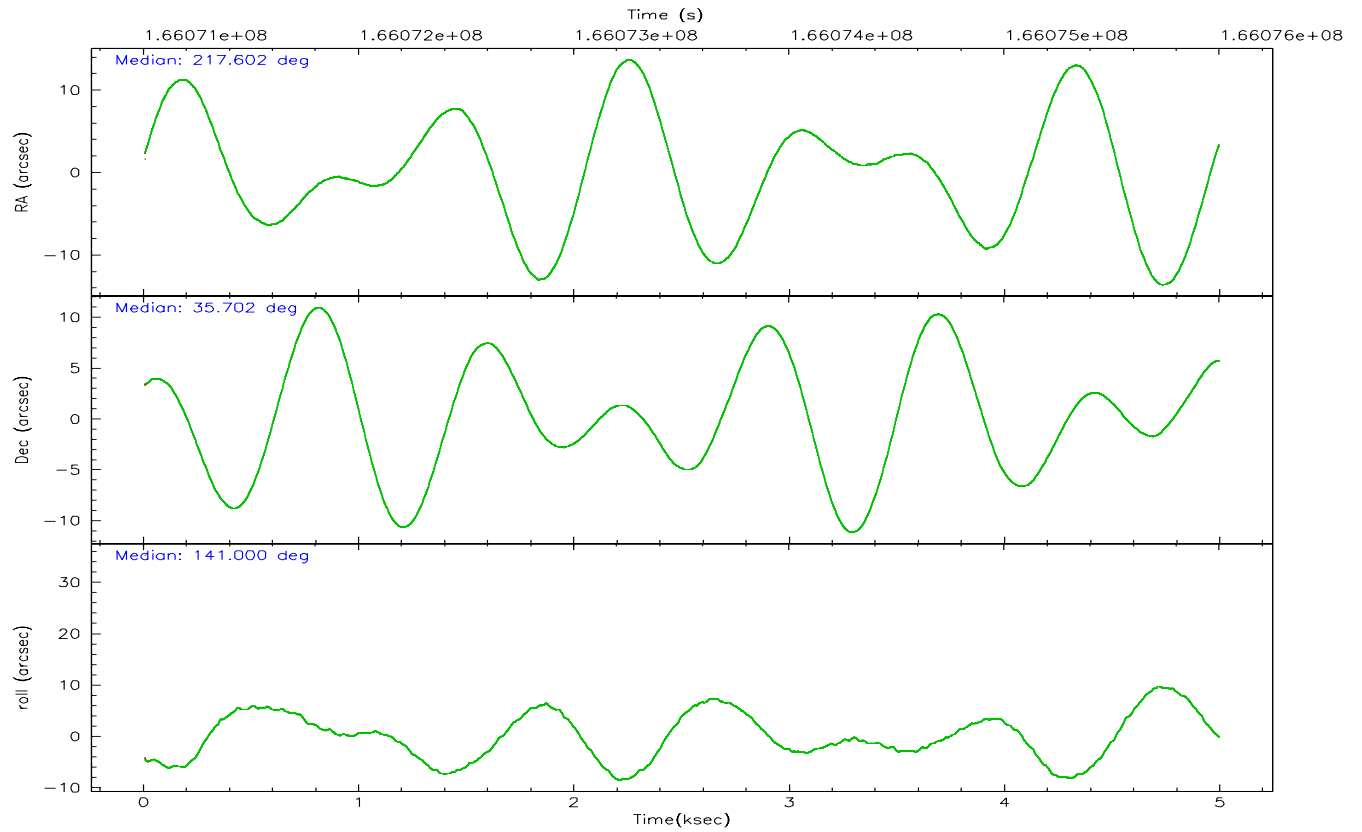
	ccd 0	ccd 1	ccd 2	ccd 3	ccd 6
grade 0 events	1954	1964	1960	1903	2311
	8%	7%	7%	7%	8%
grade 1 events	9	17	25	22	15
	0%	0%	0%	0%	0%
grade 2 events	658	679	687	647	684
	2%	2%	2%	2%	2%
grade 3 events	320	388	317	357	342
	1%	1%	1%	1%	1%
grade 4 events	302	364	350	321	340
	1%	1%	1%	1%	1%
grade 5 events	664	718	670	736	784
	2%	2%	2%	2%	2%
grade 6 events	553	640	541	515	662
	2%	2%	2%	2%	2%
grade 7 events	19409	20075	22345	21199	22117
	81%	80%	83%	82%	81%

2.2 Compared Parameters

Parameter	Planned	Actual	Parameter	Planned	Actual
Instrument	ACIS	ACIS	Obspar format version number	6	6
Detector	ACIS-01236	ACIS-01236	Obspar file type	PREDICTED	ACTUAL
Grating	NONE	NONE	Obspar update status	NONE	UPDATED
Data mode	VFAINT	VFAINT	On-chip summing requested	N	N
Observation mode	POINTING	POINTING	Subarray requested	NONE	NONE
Pointing RA	217.634736	217.6014044178754	Alternating exposures requested	N	N
Pointing Dec	35.697470	35.70162276245642	Primary exposure time	0.000000	3.1
Pointing Roll	140.782117	141.0102507106014			
SIM focus pos (mm)	-0.782348	-0.7809083437167272			
SIM defocus (mm)	0	0.001439871863259334			
SIM translation stage pos (mm)	-233.592463	-233.5874344608287			
SIM translation stage offset (mm)	0	-0.005018542100998502			
Observation start time	166071205.184000	166070829.02864			
Observation start date	2003-04-07T02:52:21	2003-04-07T02:47:09			
Observation end time	166076005.184000	166076139.55387			
Observation end date	2003-04-07T04:12:21	2003-04-07T04:15:39			
Read mode	TIMED	TIMED			

2.3 Aspect



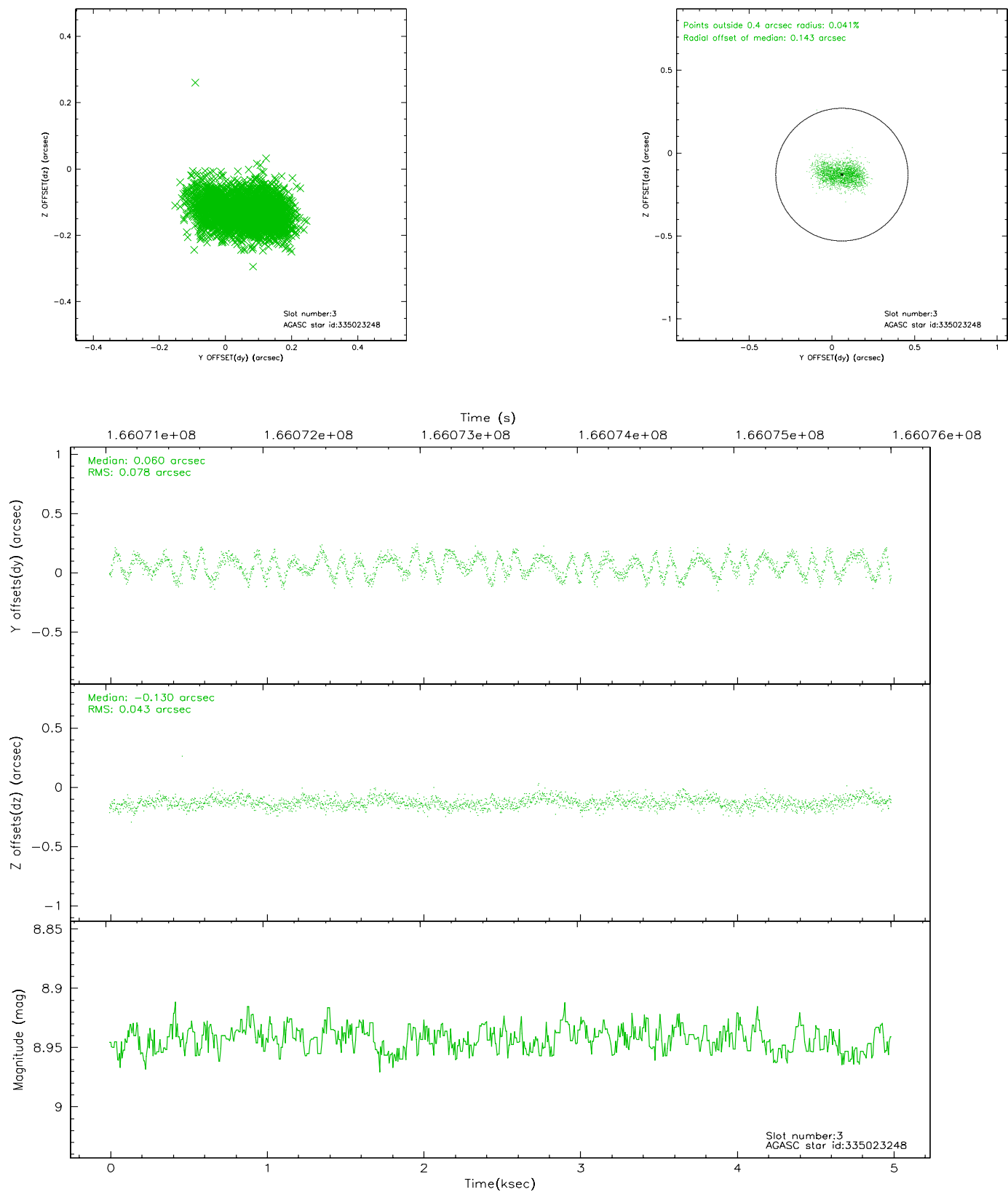


Slot Statistics

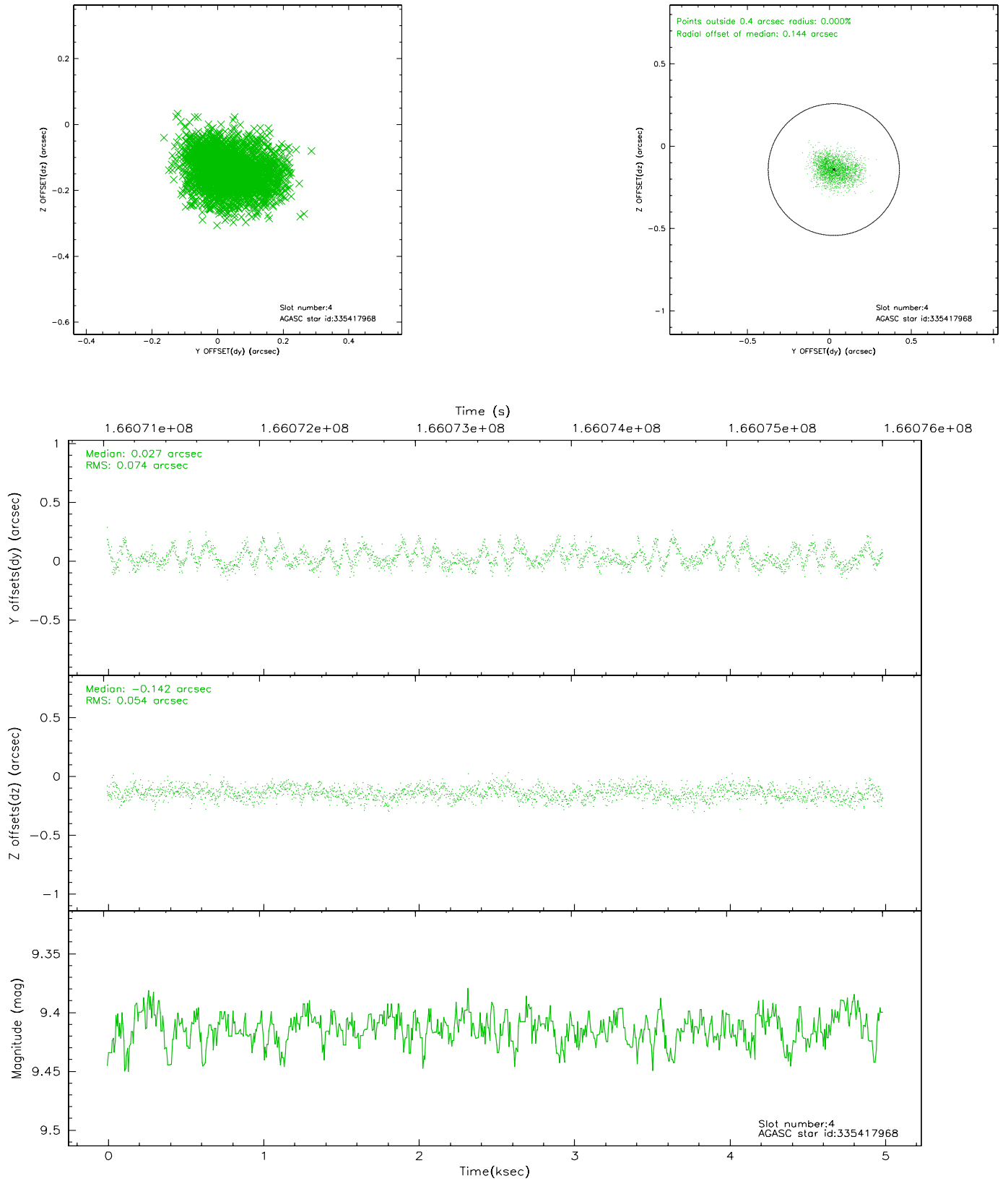
slot	status	id	mag	n_pts	med_dy	med_dz	dr1	dr2	ra	dec	mean_y	mean_z
0	FID	ACIS-I-1	7.25	1218	-0.010	0.038	0.006	0.010	0.000000	0.000000	938.40	-830.39
1	FID	ACIS-I-5	7.24	1217	-0.050	0.045	0.006	0.009	0.000000	0.000000	-1809.01	1066.57
2	FID	ACIS-I-6	7.27	1218	-0.031	-0.013	0.006	0.011	0.000000	0.000000	402.67	1712.34
3	GUIDE	335023248	8.94	2435	0.060	-0.130	0.097	0.151	217.634832	34.944512	-1714.30	2099.77
4	GUIDE	335417968	9.41	2435	0.027	-0.142	0.096	0.158	217.358149	35.055285	-830.46	2306.45
5	GUIDE	335418792	9.70	2434	0.029	0.055	0.109	0.180	217.469762	36.446912	2076.47	-1786.93
6	GUIDE	335421608	9.21	2434	-0.042	0.073	0.077	0.123	217.691874	36.359353	1379.80	-1950.94
7	GUIDE	335413776	8.93	2432	-0.076	0.150	0.085	0.145	218.421411	36.051962	-960.01	-2444.04

2.4 Star Slots

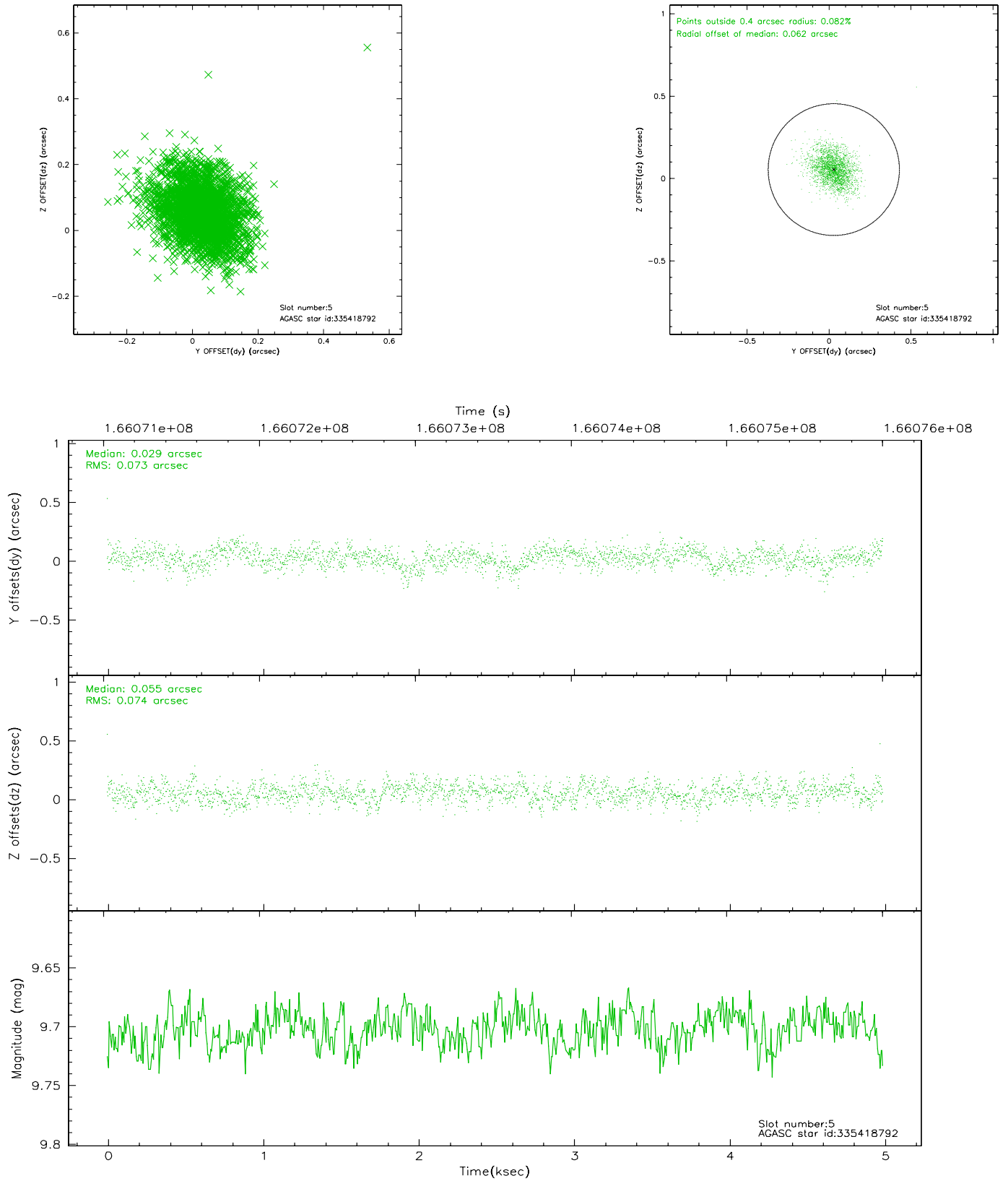
2.4.1 Slot 3



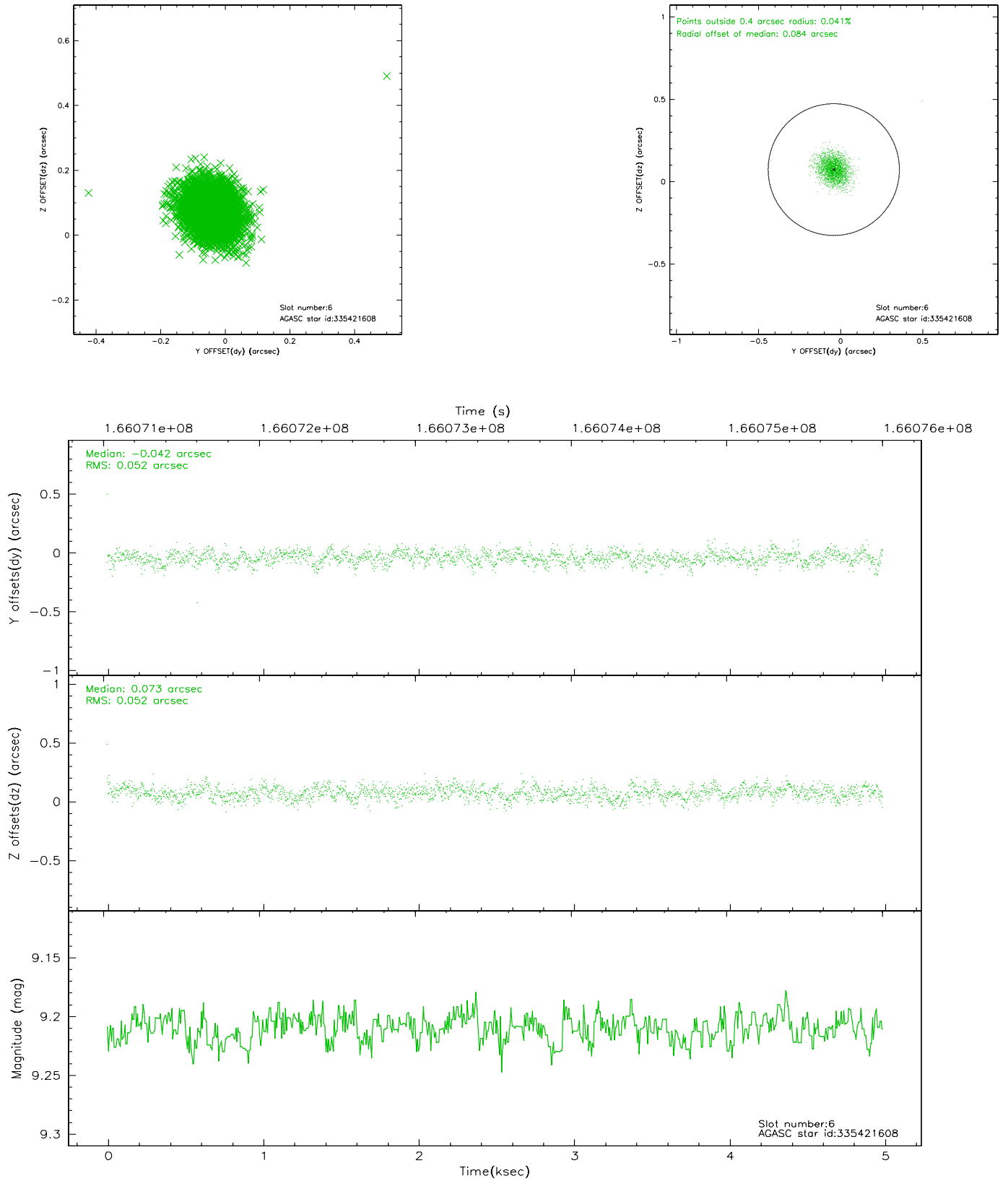
2.4.2 Slot 4



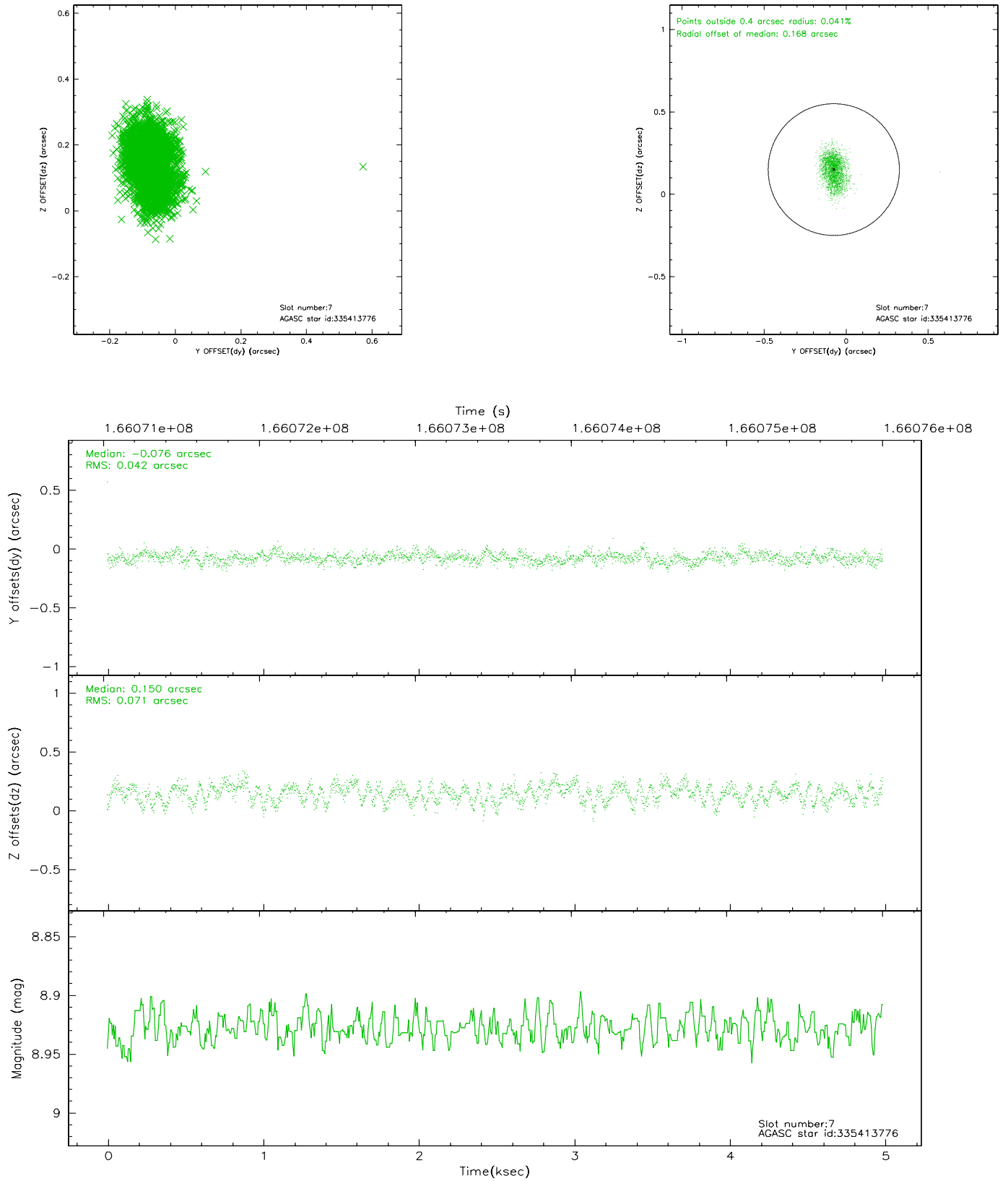
2.4.3 Slot 5



2.4.4 Slot 6

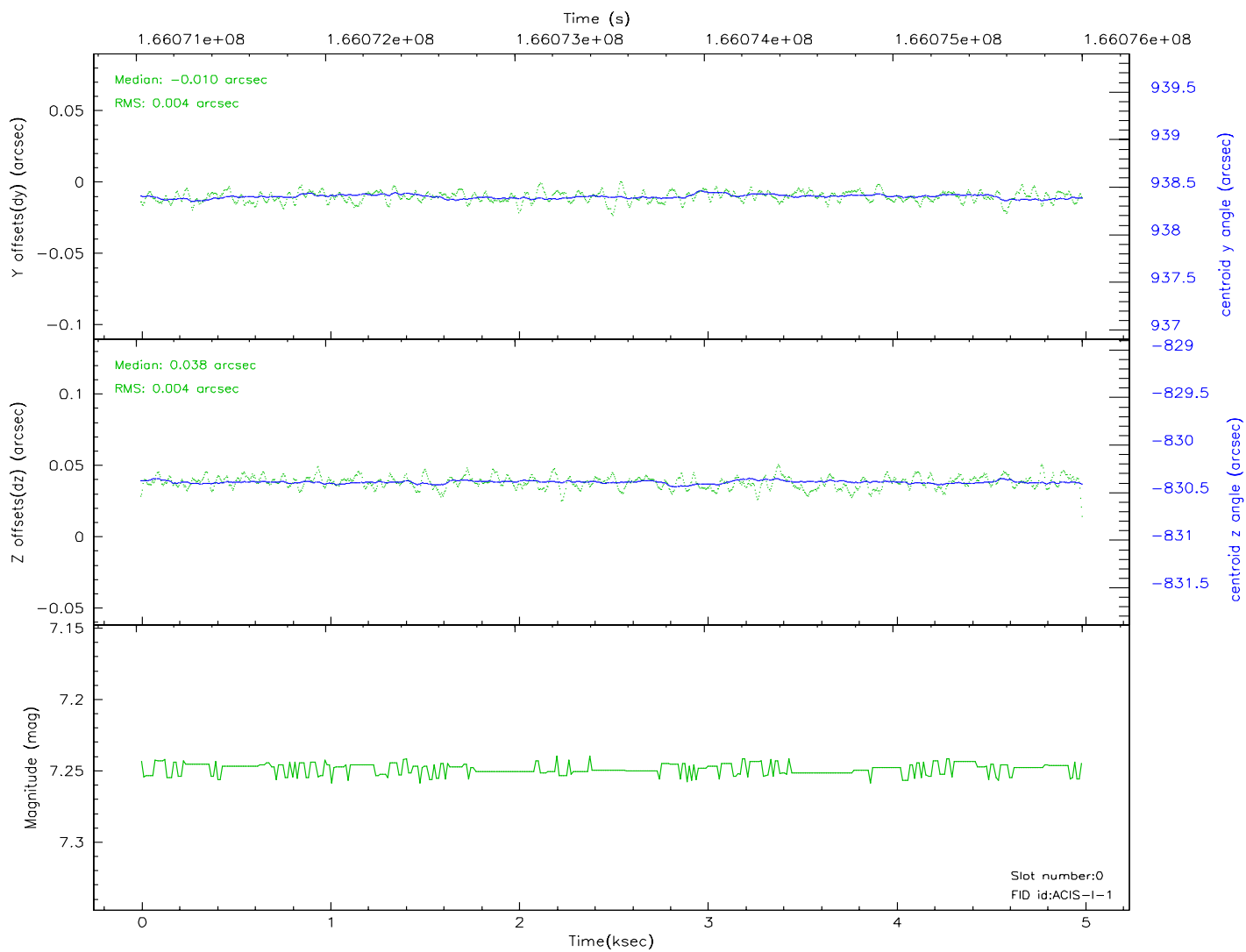
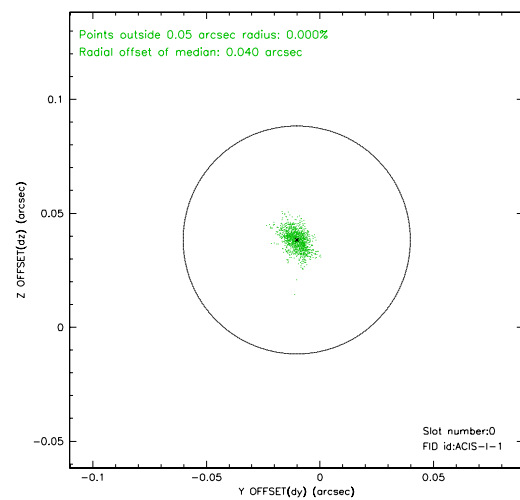
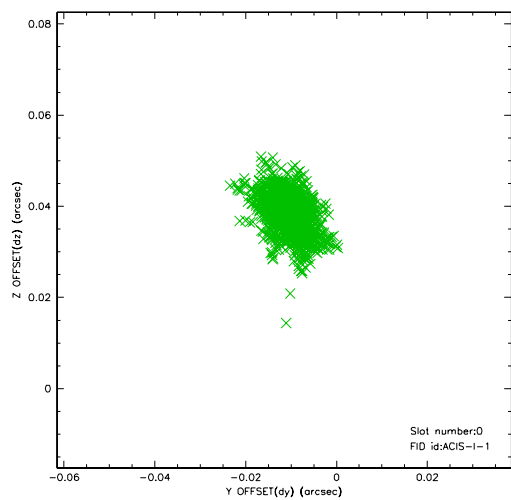


2.4.5 Slot 7

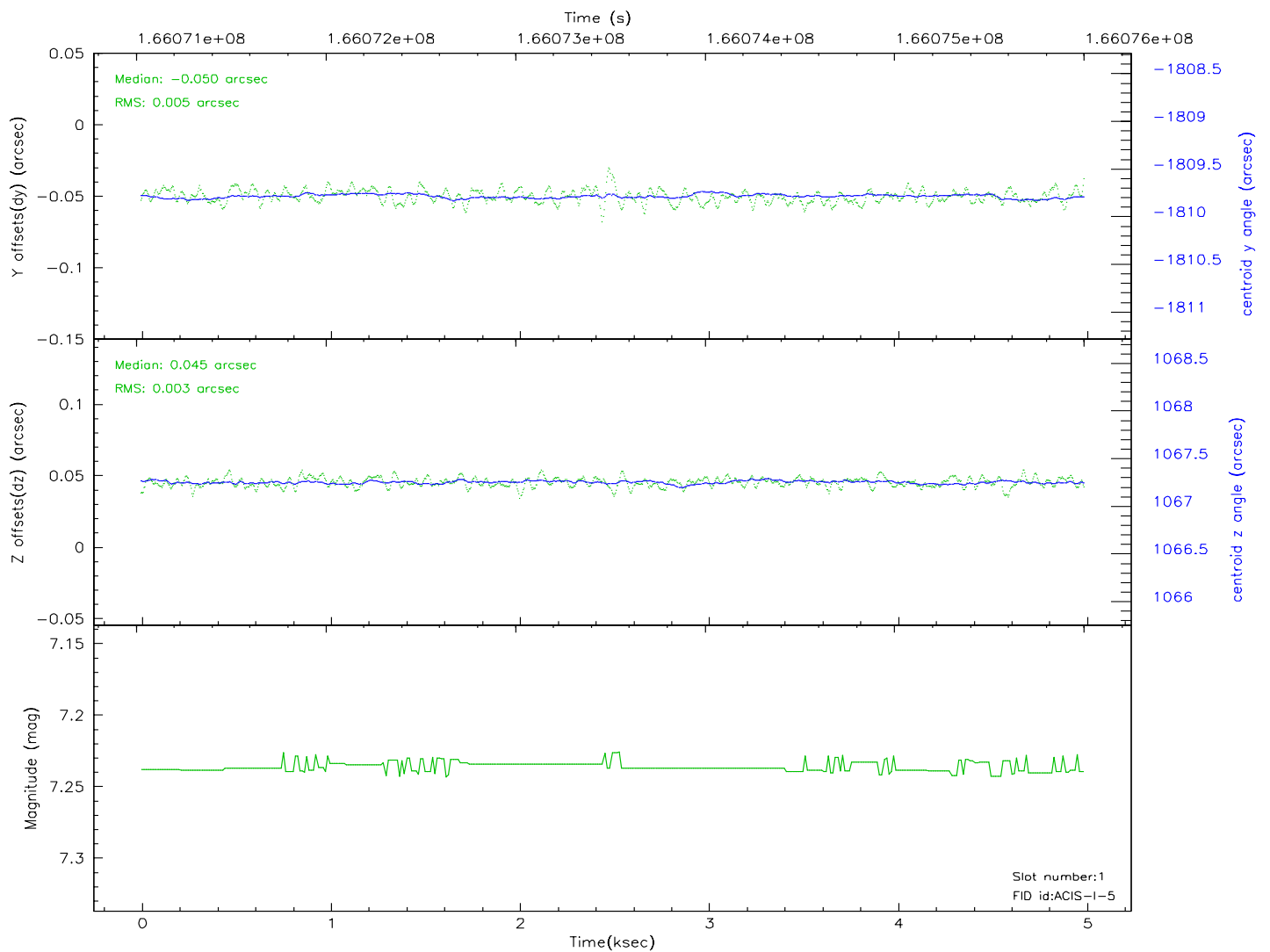
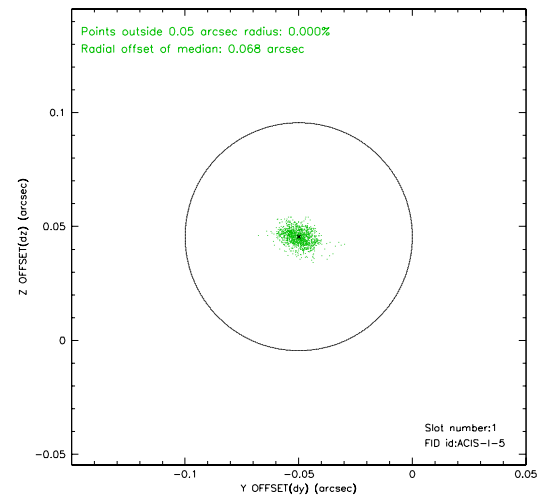
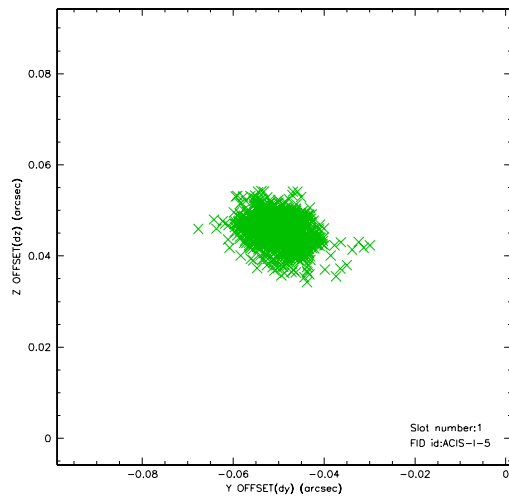


2.5 FID Slots

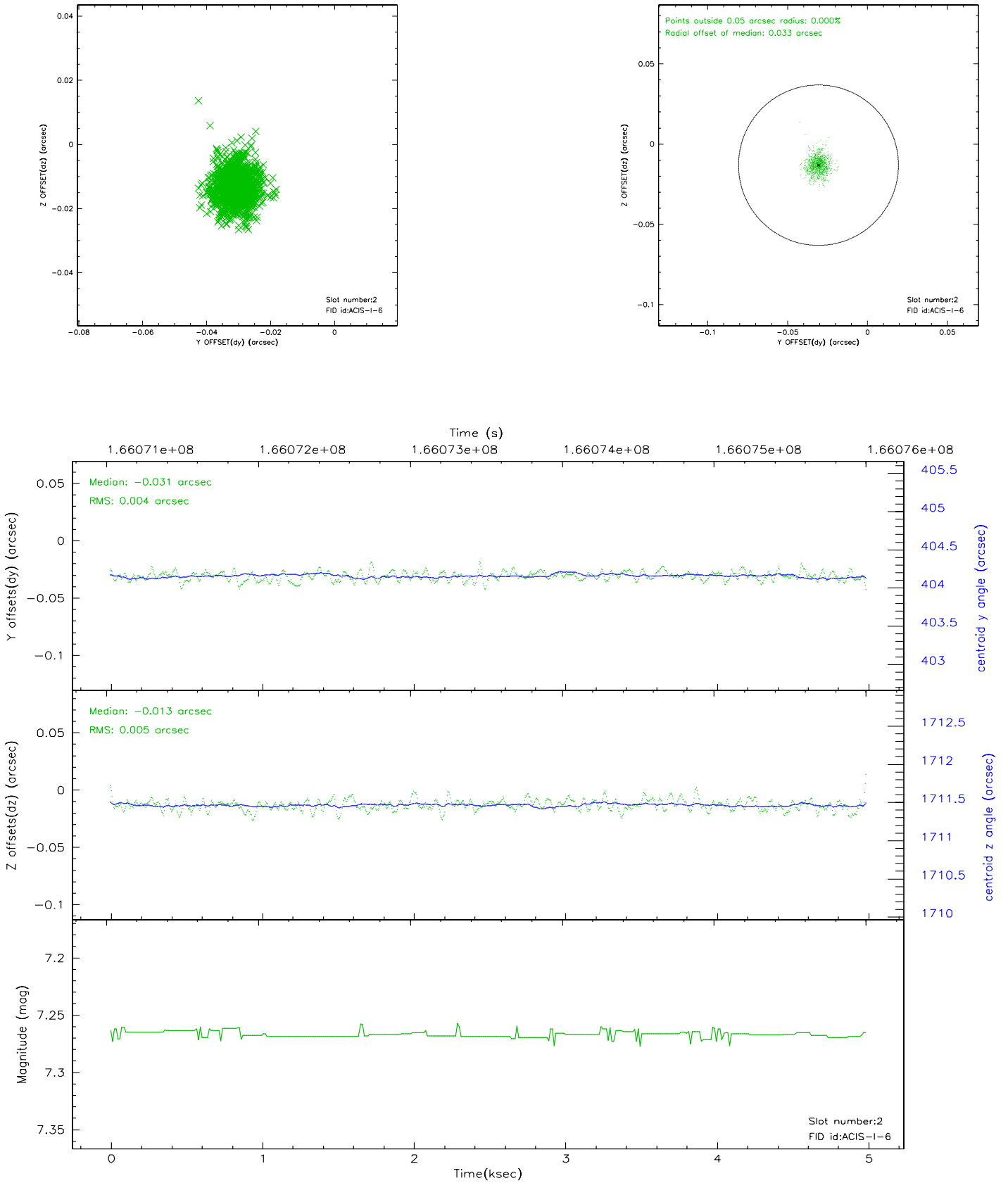
2.5.1 Slot 0



2.5.2 Slot 1

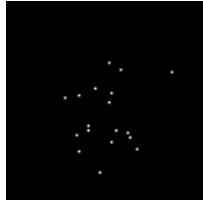


2.5.3 Slot 2



3 Point Sources

4.86 arcmin



A Summary

A.1 Status

V&V Scientist	Jen Lauer
V&V Date (YYYY-MM-DD)	2006.07.30
V&V Edition	1
V&V Disposition and Status	OK
V&V Charge Time	4.575

A.2 Comments