

# V&V Reference Report

## L2 ASCDS Version : 7.6.8

Observation 3597 - L2 Version 001  
Chandra X-Ray Center

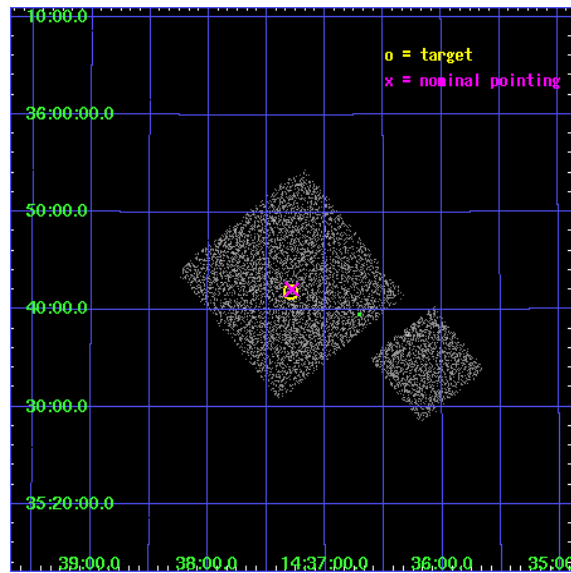
L2 Processing Date : Jul 30 2006

## Contents

<b>1</b>	<b>Front</b>	<b>2</b>
<b>2</b>	<b>OBI</b>	<b>3</b>
2.1	OBI . . . . .	3
2.1.1	Images . . . . .	3
2.1.2	Bias . . . . .	3
2.1.3	Parameters . . . . .	4
2.1.4	Events . . . . .	4
2.2	Compared Parameters . . . . .	5
2.3	Aspect . . . . .	6
2.4	Star Slots . . . . .	9
2.4.1	Slot 3 . . . . .	9
2.4.2	Slot 4 . . . . .	10
2.4.3	Slot 5 . . . . .	11
2.4.4	Slot 6 . . . . .	12
2.4.5	Slot 7 . . . . .	13
2.5	FID Slots . . . . .	14
2.5.1	Slot 0 . . . . .	14
2.5.2	Slot 1 . . . . .	15
2.5.3	Slot 2 . . . . .	16
<b>3</b>	<b>Point Sources</b>	<b>17</b>
<b>A</b>	<b>Summary</b>	<b>18</b>
A.1	Status . . . . .	18
A.2	Comments . . . . .	18

# 1 Front

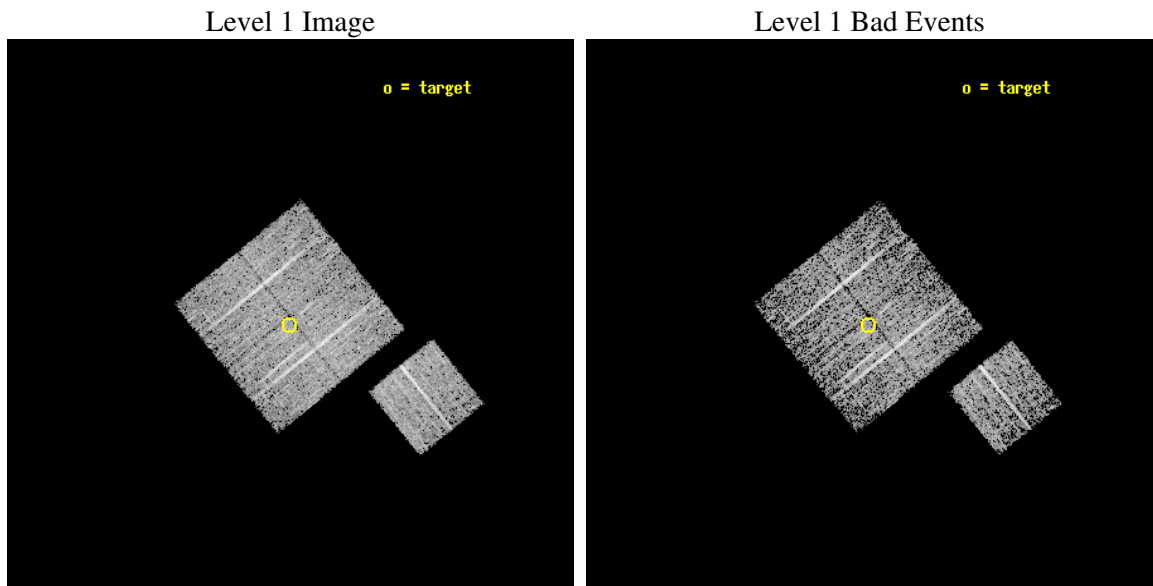
seq_num	900197
obs_id	3597
title	CHANDRA LARGE SCALE SURVEY OF THE NOAO BOOTES DEEP FIELD
observer	Dr. Stephen Murray
object	NOAO FIELD F45
dtcycle	0
cycle	P
ra_targ	219.323765
dec_targ	35.697552
ra_nom	219.32102369464
dec_nom	35.70159121162
roll_nom	141.0102936003
revision	2
ontime	4674.7999910116
livetime	4613.7202875914
ontime0	4674.7999910116
ontime1	4674.7999910116
ontime2	4674.7999910116
ontime3	4674.7999910116
ontime6	4674.7999910116
l2events	9308



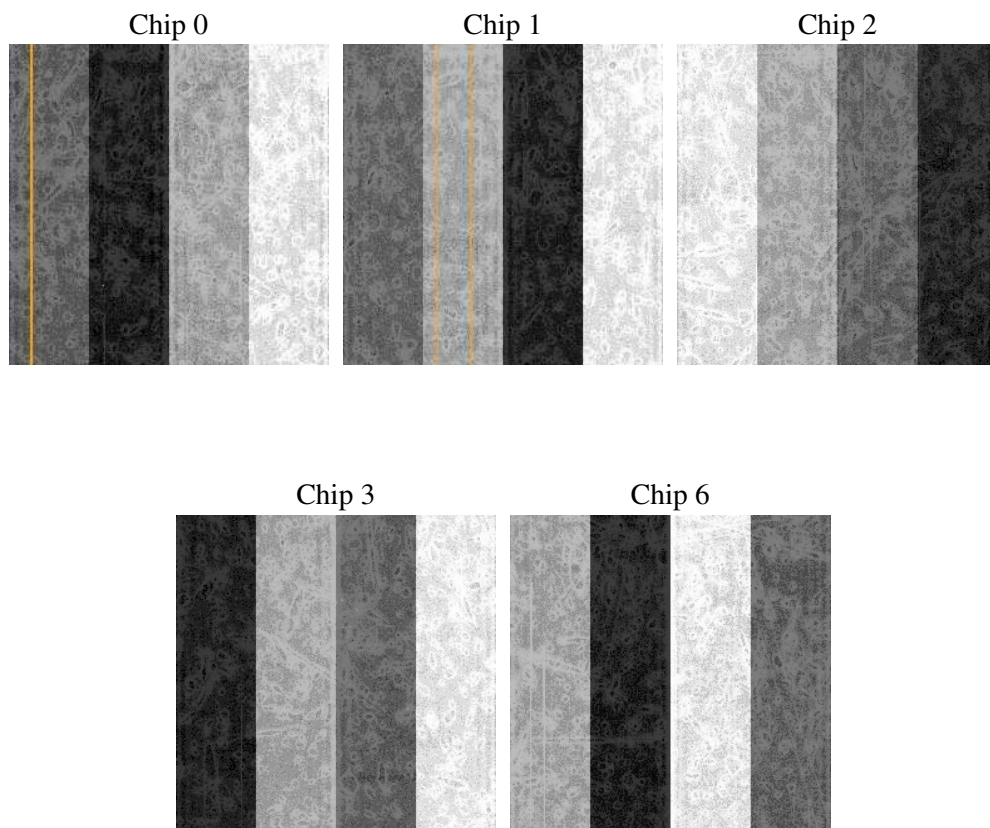
## 2 OBI

### 2.1 OBI

#### 2.1.1 Images



#### 2.1.2 Bias



### 2.1.3 Parameters

obi_num	1
ascdsver	7.6.8
caldbver	3.2.2
date	2006-07-30T05:36:39
revision	2

sched_exp_time	4900.000000
ontime	4680.0993274748
ontime0	4683.2403574884
ontime1	4683.2403375804
ontime2	4680.0993274748
ontime3	4680.0993274748
ontime6	4683.2403375804
l1events	115906

### 2.1.4 Events

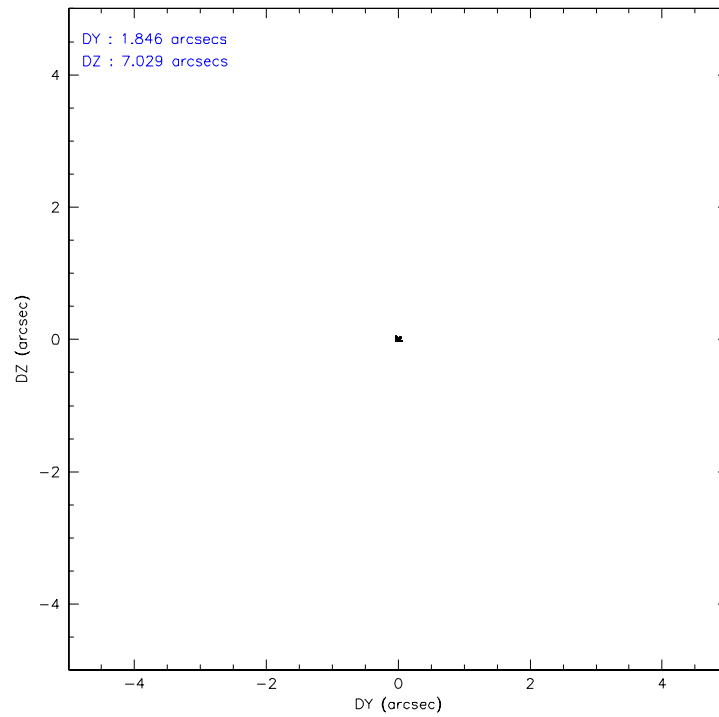
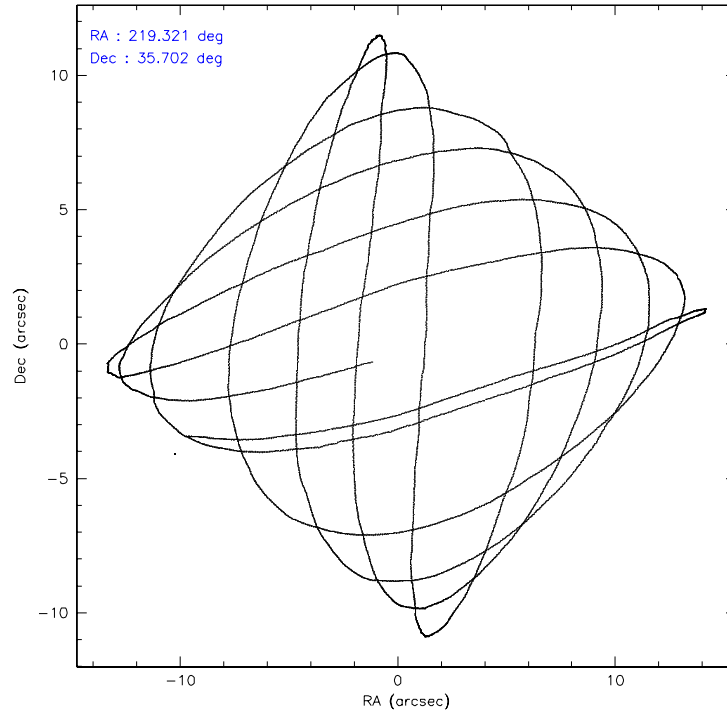
	ccd 0	ccd 1	ccd 2	ccd 3	ccd 6
level 1 events	21667	21737	24913	23910	23679
rejected events	19446	19336	22552	21777	21399
rejected %	89%	88%	90%	91%	90%

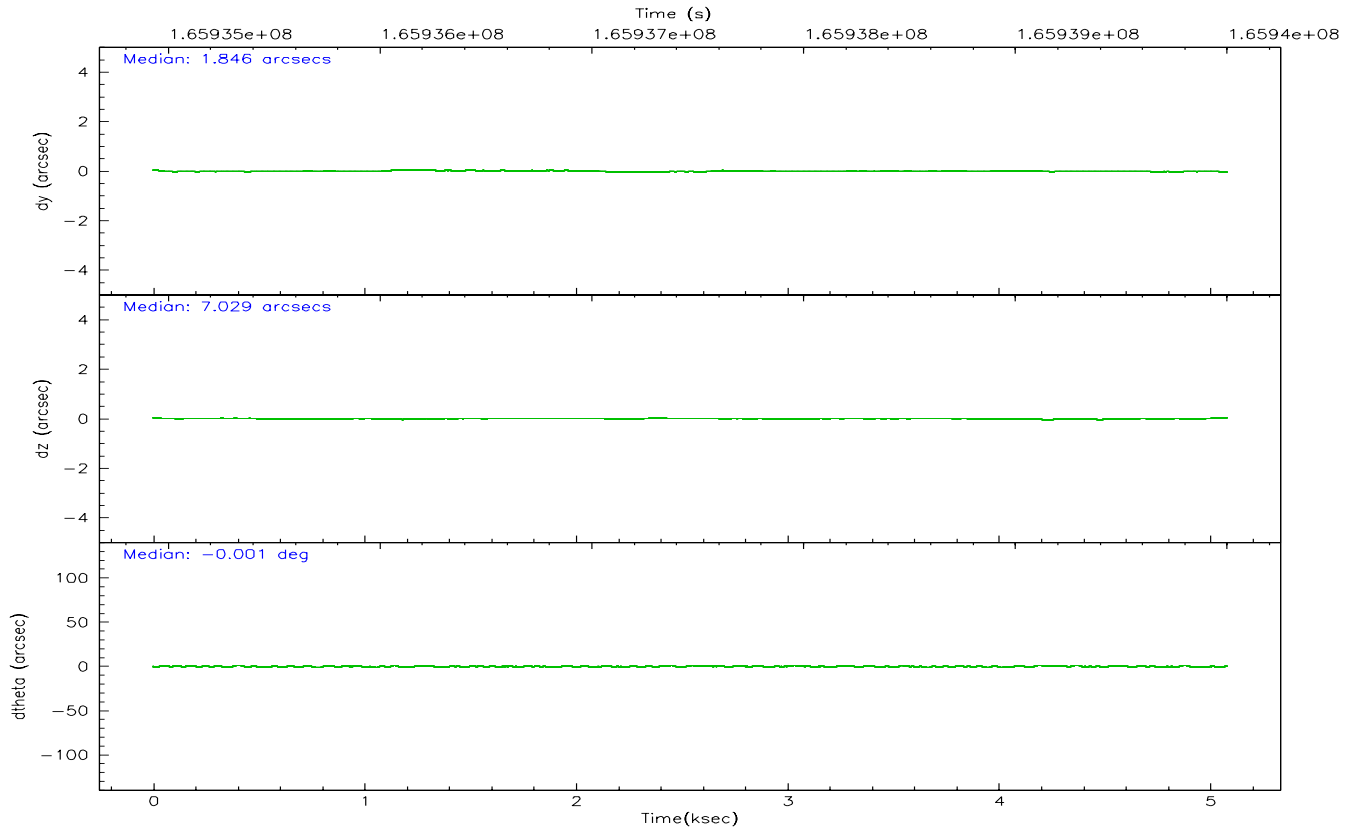
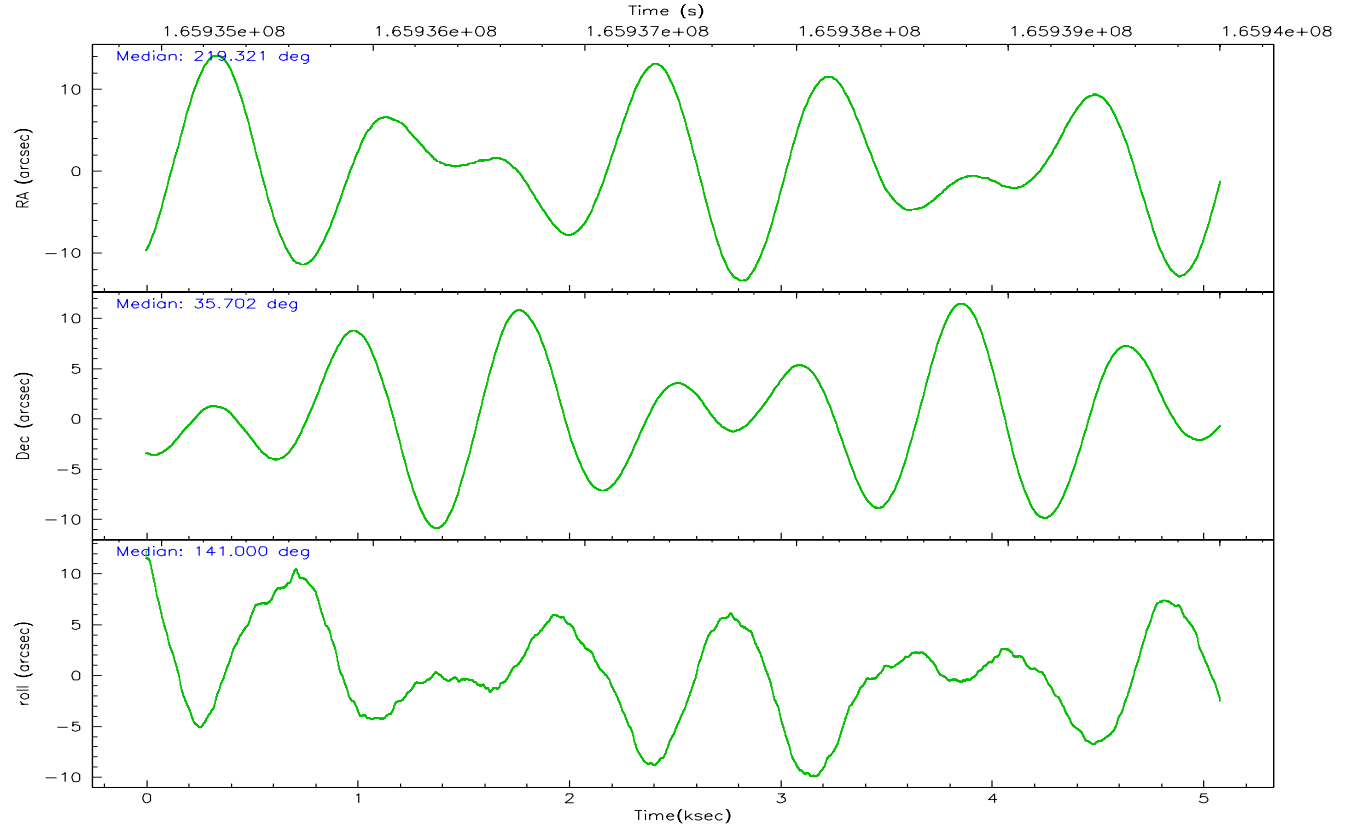
	ccd 0	ccd 1	ccd 2	ccd 3	ccd 6
grade 0 events	768	854	869	786	822
	3%	3%	3%	3%	3%
grade 1 events	13	5	15	9	14
	0%	0%	0%	0%	0%
grade 2 events	485	507	542	460	461
	2%	2%	2%	1%	1%
grade 3 events	267	261	291	241	259
	1%	1%	1%	1%	1%
grade 4 events	247	275	253	234	295
	1%	1%	1%	0%	1%
grade 5 events	672	741	605	791	812
	3%	3%	2%	3%	3%
grade 6 events	455	508	406	413	450
	2%	2%	1%	1%	1%
grade 7 events	18760	18586	21932	20976	20566
	86%	85%	88%	87%	86%

## 2.2 Compared Parameters

Parameter	Planned	Actual	Parameter	Planned	Actual
Instrument	ACIS	ACIS	Obspar format version number	6	6
Detector	ACIS-01236	ACIS-01236	Obspar file type	PREDICTED	ACTUAL
Grating	NONE	NONE	Obspar update status	NONE	UPDATED
Data mode	VFAINT	VFAINT	On-chip summing requested	N	N
Observation mode	POINTING	POINTING	Subarray requested	NONE	NONE
Pointing RA	219.354406	219.3210236946368	Alternating exposures requested	N	N
Pointing Dec	35.697471	35.70159121161997	Primary exposure time	0.000000	3.1
Pointing Roll	140.782116	141.0102936002991			
SIM focus pos (mm)	-0.782348	-0.7809083437167272			
SIM defocus (mm)	0	0.001439871863259334			
SIM translation stage pos (mm)	-233.592463	-233.5874344608287			
SIM translation stage offset (mm)	0	-0.005018542100998502			
Observation start time	165935107.184000	165934730.5479			
Observation start date	2003-04-05T13:04:03	2003-04-05T12:58:50			
Observation end time	165940007.184000	165940188.16063			
Observation end date	2003-04-05T14:25:43	2003-04-05T14:29:48			
Read mode	TIMED	TIMED			

## 2.3 Aspect





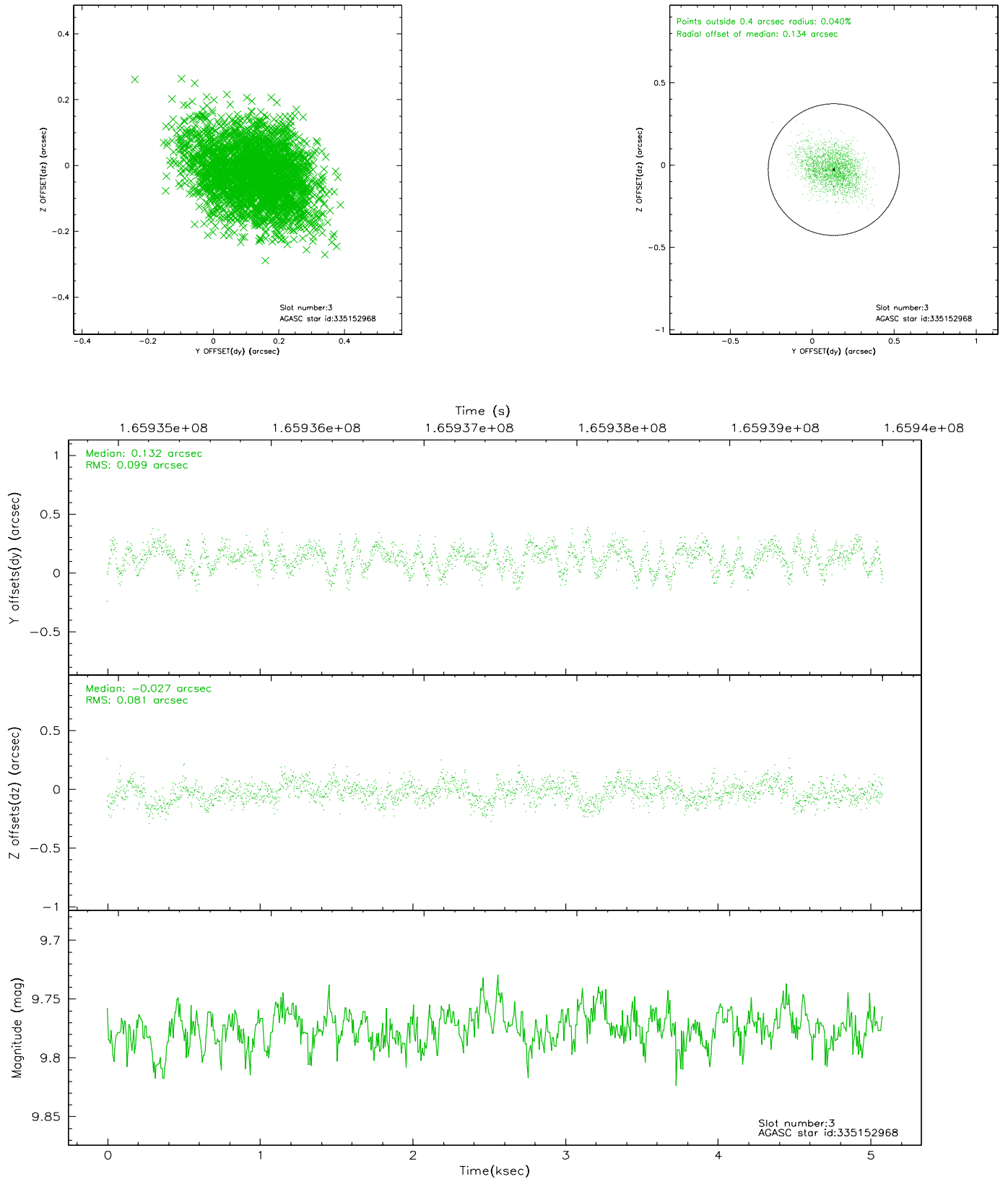
### Slot Statistics

slot	status	id	mag	n_pts	med_dy	med_dz	dr1	dr2	ra	dec	mean_y	mean_z
0	FID	ACIS-I-1	7.25	1240	-0.012	0.039	0.006	0.011	0.000000	0.000000	937.94	-830.41
1	FID	ACIS-I-5	7.24	1240	-0.045	0.046	0.005	0.009	0.000000	0.000000	-1809.48	1066.56
2	FID	ACIS-I-6	7.26	1240	-0.035	-0.015	0.006	0.010	0.000000	0.000000	402.24	1712.31
3	GUIDE	335152968	9.77	2480	0.132	-0.027	0.138	0.225	219.446087	34.867883	-2098.44	2142.34
4	GUIDE	335546608	10.05	2398	0.151	-0.033	0.128	0.228	219.906522	35.245587	-2283.81	231.25
5	GUIDE	335549864	7.51	2480	0.047	0.070	0.063	0.108	219.286726	35.929745	680.84	-522.75
6	GUIDE	335551264	9.26	2479	-0.219	0.214	0.096	0.158	219.547096	36.423006	1219.98	-2376.64
7	GUIDE	335414336	8.98	2470	-0.111	-0.232	0.089	0.142	218.979022	35.090910	-522.66	2388.10

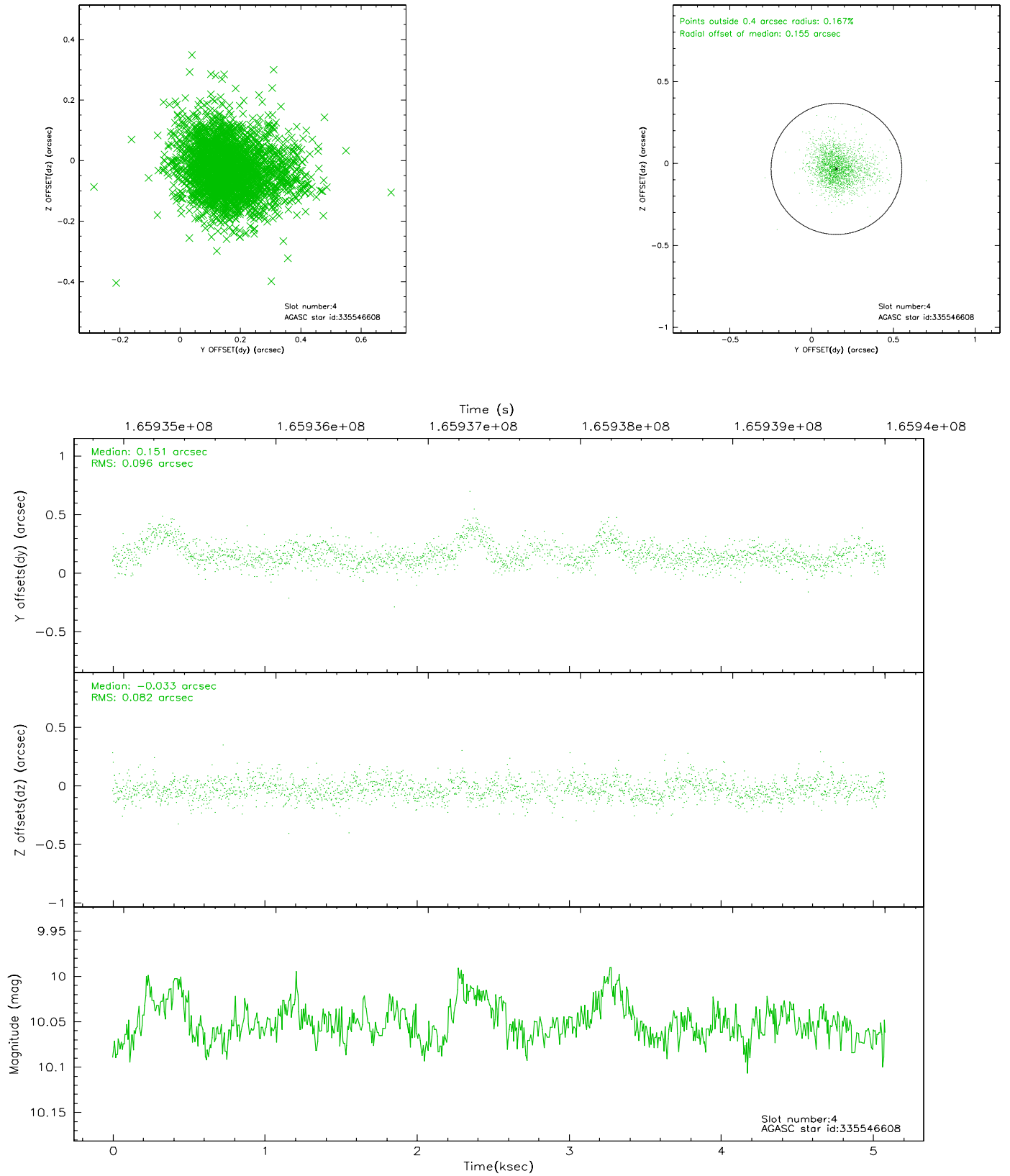


## 2.4 Star Slots

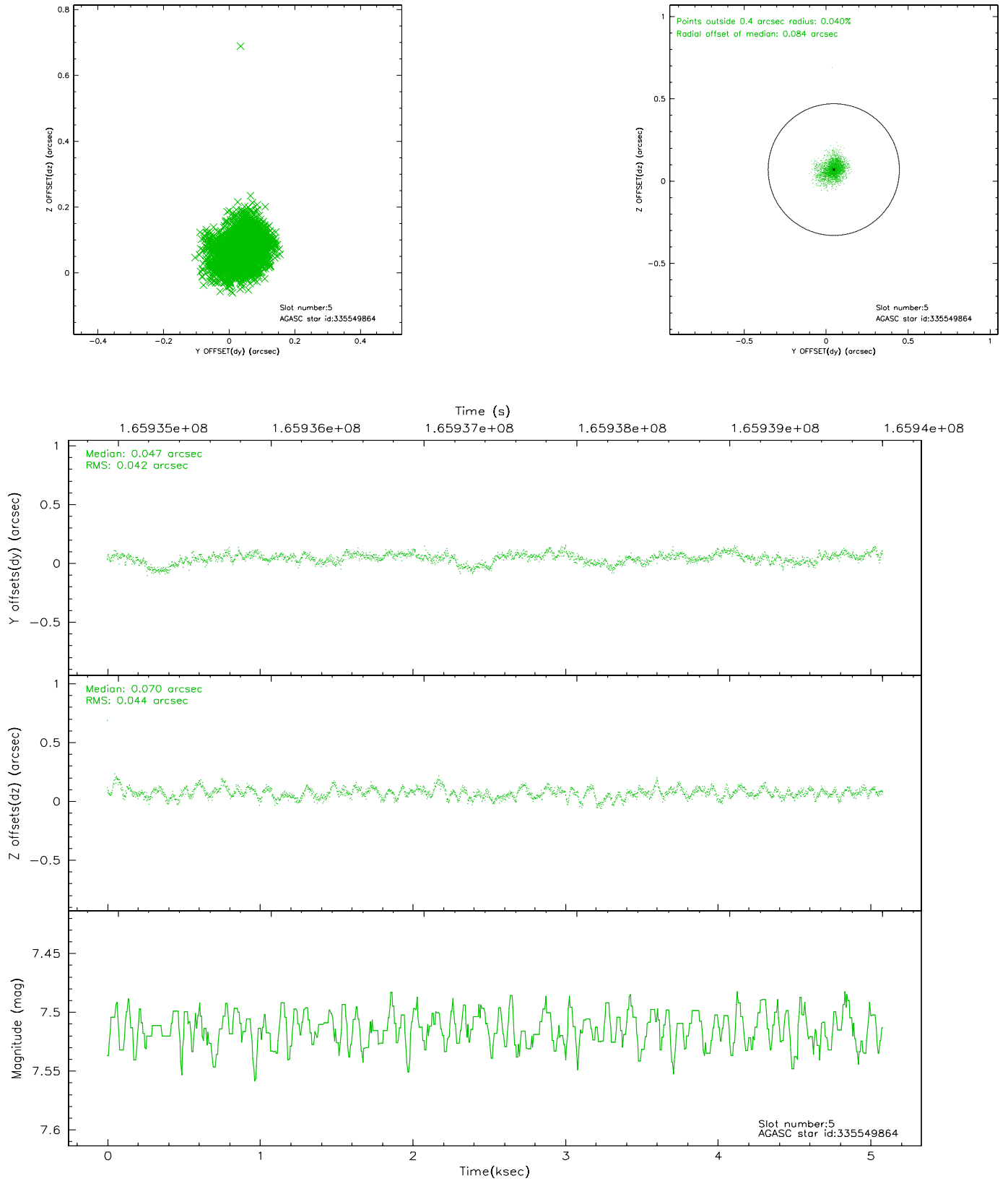
### 2.4.1 Slot 3



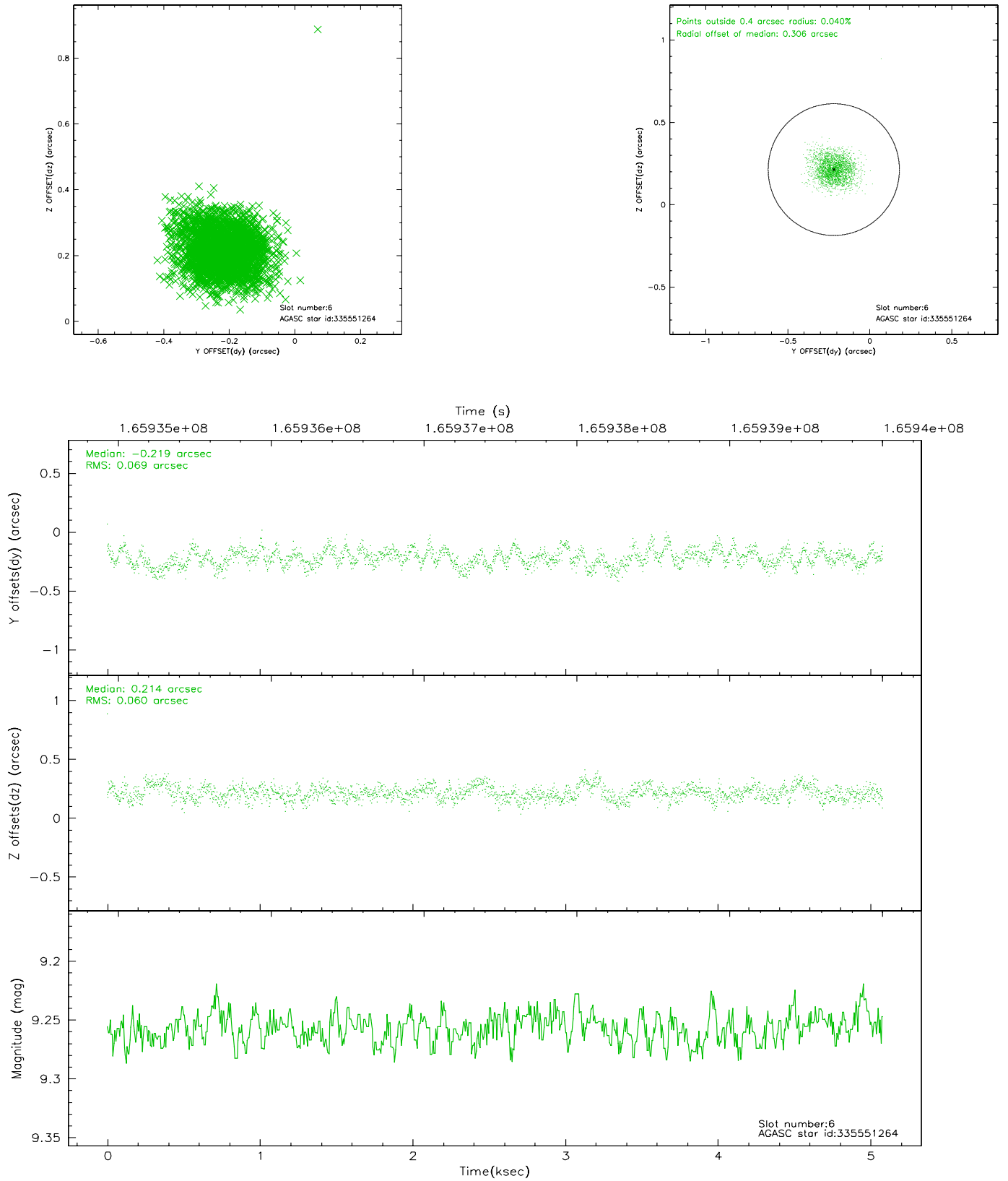
## 2.4.2 Slot 4



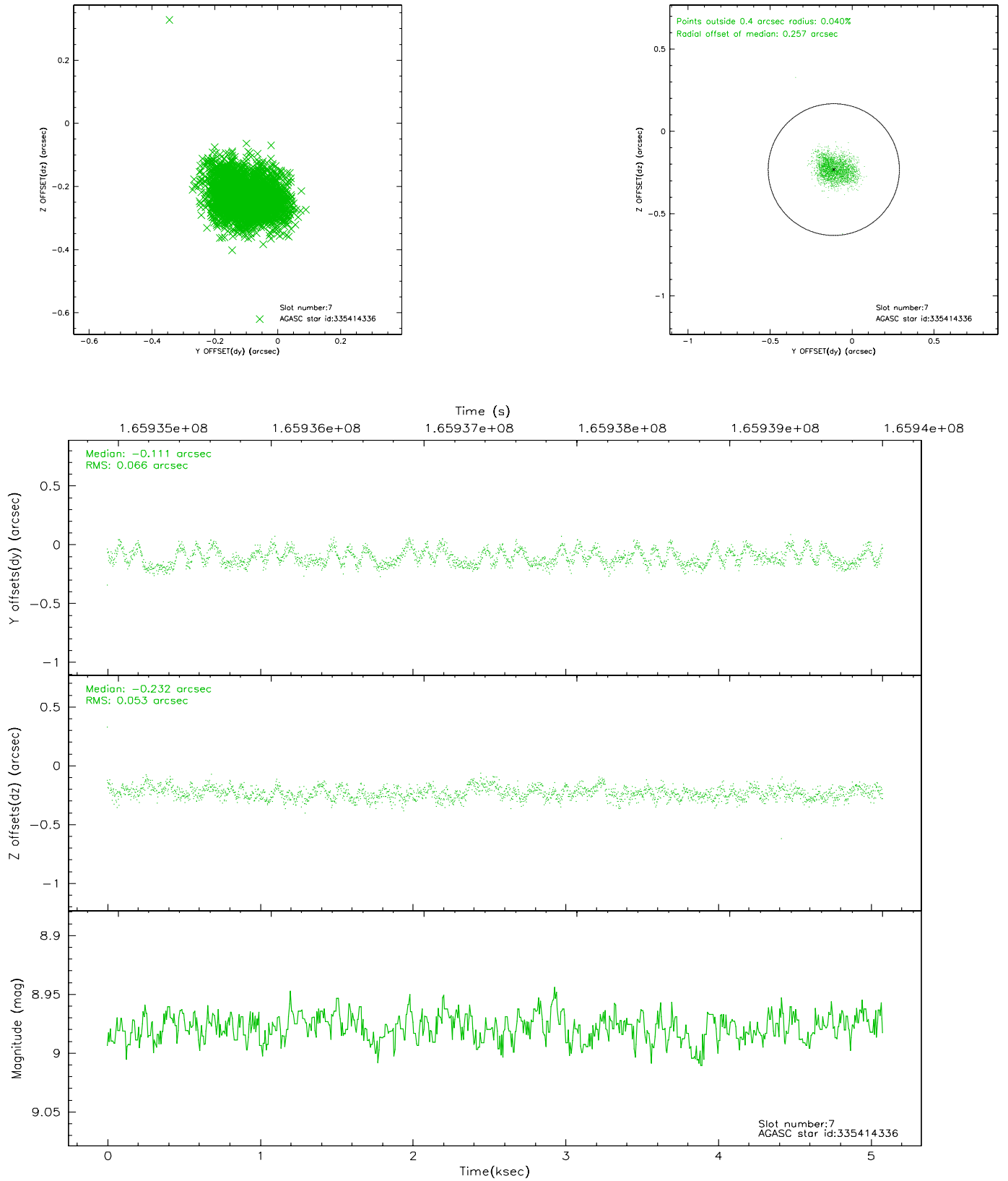
### 2.4.3 Slot 5



## 2.4.4 Slot 6

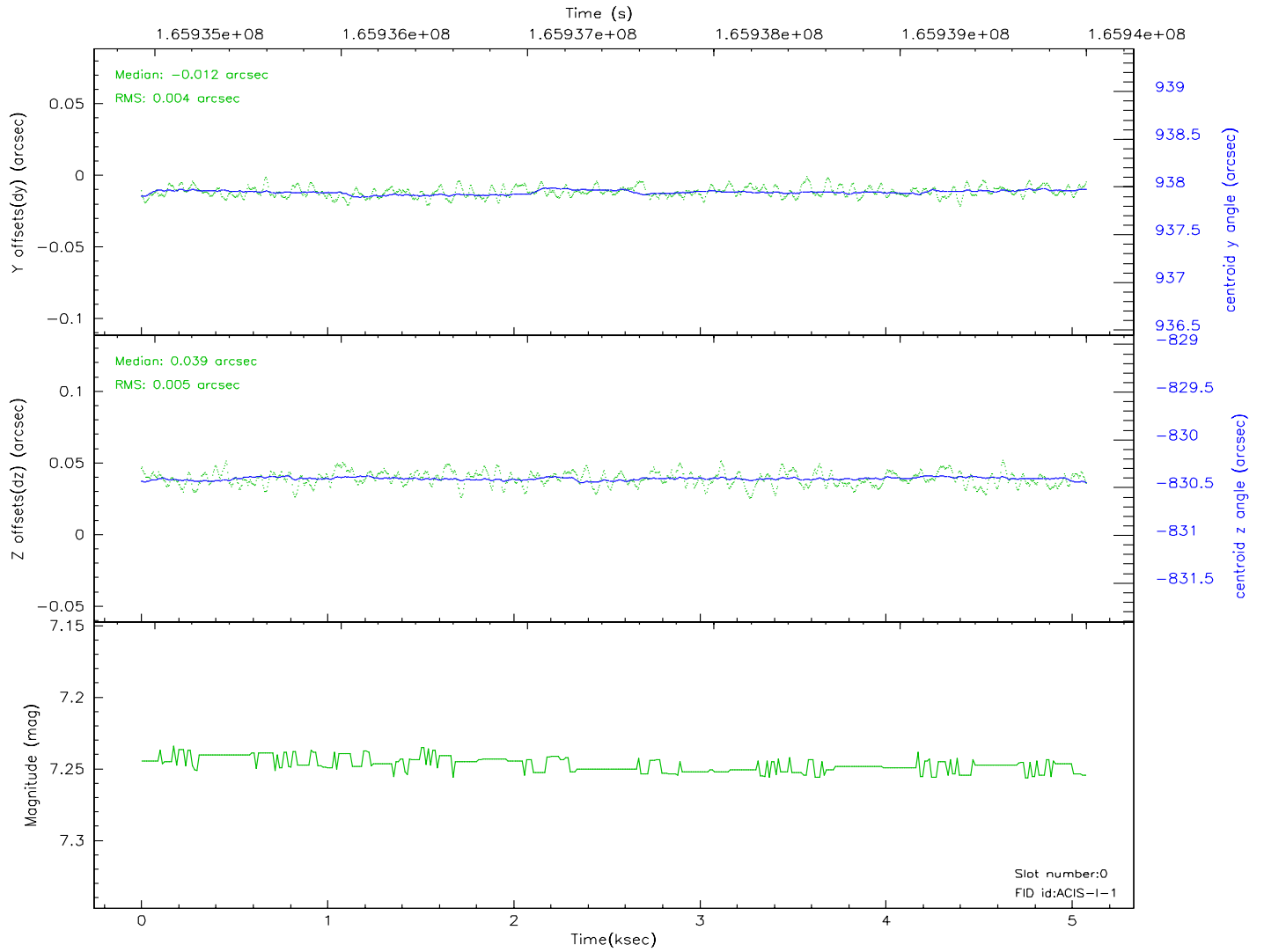
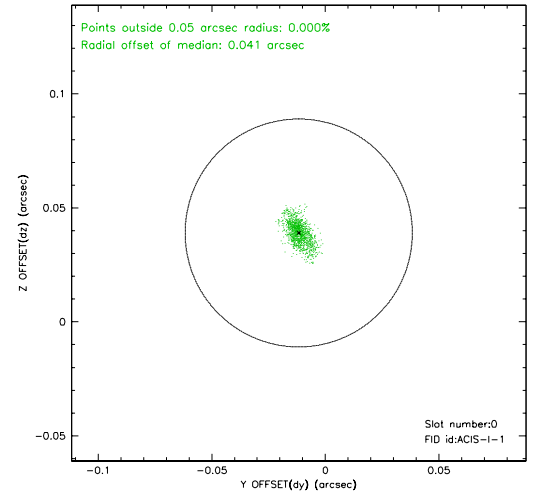
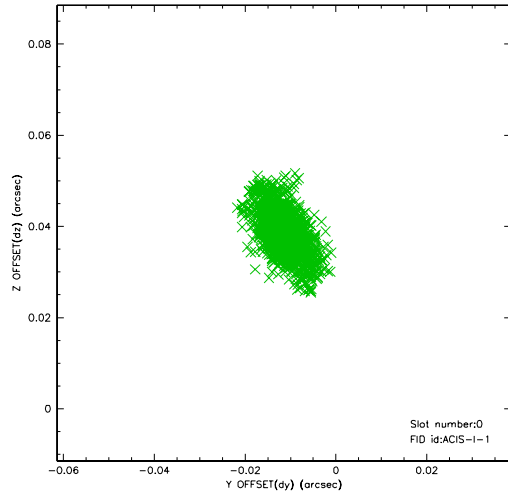


## 2.4.5 Slot 7

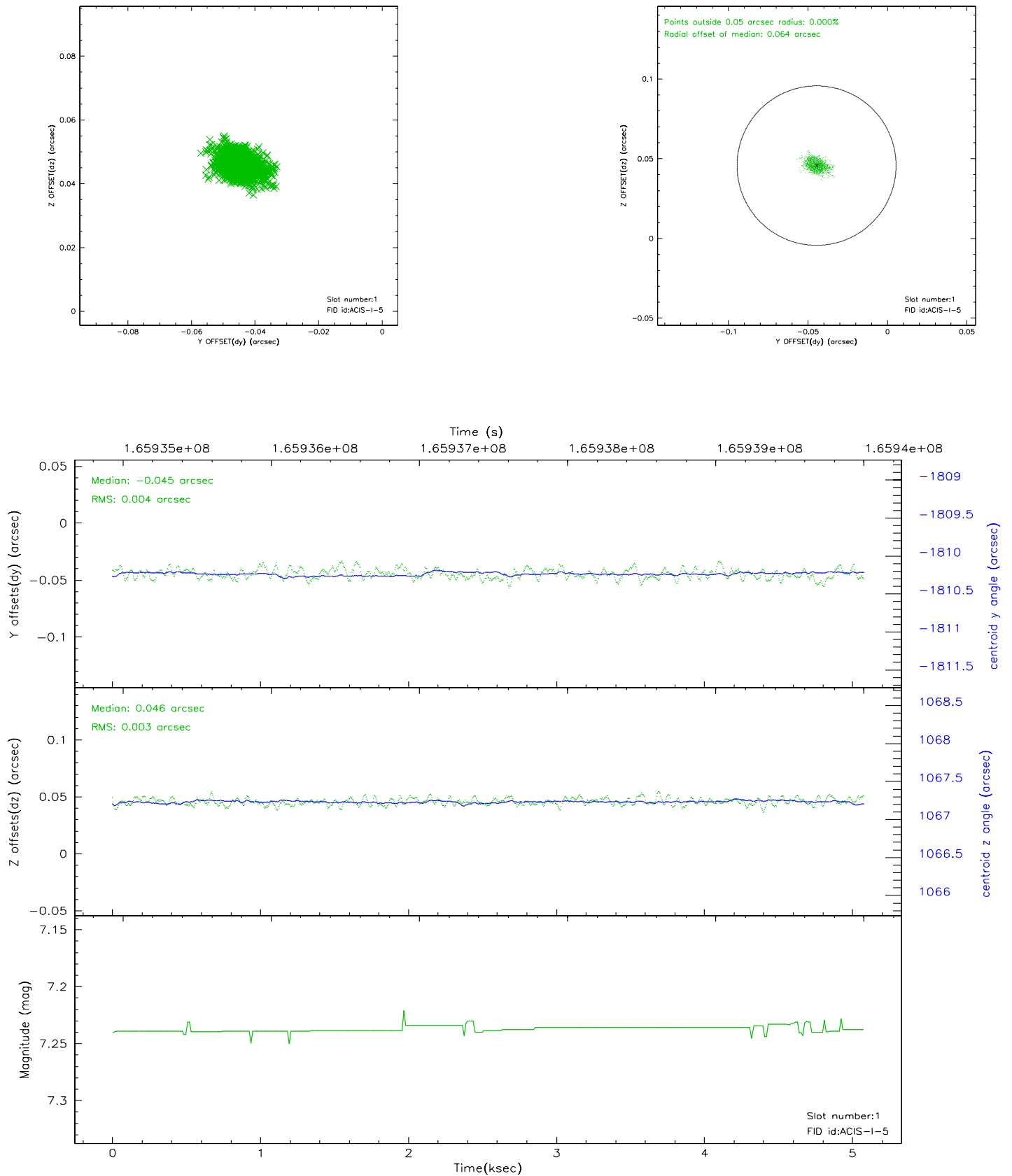


## 2.5 FID Slots

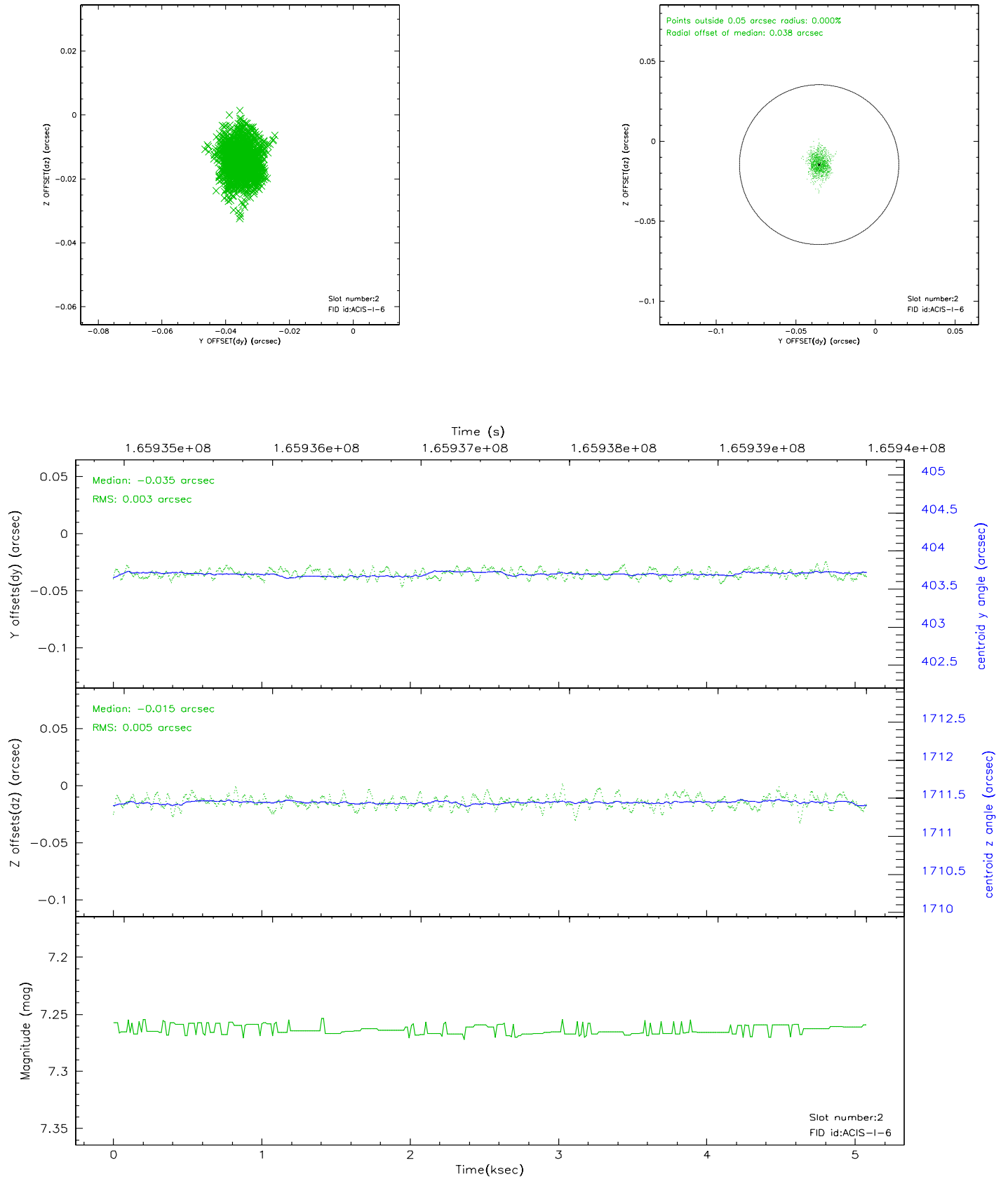
### 2.5.1 Slot 0



## 2.5.2 Slot 1



### 2.5.3 Slot 2





### 3 Point Sources

7.55 arcmin



## A Summary

### A.1 Status

V&V Scientist	Jen Lauer
V&V Date (YYYY-MM-DD)	2006.07.30
V&V Edition	1
V&V Disposition and Status	OK
V&V Charge Time	4.675

### A.2 Comments