

V&V Reference Report

L2 ASCDS Version : 7.6.8

Observation 3596 - L2 Version 001
Chandra X-Ray Center

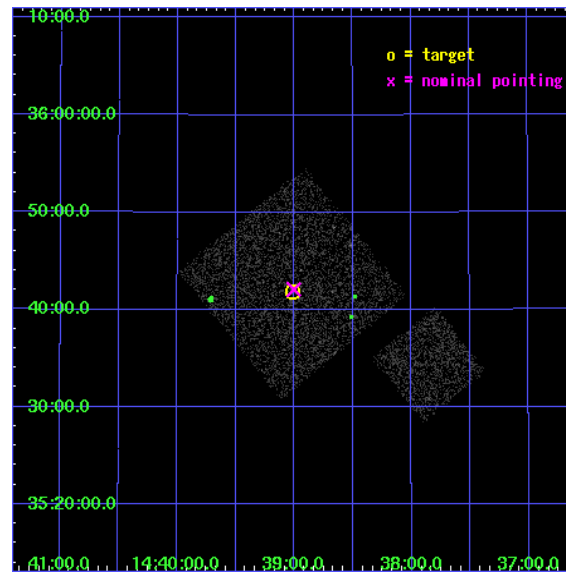
L2 Processing Date : Jul 30 2006

Contents

1	Front	2
2	OBI	3
2.1	OBI	3
2.1.1	Images	3
2.1.2	Bias	3
2.1.3	Parameters	4
2.1.4	Events	4
2.2	Compared Parameters	5
2.3	Aspect	6
2.4	Star Slots	9
2.4.1	Slot 3	9
2.4.2	Slot 4	10
2.4.3	Slot 5	11
2.4.4	Slot 6	12
2.4.5	Slot 7	13
2.5	FID Slots	14
2.5.1	Slot 0	14
2.5.2	Slot 1	15
2.5.3	Slot 2	16
3	Point Sources	17
A	Summary	18
A.1	Status	18
A.2	Comments	18

1 Front

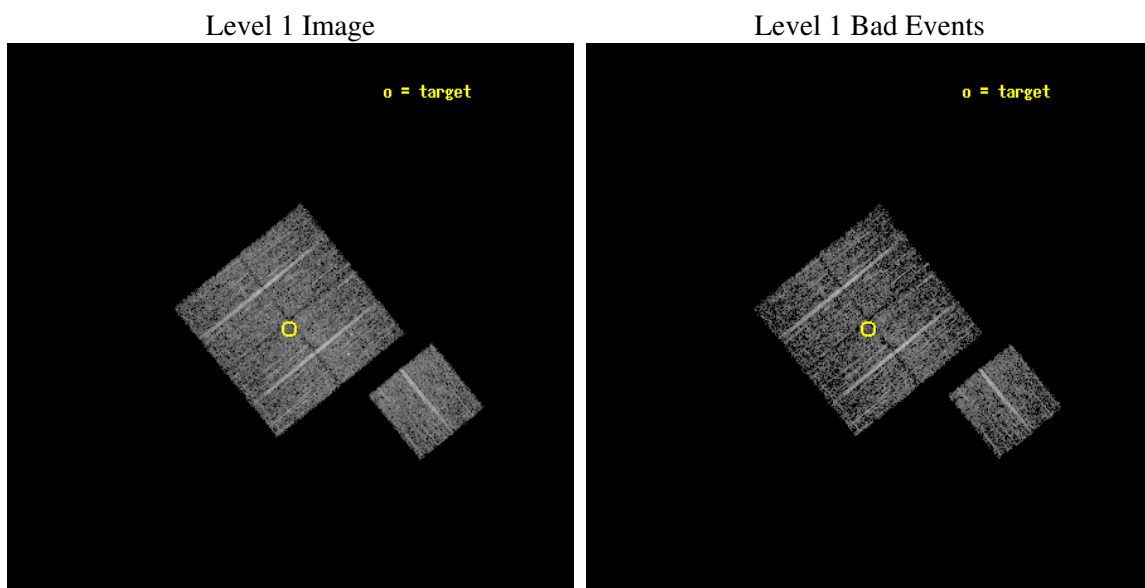
seq_num	900196
obs_id	3596
title	CHANDRA LARGE SCALE SURVEY OF THE NOAO BOOTES DEEP FIELD
observer	Dr. Stephen Murray
object	NOAO FIELD F56
dtcycle	0
cycle	P
ra_targ	219.753682
dec_targ	35.697552
ra_nom	219.75095738423
dec_nom	35.70162215423
roll_nom	141.01026107114
revision	2
ontime	4671.65899086
livetime	4610.6203269191
ontime0	4674.7999910116
ontime1	4674.7999910116
ontime2	4671.6590207517
ontime3	4671.65899086
ontime6	4674.7999910116
l2events	9670



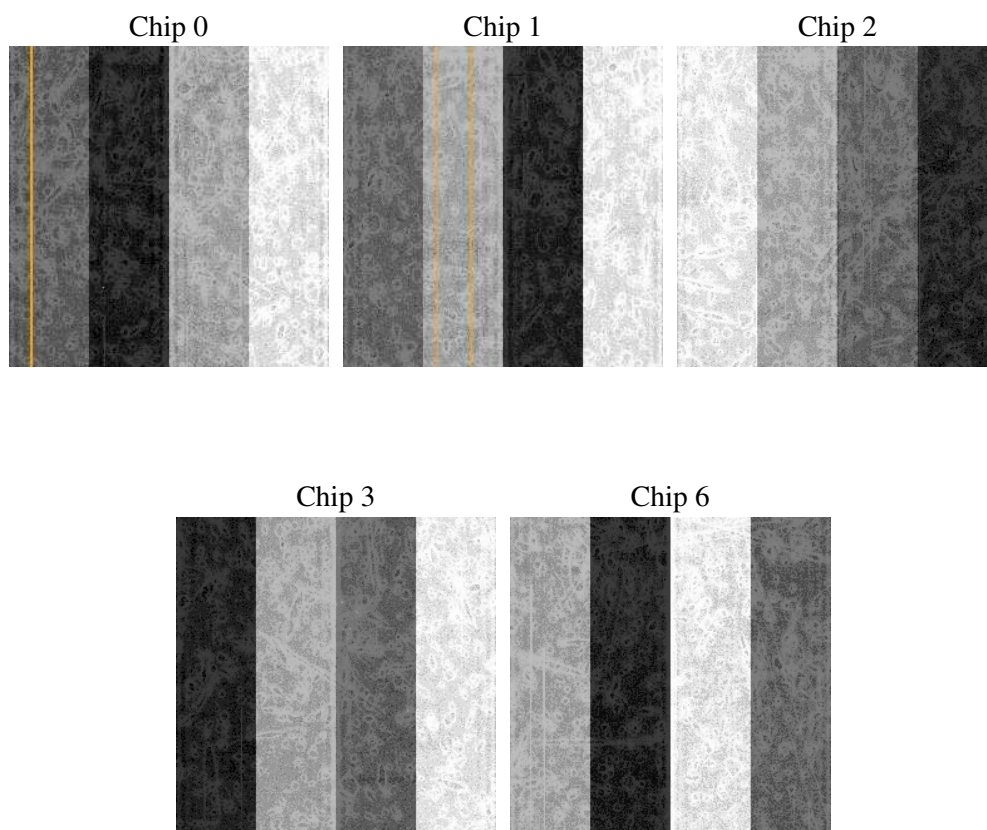
2 OBI

2.1 OBI

2.1.1 Images



2.1.2 Bias



2.1.3 Parameters

obi_num	1
ascdsver	7.6.8
caldsver	3.2.2
date	2006-07-30T05:54:54
revision	2

sched_exp_time	4900.000000
ontime	4676.9576273263
ontime0	4680.0986274779
ontime1	4680.0986274779
ontime2	4676.957657218
ontime3	4676.9576273263
ontime6	4680.0986274779
l1events	112881

2.1.4 Events

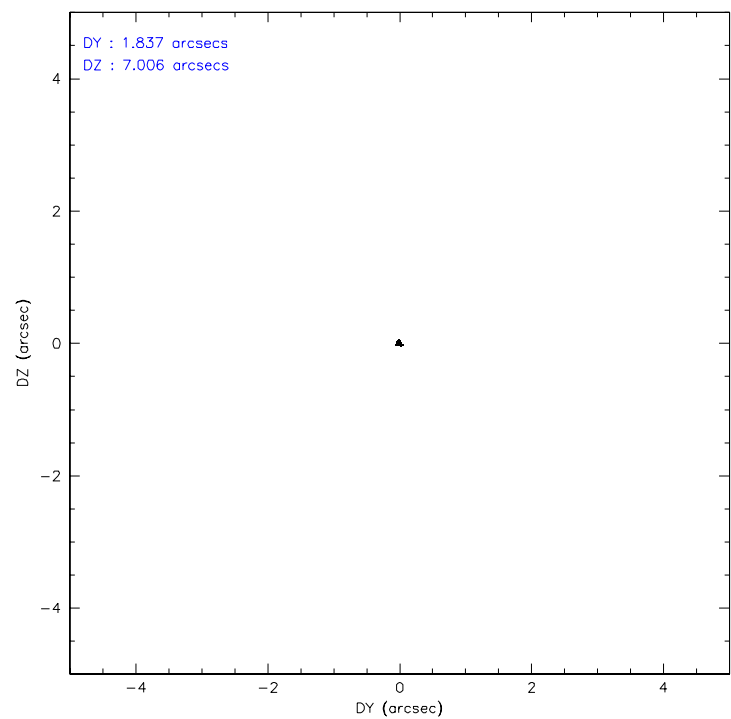
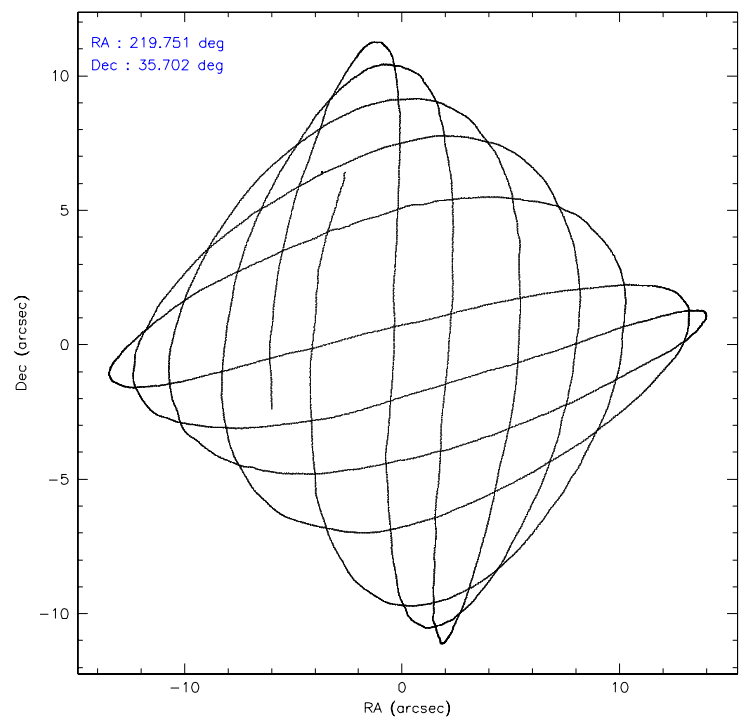
	ccd 0	ccd 1	ccd 2	ccd 3	ccd 6
level 1 events	20895	21440	23864	22884	23798
rejected events	18584	19052	21276	20769	21469
rejected %	88%	88%	89%	90%	90%

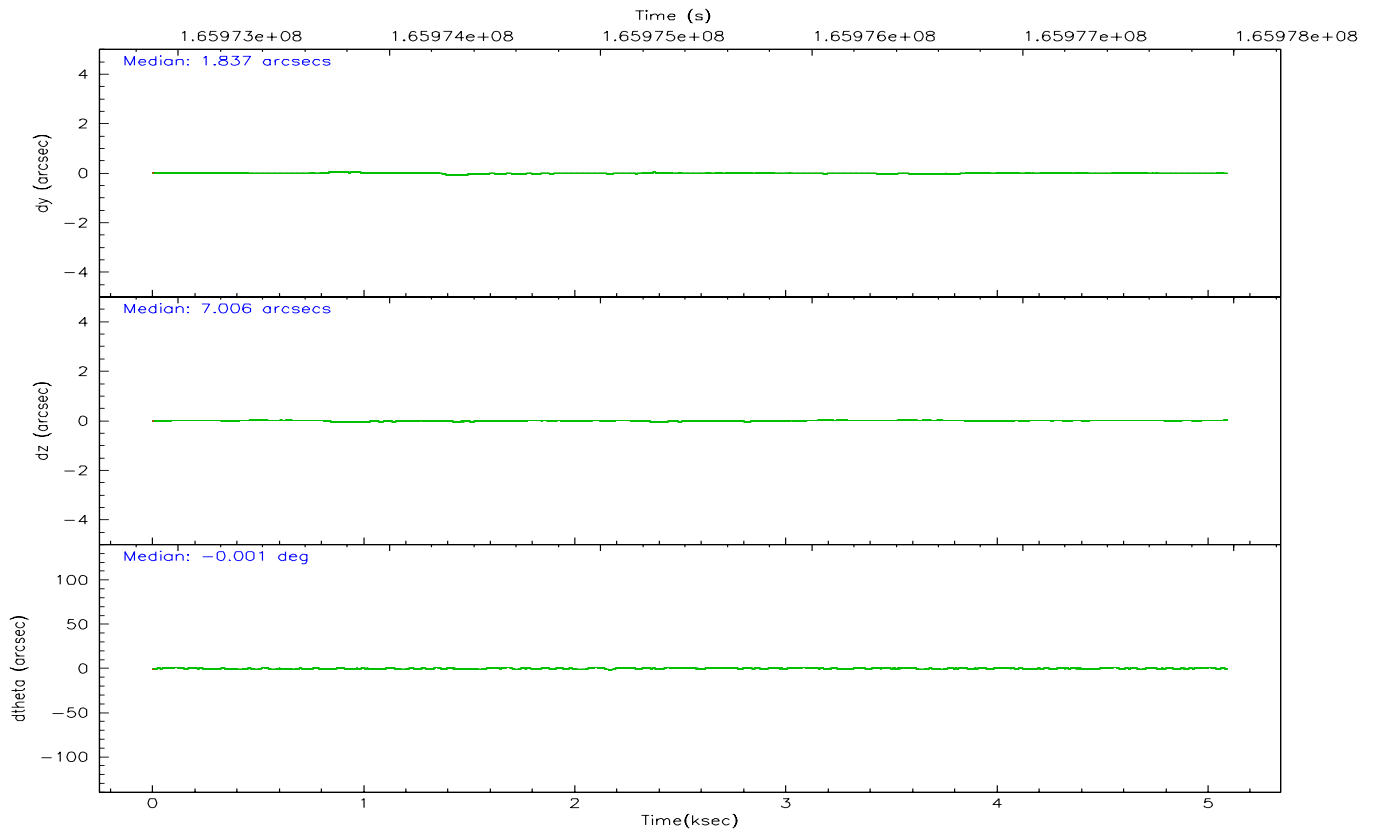
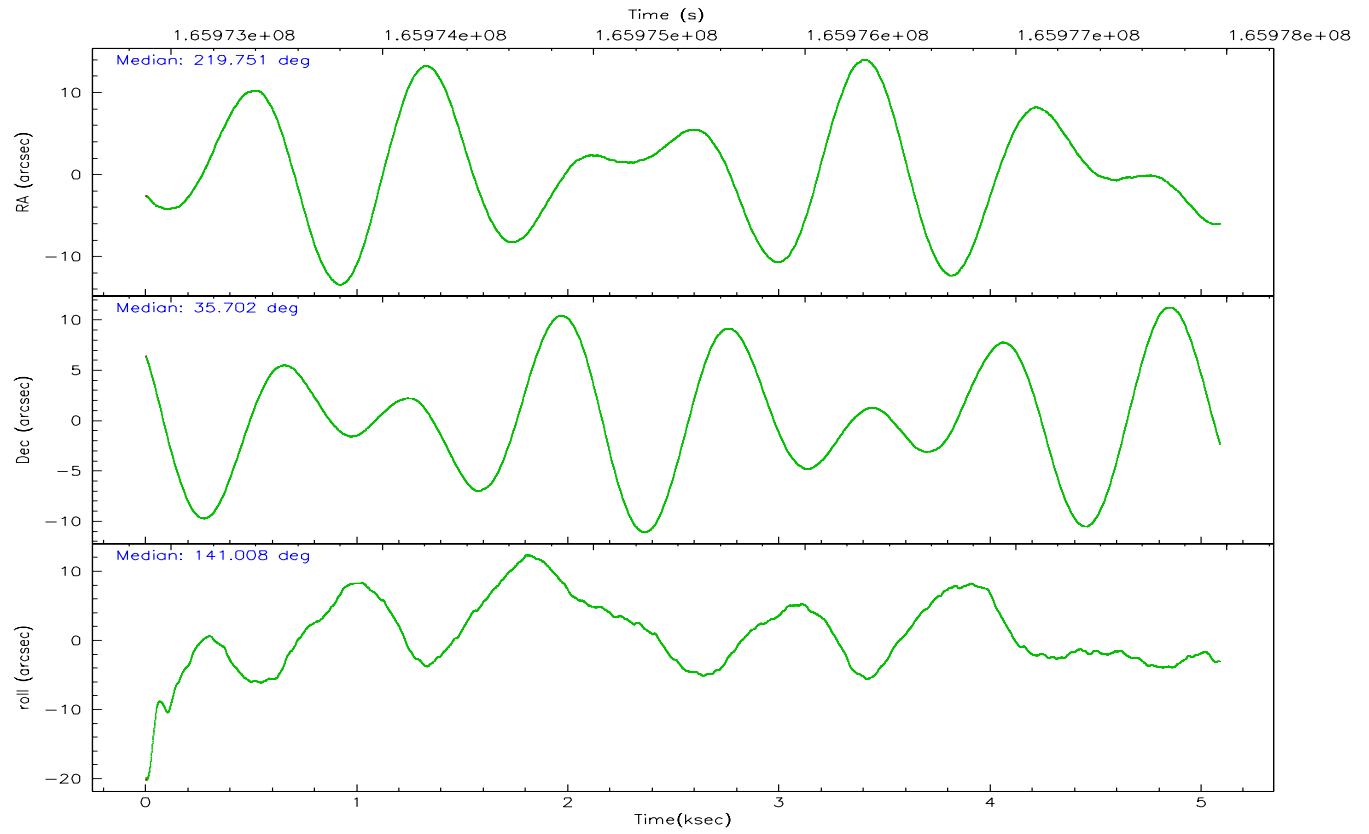
	ccd 0	ccd 1	ccd 2	ccd 3	ccd 6
grade 0 events	845	855	1176	826	769
	4%	3%	4%	3%	3%
grade 1 events	12	12	14	10	12
	0%	0%	0%	0%	0%
grade 2 events	493	500	521	407	536
	2%	2%	2%	1%	2%
grade 3 events	282	291	272	246	291
	1%	1%	1%	1%	1%
grade 4 events	251	278	249	233	252
	1%	1%	1%	1%	1%
grade 5 events	642	756	625	718	755
	3%	3%	2%	3%	3%
grade 6 events	440	465	371	405	481
	2%	2%	1%	1%	2%
grade 7 events	17930	18283	20636	20039	20702
	85%	85%	86%	87%	86%

2.2 Compared Parameters

Parameter	Planned	Actual	Parameter	Planned	Actual
Instrument	ACIS	ACIS	Obspar format version number	6	6
Detector	ACIS-01236	ACIS-01236	Obspar file type	PREDICTED	ACTUAL
Grating	NONE	NONE	Obspar update status	NONE	UPDATED
Data mode	VFAINT	VFAINT	On-chip summing requested	N	N
Observation mode	POINTING	POINTING	Subarray requested	NONE	NONE
Pointing RA	219.784321	219.750957384232	Alternating exposures requested	N	N
Pointing Dec	35.697479	35.70162215422968	Primary exposure time	0.000000	3.1
Pointing Roll	140.782122	141.0102610711373			
SIM focus pos (mm)	-0.782348	-0.7809083437167272			
SIM defocus (mm)	0	0.001439871863259334			
SIM translation stage pos (mm)	-233.592463	-233.5874344608287			
SIM translation stage offset (mm)	0	-0.005018542100998502			
Observation start time	165973072.184000	165972695.5245			
Observation start date	2003-04-05T23:36:48	2003-04-05T23:31:35			
Observation end time	165977972.184000	165978162.36223			
Observation end date	2003-04-06T00:58:28	2003-04-06T01:02:42			
Read mode	TIMED	TIMED			

2.3 Aspect



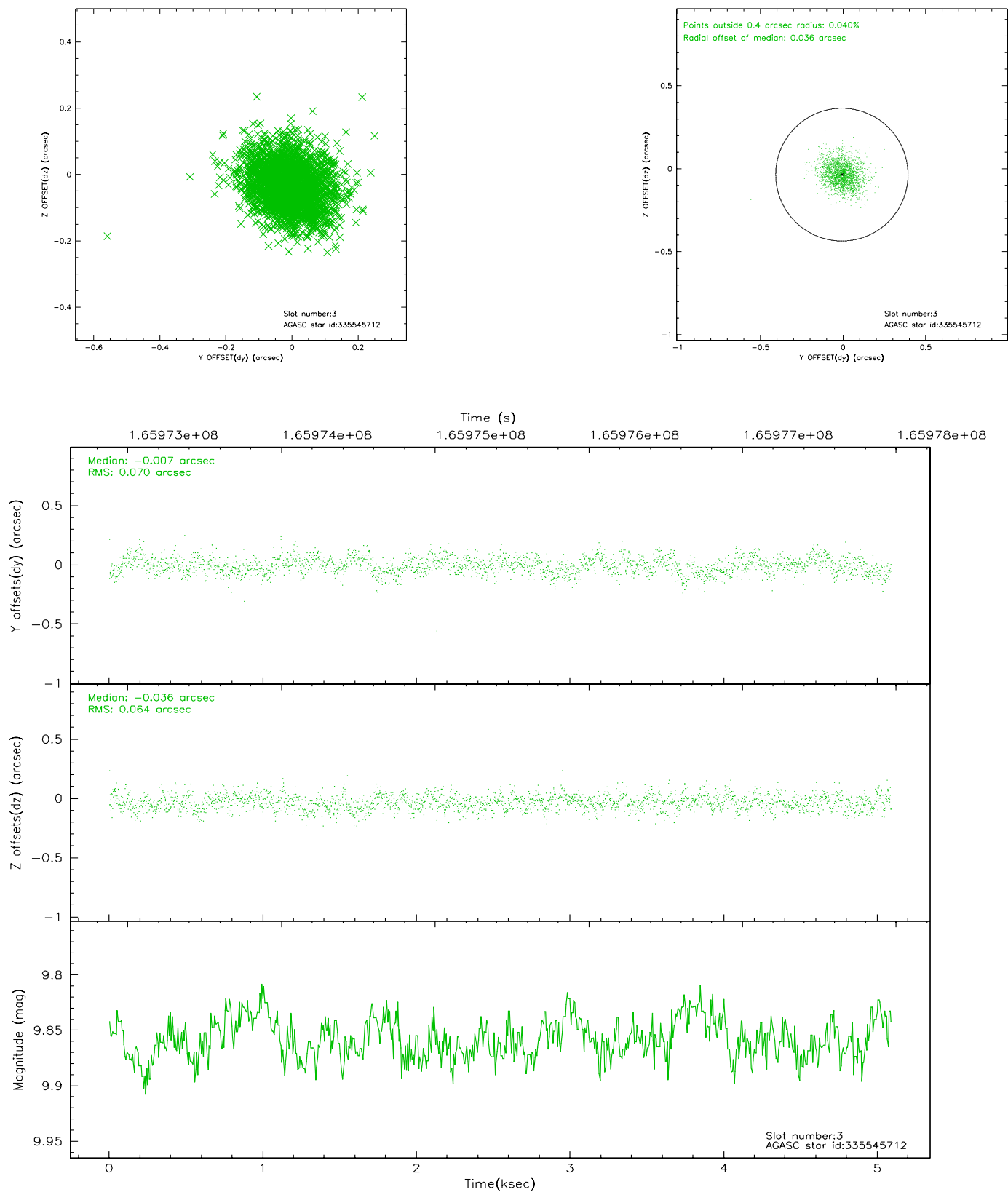


Slot Statistics

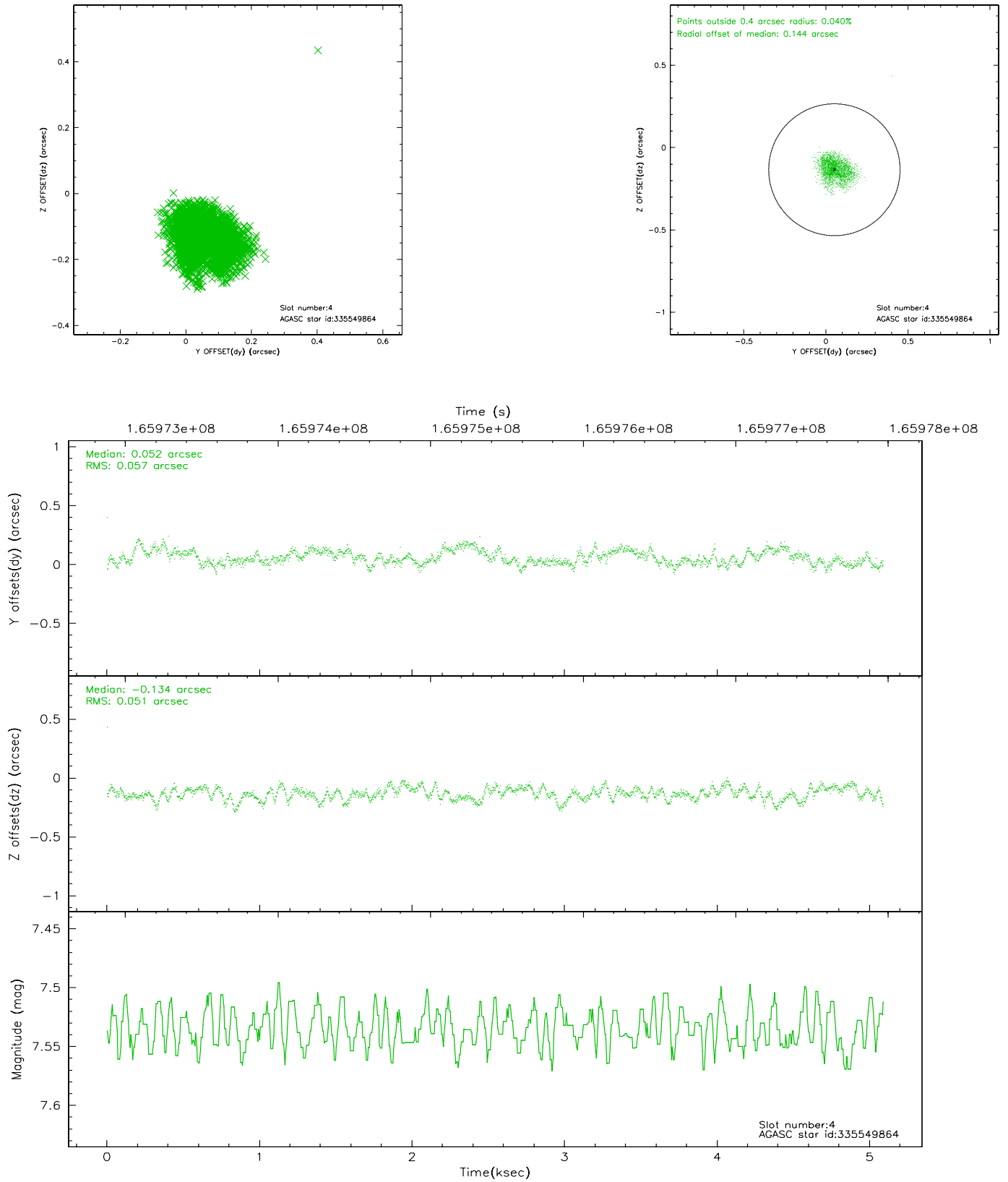
slot	status	id	mag	n_pts	med_dy	med_dz	dr1	dr2	ra	dec	mean_y	mean_z
0	FID	ACIS-I-1	7.25	1242	-0.012	0.038	0.006	0.010	0.000000	0.000000	937.96	-830.38
1	FID	ACIS-I-5	7.24	1242	-0.045	0.045	0.005	0.010	0.000000	0.000000	-1809.47	1066.59
2	FID	ACIS-I-6	7.26	1242	-0.034	-0.013	0.006	0.011	0.000000	0.000000	402.25	1712.33
3	GUIDE	335545712	9.86	2480	-0.007	-0.036	0.099	0.164	220.165930	35.199137	-2002.39	678.42
4	GUIDE	335549864	7.54	2483	0.052	-0.134	0.082	0.127	219.286726	35.929745	1654.36	266.73
5	GUIDE	335550024	9.56	2482	0.011	0.052	0.152	0.232	220.212917	36.084240	-82.91	-1869.01
6	GUIDE	335551264	9.25	2481	-0.110	0.120	0.099	0.153	219.547096	36.423006	2184.75	-1590.26
7	GUIDE	335552808	9.66	2480	0.038	-0.002	0.097	0.155	220.586307	35.562846	-2118.56	-1117.40

2.4 Star Slots

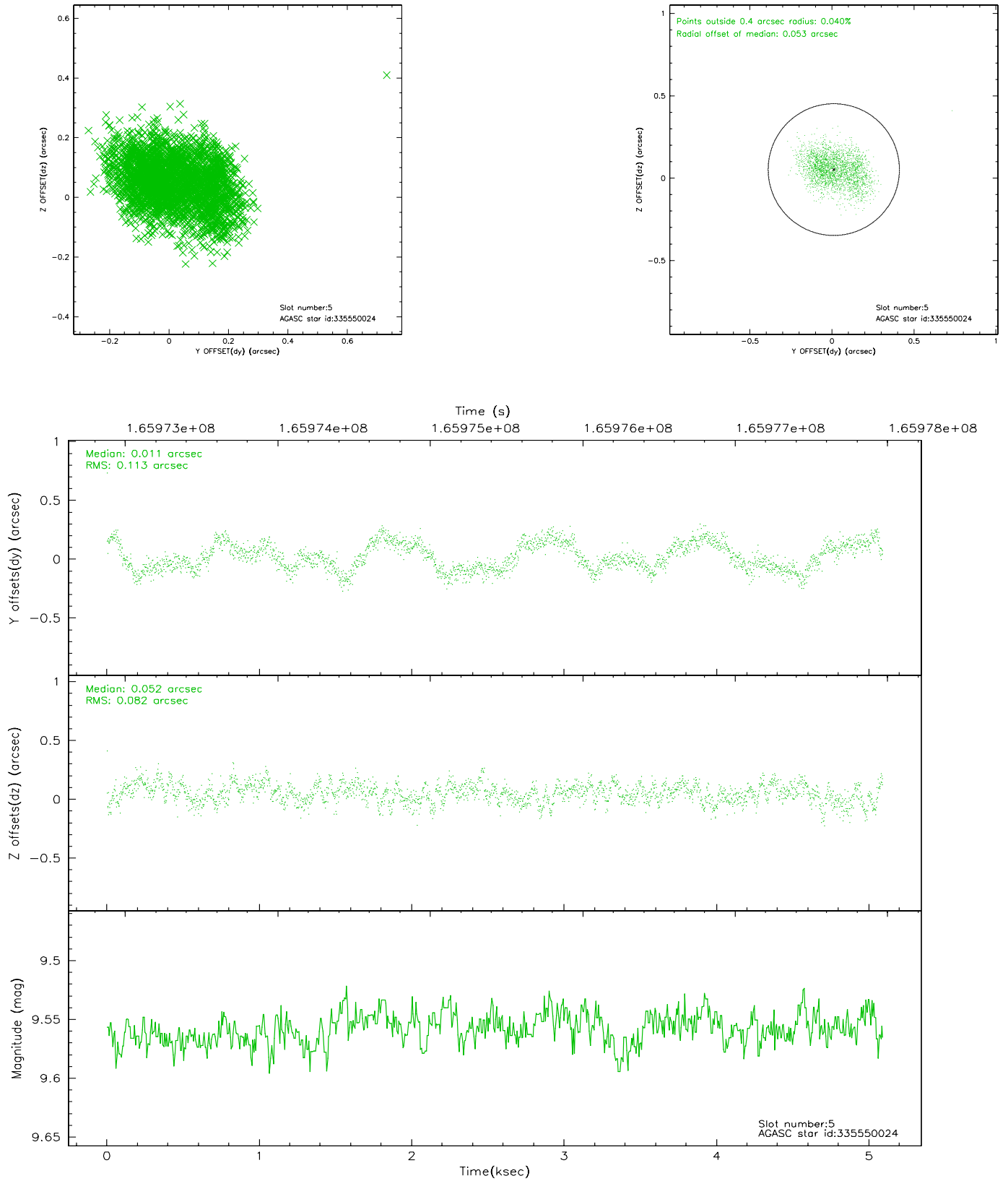
2.4.1 Slot 3



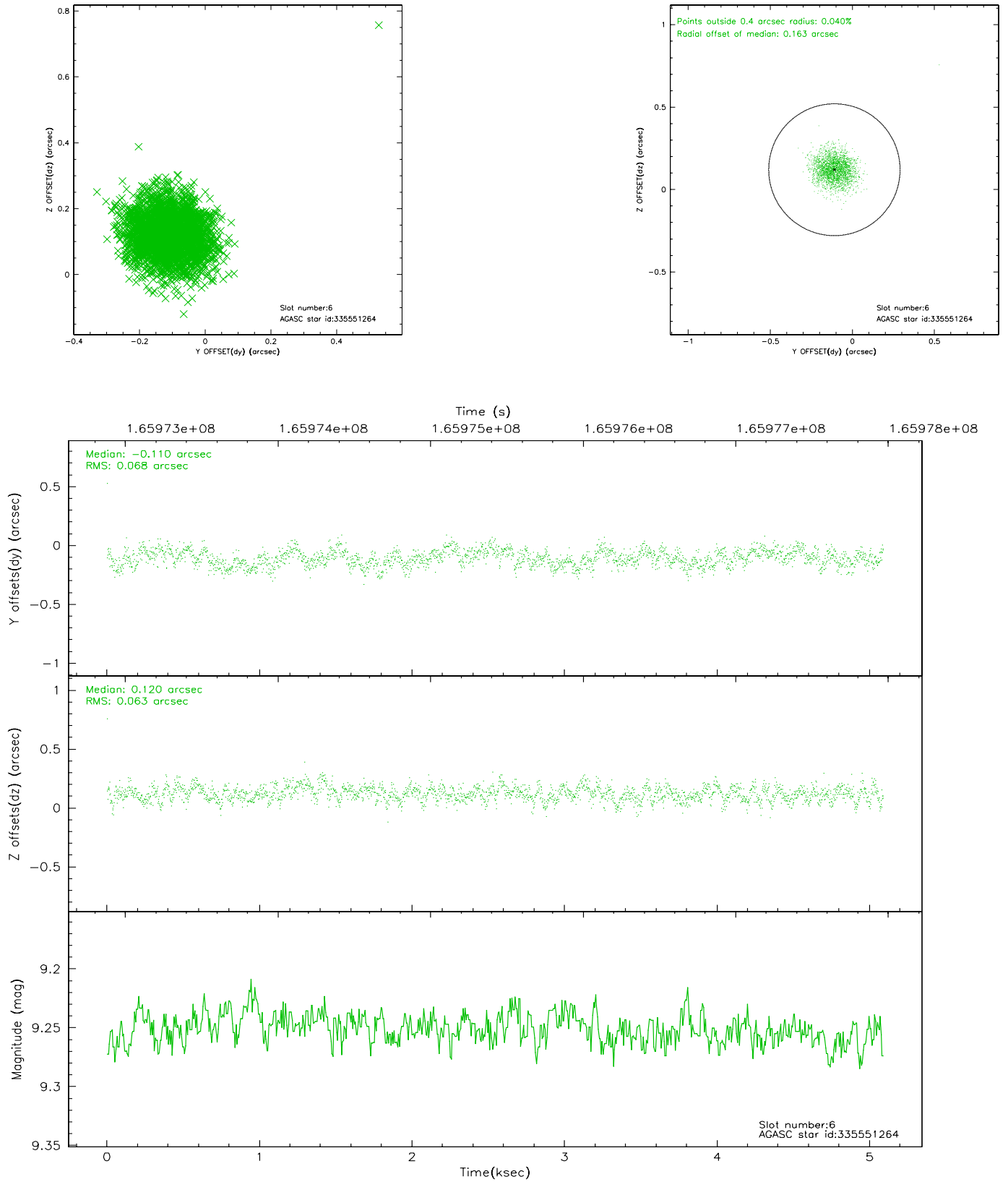
2.4.2 Slot 4



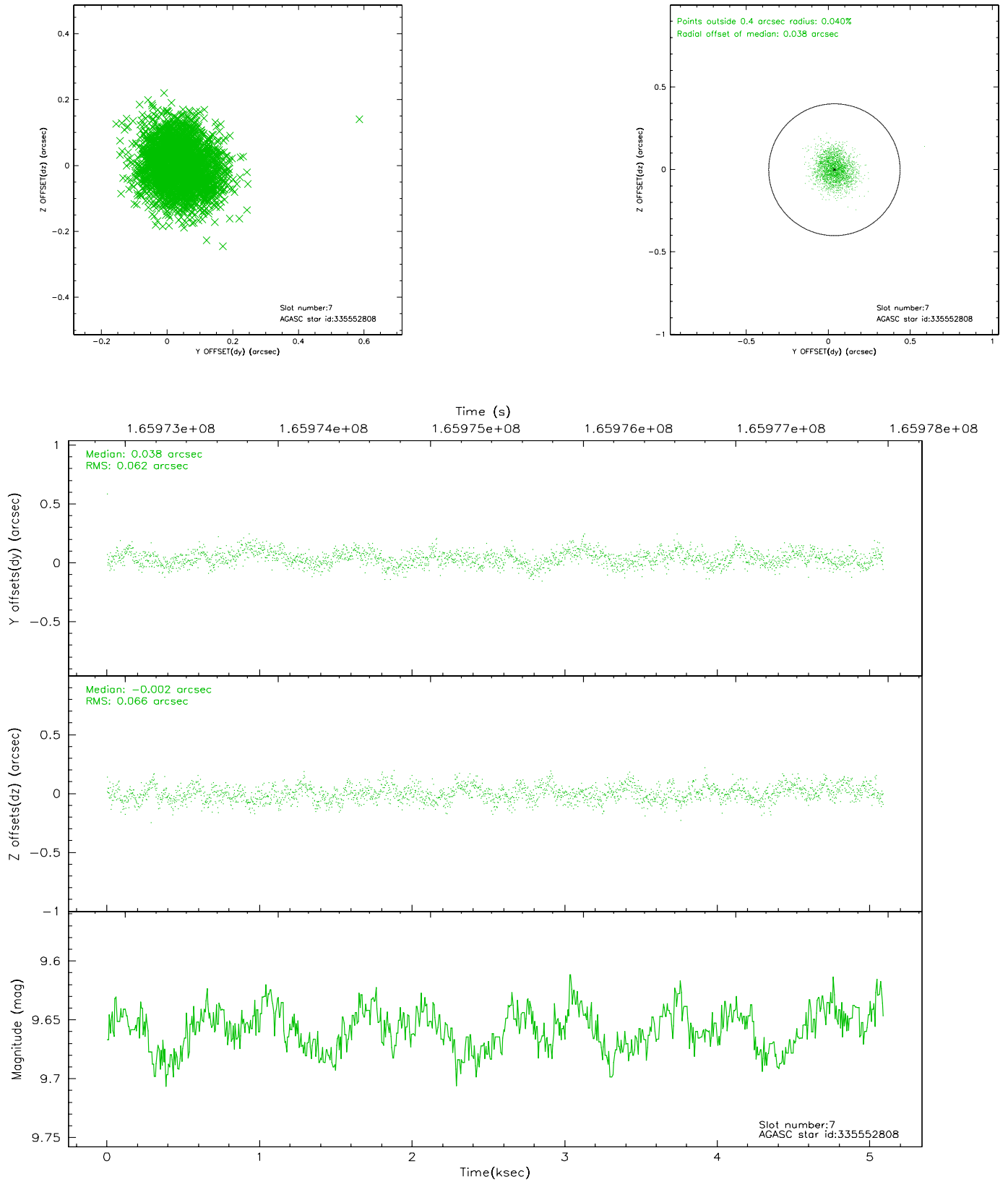
2.4.3 Slot 5



2.4.4 Slot 6

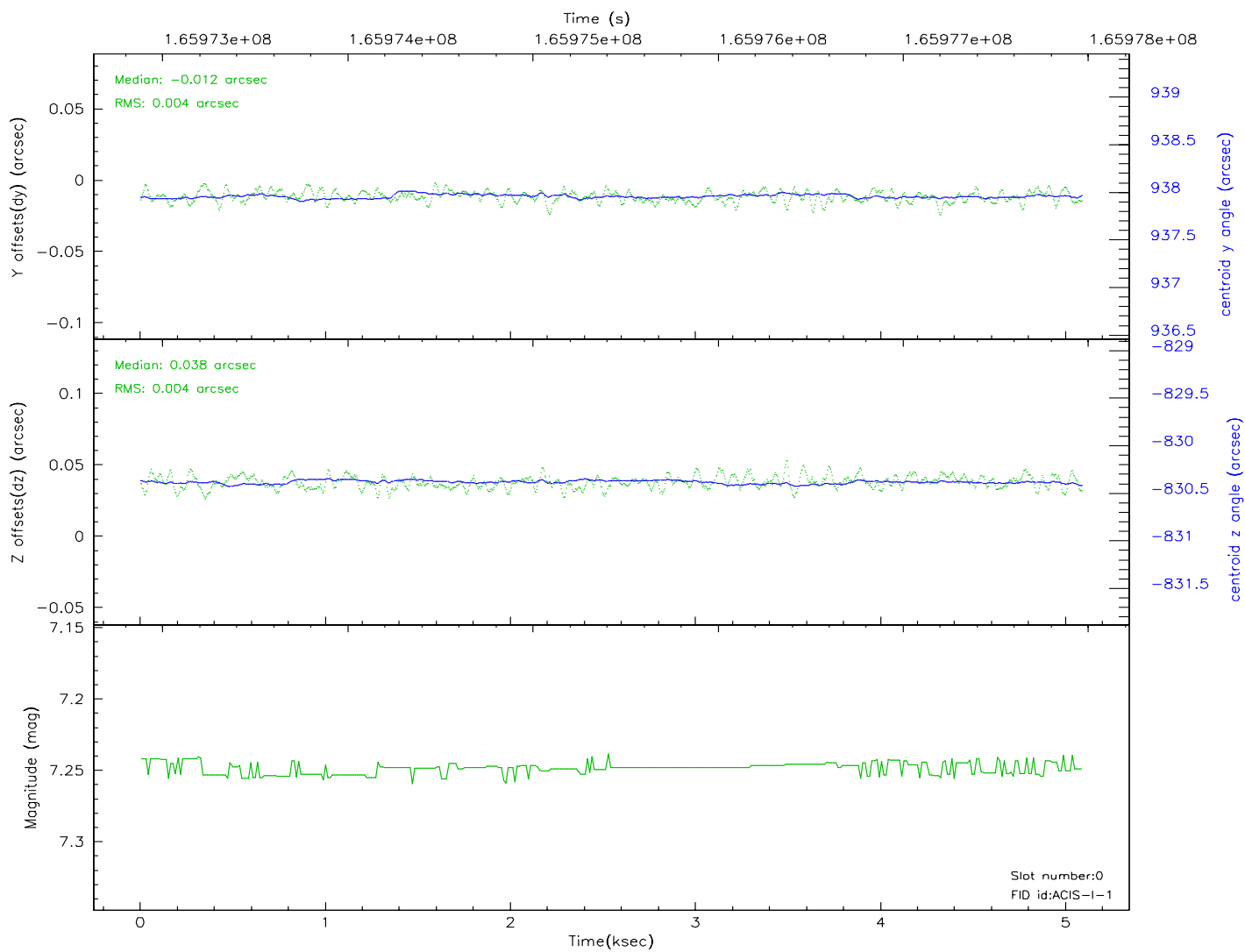
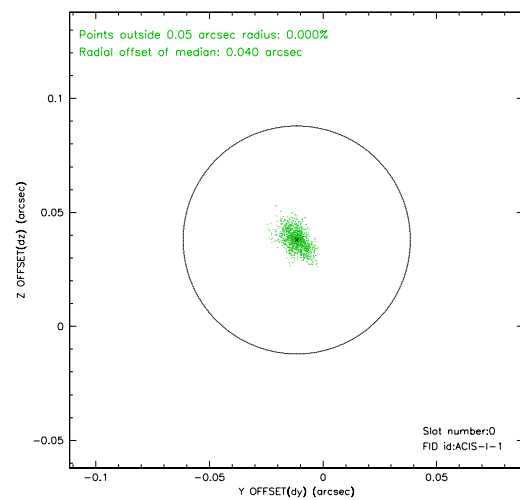
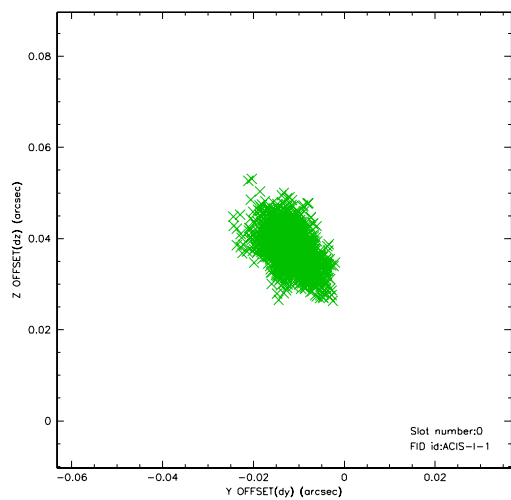


2.4.5 Slot 7

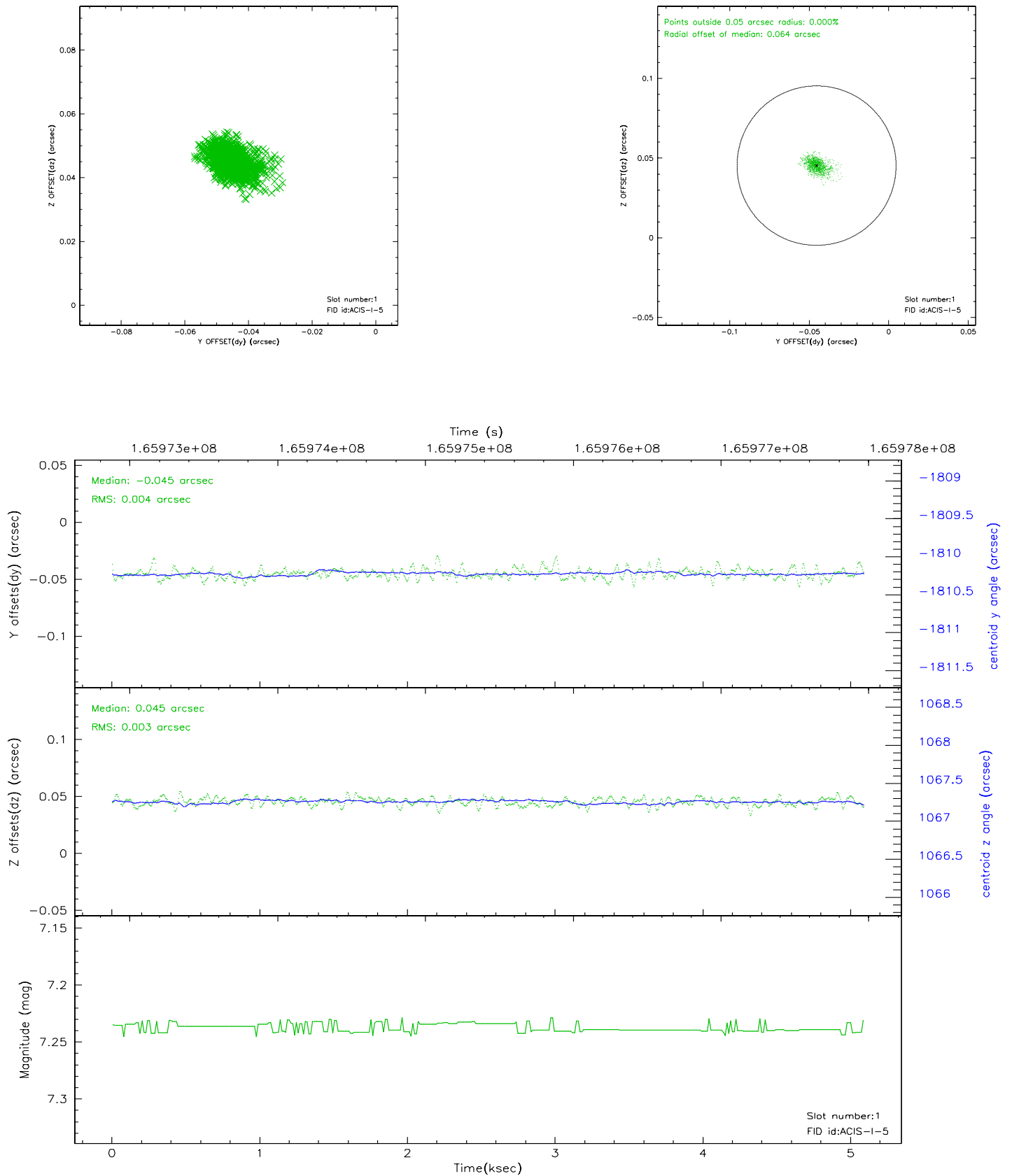


2.5 FID Slots

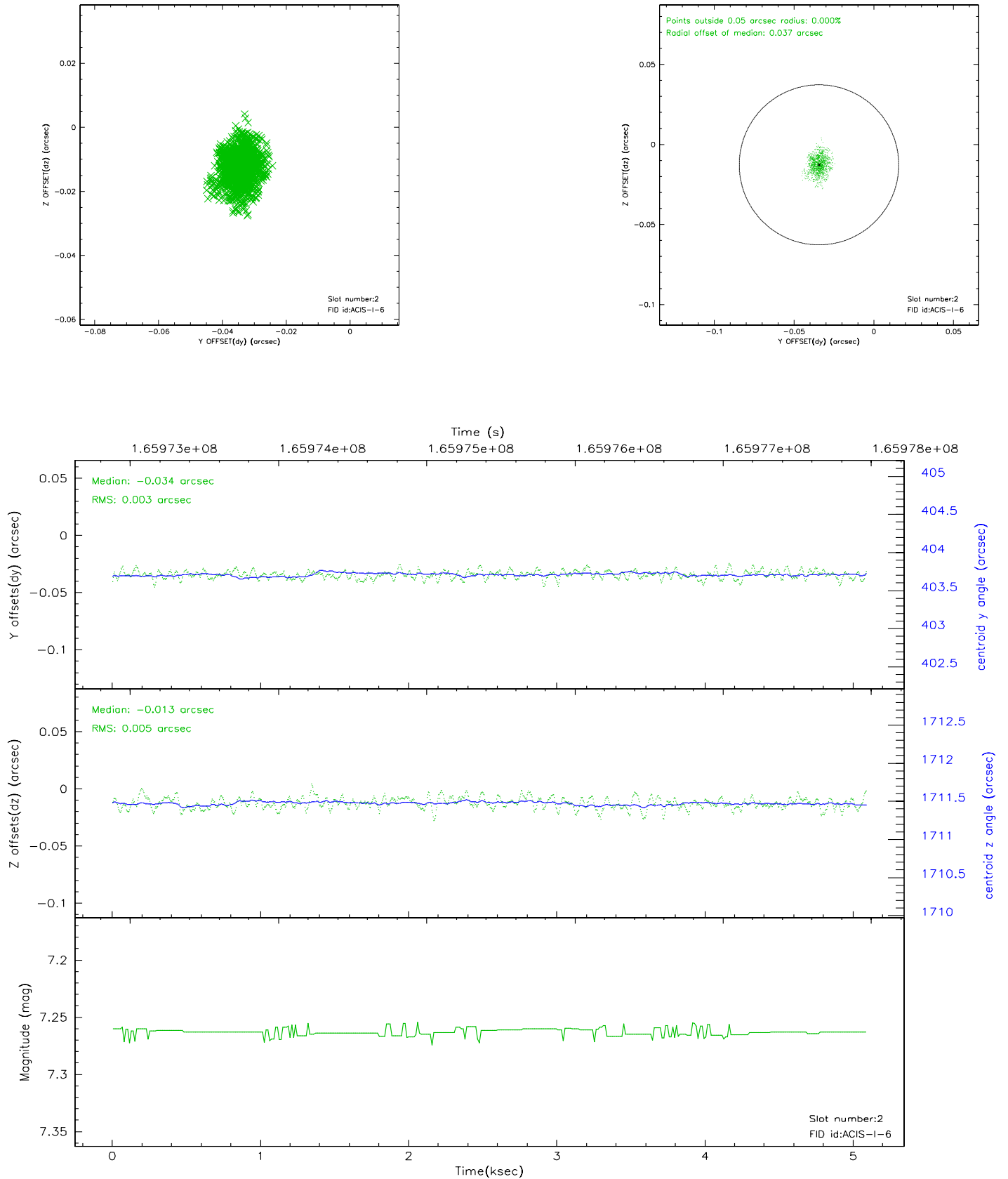
2.5.1 Slot 0



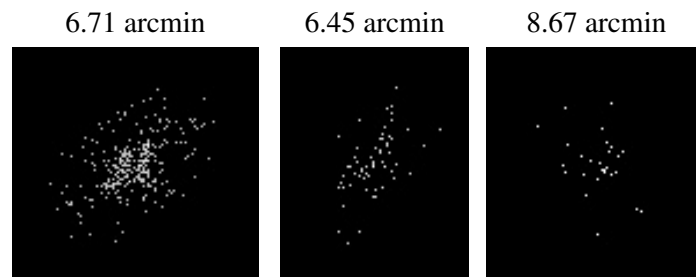
2.5.2 Slot 1



2.5.3 Slot 2



3 Point Sources



A Summary

A.1 Status

V&V Scientist	Jen Lauer
V&V Date (YYYY-MM-DD)	2006.07.30
V&V Edition	1
V&V Disposition and Status	OK
V&V Charge Time	4.671

A.2 Comments