

V&V Reference Report

L2 ASCDS Version : 7.6.8

Observation 4214 - L2 Version 001
Chandra X-Ray Center

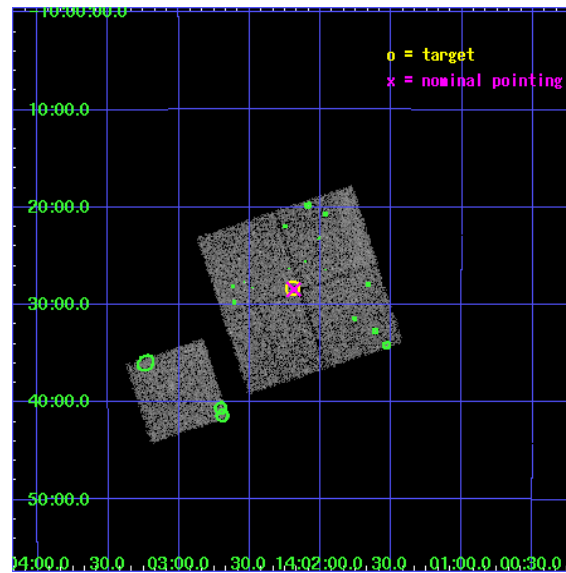
L2 Processing Date : Jul 7 2006

Contents

1	Front	2
2	OBI	3
2.1	OBI	3
2.1.1	Images	3
2.1.2	Bias	3
2.1.3	Parameters	4
2.1.4	Events	4
2.2	Compared Parameters	5
2.3	Aspect	6
2.4	Star Slots	9
2.4.1	Slot 3	9
2.4.2	Slot 4	10
2.4.3	Slot 5	11
2.4.4	Slot 6	12
2.4.5	Slot 7	13
2.5	FID Slots	14
2.5.1	Slot 0	14
2.5.2	Slot 1	15
2.5.3	Slot 2	16
3	Point Sources	17
A	Summary	18
A.1	Status	18
A.2	Comments	18

1 Front

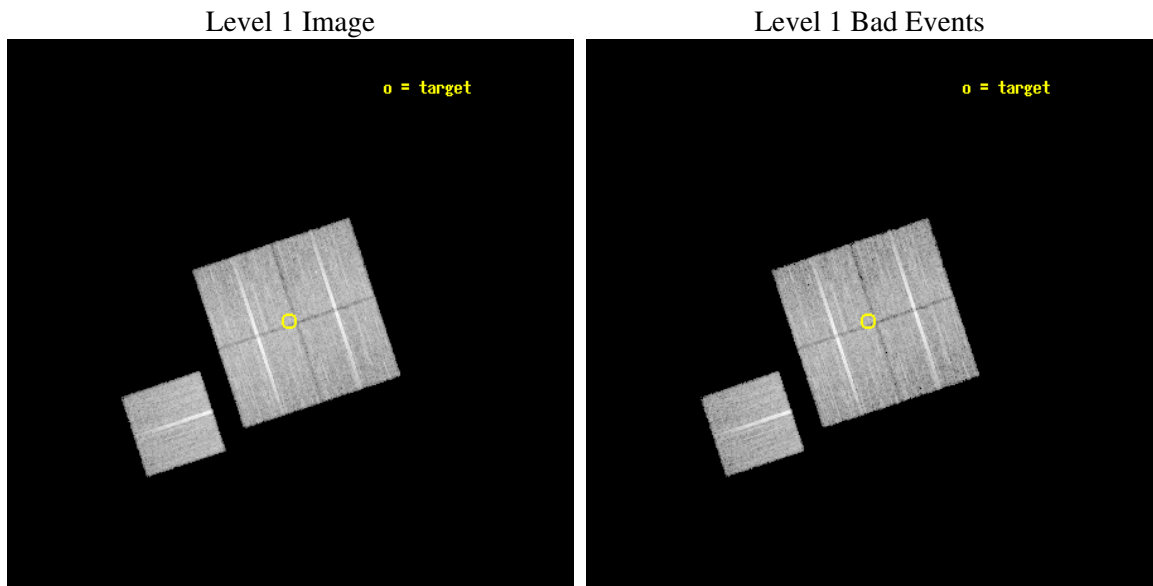
seq_num	800370
obs_id	4214
title	CHANDRA OBSERVATIONS OF DLS SHEAR-SELECTED CLUSTERS
observer	Prof. John Hughes
object	DLS J1402-1028
dtcycle	0
cycle	P
ra_targ	210.55
dec_targ	-10.470556
ra_nom	210.54689376548
dec_nom	-10.474010766188
roll_nom	251.68394630826
revision	2
ontime	18764.21802339
livetime	18519.049700898
ontime0	18757.936102957
ontime1	18761.077033222
ontime2	18767.358993649
ontime3	18764.21802339
ontime6	18770.499963909
l2events	42230



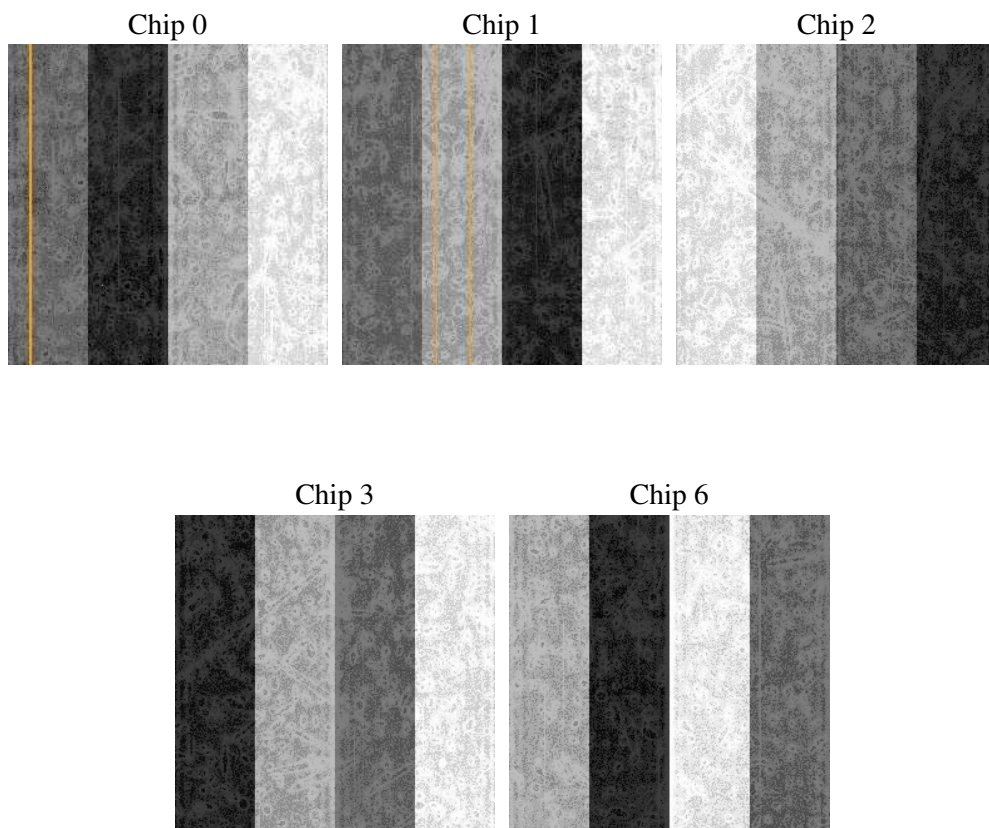
2 OBI

2.1 OBI

2.1.1 Images



2.1.2 Bias



2.1.3 Parameters

obi_num	0
ascdsver	7.6.8
caldbver	3.2.2
date	2006-07-08T01:39:21
revision	2

sched_exp_time	19000.000000
ontime	18770.620263547
ontime0	18764.338343114
ontime1	18767.479273379
ontime2	18773.761233807
ontime3	18770.620263547
ontime6	18776.902204067
l1events	490647

2.1.4 Events

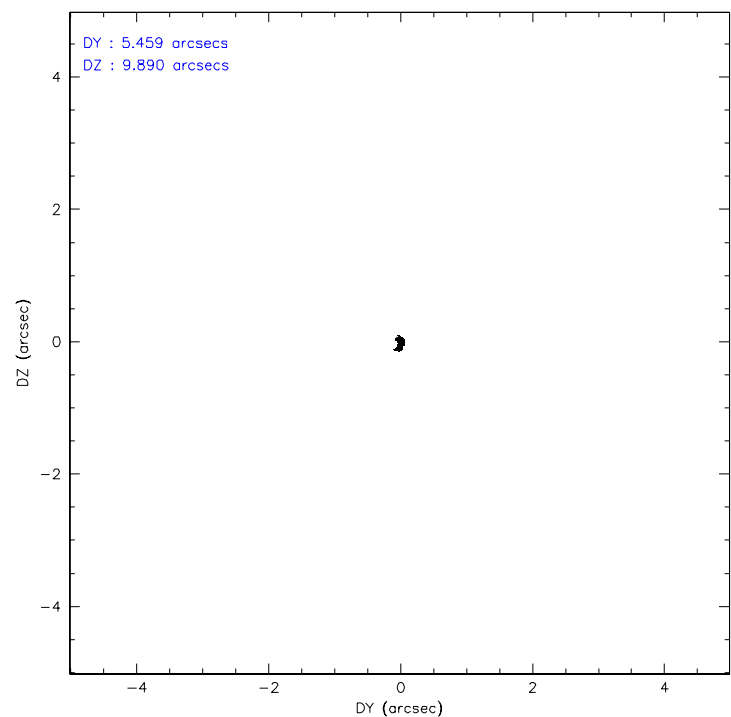
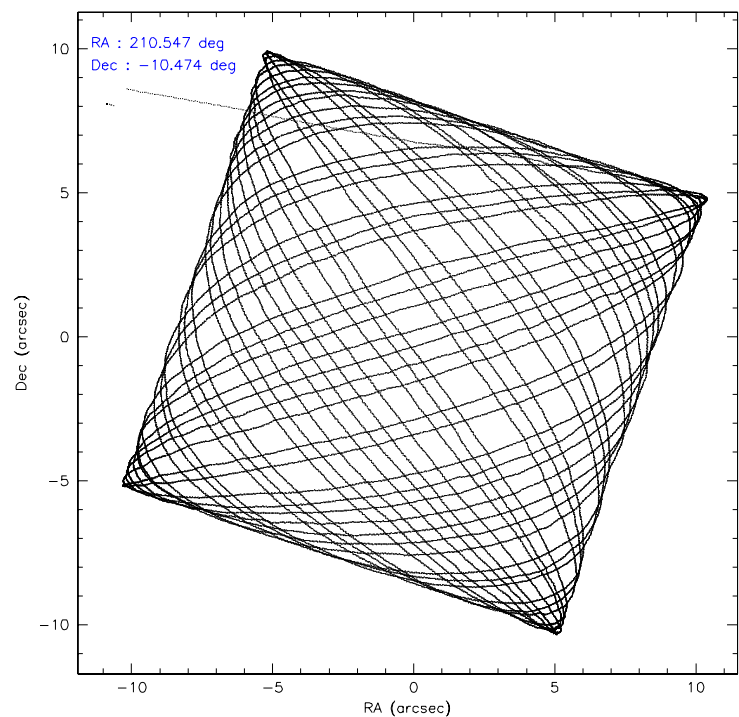
	ccd 0	ccd 1	ccd 2	ccd 3	ccd 6
level 1 events	93844	94738	103385	99040	99640
rejected events	83838	83278	93640	89491	89592
rejected %	89%	87%	90%	90%	89%

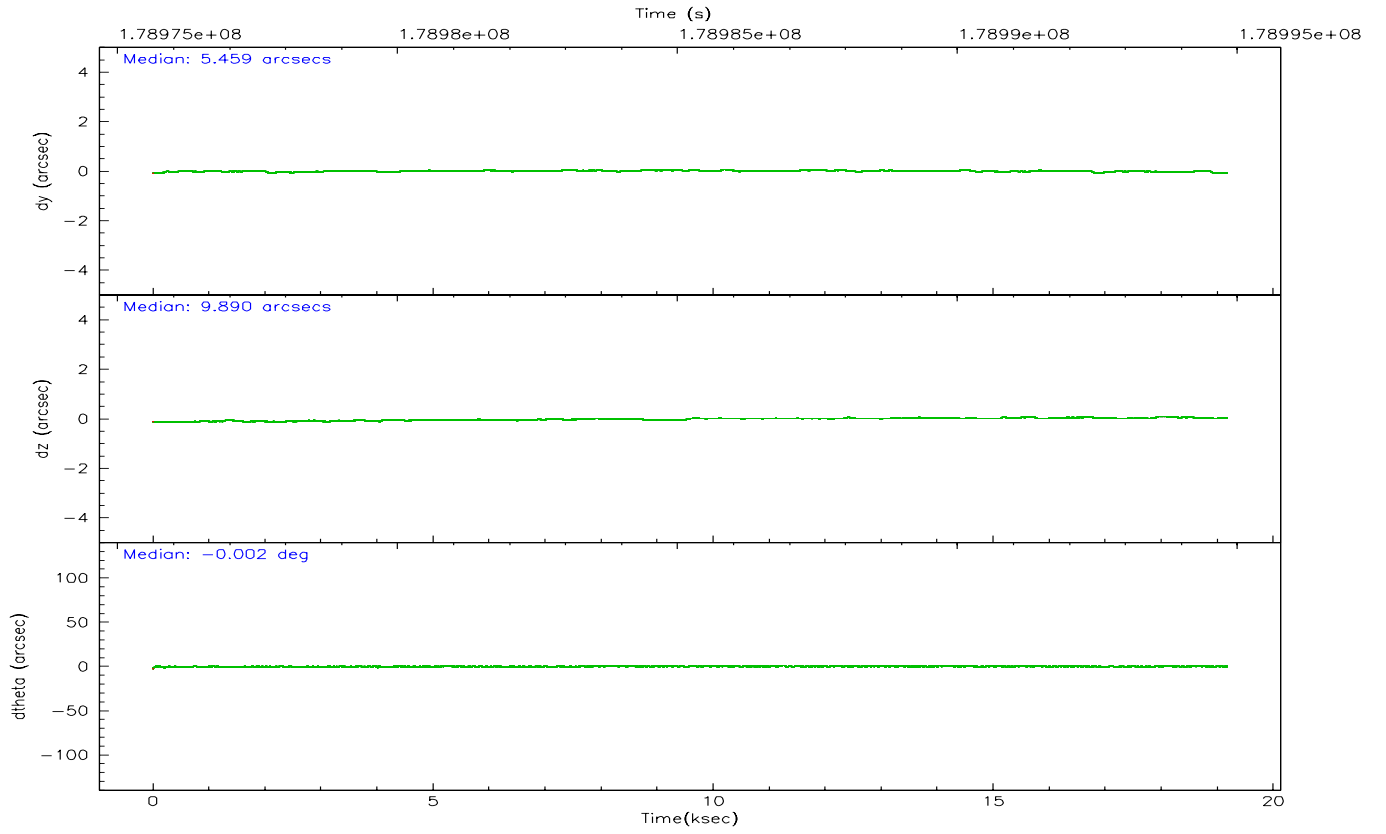
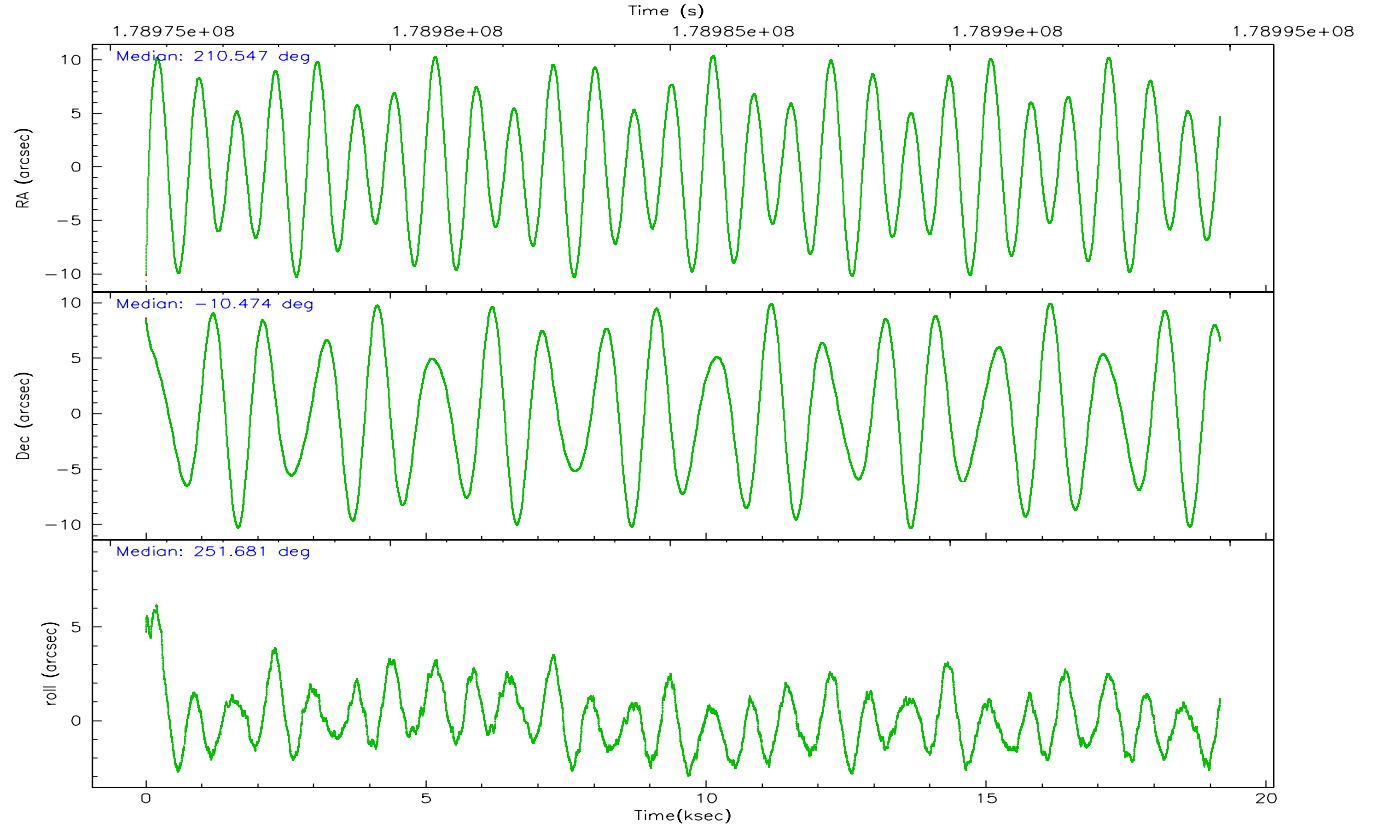
	ccd 0	ccd 1	ccd 2	ccd 3	ccd 6
grade 0 events	3544	4272	3500	3615	3524
	3%	4%	3%	3%	3%
grade 1 events	47	45	44	53	47
	0%	0%	0%	0%	0%
grade 2 events	2220	2368	2255	1927	2109
	2%	2%	2%	1%	2%
grade 3 events	1269	1203	1122	1103	1188
	1%	1%	1%	1%	1%
grade 4 events	1071	1305	1044	1121	1109
	1%	1%	1%	1%	1%
grade 5 events	3290	3640	3122	3705	3853
	3%	3%	3%	3%	3%
grade 6 events	1906	2313	1826	1788	2120
	2%	2%	1%	1%	2%
grade 7 events	80497	79592	90472	85728	85690
	85%	84%	87%	86%	85%

2.2 Compared Parameters

Parameter	Planned	Actual	Parameter	Planned	Actual
Instrument	ACIS	ACIS	Obspar format version number	6	6
Detector	ACIS-01236	ACIS-01236	Obspar file type	PREDICTED	ACTUAL
Grating	NONE	NONE	Obspar update status	NONE	UPDATED
Data mode	VFAINT	VFAINT	On-chip summing requested	N	N
Observation mode	POINTING	POINTING	Subarray requested	NONE	NONE
Pointing RA	210.541138	210.5468937654781	Alternating exposures requested	N	N
Pointing Dec	-10.447245	-10.47401076618772	Primary exposure time	0.000000	3.1
Pointing Roll	251.474212	251.6839463082622			
SIM focus pos (mm)	-0.782348	-0.7809083437167272			
SIM defocus (mm)	0	0.001439871863259334			
SIM translation stage pos (mm)	-233.592463	-233.5874344608287			
SIM translation stage offset (mm)	0	-0.005018542100998502			
Observation start time	178975812.184000	178974824.15212			
Observation start date	2003-09-03T11:29:08	2003-09-03T11:13:44			
Observation end time	178994812.184000	178995045.35298			
Observation end date	2003-09-03T16:45:48	2003-09-03T16:50:45			
Read mode	TIMED	TIMED			

2.3 Aspect



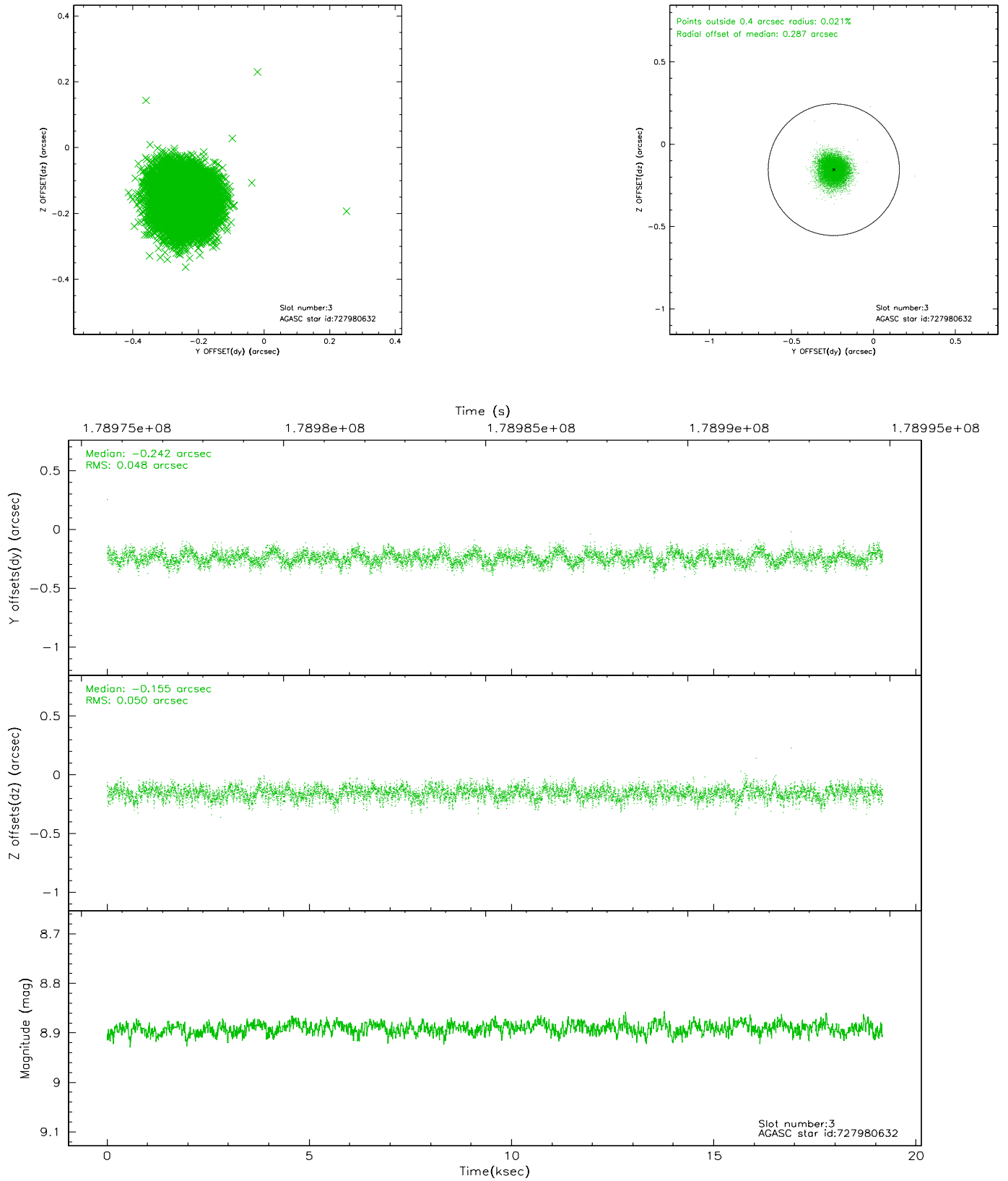


Slot Statistics

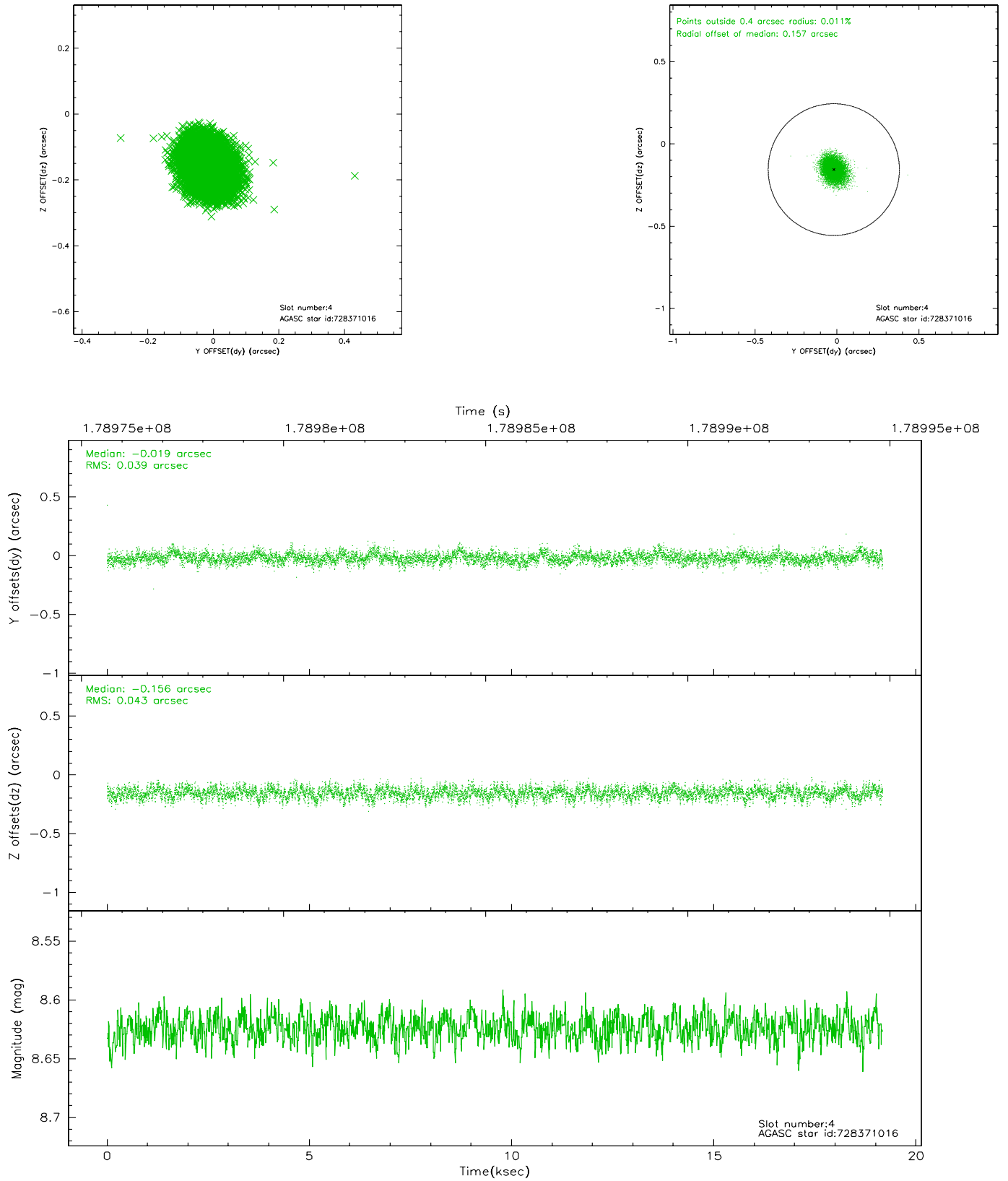
slot	status	id	mag	n_pts	med_dy	med_dz	dr1	dr2	ra	dec	mean_y	mean_z
0	FID	ACIS-I-1	7.24	4674	-0.006	0.039	0.006	0.011	0.000000	0.000000	934.26	-833.30
1	FID	ACIS-I-5	7.23	4674	-0.123	0.029	0.005	0.009	0.000000	0.000000	-1813.86	1064.07
2	FID	ACIS-I-6	7.25	4674	0.039	0.003	0.007	0.012	0.000000	0.000000	399.62	1708.78
3	GUIDE	727980632	8.89	9352	-0.242	-0.155	0.074	0.118	210.409636	-9.940109	-1582.79	-1022.39
4	GUIDE	728371016	8.62	9350	-0.019	-0.156	0.061	0.099	210.163866	-10.528337	701.98	-1173.45
5	GUIDE	728373488	8.96	9348	0.051	-0.041	0.062	0.102	210.737272	-10.465613	-157.39	679.25
6	GUIDE	728372120	7.93	9352	-0.009	0.175	0.066	0.108	210.863188	-10.967306	1414.26	1674.72
7	GUIDE	728377784	7.90	9350	0.215	0.178	0.049	0.078	210.974476	-11.272975	2334.05	2396.20

2.4 Star Slots

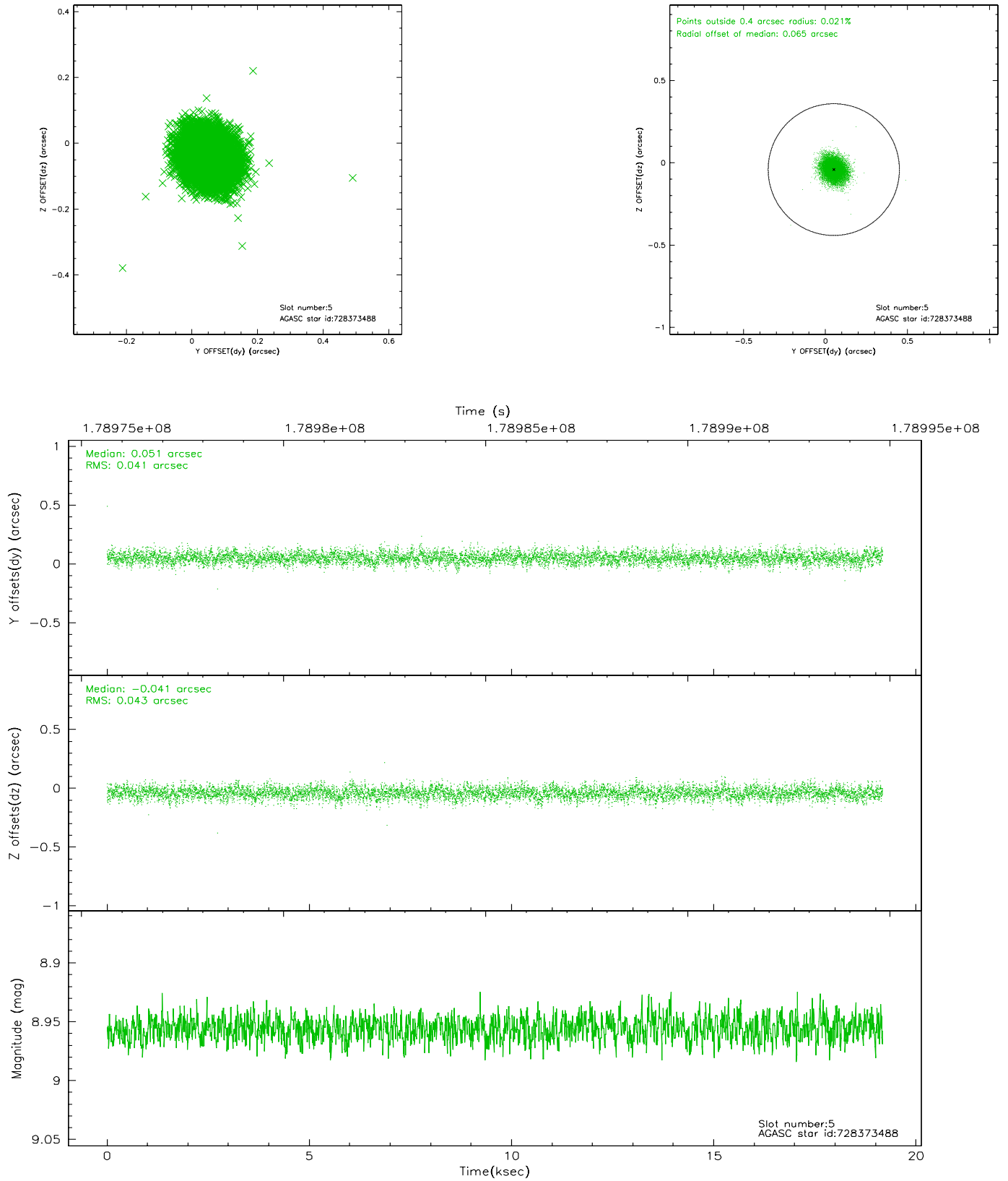
2.4.1 Slot 3



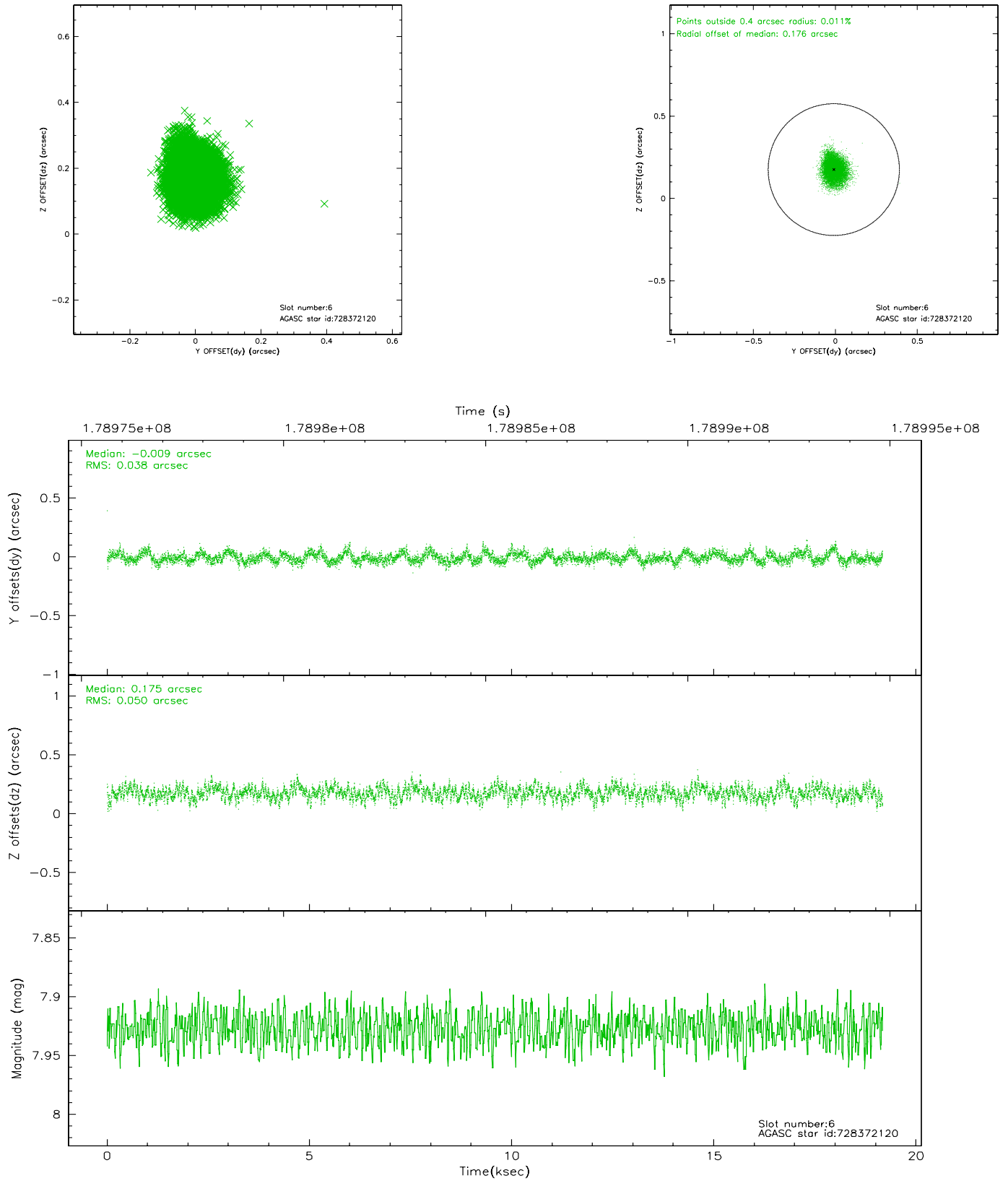
2.4.2 Slot 4



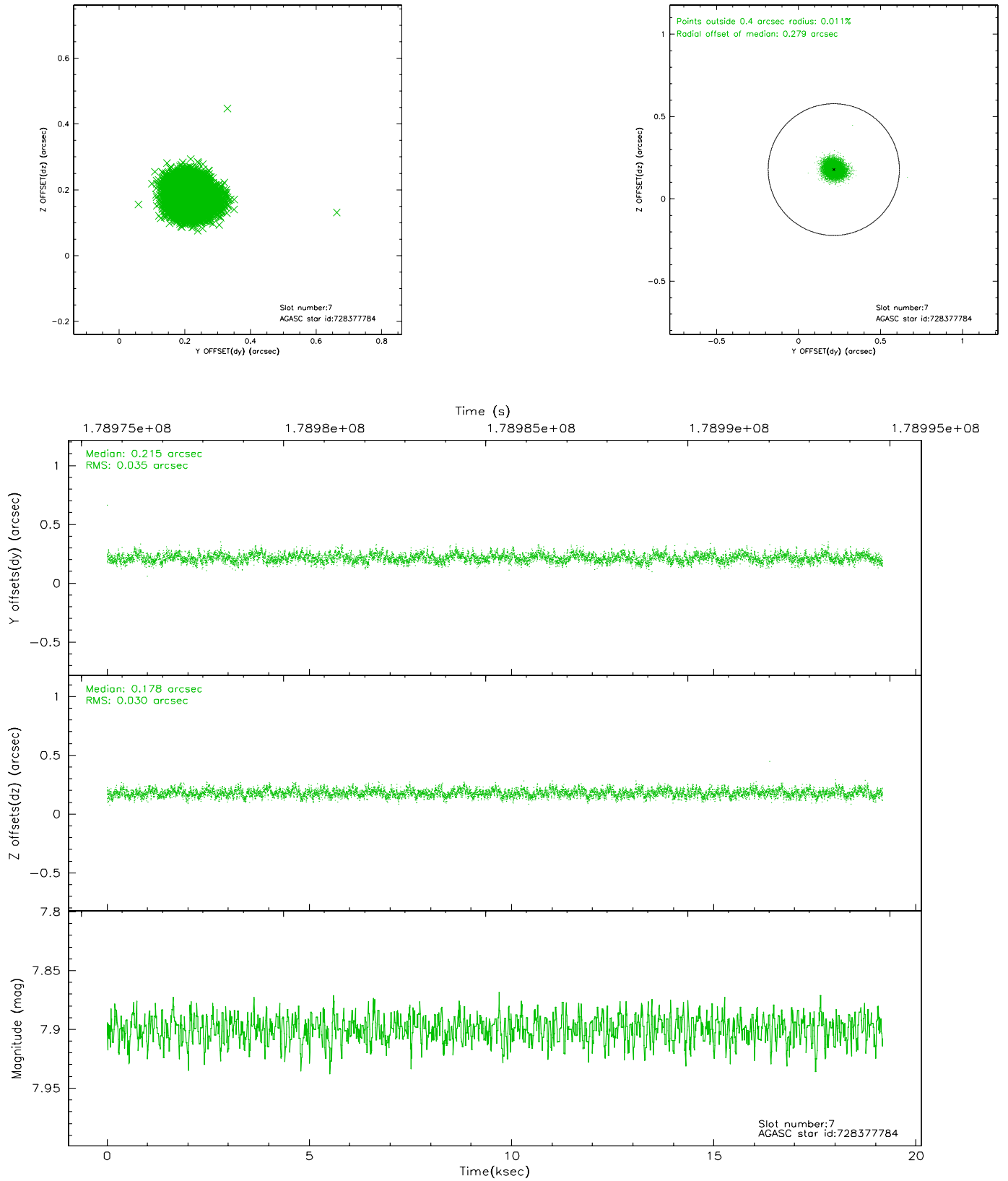
2.4.3 Slot 5



2.4.4 Slot 6

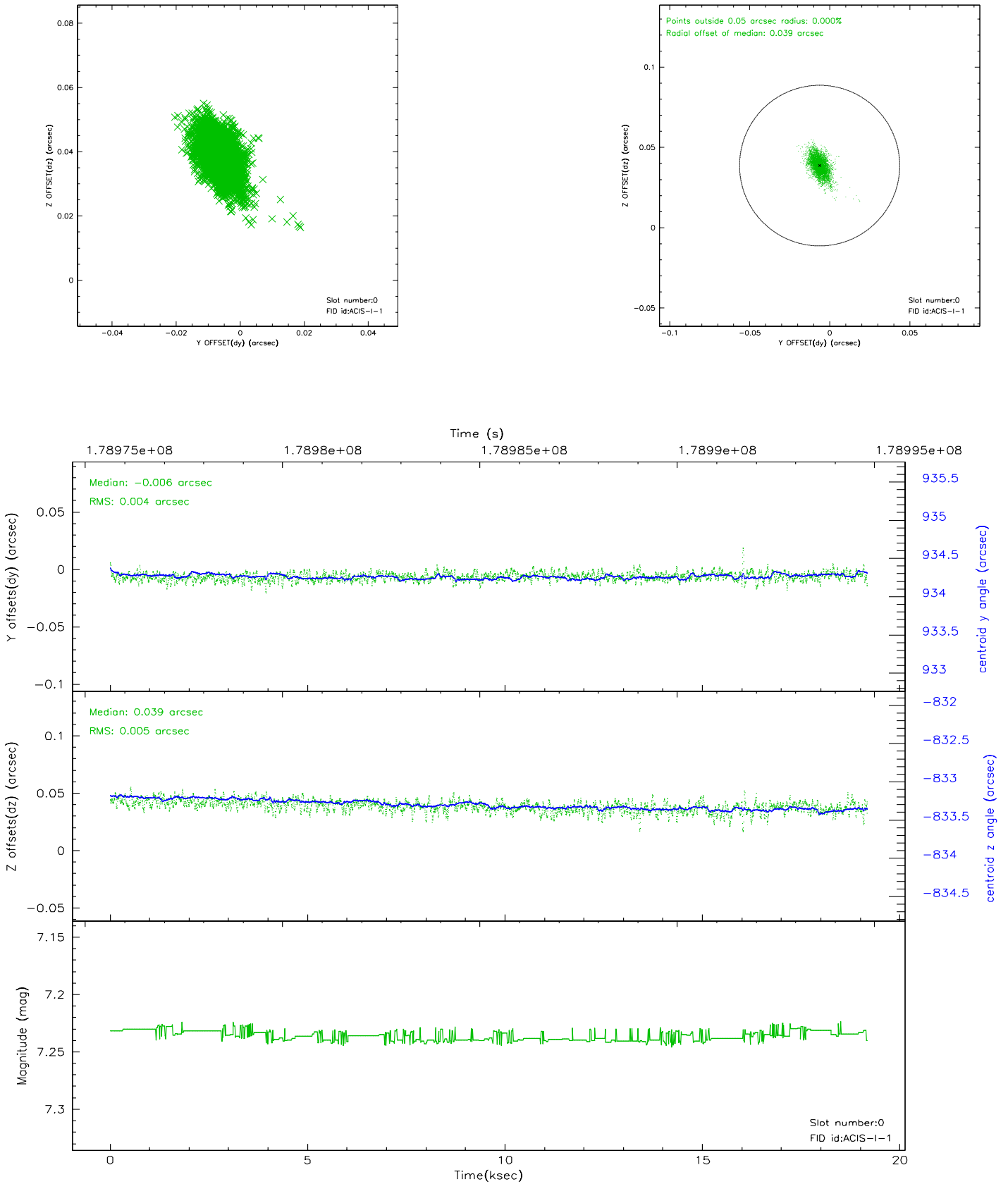


2.4.5 Slot 7

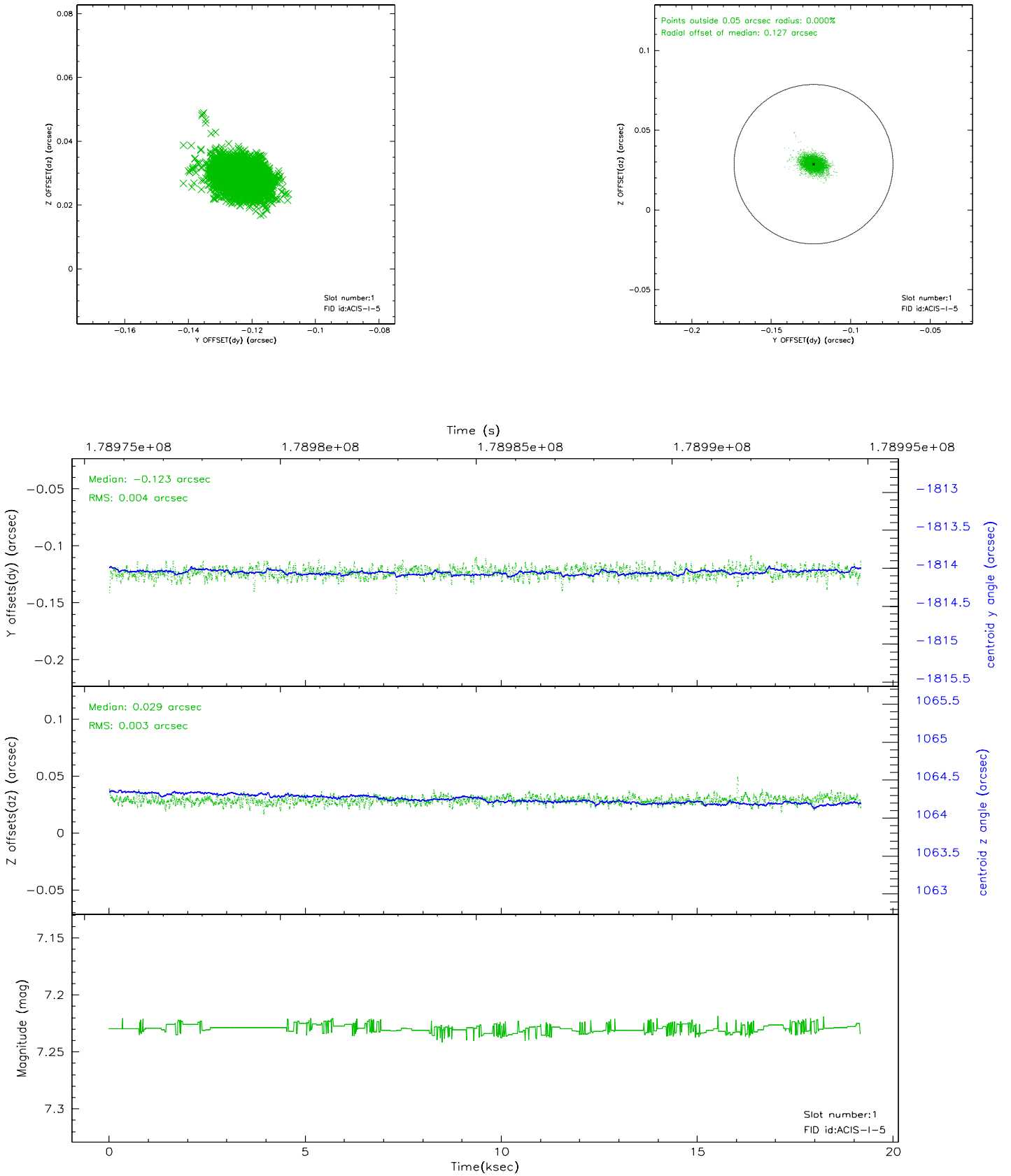


2.5 FID Slots

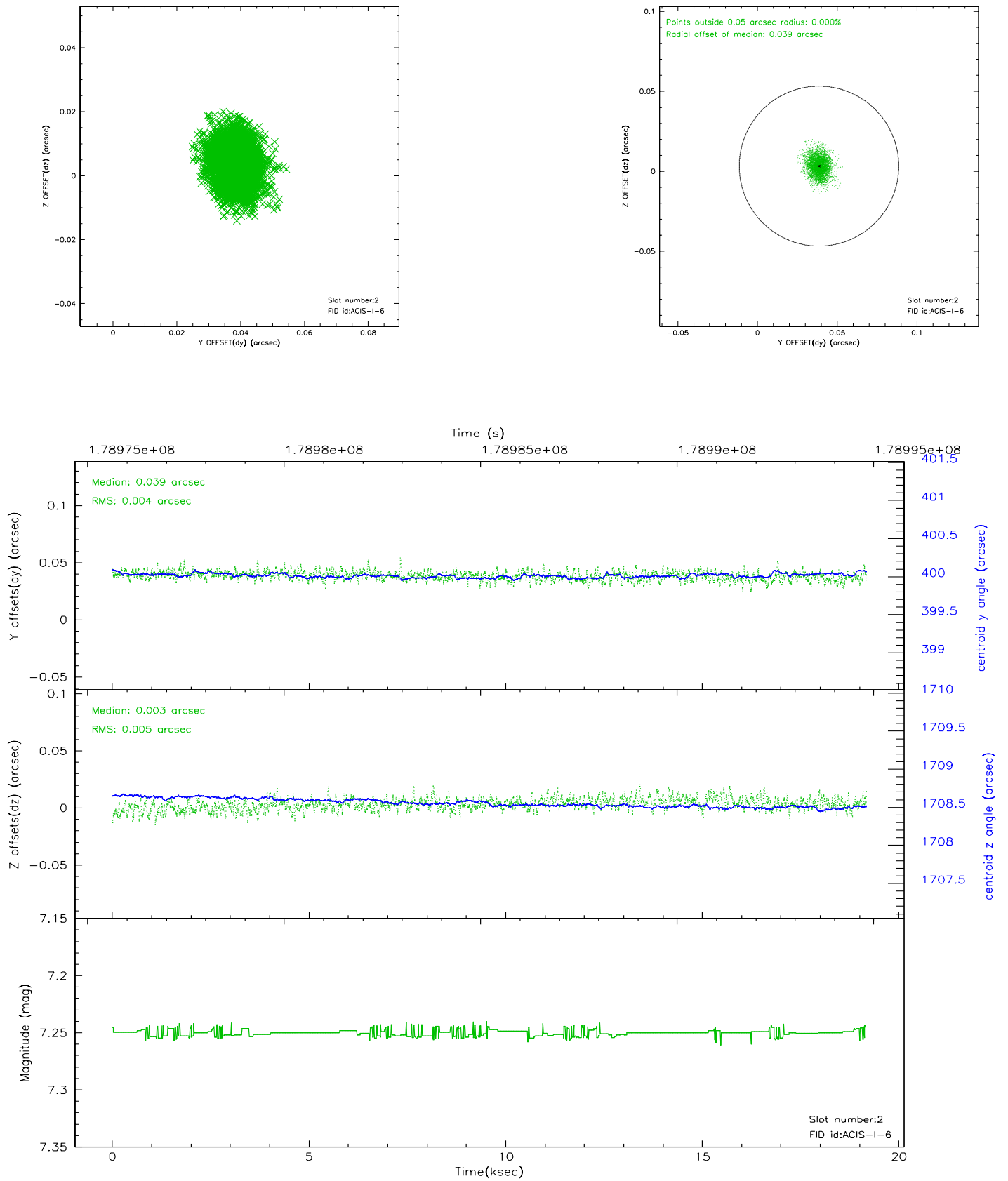
2.5.1 Slot 0



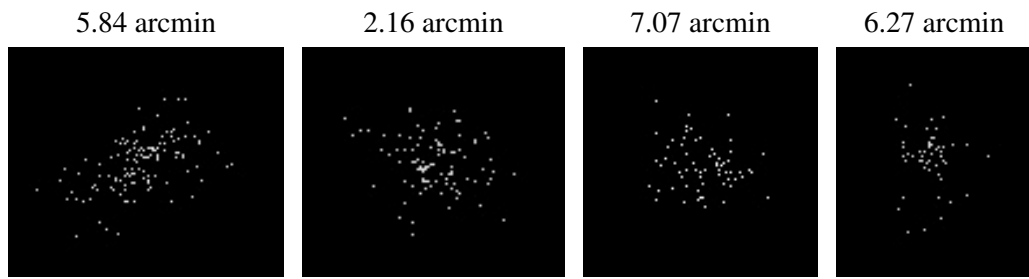
2.5.2 Slot 1



2.5.3 Slot 2



3 Point Sources



A Summary

A.1 Status

V&V Scientist	Beth Sundheim
V&V Date (YYYY-MM-DD)	2006.07.10
V&V Edition	1
V&V Disposition and Status	OK
V&V Charge Time	18.767

A.2 Comments