

# V&V Reference Report

## L2 ASCDS Version : 7.6.8

Observation 4212 - L2 Version 001  
Chandra X-Ray Center

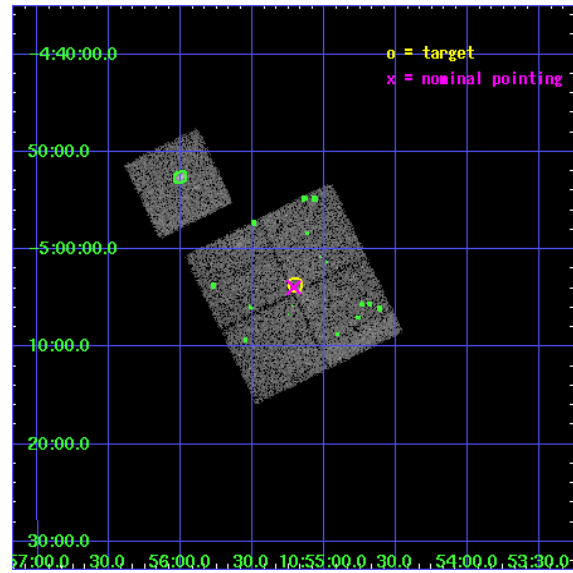
L2 Processing Date : Jul 22 2006

## Contents

<b>1</b>	<b>Front</b>	<b>2</b>
<b>2</b>	<b>OBI</b>	<b>3</b>
2.1	OBI . . . . .	3
2.1.1	Images . . . . .	3
2.1.2	Bias . . . . .	3
2.1.3	Parameters . . . . .	4
2.1.4	Events . . . . .	4
2.2	Compared Parameters . . . . .	5
2.3	Aspect . . . . .	6
2.4	Star Slots . . . . .	9
2.4.1	Slot 3 . . . . .	9
2.4.2	Slot 4 . . . . .	10
2.4.3	Slot 5 . . . . .	11
2.4.4	Slot 6 . . . . .	12
2.4.5	Slot 7 . . . . .	13
2.5	FID Slots . . . . .	14
2.5.1	Slot 0 . . . . .	14
2.5.2	Slot 1 . . . . .	15
2.5.3	Slot 2 . . . . .	16
<b>3</b>	<b>Point Sources</b>	<b>17</b>
<b>A</b>	<b>Summary</b>	<b>18</b>
A.1	Status . . . . .	18
A.2	Comments . . . . .	18

# 1 Front

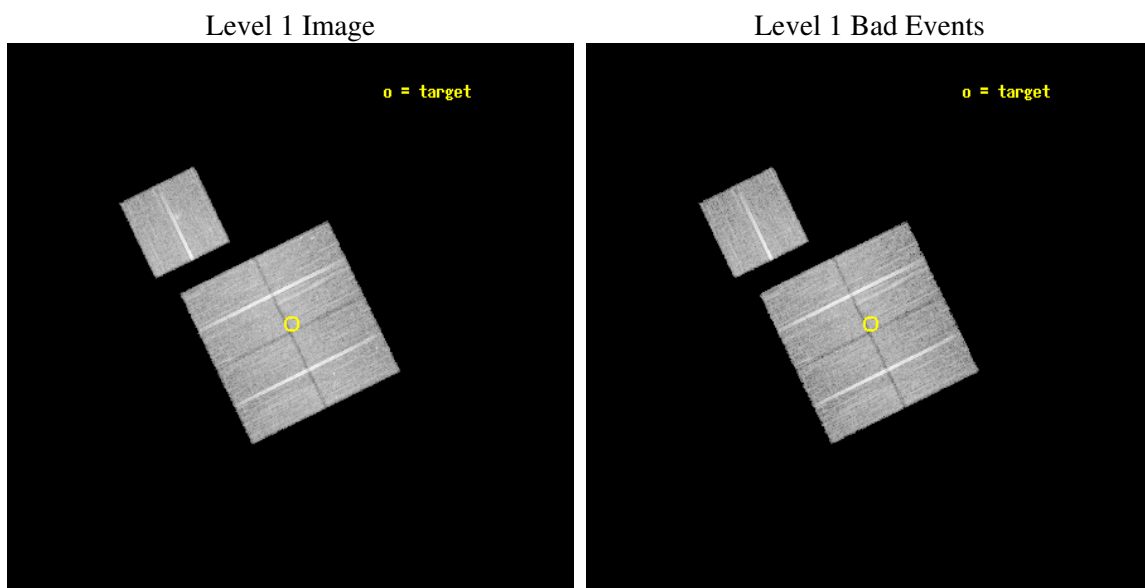
seq_num	800368
obs_id	4212
title	CHANDRA OBSERVATIONS OF DLS SHEAR-SELECTED CLUSTERS
observer	Prof. John Hughes
object	DLS J1055-0503
dtcycle	0
cycle	P
ra_targ	163.8
dec_targ	-5.061944
ra_nom	163.80308025352
dec_nom	-5.0654316653208
roll_nom	333.99990116011
revision	2
ontime	20326.658980697
livetime	20061.076216846
ontime0	20329.799960911
ontime1	20329.799960911
ontime2	20323.518020391
ontime3	20326.658980697
ontime6	20326.65896076
l2events	46458



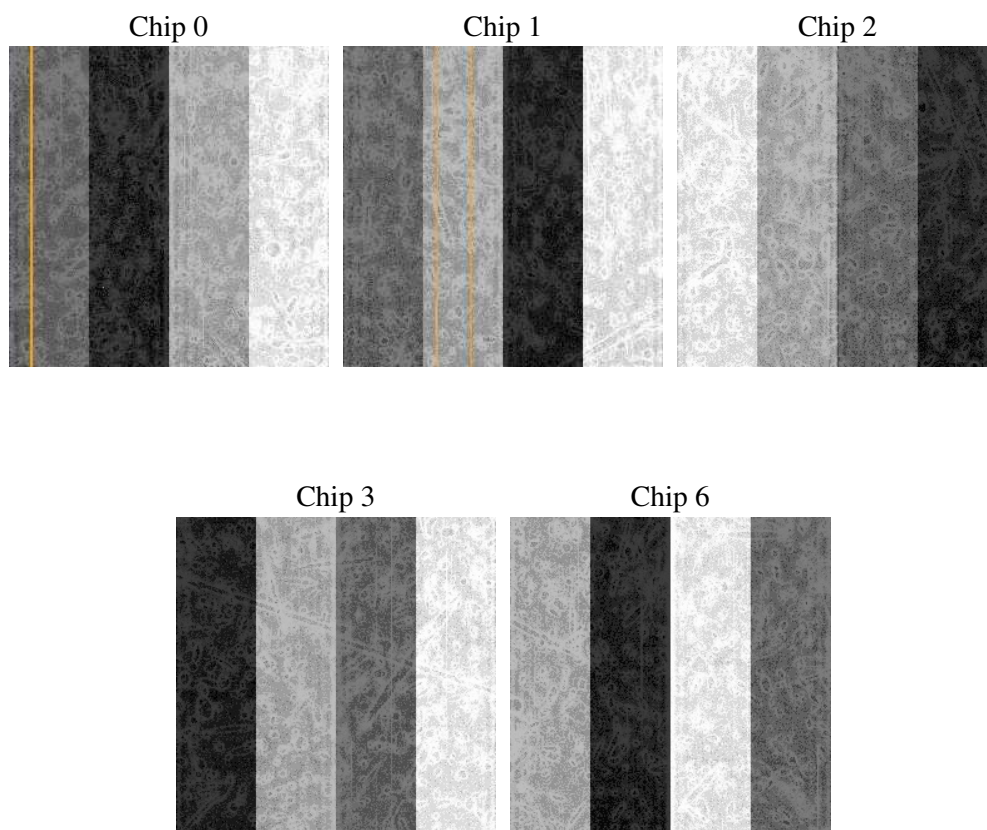
## 2 OBI

### 2.1 OBI

#### 2.1.1 Images



#### 2.1.2 Bias



### 2.1.3 Parameters

obi_num	0
ascdsver	7.6.8
caldsver	3.2.2
date	2006-07-22T16:01:41
revision	2

sched_exp_time	20150.000000
ontime	20824.885616422
ontime0	20828.026616573
ontime1	20828.026596636
ontime2	20821.744676054
ontime3	20824.885616422
ontime6	20824.885616422
l1events	560871

### 2.1.4 Events

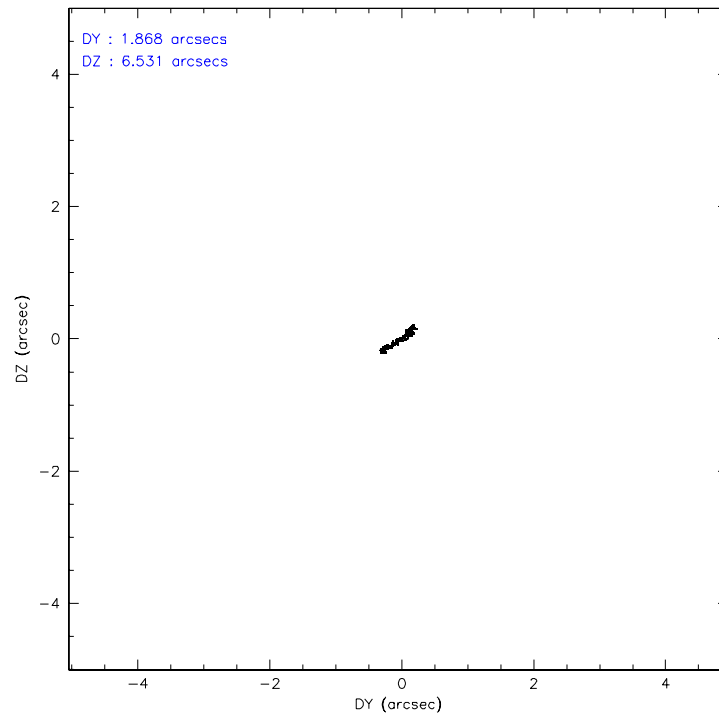
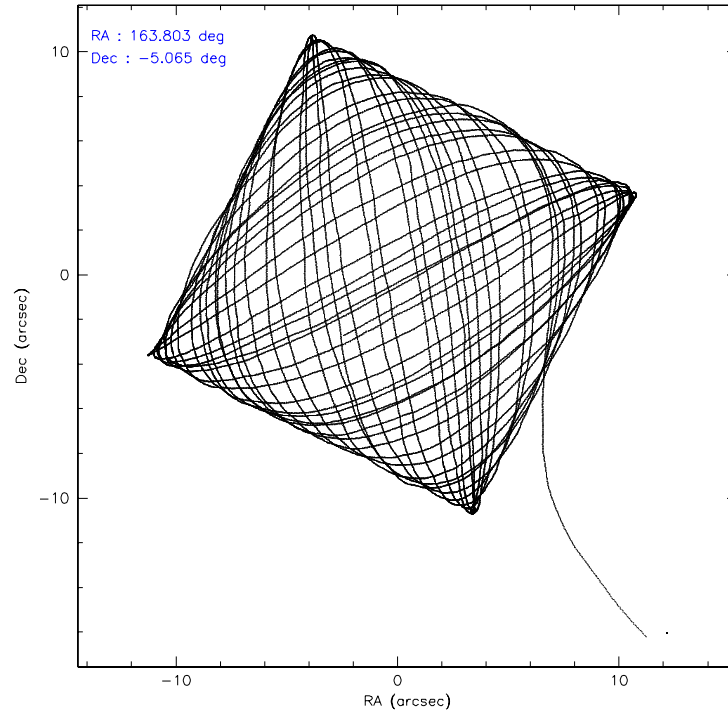
	ccd 0	ccd 1	ccd 2	ccd 3	ccd 6
level 1 events	108807	106547	117262	115234	113021
rejected events	98130	93854	106766	104676	101445
rejected %	90%	88%	91%	90%	89%

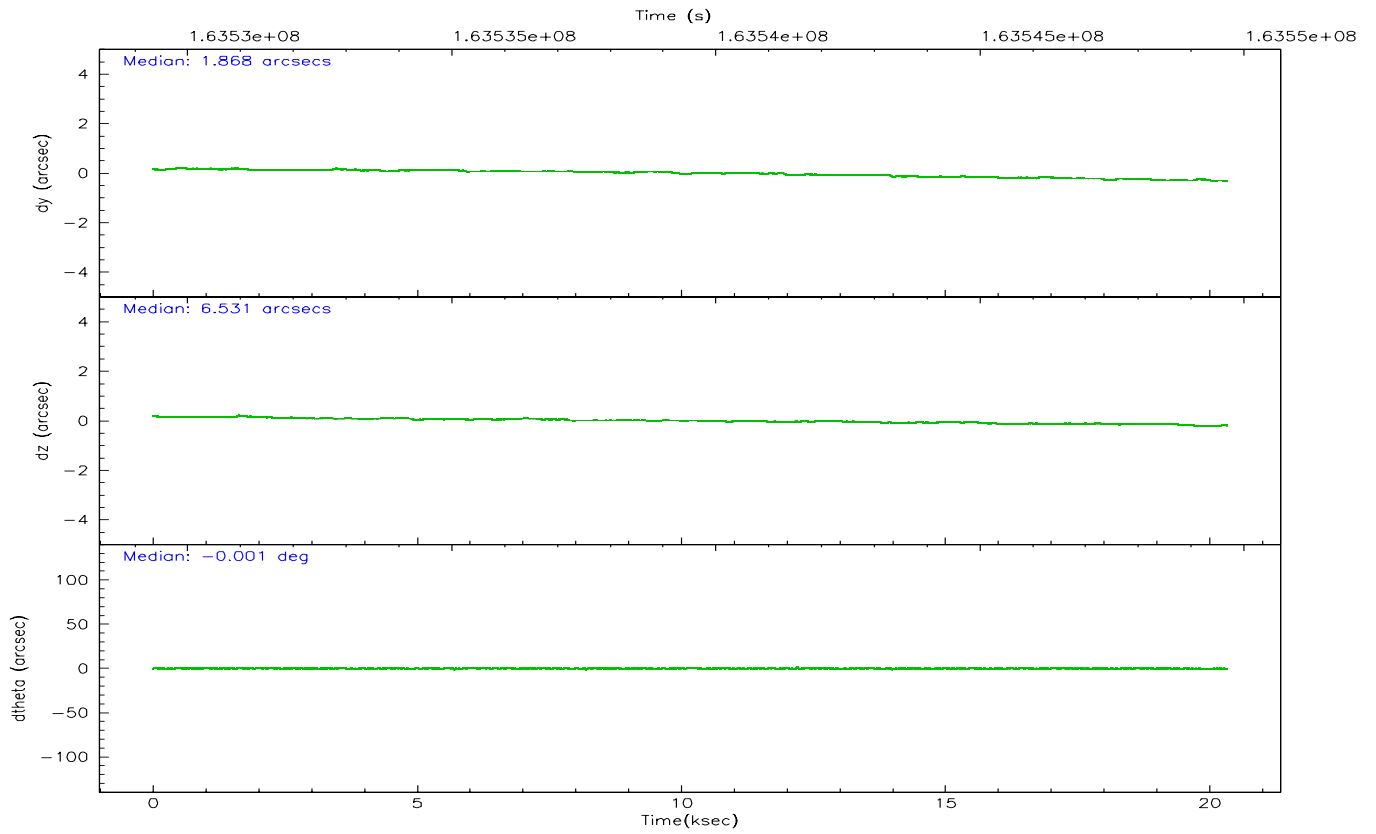
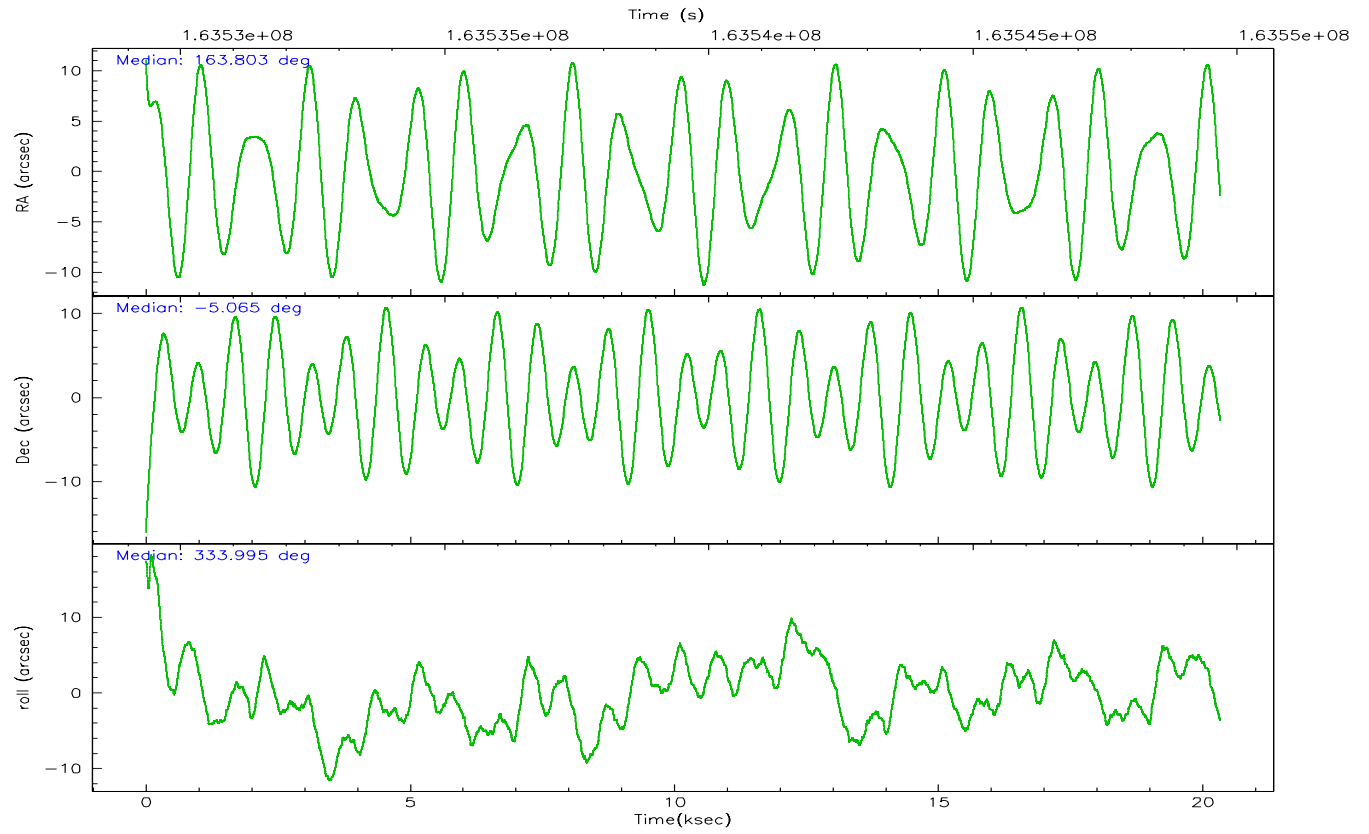
	ccd 0	ccd 1	ccd 2	ccd 3	ccd 6
grade 0 events	3700	4974	3875	3913	4350
	3%	4%	3%	3%	3%
grade 1 events	44	70	61	52	57
	0%	0%	0%	0%	0%
grade 2 events	2527	2637	2358	2215	2449
	2%	2%	2%	1%	2%
grade 3 events	1338	1457	1260	1314	1308
	1%	1%	1%	1%	1%
grade 4 events	1220	1405	1211	1296	1321
	1%	1%	1%	1%	1%
grade 5 events	3828	4079	3702	4267	4285
	3%	3%	3%	3%	3%
grade 6 events	2158	2522	2063	2092	2433
	1%	2%	1%	1%	2%
grade 7 events	93992	89403	102732	100085	96818
	86%	83%	87%	86%	85%

## 2.2 Compared Parameters

Parameter	Planned	Actual	Parameter	Planned	Actual
Instrument	ACIS	ACIS	Obspar format version number	6	6
Detector	ACIS-01236	ACIS-01236	Obspar file type	PREDICTED	ACTUAL
Grating	NONE	NONE	Obspar update status	NONE	UPDATED
Data mode	VFAINT	VFAINT	On-chip summing requested	N	N
Observation mode	POINTING	POINTING	Subarray requested	NONE	NONE
Pointing RA	163.775638	163.8030802535155	Alternating exposures requested	N	N
Pointing Dec	-5.067464	-5.065431665320761	Primary exposure time	0.000000	3.1
Pointing Roll	333.788790	333.9999011601142			
SIM focus pos (mm)	-0.782348	-0.7809083437167272			
SIM defocus (mm)	0	0.001439871863259334			
SIM translation stage pos (mm)	-233.592463	-233.5874344608287			
SIM translation stage offset (mm)	0	-0.005018542100998502			
Observation start time	163529524.184000	163528286.18397			
Observation start date	2003-03-08T16:51:00	2003-03-08T16:31:26			
Observation end time	163549674.184000	163551025.80993			
Observation end date	2003-03-08T22:26:50	2003-03-08T22:50:25			
Read mode	TIMED	TIMED			

## 2.3 Aspect





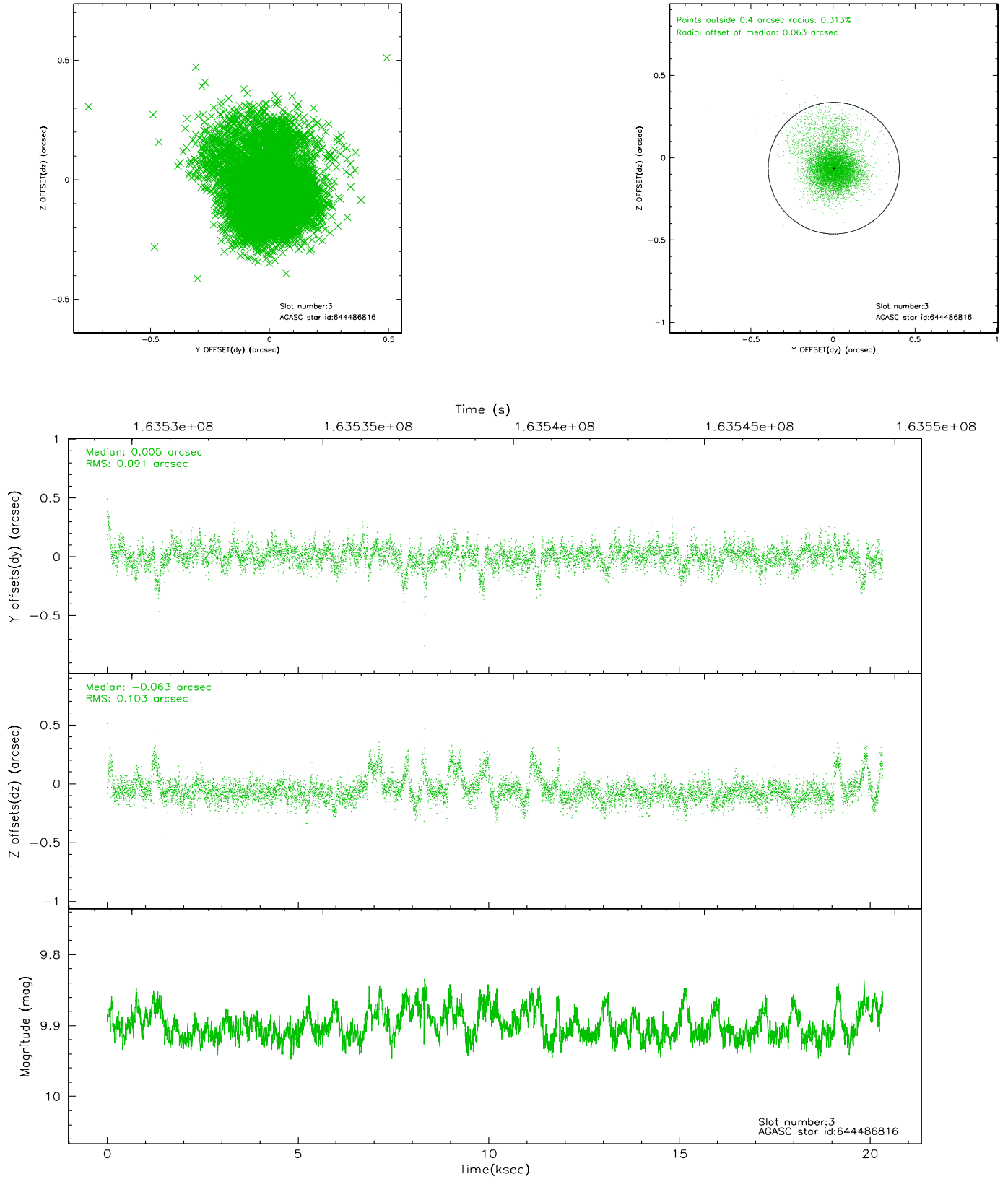
### Slot Statistics

slot	status	id	mag	n_pts	med_dy	med_dz	dr1	dr2	ra	dec	mean_y	mean_z
0	FID	ACIS-I-1	7.25	4960	-0.017	0.032	0.007	0.012	0.000000	0.000000	937.94	-829.90
1	FID	ACIS-I-5	7.24	4960	-0.037	0.040	0.006	0.012	0.000000	0.000000	-1810.05	1067.56
2	FID	ACIS-I-6	7.26	4960	-0.036	-0.002	0.007	0.013	0.000000	0.000000	403.32	1712.19
3	GUIDE	644486816	9.90	9915	0.005	-0.063	0.131	0.271	164.182819	-4.895311	1036.91	1200.97
4	GUIDE	644879464	9.27	9917	0.151	-0.035	0.102	0.174	163.397635	-5.401358	-683.71	-1676.95
5	GUIDE	644880304	9.31	9916	0.083	0.090	0.127	0.212	163.275517	-5.533070	-866.74	-2295.92
6	GUIDE	644885144	10.32	9915	-0.085	-0.031	0.163	0.276	164.424788	-5.211007	2316.81	563.43
7	GUIDE	644883248	9.38	9906	-0.150	0.032	0.112	0.177	163.825254	-5.853252	1409.52	-2459.07

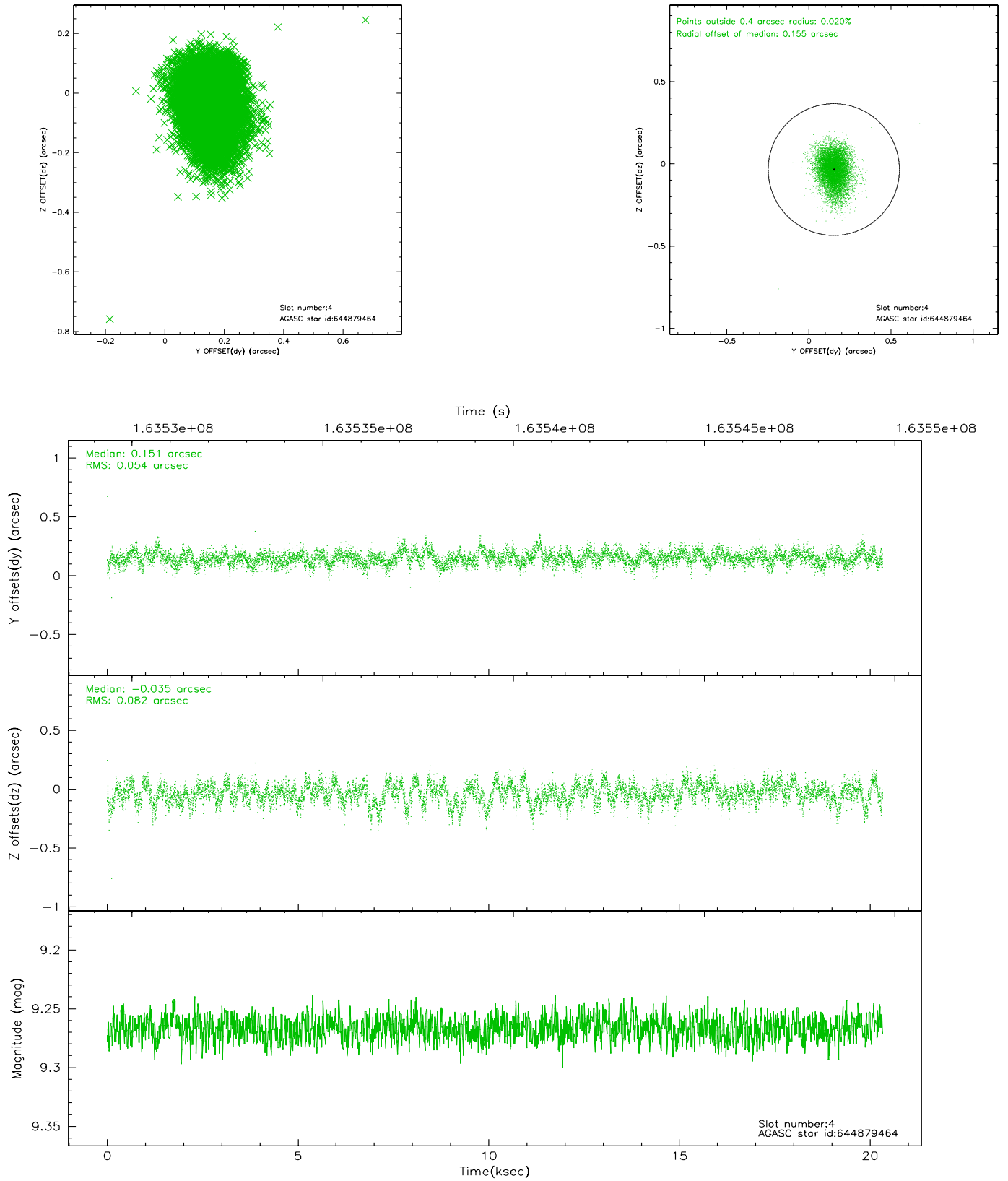


## 2.4 Star Slots

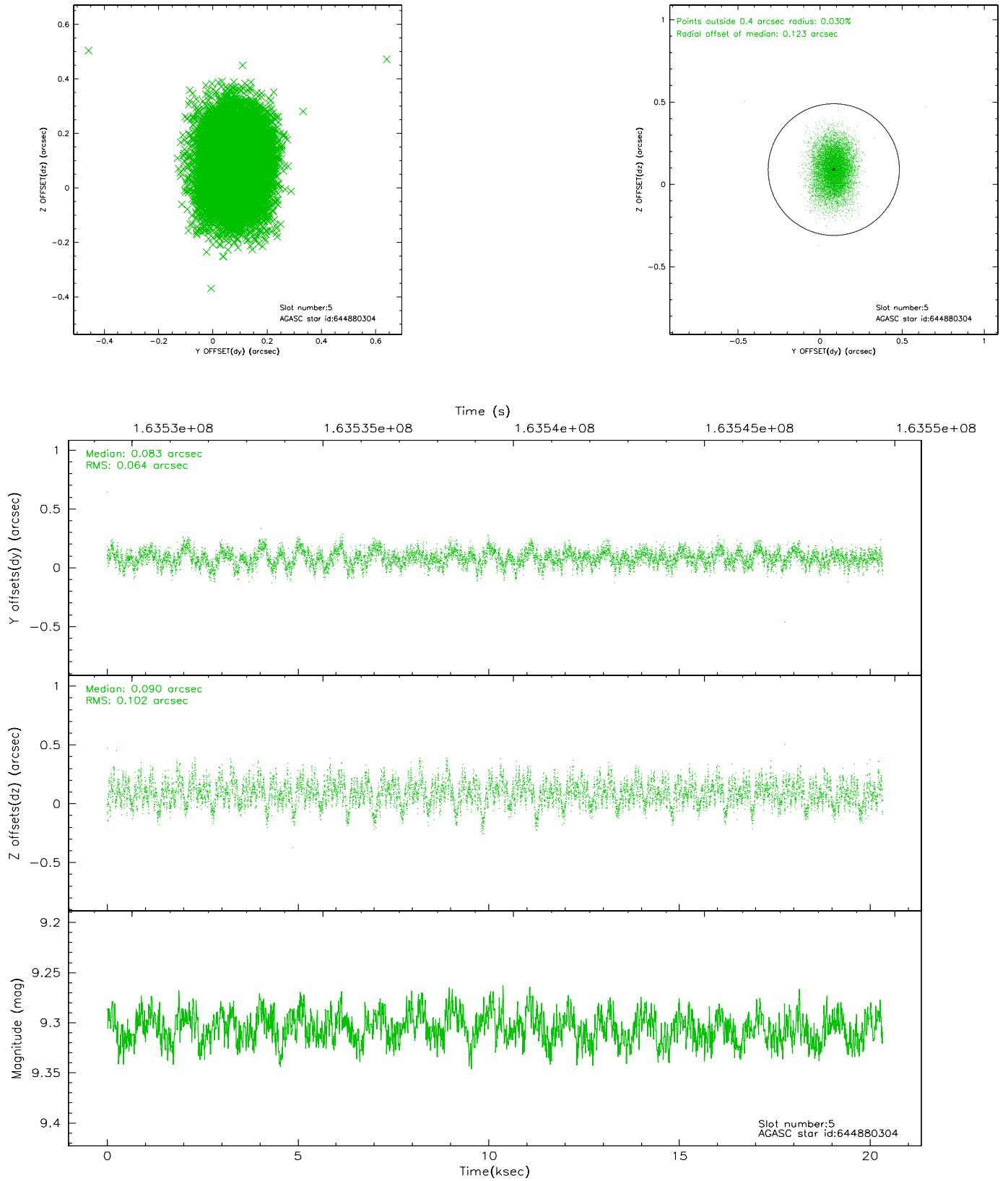
### 2.4.1 Slot 3



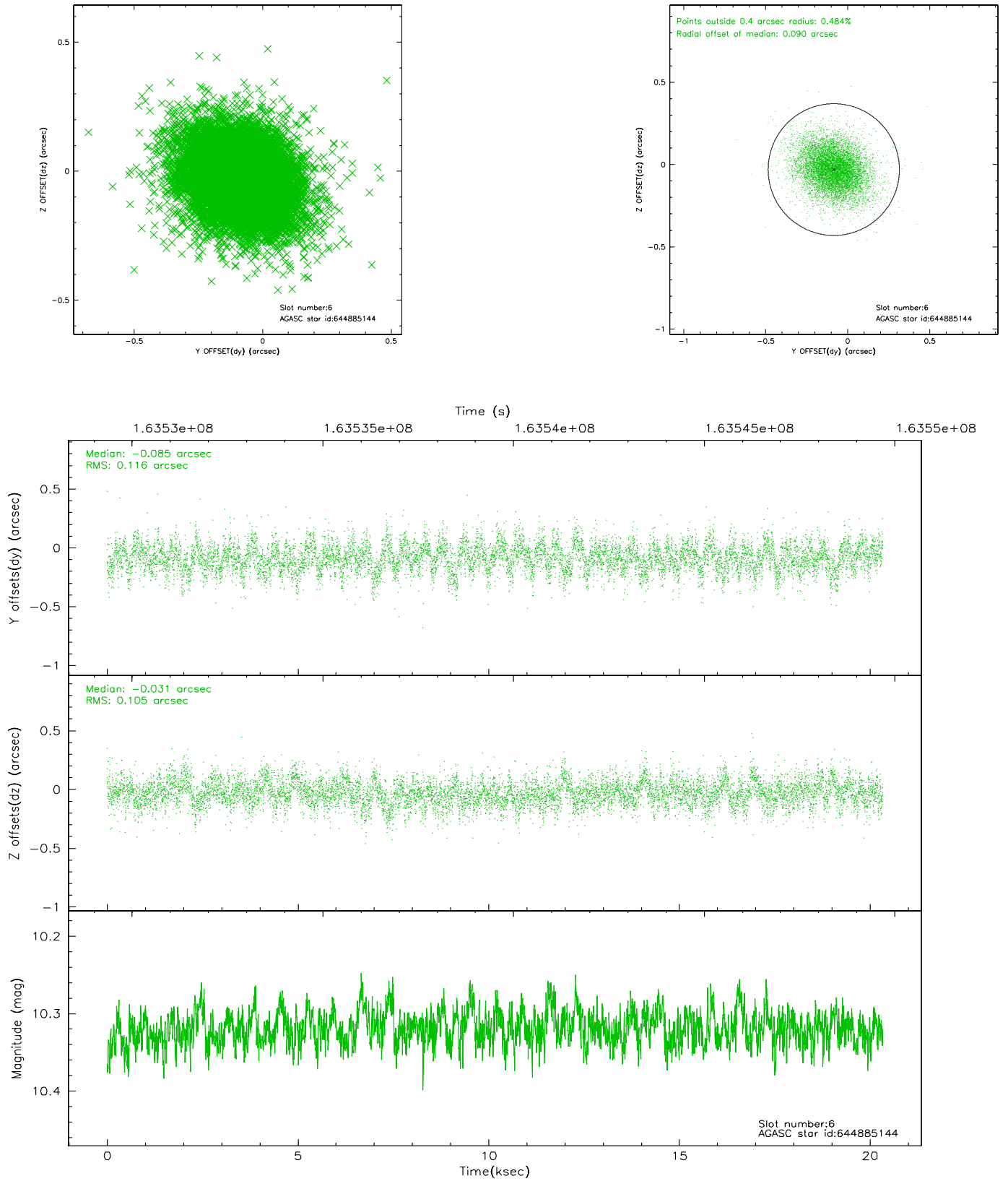
## 2.4.2 Slot 4



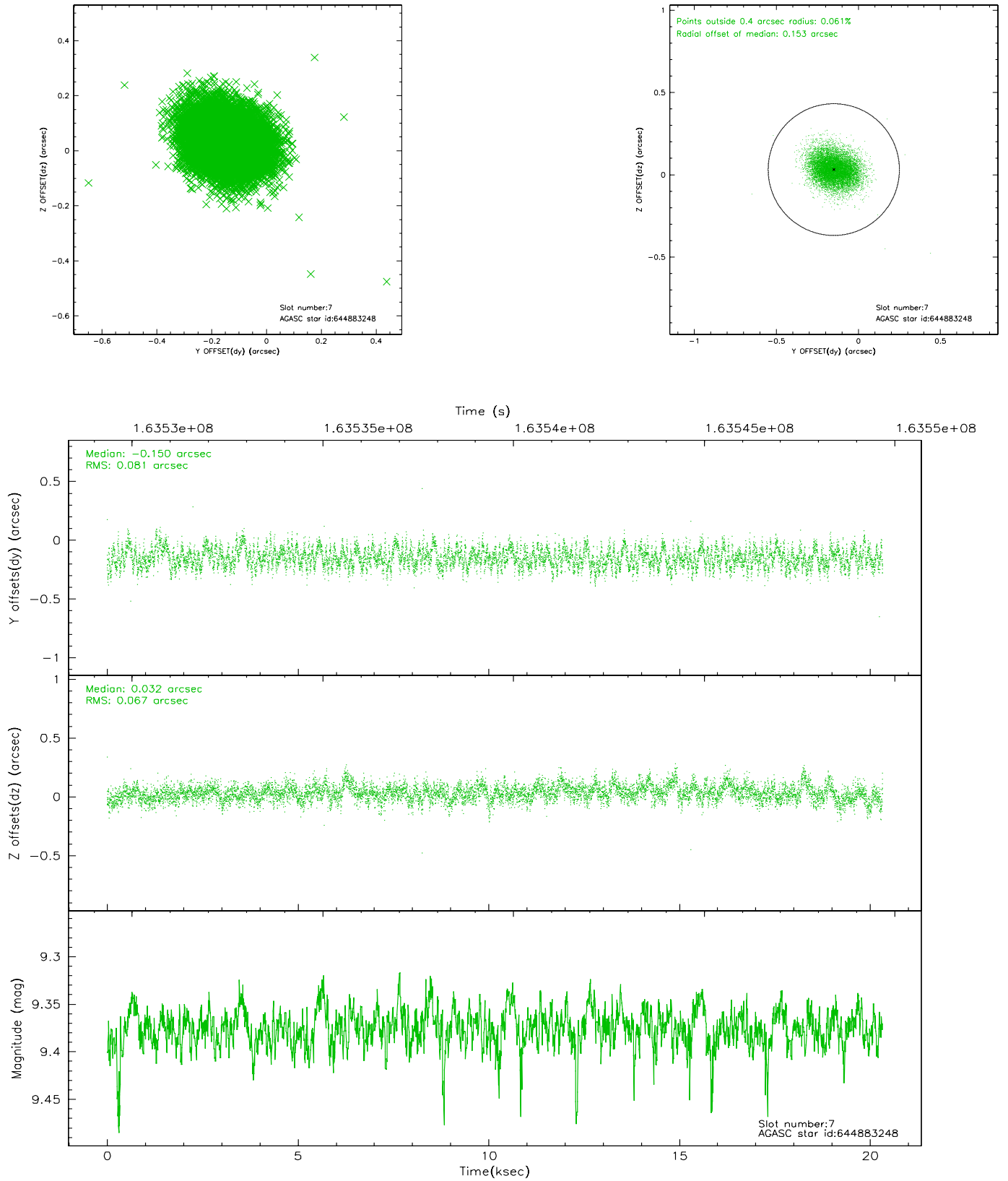
### 2.4.3 Slot 5



## 2.4.4 Slot 6

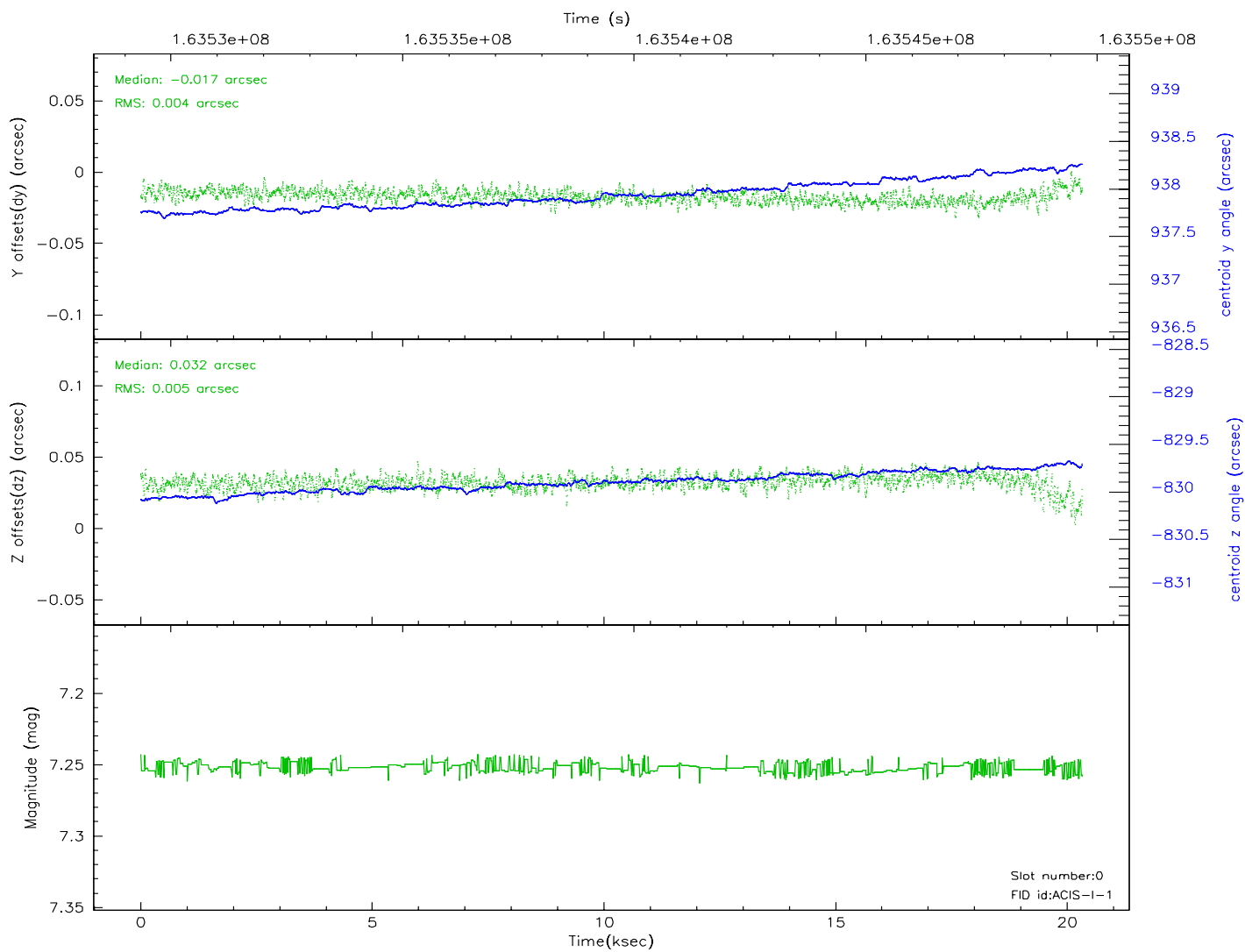
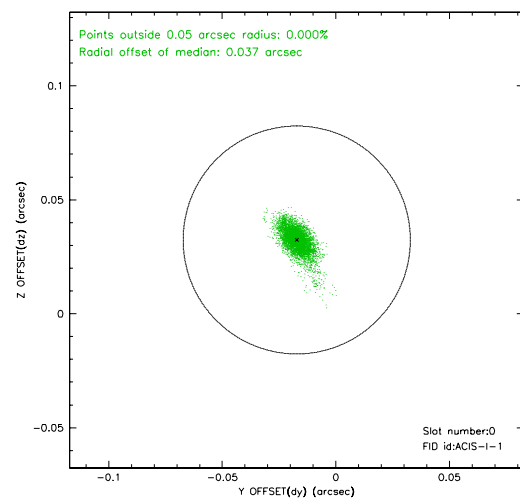
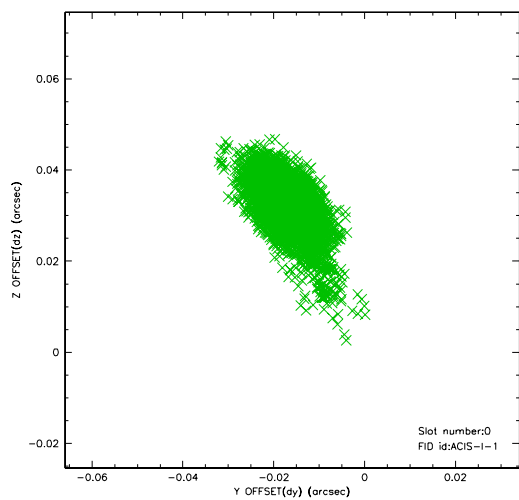


## 2.4.5 Slot 7

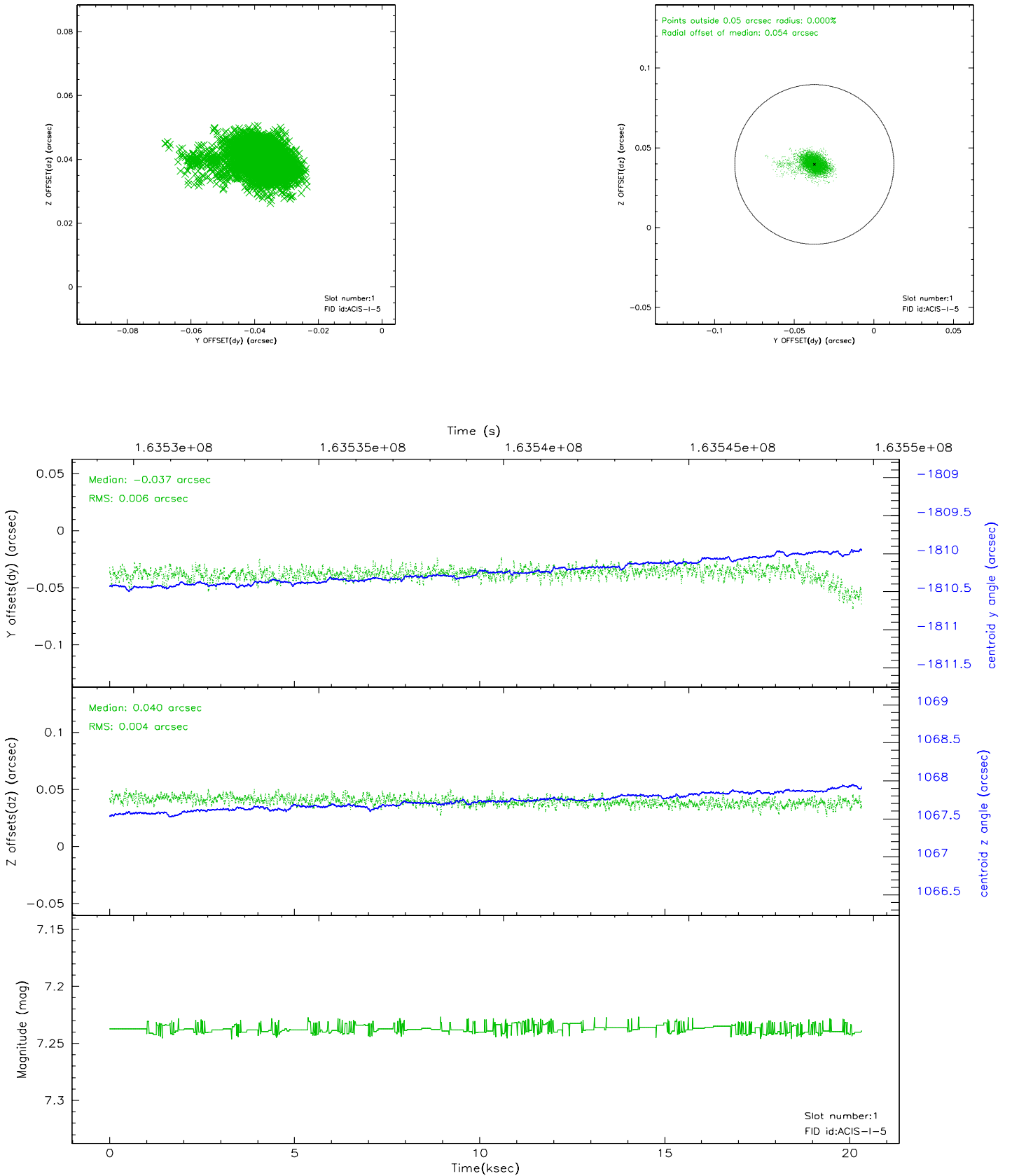


## 2.5 FID Slots

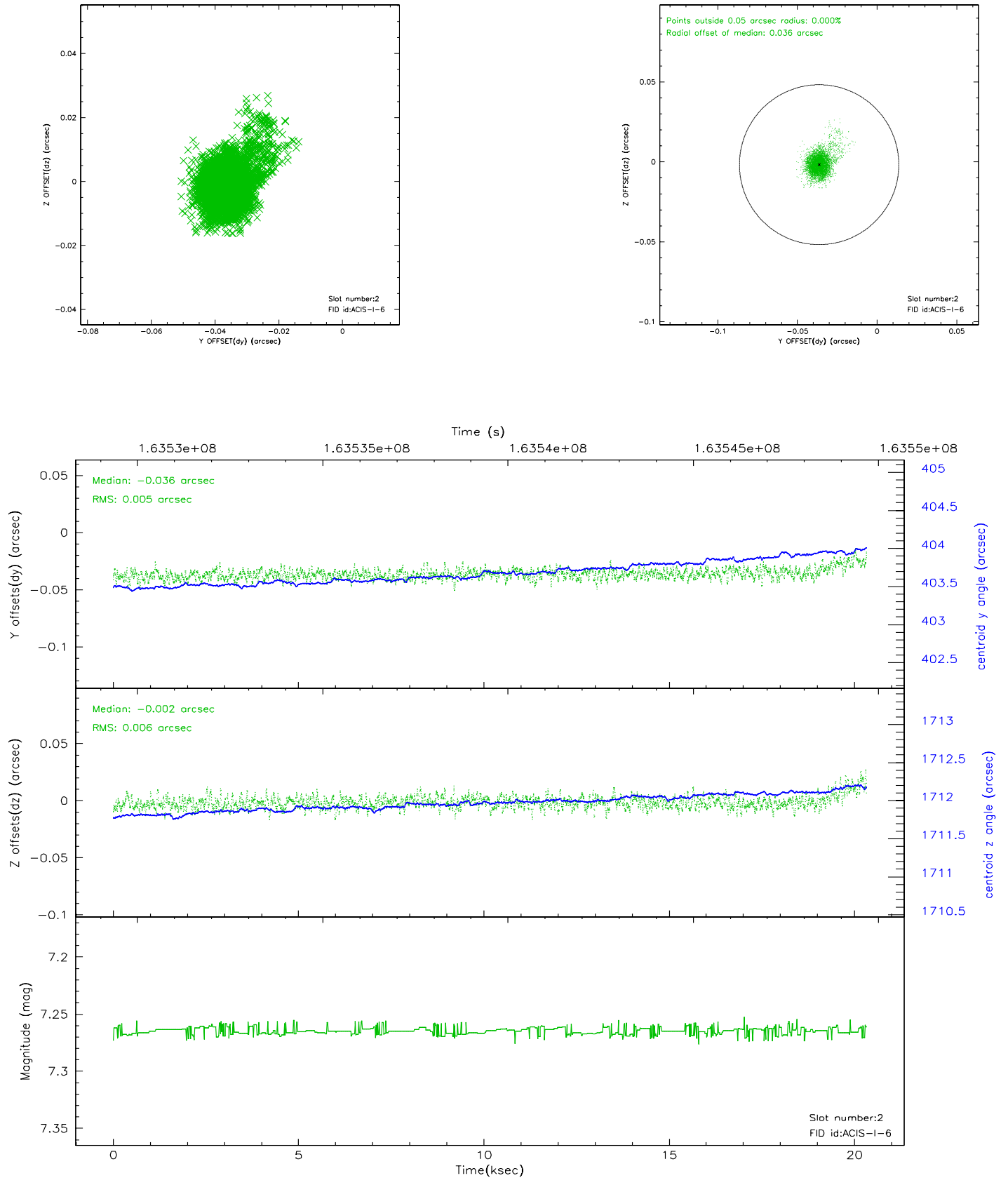
### 2.5.1 Slot 0



## 2.5.2 Slot 1

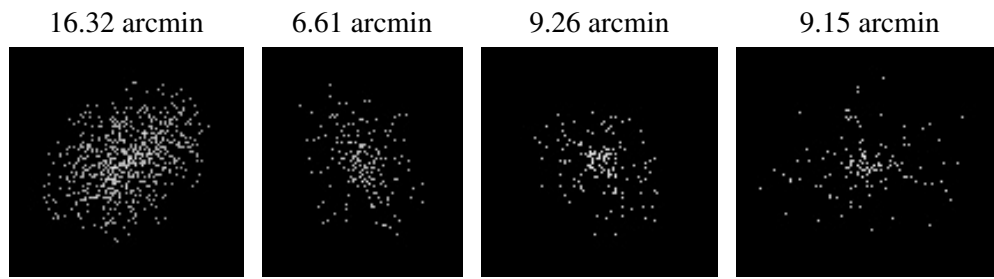


### 2.5.3 Slot 2





### 3 Point Sources



## A Summary

### A.1 Status

V&V Scientist	Beth Sundheim
V&V Date (YYYY-MM-DD)	2006.07.23
V&V Edition	1
V&V Disposition and Status	OK
V&V Charge Time	20.326

### A.2 Comments