

V&V Reference Report

L2 ASCDS Version : 7.6.9

Observation 4209 - L2 Version 001
Chandra X-Ray Center

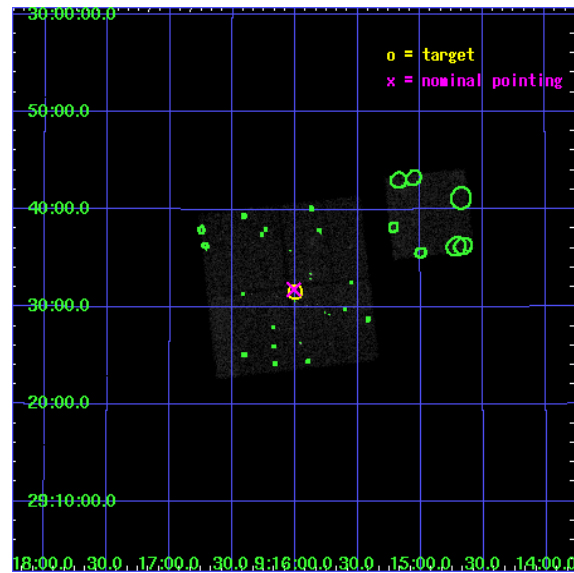
L2 Processing Date : Oct 15 2006

Contents

1	Front	2
2	OBI	3
2.1	OBI	3
2.1.1	Images	3
2.1.2	Bias	3
2.1.3	Parameters	4
2.1.4	Events	4
2.2	Compared Parameters	5
2.3	Aspect	6
2.4	Star Slots	9
2.4.1	Slot 3	9
2.4.2	Slot 4	10
2.4.3	Slot 5	11
2.4.4	Slot 6	12
2.5	FID Slots	13
2.5.1	Slot 0	13
2.5.2	Slot 1	14
2.5.3	Slot 2	15
3	Point Sources	16
A	Summary	17
A.1	Status	17
A.2	Comments	17

1 Front

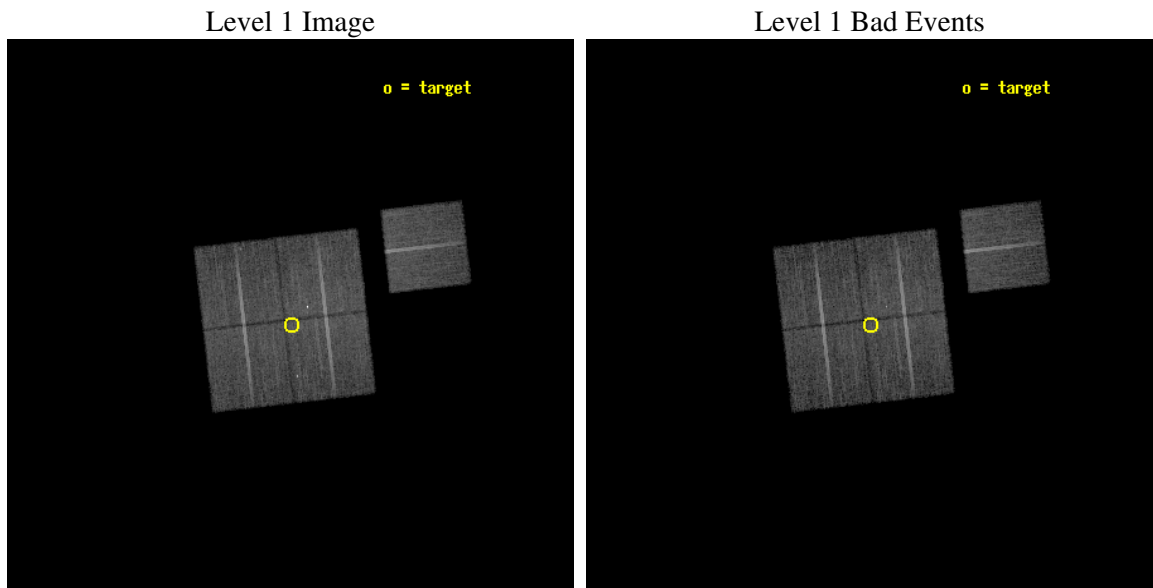
seq_num	800365
obs_id	4209
title	CHANDRA OBSERVATIONS OF DLS SHEAR-SELECTED CLUSTERS
observer	Prof. John Hughes
object	DLS J0916+2931
dtcycle	0
cycle	P
ra_targ	139.0
dec_targ	29.526111
ra_nom	139.00262037861
dec_nom	29.530103283173
roll_nom	83.481568213358
revision	3
ontime	19471.059061974
livetime	19216.655340944
ontime0	19474.199962556
ontime1	19474.199962556
ontime2	19471.058962405
ontime3	19471.059061974
ontime6	19471.058982313
l2events	46188



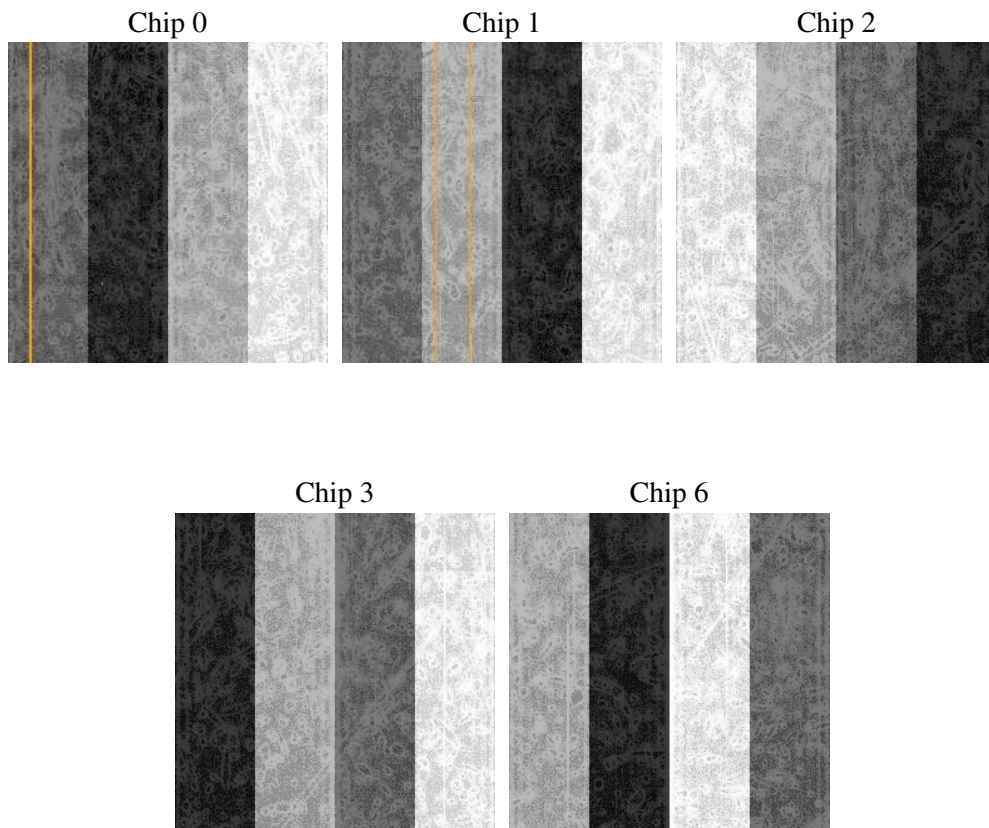
2 OBI

2.1 OBI

2.1.1 Images



2.1.2 Bias



2.1.3 Parameters

obi_num	0
ascdsver	7.6.9
caldbver	3.2.3
date	2006-10-15T05:36:45
revision	3

sched_exp_time	19353.000000
ontime	19474.257372141
ontime0	19477.398272723
ontime1	19477.398272723
ontime2	19474.257272571
ontime3	19474.257372141
ontime6	19474.257292479
l1events	502642

2.1.4 Events

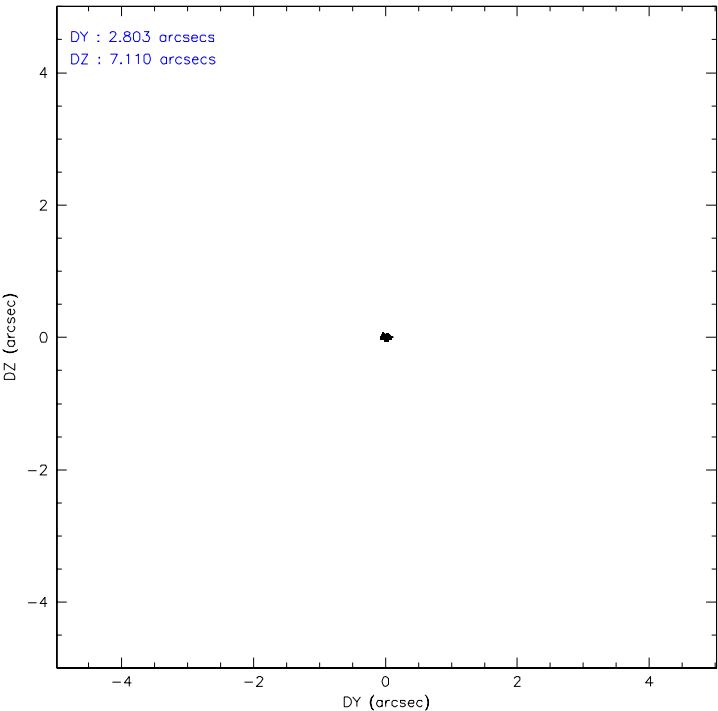
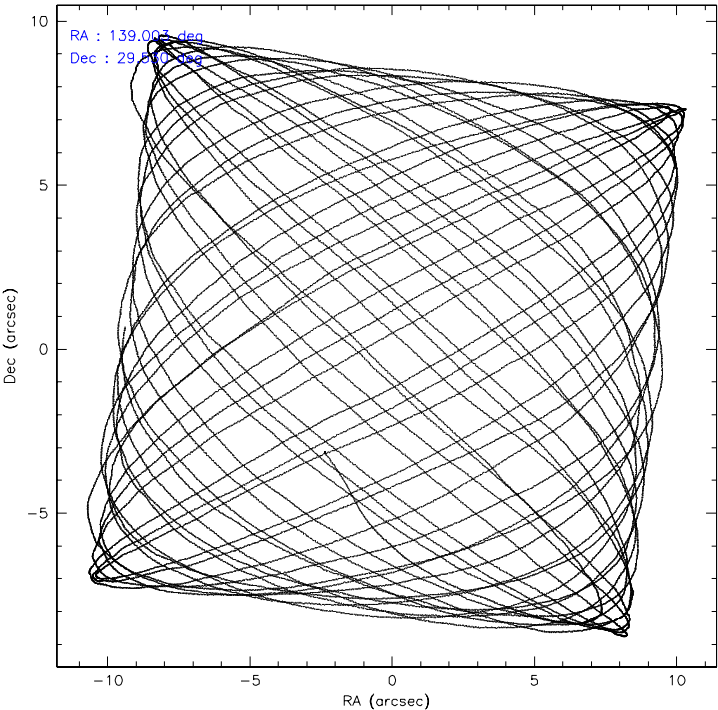
	ccd 0	ccd 1	ccd 2	ccd 3	ccd 6
level 1 events	94908	94445	110919	100713	101657
rejected events	84773	83220	97761	90458	91172
rejected %	89%	88%	88%	89%	89%

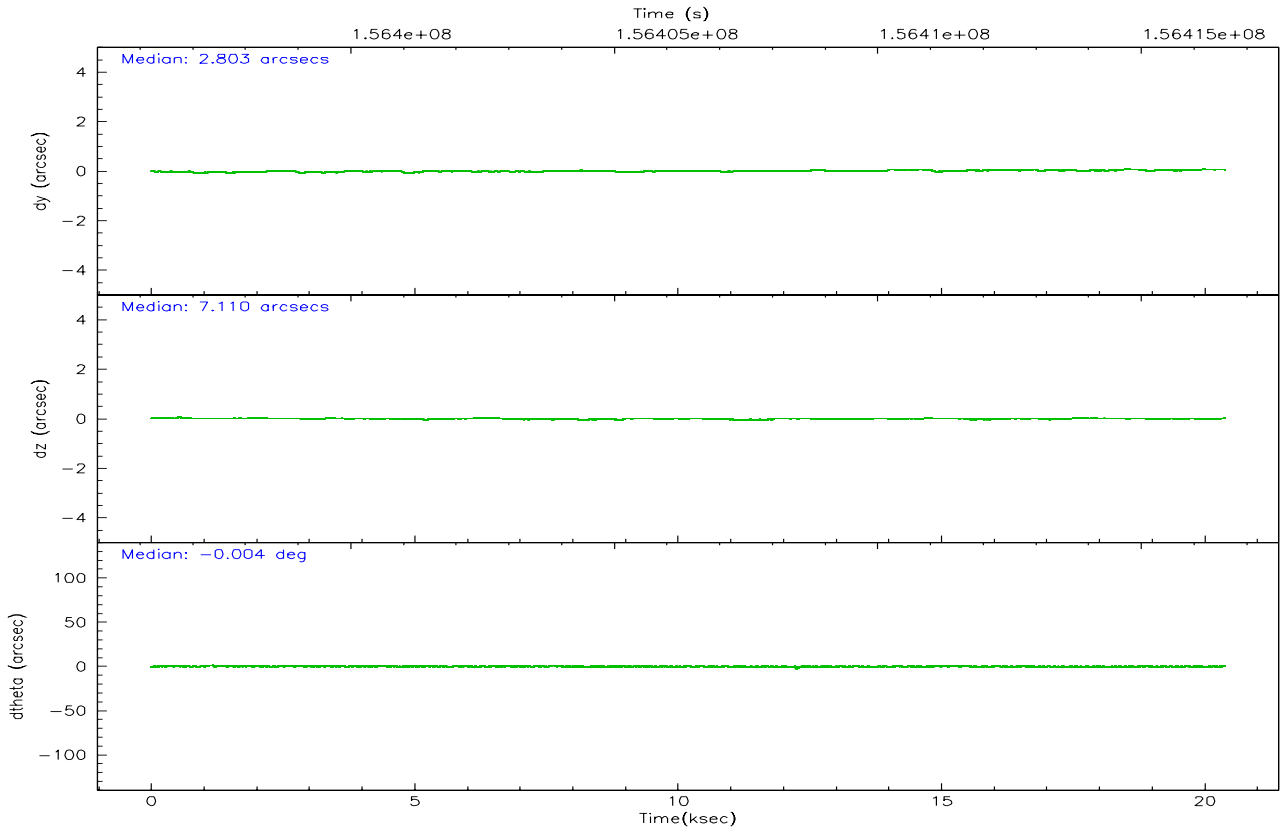
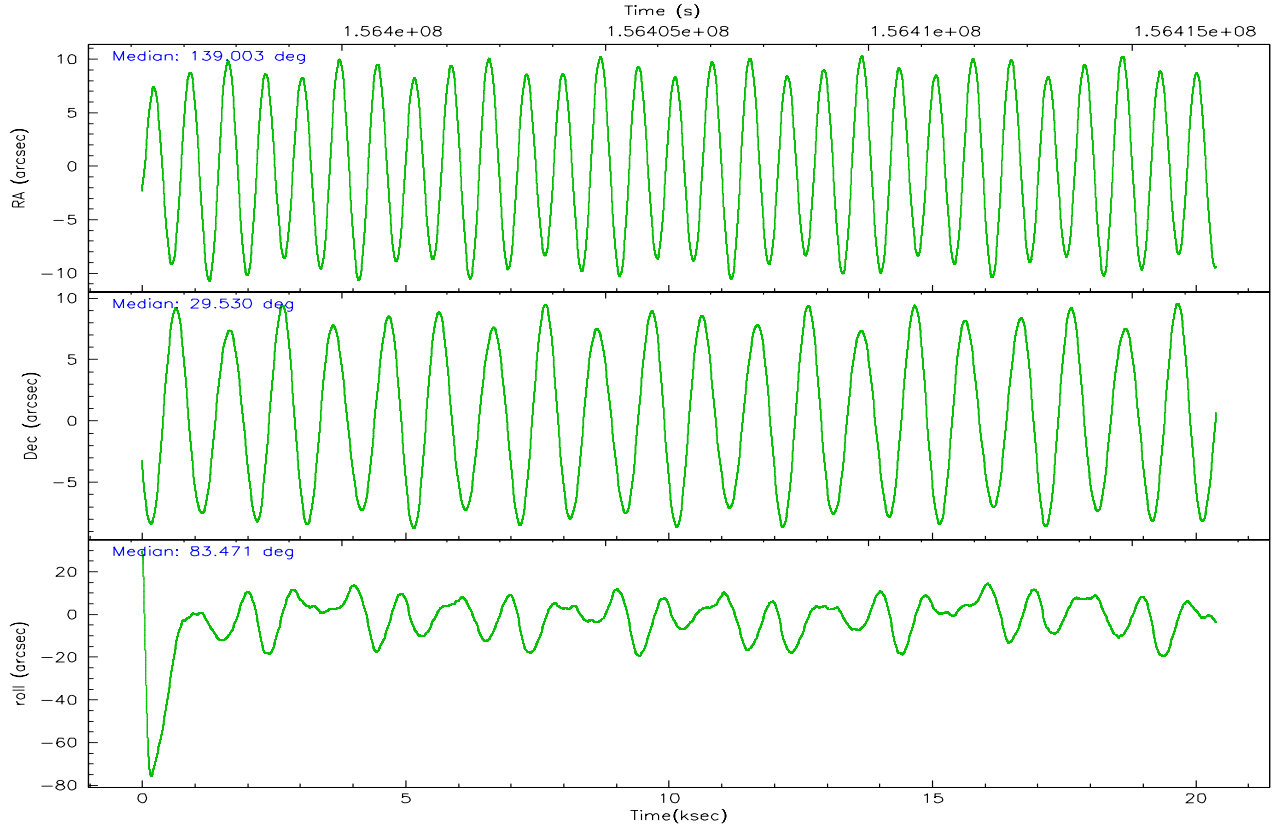
	ccd 0	ccd 1	ccd 2	ccd 3	ccd 6
grade 0 events	3557	4110	6194	4053	3780
	3%	4%	5%	4%	3%
grade 1 events	39	46	186	54	44
	0%	0%	0%	0%	0%
grade 2 events	2386	2305	2697	2051	2172
	2%	2%	2%	2%	2%
grade 3 events	1176	1304	1205	1202	1167
	1%	1%	1%	1%	1%
grade 4 events	1125	1218	1220	1089	1162
	1%	1%	1%	1%	1%
grade 5 events	3421	3796	3306	3831	3816
	3%	4%	2%	3%	3%
grade 6 events	1891	2291	1842	1862	2207
	1%	2%	1%	1%	2%
grade 7 events	81313	79375	94269	86571	87309
	85%	84%	84%	85%	85%

2.2 Compared Parameters

Parameter	Planned	Actual	Parameter	Planned	Actual
Instrument	ACIS	ACIS	Obspar format version number	6	6
Detector	ACIS-01236	ACIS-01236	Obspar file type	PREDICTED	ACTUAL
Grating	NONE	NONE	Obspar update status	NONE	UPDATED
Data mode	VFAINT	VFAINT	Number of optional ACIS chips dropped	0	0
Observation mode	POINTING	POINTING	On-chip summing requested	N	N
Pointing RA	139.015279	139.0026203786142	Subarray requested	NONE	NONE
Pointing Dec	29.505074	29.53010328317285	Alternating exposures requested	N	N
Pointing Roll	83.266643	83.48156821335783	Primary exposure time	0.000000	3.1
SIM focus pos (mm)	-0.782348	-0.7809083437167272			
SIM defocus (mm)	0	0.001439871863259334			
SIM translation stage pos (mm)	-233.592463	-233.5874344608287			
SIM translation stage offset (mm)	0	-0.005018542100998502			
Observation start time	156397242.184000	156395850.54754			
Observation start date	2002-12-16T03:39:38	2002-12-16T03:17:30			
Observation end time	156416595.184000	156417486.24844			
Observation end date	2002-12-16T09:02:11	2002-12-16T09:18:06			
Read mode	TIMED	TIMED			

2.3 Aspect



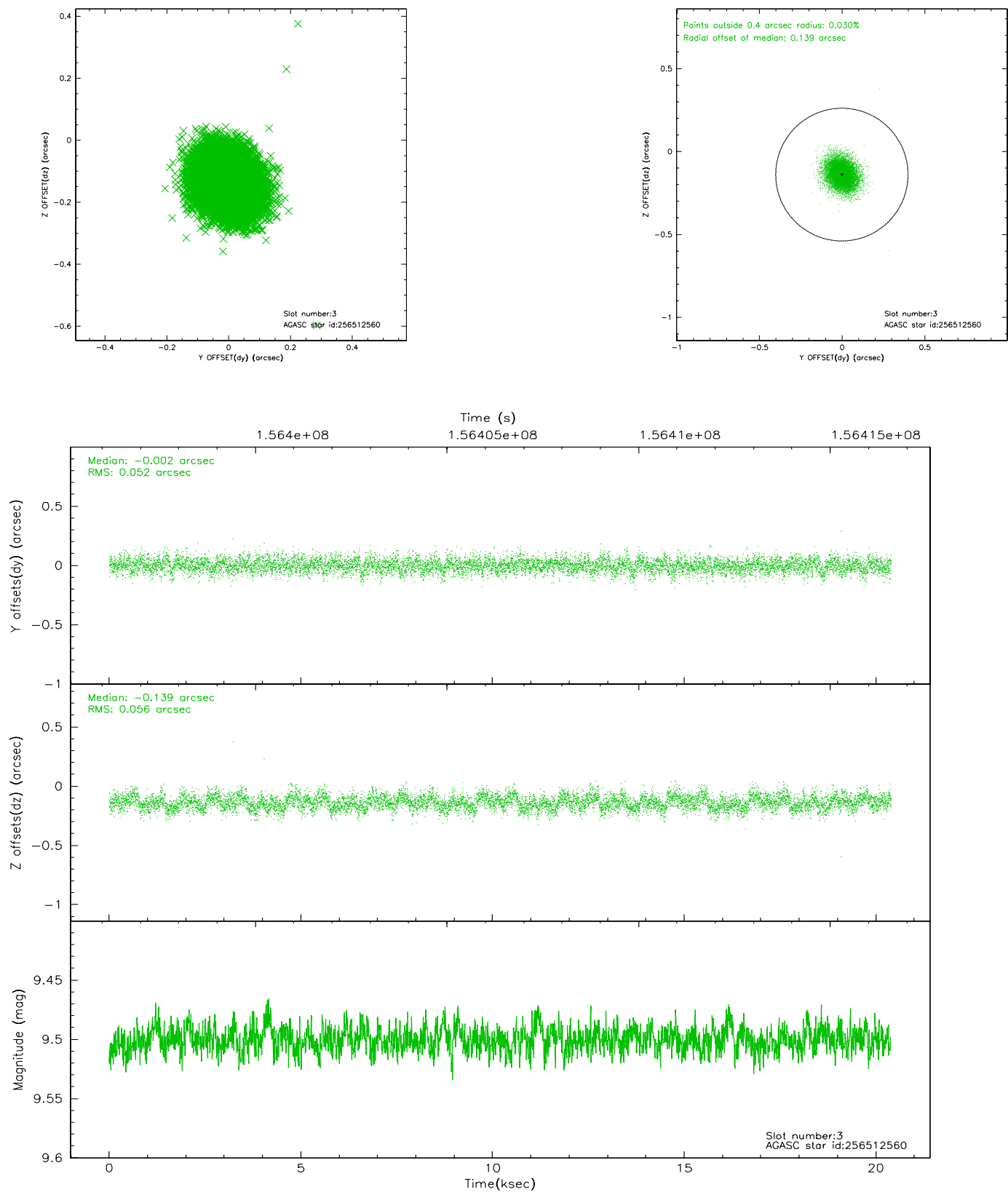


Slot Statistics

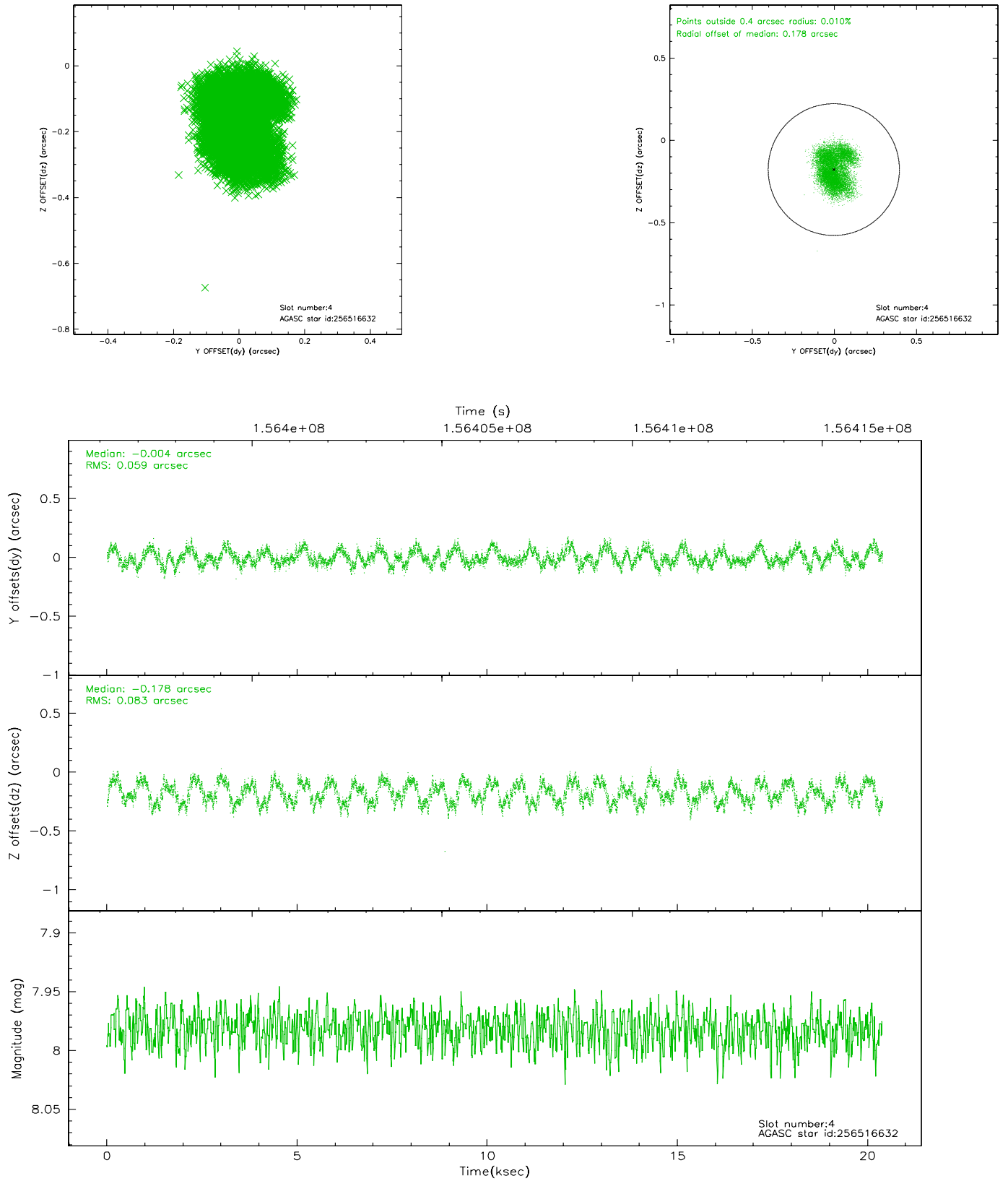
slot	status	id	mag	n_pts	med_dy	med_dz	dr1	dr2	ra	dec	mean_y	mean_z
0	FID	ACIS-I-1	7.25	4975	0.050	-0.033	0.007	0.012	0.000000	0.000000	937.08	-830.50
1	FID	ACIS-I-5	7.24	4974	0.119	0.146	0.006	0.010	0.000000	0.000000	-1810.94	1066.96
2	FID	ACIS-I-6	7.25	4974	-0.260	-0.043	0.007	0.012	0.000000	0.000000	402.01	1711.57
3	GUIDE	256512560	9.50	9939	-0.002	-0.139	0.080	0.131	138.888209	29.792531	981.60	515.76
4	GUIDE	256516632	7.98	9949	-0.004	-0.178	0.113	0.163	138.597890	29.944780	1421.85	1479.18
5	GUIDE	256645808	9.16	9942	0.087	0.141	0.088	0.143	139.646005	29.740726	1079.71	-1857.14
6	GUIDE	256646640	8.19	9948	-0.086	0.176	0.077	0.129	139.706384	29.820517	1387.84	-2009.15
7	OMITTED		0.00	0	0.000	0.000	0.000	0.000	0.000000	0.000000	0.00	0.00

2.4 Star Slots

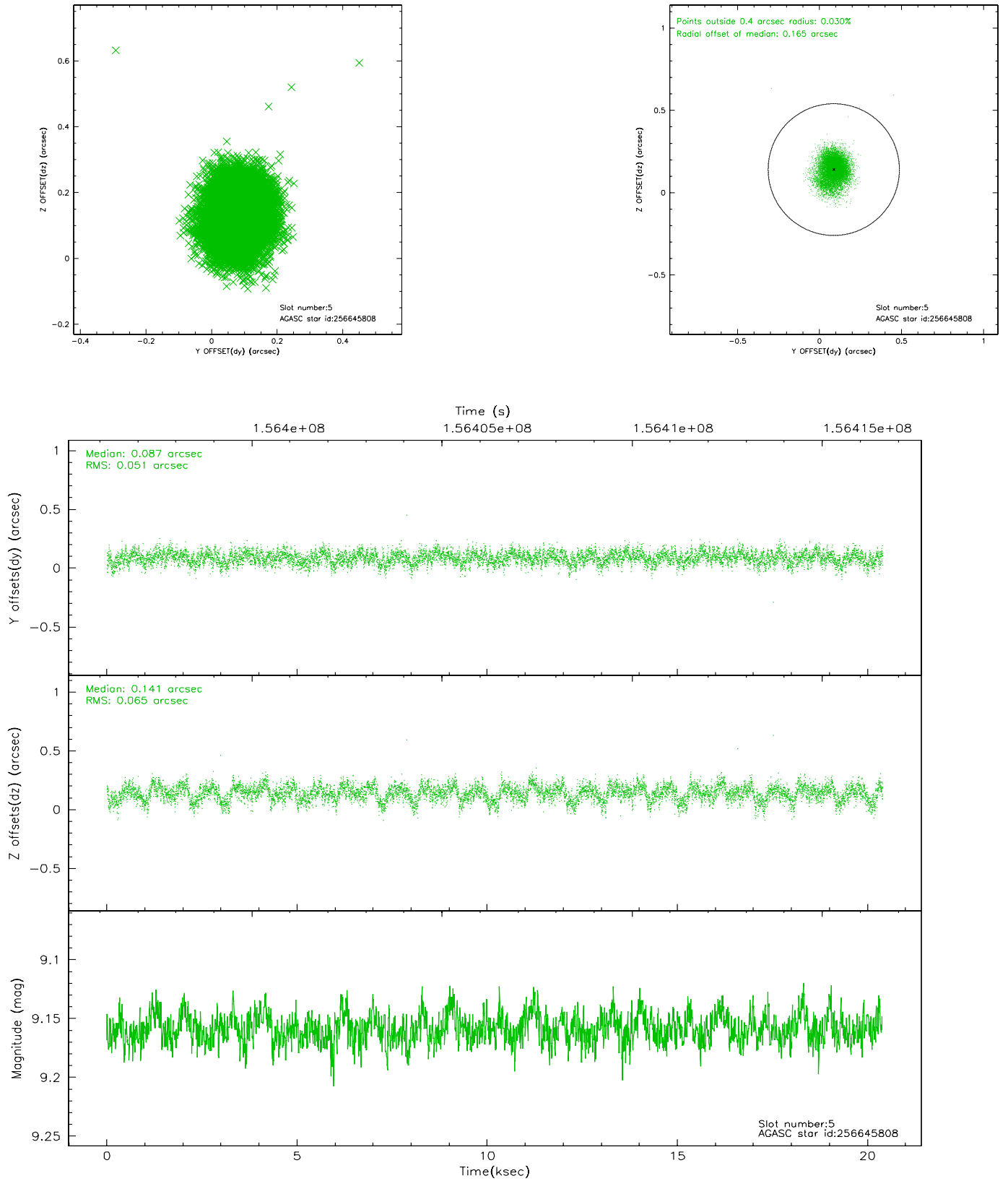
2.4.1 Slot 3



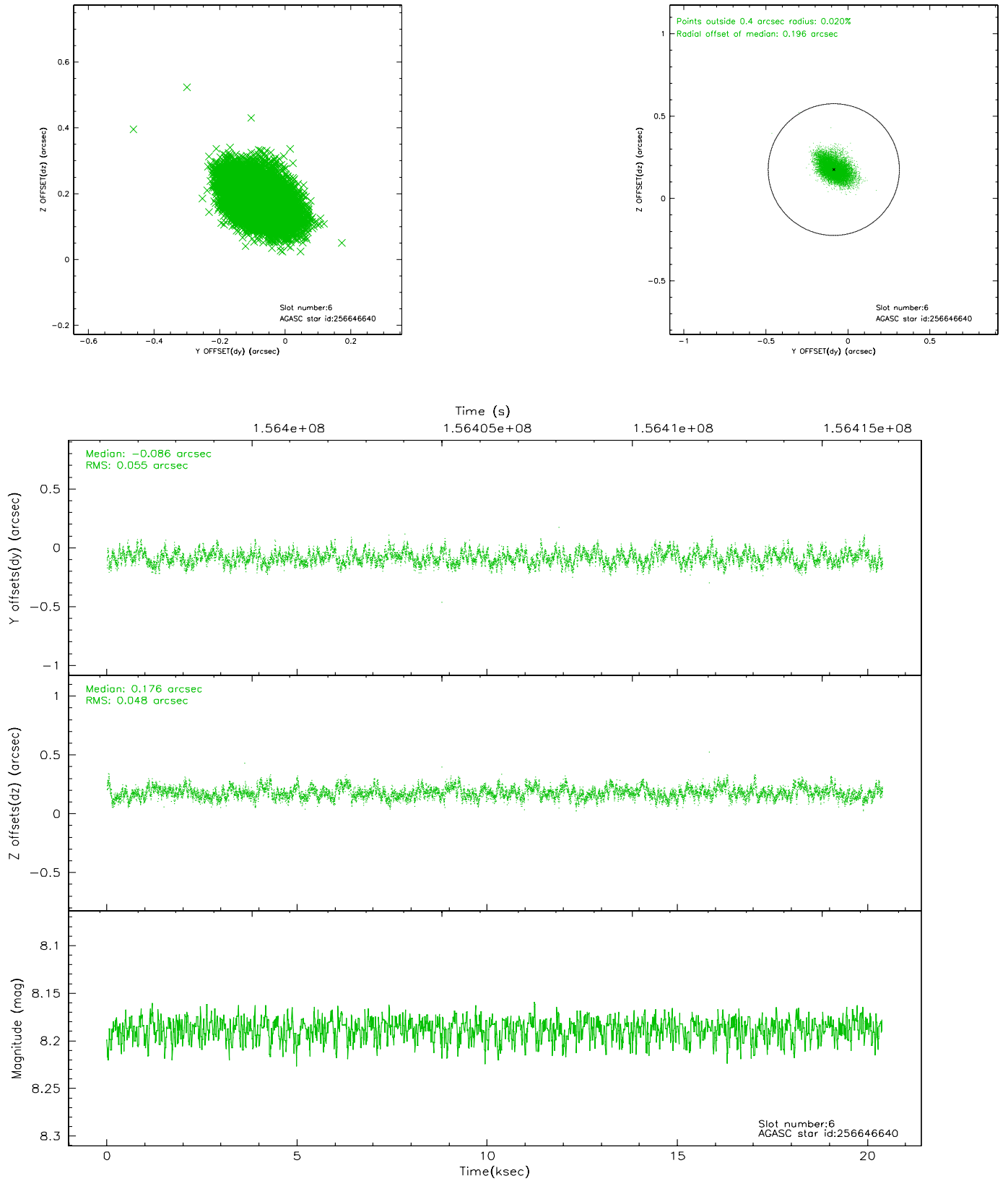
2.4.2 Slot 4



2.4.3 Slot 5

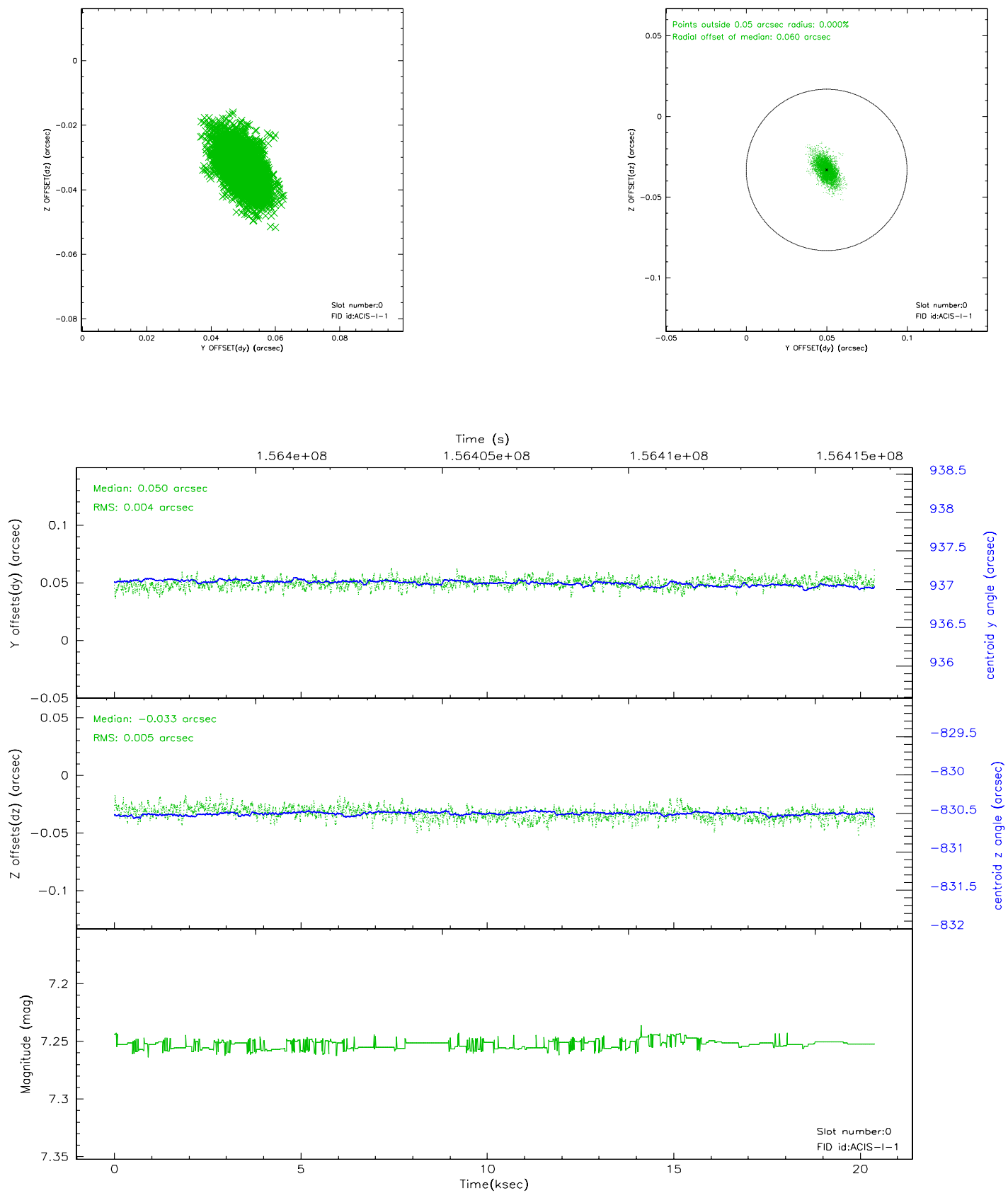


2.4.4 Slot 6

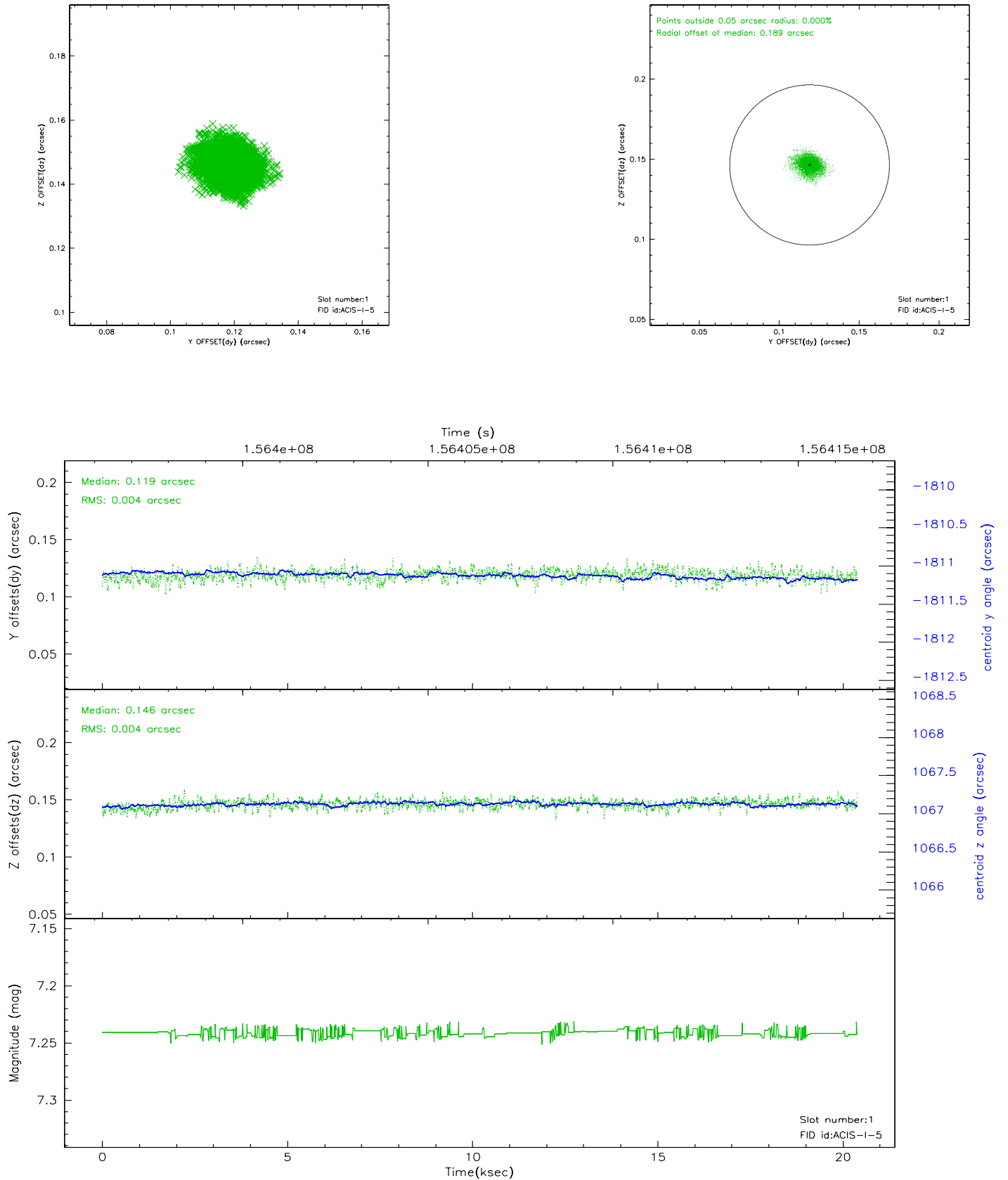


2.5 FID Slots

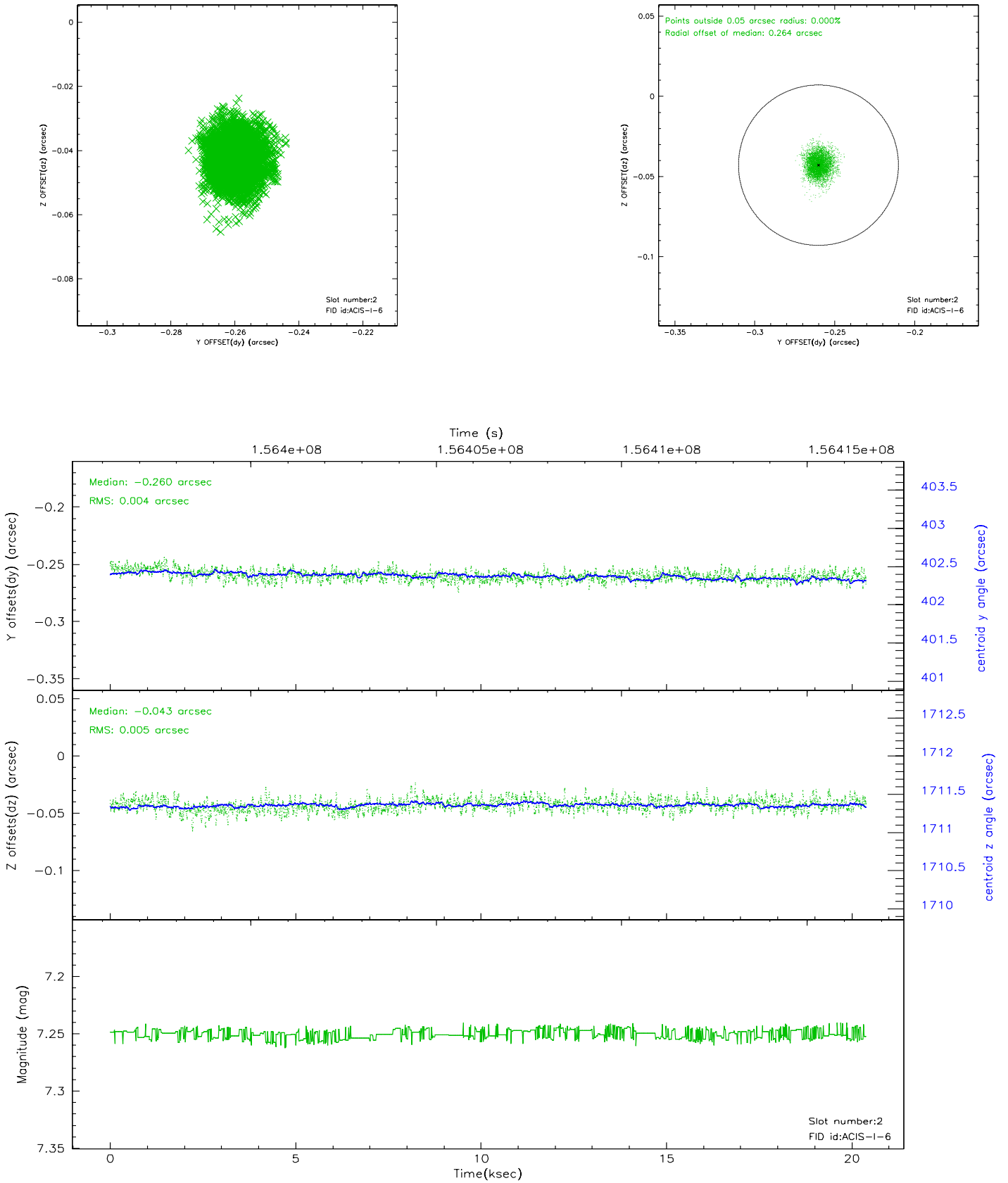
2.5.1 Slot 0



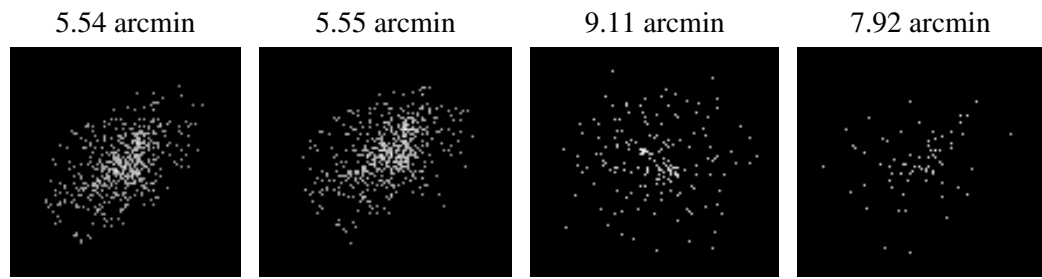
2.5.2 Slot 1



2.5.3 Slot 2



3 Point Sources



A Summary

A.1 Status

V&V Scientist	Beth Sundheim
V&V Date (YYYY-MM-DD)	2010.10.01
V&V Edition	2
V&V Disposition and Status	OK
V&V Charge Time	19.471

A.2 Comments

The guide star in slot 7 was manually excluded from the processing due to poor data quality.