

V&V Reference Report

L2 ASCDS Version : 8.4.5

Observation 4206 - L2 Version 3
Chandra X-Ray Center

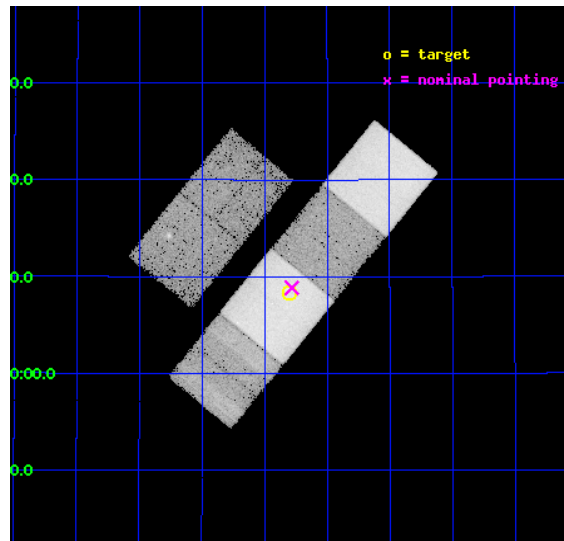
L2 Processing Date : Nov 1 2012

Contents

1	Front	2
2	OBI	3
2.1	OBI	3
2.1.1	Images	3
2.1.2	Bias	3
2.1.3	Parameters	4
2.1.4	Events	4
2.2	Compared Parameters	5
2.3	Aspect	6
2.4	Star Slots	9
2.4.1	Slot 3	9
2.4.2	Slot 4	10
2.4.3	Slot 5	11
2.4.4	Slot 6	12
2.4.5	Slot 7	13
2.5	FID Slots	14
2.5.1	Slot 0	14
2.5.2	Slot 1	15
2.5.3	Slot 2	16
A	Summary	17
A.1	Status	17
A.2	Comments	17

1 Front

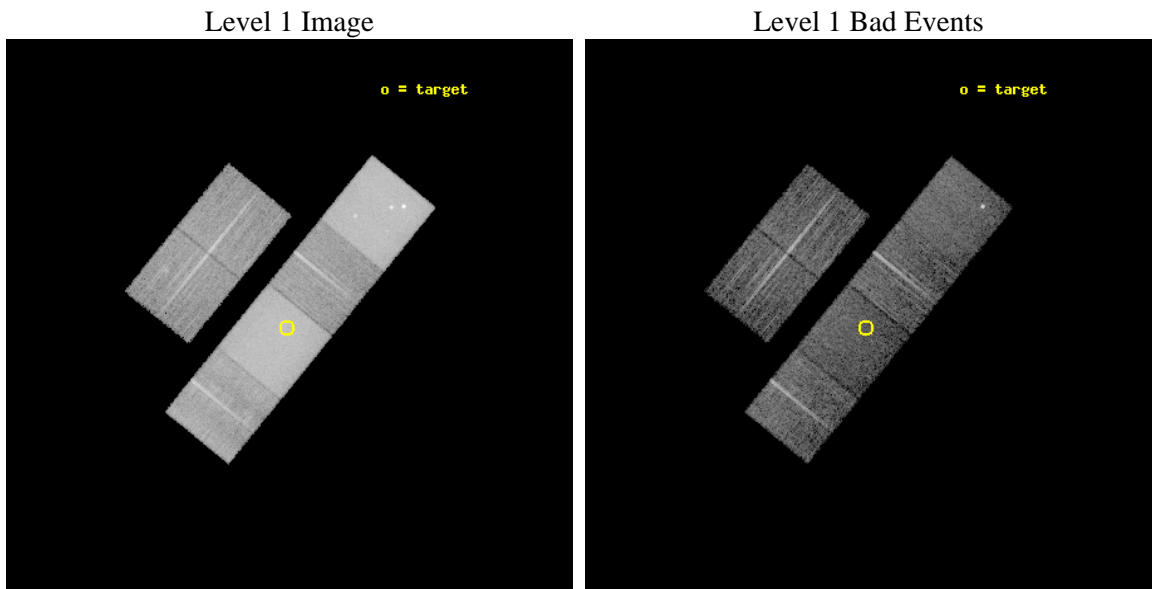
seq_num	800362	Sequence number
obs_id	4206	Observation id
title	THE NATURE OF LOW SURFACE BRIGHTNESS X-RAY CLUSTERS OF GALAXIES	Pr
observer	Dr. DAVID BUOTE	Principal investigator
object	3810	Source name
dtcycle	0	
cycle	P	events from which exps? Prim/Second/Both
ra_targ	357.700833	Observer's specified target RA [deg]
dec_targ	29.139056	Observer's specified target Dec [deg]
ra_nom	357.69542417105	Nominal RA [deg]
dec_nom	29.147502126489	Nominal Dec [deg]
roll_nom	129.17316864929	Nominal Roll [deg]
revision	3	Processing version of data
ontime	11805.411296666	Sum of GTIs [s]
livetime	11655.924070462	Livetime [s]
ontime2	10463.684915453	Sum of GTIs [s]
ontime3	10641.77493754	Sum of GTIs [s]
ontime5	11805.370495737	Sum of GTIs [s]
ontime6	10651.539655179	Sum of GTIs [s]
ontime7	11805.411296666	Sum of GTIs [s]
ontime8	10719.518548012	Sum of GTIs [s]
l2events	327516	Number of level 2 events



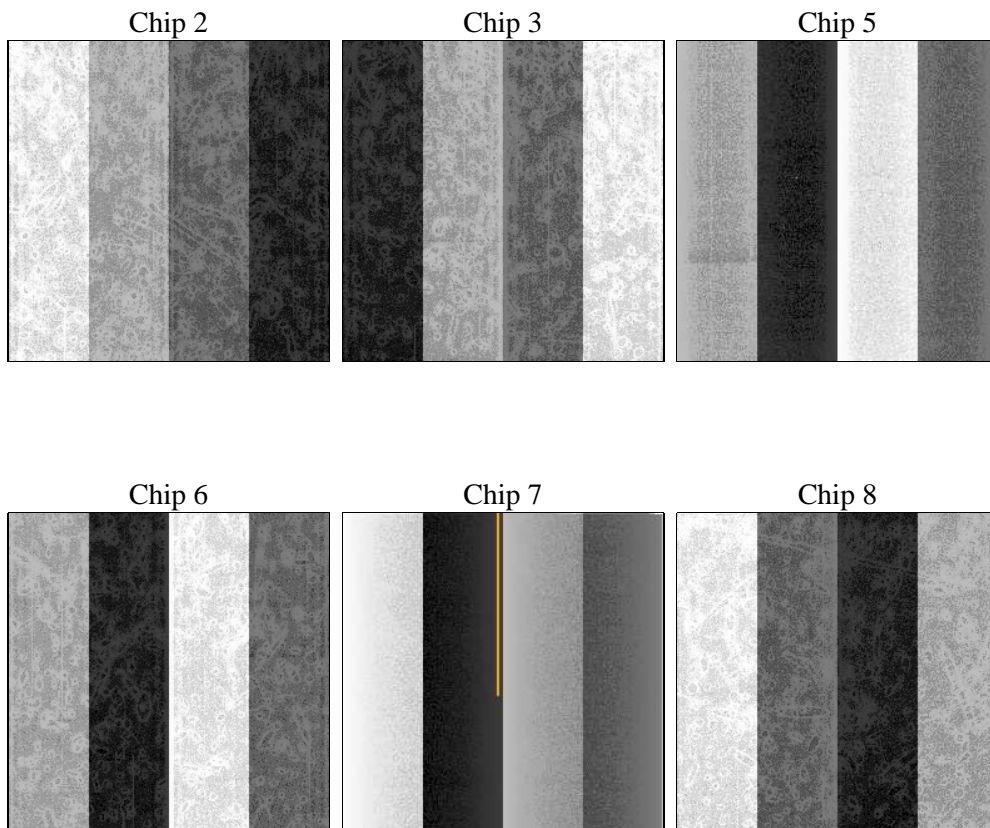
2 OBI

2.1 OBI

2.1.1 Images



2.1.2 Bias



2.1.3 Parameters

obi_num	0	Obi number	sched_exp_time	12223.000000	[s] Scheduled observation exposure time
ascdsver	8.4.5	Processing system revision	ontime	11805.411296666	Sum of GTIs [s]
caldsver	4.5.2	 	ontime2	10463.684915453	Sum of GTIs [s]
date	2012-11-01T10:40:45	Date and time of file creation	ontime3	10641.77493754	Sum of GTIs [s]
revision	3	Processing version of data	ontime5	11805.370495737	Sum of GTIs [s]
			ontime6	10651.539655179	Sum of GTIs [s]
			ontime7	11805.411296666	Sum of GTIs [s]
			ontime8	10719.518548012	Sum of GTIs [s]
			l1events	650298	Number of level 1 events

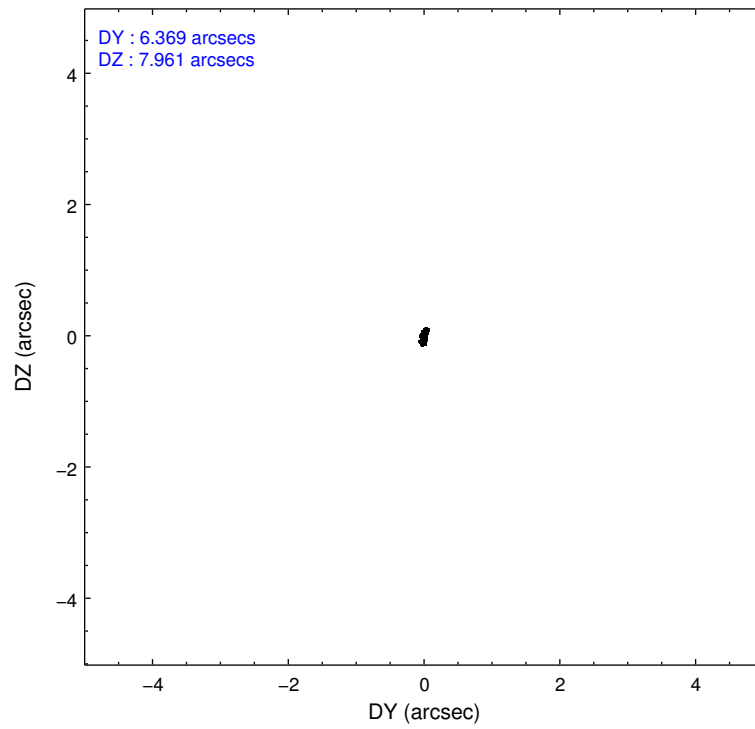
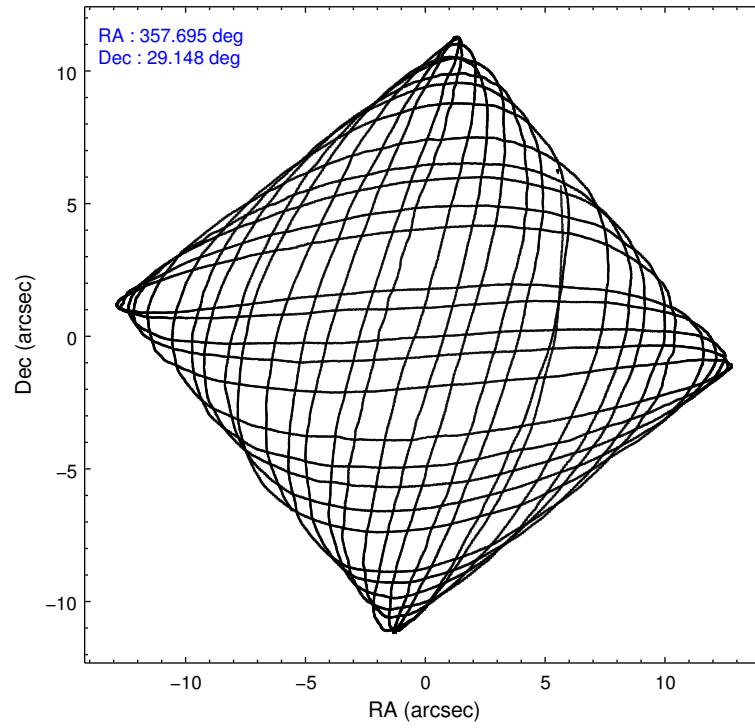
2.1.4 Events

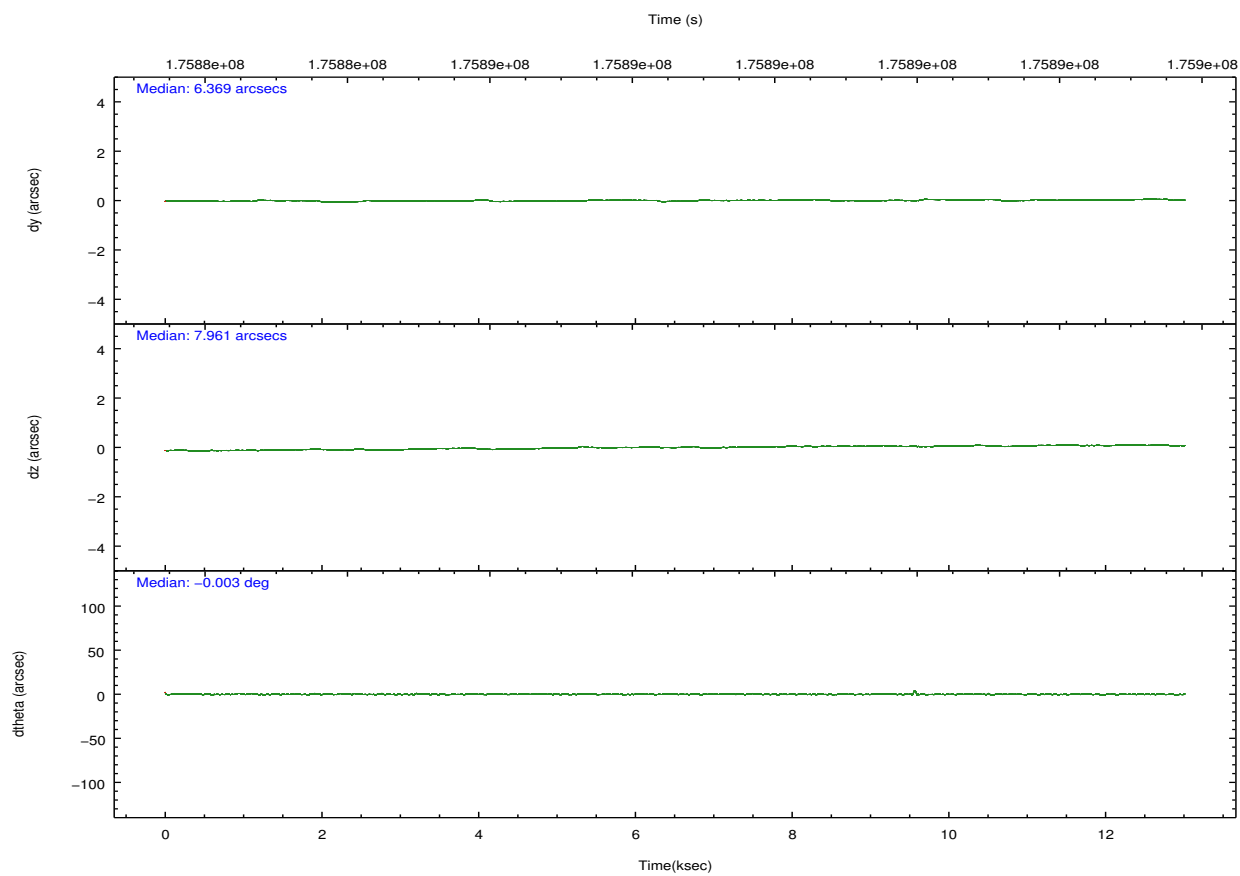
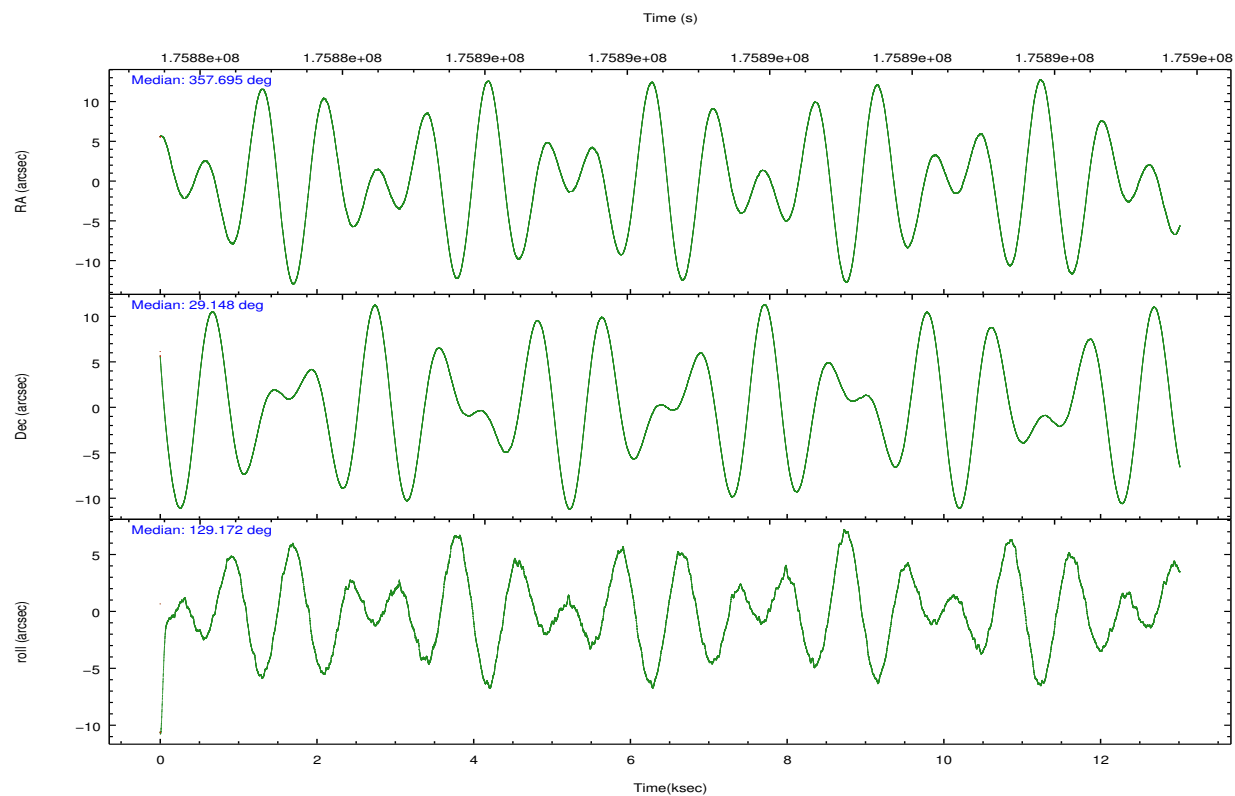
	ccd 2	ccd 3	ccd 5	ccd 6	ccd 7	ccd 8		ccd 2	ccd 3	ccd 5	ccd 6	ccd 7	ccd 8
level 1 events	66360	63126	182910	72080	170923	94899	grade 0 events	8826	9185	20061	14132	13788	24351
rejected events	52274	48467	50933	51271	38715	54113		13%	14%	10%	19%	8%	25%
rejected %	78%	76%	27%	71%	22%	57%	grade 1 events	77	54	1059	63	68	139
								0%	0%	0%	0%	0%	0%
							grade 2 events	2116	2107	37608	2567	23906	5805
								3%	3%	20%	3%	13%	6%
							grade 3 events	890	941	7979	1065	10465	2758
								1%	1%	4%	1%	6%	2%
							grade 4 events	874	921	7890	1079	10269	2616
								1%	1%	4%	1%	6%	2%
							grade 5 events	1835	2064	8175	2132	7802	3008
								2%	3%	4%	2%	4%	3%
							grade 6 events	1388	1515	58478	1981	73820	5286
								2%	2%	31%	2%	43%	5%
							grade 7 events	50354	46339	41660	49061	30805	50936
								75%	73%	22%	68%	18%	53%

2.2 Compared Parameters

Parameter	Planned	Actual	Parameter	Planned	Actual
Instrument	ACIS	ACIS	Obspar format version number	7	7
Detector	ACIS-235678	ACIS-235678	Obspar file type	PREDICTED	ACTUAL
Grating	NONE	NONE	Obspar update status	NONE	UPDATED
Data mode	VFAINT	VFAINT	Number of optional ACIS chips dropped	0	0
Observation mode	POINTING	POINTING	On-chip summing requested	N	N
[deg] Pointing RA	357.724733	357.6954241710527	Subarray requested	NONE	NONE
[deg] Pointing Dec	29.138168	29.14750212648853	Alternating exposures requested	N	N
[deg] Pointing Roll	129.002270	129.1731686492889	[s] Primary exposure time	0.000000	3.2
[mm] SIM focus pos	-0.684267	-0.6828225247311905			
[mm] SIM defocus	0	0.001444936568705701			
[mm] SIM translation stage pos	-190.132523	-190.1400660498719			
[mm] SIM translation stage offset	0	0.00754346686406393			
[s] Observation start time (MET)	175882886.184000	175881623.6074			
Observation start date	2003-07-29T16:20:22	2003-07-29T16:00:23			
[s] Observation end time (MET)	175895109.184000	175895592.82049			
Observation end date	2003-07-29T19:44:05	2003-07-29T19:53:12			
Read mode	TIMED	TIMED			

2.3 Aspect



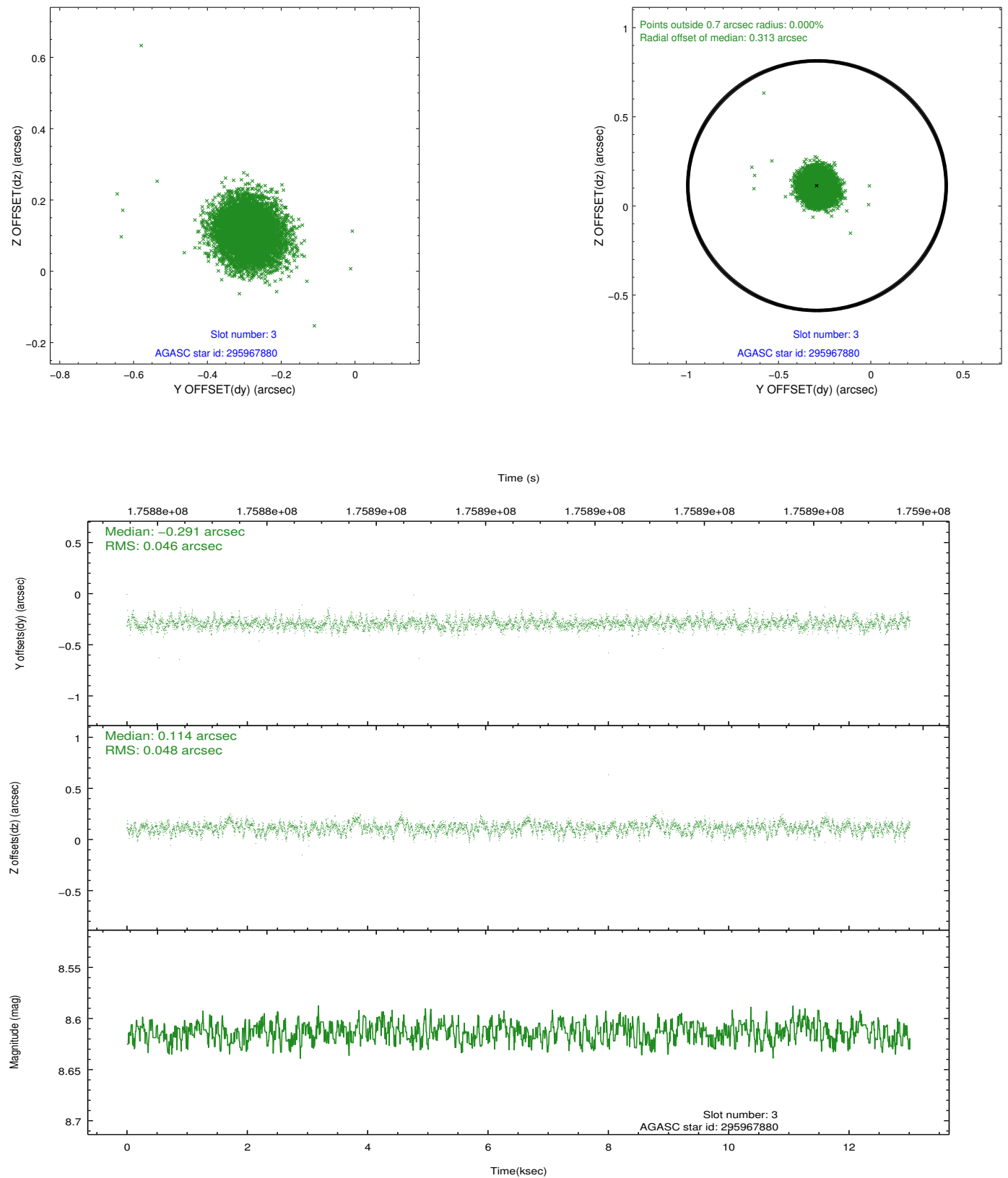


Slot Statistics

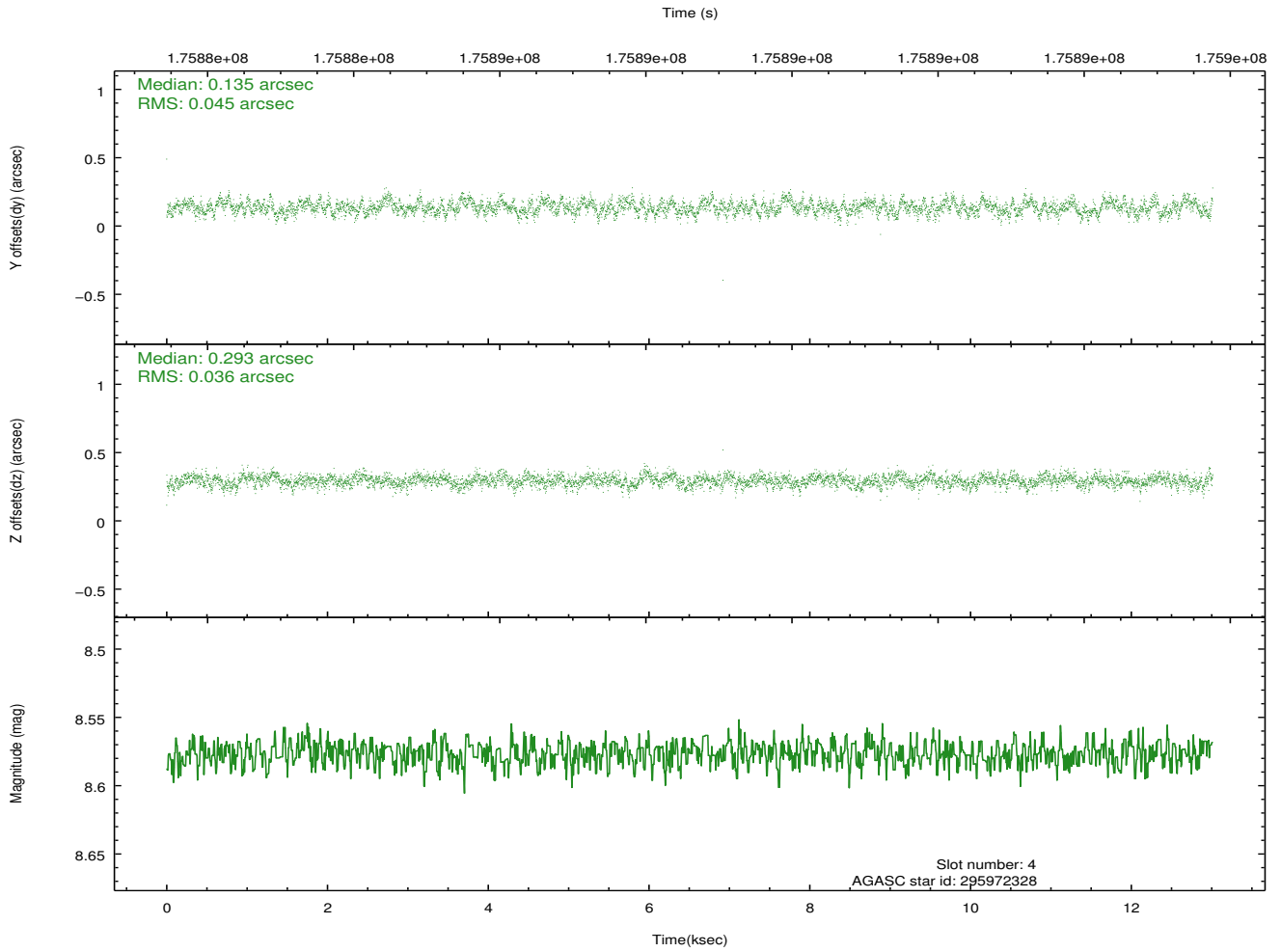
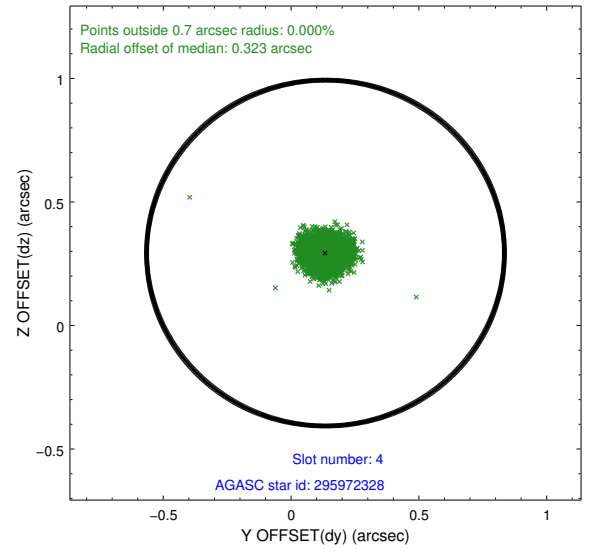
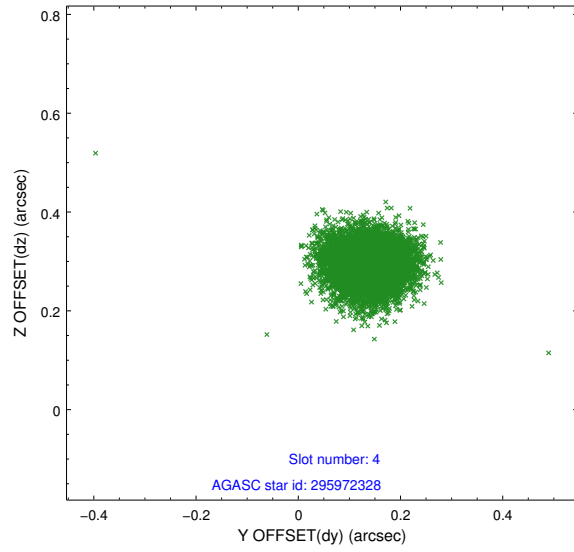
slot	status	id	mag	n_pts	med_dy	med_dz	dr1	dr2	ra	dec	mean_y	mean_z
0	FID	ACIS-S-2	7.10	3172	-0.027	-0.038	0.007	0.011	0.000000	0.000000	-759.15	-1729.17
1	FID	ACIS-S-4	7.21	3173	0.049	0.023	0.005	0.010	0.000000	0.000000	2154.06	178.95
2	FID	ACIS-S-5	7.23	3174	-0.053	0.024	0.007	0.011	0.000000	0.000000	-1811.52	173.10
3	GUIDE	295967880	8.61	6347	-0.291	0.114	0.070	0.113	357.360846	29.719694	2344.09	-434.31
4	GUIDE	295972328	8.58	6347	0.135	0.293	0.061	0.097	358.421579	28.806802	-2304.91	-961.36
5	GUIDE	295983632	7.79	6348	0.518	-0.194	0.052	0.082	358.059012	28.576613	-2234.74	449.78
6	GUIDE	295834432	8.81	6344	-0.098	-0.308	0.089	0.132	357.053996	28.835752	489.47	2325.05
7	GUIDE	295966992	8.73	6344	-0.270	0.094	0.072	0.114	357.323182	29.714840	2405.06	-331.64

2.4 Star Slots

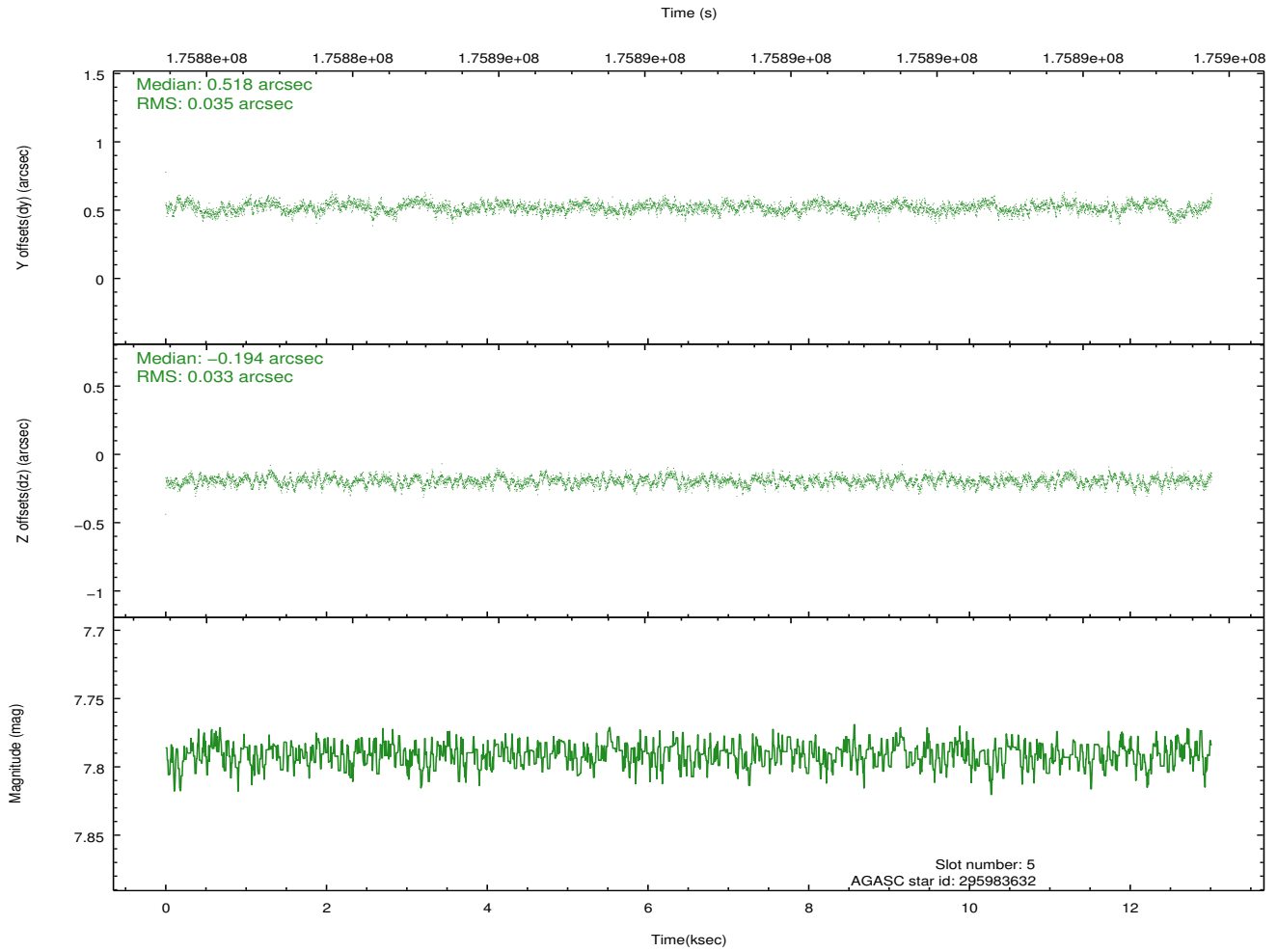
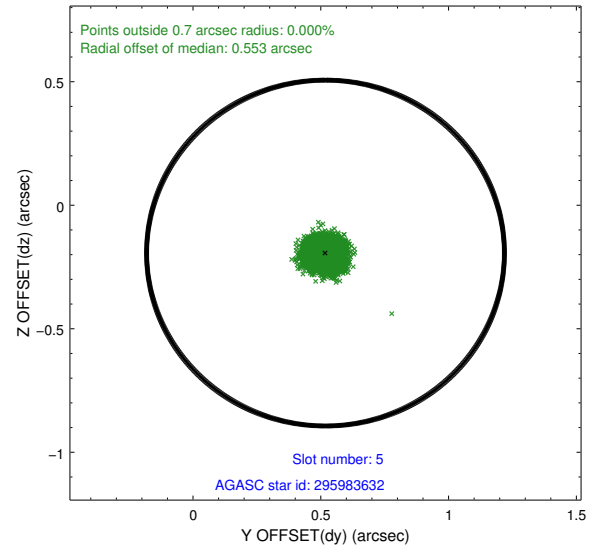
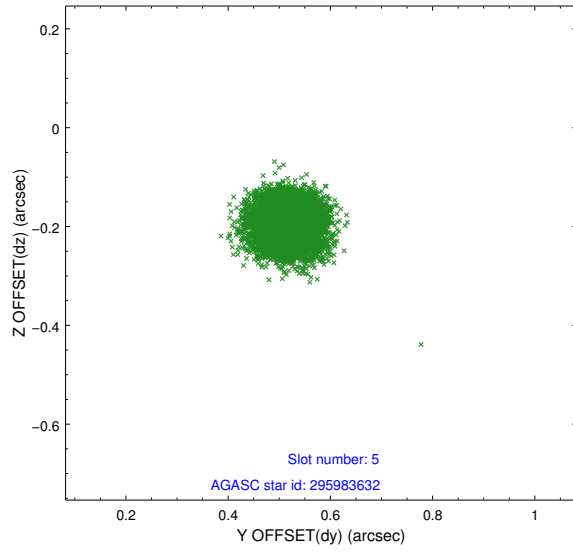
2.4.1 Slot 3



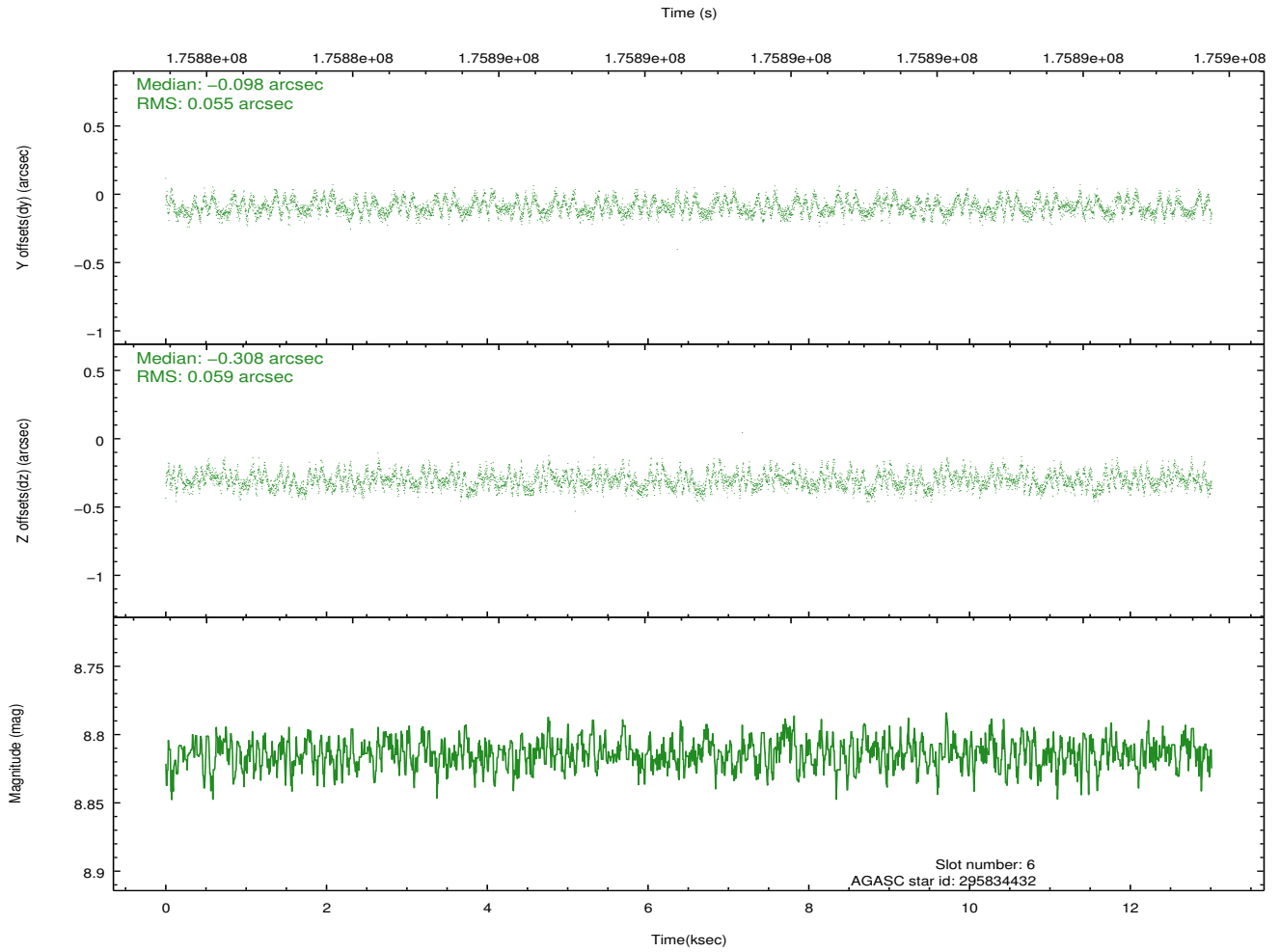
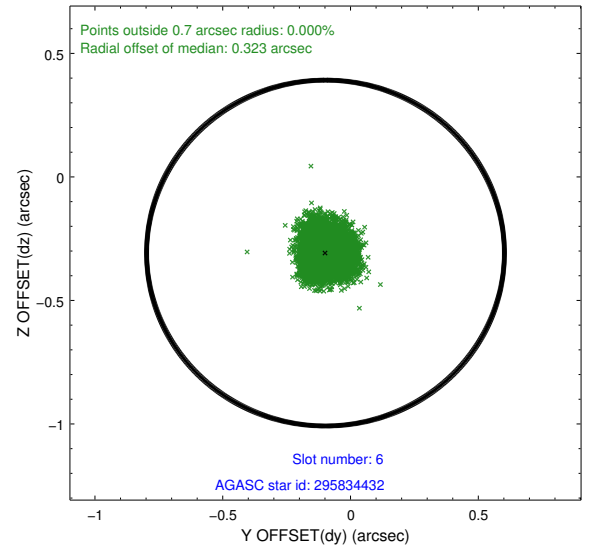
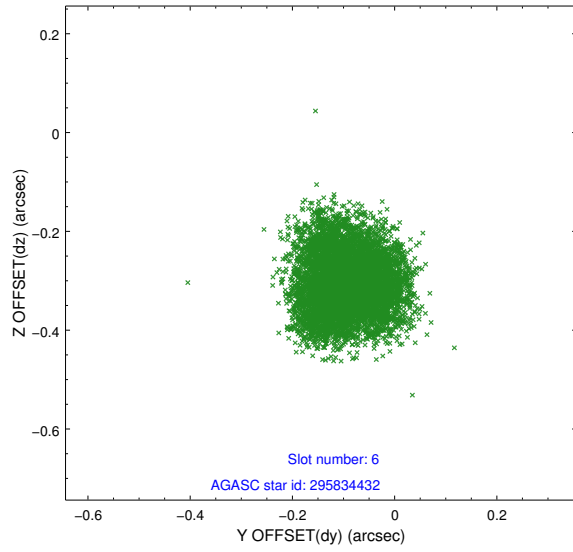
2.4.2 Slot 4



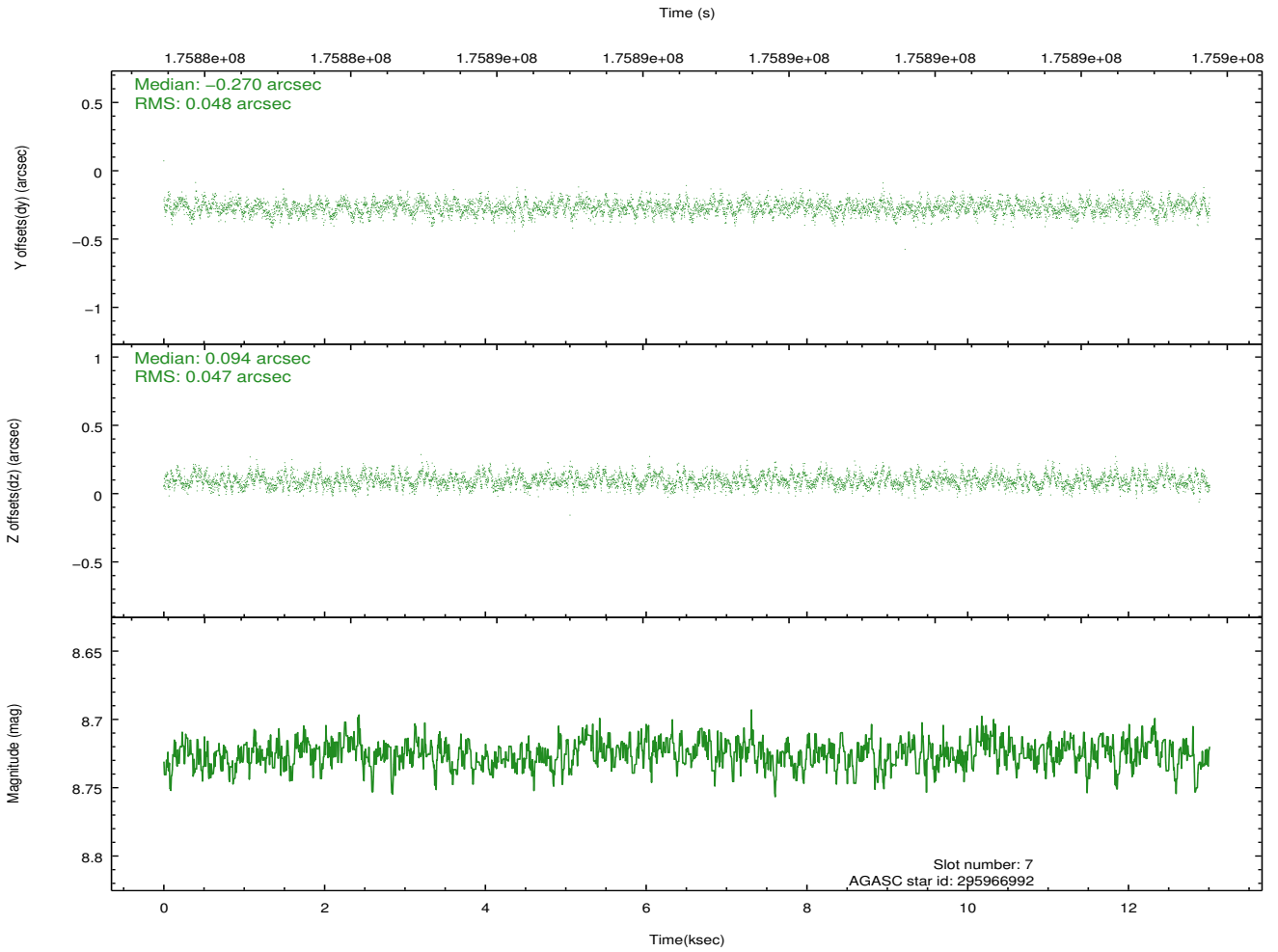
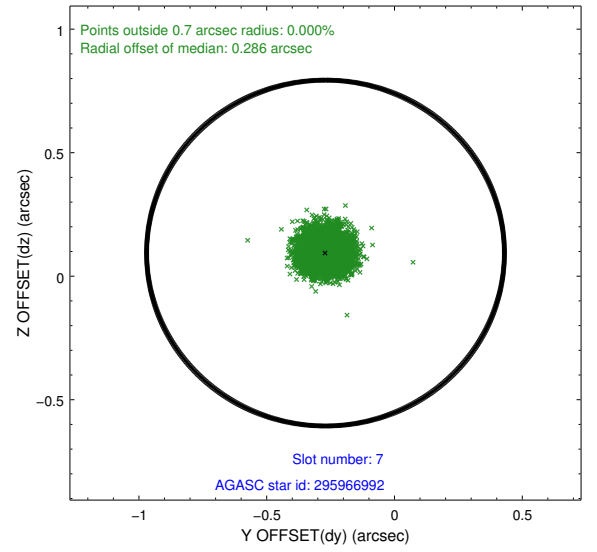
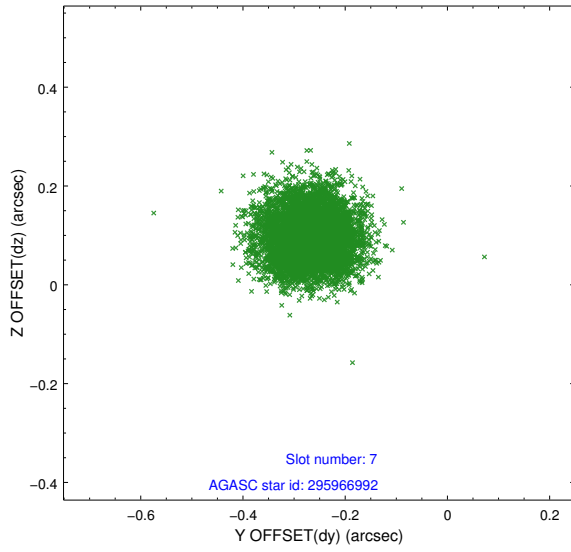
2.4.3 Slot 5



2.4.4 Slot 6

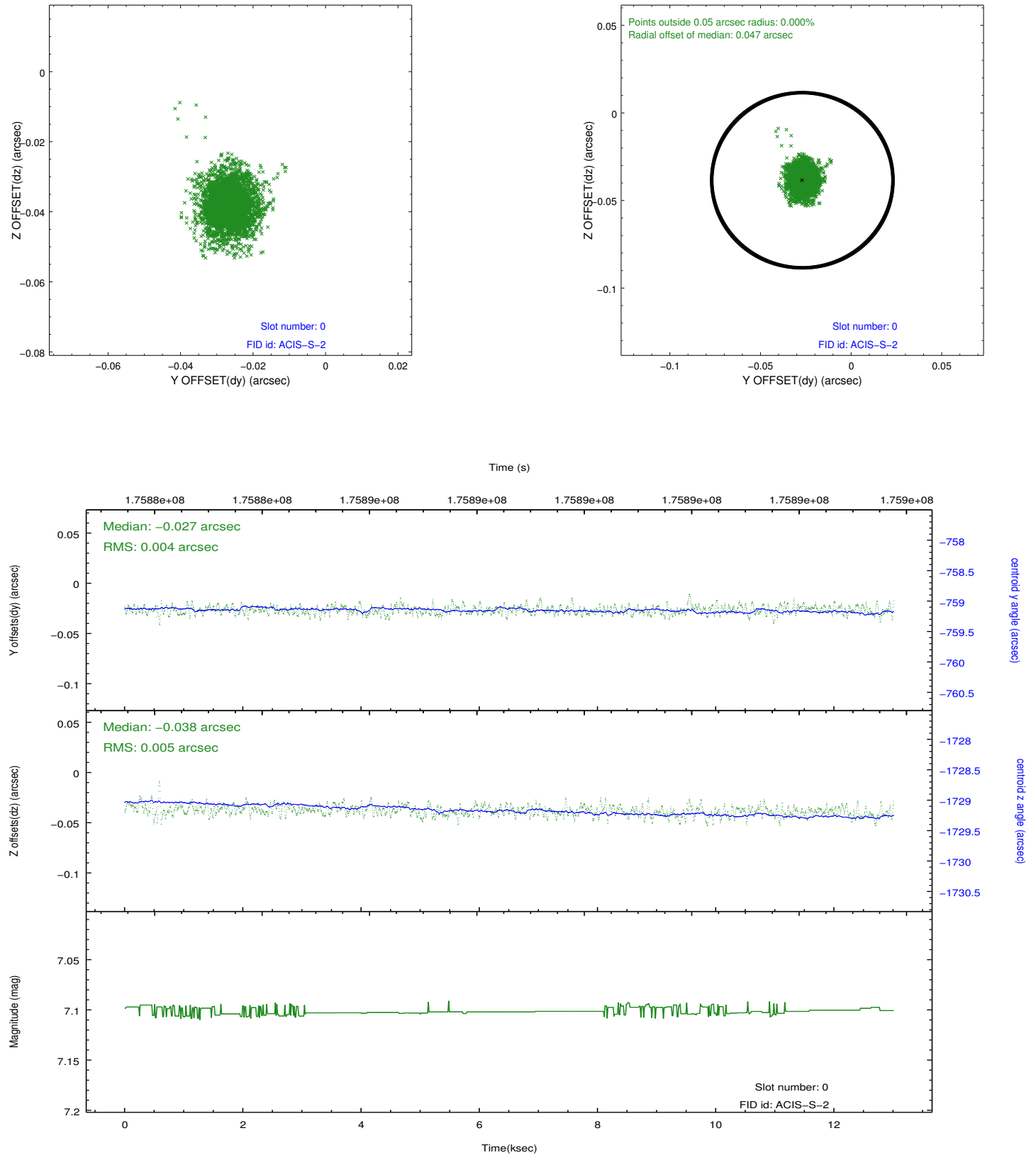


2.4.5 Slot 7

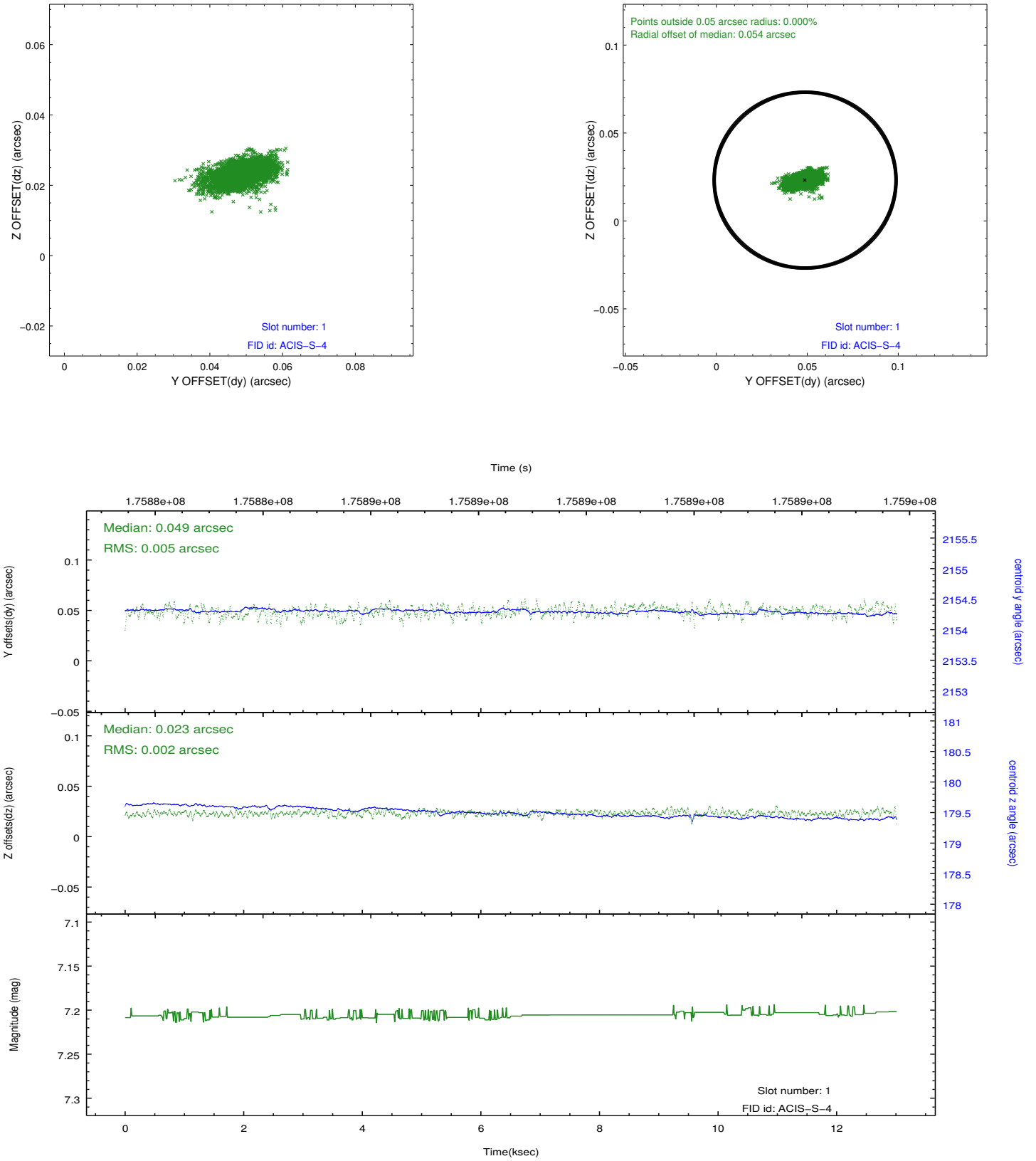


2.5 FID Slots

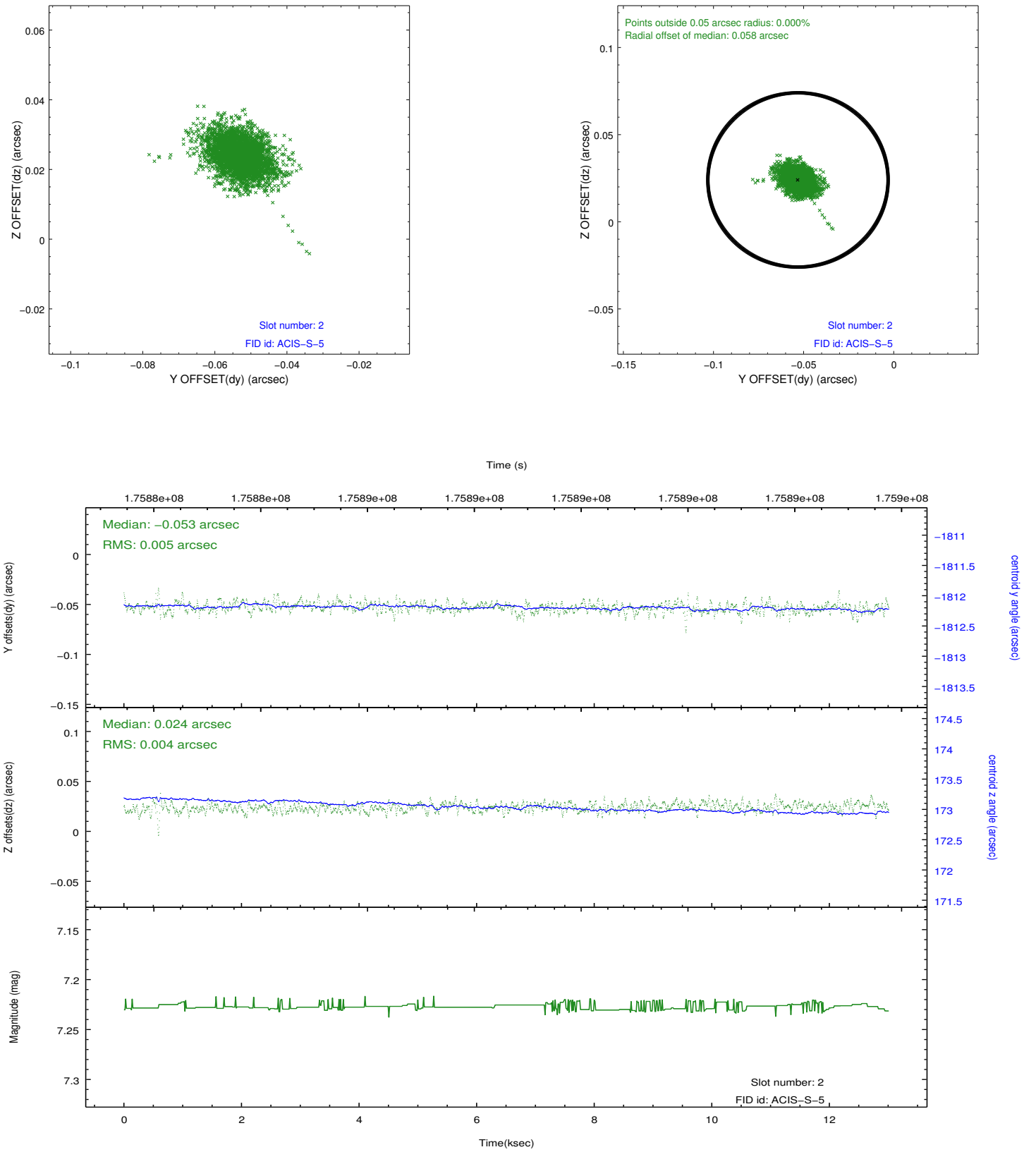
2.5.1 Slot 0



2.5.2 Slot 1



2.5.3 Slot 2



A Summary

A.1 Status

V&V Scientist	Beth Sundheim
V&V Date (YYYY-MM-DD)	2012.11.20
V&V Edition	1
V&V Disposition and Status	OK
V&V Charge Time	11.806

A.2 Comments